

## **Historic, Archive Document**

Do not assume content reflects current scientific knowledge, policies, or practices.



62.09 1909



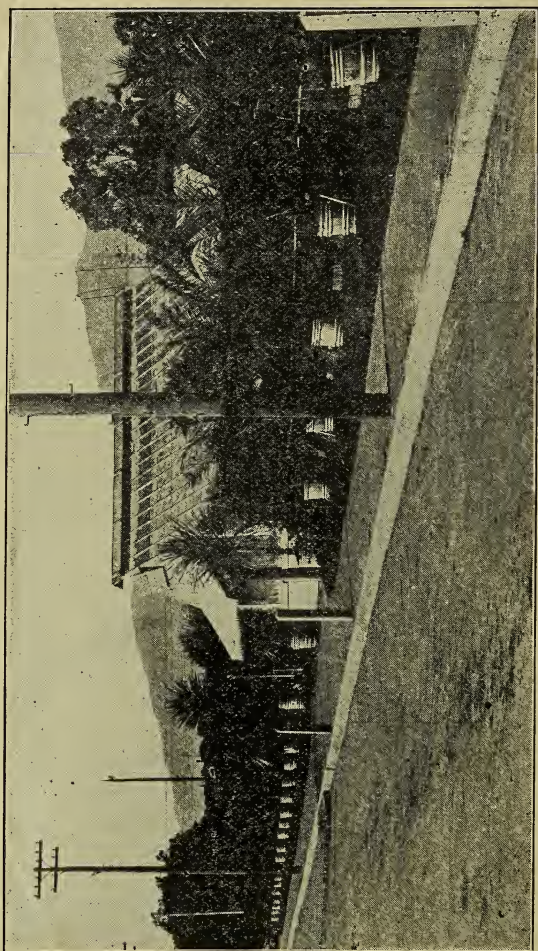
Exotic nurseries  
11)



62.09

EXOTIC NURSERIES  
1420 STATE STR.

SANTA BARBARA  
(ANNO—1909)



"EXOTIC NURSERIES" propagating department and sales yard on State Street—No. 1420



# Points of Interest and Difference

---

You will not only find names in this Catalogue, but also the plants in our nurseries.

**EXOTIC NURSERIES'** plants are grown in large quantities; this gives you the opportunity to select from thousands of plants.

**EXOTIC NURSERIES'** plants are never pot bound and give you the assurance to repay you by a splendid growth if you give them ordinary care.

**EXOTIC NURSERIES'** plants are leading for their good appearance, because they are regularly trimmed to have a good shape. A well trimmed tree will add to the value of your grounds, where a crooked one fails. Is this not especially true when you compare a line of straight sidewalk trees with a line of distorted trees? Our sidewalk trees are straight like a candle.

**THE EXOTIC NURSERIES** don't tolerate cheap, poor looking plants. All our potted plants are in pots or in special made boxes. The "tin can plants", we are glad to say for your benefit and our pride, don't find any room in our nurseries.

**EXOTIC NURSERIES'** plants are packed with special care, responding to all exigencies, our packing boxes are especially made for us and assure safe delivery.

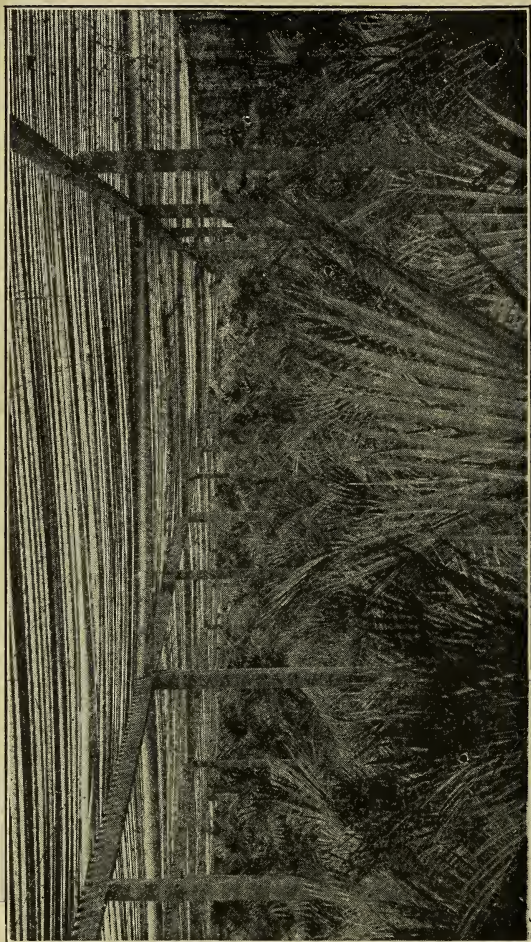
**THE EXOTIC NURSERIES'** are able to furnish especially large plants for those who like immediate results.

**THE EXOTIC NURSERIES** mean to do business in a true business way; we are young and ambitious and we build up on the results obtained by serving you satisfactorily and courteously.

Order always from a responsible business concern because it will confirm its assertion by its acts. This is even more true for a firm handling plants intended to live.

**WE ALWAYS INVITE YOU TO VISIT OUR  
NURSERIES IN ORDER TO INSPECT  
AND COMPARE OUR STOCK OF  
PLANTS FOR YOURSELF.**

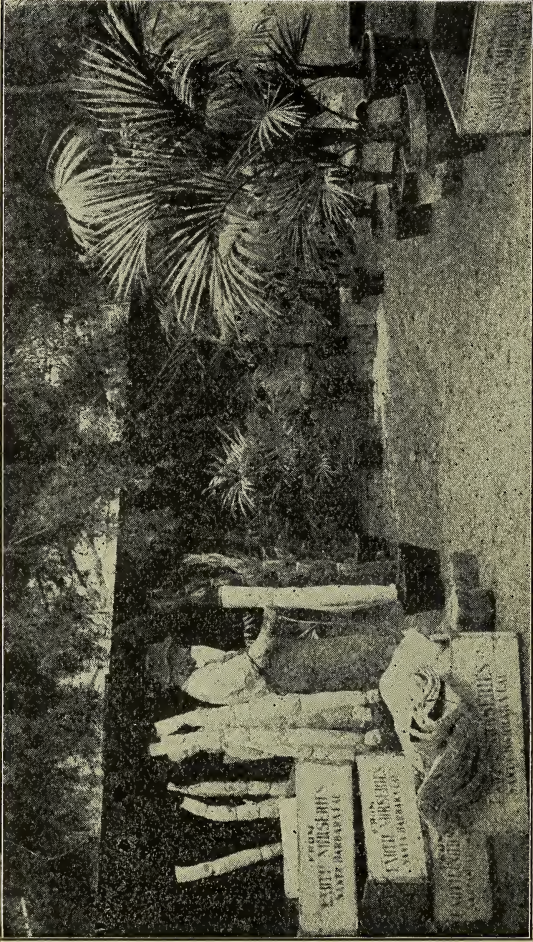




One of "EXOTIC NURSERIES" lath houses of palms



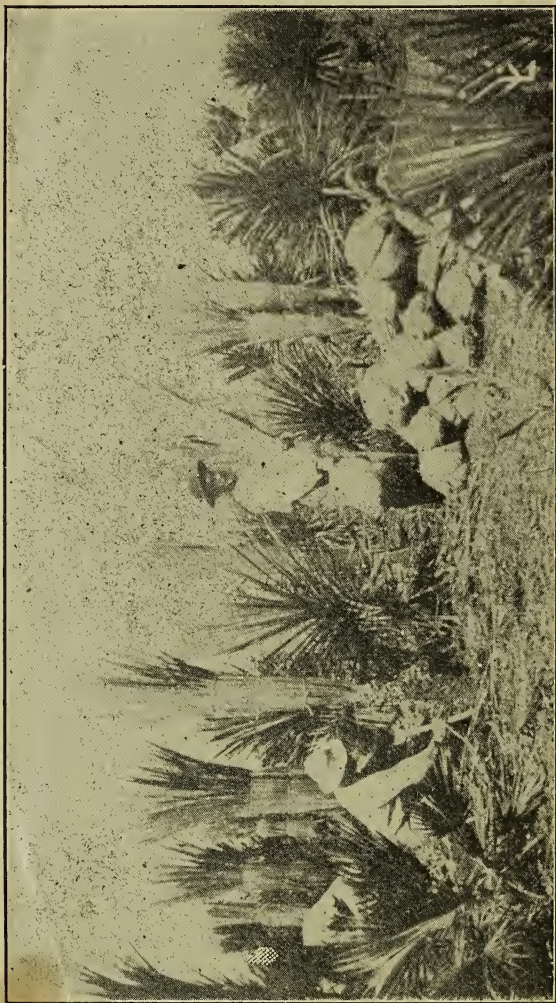




Packing "House Palms" at the "EXOTIC NURSERIES"







Balling of *Dracaenas* at the "EXÓTIC NURSERIES."

## DRACAENAS

	Each	per 10	per 100
	\$	\$	\$
<i>Dracaena amabilis</i> , 2½ in. pot.....	50		
<i>australis</i> , 2½ in. pot.....	20		
balled, 6 to 7 ft.....	2 50	22 50	
balled, 5 to 6 ft.....	2 00	18 00	
balled, 4 to 5 ft.....	1 40	12 50	
balled, 3 to 4 ft.....	75	6 50	
balled, 2 to 3 ft.....	50	4 50	
<i>Bruanti</i> , balled, from 25c to.....	1 00		
<i>calocoma</i> , 2½ in. pot.....	40		
<i>collossea</i> , 2½ in. pot.....	40		
<i>congesta</i> , balled, from 25c to.....	1 00		
<i>Douceti</i> , balled, rare and beautiful.....	1 50		
<i>draco</i> , 4 in. pot.....	75		
<i>cannaefolia</i> , 4 in. pot.....	75		
<i>indivisa</i> , 14 in. tub, 5 to 6 ft.....	2 50		
14 in. tub, 4 to 5 ft.....	2 00		
14 in. tub, 3 to 4 ft.....	1 60		
balled, 5 to 6 ft.....	1 75	15 00	
4 to 5 ft.....	1 25	11 00	100 00
3 to 4 ft.....	1 00	7 50	60 00
2 to 3 ft.....	50	4 50	40 00
balled, 1½ to 2 ft.....	40	3 75	35 00
<i>Guylfolei</i> , 3½ in. pot.....	45		
<i>Massangeana</i> , 4 in. pot.....	75		
6 in. pot.....	1 50	12 50	
<i>Veitchii rubra</i> , 2½ in. pot.....	50		

## BAMBOOS AND GRASSES

	Each	per 10	per 100
<i>Arundinaria falcata</i> , large clump.....	5 00		
medium clump.....	2 50		
smaller clump.....	1 50	12 50	
<i>Hookeriana</i> , very large clump.....	7 50		
large clump.....	5 00		
medium clump.....	2 50	22 00	
smaller clump.....	1 50	13 00	
a plant.....	50	4 00	30 00
<i>Arundo donax</i> , large clump.....	1 00	7 50	50 00
a clump.....	50	4 00	30 00
a plant.....	30	2 50	15 00
<i>donax variegata</i> , large clump.....	1 25	10 00	75 00
a clump.....	60	5 00	40 00
a plant.....	40	3 50	25 00
<i>Bambusa argentea</i> , large clump.....	5 00	45 00	400 00
<i>Bambusa gracilis</i> , according size.....	2 50, 5 00 and up.....		
<i>nana variegata</i> , large clump.....	4 00		
medium.....	2 50		
smaller.....	1 00		
<i>spinosa</i> , large plant.....	10 00		
medium.....	6 00		
smaller.....	4 00		
FOR HEDGES, large clump.....	2 00		
a clump.....	1 00	8 00	70 00
a plant.....	25	2 25	20 00
<i>vulgaris</i> , large clump.....	10 00		
medium.....	5 00		
smaller.....	2 50		
<i>Carex japonica elegans</i> , 6 in. pot.....	75		





What is more majestic than a giant bamboo?  
(*Dendrocalamus Californicus*)

## BAMBOOS AND GRASSES—Continued

	Each	per 10	per 100
<i>Cyperus alternifolius</i> , very large clump.....	2 00		
large clump.....	75	6 00	50 00
smaller clump.....	30	2 50	20 00
<i>canariensis</i> , 4 in. pot.....	35	3 00	25 00
<i>Dendrocalamus latifolius</i> , large clump.....	25 00	250 00	
medium.....	10 00	80 00	
smaller.....	4 00	35 00	
<i>Gynerium argenteum</i> , a plant.....	50		

## CONIFERS

	Each	per 10	per 100
<i>Abies Douglasi</i> , balled, 1 to 1½ ft.....	50		
(Douglas Spruce)			
<i>Araucaria Bidwilli</i> ,			
or Monkey Tree, 22 in. tub, 5 to 6 ft.....	10 00	90 00	
22 in. tub, 4 to 5 ft.....	8 00	72 00	
14 in. box or tub, 4 to 5 ft.....	7 50		
14 in. box or tub, 3 to 4 ft.....	5 00		
balled, 5 to 6.....	8 00		
balled, 4 to 5 ft.....	6 00		
balled, 3 to 4 ft.....	4 00		
balled, 2 to 3 ft.....	2 50		
4 in. pot, 1 to 1½ ft.....	1 00		
<i>excelsa</i> , potted, 3 to 4 ft.....	2 75		
potted, 2 to 3 ft.....	1 75		
potted, 1½ to 2 ft.....	1 25		
potted, 8 to 12 in.....	60		
boxed, 4 to 5 ft.....	4 00		
larger on application.			
<i>glauca</i> , 3 in. pot.....	75		
Napoleon Baumann, very rare, 6 in. pot.....	10 00		
Napoleon Baumann, 8 in. pot.....	15 00		
Arbor Vitae, see <i>Thuja</i> .			
California Big Tree, ( <i>Sequoia gigantea</i> ), 2½ in. pot.....	25		
<i>Cedrus Deodora</i> , 3½ in. pot, stout plants.....	50	4 50	
balled, 6 to 7 ft.....	5 00	45 00	
balled, 5 to 6 ft.....	4 00	36 00	
balled, 4 to 5 ft.....	2 75	25 00	
balled, 3 to 4 ft.....	2 25	21 00	
balled, 2 to 3 ft.....	1 50	14 00	
<i>atlantica</i> , balled, 5 to 6 ft.....	3 50		
<i>Cryptomeria japonica</i> , potted, 1½ to 2 ft.....	50	4 50	
potted, 2 ft. and over.....	75		
balled, 3 to 4 ft.....	1 25	10 00	
2 to 3 ft.....	1 00	8 00	
<i>Cypress (Cupressus) Blue</i> , balled, 5 to 7 ft.....	2 50		
<i>Goveniana</i> , potted, 2 to 3 ft.....	50	4 50	40 00
<i>Guadelupe</i> , 14 in. box.....	2 25		
<i>Italian</i> , 14 in. box, 5 to 6 ft.....	1 50		
3½ in. pot, 1½ to 2 ft.....	15	1 40	
balled, 7 to 8 ft.....	1 50	14 00	
balled, 6 to 7 ft.....	1 25	11 50	100 00
balled, 5 to 6 ft.....	1 10	10 00	90 00
balled, 4 to 5 ft.....	1 00	9 00	80 00
<i>Lawsoniana</i> , balled, 7 to 8 ft.....	3 00		
balled, 6 to 7 ft.....	2 50		
balled, 5 to 6 ft.....	2 00		
balled, 4 to 5 ft.....	1 50		
balled, 3 to 4 ft.....	90		
<i>Monterey</i> , 3½ in. pot.....	15	1 25	
4 in. pot.....	20	1 75	
in flats, 100 per flat.....			2 25

## CONIFERS—Continued

	Each	per 10	per 100
Dammara species, 2½ in. pot.....	30		
Ginkgo biloba, see Maiden Hair Tree.			
Juniper (Juniperus) communis, balled, 3 to 4 ft.....	1 00	9 00	
balled, 2 to 3 ft.....	75	6 50	60 00
virginiana, balled, 5 to 6 ft.....	1 30	12 00	
balled, 4 to 5 ft.....	1 15	10 00	
balled, 3 to 4 ft.....	1 00	9 00	
balled, 2 to 3 ft.....	75	7 00	
Libocedrus decurrens, 2½ in. pot.....	25		
Maiden Hair Tree,			
or Ginkgo biloba, balled, 7 to 8 ft.....	1 75		
balled, 6 to 7 ft.....	1 40		
balled, 5 to 6 ft.....	1 00		
balled, 4 to 5 ft.....	80		
Pine, austrian, balled, young plant.....	45		
canariensis, 3½ in. pot.....	25	2 20	
balled, 6 to 7 ft.....	2 00		
balled, 5 to 6 ft.....	1 60		
balled, 4 to 5 ft.....	1 25		
balled, 3 to 4 ft.....	1 00	9 00	
balled, 2 to 3 ft.....	75	6 50	
balled, 1½ to 2 ft.....	50		
Coulteri, 6 in. pot.....	50		
Monterey,			
(or insignis) potted, 4 to 6 ft.....	75	6 00	
potted, 3 to 4 ft.....	50	4 00	35 00
potted, 2 to 3 ft.....	30	2 50	20 00
potted, 1½ to 2 ft.....	25	2 00	15 00
balled, 8 to 10 ft.....	1 75		
balled, 6 to 8 ft.....	1 20	11 00	
balled, 4 to 6 ft.....	75	6 50	
balled, 3 to 4 ft.....	60	5 00	
balled, 2 to 3 ft.....	40	3 50	
pinea, balled, 2 to 3 ft.....	75		
ponderosa, 3½ in. pot.....	25		
sylvestris, balled, 1 to 2 ft.....	50		
Sequoia gigantea, see California Big Tree.			
Redwood (Sequoia sempervirens), 4 in. pot.....	40	3 50	
5 in. pot.....	75	6 00	
balled, 6 to 8 ft.....	2 50		
balled, 5 to 6 ft.....	2 00		
balled, 4 to 5 ft.....	1 50		
Spruce, see Abies.			
Thuya Chinese, 14 in. boxes.....	1 75		
balled, 4 to 5 ft.....	1 75	16 00	
balled, 3 to 4 ft.....	1 40	13 00	
balled, 2 to 3 ft.....	1 00	9 00	80 00
balled, 1½ to 2 ft.....	60	5 00	45 00
dwarf (compacta nana), balled, 2 to 3 ft.....	1 75	15 00	
balled, 1½ to 2 ft.....	1 25	11 00	100 00
Hoveyana, balled, 2 to 3 ft.....	1 50		
occidentalis, (American), 2 to 3 ft.....	1 00	8 00	

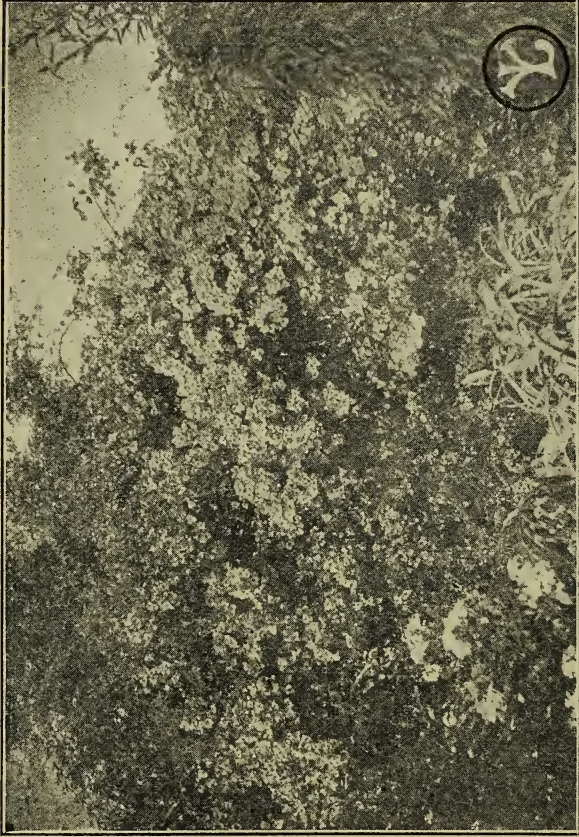
## CLIMBING AND TRAILING PLANTS

	Each	per 10	per 100
Antigonon leptopus, 2½ in. pot.....	25		
(Rosa de Montana)			
Ampelopsis quinquefolia, see Virginia Creeper.			
Veitchii, see Boston Ivy.			
Aristolochia siphocampylus, 2½ in. pot.....	25		
(Dutchman's Pipe)			

## CLIMBING HND TRAILING PLANTS—Continued

	Each	per 10	per 100
<i>Asparagus plumosus</i> , 8 in. pot.....	75		
6 in. pot.....	50		
large clump.....	50		
a clump.....	35		
<i>Sprengeri</i> , 3½ in. pot.....	20		
7 in. pot.....	60		
large clump.....	75		
medium clump.....	50		
smaller clump.....	35		
16 in. hanging basket.....	2 00		
12 in. hanging basket.....	1 50		
8 in. hanging basket.....	1 25		
<i>Bignonia grandiflora</i> , 7 in. pot.....	60		
(Trumpet Vine)			
6 in. pot.....	40		
4 in. pot.....	25		
magnifica, 2½ in. pot, uncommon.....	30		
Manglesii, 2½ in. pot, rare.....	35		
Tweediana, 4 in. pot, over 2 ft. high.....	35	3 25	30 00
2½ in. pot, 2 ft. high.....	25	2 25	20 00
venusta, 4 in. pot.....	35	3 25	30 00
3½ in. pot.....	25	2 25	
2½ in. pot.....	20		
violacea, 6 in. pot.....	60		
3½ in. pot.....	25		
<i>Bougainvillea Sanderiana</i> , 14 in. boxes, \$1 50 to.....	2 50		
5 in. pot.....	50		
3½ in. pot.....	35		
2½ in. pot.....	25	2 25	
(true) lateritia, 16 in. box, very large plant.....	12 50		
(brick colored)			
14 in. tub, large plant.....	9 00		
8 in. box, over 5 ft. high.....	7 50	67 50	
5 in. pot, over 20 inches high.....	4 00		
<i>Boston Ivy</i> , 6 in. pot.....	45		
( <i>Ampelopsis Veitchii</i> )			
5 in. pot.....	35		
2½ in. pot.....	10	80	7 00
bare rooted, 2 years old.....	25	2 25	20 00
<i>Campsidium Vladivianum</i> , 5 in. pot.....	50	4 50	
4 in. pot.....	35	3 00	
2½ in. pot.....	25	2 25	
<i>Cardiospermum hirsutum</i> , 4 in. pot, rare.....	40	3 50	
<i>Clematis paniculata</i> , 4 in. pot.....	35	3 20	
3½ in. pot.....	25	2 25	
<i>Cobaea scandens</i> , 4 in. pot.....	35		
<i>Convolvulus mauritanicus</i> , 2½ in. pot.....	10		
<i>Dolichos lignosus</i> , 3½ in. pot.....	25	2 25	
Dutchman's pipe, see <i>Aristolochia sipho</i> .			
<i>Ficus repens</i> , 4 in. pot.....	30		
3½ in. pot.....	20	1 50	
2½ in. pot.....	15	1 10	10 00
<i>Fuchsia procumbens</i> , 7 in. pot.....	75		
hanging basket.....	1 00		
<i>Hardenbergia monophylla</i> , 2½ in. pot.....	20	1 75	
<i>Hedera helix</i> , see Ivy.			
Honeysuckle ( <i>Lonicera</i> ) Japanese, 5 in pot.....	35	3 20	
4 in. pot.....	25	2 25	
aurea reticulata.....	25	2 25	
Halleana, 5 in. pot.....	35	3 20	
4 in. pot.....	25	2 25	





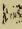
Bougainvilleas at the "EXOTIC NURSERIES."



## CLIMBING AND TRAILING PLANTS—Continued

	Each	per 10	per 1
Hoya carnosae, 2½ in. pot.....	25	2 25	
Ipomaea Learii, 4 in. pot.....	25		
(Morning Glory Heavenly Blue)			
Jasmine (Jasminum) grandiflorum, 3½ in. pot, 1 to 1½ ft....	25	2 25	
revolutum, 3½ in. pot.....	25	2 25	
simplicifolium, 2½ in. pot.....	25	2 25	
Lantana, weeping, 2½ in. pot.....	15		
Lonicera, see Honeysuckle.			
Lophospermum scandens, 6 in. pot.....	50		
Lotus pefiorynchus, potted.....	10		
5 in. pot.....	40		
Mandevillea suaveolens, 3½ in. pot.....	25	2 00	
Medeola asparagoides, see Smilax.			
Morning glory Learii, heavenly blue, 3 and 4 in. pot.....	25		
giant japanese, 3 and 4 in. pot.....	25	2 00	
mexicana, 4 in. pot.....	25	2 25	
Muhlenbeckia complexa, 5 in. pot.....	35	3 00	
(Wire Vine)			
3½ in. pot.....	25	2 00	
Passion vine (Passiflora), Constance Elliott, white, 3½ in. pot	25		
edulis, white and blue, potted.....	50		
manicata, scarlet, 8 in. boxes.....	75		
6 in. pot.....	45	4 00	
5 in. pot.....	35	3 00	
3½ in. pot.....	25		
coerulea, 3½ in. pot.....	25		
Phaseolus caraalla, (Snail Vine) 4 in. pot.....	35		
2½ in. pot.....	25		
Plumbago capensis, 5 in. pot.....	40		
balled, 75c to.....	1 00		
capensis alba, 4 in. pot.....	35		
Rhyngospermum jasminoides, 6 in. pot.....	75		
Russelia elegantissima, 2½ in. pot.....	10	80	
Solanum (Potato vines) jasminoides, (white), 6 in. pot.....	40	3 50	30 00
4 in. pot.....	25	2 25	
2½ in. pot.....	10		
Seaforthianum, heavenly blue, 4 in. pot.....	35	3 00	
3½ in. pot.....	25	2 25	
2½ in. pot.....	20		
Wendlandi, large blue, 14 in. box, 8 feet.....	2 50		
6 in. pot.....	75		
5 in. pot.....	50		
4 in. pot.....	25		
smaller.....	10		
Smilax, (Medeola), 2½ in. pot, used for garlands.....	15	1 00	
Smilax (ASPERA), 5 in. pot.....	50		
Sollya heterophylla, 5 in. pot.....	45		
3 in. pot.....	25		
balled, large.....	1 25		
Swainsonia galegifolia.....	25		
Stephanotis floribunda, from 50cts. to.....	1 50		
Tacsonia mollissima, 4 in. pot.....	35		
(Pink Passion vine), 3½ in. pot.....	25		
Tecoma capensis, 5 in. pot.....	40	3 50	
Cherere, uncommon.....	35		
jasminoides, 5 in. pot.....	35		
4 in. pot.....	25	2 25	
jasminoides alba, balled.....	75		
McKenna, 6 in. pot.....	60		
5 in. pot.....	40		
4 in. pot.....	25		
Trumpet vine, see Bignonia grandiflora.			

## CLIMBING AND TRAILING PLANTS—Continued

	Each	per 10	per 100
Virginia creeper ( <i>Ampelopsis quinquefolia</i> ) 6 in. pot.....	50		
5 in. pot.....	40		
Vitis capensis, 6 in. pot.....	1 50		
 cordifolia, bare roots.....	25	2 25	20 00
Wire vine, see <i>Muhlenbeckia complexa</i> .			
Wisteria chinensis, purple, 4 in. pot.....	35		
white, 4 in. pot.....	45		

## PLANTS FOR HEDGES

	Each	per 10	per 100
For larger sizes as those submentioned, see other departments.			
Arbor Vitae ( <i>Thuja</i> ) see coniferous trees.			
Bougainvillea Sanderiana, 2½ in. pot.....	25	2 25	
California Privat, 100 plants per flat.....			4 00
Crataegus pyracantha, ( <i>Burning Bush</i> ), 2½ in. pot.....	10	90	8 00
Cupressus macrocarpa, ( <i>Monterey Cypress</i> ), per flat.....			2 25
Durantia Plumieri, 100 plants per flat.....			4 00
Evonymus japonicus, 2½ in. pot.....	10	90	8 00
Eugenia myrtifolia, 2½ in. pot.....	10	75	6 00
Laurus tinus, 2½ in. pot.....	10	80	7 50
Ligustrum japonicum, 100 per flat, 15 to 25 in.....			4 00
balled, 3 to 4 ft.....	45	4 25	38 00
balled, 2 to 3 ft.....	35	3 25	30 00
Monterey cypress, 100 per flat.....			2 25
Myrtle, ( <i>Myrtus communis</i> ), 3½ in. pot.....	20	1 60	14 00
Pepper Tree, potted, 2 to 3 ft.....	25	2 25	20 00
potted, 1½ to 2 ft.....	15	1 25	
Pittosporum undulatum, 4 in. pot.....	20	1 20	
2½ in. pot.....	10	75	
Salt bush, cuttings, grow easily.....			2 00

## FERNS

	Each	per 10	per 100
Adiantum cuneatum, see Maiden Hair Fern.			
Alsophila australis, ( <i>Australian tree fern</i> ), 14 in. tub.....	4 00		
8 in. pot.....	1 75		
6 in. pot.....	1 00	9 00	
4 in. pot.....	75		
balled, 6 to 7 ft.....	8 00		
balled, 5 to 6 ft.....	6 00		
balled, 4 to 5 ft.....	4 00		
Asplenium dimorphum, potted, 25c and up.....			
nidus avis, ( <i>Bird nest</i> ), 8 in. boxes.....	1 50		
Boston fern, 8 in. pot, \$1 00 and up.....			
7 in. pot.....	75	6 50	
6 in. pot.....	50	4 50	
5 in. pot.....	40		
for planting in the open ground.....	20	1 60	14 00
Boston fern elegantissima, ( <i>Ostrich plume</i> ), 50c and up.....			
Boston Fern Piersoni, 6 in. pot.....	75		
Boston Fern Whitemani, 6 in. pot.....	1 00		
larger ones \$1 50 and up.			
Cyrtomium falcatum, balled, large plant, 75cts. and up.....			
Peris argyrea, Silver Fern, 5 in. pot.....	75		
tremula, 6 in. pot.....	75		
Selaginella, 6 in. pot.....	50		
Sword Fern, 12 in. pot.....	2 50		
6 in. pot.....	50		
for planting in the open ground.....	20	1 60	14 00

## DECIDUOUS TREES

	Each	per 10	per 100
Catalpa, bare rooted, 6 to 8 ft.....	75	6 00	
bare rooted, 4 to 6 ft.....	50	4 50	
Coral Tree ( <i>Erythrina</i> ), potted, 25cts. and up.			
bare rooted, large plant.....	1 00		
Elm ( <i>Ulmus</i> ) American, white, bare rooted, 8 to 10 ft.....	75		
bare rooted, 6 to 8 ft.....	50	4 50	
bare rooted, 4 to 6 ft.....	35	3 25	
Ginkgo biloba <i>Maiden Hair Tree</i> ), see conifers.			
Maple, ( <i>Acer</i> ), California, ( <i>macrophyllum</i> ), bare rooted, 6 to 8 ft.....	60		
Silver ( <i>dasycarpum</i> ), bare rooted, 3 to 4 ft.....	30		
bare rooted, 2 to 3 ft.....	25		
Mulberry ( <i>Morus</i> ), bare rooted, 3 to 4 ft.....	30		
bare rooted, 2 to 3 ft.....	25		
Locust ( <i>Robinia</i> ), bare rooted, 4 to 5 ft.....	35		
bare rooted 3 to 4 ft.....	30		
bare rooted, 2 to 3 ft.....	25		
Poplar, Lombardy, bare rooted, 6 to 8 ft.....	25		
Silver, bare rooted, 4 to 6 ft.....	25		
Sycamore, ( <i>Platanus</i> ), bare rooted, 4 to 6 ft.....	40		
bare rooted, 3 to 4 ft.....	30		
Texas Umbrella Tree, bare rooted, 6 to 7 ft.....	60		
bare rooted, 5 to 6 ft.....	50	4 00	
bare rooted, 4 to 5 ft.....	40	3 50	
Tulip Tree ( <i>Liriodendron</i> ), bare rooted, 2 to 3 ft.....	30		

## DECIDUOUS SHRUBS

	Each	per 10	per 100
Berberry ( <i>Berberis</i> ), <i>Thunbergii</i> , bare rooted.....	35	3 25	
balled.....	45	4 00	
Calycanthus floridus ( <i>Sweet Shrub</i> ), young plant, bare rooted	25		
Corchorus japonicus ( <i>Japanese Rose</i> ), bare rooted.....	40		
Crape Myrtle, ( <i>Lagerstroemia</i> ), bare rooted.....	40		
Deutzia crenata, bare rooted.....	40		
Lemon Verbena, ( <i>Lippia citriodora</i> ), 4-6 ft, bare rooted....	50		
4 to 6 ft, balled.....	60		
Ligustrum Ibota, ( <i>Privat</i> ), balled, 6 to 7 ft.....	1 50		
balled, 5 to 6 ft.....	1 25		
3½ in. pot.....	25	2 00	15 00
Lilac ( <i>Syringa</i> ), bare rooted, 4 to 5 ft.....	50		
bare rooted, 3 to 4 ft.....	40	3 50	
bare rooted, 2 to 3 ft.....	30	2 75	
Mock Orange, ( <i>Philadelphus</i> ), balled, 6 to 8 ft, very large...	1 50		
bare rooted, 6 to 8 ft, very large.....	1 25		
5½ in. pot.....	35		
3½ in. pot.....	25		
Poinciana Gillesii ( <i>Bird of Paradise</i> ), balled, 4 to 6 ft.....	75		
bare rooted.....	60		
Pomegranate, ( <i>Punica</i> ), 14 in. tub.....	1 00	9 00	
in varieties, 7 in. pot.....	60	5 00	
6 in. pot.....	40	3 50	
Snowball ( <i>Viburnum opulus</i> ), bare rooted, 3 to 4 ft.....	50		
bare rooted, 2 to 3 ft.....	40		
Spiraea Reevesiana ( <i>Bridal Wreath</i> ), bare rooted.....	50		
Tamarix africana, bare rooted, 8 to 10 ft.....	60	5 50	
bare rooted, 6 to 8 ft.....	50	4 50	
bare rooted, 4 to 6 ft.....	40	3 25	
Weigelia amabilis, bare rooted, 2 to 3 ft.....	35		
rosea, bare rooted, 2 to 3 ft.....	35		

## EVERGREEN TREES

	Each	per 10	per 100
<i>Acacia Baileyana</i> , 16 in. box, 8 to 10 ft.....	2 50		
6 in. pot.....	60		
4 in. pot.....	35	3 00	
2½ in. pot.....	25	2 25	
<i>cultriformis</i> , 14 in. tub.....	1 50		
<i>cyanophylla</i> , 5 in. pot.....	35	3 00	28 00
4 in. pot.....	25	2 25	20 00
<i>dealbata</i> , potted, 3 to 4 ft.....	35		
potted, 2 to 3 ft.....	25		
16 in. box, 8 to 10 ft.....	1 75		
<i>Farnesiana</i> , 4 in. pot.....	40		
<i>floribunda</i> , balled, 10 to 12 ft.....	2 25		
balled, 8 to 10 ft.....	1 75		
balled, 6 to 8 ft.....	1 25		
potted, 4 to 5 ft.....	50	4 00	
potted, 3 to 4 ft.....	40	3 50	30 00
potted, 2 to 3 ft.....	25	2 00	18 00
potted, 1½ to 2 ft.....	20	1 60	
<i>latifolia</i> , balled, 2 to 3 ft.....	60		
3½ in. pot.....	25	2 00	
<i>melanoxylon</i> , black, 16 in. box, 10 to 12 ft.....	2 25		
8 to 10 ft.....	2 00		
14 in. box, 8 to 9 ft.....	1 75	15 00	
7 to 8 ft.....	1 50	12 50	
potted, 6 to 7.....	75	6 00	
5 to 6 ft.....	50	4 25	
4 to 5 ft.....	35	3 25	
3 to 4 ft.....	25	2 25	
2 to 3 ft.....	20	1 50	
1½ to 2 ft.....	15	1 20	
balled, 8 to 10 ft.....	1 25	10 00	
6 to 8 ft.....	1 00	8 00	
<i>mollissima</i> , potted, 3 to 4 ft.....	35	3 00	
potted, 2 to 3 ft.....	25	2 25	
potted, 1½ to 2 ft.....	15	1 25	
14 in. box, 8 to 10 ft.....	1 75		
<i>pycnantha</i> , 17 in. box, 8 to 10 ft.....	2 50		
<i>Brachichyton (Sterculia) acerifolia</i> , ( <i>Flame Tree</i> ), balled, 1½ to 2 ft.....	60		
<i>diversifolia</i> , ( <i>Bottle Tree or Australian Poplar</i> ), balled, 7 to 8 ft.....	1 60	14 00	
balled, 6 to 7 ft.....	1 25		
balled, 5 to 6 ft.....	1 00		
balled, 4 to 5 ft.....	75		
balled, 3 to 4 ft.....	60		
<b>Bay Tree</b> , see <i>Laurus nobilis</i>			
<b>California mountain laurel</b> , ( <i>Oreodaphne californica</i> ), balled,			
5 to 6 ft.....	1 75		
balled, 4 to 5 ft.....	1 50		
balled, 3 to 4 ft.....	1 00	8 00	
balled, 2 to 3 ft.....	75	6 50	
balled, 1½ to 2 ft.....	50	4 50	
<b>Caesalpinia mexicana</b> , balled, 6 to 8 ft.....	1 50	12 50	
balled, 5 to 6 ft.....	1 25	11 00	
balled, 4 to 5 ft.....	1 00	8 00	
balled, 3 to 4 ft.....	75	6 50	



## EVERGREEN TREES—Continued

	Each	per 10	per 100
<b>Camphor Tree</b> , balled, 7 to 8 ft.....	2 50	22 50	
balled, standard, 6 to 7 ft.....	2 00	18 00	150 00
balled, standard, 5 to 6 ft.....	1 50	14 00	120 00
balled, standard, 4 to 5 ft.....	1 25	11 00	90 00
balled, standard, 3 to 4 ft.....	1 00	8 50	65 00
balled, standard, 2 to 3 ft.....	60	5 25	45 00
balled, bushy, 2 to 3 ft.....	60	5 25	45 00
balled, bushy, 1½ to 2 ft.....	50	4 25	35 00
4 in. pot.....	30	2 50	
2 in. pots.....	15		
<b>Casuarina equisetifolia</b> , ( <i>Beefwood</i> ), balled, 8 to 10 ft.....	1 50	12 50	
6 to 8 ft.....	1 10	9 00	
4 to 6 ft.....	75	6 00	50 00
3 to 4 ft.....	50	4 50	40 00
2 to 3 ft.....	40	3 50	
<b>stricta</b> , balled, 8 to 10 ft.....	1 60	14 00	
6 to 8 ft.....	1 20	10 00	
boxed, 8 to 10 ft.....	2 00		
<b>Ceratonia siliqua</b> , ( <i>St. John's Bread</i> ), 4 in. pot.....	50	4 00	35 00
3½ in. pot.....	40	3 00	25 00
2½ in. pot.....	25	2 00	16 00
balled, 3 to 4 ft.....	1 00	8 00	
balled, 2 to 3 ft.....	75	6 50	
<b>Dombeya natalensis</b> , 5 in. pot.....	1 00		
3½ in. pot.....	50		
2½ in. pot.....	35		
<b>Eriobotrya japonica</b> , see Loquat in fruit department.			
<b>Eucalyptus citriodora</b> , ( <i>Lemon scented Eucalyptus</i> ), potted, 2 to 3 ft.....	30		
<b>corynocalyx</b> , ( <i>Sugar Gum</i> ), 3½ in. pot.....	15	1 00	
100 in a flat.....			1 50
per 1000, \$12 00.....			
<b>ficifolia</b> , ( <i>Scarlet flowering</i> ), potted, 1 ft.....	25		
potted, 2 ft.....	50		
<b>globulus</b> ( <i>Blue gum</i> ), 3½ in. pot.....	10	75	
100 in a flat.....			1 35
per 1000, \$12.00.....			
<b>robusta</b> , 4 in. pot.....	15	1 00	
100 in a flat.....			1 50
<b>rostrata</b> , ( <i>Red gum</i> ), 100 in a flat.....			1 50
per 1000 \$12.00.....			
<b>rudis</b> , 100 in a flat.....			1 50
<b>Eugenia australis</b> , 2½ in. pot.....	10	75	6 00
4 in. pot.....	25	2 00	17 00
<b>Ficus australis</b> , ( <i>Rubber tree</i> ), 2½ in. pot.....	35		
balled, good plant.....	75		
<b>elastica</b> , ( <i>Assam rubber tree</i> ), 22 in. tub, 6 to 8 ft.....	7 50		
8 in. pot.....	1 50		
6 in. pot.....	1 00	8 60	
4 in. pot.....	50	4 00	
<b>Flame tree</b> , see <i>Brachichyton</i> .			
<b>Grevillea robusta</b> , ( <i>Silk Oak</i> ), 14 in. box, 6 to 8 ft.....	1 50	12 00	
5 in. pot, 4 to 6 ft.....	75	6 00	
4 in. pot.....	35	3 00	
2½ in. pot.....	15	1 00	



## EVERGREEN TREES—Continued

	Each	per 10	per 100
<i>Jacaranda mimosaeifolia</i> , 17 in. box.....	2 00		
14 in. box.....	1 75		
22 in. tub, 8 to 10 ft.....	3 50	30 00	
balled, 8 to 10 ft.....	2 25		
balled, 6 to 8 ft.....	1 50	12 50	
balled, 5 to 6 ft.....	1 25	10 00	
balled, 4 to 5 ft.....	1 00	8 00	
balled, 3 to 4 ft.....	75	6 50	
balled, 2 to 3 ft.....	50		
<i>Hymenosporum flavum</i> , balled, 3 to 4 ft.....	1 00		
balled, 2 to 3 ft.....	75		
<i>Lagunaria Pattersoni</i> , 2½ in. pot.....	20		
balled, 5 to 6 ft.....	1 60		
balled, 4 to 5 ft.....	1 20	10 00	
balled, 3 to 4 ft.....	75	6 00	50 00
balled, 2 to 3 ft.....	50	4 50	
<i>Laurus nobilis</i> , ( <i>Sweet Bay Tree</i> ), balled, 4 to 4½ ft. stem, crown 24 to 30 in.....	6 00	50 00	450 00
balled, 4 to 4½ ft. stem, crown 20 to 24 in.....	5 00	40 00	350 00
<i>Leucadendron argenteum</i> , see Silver Tree.			
Loquat see fruit department.			
<i>Magnolia grandiflora</i> , balled and grafted, 5 to 6 ft.....	2 50		
4 to 5 ft.....	2 00		
3 to 4 ft.....	1 60		
2 to 3 ft.....	1 25		
balled, from seeds, 2 to 3 ft.....	75	6 00	50 00
1½ to 2 ft.....	50	4 50	40 00
potted, 2 to 3 ft.....	75		
2½ in. pot.....	20		
<i>Melaleuca</i> species, balled, 6 to 7 ft.....	2 00		
balled, 5 to 6 ft.....	1 60	14 00	
balled, 4 to 5 ft.....	1 25	11 00	
balled, 3 to 4 ft.....	1 00		
<i>Oreodaphne californica</i> , see California Mountain Laurel.			
Oak, California, ( <i>Quercus agrifolia</i> ), balled, 6 to 7 ft.....	1 75	15 00	
5 to 6 ft.....	1 30	11 00	90 00
4 to 5 ft.....	1 00	8 00	70 00
4 in. pot.....	40	3 00	25 00
2½ in. pot.....	20	1 50	
Cork Oak ( <i>Suber</i> ), balled, young plant.....	45		
<i>Parkinsonia aculeata</i> , 4 in. pot, 1½ to 2 ft.....	1 00		
Pepper Tree, ( <i>Schinus molle</i> ), 14 in. box.....	2 00		
6 in. pot.....	35		
4 in. pot.....	25		
balled, 6 to 8 ft.....	1 50		
balled, 4 to 6 ft.....	1 00		
<i>Pircunia dioica</i> , 6 in. pot.....	75		
<i>Pittosporum phylliraeoides</i> , 2½ in. pot.....	35		
4 in. pot.....	75		
balled, 3 to 4 ft.....	2 00		
balled, 2 to 3 ft.....	1 25	10 00	
<i>rhombifolia</i> , 2½ in. pot.....	25		
<i>undulatum</i> , 16 in. box, standard, 6 to 8 ft.....	3 50	30 00	
4 in. pot.....	30	2 50	
3½ in. pot.....	20	16 00	
2½ in. pot.....	15	12 00	
balled, standard, 6 to 7 ft.....	1 75	15 00	
5 to 6 ft.....	1 50	12 00	100 00
4 to 5 ft.....	1 25	10 00	80 00
3 to 4 ft.....	1 00	8 00	
2 to 3 ft.....	75	6 00	
see also evergreen shrubs.			

EVERGREEN TREES—Continued

	Each	per 10	per 100
<i>Quercus</i> , see oak.			
Silver Tree, ( <i>Leucadendron argenteum</i> ), potted, 1 foot.....	2 50		
balled, 1 foot.....	2 50	20 00	175 00
balled, 1½ foot.....	3 00	25 00	225 00
2 ft.....	4 00		
4 to 5 ft.....	10 00		
<i>Schinus therebentifolius</i> , 22 in. tub, nice crown.....	3 50	30 00	
potted, 7 to 8 ft.....	1 00	8 00	
potted, 6 to 7 ft.....	80	6 00	50 00
potted, 5 to 6 ft.....	70	5 00	
potted, 4 to 5 ft.....	50	4 00	
<i>Sterculia</i> , see <i>Brachichyton</i> .			
Sweat Bay Laurel, see <i>Laurus nobilis</i> .			

EVERGREEN SHRUBS

<i>Abelia rupestris</i> , 4 in. pot.....	25		
balled, 3 to 4 ft.....	60		
<i>Abutilon hybrida</i> , 6 in. pot.....	60		
5½ in. pot.....	45		
balled, very large.....	1 75		
Silver, 6 in. pot.....	60		
balled, very large.....	1 75		
dwarf Thompsoni, golden, balled, large plant.....	1 25		
<i>Achania malva viscus</i> , 7 in. pot.....	60		
<i>Aralia japonica</i> , 8 in. pot, 5 to 6 ft.....	75		
6 in. pot.....	50	4 00	
4 in. pot.....	25	2 00	
papyrifera, ( <i>Paper plant</i> ), 6 in. pot.....	50		
4 in. pot.....	35		
<i>Bauhinia purpurea</i> , 2½ in. pot.....	35	3 00	
Bottle Brush, see <i>Metrosideros</i> .			
<i>Brachyzema</i> species, balled, strong plant.....	1 25		
Broom, see <i>Genista</i> and <i>Spartium</i> .			
<i>Browallia Czeraniakowski</i> , blue, strong plant.....	10	75	5 00
Roetzlii, white, strong plant.....	10	75	5 00
speciosa major, 4 in. pot, blue.....	25	2 00	
Burning Bush, see <i>Crataegus pyracantha</i> .			
<i>Buxus sempervirens</i> , ( <i>Box plant</i> ), balled, 2 to 3 ft.....	75		
<i>Calceolaria</i> species, 4 in. pot.....	25	2 00	
<i>Camellia japonica</i> , 14 in. box, from seed, 7 to 8 ft.....	5 00	40 00	
14 in. box, from seed, 6 to 7 ft.....	4 00	34 00	
14 in. box, from seed, 5 to 6 ft.....	3 00	27 00	
balled, from seed, 7 to 8 ft.....	3 75	32 00	
balled, from seed, 6 to 7 ft.....	3 00	27 00	
balled, from seed, 5 to 6 ft.....	2 25	20 00	
balled, double, different colors, 2 to 3 ft.....	1 50	12 50	
balled, double, different colors, 1½ to 2 ft.....	1 00	9 00	
balled, double, imported, assorted, 1½ to 2 ft.....	2 00	17 00	
balled, double, imported, assorted, 1 to 1½ ft.....	1 50	12 50	
potted, double, from 1 00 to 2 00.....			
<i>Cassia corymbosa</i> , potted, 5 to 6 ft.....	50	4 00	
potted, 4 to 5 ft.....	35	3 00	
potted, 3 to 4 ft.....	25	2 00	
potted, 2 to 3 ft.....	20	1 75	
artemisoides, 4 in. pot.....	35	2 00	20 00
2 in. pot.....	10	7 50	
<i>Cerasus ilicifolia</i> , balled.....	50		
<i>Cestrum aurantiacum</i> , in box, large plant.....	1 75		
6 in. pot.....	50	4 00	
3½ in. pot.....	25	2 00	
<i>Choysia ternata</i> , balled, 2 to 3 ft.....	75		
balled, 1½ to 2.....	50		

## EVERGREEN SHRUBS—Continued

	Each	per 10	per 100
Christmas Berry, see <i>Heteromeles</i> .			
<i>Clianthus puniceus</i> , 3½ in. pot.....	25	2 25	
2½ in. pot.....	20		
<i>Coprosma Bauceri</i> , 17 in. box.....	3 00		
14 in. box.....	2 00	15 00	
6 in. pot.....	75	6 00	
5 in. pot.....	50	4 00	
balled, 5 to 6 ft.....	1 50	12 50	
balled, 4 to 5 ft.....	1 00	8 00	
<i>Coronilla emeroides</i> , 3½ in. pot.....	25	2 00	
2½ in. pot.....	15	1 25	
balled, 3 to 4 ft.....	1 00	7 50	
<i>glauca</i> , 14 in. boxes.....	1 25	11 00	
9 in. pot.....	75	6 00	
2½ in. pot.....	20		
balled.....	75	6 00	
<i>glauca variegata</i> , young plant.....	25		
<i>Crataegus pyracantha</i> , ( <i>Burning bush</i> ), balled, 3 to 4 ft.....	1 00		
balled, 2 to 3 ft.....	75		
2½ in. pot.....	10	90	8 00
<i>Cuphea platycentra</i> ( <i>Cigar plant</i> ), 2½ in. pot.....	20	1 50	
balled, strong plant.....	45		
<i>Daphne odora</i> , balled, 3 to 4 ft.....	1 25		
balled, 2 to 3 ft.....	1 00		
<i>Datura suaveolens</i> , ( <i>Angel trumpet</i> ), 6 in. pot.....	50		
5 in. pot.....	35		
balled, 5 to 7 ft., large plant.....	2 00		
<i>Digitalis canariensis</i> , 3½ in. pot rare.....	45		
<i>Diosma ericoides</i> , ( <i>Breath of heaven</i> ), 2½ in. pot.....	20		
balled.....	50		
<i>Durantia Plumieri</i> , light blue, in boxes, 4 to 6 ft.....	1 25		
2½ in. pot.....	20		
balled, 6 to 7 ft.....	1 50		
balled, 5 to 6 ft.....	1 25		
balled, 4 to 5 ft.....	1 00	7 50	
balled, 3 to 4 ft.....	75	6 00	
balled, 2 to 3 ft.....	60		
100 per flat.....			4 00
<i>brachypoda</i> , 3½ in. pot.....	25		
<i>Ellisiae</i> , 3½ in. pot.....	25		
<i>Erica</i> ( <i>Heath</i> ) <i>cinera carnea</i> , 5 in. pot.....	90		
<i>mediterranea</i> , balled, 2 to 3 ft.....	60	5 00	
balled, 1½ to 2 ft.....	40	3 00	
<i>Erythrina crista galli</i> , ( <i>Coral tree</i> ), 6 in. pot.....	40		
bare rooted, large plant.....	1 00		
<i>Escallonia alba</i> , balled, large.....	1 25	10 00	
medium.....	75	6 50	
<i>montevicensis</i> , balled, large.....	1 25	10 00	
medium.....	75	6 50	
<i>Eugenia apiculata</i> , balled, young plant.....	45		
<i>myrtifolia</i> , balled, 2 to 3 ft.....	1 00		
1½ to 2 ft.....	75		
1 to 1½ ft.....	50		
4 in. pot.....	25	2 00	17 00
2½ in. pot.....	10	75	6 00
<i>ugni</i> , balled, young plant.....	45		
<i>Euphorbia splendens</i> , balled.....	75		
<i>Evonymus japonicus</i> , balled, 2 to 3 ft.....	60	5 50	
balled, 1½ to 2 ft.....	40	3 50	
<i>jap. argentea</i> var, balled, trimmed, 3 to 4 ft.....	1 25		
balled, trimmed, 2 to 3 ft.....	1 00		
2½ in. pot.....	15	1 20	10 00

## EVERGREEN SHRUBS—Continued

	Each	per 10	per 100
<i>Jap. aures</i> var., balled, trimmed, 3 to 4 ft.....	1 25		
balled, trimmed, 2 to 3 ft.....	1 00		
balled, trimmed, 1 to 2 ft.....	60		
2 in. pot.....	15	1 20	10 00
radicans, 2½ in. pot.....	20		
<i>Fabiana imbricata</i> , balled, 4 to 5 ft.....	1 00		
balled, 3 to 4 ft.....	75		
3½ in. pot.....	25		
<i>Fuchsia</i> , selected varieties, 7 in. pot.....	60	5 00	
6 in. pot.....	50	4 00	
5 in. pot.....	35	3 00	
4 in. pot.....	25	2 00	
<i>boliviana</i> , 3½ in. pot.....	25	2 25	
<i>corymbiflora</i> , 14 in. box, standard.....	2 50		
2½ in. pot.....	20	1 50	
<i>gracilis</i> , 3½ in. pot.....	25		
<i>Genista canariensis</i> , balled, 6 to 8 ft.....	1 50	12 50	
balled, 5 to 6 ft.....	1 00	8 00	
balled, 4 to 5 ft.....	60	5 00	
3½ in. pot.....	25	2 00	16 00
2½ in. pot.....	15	1 25	10 00
<i>monosperma alba</i> , white, 2½ in. pot.....	25		
<i>candicans</i> , standard, balled, 5 to 8 ft.....	1 25	11 00	
<i>Grevillea Thelemannii</i> , 14 in. boxes, 2 to 3 ft.....	1 50	14 00	120 00
balled, 3 to 4 ft.....	1 50	14 00	
balled, 2 to 3 ft.....	1 00	9 00	
balled, 1½ to 2 ft.....	75	6 50	
3 in. pot.....	25		
<i>Habrothamnus elegans</i> , balled, large plant.....	1 25	10 00	
balled, medium.....	1 00	7 50	
balled, smaller.....	75	6 00	
<i>Hakea pugioniformis</i> , balled, 2 to 3 ft.....	90	7 50	60 00
balled, 1½ to 2 ft.....	60	5 00	
<i>Hardenbergia monophylla</i> , 4 in. pot.....	35	3 00	
2½ in. pot.....	20		
Heath, see <i>Erica</i> .			
<i>Heliotropium</i> , selected varieties, purple, white and giant purple, 8 in. box.....	60		
4 in. pot.....	25	2 00	15 00
balled, large plant.....	75	6 00	
<i>Heteromeles arbutifolia</i> , ( <i>Christmas Berry</i> ), 3 in. pot.....	35	3 00	
2½ in. pot.....	25	2 00	
balled, 1½ to 2 ft.....	75		
<i>Hibiscus rosa sinensis</i> , 14 in. box, 3 to 4 ft.....	1 50	12 50	
crimson, scarlet, pink, double and single, 14 in. box 2 to 3 ft.....	1 25	10 00	
5 in. pot.....	50	4 00	
4 in. pot.....	35		
balled, 3 to 4 ft.....	1 00	8 00	
balled, 2 to 3 ft.....	60	5 00	
<i>Hydrangea hortensis</i> , 4 in. pot.....	25	2 00	
balled, large plant.....	75	6 00	
balled, medium.....	45	4 00	
<i>Hypericum canariensis</i> , 3½ in. pot, new.....	35	3 00	25 00
<i>floribundum</i> , balled, 3 to 4 ft.....	75	6 00	55 00
2 to 3 ft.....	60	5 00	47 00
2½ in. pot.....	20	1 75	
<i>Mooserianum</i> , 5 in. pot.....	50		
4 in. pot.....	35		
3½ in. pot.....	25		
<i>patulum</i> , balled, 2 to 3 ft.....	75	6 00	55 00
1½ to 2 ft.....	50	4 50	40 00



## EVERGREEN SHRUBS—Continued

	Each	per 10	per 100
<i>Iochroma lanceolatum</i> , purple, balled, 6 to 8 ft.....	1 50	12 50	
5 to 6 ft.....	1 25	11 00	
4 to 5 ft.....	1 00	8 00	
3 to 4 ft.....	75	6 00	
<i>Jacobinia magnifica</i> , 3½ in. pot.....	25	2 25	
2½ in. pot.....	20	1 75	15 00
balled, 3 to 4 ft.....	1 00	8 00	
2 to 3 ft.....	75	6 00	
<i>Lantana splendens</i> , assorted varieties 3½ in. pot.....	15	1 25	
2½ in. pot.....	10	75	
weeping, 2½ in. pot.....	10	75	
<i>Laurus nobilis</i> , balled, shrub, 3 to 4 ft.....	1 50		
see trees for standards.			
<i>Laurus tinus</i> , balled, 6 to 7 ft.....	1 25		
balled, 3 to 4 ft.....	75	6 00	
balled, 2 to 3 ft.....	60	5 00	
2½ in. pot.....	10	80	
<i>rotundifolia</i> , balled, 4 to 5 ft.....	1 00	8 00	
balled, 3 to 4 ft.....	75	6 00	
<i>Leptospermum laevigatum</i> , balled, 3 to 4 ft.....	1 00		
balled, 2 to 3 ft.....	75		
<i>Libonia floribunda</i> , balled, 2 to 3 ft.....	75	6 00	
balled, 1 to 2 ft.....	40	3 50	
6 in. pot.....	40		
<i>Ligustrum (Privet) coriaceum</i> , balled, rare, 2 to 3 ft.....	2 00		
<i>japonicum</i> , balled, 4 to 5 ft.....	60		
3 to 4 ft.....	45	4 00	38 00
2 to 3 ft.....	35	3 25	30 00
100 per flat, 15 to 25 in.....			4 00
<i>armuriense</i> , balled, 3 to 4 ft.....	50	4 50	
<i>Ibota</i> , see deciduous shrubs.			
<i>ovalifolium</i> , golden balled, 3 to 4 ft.....	1 00		
balled, 2 to 3 ft.....	75		
2½ in. pot.....	25		
<i>McKaya bella</i> , 4 in. pot.....	35		
<i>Melaleuca decussata</i> , balled, 2 to 3 ft.....	50		
<i>hypericifolia</i> , balled, 4 to 6 ft.....	1 00		
3 to 4 ft.....	70		
<i>Metrosideros semperflorens</i> , ( <i>Bottle Bush</i> ), balled, 3 to 4 ft...	90	7 50	
2 to 3 ft.....	60	5 50	
<i>robusta</i> , 2½ in. pot.....	20	1 50	12 00
<i>Myrtle (Myrtus) communis</i> , 3½ in. pot.....	20	1 60	14 00
<i>microphylla</i> , 2 in. pot.....	15	1 25	
<i>Nierembergia</i> , 2½ in. pot.....	20	1 75	
<i>Oleander (Nerium)</i> , balled, 5 to 6 ft.....	1 25	10 00	
in assorted varieties, balled, 4 to 5 ft.....	1 00	9 00	
balled, 3 to 4 ft.....	75	6 50	
<i>Pachystema myrsinetes</i> , balled, 2 to 3 ft.....	75		
<i>Pittosporum crassifolium</i> , 2½ in. pot.....	20		
balled, 4 to 5 ft.....	1 00	8 00	
balled, 3 to 4 ft.....	75	6 50	
balled, 2 to 3 ft.....	60	5 00	40 00
<i>eugenoides</i> , 22 in. tub.....	5 00		
14 in. box.....	3 50		
3½ in. pot.....	25		
balled, 4 to 5 ft.....	1 25	11 00	
balled, 3 to 4 ft.....	80	7 00	
balled, 2 to 3 ft.....	60	5 50	
<i>phylliraeoides</i> , 2½ in. pot.....	35		
balled, 2 to 3 ft.....	1 50		
balled, 1½ to 2 ft.....	1 00		
<i>Tobira</i> , balled, young plant.....	50		
2½ in. pot.....	25		



## EVERGREEN SHRUBS—Continued

	Each	per 10	per 100
<i>Tobira variegata</i> , balled, 1½ to 2 ft.....	50		
2½ in. pot.....	25		
<i>undulatum</i> , 17 in. box.....	2 50		
4 in. pot.....	25	2 00	
3½ in. pot.....	20	1 75	
2½ in. pot.....	15	1 25	
see also tree department.			
<i>Plumbago capensis</i> , 14 in. box.....	1 50		
6 in. pot.....	50		
5 in. pot.....	40		
balled, large plant.....	75	6 50	
white, 5 and 6 in. pot.....	50	4 50	
<i>Foinsettia pulcherrima</i> , potted, 6 to 8 ft.....	1 25	11 00	
potted, 5 to 6 ft.....	1 00	9 00	
pot ted, 4 to 5 ft.....	75	6 50	
potted, 3 to 4 ft.....	50	4 50	
potted, 2 to 3 ft.....	35	3 00	
potted, 1½ to 2 ft.....	30	2 50	
pot ted, 1 to 1½ ft.....	25	2 00	
potted plant, small.....	20	1 75	
<i>Polygona Dalmaisiana</i> , balled, large plant.....	75		
<i>Polygonatum</i> , balled, 5 to 6 ft.....	1 25		
balled, 4 to 5 ft.....	1 00		
balled, 3 to 4 ft.....	75		
<i>Raphiolepis indica</i> , 2 in. pot.....	20	1 50	12 00
balled, young plant.....	50		
<i>Rhamnus californicus</i> , ( <i>California Coffee Plant</i> ), 4 in. pot... 3 in. pot.....	35 25		
balled, 2 to 3 ft.....	55		
1½ to 2 ft.....	50		
<i>Rubus flore pleno</i> , balled, 3 to 4 ft.....	75		
<i>Russelia juncea</i> , 2½ in. pot.....	10		
balled.....	50		
<i>Salvia coccinea</i> , 6 in. pot.....	60		
<i>Senecio cineraria</i> , balled, 3 to 4 ft.....	1 00		
balled, 2 to 3 ft.....	75		
<i>Solanum acanthocarpum</i> , 4 in. pot.....	35	3 00	
<i>atropurpureum violaceum</i> , 6 in. pot.....	50		
4 in. pot.....	35	3 00	
<i>auriculatum</i> , 4 in. pot.....	35	3 00	
<i>Balbisii</i> , 4 in. pot.....	35	3 00	
<i>capsicastrum</i> , 4 in. pot.....	35	3 00	
2½ in. pot.....	20		
<i>cabiliense argenteum</i> , 4 in. pot.....	35		
<i>cyananthum</i> , 5 in. pot.....	50		
<i>haematocarpum</i> , 3½ in. pot.....	25	2 00	
<i>giganteum</i> , 3½ in. pot, a giant species.....	35	3 00	
<i>Hendersoni</i> , 3½ in. pot.....	25	2 00	
<i>laciniatum</i> , 4 in. pot.....	25		
<i>macranthum</i> , 3 in. pot.....	60		
<i>nava</i> , 3½ in. pot.....	25		
<i>Portmani</i> , 3½ in. pot.....	25		
<i>pycnanthum</i> , 4 in. pot.....	35		
3½ in. pot.....	25		
<i>Rantoneti</i> , 6 in. pot.....	45		
<i>robustum</i> , 6 in. pot.....	50		
<i>Seafortianum</i> , 4 in. pot.....	35		
3½ in. pot.....	25		
<i>spudocapsicum</i> , ( <i>Jerusalem Cherry</i> ), 4 in. pot.....	25		
<i>Warszewiczii</i> , 6 in. pot.....	50		
4 in. pot.....	35		
<i>Weatherillei</i> , 3½ in. pot.....	25		



Under the Banana Plants at the "EXOTIC NURSERIES."

## EVERGREEN SHRUBS—Continued

	Each	per 10	per 100
<i>Spartium junceum</i> , ( <i>Spanish Broom</i> ), 3½ in. pot.....	20	1 75	
balled, 6 to 8 ft.....	1 50	12 00	
5 to 6 ft.....	1 10	9 00	
4 to 5 ft.....	75	6 50	
3 to 4 ft.....	60	5 00	
2 to 3 ft.....	45	4 00	
<i>Streptosolon Jamesoni</i> , 3 in. pot.....	15		
balled, large.....	1 25	11 00	
medium.....	75	6 50	
<i>Tecoma, capensis</i> , 5 in. pot.....	35	3 00	
balled, large plant.....	1 00	9 00	
medium plant.....	75	6 50	
<i>Stans</i> , 3½ in. pot.....	25		
2½ in. pot.....	20		
balled, 4 to 5 ft.....	1 00	9 00	
balled, 3 to 4 ft.....	75	6 50	
balled, 2 to 3 ft.....	50	4 00	
balled, 1½ to 2 ft.....	40	3 75	
<i>Veronica hybrida</i> , balled, large plant.....	75	6 00	
potted.....	25		
<i>hybrida variegata</i> , 2½ in. pot.....	20		
balled.....	45		
<i>Wigandia urens</i> , balled.....	1 00		

HERBACEOUS, BEDDING, BORDER  
PLANTS, ETC.

	Each	per 10	per 100
<i>Achyranthes Vershaffelti</i> , 3 or 4 in. pot.....	10	75	7 00
<i>Agave americana</i> , large.....	1 00	7 50	
medium.....	50		
small.....	25		
<i>Americana variegata</i> , 3 to 4 ft.....	2 00		
2 to 3 ft.....	1 50		
1½ to 2 ft.....	1 00		
1 to 1½ ft.....	50		
small.....	25		
<i>horrida</i> , young plant.....	25		
<i>Aloe arborescens</i> , large plant.....	1 50		
medium.....	1 00		
smaller.....	50		
cutting.....	15		
<i>Ageratum mexicanum</i> , in pot.....	10	70	
<i>Aspidistra elatior</i> , balled in large clump.....	1 50		
balled in medium clump.....	1 00		
balled in small clump.....	75		
<i>elatior variegata</i> , in clump.....	2 00	17 00	
in clump.....	1 50	12 50	
in clump.....	75		
<i>Begonia</i> , in varieties, balled, 3 to 4 ft.....	1 00		
balled, 2 to 3 ft.....	75		
balled, 1½ to 2 ft.....	50		
in pot, young plant.....	15	1 20	10 00
<i>Vernon</i> .....	10	80	7 00
<i>rex</i> , 8 in. pot.....	1 50		
6 in. pot.....	90		
5 in.....	60		
<i>Bellis perennis</i> .....	05	30	2 00
<i>Brachycoma</i> ( <i>Swan River Daisy</i> ), potted.....	10	80	7 00
<i>Browallia hybrida</i> .....	10	75	7 00
<i>Cineraria maritima</i> , ( <i>Dusty Miller</i> ), potted.....	10	75	7 00



## HERBACEOUS, BEDDING, BORDER PLANTS, ETC.—Continued

	Each	per 10	per 100
Carnations, leading varieties, balled, large.....	45	4 00	
medium.....	25	2 20	
small.....	15	1 40	
young plant.....	10	50	
Carex japonica, var. 6 in. pot.....	75		
Choenostoma hispidum, 3 in. pot.....	15	1 25	
Chrysanthemum, assorted colors.....	20		
Coleus, 2½ in. pot.....	10		
Cyperus alternifolius, balled, large plant.....	1 00	7 50	
balled, medium.....	50		
young plant.....	15		
Cypripedium insigne, 5 in. pot.....	2 50		
Cuphea platycentra, balled, large.....	45		
young plant.....	20		
Dasylyrion, balled, 2 to 3 ft.....	1 25		
balled, 1½ to 2 ft.....	90		
Dusty Miller, see Cineraria maritima.			
Echeveria.....	05	40	3 00
Fourcroya gigantea, very large plant.....	1 00	8 00	
gigantea variegata, 3 to 4 ft.....	1 50		
Gazania splendens, large plant.....	50		
small plant.....	15		
Geranium, assorted, 4 in. pot.....	10	80	7 50
2½ in. pot.....		60	5 00
Gynerium argenteum, large clump.....	75		
Immantophyllum miniatum, large clump.....	2 00		
small clump.....	75		
Justicia bicolor, 4 in. pot.....	25		
Heuchera rosea, balled.....	15	1 20	10 00
Hollyhocks, in pot.....	10	60	
Impatiens sultani, 2½ in. pot.....	10		
Lavendula vera, balled, good plant.....	25		
Lippia repens, per ft. square.....	20	1 80	15 00
Lobelia erimus, in box.....			2 50
Marguerite, 4 in. pot.....	20	1 75	15 00
Mentha officinalis variegated, 2½ in. pot.....	10	75	
Mesembryanthemum dwarf, ( <i>Ice Plant</i> ), square foot.....	25	2 00	17 00
large kinds, cuttings rooted.....			5 00
Musa ensete, 14 in. tub, 4 to 5 ft.....	1 50	12 00	
potted, 3 to 4 ft.....	1 00	8 00	70 00
potted, 2 to 3 ft.....	70	6 50	55 00
1½ to 2 ft.....	50	4 50	40 00
small plant.....	20		
fruit kind, large plant.....	1 25		
Nierembergia, 2½ in. pot.....	20	1 75	
balled.....	45		
Ophiopogon japonicus variegated, 7 in. pot.....	1 25		
Papyrus antiquorum ( <i>Paper Plant</i> ), balled, large.....	1 00		
balled, medium.....	50		
balled, small.....	25		
Phalangium lineare variegated, balled, large.....	75		
balled, medium.....	50		
7 in. pot.....	75		
Petunia, assorted.....	10		
Pentstemon, 3½ in. pot.....	10	75	6 00
2½ in. pot.....		50	
Pilea ( <i>Artillery Fern</i> ), 8 in. pot.....	75		
6 in. pot.....	50		
2½.....	20		
Phlox perpetual, balled.....	35		
Phormium tenax ( <i>New Zealand Flax</i> ), balled, large plant...	2 00		
medium plant.....	1 25		



## HERBACEOUS, BEDDING, BORDER PLANTS, ETC.—Continued

	Each	per 10	per 100
Primrose obconica, 4 in. pot.....	25	2 00	
Rudbeckia ( <i>Golden Glow</i> ), 4 in. pot.....	20	1 75	
3½ in. pot.....	15	1 25	
Salvia splendens, 4 in. pot.....	25		
2½ in. pot.....	10		
Sanseveria zeylanica, 8 in. pot.....	1 50		
6 in. pot.....	1 00		
small plant, bare rooted.....	25		
Santolina, 3 in. pot.....		75	
Saxifraga tomentosa.....	10	75	5 00
Shasta Daisies, improved varieties, 2½ in. pot, from cuttings .	10	75	
2½ in. pot, from seeds.....	10	50	
large clump.....	60		
medium clump.....	50		
Statice tomentosa, 4 in. pot.....	25		
Strelitzia reginae, balled, 1 foot.....	1 50		
balled, young plant.....	75		
balled, clump, \$5 00 and up.....			
Tradescantia zebrina.....	20		
Tritoma uvaria, balled, clump.....	50		
small plant.....	25		
Verbena, assorted, in pot.....	10	75	
seedlings.....	05	35	2 00
Vinca, common.....	05	40	3 00
variegated.....	05	40	3 00
Violets, <i>Princess of Wales</i> .....	05	45	4 00
Swanley White.....	10	60	5 00
Yucca aloifolia, balled, 5 to 6 ft.....	2 50		
balled, 4 to 5 ft.....	1 50	12 00	
balled, 3 to 4 ft.....	1 00		
aloifolia variegated, good plant.....	50		
smaller plant.....	35		

## BULBOUS AND TUBEROUS PLANTS

	Each	per 10	per 100
Agapanthus umbellatus, large clump.....	1 00	8 00	
young plant.....	20	1 50	
Amaryllis belladonna, large bulb.....	15	1 25	11 00
Johnsoni.....	15	1 25	11 00
Begonia tuberosus, assorted.....	10		
tuberosus, latest new.....	20		
Caladium esculentum, large root.....	25		
medium.....	15		
Canna, balled, larger clump.....	1 00	8 00	
balled, large clump.....	75	6 00	
small plant.....	10	75	6 00
Convallaria majalis.....	08	70	
Crocus, Cloth of Gold, unsatisfactory in this country.....	05	15	
Cyclamen, assorted, 6 in. pot.....	50	4 50	
4 in. pot.....	35	3 00	
3 in. pot.....	20	1 75	
Dahlia cactus.....	20	1 50	
Arborea, large plant.....	1 00		
medium.....	50		
Freesia, large bulbs.....		15	1 00
Gladiolus.....	05	35	2 00
Hyacinths, single.....	10	75	5 00
double.....	15	1 25	10 00
Iris, assorted, good plant.....	25	2 00	
Jonquils.....		20	1 50
Lilies, ( <i>Easter</i> ).....	15	1 40	

## BULBOUS AND TUBEROUS PLANTS—Continued

	Each	per 10	per 100
Montbretia.....	05	25	2 00
Narcissus.....			
Narcissus, trumpet, single.....	05	30	2 50
DOUBLE, DAFFODIL.....	10	50	4 00
Chinese.....		15	1 00
poeticus.....	05	35	
Oxalis.....		15	1 00
Polyanthus narcissus, paper white.....	05	30	2 50
Richardia africana, ( <i>Calla Lily</i> ).....	05	50	4 00
Watsonia.....	10	80	
Tuberoses.....	05	40	
Tulip single.....	05	25	
double.....	10	50	

## ROSES

Santa Barbara is known for the fine growth of its roses. We have all leading varieties, giving general satisfaction.

Order your bare rooted rose bushes during the winter (end December, January and February). Large roses can be ordered most any time during the year. We have also a large assortment in pots available the year round.

## ABBREVIATIONS

Bank—Banksia.	H. C.—Hybrid China.
B—Bourbon.	M—Multiflora.
C—Cherokee.	N—Noisette.
Cl—Climbing.	P—Polyantha.
H. T.—Hybrid Tea.	Pr—Prairie.
H. P.—Hybrid Perpetual.	T—Tea.

## PRICES

	1 00	75	Each	per 10	per 100
Balled according size.....			60		
boxed.....			50	4 50	42 50
according size, potted.....	50	40	25		
bare rooted.....			25	2 00	17 50

N. B.—We have some very large climbing roses able to cover a building in very short time.

Note:—The best pink rose is Mamam Cochet. The best red rose is Ulrich Brunner.

## NAMES OF DIFFERENT NEWER VARIETIES

- Baby Rambler—P. Dwarf Everblooming Crimson.
- Climbing Bridesmaid—Tea, Bright Pink.
- Climbing Kaiserin Augusta Victoria—H. T. White.
- Climbing Mme. Caroline Testout—H. T. Clear Pink.
- Climbing Meteor—H. T. Deep Crimson.
- Ivory—Tea, Pure White.
- Marechal Niel—N. Deep Sulphur Yellow. Cl.
- Lady Gay—P. Bright Pure Rose Color.
- Richmond—H. T. Red.
- White Mamam Cochet—Tea, Pure White.

## GENERAL COLLECTION

Agrippina—B. Red.	Mme. Caroline Testout—H. T. Pink.
Archiduke Charles.	Mme. Dupuy.
Baby Rambler—P. Red.	Mme. Lombard—T. Red.
Beauty of Glazenwood—Bank Copper.	Magna Charta—H. T. Pink.
Bride—T. White.	Mamam Choche—T. Pink.
Bridesmaid—T. Pink.	Marie Van Houtte—T. Straw, Pink Edge.
Captain Christy—H. P. Pink.	Marechal Niel—N. Yellow.
Caroline Kuster—(Terra Cotta).	Marquis de Querhoent—T. Yellow and Copper.
Catherine Mermet—T. Pink.	Meteor Climbing—H. T. Crimson.
Cecil Brunner—P. Salmon Pink.	Mrs. John Laing—H. P. Pink.
Chromatella—N. Yellow Cl.	Mrs. Wagram—H. T. Shell Pink.
Cherokee—C. White. Single, Cl.	Papa Gontier—T. Red.
Cherokee—Double. C. White.	Queen Scarlet—B. Red.
Climbing Cecil Brunner—P. Salmon Pink.	Queen of Edgley—H. P. Pink.
Climbing Malmaison—B. Pink.	Rainbow—T. Striped.
Clothilde Soupert—Pinkish White.	Rainbow—Improved.
Coquette de Lyon—T. Yellow.	Reine Marie Henrietta—T. Red Cl.
Crimson Rambler.	Reine Olga of Wurtemberg—H. T. Red.
Dorothy Perkins—P. Pink.	Reve d'Or—N. Apricot Yellow.
Duchesse de Brabant—T. Pink.	Safrano—T. Yellow.
Etoile de France. T. Yellow.	Solfaterre—N. Sulphur.
Duchesse de Brabant—T. Pink.	Teplitz—H. T. Red.
Franciska Kruger—T. Copper Pink.	The Queen—SnoR White.
Gainsborough—H. T. Flesh.	Souvenir de Malmaison—Pink.
Gloire de Dijon—T. Buff, Cl.	Souvenir de Pierre Notting—H. T.
Gloire de Margottin—H. P. Red.	Ulrich Brunner—H. P. Red.
Gloire de Rosamond—Red.	White Banksia—Bank, White, Cl.
Helen Gould—H. T. Pink.	White Malmaison—White.
Ivory—T. White.	White Mamam Cochet—T. White.
James Sprunt—B. Red.	William Allen Richardson—N. Copper, Cl.
Kaiserin Augusta Victoria—H. T. White.	Winnie Davis—H. T. Salmon Pink.
Killarney—H. T. Pink.	Yellow Banksia—Bank Yellow, Cl.
Lamarque—N. White, Cl.	Yellow Cochet—T. Yellow.
Laurette—T. Cream.	
Mme. Abel Chantenay—H. T. Pink.	

## FRUIT DEPARTMENT

The best time to plant deciduous fruit trees is from January to April.

All citrus trees can be planted at any season of the year.

	Each	per 10	per 100
Almond, I.X.L., 5 to 6 ft.....	35		
Apple, best varieties, 3 to 4 ft.....	25	2 00	
Red Astrachan, Gravenstein, Fall Pippin, Red Pearmain Yellow Bellflower, White Winter Pearmain, etc. well branched, large trees, 35c and 50c.....			
Alligator Pear, 6 in. pot.....	1 25	11 00	
5 in. pot.....	1 00	9 00	
4 in. pot, 50c and 75c.....			
Apricot, best varieties, 4 to 6 ft.....	35	3 25	
Blenheim, Hemskirk, Royal, etc.			
Artichoke.....	20	1 50	
Asparagus.....		25	1 50
Blackberry, Kittatinny.....	20	1 50	
Carob, young plant, 2½ in. pot.....	25	2 00	17 00
Casimiroa edulis, potted, 25 to 50c.....			
balled, 2 to 3 ft.....	75		
3 to 4 ft.....	1 00		
4 to 5 ft.....	1 25		
5 to 6 ft.....	1 50		
6 to 8 ft.....	1 75		

## FRUIT DEPARTMENT—Continued

	Each	per 10	per 100
Currants.....	25	2 00	
Dewberry ( <i>Lucretia</i> ).....	10	45	
Fig, ( <i>Adriatic and Black</i> ), 3 to 4 ft.....	30	2 50	
4 to 6 ft.....	40		
Gooseberry, Downing.....	20	1 50	
Grapes, Concord, Worden, Moore's Early, Delaware.....	10	75	
Guava lemon, 4 in. pot.....	35	3 00	
3½ in. pot.....	25	2 00	17 00
2 in. pot.....	10	75	6 50
Strawberry, 6 in. pot.....	45	4 00	
4 in. pot.....	25	2 25	
2 in. pot.....	10	75	6 50
balled.....	40	3 50	30 00
Lemon, Eureka, stem ½ in. diameter and up.....	1 75	16 00	
smaller.....	1 50	14 00	
Lime ( <i>Bear's Seedless</i> ), two year buds.....	1 75		
Loganberry.....	10	50	
Loquat, seedling, balled, 4 to 6 ft.....	1 00		
3 to 4 ft.....	75		
2 to 3 ft.....	60		
improved, budded, 3 to 4 ft.....	1 60		
Advance, Victor, Commercial.....			
Nectarine, Humbolt, Boston, Stanwick, 4 to 6 ft.....	40	3 00	
3 to 4 ft.....	30	2 50	
Olive, Mission and Manzanillo, bare roots, 4 to 6 ft.....	50	4 00	
balled, 4 to 6 ft.....	60	5 00	
Orange, Improved Thompson's, Navel and Valencia, nice plants.....	1 75	16 00	
smaller.....	1 25	11 00	
Peach, Crawford Early, Crawford Late, Elberta, Foster, Lovell, etc., 3 to 4 ft.....	25	2 25	
4 to 6 ft.....	40	3 00	
Pear, Bartlett, Winter Nelis, etc, 3 to 4 ft.....	30	2 50	
4 to 6 ft.....	35	3 00	
Persimmon, American, 5 to 6 ft.....	45	3 50	
4 to 5 ft.....	35	3 00	
3 to 4 ft.....	25	2 25	
2 to 3 ft.....	20	1 75	
japanese ( <i>Hachiya</i> ), 3 to 4 ft.....	35	3 00	
2 to 3 ft.....	25	2 25	
Plum, Satsuma, Burbank, Yellow Egg, 4 to 6 ft.....	35	2 50	
3 to 4 ft.....	25	2 00	
Pomegranate, 14 in. tub.....	1 00		
7 in. pot.....	60		
6 in. pot.....	40		
Pomelo.....			
Prune, French, Hungarian, Silver Sugar, 3 to 4 ft.....	30	2 50	
4 to 6 ft.....	40	3 00	
Quince, Mammoth, 4 to 6 ft.....	40	3 00	
Raspberries.....	10	75	
Rhubarb, Crimson Winter, large plant.....	35	3 00	
small plant.....	10	75	6 00
Strawberries, Brandywine and Excelsior.....		20	1 00
Walnut, Santa Barbara Soft Shells, 3 to 4 ft.....	25	1 75	
4 to 6 ft.....	30	2 50	





