

## **Historic, Archive Document**

Do not assume content reflects current scientific knowledge, policies, or practices.



62.09

LIBRARY  
RECEIVED  
★ JUL 6 1934 ★  
U. S. Department of Agriculture.



ALTA  
CALIFORNIA

CARL SALBACH

*Iris - 1934*

DUTCH IRIS · NARCISSI  
SELECTED SEED SPECIALTIES

657 Woodmont Avenue

Berkeley, California

# Foreword

Our every aim is to give our customers the finest rhizomes of the finest varieties available. Our growing conditions are ideal, and we have grown nearly all of the highly praised iris of recent introduction.

This season we bloomed for the first time nearly thirty well recommended new iris, approximately twenty-five of which we did not see fit to list, even though the varieties would retail at a price averaging between four and five dollars per rhizome. Some of these will, of course, be given another trial, but very few will ever find their way into our catalog. It is because we never pass such disappointments along to our customers we use the slogan "If we list it, it's good."

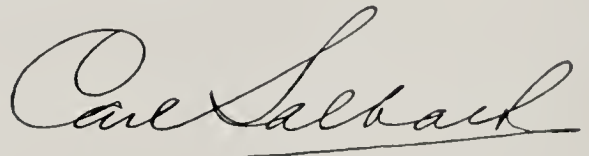
Not only are our varieties the best that are to be had, but our stock is grown under conditions that prepare our rhizomes for the best possible growth anywhere. Our long growing season gives full size and vigor to our rhizomes, and our dry rainless summers assure you fully cured stock that will hold up under the most rigorous climatical conditions.

Typical of the results obtained from our rhizomes is this unsolicited testimonial: "Every iris I bought from you in 1933 is alive and doing just fine—in fact making better growth than those bought in this part of the country."

We receive similar letters almost daily from all parts of the world showing conclusively that California grown iris are hardy everywhere.

We therefore take pleasure in presenting to you our catalog, in which we list the finest rhizomes of the finest varieties.

Sincerely yours,



*Member of*

ALAMEDA COUNTY FLORAL SOCIETY	CALIFORNIA GLADIOLUS SOCIETY
AMERICAN DAHLIA SOCIETY	DAHLIA SOCIETY OF CALIFORNIA
AMERICAN GLADIOLUS SOCIETY	DAHLIA SOCIETY OF SOUTHERN CALIFORNIA
AMERICAN IRIS SOCIETY	EAST BAY GLADIOLUS SOCIETY
BRITISH GLADIOLUS SOCIETY	FELLOW ROYAL HORTICULTURAL SOCIETY
BRITISH IRIS SOCIETY	N. R. A.

## COLOR CLASSES

In risking a classification by color, we have broken away from any recognized grouping in an attempt to make the classes as distinct as possible.

Many iris the colors of which border on two classes, all but defy classification. We have, however, placed each iris in a definite color group, and hope that our customers will find our effort of value in making their selections.

In explanation, we note that all the pinks, blues and reds contains some violet, but recent hybridizing has given the iris a color range that is a far cry from the original types from which they were developed.

Varieties capitalized are those we particularly recommend.

The Classes:

<p><b>WHITES AND CREAMS</b></p> <p>EASTER MORN Gaviota MICHELLINE   CHARRIARE Moonlight NATIVIDAD PURISSIMA SHASTA WAMBLISKA Yellow Moon Yellow Pearl</p> <p><b>WINE OR VIOLET REDS</b></p> <p>CARDINAL DEPUTE NOMBLOT Ibball IRMA POLLOCK LEGEND Lord Lambourne MAGENTA Magnifica Melchior Mme. Cheri MODOC MONTEREY Morning Splendor PADRE SAN LUIS REY Seminole SIKH</p> <p><b>REDS</b></p> <p>Allies DARK KNIGHT DAUNTLESS FIREFALL INDIAN CHIEF KING TUT Numa Roumestan RED WING ROB ROY RONDA RUBEO</p> <p><b>BRONZE AND TAN</b></p> <p>Ambassadeur BRONZE BEACON BRUNO Cherokee Maid Coppersmith Gloaming Glowing Embers GRACE STURTEVANT INDIAN INGENIEUR   WINSSINGER KING MIDAS LE CORREGE MRS. VALERIE WEST NEON TIGER-TIGER VERT-GALANT</p>	<p><b>LILAC TO VIOLET</b></p> <p>Alcazar Allegria Andrew Jackson BRAVURA Dilkush ESPLENDIDO GERMAIN PERTHUIS Geo. J. Tribolet Labor Lady Lilford Louis Bel Nazarine Peerless Pioneer Romola SAN RAFAEL UNCLE REMUS WILLIAM MOHR</p> <p><b>PINK TO ROSE</b></p> <p>Crimson Glow CHINA ROSE Dream Evadne FRIEDA MOHR Georgia Leverrier Mary Gibson MME. CECILE   BOUSCANT Mount Penn Mrs. Marion Cran Phyllis Bliss PINK JEWEL PINK SATIN Rosado Rose Mitchell Roseway ROSY ASIA Rosultra Solferino Susan Bliss Trostringer</p> <p><b>PLICATAS</b></p> <p>ALAMEDA Cydalise Jubilee King Karl LOS ANGELES Mme. Chobaut PINK JADU SACRAMENTO SAN FRANCISCO TRUE DELIGHT</p> <p><b>LAVENDER BLUES</b></p> <p>Aurifero Bellorio HIDALGO Oruga SAN GABRIEL</p>	<p><b>VARIEGATAS</b></p> <p>Argynnis CLAUDE AUREAU Fro Iris King King Juba Loreley MARQUITA</p> <p><b>BLENDS</b></p> <p>Allure ANNA-MARIE CAYEUX Aviator Nungesser ASIA CANDELIGHT DAY DREAM DOLLY MADISON Don Quixote ELEGANTE Endymion FRA ANGELICO GOLD TOP JEAN CAYEUX MIDGARD MME. DURRAND NINGAL Ochracea Querida PRESIDENT   PILKINGTON RAMESES SENORITA SUNOL—See Yellows TALISMAN Valencia Zwannenburg</p> <p><b>YELLOWS</b></p> <p>A Yellow ALTA CALIFORNIA CALIFORNIA GOLD Coronation CRYSORO DESERT GOLD FORTUNA GAYNELLE Gold Imperial HAPPY DAYS HELIOS MIRASOL MOONBEAM PLUIE D'OR Prairie Gold Primrose RAYO DE SOL Soledad SUNBEAM SUNOL Vesper Gold W. R. DYKES</p>	<p><b>LIGHT BLUES</b></p> <p>Alvarado ANN PAGE Autocrat Ballerine Bandollero BLUE BANNER Cantabile Carmelo CLARIDAD Conchobar Conquistador DR. CHOBAUT EL CAPITAN ELEANOR BLUE Hoogiana JACQUELINE   GUILLOT Lady Foster LEONATO Lord of June Lycaena Mabel Taft Majestic MARY BARNETT Miranda NEREUS PACIFIC PEACEMAKER Princess Beatrice REALM Rita SANTA BARBARA SANTA CLARA Santa Fe SENSATION SHINING WATERS SIR MICHAEL SOUV. DE LOETITIA   MICHAUD SUMMER CLOUD Surprise Yolande</p> <p><b>DEEP VELVETY BLUES</b></p> <p>BLACK WINGS BLUE VELVET BRUNHILDE Buto Duke of Bedford J. J. DEAN (Bicolor) Jumbo MELDORIC MME. SEROUGE Moa SAN DIEGO Souv. de Mme. Gaudichau Tenebrae TIOGA Zulu (Bicolor)</p>
---	---	---	---

See General Information, page 4, for description of variegata, blend, and plicata type iris.

## 1934 INTRODUCTIONS

Combining the Mitchell and Salbach introductions for 1934, we have a group that we believe can, without exaggeration, be described as the finest set of new iris offered by any one firm in a single season, possibly excepting the Mohr-Mitchell iris we introduced in 1927.

All seven of our introductions are outstanding and distinct, but four of these creations go much further—so much so, in fact, that we predict that they will set a new standard in each of their respective color classes. These are: **Happy Days**, a pure yellow of El Capitan size and form; **Dark Knight**, a big noble mahogany colored iris; **Brunhilde**, a deep blue violet self; and **Neon**, a glowing near-variegata. The other three were very popular in our garden. **China Rose** and **Rosy Asia** are “pinkish” iris of different types, and **Peacemaker** a fine pale blue blend.

Incidentally, we point with pride to our introductions of last season, for **California Gold**, **Sunol**, **Eleanor Blue**, and **Pink Jewel** have all performed even better than we had anticipated, and have completely justified our faith in them.

The new introductions:

**Brunhilde** (*Salbach 1934*). A tall, dark blue-violet self that establishes a new level of quality for iris of this type. A most regal iris that will be particularly welcome because of its color intensity, and its unusually smooth finish.

Large blooms that are an example of perfect form in an iris of the flaring fall type. Well branched stalks, with a full quota of blooms. Color by Ridgway “dark soft bluish violet,” with unusual blue beard. Splendid under artificial light.

An iris that adds a note of real character to any garden. 40 inches. \$15.00.

**Dark Knight** (*Salbach 1934*). This magnificent mahogany red iris is the richest we have seen in its color class, and is a fine bold grower with large, well formed blooms.

The color impression created by this majestic iris varies with the light—for at times it appears as inky black as Dr. Kirkland’s **Black Wings**, yet from other angles it offers a rich ruby glow, the like of which we have found in no other iris.

A tall, noble flower that is a “standout” in any company. Perfectly formed blooms and the deep rich color carries clear across the garden. Unusually fine substance and finish. Retains its outstanding color qualities under light.

Technical description: Height 45". Bloom 5½" from top to bottom, and falls 2½" across. Color defies Ridgway description, but the closest match is: Falls-violet carmine overlaid velvety-black. Standards, translucent blackish red-purple. (Note—Despite the Ridgway color-term, the flower carries no suggestion of the color commonly called “purple”.) \$15.00.

**Happy Days** (*Mitchell 1934*). A real triumph in yellow breeding which bids fair, in time, to become the most popular iris in the United States. An immense clear yellow, most easily described as a yellow El Capitan, although in established plantings the blooms will be slightly larger than those of the latter.

Perfectly branched, with each stalk carrying seven or eight massive blooms. Color, clear pinard yellow, with the falls being a shade deeper than the standards, and the beard an attractive orange yellow. Unusual glistening finish.

Although deriving its size from its Dykes parentage, the use of a clear yellow seedling as the other parent has eliminated any tendency towards flecking and fading.

Blooms measure 7¼" from top to bottom, and 3¼" across the falls. Height 40". Flowers through the season.

We venture to predict that **Happy Days** will remain sensationally outstanding as long as has the remarkable **Frieda Mohr**. Due to the unusually heavy sale at blooming time, we advise ordering early, as we anticipate a complete sell-out early in the season. \$25.00.

**China Rose** (*Salbach 1934*). A “little **Frieda Mohr**” except that it is warmer in color and has a most delicate antique appearance. Standards Chinese violet, falls bright magenta with bronze undertone at the haft. (Colors from Ridgway.)

A seedling from **Frieda Mohr** x **Roseway**, and, we believe, a likely prospect for use in breeding for pinks. Height 2½ feet, blooms of medium size, hence the introductory price of \$3.00.

**Neon** (*Salbach 1934*). One of the brightest iris in the garden, hence the name. When this iris came into full bloom it was the most popular iris in our trial bed, although blooming in competition with a large number of the finest new American and foreign varieties.

Due to the bronzy gold of the standards and the velvety carmine of the falls, Neon offers a glowing richness that we know of in no other iris of this type. The bright gold of the beard and on the haft blend into the bronzy-gold of the standards to give the flower its attractive brilliance.

Disregarding size, form, or habit, and making a direct comparison to Fro and Iris King for color only, we find that Neon is so much richer that it makes the color tones of both variegatas appear pale and wan.

A perfect example of good candelabrum type stalk, 48 in., carrying a full quota of blooms and buds. Has been tested and found hardy under severe wintering. See color picture page 7 .....\$15.00



**Peacemaker** (*Mitchell 1934*). A stylish porcelain colored iris with a pale lavender blue flush in center of falls. Very refined, having the clear appearance of a piece of newly lacquered furniture. Excellent as an aid in garden blending, because its pale shades make it a colorful substitute for white. Tall, well branched, with large blossoms. Blooms in mid-season. 42 inches.....\$3.00

**Rosy Asia** (*Mitchell 1934*). A pinker edition of Asia, with broader falls and fine full form. A most delicate and delightful blend which is at its best under electric light. Large blooms.

Falls pale Chinese violet, flushed deeper in center, with warm lilac standards and bright yellow beard. An iris which should be of great interest to breeders, as Mr. Mitchell has himself been using it in his breeding for pinks. \$3.00.

### GROUP COLLECTION

**Note**—Due to the unusual demand for **Happy Days**, we cannot include it in our group collection. We offer, however, one rhizome each of **Brunhilde**, **China Rose**, **Dark Knight**, **Neon**, **Peacemaker** and **Rosy Asia** for \$45.00.

## GENERAL INFORMATION

For those who wish more information than is possible to give in a catalog we recommend membership in the American Iris Society. We invite all iris growers to join the national society. The quarterly bulletins are full of valuable criticisms, descriptions, growing suggestions, etc. The price is \$3.00. Checks and applications should be made to the American Iris Society and mailed to B. Y. Morrison, 116 Chestnut St., Takoma Park, D. C., or if more convenient, may be sent to us for forwarding.

For instructions as to how to order see inside back cover.

The iris described on the following pages are mostly bearded iris. The range of color is unbelievably large, even though all the blues, pinks and reds contain some violet. The yellows range from palest primrose to rich gold.

A bicolor is an iris that has standards of one shade and falls of another, usually considerably darker. A blend, as the name indicates, is a suffusion of several colors. A plicata is a light colored iris, the edges of which are flushed, lined or dotted with color. A self carries the same shade throughout the whole flower. A variegata has yellow standards and reddish brown falls.

The name of the originator and the year of introduction follow, in parenthesis, the name of the iris. The standards (abbreviated S.) are the three upstanding petals, the falls (abbreviated F.) are the three lower petals.

The following abbreviations used in noting awards refer to different societies. A. I. S., American Iris Society; B. I. S., British Iris Society; M. H. S., Massachusetts Horticultural Society; R. H. S., Royal Horticultural Society, England; S. N. H. F., Societe Nationale d'Horticulture de France.

The prices in this catalog cancel all previous quotations.

**Cultural Directions included with every order.**

To all amateur gardeners on the Pacific Coast we recommend "Gardening in California," by Sydney B. Mitchell. This book, called by its many readers their Garden Bible, is the most comprehensive, practical and readable one in its field. Its author is not only known as an iris breeder, but as the creator of the beautiful garden adjoining us, where he puts into practice the advice he gives. We can supply autographed copies of this book at \$2.65 postpaid.



## COMPLETE LIST OF NEW AND STANDARD VARIETIES

THE prices unless otherwise designated are for single roots. The group price as with Alameda, 3 for \$1.00, is applicable only to three Alameda, not to three different varieties at the same price. It is much quicker and easier to ship three roots of one variety than one root of three different varieties that may have to be dug in three different gardens.

See Pages 3 and 21 for Special Collections

- Alameda** (*Mohr-Mitchell*). A large plicata with both standards and falls heavily suffused blue violet on white. A profuse bloomer. . . . .50c; 3 for \$1.00
- Alcazar**. Dark violet with lighter standards. Vigorous. . . . .25c; 3 for 50c
- Allies** (*Vilmorin*). A low growing brownish red with bright golden beard. A fine iris. Free blooming. Often flowers again in the fall. Early. Cert. Merit, S. N. H. F. . . . .35c; 3 for 70c
- Allure** (*Murrell*). A beautiful blend of canary yellow flushed and overlaid violet pink. Holds its delicate color best in part shade. . . . .35c; 3 for 70c
- Allegría** (*Denis*). A splendid new dry-footer that is entirely hardy, and one of the very first iris to bloom. Color lilac, with beautiful veinings. . . . . \$1.00; 3 for \$2.50
- Alta California** (*Mitchell 1931*). This fine iris which we introduced three seasons ago has completely justified all of our lavish predictions. It still remains supreme as the most worthwhile tall yellow iris, excepting Happy Days, which is of completely different form and color. Alta California forms one of the most compelling of all the plantings in our garden. See illustration on front cover.  
Totally distinct from even the newest yellows. Clear yellow, faintly bronzed, with stems superbly branched. Blooms of good size, and texture so firm that neither rain nor sun mar the stately blossoms. 48" . \$5.00
- Alvarado**. Blue. . . . .20c; 3 for 35c
- Ambassador**. Bronze. Medium tall. Widely branched. Late blooming. . . . .25c; 3 for 50c
- Andrew Jackson** (*Kirkland*). A flower of large size, heavy substance, and perfect form. The color effect is red-violet. Plant vigorous and hardy. Early blooming. . . . .75c; 3 for \$1.75
- Anna-Marie Cayeux** (*Cayeux 1928*). A remarkable iris of fine form and fine finish, flowers large, and of unusually heavy substance. A most delicate blending of colors described as pigeon-throat violet. Color from Ridgway-Chinese violet. A truly outstanding new iris. . . . . \$2.50
- Ann Page**. A lovely pale lavender blue self of fine form, good substance and delicious perfume. Well branched. 36" . . . . .25c; 3 for 50c
- Argynnis** (*Williamson*). Clear bright yellow with falls of chestnut red, with narrow yellow edge. . . . .25c; 3 for 50c
- Asia** (*Yeld*). A beautiful silvery lavender blend, lit by a bright yellow beard. An iris of great elegance and deserved popularity. Blooms mid-season to late. . . . .25c; 3 for 50c
- Aurea**. Beardless. A tall deep yellow of the spuria type, often referred to as the butterfly iris. Begins blooming towards the latter part of the bearded iris season. Makes an excellent cut flower. Foliage long and sword like. The plants like much more water during the blooming season than do the bearded. Fall is the proper time for separating this iris, and they should be planted as soon as received. . . . .60c; 3 for \$1.20
- Aurifero** (*Mohr-Mitchell*). The standards are tall and of pale lavender, the broad rosy lavender falls are of fine finish. A brilliant gold beard gives a warm glow to the center. Large flowers. Rampant growth. 42" . . . . .25c; 3 for 50c
- Autocrat**. Blue bicolor. . . . .20c; 3 for 35c
- Aviator Nungesser** (*Denis*). A popular iris having standards of very light frosty bronze and falls Van Dyke red. . . . . \$1.00
- A. Yellow**. . . . .20c; 3 for 35c
- Ballerine** (*Vilmorin*). Enormous blooms with broad light blue violet standards, waved at the margins. Falls broad and deeper in color. Very fragrant. . . . .25c; 3 for 50c
- Bandollo**. Light blue. . . . .20c; 3 for 35c
- Bellorio** (*Mohr*). A slender graceful flower of grayed lavender. Very early and suitable for rock gardens. . . . .25c; 3 for 50c
- Black Wings** (*Kirkland 1931*). First introduced as Satan, prince of darkness, the "almost blackness" of the flower warranted the name, but finally re-named "Black Wings." Good size and form, with flaring falls 4½" by equal height. Color almost black, owing to the black veining on Fluorite violet. Hardy, and does not fade. One of the standouts in our garden—an iris which we can give full commendation. 30" . . . . . \$5.00
- Blue Banner** (*Kirkland 1929*). The general tone of this iris is a beautiful clear light blue with violet falls edged light blue. . . . . \$1.00; 3 for \$2.50
- Blue Velvet** (*Loomis*). A rich clear deep velvety blue self of splendid substance and unusual beauty. The plants are vigorous, and the growth is tall. This fine iris has received unstinted praise. . . . . \$2.00
- Bravura** (*Mohr*). Large well placed flowers of deep rosy lilac, well branched stems. Substance excellent and plant vigorous. 40" . . . . .25c; 3 for 50c



*Frieda Mohr*

**Bronze Beacon** (*Salbach 1932*). This fine new coppery bronze carries a myriad of lustrous blossoms on each of its low branching flower stalks. Splendid texture, withstanding both heat and rain. Falls velvety Indian lake, with glowing golden bronze standards give this tall iris its beacon-like attributes. Blooms extremely late, and its long blooming period extends the season at least two weeks. Fine seed bearer. 50".....\$2.50

**BRUNHILDE** (*Salbach 1934*). Sets a new standard for iris in the deep blue violet class. See "New Introductions," pages 2 and 3.

**Bruno** (*Bliss*). A Dominion bronze of rich velvety coloring. Fine form, and fragrant. One

of the best late blooming iris. Does particularly well in California. 33".....  
.....60c; 3 for \$1.20

**Buto** (*Hans Sass*). A very large flower of deep coloring. Royal purple to velvety blackish violet. Fine in mass. Early.....  
.....25c; 3 for 50c

**Cacique** (*Berry*). A handsome fulva hybrid. Prune-purple to blackish-purple, with bright golden arrows on the falls. Likes moisture and humus in the soil. Reported hardy in the East. .60c; 3 for \$1.20

**California Gold** (*Mohr-Mitchell 1933*). Nicknamed "Brazen Hussy," this remarkable deep yellow is even a shade deeper than Crysoro and with a larger bloom and stalk. Actually the deepest yellow imaginable, being wax to strontian yellow, according to Ridgway color charts. Does not fade, and shows no paling in standards, falls, or beard. Late blooming.

Best described as a larger yellow edition of its parent, Grace Sturtevant, with closed standards and broad falls. Undoubtedly the finest brass yellow. A complete sell-out last season. Reported hardy under severe wintering.....  
.....\$20.00

**Candlelight** (*Andrews*). Large flowers of pale pinkish lavender, illuminated by a rich golden glow.....50c; 3 for \$1.00

**Cantabile** (*Williamson*). A bright and delightful little iris. Standards white with palest flush of blue. Falls violet blue, edged lighter blue. Showy yellow beard.....  
.....50c; 3 for \$1.00

**Cardinal** (*Bliss*). One of the richest flowers of the Dominion race. A rich, velvety crimson purple of wonderful glossy texture. Stalks low and widely branched....60c; 3 for \$1.20

**Carmelo** (*Mohr*). This iris is half regelia in parentage. Its growth, slender foliage, and stems, and long narrow flowers put it in a new class. Award of Merit, R. H. S. Suitable for rock gardens.....25c; 3 for 50c

**Cherokee Maid** (*Williamson*). Blackish maroon, half oncocyclus. Unusual.....  
.....50c; 3 for \$1.00

**China Rose** (*Salbach 1934*).

A "little Frieda Mohr" except that it is warmer in color and has a most delicate antique appearance. Standards Chinese violet, falls bright magenta with bronze undertone at the haft. (Colors from Ridgeway.)

A seedling from Frieda Mohr x Roseway, and, we believe, a likely prospect for use in breeding for pinks. Height 2½ feet, blooms of medium size, hence the introductory price of \$3.00.

**Clara Noyes** (*Sass*). A "different" low growing iris. Standards tan, flushed heliotrope. Falls reddish bronze, lined deeper bronze. Yellow beard and haft undertone of the same color .....\$2.50

**Claridad** (*Mohr*). A beautiful clear lavender blue of great purity. Horizontal falls, good substance, and pleasing garden effect. Early flowering. Medium height.....25c; 3 for 50c

**Claude Aureau** (*Cayeux 1928*). A splendid iris of robust constitution, imposing habit and great size of blooms. The standards are golden yellow, the long wide falls are russet brown with a large margin of bronzy gold. 3 feet. Cert. of Merit, S. N. H. F. ....\$3.00

**Conchobar**. Tall blue bicolor.....20c; 3 for 35c

**Conquistador** (*Mohr*). One of the very tallest iris.

Fine foliage, and splendid light violet blue flowers. Vigorous. Fragrant..25c; 3 for 50c

**Coppersmith** (*Shull*). Flowers having a glorious copper-bronze sheen. Heavy substance, smooth finish, and fine form. Floriferous. Fragrant. 30".....50c; 3 for \$1.00

**Coronation** (*Moore*). Another fine yellow. A uniformly deep yellow that does not fade...\$1.00

**Crimson Glow** (*Millet*). Uniform shade of brilliant crimson rose. Free flowering. 32".....25c; 3 for 50c

**Cryoro** (*Nicholls*). Easily the deepest of the early blooming iris, being bright brassy gold. A low growing variety that makes a splendid show in mass. Not in conflict with California Gold, which is a late bloomer.....\$2.50



**Cydalise** (*Cayeux 1930*). The first noteworthy yellow ground plicata. Noticeable for large sized flowers, well poised on the firm, branching stem. Delicately veined. Floriferous. Late bloomer. 3 feet.....\$1.00

**DARK KNIGHT** (*Salbach 1934*). A big, bold, glowing maroon that is a "standout" in any company. See "New Introductions," pages 2 and 3.

**Dauntless** (*Connell*). One of the very reddest of iris, producing a most effective clump in the garden. Color a velvety rose red. Very luminous and still one of the best in its color class. Awarded Dykes Medal, 1929.....\$1.50

- Day Dream** (*Sturtevant*). One of the most beautifully colored of all blends. Standards of pale iridescent lilac, faintly suffused bronze yellow. Beard and reticulations of yellow, and falls of lilac pink. . . . . \$1.00
- Depute Nomblot** (*Cayoux 1929*). This magnificent iris is acclaimed by experts from America, France, and England as Cayeux' outstanding achievement. It is an imposing giant of greatest vigor, strong foliage, with a stout firm spike over four feet. Well branched. Blooms enormous, with wide spreading falls. Color light glowing rosy-purple overlaid a bronzy gold. Deep orange beard. Cert. of Merit, S. N. H. F. and W. R. Dykes Medal for the finest new iris, 1930. . . . . \$2.00
- Desert Gold** (*Kirkland 1930*). A fine yellow with perfect form, and most pleasing luminous coloring. A light yellow deepening towards the center of the flower. Most pleasing and effective in the garden. Good size, well branched, and of unusual substance. Largest and tallest of the early yellows. 30". . . . . \$2.00
- Dilkush**. A hybrid of Iberica X Pallida. Fine rounded flowers, with standards heavily veined. Color deep reddish purple. . . . . 35c; 3 for 70c
- Dolly Madison** (*Williamson*). Pale pinkish mauve standards, with broad flaring falls of lilac. Haft tinted gold, and with an intense orange beard. A most outstanding blend of colors. Growth vigorous. Hon. Ment., A. I. S. . . . . 50c; 3 for \$1.00
- Don Quixote** (*Mohr-Mitchell*). A very large flower of somewhat subdued Quaker Lady coloring—lavender blended yellow, with orange beard. Strong and rapid grower. . . . . 35c; 3 for 70c
- Dr. Chobaut** (*Denis*). A beautiful clear porcelain blue of fine finish. A flower of real poise with flaring falls and fine branching habit . . . . . \$1.50
- Dream**. A lovely crinkled orchid pink with orange beard. Late. . . . . 25c; 3 for 50c
- Duke of Bedford** (*Bliss*). A very fine iris of deep rich violet purple. Velvety and brilliant. Tall, with exceptionally branched stalks. Orange beard. Vigorous. . . . . 35c; 3 for 70c
- Easter Morn** (*Essig*). A new white that has been enthusiastically received throughout the country. Flowers of pure warm white with yellow center. Well branched stalks growing from four to five feet tall. Santa Barbara form. The largest of the whites, and absolutely distinct. . . . \$5.00; 3 for \$12.50
- El Capitan** (*Mohr*). Majestic flowers of huge size on a candelabra type stalk, each of which carries a large number of blooms. Color a light violet blue. No garden should be without this most outstanding iris. . . . . 60c; 3 for \$1.50
- Eleanor Blue** (*Salbach 1933*). Fills a long felt want for an outstanding blue iris of medium height. Possesses the same delicate coloring and smooth finish of Hoogiana, but of good size and Santa Barbara form. The general coloring, plus the brown haft undertone, make this one of the warmest and best "wearing" blues.  
Coloring—Soft campanula blue with a flush of deeper chicory blue in the center of the falls. Soft brown haft and prominent yellow beard. A distinct iris of real refinement . . . . . \$5.00
- Elegante** (*Mohr-Mitchell 1931*). As indicated by the name this is an iris of poise, elegance, and graceful growth. Plants 34 in. tall and well branched, making a nice garden clump, and furnishing excellent blooms for cutting. A blend of silvery-lavender flushed yellow at the edges. Early blooming. 75c; 3 for \$1.75
- Emperor**. Siberica. The same type as Perry's Blue. Colored a deeper blue that almost runs into purple shadings. . . . 60c; 3 for \$1.50
- Endymion** (*Sturtevant*). A lovely warm buff blend with orange beard. . . . . 25c; 3 for 50c
- Esplendido** (*Mohr*). A fine big red purple bicolor with such beautifully branched stem that its garden effect is striking. Hardy everywhere. One of the parents of San Francisco. 40". . . . . 25c; 3 for 50c
- Euphony** (*Sass*). Bronzy yellow standards with rosy bronze blending in falls. Very free blooming. . . . . 60c; 3 for \$1.50
- Evadne** (*Bliss*). A distinct rose red self with orange beard. . . . . 25c; 3 for 50c
- Firefall** (*Essig*). Bright bordeaux red with Cadmium beard. A fine, showy iris. . . . . 50c; 3 for \$1.00
- Fra Angelico** (*Vilmorin*). A splendid blend of hazel and honey yellow with a pale overlay of suffused lavender. One of the finest for garden effect, still ranking as one of the best blends notwithstanding the furore being made over some of the newer ones. 22". . . . . 35c; 3 for 70c
- Frieda Mohr** (*Mohr 1926*). The beauty of form and color is shown in the color picture. The flowers measure 6½ inches from the top of the standards to the tip of the falls and 6 inches horizontally. The plants average 50 inches in height with the clean straight foliage in proportion, making it equally satisfactory as a specimen plant or for massing. Blooming time from midseason till very late. The flower substance is heavy, the branching rather high but well spaced, the growth vigorous and the increase very rapid. The luminosity of the flowers makes this variety especially desirable for landscape planting. Locust perfume. Should be in every garden. . 60c; 3 for \$1.50; 6 for \$2.75

- Fortuna** (*Mohr-Mitchell*). A broad rounded flower of Alcazar and Esplendido shape. Clear amber yellow standards with somewhat lighter yellow falls reticulated red brown. An outstanding and most popular flower.....50c; 3 for \$1.00
- Fro.** Standards mustard yellow, falls ox-blood red. Vigorous and floriferous. Excellent in borders.....25c; 3 for 50c
- Gaviota** (*Mohr*). Creamy white. Excellent for massing.....25c; 3 for 50c
- Gaynelle** (*Richer*). This splendid intermediate is most outstanding, due particularly to the fact that it is the very earliest of the yellows, blooming even earlier than Soledad, which it clearly supplants. Deeper in color, larger, and of better form than the latter. Makes a solid mass of color at blooming time.....75c; 3 for \$1.75
- George J. Tribolet** (*Williamson*). A very rich iris in the darker tones. Black violet to purple. Fragrant. Silver Medal, A. I. S.....35c; 3 for 70c
- Georgia** (*Farr*). Soft Cattleya rose, excellent substance. Early. Beautiful "pink" in mass. 30". Early. Sometimes blooms in fall.....25c; 3 for 50c
- Germain Perthuis** (*Millet*). An enormous rich violet purple self with striking orange beard. Tall, well branched, free flowering with wonderfully smooth velvety appearance. Sweet scented. 36".....50c; 3 for \$1.00
- Gloaming** (*Murrell*). An early intermediate which makes one of the finest low growing border iris we know. Most floriferous, and forms a bright russet mass of color—almost solid after clumps are established. Because it increases so rapidly, a dozen rhizomes will give complete border effect by the second season.....35c; 3 for 70c; 12 for \$2.00
- Glowing Embers** (*Sturtevant*). A highly colored flower with light brownish standards and falls of bright russet red. Excellent for breeders, being one of the parents of both Gold Top and Bronze Beacon, and also in the parentage of Dark Knight.25c; 3 for 50c
- Gold Top** (*Salbach 1931*). Rich old gold standards set off by falls that are red violet edged old gold. The style arms and beard afford another touch of gold. Blooms early and continues all through the season. Tall and well balanced. A consistent fall bloomer in California. 42".....\$1.00; 3 for \$2.50
- Gold Imperial** (*Sturtevant*). Chrome yellow throughout except for the orange beard. Rare finish, texture, and form. Hon. Ment. A. I. S.....35c; 3 for 70c
- Grace Sturtevant** (*Bliss*). Standards dark red brown with rich velvety falls that are still darker, being almost black at the tip. A deep orange beard that makes this flower one of the most conspicuous in the garden. Most outstanding. and very valuable to breeders, being one of the parents of California Gold.....\$1.00; 3 for \$2.50



San Francisco—"One Stalk a Bouquet." This magnificent iris presents a perfect example of the candelabrum branching type of stem which characterizes many of the newer iris.

**HAPPY DAYS** (*Mitchell 1934*). A breath taking new yellow iris that is both huge and clear. See picture page 7 and "New Introductions," pages 2 and 3.

**Helios** (*Cayeux*). One of the really fine yellows. A big, luminous pale yellow, almost as large as W. R. Dykes, but a bit paler in color. Fine form and finish, with delicate light brown lining on the falls which, however, are so faint as to be almost invisible when the flower is open. A most vigorous grower, free blooming. 3 feet. Cert. of Merit, and Special Prize as one of the three best iris of 1929, S. N. H. F.....\$2.00

- Hidalgo** (*Mohr*). A very large lavender blue of unusually broad shape. The stalks carry so many blooms open at one time that it is comparable to a spike of gladiolus. Particularly fine for floral decorations, as under electric light it becomes pink as Frieda Mohr. Midseason to late. 48".....35c; 3 for 70c
- Hoogiana**. Regelia. Soft uniform blue of perfect finish.....50c; 3 for \$1.00
- Ibball**. As the name indicates, this beautiful hybrid is derived from Iberica and Pallida and the rounded shape and veining of the deep red violet flowers show the oncocyclis parent.....35c; 3 for 70c
- Indian Chief** (*Ayres*). One of the best medium tall reds. Bronzy violet standards, with falls of dahlia carmine. Excellent indoors as it shows up unusually well under electric light. A good doer everywhere, which should be in every garden.....\$1.00; 3 for \$2.50
- Indian** (*Sass*). A most remarkable iris. Tan, slightly flushed rose. Ruffled. 60c; 3 for \$1.50
- Ingenieur Winssinger** (*Denis*). A beautiful russet brown bearing some resemblance to El Tovar, and also to Le Corregge. Rich in color and of fine finish. Both standards and falls carry out the velvety brown tones of the iris, with the falls being slightly the darkest .....\$7.50
- Iris King**. Golden yellow, with velvety garnet falls. Frequently blooms in fall in California.....25c; 3 for 50c
- Irma Pollock** (*Sass 1931*). A velvety carmine with lighter margin. Heavy substance and fine flaring form. Fine garden effect. 30". .....\$2.00
- Jacqueline Guillot** (*Cayeux*). Well formed blooms of pure lavender blue with lustrous surface. Stalks stout and well branched. Fragrant and a mass of blooms. One of the best regardless of the low price. 25c; 3 for 50c
- Jean Cayeux** (*Cayeux*). Beautiful blending of havana or coffee brown, with golden glint. Considered one of the very finest iris ever imported from France.....\$18.00
- J. J. Dean** (*Dean*). Standards light violet, with falls deeper velvety blue purple. Large and tall.....25c; 3 for 50c
- Jubilee** (*Sass*). Buff, heavily spotted dark copper. Low growing.....25c; 3 for 50c
- Jumbo** (*Sass*). Broad standards of blue violet, with falls shading to redder violet. Orange beard. Free blooming and sturdy of growth. ....25c; 3 for 50c
- King Juba** (*Sass*). Big and bold, with yellow standards and falls of Indian lake. Medium tall, a rapid increaser, and free flowering.. .....\$3.00
- King Midas** (*Mead 1929*). One of the brightest of the bronze toned iris. Standards golden buff and falls iridescent garnet brown. Lit by golden orange beard and golden haft, from whence the name was chosen. A heavy flower of fine finish and substance. One of the parents of Sunol, the fine new Mohr-Mitchell yellow blend.....\$3.00
- King Karl** (*Sass*). A beautiful frilled plicata. Standards light pinkish cinnamon, and falls a suffusion of cream and purple. Fragrant. Low growing.....50c; 3 for \$1.00
- King Tut** (*Sass*). One of the very brightest of the "red" iris on the market, producing this effect by its golden standards and beard, and its bright Hessian brown falls. Valuable to breeders due to its bright coloring.....60c; 3 for \$1.50
- Labor** (*Cayeux*). A distinct and brilliant violet heliotrope self. A striking color when massed.....50c; 3 for \$1.00
- Lady Foster**. Beautiful lavender blue. Free flowering and fragrant.....25c; 3 for 50c
- Lady Lilford** (*Foster*). Very large distinct flower of lavender purple. Heavily veined. Needs no special culture in California. Part oncocyclis. 30".....35c; 3 for 70c
- Le Corregge** (*Vilmorin*). Very broad and rounded flower with smoky bronze standards set on dark reddish plum falls. Conspicuous yellow beard. Well branched, and fragrant. 36".....75c; 3 for \$1.75
- Legend** (*Wareham 1932*). A Wareham seedling that is wholly distinct, and in our opinion the finest of the five iris sold from this collection in 1932. Very rich velvety coloring of crimson claret with standards beautifully veined violet-blue. Beard a striking gold which sets off the darkness of the flower as effectively as do the beards of Grace Sturtevant and Sir Michael.....\$2.00
- Leonato** (*Newlands*). A greatly improved Lady Foster, larger, taller, lighter in color, but shapely and well proportioned. Pale lavender to silvery heliotrope. Early flowering. Very fragrant. 48".....25c; 3 for 50c
- Leverrier**. A large early light rose red. Stalks well and widely branched. Fragrant. 48"....25c; 3 for 50c
- Loetitia Michaud**. See Souv. De Loetitia Michaud.
- Lord Lambourne** (*Perry*). A rose bronze bicolor. Early blooming, and gives a profusion of flowers. Tall.....35c; 3 for 70c
- Lord of June** (*Yeld*). Large lavender blue standards with falls slightly deeper.....25c; 3 for 50c
- Lord Wolseley**. Beardless. A fine blue of the spuria type. Blooms on very tall, wiry stems. See Aurea for description. Spuria type iris. For fall planting.....60c; 3 for \$1.50
- Loreley**. Yellow with heavy splashings of raisin purple on falls. Free blooming and fragrant.....25c; 3 for 50c
- Los Angeles** (*Mohr-Mitchell*). Great white flowers of fine shape and substance, the standards faintly edged blue with the blue style arms adding a note of clear blue in the center. Tall and widely branched. Most outstanding, being three times the size of the earlier plicatas. Hardy everywhere....75c; 3 for \$2.00



RUBEO

*See our gladiolus exhibit at the California Flower Festival, Oakland, Calif., Sept. 15-19*

- Louis Bel** (*Denis*). Very dark pansy violet, showing red violet against the sun. 30"....  
.....50c; 3 for \$1.00
- Lycaena** (*Williamson*). White standards with rich purple falls with paler margin. 27"....  
.....25c; 3 for 50c
- Mabel Taft** (*Wareham*). Blue bicolor. Big and bold :.....\$1.00
- Magenta** (*Cayeux*). This is a fine red violet self of satiny texture. Excellent substance, late. Cert. of Merit, S. N. H. F.....  
.....60c; 3 for \$1.50
- Magnifica** (*Vilmorin*). Huge flowers of light violet blue standards and red violet falls. Fine grower, splendid in mass, and most popular. Early. 40".25c; 3 for 50c; 12 for \$1.50
- Majestic** (*Bliss*). A large flower of heavy substance. Standards light blue, falls deep blue-purple. Low branching.....25c; 3 for 50c
- Marquita** (*Cayeux 1930*). A huge variegata which has proven to be one of the most outstanding iris ever produced in France. Simply huge flowers of creamy yellow with falls heavily lined rose pink which becomes almost a suffusion at the end of the petals. This remarkable iris should eventually find its way into the gardens of all iris lovers. 42" ..... \$7.50
- Mary Barnett** (*Cumbler*). A lovely light lavender blue self with a prominent golden beard. Free flowering and fragrant.....  
.....60c; 3 for \$1.50
- Mary Geddes** (*Washington*). A lighter, taller King Midas that has received high commendation in the East. Standards light bronze with just a suggestion of flesh pink. Falls coral rose with yellow haft, lined bronze...  
.....\$6.00
- Mary Gibson** (*Perry*). Tall light bronzy rose. Makes fine color note when planted in mass. Award of Merit, R.H.S.....  
.....35c; 3 for 70c; 12 for \$2.00
- Melchoir** (*Wallace*). A beautiful red-bronzy claret self with orange beard. Ruffled velvet falls. Well branched. 36"....75c; 3 for \$2.00
- Meldoric** (*Ayres 1931*). Probably Dr. Ayres' most outstanding production. Certainly one of his best. The flowers are blue-black in effect, and very large. Gold beard....\$2.50
- Micheline Charriare** (*Denis*). A large tall pure white with golden reticulations.....  
.....50c; 3 for \$1.00
- Midgard** (*H. P. Sass*). Soft pale blend of yellow and pink similar to Allure. Beautiful cut for table bouquets.....60c; 3 for \$1.50
- Miranda**. Blue.....20c; 3 for 35c
- Mirasol** (*Mohr-Mitchell 1929*). Pure chrome yellow unmarred by veining and of fine form and finish. The broad petalled, well balanced flowers are nicely placed on the low branched stems. Remains long in flower because of its many buds....75c; 3 for \$1.75
- Mme. Cecille Bouscant**. A clear self tone of light orchid pink that is absolutely unique. An exquisitely lovely iris....50c; 3 for \$1.00
- Mme. Cheri**. Red violet tinted with pink and warmed by a yellow undertone, a beautiful color. 42".....25c; 3 for 50c
- Mme. Chobaut** (*Denis*). A lovely plicata, its yellow ground flushed red and veined brown.....25c; 3 for 50c
- Mme. Durrand** (*Denis*). An iridescent buff, flushed lilac and amber. Many large flowers on tall, well branched stems. 48".....  
.....50c; 3 for \$1.00
- Mme. Serouge** (*Cayeux 1929*). A very beautiful free flowering iris of great size and vigorous growth. A clear deep violet blue self. Cert. of Merit and Special Prize, S.N.H.F., for one of the three best iris of 1929. 42"...  
.....\$2.00
- Moa** (*Bliss*). Arching standards of pure violet and broad almost circular flat falls of deep velvety violet purple. Very free flowering. Excellent substance. 39"....35c; 3 for 70c
- Modoc** (*Essig*). A very outstanding iris, being one of the richest colored iris in the garden. Constantly attracts attention and praise. A dark velvety blackish red purple that stands out because of the live, bright tone of coloring. Heavy yellow beard..\$2.00; 3 for \$5.00
- Monnieri**. Beardless. Spuria type. Very tall with long slender leaves. Flowers large, and of deep golden yellow. A fine variety for cutting. Should be planted in late fall. Early deliveries made only at customer's risk.
- The requirements of this group are almost opposite from those of the bearded irises, in that they do best in moist soils. They can, however, stand a summer rest and drying out. The spurias bloom after the bearded irises.....50c; 3 for \$1.00
- Monterey** (*Mohr-Mitchell 1929*). An exceptionally fine dark bronzed red violet. Good size, form, and substance. 45".....  
.....50c; 3 for \$1.00
- Moonbeam** (*Murrell*). An outstanding intermediate yellow iris that makes a splendid mass of color. It is a pure sulphur yellow self with no markings. A robust grower with stout stems, is very free flowering. Deliciously scented. 20".....50c; 3 for \$1.00
- Moonlight** (*Dykes*). Creamy amber with heavy greenish gold reticulations. Broad lemon yellow beard. Scented. Fine for massing. 30".....50c; 3 for \$1.00
- Morning Splendor** (*Shull*). Deep rich large red violet. Fragrant. 36"....35c; 3 for 70c
- Mount Penn**. Deep rose pink. Golden beard. 30".....20c; 3 for 35c
- Mrs. Marion Cran** (*Perry*). A brilliant light rose iris of perfect shape and tall strong stems.....25c; 3 for 50c
- Mrs. Valerie West** (*Bliss*). Considered Mr. Bliss' crowning achievement. A much admired iris. Broad massive bronze standards with falls of deep velvety maroon purple. Stems well branched, and free blooming. One of the best in its class..75c; 3 for \$2.00



**Natividad** (*Mohr-Mitchell*). This beautiful warm creamy white iris is one of Sydney B. Mitchell's favorites, and rightfully so, as it forms the most graceful clump imaginable.

Standards and falls creamy white, with center lighted clear soft yellow which is concentrated at the base of the standards and falls, and in the yellow beard.

Unusual substance and texture. This iris has all the poise and distinction of a bit of old ivory. 40".....\$5.00

**Nazarine**. Purple violet bi-color. .20c; 3 for 35c

**NEON** (*Salbach 1934*). This glowingly bright iris of perfect form is pictured in color on page 7 and described in "New Introductions," pages 2 and 3.

**Nereus**. Light blue bi-color. Good size, and fine in mass.....25c; 3 for 50c

**Ningal** (*Ayres 1932*). A beautiful blend of warm, glistening buff set off by beard and reticulations of gold. Standards flushed a very faint pearly blue. Tall, well formed on nicely branched stem. 44".....\$5.00

**Numa Roumestan** (*Cayeux*). A very warm rich coppery red iris with orange beard. Strong erect growing plant with flowers of good substance. Late flowering. Fragrant. 36".....\$1.00; 3 for \$2.50

**Ochracea** (listed also as *Sunset*) (*Denis*). The standards are like cloth of gold, the falls the same but suffused blue violet. A strong grower, free flowering, very late and scented.....25c; 3 for 50c

**Ochroleuca**. Beardless. Spuria type. A tall variety with long slender foliage. The blooms are creamy white with golden yellow center. Should be planted in the fall. Early deliveries will be made only at the customer's risk. For cultural directions, see Monnier. ....25c; 3 for 50c

**Oruga** (*Mohr-Mitchell 1930*). Flowers are large and abundant. Stems low and widely branched. Pale lavender, lighter at edges of falls. Well domed. The prominent fuzzy beard suggested the name Oruga, which is Spanish for caterpillar. 44"....25c; 3 for 50c

**Pacific** (*Essig 1929*). This fine big iris combines all the qualities of clear clean color, substance, carriage, vigor and garden effect. It blooms very early and continues for a long time. The color is light bluish violet. Falls flaring, stems straight and slender. ....75c; 3 for \$2.00

**Padre** (*Mohr-Mitchell 1930*). This dignified iris is tall, well branched, vigorous of growth and remarkable for its long period of bloom. The dominating color is the rosy purple of the silky falls flushed bright blue.....75c; 3 for \$1.75

**Peerless** (*Dykes*). Reddish violet, with gold beard so brilliant that it lights up the whole flower. Well branched stems, a strong grower, and free flowering. 36".....60c; 3 for \$1.50



A view of our gardens with iris San Diego in foreground.

**Peacemaker** (*Mitchell 1934*). A stylish porcelain colored iris with a pale lavender blue flush in center of falls. Very refined, having the clear appearance of a piece of newly lacquered furniture. Excellent as an aid in garden blending, because its pale shades make it a colorful substitute for white. Tall, well branched, with large blossoms. Blooms in mid-season. 42 inches.....\$3.00

**Perry's Blue**. Sibirica. Beautiful flowers of bright lavender blue with white markings on the falls, which are almost horizontal. Particularly adapted to planting in the pool border and exquisite for cutting. Award of Merit. R. H. S.....50c; 3 for \$1.00

**Persia** (*Ayres*). A flower of pearly character, and very attractive to iris lovers. Falls a blend of bluish lavender, standards iridescent steel blue. Brown haft and yellow beard. Smooth finish.....\$2.00

**Phyllis Bliss** (*Bliss*). A beautiful soft rosy lavender self. Very floriferous and makes a beautiful mass. Late. 33"....25c; 3 for 50c

**Pink Jadu** (*Sturtevant*). One of the most delicate iris in the garden. A plicata having a suffusion of lavender pink that makes this the pinkest plicata in the garden. Medium size. Small roots.....\$3.00

- Pink Jewel** (*Salbach 1933*). A very "warm" pink that has been unusually popular in the garden. Color pinkish lilac, with falls overlaid a glowing tourmaline pink. Increases rapidly and splendid for massing. One of the most popular smaller iris we know, and splendid when shown under electric light. ....\$1.00; 3 for \$2.50
- Pink Satin** (*Sass 1930*). The great appeal of this flower is the fine satiny finish. One of the most delicate of all the "pink" iris..\$3.00
- Pioneer** (*Bliss*). A fine rich red purple with a bluish sheen. Large flowers well placed on branching spikes. 36".....35c; 3 for 70c
- Pluie d'Or** (*Cayeux 1928*). A tall, pure, rich yellow with glistening golden buds and striking yellow beard. The widely and symmetrically branched stems carry an abundance of canary-colored flowers. Cert. of Merit, S. N. H. F. and the W. R. Dykes medal in 1928, for the finest new iris of the year. 36".....\$1.00; 3 for \$2.50
- Prairie Gold** (*Sass 1926*). A deep golden yellow self. Medium large blooms on branching 34" stems.....35c; 3 for 70c
- President Pilkington** (*Cayeux*). This fine new blend, although generally compared to Dolly Madison, is totally distinct. Large, of bold form, well-branched, many buds to stalk, and medium tall. Standards vinaceous buff underlaid old gold, with falls of soft violet faintly edged silvery brown.  
The elegant dignity of this iris gives it a charm that is difficult to describe. Color almost a repeat of the attractive Mme. Durand .....\$5.00
- Primrose** (*Sturtevant*). Clear primrose yellow. Long blooming. Fine for mass effect. 30".....25c; 3 for 50c
- Princess Beatrice**. A fine broad flower of lustrous lavender with flaring falls, satiny texture, and exceptional substance. Often listed as *Pallida dalmatica*.....20c; 3 for 35c
- Purissima** (*Mohr-Mitchell*). It is going to be very hard to improve on this splendid flower for a pure white of great poise, fine form, and heavy substance. With the sun shining through it, this iris has the iridescent appearance of frosted glass. Perfectly branched. See illustration.....\$1.00; 3 for \$2.50
- Querida** (*Mohr-Mitchell 1930*). Almost exactly of Afterglow coloring, but twice as large and of better shape and substance. The delicate pinkish lavender flowers, with style branches, beard and hafts all flushed yellow, give a warm pastel effect. Often blooms in fall. 42".....50c; 3 for \$1.00
- Rameses** (*Sass*). A very rich gold, pink, and apricot blend, one of the finest, and a Dykes Medal winner. Plants vigorous and hardy, stems branching and full of bloom. 36".....\$2.00
- Realm** (*Baker*). One of the finest of the tall blues. The flowers are large and of uniform rich periwinkle blue. The blooms are well spaced on stem. Very late. First class Cert. R. H. S. 1931. 40".....35c; 3 for 70c
- Rayo de Sol** (*Mohr-Mitchell 1930*). The Spanish word for sunbeam was given this seedling because of its bright yellow color. It is a sister of Mirasol, but has proved more vigorous, and its flowers, 4" high and 3½" broad, are larger. The color is lemon chrome (*Ridgway*), a bright clear yellow, the flaring falls having a few white lines at the haft. 36".....75c; 3 for \$1.75
- Red Wing** (*Sass*). A big bronzy red very much like *Allies* in color, but much larger and taller. One of the most attractive of the moderately priced reds....\$1.00; 3 for \$2.50
- Rialgar** (*Sturtevant*). A very free flowering rich yellow iris that has splendid carrying quality. Begins to bloom in early midseason and continues for a long time. It is a deep buttercup yellow with bronze striping on the flaring falls. 24".....25c; 3 for 50c
- Rita**. Blue.....20c; 3 for 35c
- Rob Roy** (*Kirkland 1931*). This fine iris, which merits a place among the best reds on form, color, etc., alone, is of great additional value because it is such an early bloomer, being the first big red to show color in our garden. Dominating color is bordeaux, a color of great carrying quality. Texture excellent, and does not fade.....\$2.50
- Romola** (*Bliss*). Bicolor of pale lilac standards and velvety red violet falls. Free flowering and exceedingly beautiful. Fragrant. 40".....35c; 3 for 70c
- Ronda** (*Mohr-Mitchell 1932*). We have a very possessive feeling for this rich ruby red iris because we saw it first in Mr. Mitchell's garden the year he was in Europe. It bloomed far down in the swale yet the first flower caught our eyes and we could hardly get down there fast enough to see the brilliant newcomer. It is the brightest red we have ever seen, beautifully proportioned, of heavy texture and of medium height. Makes a colorful clump for the middle of the border. It also rates high as an individual stalk. 30".....\$2.50
- Rosado** (*Mohr*). A beautiful clear soft pink, tall and a strong grower. 40".....25c; 3 for 50c
- Rose Mitchell** (*Essig*). A lovely rose colored self. 48".....\$1.00; 3 for \$2.50
- Roseway**. A bright rose pink with vivid orange beard.....25c; 3 for 50c
- Rosy Asia** (*Mitchell 1934*). A pinker edition of *Asia*, with broader falls and fine full form. A most delicate and delightful blend which is at its best under electric light. Large blooms.
- Falls pale Chinese violet, flushed deeper in center, with warm lilac standards and bright yellow beard. An iris which should be of great interest to breeders, as Mr. Mitchell has himself been using it in his breeding for pinks.....\$3.00
- Rosultra** (*Essig*). A rose colored iris that makes a good garden clump as it has fine carrying qualities. 40".....60c; 3 for \$1.50



WILLIAM MOHR

- Rubco** (*Mohr-Mitchell 1931*). A magnificent plant with huge flowers beautifully poised on strong stems 48" high. It begins to branch half way up the stem, sending out good wide branches. The standards are deep glistening rose, the broad thick textured falls are of deep maroon. The color cut, page 11, does not show the full, rich velvety richness that characterizes the falls.....\$4.00
- Sacramento** (*Mohr-Mitchell 1929*). This new giant plicata, though related to San Francisco and of comparable size and habit, is absolutely distinct from anything previously introduced. Its large flowers have a white ground, the standards heavily edged red purple, the falls reticulated with the same color. The prominent orange beard, unusual in plicatas, lights up the flowers in a most attractive way .....\$1.50
- San Francisco** (*Mohr-Mitchell*). Tall stems, branching low and wide like a candelabrum, carry large white flowers, of which both standards and falls are distinctly edged lavender. In size, shape and substance, there is nothing to approach it among the older plicatas, only the color pattern tells us it should be classed with them. Awarded Dykes Memorial Medal as best American introduction of 1927. Similar to Los Angeles but with wider blue edging.....75c; 3 for \$2.00
- San Diego** (*Mohr-Mitchell 1929*). This derivative of Gaudichau and El Capitan is identical in color with the former and in size and shape with the latter. Its immense blooms are of deep velvety blue-purple. Stems 46". Honorable Mention, A. I. S. 1931.....\$1.00; 3 for \$2.50
- San Gabriel** (*Dean*). A very large pinkish lavender of high excellence adding to its other merits the virtue of being early and long blooming. Branching, and very graceful. Fragrant. 60".....35c; 3 for 70c
- San Luis Rey** (*Mohr-Mitchell 1928*). A large violet-red iris of beautifully rounded form and rich heavy substance, set off by a golden beard and a yellow center.  
Mr. Mitchell calls it his "Grand Opera," because in addition to carrying the rich coloring of the older iris, "Opera," it is twice as large and grows twice as tall.....35c; 3 for 70c
- San Rafael** (*Mohr-Mitchell*). A dark red violet that attracts attention clear across the garden. An overtone of black, lit by a yellow beard, adds to the richness of color. Standards domed, and falls broad and flaring. Early. 38".....\$1.00; 3 for \$2.50
- Santa Barbara** (*Mohr*). This is the finest of the pure lavender blues. The size, substance, spreading horizontal falls, well branched stalks and the vigor of growth entitle this beautiful iris to be rated with the highest. See color picture, page 19. Award of Merit, R. H. S. 40".....35c; 3 for 70c
- Seminole** (*Farr*). A brilliant velvety light red purple with a conspicuous orange beard. 30".....20c; 3 for 35c
- Santa Clara** (*Mohr-Mitchell 1931*). Tall, medium high branched, periwinkle blue self of noble and beautiful form. The flower is very large, flaring as to falls, heavy as to substance and has ruffled edges. Being bred from Santa Barbara and Gaudichau, it carries the fine quality of the former into a darker flower. Early.....75c; 3 for \$1.75
- Santa Fe** (*Mohr-Mitchell 1930*). An almost white Santa Barbara with the same perfect form, flaring falls and unequalled substance. The pale blue evident when the flower is opening changes almost to white. A fine plant for the middle of the border. The medium sized flowers, with the airily floating falls remain perfect for many days. Early and free flowering. 36".....60c; 3 for \$1.50
- Senorita** (*Mohr-Mitchell 1928*). The color scheme is of pastel shades, pale lavender overlaid luminous yellow. Falls lilac paling toward the edges. The primrose style-arms and warm veining of the haft make a charming flower for garden or house. Fine in mass. 46".....35c; 3 for 70c
- Sensation** (*Cayeux*). A beautiful self-colored aniline-blue of great poise and elegance. The substance is heavy, the standards beautifully arched, the falls flaring and the stems tall and sturdy. Fragrant. Late..\$1.25
- Shasta** (*Mohr-Mitchell 1927*). This new white of different parentage than Purissima is also entirely distinct in style and effect and well worthy of being named for California's great white-capped mountain. The 36" stalks are well but high branched. Free flowering and unexcelled in mass planting. ....60c; 3 for \$1.50
- Shining Waters** (*Essig*). The finest of the Essig blues, and probably the very best clear light blue in commerce. Tall and stately, this splendid large iris carries twelve or more buds to each of its well branched stalks. Color, clear campanula blue. 48". This fine iris, which is better than many \$10.00 to \$20.00 varieties, is now selling in its second year for.....\$3.50
- Sikh** (*G. P. Baker*). A rich bronzy purple blend. Flaring velvety falls with bronzy purple reticulations, orange beard, heavy substance. Floriferous.....50c; 3 for \$1.00
- Sindjkha**. Silvery blend.....20c; 3 for 35c
- Sir Michael** (*Yeld*). Generally considered to be the finest blue bicolor. A handsome, up-standing iris that ranks as one of the best ever produced. The color picture, on cover, does not come near doing this iris justice. The standards are clear blue with none of the red tones pictured, and the falls are a brighter, liver shade of royal purple....75c
- Soledad**. Early blooming yellow.20c; 3 for 35c
- Solferino** (*Cayeux*). A pure lilac-red self of the same beautiful form and fine substance as Aphrodite, of which it is a seedling. The flowers are larger, the color deeper and the stems 10" taller. 48".....35c; 3 for 70c

**Souv. de Loetitia Michaud** (*Millet*). Very large flowers of fine texture. The color is lobelia blue, shading lighter at the edges. Fragrant. 40".....60c; 3 for \$1.50

**Souv. de Mme. Gaudichau**. Dark velvety blue purple bicolor of fine shape, finish and exceptional substance. Fragrant. 36".....25c; 3 for 50c

**Stylosa** (Winter blooming iris). Plants are low growing with long grasslike foliage. Flowers lavender blue with orange tongue. Delightfully fragrant. Begins blooming in September on the Pacific Coast and continues throughout the winter. Should be planted in spring. Beardless.....25c; 3 for 50c

**Summer Cloud** (*Kirkland 1931*). The standards first appear as light blue, soon changing to a gray blue white like a cloud in the summer sky. The falls are blue as the sky itself. This combination of color is wonderfully pleasing. The flower is large and well proportioned; the stem is 32" tall, and foliage abundant. The plant is hardy and a strong grower. Midseason.....\$2.50

**Sunbeam** (*Murrell 1928*). A rich deep canary yellow self, standards and falls being identical in tone and without markings. The form is round, texture very smooth, and the flowers abundant. Very early. 20" .35c; 3 for 70c

**Sunol** (*Mohr-Mitchell 1933*). This remarkable yellow blend bears some resemblance to *Ochracea* in coloring, but the two should not be mentioned in the same breath when size and form are considered.

Sunol is a beautiful iridescent golden bronze with a flush of lavender in the center of falls. The form of the bloom is excellent, and the low branching candelabrum type stems carry eight to nine of the beautiful flowers. Plant tall and substance of flowers excellent. First award Spring Garden Show, Oakland, Calif., 1932. (Given only on rating of 90 or over.) 37".....\$10.00

**Surprise** (*Cooley*). Tall blue, flushed heliotrope.....35c; 3 for 70c

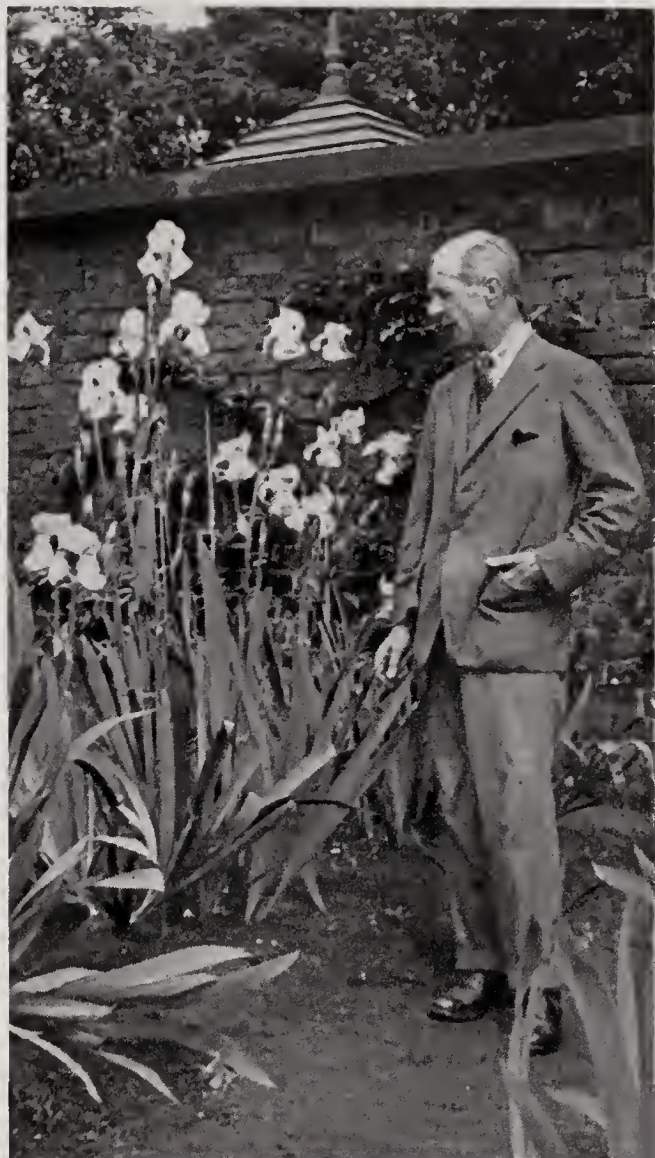
**Sunset**—See *Ochracea*.

**Susan Bliss** (*Bliss*). Rosy lilac pink with orange beard. Blooms freely and the color carries well. Late and tall....25c; 3 for 50c

**Talisman** (*Murrell*). One of the finest small iris grown. A blend of apricot, yellow, and pinkish shades that is most unusual. Standards yellow with rosy pink veining at tips. Falls rosy lavender pink with yellow reticulations. Golden haft. 20".....\$2.50

**Tenebrae** (*Bliss*). A fine dark iris. Standards purple, with falls rich velvety black purple. ....25c; 3 for 50c

**Tenaya** (*Essig*). A taller, better branched Modoc. Has the same glowing velvety blackish red-purple, and just as bright. We regard this as one of Prof. Essig's finest introductions since Easter Morn. Very showy. ....\$5.00



Geoffrey Pilkington and a planting of *Purissima* in his garden—Liverpool, England.

**Tiger-Tiger** (*Wareham 1932*). A fine red iris from the Wareham collection. Very bright, and of good size and habit. Distinct from *Dauntless*, *Rubeo*, and the other reds. Late. Brown standards, velvet red falls.....\$5.00

**Trostringer** (*Sass*). A much larger and taller flower than *Caroline E. Stringer*, with the same beautiful pink tone.....25c; 3 for 50c

**Tioga** (*Salbach 1931*). This fine deep velvety blue and violet bicolor has received much praise, both in our own and other gardens. A tall, well branched iris that is most regal in appearance. The large broad falls are horizontal and both falls and standards are well proportioned. Heavy substance and smooth texture, and delightfully fragrant. Blooms over a long period. The finest we have seen in this type of iris.....\$2.00

**True Delight** (*Sturtevant*). A lovely white plicata with rose colored venation and style arms. 36".....25c; 3 for 50c

- Uncle Remus** (*Essig 1928*). Deep mulberry purple self of splendid form and texture. The beard is cadmium yellow with purple undertone. The stems are stiff, the foliage clean and vigorous. 36".....50c; 3 for \$1.00
- Valencia** (*Mohr*). A beautiful bright orange-buff self. Hardy and prolific. Low growing. 20".....25c; 3 for 50c
- Vert-Galant** (*Cayeux 1929*). Coppery red shading to garnet, with yellow throat reticulated brown. The oval flower has a fine smooth finish. The plants are tall and husky. Awarded Dykes Medal, 1929....\$2.50
- Vesper Gold** (*Williamson 1926*). A blend of creamy-buff flushed amber yellow.....35c; 3 for 70c
- William Mohr** (*Mohr*). A wonderful hybrid from Parisiana X gatesii. The ground color is pale lilac, standards flushed darker, the whole flower beautifully veined manganese violet. Substance and shape of the very best, a very large flower; actual measurements showing standards 3¼" by 2¾" and falls 3" by 2". Stems strong and rigid, 20" to 24", usually four flowers on each. Splendid in mass and a rapid increaser. Practically the only iris which can be grown in window or other boxes or pots.
- William Mohr has proven itself hardy in so many Eastern gardens we predict that as soon as stock is available, this beautiful iris will supplant Susiana, the Mourning Iris, which is difficult to raise even in California. See color cut, page 15. Award of Merit, R. H. S. Rhizomes naturally small.....75c; 3 for \$2.00
- Wambliska** (*J. Sass 1931*). Large, perfectly formed pure white, with a bluish sheen at the center. Pale yellow beard with a few yellow stripes at the haft. Crinkled. Hon. Ment., A. I. S., 1931.....\$1.00
- W. R. Dykes** (*Dykes*). This remarkable English novelty which is one of the parents of Happy Days (Mitchell 1934) is one of the finest for breeders, and itself gives immense, large yellow blooms. A markedly large percentage of Dykes seedlings produce flowers as large, or even larger than Dykes itself. Long broad falls, sometimes flecked with purple .....\$3.00
- Yellow Moon** (*Sturtevant*). An amber yellow self of pallida habit. Long blooming, fine in mass. 24".....25c; 3 for 50c
- Yellow Pearl** (*Salbach 1931*). A big luminous pale primrose yellow of nicely rounded form and heavy texture. Broad domed standards, wide falls set off by gold markings at the haft, amber style arms. The foliage is long and slender, stalks tall and well branched and the plant very free blooming. 44".....\$1.25; 3 for \$3.00
- Yolande** (*Millet*). Velvety pansy blue. Very large beautifully formed flowers of heavy substance. Plants well branched and free blooming. Excellent in mass..25c; 3 for 50c
- Zulu** (*Bliss*). Dark rich velvety blue. Fragrant.....35c; 3 for 70c
- Zwannenburg**. Standards bronzy fawn, falls old gold, flushed bronze and flaked maroon. Blooms very early with Soledad.....25c; 3 for 50c

See pages 3 and 21 for Special Collections

ALL GARDEN ENTHUSIASTS should be interested in Sydney B. Mitchell's new book "From a Sunset Garden." For the general gardener, this book offers a series of invaluable articles on garden topics including, among others, articles on daffodils, annuals, gladiolus, fuchsias, and shrubs. **The iris enthusiast, however, should purchase the book for the three chapters on iris alone.** These include one most fascinating chapter on iris breeding in which Mr. Mitchell lists two breeding studs — an inexpensive one for the beginner, and another for the advanced amateur. This book is by no means limited in appeal to California gardeners. **WE CAN SUPPLY AUTOGRAPHED COPIES AT \$3.15 POSTPAID.**



SANTA BARBARA

## UNSOLICITED COMMENDATION

*Excerpts from a letter dated May 23, 1934, tell the story of the high quality of our stock and our introductions better than anything we ourselves can do or say:*

“This is just a note of appreciation for the very satisfactory shipment of fine irises which you sent me last summer . . . I really had most excellent results from your shipment, and I want to thank you for the very fine stock you sent me and congratulate you on some of your introductions.

“Nearly everyone in my garden this year agreed that ‘California Gold’ was the most outstanding iris in the garden. It bloomed quite well for me on a first-year plant, although perhaps the blooms were somewhat bunched, and I am looking forward to a taller and better branched stalk next year. It is a glorious iris and you have every reason to be proud of it.

“‘Sunol’ bloomed a few days before ‘California Gold’ and I was thoroughly delighted with it. Unfortunately, I had ‘California Gold’ planted too close to it and the brightness of the latter detracted somewhat from the duller tones of ‘Sunol’ later on. But I still think you have a marvelous yellow blend in ‘Sunol.’ It gave me two fine stalks of bloom, likewise a little bunched, but I believe will be still better next year.

“We all like the color of ‘Eleanor Blue’ and ‘Pink Jewel’. I don’t think I had a much better iris in the garden than ‘Natividad’. It is magnificent, and I am surprised that I haven’t heard more about how good it is. Every iris you sent me bloomed, with the exception of ‘Ronda’, despite a very hard winter (the worst we have had in years), and the plant of ‘Ronda’ looks just as healthy as any of the rest. ‘Tioga’ is a gorgeous dark purple and I know I am going to like it . . . ‘Alta California’, next to ‘California Gold’ is the best yellow I have seen, and ‘Rubeo’ is the best red bloom in my garden as yet.”

This from an East Coast customer.



## SPECIAL COMBINATION OFFERS

Sent by prepaid post. All varieties carefully labeled.  
**Note**—No substitutions will be allowed in these collections.

### A REPRESENTATIVE COLLECTION OF TWELVE OUTSTANDING IRIS

**GAYNELLE**—Early yellow.

**GOLD TOP**—Old gold and violet.

**ELEGANTE**—Silvery lavender.

**PADRE**—Rosy purple, flushed blue.

**PINK JEWEL**—Pink.

**RAYO DE SOL**—Yellow.

**SAN LUIS REY**—Red-violet.

**SANTA CLARA**—Tall blue.

**SHASTA**—White.

**SIKH**—Bronze-purple blend.

One each of the ten listed above and any two of the following four:

**FRIEDA MOHR**—Lavender pink.

**MONTEREY**—Dark red violet.

**YELLOW PEARL**—Tall cream.

**WM. MOHR**—Lilac blue.

(Where no choice is indicated, we will fill with Frieda Mohr and Yellow Pearl)

**Twelve Rhizomes in All—Special Collection Price, \$5.00**

### NEWER VARIETIES GROUP

Your choice, one rhizome each, of any five for \$7.50

**BLUE VELVET**

**BRONZE BEACON**

**DEPUTE NOMBLOT**

**LEGEND**

**MODOC**

**RAMESES**

**ROB ROY**

**TALISMAN**

**One each, any five, \$7.50**

### MASSING COLLECTIONS

For large plantings for quick landscape effect, we offer ten groups, all labeled, but of our selection. While we reserve the choice, we will omit any varieties you already have if you will furnish us with a list.

**Ten each, ten or more varieties, labeled as to color in groups as follows:**  
 Light lavender, violet, blue, blending, bronze, pink, rose, red-violet, yellow, and yellow and mahogany — varieties of our selection. (100 rhizomes.) \$6.00, Express Collect.



### SMALL GARDEN GROUP—TEN FINE VARIETIES

**Dream**—Orchid pink

**Firefall**—Red.

**Gloaming**—Brown.

**Jacqueline Guillot**—Blue.

**Labor**—Violet.

**Moonbeam**—Pale yellow.

**Nereus**—Blue bicolor.

**Rialgar**—Bright yellow.

**Senorita**—Lavender overlaid yellow.

**Valencia**—Orange.

**One rhizome each, ten varieties, labeled, \$1.75**

## SALBACH SELECTED SEED SPECIALTIES

Fertilizer will help, and so will regular cultivation—but dollar on dollar spent for plant food, and hour on hour of garden work will not produce prize winners if the plants come from inferior seed strains. That is why we are so confident that no real gardener will begrudge the few extra cents required to secure the seeds of the finest rare strains—and that is why we have purchased seeds that actually cost us from two to ten times as much as the ordinary strains.

**NOTE**—Seeds are annuals unless marked otherwise. P. means perennial. All seeds from new crop. Delivery on or before July 15th, except where specified otherwise.

**AQUILEGIA** (*Columbine*). P. Waller-Franklin strain. Simply immense blooms with extra long spurs. A magnificent strain, described by Sydney B. Mitchell in "From a Sunset Garden" as the finest American strain, equal to that of any foreign firm.

**Long Spurred Blue Shades Superb** (*Waller-Franklin*). Color a clear beautiful blue. 25c pkt.

**Long Spurred, Waller-Franklin Hybrids, mixed**—in orange, scarlet, yellow, pink, rose, and white shades. 25c pkt.

**BROOM** (*Cytisus*). P. Pure yellow and red-yellow variegated selections. 25c pkt.

**CALENDULA "SUNSHINE" OR CHRYSANTHA** (*Chrysanthemum* flowered). A new departure that you would hardly recognize as a calendula. Awarded seedmen's "All-American" as the finest seed novelty for the season of 1934. The petals are long and twisted inward in such a manner that the blooms resemble chrysanthemums. Color a deep golden yellow, free flowering, and excellent for cutting. Flowers throughout the year if blooms kept cut. 25c pkt.

**DELPHINIUM** (*Reinelt-Vetterle Strain*). P.

We again offer exclusively, Frank Reinelt's hand-hybridized delphinium strain—than which no finer can be had.

Those who have seen these remarkable, tall, full-blooming specimens in our own and Sydney B. Mitchell's garden will agree that we are in no way overestimating the quality of Reinelt delphinium seed, despite our most lavish praise.

Plant as early as possible to assure a complete flowering the first blooming season, although planting even as late as November will give a good percentage of bloom the first season.

**Pastel Shades Mixture.** In beautiful shades of lavender pink. 50c pkt.

**Blue Shades Mixture.** Deep blue and violet colors. 50c pkt.

**Lavender Shades Mixture.** Delicate colors. 50c pkt.

**White Mixture.** The beautiful white spikes that are so effective and popular. Supply limited. 50c pkt.

**Balanced Assortment.** Including seeds from all four of the mixtures listed above. 50c.

**DELPHINIUM, Dwarf or Chinensis.** One of the most effective plants possible for small borders, and for massing. Literally covered with blooms. A perennial which blooms the first year. "Something different" which will add a distinctive touch to your garden. Delivery August 15.

**Azure Fairy.** Clear sky blue. 9". 15c pkt.

**Blue Butterfly, Improved.** Deep ultramarine blue. 12". 15c pkt.



**BROOM.** P. For those Westerners who wish colorful and unusual shrubs, we have secured a limited supply of hybrid broom seeds. These will produce plants in full color assortment, variegated, in brilliant shades of red, pink, gold, apricot, brown, rose, orange, and other colors. The shrubs are literally covered with myriads of the bright little pea-shaped flowers, which are in bloom for a long period of the year. Being offered for the first time in America. Drought resistant. Stock limited. \$1.00 pkt.

**ESCHSCHOLTZIA (California Poppy).** We offer the most outstanding named variety, and a mixture, both of the new dwarf-erect type that are so much tidier and so much more colorful because of their compact growing habit than the other kinds.

**Fireflame.** Deep coppery wallflower red. Stunning and most unusual in mass. 15c pkt.

**Hybrida Mixture.** A mixture of dwarf-erect varieties containing new colors in eschscholtzias, including soft coral pink, scarlet, chrome, copper, red, claret, and royal purple. 15c pkt.

**GODETIA SYBIL SHERWOOD.** The beautiful large flowered single godetia which we imported last season direct from England. Considered the finest godetia in commerce, and worthy of a place in every garden.

Bright salmon pink, edged silvery white. A profuse bloomer which lasts almost indefinitely when cut. Delivery August 15. 25c pkt.

**GODETIA (Azalea-flowered).** See page 25.

**GOURDS.** Direct from the outstanding Bodger Collection.

**Large Varieties, Assorted.** 15c pkt.

**Small Varieties, Assorted.** Fine for shel-lacking. 15c pkt.

**Large and Small Sorts, Mixed.** 15c pkt.

**HELIANTHEMUM (Sun-rose).** P. A most delightful dwarf evergreen shrub six to nine inches tall. Covered with brightly colored flowers resembling miniature single roses, such as the Isobel. In white, yellow, bronze, red, pink, apricot, rose, and similar shades. Has attracted constant attention in our garden.

We are fortunate enough to secure exclusive sale of the seed from Sydney B. Mitchell's own garden. His stock was obtained from John Nicholls of Scotland, and W. M. Christy of England, who, between them, raised most of the named forms given awards at the R. H. S. trial gardens at Wisley, England. In mixed colors. 50c pkt.

**ICELAND POPPIES (*Nudicaule*).** You who are in the habit of visiting the beautiful Santa Maria Inn half-way between San Francisco and Los Angeles are no doubt familiar with the remarkable strain of these most effective cut-flowers developed by Frank J. McCoy, manager of the Inn. Mr. McCoy has built an international reputation for the Inn by filling it with exquisitely arranged bouquets of the most gorgeous flowers obtainable. Most of these blooms he grows himself, and Iceland poppies have been his particular hobby. He has scoured the world for seeds, and has selected and re-selected until he has developed a strain that is unquestionably the finest in America and probably unexcelled anywhere.

Iceland poppies, like gladiolus, may be planted in succession. Bloom approximately three months from the time they are planted. They are most hardy for early blooms, as they stand frost even when other plants wither and blacken. Very floriferous,

with long stems, and most excellent cut-flowers.

At its best sown in late fall, either where it will flower, or in boxes and transplanted when young.

We offer exclusively:

**Santa Maria Inn strain of Orange and Gold,** Frank J. McCoy re-selections (quantity limited, and subject to stock)—Imported originally from Australia, and ranked by



ICELAND POPPIES

Mr. McCoy as one of the finest strains ever purchased. Large flowers of orange and gold coloring, completely distinct from any other strain. 35c pkt.

**Santa Maria Inn strain of Coonara Pinks,** Frank J. McCoy re-selections. Also imported originally from Australia. Very fine, 95 per cent pink. A very few packets. 35c pkt.

**Santa Maria Inn Mixture,** Frank J. McCoy re-selections. Re-selected from the finest strains obtainable anywhere—the best mixture you could possibly have. Orange, yellow, white, pink and other shades. Order three packets and have a full succession of bloom. 25c pkt. 3 pkts. for 60c.

**LINARIA FAIRY BOUQUET**—See Wildflower Collection.

**LUPINES - HARTWEGGI GIANTS, Mixed.**

Like the famous lupines of England. So far removed from the common wild type that they might easily be called "delphinium flowered." Three to four feet tall, of base branching habit, and having four to six bloom spikes to the plant. Easily grown. Colors include dark blue, sky blue, rose, and white, mixed. Delivery Sept. 1. 25c pkt.

**NASTURTIIUM, GOLDEN GLEAM.** Double, sweet-scented, and free flowering. This outstanding development was awarded the seedmen's "All-American" as the best seed novelty for the 1933 season, and was a decided sensation. Our stock of this bright golden yellow nasturtium comes direct from the introducer. 15c pkt.

**NASTURTIUM, GLEAM HYBRIDS.** Seedlings from the popular Golden Gleam with the same growing habit and the same profusion of bright double flowers. In colors never dreamed of before in double nasturtiums—salmon, golden yellow, orange scarlet, cerise, creamy yellow, orange, crimson, and gold flushed scarlet.

The release of these hybrids, together with the Scarlet Gleam (below) form one of the most looked for announcements in the seed world. Packet of ten seeds, available September 1. 25c.

**NASTURTIUM, SCARLET GLEAM.** First of the Gleam hybrid nasturtiums to be isolated in separate colors—and a variety that is sure to be most popular. Immense blooms, colored fiery orange-scarlet, and considered even more intensely dazzling than the showy Golden Gleam. Packet of ten seeds, available September 1. 35c.

**RANUNCULUS.** A bright showy flower usually grown from tubers, but actually more satisfactory from seed, as the latter are disease resistant.

Blooms in showiest yellow, red, scarlet, orange, white, and other autumn colors, in varying degrees of doubleness.

We have been fortunate enough to secure a supply from the famous Armacost and Royston Tecolote Giant Strain, mixed colors.

Easily raised from seed sown from August to November, depending on when the cool weather starts. Can be grown on like winter flowering stocks and set out in autumn. One packet does the work of dozens of tubers, and for only 50c pkt.

**SCABIOSA CAUCASICA.** P. (*Blue Bonnet*).

**New Isaac House Strain.** The finest scabiosa for Pacific Coast gardens. Huge flowers, fringed and ruffled, in shades from lavender to dark blue. 25c pkt.

**SNAPDRAGONS—Lammerts Rust Proof Strain (*Antirrhinum*).** In offering the new rust-proof snapdragons, we make no claim that we are able to duplicate, as yet, the full long spikes of the finest non-resistant varieties now in commerce—but we feel that the strain we offer is the finest to be had, and we know that the general garden planting from these seeds will be much more satisfactory than plantings from non-resistant seeds.

Being Research Associate in Genetics at the University of California, Dr. W. E. Lammerts has combined a full academic background with the practical viewpoint and aims of a seedsman to develop the strain which we offer. Every seed comes from a parent which has been tested by artificial inoculation, and as a result, we can guarantee a minimum of 75% rust proof plants. We have reason to believe that seeds of this strain will produce a higher percentage of rust resistant plants than those of any other strain.

We offer this remarkable development in



GODETIA, SYBIL SHERWOOD

full color mixture, and in separate colors (delivery in August) as follows:

TALL, LARGE FLOWERING MAXIMUM TYPE

Canary yellow—75c pkt.

Dark pink—75c pkt.

Light appleblossom pink—75c pkt.

Mixture of red shades—50c pkt.

White—75c pkt.

Balanced color mixture (including colors above)—35c pkt.

INTERMEDIATE OR BEDDING TYPE

Red shades—75c pkt.

Copper shades—75c pkt.

**SWEET PEAS—Early flowering type.** After most careful consideration, we have selected for our listing one variety in each of the six most desired colors as being the best and most outstanding in its class. Sold separately or in group collection. Also a full color mixture of the best sweet peas. In California, plant in early fall for Xmas blooms.

**Burpee's Giant Pink**—Soft pink, blended luminous rose.

**Burpee's Lavender**—Wistaria lavender.

**Flamigo**—Salmon pink.

**Mrs. Herbert Hoover**—Clear bright blue.

**Red Bird**—Bright crimson red.

**White Harmony**—Pure white.

**Group Collection**—One large packet, each of the varieties listed above (6 pkts.)—50c.

**Individual varieties**—Large pkt., ea.—15c.

**Full color mixture**—Finest sweet peas, including varieties named above, and others, mixed. Large packet—25c.

**WILD FLOWERS.** Distinctive California wild flowers in strains improved by selection and breeding. All low growing annuals. Easy doers, best sown in fall to bloom in spring. Group collection:

**Baby Blue Eyes** (*Nemophila Insignis*). Sometimes called California bluebell. Ethereally beautiful flower of azure blue. Useful for half shady places and as a carpet for bulb beds.

**Blazing Star** (*Mentzelia Lindleyii*). Also known as *Bartonia Aurea*. Brilliant blooms like a pointed petalled poppy. Color—gold.

**California Poppy** (*Eschscholtzia*). Dwarf erect type in full new color mixture. (Described in general list.)

**Clarkia Elegans, Double.** Dwarf growing, with brilliant flowers of ragged form. Will take part shade.

**Godetia, Double Azalea-flowered.** A profusely blooming annual in shades of carmine, lavender, lilac, pink, white, etc.

**Linaria Fairy Bouquet** (New) — (Wild Snapdragon)—Compact plants 8-10" high, in distinct colors, such as rose, yellow, pink, lavender, carmine, red, white, and violet. A gem for border or rock garden.

**Group Collection**—One packet each of all six—50c.

**Individual Packets** 15c each, except *Linaria Fairy Bouquet*, which sells at 25c pkt.

#### PRICES ON QUANTITIES OF SEEDS FOR LARGE PLANTINGS

**Aquilegia**—Blue shades, or mixed, 1/16 oz., 85c.

**Calendula Sunshine**—Oz., 75c.

**Delphinium (Reinelt-Vetterle Strain)**—1/16 oz., \$1.35.

**Delphinium—Dwarf, Azure Fairy or Blue Butterfly**—1/8 oz., 50c.

**Eschscholtzia—Hybrida or Fireflame**—1/4 oz., 75c; oz., \$2.25.

**Godetia, Sybil Sherwood**—1/16 oz., 60c.

**Iceland Poppies, Santa Maria Inn Strain**—Orange and Gold—1/16 oz., 85c.  
Coonara Pinks—1/16 oz., 85c.  
Mixed—1/16 oz., 60c.

**Lupines, Hartweggi Giants**—Mixed, 1/4 oz., 75c.

**Nasturtium, Golden Gleam**—1/4 lb., 85c.

**Ranunculus**—1/32 oz., \$1.25.

**Scabiosa Caucasica**—1/16 oz., 85c.

**Sweet Peas**—Any variety, 1/2 oz., 60c.  
Mixture—1/2 oz., 50c.

**Wild Flowers**—

**Baby Blue Eyes**—Oz., 50c.

**Blazing Star**—Oz., 60c.

**Clarkia Elegans**—1/2 oz., 50c.

**Godetia, Azalea Flowered**—1/4 oz., 50c.

**Linaria, Fairy Bouquet**—1/16 oz., 85c.

## WE CALL PARTICULAR ATTENTION

To the following information concerning the seed strains we list:

**AQUILEGIA (Waller-Franklin Strain)**—Described by Sydney B. Mitchell in "From a Sunset Garden" as the finest American strains of columbine.

**DELPHINIUM (Reinelt - Vetterle Strain)**—Huge full spikes in beautiful and delicate color variations. Have consistently out-performed seeds of other strains, some of which sell for as high as \$10.00 per packet.

**HELIANTHEMUM**—A beautiful dwarf flowering shrub. Our seeds obtained from Sydney B. Mitchell, whose original stock came from the world famous John Nicholl and W. M. Christy strains.

**ICELAND POPPIES (Santa Maria Inn Strain)**—The world's finest strain, built up by Frank J. McCoy, the genial proprietor of the Inn, whose hobby has been the growing of the finest Iceland Poppies.

**SNAPDRAGONS (Lammerts Rust - Proof Strain)**—Not only are we one of the very first to offer rust-proof snapdragons, but we have secured stock from the very finest strain. This includes a limited supply in separate colors.

**RANUNCULUS (Tecolote Giant Strain)**—Tecolote Giants has been a by-word among commercial growers of ranunculus for years.

IN ADDITION, we have secured these outstanding novelties:

**CALENDULA**—Sunshine.    **GODETIA**—Sybil Sherwood.    **NASTURTIUMS**—Scarlet Gleam  
**BROOM**—Colored hybrids.    **LINARIA**—Fairy Bouquet.    and Gleam Hybrids.  
**ESCHSCHOLTZIA** in colors.    **LUPINES**—Hartweggi Giants.



W. ZUIDERVELD

*Dutch*

The Dutch iris are unsurpassed as cut flowers, as they keep from ten to fourteen days and their hardiness and wide color range have made them most popular for garden purposes. The varieties we are offering are the best of the world famous DeGraff hybrids, and are a distinct improvement over the other Dutch and Spanish iris commonly sold.

**A. Bloemaard.** Standards dark blue, falls lighter blue. Large flower. Early. 3 for 25c, 12 for 75c, 25 for \$1.35, 100 for \$5.00.

**Adrian Backer.** Lilac, almost lavender. 3 for 25c, 12 for 75c, 25 for \$1.35, 100 for \$5.00.

**Golden Bronze.** One of the finest of all Dutch iris. Standards dark violet, falls attractive golden bronze. 15c each, 3 for 40c, 12 for \$1.35, 25 for \$2.50, 100 for \$8.50.

**Jacob de Wit.** Standards deep blue, falls slightly lighter. 3 for 25c, 12 for 75c, 25 for \$1.35, 100 for \$5.00.

**Leonardo da Vinci.** Standards white, falls deep yellow. Fine. 3 for 25c, 12 for 75c, 25 for \$1.35, 100 for \$5.00.

**S. de Vleiger.** Soft sky blue with narrow orange stripe. Outstanding. 15c each, 3 for 35c, 12 for \$1.25, 25 for \$2.25, 100 for \$7.50.

**Wedgewood.** Blue, lighter than Jacob de Wit, but darker than S. de Vleiger. The first to bloom. 15c each, 3 for 35c, 12 for \$1.25, 25 for \$2.25, 100 for \$7.50.

**White Excelsior.** Pure white self set off by narrow yellow stripe on falls. 3 for 20c, 12 for 60c, 25 for \$1.10, 100 for \$4.00.

**Wm. Verschuur.** Standards violet, tinged bronze, falls deep bronze. "Different." 15c each, 3 for 40c, 12 for \$1.35, 25 for \$2.50, 100 for \$8.50.

**W. Zuiderveld.** A decided improvement over Adrian Backer in the lavender shades. 20c each, 3 for 50c, 12 for \$1.50, 25 for \$2.75, 100 for \$10.00.

**Yellow Queen.** Pure golden yellow. 3 for 25c, 12 for 75c, 25 for \$1.35, 100 for \$5.00.

## *Iris*

As with the bearded iris, we send out only the finest stock. Each variety will be labeled unless specified otherwise. Planting season for Dutch iris is from September 15 to November 15. Dutch iris are grown from bulbs, and have long, wiry stems. They can be planted in very small space.



JACOB DE WIT

### GROUP COLLECTIONS

Dutch iris in assortment, not labeled, including varieties in blue, yellow, white, and lavender shades. 25 for \$1.50, 100 for \$5.00.

Six each, labeled, of these newest varieties — Golden Bronze, S. de Vleiger, Wm. Verschuur, and W. Zuiderveld (24 bulbs) for \$2.50.

Six each, labeled, of A. Bloemaard, Adrian Backer, Jacob de Wit, White Excelsior, and Yellow Queen (30 bulbs), for \$1.75.

Three each, every variety listed, labeled, including Reticulata (36 bulbs), \$3.50.

### IRIS RETICULATA

This violet scented iris, which flowers outside in February, is similar to the Dutch iris, except that it grows on two or three inch stems, making it an exquisite flower for rock gardens or pots. Color violet blue with yellow blotch. Most colorful and distinct. 25c each, 3 for 60c, 12 for \$2.25, 25 for \$4.00, 100 for \$12.50.

## NARCISSI

Our Narcissi, which are American grown, come from the most reliable source there is. They are all the large double nosed bulbs that will produce two or more blooms apiece. Delivery in fall.

**YELLOW TRUMPET DAFFODILS**

**King Alfred**—One of the finest. Large and deep yellow in color. 15c each, 3 for 40c, 12 for \$1.25, 50 for \$4.50.

**Tresserve**—Deep canary yellow with slightly paler perianth. Giant flower with trumpet mouth 2" wide. A marked improvement over Emperor. 15c each, 3 for 30c, 12 for \$1.00, 50 for \$3.75.

**WHITE TRUMPET DAFFODILS**

**Mrs. E. H. Krelage**—Creamy to ivory white. Good form and texture. 20c each, 3 for 50c, 12 for \$1.75, 50 for \$6.50.

**BICOLOR DAFFODILS**

**Spring Glory**—Huge, with pure yellow trumpet, white perianth. Early. 15c each, 3 for 30c, 12 for \$1.00, 50 for \$3.75.

**INCOMPARABILIS OR MEDIUM CUP NARCISSUS**

**Croesus**—Most popular. Light canary yellow perianth, broad fluted cup of rich orange to base. Free flowering. 20c each, 3 for 50c, 12 for \$1.75, 50 for \$6.50.

**Gloria Mundi**—Yellow perianth with cup of deep yellow, edged red. 25c each, 3 for 60c, 12 for \$2.00, 50 for \$7.00.

**Whitewell**—Broad petaled perianth of pure white, fluted cup deep primrose, with orange edge. 15c each, 3 for 40c, 12 for \$1.10, 50 for \$4.00.

**BARRI (Small Cup) NARCISSUS**

**Bath's Flame**—Yellow perianth with darker cup deeply edged orange scarlet. 25c each, 3 for 60c, 12 for \$2.00.

**Firetail**—Creamy white perianth and large orange cup with scarlet orange frill. 40c each, 3 for \$1.00, 12 for \$3.50.

**Nannie Nunn**—Late blooming, with bright orange red cup and white perianth. Good to extend the season. 15c each, 3 for 40c, 12 for \$1.25, 50 for \$4.50.

**Seagull**—Broad petaled pure white perianth, cup light yellow with red picotee edge. Fine for naturalizing. Tall. Late blooming. 10c each, 3 for 25c, 12 for 75c, 50 for \$2.75.

**Sunrise**—White perianth, with golden rays up each petal. Small cup of deep orange yellow. Attractive. 15c, 3 for 40c, 12 for \$1.10, 50 for \$4.00.

**LEEDSII NARCISSUS.** (Perianth white, cup white or pale citron.)

**Hera**—Creamy white, except for dainty edging of light primrose on the cup, which is frilled. 15c each, 3 for 40c, 12 for \$1.10.

**Lord Kitchener**—White perianth, cup canary yellow. One of the best. 15c each, 3 for 30c, 12 for \$1.00, 50 for \$3.75.

**Tunis**—One of the most striking new varieties being offered in America this season. A giant in the class, almost as large as the trumpet daffodils. Cup opening buff and finishing white with a broad edge of coppery gold. Tall and vigorous. \$6.00 each.

**CYCLAMINEUS HYBRID**

**February Gold**—Perianth golden yellow, trumpet fringed orange. Trumpet straight and tubelike, with perianth reflexed as in a cyclamen. One of the earliest of all to bloom. 40c each, 3 for \$1.00, 12 for \$3.50.

**JONQUIL HYBRIDS**

**Buttercup**—Clear buttercup yellow. Straight trumpet. Good. 15c each, 3 for 40c, 12 for \$1.10, 50 for \$4.00.

**Odorous Orange Queen**—A very striking variety, 2 to 3 flowers on a stem, color intense golden orange. Deepest color of all. 15c each, 3 for 40c, 12 for \$1.10, 50 for \$4.00.

**BUNCH FLOWERED NARCISSUS**

**Grand Soleil d'Or**—Perianth golden, cup deep brilliant orange. Early and very showy. 10c each, 3 for 25c, 12 for 90c, 50 for \$3.25.

**Paper White Grandiflora**—Snowy white, with large trusses of flowers. 10c each, 3 for 25c, 12 for 75c, 50 for \$2.75.

**Frans Hals**—Creamy white perianth, yellow cup. Free flowering. 10c each, 3 for 25c, 12 for 90c, 50 for \$3.25.

**POETICUS NARCISSUS**

**Horace**—White perianth, with flat eye, yellow edged red. 15c each, 3 for 40c, 12 for \$1.10, 50 for \$4.00.

**DOUBLE NARCISSUS**

**Snowsprite**—A beautiful gardenia-flowered daffodil. Crispy pure white. Late. 40c each, 3 for \$1.00, 12 for \$3.50.

**SPECIAL COLLECTION**—One bulb each variety (excepting Tunis), labeled (22 varieties) for \$3.25.

Three bulbs each variety (excepting Tunis), labeled, \$9.00.



# CARL SALBACH

ORDER NUMBER

ORIGINATOR AND GROWER

GLADIOLUS, IRIS, DAHLIAS AND DAHLIA SEED

DATE OF SHIPMENT

SELECTED SEED SPECIALTIES

657 WOODMONT AVENUE  
BERKELEY, CALIF.

PACKED BY

PHONE  
AS HBERRY 1066

\_\_\_\_\_, 193\_\_\_\_

NAME \_\_\_\_\_

STREET \_\_\_\_\_

CITY AND  
STATE \_\_\_\_\_

NON-WARRANTY: I GIVE NO WARRANTY, EXPRESS OR IMPLIED AS TO DESCRIPTION, QUALITY, PRODUCTIVENESS, OR ANY OTHER MATTER OF SEEDS, BULBS, RHIZOMES OR PLANTS SENT OUT BY ME, AND WILL NOT BE RESPONSIBLE IN ANY WAY FOR THE CROP. IF THE PURCHASER DOES NOT ACCEPT THE GOODS ON THESE TERMS NO SALE THEREOF IS MADE AND PURCHASER MUST RETURN THEM AT ONCE, AND MONEY WILL BE REFUNDED.

**CALIFORNIA RESIDENTS: Add 2½% to cover Sales Tax, except on goods delivered outside California.**

QUANTITY	NAME OF VARIETY	AMOUNT	

OVER

MAY WE SUBSTITUTE, IF OUT OF STOCK?.....

OVER

DO NOT WRITE HERE

ORDER NUMBER

QUANTITY	NAME OF VARIETY	AMOUNT	

MAY WE SUBSTITUTE IF OUT OF STOCK?.....

## HOW TO ORDER

PLEASE READ CAREFULLY BEFORE ORDERING

**Order Early**—Early orders are solicited to prevent disappointments in case the variety selected should be sold out.

Please write your *name and address* plainly.

**Shipping** time for iris is from June 1 to October 1, to suit customers' convenience and proper planting time.

The **stock** we ship is all first quality and rhizomes are of blooming size. Because of our long rainless summers and our well-drained hillside gardens, the plants are well matured before shipping time.

**Substitutions**—We do not substitute unless directed to do so. If late in the season, we suggest that you indicate a second choice.

**Terms**—Remittance should accompany order unless shipment is to be sent C.O.D. or satisfactory credit references are given. Remit by Postal Money Order from Canada and other foreign countries. 25% deposit will hold bulbs till shipping time, when they will be sent C.O.D. for balance unless otherwise arranged.

**Postage**—Seed orders of any amount sent postpaid. On bulb orders or combination seed and bulb orders of less than \$1.00, add 25c for packing and postage. All retail orders amounting to \$1.00 or over will be delivered free to all points reached by regular Parcel Post.

**Sales Tax**—Add 2½% to cover tax on all goods delivered in California. All sales delivered to other states not subject to tax.

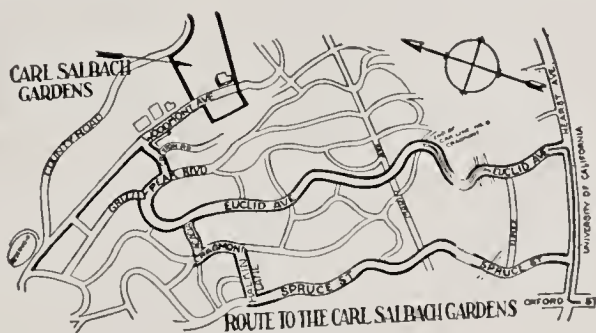
**Non-Warranty**—We give no warranty, express or implied, as to description, quality, productiveness, or any other matter of seeds, bulbs, rhizomes or plants sent out by us and will not be responsible in any way for the crop. If the purchaser does not accept the goods on these terms no sale thereof is made and purchaser must return them at once, and money will be refunded.

**References**—For our business standing, please refer to *Bank of America National Trust and Savings Association; American Trust Co., Berkeley, Calif.; Farmers and Merchants Savings Bank, Oakland, California.*

### THE LATCH STRING IS ALWAYS OUT

Our gladiolus bloom from June to October; dahlias July to November; iris April and May.

Follow scenic Euclid Ave., keeping to the right on Grizzly Peak Boulevard (a continuation of Euclid Ave.), turning to the left onto Creston Road. Follow our garden signs. We are just one mile from the end of the No. 4 Cragmont line.



CARL SALBACH

657 WOODMONT AVE.

BERKELEY, CALIF., U. S. A.

Phone AShberry 1066



### SIR MICHAEL

*Our color reproductions are the finest that can be made; comparisons at blooming time have shown them to be meticulously exact. To this we except Sir Michael, above, which does not do justice to the flower.*