

## **Historic, Archive Document**

Do not assume content reflects current scientific knowledge, policies, or practices.



68.61

129.



*MORE FROM YOUR  
LAND*

HICKS NURSERIES  
Westbury, L.I. N.Y.

**G***ROW* more fruit. It's fun to show your neighbors and win prizes at the fair. Anything you want to know particularly, we'll tell you or refer you to better authorities.

*Enjoy the companionship of your favorite flowers, roses and shrubs.*

*Have plenty of cool shade to rest in and to share with your friends.*

*Your landscape can be and should be beautiful and useful in every direction.*

*Make it so this Fall. We are always ready to cooperate.*

*Anything you buy from this catalogue is guaranteed to grow satisfactorily or replaced free.*

*A nominal charge will be made for packing or delivery in addition to prices quoted herein.*



**PEACHES** with cream. You will wish all the world were as happy as you. A space 10x10 is plenty for a Peach tree. Count your spaces and order your trees. All good home varieties, selected for juice and flavor. No reason in the world for not growing bushels and bushels of the finest Peaches you ever ate. Fruit the second summer.

- ✓ **Carmen.** Large; white; juicy. July.
- ✓ **Belle of Georgia.** Large; white; delicious. August.
- ✓ **Champion.** One of the best white. August.
- ✓ **Mountain Rose.** White; prolific. August.
- ✓ **Elberta.** Large; yellow; juicy. August and September.
- ✓ **Crawford's Early.** Large; yellow. September.
- ✓ **Oldmixon.** White; excellent for canning. September.
- ✓ **Crawford's Late.** Large; yellow; red at the stone. September.
- ✓ **Stump of the World.** White; juicy and highly flavored. Late September.
- ✓ **Chair's Choice.** Large; yellow; firm, good quality.
- ✓ **Globe.** Large; yellow; sweet and delicious. Late September.
- ✓ **Stevens' Rareripe.** Large; red skin; flesh white. October.

\$1.00 each; \$7.50 per 10; \$50.00 per 100.

Guaranteed to grow satisfactorily  
or replaced free.



**S**TRAWBERRIES. Fresh ones and plenty of them. Maybe you have never eaten this kind? That's because that little 4x30 feet space in your back yard has always gone to weeds instead of berries. That will never happen again because now you know it is as easy to produce food as it is to grow weeds. Muleh for Winter.

The latest method of growing strawberries is in rows 2 feet apart, plants 4 inches apart. Cut off all runners. Frequent cultivation will eliminate most of them.

**Clyde.** Very productive. Immense size. Early.

**Glen Mary.** Long, tapering fruit of sweet flavor.

**Wm. Belt.** Remarkably productive. Very large. Mid-season.

**Beal.** A new variety. Try it.

**Chesapeake.** Excellent under high culture.

**Sample.** Large, late and prolific. Bright red.

**Marshall.** Noted for flavor rather than production.

**Gandy.** One of the latest in cultivation.

**Nick Ohmer.** Extra large. Excellent flavor.

**Progressive Everbearing.** Bears all summer.

Strong Potted Plants, \$6.00 per 100

Strawberries planted in the Fall will be full of berries in June. Keep out the weeds and the fruit is bound to come.



**A**PPLES. The Apple has made pie immortal and the doctor a non-essential—if legend is true. If you have a 25-foot space you have room for an Apple. Apples from which the juice runs down your chin and the aroma thrills the nostrils

- \***Yellow Transparent.** Earliest; yellow; acid. July.
- \***Red Astrachan.** Red; sour. Excellent. August.
- \***Duchess of Oldenburg.** Yellow, streaked. Bears young. August.
- \***Gravenstein.** Yellow, streaked. August and September.
- \***Fall Pippin.** Yellow; acid. October and November.
- \***McIntosh.** Red; acid. September.
- \***Newtown Pippin.** Green; delicious. Jan. May.
- \***Spitzenburg.** Red; spicy. Good keeper.
- \***R. I. Greening.** Rich, sub-acid. Dec.
- \***Baldwin.** Red. Winter.
- \***Transcendent (Crab).** For jelly. Sept.

5-7 ft. high \$1.00 each; \$7.50 per 10  
 8-10 ft. high \$6.00 each; 50.00 per 10  
 Write about older specimens.

\* Also dwarf. 12 ft. space.



Plant an Apple for its blossoms, plant for fruit, plant for shade, plant for the birds to nest in, plant for the children to climb.



## SMALL FRUITS.

Delicious whether eaten fresh, or stewed or preserved, or in pies or jam, or served in any other way. And you can have them all in your own backyard.

### CURRANTS

A sure crop the first year. Ten bushes will be enough for a small family. Plant 3 ft. apart. 50c. each; \$4.00 per 10.

**Cherry.** Dark red; acid. Fine for jelly.  
**Fay's Prolific.** Red; large, long bunch.  
**White Grape.** White; excellent; sweet.

### GOOSEBERRIES

Synonym for the tastiest jam known. They bear the first year too. Plant 3 ft. apart. 50c. each; \$4.00 per 10.

**Industry.** Large; dark red; productive.  
**Downing.** Medium; green; productive.

### RASPBERRIES

You can't buy fresh ones. You can grow them. In fact they grow themselves along the back fence or almost anywhere. Don't plant less than fifty. One hundred is better. \$1.00 per 10; \$6.00 per 100.

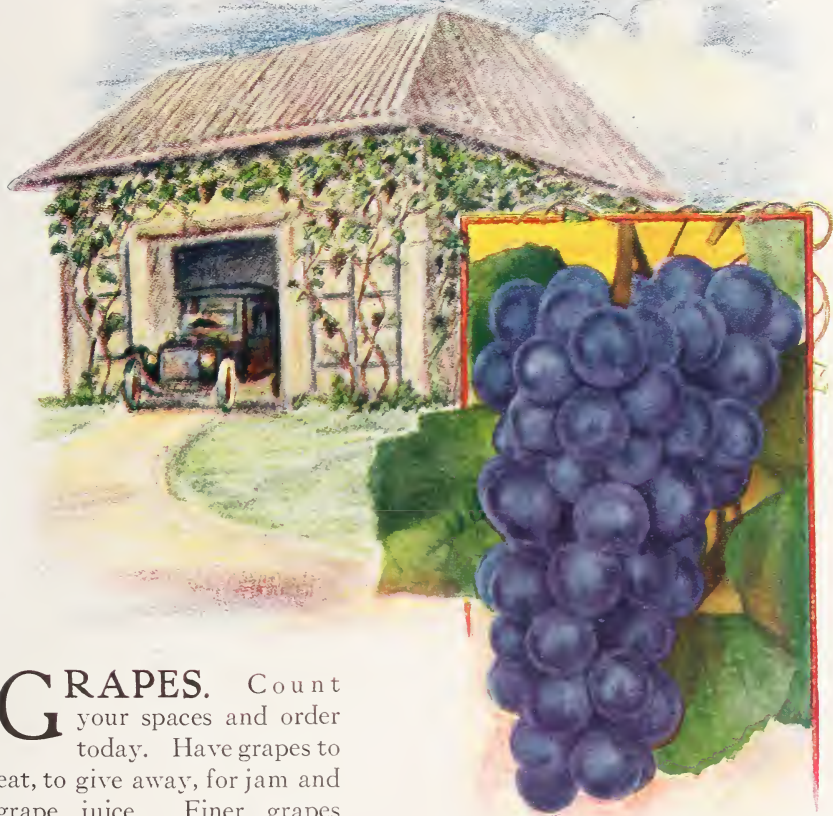
**Cuthbert.** Large; red; delicious; midseason.  
**Golden Queen.** Yellow; juicy, sweet.  
**Gregg.** Large; black; sweet, rich; late.  
**Herbert.** Large; red  
**St. Regis.** Bears the first season continuing until frost. Red.

### BLACKBERRIES

Jelly and jam and pie and—all right we'll send you 50 or 100 plants. \$1.00 per 10; \$6.00 per 100.

**Early Harvest.** Good quality; prolific.  
**Snyder.** Medium size; good flavor.  
**Blowers.** Heavy yield; long season.





**G**RAPES. Count your spaces and order today. Have grapes to eat, to give away, for jam and grape juice. Finer grapes never grew than will grow in abundance right in your own backyard. Sweet, juicy, delightful, and so easy. Why, the hardest part is making yourself realize it is so easy. Plant 8 ft. apart. Bear first or second Summer.

- Concord.** Blue-black; sweet; productive.
- Salem.** Red; large berry; sweet.
- Niagara.** Pale yellow; sweet; productive.
- Delaware.** Small; red; sweet; aromatic.
- Moore's Early.** Large; black; good flavor.
- Moore's Diamond.** Large; white; juicy.
- Pocklington.** Golden; juicy; sweet.
- Worden.** Large; black; sweet; early.

50c. each; \$4.00 per 10.

Guaranteed to grow satisfactorily or replaced free.





**PEARS.** Get out your props to keep the limbs from breaking under their luscious load. Order a supply of jars too for you won't be able, even with little Willie's capacity, to eat all the Bartlett's and the Seckels and Boscs. And nowadays we preserve what we can't eat at once. Seven pears, a pint of water and ½ cup sugar gives the biggest jar of satisfaction you can get in the fruit line. Open a jar for your guests.

### PEARS

- Clapp's Favorite.** Yellow, red cheek; valuable. August.
- \***Bartlett.** Yellow, red cheek. August and September.
- Sheldon.** Russet; coarse; fine flavor. September and October.
- \***Seckel.** Brown; sweet and juicy. September and October.
- \***Duchesse d'Angouleme.** Yellow; large; buttery. October and November.
- Anjou.** Green and russet; rich. October and November.
- Buerre Bosc.** Golden brown. The best. October to December.
- Winter Nellis.** Russet; rich, sprightly. November and December.

\* Also dwarf. 8 feet space. Standard trees, 15-20 feet space.

### PLUMS

- †**Abundance.** Yellow, covered with red; productive. August.
- †**Apple.** Reddish purple; finest flavor. Late August.
- †**Burbank.** Yellow, red cheek. Rich and sugary. Late August.
- †**Wickson.** Maroon-red; firm; good quality.
- †**October Purple.** Reddish purple; late; good quality.
- German Prune.** Purple; sweet.
- Green Gage.** Green; sweet and rich. Mid-season.
- Lombard.** Dark red; pleasant, but not rich; productive.
- Bradshaw.** Reddish purple; juicy and good.

† Japanese plums. Bear larger crops but not so high quality. Try some of each.

\$1.00 each; \$7.50 per 10. Guarantee to grow satisfactorily or replaced free

# C

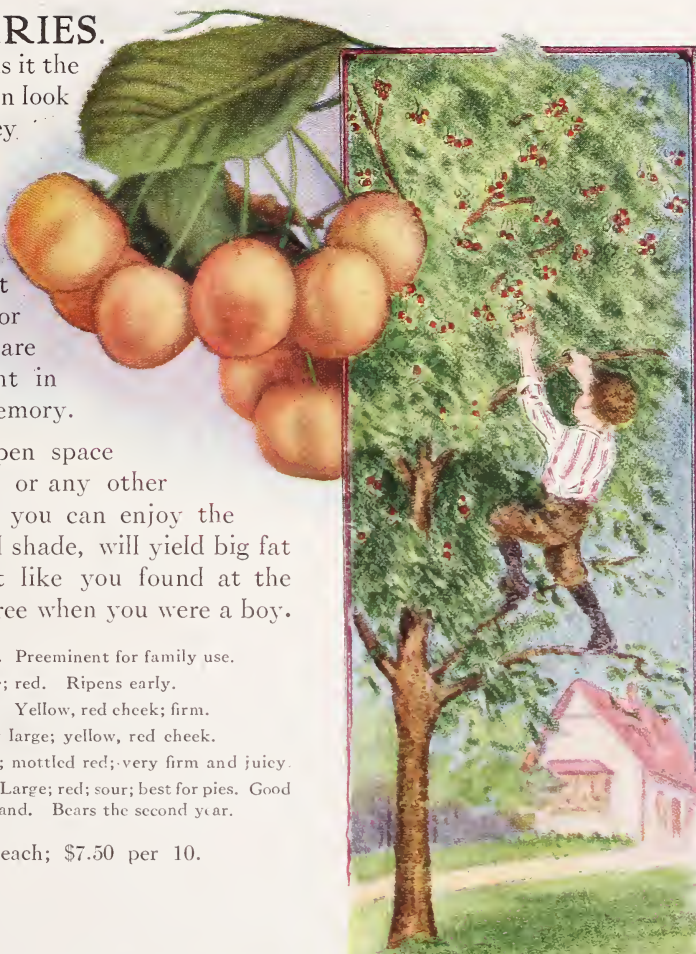
## HERRIES.

What is it the children look for when they go to grand-ma's in the country? It may be, those cherries, right off the tree or preserved, are still a delight in your own memory.

A little open space on the lawn or any other place, where you can enjoy the blossoms and shade, will yield big fat cherries, just like you found at the top of the tree when you were a boy.

- Black Tartarian.** Preeminent for family use.
- Rockport.** Large; red. Ripens early.
- Yellow Spanish.** Yellow, red cheek; firm.
- Napoleon.** Very large; yellow, red cheek.
- Windsor.** Large; mottled red; very firm and juicy.
- Montmorency.** Large; red; sour; best for pies. Good to eat out of hand. Bears the second year.

\$1.00 each; \$7.50 per 10.



## PLUMS

A handsome tree for lawn or garden. Beautiful in bloom, rich in fruit. See opposite page.

**SHADE.** Everybody wants it. Everybody can have it. Everybody ought to have it. It will help keep the children out in the fresh air. It is delightful to play in or to rest in. It is refreshing for your family and guests. "There is always a cool breeze under the trees" and what an improvement they make in the appearance of a home too. The bare look is taken away, the house is nicely framed. No wonder Hicks trees always become the pride of the place. Phone Westbury 68, for cost of delivery and planting.

**NORWAY MAPLE**

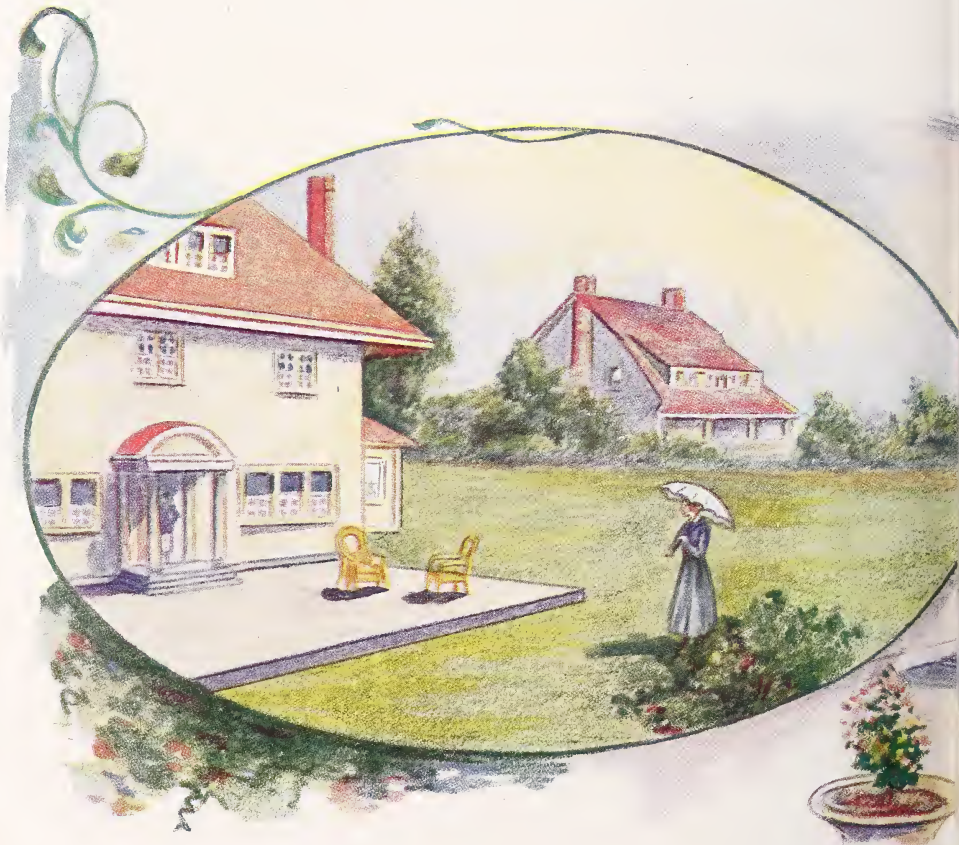
	Each	Per-10
16-20 ft., 4 in., 8-10 ft. spr.	\$30.00	\$225.00
18-24 ft., 5 in., 10-14 ft. spr.	45.00	425.00
18-26 ft., 6 in., 10-14 ft. spr.	60.00	575.00
22-26 ft., 7 in., 12-18 ft. spr.	80.00	700.00
23-30 ft., 8 in., 14-18 ft. spr.	90.00	850.00
24-26 ft., 9 in., 16-20 ft. spr.	100.00	
26-28 ft., 10 in., 16-20 ft. spr.	110.00	
26-30 ft., 11 in., 18-22 ft. spr.	125.00	

**RED OR SCARLET MAPLE**

	Each	Per 10
20-26 ft., 6 in., 12-15 ft. spr.	\$60.00	\$600.00
20-30 ft., 7 in., 14-16 ft. spr.	80.00	800.00
22-32 ft., 8 in., 14-18 ft. spr.	90.00	900.00
28-32 ft., 10-12 in., 14-18 ft. spr.	120.00	1200.00

**LINDEN**

	Each	Per 10
18 ft., 4 in., 6-9 ft. spr.	\$35.00	\$300.00
20 ft., 5 in., 9-12 ft. spr.	65.00	600.00
22 ft., 6 in., 10-12 ft. spr.	75.00	750.00
24 ft., 7 in., 10-12 ft. spr.	90.00	900.00
24 ft., 8 in., 12-14 ft. spr.	100.00	1000.00



All the beneficence of big trees is yours without waiting. Mature trees, trees that save you ten, fifteen or even twenty years.

“Perfectly wonderful. We never dreamed of such a quantity of large nursery grown trees. It must have taken a lifetime to grow them, and to think they are guaranteed too.”

The fact that of 1,250 large trees, supplied from the nursery, only 75 have failed (mostly for lack of watering), shows that the possibility of disappointment is very slight. The risk is ours—the enjoyment is yours. Motor truck deliveries up to 100 miles.

PIN OAK		ELM			
	Each	Per 10			
16-20 ft., 4 in., 8-9 ft. spr.	\$25.00	\$200.00	20 ft., 4 in., 5-8 ft. spr.	\$30.00	\$250.00
18-20 ft., 5 in., 9-10 ft. spr.	40.00	350.00	22 ft., 5 in., 7-10 ft. spr.	45.00	400.00
22-24 ft., 5½ in., 9-12 ft. spr.	55.00	500.00	24-26 ft., 6 in., 7-10 ft. spr.	60.00	550.00
18-22 ft., 6-7 in., 12 ft. spr.	70.00				

Ask about larger trees if interested.





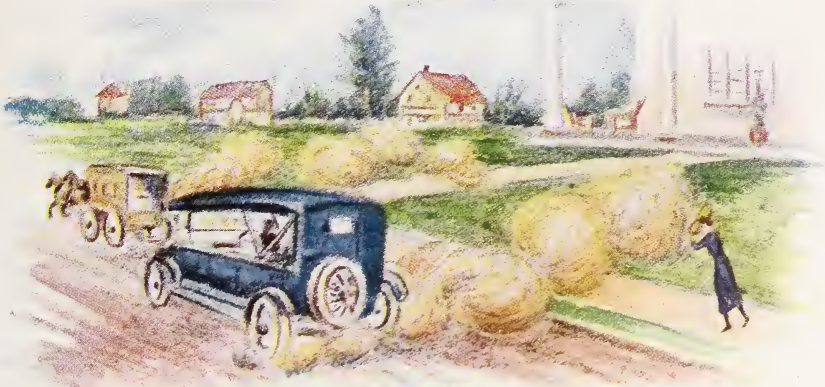
**W**HETHER you want trees to look at or to use, here they are at negligible cost. It does seem like a dream, but you know sometimes dreams come true. Every tree a beauty backed by our guarantee. You can take off your collar, lean back in the old arm chair or stretch out on the grass and enjoy yourself.

NORWAY MAPLE		Each	Per 10	LINDEN		Each	Per 10
8 ft. high.....		\$1.00	\$9.00	10 ft. high, 1½ in. diam.....		\$3.50	\$30.00
10 ft. high, 1½ in. diam.....	2.00		17.50	10 ft. high, 2 in. diam.....		5.00	40.00
12 ft. high, 2 in. diam.....	3.00		27.50	12 ft. high, 2½ in. diam.....		10.00	90.00
14 ft. high, 2½ in. diam.....	4.00		35.00	PIN OAK			
18 ft. high, 3 in. diam.....	10.00		90.00	10 ft. high, 1½ in. diam.....	\$2.00	\$17.50	
				12 ft. high, 2 in. diam.....	3.50	32.50	
				14 ft. high, 2½ in. diam.....	8.00	70.00	
				18 ft. high, 3 in. diam.....	15.00	120.00	
BALSAM POPLAR				ELM			
8-10 ft. high.....	\$1.00	\$7.50		14 ft. high, 2½ in. diam., 4-6 ft. spr.	\$5.00	\$45.00	
10-12 ft. high.....	1.50	12.50		16 ft. high, 3 in. diam., 5-7 ft. spr.	8.00	75.00	

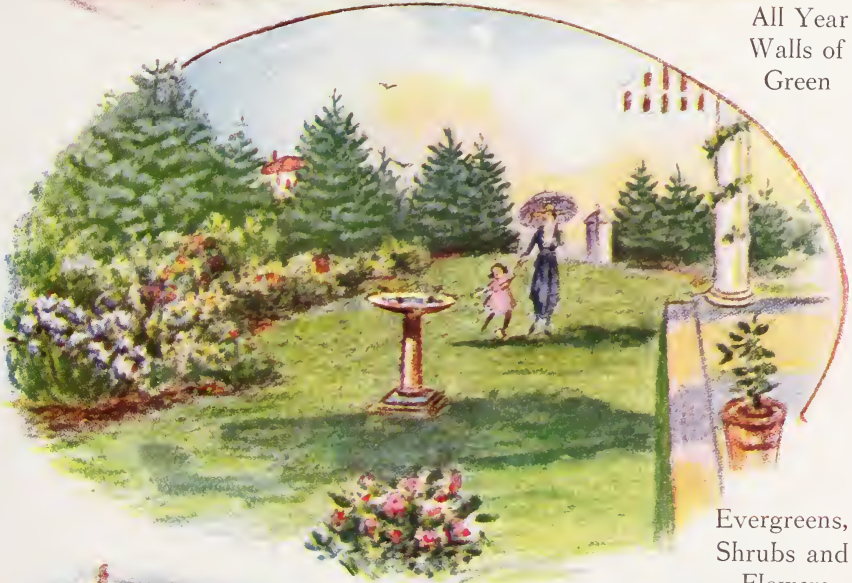
## LIVE CHRISTMAS TREES

Order a tree in a box for \$4.00 to \$16.00, and plant it after Christmas. You can plant trees nearly all Winter if you mulch the ground to keep out frost. There are a number of things we can help you do next Winter and not next April. You have the Winter. We'll help you use it.

NOISE AND DUST IN SUMMER



All Year  
Walls of  
Green



Evergreens,  
Shrubs and  
Flowers



COLD WIND IN WINTER

# EVERGREENS FOR ALL YEAR SCREENS WALLS OF GREEN *and* DECORATIVE GROUPS

## WHITE PINE Each Per 10

4 ft. high, 2-3 ft. spr.	\$1.75	\$15.00
5 ft. high, 2-4 ft. spr.	2.75	25.00
6 ft. high, 3-4 ft. spr., 7 yrs.	6.00	50.00
7 ft. high, 4-6 ft. spr., 8 yrs.	10.00	90.00
8 ft. high, 4-6 ft. spr., 9 yrs.	12.00	100.00
9 ft. high, 7 ft. spr., 10 yrs.	14.00	120.00
10 ft. high, 6-7 ft. spr., 11 yrs.	18.00	160.00
12 ft. high, 8-10 ft. spr., 13 yrs.	30.00	250.00
14 ft. high, 8-10 ft. spr., 15 yrs.	40.00	350.00
16 ft. high, 10-12 ft. spr., 17 yrs.	60.00	

## OTHER PINES

We have a large stock, suited to the shore and sandy hillside. Varieties include Scotch, Red, Jack.

Describe your conditions and we will give trees that fit.

3 ft. high	\$2.00	\$17.50
4 ft. high	4.00	35.00
5 ft. high	6.00	50.00
6 ft. high	8.00	70.00

## KOSTER'S COLORADO BLUE SPRUCE

4 ft. high, 2½-4 ft. spr.	\$5.00	\$45.00
5 ft. high, 3-4 ft. spr.	8.00	75.00
6 ft. high, 3-4 ft. spr.	11.00	100.00
7 ft. high, 4-5 ft. spr.	15.00	125.00
8 ft. high, 4-5 ft. spr.	20.00	175.00

## DOUGLAS SPRUCE

One of the best all around species.

	Each	Per 10
3 ft. high	\$1.50	\$12.50
4 ft. high, 3 ft. spr.	2.50	20.00
5 ft. high, 3 ft. spr.	3.50	30.00
6 ft. high, 3-4 ft. spr.	6.00	50.00
8 ft. high, 4-5 ft. spr.	10.00	90.00
9 ft. high, 4-5 ft. spr.	15.00	140.00
10 ft. high, 4-6 ft. spr.	20.00	190.00
12 ft. high, 4-8 ft. spr.	30.00	290.00

## FIRS

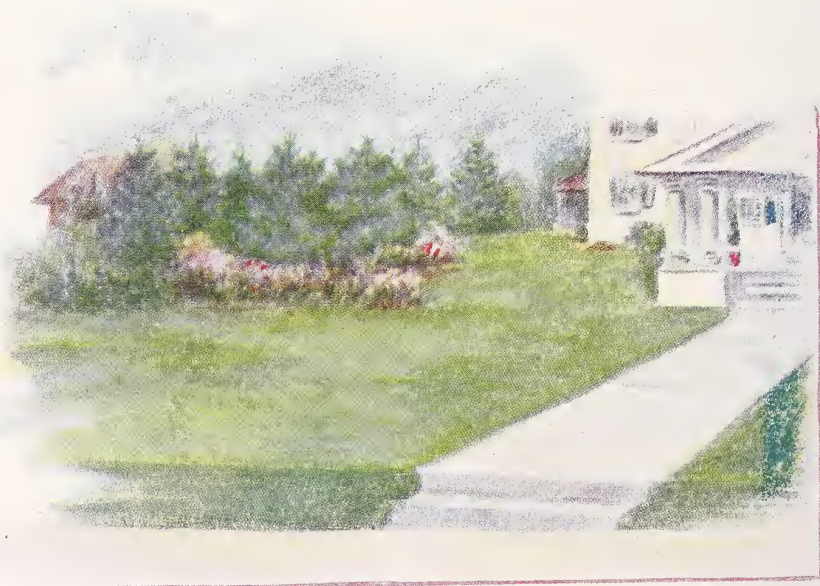
Handsome dark, green pyramids. Varieties include Veitch's, Nikko and Nordmann.

3 ft. high	\$3.00	\$27.50
4 ft. high, 3-4 ft. spr.	5.00	45.00
5 ft. high, 4-5 ft. spr.	7.00	65.00
6 ft. high, 4-5 ft. spr.	10.00	90.00
7 ft. high, 5-7 ft. spr.	12.00	110.00
8 ft. high, 5-7 ft. spr.	16.00	150.00
9 ft. high, 5-8 ft. spr.	25.00	240.00

## CONCOLOR OR WHITE FIR

3 ft. high	\$4.00	\$35.00
4 ft. high	6.00	50.00
5 ft. high	9.00	80.00
6 ft. high	15.00	140.00
7 ft. high, 4-5 ft. spr.	22.00	200.00

If you wish to plant a screen to garage, or curtain off the highway or adjacent property, and need advice regarding the kind of trees to use, the quantity and arrangement, we can assist you materially if you will indicate your problem on the cross section paper sent with this catalogue. We do not care how crude the sketch may be.



Not a mar in the landscape, when you have used Hicks Evergreens. Whether you wish one tree or a carload makes no difference. We have them by the acre. Large trees if you wish a sudden transformation. Smaller trees if immediate service is not imperative. Every one sound, symmetrical and guaranteed.





“ISN'T that a pretty place?” That is what you hear the passers-by say frequently when you have one of our attractive foundation plantings. If you wish to add this touch of refined beauty, send us or bring photo and we will think up a pretty effect, and give you a sketch that you can follow. Cost \$10. to \$50. complete according to planting area.

The cross section paper enclosed will be very convenient for you to indicate dimensions.

<b>JAPANESE YEW</b>	
Dark green, handsome.	Each Per 10
1 ft. high.....	\$1.50 \$10.00
1½ ft. high.....	3.00 20.00
2 ft. high.....	4.00 30.00
3 ft. high.....	6.00 35.00

<b>FLAT JAPANESE YEW</b>	
1½ ft. high, 1½ ft. wide.....	\$2.00 \$15.00
2 ft. high, 2 ft. wide.....	3.50 30.00

<b>MUGHO PINE</b>	
1½ ft. wide, 1½ ft. high.....	\$2.50 \$20.00

<b>JUNIPER, Low-growing</b>	
1 ft. wide.....	\$0.75 \$6.00

<b>RHODODENDRONS</b>	
Plant 2 ft. apart. Dig in leaves.	
1½ ft. high.....	\$2.50 \$20.00
2 ft. high.....	3.50 30.00

<b>LAUREL</b>	
2 ft. high.....	\$1.50 \$12.50

<b>EUONYMOUS Evergreen. Bittersweet</b>	
Plant between trees as ground cover, or to grow up walls. Hardier than English Ivy.	
1 ft.....	\$0.30 \$2.50

For Foundation Plantings and other low masses, plant about 3 ft. apart. Trees can be arranged artistically before planting.

<b>RED CEDAR</b>	
For the taller effects in your planting.	Each Per 10
4 ft. high.....	\$2.00 \$17.50
5 ft. high.....	3.50 30.00
6 ft. high.....	5.00 45.00
7 ft. high.....	6.00 55.00
8 ft. high.....	9.00 80.00

<b>CYPRESS, Japanese</b>	
Pretty tufts of Blue, Green and Yellow.	
1½ ft. high.....	\$1.25 \$10.00
2 ft. high.....	2.00 15.00

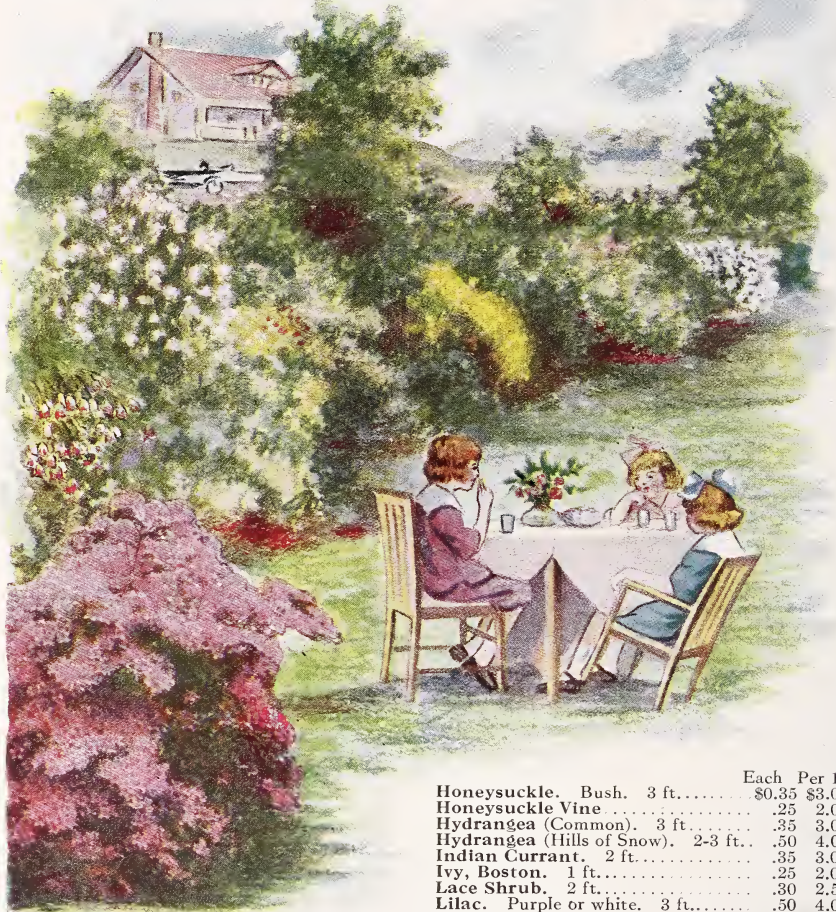
<b>ARBOR VITÆ, American</b>	
5 ft. high.....	\$5.00 \$45.00

<b>PACHYSANDRA, Japanese Spurge</b>	
The popular ground cover. Makes a carpet 8-12 in. high. \$1.50 per 10; \$10.00 per 100; \$90.00 per 1000.	

<b>JAPANESE BARBERRY</b>	
Red berries all Winter.	Each 10 100
1½ ft. high.....	\$0.25 \$2.00 \$18.00

# SHRUBBERY and VINES

BEAUTIFUL TO THE EYE  
SWEET TO SMELL  
PLEASANT IN THE MEMORY



	Each	Per 10
Althea (Rose of Sharon). 3 ft. ....	\$0.50	\$4.00
Apple, Flowering. Pink, red. 3 ft. . . . .	.75	6.00
Barberry, Japanese. 1½ ft. (\$18. per 100) . . . . .	.25	2.00
Cherry, Flowering Japanese. 8 ft. . . . .	2.50	20.00
Clematis, Japanese Vine. White. . . . .	.50	4.00
Deutzia crenata. 3 ft. . . . .	.35	3.00
Deutzia, Dwarf. 1 ft. . . . .	.30	2.50
Dogwood. Red flowering. 4 ft. . . . .	2.00	17.50
Dogwood. White flowering. 6 ft. . . . .	1.00	8.50
Euonymus Vine. Evergreen. 6-12in. . . . .	.30	2.50
Forsythia. Golden Bell. 3 ft. . . . .	.35	3.00
Golden Wreath Tree. 4 ft. . . . .	.50	4.50

	Each	Per 10
Honeysuckle. Bush. 3 ft. . . . .	\$0.35	\$3.00
Honeysuckle Vine . . . . .	.25	2.00
Hydrangea (Common). 3 ft. . . . .	.35	3.00
Hydrangea (Hills of Snow). 2-3 ft. . . . .	.50	4.00
Indian Currant. 2 ft. . . . .	.35	3.00
Ivy, Boston. 1 ft. . . . .	.25	2.00
Lace Shrub. 2 ft. . . . .	.30	2.50
Lilac. Purple or white. 3 ft. . . . .	.50	4.00
Maple. Tartarian bush. 3 ft. . . . .	.60	5.00
Magnolia. Pink, white, red. 4 ft. . . . .	5.00	45.00
Pearl Bush. 3 ft. (Rare) . . . . .	.50	4.00
Privet, California. 3 ft. (\$6.00 per 100). For hedge, 1 ft. apart. . . . .		1.00
Privet, Regels. Hardy all over U. S. 2 ft. . . . .	.25	2.00
Quince, Japanese. 3 ft. . . . .	.35	3.00
Snowball, Japanese. 3 ft. . . . .	.50	4.00
Snowberry. An old favorite. 2 ft. . . . .	.30	2.50
Spiræa. Low, white or red. 1½ ft. . . . .	.35	3.00
Spiræa. Bridal wreath. 3 ft. . . . .	.35	3.00
Spiræa. Van Houttei. 3 ft. . . . .	.35	3.00
Styrax (Like Orange Blossoms). 4 ft. . . . .	1.00	7.50
Sweet-Scented Shrub. 3 ft. . . . .	.40	3.50
Syringa. Mock Orange. 3 ft. . . . .	.35	3.00
Weigela. Pink, white, red. 3 ft. . . . .	.40	3.50
Wisteria. Purple, white. 3 ft. . . . .	.50	4.00

If you need our cooperation in planning a shrub boundary or screen, indicate on the cross section paper enclosed the area to be covered, and tell us what your favorites are so we can weave them in. For extra size time-saving shrubs, send for list.

For berry bearing shrubs, see page 16.

**FLOWERS** you have always loved. Pick them by the armful. Rare shades too that fill the garden with such splendor all Summer long. Guaranteed? Certainly. Take along in your auto or we can ship. Flower gardens planted in the Fall, look like grandmother's garden in the Spring.

	Each	10	100
Alyssum, Yellow.....	\$0.15	\$1.25	\$15.00
Asters, Hardy.....	.20	1.75	15.00
Butterfly Weed.....	.20	1.75	15.00
Campanula.....	.20	1.75	15.00
Chrysanthemum.....	.20	1.75	15.00
Columbine.....	.20	1.75	15.00
Day Lily (Funkia).....	.25	2.00	15.00
Foxglove.....	.20	1.75	15.00
Gaillardia (Blanket Flower).....	.20	1.75	15.00
Golden Glow.....	.20	1.75	15.00
Hardy Sunflower.....	.20	1.75	15.00
Hemerocallis.....	.20	1.75	15.00
Hollyhock.....	.20	1.75	15.00
Iris, German.....	.20	1.75	15.00
Iris, Pumila. Dwarf.....	.20	1.75	15.00
June Pink.....	.20	1.75	15.00
Larkspur.....	.20	1.75	15.00
Lupine.....	.25	2.00	15.00
Mallow.....	.20	1.75	15.00
Monarda.....	.20	1.75	15.00
Moss Pink.....	.20	1.75	15.00

	Each	10	100
Peony.....	\$0.50	\$4.50	\$15.00
Platycodon.....	.20	1.75	15.00
Poppy.....	.20	1.75	15.00
Salvia. Light and Dark Blue.....	.20	1.75	15.00
Young's Evening Primrose.....	.20	1.75	15.00

## PHLOX

	Each	10
Independence. White.....	\$0.15	\$1.25
R. P. Struthers. to Red bronze-red.....	.20	1.75
Geo. A. Strohlein. Scarlet and orange-red.....	.25	2.00
Matador. Orange-red, cherry eye.....	.20	1.75
Beranger. Dwarf, red eye. Pink.....	.20	1.75
L'Evenement. Salmon-pink.....	.15	1.25
Lumineaux. Salmon-pink.....	.20	1.75
L'Esperance. Lavender-pink.....	.20	1.75





## BRIGHT BERRIED SHRUBS for BIRDS and BEAUTY

	Fruit	Season	Each	10
Arrowwood.....	Blue...	Fall....	\$0.40	\$3.50
Apple, Flowering...	Red...	Winter..	.75	6.00
Barberry.....	Scarlet.	Winter..	.25	2.00
Bittersweet.....	Scarlet.	Winter..	.30	2.50
Blackhaw.....	Black..	Winter..	.30	2.50
Black Alder.....	Scarlet.	Winter..	.30	2.50
Cherry, Wild.....	Black..	Summer	.50	4.50
<b>Chinese Christmas</b>				
Berry.....	Red...	Winter..	.50	4.00
Chokeberry.....	Red...	Winter..	.40	3.50
Coral Berry.....	Red...	Fall....	.35	3.00
Cornelian Cherry...	Red...	Fall....	.35	3.00
<b>Cranberry, High</b>				
Bush.....	Red...	Winter..	.35	3.00
Dogwood, Panicled	Pearl..	Fall....	.25	2.00
<b>Dogwood, Red</b>				
Twigged.....	Blue...	Fall....	.35	3.00
Dogwood, Japanese.	Red...	Fall....	.60	5.00
Elder, Common.....	Black..	Summer	.50	4.00
<b>Euonymus, Cork</b>				
Barked.....	Red...	Fall....	1.00	7.50
Honeysuckle, Bush.	Red...	Summer	.35	3.00
Privet, Regel's.....	Black..	Winter..	.25	2.00
Sheepberry.....	Black..	Fall....	.30	2.50
Snowberry.....	White..	Fall....	.30	2.50
Spice Bush.....	Red...	Fall....	.30	2.50
Sumac.....	Red...	Fall....	.35	3.00
Thorn, Jap Silver..	Red...	Fall....	.30	2.50
Thorn, Cock Spur..	Red...	Fall....	.50	4.50
Viburnum Sieboldi	Red...	Fall....	.60	5.00
Witherod.....	Blue...	Fall....	.40	3.00

No. 1 Japanese Barberry. The birds feed on the berries in the Spring.

No. 2 Japanese Dogwood. Flowers as conspicuous as our native Dogwood.

No. 3 Arrowwood. Sure to be on the birds' Fall bill of fare.

No. 4 Chinese Christmas Berry. As sparkling as the eyes of the birds they attract.

No. 5 Japanese Silver Thorn. The birds and children are both fond of the berries.

No. 6 High Bush Cranberry. Exceedingly showy all Winter.

No. 7 Black Alder. The birds can see this a good ways off.

No. 8 Bush Honeysuckle. Watch the birds feast on them in August.

50 plants of the above, 1½ ft. high, \$10.00 100 plants, \$19.00.

Special collections of above, ¼ ft., \$20.00 per 100. Just the thing for thickets, game preserves.

# More from Your Land

---



**U**SE the inside pages of this folder to make a rough sketch. We may recommend re-arranging the ground plan to increase the vegetable garden. Perhaps you can re-locate the laundry yard and avoid odd corners that produce nothing. Photographs of your house, and views looking out from the house at various directions will help.

Tell us if they are old trees occupying large areas with their roots. Sketch some things in cross section or perspective.

Tell us where you are and we will probably know about the soil and what is being done in your neighborhood.

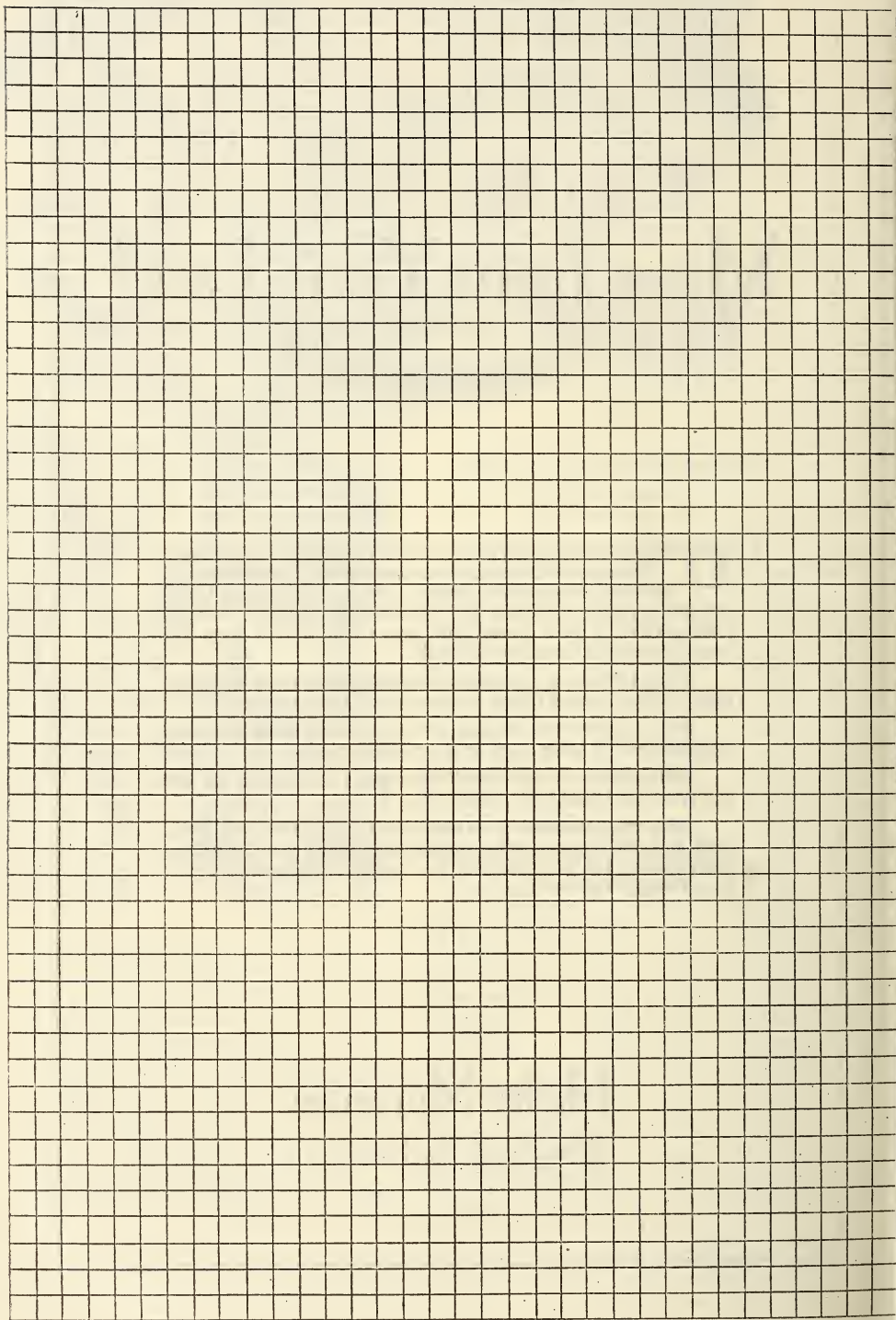
Tell your boy or girl that if they make the sketch we will add free some fruit trees or flowers.

With this information we can more readily grasp your problems and conditions; advise you in reference to your landscape possibilities; tell you what and how many plants you can use to advantage and the cost.

Hicks Nurseries  
Westbury, L. I., N. Y.

# JUST A ROUGH PENCIL SKETCH WILL DO

*Each square represents.....feet    My house faces.....(N. E. S. W.)*



Don't forget to tell us what your favorite trees, fruits and flowers are. The chances are you can have them all.

A large grid of graph paper, consisting of 20 columns and 30 rows of small squares, intended for drawing or writing.

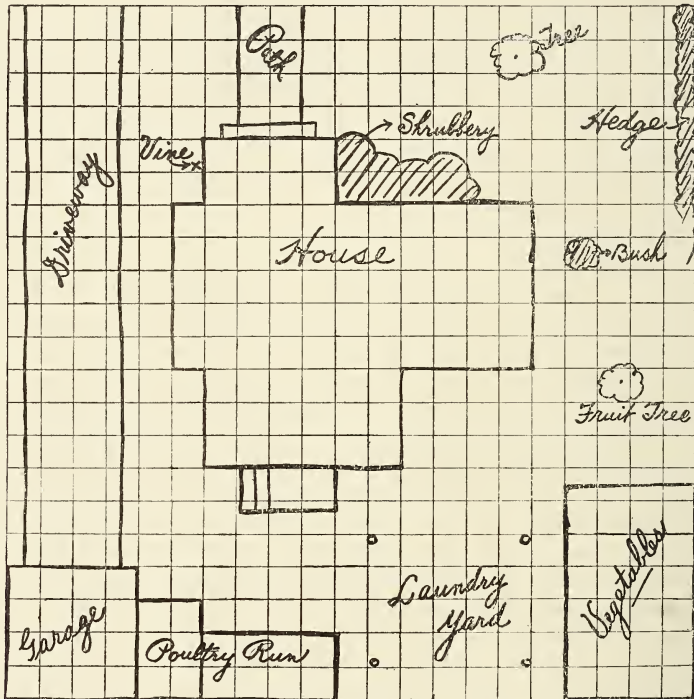


## THIS IS ONLY A ROUGH SKETCH

to illustrate how you can use the cross section paper on the inside pages of this folder. It is only necessary to give us the approximate measurements or locations.

Your sketch will be returned to you with our recommendations. Nothing technical, but so simple they will be easily interpreted and reproduced.

*Street*



We will advise you where a grape vine, peach tree or other fruits will fit in. We may suggest a foundation planting if you have none. We may recommend a screen to curtain off the dusty street or hide the garage. A few shade trees might make a decided improvement. Roses, flowers and vines all have their place in the landscape. We will tell you where they can be used and you will have a definite proposition to consider.

## HICKS NURSERIES



## Use All Winter

**C**ONSULT your landscape architect and gardener. Freezing does not stop digging till Christmas or later. Mulch to keep out frost and plant all Winter. We will do it for you. Add, subtract or change plants as you do furniture.

Get humus, as stable manure, weeds, leaves and peat, salt hay, thatch, eel-grass and sea-weed. Screen gravel for roads. Prune trees. Cut dying hickory and oak to save healthy trees. Select a Christmas tree to plant after Christmas. Force Rhubarb and Asparagus in boxes in the cellar.

HICKS NURSERIES  
Westbury, L.I. N.Y.