

<u>Company or Union</u>	<u>Car in possession</u>			<u>Operative</u>	
	<u>T</u>	<u>B</u>	<u>A</u>	<u>M</u>	<u>F</u>
Ikeda Taxi (Maeyachi-machi)			1	1	
Chiba Taxi (Iinokawa-machi)			1	3	
Ishinomaki Branch, Miyagi-ken Private- Car Union	158				
Onagawa Branch, MPCU	28				
Iinokawa Branch, MPCU	12				

(Osaki Division)

Jurisdictions of Osaki and Toda regional offices.

<u>Company or Union</u>	<u>Car in possession</u>			<u>Operative</u>	
	<u>T</u>	<u>B</u>	<u>A</u>	<u>M</u>	<u>F</u>
Osaki Truck Co. (Furukawa-machi)	89			164	
Japan Express Kogota Branch (Fudodo-mura)	21			197	14
Rikuzen Bus Co. (Furukawa-machi)		22		32	21
Furukawa Godo Taxi (Furukawa-machi)			6	10	
Matsuyama Jinsha-Kido Co. (Matsuyama-machi)			2	3	
Nakanida Godo Taxi (Nakanida-machi)			4	4	

<u>Company or Union</u>	<u>Car in possession</u>			<u>Operative</u>	
	<u>T</u>	<u>B</u>	<u>A</u>	<u>M</u>	<u>F</u>
Toda Godo Taxi (Tajiri-machi)			6	7	
Onsen Godo Taxi (Kawatabi-mura)			2	4	
Fukushima Taxi (Iwadeyama-machi)			1	1	
Osaki Branch, Miyagi- ken Private-Car Union (Furukawa-machi)	88		1		
Kami Branch, MPCU (Nakanida-machi)	30				

(Tome Division)

Jurisdiction of Tome regional office.

<u>Company or Union</u>	<u>Car in possession</u>			<u>Operative</u>	
	<u>T</u>	<u>B</u>	<u>A</u>	<u>M</u>	<u>F</u>
Senhoku Railroad Co. (Semine station, Fujisato-mura)		40	3	82	4
Japan Express Semine Branch (Semine, Fujisato-mura)	16			172	4
Tome-Motoyoshi Truck Freight Co. (Sanuma-machi)	53			115	
Tome Taxi (Tome-machi)			4	6	
Sanuma Taxi Co. (Sanuma-machi)			3	4	

<u>Company or Union</u>	<u>Car in possession</u>			<u>Operative</u>	
	<u>T</u>	<u>B</u>	<u>A</u>	<u>M</u>	<u>F</u>
Sanuma Branch, Miyagi-ken Private-Car Union (Sanuma-machi)	26		3		
Tome Branch, MPCU (Tome-machi)	23		1		

(Kurihara Division)

Jurisdictions of Kurihara regional office.

<u>Company or Union</u>	<u>Car in possession</u>			<u>Operative</u>	
	<u>T</u>	<u>B</u>	<u>A</u>	<u>M</u>	<u>F</u>
Rikuzen Bus Co. (Furukawa-machi)		22			
Miyagi Hokubu Truck Freight Co. (Tsukidate-machi)	33			63	
Japan Express Semine Branch (Fujisato-mura)	16				
Senhoku Railroad Co. (Fujisato-mura)		40	3		
Kurihara Track Co. (Fujisato-mura)			1	1	
Iwagasaki Taxi (Iwagasaki-machi)			1	2	
Tsukidate Godo Taxi (Tsukidate-machi)			3	5	
Wakayanagi Taxi (Wakayanagi-machi)			2	5	

<u>Company or Union</u>	<u>Car in possession</u>			<u>Operative</u>	
	<u>T</u>	<u>B</u>	<u>A</u>	<u>M</u>	<u>F</u>
Iwagasaki Branch, Miyagi-ken Private- Car Union (Iwagasaki-machi)	42		1		
Tsukidate Branch, MPCU (Tsukidate-machi)	27				

(Motoyoshi Division)

Jurisdiction of Motoyoshi regional office.

<u>Company or Union</u>	<u>Car in possession</u>			<u>Operative</u>	
	<u>T</u>	<u>B</u>	<u>A</u>	<u>M</u>	<u>F</u>
Kesenuma Truck Co. (Kesenuma-machi)	59			107	
Senhoku Railroad Co. (Fujisato-mura)	40		3		
Japan Express Kesenuma Branch	13			124	6
Sakai Taxi (Kesenuma)			1	1	
Kesenuma Branch, Miyagi-ken Private- Car Union (Kesenuma-machi)	116		3		

(9) MARINE FREIGHT DEPT

1. General Program.

1) Strategic Organization of Regional Squads.

In order to carry out the emergency marine freight program in case of the disaster, regional freight squads will be organized centering around the marine freight agencies. The chief of Marine Freight Dept will administer the regional squads and appoint for each unit a squad chief and a squad vice-chief. Details of respective squads will be :

a. Shiogama Regional Marine Freight Squad —

Component members	-	47
Ships available	-	91
(Total tonnage	-	7,606)

b. Ishinomaki Regional Marine Freight Squad —

Component members	-	37
Ships available	-	43
(Total tonnage	-	7,606)

c. Onagawa Regional Marine Freight Squad —

Component members	-	18
Ships available	-	18
(Total tonnage	-	384)

d. Kesenuma Regional Marine Freight Squad —

Component members	-	27
Ships available	-	33
(Total tonnage	-	1,114)

2) Freight Plan.

a) For persons.

In case of the emergency situation in which the land transport is made unavailable, measures will come into effect to make available the refugees to get on board both train and ship on presentation of the "sufferer certificate".

b) For goods.

Emergency freight plan will include available transportation of goods on the "transport certificate" issued from the mayor of the victim community. The fare costed in such case will be balanced afterward.

3) Stock of Oil.

The following amounts of fuel oil will be allocated for stock at Shiogama, Ishinomaki, Onagawa and Kesenuma ports :

Heavy oil	-	50 k.
Machine oil	-	4 k.
Light oil	-	24 k.

4) Coastal Warehouses.

With a view to securing relief materials in coastal storages, some warehouse agencies will be included in the members of respective regional marine freight squads.

a. Shiogama Region.

Warehouse agencies as squad members	-	4
Storages available	-	42
("Tsubo" total	-	2,967)

b. Ishinomaki Region.

Warehouse agency (squad member)	-	1
Storages available	-	2
("Tsubo" total	-	133)

5) Disaster Relief Team in Tohoku Shipping Operation Bureau.

A disaster relief team will be organized in Tohoku Shipping Operation Bureau, components being 16 from clerical officials in the Secretariate, 12 from Shipping Dept, 8 from Ship Dept, and 6 from Crew Dept. But in case the disaster expands its influence, number of the team members will be increased through designation by the chief.

2. Emergency Measures.

In case of emergency, a mobilization plan will be brought on stage in accordance with the following design :

- a) Secretariate :
 - 1) Collection and contact of local suffering informations - (Correspondent chief)
 - 2) Welfare of the team members
 - (General Affairs chief)
 - 3) Synthetic adjustment of marine freight activities - (Planning chief)
- b) Shipping Dept :
 - 1) Checking of the name-list of marine freight agencies - (Freight chief)
 - 2) Checking of ship-list
 - (Freight chief)
 - 3) Plan for assurance and distribution of emergency fuel oil - (Fuel chief)
 - 4) Plan for enlistment of coastal storage in emergency use - (Supervision chief)
- c) ship Dept.
 - 1) Checking of the name-list of crew
 - (Labor chief)

- 2) Plan for emergency repair of ships
- (Ship-building chief)
- 3) Provision of the repair materials
- (")
- 4) Account - (Account chief)

3. Contact keeping with Land-Transport 1st & 2nd
Dept.s.

Regular liaison meeting will be observed with
the date to be fixed separately.

(10) COMMUNICATIONS DEPT

With the objective of assuring information contact in the case of emergency calamity, the following measures will be taken by this Dept:

1. General Program.

1) Thorough Information of Existing Communications Lineages.

Respective lineages of Communications facilities in this prefecture are denoted in Map No.1, Map No.2, and Map No.3, which are prepared in the Communications rescue headquarters. Location of each unit and its lineage will be mastered by all members of rescue teams.

When circuit becomes disrupted, the rescue team members will exert their efforts to keep information contact through relaying and other available emergency means. All the rescue members will also be made informed of various contact means existing outside the Communications system such as Railways, Police, and Meteorological lineages.

2) Maintenance of Communications Facilities.

Keeping close contact with the Communications maintenance members, the rescue team will collaborate with

the routine duty members to maintain the Communications facilities. Setup for their repair and maintenance with persons on duty will be fixed separately.

3) Stock of Repair Materials.

Materials necessary for the repair of Communications facilities will be secured at all cost and their categories and quantities will be subject to occasional inspection.

4) Training of Emergency Wireless Communication.

To cope with the emergency case in which telegraph communication service is disrupted, synthetic training of Communications members will be exercised for the successful functioning of wireless communication service.

2. Emergency Measures.

1) Information Contact.

Contact of information at the time of disaster will be assured, as a rule, through telegraph communication system.

2) Communications Service.

Communications service at the time of disaster in Communications offices will be rendered on the following

policy:

a) For telegram.

i) The word "emergency" will be written in unfilled space on the telegram blank.

ii) This "emergency telegraph" will be given priority to be handled foremost.

b) For Telephone.

i) Application for telephone message will be made as "disaster information".

ii) Such application will be given preferential treatment next to the message of the Occupation Forces.

Even in case the circuit is cut, such message as through the above application will be delivered in any event as prompt as possible through emergency detour relay or other means. Eligibility for such priority treatment of message and its contents will be checked on the following principle:

"The following telegram or telephone shall be handled on priority:

(1) "Urgent telegram" or "special urgent telephone message" which needs urgent rescue or emergency steps therefor in case of calamity or cataclysm and which makes contact between the following agencies:

Ministers. Ministerial bureau or department directors. Governors and subordinate bureau or department directors of Central Government boards. Chairman of Central Disaster Board. Prefecture Governors. Prefectural regional office chiefs. Chiefs of Central Government board branches. Communal mayors. Chiefs of Central Government's local detachments. Chairmen of local disaster boards. Chairmen of prefectural disaster boards.

(2) "Urgent telegram" or "special urgent telephone message" whose contents require "urgency" in view of public order maintenance at the time of calamity, riot, or serious crime, and which makes contact between the following agencies:

Prime Minister. National public Safety Committee. National Rural Police Headquarters. Regional Police Headquarters. Prefectural Public safety Committees. Prefectural police headquarters, N R P. Police stations, N R P. (including detachments) Communal public safety committees. Communal police headquarters. Communal police stations.

3) Disaster Rehabilitation.

When circuit is disrupted due to disaster, concerted efforts will be concentrated on as speedy restoration of the service as possible. In case time will require before the restoration, the rescue team will keep contact, covering the "disrupted space" by personal relay or other available means.

4) Circuit Assurance at the Time of Disaster.

a) Of various local circuits for telegraph and telephone, the parts from Sendai Telephone Office and Sendai Telegraph Office to Sendai Telephone Translation Office are cased in the underground cable. In view of these of critical importance, a concentrated effort will be focused on the maintenance of these parts in case of emergency.

b) Of various local telephone circuits, priority care will be paid to the maintenance of the parts between Tokyo and main cities in the Tohoku district, between Sendai and main cities in the Tohoku district, and between Sendai and pivotal points in Miyagi prefecture.

c) As for local telegraph circuits, priority will be given to the parts between Sendai and Tokyo, Sendai and Morioka, Sendai and Aomori, and other pivotal lines.

5) Measures to Meet Disruption of Wire Service.

In case of emergency when the wire communication service is interrupted due to disaster, an emergency wireless communication system will come into service in accordance with the following outline :

a) Inclusive Facilities for Emergency Wireless Service.

<u>Wireless station</u>	<u>Location</u>	<u>Main party station</u>
Sendai Telegraph Office	Sendai	Tokyo. Nagoya. Osaka. Fukushima. Aomori. Morioka. Akita. Yamagata. Hirosaki. Hachinohe. Sakata. Ishinomaki.
Ishinomaki Post Office	Ishinomaki	Sendai. Fukushima. Aomori. Hirosaki. Hachinohe. Morioka. Akita. Yamagata. Sakata.
Miyagi Prefectural Hq, National Rural Police.	Sendai	Aomori, Akita, Yamagata, Fukushima, and Iwate pref headquarters, and Central Hq NRP.
Ishinomaki Police Station	Ishinomaki	All wireless units in Prefecture.
Kesenuma Police Station	Kesenuma	All wireless units in Pref.
Furukawa Police Station	Furukawa	"
Shiroishi Police Station	Shiroishi	"

<u>Wireless station</u>	<u>Location</u>	<u>Main party station</u>
Shiogama Police Station	Shiogama	All wireless units in Pref.
Wakayanagi Police Station	Wakayanagi	"
Sendai Supervision Dept, Sendai Railway Division	Sendai	All wireless units under the Dept jurisdiction.
Ishinomaki Wireless Station	Ishinomaki	Ships.
Kesenuma Fisheries Experimental Station branch	Kesenuma	Ships.

b) Management of Emergency Wireless Service.

1) The emergency wireless service will come into operation when wire circuits are damaged seriously.

ii) As a rule, public telegram messages will be serviced via Communications wireless facilities, and when this service is disrupted, those of police or Transportation Ministry will be utilized.

iii) The scope of public telegram messages to be handled through this emergency wireless system will be limited to the following cases : (Words per message in principle will be less than 200, and if occasions demand, times of dispatch may be restricted.)

- a. Official dispatches regarding counter-casualties and rescue of sufferers.
 - b. Telegrams regarding urgent repair of emergency communication facilities.
 - c. Police correspondence concerning urgent measures for public safety maintenance.
 - d. Railways communication regarding repair of tracks, conveyance of refugees and urgent transport of relief materials.
 - e. Official dispatches regarding the Occupation Forces.
 - f. Other inevitable urgent cases.
-

(11) ENGINEERING DEPT

In case of emergency disaster in which civil engineering installations and housing are exposed to danger, this Dept will keep close contact with the Fire-Fighting Dept and its subordinate organizations to exert efforts in minimizing the devastation. In order to attain this purpose effectively, technical guidance in emergency rehabilitation engineering will be conducted on the outline as follows :

1) Provision of Flood-Control Materials.

Communities along the major rivers will organize "flood-control unions" and "river protection associations" and always stock empty bales, ropes, logs and other items necessary for flood-control activities to be furnished to Fire-Fighting members in case of emergency.

2) Flood-Control Training.

The foregoing flood union members will meet in the "flood-control training" which will be observed by the middle part of July before water increase season respectively at around 10 places of critical importance in view of flood thread.

3) Installation of Engineering Party.

Civil engineering members on duty will organize an "engineering party" which will have as its components "civil engineering squads" and "building construction squads". These operative squads will reinforce the divisions and subdivisions in case of need. Their organization and duties will be :

a) Civil Engineering Squad.

Six (6) in number, each unit will be in charge of the jurisdiction of each civil engineering detachment (doboku shucchosho)

For the river area under the direct jurisdiction of Construction Board, some officials of Tohoku Regional Bureau of Construction Board will be included in the squad members.

For Shiogama port and a part of Teizan canal, some officials of Shiogama Port Engineering Office of Harbor Construction Dept, Transportation Ministry, will be included in the squad members.

b) Building Construction Squad.

Also six (6) in number, each unit will be organized to be in charge of the jurisdiction

of each civil engineering detachment.

Some officials of Miyagi Building Detachment, Construction Board, will be embraced in the squad members.

(Reference Annex)

OUTLINE FOR EXECUTION OF
COUNTER-DISASTER STEPS

(Miyagi Materials Adjustment
Office, Agriculture Ministry)

1. In order to cope with emergency disasters, remedial as well as precautionary measures therefor shall be in accord with this outline.
2. Cooperation shall be exerted in the procurement, transportation, storage and allocation of materials which will be labeled "emergency supplies" in accordance with the decision at Miyagi-ken Disaster Board (which hereafter will be called "Board"), and which are placed under the administration of the Agriculture Ministry.
3. In order to attain the foregoing object, the following teams shall be organized with respective chiefs

administering their teams under the control of the Office chief :

- 1) General Affairs Team.
- 2) Ministry-Liaison Team.
- 3) Materials Procurement Team.

4. Organization and duties of respective teams shall include :

- 1) General Affairs Team.

With Adjustment Section as the center of the organization, the Team shall always keep close contact with the "Board" and rescue teams to collect available data for the smooth execution of the relief program.

- 2) Ministry-Liaison Team.

With Agricultural Reclamation Section as the center of the organization, the Team shall precisely and promptly liaison the requirements checked by the General Affairs Team with the Agriculture Ministry for the purpose of securing allocation of such emergency materials in need.

- 3) Materials Procurement Team.

The team shall be organized centering on the

axis of Adjustment Section and Agricultural Reclamation Section. With close contact always kept with Ministry-Liaison Team, the Team shall do its level best for the speedy translation of the Ministry allocation into "actual goods" to transport them to the requiring localities.

5. Every time each of above duties is effected, the results shall be contacted to the Commander of Disaster Relief Company by telegram, telephone, or any other means as prompt as possible.

(12) ELECTRIC ENGINEERING DEPT

With an eye to rehabilitating promptly electric installations in the face of disaster ravage, Sendai Branch of Japan Power Generation and Transmission Co. and Miyagi Branch of Tohoku Power Distribution Co. will organize "Electric Engineering Dept" which will be placed under the control of the Power Department chief of Sendai Commerce and Industry Bureau. Emergency remedial steps to be taken under the charge of Electric Engineering Dept include:

1. Priority Order for Rehabilitation of Power Supply Facilities:
 - 1) Direct requirement in the Occupation Forces.
 - 2) Water supply and sewerage facilities.
 - 3) Correspondence and broadcasting facilities.
 - 4) Railways and tracks.
 - 5) Hospitals and clinics.
 - 6) Disaster relief facilities.
 - 7) Essential plants and works.
 - 8) Lighting on streets and avenues, and traffic sign lights.
 - 9) Indoor lighting.
 - 10) Factories in general.
 - 11) Others.

Above order may be altered through instructions of the chief of Electric Engineering Dept in accordance with particular situations.

2. Assurance of Power Generation and Transmission Capacity:

The foremost priority will be given to the assurance of power supply for rescue work and rehabilitation activities to be staged for the benefit of the disaster-victim district.

3. Installation of Engineering Teams.

For the purpose of speeding up the emergency rehabilitation in case of any disaster, special engineering teams will be organized to be ready for operation. They include:

<u>Unit</u>	<u>Team, affiliated</u>	<u>Member</u>
Japan Power Generation and Transmission Co.'s Sendai Branch Engr Unit	Business Team	3
	Power Maintenance T	10
	Track T	10
	Civil Engr T	10
	Total	<u>33</u>
Tohoku Power Distribution Co.'s Miyagi Branch Engr Unit	General Affairs T	5
	Power Supply T	3
	Power Maintenance T	6
	Civil Engr T	5
	Track T	8
	Materials T	3
	Sendai Office	22
	Shiogama O	8

Furukawa Office	4
Ishinomaki O	8
Ichihazama O	4
Samuma O	4
Kesemama O	6
Shiroishi O	7
Total	<u>93</u>
Gross Total	<u>126</u>

4. Mutual Collaboration of Rehabilitation Members.

A plan will previously be mapped out to be available for mutual aid of electric engineers and reinforcement from major power consumers with a view to laying out a concerted mustering program in case of emergency.

"Reinforcement engineering unit" will be filed out through instructions of the Electric Engineering Dept chief, and the reinforcement team will act under the command of the reinforcee unit.

5. Provision and Adjustment of Rehabilitation Materials.

Materials for damage-rehabilitation will be stored in the following storages and always checked for assurance of the amounts of revamping requirements in stock:

(Sendai Branch, Japan Power Generation and Transmission Co.)

<u>Storage</u>	<u>Location</u>
Sendai Warehouse	33, Shinterakoji, Sendai

(Miyagi Branch, Tohoku Power Distribution Co.)

<u>Storage</u>	<u>Location</u>
Miyagi Branch's Atagoshita Warehouse	22, Koshiji, Sendai
Sendai Office W.	300, Tsuchidoi, Sendai
Shiroishi Office W.	Shiroishi, Shiroishi-machi
Shoigama O. W.	Chikko, Shiogama
Furukawa O. W.	Nakazato, Furukawa-machi
Ichihazama O. W.	Shinsaka Takahashi, Ichihazama-machi
Sanuma O. W.	Nishi-Sanuma, Sanuma-machi
Kesenuma O. W.	10, Yoka-machi, Kesenuma-machi
Ishinomaki O. W.	7, Nakamachi, Ishinomaki

6. Order Contact and Information Relation

In order to assure speed and accuracy in "contact of orders" and "information on suffering and rehabilitation", a plan will previously be mapped out to effect efficient utilization of "peace-maintenance communication facilities" and other established correspondence systems.

(13) COOPERATIVE DEPT

(A)

I. Setup of Cooperative Dept.

1) Miyagi Chapter chief of Japan Red Cross will assume post of the Dept chief and the chapter vice-chief that of the Dept vice-chief. Special disaster relief center will be instituted in the Chapter to be headed by the Chapter councillor.

2) The special disaster relief center (to be called "relief center" hereafter) will have three (3) sections, namely, general affairs section, care section, and accounts section. "General affairs section" will have three (3) branches : investigation, contact, and development, and " care section" three (3) branches: medical treatment, welfare, and materials, while "accounts section" will institute in it two (2) branches of contribution-invitation and accounts.

3) In order to help smooth the execution of relief plan, as an advisory organ for the Cooperative Dept chief, a "disaster relief committee" will be instituted within the Chapter with component members to be screened from members of the following organizations: (Reference: Annex - list I)

Miyagi-ken Branch of National Relief Association

(Dobo Engokai)

Miyagi-ken Social Work Association.
Miyagi-ken Doctors Association.
Miyagi-ken Mid-wives Association.
Miyagi-ken Branch of Saisei-kai.
Kahoku Shimpo-hsa (Press).
Yukan Tohoku Shimbun-sha (Press).
Sendai Central Broadcasting Station .
Miyagi-ken Federation of Youth Associations.
Miyagi-ken Federation of Women's Associations.
Miyagi-ken Pharmacists Association.
Miyagi-ken Teachers Union.
Miyagi Prefecture People's Welfare Committee.

2. Operation Plan Provided in Cooperative Dept.

1) Commissioned Duties.

The scope of medical treatment and mid-wife agency commissioned from Prefecture includes:

a) Dispatch of Japan Red Cross' relief team.

This team will be organized by the Chapter members and other members affiliated with some medical organizations outside the category of "public body" who will be enlisted in the team members based on the contract between the Chapter and such organizations. As a rule, such teams will be five(s) in number. But, for the time being, the teams will solely be composed of the Chapter's Hospital members.

b) Local organization of medical teams.

Regional medical team will be organized in each division and subdivision. Setup and lineup of each team will be fixed through independent plan at the division or subdivision concerned.

- c) Through "first rescue" made by reserve nurses of Japan Red Cross.
- d) Through "first rescue" made by volunteer rescue members from Japan Red Cross Service Committee.

2) Relations Adjustment.

a) Setup

With a view to adjusting relations between various organizations concerned, a special committee pertaining to the liaison adjustment will be organized in the Chapter with the Chapter vice-chief as the chairman. Members of the committee will be screened and commissioned from staff members of the following civilian organizations:

Miyagi-ken Branch of National Relief Association.
(Dobe Engokai)

Miyagi-ken Branch of Saisei-kai.

Kahoku Shimpou-sha.

Yukawa Fohoku Shimbun-sha.

Sendai Central Broad Casting Station.

Miyagi-ken Federation of Women's Associations.

Miyagi-ken Federation of Youth Associations.

Miyagi-ken Doctors Associations

Miyagi-ken Mid-wives Association.

Miyagi-ken Social Work Association.

Miyagi-ken Teachers Union.

Miyagi Prefecture People's Welfare Committee.

b) Relief Activities through Relations Adjustment.

i) Medical care and mid-wife agency.

Local medical team will be organized by doctor and nurses residing in or near the victim scene. Such team as a rule, will be composed of one (1) doctor, two (2) nurses and other eleven (11) cooperative members who will be provided from local Japan Red Cross service committee. The duty activities of this medical team in case of emergency will be staged under the control of the chairman of Japan Red Cross Committee or its divisional region chief.

ii) Labor service.

Cooperative members from Japan Red Cross service Committee in or near the disaster scene will collaborate in the care of sufferers at the refuge, cooking service and distribution of foodstuffs, clothing and daily necessities. Such labor service will be rendered under the control of the responsible person in charge of rescue activities at each service district. Each service unit will consist of 11 members, one of them assuming the team chief.

iii) Raising of charity funds or contribution-invitation.

In accordance with the degree of any suffering, a move will be steered to raise charity funds through contact with the liaison adjust-

ment committee on the basis of the following outline:

- (a) Propagandizing through newspaper and broadcasting.
- (b) Receiving of fund contribution at various organizations.
- (c) All the money raised will be summed up and administered in the Accounts Section of the Chapter's Relief Center.
- (d) The funds raised will be distributed fairly after referring the matter to the liaison adjustment committee.
- (e) The result of the fund disposal will be made public by the Accounts Section.

(B)

1. Setup of Cooperative Dept's Division and Subdivision.

1) Disaster relief committee will be instituted for each of the Dept divisions and subdivisions. Division chief and subdivision chief will assume chairmanship for corresponding committees. Members of such relief committee will be commissioned from among local influential persons for the division and from among representatives of local civilian organizations for the subdivision.

2) Each of divisions and subdivisions will have branches in it such as "investigations", "planning", "care", "labor service", "relations" "consultation" and "fund-raising". Any of the members is not precluded from assuming two or more seats in accordance with particular local conditions.

2. Operation Plan in Division and Subdivision.

1) Medical treatment

a) In coping with any calamitous situation, concerned division and subdivision chiefs will file out local medical team or teams to stage the "first rescue" activities for the benefit of wounded or invalid sufferers. Such medical teams will be instituted two (2) in number in Sendai division and one (1) for each of other cities and subdivisions in town and village. Routine members of a team unit will be one (1) doctor, three (3) nurses, and one (1) clerk, totalling 5.

b) Prearrangement

With the aim of assuring successful staging of the "first rescue" operation, division chiefs as well as subdivision chiefs will make prearrangement with local clinics and hospitals.

c) Emergency local clinic

With a view to enlisting available utilities in emergency clinics, the division chief and the subdivision chief will conclude previous agreement with proprietors of local hospitals, maternity hospitals and other available buildings not to fail in medical activities in case of any disaster.

2) Labor service

Local labor service in case of any disaster will be rendered by members of Red Cross service committee and other volunteers. Such service members will act on the following service categories under the command of the concerned division chief and through close

contact with regular members in charge:

Service category:

Cooking service — Women team

Distribution of
commodities — Men team

Service in the
refuge — Men team

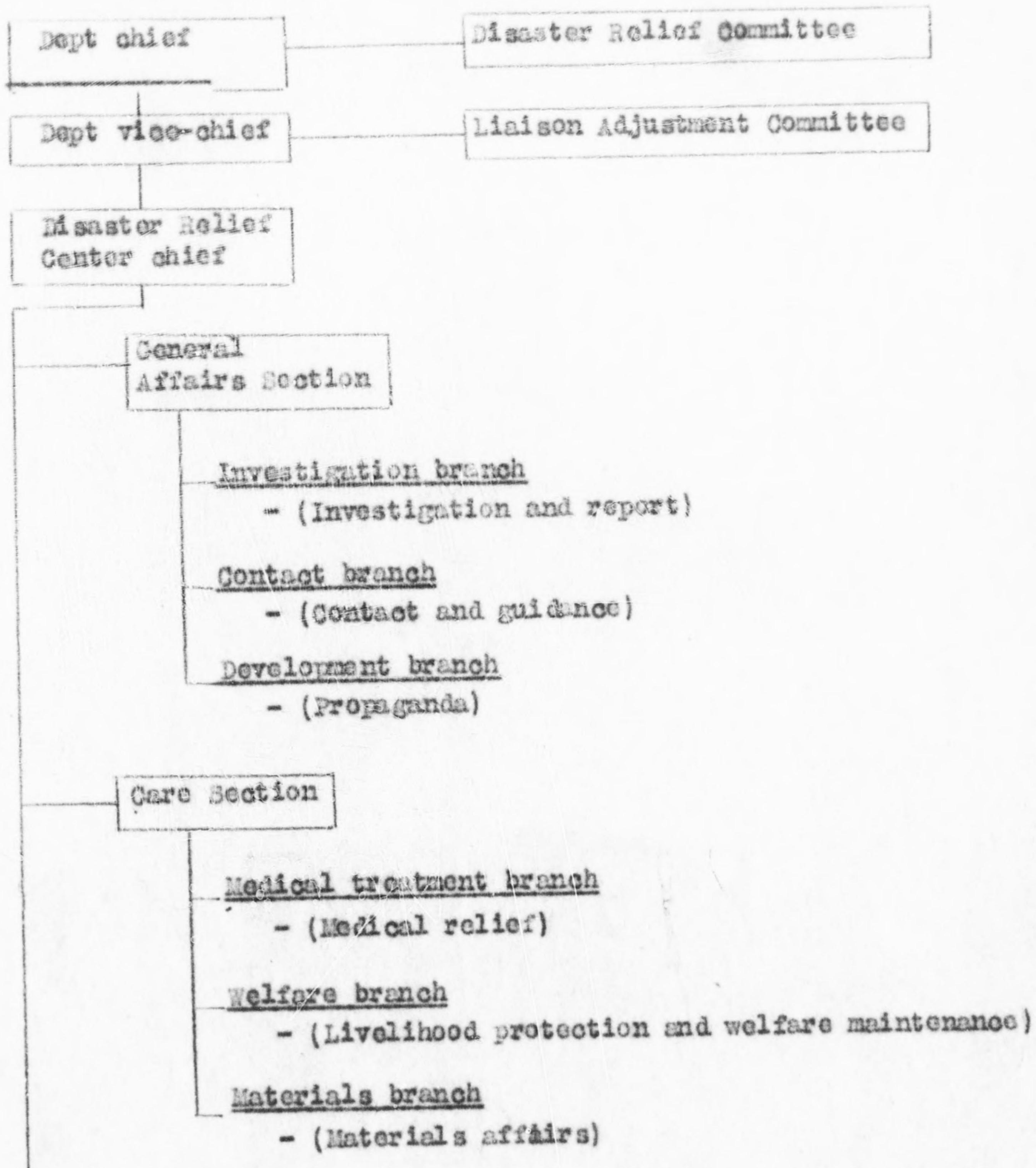
Each unit team will comprise 11 members, one of them assuming the team chief. The division chief will work out beforehand a plan regarding apportionment of the team members to respective duties.

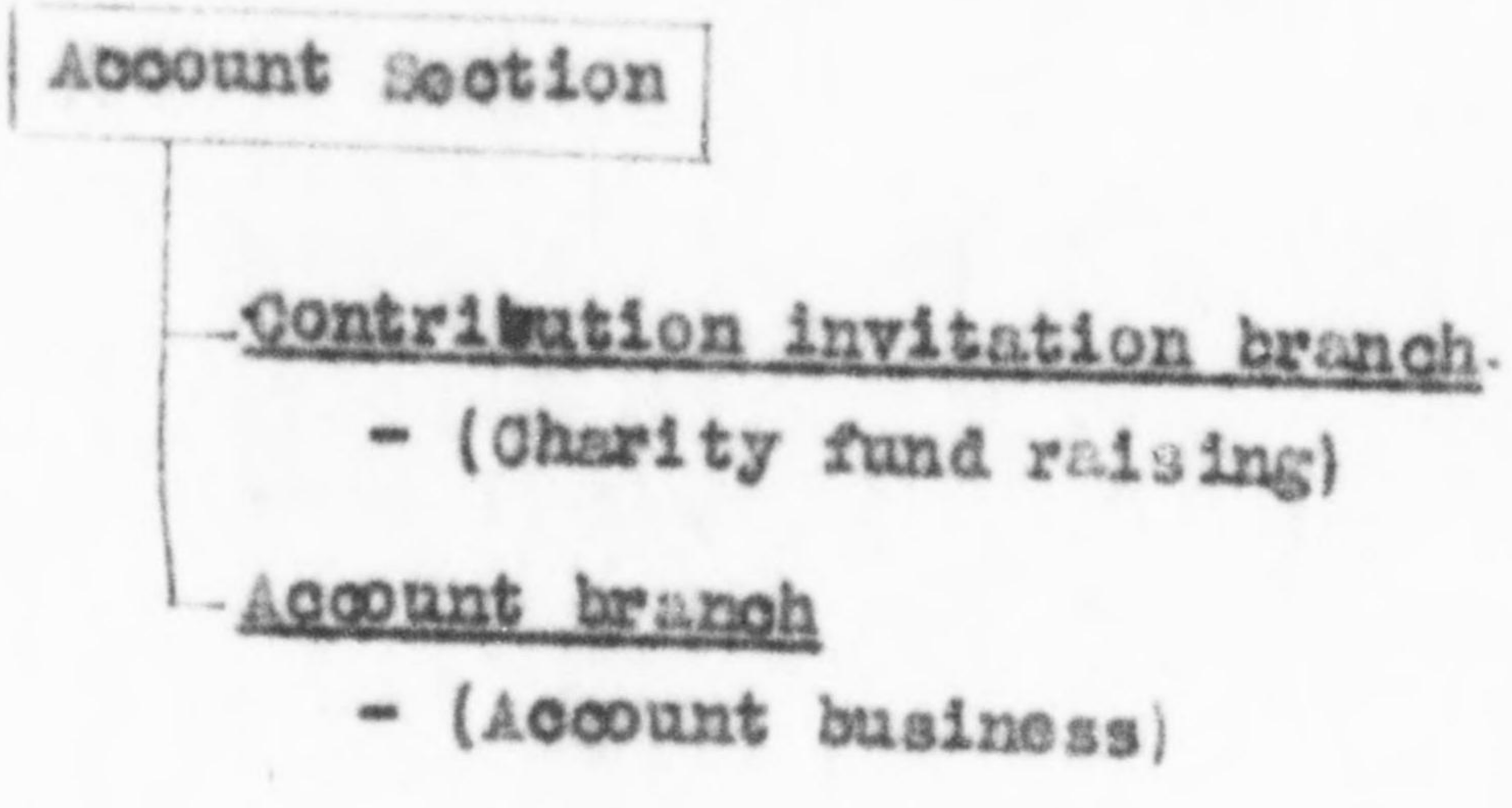
3. Charity-fund Raising

In accordance with the actual status of any particular disaster, the division chief will convene "disaster relief committee" for discussion on the category, means, period and other items with regard to the fund-raising program. The effect will soon be contacted with the Dept headquarters.

Annex-List 1.

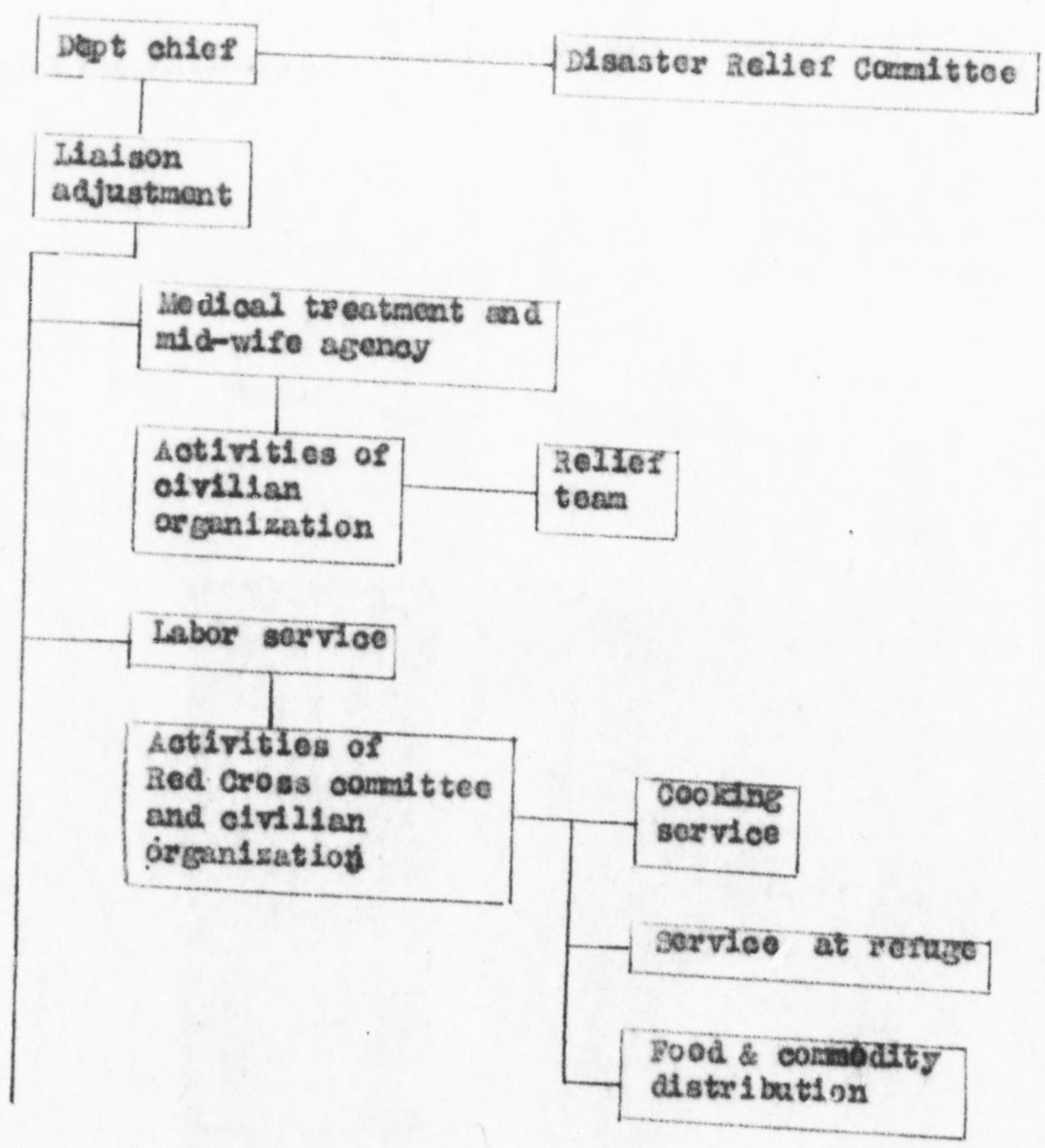
SETUP OF COOPERATIVE DEPT

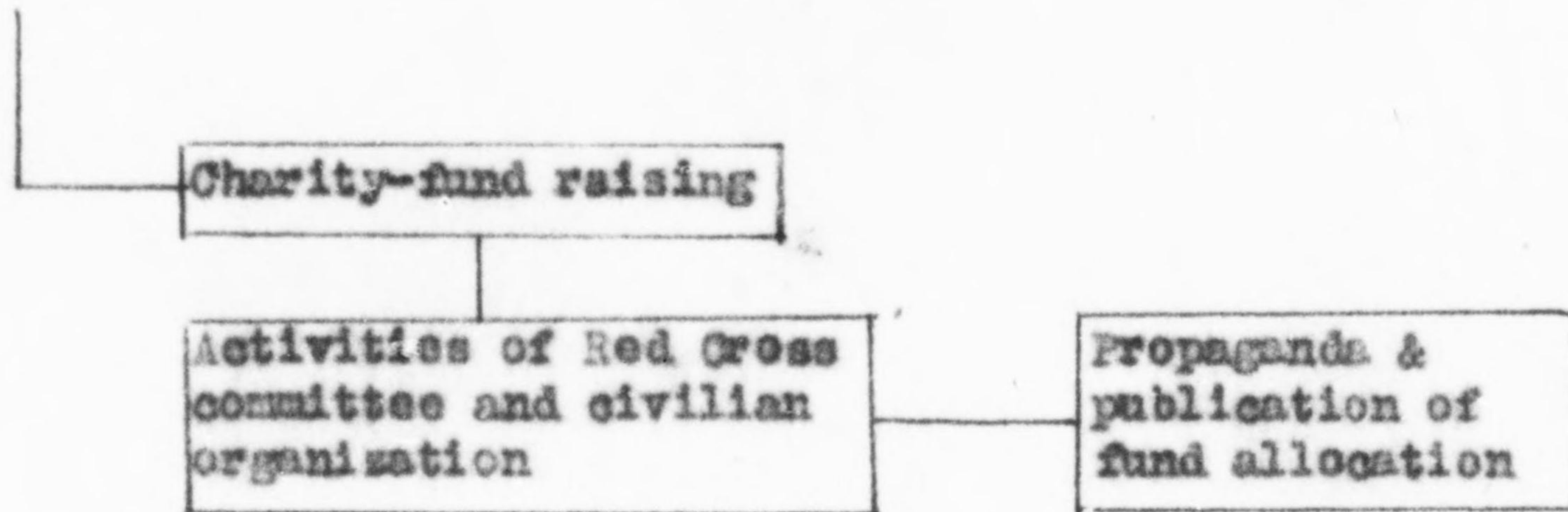




Annex-List II

BUSINESS LINEAGE OF COOPERATIVE DEPT
(1st Lineage)





(2nd Lineage)

