



国立国会図書館

いろは歌ニツ巴 6巻 207-915

207
915

いろは歌ニツ巴

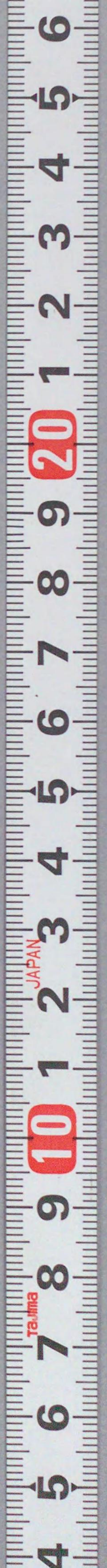
いろは歌ニツ巴



ガラス使用



申據妙
 文政九年
 本問屋
 錦森堂
 大星
 三國信圓
 表
 子
 入
 糸



志満山人作
歌川國信画

大星いろは歌ニツ巴
物詔し

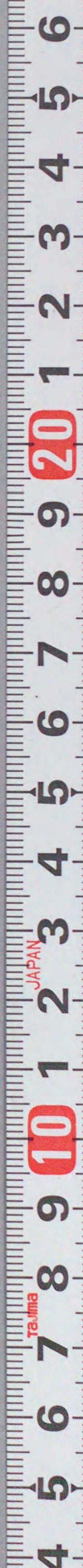
文政七年
申新板
本問屋錦森堂版

一
君子の徳風なり。小人の徳ハ草也。草に風と云ふ且つばあつて
分や津く浦くよも吹風よあまなる艸もたれ。居あがらば
と趣多夫が中もも金集談と云る書あり。世よ妖怪迷
書載きり。是亦の事なりとばはる。陸野が奇変逢ハる。大星が
星とさうきる奇談のまじれた就寫か下糸子行訖打の其猛勇や
琴歌がさつりかんむれ實情よ主治の目之く薬種屋を。さう
加減する刺の強庵曾よ針打たくさく打ハ納る若菜のは祝儀
をうと其名ハ立波や。ニツ巴と題するもの。

文政七甲申春正月吉日

志満山人識

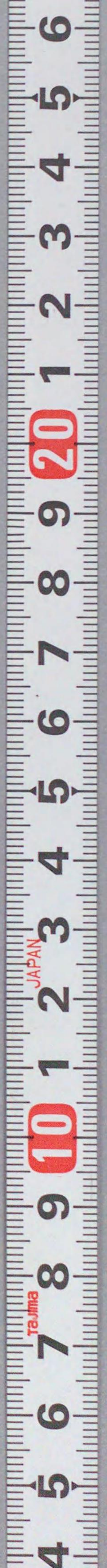


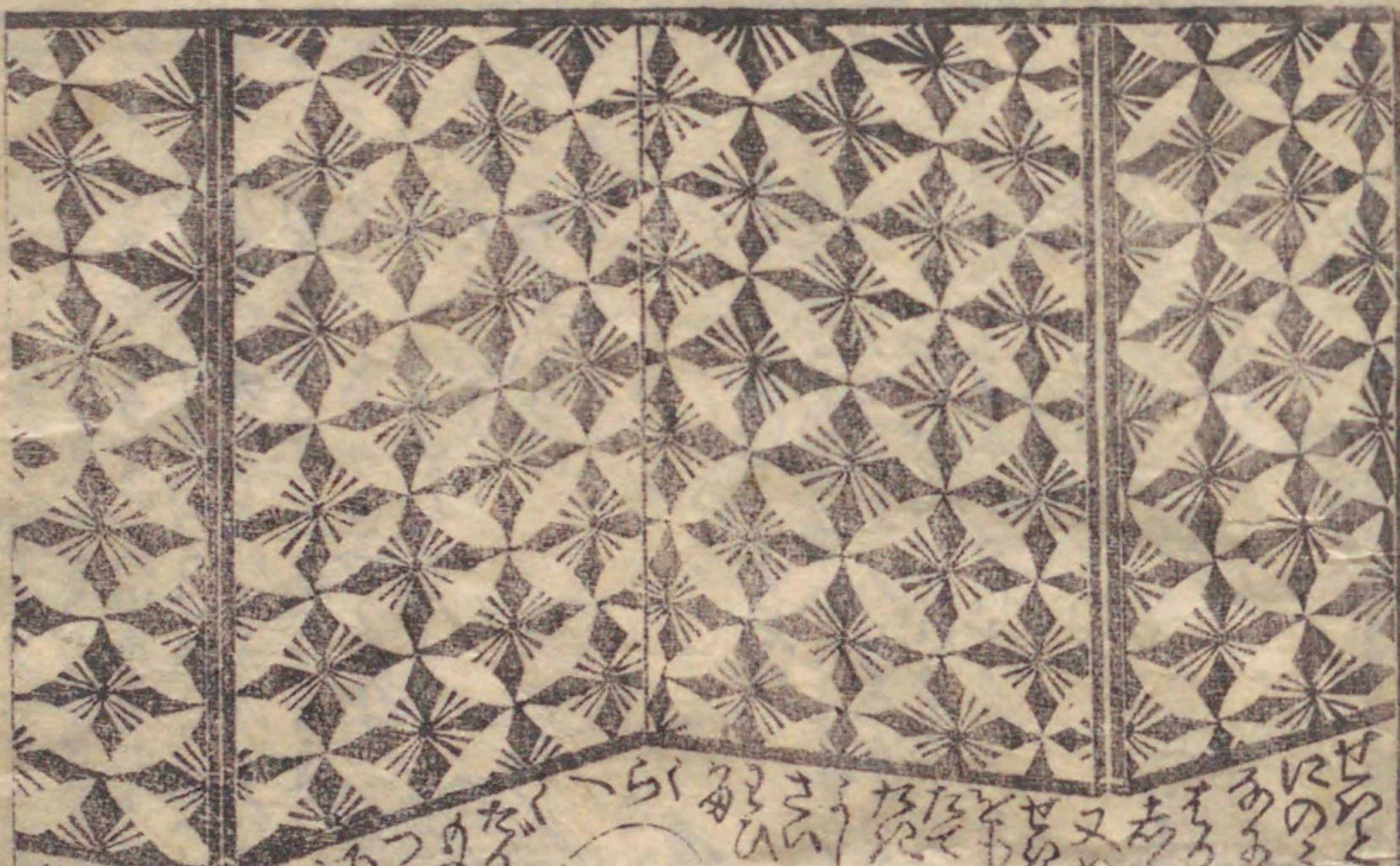




二〇

二〇



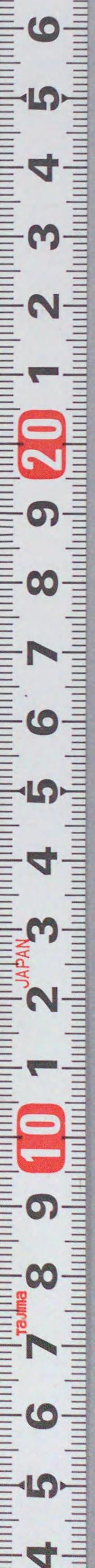


Handwritten Japanese text in the lower portion of the left page, including the characters '二' and '二'.

Vertical columns of handwritten Japanese text at the top of the right page, including the characters '二' and '二'.



Handwritten Japanese text in the lower portion of the right page, including the characters '二' and '二'.





101

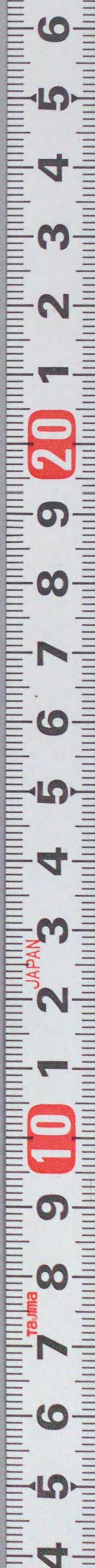
あつたまの
ちのぬかや
まのりぞ
あつたまの
ちのぬかや
まのりぞ
あつたまの
ちのぬかや
まのりぞ



あつたまの
ちのぬかや
まのりぞ
あつたまの
ちのぬかや
まのりぞ
あつたまの
ちのぬかや
まのりぞ
あつたまの
ちのぬかや
まのりぞ







文政七年
志満山人水
申新板
歌川國信画

いろは歌ニツバ
編序

本問瓦
三巻所二丁目
表紙治書板

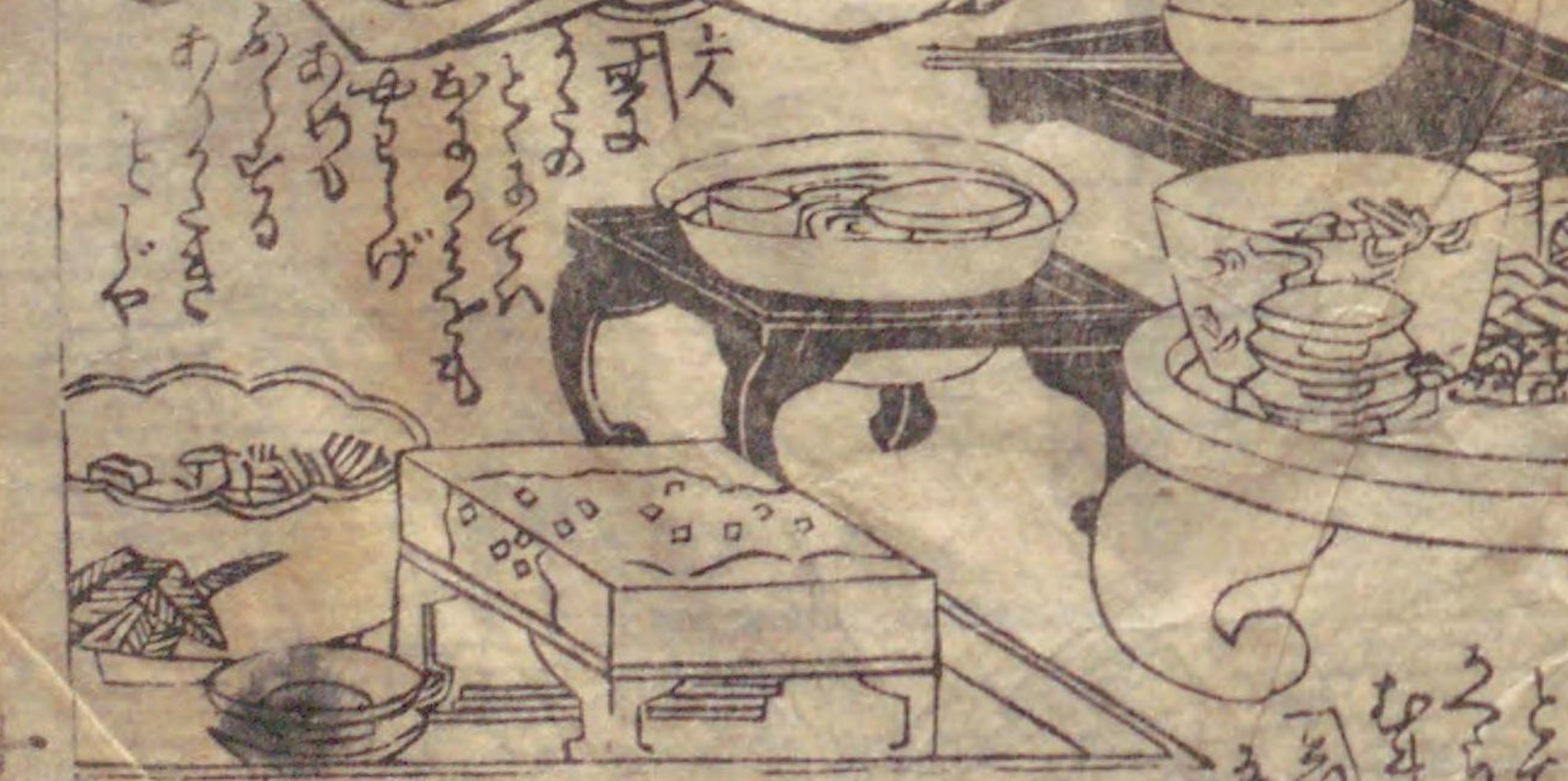






Handwritten text in the left column, likely a commentary or a list of names. The text is written in a cursive style and includes several lines of characters.

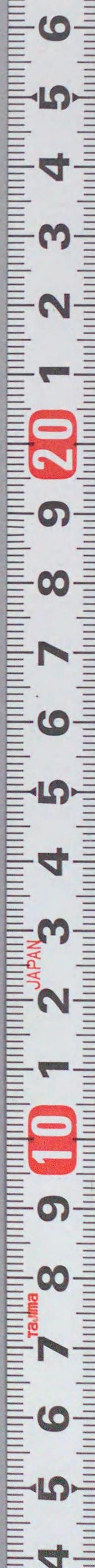
117

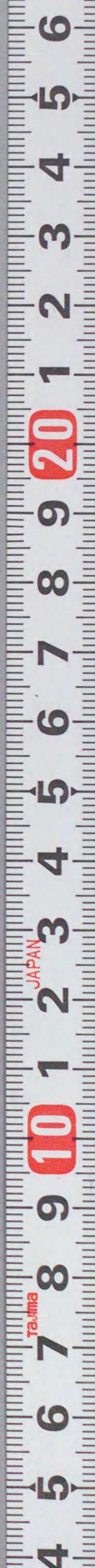
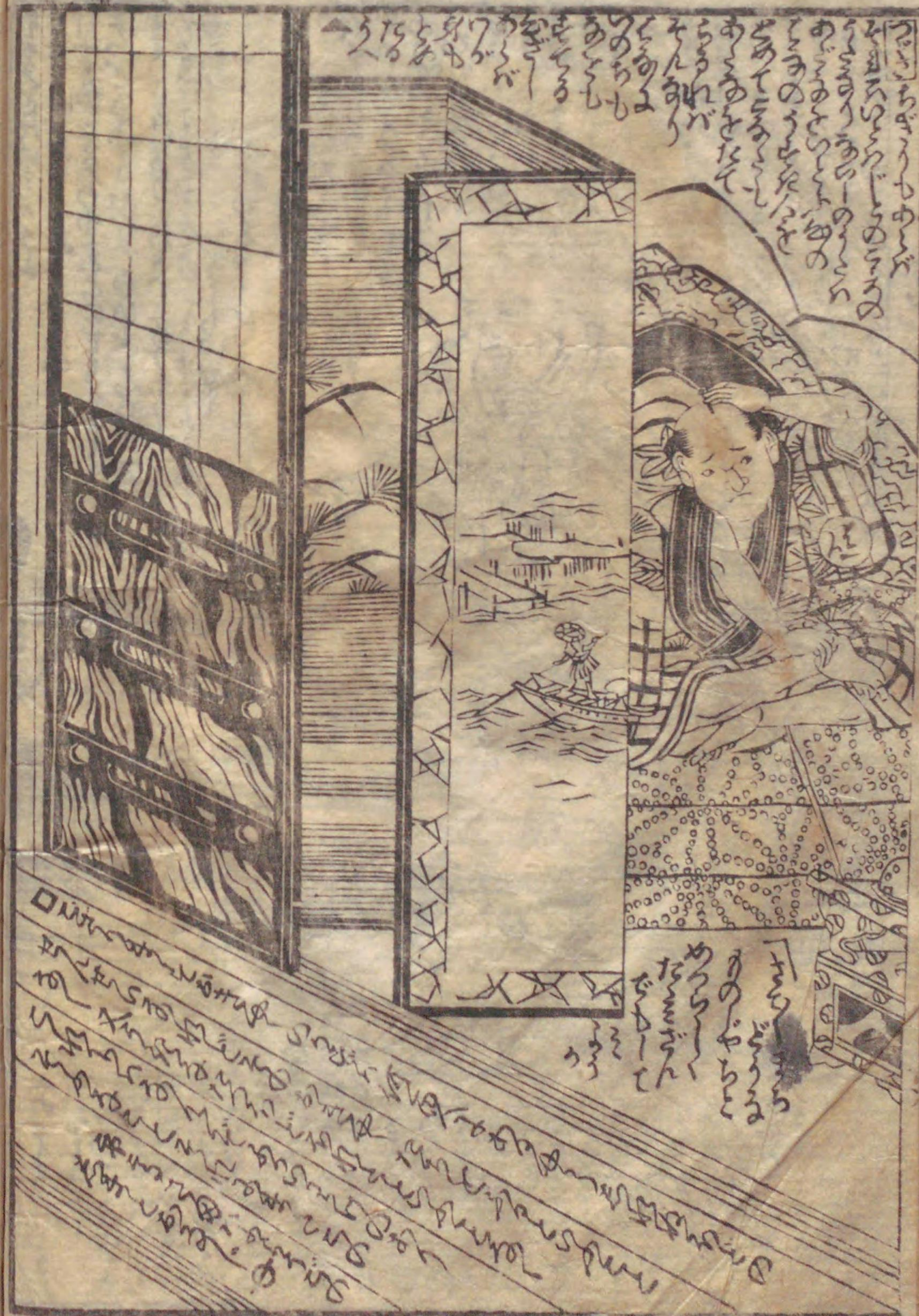


Handwritten text in the bottom left column, continuing the commentary or list of names.

Handwritten text in the right column, likely a commentary or a list of names. The text is written in a cursive style and includes several lines of characters.

118





Handwritten Japanese text in vertical columns, likely a song or poem, surrounding the illustration of a woman.



Handwritten Japanese text in vertical columns, surrounding the illustration of a man.





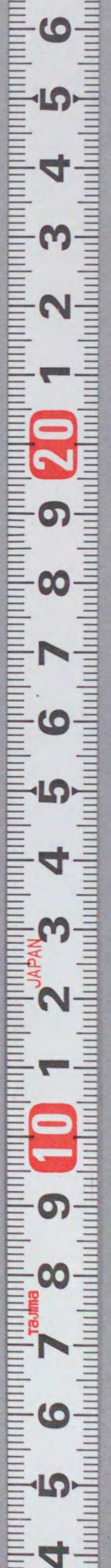


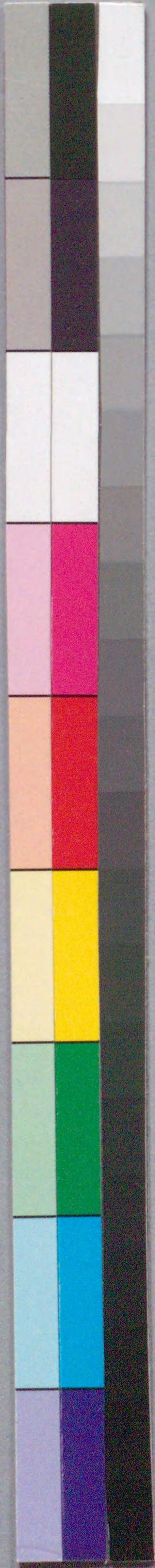
Handwritten Japanese text in vertical columns, likely a narrative or commentary. The text is written in a cursive style (sōsho) and is arranged in several columns around the illustration.



Handwritten Japanese text in vertical columns, continuing the narrative or commentary from the left page. The text is written in a cursive style (sōsho) and is arranged in several columns around the illustration.







国立国会図書館 いろは歌ニツ巴 6巻 207-915



ガラス使用

