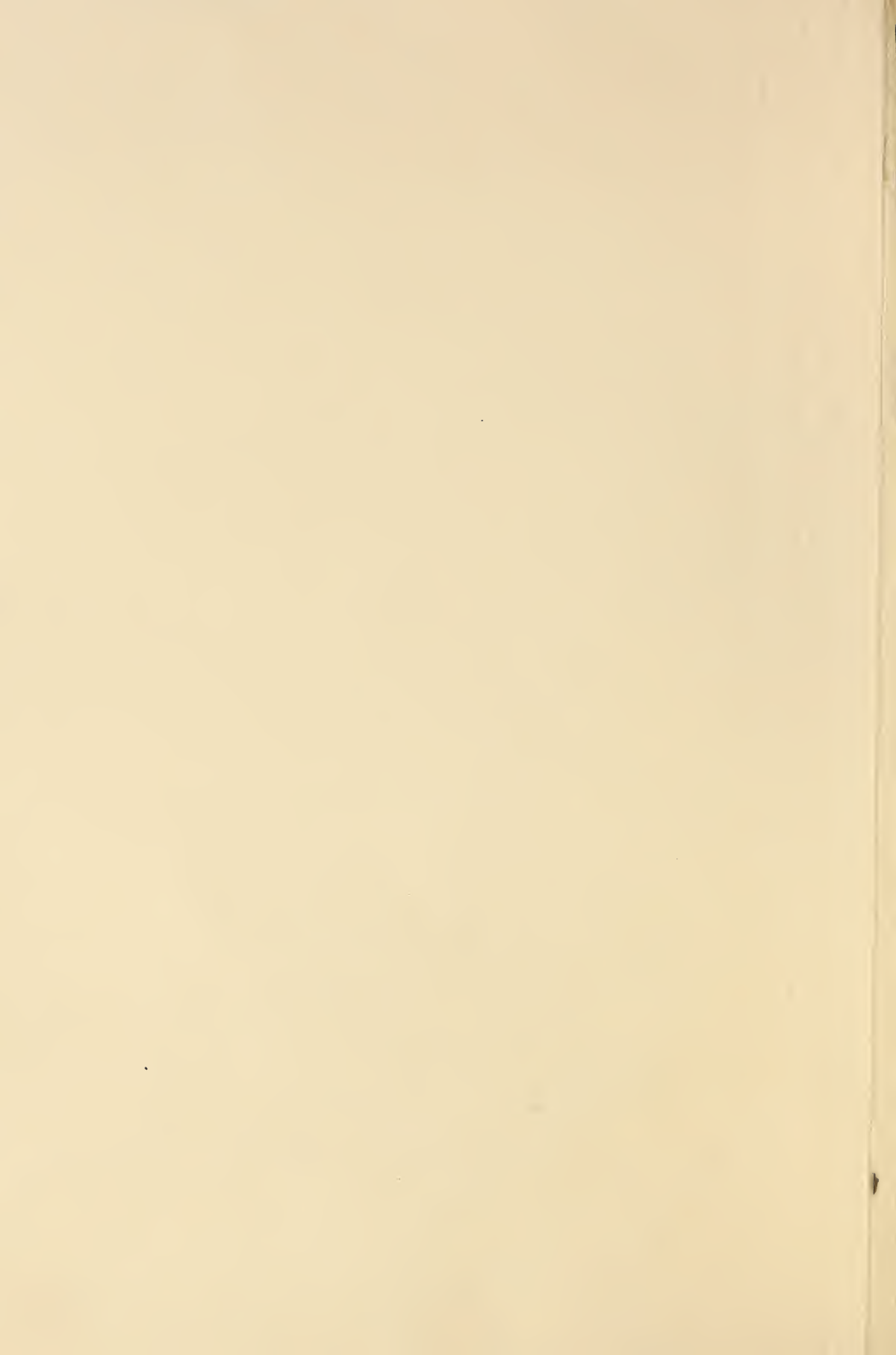


Historic, Archive Document

Do not assume content reflects current scientific knowledge, policies, or practices.



62.73

1-24-1923

Prices Effective Spring of 1923

THE ADAMS COUNTY NURSERY and FRUIT FARMS

ESTABLISHED 1905



HOME OF

H. G. BAUGHER, Proprietor

Bendersville Station

Aspers Post Office, Pa.

Telegraph:
Shipping Address: } BENDERSVILLE STATION, PA., G. & H. R. R.
Express Office: }

BELL AND UNITED PHONES, BIGLERVILLE EXCHANGE

COMMONWEALTH OF PENNSYLVANIA

DEPARTMENT OF AGRICULTURE. BUREAU OF PLANT INDUSTRY

NURSERY CERTIFICATE No. 171 (RESIDENT)

THIS IS TO CERTIFY THAT the nursery premises of H. G. Baugher, Aspers, Adams Co., Pa., including 20 acres of stock, have been officially inspected and passed in accordance with the provisions of an Act of Legislature approved the 29th day of June, 1917, and as amended and approved April 26, 1921.

Permission is hereby granted this nursery to sell and ship nursery stock which has been officially inspected, for the year ending September 30, 1923; provided that a tag on which a copy of this certificate is printed must be attached to each package, bundle, bale, box or carload lot so shipped.

This Certificate is void after October 1, 1923, but may be revoked for cause.

Issued at the State Capitol, Harrisburg, Pa., August 24, 1922.

J. G. SANDERS, Director

Buy your fruit trees in Adams county right from the Adams County Nursery & Fruit Farms in the greatest fruit growing county of the State of Pennsylvania where the trees are grown on good fruit soil, hardy and thrifty. The proprietor of the Adams County Nursery & Fruit Farms is endorsed by the leading fruit growers as being honest and reliable and all orders placed will receive the best of care and attention. The Adams County Nursery & Fruit Farms is located half mile from Bendersville Station with R. R. siding on packing grounds. Bendersville Station is located 10 miles north of Gettysburg, Pa., and 35 miles southwest of Harrisburg, Pa., on the Gettysburg & Harrisburg Railroad (Branch of P. & R.) Can't you arrange to visit nursery? State road from Harrisburg by way of Carlisle to Gettysburg running close by nursery and fruit farms.

Cutting of all buds is superintended by the owner of Nursery and Fruit Farms and best of care is taken to have every variety true to name and have many pleased customers who are willing to bear witness to this fact whenever called upon. May I have your order? My prices are right and stock will please. I pay special attention to growing fruit trees and sell them in large and small quantities at almost first cost of growing. Employing no agents, selling direct to the planter. Saving this extra cost to purchaser. I want every customer well pleased. Orders are now being booked for shipment Fall 1922 and Spring 1923.

Certificate of inspection accompanies each shipment.

PRICES ON PEACH TREES 1 YEAR OLD ASSORTED KINDS

	Each	Per 10	Per 100	Per 1000
Extra select 4 to 6 ft. high	30c	\$2.50	\$19.00	\$175.00
First Class 3 to 4 ft. high	25c	\$2.25	\$17.00	\$160.00
First Class 2 to 3 ft. high	20c	\$1.80	\$15.00	\$140.00
First Class 18 inch to 2 ft. high	18c	\$1.60	\$12.00	\$100.00

These peach trees are an exceptionally fine lot of trees of good large size, healthy and thrifty and is sure to please. Order of ripening is here given.

May Flower. Bright red cheeked, earliest market peach, 1st of July.

Carman, large creamy white skin, covered mostly red, tender, juicy, good commercial shipper, July 15th to August 1st.

Hiley (Early Belle). The earliest commercial freestone white peach. It resembles Belle of Georgia, with a quality superior to most of its white-fleshed competitors. The pretty red cheek and good shipping qualities make it very popular for early market. Mid-July to Aug. 1st.

Champion, a large handsome, early variety, creamy white with



Block of One-Year Peach Trees

red cheek, sweet, rich and juicy, hardy and productive, August 1st.

Ray. Resembles Bell of Georgia, large, fine flavor, fine canner, good shipper, Aug. 10 to 25th.

Bell of Georgia. Very large in white with red cheek, flesh, white and firm, excellent flavor, fine shipper, Aug. 1st to 15th.

Mountain Rose. Large red, flesh white, juicy, excellent one of the best August 1st to 15th.

Fulton. Fine large creamy white, covered red, heavy bearer, fine market peach, August 10th to 25th.

Elberta. One of the greatest commercial yellow peaches known, good shipper. Tree hardy and good grower, August 15th to September 1st.

Niagara. A very large yellow peach said by some to be as good as Elberta, ripening close after Elberta. Good commercial variety.

Fordes Late. White, one of the good late white peaches, Sept. 15th to Oct. 1st.

Globe. One of the large yellow peaches of fine quality. Sept. 1st to 15th.

Crawfords Late. Large yellow, fine canning and market peach, Sept. 1st to 15th.



Budding Block of Young Peach Trees

Iron Mountain. One of the fine white late peaches, splendid market peach. Tree hardy, strong grower, Sept. 20th to Oct. 1st.

Fox Seedling. White partly covered red, one of the fine flavored peaches, good size and market peach, 1st to middle of Sept.

Beers Smock. One of the large yellow peaches, good canning peach, Sept. 15th to Oct. 1st.

PRICES ON STANDARD APPLE TREES 2 AND 3 YEARS OLD ASSORTED KINDS

	Each	Per 10	Per 100	Per 1000
Extra select 5 to 7 ft. high	45c	\$4.00	\$35.00	\$300.00
First class 4 to 5 ft. high	40c	\$3.50	\$30.00	\$275.00
First class 3 to 4 ft. high	35c	\$3.00	\$25.00	\$250.00

These are a fine lot in apple trees. Nice clean, thrifty trees, well grown. Varieties are here given and time of ripening.

Yellow Transparent. Earliest and best, white, tender, juicy, sprightly, sub-acid, grows upright, bears young, making good filler, July 1st to 15th.

Early Harvest. Medium, pale yellow, tender, juicy, July 1st to 15th.

Early Ripe. Of good fair size, pale yellow, ripens little later than early harvest.

Duchesse of Oldenburg. Good large size golden streaked red. sub-acid, fine shipper and market apple, last of July.



Block of Two-Year Apple Trees

Wealthy. Good medium size, round or pointed, almost solid red, flesh white, crisp, juicy, bears young, August 1st to 15th.

Summer Rambo. Very large in size, greenish red striped, tender, juicy, tree strong grower, August 15th to September 15th.

Smoke House. One of the good old kind welcomed in every home, ripens in September and can be kept in common storage late into the winter.

Grimes Golden. Of good size, yellow, of high quality, ripens in September, can be kept late into the winter.

Jonathan. Very red smooth of good size, fine quality, ripens in September, can be kept in common storage late in the winter.

McIntosh. Bright, deep red, fine quality, ripens in September and keeps late into the winter in common storage.

Fallawater. Large yellowish green, productive, sometimes called pound apple, ripens in September, keeps late into winter in common storage.

Stayman Winesap. Large size, mostly covered red, crisp and juicy, tree a strong grower, said to be one of the best apples for orchard planting east of the Mississippi, ripens in October and ready for use soon after picking, keeps late into spring.

York Imperial. Winter, medium to large, yellow shaded red, firm, juicy, sub-acid, an excellent canning and shipping apple, one of the good apples for export, October.

Baldwin. One of the fine winter apples. Succeeds well in the Northeastern States.

Rome Beauty. Winter, large, round, mottled and striped in different shades of red, flavor and quality fine. Good late keeper.

Delicious. (Sometimes called the Stark's Delicious), Winter apple, one of the fine quality apples. Brilliant dark red shading to yellow at the blossom end, growing somewhat in quince shape, very attractive.

Paragon. (Mammoth Black Twig), Large dark red, hardy and productive, vigorous grower.

Paradise Winter Sweet. Large, creamy, rosy cheeked, one of the best sweet winter varieties.

PRICES ON 1 YEAR STANDARD APPLE TREES

	Each	Per 10	Per 100
Extra Select 4 to 5 ft. high	45c	\$4.00	\$35.00
First Class 3 to 4 ft. high	40c	\$3.50	\$30.00
First Class 2 to 3 ft. high	35c	\$3.00	\$25.00

VARIETIES OF 1 YEAR APPLE TREES

Stayman Winesap	York Imperial
Grimes Golden	Yellow Transparent
Williams Early red, fine red summer apples, Aug.	McIntosh
Smoke House	Early Ripe
Wealthy	Duchess of Olden berg

STANDARD PEAR TREES

	Each	Per 10	Per 100
5 to 6 ft. high, extra select	\$1.00	\$9.00	\$85.00

VARIETIES OF STANDARD PEARS

Bartlet. Large buttery, juicy, high flavored, great bearer. This sort has long been considered one of the choicest canning varieties, as well as a favorite for all other uses Aug. and Sept.

Claps Favorite. Very large, yellow and dull red, with russet specks, melting, rich. August.

Seckel. Small, skin rich yellowish brown, when fully ripe,

with deep brownish red cheek; flesh very fine grained, sweet, juicy, melting, buttery; one of the richest and highest flavored pears. Equally popular for dessert and pickling. Sept., Oct.

Kieffer. Large size, handsome appearance and remarkable keeping qualities. Fine for making butter and canning.

Anjou. Large buttery, melting, rich, vinous. The best late fall and early winter pear. Oct to Jan.

Koonce. Medium, yellow with carmine cheek. A profitable early market variety, July.

CHERRY TREES SWEET AND SOUR

Extra select 5 to 7 ft. high, per tree, \$1.00; per 10, \$9.00; per 100, \$85.00.

VARIETIES OF CHERRY TREES

Black Tartarian. Very large, dark red cherry, becoming black when over ripe, sweet, juicy, June.

Governor Wood. Large, light red, juicy, rich, delicious. Tree healthy and productive, sweet, June.

Napoleon. Large, pale yellow or red, firm, juicy, sweet and productive, July.

Windsor. Large, liver colored, flesh remarkable, firm and of fine quality, tree hardy and prolific. A valuable late sweet variety. July.

Large Montmorency. Large, red, productive, one of the best varieties of sour cherries.

Baldwin. Large, round, slightly sub acid, sweetest and richest of the sour varieties, June.

Early Richmond. Medium, dark red, melting, juicy, sprightly, rich, acid, June.

Dyehouse. A sure bearer, largely planted for early market; ripening week before Early Richmond, which it closely resembles, June.

PLUM TREES 1 YEAR OLD

4 to 6 ft. high 85c; per 10, \$7.50; per 100, \$65.00.

Abundance. One of the great bearers, fruits of lemon to red color, sweet and juicy, August.

Satsuma Plum: of good size, flesh, blood red, sweet. Ripe August 15 to September 1.

Burbank. Most profitable among growers for market, ripens 10 to 14 days later than Abundance, cherry red.

Climax. One of the best of large, early sweet plums ripens ahead of other plums, very valuable market plum, July.

German Prune. Large, dark purple, sweet, good, one of the most desirable for canning, Sept.

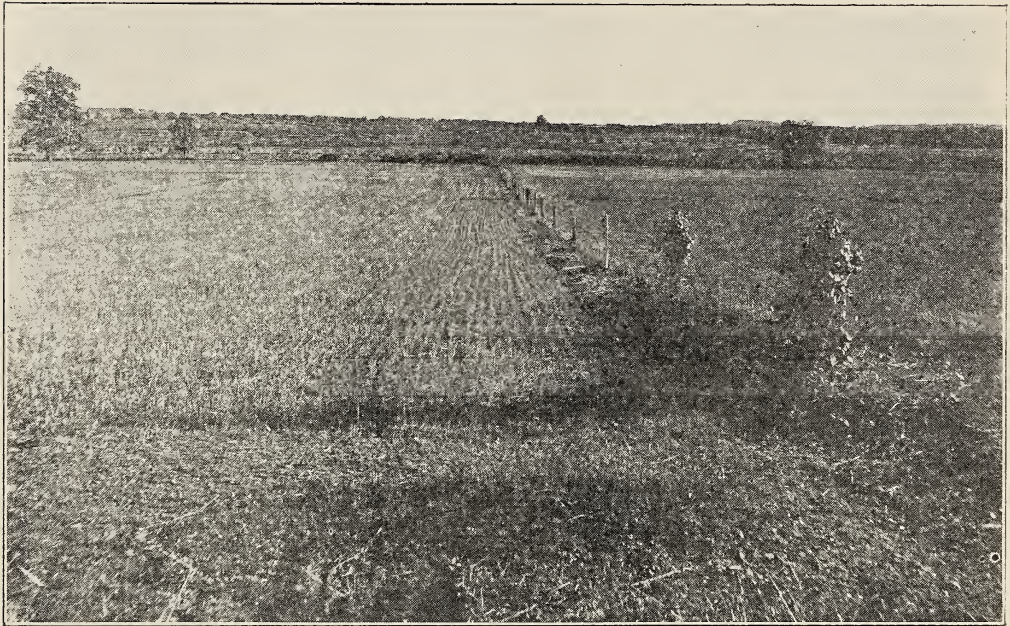
Red June. One of the vigorous, upright growers, productive fair size, Vermillion red, ripens a week ahead of Abundance.

Shirow. One of the large yellow plums, sweet, fine shipper and market plum, August.

APRICOT TREES 1 YEAR OLD

4 to 6 ft. high, per tree 80c each.

Early Golden. Orange color, juicy and sweet.



Birdseye View of One of Adams County Nursery and Fruit Farms

QUINCE TREES 2 YEARS OLD

4 to 6 ft. high, each \$1.00; per 10, \$9.00; per 100, \$85.00.

VARIETIES OF QUINCE TREES

Orange. Fruit large, bright yellow, of excellent quality.

Champion. A prolific and constant bearer, oval fruit, averaging larger than Orange and long keeper, later than Orange.

Meech Prolific. A vigorous grower and immensely productive, fruit large, orange yellow, delightful flavor, fine cooking qualities.

Plant 15 to 18 feet apart.

GRAPE STALKS 1 AND 2 YEARS OLD

VARIETIES OF GRAPES

35c each; per 10, \$3.00; per 100, \$25.00.

Brighton. High quality, handsome, large one of the most popular reds.

Concord. The leading market, vineyard and home garden variety, dark blue, fine quality.

Delaware. The exquisite little American dessert grape, very highest quality.

Green Mountain. Probably finest quality in this class, a home garden variety, not profitable commercially, ripens very early.

Worden. Resembles Concord, but is sweeter, larger in bunches and berry, week to 10 days earlier than Concord.

Niagra. The standard white grape, bunches and berries larger than Concord, very sweet, ripens with Concord.

Moors Early. Bunch medium, berry large round, vine exceedingly hardy, ripens 3 weeks ahead of the Concord, desirable for early market.

Plant 6 to 8 feet apart in rows, making rows 8 ft. apart.

CURRENT STALKS 1 AND 2 YEARS OLD

40c each; per 10, \$3.50; per 100, \$30.00.

Perfection. Beautiful, bright red, very productive, one of the best home and market varieties.

Fay. One of the long leading market varieties for garden and market, red variety.

Plant 4 to 5 ft. apart.

GOOSEBERRIES 1 AND 2 YEARS OLD

40c each; per 10, \$3.50; per 100, \$30.00.

Downing. Large, handsome, pale green and of splendid quality for both cooking and table use, bush a vigorous grower and usually free from mildew.

Josselyn. Large size, smooth, prolific and hardy, wonderful croper with bright, clean, healthy foliage.

Plant 3 to 4 ft. apart.

RASPBERRIES

80c per 10, per 100, \$6.00.

Cumberland. A healthy, vigorous grower, growing up stout, stalky, well branched canes that produce immense crops of magni-

ficent berries, fruit very large, firm, the most profitable market variety, mid season.

Plum Farmer. One of the profitable early black varieties of good size.

St. Regis. A genuine, practical, profitable, continuous to fall bearing red raspberry. Fruit begins to ripen with the earliest and continues on young canes to October.

Plant in rows 5 ft. apart and 3 ft. in rows.

BLACKBERRIES

Each 15c, per 10, \$1.00, per 100, \$8.00.

Eldorado. Stalks are vigorous and hardy enduring the winter. Berries large, jet black, borne in large clusters and ripen well together, very sweet and melting and pleasant to the taste, have no hard core and keep 8 to 10 days after picking in good condition.

Snyder. Enormously productive, medium sweet, no hard sour core, the leading variety where hardiness is the consideration, ripens early.

Plant in rows 6 to 7 ft. apart, 3 to 4 ft. rows.

ASPARAGUS 1 AND 2 YEARS

Per 10, 40c, per 100 \$1.50.

Conovers. A standard variety of large size, tender and excellent quality.

Palmetto. A very early variety, even regular size of excellent quality.

Plant in rich soil, dig trench and set in 12 to 18 inches apart, covering crown 2 inches below surface.

CALIFORNIA PRIVET

12 to 18 inches high 60c per 10; per 100, \$4.00.

18 to 24 inches high 80c per 10; per 100, \$5.50.

Plant in rows 6 to 12 inches apart, using as many rows as desired. To make hedge heavy use 2 or 3 rows making rows 6 to 8 inches a part .

NORWAY MAPLE

7 to 9 ft. high, each \$1.50, per 10, \$14.00, per 100, \$125.00.

Norway Maple makes the finest of shade trees for city or country.

TERMS

Cash with order or satisfactory reference. 3 per cent discount when cash accompanies orders. Above prices cancel all former prices.

PACKING OF NURSERY STOCK

Will be done in boxes or in bales, protecting the roots and trees well in shipping. These prices include the packing delivered on board cars Bendersville Station. No charge for packing or delivering to railroad.

Will accept all orders upon condition that they shall be void should any injury befall the stock from hail, storm or other causes over which I have no control.

RESPONSIBILITY

All articles after being delivered to railroad in good condition are at the risk of the purchaser.

Certificate of Nursery Inspection accompanies each shipment of nursery stock.

SHIPPING

Shipment of nursery stock begins for Fall about November first; for Spring about April first. Orders are now being booked for Spring shipment.

Purchasers are requested to state whether they wish stock shipped by freight or express or by the Delivery Pre Paid List.

DELIVERY OF FRUIT TREES AND STALKS PRE-PAID

Delivery to any express office or parcel post office in State of Pennsylvania will be made on fruit trees, vines and shrubbery by adding to the list price per tree, vine or stalk as given here.

Fruit trees 1 to 5 trees Add 10c per tree
Fruit trees 6 to 10 trees Add 8c per tree

Fruit trees 11 to 20 trees Add 6c per tree
 Fruit trees 21 to 50 trees Add 5c per tree
 Fruit trees 51 to 100 trees Add 3c per tree
 Fruit trees 100 trees and over Add 2c per tree
 Vines, stalks and shrubbery 1c each

Right by the nursery will be reserved to ship the most convenient way express or parcels post.



Packing House and Barrel Factory

APPLE BARRELS

Being located in the great fruit growing belt of Adams County I manufacture large quantities of APPLE BARRELS of good quality and can furnish them in car load lots or less than carload lots at reasonable prices. Write for prices on apple barrels.

THE ADAMS COUNTY NURSERY & FRUIT FARMS,

H. G. Baugher, Prop.

Aspers Post Office

Bendersville Station, Pa.