

F 159
.L45 S7
Copy 1

Souvenir
of
LEBANON,
PA.



SOUVENIR OF...

...LEBANON, PA...



FROM PHOTOS BY L. G. HARPEL.



THE ALBERTYPE CO.
BROOKLYN, N. Y.

PUBLISHED AND COPYRIGHTED, 1905, BY
L. G. HARPEL, KODAKS, CAMERA SUPPLIES,
PICTURES AND PICTURE FRAMES,
8TH & WILLOW STS.—38 & 40 No. 8TH ST.,
LEBANON, PA.

F159
L45S7





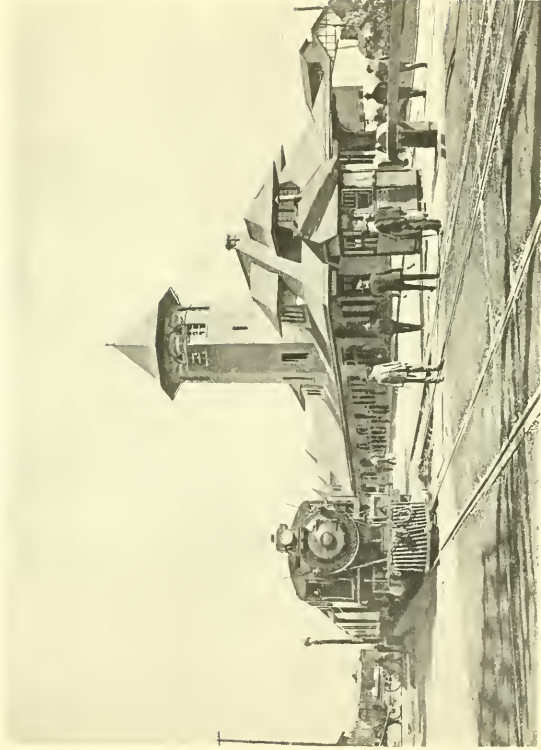
CITY HALL.



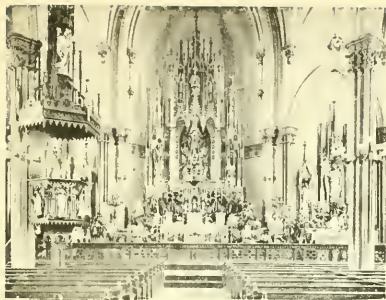
COURT HOUSE.



CORNWALL AND LEBANON R. R. DEPOT (PENNA. LINES)



PHILADELPHIA AND READING DEPOT.



INTERIOR.

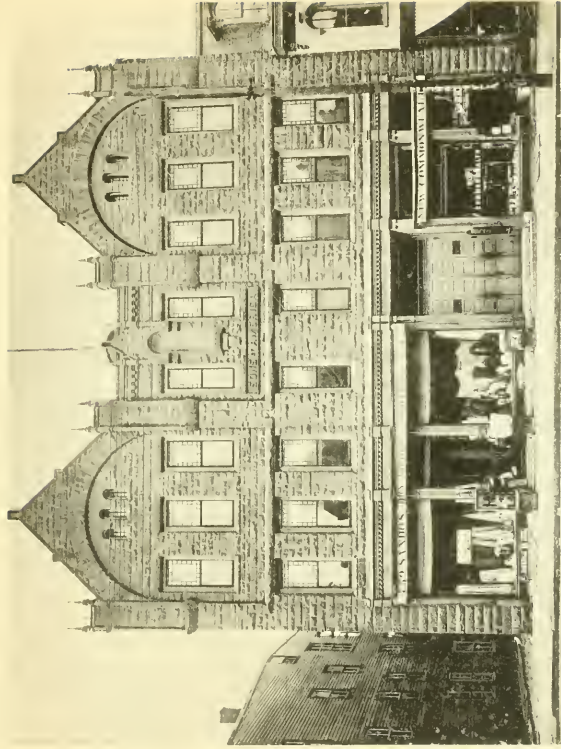
ST. MARY'S CATHOLIC CHURCH.

PEOPLES BANK BUILDING.

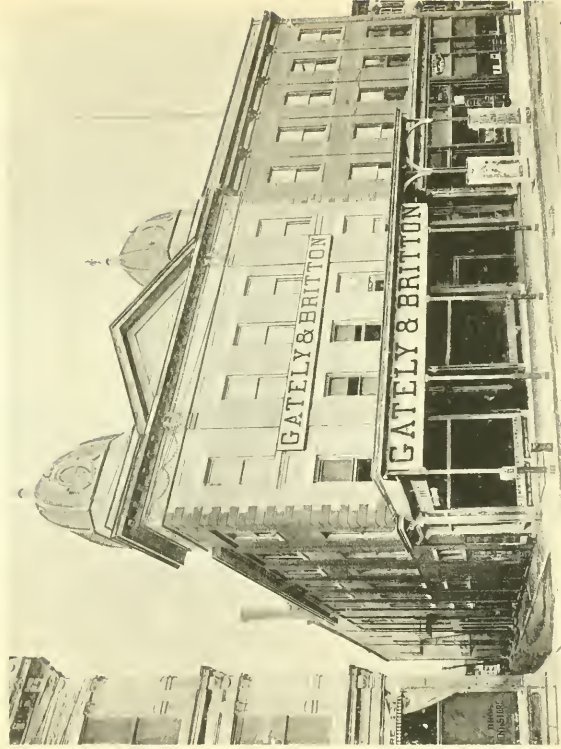
8TH AND CUMBERLAND STREETS, LOOKING NORTH.



CUMBERLAND STREET, WEST FROM 8TH STREET.



SONS OF AMERICA HALL,



OPERA HOUSE.



SCHOOLS.



LEBANON NATIONAL BANK.

EAGLE HOTEL.

9TH AND CUMBERLAND STREETS, LOOKING EAST.



GOOD SAMARITAN HOSPITAL.

NURSE'S HOME.



RESIDENCES.



ST. LUKE'S P. E. CHURCH AND RECTORY.



FIRST
REFORMED



ST. MARK'S REFORMED.



ZION
LUTHERAN

CHURCHES.



ST. JAMES LUTHERAN



ST. JOHN'S REFORMED



SALEM LUTHERAN CHAPEL



SEVENTH STREET LUTHERAN



CHRIST PRESBYTERIAN



TRINITY LUTHERAN

CHURCHES.



OLDEST TUNNEL IN THE UNITED STATES, BUILT 1822-3 FOR UNION CANAL—739 FEET LONG.



CENTENARY M.E.



TRINITY U.B.



SALEM U.B.



MORAVIAN



FIRST UNITED EVANGELICAL



ST. PAUL'S EVANGELICAL

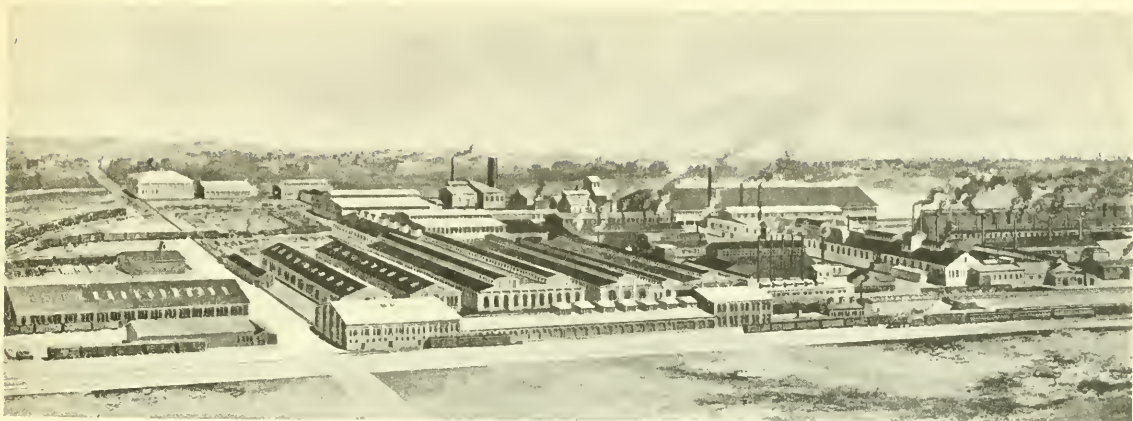
CHURCHES.



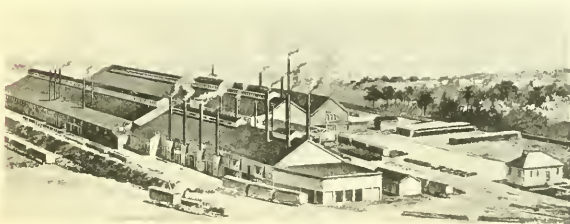
NUTTING BUILDING.



KRAUSE BUILDINGS.
8TH STREET MARKET HOUSE.



CENTRAL WORKS.



EAST WORKS.



WEST WORKS.

AMERICAN IRON AND STEEL MFG. CO'S PLANT.

PENNA. STEEL CO. N LEBANON FURNACES



PANORAMA OF LEBANON, PA.



Photo by
Harpel
LEBANON PA.



PANORAMA OF LEBANON, CA



R 12 1905

LIBRARY OF CONGRESS



0 014 365 203 8

