

WILL SEE SANTA FOR FIRST TIME

Adopted Son. With 'Mother,' Comes From Germany to Meet War 'Daddy'

By W. F. SULLIVAN For International News Service. KANSAS CITY, Mo., Dec. 22.—Willie Dunham, 5 years old, planned while in his swaddling clothes at Coblenz, Germany...

Learns English Willie, who never had known a mother or father, has been in his country only a few days. He talks in German as he plays with his toys on the floor of his home...

Left in Germany Just as story books would tell a romance followed and there was a marriage. The marriage, however, was not recognized by army transport officials...

A small sugar-cake, known as arron, in Spain, is made from the smaller and broken kernels of almonds.

Bees recognize many colors. There's No Price You Meet That We Cannot Beat

GLOBE BUILDERS' SUPPLY CO. Wholesale and Retail! ROOFING 1st grade Slate Roofing, with nails and cement, only \$1.75 a roll...

Schumacher Plaster Board Only \$30.00 Thous. 48 inches wide, all lengths, selected seconds; edges and one side perfect.

Wall Paper 1c a Roll With border to match, at 10c a yard. We are closing out all of our 1923 patterns "cheap cost."

Inlaid Linoleum Only 90c Sq. Yd. FLOOR COVERING 65c sq. yd. Window Shades As Low as 50c Paint \$1.00 Gal.

Special lot colors, gal. \$1.00 Standard House Paint \$1.75 Reg. Value, \$2.00—All colors Never-Leak Roof Paint, gal. 40c Dutch and Stucco Brushes at Greatly Reduced Prices

Goodyear Garden Hose, 5-ply, only 9c foot COMPLETE WITH COUPLINGS. Electric Light Globes 10 to 50 Watt Only 30c

Sash and Doors MADE TO ORDER. We furnish expert Painters' Paper Hangers and Decorators. Estimates Free. All Merchandise Guaranteed.

Free Delivery Mail Orders Filled Promptly. GLOBE BUILDERS' SUPPLY CO. Open 7 to 9 P. M. Sat. to 9 P. M. 214 W. BROADWAY, Opposite Post Office. PHONE GLENDAL 1450.

PLAY IS STAGED BY GIRL SCOUTS

'The Lost Prince' Presented At K. of C. Auditorium By Troop Four

"The Lost Prince," as presented by Troop 4, Glendale Girl Scouts, at the Knights of Columbus auditorium Friday night, proved both an artistic and a financial success.

The story of the play is as follows: Queen Ermengarde (played by Josephine Moore) is in danger of her life, since the people are rising against her and desire to place the "most despotic" back upon the throne...

Cost of Characters The cast of characters was as follows: Carlin, the jester for the queen, Catharine Doll; Hilda, the princess, Beatrice Smith; Ermengarde, the sad queen, Josephine Moore; ladies in waiting, Anna Katigan, Ruth Berndt; Roland, Katharine Kelly; Lord Gournet, Mildred Bowler; Sholto, the page, LaVerne Wolferm; the messenger, Mary Jane Morgan; pages to the queen, Alice Brennan, Elizabeth Moore; Wilder, the wise man, Peggy Clark; the abbess, Madeline Guglielmino; Sister Agnes, Dorothy Chappius; Sister Anthony, Virginia Bandino; Nuns, Betty Heustis, Genevieve Barr; Knights, Mildred Bowler, Katharine Kelly; Squires, Mary Virginia Bryan, Vivian Russell; a domineer, Betty Heustis; page to the prince, Genevieve Gannett.

'PHONE GIRLS IN KIDDIE COSTUMES

'Hello, Girls' Stage Party and Dance in Social Hall Of Local Office

"Kid Costumes" were the fashionable dress worn by the local telephone operators when they entertained last night in the social hall of the local office with a Christmas party.

Later in the evening a group picture was taken by Glenn R. Dolberg of the Dolberg Studio. Dancing and Games The girls have been raising money during the year for their Christmas work, and last night it was decided to use the money for preparing baskets of food and for purchasing clothing for several needy families in Glendale.

Holiday Cheer Is Grabbed By Raiders

Another pre-Christmas raid by Chief of Police Fraser, Captain Loving and Lieutenant Royle last night landed R. L. Brown, 602 South San Fernando road in jail, along with the capture of alleged illicit whiskey and wine.

Pays \$250 Fine For Driving While Drunk

Billie Leonard, an employee of the Southern California Edison company at camp No. 9, who was arrested December 13 by Officer McLean on Los Feliz road and charged with driving while under the influence of liquor, this morning pleaded guilty before Judge F. H. Lowe to a charge of reckless driving and was fined \$250.

CHANGES IN CITY OFFICES PLANNED

Building Superintendent to Occupy New Location On East Broadway

After Monday, December 24, the office of H. C. Vandewater, municipal building superintendent, will be located in the two rooms formerly occupied by the American Legion at 610-A East Broadway, across from the city hall.

Staff Has Increased "From a small beginning the office now gives employment to eight clerks and inspectors in addition to myself, and is one of the most active of all city departments. We will be open for business as usual Monday morning."

TOTAL'S NEARING \$10,000,000 MARK

Yesterday's Building Permits Send Figures for Year Up to \$9,868,918

Just \$131,082 is all that stands between Glendale and the ten million dollar goal for 1923. Permits issued yesterday at the office of H. C. Vandewater, municipal building superintendent, totaled \$67,100, raising the December amount to \$648,759, and the yearly total to \$9,868,918.

Table listing building permits with details: Mrs. Elizabeth Aiple, 35 apartment court, 230-236 South Adams, \$27,500; Alida M. Ward, 9 room duplex and garage, 417-419 W. 7th, 7,500; W. E. Hermanson, 8 rooms and garage, 179 North Pacific, 7,500; E. V. Jellison, 6 rooms and garage, 88 Boynton, 6,000; A. E. Wright, 5 rooms, 765 Palmer Drive, 3,500; Mrs. J. B. Treasler, 310 West Loraine, 3,000; L. Fla., 4 rooms, 620-A West Elm, 2,700; Mrs. Newhall, alterations, 701 East Colorado, 1,000; D. C. Dunbar, 3 rooms, 1172-A Alameda, 1,000; D. C. Dunbar, 3 rooms, 1183-A Alameda, 1,000; A. E. Sauter, garage, 1925 West 88th, 500; Harlan S. Page, Jr., additional cost, 412 East Palmdale, 600; Harlan S. Page, Jr., additional cost, 1215 South W. M. Drew, garage, 317 Milford, 400.

Gold Dredgers Strip Whole Town of Soil

TRINITY CENTER, Dec. 22.—Gold dredgers operating in this historic mining town threaten to accomplish its disappearance. Already Vollmer's Hotel, a landmark in the early days is a pile of rock—the debris deposited by the dredger after it has extracted the gold from the soil.

British Shipping Is Still Under Normal

LONDON, Dec. 22.—Although latest import and export figures show that Britain's trade is on the up grade, her post-war shipping slump has not yet been dispensed—more than a million tons of shipping being laid up unemployed in home ports alone, according to statisticians.

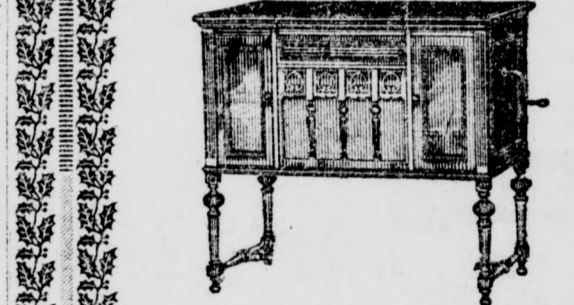
Does Not Freeze

Ordinary fresh water freezes at 32 degrees Fahrenheit, but before sea water can congeal it has to rid itself of salt. What happens when it does freeze is that as the ice crystals begin to form the salt begins to drop through the water, and when the sea water actually freezes—at about 3 degrees below fresh water-freezing—it is fresh.



Special Brunswick Outfits

- Model No. 101 Brunswick, with 20 selections \$52.50 at
Model No. 200 Brunswick, with 20 selections \$107.50 at
Console York Brunswick, with 20 selections \$157.50 at
Console Tudor Brunswick with 20 selections \$267.50 at



\$1 Secures Your Brunswick Open Evenings

A Brunswick Console Phonograph THE APPROPRIATE GIFT

—For Every Member of the Family —For Every Day in the Year

We Guarantee Delivery on Every Machine Sold Monday

Any Brunswick Is Excellent, but the Royal at \$115.00 with its divided flat top is the greatest of all for the price.

Glendale Phonograph Co. ARTISTIC Brunswick SHOPPE 126 SO. BRAND Glen. 476 Wm. Bode, Mgr.

PILFERING TOMB OF TUTANKHAMEN

Work Resumed in Valley of Kings After Several Weeks of Delay

LUXOR, Egypt, Dec. 22.—Science is again probing in the Valley of the Kings for the secrets that for thirty-five centuries have been interred in the tombs of the Pharaohs. Age-long sleep is being broken by vandal picks and shovels that the modern world may view the hoarded treasures of the old.

British Shipping Is Still Under Normal

LONDON, Dec. 22.—Although latest import and export figures show that Britain's trade is on the up grade, her post-war shipping slump has not yet been dispensed—more than a million tons of shipping being laid up unemployed in home ports alone, according to statisticians.

Does Not Freeze

Ordinary fresh water freezes at 32 degrees Fahrenheit, but before sea water can congeal it has to rid itself of salt. What happens when it does freeze is that as the ice crystals begin to form the salt begins to drop through the water, and when the sea water actually freezes—at about 3 degrees below fresh water-freezing—it is fresh.

Co-ed Wins Cup for Physical Excellence

BOSTON, Dec. 11.—Miss Mabel L. Phil, of New Britain, Conn., of the class of '24, has been awarded the Sarah Streeter Cup which each year goes to the "member of the senior class who is found at the time of her final physical examination to be in the best physical condition."

LION IDEA OF KNIGHTS

In the early days of chivalry armored knights emblazoned their armor with symbols, usually selecting the nobler beasts. Several of the early British kings selected the lion the king of beasts, and when King Richard the First used his private emblem on the royal official seal the lion became the national symbol of England and has remained so ever since.

GAS-Red Crown-GAS The Best on the Market Today THE NEW FORD OIL - ZEROLENE - F - 15c Qt., 2 Qts. for 25c, 5 Gals. \$2.40 WE WISH EVERYBODY A MERRY XMAS AND HAPPY AND PROSPEROUS NEW YEAR Central Supply Station F. H. Evarts, Prop., S. E. Cor. Broadway and Central Ave.

damaged

PART TWO

WOMEN SEEK CHAMPION HONORS

Fair Experts In Contest to Be Called Best Driver At Chicago Show

CHICAGO, Dec. 22.—Fifty-eight women competed recently in the annual curtain raiser of the Closed Car show staged under the auspices of the Chicago Auto Trade Association, for the title of champion woman driver of Chicago.

The entries were grouped into three classifications based on the price of the car driven. Silver cups were offered for the best scores in each class and a diamond medal was awarded the winner who finished with the fewest points against her.

They consisted of a thirty-mile circuit of the boulevards, during which the drivers had to conform to a secret schedule based on the proper speeds at which to cover the course, as well as observe all traffic laws, courtesy regulations and safety rules. Other tests were in braking the car, straight driving and backing through a lane of barrels.

Lane of Barrels
An alley 200 feet long and eight feet wide was made with empty barrels, and the contestants were forced to back their cars through its winding course without touching a barrel. An overturned barrel meant a penalty. Driving along two ten-inch planks for sixty feet constituted the straight and narrow test that few finished perfectly.

Score Nearly Perfect
But three penalties were checked against her. So slight were her infractions of the rules that the judges considered her performance well high perfect.

A brougham driven by Miss Lois Dalley, winner of last year's championship, won second place among the cars of its price class, just two points behind the winner.

'GAS' CONSUMPTION

Automobiles in the United States now consume nearly 6,000,000,000 gallons of gasoline a year. This amount of "gas" would fill a lake a mile deep and covering three and a half acres.

WATCH CAR LOAD

A car should never be overloaded, as the excess weight is apt to put too much strain on the tires.

State Registration Figures Indicate Industry's Growth

The growth of the automobile industry in the state of California is reflected in the comparative figures of registrations given out by Will H. Marsh, chief of the division of motor vehicles, for the month of November.

The total registrations for the month just passed is given as 65,981 against 48,780 for the corresponding month last year. Collections for the same period of 1923 are \$115,856.99. In November 1922 \$87,945.27 was collected.

Southland Leading Volume Once More

Southern California fared much better than did the northern section of the state in the recorded increases in auto registrations for November. The south netted a gain of 36 per cent for the month. It disposed of 14,084 cars and trucks compared to a volume of 10,332 during November of 1922.

Northern California concluded the month with a 4 per cent gain. There were 7326 new automobiles and commercial motor vehicles bought in the northern counties in contrast to 7,033 a year ago.

Increased passenger car business in the state amounted to 24 per cent. The total was 19,477 against 15,604 in November, 1922. In the north the passenger car gain was equivalent to 6 per cent as the figures of 6654 show, compared to 6268.

Southern California's passenger car gains were 37 per cent better than in November, 1922. The figures read, 12,823 compared to 9338.

Truck sales gained 9 per cent in the state. There were 1933 sold last month in contrast to an aggregate of 1761 in the same month a year ago.

Again, Southern California produced an increase by gaining to the extent of 20 per cent when it sold 1261 trucks in comparison to a November, 1922, volume of 996.

Northern California is charged with a loss of 12 per cent. There were 672 trucks sold last month while during the same time in 1922, 765 were bought.

'JAY WALKING' LAW

A "jay-walking" ordinance is enforced in Milwaukee, Wis., and pedestrians are required to cross streets only at intersections.

SCHOOL FOR VIOLATORS OF LAWS

Kansas Instructs Reckless Drivers How to Guide Cars in Traffic

By W. F. SULLIVAN
For International News Service
KANSAS CITY, Dec. 22.—Over on the Kansas side, across from this city, bad boys who drive their motor cars recklessly to the hazard of pedestrians are taught to know and do better.

Establishment of a night traffic school where violators of traffic ordinances are taught the rules of riding, driving and guiding their cars through the streets of the city has proven an effective means of curbing reckless driving, authorities say.

Joseph Lynch, assistant city attorney is teacher. He becomes very stern with the boys when they don't do their "home work" correctly.

Minor violators, whose offenses are not too serious, are given continuances of their cases and sentenced to go to school on promise that they attend classes regularly and mind the teacher.

The night school class is held one night each week with a one-hour session. Each student is given the traffic regulations to study and must commit to memory the most essential sections of them.

Students Punished
For failure to learn his lesson in detail the "student" is punished by being given the alternative either of paying a heavy fine or making a promise to continue faithful study until he has the particular sections he is given to memorize so he can recite them "by heart."

Good boys, who learn their lessons promptly and are good in deportment, are graded by stiff "exams" and given indefinite continuances of their cases.

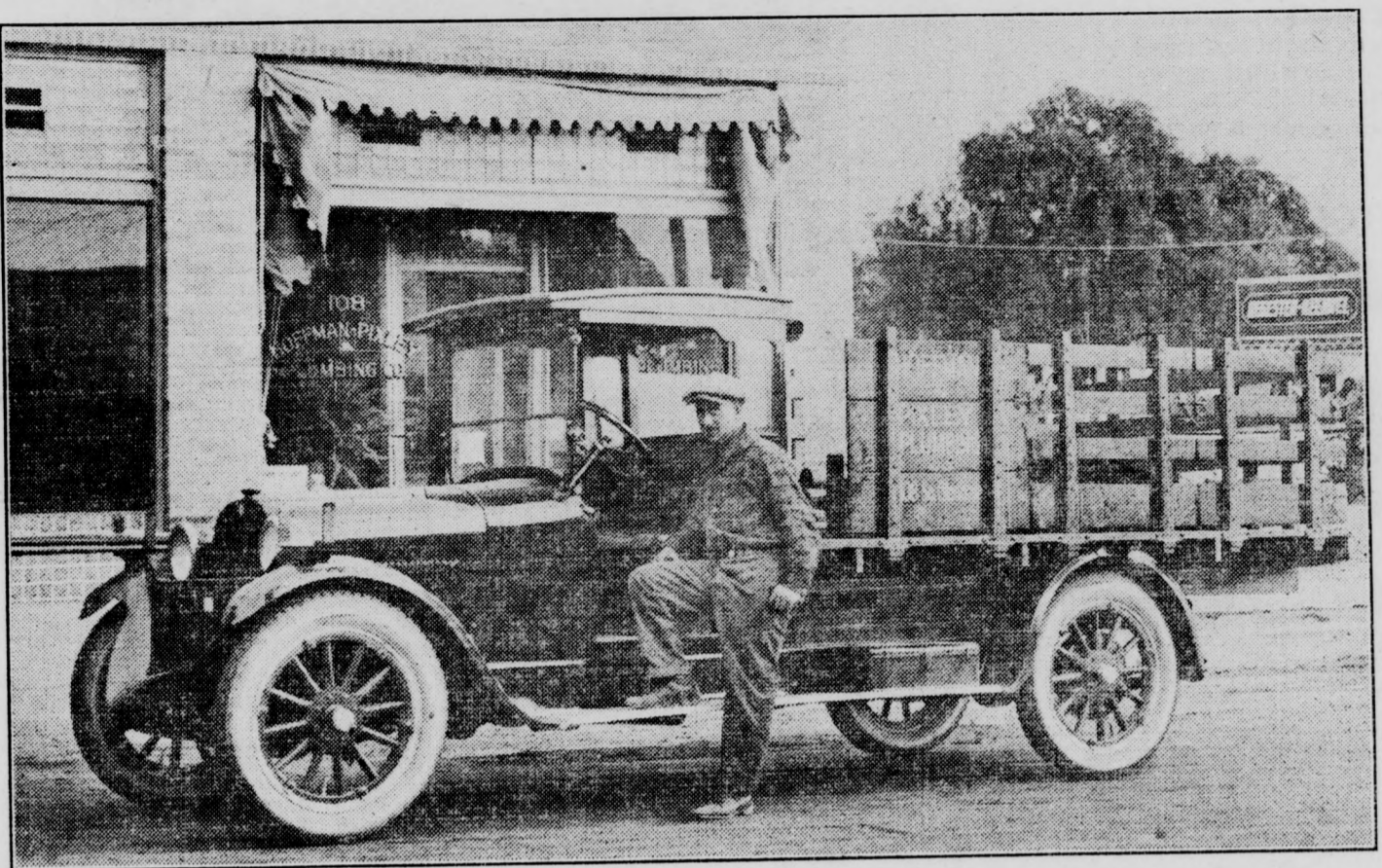
One of the speeders' school "students" recently was given a taste of the trials and troubles of a police officer. "Teacher" Lynch gave him as part of his "home work" an assignment to take the place of a traffic officer for half an hour.

The "student" reluctantly took the officer's whistle and stepped into the center of the street to be "punished." A little awkward and nervous at first, he finally directed traffic like a veteran, and when his "time was up" teacher was satisfied that he was sufficiently punished and dismissed him from school.

The school has a large number of regular students, and Judge H. S. Roberts, police judge, who constructs on (Continued on Page 2)

DODGE TRUCK GIVES EFFICIENT SERVICE FOR PLUMBING FIRM

R. E. Corrigan, Local Dealer, Puts Out Vehicle That Receives High Praise For Work



Here's a picture of a specially built Dodge truck in use by Hoffman & Pixley Plumbing company. It was built on a standard Dodge chassis, bought from R. E. Corrigan, 116 West Colorado, local Dodge agent. The plumbing company has nothing but the highest praise for the service being given by the Dodge.

Jimmy Murphy May Quit Racing Game

Easily the most conspicuous actor on the automobile racing stage following the fashion of Adalina Patti, Sarah Bernhardt and other famous footlight favorites, Jimmy Murphy announces his "farewell tour" of the wooden bowl and "positively last appearance" in the racing drama at the Los Angeles speedway next February.

Jimmy thinks he is about ready to settle down as a business man, having invested some of his big prize winnings in the Starr Transmission Corporation at Oakland, president. C. M. Steves is president of the new company and Harry A. Miller, the famous speed car builder, one of its chief promoters.

Captain Al. G. Waddell, a noted journalist splinter of the speedways, has been made second vice-president and placed in charge of sales.

Cliff Durant, president of the Durant Motor company of California, along with other San Francisco and Seattle capitalists, is heavily interested in the enterprise and one of the foremost backers of C. E. Starr, the inventor of the new transmission, in the introduction of his latest creation.

Smaller Cars Being Raced by Europeans

In Europe they are racing even smaller cars than 122 cubic inches. In his recent "come back" in which he won the Spanish Grand Prix averaging 85 2-10 for the 370 miles on the track near Barcelona, Dario Resta drove a 91 1/2 cubic inch Talbot racer.

Second place was secured by his companion, Albert Divo, 10 1/2 seconds behind the winner. Count Zborowski, on Aston-Martin, finished third, with Navolari, on the Italian Chiribiri, in fourth position. There were nine starters, but all the competition lay between these four, and from beginning to end Resta and Divo were never more than three lengths apart.

New License Plates Have Novel Features

SACRAMENTO, Dec. 22.—Aestheticism in color combination, is the rule with the State Motor Vehicle Department, which has on hand 1,300,000 sets of auto license plates for 1924.

The state license plates are green with white numerals. A red background for the white numerals is the mode for rubber-tired commercial vehicles.

Another innovation is the placement of "Cal. '24." to the left of the numerals, instead of between them, as in the 1923 plates.

News Classified Ads for results.

Factory Productions Slowing Down Some

November's factory production of motor cars and trucks as reported to the National Automobile Chamber of Commerce, was 325,125.

Though there was a normal slowing down in production of about 40,000 as compared with October's output, November brought production during the first eleven months of the year, up to 3,717,709 as against 2,356,117 in 1922. This is a gain of more than fifty per cent over last year and indicates that the year's total will reach 4,000,000. Last November's output was 237,301 cars and trucks.

Dealers throughout the country predict that motor car sales in the next few months will exceed last winter. Improvement in the motor truck market also is expected in the larger cities.

WATCH PEDALS

Always make sure that brake pedals do not touch the floor boards.

DEALER FEE CHANGED BY LAW

Statute Affects Methods of Handling Business in Automobile Trade

The new law reveals quite a marked change in the fee for dealer's license for 1924 and, according to Will H. Marsh, Chief of the Division of Motor Vehicles, there are a number of other changes which will affect the manner in which a dealer handles his business.

Dealers handling trailers must have a special license. The fee without reduction per quarter for the three separate licenses for dealers will be as follows:
Automobile dealer, \$5 for the first set of plates, \$3 each additional.
Motorcycle, \$5 for first plate, \$1 each additional.
Trailer, \$5 for first plate, \$1 each additional.

If a dealer neglects to renew license before March 2 he will pay a double registration fee, the penalty being equal to the fee quoted for dealer's license.

Dealers heretofore have been required to report the sale of all cars to the Division of Motor Vehicles, but occasionally cause the applicant trouble by neglecting to do so. Under the new law a dealer throws himself liable to revocation of license or refusal of renewal should he fail to report to the department each car sold during the year.

Another change requires that dealer's plates as well as 1924 individual plates be displayed on a 1924 registered car which is taken in trade. Section 81 (d).
The legal owner receives further protection under the new law. The certificate of ownership will be held by the legal owner. The certificate of registration will be delivered to the registered owner with the 1924 plates. In case of transfer certificate of ownership must be sent to the department, endorsements showing transfer being recorded on the certificate of ownership only. Failure to make transfer of ownership within thirty days of the transfer will (Continued on Page 3)

\$144 Per Family for Autos, It is Claimed

It is estimated that the volume of retail passenger automobile sales for the current calendar year, will approximate \$3,375,000,000 for the United States. This total represents a per capita expenditure of about \$32 and an average expenditure of \$144 for a family.

TWO OR MORE CARS

According to letters received by the N. A. C. C. twelve out of a thousand families own two or more automobiles.

The Light Six Studebaker

— A Satisfying Car —

Economical of Operation
Six-Cylinder Flexibility
Comfortable Riding Qualities
GENUINE SATISFACTION

A Car You'll Be Proud Of

Immediate Delivery on All Models

Light-Six two-pass. Coupe Roadster	\$1410
Light-Six five-passenger Coupe	: : \$1630
Light-Six five-passenger Sedan	: : \$1730
Special-Six five-passenger Coupe	: : \$2195
Special-Six five-passenger Sedan	: : \$2310
Big-Six five-passenger Coupe	: : \$2875
Big-Six seven-passenger Sedan	: : \$3085

All prices f. o. b. Glendale

Packer Auto Co.

Studebaker Dealers—Glendale, Eagle Rock, Burbank and Monte Vista Valley

Colorado and Brand Phone Glendale 234

Alphabetical Index of Auto Dealers Represented in Today's Auto Section

Name of Car	Dealer	Address	Page on which Ad. appears
Buick	Tanner & Hall	237 South Brand	4
Chalmers	Glendale Motor Car Co.	124 W. Colorado	2
Chevrolet	C. L. Smith	Colorado at Orange	3
Dodge	R. E. Corrigan	116 West Colorado	3
Franklin	Motor Sales Co.	406 East Colorado	3
Ford	Jesse E. Smith	115 West Colorado	2
Hupmobile	Bartlett & French	111 West Harvard	2
Maxwell	Glendale Motor Car Co.	124 West Colorado	2
Oldsmobile	C. H. Hunter	208 West Broadway	2
Overland	Smith-Sloan, Inc.	228 South Brand	4
Rollin Four	Motor Sales Co.	406 East Colorado	3
Studebaker	Packer Auto Co.	245 South Brand	1
Star	Dilley & Armstrong	115 West Harvard	1
TIRES			
Hewitt Tires	Motor Sales Co.	406 East Colorado	3
BATTERIES			
See Collective Service Station Ad.			
AUTO ACCESSORIES			
Standard Spring Bumpers	M. V. Tobin	120 S. Maryld.	4
Pesner Bros.	601 South Brand		4
AUTO INSURANCE			
Clinton L. Booth	116 West Colorado		2

The sweetest Christmas Music

to her ears would be the humming of the motor in her new Star Car

Give her a NEW STAR CAR for her Christmas. It will lighten her labors, make easy her shopping, and bring her closer to friends she has perhaps neglected.

\$490

F. O. B. Lansing, Mich.

Dilley & Armstrong

DEALERS

115 W. Harvard St. Phone Glen. 2874-J
OPEN EVENINGS & SUNDAY A. M.

The Good MAXWELL

Make Christmas a Joyful Holiday With a Maxwell Enclosed Model

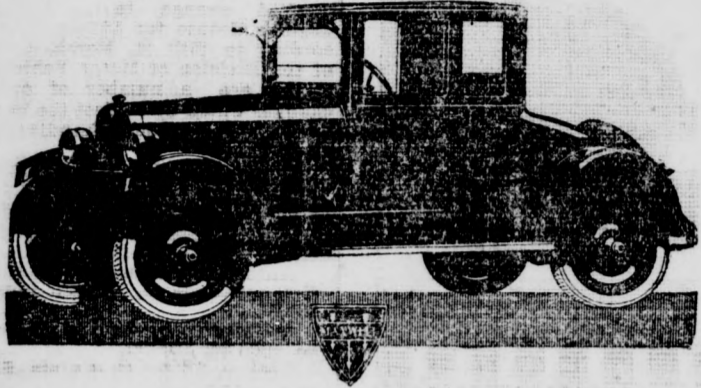
Make this Christmas the most joyous you have ever had.

Do this by selecting a good Maxwell—always an ideal present. And it's a sound and sensible investment, too.

Maxwell enclosed models, cars of genuine distinction both in appearance and performance, cost little more than an open car. Search the market as you may, you cannot match them for excess values.

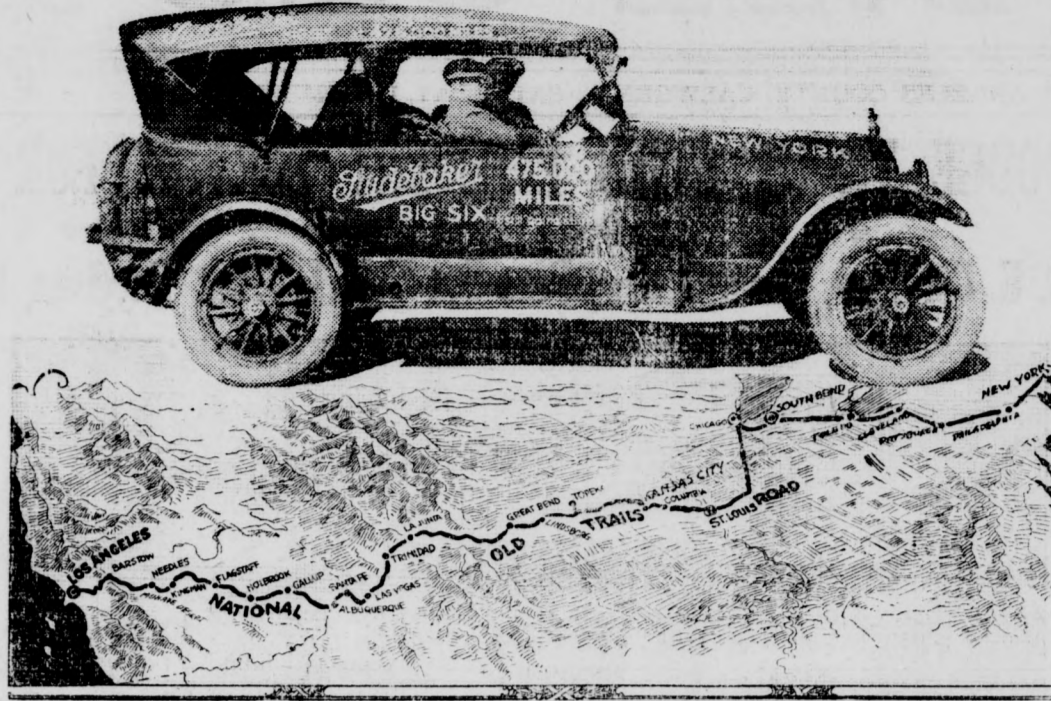
GLENDALE MOTOR CAR CO.

124 West Colorado Street. Phone Glendale 2430



VETERAN STUDEBAKER IN CROSS-COUNTRY TRIP

Ancient Car's Mileage Nears 500,000 Mark on Run to New York



Granddaddy of all Studebakers travels east on trans-continental trip to display itself at the New York Automobile Show, after which it will enter the Studebaker Hall of Fame, with other famous vehicles on exhibition there.

TOO MUCH VIBRATION

If an engine is subject to considerable vibration, there is danger of the bolts coming loose at the base.

Forty per cent of the world's railroad mileage is owned in the United States.

Mastering deserts, mountains and mud, the Studebaker Veteran, with over 475,000 miles to its credit, has been battling its way east to enter the New York automobile show in January, and the stamina and power of the old car have been a surprise to motorists all along the route, according to advices reaching Stephen C. Packer, of the Packer Auto Co., 245 South Brand boulevard, San Fernando distributors. The Mojave desert failed to delay the veteran, the roads of Arizona and New Mexico were easy in spite of obstacles, the Raton Pass was climbed mostly in high, and Kansas and Missouri mud and slush taxed the old road runner to the limit, but it pulled through in fine shape. It is now zigzagging its way through eastern cities in a triumphal march over the last leg of its journey, and after it has been displayed at the New York show, it will take its place in the Studebaker Hall of Fame, where the carriages of Lincoln and Grant and other famous vehicles are kept for the benefit of present and future generations.

Kansas Opens School For Reckless Drivers

(Continued from page 1) ceived the idea, is very well satisfied with results.

Produce Results
Traffic officers declare that the effect on motorists is noticeable and that violations have decreased considerably since the opening of the Fall term of school. Judge Roberts also has inaugurated another idea which is meeting with hearty response by conscientious citizens who are sincere in looking after the safety of children.

An appeal was made to citizens who could devote a part of their time each day to guiding traffic in school zones and other parts of the city. Special police commissions have been issued to the numerous applicants who answered the appeal. Full authority to make arrests is given the citizens who apply for traffic duty. Judge Roberts has received the approval of M. E. Pearson, superintendent of schools, to have a 10-minute session on traffic instruction one day each week in the Kansas City High School. It is believed that in time, by so doing, the auxiliary traffic force may be augmented.

MUST HAVE OPENING

When making an improvised covering for the gas tank filler pipe to take the place of a lost cap be sure to allow some opening for air, otherwise the vacuum feed system will not operate.

CARS BOUGHT AS CHRISTMAS GIFTS

Holiday Business Shows Big Increase As Buyers Choose Presents

"The holiday season usually brings an increase in business to the automobile dealers. Many buyers wait until Christmas to purchase their cars, and give them to the wife or family as a Christmas gift. Many automobiles have been delivered this year in Glendale as Christmas gifts and we, as Maxwell-Chalmers dealers, feel that we have been very fortunate in getting our share of this business," said Lyman P. Clark, of the Glendale Motor Car Company, 124 West Colorado street, Maxwell and Chalmers dealers.

It has been an unusually prosperous year in Glendale, and all of Southern California. Many bonuses are to be paid the employees and business houses are going to declare dividends larger than they have ever paid before. All of this will stimulate the automobile market, and motor car dealers throughout Southern California anticipate the largest automobile business in 1924 that they have ever had.

"The Maxwell closed car makes an ideal Christmas gift," said Lyman P. Clark. "The cost of the car is in the reach of everybody; it has the lines and appearance of the higher priced automobiles; it has the body room, easy riding and comfort found only in higher priced cars, and appeals particularly to the family."

COUPE SEDAN IS EASILY HANDLED

Women Drivers Turn to New Willys-Knight Model In Thousands

"Since its first exhibition at the 1923 shows the Willys-Knight coupe sedan has found favor with women drivers, thousands of whom are now found at its wheel," says George T. Smith, of Smith-Sloan, Inc., 228 South Brand boulevard, Willys-Overland agents.

"It is a serviceable car for a woman. The beautiful mouse colored upholstery blends with and protects the motoring costume or the costliest gown. One may dress for the opera and drive her car with the positive feeling that weather can not enter, that the coupe-sedan may be handled without causing weariness and that the faithful Knight sleeve valve motor will always function. "The Willys-Knight is the easiest of all cars to steer. The clutch only requires sixteen pounds foot pressure, fifty pounds is usually needed in other cars, yet exerts an actual clutch pressure of 300 pounds."

News Classified Ads for results.



Tudor SEDAN \$590 F.O.B. Detroit FULLY EQUIPPED

Give One For Christmas

The Tudor Sedan is a gift every member of the family will share. It adds to daily happiness. It will extend the joyous spirit of Christmas to every day of the year.

broad cowl, sun visor, and large windows make it stylish in appearance. Yet it is sold at the lowest price ever asked for a Sedan—only \$590 f. o. b. Detroit.

This new Ford type is of an exceptionally pleasing design. Wide doors opening forward, folding right front seat, and a roomy interior make it a convenient car to use; its high radiator,

The rich, permanent luster of its finish, the quiet good taste of its upholstery, and the ornamental treatment of its full-nicked hardware, all help to make it a car you are proud to drive.

This car can be obtained through the Ford Weekly Purchase Plan.

Authorized Ford Dealers



CARS · TRUCKS · TRACTORS

For Profitable Results Use News Want Ads

ATTENTION!

Motor Car Owners

The following responsible and established battery houses of Glendale, after mature consideration, have decided to charge a small fee for testing, watering and inspecting automobile batteries, effective Jan. 1st, 1924.

We believe that car owners, realizing the necessity and importance of regular, expert battery inspection, are not desirous of imposing on battery stations the cost of a service that is rendered for the car owner's benefit. A nominal charge will enable us to maintain a higher standard of service, carefully rendered by competent men.

Effective Jan. 1st, 1924, we will charge the following prices for such service:

- Calling For or Delivering Battery, Minimum... 50c
- Test and Water Battery 15c
- Clean and Grease Terminals 25c

Parker & Black

Exide Batteries
113 W. Harvard, half block west of Brand

Gateway Automotive Co.

Gill Batteries
327 W. Los Feliz Road

Sherman-Bond Auto Electric Co.

Gould Batteries
426 S. Central Ave. Phone 1893-J

Psenner Bros.

U.S.L.—Philadelphia Batteries
601 S. Brand. Glen. 452

Blackburn Battery and Electric Station

Exide Batteries
1023 E. Broadway

K. B. K. Service Station

Exide Batteries
Cor. Adams and E. Broadway

Westinghouse Battery Station

Westinghouse Batteries
306 S. Glendale Ave. Phone Glen. 741-M

Broadway Super Service

Cooper Batteries
814 East Broadway

Glendale Battery and Ignition Works

Vesta Batteries
At Cor. Broadway and Louise St.

Gardner Auto Electric

Prest-o-Lite Battery
166 W. Harvard

Bob's Battery and Ignition Works

Bob's Special Battery
110 N. Louise St.

The New Oldsmobile Six

Now on display with three different models

Touring \$750.00 — Plus \$148

Freight and War Tax

Immediate delivery on most models

Open Evenings and Sunday 10 Until 1 P. M.

C. H. HUNTER

Glen. 2373.

208-210 W. Broadway

BARTLETT & FRENCH Hupmobile

SALES AND SERVICE

111 W. HARVARD ST.

First Class Repair Shop for All Makes of Automobiles
Phone Glen. 1667.

Hewitt Tires

We carry a full line of Hewitt tires and tubes at standard prices.

Hewitt tires have been adopted by a number of the large stage companies after exhaustive tests.

As an introductory offer we will furnish a free tube with each tire during the next thirty days.

We also have the Hewitt balloon size.

Motor Sales Co.

406 E. Colorado

DO YOU LIKE TO PLAY POOL, BILLIARDS OR SNOOKER?



The Glendale Snooker Club was organized to give people of Glendale an opportunity for clean amusements.

Come in and ask about our memberships, which are inexpensive and open to anyone over 18 years of age.

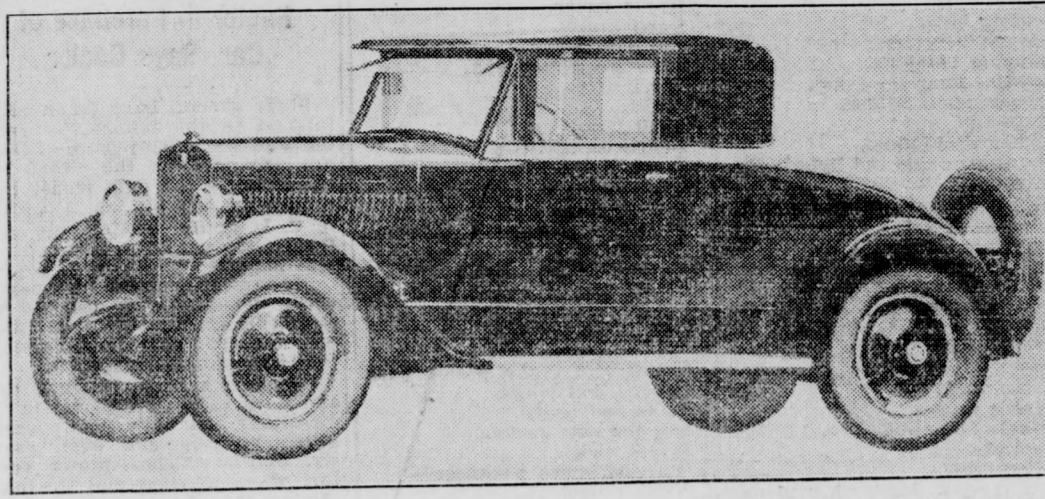
GLENDALE SNOOKER CLUB

H. P. Durgin, Manager

106-A So. Glendale Ave. Glendale, California

NEW ROLLIN CAR STARTLES AUTOMOTIVE WORLD

European Type Motor and 4-Wheel Brakes, White's Latest Product



Three-passenger Rollin Sport Coupe, the product of the engineering genius of Rollin White, which is taking the motoring world by storm. The Motor Sales Company, 406 East Colorado street, will distribute the car in this territory.

GROWING DEMAND FOR BUICK FOUR

Performance And Ability of 1924 Models Prove Lure to Wise Buyers

The growing demand for Buick Fours, in the face of the almost universal trend toward six cylinder cars, is taken as a striking endorsement of the merits of the 1924 model Buicks, with their improved engine, four wheel brakes and other features that have been incorporated in the new line.

"The wise motorist," declared Ray L. Galvin, sales manager of Tanner & Hall, 237 South Brand boulevard, Buick distributors, "realizes that a car should not be bought principally on account of the number of cylinders under its hood. While it is true that a four cylinder car does not possess all the features to be found in six, the Buick four closely approximates six-cylinder performance.

"The Buick four has been built on the principles that Buick has followed so successfully for more than twenty years, and purchasers of Buick fours know, very soon after they buy their cars, that they have received full value for their money and that their investment has been a sound one in every way.

"The Buick four valve-in-head motor has power and speed beyond all usual requirements, and its performance stands without a rival in the four cylinder motor car field today. And they are the only Fours in America fitted with four-wheel brakes."

CERTIFICATE OF TITLE

Under the new law, each owner of a motor vehicle in Pennsylvania must hereafter have a certificate of title of his or her car, similar to a real estate title. The fee for registry is \$2.

Word has just been received from the executive offices of the Rollin Motors Company at Cleveland, Ohio, by the local agent, E. S. Beggs, head of Motor Sales Co., 406 East Colorado street, giving a full description of the new car that has been eagerly awaited by the automotive world.

The car has been designed by Rollin White, for many years a leading figure in engineering circles in the automotive world, and his latest product is said to mark new standards in the manufacture of automobiles.

Factory officials declare that the initial dealer demand for the Rollin car, which comes in three models, threatens to tax the factory capacity to the limit. The three styles are the five passenger touring phaeton, the three passenger sport coupe, and the five passenger sedan, all of them carrying the new European type, small displacement high speed motor, four wheel brakes and balloon tires.

New Style Motor

In the motor of the car White has developed many new features. The motor is light in weight and embodies the same fine character of engineering as is to be found in the highest priced American eights and twelves, according to the claims made for it, besides being extremely simple and compact.

The new type of force feed lubrication to all rotating motor bearings is a new departure on a car of this type, having been confined almost exclusively in the past to cars of much higher price. The new manifold and carburetor development promise to give exceptional results in the way of gasoline economy, predictions being freely made that the car will deliver from twenty-five to thirty miles per gallon.

Another important feature is that the Rollin is equipped with the internal type of four wheel brakes, and the use of balloon tires is also a surprise in view of the fact that the Rollin is the first medium priced car to adopt these tires as a part of its standard equipment.

Mr. Beggs has been notified that the Rollin demonstrator is being shipped to him for use in this territory, and from the many enquiries that have been made since it became known that he was to handle the Rollin here, he expects to secure an important volume of business in the Glendale district.

AGENT RECEIVES MORE OLDS CARS

New Six Shown in Various Models as Output From Factory Increases

For the first time since the new Oldsmobile Six was announced, says C. H. Hunter, local Oldsmobile dealer, 208 West Broadway, he is now able to show more than one model of this car. Demand for Olds cars, according to Mr. Hunter, has been so heavy this fall that considerable difficulty has been experienced in keeping cars for showing.

A carload of the new Olds Six was unloaded by Mr. Hunter yesterday and another load will arrive within the next few days.

"Most of these cars," said Mr. Hunter, "are sold for Christmas delivery but will remain on display in our show-rooms until time to deliver at Christmas."

Mr. Hunter says the demand for the new Six has been greater in Glendale than was expected, but with the factory turning out 600 cars a day, he is confident now that he will be able to make fairly good delivery in the future.

DRIVE CAREFULLY

Never pass a street car when it is stopping, or, if the law permits, proceed very slowly past it at the legal distance.

Mahogany trees reach their full height when 200 years old.

Oriental Finds Pay Streak, Digs Fortune

GRASS VALLEY, Dec. 22.—The name of a humble Chinese, known only as Tai has been incorporated in a new mining company in the You Bet district.

The Chinese for seven years strove to secure a lease on a strip of gravel land, having discovered a rich pay streak. It was denied him until after the death of the owner of the strip, Jerry Goodwin, in 1915.

The lease in his possession, Tai worked vigorously and it is reported secured gold totaling \$432,000 from a strip of gravel 200 feet long, eighty feet wide and six feet in height. The fortunate Oriental has no connection with the company.

News Classified Ads for results.

Giant Explosion to Remove Mount Top

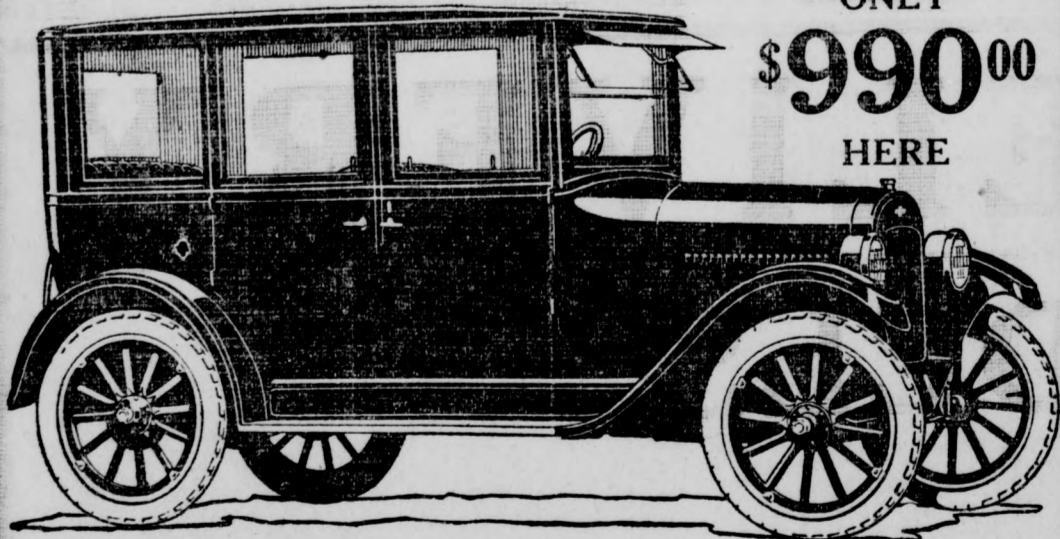
TRUCKEE, Dec. 22.—Tunneling beneath the mountain west of Donner lake, which bars the construction of the Truckee river highway, has been completed and within a few days, workers will blow off the top of the mountain with thirty tons of dynamite and black powder.

George R. Poulos, superintendent of construction, said that he expects to achieve this result with one blast.

Motorists from Sacramento, Placerville, Reno and other adjacent cities are preparing to make the journey and witness the pyrotechnics.

Labor of 300 men working four to four and a half days is required to coal the S. S. Olympic.

The Best Gift of All FOR THE FAMILY A CHEVROLET CAR



ONLY \$990⁰⁰ HERE

FISHER BODY CORD TIRES
ALEMITE SYSTEM
Gasoline Tank on Rear of Car

Nothing Compares With Chevrolet

C. L. SMITH
DEALER

OPEN EVENINGS.

COLORADO AT ORANGE

PHONE GLEN. 2443

BIG DEMAND FOR STAR'S NEW LINE

Choice of Open or Closed Models at Low Prices Durant Policy

"Since the new models of the Star cars were introduced a few weeks ago, we have been turning out a record number of cars," says W. W. Prindle, sales manager for Dille & Armstrong, 115 West Harvard street, Star distributors. "The instant popularity that greeted these models has taxed our capacity to the limit, and we have been hard put to it to meet all the demands that have been made on us.

"These new Star car special models offer to the customer something never available before under a thousand dollars. The choice of either an open or closed car in colors at these prices, is evidence of W. C. Durant's policy of giving the purchaser more for his money than is possible in any motor car other than a Durant product. It is one reason why the new Star car is the outstanding value in the automobile market."

Motor Vehicle Laws Change Dealer's Fee

(Continued from page 1) result in a transfer fee of \$2 being collected instead of \$1.

Parties Must Sign
In case of change in legal ownership only, the certificate of ownership must be signed by the contracting parties and sent to the department with a \$1 transfer fee, when a new certificate of ownership will be issued to the new legal owner.

The penalty on transfers will apply to dealer's license as well as individual license. Any change in the ownership of dealer's plates caused by a member withdrawing must be recorded with the Division of Motor Vehicles within thirty days from the date of transfer in order to avoid a penalty equal to the transfer fee being imposed.

To Our Friends and Patrons—

Best Wishes for a Merry Christmas and a Happy New Year

DODGE BROTHERS MOTOR CARS

— and —

GRAHAM BROS. TRUCKS

R. E. CORRIGAN

DEALER

116 West Colorado

Glendale 1465.

Glendale, Calif.

For Profitable Results Use News Want Ads

Don't Buy---

That Car for a Couple of Weeks and Look at the

Rollin Four

We have a shipment on the cars between here and the factory that will arrive before long.

It Will Pay You to Wait

You get Balloon tires, Disc wheels and Four-wheel internal brakes as regular equipment.

Come in and get the specifications and compare with any car in its class. We have a lot of the higher priced cars beat for engineering features.

Glendale Prices:

De Luxe Touring	\$1175
Coupe Roadster (3-pass.)	\$1375
Sedan	\$1475

Motor Sales Co.

406 E. Colorado

Franklin

Rollin

Give Auto Accessories for Christmas

Auto accessories from Psenner Bros. are practical gifts—you know the recipient of—well, just say a Motometer, would be very well pleased. Other items that would make ideal gifts are Windshield Wipers, Spot Lighters—well drop in and Lighters, well drop in and have a look at our accessory Department.

Psenner Bros. Auto Electric Co.

601 S. Brand Blvd.
Phone Glendale 452

FORDSON PROVES ITS VERSATILITY

Tractor Furnishes Power to Saw Wood; Tom Smith Claims Title

Another proof of the versatility of the Fordson tractor, is shown at the Jesse E. Smith Co.'s plant, at 115 West Colorado street, this week, where one of these tractors has been hooked up to a Little Buddy saw by a belt and pulley arrangement, and is sawing wood into various sizes. The power is furnished by the motor of the tractor, and the arrangement is an ideal one for the man who wants to saw up his supply of winter fuel.

Tom B. Smith, who is sometimes accused of sawing wood in the watches of the night, has been appointed mahout of the saw, and he claims the wood saving belt for the San Fernando valley, at catchweights, no holds barred.

The rush of visitors to the showroom during the last week, which has been Ford Display Week all over the country, has boosted the sales to a point where the December totals will present a striking comparison with the figures for any other month during the past year, according to officials of the company, and an added attraction to the display of the newest models of Ford cars has been Santa Claus, who has distributed many banks to the children who called at the office, each one with the start of a Ford Weekly Purchase Plan saving account in it.

The children who left their names when receiving their banks will have their numbers drawn from a hat or similar receptacle on Monday night, when the lucky person will receive a gift of a miniature trailer and tractor.

HEALING WITH WATER

Young Captain Dalgas learned that running water was the death of heather which in the early part of the nineteenth century overran the lands of Denmark and threatened to make it a desert waste. He accordingly put the people to digging ditches and canals. Peas, beans and rye soon began to grow and cows and pigs followed. The waste was reclaimed in good time and Denmark became a land of butter, eggs and bacon.

Give Auto Xmas Gift List

If you are in doubt as to what to give your motoring friends for Christmas or feel as though there is but a small number of items from which to choose in the accessory line, look over this list of suggestions:

- Anti-rattlers
- Sleeping bags
- Water bags
- Folding beds
- Storage batteries
- Camping blankets
- Gasoline lamp for camp
- License plate holder
- Spotlights
- Pocket flashlights
- Box of head and tail light bulbs
- Bumpers
- Oil, gas and water canteen outfits
- Lubricating oil
- Luggage carriers
- Tire carriers
- Tires and tubes
- Spark plug case
- Tire locks
- Tire chains
- Clocks
- Motor coats
- Driving gloves
- Trouble lamp and cord
- Coveralls
- Seat covers
- Auto creeper, for work in garage
- Side and rear curtains
- Muffler cutouts
- First aid kits
- Gasoline and oil gauges
- Tire gauge
- Wind deflectors
- Windshield wipers
- Tonneau windshields
- Goggles
- Grade meter
- Camp grate
- Gasoline stove
- Pressure grease gun
- Car heater
- Jacks
- Food jars
- Luncheon outfits
- Dome lights
- Cigar lighter
- Ash receiver
- Flower vases for enclosed cars
- Tow line
- Motometer and lock
- Robe locks
- Set of road maps
- Rear view mirrors
- Folding pails
- Clutch and brake pedal pads
- Pistons and rings
- Tents and beds
- Sun and rain visors
- Trunk racks
- Running board restaurants
- Shock absorbers
- Socket wrench sets
- Stop signals
- Folding tables
- Camp stools or chairs
- Tool kits
- Demountable and disc wheels
- Steering wheels

WOMEN INSISTING ON CLOSED CARS

Comfort in Motoring Big Factor in Purchase of Car, Says Dealer

Since women have taken more interest in the family car problem and since many more of them are driving cars, the closed car seems to be the only model that is popular with women, according to C. L. Smith, of Colorado and Orange streets, Chevrolet distributors here.

Mr. Smith declares that nearly every woman who comes into his salesroom to purchase a car with her husband, or alone, always wants the closed models.

"Women hate to sit in a car, and have their hair blown in all directions and have their clothes soiled by rain and dust," said Mr. Smith. "They prefer comfort when driving, and the only comfort they get is with the closed car."

"Driving in a closed car means that the women do not have to bundle up, and when going to a party, they need not wear hats and heavy coats and need have no fear of getting their party dresses soiled."

"Is any wonder, then, that closed cars are being demanded by women, and that is one reason why we have had such a heavy demand for closed Chevrolet motor cars?"

Mr. Smith also reports a growing demand for the new sport models, in blue, that are so distinctive in their appearance.

Franklin Motor Cars

are getting more popular every day with the conservative buyer who demands long life, comfort and economy in his motor car.

So far this month we have sold five new Franklins to people who know how to spend their money for motor cars.

If you can't afford a new one we can supply you with a guaranteed used one at a very reasonable figure.

Motor Sales Co.

406 E. Colorado
Franklin Rollin

TAKES ISSUE IN BRAKE ARGUMENT

R. E. Corrigan Favors Merits Of Two Wheel System In Discussion

Answering the argument which, he says, is intended to create a prejudice against the two-wheel-brake automobile, and the inference that insurance rates are cheaper on the four-wheel brake cars than on the former, R. E. Corrigan, local Dodge motor car dealer, 115 West Colorado street, quotes the following article from Insurance World of recent date:

"At a joint meeting of the Actuarial and Forms committee of the National Automobile Underwriters' conference and the automobile committee of the National Bureau of Casualty and Surety Underwriters, held recently in New York, it was decided that four-wheel brakes upon automobiles do not increase their safety, but in fact rather add to the danger of accidents, and that, therefore, there will be no reduction of rates because of their use. A leading underwriter, discussing the subject, is quoted as saying that the opinion among underwriters has decidedly changed, owing, among other reasons, to the fact that a large manufacturer of automobiles who placed four-wheel brakes upon his machines during the current year, has decided to eliminate them on his 1924 cars, because he found by actual experience that a four-wheel brake was not as safe as a two-wheel."

"Many accidents have occurred in both Chicago and New York as a result of two-wheel-brake cars not being able to stop promptly when behind four-wheel-brake cars, with the result that the two-wheel-brake cars have jammed the cars ahead of them. More serious still is a recent report from Scranton, Pa., underwriters say, where the danger of front wheel locking pointed out by opponents of four-wheel brakes forcibly was illustrated. In this case the front wheels locked and the car turned turtle, killing three people and severely injuring several others. Front wheel locking and skidding, which experts say is much more serious than rear wheel skids, are but two of a goodly number of reasons, some underwriters maintain, why four-wheel brakes in their present stage of development and use are a most certainly not entitled to a rate credit of any sort.

It hardly could be said in fairness, however, that the members of the two committees, with whom the decision in this matter rested, went to the conference

STAGE SUPERSTITIONS

Cotton, be it only a cotton thread, hanging to a garment, is considered good luck on the stage. A seasoned actor or actress will literally fall upon the piece of cotton and keep it, as it is supposed to be the happy harbinger of a new and prosperous contract. Two very old stage superstitions are never to quote "Macbeth" and never to wear real flowers on the stage while acting a part.

BUSINESS MEN BEST

William Range, a jury clerk in Michigan, says that the ordinary business man makes the best jurymen and that he is a better jurymen when he is not too highly educated because he is used to dealing with matters in a matter of fact way. But, on the other hand, it is just this type of man who dislikes most to serve and who will try to find some excuse to get off, he says. Judges usually are quite willing to let off the new bridegroom.

INVESTORS NOTICE

Have fine subdivision acreage ready to subdivide and need few investors to help finance. Will make 100% to 500% on amount invested in four years or less. Sums of \$1,000 up accepted. Only Glendale residents considered. Box 241, Glendale News.

Registrations Show Gain In November

November registrations of motor cars and trucks in California, show a gain of 4,043, or twenty-three per cent as compared with last year, which was 1922's biggest month.

As compared with October's big showing, they fell off only \$89 sales or less than four per cent.

Registrations of passenger cars and trucks last month reached a total of 21,410, according to Motor Registration News, a statistical paper published in Oakland.

From these comparisons, one can readily ascertain this state is still in a flourishing era and gives promise of completing 1923 with volume car and truck sales approximating the quarter million mark.

It is the conservative belief of Motor Registration News publishers, such a total will materially eclipse the record produced in the current calendar period by any other state in the Union. Since it is difficult to secure registration data in other sections as completely as it can be procured in California, a comprehensive analysis by states is almost out of the question.

Mail boxes on the outside of interurban cars now bring a better service to outlying communities.

Inmates of Home for Aged Cupid's Victims

ALTOONA, Pa., Dec. 22.—The little god of the bow and arrow on a recent raid here invaded the confines of the Morrison's Cove Home for the Aged and attacked two of the inmates. One is aged 73, the other 70.

J. C. McClellan and Mrs. Catherine Bloom slipped quietly from the institution and visited the most popular nearby Gretna Green, Cumberland, Md.

They have started a home of their own.

Vatican Store Room Yields Rare Statue

ROME, Dec. 22.—A head in Parian marble, believed to have formed part of the decorations of the Parthenon at Athens, and declared to be the only relic of the famous temple in Italy, has been discovered among a heap of lumber in one of the Vatican store-rooms.

The find was made by Professor Amelung, who recently obtained permission to explore the old Vatican store-rooms for the first time for centuries.

In the daytime, claim some astronomers.

Before It is Too Late Equip Your Car With

Standard SPRING BUMPERS

"STANDARD SAFETY"

For large cars..... \$20.00
For smaller cars..... 17.00
For Ford, Chevrolet,
Overland, Star..... 15.00

TRAFFIC HAZARDS ARE DAILY IN- CREASING

A bumperless car is like a frail boat in an ice jam. With Standard Bumpers you can drive anywhere with safety and confidence—get into traffic jams—stop suddenly—park your car safely. Standard Spring Bumpers protect both your car and the other fellow's against damaging smashes.

Standard Spring Bumpers

SALES AND SERVICE
M. V. TOBIN
Phone Glen. 2817-W
120 S. Maryland

The KNIGHT Before Christmas



Our Sincere Wish to Glendale and Vicinity
A Merry Merry Christmas
and
A Good KNIGHT to All!

SMITH - SLOAN, Inc.

Phone Glen. 1340 228 S. Brand Blvd. Glendale
Don't fail to see our Christmas Window Display

IMMEDIATE DELIVERY

ON MOST MODELS

— Prices Delivered in Glendale —

FOURS

5 Pas. Sedan, \$1735 — 4 Pas. Coupe, \$1630 — 5 Pas. Touring, \$1160 — 2 Pas. Roadster, \$1125 —

SIXES


3 Pas. Roadster, \$1520—5 Pas. Touring, \$1545—7 Pas. Touring, \$1835—5 Pas. Sedan, \$2400—7 Pas. Sedan, \$2625—4 Pas. Coupe, \$2295

5 Pas. Brougham, \$2570 — 3 Pas. Sport Roadster, \$1945 — 5 Pas. Sport Touring, \$2000

Phone for Demonstration

TANNER & HALL

Phone Glen. 50 237 So. Brand




Magazine and Feature Page

Daily News Letter

General News and Gossip from Staff Writers at Home and Abroad.

TODAY—England's Newspaper War.

By DAVID M. CHURCH
For International News Service.
LONDON, Dec. 22.—England is facing a good old-fashioned newspaper war.

PRINCESSES TO SEEK HUSBANDS! Daughters Of Spain's King 'Growing Up'



Princess Beatriz (left) and Princess Marie of Spain

MADRID, Dec. 22.—It won't be long before Spain will have to worry about husbands for Princess Beatriz and Princess Marie, daughters of King Alfonso and Queen Victoria.

Timely Views on World Topics

"EUROPE MUST PRESENT PLAN FOR U. S. ASSISTANCE," SAYS JENKS
Our government has stated repeatedly through various channels that it is not only willing, but eager, to lend every assistance to Europe just as soon as any practicable plan is presented.

EVERYTHING that you need for the Holiday Season including COMALT is at The Sun Drug Co. "Glendale's Progressive Drug Store"

Uncle Wiggily Bedtime Stories - BY HOWARD R. GARIS

UNCLE WIGGILY AND THE APPLE PIE
Uncle Butter, the gentleman goat, twiddled his chin whiskers up and down and then looked at Aunt Lettie.

BEWARE OF BOARDERS

One student of oddities in legal actions has come to the conclusion that there are many women who make a comfortable living and lay aside a competence, by bringing breach of promise actions.

POEMS That LIVE

THE SHEPHERDNESSE
I must not think of thee; and, tired yet strong, I shun the love that lurks in all delight.

NO Commission Charged

We are selling real estate in a sensible way. We want to list your property and will advertise daily in at least three papers.

NO Commission C. E. SHAW

Bonded Real Estate Broker
808 East Colorado Street
Glendale, Phone Glen. 100-R

PROFESSIONAL CARDS

DR. JOSEPH ALBERT KLEISER, Dentist
108 1/2 S. Brand Boulevard
Telephone 1335
Hours, 9 to 6; Evenings by Special Appointments Only

P. S. Traxler, M. D. PHYSICIAN AND SURGEON
Diseases of Genito Urinary System
140-A N. Brand, Office Ph. 2801

Dahlman & Son
620 N. Geneva St.
Glen. 1804-J
Builders of Fine Homes

GLLENDALE AUTO AND MACHINE CO.
RALPH M. REED, Prop.
Satisfactory Repair Work of All Kinds.

PLUMBING
Repairs a Specialty
Alaska Bldg. Co., 410 E. Colo.
Glen. 3197

PLUMBING
Repairs a Specialty
Alaska Bldg. Co., 410 E. Colo.
Glen. 3197

R. M. Hermann
Contractor-BUILDER
Estimates FURNISHED
340 Ivy St., Glendale, Cal.
1106-W

Gateway Electric Garage
1416 S. San Fernando Road, near Los Feliz
Ignition Experts
Batteries called for and delivered
Open Evenings
Phone Glendale 1570-W.

GOLDFISH
A GIFT THAT'S DIFFERENT
We carry globes, water moss, fish food and general supplies.
Open to visitors, daily except Sunday.
464 Oak St., Glendale, Cal.

NEWS WANT ADS BEST RESULTS
E. C. WILLIAMSON — Building Contractor
STORE FRONTS AND PICTURES
STAIR AND CABINET WORK
REMODELING and REPAIRING

BETTER DENTISTRY—For Much Less
No Hurt—No Nervous Strain
DR. BACHMAN, 831 E. Windsor Road
Night or Sunday, Phone for Appointment, Glen. 1933-W

ROOFING
New Composition Roofs Laid, Old Roofs Rebuilt or Repaired, Material and Labor Fully Guaranteed. Estimates Cheerfully Given.
BENTLEY LUMBER COMPANY
GLENDAL 49 460 W. LOS FELIZ ROAD



BUTTERFIELD CESSPOOL
And Sewer Contractor
Immediate Attention Given to Filled-up Cesspools
F. C. and W. J. BUTTERFIELD
1325 N. Central
Glendale 1505-J

CESSPOOLS
E. H. KOBER
110 W. Blvd., Phone Gl. 889

Woman's Page

Diet and Health

By Lulu Hunt Peters, M.D.
Author of "Diet and Health, with Key to the Calories"

ANSWERS TO CORRESPONDENTS

Mrs. W.:—We have recently had many articles on the diet for children. Each child should have included in his diet at least three cups of milk; one cup of vegetables, part raw; one cup of fruit, part fresh if possible; plenty of whole grain cereals, including bread; butter, some nuts, eggs and especially the egg yolks.

If a child is underweight he must eat more than the normal child does, and that means some eating. If he is not getting some meat, he should have a liberal helping of nuts or cottage cheese every day. You should not try to force him in any way mentally. The fact that he is undernourished might account for his slight under mental development.

If you do not send him to school you must teach him yourself, and have regular hours for his lessons. It might be possible that if he went to school, the association of the other children might help him. Of course, I cannot say this positively. It does not follow at all that because children are not developed mentally for their age, they will not forge ahead and possibly be higher than the average child later.

It seems to me your problem now is to get your child's physical condition up to par and his mental condition will take care of itself. We recently had a series of articles on the malnourished child. Did you see them?

Mrs. W. W. No. 2:—Your husband and you are suffering from pediculosis vesimentorum. To use shorter and simpler and better known words, body lice. These little, flat, almost transparent looking crawlers which you describe, are no other than those little pests which are favored by dirt and uncleanness, but which will show no discrimination and breed on the most cleanly if they get the chance. They were one of the pests of the boys in the trenches, and many of us who did overseas work, both during and after the war, made their acquaintance.

There are three types of pediculosis—the pediculus capitis, which attacks the hair; the pediculus vesimentorum, which favors the body and the clothing; and the pediculus pubis, which attacks the skin and hair of the pubis.

One treatment for the head lice is to soak the hair with an equal amount of kerosene and sweet oil. This may be put on at night and then washed with a strong soap and water in the morning. This had better be repeated two or three times to destroy the eggs. The eggs will have to have special treatment to get them off the hair. Soaking the hair in weak vinegar will soften the glue-like substance with which they are fastened. Then use a very fine smooth comb.

For the public lice, it is best to shave the hair and apply the same treatment as for the head lice. A prescription made of equal parts of compound spirits of ether and zylol, applied with a bit of absorbent cotton, will kill the lice and the nits instantaneously.

Remember that both kerosene and ether are inflammable.

For the body lice attention has to be paid to the body and the clothing also. Woolen clothing should be baked in a hot oven and the under clothes and bed sheets should be boiled thoroughly. If this cannot be done, or if new clothes cannot be obtained, powdered sulphur may be used in all the seams of the clothing.

For the body, take a hot bath and rub all over with a five per cent ointment of carbolic acid.

Mrs. H. L.:—The breast nipples can be developed before the baby comes by gently pulling on them several times once or twice a day. If the nipples are undeveloped, better begin four or five months or longer before the baby comes. There is muscular tissue around and in the nipple, and this tissue will develop.

Mr. B.:—We have articles on balanced diet, acidosis, and constipation you may have by following the column rules.

'BARGAIN DAY' IN LOVE SUIT

Woman Becomes Peeved, Asks For New Trial



Mrs. Dorrit Stevens Woodhouse

WESTFIELD, Mass., Dec. 22.—Mrs. Dorrit Stevens Woodhouse is preparing to lay her bleeding heart upon the table of a courtroom once more. Better that she suffer the loss of it entirely than that it be allowed to suffer the humiliation of being thrown on the bargain counter of life, she says.

Her heart beat normally and happily in her breast until the love of her husband grew cold. The news that he had gone to Reno to sue for divorce pierced it to the core and left it bleeding and aching.

Then she found out the reason of his coldness, she says. It was the influence Woodhouse's parents, Lorenzo E. Woodhouse of Burlington, Vt., and his wife.

She weighed her heart in the scales and decided that the wound could be healed for \$1,000,000 and sued her parents-in-law for that amount for alienation of Woodhouse's love.

Then the jury got in its deadly wound. Wound No. 2 came when the twelve men and true decided her heart was worth only \$455,000. The judge took another stab at it by cutting the amount down to \$125,000, or \$340,000 off.

Mrs. Woodhouse wrapped up her heart and took it home. But she isn't resigned to the bargain price. She has just instructed her lawyers to seek a retrial.

Gelatin from Delft Netherlands, said to be some of the finest made, is mostly derived from stewed horses.

News Classified Ads for results.

CHURCH SERMONS

(Continued from page 8)
service 7 o'clock; relief society on Tuesday, 2 o'clock. Viola D. McIntyre, president; Beehive class Tuesday at 3:30 o'clock, all young women from 14 to 21 welcome. Hyacinth Lambert is bee-keeper.

Central Avenue M. E. Church at South Central and Palmer avenues. Rev. Leo C. Kline, pastor; Dr. Joseph M. Carpenter, musical director; Mrs. Casper Tuttle, pianist; D. C. Bear, superintendent; Mrs. Elsie Moore, chorister; L. Baker, president of Epworth League; Sunday school 9:30 o'clock; morning worship 11, sermon by Rev. Kline, Epworth League 6:30 o'clock; evening service 7:30 o'clock, sermon by Rev. Kline.

Occult Scientists Meet at 113 South Orange street, Rev. and Mrs. Arthur Moore in charge. Sunday night service 8 o'clock. Mrs. Mabel Moore will give a Christmas talk on "The Giver and His Gift," followed by psychometry readings.

Gelatin from Delft Netherlands, said to be some of the finest made, is mostly derived from stewed horses.

BEAUTY CHATS

EDNA KENT FORBES

WHEN YOU'VE A COLD

If you have a bad cold you probably won't want to look beautiful and I doubt whether you would succeed even if you tried. However, here are some suggestions that will make you hate less to look at yourself in a mirror. Of course I am assuming that at the first sign of a cold you have taken a good laxative, some quinine or other cold-destroying medicine, and at the first opportunity have gone to bed with a scorching hot drink and a few extra blankets. Today's suggestions are for external remedies. Your lips will probably be forlorn and dry and chapped. Get a lipstick of white cream and keep them well rubbed with this during the day. At night bathe them with warm boracic water. Your complexion will look dry and gray, a lot of the bad color is due to internal causes which will be cured by the laxative. To overcome the dryness rub the skin with heavy cold cream, wash off with warm water and use no soap at all.

If the eyes are at all affected, bathe them with warm, weak boracic lotion or bathe them with weak tea. If it's boracic lotion, use an eye-cup and open and dry up the cold. There are various things to inhale which any druggist will sell. Most of them contain menthol and are wonderfully helpful in clearing the nasal passages.

If the skin looks badly in spite of all your efforts, use vanishing cream before powdering. Rub a little olive oil in the scalp, for the hair looks dry and dusty with a cold.

T. E. D.—Exercise, or massage, since this is also another form of exercise, will always build up the muscular tissue. If there is too much fat, exercise reduces it, while it gives firmness to the muscles. If the muscular tissue is flabby there will be a development from the exercise, so exercise will either reduce or increase as the need may be, for perfect symmetry and health.

R. X. S.—The only way to cure pimples is to trace them to their cause. The trouble may often be found in the digestive tract, poor elimination, or from a run-down system. Eating too much candy, especially between meals, will often cause pimples. In such cases a few days of dieting and drinking of water will be all that is needed.

Prolonged attacks of pimples often come from one pimple infecting another. In such cases, local treatment is needed. Flour of sulphur or an ointment in which there is sulphur will be helpful.

All inquiries addressed to Miss Forbes, in care of the "Beauty Chats" department will be answered in these columns in their turn. This requires considerable time, however, owing to the great number received. So, if a personal or quicker reply is desired, a stamped envelope must be enclosed with the question.—The Editor.

FOLEY PILLS BRING RESULTS

"FOLEY PILLS are the best I have tried. My kidneys work a lot better since I received your generous offer," writes John W. Brogan, Adams, Mass. FOLEY PILLS are a diuretic stimulant for the kidneys and while being taken close attention should be paid to the diet. Avoid sweets, pastry, starchy foods, alcoholic drinks, tea and coffee. Drink plenty of good fresh water, and keep the body warmly clothed. Refuse substitutes. Glendale Pharmacy, 638 East Broadway; Hub Pharmacy, Glendale and Colorado; Acacia Pharmacy, 922 South Glendale Avenue.—Advertisement.

for Railroad information
Phone 21 or 3306
Southern Pacific
121 So. Brand and 1st St. Glendale

Efficient Housekeeping

By Laura A. Kirkman

FEEDING THE CHILD OF SCHOOL AGE

TOMORROW'S MENU

Breakfast
Grapefruit
Cereal
Wholewheat Grittle Cakes
Maple Sirup Coffee

Dinner
Roast of Pork
Mashed Potatoes
Lima Beans Apple Sauce
Lettuce, French Dressing
Coffee Raisin Pie

Supper
Cottage Cheese Loaf with Pimento Sauce
Quick Biscuit
Cocoa Preserves
Cakes

Every child needs, daily, one quart of milk. This quart may be served in many ways—in soups, in puddings, or cereals, in the form of cocoa, or drunk from a glass. Children who do not like to drink milk can frequently be persuaded to do so after school, if ginger snaps or some kind of cookies are given with the milk. A few raisins and dates are also excellent for the child to eat after school (in place of candy).

"What beverages may my child drink?" is another question I am often asked. My answer is just plain milk or cocoa. Cocoa is not harmful to the child unless made with too much cocoa powder. It may be served at breakfast, in place of coffee in cases where a child has been allowed to form the coffee habit too early.

One mother recently wrote me that her fourteen-year-old boy insisted upon a cup of tea at breakfast and that his nerves were showing the effects of it. I replied that she must either give him cocoa instead, or else give him hot milk barley flavored with tea.

So many mothers write me to ask how they shall feed their children of school age. Here is a nourishing diet for children from 9 to 15 years old:

Breakfast—An orange, stewed prunes, or an apple. One helping of cereal if an egg is served; otherwise, two helpings of cereal. Milk on cereal and to drink. (Of course sugar on cereal.) Two slices of toast.

Noon Dinner—An ordinary serving of some meat. White potato or sweet potato prepared any way that requires no frying. Some sort of vegetable (one of the "bulky" vegetables should be served frequently—such as carrots, squash, beets, stewed celery, spinach or turnips; the stringy fibres of these vegetables are called "roughage" and act as a broom in sweeping out the intestines). Bread and butter. A simple dessert such as bread pudding, cornstarch pudding, custard or a fruit dessert.

All inquiries addressed to Miss Kirkman in care of the "Efficient Housekeeping" department will be answered in these columns in their turn. This requires considerable time, however, owing to the great number received. So, if a personal or quicker reply is desired, a stamped and self-addressed envelope must be enclosed with the question. Be sure to use your full name of street number, and the name of your city and state.—The Editor.

Copyright, 1923, George Matthew Adams.

Most of the 600 streets of Canton, China, are less than eight feet wide.

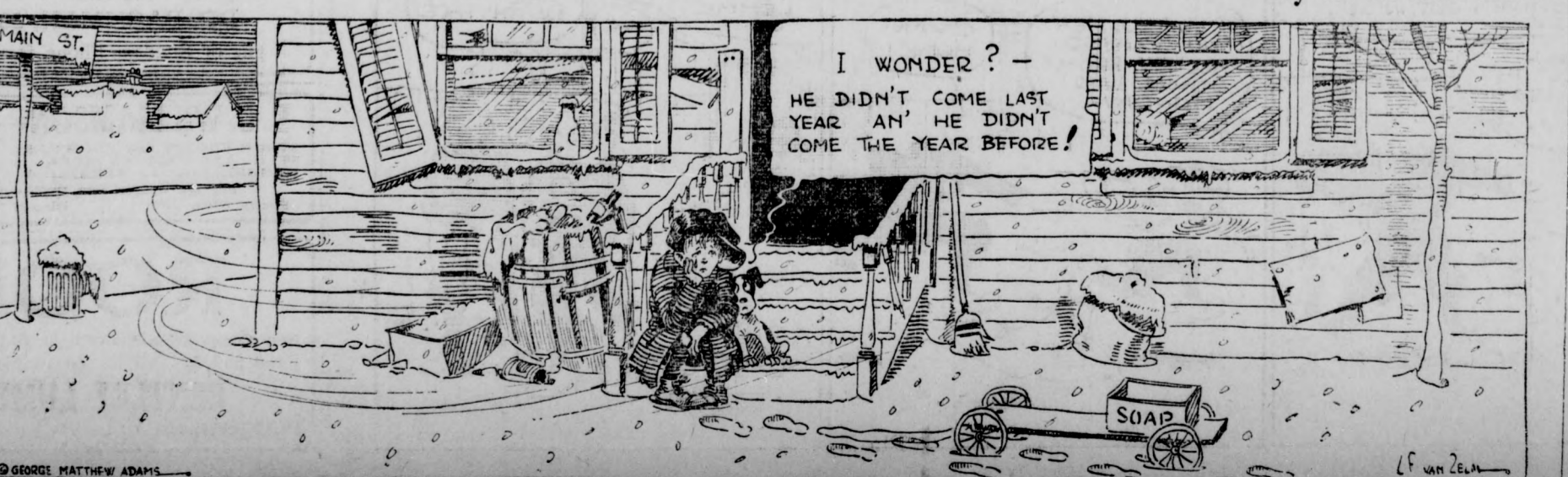
FREE TURKEYS
We're giving away a whole flock of 'em next Sunday, December 23, at Pershing Plains Tract. Come out—you may be lucky. Turn west on Central Ave., Burbank, and our signs will guide you. H. N. Stabeck Co., 6034 Hollywood Blvd., Phone 431-658. —Advertisement, 12-20-21-22.

THE MAIN THING ON MAIN STREET

Baily Buzz
MAIN STREET'S FRIENDLY NEWSPAPER

THE SKEPTIC

MEBBE THERE AIN'T NO SANTY CLAUS!



PHYSICIANS AND DENTISTS

EDWARD SWIFT, M. D.
PHYSICIAN and SURGEON
Suite 305 Lawson Bldg. Brand Boulevard and Wilson Ave.
Office Phone Glendale 2901
Residence Phone Glen. 1166-M

DR. R. W. SHERRED
DENTIST
Central Building, 111 East Broadway, Glendale, California
X-RAY Office Hours, 9-12, 1-5

DR. C. W. TAYLOR
DENTIST
Office, 111 East Broadway, Central Bldg. Hours, 9 to 11 a. m., 1 to 2 p. m., evenings by appointment.
Glendale Calif.

DR. J. P. LUCCOCK
DENTIST
Phone Glendale 455
620 East Broadway

DR. R. C. LOGAN
DENTIST
Latest X-Ray Equipment
Suite 305 Lawson Bldg. Brand Blvd. and Wilson Ave.

F. M. ROSSITER, M. D.
L. R. C. P., M. R. C. S., London
Office, 291-A W. Broadway
PHONES
Office Glendale 1035
Residence Glendale 525-11

Dr. Walter R. Crowell
DENTIST
Phone Gl. 2696, 111 E. Broadway
Suite 6, Central Building
GLENDALE, CALIFORNIA

Edmund H. Sawyer, M. D.
PHYSICIAN and SURGEON
Office and Residence Glen. 2839-M
1106-1110 E. Broadway

DR. S. A. ALLEN
DENTIST
314 Lawson Building
Glendale 2589
Corner Brand and Wilson

S. B. BELLINGER, M. D.
PHYSICIAN and SURGEON
Suite 319-329 Lawson Bldg.
143 North Brand Blvd.
Glendale, California.

DR. WM. C. MABRY
General Diagnosis and Medical Treatment
206 SOUTH BRAND BOULEVARD
Rooms 17-21 Monarch Building.
Hours, 1:30 to 5 p. m., Tel. Glen. 422; Residence 115 East Acacia Avenue. Telephone Glen. 270.

DR. FRANK N. ARNOLD
DENTIST
Suite 310 Lawson Bldg., over Kresses, Brand and Wilson Ave.
Hours, 9 to 12; 1:30 to 5
PHONE GLENDALE 458

Dr. I. R. Warren
DENTIST
101 W. Maple Ave.
Glendale 2627

DR. C. E. THOMPSON
ORTHODONTIST
Specializing in the Straightening of Teeth
312 Lawson Bldg.
Glen. 2279 145 No. Brand

Dr. F. R. Gartley
OPTOMETRIST
Eyeglass Specialist
111 East Broadway, Glendale.

R. W. HULETT, M. D.
EYE, EAR, NOSE and THROAT
305 Lawson Bldg.
Telephone Glendale 1590

RESERVED

Phone 195
Glen. 195
We Deliver!

Drug Service That Really Serves

ROBERTS & ECHOLS DRUG STORE
102 E. BROADWAY GLENDALE, CALIF.

Armstrong & Hoare
OPTOMETRISTS
COMPLETE OPTICAL SERVICE
100 East Broadway (at Brand) Glendale, California
"Specialists in the Conservation of Vision"

PHONE 198-R FOR APPOINTMENT
JESSE R. BROWN, PUBLIC ACCOUNTANT
Audits—Systems—Financial Statements—Monthly Bookkeeping
INCOME TAX SERVICE
FIVE YEARS' EXPERIENCE IN FEDERAL TAX WORK
Books closed and Returns Prepared in Accordance with Latest Government Rulings
GLENDALE 1808 101-A NORTH BRAND BLVD.

Our Christmas Display of Jewelry

is more complete and varied than ever before. We have given special care and attention to this selection.

Visit our store and let us show you the Gift possibilities in our display.

Diamonds, Watches, Clocks, Silverware, Cut Glass, Cash or Installments. Open Evenings Until Christmas

WALKER JEWELRY CO.
116 East Broadway

News Want Ads—Best Results

holiday Flowers



For Gifts and Holiday Festivities

FOR YOUR CHRISTMAS GIFT LIST

Poinsettias, Cyclamen, Begonias and other blooming and ornamental plants, single or in basket combinations.

Gift boxes or baskets of cut flowers—Roses, Carnations or other seasonable flowers.

Corsage Bouquets of Roses, Sweet Peas or your selection of Unique Wreaths, Holiday Decorations, Berried Plants.

You are cordially invited to visit our display of Christmas Flowers
Early Ordering Will Be Appreciated

The Glendale Florist

Phone Glendale 1155
Two Stores For Your Convenience
108 South Brand Boulevard 120 South Brand Boulevard
Florists' Telegraph Delivery

RADIO CALLS TO MUSICAL COMEDY

Everyone in Glendale Urged To See Benefit Show For Children

A radio was received from Santa Claus this morning. Dr. H. W. Harrower, Santa Claus' assistant in Glendale, received the message. It said "Have everyone in Glendale see the 'Oh-Ho' show tonight at the new High School Auditorium, as it means happiness at Christmas to the poor boys and girls of your city."

The "Oh-Ho" show tonight, is the biggest Christmas activity of its kind that has ever been sponsored here, as the Glendale Exchange Club are fostering this show for the purpose of getting money together that the managers of this city may have their Christmas wishes gratified. Every cent of the profits will be used to buy Christmas presents for the poor.

Pathetic Appeals

D. Ripley Jackson, postmaster, and president of the Exchange Club, said this morning "If the people of Glendale had any idea of the number of pathetic appeals that have been received in the mails here, addressed to 'Santa Claus', they would be sure to support the 'Oh-Ho' show. Thus far we have as many requests from poor children as we have had returns on the tickets for the show." And Postmaster Jackson handled the large stack of Santa Claus appeals that have come from the children of this community.

"We need more support for the show. We urge everyone who has been mailed tickets to use the tickets. We also ask a city-wide support for the show. If you have not been mailed tickets, go to Roberts' and Echols' Drug Store, or come out to the new High School Auditorium this evening and get your seats for this benefit. You will see the best musical show that has ever been staged in Glendale, and for the price of but fifty cents per ticket, and your fifty cents will never go to a better purpose than to the purchase of something that will make a Glendale child happy on Christmas morn."

Plenty of Seats

There are two thousand seats in the new High School Auditorium, and every seat should be filled tonight. There are still any number of good seats left to be sold.

The show starts at 8:15. The doors of the theatre will be open at 7:30. Reserved seats can be had at Roberts' and Echols' up until 7:30, after which the reserved seats can be had at the box office at the new High school. This is an event that should not be missed by any loyal Glendalean, for it is a fine show, at a bargain price, and the profits will be expended for a purpose commanding the attention of everyone.

Answer Santa Claus' appeal and be at the "Oh-Ho" show tonight. It will be the biggest evening of enjoyable entertainment you have had in a long, long time.

CLUB DIRECTORS PRAISE FIREMEN

Send \$100 Check to Express Appreciation of Work In Recent Fire

The services rendered the Sunset Canyon Country club by the Glendale fire department under Chief A. H. Lankford, during the nights of December 10 and 11, when a fire in Stough canyon, threatened to destroy the club-house, if it reached Sunset canyon, were rewarded today by the receipt of a check for \$100 as a contribution to the Firemen's fund, from the directors of the golf club.

Twice during that eventful afternoon and night, when the flames threatened the club-house, the Glendale fire department responded immediately to urgent calls for help, the second time hooking one of their pumps to the swimming pool near the club-house, and assisting materially in saving the building.

The letter from the club follows:

Mr. A. H. Lankford, Fire Chief, Glendale, California.

Dear Sir:—At last night's session of the board of directors of the Sunset Canyon Country Club, motion was unanimously carried that the club express its sincere thanks and appreciation to the trustees of the City of Glendale, and to Fire Chief Lankford, for the splendid co-operation, aid and assistance given the club on the evening of Monday, December 10, and the morning of Tuesday, December 11, when the club's property was in such imminent danger of being burned, and that, as a small token of our appreciation, a check for \$100 be tendered to Fire Chief Lankford as a contribution to the Firemen's fund.

In conformity with the above motion, I beg to hand you herewith the club's check.

Assuring you that your thoughtfulness and kindness will ever be appreciated by members of the club, we are,

Yours gratefully,
The Sunset Canyon Country Club,
By T. H. Bridges, Secretary.

MODERN WINGED FEET

Another new instrument of locomotion has appeared on the streets of Paris, and has instantly sprung into favor. It is known as the paticycle, and it is a miniature cycle, wheel with cushion tires, strapped to each foot and leg. An average speed of twelve miles an hour can be maintained.

Los Angeles Times Annual Midwinter Number

Out January 1st.



—It will surpass all previous editions, consisting of seven beautiful magazines, each set enclosed in a wrapper ready for mailing, a total of 240 pages. Profusely illustrated with color-plates, artists' sketches, and half tones. It sets forth the whole wonderful story of Southern California culminating in the tremendous growth and development of 1923.

7 Big Magazines 15¢

Send Copies to Your Eastern Friends

Telling more than you could write in a thousand letters, the seven Midwinter Magazines will take the reader on a pictorial and explanatory sight-seeing trip from seacoast to mountains, through cities and towns, over valleys and plains from semi-tropical gardens to bleak deserts. Included in the voluminous contents are:

- What Southern California is, does and has
- What it stands for.
- How it works and plays.
- What its goal is.
- What it manufactures.
- What it grows.
- What it mines from the earth.
- What it fishes from the sea.
- World-beating harbor.
- How it educates its young.
- Behind the scenes at movieland.
- New departments on Hawaiian Islands and Mexico.

- Building activities.
- What the tourist sees at mountains and seacoast.
- Vistas of homes and gardens.
- Achievements in literature, art, music, drama and science.
- Churches, clubs, theaters, hotels.
- Views of business district.
- Snow-capped peaks and orange groves.
- The romance of bygone days.
- The magnitude and importance of the vast Southwest Empire of today.

For the Convenience of Patrons, The Times will mail copies direct from its mailing department to your Eastern friends and relatives providing lists of names are furnished, accompanied by proper payment.

Mail rates: Copies will be sent postage paid to any point in United States, Canada or Mexico, at 25c; to other countries at 35c.

Order blanks may be obtained from your local Times agent whose name appears below, and who will receive and forward lists of names; or, if more convenient, you can bring or mail lists to the Times main or branch offices.

Order in Advance. Each year, thousands of orders for the Annual Midwinter Number arrive too late to be filled. This year, due to the fact that everyone will want to send away more copies than ever before, it is especially desirable to place orders well in advance. To co-operate in giving the widest possible circulation to Southern California's amazing 1923 development, The Times has kept the selling price the same as last year, notwithstanding the heavy cost of publication and the increase in number of magazines from five to seven.

Times Glendale Agent — T. M. FURST, 100 S. Maryland Phone 1402

Let ALL the Family Enjoy the Christmas Season

Instead of hurrying home to eat when doing your last-minute shopping—drop into Lamson's—to eat and rest.

You are sure to enjoy our

SPECIAL SUNDAY DINNER AT \$1.00

Delightful Pastry and Cakes	Candies and Ice Cream	Delicious Fountain Drinks
-----------------------------	-----------------------	---------------------------

Lamson's Confectionery & Cafe

(Successor to Cook's)
128 South Brand Boulevard, Glendale

MOTOR SALESMEN TO HAUL VOTERS

Jesse E. Smith Force Places Cars at Disposal of Bond Supporters

Transportation for voters who desire to support the sewer bonds at the election to be held on January 8, is assured by the action taken by the sales force of the Jesse E. Smith Company, 115 West Colorado street, Ford distributors, at the dinner that was given them when Mr. Smith and Wallace Tupper, the Montrose Ford agent, returned from their hunting trip north this week.

When the salesmen met for the duck and goose dinner at the Glendale Tavern, every man in the organization endorsed the sewer bonds, and every man who owns a car declared his readiness to devote the entire day to seeing that the supporters of the bond issue reached the polls, no matter what precinct he or she lives in.

Mayor Spencer Robinson addressed the gathering and commended the Ford salesmen for their patriotic spirit in what he declared to be one of the most vital emergencies Glendale has ever been called on to face.

News Classified Ads for results.

NEWS CLASSIFIED ADS FOR BEST RESULTS

BECKER'S DRUG STORE

114 North Brand—Phone Glen. 2171

Serves and Sells

COMALT

Hot and Cold

At the Fountain—and for Household Use

Christmas Stocks, Prices and Spirit
WE ARE AT YOUR SERVICE

Turkeys

Ducks Geese

Roasters, Hens Fryers, Broilers

You Select the Live Bird—We Dress Them While You Wait

WILLIAMS POULTRY CO.

1110-1112 South San Fernando Road
Phone 869-M We Deliver

Leaving Los Angeles Harbor Jan. 30

Around The World

ON THE PALATIAL NEW 10,000 TON CUNARD LINER "LACONIA"

AN incomparable four months cruise under the personal escort of Mr. Frank C. Clark who has conducted 22 notably successful Mediterranean and Around the World Cruises.

Join the party of Southern Californians who will enjoy this wonderful trip on the new, specially chartered Cunard Liner "Laconia", one of the most luxuriously fitted, steadiest and finest ships in the Atlantic Service.

No overcrowding—first class throughout, including every necessary expense—shore excursions; guides; fees; hotels; drives; etc., etc. Stop over privilege in Europe. Also numerous side trips at slight extra expense if desired.

A few reservations are yet available at \$1500 and Upwards—first class.

No reservations accepted after January 1st. Phone or write

FERGUSON STEAMSHIP AGENCY

751 South Spring Street - Los Angeles
Metropolitan 5551

News Want Ads—Best Results

The Gateway GLENDALE'S NEWEST THEATER. SAN FERNANDO ROAD & BRAND BLVD. "MEET ME AT THE GATEWAY"

SATURDAY ONLY 2:30, 6:45 and 9:00	SUNDAY ONLY Continuous from 2:30
--------------------------------------	-------------------------------------

George M. Cohan's Stage Production
"The Meanest Man In The World"
with BERT LYTTELL, BLANCHE SWEET, BRYANT WASHBURN

Richard Barthelmess in
"The Fighting Blade"
A Swashbuckling Story of England in the Days of Cromwell

COMMENCING MONDAY
"TO THE LADIES"
with EDWARD HORTON, THEODORE ROBERTS, Etc. Also

Cortello's Comedy Circus
The Only Troupe of Trained Gold Medal Fox Terriers in the World

CHURCHES

Special services in Glendale churches tomorrow will bring the message of Christmas to Glendale churchgoers. In some churches there will be elaborate musical programs, and in others simply Christmas messages from the pastors.

Preliminary to these church gatherings and of special interest to Glendaleans, who will not be able to attend any service is the following Christmas message from Rev. J. C. Livingston, pastor of the Casa Verdugo Methodist church and president of the Glendale Ministerial association.

"Even as with wreaths of holly we garland things, so also do we bring the gold, and frankincense, and myrrh of our devotion, to garnish the hours of this Merry, Merry Christmas time.

"What a wonderful event we celebrate. The very angels, as they sang must have trembled that God would dare to hang so great potentiality upon anything so beautiful, and so frail, as a little baby. But, you see, that is God's way of doing great things. This very Son of God, when He would open windows that we might the better see—and hear—divine idyl, seemed always to embody that which was to be the very greatest, in characters that at the first seemed so very small.

"To him the greatest faith was as a grain of mustard seed, the greatest providence had to do with insignificant sparrows. The greatest alms—a widow's mite, and the greatest beneficence had to do with some little leaves, and fishes, in the lunch basket of a curious lad.

"Nobody knew, as God knew, that from that obscure cradle there lullabies blended with the mooing of the cattle, and the bleating of the sheep, there would come on through the years a personality so obtrusive as to divide time in his name and make his name an absolute necessity to the legality of all commercial and judicial activity. A personality so commanding as to derive the Caesars from the throne and build in place of paganism a civilization in modern history; art, music; literature and language of which his name would rank pre-eminently. Surely we do well to honor him, the Christ, the Son of the Living God—Our Saviour."

St. Mark's Episcopal
Church at corner of Harvard and Louise streets. Rev. Philip W. Kemp, rector. Holy Communion, 7:30 a. m.; evening prayer, 7:30 o'clock.

Christmas services, Holy Communion (Christmas eve) 11:30 p. m.; Holy Communion (Christmas day) 10 a. m.

Wednesday, December 26, St. Stephen's day, Holy Communion, 10 a. m. Thursday, December 27, St. John's day, Holy Communion, 10 a. m. Friday, December 28, Holy Innocents' day, Holy Communion, 10 a. m.

Vested choir, Mrs. Charles A. Parker, director; Mrs. Joseph Klitt, organist.

Music Sunday morning, professional. "Rejoice, Rejoice Believer"; Venite (Crotch); Benedictus es Domine (Steggall); Benedictus (Handel); Introit, "O Thou Who Didst With Love Untold"; offertory, contralto solo, "He Shall Feed His Flock" (Handel); recessional, "O Come, O Come, Emmanuel."

Sunday night, professional, "We Love Thy Place O Lord"; magnificent (Smart); Nunc Dimitte (Russell); offertory, "Tarry With Me, O My Saviour"; recessional, "O Happy Band of Pilgrims."

Christmas eve, professional, "O Little Town of Bethlehem"; communion response (Merbecke); carol, "The First Noel"; offertory, "Silent Night, Holy Night"; recessional, "It Came Upon the Midnight Clear."

Christmas morning, professional, "Hark, the Herald Angels Sing"; communion response (Merbecke); introlit, "Calm on the Listening Ear of Night"; offertory, "The First Noel"; (traditional melody); recessional, "Christians Awake, Salute the Happy Morn."

First Baptist
Church at corner of Wilson avenue and Louise street; Rev. Ernest E. Ford, pastor; Rev. Charles H. Tilden, associate pastor; H. W. Carver, musical director; Eva

Wilson avenue. Rev. C. M. Calderwood, pastor; O. E. Von Oven, church school superintendent; Howard Edward Cavanaugh, director of music; Miss Lilla E. Litch, organist; church school 9:45 o'clock; morning worship 11 o'clock; sermon by Mr. Calderwood. "The Wonderful Jesus"; Christian Endeavor, 6:30 o'clock; evening service, 7:30 o'clock.

Music in morning, organ prelude, "Offertory on Christmas Hymns" (Guilmant); quartet, "O Little Town of Bethlehem" (Sant); offertory, "Cantique de Noel" (Adam); duet, "There Was Joy in Heaven" (Smart); soprano solo, "Christmas Message" (Dressler), by Mrs. J. D. Cole; postlude, "Nachspiel" (Noble).

At night, organ prelude, "The Holy Night" (Buck); cantata for Christmas, "The Shepherd's Vision" (Irenece Berge); offertory, "March of the Magi Kings" (Dubois); postlude, "Christmas Postlude" (Best).

First M. E.
Church at corner of Wilson avenue and Keawood street. Dr. Henry I. Rasmus, Sr., pastor; Rev. Henry I. Rasmus, Jr., associate pastor. Sunday school (graded) 9:30 o'clock; Prof. A. W. Tower, superintendent; Miss Isabelle Isgrig, musical director; Mrs. T. W. Randall, organist. Sunday school 9:30 o'clock; morning worship 11 o'clock; sermon by Dr. H. I. Rasmus, "What is Jesus to You This Christmas Time?"; young people meet at the usual hour; evening service 7:30 o'clock in charge of the choir.

Music in morning, prelude, "Paraphrase on a Christmas Hymn" (Paulkner); "Hallelujah Chorus" (Handel); anthem, "The Angels' Song" (Dressler); solo, "I'll Tell You" (Luther); Genevieve Mulligan; offertory, duet, "O Holy Night" (Adams), by Miss Isgrig and Dorothy Peart; postlude, "Christmas March" (Eddy).

At night, prelude, "Christmas Pastoral" (Harker); duet, quartet, "Sing, O Heavens" (Tours); chorus, "Nazareth" (Gounod); quartet, "Birthday of a King" (Neidlinger); reading, "The Other Wise Man" (Henry Van Dyke); Miss Jennie Lacy; solo, "There Were Shepherds" (Scott), by Miss Isgrig; postlude, "A Christmas Song" (Diggie).

Glendale Presbyterian
"Church of the Lighted Cross" Harvard and Louise streets. Rev. W. E. Edmonds, pastor; Rev. Louis Tinning, assistant pastor. Morning worship 11 o'clock. Glendale Theatre doors open at 10:30 o'clock; sermon, topic, "The Christmas Splendor"; fully graded Sunday school 9:30 o'clock, in new church building; Men's Bible class 9:30 o'clock in city hall; Christian Endeavor meeting 3, 6 and 6:15 o'clock; evening service 7:30 o'clock in new building, sermon by pastor, "The Christmas Testimony"; mid-week service Wednesday night 7:30 o'clock.

Music in morning at Glendale Theatre; organ recital, 10:40; vocal solo, "The Christmas Testimony" (Hollins), (a) "Chant de Bonheur" (Lemare), (c) "Holy Night" (Buck); soprano and contralto duet, "The Holy Night" (Adams), Mrs. Mina Wenzel and Miss Tilda Rohr; prayer response, "Hear and Answer" (Holton); violin solo, "Ave Maria" (Bach-Gounod), Miss Hazel Linkogel; bass solo, "The Glorious Morning" (Neidlinger), Norman W. Kele; anthem by the quartet, "Sing, O Heavens" (Tours); postlude, "Grand Finale" (Guilmant).

At night in the new church building: Prelude, "March of the Magi Kings" (Dubois), Otto T. Hirschler, organist-director; anthem by the Shepherd's Quartet, "O Little Town of Bethlehem" (traditional); carol, "The First Noel" (traditional); soprano solo, "Come Unto Him" from "The Messiah" (Handel), Mrs. Mina Wenzel; anthem, "Sing, O Heavens" (Tours); carol, "The Holy Night and Peaceful Night" (Folk song); postlude, "Hallelujah Chorus" from "Messiah" (Handel).

Christian Science
Church at corner of Maryland and California avenues. Sunday service at 11 and 8 o'clock. "Is the Universe Including Man, Evolved by Atomic Force?" Testimonial service on Wednesday night at 8 o'clock. Reading room, Ralph building, open daily except Sundays and holidays, 12 until 5 o'clock; Tuesday, Thursday and Saturday 7 until 9 o'clock.

Central Christian
Church at Colorado and Louise streets. Rev. Clifford Cole, pastor; Floyd Mercer, superintendent; Viva Lee Weidman, choir director. Church school 9:30 o'clock, with the following departments: Cradle roll, beginners, primary, junior, intermediate, high school, young people and adult, graded instruction; morning worship and Christmas pageant, "The Shepherds' Christmas," 10:30 o'clock, directed by Mrs. D. M. MacKay; three young people's societies of Christian Endeavor 6:30 o'clock; evening service 7:30 o'clock, in charge of choir.

Music in morning: "Prelude" (Neilson), Mrs. M. G. Musser; Christmas carol, a trio, "We Three Kings of the Orient Are" (Hopkins), Messrs. Gordon Mize, Chas. W. Collom, Devoine Davidson; anthem, "There Were Shepherds" (Marzo), Mrs. F. Mercer, Chas. W. Collom and the choir; contralto solo, "The Virgin's Lullaby" (from "The Coming of the King" by Buck), Mrs. Viva Lee Weidman.

At night, prelude, "Noel Ecosais" (Guilmant), Mrs. M. G. Musser; processional, "Come, All Ye People" (reading); anthem, "Sanctus (Holy, Holy, Holy)" from St. Cecilia, by Gounod, Mrs. C. C. Stoler and the choir; soprano solo, "While Shepherds Watched" (Bliss), Mrs. Floyd Mercer; anthem, "God So Loved the World" (from "The Crucifixion" (Stainer); offertory, "Trinity Chimes" (Decker), Miss Florence Heacock; indies' quartet, "The Lord is My Shepherd" (Schubert), Mesdames C. C. Stoler, Floyd Mercer, R. P. Jodon and Viva Lee Weidman; baritone solo, "The Birthday of a King" (Neidlinger), Harry Marple; anthem, "Brightest and Best of the Sons of the Morning" (Combs), Mrs. Stoler, Mrs. Collom and the choir, with violin obligato by Miss Beatrice Bolen; response, "The Lord Bless Thee" (Herbert); postlude, "by Tridenny."

Seventh-Day Adventist
Church at corner of Isabel street and California avenue; Elder R. W. Parmele, pastor; Sabbath school (Saturday) 9:30 o'clock; preaching service 10:45 o'clock; preaching Sunday night at 7:30 o'clock; district prayer meetings in fourteen districts of the city, in the church Wednesday night at 7:30 o'clock; Y. P. M. W. Friday night at 7:30 o'clock.

Holy Family Catholic
Church at corner of Elk and Louise streets. Rev. Michael Galvin, parish priest; Rev. Patrick Curran, assistant. Masses at 6:30, 8, 9:30 and 10:30 o'clock. Rosary service closing with benediction at 7:45 o'clock. For the convenience of the congregation, four masses will be held every Sunday.

Gospel Tabernacle
(Christian and Missionary Church at corner of Louise and Chestnut streets. Rev. C. H. Chrisman, pastor. Sunday school 9:30 o'clock; morning service 11 o'clock; sermon by Rev. W. W. Newberry of Seattle, dean of the Simpson Bible Institute and district superintendent of the Christian and Missionary Alliance; young people's meetings and prayer meetings for adults at 6:30 o'clock; evening service 7:30 o'clock; sermon by Rev. Chrisman, "The Four Judgments of the Bible With Special Reference to the Judgment Seat of Christ," fourth in a series on the "Second Coming of Christ."

Pacific Avenue M. E.
Church at the corner of Harvard street and Pacific avenue. Rev. H. C. Mullen, pastor. Sunday school 9:45 o'clock; morning worship 11 o'clock; sermon by Rev. Mullen, "The Name That is Above Every Name"; Epworth League 6:30 o'clock, leader, Miss Mary Mullen; evening service 7:30 o'clock, sermon by Rev. Mullen, "The Star of Bethlehem," reading of Van Dyke's "The Other Wise Man" by Mrs. Donald McGill.

The Connor trio will give two special numbers at the morning service. There will be special numbers by the choir at both services.

Zion Evangelical Lutheran
(Missouri Synod) Church at corner of California avenue and Isabel street. Rev. Henry O. Kringle, pastor. Miss Mildred Fischer, organist. Sunday school 9 o'clock; communion 9:30 o'clock; morning worship 10 o'clock, sermon by Rev. Kringle, "John's Record of the Christ"; Gospel lesson, John 1, 19-28, "John's Testimony of Christ"; Christmas Eve celebration December 24 at 8 o'clock.

Tropico Presbyterian
Church at corner of Central avenue and Laurel street; Dr. James Winnard, pastor; Sunday school 9:30 o'clock; morning worship 11 o'clock, sermon by Dr. Winnard, "Fasting Along the Christmas Message"; young people meet at the usual hour; evening service 7:30 o'clock, sermon by Dr. Winnard, "What Must I Do to Be Saved?"

Special music in the morning, "Noel" (Adam) by Miss Campbell; violin obligato by Herbert Bruck; choir will sing, "Come All Ye

Glendale Theatre

Wm. A. Howe Lessee and Sole Manager

MATINEE, 2:30 EVENING, 7:00 AND 9:00

GLADYS WALTON

In a Vivid Story of American Youth

"THE WILD PARTY"

Today, Wild Pleasure—Tomorrow, Reckoning

FIVE ACTS

STANDARD VAUDEVILLE

GABBERTS TRIO Comedy Acrobats	DEL A PHONE Novelty Vocalist
RICARDO & ASHFORTH Frills and Thrills	
WALKER & BROWN The Please U Two	LONNIE NACE Comedienne

BE WISE AND BE EARLY

MATINEE AT 2:30 **SUNDAY** EVENING AT 7:30 ONLY

A Living Document of the Real West
The Seven-Part Action-Drama

"PIONEER TRAILS"

The Story That Envisions the Time of Custer
The Romantic Day of Days
With

Cullen Landis—Alice Calhoun
Bertram Grassby—Otis Harlan

CURRENT EVENTS—AESOP'S FABLES

"THE DIPPY DOO DAD COMEDY "STEPPING OUT"

PAUL CARSON
At Southland's Greatest Organ

Make Reservations Now For

CHRISTMAS DINNER

at the

Chateau de Qualite

EDWARDS & DENNIS
108 East Broadway

Served 11 A. M. to 8 P. M.

MENU

Fresh Shrimp Cocktail	Saltines
Chicken Bouillon	Roast Stuffed Young Domestic Duck
Roast Antelope Valley Turkey with Chestnut Dressing	Barley Dressing Jelly
Snowflake Potatoes	Steamed Brussels Sprouts
Plum Pudding, Liquor Sauce	
Fresh Apple Pie	Hot Mince Pie
Pumpkin Pie	Devil's Food Cake
Coffee Tea Milk Cocoa	
Frozen Nesselrod's Pudding	

Per Plate

\$1.50

GOSPEL TABERNACLE

LOUISE AND CHESTNUT

SUNDAY NIGHT

"THE FOUR JUDGMENTS OF THE BIBLE"

REV. C. H. CHRISMAN—Pastor

December 30th

"THE BANQUET IN THE SKIES"

7:30 P. M.

At night, prelude, "Noel Ecosais" (Guilmant), Mrs. M. G. Musser; processional, "Come, All Ye People" (reading); anthem, "Sanctus (Holy, Holy, Holy)" from St. Cecilia, by Gounod, Mrs. C. C. Stoler and the choir; soprano solo, "While Shepherds Watched" (Bliss), Mrs. Floyd Mercer; anthem, "God So Loved the World" (from "The Crucifixion" (Stainer); offertory, "Trinity Chimes" (Decker), Miss Florence Heacock; indies' quartet, "The Lord is My Shepherd" (Schubert), Mesdames C. C. Stoler, Floyd Mercer, R. P. Jodon and Viva Lee Weidman; baritone solo, "The Birthday of a King" (Neidlinger), Harry Marple; anthem, "Brightest and Best of the Sons of the Morning" (Combs), Mrs. Stoler, Mrs. Collom and the choir, with violin obligato by Miss Beatrice Bolen; response, "The Lord Bless Thee" (Herbert); postlude, "by Tridenny."

At night the choir will sing "Silent Night" and "The Birthday of the King."

First Lutheran
"The Friendly Church." Church at 233 South Kenwood street. Dr. H. C. Funk. Sunday school 11 o'clock; morning worship 10 o'clock; sermon by Dr. Funk, "The Meaning of the Manger or Born of the Virgin Mary"; Christmas program by the school at 7:30 o'clock.

Christmas anthems will be sung by the choir, led by J. H. Nielsbank.

Bethel Chapel
Meets at 633 East Colorado street. Arthur W. Frodsham, pastor. Sunday school 10 o'clock; morning worship 11 o'clock, sermon by Rev. Frodsham, "The Incarnation, Its Meaning"; in charge of students from the Southern California Bible school, special singing. Lecture Thursday night, 8 o'clock, "Signs of the Times."

Casa Verdugo M. E.
Church at corner of Park and North Central avenues. Rev. J. C. Livingston, pastor; Sunday school 9:45 o'clock; George E. Tyrell, superintendent. Morning worship 11 o'clock, sermon by Rev. Livingston, "Waiting, a Christmas Thought"; young people meet at the usual hour; evening service 7:30 o'clock, cantata, "The Angelic Choir" (Adams), soloists, Mrs. Waldo Winger, Mrs. R. D. Jones, Mrs. J. H. Burris, Mrs. Cordray, Mrs. J. W. Cotton, R. D. Jones, J. W. Cotton and Harry Gaddis.

Broadway Methodist Church
Church at Broadway and Cedar. Rev. L. J. Millikan, pastor. Will McGillis, musical director. J. N. McGillis, superintendent. Sunday school 9:45 o'clock; morning service 6:30 o'clock; evening service 7:30 o'clock; sermon by Rev. Millikan, "Behold the Man," special music.

Nazarene Church
Evangelistic services being held in the Brethren church at the corner of Glendale and Park avenues, will close tomorrow. The morning service will be held at 10:30 o'clock. Sunday school at 2 o'clock; preaching service 3 o'clock; young people's meeting 6:30 o'clock; evening service 7:30 o'clock, preaching by Rev. Hatfield, "Hoosier Evangelist."

Latter Day Saints
Services in K. of P. hall at the corner of South Brand boulevard and Park avenue. Teacher training class, Clara M. Pinkston, instructor, 9 o'clock; J. H. Krenke, superintendent. Sunday school 10:30 o'clock; preaching (Continued on page 6)

CHRISTMAS

Service at the

GLENDALE THEATRE

(Auspices Presbyterian Church)

SUNDAY, December 23, 11 A. M.

A Great Musical Program
Sermon by the Pastor, W. E. EDMONDS

"The Christmas Splendor"

EVENING, 7:30, Social Hall, New Church Building, Harvard and Louise Sts.

Big Program of Christmas Music
The Pastor will speak on
"The Christmas Testimony"
The Public Invited to Both Services

At night, prelude, "Noel Ecosais" (Guilmant), Mrs. M. G. Musser; processional, "Come, All Ye People" (reading); anthem, "Sanctus (Holy, Holy, Holy)" from St. Cecilia, by Gounod, Mrs. C. C. Stoler and the choir; soprano solo, "While Shepherds Watched" (Bliss), Mrs. Floyd Mercer; anthem, "God So Loved the World" (from "The Crucifixion" (Stainer); offertory, "Trinity Chimes" (Decker), Miss Florence Heacock; indies' quartet, "The Lord is My Shepherd" (Schubert), Mesdames C. C. Stoler, Floyd Mercer, R. P. Jodon and Viva Lee Weidman; baritone solo, "The Birthday of a King" (Neidlinger), Harry Marple; anthem, "Brightest and Best of the Sons of the Morning" (Combs), Mrs. Stoler, Mrs. Collom and the choir, with violin obligato by Miss Beatrice Bolen; response, "The Lord Bless Thee" (Herbert); postlude, "by Tridenny."

"FANSET" DYE WORKS

None Better

COURT SHOP NO. 1, 213 EAST BROADWAY, PH. GLEN, 155. We Own and Operate Our Own Cleaning Plant.

COMALT

And Every Other Christmas Specialty

Together With

Up-to-Date Courtesy,
Service and Quality

at

GLENDALE GROCERTERIA

116 North Brand Blvd.

Your Christmas Trade Belongs to Glendale



DEVELOPMENT SECTION

INDUSTRY - BUILDING - SUBDIVISION - REAL ESTATE



PART THREE

GLENDALE, LOS ANGELES COUNTY, CALIFORNIA, SATURDAY, DECEMBER 22, 1923

PAGES 1 TO 4

STATE LAWS AID HOME BUYER

Protection Afforded Real Estate Purchaser By License Rulings

More than 38 per cent of the people living in the United States are now protected in the purchase and sale of real estate by state supervision, according to a survey of the operation of real estate license laws now being made by the National Association of Real Estate Boards, from reports given by real estate commissioners.

The higher the requirements made for applicants for a real estate dealer's license the more satisfactory the operation of the license system, the association's investigation finds. The report predicts a gradual rise in requirements and with that a gain in the general attitude of the public toward the real estate business.

In a number of states commissioners report that the public would now support a stiffening of license requirements.

"The unscrupulous dealer in the real estate field is as great a menace to society, works as great hardship upon its members and destroys as much accumulated wealth as the defaulter banker," the report states in expressing the demand within the real estate business itself for the operation of state licensing systems "with teeth."

"The real estate business is as much entitled to protection from the ignominy of unscrupulous dealers as the business of banking is from swindling operations by the unreliable bond broker."

Partial statistics indicating the extent and working of the license system to inquire into the responsibility of dealers undertaking to offer real estate investment, are summarized as follows:

States having passed real estate license laws represent a total population of forty millions. Licensed brokers number 62,407. (Continued on Page 2)

Realty Board's Precinct Captains to Start Drive For Sewer Bonds Monday

By RALPH A. LIND
Of The Evening News Staff.

The precinct captains who were appointed on Wednesday by the Glendale Realty Board to have charge of the organization's campaign to secure the passage of the bond issue of \$1,600,000 for the proposed Glendale sewer system, will meet at the offices of the Glendale Realty Board in the Central building at 9 o'clock on Monday morning, on the call of the chairman, C. W. Ingledue, when the plans for the campaign will be outlined and the organization will start working at once to put the bonds across with a sweeping majority.

All the members of the Realty Board have agreed to furnish at least one car from the office of every member firm to carry voters to the polls on election day, January 8, 1924.

The work that has been done by the Glendale Realty Board's sewer committee, under the leadership of C. D. Thom, on behalf of the sewer bonds, has occupied the attention of the officials and the members for several weeks past, at times, it is admitted, to the exclusion of other more personal business, as the members of the organization realize that the construction of a modern sewer system is a vital factor in the development of the city.

Urged Registration

Among their accomplishments has been the sending of speakers to the various local theatres during the time when the registration books were open, urging the patrons of the places of amusement to place their names on the lists. They have prepared slides that will be shown at the theatres for some time prior to the election, and in this plan they have received the generous co-operation of every theatre in the city.

Three thousand stickers have been printed and distributed through the Realty Board, urging support of the bonds, and an additional 5,000 smaller stickers, reading "Yes, Jan. 8" will be broadcast, to be placed in the houses of the Glendale citizens between now and election day.

Essay Contest

The essay contest on the need for sewers that was carried on in the local schools, under the auspices of the Realty Board, attracted the keenest interest among the pupils of all grades, as was shown by the hundreds of essays that poured into the offices of the board.

In this task the teachers of the local schools lent their aid unstintingly to educate the pupils on the need for sewers.

Among the plans that are now under consideration, is a monster parade that will mark the passage of the \$10,000,000 mark in building permits for 1923, and this celebration will be combined with a boost for the sewers that will, it is predicted, galvanize the residents of the city into a very fervor of enthusiasm for the bonds and the construction of a modern sewer system in the city than can reach ten million dollars' worth of new buildings in the short space of twelve months.

Employ Extra Help

Extra office help has been employed by the Realty Board for the time that the campaign lasts, and the headquarters of the sewer committee will be maintained at the office of the board in the Central building, so that every worker in the organization may have the entire resources of the board at his disposal during the time the campaign lasts.

The "Boost Sewer Bonds" line that is being carried by the members of the Glendale Realty Board at the foot of their advertising, is impressing itself on the minds of the people as showing the intense earnestness of the realtors of Glendale, who are working tooth and nail to insure the passage of the bonds.

Evil will dispense with your sinner self just as fast as your strength yields.

A pessimist chokes the optimism within; the optimist kills the pessimism within.

MODEL FARM OWNED BY HOOVER CONVENTION PLANS ARE OUTLINED

Old Glory Is Silent Watch Over Show-Place of San Joaquin Valley

By GIL A. COWAN
Special to The Evening News

BAKERSFIELD, Dec. 22.—An American flag, visible for miles, is to be seen on the road to Shafter and Wasco, west from the state highway through northern Kern county.

The writer had occasion to drive through the section today and, of course, Old Glory hoisted to the skies excited a natural curiosity. What was it, a holiday, or a government station?

Well, it might be the latter, for it is none other than the Hoover ranch—owned by the secretary of commerce of the United States, and his associate, Ralph Merritt.

Herbert Hoover is perhaps, known best as food controller during the war. Mr. Merritt has made a name for himself as head of the raisin growers' association.

Model Farm

Together they own 1,200 acres of land which they are making into one of America's largest model farms. Harvey Kilburn is the man in charge of the venture which keeps seventy-five ranch hands busy.

They are experimenting with vegetables, having set out twenty-five acres of lettuce last year and forty-five acres of cantaloupe. Another ninety acres are in Thompson seedless grapes, and 220 acres in fruit trees.

Secretary Hoover is a firm believer in cotton, and more than 100 pickers are finishing the work on 250 acres. The crop is ginned at Wasco and proved very remunerative this year at thirty-four cents a pound.

Fruits and vegetables from the farm will bear the "Hoover" label, and it is intended that they become famous in time. Another unusual feature for the farm, is (Continued on Page 2)

Taxation Problems

The coming session, which will take up in matters of public policy the taxation question, in both its national and its local aspects, and which, in matters of interest to the organization itself, will have before it decision as to putting the financing of the association's work on a business basis that would insure the effectiveness of the large undertakings on which it is engaged, is expected to be one of the most important gatherings of real estate men nationally ever held. All members of constituent real estate boards, are invited to take part in the meeting. (Continued on Page 2)

Sewers Mean Protection Of City's Domestic Water Supply From Pollution

The importance of a good domestic water supply is realized and appreciated by every person living in Southern California. To provide for future growth and population means that every available source of surface and underground supply must be conserved and protected from pollution.

Many of the cities, including Glendale, in this region, obtain their domestic water supplies from underground sources and even the City of Los Angeles, which many people think is supplied entirely by the Owens River Aqueduct, obtained twenty per cent of the total water used in the past three years from the Los Angeles River drainage basin and wells, according to the twenty-first annual report of the Board of Public Commissioners.

A part of the Glendale water supply is obtained from a shallow water stratum in Verdugo Canyon, which several years ago was in danger of being condemned on account of possible contamination by use of cesspools being sunk into or close to this water-bearing area. The wells along San Fernando road take water from a water stratum that underlies the City of Glendale. The Los Angeles wells near Griffith Park to the south west of Glendale, also penetrate the underflow of the San Fernando valley and surrounding territory. The general inclination or flow of this water plane naturally follows the slope of the ground, being in a general direction of the valley slope and from the mountains and higher ground on each side.

The continued use of cesspools and the discharge of sewage into the porous soil overlying this water plane, will saturate this soil and the effluent will drain into the water-bearing strata. The natural purifying agencies of the soil will be exhausted and overloaded to the extent that eventually this water supply will be contaminated and the water supply condemned.

The water supply is now chlorinated to remove all possible dangerous contamination, but sometimes accident may happen to the chlorination plant, and it will be out of order for a short period and the supply left unprotected. Pittsburg, Calif., had a similar experience in 1920, causing between 125 and 150 cases of ty-

Monrovia Realty Men To Aid Home Builder

Formation by the local real estate board of a corporation for the purpose of financing the building of homes in their community is the project reported to the National Association of Real Estate Boards from Monrovia, Calif. The plan as launched by the Monrovia Realty Board is to aid home-builders who have not the entire amount necessary over and above the first loan as made by a savings bank or individual.

The Camden, N. J., Real Estate Board has formed a building and loan association. The Davenport, Fla., Realty Board is now forming such an association.

Fall and spring routes taken by a bird in going from and returning to this country are often 1,500 miles apart.

BIG INCREASE PREDICTED IN TRADE

Year 1924 Will Be Big One In Business, Is Claim of Leaders

CHICAGO, Dec. 22.—All lines of business and industry will participate in a broad forward movement during 1924, leaders in representative industries declared today.

The United States is in a healthy economic condition, they said, and the foundation is solid enough to warrant market expansion.

William Wrigley Jr., "chewing gum king," believes all business will show more profit next year than for 1923.

"We did more business this year than in 1922 and I firmly believe we will do more in 1924," Wrigley said. "All lines of business will do likewise. Shelves in the stores are bare. Retailers have been carrying on a hand to mouth basis. The consuming power is increasing and this means a heavier buying all along the line."

Expansion Sighted

The Wrigley products are a reasonably accurate barometer of general business, he said, and all indications are for better business.

Philip D. Block, president of the Inland Steel Co., said: "The prospects for the first half of 1924 are very convincing of good business conditions. The steel industry of the country is operating on a 75 per cent basis with increasing demand for all kinds of steel products."

"The railroads have enjoyed a large volume of traffic in 1923, which will encourage them to continue the purchase of their usual requirements of track and equipment."

Steel Stocks Low

"The general stocks of steel throughout the country are unusually low. The building program (Continued on Page 2)

EDGEMONT PARK

FIRST UNIT SOLD SECOND UNIT SOLD THIRD UNIT TWO-THIRDS SOLD

WHY? Because Edgemont Park Is An IDEAL Home Community and Because It Offers a Wonderful Opportunity for Sure Quick Results!

Scores of homes are built and under construction—hundreds have been able, at last, to own their own homes. You have the same opportunity—But you will have to hurry! Unit No. 3 will soon be gone.

Your Own Home for Only \$125 Down \$75 Down on the Lot \$50 Down on the Lumber

We have built a model home at Edgemont Park—our lumber yard will furnish you the rough lumber for one like it for only \$50 down! Think of it—\$75 down on your lot—\$50 down on your lumber! This is a REAL opportunity to OWN your home and take a good PROFIT while you enjoy it!

After you have made substantial payments on your lot we will finance the building of your fine, new home. Do you know of a surer, easier way of getting YOUR OWN HOME?

When you come to Edgemont Park and see the scores of homes going up, and when you realize that no other property in the fertile, healthful San Fernando Valley is selling so rapidly as Edgemont Park, then you will KNOW that Edgemont Park is far underpriced—that they offer YOU an opportunity for a good profit—quick! Here you can ride the swell of rapidly advancing prices, as Burbank crowds in on the east, as Lankershim pushes toward us on the west and Los Angeles, in her giant strides, sweeps up from the south, soon to envelop and pass far beyond Edgemont Park.

Fine New School Right on West Side of Tract—Lots, 45x135 and 50x150, as low as \$975

A FEW AT \$550.00

Prices include water, gas, electricity, sidewalks and graded streets to every lot. From Glendale drive out San Fernando Road to Olive Ave., in Burbank—then left to tract office. Tract Office Open Every Day. Phone Burbank 169-J

203 W. BROADWAY
GLENDALE

HAMLIN & HEPBURN

TELEPHONE
Glen. 996-J

"They're Coming Home for Xmas"

Quick Service Quality

Some day, if not now, your children may be "coming home for Christmas." Let us help you make that homecoming, and every homecoming, a most enjoyable one.

Plan your home now and build this spring. By using our plan service and our building materials you will be assured of a satisfactory home.

With lumber we sell mill-work, sash and doors and other dependable materials, all products of manufacturers well known for unquestioned superiority of their goods.

Our prices are lowest for good quality, and materials are the highest quality at any price. You are assured of full home-building value when you buy from us.

Merry Christmas!!

When You Build Insist on Having

BENTLEY'S BETTER Finish BETTER Hardwood Floors BETTER Roofs

Free Plans and Building Information in Our Up-to-date Service Department

Bentley Lumber Co.
460 West Los Feliz Road
Glendale, Calif.

Public Policy Study Of Real Estate Body

Undertaking by the organized realtors of the United States of what is in fact not a program of merely professional activities for the coming year, but a program so related to fundamental matters of public policy and to basic business conditions that it becomes industrial statesmanship, will be the subject of the midwinter meeting of the National Association of Real Estate Boards to be held at Augusta, Ga., January 17, 18 and 19.

Formulation of public policies on the great questions affecting the interests of real estate and the ownership of property will be the heart of the conference work. A vast program of activities for the advancement of real estate as a business through the work of the association and its specialized divisions and through the co-operation of its local member boards, already under way by the board of directors, will come up for adoption.

The program, going into every phase of real estate dealing as an activity closely related to the growth of cities, the development of property values, the spread of home ownership, and the safety of investment, is held to be one of the most comprehensive plans for advancement ever presented to a national business body.

A feature of the inventory of significance in the realtor fight for the maintenance of high business standards will be the accomplishments of the several boards in the enforcement of the code of business ethics to which each constituent board of the national association has subscribed.

The complete index of realtor organization everywhere which the investor should have available to every board of the experience and practice of every other board with the national association as a clearing house.

State Laws Are Aid To Home Purchasers

(Continued from page 1)

and licensed real estate salesmen number 42,212 in the twelve states where data are obtainable. Complainants Adjudged. Complainants filed before real estate commissioners numbered 10,000 in the twelve states where records of this matter were kept. All these were investigated and adjusted under supervision of a disinterested representative of the state.

Settlements effected through real estate commissions in nine states keeping such records, have resulted in refunds of over \$300,000. In addition California, which keeps no actual totals, reports that several hundred thousand dollars have been refunded, and states keeping no records would probably show similar average amounts.

Real estate license laws without exception, have been self-sustaining. In addition, in seven states, they have turned into the general state treasury, funds totaling \$62,000. However, in some states commissioners have found themselves seriously handicapped by being limited to a definite amount of expenditures, instead of being allowed to operate their department on its own returns.

Lack Funds. When there has been criticism of the law, it has arisen from the fact that commissioners were unable to administer it properly because of lack of funds.

Real estate commissioners in twelve states report that the people of the state as a whole, are interested in the law and its enforcement. In every instance reliable real estate dealers report that the business has received wider recognition as a result of the passage of the law.

Fifteen states and one Canadian province have so far set up machinery designed to put license safeguards on real estate dealing. The sixteenth state, Oklahoma, has a license law to become effective January 1. The Florida law has been in operation only since September 30, and results in that state have not been included in the general summaries.

Indiana, Kansas, Texas and Alabama are among the states where active movement among real estate men is now being organized to secure the passage of real estate license laws.

Realty Boards Favor Mellon Tax Policies

The proposal to the present congress for downward revision of income taxes and stopping of the issuance of tax-exempt securities made by Andrew W. Mellon, secretary of the treasury, has been emphatically endorsed by the National Association of Real Estate Boards as a plan, not of partisan interest, but of promotion of increased general prosperity.

Reduction of federal taxes will greatly help toward reducing high prices of property and of rents, and will promote better living conditions, resolutions just adopted by the association's board of directors point out.

The revision, which the secretary of the treasury has shown can be carried out, would, if adopted, afford a measure of relief from the burdensome taxes under which the business interests of the country are struggling at the present time, the association holds, and would be helping to free business and industry of vexatious interferences, encourage in all lines a more healthy development of productive enterprise.

A communication of the committee on ways and means of the House of Representatives will be sent out by the association urging that the recommendations of the secretary of the treasury in the formulation of revenue measures be carried out by the present congress.

Circuits of 33,000 volts will transmit the human body beyond recognition within a fraction of a second.

ADD THREE UNITS TO BANK MERGER

Porterville Institution and Branches Included In Financial Group

Three new units will join the First National-Pacific-Southwest banking group at the close of business on December 31. These are the Pioneer bank of Porterville, with branches at Exeter and Strathmore. Through the method of decentralized control these banks will remain independent units, with the same officers, directors, stockholders and employees. After the merger they will be known as the Porterville branch, the Exeter branch and the Strathmore branch of the Pacific-Southwest Trust and Savings bank, and will open as such on January 2.

The transactions do not entail an outright purchase of stock. The stockholders of the Pioneer bank, through an exchange of shares in the First National bank of Los Angeles, the Pacific-Southwest Trust and Savings bank and the First Securities company, became co-partners in the entire business of the First National-Pacific-Southwest group. Through the merger agreement there will be continued local control. The benefit to the communities represented by the merging bank and branches will be felt through the added capital placed at their disposal.

Immense Assets. Under the statement of condition of September 14, 1923, the aggregate resources of the First National bank of Los Angeles, the Pacific-Southwest Trust and Savings bank and the First Securities company were in excess of \$247,000,000. Under the same call for statements the Pioneer bank and Porterville with its branches in Exeter and Strathmore showed resources of \$1,342,891.

The officers of the new branches will be: Porterville branch—P. Gavert, manager; E. E. Ridgway, cashier; J. F. Gibson, assistant cashier and C. D. Ege, assistant cashier. Exeter branch—Roy K. Dowell, manager, and Allen Davis, assistant manager. Strathmore branch—J. M. Ridgway, manager, and Miss Alys Furnas, assistant manager.

All of the three new branches will be under the general supervision of Chester Dowell, Lindsay, vice-president and manager, who is the president of the Pioneer bank.

The executive board of the Porterville branch will consist of the following: R. D. Adams, Chester Dowell, W. A. Dowell, P. Gavert, King C. Gillette, Wm. H. Nelson and E. E. Ridgway.

Sault Ste. Marie, the canal in northern Michigan, passes three times as many boats yearly as the Suez canal.

Owners of big league baseball teams spend about \$500,000 a season to operate.

Tax Question Holds Realtors' Attention

Phases of the tax question in which the National Association of Real Estate Boards and its constituent boards, are interested, and which will be a major topic of discussion at the Augusta, Ga., meeting on January 17, 18 and 19 include: Federal tax reduction, adjustment of income taxation, the abolition of tax-exempt securities, checking the mounting tide of local tax levies, review of all local and state bond issues and tax levies by a state board of tax commissioners, as has been found to save millions in taxes in Indiana, and the equalization of tax incidence through the revision of antiquated or inadequate assessment methods.

The program of undertakings to which the association has already in great measure committed itself, embraces the gathering of real estate facts of direct application to investment, the study of the financing problem for facilitating real estate investment, the upholding of a high standard of responsibility and service in real estate transactions, the accumulation of real estate experience into a form that can be transmitted as technical real estate education, the encouragement of home ownership, the study of wise utilization of industrial tracts of cities, the study of far-seeing city planning and helpful zoning to conserve real estate values and the protection of the general public through state licensing laws.

Emphasis on the enforcement of the standards of business practice and responsibility expressed by the national association's code of ethics will mark the coming year. President-elect Ennis has indicated. For the upholding of the standards which the term "realtor" implies, it is absolutely necessary for every one of the 495 boards making up the association, to set up machinery for the enforcement of those standards, Mr. Ennis points out.

Hoover Ranch Model Show-Place of Valley

(Continued from page 1)

a miniature garden cared for by an elderly Englishman, whose work attracted Secretary Hoover's notice at Kensington Gardens, England. And this show-place of the San Joaquin valley six years ago, was little more than barren ground, the writer having advertised many a rabbit drive for the Shafter section while writing for a Bakersfield paper.

Now you might hunt a whole day to find a jack rabbit on the Hoover ranch.

RUSH TO CALIFORNIA. With the California Limited, of the Santa Fe, running in three sections in order to handle the big year-end rush to California, and reservations made for January that break all travel records to the coast, James B. Duffy, general passenger agent, officially declared the winter tourist rush to be on. All other trains of the Santa Fe lines are crowded also.

LANDON HEIGHTS

Units No. 1 and No. 2
Formerly Advertised As Grande Vista Units
No. 2 and No. 3
If you love the charm and restfulness of the hills and the higher altitudes, come to LANDON HEIGHTS, UNITS 1 and 2, fronting on Ramsdell Avenue in

Beautiful La Crescenta
where development is rapidly taking place and property values are on the increase.

100 LOTS

Now Offered for Reservation
PRE-OPENING PRICES ONLY
\$700 and Up

\$50 and \$100 Down—Balance \$15 per Month
These Lots Have a Generous Frontage of 60 Feet—

—are all beautifully level—have a magnificent panoramic view of the Crescenta and Canada valleys, overlooking Los Angeles, and even to the ocean—are covered with growing grape vines—are within a short distance of the Glendale-Montrose car line and the business part of La Crescenta.

Improvements To Be Installed
REASONABLE RESTRICTIONS
How to go there—Drive north on Verdugo Road to Los Angeles street in Montrose, then turn to left at School House and continue to tract office.

H. N. Landon

213 West Broadway Phone Glendale 1179
Our auto is at your service
Call at our office or phone

NEWS CLASSIFIED ADS FOR BEST RESULTS

Augusta Convention Plans Are Outlined

(Continued from page 1)

Call to the national committees, and invitation to presidents of all member boards to take part in the conference and to take up in each local board previous to the conference the important matters that will there come up for decision, have just been sent out from association headquarters, Chicago. A meeting of the board of directors, including both the present and the incoming members, of outgoing and incoming officers of the association, of outgoing and incoming division chairmen, and of outgoing and incoming committee chairmen, will be held at Augusta, January 16, preceding the conference.

Inaugurate Officers. Formal inauguration of incoming officers will be a feature of the midwinter gathering.

Entertainment plans already made by the Augusta realtors for the visiting real estate men and their families include an old-time Augusta barbeque, an inaugural dinner and ball, and a golf tournament. Wives of members of the Augusta Real Estate Board will entertain visiting women.

TRADE INCREASES, 1924 PREDICTION

Business Executives All Over Country Foresee Huge Business Advance

(Continued from page 1)

gram for the new year is promising. Labor is well employed. The farms have produced normal crops. The purchasing power of the country is sound and money working easier. All these conditions point to healthy and active business for next year.

Louis F. Swift, president of Swift & Co., packers, said: "The stability of American business during 1923 in the face of disorganized conditions in Europe, has been a matter of wonderment to the world at large. It has emphasized more thoroughly than perhaps ever before the tremendous natural advantages of our country and the resourcefulness of American business ability."

"As a nation we find ourselves with no accumulation of surplus stocks, except in a few industries, and with very little unemployment.

"This situation, in view of the experiences of the last year, is encouraging and warrants confidence in the prospects for the future."

Gain In Crops. O. E. Bradford, president of the American Farm Bureau Federation said that the cash income received by farmers in the crop year ending June 30, 1924, promises to be \$500,000,000 more than the preceding year and almost \$2,000,000,000 more than during the low of 1921-1922. The increase means actual cash income he said. "It is too early to make any safe prediction for the crop year ending June 30, 1925, but farmers are proceeding with caution in planning their program. They will grow less wheat which is giving them least profitable returns. Livestock and dairy products should continue to bring in as much cash as this year. Cotton

Real Estate Boards Aid In City Growth

The part that realtors in local real estate boards are having in the working out of problems of city growth and in the development of modern business organization will be shown in an inventory of constituent board activities now being made by the National Association of Real Estate Boards. The inventory will take stock of the work accomplished in the year just closing by member boards of the association in 495 cities of the United States and Canada.

Taxation reform, city planning and zoning, and the housing situation, are matters in which real estate boards everywhere have taken a leading part. A survey of what is being done in each of the 495 cities in the attack on the taxation problem, will be an important feature of the board reports. Parallel with this information, the association is collecting from each city a statement of the percentage of tax increase which that city has experienced in the decade 1913-1923.

Service of real estate boards everywhere in the making of official appraisals of property value, will be totaled for the year from the report. Appraisals include those made for the federal government under a plan whereby the government calls on the association, through its constituent boards, to appraise properties which it is about to buy or sell or lease.

Rental surveys, as they have been made to help in the solution of the housing problem in individual localities, and vacant house surveys will be listed among the board achievements and board services.

probably cannot hold its present high record."

While bankers are in the midst of preparing their annual statements and refused to be quoted, they indicated their belief that 1924 will be a more profitable year. The head of one of the country's greatest mail order houses frankly confessed he was "not a good prophet" but said he saw no reason why industry in general should not march onward during the new year.

FOR SALE
—200 acres on Magnolia, Pioneer and Victory Boulevards in Burbank—the fastest growing city in America, except Glendale—a great buy for subdividing. James C. Tobias, 210 E. Palmer Avenue, Glendale.

Oakmont Country Club
MONTECITO PARK
SPARR HEIGHTS

Sparr Heights is a beautiful residential tract overlooking the city of Los Angeles. It is the finest and most desirable real estate in the Los Angeles area.

WILSON ELECTED POST COMMANDER

Heads Local Legionnaires For Ensuing Year; Other Officers Chosen

Joseph Wilson, 220 West Chestnut street, was last night elected Post Commander of American Legion post No. 127, for the year of 1924...

LEGION SELECTS FIRST ADJUTANT

E. E. McWain, Who Will Fill Paid Office, Is From South Pasadena

Commander Chalmers D. Day announced last night's meeting of the American Legion that after several weeks of consideration, E. E. McWain had been selected as the first paid adjutant of the Glendale post.

Lecture Before Art Club Is Postponed

The Glendale Art club met last night in the juvenile room of the public library, but owing to the absence of a number of members the anticipated lecture by John W. Cotton on American Artists was postponed until the meeting to be held in January.

Zion Church to Give Program on Xmas Eve

A Christmas program will be presented Monday night, December 24, at the Zion Lutheran church, corner of Isabel and East California streets, by the Sunday school and members of the Young People's society of the church.

Organist Arranges Program for Sunday

An especially attractive program has been arranged by the new organist-director of the Glendale Presbyterian church, Otto T. Hirschler, Mus. B., of Los Angeles...

Tennis Club Members In Christmas Party

The Foothill Tennis club entertained with a Christmas party in the Epworth League room of the Casa Verdugo church, fifteen adult guests were present and fifty members of the club.

Will Give Pageant In Casa Verdugo Church

A Christmas entertainment will be given tonight at the Casa Verdugo Methodist church by the Sunday school. The program will consist of music, readings, and a pageant in costume.

Thanks Friends For Aid In Competition

Mrs. Violet D. George, winner of the first prize of a \$2500 building lot in Sparr Heights in The Glendale Evening News subscription campaign that closed on Thursday night, wishes to thank her friends in Glendale who aided her in her work and whose support placed her in the lead.

NAB BANK BANDIT

LOS ANGELES, Dec. 22.—Edward Aasen, alleged Los Angeles bank bandit, for whom the entire Pacific coast has been searching for two months, has been captured at Mount Vernon, Wash., and has confessed, according to a telegram received by Sheriff Fraeger.

Death rate of babies under 1 year of age is the same as that of people over 75 years old.

Santa Claus Wants the Children To Meet Him. He Has A SAVINGS BANK For Them Every night till Xmas at Jesse E. Smith Co.

CHRISTMAS SPECIALS AT THE NEW ENGLAND FURNITURE CO. FLOOR LAMPS, SMOKING STANDS, SEWING CABINETS, CARD TABLES, CEDAR CHESTS. OPEN AN ACCOUNT. The New England Furniture Company 231 SOUTH BRAND BLVD.

RESOLUTION OF THE COUNCIL OF THE CITY OF GLENDALE... AN ORDINANCE EXTENDING THE TIME FOR THE FILING OF AN ACTION TO CONDEMNATE THE LAND NECESSARY FOR THE OPENING AND LAYING OUT OF PARK AVENUE IN THE CITY OF GLENDALE.