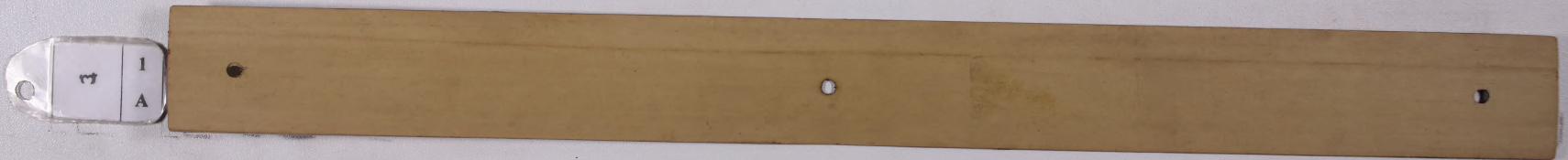


BABAD BRAHMANA CATUR

*Pusat Dokumentasi
Dinas Kebudayaan Provinsi Bali*



BABAD BRAHMANA CATUR

Pusat Dokumentasi

Dinas Kebudayaan Provinsi Bali

1
B

Handwritten Balinese script on the left side of the top palm leaf manuscript.

Handwritten Balinese script on the right side of the top palm leaf manuscript.

2
A

Handwritten Balinese script on the left side of the bottom palm leaf manuscript.

Handwritten Balinese script on the right side of the bottom palm leaf manuscript.

BABAD BRAHMANA CATUR

Pusat Dokumentasi

Dinas Kebudayaan Provinsi Bali

2
B

Handwritten text in Balinese script on a palm leaf, consisting of two columns of text.

3
A

Handwritten text in Balinese script on a palm leaf, consisting of two columns of text.

BABAD BRAHMANA CATUR

Pusat Dokumentasi
Dinas Kebudayaan Provinsi Bali

3
B

3
3

3
3

4
A

4
4

4
4

BABAD BRAHMANA CATUR
*Pusat Dokumentasi
Dinas Kebudayaan Provinsi Bali*

6
B

ပထမၤၤမၤသွက်ၤအတၢ်ထီၣ်အတၢ်ထီၣ်အတၢ်ထီၣ်အတၢ်ထီၣ်အတၢ်ထီၣ်
ထီၣ်အတၢ်ထီၣ်အတၢ်ထီၣ်အတၢ်ထီၣ်အတၢ်ထီၣ်အတၢ်ထီၣ်
အတၢ်ထီၣ်အတၢ်ထီၣ်အတၢ်ထီၣ်အတၢ်ထီၣ်အတၢ်ထီၣ်
အတၢ်ထီၣ်အတၢ်ထီၣ်အတၢ်ထီၣ်အတၢ်ထီၣ်အတၢ်ထီၣ်

ထီၣ်အတၢ်ထီၣ်အတၢ်ထီၣ်အတၢ်ထီၣ်အတၢ်ထီၣ်အတၢ်ထီၣ်
အတၢ်ထီၣ်အတၢ်ထီၣ်အတၢ်ထီၣ်အတၢ်ထီၣ်အတၢ်ထီၣ်
အတၢ်ထီၣ်အတၢ်ထီၣ်အတၢ်ထီၣ်အတၢ်ထီၣ်အတၢ်ထီၣ်
အတၢ်ထီၣ်အတၢ်ထီၣ်အတၢ်ထီၣ်အတၢ်ထီၣ်အတၢ်ထီၣ်

7
A

ထီၣ်အတၢ်ထီၣ်အတၢ်ထီၣ်အတၢ်ထီၣ်အတၢ်ထီၣ်အတၢ်ထီၣ်
အတၢ်ထီၣ်အတၢ်ထီၣ်အတၢ်ထီၣ်အတၢ်ထီၣ်အတၢ်ထီၣ်
အတၢ်ထီၣ်အတၢ်ထီၣ်အတၢ်ထီၣ်အတၢ်ထီၣ်အတၢ်ထီၣ်
အတၢ်ထီၣ်အတၢ်ထီၣ်အတၢ်ထီၣ်အတၢ်ထီၣ်အတၢ်ထီၣ်

ထီၣ်အတၢ်ထီၣ်အတၢ်ထီၣ်အတၢ်ထီၣ်အတၢ်ထီၣ်အတၢ်ထီၣ်
အတၢ်ထီၣ်အတၢ်ထီၣ်အတၢ်ထီၣ်အတၢ်ထီၣ်အတၢ်ထီၣ်
အတၢ်ထီၣ်အတၢ်ထီၣ်အတၢ်ထီၣ်အတၢ်ထီၣ်အတၢ်ထီၣ်
အတၢ်ထီၣ်အတၢ်ထီၣ်အတၢ်ထီၣ်အတၢ်ထီၣ်အတၢ်ထီၣ်

BABAD BRAHMANA CATUR
 Pusat Dokumentasi
 Dinas Kebudayaan Provinsi Bali

ꦮ	7
	B

...
 ...
 ...
 ...
 ...
 ...
 ...
 ...

ꦮ	8
	A

...
 ...
 ...
 ...
 ...
 ...
 ...
 ...

BABAD BRAHMANA CATUR

Pusat Dokumentasi

Dinas Kebudayaan Provinsi Bali

၁	8
	B

၁။ ဂရုတစိုက်စွာ နေထိုင်ရန် အရေးကြီးသည်။ ဤကဏ္ဍတွင် ဂရုတစိုက်စွာ နေထိုင်ရန် အရေးကြီးသည်ကို ဖော်ပြထားသည်။ ဂရုတစိုက်စွာ နေထိုင်ရန် အရေးကြီးသည်ကို ဖော်ပြထားသည်။ ဂရုတစိုက်စွာ နေထိုင်ရန် အရေးကြီးသည်ကို ဖော်ပြထားသည်။

၂။ ဂရုတစိုက်စွာ နေထိုင်ရန် အရေးကြီးသည်။ ဤကဏ္ဍတွင် ဂရုတစိုက်စွာ နေထိုင်ရန် အရေးကြီးသည်ကို ဖော်ပြထားသည်။ ဂရုတစိုက်စွာ နေထိုင်ရန် အရေးကြီးသည်ကို ဖော်ပြထားသည်။ ဂရုတစိုက်စွာ နေထိုင်ရန် အရေးကြီးသည်ကို ဖော်ပြထားသည်။

၁	9
	A

၃။ ဂရုတစိုက်စွာ နေထိုင်ရန် အရေးကြီးသည်။ ဤကဏ္ဍတွင် ဂရုတစိုက်စွာ နေထိုင်ရန် အရေးကြီးသည်ကို ဖော်ပြထားသည်။ ဂရုတစိုက်စွာ နေထိုင်ရန် အရေးကြီးသည်ကို ဖော်ပြထားသည်။ ဂရုတစိုက်စွာ နေထိုင်ရန် အရေးကြီးသည်ကို ဖော်ပြထားသည်။

၄။ ဂရုတစိုက်စွာ နေထိုင်ရန် အရေးကြီးသည်။ ဤကဏ္ဍတွင် ဂရုတစိုက်စွာ နေထိုင်ရန် အရေးကြီးသည်ကို ဖော်ပြထားသည်။ ဂရုတစိုက်စွာ နေထိုင်ရန် အရေးကြီးသည်ကို ဖော်ပြထားသည်။ ဂရုတစိုက်စွာ နေထိုင်ရန် အရေးကြီးသည်ကို ဖော်ပြထားသည်။

BABAD BRAHMANA CATUR

Pusat Dokumentasi

Dinas Kebudayaan Provinsi Bali

12
B

12
B

...
...
...
...
...
...

...
...
...
...
...
...

13
B

13
B

...
...
...
...
...
...

...
...
...
...
...
...

BABAD BRAHMANA CATUR

Pusat Dokumentasi

Dinas Kebudayaan Provinsi Bali

14
B

...
...
...

...
...
...

15
A

...
...
...

...
...
...

BABAD BRAHMANA CATUR

Pusat Dokumentasi

Dinas Kebudayaan Provinsi Bali

15
B

Handwritten text in Balinese script on a palm leaf, consisting of two columns of text.

16
A

Handwritten text in Balinese script on a palm leaf, consisting of two columns of text.

BABAD BRAHMANA CATUR

Pusat Dokumentasi
Dinas Kebudayaan Provinsi Bali

16 B

1. ...
 2. ...
 3. ...

17 A

1. ...
 2. ...
 3. ...

BABAD BRAHMANA CATUR

Pusat Dokumentasi

Dinas Kebudayaan Provinsi Bali

17
B

Handwritten Balinese script on a palm leaf manuscript strip, divided into two columns. The text is written in a traditional script with some characters in red ink.

18
A

Handwritten Balinese script on a palm leaf manuscript strip, divided into two columns. The text is written in a traditional script with some characters in red ink.

BABAD BRAHMANA CATUR

Pusat Dokumentasi

Dinas Kebudayaan Provinsi Bali

18
B

Handwritten text in Balinese script on a palm leaf manuscript strip, divided into two columns. The text is written in a traditional style with dark ink on the natural brown color of the leaf.

19
A

Handwritten text in Balinese script on a palm leaf manuscript strip, divided into two columns. The text is written in a traditional style with dark ink on the natural brown color of the leaf.

BABAD BRAHMANA CATUR

Pusat Dokumentasi

Dinas Kebudayaan Provinsi Bali

19
B

Handwritten Balinese script on the left side of palm leaf 19.

Handwritten Balinese script on the right side of palm leaf 19.

20
A

Handwritten Balinese script on the left side of palm leaf 20.

Handwritten Balinese script on the right side of palm leaf 20.

BABAD BRAHMANA CATUR

Pusat Dokumentasi

Dinas Kebudayaan Provinsi Bali

20
B

Handwritten Balinese script on the left side of palm leaf 20.

Handwritten Balinese script on the right side of palm leaf 20.

21
A

Handwritten Balinese script on the left side of palm leaf 21.

Handwritten Balinese script on the right side of palm leaf 21.

BABAD BRAHMANA CATUR

Pusat Dokumentasi

Dinas Kebudayaan Provinsi Bali

၁၅

21

B

၁၅

တစ်ဦးတည်းကတည်းကပင်၊ နေရာတစ်နေရာတည်းက
တစ်ဦးတည်းကတည်းကပင်၊ နေရာတစ်နေရာတည်းက
တစ်ဦးတည်းကတည်းကပင်၊ နေရာတစ်နေရာတည်းက
တစ်ဦးတည်းကတည်းကပင်၊ နေရာတစ်နေရာတည်းက
တစ်ဦးတည်းကတည်းကပင်၊ နေရာတစ်နေရာတည်းက

မရှိမိရာ တစ်ဦးတည်းကတည်းကပင်၊ နေရာတစ်နေရာတည်းက
တစ်ဦးတည်းကတည်းကပင်၊ နေရာတစ်နေရာတည်းက
တစ်ဦးတည်းကတည်းကပင်၊ နေရာတစ်နေရာတည်းက
တစ်ဦးတည်းကတည်းကပင်၊ နေရာတစ်နေရာတည်းက
တစ်ဦးတည်းကတည်းကပင်၊ နေရာတစ်နေရာတည်းက

၁၆

22

A

မူကွဲပြားစွာ၊ နေရာတစ်နေရာတည်းကပင်၊ နေရာတစ်နေရာတည်းက
တစ်ဦးတည်းကတည်းကပင်၊ နေရာတစ်နေရာတည်းက
တစ်ဦးတည်းကတည်းကပင်၊ နေရာတစ်နေရာတည်းက
တစ်ဦးတည်းကတည်းကပင်၊ နေရာတစ်နေရာတည်းက
တစ်ဦးတည်းကတည်းကပင်၊ နေရာတစ်နေရာတည်းက

ပုဂ္ဂိုလ်တို့၊ နေရာတစ်နေရာတည်းကပင်၊ နေရာတစ်နေရာတည်းက
တစ်ဦးတည်းကတည်းကပင်၊ နေရာတစ်နေရာတည်းက
တစ်ဦးတည်းကတည်းကပင်၊ နေရာတစ်နေရာတည်းက
တစ်ဦးတည်းကတည်းကပင်၊ နေရာတစ်နေရာတည်းက
တစ်ဦးတည်းကတည်းကပင်၊ နေရာတစ်နေရာတည်းက

BABAD BRAHMANA CATUR

Pusat Dokumentasi

Dinas Kebudayaan Provinsi Bali

27
B

Handwritten text in Balinese script on a palm leaf, consisting of two columns of text.

28
A

Handwritten text in Balinese script on a palm leaf, consisting of two columns of text.

BABAD BRAHMANA CATUR

Pusat Dokumentasi

Dinas Kebudayaan Provinsi Bali

30
B

...
...
...
...
...

...
...
...
...
...

31
A

...
...
...
...
...

...
...
...
...
...

BABAD BRAHMANA CATUR

Pusat Dokumentasi

Dinas Kebudayaan Provinsi Bali

31
B

Handwritten Balinese script on a palm leaf manuscript strip, consisting of two columns of text.

32
A

Handwritten Balinese script on a palm leaf manuscript strip, consisting of two columns of text.

BABAD BRAHMANA CATUR

Pusat Dokumentasi

Dinas Kebudayaan Provinsi Bali

37	B

Handwritten text in Balinese script on a palm leaf. The text is arranged in two columns, with the left column starting with a small symbol that appears to be '27'. The script is finely etched into the surface of the leaf.

38	A

Handwritten text in Balinese script on a palm leaf. The text is arranged in two columns. The script is finely etched into the surface of the leaf.

BABAD BRAHMANA CATUR

Pusat Dokumentasi

Dinas Kebudayaan Provinsi Bali

41
B

37
38
39
40
41
42
43
44
45
46
47
48
49
50
51
52
53
54
55
56
57
58
59
60
61
62
63
64
65
66
67
68
69
70
71
72
73
74
75
76
77
78
79
80
81
82
83
84
85
86
87
88
89
90
91
92
93
94
95
96
97
98
99
100

101
102
103
104
105
106
107
108
109
110
111
112
113
114
115
116
117
118
119
120
121
122
123
124
125
126
127
128
129
130
131
132
133
134
135
136
137
138
139
140
141
142
143
144
145
146
147
148
149
150
151
152
153
154
155
156
157
158
159
160
161
162
163
164
165
166
167
168
169
170
171
172
173
174
175
176
177
178
179
180
181
182
183
184
185
186
187
188
189
190
191
192
193
194
195
196
197
198
199
200

42
A

201
202
203
204
205
206
207
208
209
210
211
212
213
214
215
216
217
218
219
220
221
222
223
224
225
226
227
228
229
230
231
232
233
234
235
236
237
238
239
240
241
242
243
244
245
246
247
248
249
250
251
252
253
254
255
256
257
258
259
260
261
262
263
264
265
266
267
268
269
270
271
272
273
274
275
276
277
278
279
280
281
282
283
284
285
286
287
288
289
290
291
292
293
294
295
296
297
298
299
300

301
302
303
304
305
306
307
308
309
310
311
312
313
314
315
316
317
318
319
320
321
322
323
324
325
326
327
328
329
330
331
332
333
334
335
336
337
338
339
340
341
342
343
344
345
346
347
348
349
350
351
352
353
354
355
356
357
358
359
360
361
362
363
364
365
366
367
368
369
370
371
372
373
374
375
376
377
378
379
380
381
382
383
384
385
386
387
388
389
390
391
392
393
394
395
396
397
398
399
400

BABAD BRAHMANA CATUR

Pusat Dokumentasi

Dinas Kebudayaan Provinsi Bali

42
B

Handwritten Balinese script on the left side of palm leaf 42.

Handwritten Balinese script on the right side of palm leaf 42.

43
A

Handwritten Balinese script on the left side of palm leaf 43.

Handwritten Balinese script on the right side of palm leaf 43.

BABAD BRAHMANA CATUR

Pusat Dokumentasi

Dinas Kebudayaan Provinsi Bali

88 44
B

Handwritten Balinese script on a palm leaf manuscript strip, divided into two columns. The text is written in a traditional style with dark ink on the natural brown color of the leaf. There are two circular holes on the strip, one on each side, used for binding multiple leaves together.

89 45
A

Handwritten Balinese script on a palm leaf manuscript strip, divided into two columns. The text is written in a traditional style with dark ink on the natural brown color of the leaf. There are two circular holes on the strip, one on each side, used for binding multiple leaves together.

BABAD BRAHMANA CATUR

Pusat Dokumentasi

Dinas Kebudayaan Provinsi Bali

49
B

Handwritten Balinese script on the left side of palm leaf 49.

Handwritten Balinese script on the right side of palm leaf 49.

50
A

Handwritten Balinese script on the left side of palm leaf 50.

Handwritten Balinese script on the right side of palm leaf 50.

BABAD BRAHMANA CATUR

Pusat Dokumentasi

Dinas Kebudayaan Provinsi Bali

50
B
90

Handwritten Balinese script on a palm leaf manuscript strip, consisting of two columns of text.

51
A
91

Handwritten Balinese script on a palm leaf manuscript strip, consisting of two columns of text.

BABAD BRAHMANA CATUR

Pusat Dokumentasi

Dinas Kebudayaan Provinsi Bali

51
B

Handwritten text in Balinese script on a palm leaf, consisting of two columns of text.

52
A

Handwritten text in Balinese script on a palm leaf, consisting of two columns of text.

BABAD BRAHMANA CATUR

Pusat Dokumentasi

Dinas Kebudayaan Provinsi Bali

52
B

Handwritten text in Balinese script on a palm leaf manuscript strip, divided into two columns. The text is written in a traditional style with dark ink on the natural brown color of the leaf.

53
A

Handwritten text in Balinese script on a palm leaf manuscript strip, divided into two columns. The text is written in a traditional style with dark ink on the natural brown color of the leaf.

BABAD BRAHMANA CATUR

Pusat Dokumentasi

Dinas Kebudayaan Provinsi Bali

54
B

Handwritten text in Balinese script on a palm leaf, divided into two columns. The left column begins with a small number '၅၆' (56) in the margin. The script is densely packed and covers most of the leaf's surface.

55
A

Handwritten text in Balinese script on a palm leaf, divided into two columns. The left column begins with a small number '၅၅' (55) in the margin. The script is densely packed and covers most of the leaf's surface.

BABAD BRAHMANA CATUR

Pusat Dokumentasi

Dinas Kebudayaan Provinsi Bali

55	55
99	B

Handwritten text in Balinese script on a palm leaf manuscript, divided into two columns by a central hole. The text is written in a traditional style.

56	56
96	A

Handwritten text in Balinese script on a palm leaf manuscript, divided into two columns by a central hole. The text is written in a traditional style.

BABAD BRAHMANA CATUR

Pusat Dokumentasi

Dinas Kebudayaan Provinsi Bali

56
B

Handwritten Balinese script on the left side of the top palm leaf manuscript.

Handwritten Balinese script on the right side of the top palm leaf manuscript.

57
A

Handwritten Balinese script on the left side of the bottom palm leaf manuscript.

Handwritten Balinese script on the right side of the bottom palm leaf manuscript.

BABAD BRAHMANA CATUR

Pusat Dokumentasi

Dinas Kebudayaan Provinsi Bali

57

57

B

Handwritten Balinese script on the left side of palm leaf 57.

Handwritten Balinese script on the right side of palm leaf 57.

58

58

A

Handwritten Balinese script on the left side of palm leaf 58.

Handwritten Balinese script on the right side of palm leaf 58.

BABAD BRAHMANA CATUR

Pusat Dokumentasi

Dinas Kebudayaan Provinsi Bali

95

58

B

95

Handwritten Balinese script on the left side of the palm leaf manuscript fragment.

Handwritten Balinese script on the right side of the palm leaf manuscript fragment.

94

59

A

Handwritten Balinese script on the left side of the palm leaf manuscript fragment.

Handwritten Balinese script on the right side of the palm leaf manuscript fragment.

BABAD BRAHMANA CATUR

Pusat Dokumentasi

Dinas Kebudayaan Provinsi Bali

95	59
	B

Handwritten text in Balinese script on a palm leaf manuscript strip, divided into two columns by a central hole. The script is finely etched and runs horizontally across the length of the leaf.

20	60
	A

Handwritten text in Balinese script on a palm leaf manuscript strip, divided into two columns by a central hole. The script is finely etched and runs horizontally across the length of the leaf.

BABAD BRAHMANA CATUR

Pusat Dokumentasi

Dinas Kebudayaan Provinsi Bali

60

60

B

Handwritten Balinese script on the left side of the palm leaf manuscript fragment.

Handwritten Balinese script on the right side of the palm leaf manuscript fragment.

61

61

A

Handwritten Balinese script on the left side of the palm leaf manuscript fragment.

Handwritten Balinese script on the right side of the palm leaf manuscript fragment.

BABAD BRAHMANA CATUR

Pusat Dokumentasi

Dinas Kebudayaan Provinsi Bali

art

61

B

Handwritten Balinese script on the left side of palm leaf 61.

Handwritten Balinese script on the right side of palm leaf 61.

62

A

Handwritten Balinese script on the left side of palm leaf 62.

Handwritten Balinese script on the right side of palm leaf 62.

BABAD BRAHMANA CATUR

Pusat Dokumentasi

Dinas Kebudayaan Provinsi Bali

63
B

Handwritten text in Balinese script on a palm leaf. The text is arranged in two columns. The left column begins with a small symbol resembling a '3' with a dot above it. The right column begins with a small circle. The script is finely etched into the surface of the leaf.

64
A

Handwritten text in Balinese script on a palm leaf. The text is arranged in two columns. The left column begins with a small circle. The right column begins with a small circle. The script is finely etched into the surface of the leaf.

BABAD BRAHMANA CATUR

Pusat Dokumentasi

Dinas Kebudayaan Provinsi Bali

60	64
	B

Handwritten text in Balinese script on a palm leaf manuscript, divided into two columns. The text is written in a traditional style with clear characters.

61	65
	A

Handwritten text in Balinese script on a palm leaf manuscript, divided into two columns. The text is written in a traditional style with clear characters.

BABAD BRAHMANA CATUR

Pusat Dokumentasi

Dinas Kebudayaan Provinsi Bali

65

B

65

Handwritten Balinese script on a palm leaf strip, starting with a small number '65' written above the first line.

Handwritten Balinese script on a palm leaf strip, continuing the text from the first strip.

66

A

Handwritten Balinese script on a palm leaf strip, starting with a small number '66' written above the first line.

Handwritten Balinese script on a palm leaf strip, continuing the text from the first strip.

BABAD BRAHMANA CATUR

Pusat Dokumentasi

Dinas Kebudayaan Provinsi Bali

67

67

B

Handwritten text in Balinese script on a palm leaf. The text is arranged in two columns. The left column begins with "Pala...". The right column begins with "Pala...". The script is finely etched into the surface of the leaf.

68

68

A

Handwritten text in Balinese script on a palm leaf. The text is arranged in two columns. The left column begins with "Pala...". The right column begins with "Pala...". The script is finely etched into the surface of the leaf.

BABAD BRAHMANA CATUR

Pusat Dokumentasi
Dinas Kebudayaan Provinsi Bali

68

B

68

11.
... ..
... ..
... ..
... ..
... ..

... ..
... ..
... ..
... ..
... ..
... ..

69

A

69

... ..
... ..
... ..
... ..
... ..
... ..

... ..
... ..
... ..
... ..
... ..
... ..

BABAD BRAHMANA CATUR

Pusat Dokumentasi

Dinas Kebudayaan Provinsi Bali

69

69

B

Handwritten Balinese script on a palm leaf manuscript strip, divided into two columns.

70

70

A

Handwritten Balinese script on a palm leaf manuscript strip, divided into two columns.

BABAD BRAHMANA CATUR

Pusat Dokumentasi

Dinas Kebudayaan Provinsi Bali

71
B

Handwritten text in Balinese script on palm leaf 71. The text is arranged in two columns. The left column begins with a small character that appears to be 'vī'. The script is finely etched into the surface of the leaf.

72
A

Handwritten text in Balinese script on palm leaf 72. The text is arranged in two columns. The script is finely etched into the surface of the leaf.

BABAD BRAHMANA CATUR

Pusat Dokumentasi

Dinas Kebudayaan Provinsi Bali

72
B

Handwritten text in Balinese script on a palm leaf manuscript strip, divided into two columns. The text is written in a traditional style with dark ink on the light-colored leaf.

73
A

Handwritten text in Balinese script on a palm leaf manuscript strip, divided into two columns. The text is written in a traditional style with dark ink on the light-colored leaf.

BABAD BRAHMANA CATUR

Pusat Dokumentasi

Dinas Kebudayaan Provinsi Bali

၇၅

73

B

Handwritten text in Balinese script on a palm leaf manuscript strip, divided into two sections by a hole.

၇၆

74

A

Handwritten text in Balinese script on a palm leaf manuscript strip, divided into two sections by a hole.

BABAD BRAHMANA CATUR

Pusat Dokumentasi

Dinas Kebudayaan Provinsi Bali

လၢၤ

74

B

Handwritten text in Balinese script on a palm leaf manuscript strip, divided into two columns by a central hole.

လၢၤ

75

A

Handwritten text in Balinese script on a palm leaf manuscript strip, divided into two columns by a central hole.

BABAD BRAHMANA CATUR

Pusat Dokumentasi

Dinas Kebudayaan Provinsi Bali

76
B

Handwritten Balinese script on the left side of palm leaf 76.

Handwritten Balinese script on the right side of palm leaf 76.

77
A

Handwritten Balinese script on the left side of palm leaf 77.

Handwritten Balinese script on the right side of palm leaf 77.

BABAD BRAHMANA CATUR

Pusat Dokumentasi

Dinas Kebudayaan Provinsi Bali

លល

77

B

Handwritten text in Balinese script on a palm leaf manuscript strip, consisting of two columns of text.

លល

78

A

Handwritten text in Balinese script on a palm leaf manuscript strip, consisting of two columns of text.

BABAD BRAHMANA CATUR

Pusat Dokumentasi

Dinas Kebudayaan Provinsi Bali

78
A

...
...
...
...
...

...
...
...
...
...

79
A

...
...
...
...
...

...
...
...
...
...

BABAD BRAHMANA CATUR

Pusat Dokumentasi

Dinas Kebudayaan Provinsi Bali

81

B

Handwritten Balinese script on the left side of the top palm leaf manuscript fragment.

Handwritten Balinese script on the right side of the top palm leaf manuscript fragment.

82

A

Handwritten Balinese script on the left side of the bottom palm leaf manuscript fragment.

Handwritten Balinese script on the right side of the bottom palm leaf manuscript fragment.

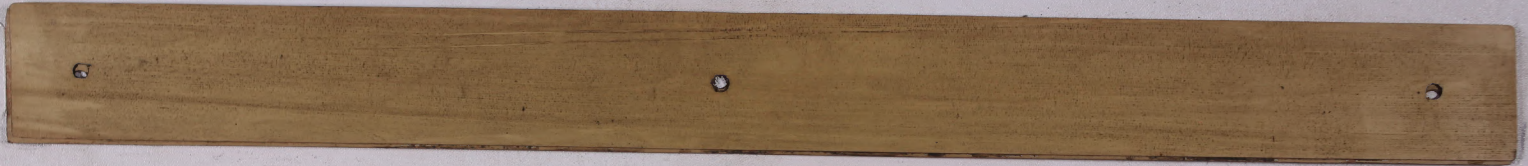
BABAD BRAHMANA CATUR

*Pusat Dokumentasi
Dinas Kebudayaan Provinsi Bali*

83

83

B



BABAD BRAHMANA CATUR

*Pusat Dokumentasi
Dinas Kebudayaan Provinsi Bali*

