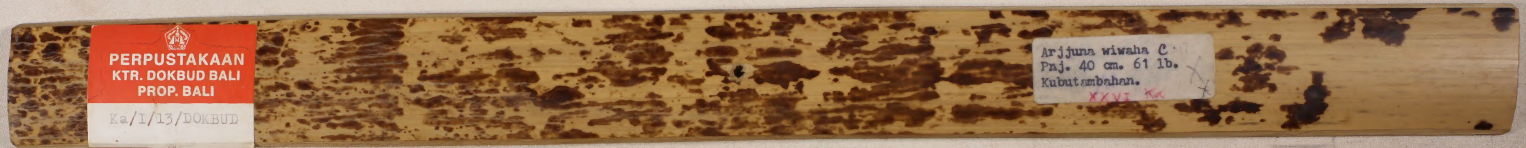


KAKAWIN ARJUNA WIWAHA 02

Pusat Dokumentasi
Dinas Kebudayaan Provinsi Bali



KAKAWIN ARJUNA WIWAHA 02

Pusat Dokumentasi
Dinas Kebudayaan Provinsi Bali

1	B
---	---

Handwritten text on a palm leaf manuscript strip, likely containing Balinese script. The text is arranged in two columns. On the left side of the strip, there is a small white label with the number '1' and the letter 'B'. The script is finely etched into the surface of the dried leaf.

2	A
---	---

Handwritten text on a palm leaf manuscript strip, likely containing Balinese script. The text is arranged in two columns. On the left side of the strip, there is a small white label with the number '2' and the letter 'A'. The script is finely etched into the surface of the dried leaf.

KAKAWIN ARJUNA WIWAHA 02

Pusat Dokumentasi
Dinas Kebudayaan Provinsi Bali

2	B	<p>Handwritten Balinese script on a palm leaf manuscript strip. The text is arranged in two columns, with a small circular hole visible on the right side of the leaf.</p>
---	---	--

3	A	<p>Handwritten Balinese script on a palm leaf manuscript strip. The text is arranged in two columns, with a small circular hole visible on the right side of the leaf.</p>
---	---	--

KAKAWIN ARJUNA WIWAHA 02
Pusat Dokumentasi
Dinas Kebudayaan Provinsi Bali

8 4
B

Handwritten Balinese script on a palm leaf manuscript strip, divided into two columns. The text is written in a traditional style with dark ink on the natural brown color of the leaf.

9 5
A

Handwritten Balinese script on a palm leaf manuscript strip, divided into two columns. The text is written in a traditional style with dark ink on the natural brown color of the leaf.

KAKAWIN ARJUNA WIWAHA 02

Pusat Dokumentasi
Dinas Kebudayaan Provinsi Bali

9	5
	B

Handwritten Balinese script on a palm leaf manuscript strip. The text is arranged in two columns. On the right side, there is a date: 100-10-0100-10001000.

6	6
	A

Handwritten Balinese script on a palm leaf manuscript strip. The text is arranged in two columns.

KAKAWIN ARJUNA WIWAHA 02
Pusat Dokumentasi
Dinas Kebudayaan Provinsi Bali

6
B

Handwritten Balinese script on a palm leaf manuscript strip.

7
A

Handwritten Balinese script on a palm leaf manuscript strip.

KAKAWIN ARJUNA WIWAHA 02

Pusat Dokumentasi
Dinas Kebudayaan Provinsi Bali

၈

7

B

Handwritten text in Balinese script on a palm leaf manuscript strip, divided into two columns by a central hole. The script is finely etched and follows the traditional layout of a Kakawin manuscript.

၉

8

A

Handwritten text in Balinese script on a palm leaf manuscript strip, divided into two columns by a central hole. The script is finely etched and follows the traditional layout of a Kakawin manuscript.

KAKAWIN ARJUNA WIWAHA 02

Pusat Dokumentasi
Dinas Kebudayaan Provinsi Bali

8
B

Handwritten Balinese script on a palm leaf manuscript strip, consisting of two columns of text.

9
A

Handwritten Balinese script on a palm leaf manuscript strip, consisting of two columns of text.

KAKAWIN ARJUNA WIWAHA 02

Pusat Dokumentasi
Dinas Kebudayaan Provinsi Bali

၁

9

B

Handwritten text in Balinese script on a palm leaf manuscript strip. The text is arranged in two columns, with a small mark on the left side. The script is finely etched into the surface of the leaf.

၁၀

10

A

Handwritten text in Balinese script on a palm leaf manuscript strip. The text is arranged in two columns, with a small mark on the left side. The script is finely etched into the surface of the leaf.

KAKAWIN ARJUNA WIWAHA 02

Pusat Dokumentasi
Dinas Kebudayaan Provinsi Bali

10

10

B

Handwritten Balinese script on a palm leaf manuscript strip, likely containing verses from the Kakawin Arjuna Wiwaha.

11

11

A

Handwritten Balinese script on a palm leaf manuscript strip, likely containing verses from the Kakawin Arjuna Wiwaha.

KAKAWIN ARJUNA WIWAHA 02
Pusat Dokumentasi
Dinas Kebudayaan Provinsi Bali

11
B

Handwritten text in Balinese script on a palm leaf manuscript strip. The text is arranged in two columns. The right column begins with a date: "T. 1000000 -- 0000000".

12
A

Handwritten text in Balinese script on a palm leaf manuscript strip. The text is arranged in two columns.

KAKAWIN ARJUNA WIWAHA 02

Pusat Dokumentasi
Dinas Kebudayaan Provinsi Bali

12

B

Handwritten Balinese script on a palm leaf manuscript strip. The text is arranged in approximately 12 horizontal lines. There are some faint markings and a small circular hole on the right side of the leaf.

13

A

Handwritten Balinese script on a palm leaf manuscript strip. The text is arranged in approximately 12 horizontal lines. There are some faint markings and a small circular hole on the right side of the leaf.

KAKAWIN ARJUNA WIWAHA 02

Pusat Dokumentasi
Dinas Kebudayaan Provinsi Bali

Handwritten text on a palm leaf manuscript strip, likely containing Balinese script (Kakawin Arjuna Wiwaha).

13

B

Handwritten text on a palm leaf manuscript strip, likely containing Balinese script (Kakawin Arjuna Wiwaha).

14

A

KAKAWIN ARJUNA WIWAHA 02

Pusat Dokumentasi
Dinas Kebudayaan Provinsi Bali

14
B

Handwritten Balinese script on a palm leaf manuscript strip, divided into two sections by a hole. The script is written in a traditional style.

15
A

Handwritten Balinese script on a palm leaf manuscript strip, divided into two sections by a hole. The script is written in a traditional style.

KAKAWIN ARJUNA WIWAHA 02
Pusat Dokumentasi
Dinas Kebudayaan Provinsi Bali

Handwritten Balinese script on a palm leaf manuscript strip. The text is arranged in approximately 10 horizontal lines across the length of the leaf. There are two circular holes visible on the strip, used for binding.

15
B

Handwritten Balinese script on a palm leaf manuscript strip. The text is arranged in approximately 10 horizontal lines across the length of the leaf. There are two circular holes visible on the strip, used for binding.

16
A

KAKAWIN ARJUNA WIWAHA 02

Pusat Dokumentasi
Dinas Kebudayaan Provinsi Bali

176 16
B

Handwritten Balinese script on a palm leaf manuscript strip, consisting of two columns of text.

177 17
A

Handwritten Balinese script on a palm leaf manuscript strip, consisting of two columns of text. The second column includes a list of numbers: 100-10-0100-10-01000=100.

KAKAWIN ARJUNA WIWAHA 02

Pusat Dokumentasi
Dinas Kebudayaan Provinsi Bali

17

17

B

Handwritten Balinese script on a palm leaf manuscript strip, containing text from the Kakawin Arjuna Wiwaha.

18

18

A

Handwritten Balinese script on a palm leaf manuscript strip, continuing the text from the Kakawin Arjuna Wiwaha.

KAKAWIN ARJUNA WIWAHA 02

Pusat Dokumentasi
Dinas Kebudayaan Provinsi Bali

ꦫꦸ

18

B

Handwritten Balinese script on a palm leaf manuscript strip, divided into two columns by a central hole. The script is written in a traditional style.

ꦫꦸ

19

A

Handwritten Balinese script on a palm leaf manuscript strip, divided into two columns by a central hole. The script is written in a traditional style.

KAKAWIN ARJUNA WIWAHA 02

Pusat Dokumentasi
Dinas Kebudayaan Provinsi Bali

rw

19

B

Handwritten Balinese script on a palm leaf manuscript strip, containing two columns of text.

rw

20

A

Handwritten Balinese script on a palm leaf manuscript strip, containing two columns of text.

KAKAWIN ARJUNA WIWAHA 02

Pusat Dokumentasi
Dinas Kebudayaan Provinsi Bali

20
B

Handwritten Balinese script on a palm leaf manuscript strip, containing two columns of text.

21
A

Handwritten Balinese script on a palm leaf manuscript strip, containing two columns of text.

KAKAWIN ARJUNA WIWAHA 02

Pusat Dokumentasi
Dinas Kebudayaan Provinsi Bali

21

21

B

Handwritten Balinese script on a palm leaf manuscript strip, consisting of two columns of text.

22

22

A

Handwritten Balinese script on a palm leaf manuscript strip, consisting of two columns of text.

KAKAWIN ARJUNA WIWAHA 02
Pusat Dokumentasi
Dinas Kebudayaan Provinsi Bali

22
B

Handwritten Balinese script on a palm leaf manuscript strip, containing two columns of text.

23
A

Handwritten Balinese script on a palm leaf manuscript strip, containing two columns of text.

KAKAWIN ARJUNA WIWAHA 02
Pusat Dokumentasi
Dinas Kebudayaan Provinsi Bali

23

23

B

Handwritten Balinese script on a palm leaf manuscript strip, fragment 23B.

24

24

A

Handwritten Balinese script on a palm leaf manuscript strip, fragment 24A.

KAKAWIN ARJUNA WIWAHA 02

Pusat Dokumentasi
Dinas Kebudayaan Provinsi Bali

24

B

Handwritten Balinese script on a palm leaf manuscript strip. The text is arranged in approximately 12 horizontal lines. On the left side, there is a small handwritten mark that appears to be '24 B'. On the right side, there is a date written as '001-0-1000'.

25

A

Handwritten Balinese script on a palm leaf manuscript strip. The text is arranged in approximately 12 horizontal lines. On the left side, there is a small handwritten mark that appears to be '25 A'. On the right side, there is a date written as '001-0-1000'.

KAKAWIN ARJUNA WIWAHA 02

Pusat Dokumentasi
Dinas Kebudayaan Provinsi Bali

25

B

Handwritten Balinese script on a palm leaf manuscript strip, fragment 25. The text is arranged in two columns, with a small decorative symbol at the beginning of the first column.

26

A

Handwritten Balinese script on a palm leaf manuscript strip, fragment 26. The text is arranged in two columns, with a small decorative symbol at the beginning of the first column.

KAKAWIN ARJUNA WIWAHA 02

Pusat Dokumentasi
Dinas Kebudayaan Provinsi Bali

26

B

Handwritten Balinese script on a palm leaf manuscript strip, consisting of two columns of text.

27

A

Handwritten Balinese script on a palm leaf manuscript strip, consisting of two columns of text.

KAKAWIN ARJUNA WIWAHA 02
Pusat Dokumentasi
Dinas Kebudayaan Provinsi Bali

27
B

Handwritten Balinese script on a palm leaf manuscript strip, featuring a sequence of numbers at the beginning: -0-000-01000100-0-010-0.

28
A

Handwritten Balinese script on a palm leaf manuscript strip.

KAKAWIN ARJUNA WIWAHA 02
Pusat Dokumentasi
Dinas Kebudayaan Provinsi Bali

28
B

Handwritten Balinese script on a palm leaf manuscript strip, divided into two columns.

29
A

Handwritten Balinese script on a palm leaf manuscript strip, divided into two columns.

KAKAWIN ARJUNA WIWAHA 02

Pusat Dokumentasi
Dinas Kebudayaan Provinsi Bali

30
29
B

Handwritten Balinese script on a palm leaf manuscript strip, containing two columns of text.

30
30
A

Handwritten Balinese script on a palm leaf manuscript strip, containing two columns of text.

KAKAWIN ARJUNA WIWAHA 02

Pusat Dokumentasi
Dinas Kebudayaan Provinsi Bali

Handwritten Balinese script on a palm leaf manuscript strip, labeled 30 B.

Handwritten Balinese script on a palm leaf manuscript strip, labeled 31 A.

KAKAWIN ARJUNA WIWAHA 02
Pusat Dokumentasi
Dinas Kebudayaan Provinsi Bali

31

B

Handwritten text in Balinese script on a palm leaf manuscript strip, fragment 31B.

32

A

Handwritten text in Balinese script on a palm leaf manuscript strip, fragment 32A.

KAKAWIN ARJUNA WIWAHA 02

Pusat Dokumentasi
Dinas Kebudayaan Provinsi Bali

၅၅

33

B

Handwritten Balinese script on a palm leaf manuscript strip, consisting of two columns of text.

၅၆

34

A

Handwritten Balinese script on a palm leaf manuscript strip, consisting of two columns of text.

KAKAWIN ARJUNA WIWAHA 02

Pusat Dokumentasi
Dinas Kebudayaan Provinsi Bali

၅၅

34

B

Handwritten text in Balinese script on a palm leaf manuscript strip. The text is arranged in two columns, with a small decorative mark at the beginning of the first column.

၅၅

35

A

Handwritten text in Balinese script on a palm leaf manuscript strip. The text is arranged in two columns. A small decorative mark is visible at the beginning of the first column. On the right side of the strip, there is a date written in Balinese script: -- ၁၂-၀၅-၀၁ -- ၅၅.

KAKAWIN ARJUNA WIWAHA 02

Pusat Dokumentasi
Dinas Kebudayaan Provinsi Bali

၁၅

35

B

Handwritten text in Balinese script on a palm leaf manuscript strip, divided into two columns.

၁၆

36

A

Handwritten text in Balinese script on a palm leaf manuscript strip, divided into two columns.

KAKAWIN ARJUNA WIWAHA 02

Pusat Dokumentasi
Dinas Kebudayaan Provinsi Bali

37
B

Handwritten Balinese script on a palm leaf manuscript strip, consisting of two columns of text.

38
A

Handwritten Balinese script on a palm leaf manuscript strip, consisting of two columns of text.

KAKAWIN ARJUNA WIWAHA 02

Pusat Dokumentasi
Dinas Kebudayaan Provinsi Bali

38	B

Handwritten Balinese script on a palm leaf manuscript strip, consisting of two columns of text.

39	A

Handwritten Balinese script on a palm leaf manuscript strip, consisting of two columns of text.

KAKAWIN ARJUNA WIWAHA 02
Pusat Dokumentasi
Dinas Kebudayaan Provinsi Bali

Handwritten text on a palm leaf manuscript strip, likely containing Balinese script (Kawi).

39
B

Handwritten text on a palm leaf manuscript strip, likely containing Balinese script (Kawi).

40
A

KAKAWIN ARJUNA WIWAHA 02

Pusat Dokumentasi
Dinas Kebudayaan Provinsi Bali

80 40
B

Handwritten Balinese script on a palm leaf manuscript strip. The text is arranged in approximately 12 horizontal lines. A small red mark is visible at the right end of the strip.

81 41
A

Handwritten Balinese script on a palm leaf manuscript strip. The text is arranged in approximately 12 horizontal lines. A small red mark is visible at the right end of the strip.

KAKAWIN ARJUNA WIWAHA 02

Pusat Dokumentasi
Dinas Kebudayaan Provinsi Bali

ꦱꦫꦶ 41
B

Handwritten Balinese script on a palm leaf manuscript strip. The text is arranged in approximately 12 horizontal lines. On the right side of the strip, there is a date written in Balinese script: 100-10-0100-10.

ꦱꦫꦶ 42
A

Handwritten Balinese script on a palm leaf manuscript strip. The text is arranged in approximately 12 horizontal lines.

KAKAWIN ARJUNA WIWAHA 02

Pusat Dokumentasi
Dinas Kebudayaan Provinsi Bali

42

B

Handwritten Balinese script on a palm leaf manuscript strip, consisting of two columns of text.

43

A

Handwritten Balinese script on a palm leaf manuscript strip, consisting of two columns of text.

KAKAWIN ARJUNA WIWAHA 02
Pusat Dokumentasi
Dinas Kebudayaan Provinsi Bali

Handwritten Balinese script on a palm leaf manuscript strip. The text is arranged in two columns. On the left side, there is a small handwritten mark that appears to be '32'. On the right side, there is a small handwritten mark that appears to be '33'. The script is finely etched into the surface of the dried leaf.

33	43
	B

Handwritten Balinese script on a palm leaf manuscript strip. The text is arranged in two columns. On the left side, there is a small handwritten mark that appears to be '34'. On the right side, there is a small handwritten mark that appears to be '35'. The script is finely etched into the surface of the dried leaf.

34	44
	A

KAKAWIN ARJUNA WIWAHA 02

Pusat Dokumentasi
Dinas Kebudayaan Provinsi Bali

88

44

B

Handwritten Balinese script on a palm leaf manuscript strip, consisting of two columns of text.

89

45

A

Handwritten Balinese script on a palm leaf manuscript strip, consisting of two columns of text.

KAKAWIN ARJUNA WIWAHA 02
Pusat Dokumentasi
Dinas Kebudayaan Provinsi Bali

89 45
B

Handwritten Balinese script on a palm leaf manuscript strip, consisting of two lines of text.

86 46
A

Handwritten Balinese script on a palm leaf manuscript strip, consisting of two lines of text.

KAKAWIN ARJUNA WIWAHA 02

Pusat Dokumentasi
Dinas Kebudayaan Provinsi Bali

86

46

B

Handwritten Balinese script on a palm leaf manuscript strip, fragment B of Kakawin Arjuna Wiwaha 02. The text is arranged in two columns, with a small initial character on the left margin.

87

47

A

Handwritten Balinese script on a palm leaf manuscript strip, fragment A of Kakawin Arjuna Wiwaha 02. The text is arranged in two columns.

KAKAWIN ARJUNA WIWAHA 02

Pusat Dokumentasi
Dinas Kebudayaan Provinsi Bali

87

47

B

Handwritten text in Balinese script on a palm leaf manuscript strip. The text is arranged in two columns. On the left side, there is a small handwritten mark that appears to be 'paw'. On the right side, there is a small handwritten mark that appears to be 'paw'. The script is finely etched into the surface of the dried leaf.

88

48

A

Handwritten text in Balinese script on a palm leaf manuscript strip. The text is arranged in two columns. The script is finely etched into the surface of the dried leaf.

KAKAWIN ARJUNA WIWAHA 02

Pusat Dokumentasi
Dinas Kebudayaan Provinsi Bali

85 48
B

Handwritten Balinese script on a palm leaf manuscript strip, containing two columns of text.

85 49
A

Handwritten Balinese script on a palm leaf manuscript strip, containing two columns of text.

KAKAWIN ARJUNA WIWAHA 02
 Pusat Dokumentasi
 Dinas Kebudayaan Provinsi Bali

50 B
 90
 ...
 ...
 ...
 ...
 ...

51 A
 91
 ...
 ...
 ...
 ...
 ...

KAKAWIN ARJUNA WIWAHA 02
Pusat Dokumentasi
Dinas Kebudayaan Provinsi Bali

51
B

Handwritten Balinese script on a palm leaf manuscript strip. The text is arranged in two columns. A small circular hole is visible on the left side of the strip. The script is finely etched into the surface of the dried leaf.

52
A

Handwritten Balinese script on a palm leaf manuscript strip. The text is arranged in two columns. A small circular hole is visible on the left side of the strip. The script is finely etched into the surface of the dried leaf.

KAKAWIN ARJUNA WIWAHA 02

Pusat Dokumentasi
Dinas Kebudayaan Provinsi Bali

52

B

Handwritten Balinese script on a palm leaf manuscript strip, consisting of two columns of text.

53

A

Handwritten Balinese script on a palm leaf manuscript strip, consisting of two columns of text.

KAKAWIN ARJUNA WIWAHA 02

Pusat Dokumentasi
Dinas Kebudayaan Provinsi Bali

53
B

Handwritten text in Balinese script on a palm leaf. The text is arranged in several lines. A small number '27' is written in the top right corner of the leaf.

54
A

Handwritten text in Balinese script on a palm leaf. The text is arranged in several lines.

KAKAWIN ARJUNA WIWAHA 02
 Pusat Dokumentasi
 Dinas Kebudayaan Provinsi Bali

54
 B

Handwritten Balinese script on a palm leaf manuscript strip. The text is arranged in two columns. On the left side, there is a small handwritten number '99' and a larger number '54'. On the right side, there is a larger number '54' and a small handwritten number '99'. The script is finely etched into the surface of the dried leaf.

55
 A

Handwritten Balinese script on a palm leaf manuscript strip. The text is arranged in two columns. On the left side, there is a small handwritten number '99' and a larger number '55'. On the right side, there is a larger number '55' and a small handwritten number '99'. The script is finely etched into the surface of the dried leaf.

KAKAWIN ARJUNA WIWAHA 02
Pusat Dokumentasi
Dinas Kebudayaan Provinsi Bali

55
B
99

Handwritten Balinese script on a palm leaf manuscript strip, containing two columns of text.

56
A
96

Handwritten Balinese script on a palm leaf manuscript strip, containing two columns of text.

KAKAWIN ARJUNA WIWAHA 02

Pusat Dokumentasi
Dinas Kebudayaan Provinsi Bali

96
56
B

Handwritten Balinese script on a palm leaf manuscript strip, consisting of two columns of text.

97
57
A

Handwritten Balinese script on a palm leaf manuscript strip, consisting of two columns of text.

KAKAWIN ARJUNA WIWAHA 02

Pusat Dokumentasi
Dinas Kebudayaan Provinsi Bali

95

57

B

Handwritten Balinese script on a palm leaf manuscript fragment. The text is arranged in approximately 12 horizontal lines. A small circular hole is visible on the left side of the leaf. A faint number '95' is written at the top left corner of the leaf.

95

58

A

Handwritten Balinese script on a palm leaf manuscript fragment. The text is arranged in approximately 12 horizontal lines. A small circular hole is visible on the left side of the leaf.

KAKAWIN ARJUNA WIWAHA 02
Pusat Dokumentasi
Dinas Kebudayaan Provinsi Bali

95

58

B

Handwritten Balinese script on a palm leaf, consisting of two columns of text.

94

59

A

Handwritten Balinese script on a palm leaf, consisting of two columns of text.

KAKAWIN ARJUNA WIWAHA 02

Pusat Dokumentasi
Dinas Kebudayaan Provinsi Bali

95 59
B

Handwritten Balinese script on a palm leaf manuscript strip, consisting of two columns of text.

60 60
A

Handwritten Balinese script on a palm leaf manuscript strip, consisting of two columns of text.

KAKAWIN ARJUNA WIWAHA 02

Pusat Dokumentasi
Dinas Kebudayaan Provinsi Bali

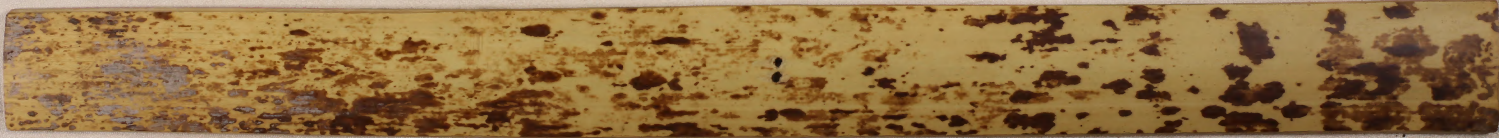
60
60
B

Handwritten Balinese script on a palm leaf manuscript strip. The text is arranged in two columns. The left column begins with a small symbol resembling a crescent moon and a star. The right column ends with a similar symbol. The script is finely etched into the surface of the dried leaf.

61
61
A

Handwritten Balinese script on a palm leaf manuscript strip. The text is arranged in two columns. The left column begins with a small symbol resembling a crescent moon and a star. The right column ends with a similar symbol. The script is finely etched into the surface of the dried leaf.

KAKAWIN ARJUNA WIWAHA 02
*Pusat Dokumentasi
Dinas Kebudayaan Provinsi Bali*



art	61
	B

KAKAWIN ARJUNA WIWAHA 02

*Pusat Dokumentasi
Dinas Kebudayaan Provinsi Bali*

