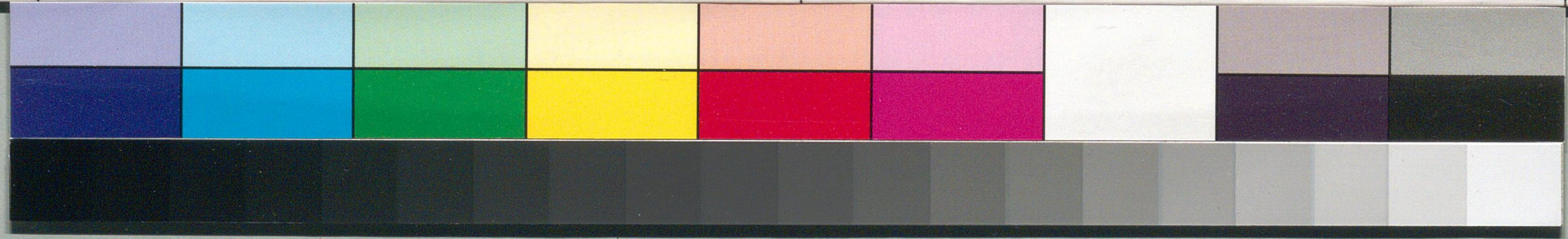
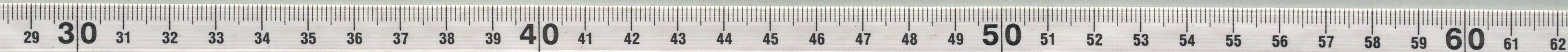


Handwritten Japanese text on a vertical strip of aged paper. The characters are written in black ink and appear to be in a cursive or semi-cursive style. The text is arranged vertically, with some characters being larger and more prominent than others. The paper shows signs of age, including creases and discoloration.



国立国会図書館 川村正平関係文書 147-3

兄

一合三日月

侍分上

一合二日月

口

此分道中

一合沙

伴同

一合去

り

此分道中

一合心

口

此分道中