

095  
2  
3

枕草子  
尊任園本

# Kodak Gray Scale



© Kodak, 2007 TM: Kodak

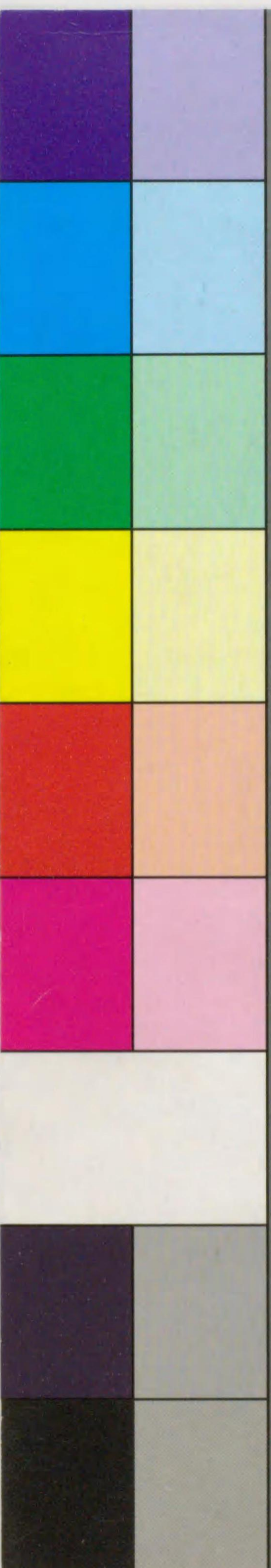
A 1 2 3 4 5 6 M 8 9 10 11 12 13 14 15 B 17 18 19

Inches 1 2 3 4 5 6 7 8  
cm 1 2 3 4 5 6 7 8 9 10 11 12 13 14 15 16 17 18 19

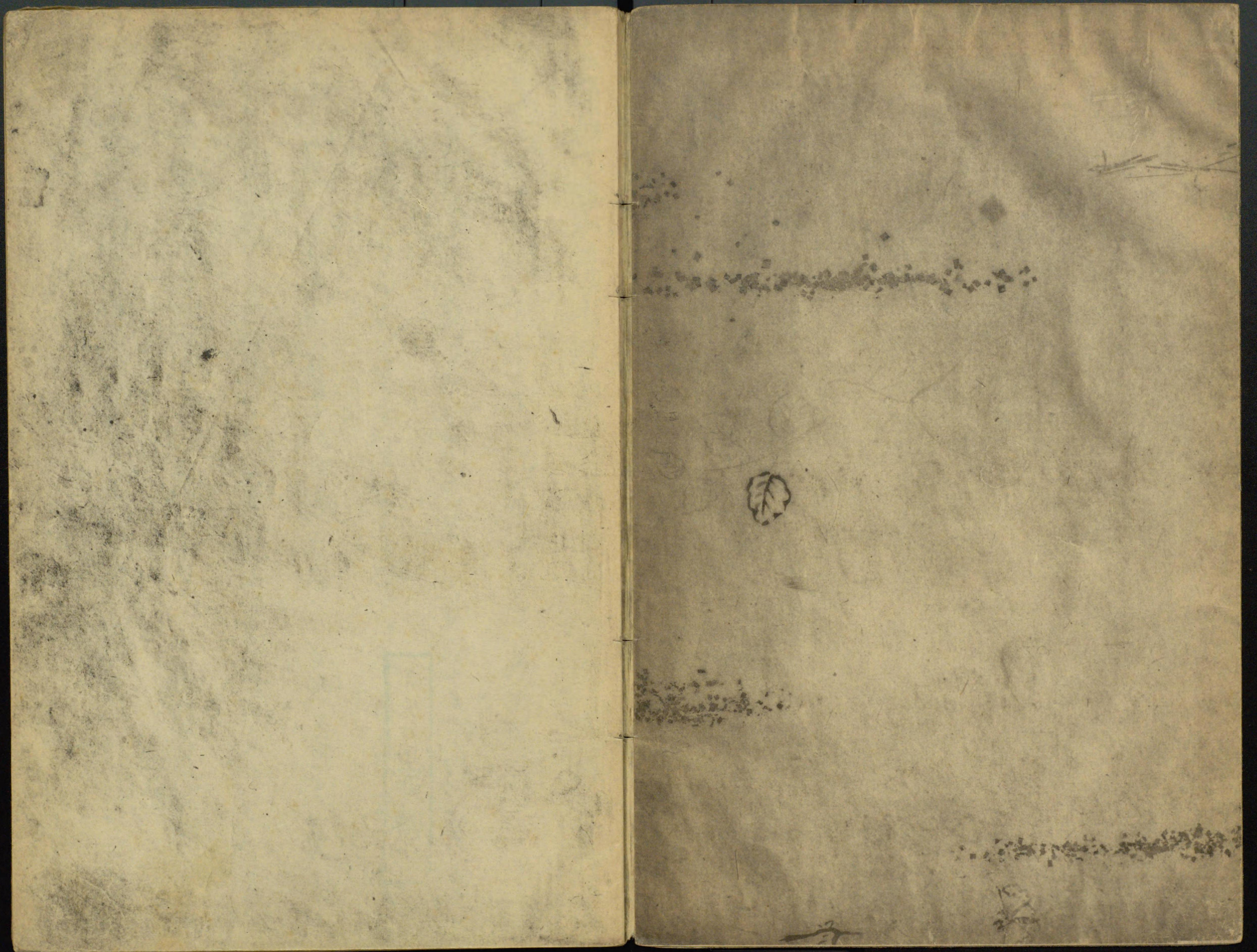
## Kodak Color Control Patches

Blue Cyan Green Yellow Red Magenta White 3/Color Black

© Kodak, 2007 TM: Kodak













Handwritten text in a cursive script, likely a historical document or manuscript. The text is written in a dark ink on aged paper. It consists of approximately 12 lines of text, starting with a large initial letter 'L' and ending with a period. The script is highly stylized and characteristic of the early modern period.

Handwritten text in a cursive script, likely a historical document or manuscript. The text is written in a dark ink on aged paper. It consists of approximately 12 lines of text, starting with a large initial letter 'L' and ending with a period. The script is highly stylized and characteristic of the early modern period.



Handwritten text in a cursive script, likely a historical document or letter. The text is written in a dark ink on aged, yellowish paper. It consists of approximately 12 lines of text, starting with a large initial letter 'A' and ending with a smaller, possibly concluding mark. The script is dense and characteristic of early modern European handwriting.

Handwritten text in a cursive script, continuing from the previous page. It consists of approximately 12 lines of text, starting with a large initial letter 'A' and ending with a smaller, possibly concluding mark. The script is dense and characteristic of early modern European handwriting.



梅の香は春の風をよそよそと  
吹かすやうに清く涼しく  
十数年前にわたる昔の  
家の庭に咲いた梅の花  
はさうな香りを放ち  
てゐたやうに思ふ  
春の風は梅の香りを  
よそよそと吹かすやう  
に清く涼しく吹かす  
やうに思ふ



Handwritten text in a cursive script, likely a letter or a page from a manuscript. The text is written in a fluid, connected style across multiple lines. The ink is dark, and the paper shows signs of age and wear.

Handwritten text in a cursive script, likely a letter or a page from a manuscript. The text is written in a fluid, connected style across multiple lines. The ink is dark, and the paper shows signs of age and wear.



Handwritten text in a cursive script, likely a historical document or manuscript. The text is written in a dark ink on aged, yellowish paper. It consists of approximately 15 lines of text, with some lines starting with a large initial letter. The script is highly stylized and difficult to decipher without a key. The text is arranged in a single column on the page.











Handwritten text in a cursive script, likely a historical document or manuscript, spanning two pages. The text is written in a dark ink on aged, yellowish paper. The script is highly stylized and difficult to decipher, but appears to be a form of early modern European cursive. The text is arranged in approximately 15 lines per page, with some lines starting with a small decorative flourish or initial. The overall appearance is that of a personal letter or a private record.



Handwritten text in a cursive script, likely a historical document or letter, spanning two pages. The text is written in a fluid, connected style characteristic of early modern European cursive. The right page contains approximately 12 lines of text, while the left page contains approximately 13 lines. The ink is dark, and the paper shows signs of age and wear.







Handwritten text in a cursive script, likely Arabic or Persian, spanning two pages. The text is arranged in approximately 15 horizontal lines per page, written from right to left. The ink is dark brown or black on aged, yellowish paper. The script is highly fluid and connected, characteristic of the Maghrebi or Ottoman styles. There are some faint, illegible markings in the center of the right page, possibly bleed-through from the reverse side.



Handwritten text in a cursive script, likely a letter or document. The text is written in a fluid, connected style across approximately 12 lines. The ink is dark and the paper shows signs of age.

Handwritten text in a cursive script, continuing from the previous page. The text is written in a fluid, connected style across approximately 12 lines. The ink is dark and the paper shows signs of age.



Handwritten text in a cursive script, likely a historical document or letter. The text is written in a dark ink on aged, yellowish paper. It consists of approximately 12 lines of text, starting with a large initial letter 'D'.

Handwritten text in a cursive script, continuing from the previous page. The text is written in a dark ink on aged, yellowish paper. It consists of approximately 12 lines of text, starting with a large initial letter 'D'.



Handwritten text in a cursive script, likely a historical document or letter. The text is written in a dark ink on aged, yellowish paper. It consists of approximately 12 lines of text, starting with a large initial letter 'S'.

Handwritten text in a cursive script, continuing from the previous page. The text is written in a dark ink on aged, yellowish paper. It consists of approximately 12 lines of text, starting with a large initial letter 'S'.



Handwritten text in a cursive script, likely a historical document or manuscript. The text is written in a dark ink on aged, yellowish paper. The script is dense and fills most of the page, with some lines starting with a large initial letter. The text is written in a cursive script, likely a historical document or manuscript. The text is written in a dark ink on aged, yellowish paper. The script is dense and fills most of the page, with some lines starting with a large initial letter. The text is written in a cursive script, likely a historical document or manuscript. The text is written in a dark ink on aged, yellowish paper. The script is dense and fills most of the page, with some lines starting with a large initial letter.



Handwritten text in a cursive script, likely a historical document or manuscript, spanning two pages. The text is written in a dark ink on aged, yellowish paper. The script is dense and continuous across both pages, with some variations in line spacing and ink saturation. The text appears to be a single, flowing passage of writing, possibly a letter or a record. The right page shows some signs of wear and discoloration, particularly towards the bottom edge.



Handwritten text in a cursive script, likely a letter or document, starting with a large initial letter.

Small handwritten mark or initial at the start of a line.

Main body of handwritten text in a cursive script, consisting of several lines of text.

Main body of handwritten text in a cursive script, consisting of several lines of text, including a large initial letter at the beginning.



Handwritten text in a cursive script, likely a historical document or manuscript. The text is written in a dark ink on aged, yellowish paper. The script is dense and fills most of the page, with some lines starting with a small decorative flourish. The handwriting is consistent throughout, suggesting a single scribe. The text is arranged in approximately 15 horizontal lines across the page.



Handwritten text in a cursive script, likely a historical document or manuscript. The text is written in a dark ink on aged, yellowish paper. The script is dense and continuous across the page, with some variations in line height and spacing. The text is written in a cursive script, likely a historical document or manuscript. The text is written in a dark ink on aged, yellowish paper. The script is dense and continuous across the page, with some variations in line height and spacing. The text is written in a cursive script, likely a historical document or manuscript. The text is written in a dark ink on aged, yellowish paper. The script is dense and continuous across the page, with some variations in line height and spacing.



Handwritten text in a cursive script, likely a historical document or manuscript. The text is written in a dark ink on aged, yellowish paper. It consists of approximately 12 lines of text, with some lines starting with a small decorative flourish. The script is dense and characteristic of early modern European handwriting.

Handwritten text in a cursive script, continuing from the previous page. The text is written in a dark ink on aged, yellowish paper. It consists of approximately 12 lines of text, with some lines starting with a small decorative flourish. The script is dense and characteristic of early modern European handwriting.



Handwritten text in Arabic script, consisting of approximately 15 lines of dense, cursive writing. The text is written in black ink on aged, yellowish paper. The script is highly stylized and difficult to decipher without specialized knowledge of the dialect or context. The lines are roughly horizontal and fill most of the page area.







Handwritten text in a cursive script, likely a historical document or manuscript. The text is written in a dark ink on aged, yellowish paper. It consists of approximately 12 lines of text, starting with a large initial letter on the left side of the page. The script is dense and characteristic of early modern European handwriting.

Handwritten text in a cursive script, continuing from the previous page. The text is written in a dark ink on aged, yellowish paper. It consists of approximately 12 lines of text, starting with a large initial letter on the left side of the page. The script is dense and characteristic of early modern European handwriting.



Handwritten text in a cursive script, likely a historical document or manuscript, spanning two pages. The text is written in a dark ink on aged, yellowish paper. The script is highly stylized and difficult to decipher, but appears to be a form of early modern European cursive. The text is arranged in approximately 15 lines per page, with some lines starting with a large initial letter. The overall appearance is that of a personal letter or a private record.







Handwritten text in Arabic script, top line of the right page.

Main body of handwritten text in Arabic script on the right page.

Main body of handwritten text in Arabic script on the left page.



Handwritten text in a cursive script, likely a historical document or manuscript. The text is written in a dark ink on aged, yellowish paper. The script is dense and continuous across the page, with some variations in line thickness and spacing. The text is arranged in a single column, starting from the top left and moving downwards. The characters are highly stylized and interconnected, characteristic of a cursive hand. The overall appearance is that of a well-preserved but aged piece of paper with a clear, legible script.



Handwritten text in a cursive script, likely a letter or document, spanning across the top of both pages. The text is written in a fluid, connected style.

九月二十一日

九月二十一日

九月二十一日

九月二十一日

九月二十一日

九月二十一日



Handwritten text in a cursive script, likely a historical document or manuscript. The text is written in a dark ink on aged, yellowed paper. The script is dense and fills most of the page, with some lines starting with capital letters that appear to be names or titles. The handwriting is consistent throughout, suggesting a single scribe. The paper shows signs of wear, including some staining and discoloration, particularly near the top edge.



Handwritten text in cursive script, likely a manuscript page. The text is arranged in a single column and spans across the gutter of the book. The script is dense and fluid, characteristic of historical cursive handwriting. The page is numbered '7' in the top right corner.

7







Handwritten text in a cursive script, likely a historical document or manuscript. The text is written in a dark ink on aged, yellowish paper. The script is dense and fills most of the page, with some lines starting with a large initial letter. The text is written in a cursive script, likely a historical document or manuscript. The text is written in a dark ink on aged, yellowish paper. The script is dense and fills most of the page, with some lines starting with a large initial letter. The text is written in a cursive script, likely a historical document or manuscript. The text is written in a dark ink on aged, yellowish paper. The script is dense and fills most of the page, with some lines starting with a large initial letter.



Handwritten text in Arabic script, consisting of approximately 15 lines of dense cursive writing across two pages. The script is highly stylized and characteristic of historical Islamic manuscripts. The text is arranged in a single column on each page, with some lines starting with a small decorative flourish or 'shamsa'.







How the sun moves in the sky  
the motion of the planets  
the Earth's rotation  
the Earth's orbit  
the Earth's axis  
the Earth's tilt  
the Earth's rotation  
the Earth's orbit  
the Earth's axis  
the Earth's tilt

the Earth's rotation  
the Earth's orbit  
the Earth's axis  
the Earth's tilt  
the Earth's rotation  
the Earth's orbit  
the Earth's axis  
the Earth's tilt  
the Earth's rotation  
the Earth's orbit  
the Earth's axis  
the Earth's tilt















Handwritten text in a cursive script, likely a letter or a page from a manuscript. The text is written in a dark ink on aged, yellowish paper. The script is dense and fills most of the page, with some lines starting with capital letters. The handwriting is consistent throughout, suggesting a single scribe. The text is arranged in approximately 15 horizontal lines across the page.







Handwritten text in a cursive script, likely a letter or a page from a manuscript. The text is written in a fluid, connected style across two pages. The characters are dark and the paper shows signs of age and wear.







Handwritten text in a cursive script, likely a historical document or manuscript. The text is arranged in approximately 15 horizontal lines across the page. The script is dense and characteristic of early modern European cursive. The document appears to be a page from a larger work, with some lines starting with capital letters that may indicate the beginning of new sections or paragraphs. The ink is dark, and the paper shows signs of age, including some staining and discoloration.



Handwritten text in a cursive script, likely a historical document or manuscript. The text is written in a dark ink on aged, yellowish paper. The script is highly stylized and difficult to decipher without specialized knowledge of the language or dialect. The text is arranged in approximately 15 lines across the page.



Handwritten text in a cursive script, likely a historical document or manuscript, spanning two pages. The text is written in a dark ink on aged, yellowish paper. The script is highly stylized and difficult to decipher, but appears to be a form of early modern European cursive. The text is arranged in approximately 15 lines across the two pages, with some lines starting with a large initial letter. The overall appearance is that of a personal letter or a private record.











Handwritten text in a cursive script, likely a historical document or letter, spanning two pages. The text is written in a fluid, connected style characteristic of early modern European cursive. The right page contains a small mark resembling a cross or a specific symbol near the top of the text.



Handwritten text in a cursive script, likely a historical document or manuscript. The text is written in a dark ink on aged, yellowish paper. The script is dense and continuous across the page, with some variations in line height and spacing. The text is arranged in approximately 15 horizontal lines, filling most of the page area. The characters are highly stylized and interconnected, characteristic of a cursive hand. The overall appearance is that of a well-preserved but aged piece of historical writing.



Handwritten text in Arabic script, top line of the left page.

Handwritten text in Arabic script, middle section of the left page.

Handwritten text in Arabic script, bottom section of the left page.

Handwritten text in Arabic script, top line of the right page.



Handwritten text in a cursive script, likely a historical document or manuscript. The text is written in dark ink on aged, yellowed paper. It consists of approximately 15 lines of text, with some lines starting with large, decorative initial letters. The script is dense and characteristic of early modern European handwriting.



Handwritten text in cursive script, likely a letter or document, covering the top half of the page.

Handwritten text in cursive script, continuing the document from the top half.

Handwritten text in cursive script, covering the bottom half of the page.



Handwritten text in a cursive script, likely a historical document or letter. The text is written in a dark ink on aged, yellowish paper. The script is dense and flowing, characteristic of a cursive hand. The text is arranged in approximately 15 horizontal lines across the page. The first line on the left side of the page begins with a large, stylized initial letter, possibly 'G'. The text continues across the page with various words and phrases, though the specific meaning is difficult to discern due to the cursive nature of the script. The paper shows signs of age, including some discoloration and slight wear at the edges.



Handwritten text in a cursive script, likely a historical document or manuscript, spanning two pages. The text is written in a dark ink on aged, yellowish paper. The script is highly stylized and appears to be a form of shorthand or a specific dialect. The text is arranged in approximately 15 horizontal lines across the page. The right page contains a small metal fastener or clip near the center fold.



Handwritten text in a cursive script, likely a historical document or manuscript, spanning two pages. The text is written in a fluid, connected style characteristic of early modern European cursive. The ink is dark, and the paper shows signs of age, including yellowing and some staining. The writing is dense and fills most of the page area.



Handwritten text in a cursive script, likely a historical document or letter, spanning two pages. The text is written in a dark ink on aged, yellowish paper. The script is highly stylized and difficult to decipher without specialized knowledge of the language or dialect. The text is arranged in approximately 15 horizontal lines across the two pages.



たれども... 巻を... 使母て... せしめ...  
しに... せし

たれども... 巻を... 使母て... せしめ...  
しに... せし







Handwritten text in a cursive script, likely a historical document or manuscript, spanning two pages. The text is written in a dark ink on aged, yellowish paper. The script is highly stylized and continuous across lines, characteristic of a cursive hand. The text is arranged in approximately 15 horizontal lines per page, with some variations in line length and spacing. The overall appearance is that of a dense, flowing record of information.



Handwritten text in a cursive script, likely a letter or a page from a manuscript. The text is written in a fluid, connected style across two pages. The right page contains approximately 12 lines of text, and the left page contains approximately 12 lines of text. The ink is dark, and the paper shows signs of age and wear.







Handwritten text in a cursive script, likely a historical document or manuscript, spanning two pages. The text is written in a dark ink on aged, yellowish paper. The script is highly stylized and continuous across lines, with frequent loops and flourishes. The lines are roughly horizontal but follow the natural curve of the pages. The text is dense and fills most of the page area, with some larger characters or symbols interspersed. The overall appearance is that of a personal or official record from a past era.











Handwritten text in a cursive script, likely a historical document or letter. The text is written in a dark ink on aged paper. It begins with a large initial letter, possibly 'D', and continues with several lines of text. There are some faint markings and a small mark resembling a cross or a specific symbol in the middle of the text.

Handwritten text in a cursive script, continuing from the previous page. The text is written in a dark ink on aged paper. It begins with a large initial letter, possibly 'D', and continues with several lines of text. The script is consistent with the previous page, showing a high level of fluency and speed in writing.



Handwritten text in a cursive script, likely a historical document or letter. The text is written in a dark ink on aged paper. The script is dense and fills most of the page.

Handwritten text in a cursive script, continuing from the previous page. The text is written in a dark ink on aged paper. The script is dense and fills most of the page.



Handwritten text in cursive script, likely a letter or document, covering the left page of the manuscript.

Handwritten text in cursive script, likely a letter or document, covering the right page of the manuscript.











Handwritten text in Arabic script, consisting of approximately 12 lines of dense cursive writing.

Handwritten text in Arabic script, consisting of approximately 12 lines of dense cursive writing, continuing from the previous page.











Handwritten text in a cursive script, likely a letter or a page from a manuscript. The text is written in a dark ink on aged, yellowish paper. The script is dense and flowing, with many loops and flourishes. The text is arranged in approximately 12 horizontal lines across the page.

Handwritten text in a cursive script, likely a letter or a page from a manuscript. The text is written in a dark ink on aged, yellowish paper. The script is dense and flowing, with many loops and flourishes. The text is arranged in approximately 12 horizontal lines across the page. A small, faint mark or signature is visible near the bottom center of the page.







Handwritten text in a cursive script, likely a letter or a page from a manuscript. The text is written in a dark ink on aged, yellowish paper. The script is dense and fills most of the page, with some lines starting with a small mark resembling a cross or a stylized 'X'. The handwriting is consistent throughout, suggesting a single scribe. The text is arranged in approximately 18 horizontal lines across the page.



Handwritten text in a cursive script, likely a historical document or manuscript. The text is written in a dark ink on aged, yellowish paper. It consists of approximately 12 lines of text, with some lines starting with a large initial letter. The script is highly stylized and characteristic of the early modern period.

Handwritten text in a cursive script, continuing from the previous page. The text is written in a dark ink on aged, yellowish paper. It consists of approximately 12 lines of text, with some lines starting with a large initial letter. The script is highly stylized and characteristic of the early modern period.



Handwritten text in a cursive script, likely a historical document or manuscript. The text is written in a dark ink on aged, yellowish paper. The script is dense and fills most of the page, with some lines appearing slightly faded or less distinct than others. The overall appearance is that of a well-used, possibly archival, document.



Handwritten text in a cursive script, likely a historical document or manuscript. The text is written in a dark ink on aged, yellowish paper. The script is dense and fills most of the page, with some lines starting with a small decorative flourish. The text is arranged in approximately 15 horizontal lines across the page.



Handwritten text in a cursive script, likely a historical document or manuscript. The text is written in a dark ink on aged, yellowish paper. The script is highly stylized and difficult to decipher without a key. The text is arranged in approximately 15 horizontal lines across the page. The first line on the left side of the page begins with a large, decorative initial letter. The overall appearance is that of a formal or official document from a past era.







Handwritten text, possibly a title or header, located at the top of the right page.

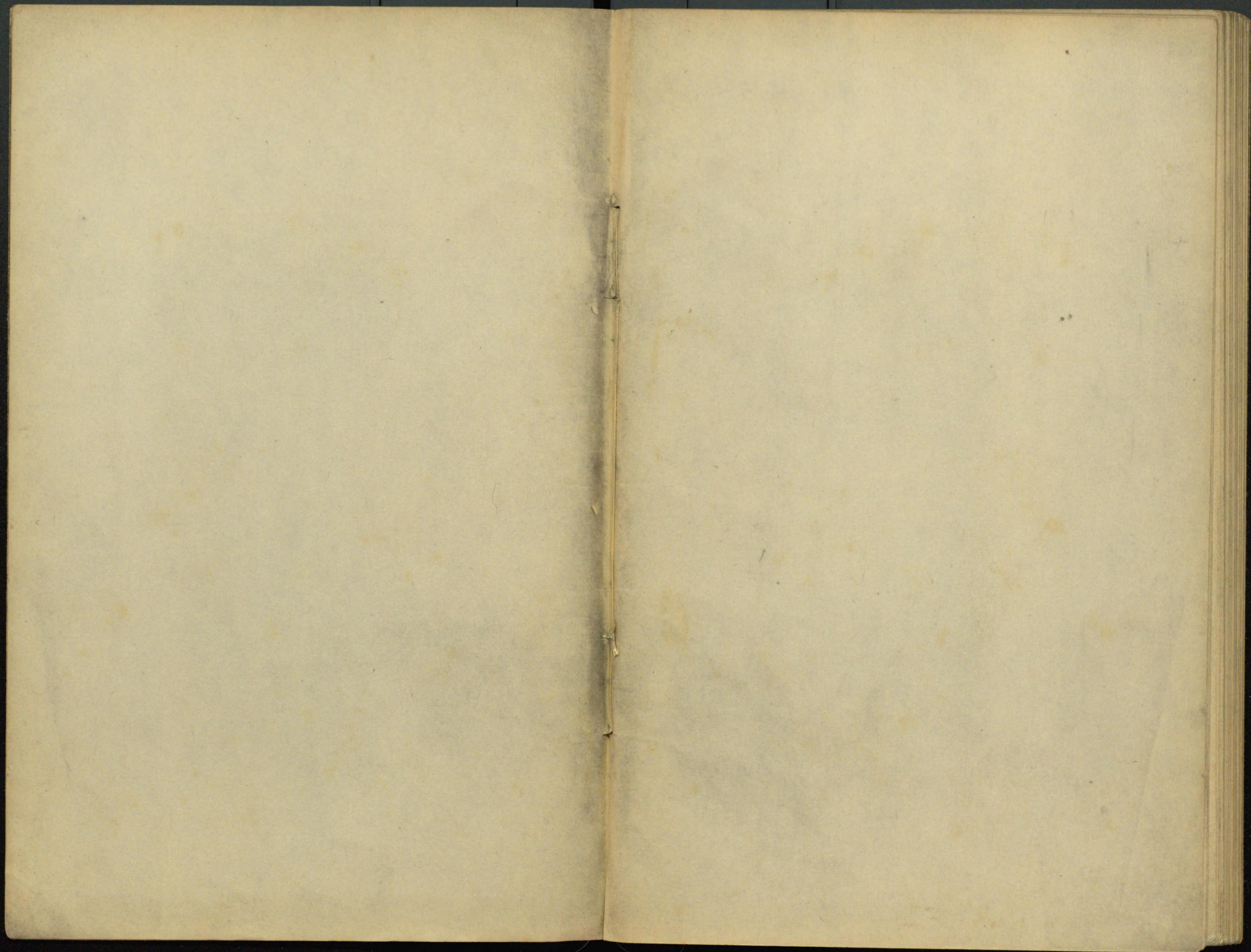
Handwritten text, possibly a date or a specific reference, located in the upper middle section of the right page.

Handwritten text, possibly a name or a subject, located in the middle section of the right page.

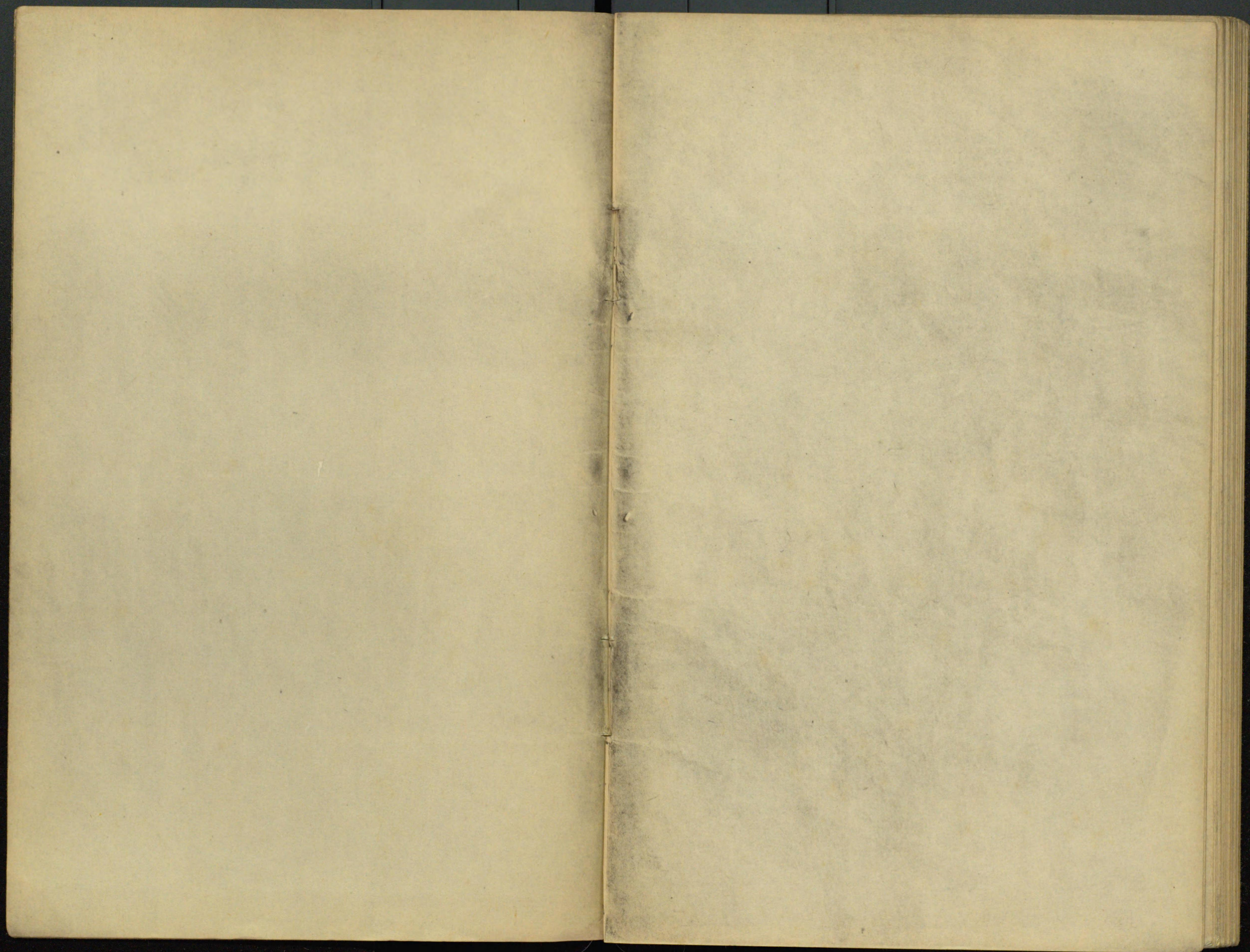
Handwritten text, possibly a name or a subject, located in the middle section of the right page.

Handwritten text, possibly a name or a subject, located in the middle section of the right page.

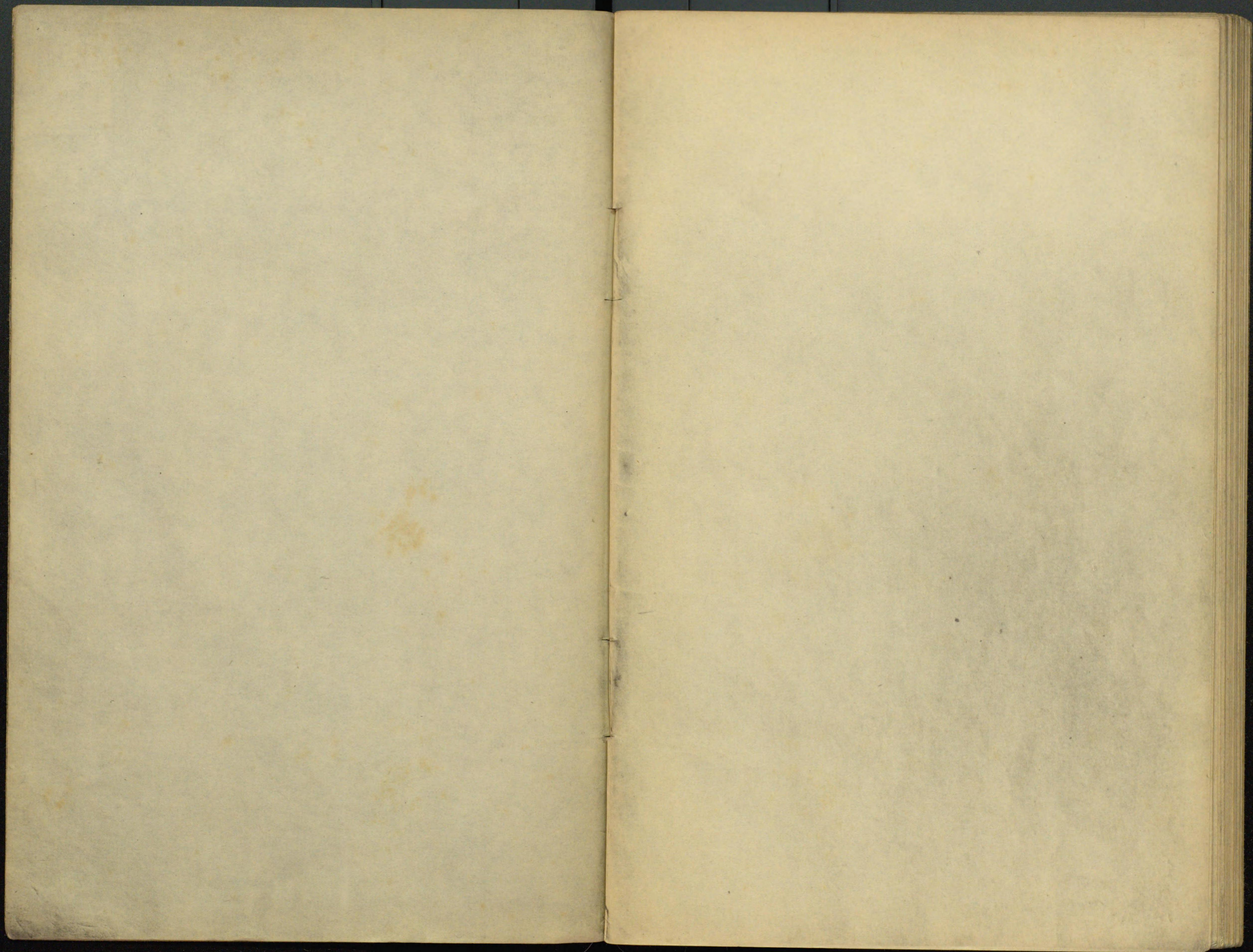














095  
2  
3

*[Faint, illegible markings and scribbles on the left page]*



