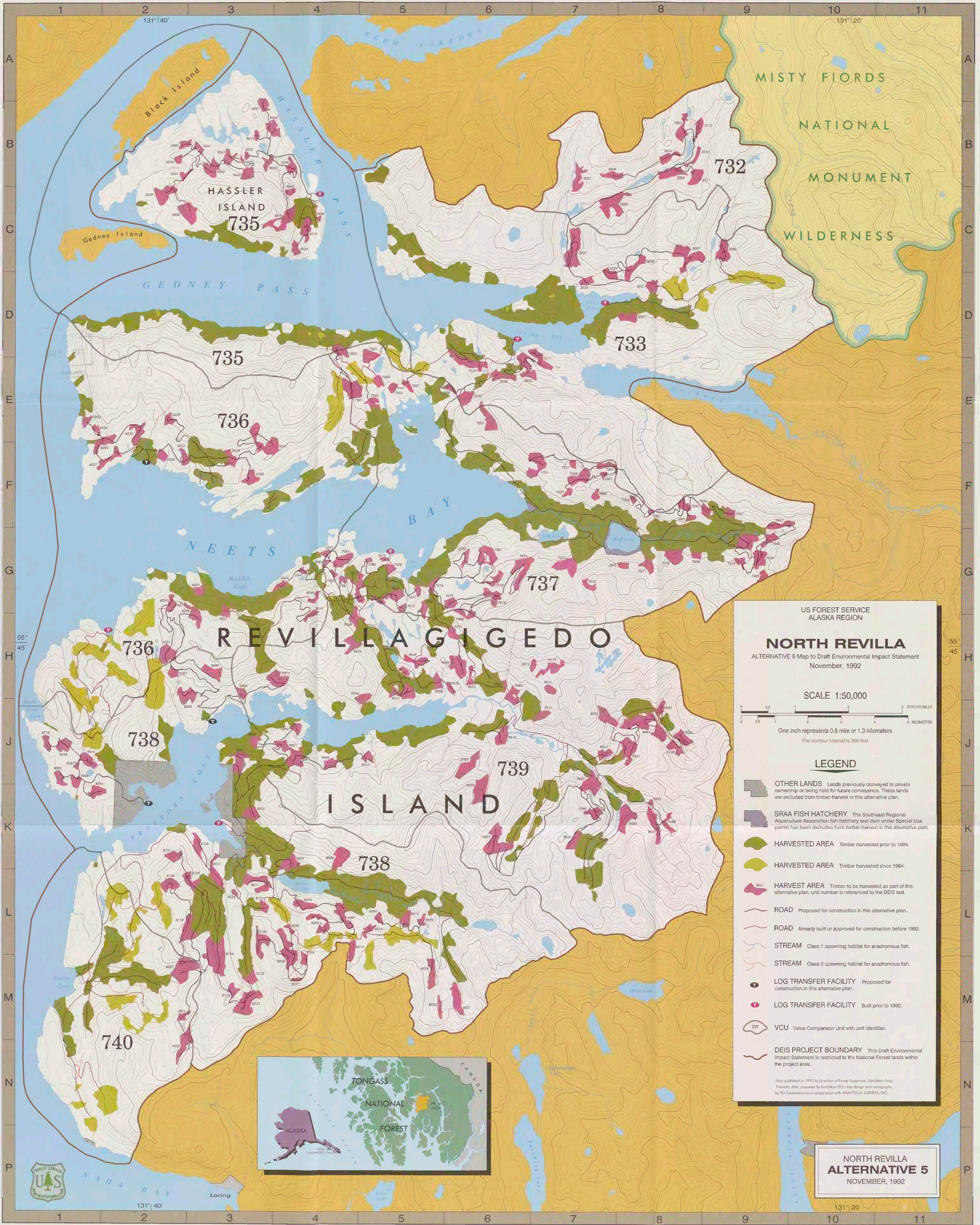


Historic, archived document

Do not assume content reflects current scientific knowledge, policies, or practices.



US FOREST SERVICE
ALASKA REGION

NORTH REVILLA
ALTERNATIVE 5 Map to Draft Environmental Impact Statement
November, 1992

SCALE 1:50,000

0 0.5 1 2 3 4 5 STATUTE MILES
0 0.5 1 2 3 4 5 KILOMETERS

One inch represents 0.8 mile or 1.3 kilometers
The contour interval is 200 feet

LEGEND

- OTHER LANDS Lands previously conveyed to private ownership or being held for future conveyances. These lands are excluded from timber-harvest in this alternative plan.
- SRAA FISH HATCHERY The Southeast Regional Aquaculture Association fish hatchery and dam under Special Use permit has been excluded from timber-harvest in this alternative plan.
- HARVESTED AREA Timber harvested prior to 1984.
- HARVESTED AREA Timber harvested since 1984.
- HARVEST AREA Timber to be harvested as part of this alternative plan, unit number is referenced to the DEIS text.
- ROAD Proposed for construction in this alternative plan.
- ROAD Already built or approved for construction before 1992.
- STREAM Class 1 spawning habitat for anadromous fish.
- STREAM Class 2 spawning habitat for anadromous fish.
- LOG TRANSFER FACILITY Proposed for construction in this alternative plan.
- LOG TRANSFER FACILITY Built prior to 1992.
- VCU Value Comparison Unit with unit identifier.
- DEIS PROJECT BOUNDARY This Draft Environmental Impact Statement is restricted to the National Forest lands within the project area.

Map published in 1992 by direction of Forest Supervisor, Ketchikan Area.
Thematic data prepared by Ketchikan SOI; map design and cartography by SOI Geometrics in cooperation with ANALYTICAL SURVEYS, INC.



NORTH REVILLA
ALTERNATIVE 5
NOVEMBER, 1992