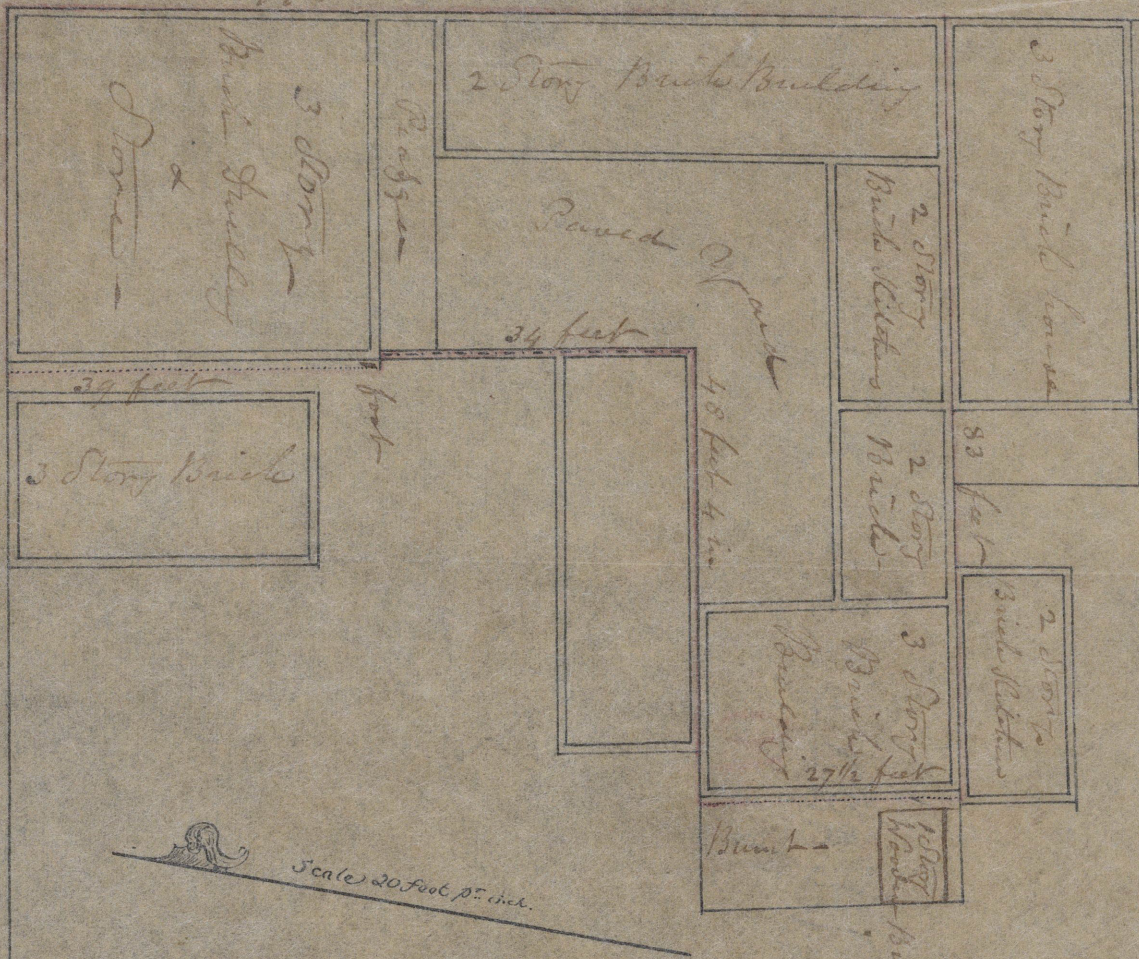


Church Street 45 feet wide -

99 feet 2 inches -

38 feet 4 inches -



Scale 20 feet per inch.

Plan of a lot described by Messrs. Paul, situated at the south west corner of Broad & Church Street in Charleston S.C. Carolina. Boundaries colored with lake.

Charles Paulsen  
at New York

20 Nov. 1897