

Historic, Archive Document

Do not assume content reflects current scientific knowledge, policies, or practices.

62.13

ALLING'S 1931 DAHLIAS



NEW DAHLIA, "*Miss Harriet Hoxter*"

C. Louis Alling

**DAHLIA
SPECIALIST**

251 Court Street

West Haven, Conn.

General Information

This list cancels all previous ones.

I send out divided field grown roots, everyone guaranteed true to name, and to arrive in good growing condition. I cannot guarantee them to grow if they are not unpacked immediately upon receipt.

All retail orders are sent Parcel Post unless instructions are received to send them otherwise. Orders taken at the Fall Shows, and all others not fully paid for will be sent C. O. D. at purchaser's expense, unless previous arrangements have been made. As the demand for some sorts often exceeds the supply, it will be well to order early and so avoid disappointment. It will also be well to name a few as second choice or state if I may substitute for any that are sold out. **Full cultural directions sent with every order.**

Remittance may be sent by Post Office or Express money order, registered letter, or check.

Stamps are very convenient for sums of less than \$2.00. On or two-cent denomination preferred.

On orders for less than \$1.00 please add 10c to cover postage and packing.

Commercial Growers. We offer the usual terms to bona fide commercial growers where our stock will permit. We are always glad to quote on large quantities.

Green Plants

We are offering many of the newer varieties in plant as well as root form. Our plants are well rooted, sturdily grown, and carefully packed for shipment. We grow thousands of plants annually for our own use and can discover but little difference in the results than if roots were used. Plants are offered at one-half root price, thus affording the opportunity of buying and trying out the novelties at a greatly reduced outlay.

Roots are what we formerly termed tubers.

A Message To My Friends

IT is with much pleasure that I again greet you from the pages of my annual catalogue. This year you will note several changes in classification. This is in line with the recent recommendations of The American Dahlia Society. The improvement of the Dahlia has been so rapid as to outgrow our present classification, and many of our finest varieties would not properly fit into any of our present divisions.

The most outstanding innovation has been the dividing of the Decorative into two classes, Formal and Informal. The term Hybrid has been eliminated, and the Hybrid Cactus section will now be known as Semi-Cactus. The entire group of Shows will be known as Ball Dahlias—a much more fitting description—and the term Hybrid is likewise eliminated here.

The Formal Decorative section will cover those flowers which are of more or less regular or stately formation, while the Informal section will take in those more or less loosely formed and pointed petal varieties covering all those which do not properly fit into the Semi-Cactus section. There has also been some changes in the Cactus section, but it has been lately recommended that some further changes be made and we are allowing this section to remain unchanged in this list for the present.

May I assure you of my most sincere appreciation of your past favors, and trust that I may again have the pleasure of serving you in the near future. Assuring you that every order will have my best, and personal attention, and with best wishes for a most successful season, I am,

Cordially yours,
C. LOUIS ALLING

January 1st, 1931.

LIBERAL EXTRAS

For Cash With Order Only

On orders amounting to \$10.00 or more, add stock of your selection to the amount of 10 percent.

On \$20.00 or over, 15 percent. On \$30.00 or over, 20 percent.

This discount applies to Roots and plants only and does not include special collections or dahlia growers' supplies.

1931 INTRODUCTION



MISS HARRIET HOCTOR, Informal Decorative

New Introductions, Continued

- Miss Harriet Hoctor.** Named at the New York Show for the noted Ziegfeld and RKO star, who most graciously posed for photographs which appeared in the New York papers. Was awarded the American Home Achievement Medal for the best new seedling of Connecticut origin at the Connecticut Horticultural Society show in Hartford as well as the prize for the best new seedling in the show. Was awarded a Certificate of Merit at the New Haven show, and was mentioned on the Dahlia Roll of Honor for 1930 by Mr. Derrill W. Hart. As the photo shows it is Informal Decorative in form, with a fine high center which never opens. It can be grown to very large size, and produces an abundance of flowers on long graceful stems. It grows quite tall and we found that the results were attained by pinching it back when a foot or so high. The color by comparison with Ridgeways chart is true purple which glistens when the sun is shining on the blooms.
Roots \$10.00 Plants \$5.00
- Dwight W. Morrow (Dahliadel),** Informal decorative. Named by Frederick E. Dixon. A gigantic red dahlia that is admired by everyone. Not only does the size and from of bloom make all who see it ardent admirers, but its richness of color makes it one of the most spectacular dahlias. This dahlia likes heavy soil and will stand quite rich culture. It should be topped once or twice and disbudded for terminal buds. It is by far the most outstanding red dahlia. At Atlantic City Show it won first in the Informal Decorative Seedling Class and we prophesy it will be a consistent winner in the Informal Decorative and Red Classes the coming season.
Roots \$15.00 Plants \$ 7.50
- Lincoln G. Dickey (Dahliadel),** Semi-Cactus... Here is about the most prolific producer of fine blooms it has ever been our good fortune to grow. Disbud it and the blooms will be immense, grow it naturally and they will be of good size in great quantities. One of the earliest to bloom and among the last to finish. The growing habits are ideal, making this dahlia really great, though not spectacular. Lincoln G. Dickey will be grown when many more spectacular dahlias have passed on. Won first prize in Atlantic City in Semi-Cactus Seedling Class and has been recommended for Certificate at the New Jersey Dahlia Society Trial Grounds, 1930
Roots \$10.00 Plants \$ 5.00
- City of Poughkeepsie.** Incurved Cactus. A variety which originated in the parks of Poughkeepsie, N. Y., and is being offered to the public for the first time this year. It is something on the order of the Farncot, but is a much heavier built bloom. The color is much the same, deep purple with white tips.
Plants \$ 5.00

New Introductions, Continued

- Frau O. Bracht.** Semi-Cactus. This German introduction was awarded the American Home Sweepstakes for the best new variety in the New York Show, 1930. It would be hard to imagine a more clean-cut outstanding bloom. The color is clearest pale primrose yellow. The flowers stand out well and the most perfect stems.Plants \$ 2.50
- Lord Lambourne, (I. D.)** Stredwick, the noted British grower, claims this to be the greatest variety they have ever introduced. It compares most favorably with our best American sorts. Large size, good stems and is described as sunset harmony of pink and gold, but the old gold and bronzy tints predominate.Plants \$ 5.00
- Mary Helen.** We are finding an increased interest in the large size Ball varieties, and were particularly impressed with the favorable comment created by our two large baskets of this variety at the New York Show. Mary Helen may best be described as an improved Estelle Christy as it is much the same formation and deep rich yellow color. However, it has a long erect stem, and unlike the older variety is a good producer of roots. The plants are very vigorous growers and produce an abundance of blooms from early until late. The photo being taken October 16th, when the plants had been in bloom for over two months. We were awarded two first prizes in the classes for this type in New Haven and the prize for the best vase of 12 Show at the Hartford Show.
- Roots \$3.00 Plants \$1.50

DECORATIVE DAHLIAS

F. D. denotes Formal Decorative. I. F. Informal Decorative

- Adaline Winter, (F. D.)** Brilliant vermilion carmine. Clean foliage, good stems, and a fine cut flower variety \$.50
- Amarillo Grande, (I. D.)** A large light yellow, showing just a slight bronze suffusion. Broad petals, and held on rigid stems. Roots \$1.50 Plants \$.75
- Avalon, (F. D.)** This is by no means a new variety, but is still a remarkable good yellow for cutting or exhibition. Our stock has been carefully selected each season and any plants which showed signs of weakness eliminated until we have, what we consider, a superior strain to that usually offered. The glistening yellow blooms are large, on perfect stems, freely produced. Roots \$.50
- Arthur W. Gray, (I. D.)** This was easily one of the most outstanding new varieties in our garden last year. It is a big one, on the best of stems. The petals are curled and pointed bordering very closely on the semi-cactus class. Color is a very pleasing combination of golden yellow, apricot and shrimp pink. Roots \$10.00 Plants \$ 5.00



MARY HELEN, Ball Dahlia. Described on Page 4

Decorative Dahlias, Continued

- Aztec Glory**, (I. D.) One of the most spectacular yellows of recent introduction. Clear picric yellow with deep massive flowers, petals curled forming a most artistic flower.
 Roots \$4.00 Plants \$ 2.00
- Biltmore**, (I. D.) The ground is a bright rich carmine and the petals are more or less tipped white. May best be described as a Peony-Decorative as late in the season it comes Peony type \$.50
- Bonnie Brae**, (F. D.) This is a Dahlia of extremely pleasing color, the ground color being cream and overlaid a delicate blush pink. It may be grown to enormous size \$.50
- Brian Breau**, (F. D.) This is one of the first plants in the garden to bloom, bears the blooms freely on long, strong stems until the end of the season. The color is deep royal purple \$.50
- Casper G. Ware**, (F. D.) An ideal cut flower because of its waxy texture and fine keeping qualities. Very free flowering. Color is bright silvery violet rose. \$ 1.00
- Charles Stratton**, (I. D.) This grand exhibition variety has created quite a sensation in the Dahlia world of New Jersey where it originated. It is a large fluffy flower of pale gold shaded and tipped old rose \$.75
- Charm**, (F. D.) Here is a real autumn colored dahlia, being a charming combination of burnt orange and golden yellow.... \$.50
- City of Trenton**, (I. D.) This is an Autumn color of unusual beauty. It is rich glowing tangerine with a reverse of strawberry. The petals twist and curl, giving a very attractive two-tone effect. Large, with long, erect stems.
 Roots \$3.00 Plants \$ 1.50
- Color Sergeant**, (I. D.) This striking variety is becoming very popular. Color is unusual, being rich, deep salmon bronze of one shade. A strong upright grower with perfect stems.
 Roots \$3.00 Plants \$ 1.50
- Datso**, (F. D.) This is large, well-formed Decorative. The color is a glowing deep rose pink, a little deeper in color than the Radiance Rose. The stems are perfect and the foliage is a lustrous green, and leathery in texture. It is of medium height and the large flowers are produced very freely. A beautiful Dahlia and very much admired, both at the exhibitions and in the garden. Roots \$7.50 Plants \$ 3.75
- Derrill W. Hart** (I. D.) This big copper bloom stands out either in the garden or at the exhibition. Has the desirable heavy, dark foliage. Good stems and last well when cut. Color is copper or deep orange with a slightly bronze over-cast
 Roots \$5.00 Plants \$ 2.50

Decorative Dahlias, Continued

- Dr. J. H. Carman** (F. D.) One of the new giant type of Dahlias which are now so much in demand. The petals are extremely broad but yet there is no appearance of coarseness. Color is American Beauty Rose with a slight silvery overcast. It may be called an improved Robert Treat and like that variety the color may be much improved by growing in partial shade
 Roots \$5.00 Plants \$ 2.50
- Eastern Star**, (F. D.) A waxy bloom which lasts well when cut. Color soft saffron with old gold shadings\$ 1.00
- Earl Williams**, (I. D.) An immense deep scarlet with white tip. One of the most popular bi-colored varieties\$.75
- El Dorado**, (I. D.) Here is a variety which just seems to enjoy throwing blooms and many of them. The color, too, is also different, being a vivid gold that deepens toward the base....\$.75
- Eliza Clarke Bull**, (F. D.) Large, fine waxy white. It is free in flowering and last well when cut\$ 1.50
- Eliza London Shepard**, (I. D.) A truly beautiful golden variety and an ideal grower. Every bloom faces upright on long upright stems. Color is clear rich orange gold with a slightly deeper reflex.
 Roots \$10.00 Plants \$ 5.00
- Elite Glory**, (F. D.) This is regarded as a distinct "break" in the Dahlia World on account of its immense size and marvelous width of petals. Its effect is spectacular either in the garden or on the exhibition table, where the size makes it of particular value. The color is bright radiant red.
 Roots \$1.50 Plants \$.75
- Elinor Vanderveer**, (F. D.) This satiny rose pink variety has become a favorite wherever grown. The large blooms are of great depth and substance, and are held well above the foliage on long stiff stems\$.75
- Fleming**, (F. D.) An excellent variety for cutting, by reason of its fine stems and clear, bright shell pink color. Very prolific\$.35
- Fort Monmouth**, (I. D.) This has undoubtedly taken more first prizes in the largest bloom section than any other variety grown. Ten inch blooms are not uncommon, and it has been reported up to fourteen inches. It has formerly been classed as a Hybrid Cactus, but we believe that it more properly fits into the new Informal section. The color is rich wine with an underlying tone of brilliant crimson maroon, and a slight bluish violet tone at the tips of petals. The stems are long and stiff, flowers do not burn and last well when cut.
 Roots \$5.00 Plants \$ 2.00
- Fort Washington**, (I. D.) The phrase, largest dahlia grown, seems to be very much overworked at present, but we really know of no other description for this monster. We have

F
O
R
T

M
O
N
M
O
U
T
H



I
N
F
O
R
M
A
L

D
E
C
O
R
A
T
I
V
E

Described on Page 7

Decorative Dahlias, Continued

seen many blooms of it 10 to 12 inches in diameter, and what is more unusual with these big fellows it has a fine, erect stem. The outer petals are a deep crimson deepening in the center to a fine, rich maroon. Roots \$2.00 Plants \$ 1.00

Francesca, (I. D.) A new Californian of many colors. It is a dull tanned rose with violet suffusions. There are many old gold markings on the petals, and a distinct bluish sheen. Good size with flowers standing well on the stems.

Roots \$3.00 Plants \$ 1.50

Gertrude Mae, (I. D.) This variety is bound to become popular when it becomes known. The color is a lovely deep pink with just the faintest overcast of primrose yellow, giving a sort of iridescent effect. Blooms are large and petals are somewhat pointed. Long stems Roots \$10.00 Plants \$ 5.00

Glory of New Haven, (F. D.) This huge pinkish mauve bloom is one that you should not be without. Blooms freely on stout stems\$.50

Decorative Dahlias, Continued

- Grace, (F. D.)** This variety attracted our attention at the A. D. S. trial gardens in 1928, where it was awarded a certificate of merit. It is extremely prolific in flowering, long stems, and an ideal cut flower variety. Its crowning feature is the unusual delicate coloring. The base color is ivory white with just a suggestion of lavender or silvery amethyst running through it. Roots \$5.00 Plants \$ 2.50
- Grace Curling, (I. D.)** A glorious Decorative of great size, imposing and beautiful in form and color. It is orchid lavender shading to white at base with something of a silvery overcast. Huge broad florets, bluntly tapering and tastefully notched at tips. Growth of plants and flower stems hard. We consider this one of the finest varieties we have ever imported. Roots \$5.00 Plants \$ 2.50
- Governor Trumbull, (F. D.)** A large free flowering variety of clear soft orchid somewhat resembling Mrs. I. de ver Warner, but lighter in color and a longer clean stem.....\$ 1.00
- Harry Mayer, (F. D.)** One of the very best of the new giant type of flowers. The plants are dwarf, sturdy growers with a tough heavy foliage. The stems are heavy and rigid, holding the mammoth blooms so as to look you directly in the face. The color, too, is different, pale rosalane purple with a delicate dusting, or overcast, of silver. Roots \$1.50 Plants \$.75
- Henderson Ives, (F. D.)** We used this big fellow very effectively in our exhibit at Madison Square Garden. We know of nothing that is marked and colored like it. The base is waxy white with heavy markings and mottles of rich carmine. Stiff stems and all other good habits. Roots \$2.00 Plants \$ 1.00
- Ida Perkins, (F. D.)** This fine white won the Garden and Home Builder Medal for the best new variety in the 1927 Boston show. Upright grower, strong stems, flowers of heavy texture and good keeper when cut. A white which we predict will become a standard cut flower in the very near future. Roots \$2.00 Plants \$ 1.00
- Jane Cowl, (I. D.)** This extraordinary Dahlia has created a greater sensation than any other introduction of recent years. If you can not have but one new Dahlia this year, let it be a "Jane Cowl." It is just about an ideal grower, being sturdy and branching freely; every branch bearing a fine bloom of large, uniform size. The huge glistening bronzy buff blooms are by no means coarse, neither are they stiff or formal, being made up of many broad petals slightly twisted or waved. The stems are rigid, holding the blooms at just the correct angle. The foliage is of the leather-like insect resisting type. Roots \$3.00 Plants \$ 1.00

G
R
A
C
E

C
U
R
L
I
N
G



I
N
F
O
R
M
A
L

D
E
C
O
R
A
T
I
V
E

Described on Page 9

Decorative Dahlias, Continued

Jersey's Daybreak, (F. D.) A variety which is much admired for its soft and soothing color, creamy yellow overlaid dainty peach pink. Rigid stems and foliage of heavy texture.

Roots \$3.00 Plants \$ 1.50

Jersey's Beacon, (F. D.) One of the most popular of Mr. Waite's introductions, and has been awarded the blue ribbon wherever it has been shown in the red classes. The color is Chinese scarlet, with a paler reverse giving a two-toned effect. The flowers are very large and globular in form. It is a prolific bloomer on stems which hold the bloom perfectly erect\$.75....

Jersey's Sovereign, (I. D.) A shade of color that few can describe. According to Ridgway's chart it is salmon-orange. A very vigorous grower with dark foliage which is resistant to the leaf hopper. A splendid cut flower.\$.75

Decorative Dahlias, Continued

- Jersey's Beauty**, (F. D.) There is perhaps more of this Dahlia grown for the cut flower markets than any one variety. The lovely pink color, and many other good points, such as long erect stems, and good keeping qualities, make it one of our finest standard varieties. It should be cut back and induced to branch to secure the maximum number of blooms.
 Roots \$.50
- Jersey's Glory**, (F. D.) A well formed flower nicely placed on the stem. The color may best be described as a yellow hue of orange. The long stems branch freely at the base, and it may be cut with stems as long as Jersey's Beauty.
 Roots \$5.00 Plants \$ 2.50
- Jersey's Ideal**, (I. D.) The color of this variety is best described as a lavender pink, although sometimes it is nearer lavender. The flowers are usually borne face up on the stem and the petals drooping gracefully down make a very deep and massive bloom. It is a vigorous grower, a very free bloomer and has an ideal stem. Roots \$1.00 Plants \$.75
- Judge Marean**, (F. D.) This, as the name implies, is one of the finest of the Marean varieties. It is a combination of salmon pink, red, yellow and gold. A very large flower, profuse bloomer, very early, and stands erect on fine stem ...\$.50
- Kathleen Norris**, (I. D.) This giant pink created a sensation at the 1928 A. D. S. show. It is a true rose pink, deepening later to a mellow pink with the center petals a lighter shade. Petals are broad and overlap each other with twisted tips. Blooms are held erect on long strong stems.
 Plants \$ 5.00
- Kemp's Violet Wonder**, (I. D.) The best violet color Dahlia to date. The predominating color of this great variety is naphthaline violet, with an underlying tone of royal purple, and bluish lavender reverse. Flowers are of true decorative type, and of massive proportions, attaining to a diameter of ten inches or more. Stems are long and stiff. Does not burn, and will keep well when cut.
 Roots \$5.00 Plants \$ 2.50
- King Midas**, (I. D.) This is perhaps the best golden yellow of recent introduction, and there have been many. It is one of the giant type, an early and continuous bloomer, long erect stems, and a fine keeper when cut.
 Roots \$7.50 Plants \$ 3.75
- Laura Morris**, (I. D.) This new variety is about as near insect proof as possible in Dahlias. It is a tall grower with heavy rubber like foliage. The color is deep golden yellow with a slight bronze overcast. Size is large.
 Roots \$5.00 Plants \$ 2.50

Decorative Dahlias, Continued

- Lady Lyndora**, (I. D.) A very pretty variety of a delicate pastel pink. Free flowering and a good florists variety.
 Roots \$2.00 Plants \$ 1.00
- Le Grand Manitou**, (F. D.) Ground color white, striped and splashed violet rose, but sometimes runs to the solid color when it is a beautiful clear violet rose. Large and striking flower.\$.35
- Maud Johnson**, (I. D.) A pretty variety of absolutely unique coloring, a pinkish violet shading to white flushed lavender, each petal tipped gold. Blooms early on an extra long stem.\$ 1.00
- Marmion**, (I. D.) This flower is of such enormous size and great depth, and looks so massive among the surrounding dahlias as to dwarf them all. The long cane-like stem holds the huge bloom well erect. Color is pure golden yellow with bronze suffusions on reverse of petals. Roots \$1.00 Plants \$.75
- Margaret Woodrow Wilson**, (I. D.) An exhibition decorative of immense size and wondrous beauty. The face of the petals is creamy white with a reverse of phlox-pink, giving an opalescent effect. One of the best late introductions.
 Roots \$1.00 Plants \$.50
- Meta Scammel**, (I. D.) The many twisted and curled petals make this a Dahlia of most artistic formation. The color is likewise most appealing, being amaranthe pink shading lighter at tips and reverse of petals. Makes a fine large bushy plant.
 Roots \$3.00 Plants \$ 1.50
- Mission Bell**, (F. D.) A big bloom of a pleasing pinkish magenta with just a slight gold suffusion. Good stems and free in flowering. A prize winner in the West.
 Roots \$5.00 Plants \$ 2.50
- Monmouth Champion**. Formal Decorative. A 1930 introduction of Mr. J. A. Kemp, which has proved a worthy companion to his Fort Monmouth and Violet Wonder. It is a huge spreading flower which can be grown to 12 inches with ease. The color is brilliant orange scarlet. You will no doubt say another red, but after all we have but few real satisfactory varieties of this color. In this giant we believe we have one which will be at the front rank for many years to come. It is an ideal grower and requires no thinning and but little disbudding.
 Roots \$10.00 Plants \$ 5.00
- Mrs. Alfred B. Seal**, (I. D.) This old rose beauty is one of the finest of the many good ones that the Western growers have given us. It is a big fellow, and the stems are perfect. The clear old rose color makes it most distinct.
 Roots \$10.00 Plants \$ 5.00

Decorative Dahlias, Continued

- Mrs. Carl Salbach**, (F. D.) A very fine pink Decorative held on extra long, strong stems.\$.50
- Mrs. Florence Coolidge**, (F. D.) A big wonderful red with just a slight bronzy sheen which adds to its fiery appearance. The blooms are large and flat and seem to stand right out. Long erect stems, free flowering, and a fine keeper when cut. Roots \$5.00 Plants \$ 2.50
- Mrs. George Relyea**, (I. D.) This is a companion variety to Laura Morris and makes the same vigorous growth, and dark heavy foliage. It is large size and a free bloomer. Color is a bronze pink with golden yellow at the base. Roots \$5.00 Plants \$ 2.50
- Mrs. Atherton**, (F. D.) A fine, yellow which we grow extensively for cut flowers. Size is large, stem is good, and it blooms freely\$.50
- Mrs. I. De Ver Warner**, (F. D.) We know of nothing better for an all around good variety than this big orchid shaded beauty. An old standby which still holds its own with the best of the new ones. Good grower and strong stems.\$.50
- Mordella**, (F. D.) A truly artistic dahlia of beautiful apricot buff, being particularly effective for house decorations. Flowers average 9 inches across and are held well above the foliage on extra long stems.\$.75
- My Irene**, (I.D.) This has something the appearance in formation of both Siskiyou and Wizard of Oz. The color is so unique as to be unusual, being a peculiar smoky shades of roses. We found it worked very nicely with the Gladiolus Rose Ash in decorations. Stems long and very stiff. Roots \$5.00 Plants \$ 2.50
- Purple Manitou**, (F. D.) A fine, large, clear, violet purple, being a sport of Le Grand Manitou\$.35
- Pride of Connecticut**, (F. D.) We use this extremely for cut flower work not only because of its pleasing color, but it is a fine keeper when cut, and the stem is quite adapted for this purpose without the use of wire. A dwarf grower and a most prolific bloomer. Color deep glowing pink with the reverse of each petal changing to a light amaranth pink. Certificate of Merit A. D. S.\$.50
- Purity**, (F. D.) Very reliable, free blooming white\$.50
- Queen Marie**, (I. D.) This was the choice of the Queen out of a number which were submitted to her on her visit. It is a strong grower with erect stems. Color is coral pink with salmon pink reflex shadings\$ 1.00
- Queen of the Garden Beautiful**, (F. D.) An immense flower of soft primrose yellow. One of the outstanding new California varieties. Roots \$1.50 Plants \$.75

Cut Flower Collection \$4.50

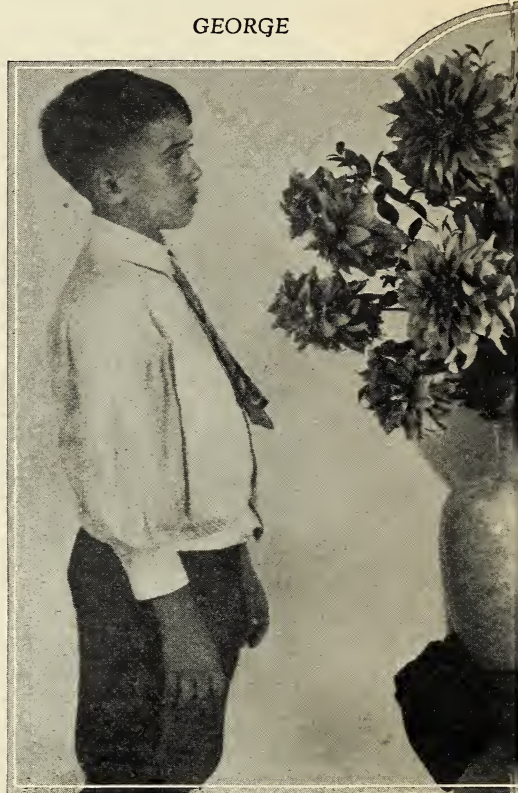
A sure-to-bloom collection which may be depended on for cut flower purposes. List Price \$6.50.

- Avalon
- George Walters
- Jersey's Beauty
- Jersey's Beacon
- Judge Marean
- Mrs. Carl Salbach
- Mrs. E. F. T. Smith
- Mrs. Edna Spencer
- Mrs. I de ver Warner
- Mrs. Atherton
- Shower of Gold
- Wesley Hayes

Hello Folks!

This is our Big New Dahlia "Miss Harriet H" too, if you have it in your garden.

GEORGE



Decorative Dahlias, Continued

- Ralph H. Blodgett, (F. D.)** Do you wish something new and entirely distinct from other varieties? If so, try this. The ground color is deep orange with a slight red suffusion and each petal is tipped white. Large size and free bloomer\$.50
- Rosa Nell, (F. D.)** A flower of an unusual shade of clear rose pink, size is large, and the stem is of the best,\$.50
- Sagamore, (F. D.)** This autumn shaded giant has become a great favorite since its introduction in 1925, and is always in demand in the cut flower market. Its bright gold color with just a faint tint of salmon make it indeed an outstanding variety. Needless to say, it is large and has a very good stem\$.75



"Doctor." We like it very much and are sure you will

FREDERIC



Six Glorious Beauties \$10.00

Six up-to-the-minute dahlias at a real bargain price. List Price \$16.50

Harry Mayer

Jane Cowl

Minnie Eastman

Ida Perkins

Spottswood Beauty

Spirit of St. Louis

The same six varieties in plants for \$6.00.

Sanhicans Beauty, (F. D.) The feature of this variety is the soft clear color, being perhaps best described as a clear pinkish orange. A fine clean grower and free in flowering.

Roots \$3.00

Plants \$ 1.50

Seal's Californian, (F. D.) The petals of this giant are very broad and flat with the addition of a tiny petaloid at the base. This tends to give the flower a most artistic appearance. The color is for the most part bright golden yellow with just a suggestion of bronzy rosy pink.

Roots \$5.00

Plants \$ 2.50



Decorative Dahlias, Continued

- Salbach's White, (I. D.)** An ivory white of good substance and keeping qualities. Blooms freely on good stems. A good white for any purpose. Roots \$ 1.50
- Snowdrift.** ..It is of the clearest white, stem is long and stiff, and is also a very good bloomer\$.50
- Shower of Gold.** Very free flowering rich gold color. Fine cut flower variety\$.50
- Spirit of St. Louis.** This Dahlia is a strong grower with a distinct and pleasing foliage. The bloom is very large and may best be described as American Beauty rose color. The plants are dwarf to medium in height, and bear the big flowers freely.
Roots \$3.00 Plants \$1.50
- Spottswood Beauty.** Quite similar in habit of growth to "Jersey Beauty," but yet entirely distinct. The color is Chatnay pink with a slight shading of yellow at the base of the petals. Not only a beauty, but its admirable habits make it very useful either as a cut flower or for exhibition.
Roots \$3.00 Plants \$ 1.50
- The Lemonade.** Good yellow Dahlias are now quite plentiful, but we think this is one which is distinctly worth while. It is a large, pale lemon color bloom which retains its size until the end of the season. Roots \$1:50 Plants \$.75
- The World.** The color of this new variety is an unusually rich, deep, rosy magenta overlaid garnet with silver shadings on the edge of the petals. Perfect full centers. Stems are strong and erect. Foliage leathery and repellant to insect injury. Roots \$5.00 Plants \$ 2.50
- The World's Best White.** Here is a variety that combines all the good habits that are so seldom found in pure whites. Plants are strong, thrifty growers and bear big blooms freely from early to late.\$ 1.00
- Thomas A. Edison, (F. D.)** A 1930 introduction which met with universal approval at the exhibitions. It is a gorgeous royal purple with a rich brilliant finish. Entirely distinct from any variety we know. The size is large and the petals have something of a staghorn formation. Has every desirable habit, including a heavy green foliage. Certificate of Merit A. D. S. Trial Gardens 1929.
Roots \$10.00 Plants \$ 5.00
- Thos. Hay.** A giant variety of clear line. The flowers are deep and full. The stems carry the huge flowers with ease, and the plants flower with surprising freedom
Roots \$2.00 Plants \$ 1.50
- Treasure Island.** One of the brightest autumn shade Dahlias we have seen. Color is bright apricot with gold, and rose suffusions and shadings. Bush growth is strong, branches

Decorative Dahlias, Continued

- readily from the ground giving five-foot stems. Flowers are held erect with full centers throughout the season.
 Roots \$5.00 Plants \$ 2.50
- Waldheim Sunshine, (I. D.)** A true deep yellow which will show and there is a rich golden suffusion around the beautiful full, high center. The bush growth is good, stems are long and strong. It is a sturdy grower and a free bloomer.
 Roots \$5.00 Plants \$ 2.50
- Watchung Sunrise, (F. D.)** This monster flower instantly attracts attention wherever shown. The stems are long and stand very upright. The blooms are placed directly on top of the stem with the long, shaggy petals twisting and turning until they meet at the back. The color is golden amber with a rose pink margin around the petals. A variety which is different, both in form and color.
 Roots \$3.50 Plants \$ 1.75
- Wesley Hayes, (I. D.)** A variety somewhat similar to Jersey's Beacon but a deeper red. For the most part it is a rich blood red tipped and edged golden yellow. Large and an excellent keeper and bloomer\$.75
- White Empress, (F. D.)** Another season has proved this an ideal white. To those who are looking for a satisfactory white that will prove a joy in the garden, or a prizewinner in the showroom we recommend this variety. It has every good habit, free flowering, large, erect stems.
 Roots \$4.00 Plants \$ 2.00
- White Glory, (F. D.)** The white seeding of Glory of New Haven was introduced by us in 1923, and still holds its place among the good whites. Rugged grower, an early bloomer, and large size.\$ 1.00
- Winfield Slocombe, (F. D.)** Very few varieties can compare with this for freedom of bloom. The plants are dwarf in growth and the large blooms seem to almost hide the ferny foliage of the plants. The color, too, is very attractive, being a brilliant golden orange, which is very alluring at all times but more especially under artificial light.\$.75
- Yale, (I. D.)** A combination of deep violet purple and white, with many variations in the whites markings, no two blooms being alike. Medium size, free flowering, but the stems are inclined to curl\$.50
- Yankee King, (F. D.)** Immense blooms of coppery rose and old gold. A very vigorous grower with stems of great length and perfectly rigid.
 Roots \$2.00 Plants \$ 1.00
- Yankee Queen, (F. D.)** A most fitting companion to Yankee King. It is likewise a most vigorous grower. The color is unusual being a true pink without any suggestion of lavender or cerise. Good size and free flowering.
 Roots \$5.00 Plants \$ 2.50

SEMI~CACTUS DAHLIAS

- Adda Patterson.** The blooms resemble a huge, shaggy chrysanthemum rather than a dahlia. The stems are long and rigid. The color is the clearest snow white, and it is a fine, free bloomer. Roots \$2.00 Plants \$ 1.00
- Alice Whittier.** A large, deep flower of perfect H. C. form. The color is deep primrose or sulphur yellow. The flower is evenly built with deep spike-like petals. The plants are tall and throw out the blooms freely on fine stems. Roots \$1.00 Plants \$.75
- Cigarette.** A Dahlia which attracts much attention because of its oddity of color. The ground color is creamy white, heavily edged brilliant orange or flame. Blooms are large, stem is long and rigid and is a very fine bloomer\$.75
- Colleen Bawn.** We have many giant varieties in the Semi-Cactus class, but this overtops them all. The immense size not alone commends it, for the color, too, is extraordinary, being a deep clear pink throughout without shadings of any kind \$ 1.50
- Daddy Butler.** The ground color is of the American Beauty rose shades of rosy carmine, being lighter on the reverse. Has a very strong, wiry stem and lasts well when cut\$.75
- Eagle Rock Jewel.** Cream overlaid cameo-pink (shell pink). Large flowers held on good stems, and a vigorous grower. Roots \$3.50 Plants \$ 1.25
- Edna Ferber.** A bloom of huge size, being deep and full with curled and twisted petals. The color is a brilliant coral shading to old-gold at the base of the petals. Roots \$2.00 Plants \$ 1.00
- F. M. Burdick.** A large flower of brilliant orange on a fine heavy stem\$.50
- Francis Lobdell.** A very stiff stemmed, low-growing variety. Color is mallow pink shading to white in center\$.75
- Geo. Walters.** The color is pinkish salmon shading to yellow at base. Plants are strong growers and have every good habit. Highly recommended\$.50
- Harry Sheldon, Jr..** Large, spreading blooms of delicate lavender pink shading to white in the center. The wonderful size and beautiful shadings of this variety make it a welcome addition to any exhibit.\$.75
- Jean Chazot.** Another fine flower of the popular Autumn shades. The color for the most part being golden bronze, with slight red suffusions. Blooms abundantly on heavy, wiry stems\$.50
- Kalif.** Pure scarlet, gigantic flowers produced on stout stems. An old variety, but one that can compare very favorably with the latest introductions\$.50

Semi-Cactus Dahlias, Continued

- Mephestophles.** A dahlia that differs from the ordinary run by the fact that it has but very few lateral shoots. The stems are extremely long and very erect. The flowers are very large and are placed right on top of the stem. Color is ruby red with a golden tip on each petal.\$.50
- Mrs. Ethel F. T. Smith.** The color is creamy white, shading to lemon yellow in the center. A profuse bloomer on long, strong stems. Large spreading flowers\$.50
- Minnie Eastman.** A 1929 introduction which we can most highly recommend. It is most decidedly something different. The brilliant flame color instantly catches the eye, and the long cane-like stems, together with its fine healthy foliage, and free flowering habits, make up the sort of a Dahlia which we all like to see. Color is flame with an undershading of deep yellow. Roots \$4.00 Plants \$ 2.00
- Nibelungenhort.** Immense flowers, 7 to 8 inches across. Color rich golden apricot suffused old rose. Very free\$.50
- Papillon.** Old rose with golden shadings. The size is large, and it is a wonderful bloomer on good stems\$.75
- Paradise.** This is a very much improved Geo. Walters. The color is a bit deeper, being old rose suffused with gold. Has a very fine, erect stem\$.75
- Peppermint Candy.** Dahlia fanciers are always looking for something extraordinary and unusual. The name of this new semi-cactus gives quite a unique description of this odd variety which is creamy white with many crimson stripes and splashes. It is large size and a very free bloomer, but we regret to say that the stem is not heavy enough to carry the large blooms\$ 1.00
- Rollo Boy.** This gorgeous big golden yellow has become one of our standard varieties, both for cut flowers and exhibition. Fine stems and a prolific bloomer\$ 1.00
- Roycroft.** A good size bloom of rich gold color. Blooms freely on fine stem, making an excellent cut flower\$.50
- Signoor.** Another splendid importation from Europe. The color is rich crimson and the blooms stand on top of a perfectly straight stem. The flowers are made up of many long petals which are extremely twisted and interlaced\$ 1.50
- The Grizzley.** A big flower of deep maroon, a free bloomer with long, stiff stems\$.50
- T. G. Mathias.** A big rich maroon, having the finest possible stems. Fine form, and a very pretty heavy fern foliage\$ 1.00
- Wodan.** Salmon rose shading to old gold. Bold, large but not coarse flowers\$.50

CACTUS DAHLIAS

- Ambassador.** Undoubtedly the best variety we have of this class. Has many fine, large blooms on long, erect stems. The color is soft yellow with shadings of salmon pink\$.75
- Ballet Girl.** A Cactus of the "Fellows" type, being large size and remarkable free blooming on good stems. The ground color is orange, often tipped and marked with white\$.50
- Countess of Lonsdale.** By an insistent demand we are returning this old favorite to our list. For many years before the advent of the large flowered types it was a standard cut flower. Color salmon pink. A most prolific bloomer\$.35
- Exhibitor.** A variety for exhibition. Large long raking petals, and the plants produce the large flowers in surprising numbers. Color is rich crimson. A recent importation\$ 1.00
- Farncot.** This little purple and white tipped variety will produce more blooms per plant, and last longer, than any other variety we know Plants \$.75
- F. W. Fellows.** Bright orange scarlet. Flowers freely produced and are of exceptional size. Very wiry\$.50
- Gladys Bates.** Heavy Blooms of incurved petals of tan with reverse of rose. Perfect form, closed center, long stems, and a profusion of blooms\$.50
- G. H. Barlow.** One of the largest Cactus Dahlias. Perfect incurved form freely produced. Color is clear bright orange. Won the prize for us for the largest Incurved Cactus at the 1930 A. D. S. show.\$ 1.50
- Guardian.** Prolific, strong stem, free blooming crimson. Nothing better in a red cactus\$.50
- Kendal Glory.** Here is a new introduction which did well at the A. D. S. trial garden in 1929 despite the very difficult conditions. It is a huge spidery cactus with the petals twisted and interlacing. The color is rose red with an appearance of golden sheen as the flower develops.....\$ 3.00
- Meridian.** It is not often the American grower is able to offer a cactus of the true slim petal type. This variety has the added advantage over the British productions, it having erect stem. The colors are extremely delicate being creamy pink, deepening at the tips to a soft blush\$ 1.00
- Mrs. Edna Spencer.** This is a Dahlia which can be particularly recommended for cutting as the flowers have wonderful keeping qualities, and stand erect on the best of stems. The color is also very pleasing, being a delicate orchid, shading to white\$.50
- Pierrot.** Deep amber, boldly tipped white. An exceptionally large and striking variety\$.50

Cactus Dahlias, Continued

- Regent.** A lovely clear pink incurved variety which we can highly recommend. Prolific flowering, good size and stem\$ 1.00
- Silverado.** One of the largest of this type, having many long incurving petals. Color is white in the center shading to a silvery lavender. Grows tall and blooms freely.
 Roots \$2.00 Plants \$ 1.00

PEONY DAHLIAS

- City of Portland.** There is a great demand for large flowers and this is large enough to satisfy most anyone. The color is a fine, clear yellow, and the stems are long and stiff.....\$.75
- Mrs. Thos. Bush.** A very early and free flowering variety which we use for early cut flower demands. Long stems. Color creamy yellow overlaid peach pink\$.50
- Holman Hunt.** A fine free blooming rich crimson which can always be relied on for cut flowers\$.50
- Uncle Sam.** Here is a giant bloom which you surely want. It is a long stiff stemmed variety of brilliant copper color, and full deep formation. We believe it to be the largest Peony grown\$ 1.00

BALL DAHLIAS

- King of Shows.** Deep butter yellow of a solid color throughout, Every petal is most perfectly quilled and uniquely formed.\$ 1.00
- Maud Adams.** A perfect snowball with faint lavender blush on tip of petals. Very desirable for cut flowers\$.35
- Miss Helen Hollis.** A gigantic deep scarlet flower. The best of the red Show Dahlias\$.35
- Mrs. C. D. Anderson.** This might be called an improved Cuban Giant. It is a rich purplish crimson, and bears large flowers freely on the best of stems\$.50
- Mrs. Mary Bowman...** An exquisite shade of deep golden yellow with the reverse of petals slightly tinged magenta. A strong thrifty grower in every respect\$.50
- Silva Quarta.** This huge lavender ball attracted much attention in our garden. The size not only is large, but is composed of innumerable tightly quilled petals, one inside of the other...\$.50
- Supt. Amrhyn.** This new pink invariably wins the prize when exhibited in the show classes. It is of good size, will last extremely well when cut and has a fine, stiff stem\$.75
- Vivian.** A very beautiful and a favorite Show Dahlia. The base of the petals is white distinctly edged carmine\$.25
- Yale Bowl.** A waxy golden bronze bloom, perfectly quilled, and holds its center until the end of the season\$.75
- Yuban.** The best bi-color of this type. Base is tan with many stripes and splashes of red. Large size and straight stems ..\$.75



Select

POMPON

DAHLIAS

Aimee, Small, free flowering bronze	\$.35
Amber Queen. Fine, deep amber with apricot suffusions25
Bantam. Brownish red, small, perfect form on long stems50
Belle of Springfield. Very diminutive bright red35
Bronze Beauty. Rich golden bronze25
Clarissa. Primrose tipped pale lavender50
Darkness. Deep maroon. One of the darkest we have25
Dee Dee. Lilac. Perfect waxy flowers50
Etta. Crimson with deep white edges35
Glow. Salmon-cerise. An unusually fine variety of this type50
Goldie. Pure gold color25
Ideal. Clear deep yellow25
Jessica. Amber and salmon with a tint of red25
Joe Fette. Glistening pure white25
Johnnie. Maroon-crimson, nicely formed50
Kitty Barrett. Golden yellow, edged reddish purple50
Lassie. Yellow base with rose band and tip on each petal35
Little Belle. Light lavender, free flowering35
Little Beauty. A most popular bright orange35
Little David. Deep orange. A good one for cutting or exhibition50
Little Herman. Crimson blotched and tipped white35
Little Jennie. Primrose yellow25
Little Jewel. Miniature Decorative. An attractive little variety of the same soft pink shadings as "Delice." Grows only about two inches in diameter, a wonderful keeper when cut, and can be used to great advantage where a large flower is not desirable	\$.50
Little Mabel. Amber shaded apricot25
Little Mary. Almost black. Very small and regular form50
Little Prince. Crimson, each petal tipped white25

Pompon Dahlias, Continued

Little Red Riding Hood. A new introduction for 1931 from the garden of Mr. A. W. Davidson. The name gives a very clear description of it. It is a rich, but yet very brilliant red, has long stems and blooms most freely. Size is medium 1.00

Nerissa. Fine clear pink. An outstanding variety of this type
Plants50

Raider. Light creamy yellow, with the faintest pink edge50

Pride. Deep, rich red35

Sunset. A nice exhibition variety of bright orange35

Tom Thumb. Garnet red. The smallest variety in this class50

Tommy Keith. Cardinal tipped white35

Yellow Gem. Fine canary yellow with good stems25



SINGLE DAHLIA

Prince de Bulgaria. We do not particularly favor singles, but the color combination of this makes it a variety for which there is a great demand. It is scarlet for the most part with tips and stripes of white. Extra free flowering and fine, ferny foliage\$.50

DAHLIA SEED

The growing of Dahlias from seed is very fascinating, for you never know what a seed will produce and each plant is a new variety. The seed should be planted in the house or a cold frame during late March or early April and transplanted to the garden when the weather is suitable, usually about the middle of May. We have a limited amount of our own seed which we can supply at 1.00 per package.

We have also made arrangements with a well known California grower for a limited amount of Western grown seed which we can also supply at \$1.00 per package.



GLADIOLUS

Gladiolus are a most satisfactory mid-summer flower. They will bloom under very adverse conditions, but likewise will quickly respond to good care.

\$.10 each \$1.00 per dozen

Excepted where noted.

A. B. Kunderd. Superb new pink.

Albania. Glistening pure white.

Alice Tiplady. One of the best orange color.

Byron L. Smith. Soft lavender with yellow throat.

\$.15 each \$1.50 per doz.

Crinkles. Peach blossom pink, ruffled.

Fern Kyle. Large ruffled cream.

Giant Nymph. Tall, light pink, creamy throat.

\$.15 each \$1.50 per doz.

Golden Butterfly. A strong growing semi-prim of large size and deep golden yellow color.

Louise. Soft clear lavender.

Los Angeles. Known as the cut and come again Glad., as the side shoots also produce flowers. Color grenadine pink.

\$.15 each \$1.50 per doz.

Gladiolus, Continued

Mary Pickford, Creamy white.

Mona Lisa. Pale rose pink. Ruffled.

Mrs. F. Pendleton. Rose pink with crimson blotch.

\$.07 each \$.75 per doz.

Mrs. Dr. Norton. Creamy white, pink edges.

Mrs. F. C. Peters. Rose lavender, ruby throat.

Mrs. Leon Douglas. Begonia rose, striped scarlet. Very large

and tall grower\$.15 \$1.50 per doz

Mrs. H. Bothin. Ruffled rose pink with white edge.

\$.15 each \$1.50 per doz.

Mrs. Newall Vanderbilt. Large, deeply ruffled salmon with yellow

throat\$.15 each \$1.50 per doz.

Prince of Orange. Attractive bright scarlet with white spot in

the throat\$.07 each \$.75 per doz.

Richard Diener. Lovely large salmon with yellow throat. \$

\$.15 each \$1.50 per doz.

Rose Ash. An unusual ashes of roses color.

\$.15 each \$1.50 per doz.

Scarlet Wonder. Deepest orange red.

General Mixture of all varieties including Primulinus Hybride,
.50 per doz.

Choice Mixture of the best large flowered varieties 1.00 per doz.

\$5.00 per 100. 25 or more at 100 rate.

SPECIAL OFFERS

To those who are not conversant with the various varieties, I recommend the following collections:

If you wish something different than is mentioned below, advise me of your wishes and the amount you desire to spend, and I will be glad to make the selection for you. If the selection is left entirely to me I will guarantee at least 25 per cent additional value at catalogue rates.

For \$1.25 I will send 12 roots, unnamed; 30 for \$2.25. These are all first class varieties that have become mixed in handling.

For \$2.75 I will send 12 good garden and exhibition varieties, my selection, no two alike.

For \$2.75 I will send 12 Pompons, my selection, no two alike.

For \$10.00 I will send 12 standard garden and cut flower varieties, all of the large flowered types which sell for \$1.00 each or more. We particularly recommend this collection to the beginner.

Dahlia Growers Supplies

DAHLIA LABELS. 2 ½-inch copper wired, painted one side. The same as we use in our own garden. Not postpaid unless shipped with a root order.

\$.25 per 50

\$.40 per 100

\$2.85 per 1,000

DAHLIA AND PRUNING KNIVES

These knives are made by Miller Bros., one of the oldest and best known manufacturers of cutlery in the U. S. A. and are guaranteed by them in every way.



No. 1041—As illustrated above, 6 inches long when open. Brass lined with ebony handle. An excellent knife at a very low price. We keep several of these around as they are most convenient for cutting either roots or blooms.

Price 60c postpaid



No. 3710—A handy knife for any purpose. Two blades with stag handle, 6 3-4 inches long when open. The large blade is very strong and particularly adapted to dividing roots.

Price 85c postpaid



No. 1008—An extra heavy knife designed for pruning. 7 1-8 inches long when open. Redwood handle.

Price 80c each postpaid



This emblem is your protection

Conditions of Sale. We exercise care to ship only first-class stock, but give no warranty, expressed or implied, and will not in any way be responsible for the results of planting or forcing of any seeds, bulbs, roots or tubers sent out by us. We are anxious to satisfy all of our customers and will gladly make replacement of any article that does not prove true to name or does not arrive in good growing condition. Please notify us at once if shipment does not arrive in satisfactory condition. If the purchaser does not accept the goods on these terms, no sale is made, and they must be returned at once.

ORDER SHEET

Issued by

**C. LOUIS ALLING, DAHLIA SPECIALIST
WEST HAVEN, CONNECTICUT**

FILL ALL THESE BLANKS

Date Amount inclosed

Your Name

(Write it plainly. Ladies will please use the prefix Miss or Mrs.)

P. O. Street

State County

Shall I substitute for any that are sold out?

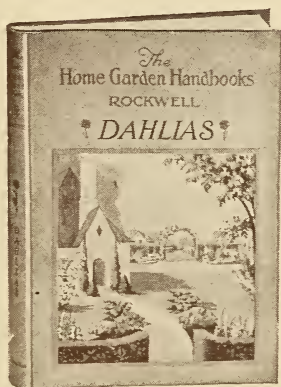
About what date do you want them shipped?

NO SHIPMENTS MADE UNTIL AFTER APRIL 1st

HOW	NAME OF VARIETY	PRICE
MANY		
Roots Plants		

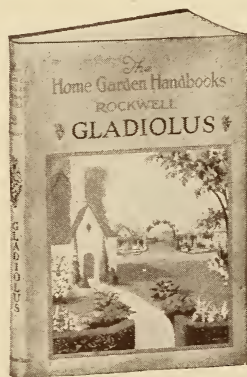
*Will you kindly write above the names of a few of your friends
whom you think would be interested in this catalogue. We
will add an extra root, of a good variety, for this favor.*

THE BOOK OF BULBS, by F. F. Rockwell... Will help you grow bulbs successfully for spring, summer, fall, and winter flowering, inside and outside your home. The information in this book tells, and its pictures show how to grow 70 different bulbous plants including tulips, daffodils, hyacinths, lilies, gladiolus, dahlias, peonies, irises, begonias, cannas, bloodroots, and dozens of others. Recommended as the most complete and newest guide to bulb growing. 187 illustrations, 264 pages.—\$3.00 postpaid.



DAHLIAS, by F. F. Rockwell.

There has been for some time a demand for a real practical book on growing Dahlias, selling at a popular price. This 80-page book of Mr. Rockwell's supplies this want on a most interesting manner. In contains 65 illustrations and much helpful information for the amateur. \$1.00 postpaid.



GLADIOLUS, by F. F. Rockwell.

Recommended as "the best brief guide on gladiolus growing." It tells how to plant, fertilize, and cultivate; how to grow from seed or bulblets; how to harvest and cure; how to handle for cut flowers; and every other detail needed for success with this popular flower. 45 illustrations, 79 pages.—\$1.00 postpaid.

HORTUS, by L. H. and E. Z. Bailey. A real dictionary of plants with an immense amount of reliable information about every ornamental, fruit, and vegetable cultivated in North America, arranged alphabetically with common names cross-referenced. Gives comprehensive information on culture, growing habit, hardiness, uses, soil requirements, transplanting, propagation, native habitat, and the range of cultivation of each plant with illustrated articles on different types of horticulture and cultural methods. 652 pages, 35 illustrations, fablekoid,—\$10.00 postpaid.

24-
Jan-
190



DECORATIVE DAHLIA
"Spirit of St. Louis"