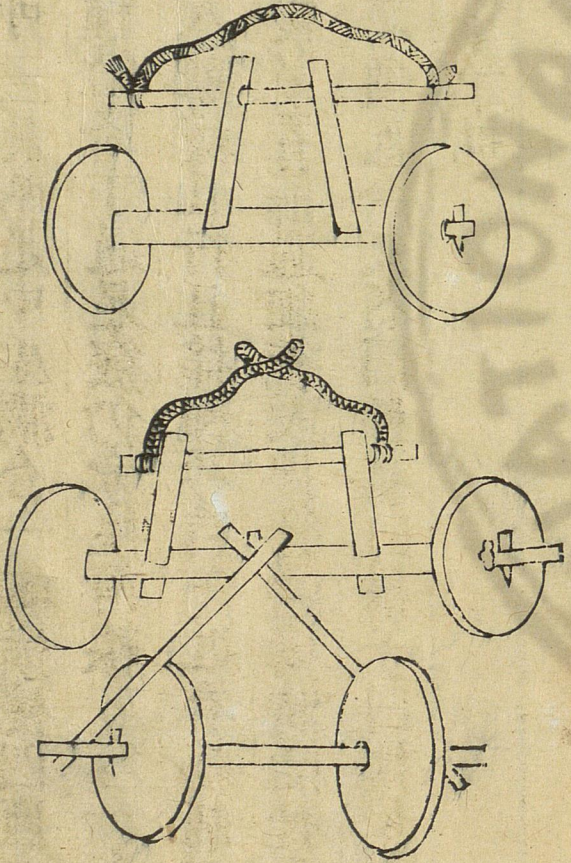
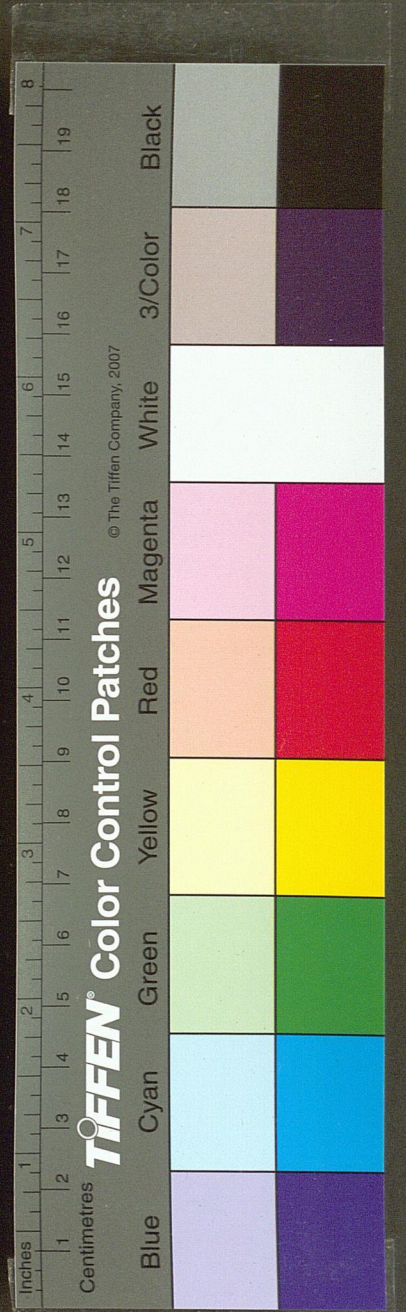


耨落篲車下種器也通俗文曰覆種曰耨一云耨犁其制
兩柄上彎高可三尺兩足中虛濶合一瓏橫桃四匣中置
耨斗其所盛種粒各下通足竅仍旁挾兩轅可容一牛用
一人牽傍一人執耨且行且搖種乃自下近有創制下糞
耨種於耨斗後另置篩過細糞或拌糞沙耨時隨種而下
覆於種上尤巧便也今又名曰種時曰耨子曰耨犁習俗
所呼不同用則一也

車 砵

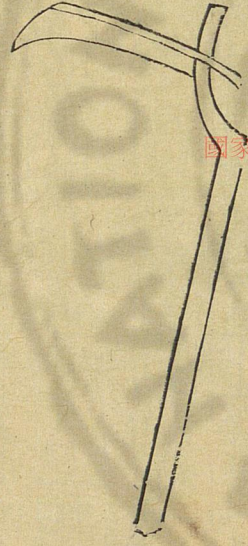


國家圖書館 NATIONAL CENTRAL LIBRARY TAIWAN, R.O.C.

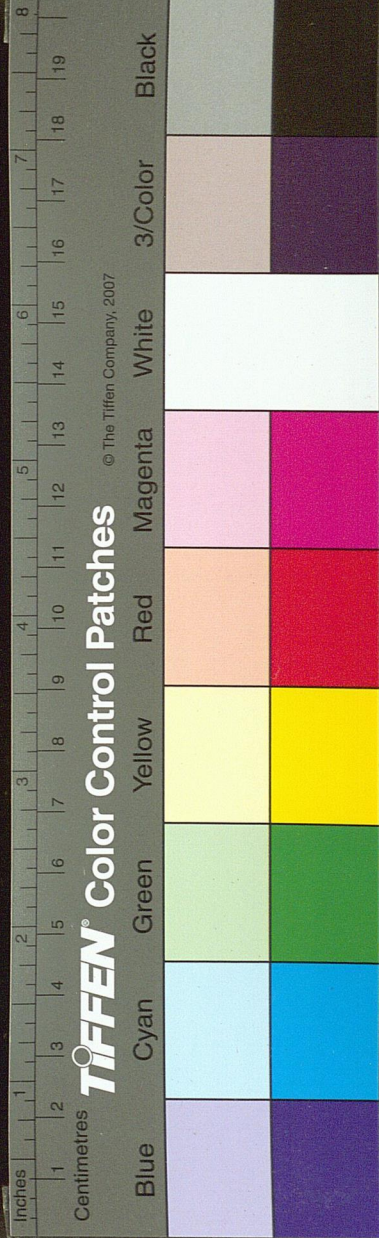


砵音砵車砵石砵也。以木軸架砵為輪，故名砵車。兩砵用一
 牛，四砵兩牛力也。鑿石為圓徑，可尺許，窳其中，以受機括。
 畜力輓之，隨耨種所過，泔壠碾之，使種土相着，易為生發。
 然亦看土脉乾濕，何如用。有遲速也。古農法云：耨種後用
 捷則壠滿，工實又有種人足躡壠底，各是一法。今砵車轉
 碾溝壠，特速。此後人所創，尤簡當也。

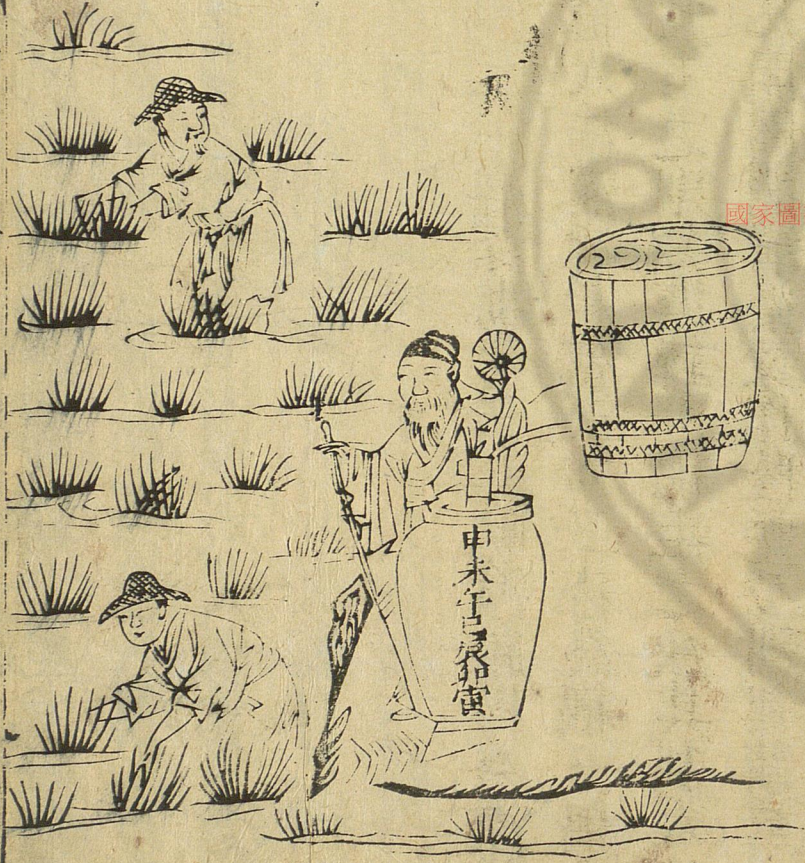
刈刀



刈刀穫麻刃也。或作兩刃，但用鎌，似塔切旋插其刃，俯身
 控刈，取其平穩。便易。北方種麻頗多，或至連頃，另有刀工
 各具其器，割刈根莖，剝削稍葉，甚有速効。齊民要術曰：麻
 勃如灰，便刈，葉欲小，縛欲薄，獲欲淨。此刈麻法也。南方惟
 用梭，取頗費工力。

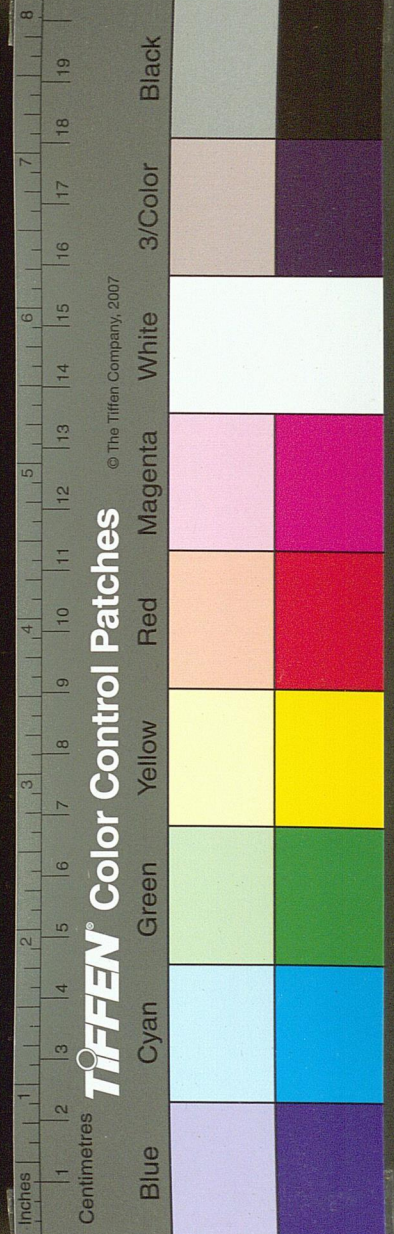


田 漏

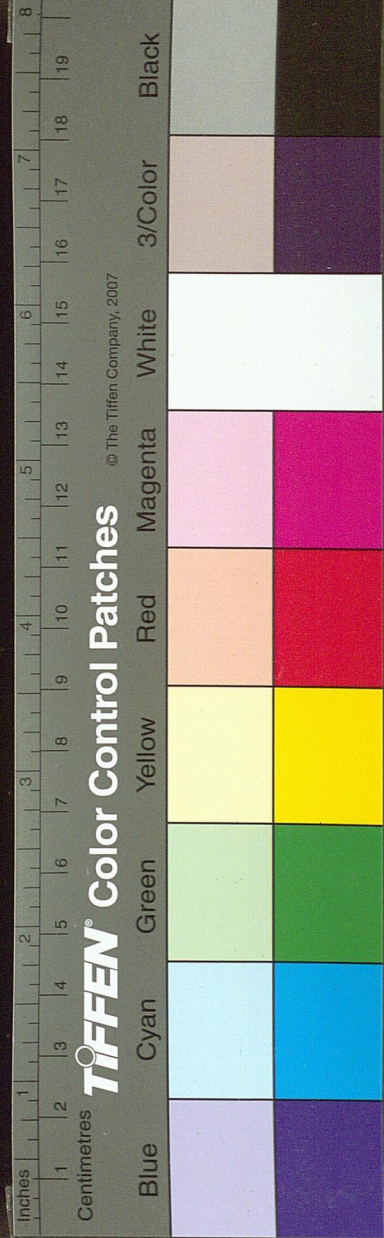


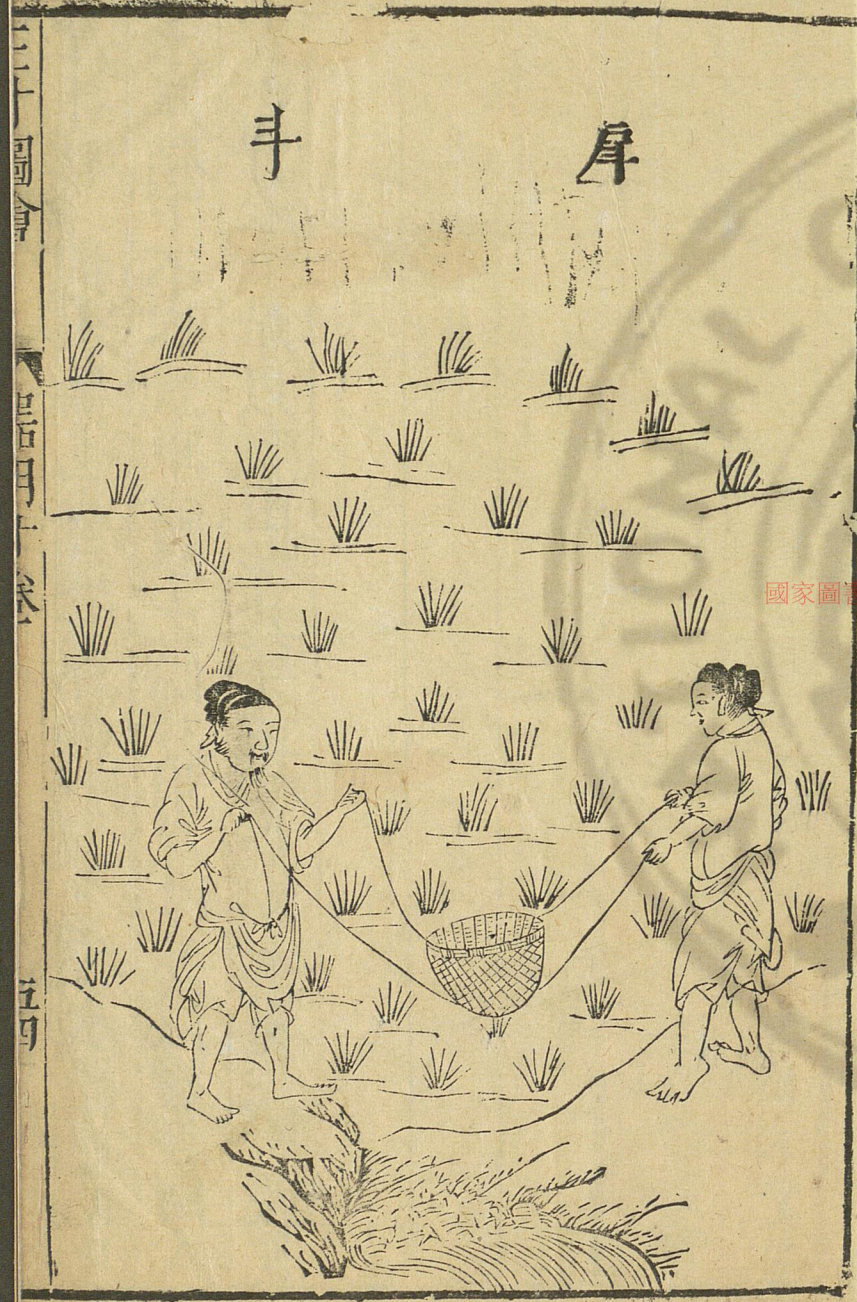
濬鍤 濬思潤切與浚同 濬深也書云濬畎澮距川今濬鍤
鍤胡瓜切鎔也
 卽此濬也周禮匠人爲溝洫距廣五寸二距爲耦一耦之
 埜廣尺深尺以此考之則知濬鍤卽耦距之法其制大倍
 常鍤鍤亦稱是凡開田間溝渠及作陸塹乃別制箭犁可

濬 鍤



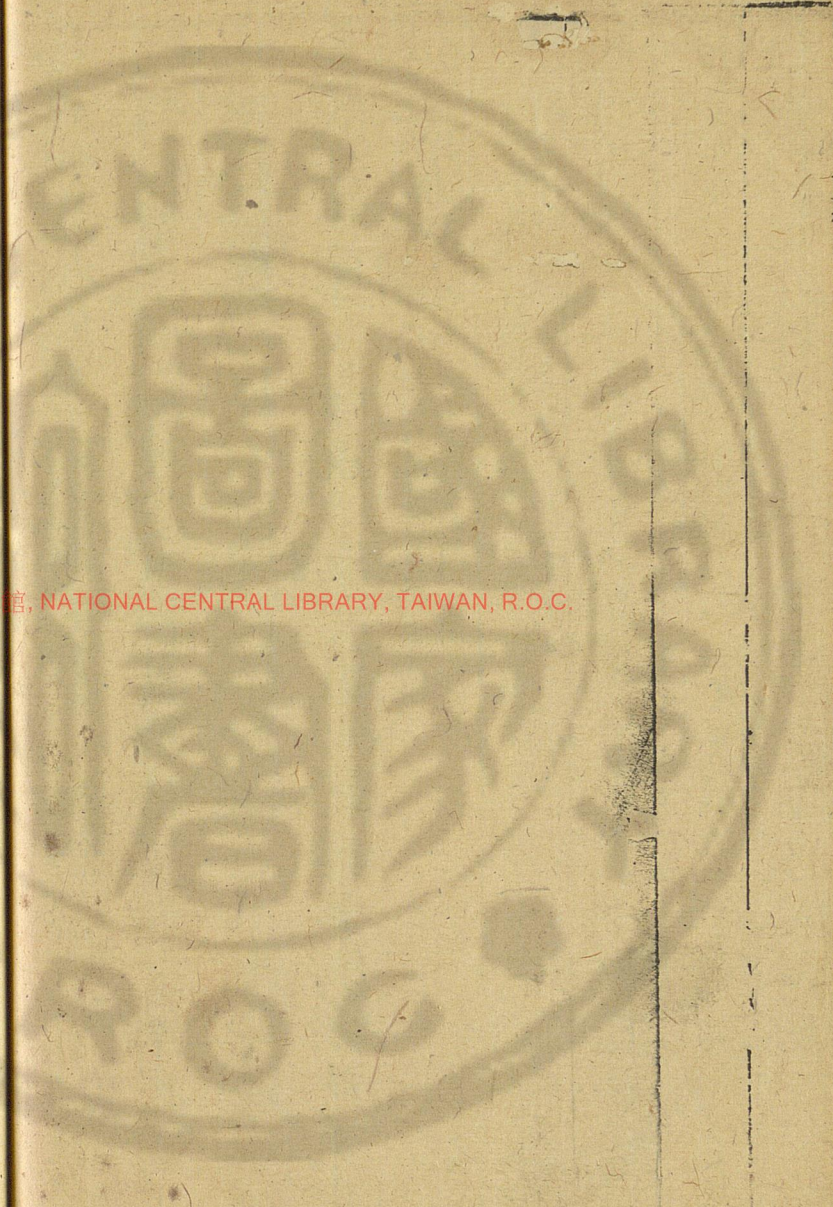
田漏田家測景水噐也凡寒暑昏曉已驗於星者占候時
刻惟漏可知古今刻漏有二曰稱漏曰浮漏夫稱漏以權
衡作之殆不如浮漏之簡要今田漏槩取其制置箭壺內
刻以爲節既壺水下注則水起箭浮時刻漸露自己初下
漏而測景焉至申初爲三時得二十五刻倍爲六辰得五
十刻畫之於箭視其下尚可增十餘刻也乃於卯酉之時
上水以試之今日午至來日午而漏與景合且數日皆然
則箭可用矣如或有差當隨所差而損益之改畫辰刻又
試如初必待其合也農家置此以揆時計工不可闕者大
凡農作須待時氣時氣既至耕種耘耔事在晷刻苟或違
之時不再來所謂寸陰可競分陰當惜此田漏之所以作
也茲刊爲圖譜以示準式梅聖俞詩云占星昏曉中寒暑
已不疑田家更署漏寸晷亦欲知汗與水俱滴身隨陰屢
移誰當哀此勞往往奪其時



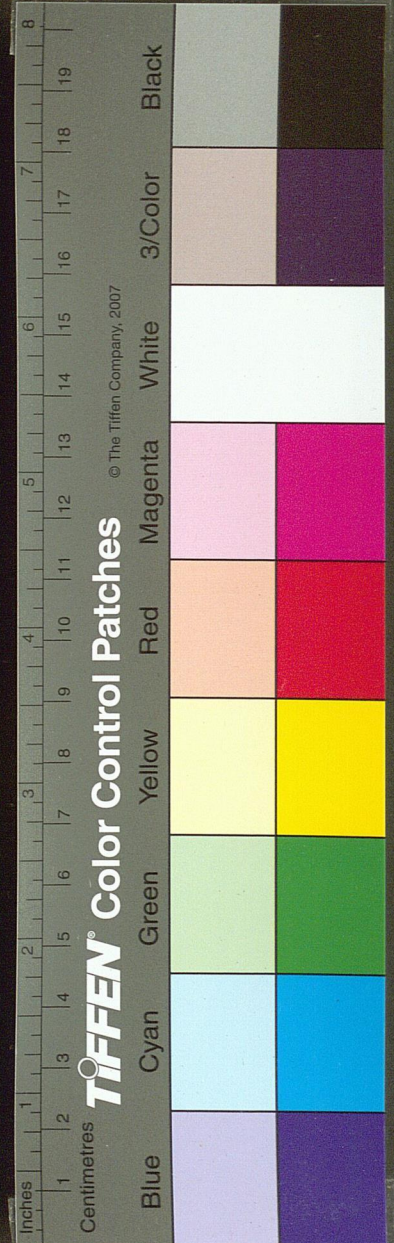


五十四

國家圖書館, NATIONAL CENTRAL LIBRARY, TAIWAN, R.O.C.

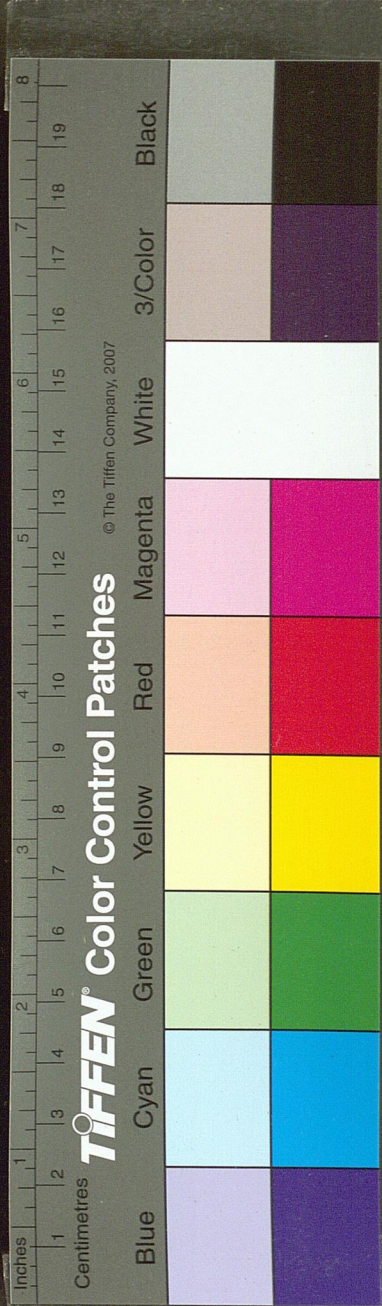


三才圖會
卷之十
農器

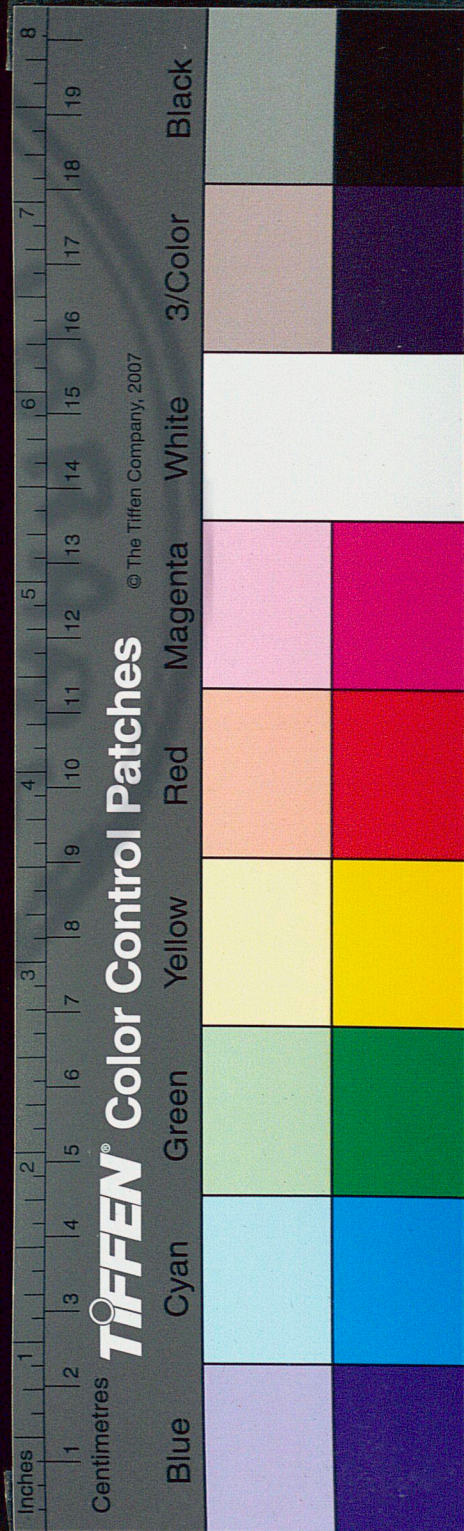


國家圖書館, NATIONAL CENTRAL LIBRARY, TAIWAN, R.O.C.

戽斗戽候切挹水器也唐韻云戽上與切也挹水器挹也凡水岸稍下不容置車當旱之際乃用戽斗繫以雙縵兩人掣之挹水上岸以溉田稼其斗或柳筲或木鑿從所便也



國家圖書館, NATIONAL CENTRAL LIBRARY, TAIWAN, R.O.C.





三才圖會

器用十一卷

聖朝名明父王思義續集



蓀

蕒

籃

箕

砧杵

斧

鋸

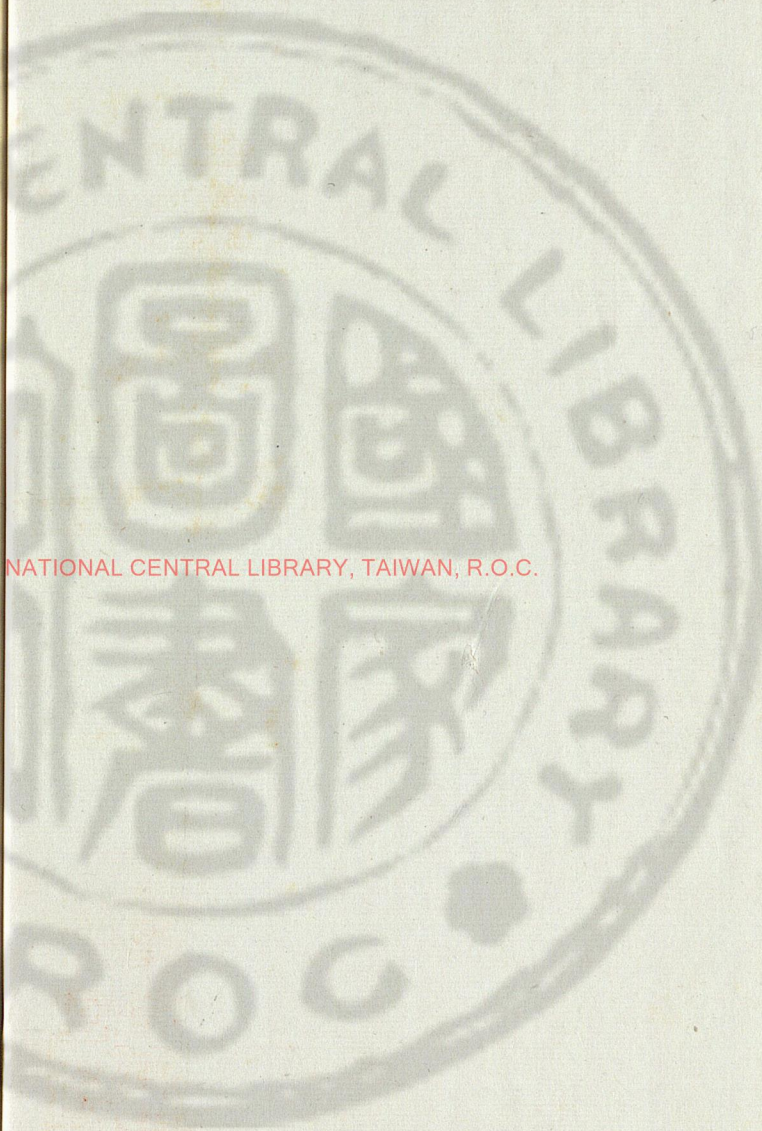
斲

礪

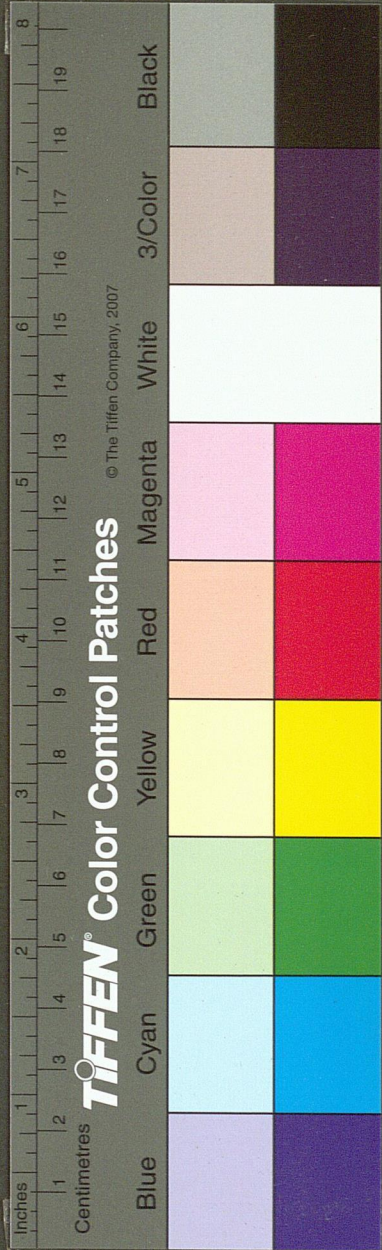
種籩

曬槃

攢稻籩



國家圖書館, NATIONAL CENTRAL LIBRARY, TAIWAN, R.O.C.



穀虛

穀杷五

杓

平板

輓軸

秧彈

杖二

麥笕

喬杆

禾鉤 搭爪

禾檐

連耨

刮板

篩穀笊

臂篝

田盪

耒耜

犁

方耙 人字耙

抄

瓦竇

撻

擾

瓠種

礮毒

石礮 礮 又

耕索

耕繫 牛軛

秧馬

牛衣

呼鞭

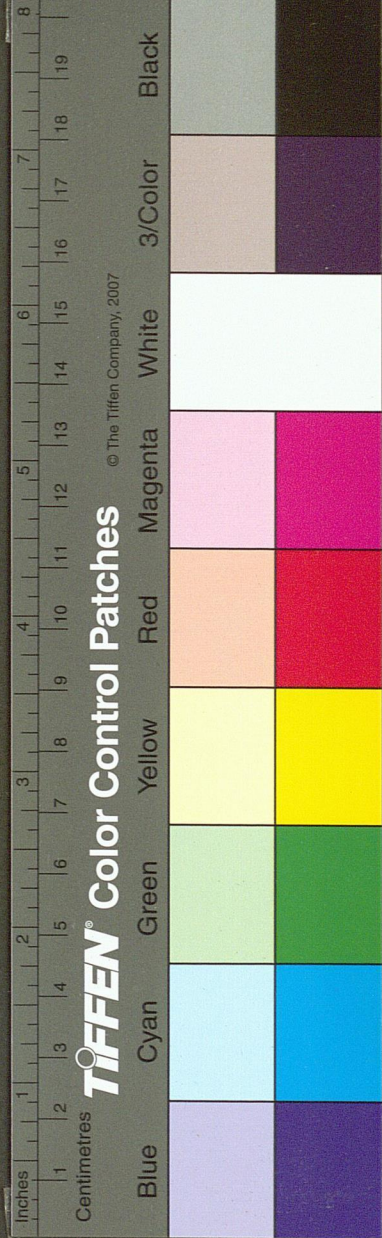
鑊

甬

碓

鋒

鐵搭



國家圖書館 NATIONAL CENTRAL LIBRARY, TAIWAN, R.O.C.

長鏡

鏡
鐔

剗

錢

耨

耨
鋤

鏟

耘
盪

翳
鏟

木杓

又杓三

鏹

剗

鑄

耨
鋤

耨
鋤

耘
爪

銍
艾

推
鏟

鏢

栗
鑿

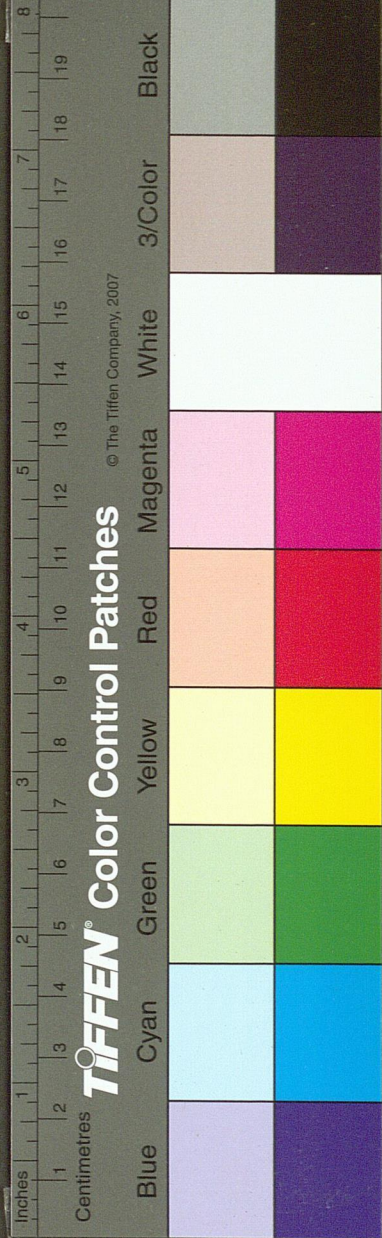
薊
馬

撥

剗
刀

畚

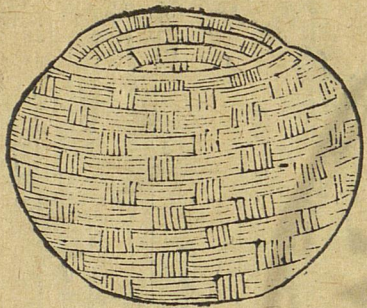
國家圖書館, NATIONAL CENTRAL LIBRARY, TAIWAN, R.O.C.



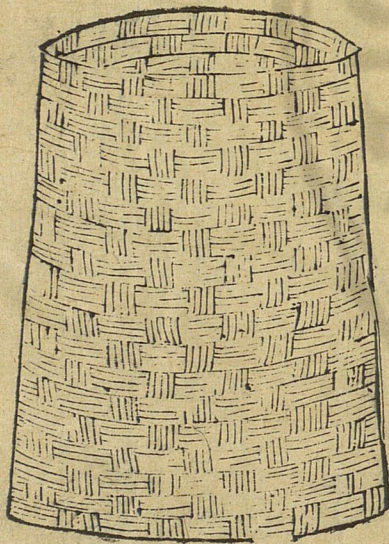
三才圖會

卷

蓀



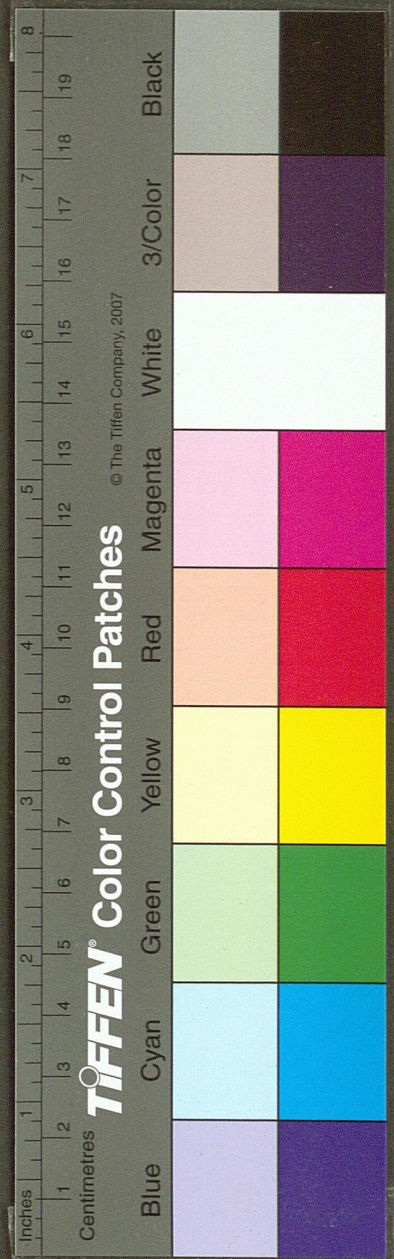
簍



國家圖書館, NATIONAL CENTRAL LIBRARY, TAIWAN, R.O.C.

三才圖會

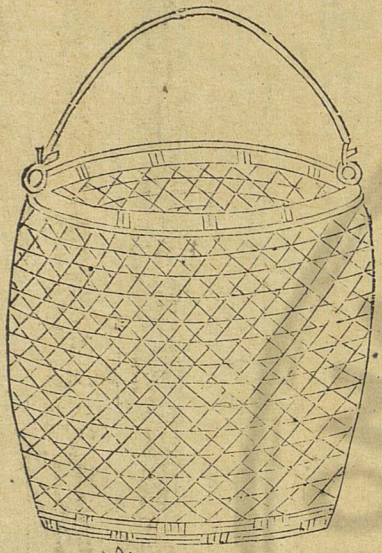
卷



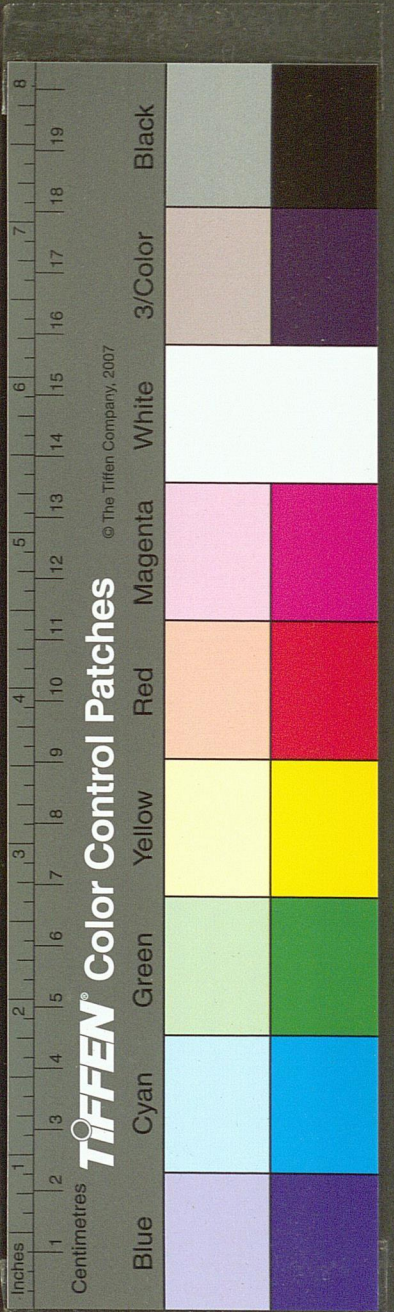
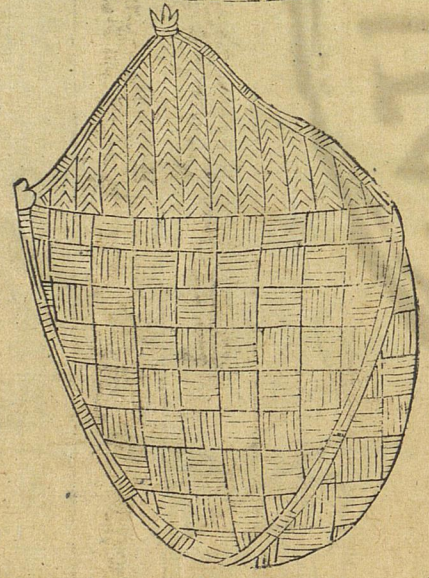
蓆徒吊切字從草從條取其象也即今之盛穀種器語曰丈人以杖荷蓆蓋蓆器之小者可杖荷之既農隱所用必為盛穀器也

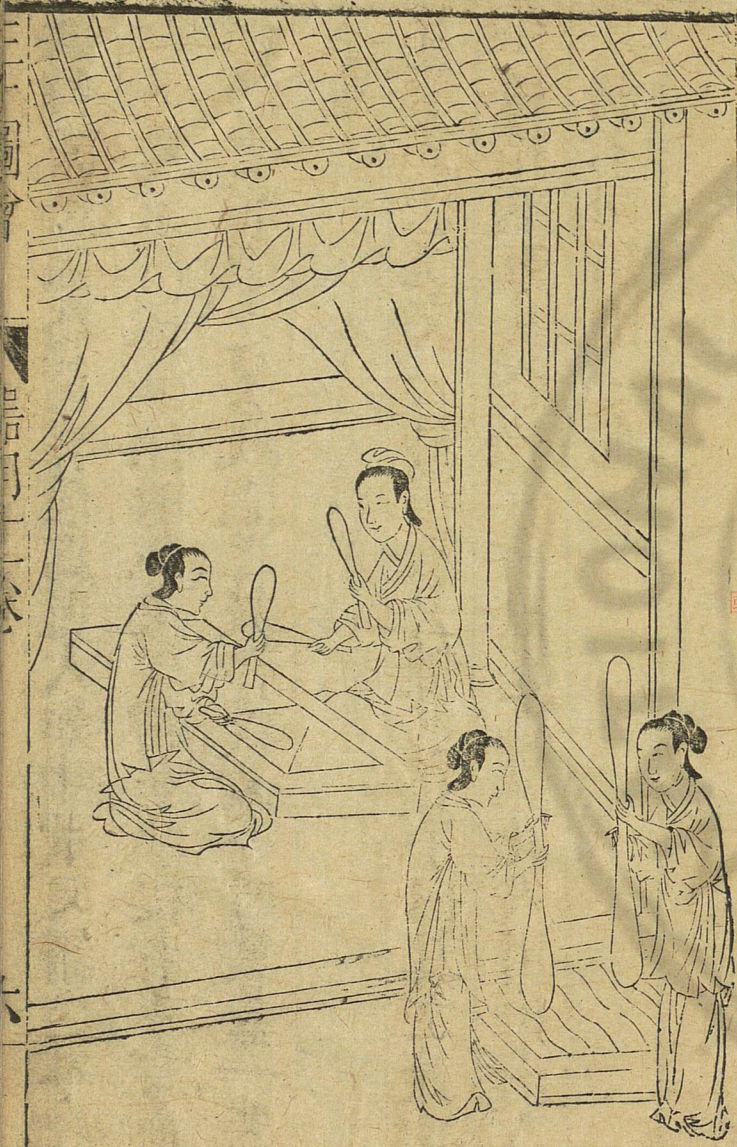
蓆草器從草貴聲論語有荷蕢而過孔氏之門者古文作與象形盛穀器集韻作字從竹舉土籠也

籃



箕

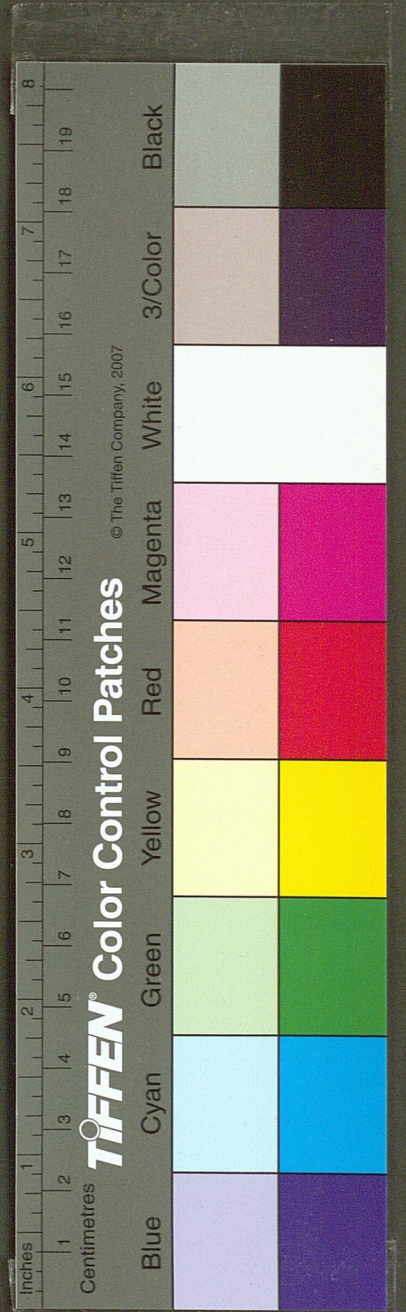




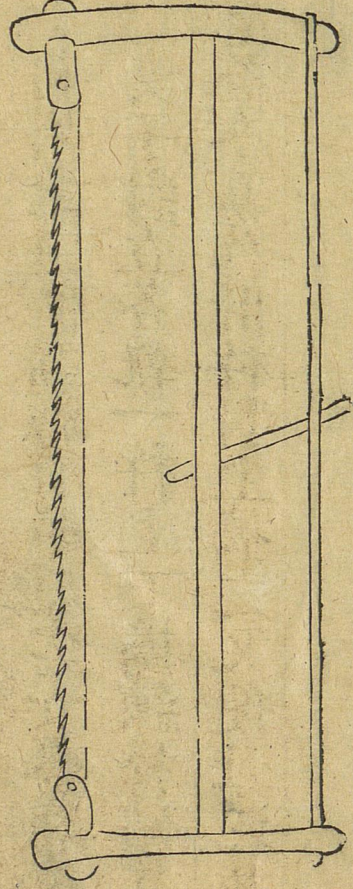
砧杵

籃竹器無係爲筐有係爲籃大如斗量又謂之筥卽鼎切箸
桑鼎切農家用採桑柘取蔬菓等物易擊提者方言籠南楚
 江沔之間謂之筥或謂之筥郭璞云亦呼籃蓋一器而異
 名也
 箕簸箕也說文云簸揚米去糠也莊子曰箕之簸物雖去
 粗留精然取其終皆有所除是也然北人用柳南人用竹
 其制不同用則一也

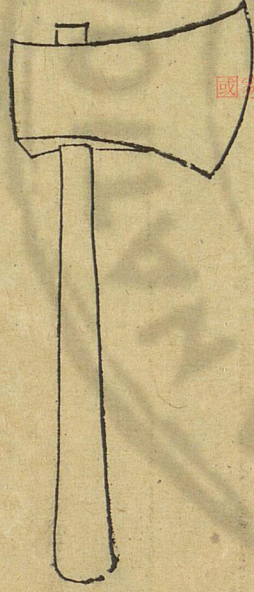
國家圖書館, NATIONAL CENTRAL LIBRARY, TAIWAN, R.O.C.



鋸

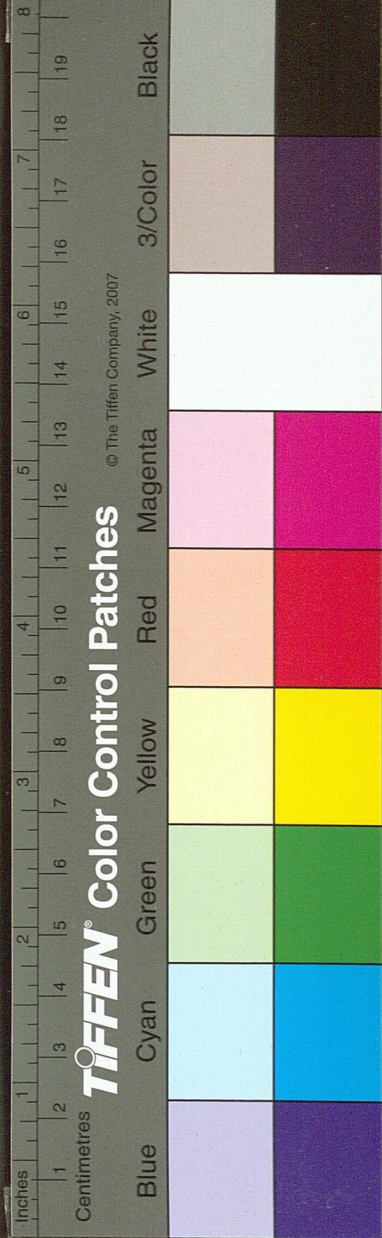


斧

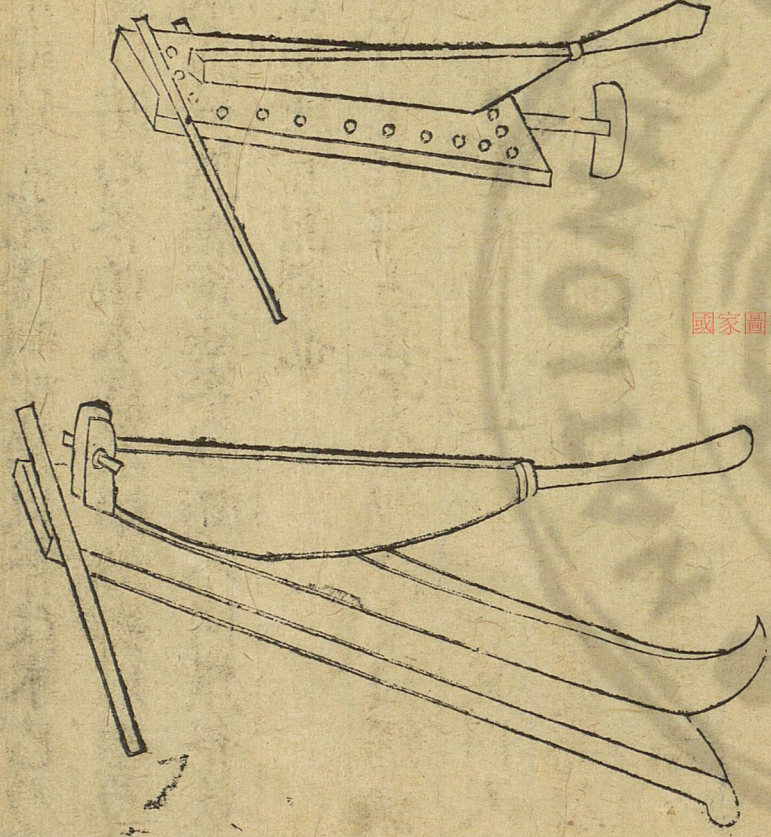


砧杵搗練具也東宮舊事曰太子納妃有石砧一枚又搗
亦作搗衣杵十荊州記曰稭歸縣有屈原宅女媭廟搗衣石
 猶存蓋古之女子對立各執一杵上下搗練於砧其丁東
 之聲互相應答今易作卧杵對坐搗之又便且速易成帛
 也

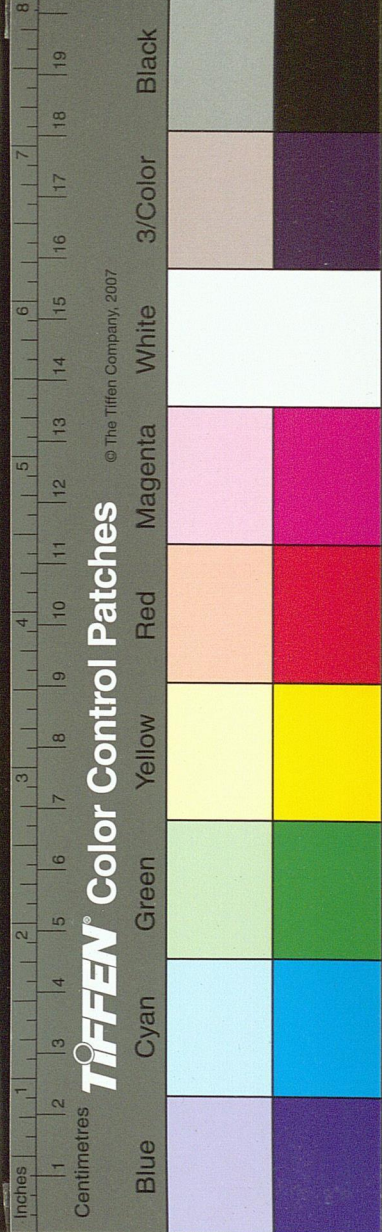
國家圖書館 NATIONAL CENTRAL LIBRARY, TAIWAN, R.O.C.



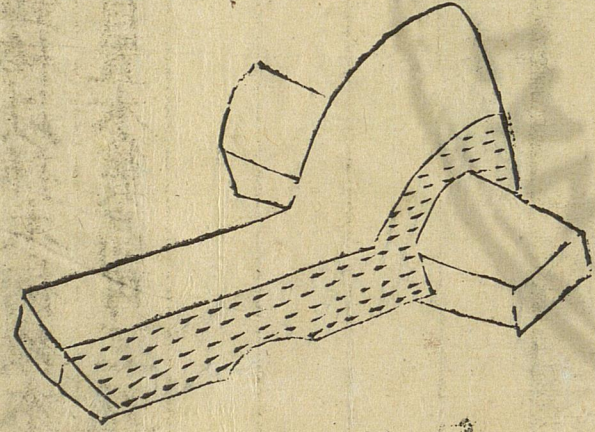
斲



斧釋名曰斧甫始也凡將制器始以斧伐木已乃制之也
 周書曰神農作陶冶斧破木為耒耜鋤耨以墾草莽然後
 五穀興其柄為柯然樵斧桑斧制頗不同樵斧狹而厚桑
 斧濶而薄蓋隨所宜而制也
 鋸解截木也古史考曰孟莊子作鋸說文曰鋸禮唐也莊
 子曰禮者凡鋸之柄亢舉也禮有所斷猶舉鋸之柄以斷物也又曰天下好智
 而百姓求竭矣於是乎斲斤鋸顛焉太公農器篇云鑿鍾
 斧鋸此鋸為農器尚矣今接博桑果不可闕者

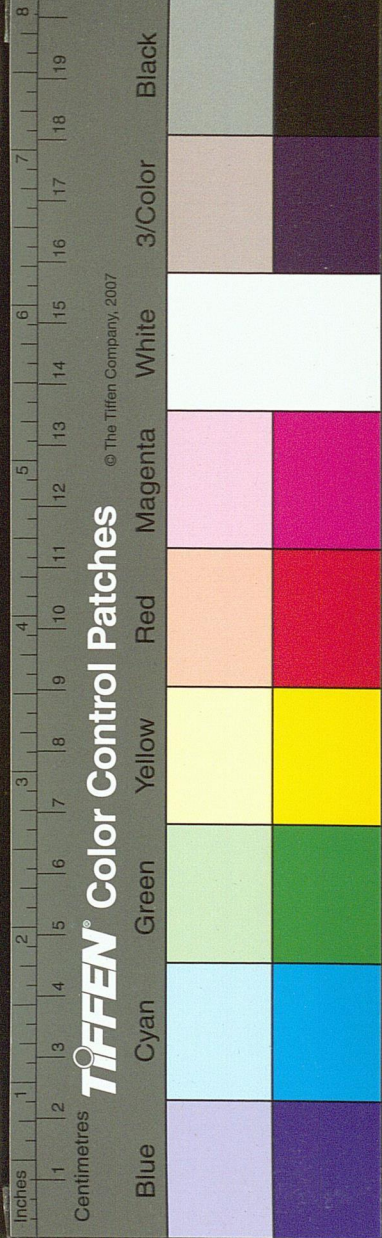


礪

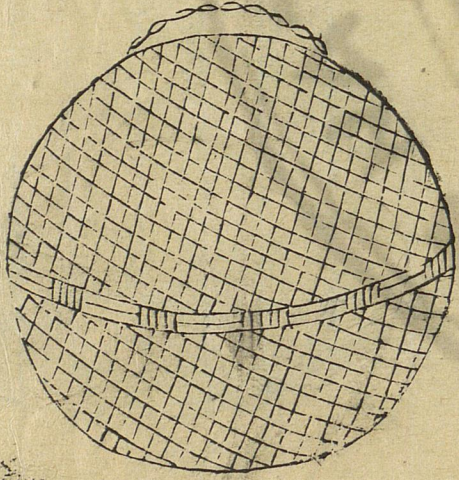
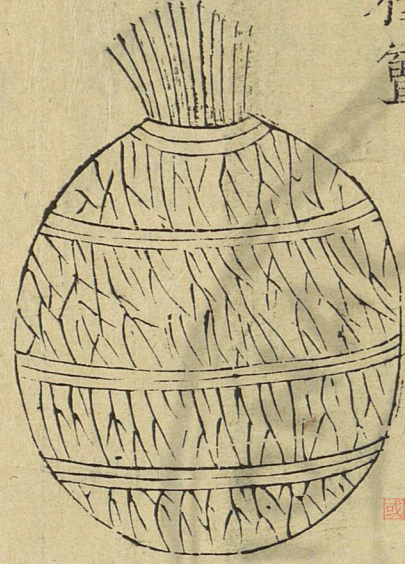


斲查鐮切秦云切草也凡造斲先鍛鐵爲斲背厚可指許
又作斲俗作前非也
 內嵌斲刀如半月而長不帶鐵柄以插木柄截木作礪長
 可三尺有餘廣可四五寸礪首置木篋高可三五寸穿其
 中以受斲首

國家圖書館, NATIONAL CENTRAL LIBRARY, TAIWAN, R.O.C.



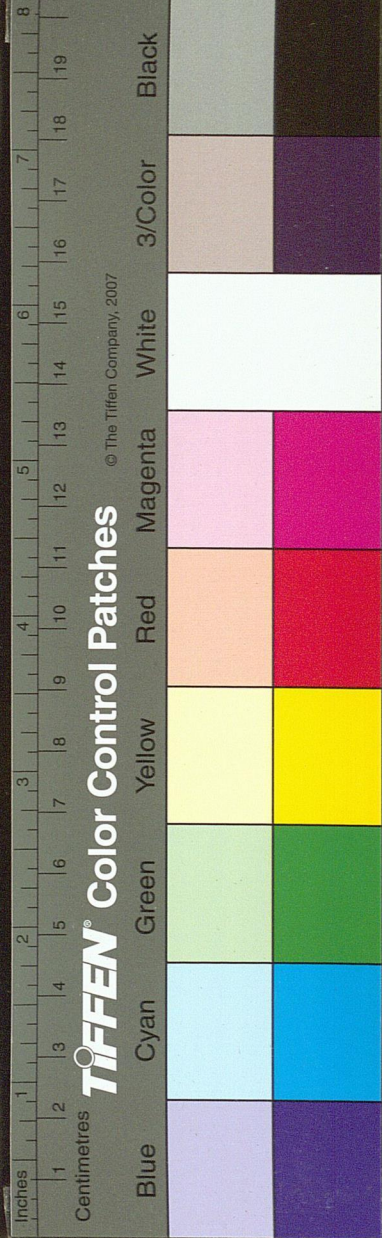
種^上籩盛種竹器也其量可容數斗形如圓甕上有箬口
農家用貯穀種皮之風處不致鬱滯勝窄藏也



種籩

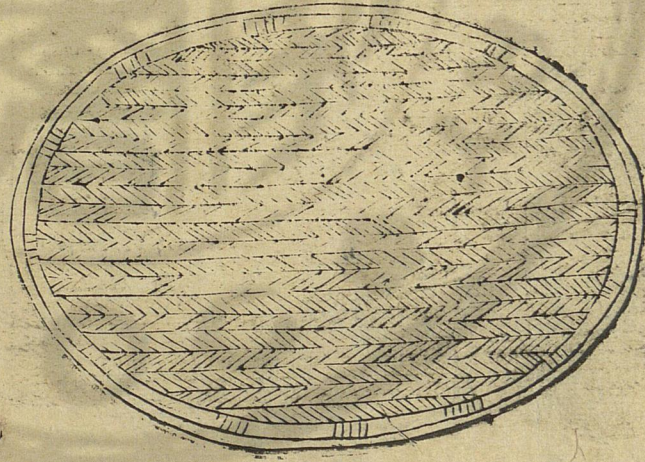
國家圖書館, NATIONAL CENTRAL LIBRARY, TAIWAN, R.O.C.

礪磨刃石也書曰揚州厥貢礪砥
石皆磨也廣志曰礪石
 出首陽山有紫白粉色出南昌者最善山海經曰高粱之
 山多砥礪今隨處間去亦有之但上數處為佳耳



曬槃

曬槃曝穀竹器廣可
五尺許邊緣微起深
可二寸其中平濶似
圓而長下用溜竹二
莖兩端俱出一握許
以便扛移趁日攤布
穀實曝之



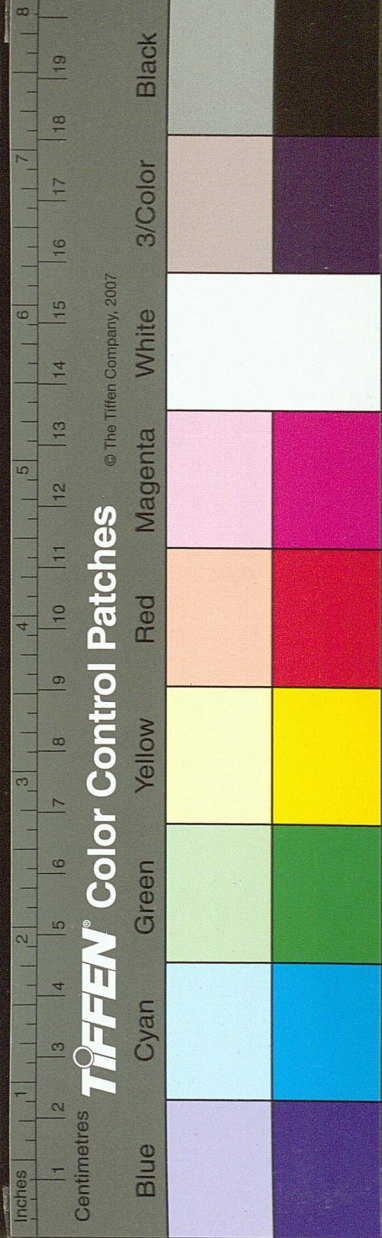
擯

稻

簞



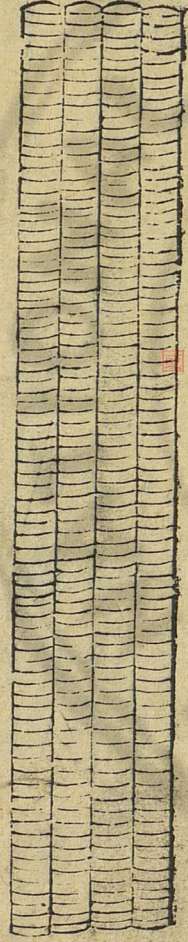
國家圖書館, NATIONAL CENTRAL LIBRARY, TAIWAN, R.O.C.



擯古患切稻簞擯抖擻也簞承所遺稻也農家禾有早晚次第收穫即欲隨手得糧故用廣簞展布置木物或石於上各舉稻把擯之子粒隨落積於簞上非惟免汚泥沙抑且不致耗失又可曬穀物或捲作筴誠為多便南方農種之家率皆制此

穀

盪



穀盪

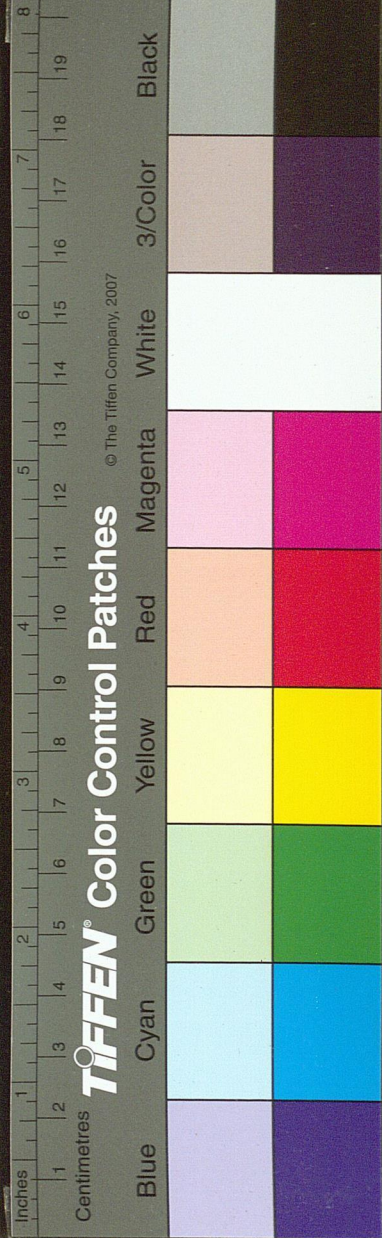
敕中切

集韻云虛器也又謂之氣籠編竹作圍徑可一

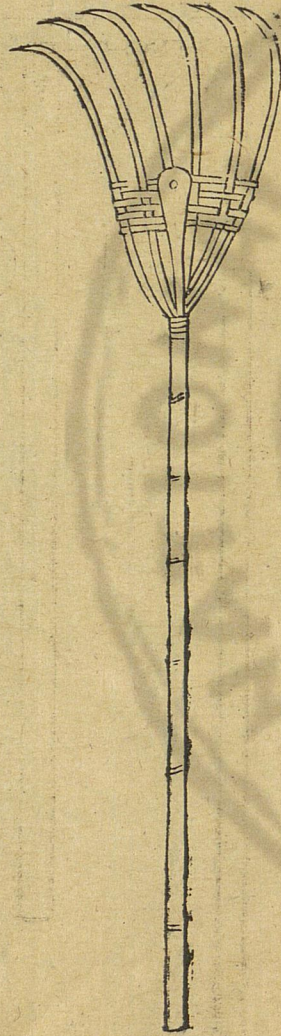
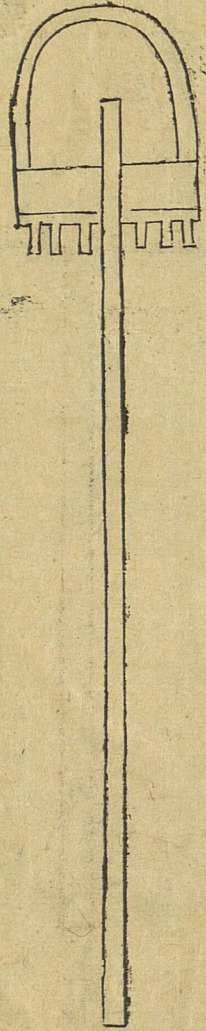
尺高或二丈底足稍大易於堅立內置木撐丑孟切數層乃

先列倉中每間五或六亦量積穀多少高低大小而制之

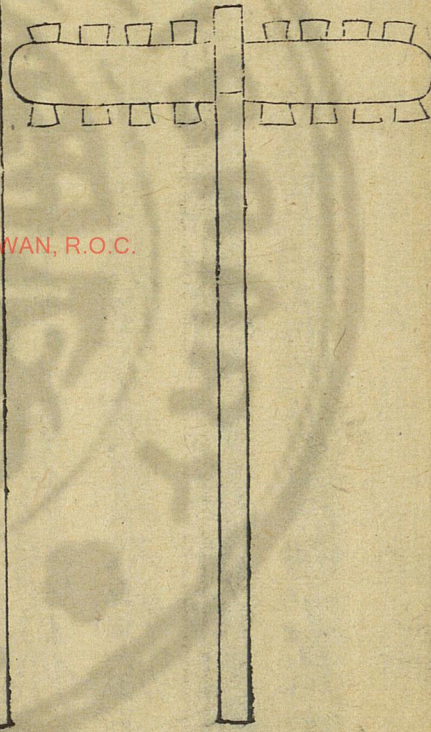
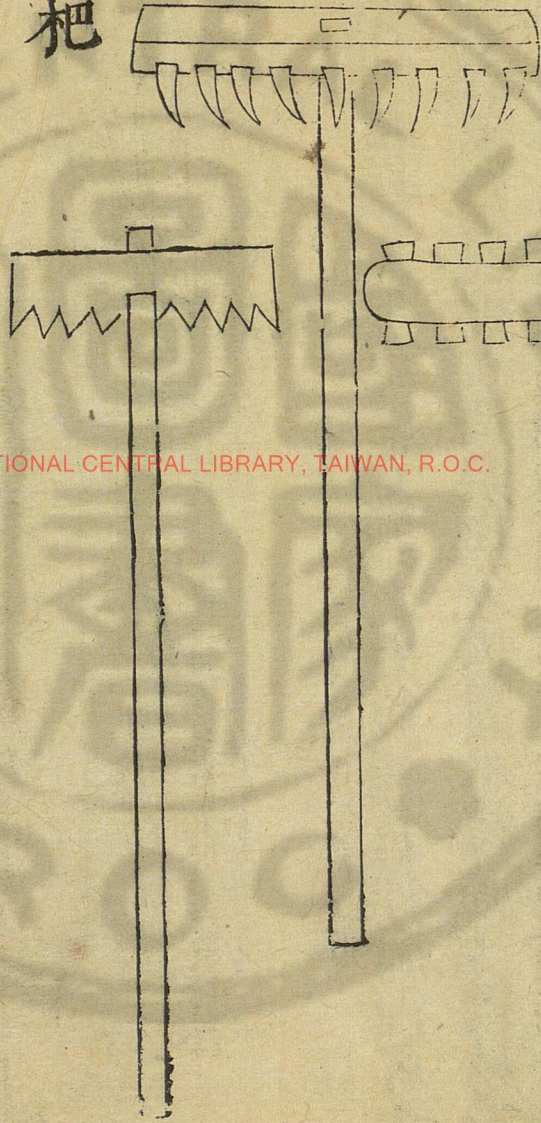
使鬱氣升通米得堅燥免蹈前弊實濟物之良法凡儲蓄之家不可闕也



杷 耘 杷 竹

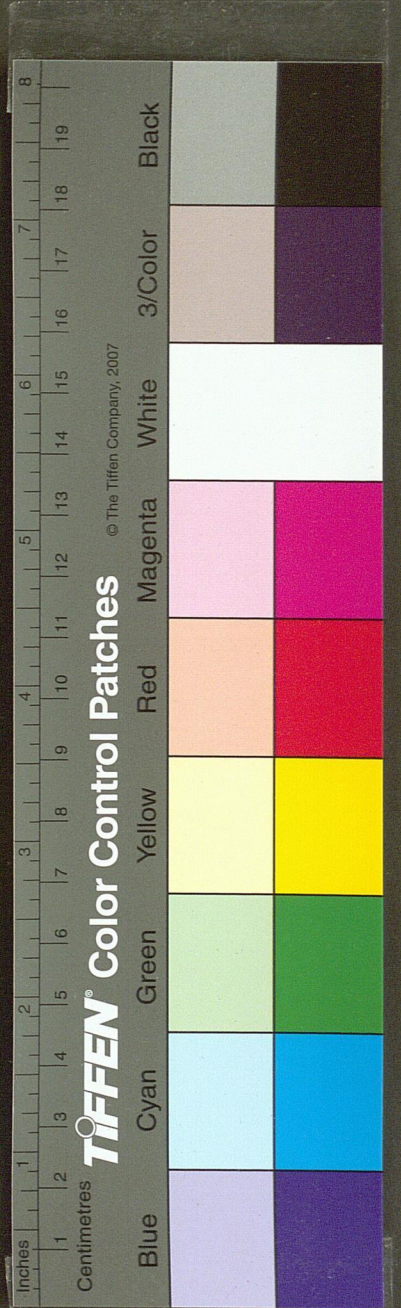


小杷 大杷 穀杷



穀杷

國家圖書館 NATIONAL CENTRAL LIBRARY, TAIWAN, R.O.C.



杷蒲巴切鏤鍤器也方言云宋魏間謂之渠拏女余切或謂之
 渠䟽直柄橫首柄長四尺首濶一尺五寸列鑿方竅以齒
 爲節夫畦畛之間鏤剔塊壤䟽去瓦礫場圃之上耨聚麥
 禾擁積穉穗此益農之功也後有穀杷或謂透齒杷用攤
 曬穀又耘杷以木爲柄以鐵爲齒用耘稻禾竹杷場圃樵
 野間用之

杷



杷博反切

無齒杷也所以平土壤聚穀實說文云無齒爲杷

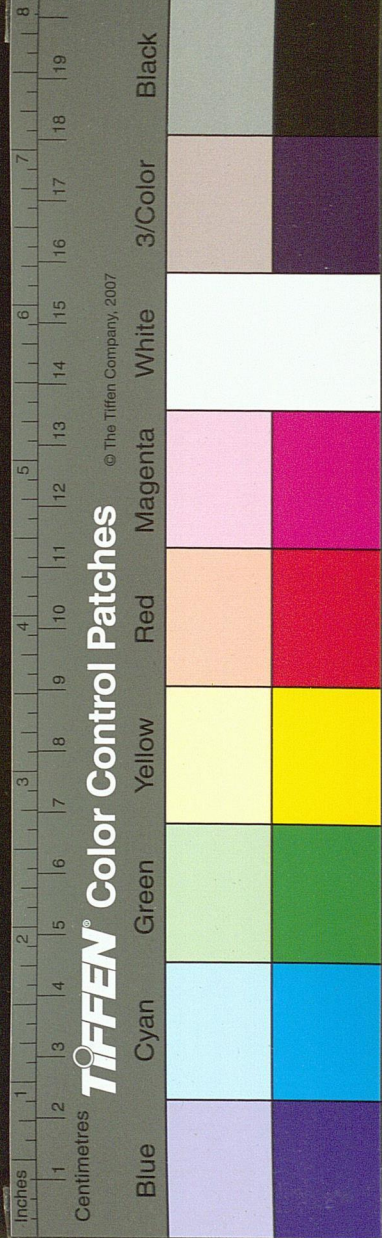
禾譜字作戛訖點切

周生烈曰夫忠憲朝之杷杷正人國之

掃篲秉杷執篲除凶掃穢國之福主之利也杷杷之爲器

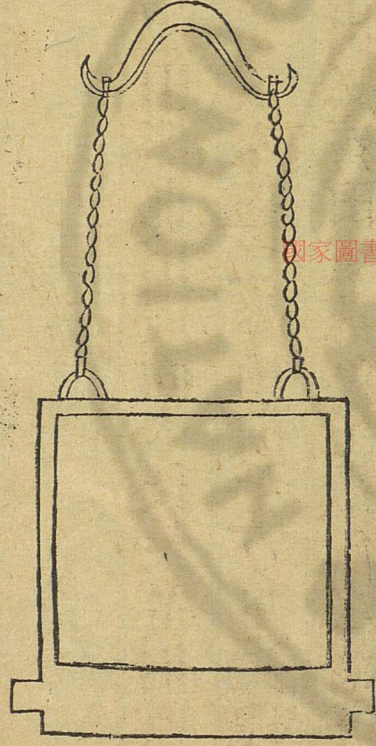
也見於書傳至今不替其用爲不負紀錄矣

國家圖書館 NATIONAL CENTRAL LIBRARY, TAIPEI, R.O.C.



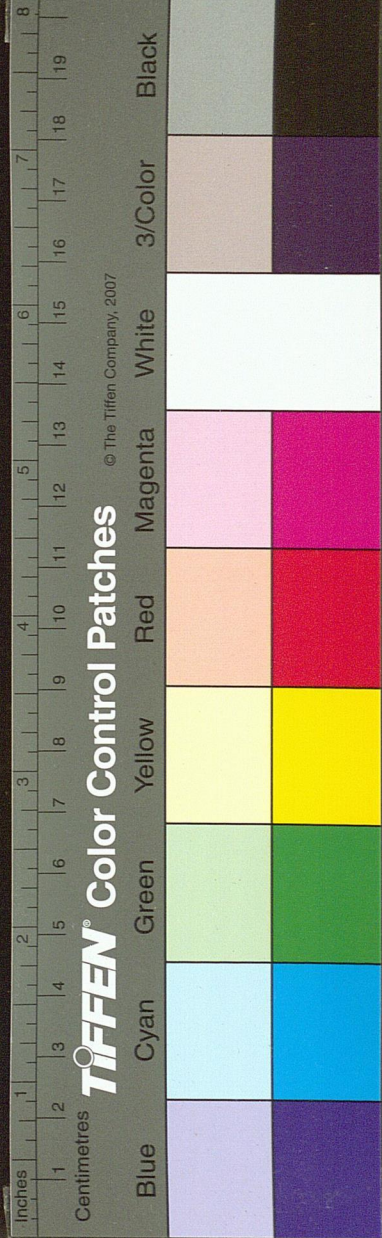
輓古本切 軸輓碾草木軸也其軸木徑可三四寸長約四五尺兩端俱作轉筭挽索用牛曳之夫江淮之間凡漫種稻田其草禾齊生並出則用此輓碾使草禾俱入泥內再宿之後禾乃復出草則不起

輓 軸



平板平摩種秧泥田器也用滑面木板長廣相稱上置兩耳繫索連軛駕牛或人拖之摩田須平方可受種即得放水浸漬勻停秧出必齊田家或仰坐機代之終非

平 板



秧 彈



秧平聲彈去聲以篾為彈彈猶弦也世呼船牽去聲曰彈字義

俱同蓋江鄉櫃田內平而廣農人秧時漫無準則故制此

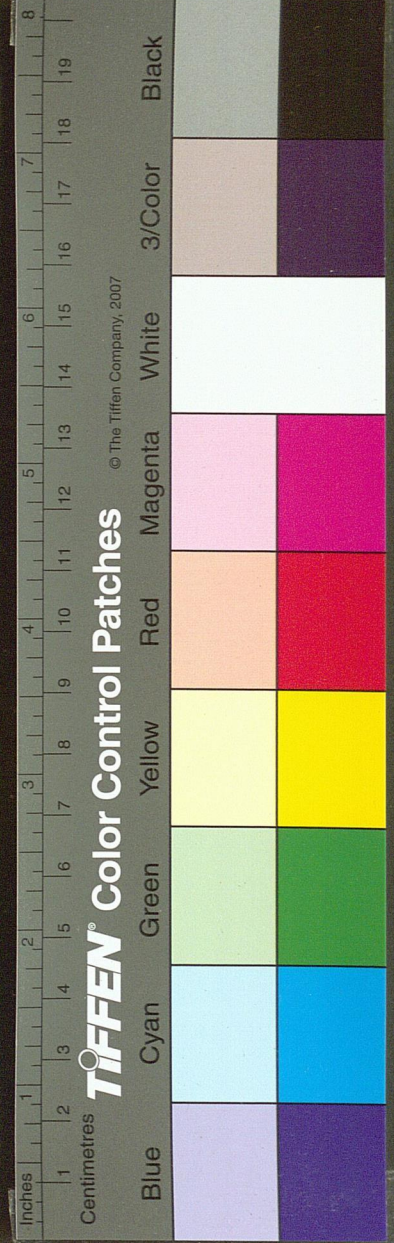
長篾掣於田之兩際其直如弦循此布秧了無欹斜猶梓

匠之繩墨也

杈



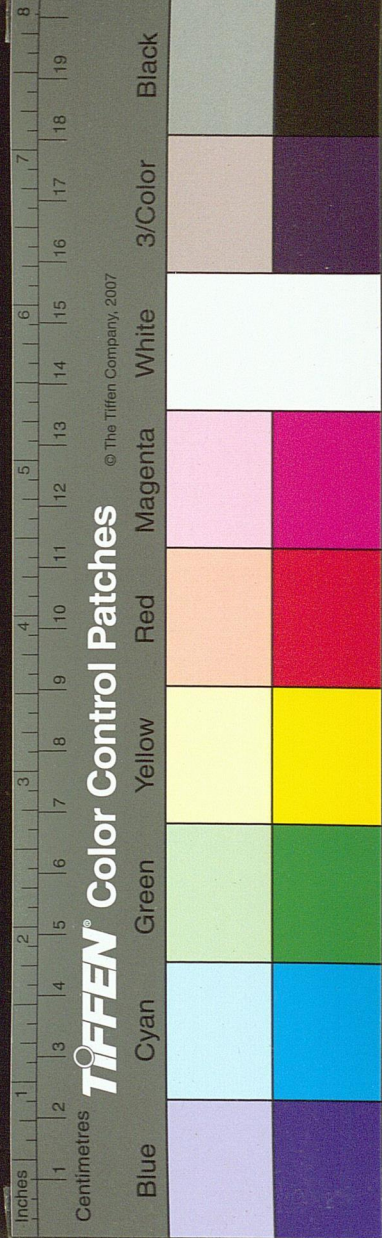
國家圖書館 NATIONAL CENTRAL LIBRARY TAIWAN R.O.C.

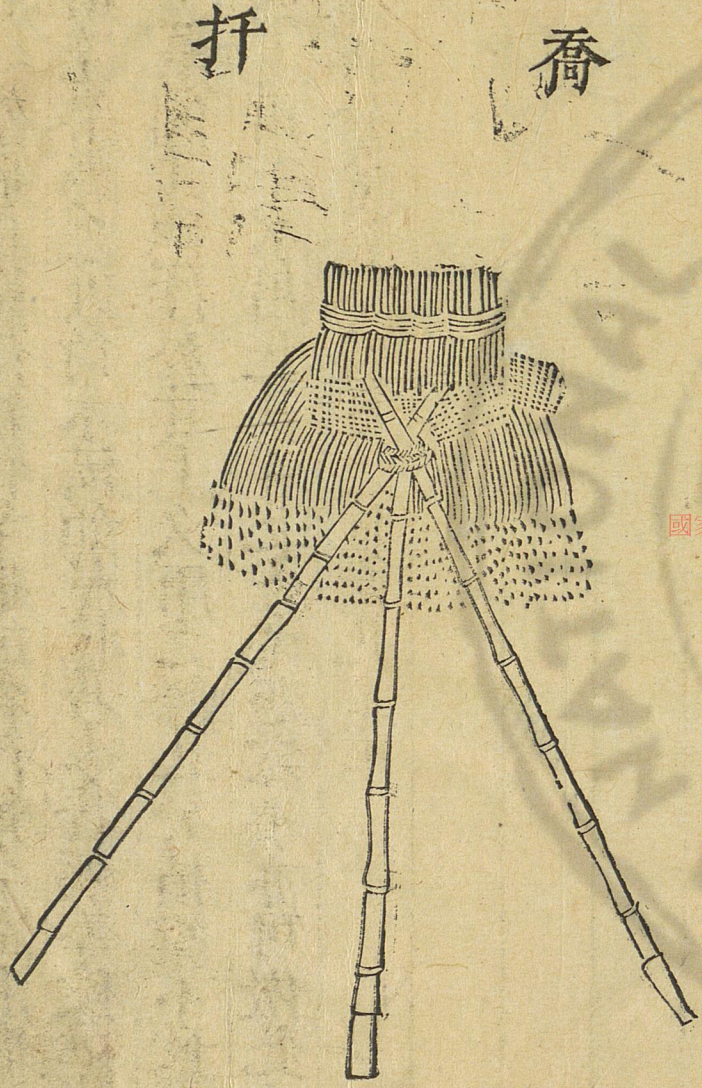


麥 筮



木杈集韻云杈杷農器也
 杈如加籜禾具也揉木為之通長五尺上作二股長可二
 尺上一股微短皆形如彎角以籜取禾稇也又有以木為
 榦以鐵為首二其股者利如戈戟唯用叉取禾束謂之鐵
 杈



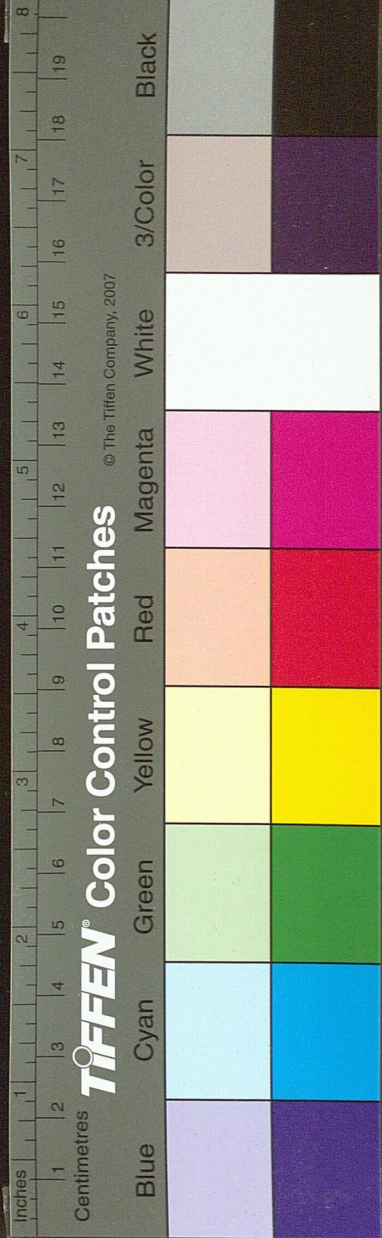


扞

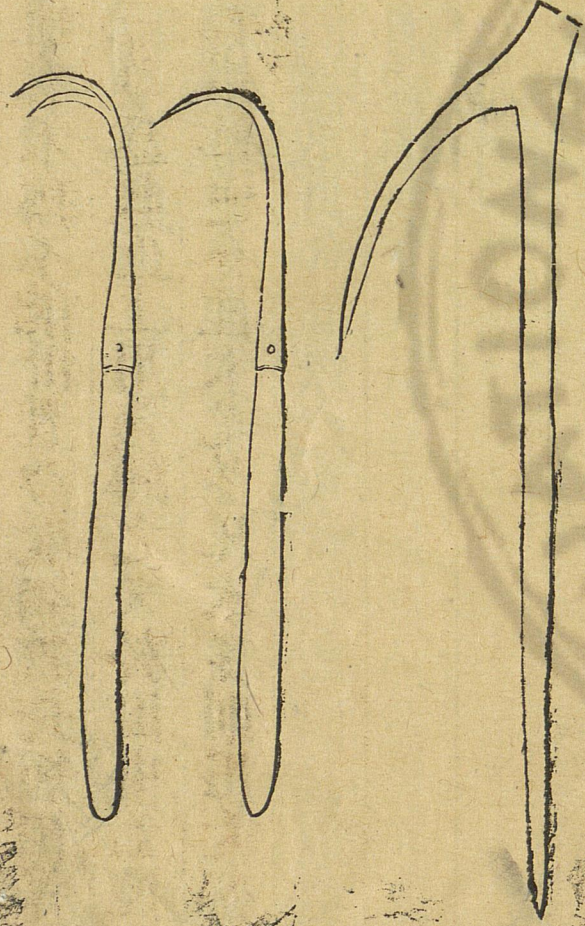
喬

筮 下浪切 架也集韻作筮竹竿也或省作筮今湖湘間收禾
 並用筮架懸之以竹木構如屋狀若麥若稻等稼穫而葉
 繭音繭之悉倒其穗控於其上久雨之際比於積梁不致鬱浥
 江南上雨下水用此其宜北方或遇霖潦亦可倣此庶得
 種糧勝於全廢今特載之冀南北通用

國家圖書館 NATIONAL CENTRAL LIBRARY, TAIPEI, R.O.C.

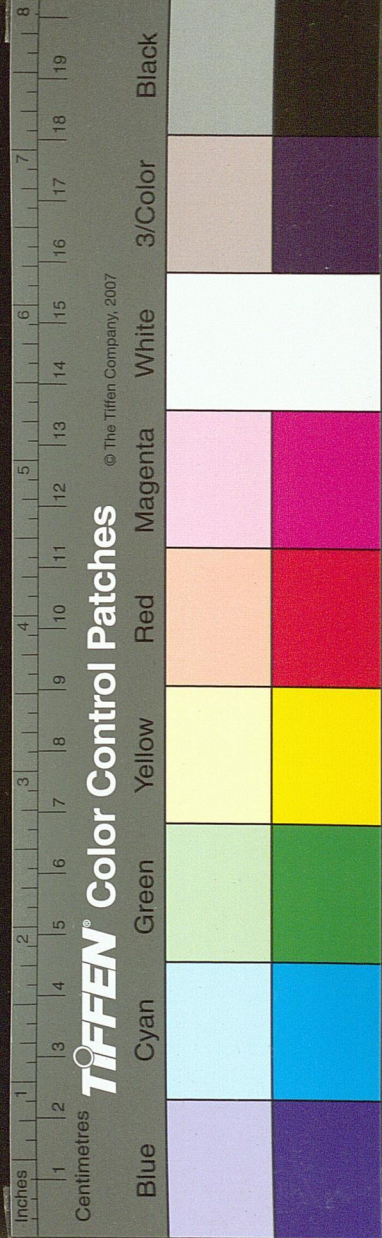


禾 鉤 搭 爪



喬并音干挂禾具也凡稻皆下地沮濕或遇雨潦不無滄浸
 其收穫之際雖有禾稈不能卧置乃取細竹長短相等量
 水淺深每以三莖爲數近上用篾縛之叉於田中上控禾
 把又有用長竹橫作連脊挂禾尤多凡禾多則用笮架禾
 少則用喬并

國家圖書館 NATIONAL CENTRAL LIBRARY, TAIWAN, R.O.C.



禾鉤歛禾具也用禾鉤長可二尺嘗見墾畝及荒蕪之地
農人將芟倒禾稈或草稈用此匝地約之成捆則易於就
束比之手穗力展切甚速便也
搭爪上用鐵鉤帶樗中受木柄通長尺許狀如彎爪用如
爪之搭物故曰搭爪以稷草禾之束或積或擲日以萬數
速於手挈可謂智勝力也

禾檐

禾檐

都濫切

負禾具也其長五尺五寸刻匾木爲之者謂之

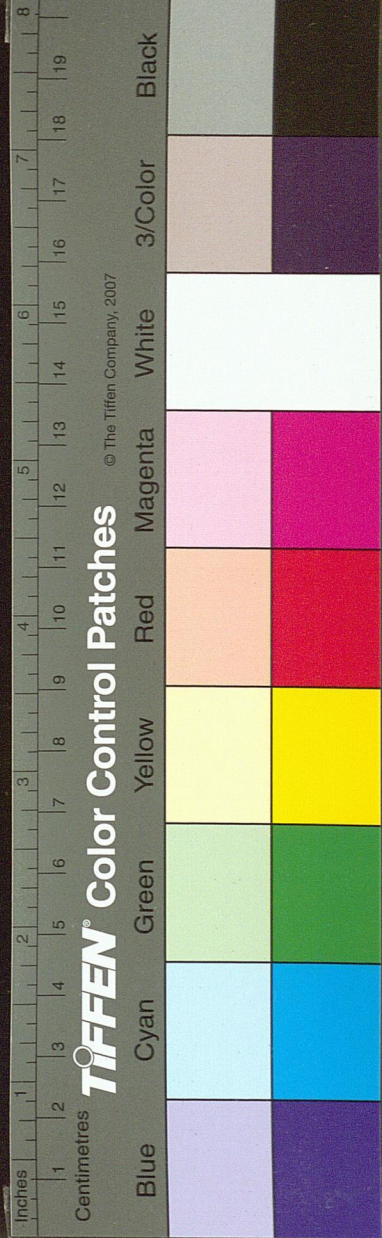
輓檐

斫圓木爲之謂之輓檐

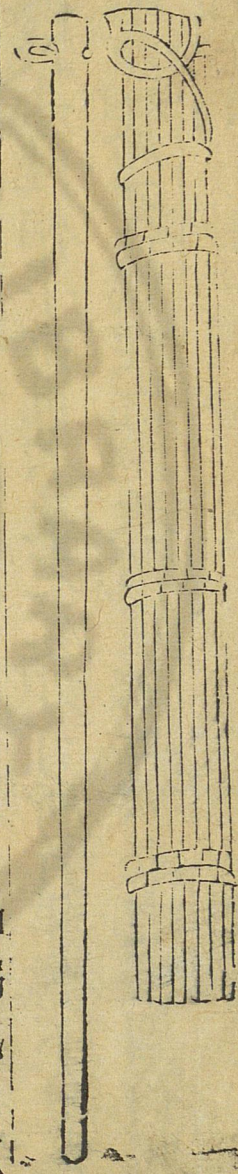
集韻云輓音輓尖頭檐也

匾者宜負器與

物圓者宜負薪與禾釋名曰檐任也力所勝任也凡山路
崎嶇或水陸相半舟車不及之處如有所負非檐不可又
田家收穫之後塋塹之上禾積星散必欲登之場圃荷此
尤便

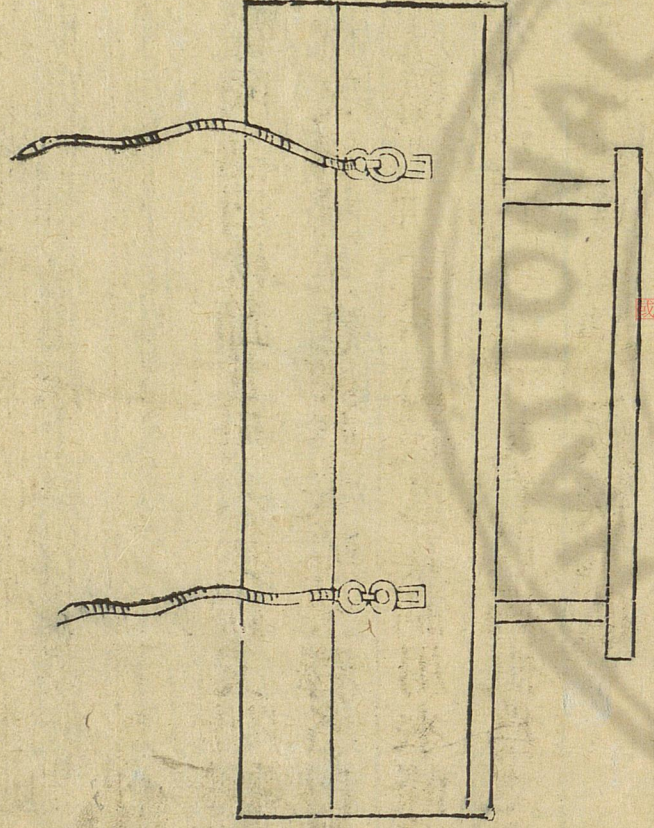


連 耨



連耨 擊禾器國語曰權節其用耒耜耨_{以耨拂也}廣雅
 曰拂謂之架說文曰拂架也拂擊禾連架釋名曰架加也
 加杖於柄頭以_陟枹_切穗而出穀也其制用木條四莖以
 生革編之長可三尺濶可四寸又有以獨槌為之者皆於
 長木柄頭造為掇軸舉而轉之以撲禾也

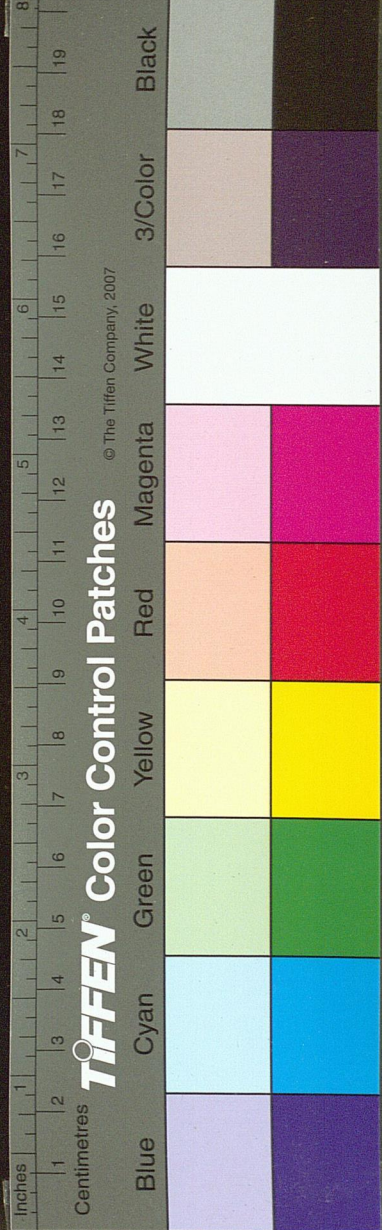
刮 板

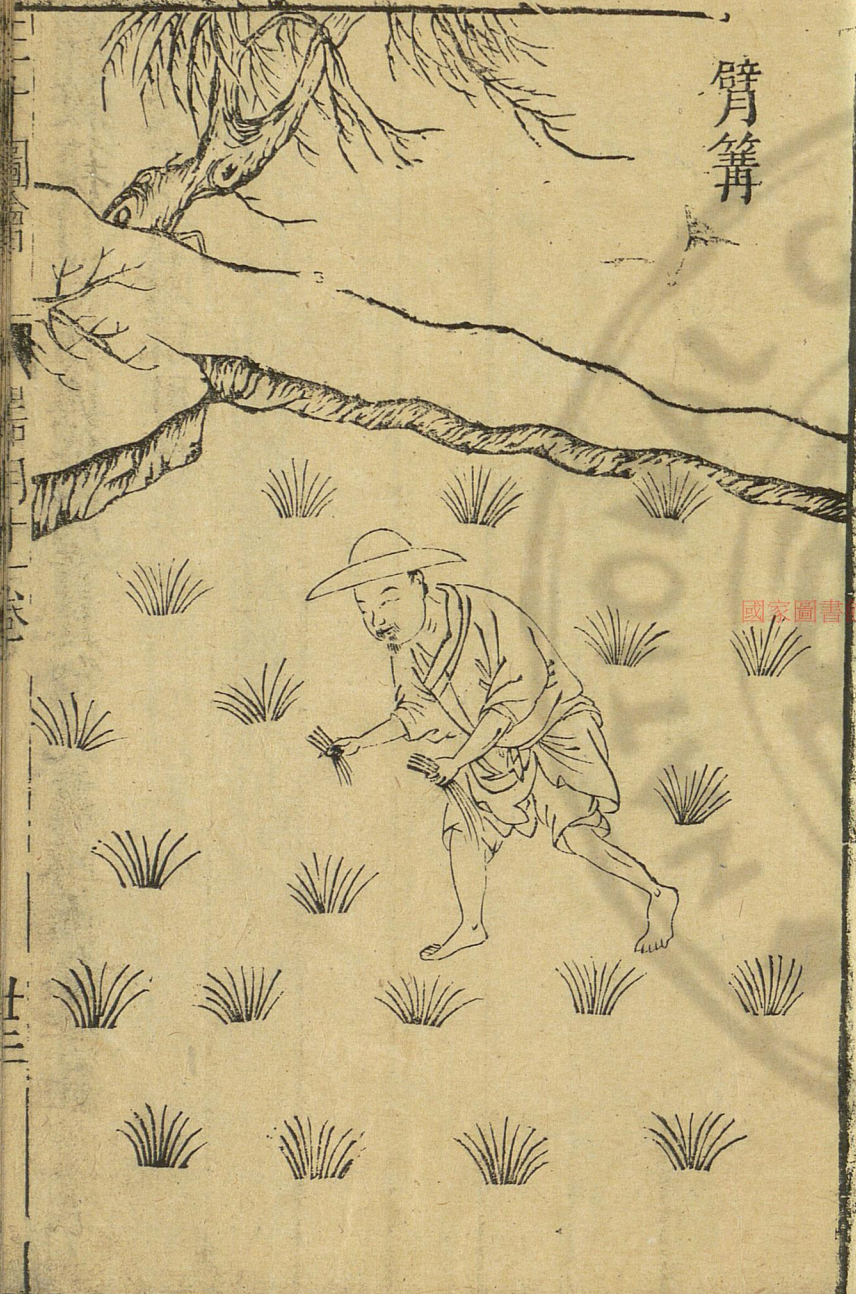


篩穀籜



刮板剗土具也用木板一葉濶二尺許長則倍之或煨鐵
 爲舌板後釘水直二莖高出板上槩以橫柄板之兩傍係
 二鐵鑲以椶拽索兩手推按或人或畜輓行以剗壅脚土
 凡修閘填起堤防填污坎積丘垆均土壤治畦埂疊場圃
 聚子粒擁糠粃胡骨切除瓦礫即擊切雖若乏用然農家之事
 居多也

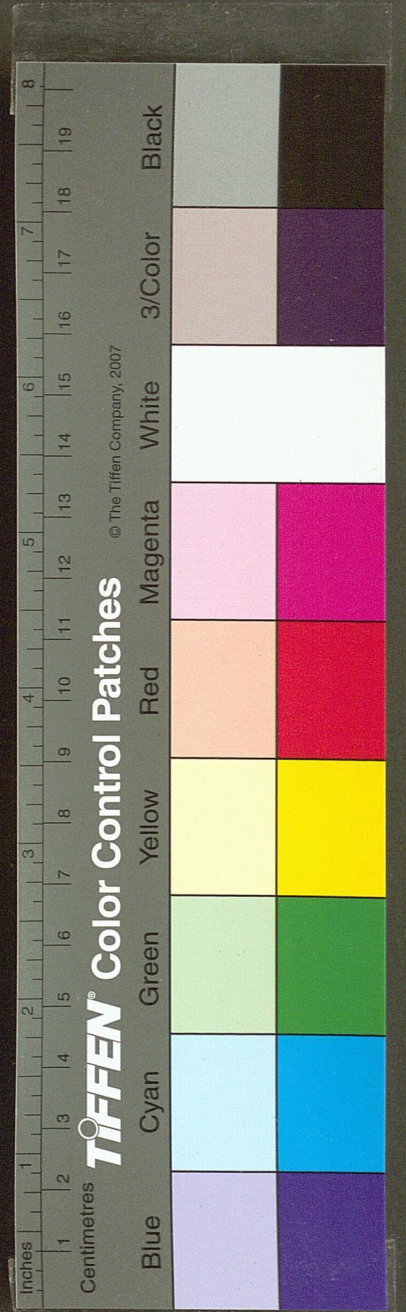




臂篝

三才圖會
器用十一卷
節穀務竹器務與袋同音其制比簾踈而頗深如籃大而
箱淺上有長係可挂

國家圖書館 NATIONAL CENTRAL LIBRARY, TAIWAN, R.O.C.



臂箕

箕古侯切
籠答也

狀如魚筍篾竹編之又呼為臂籠江淮之

間農夫耘苗或刈禾穿臂於內以耨

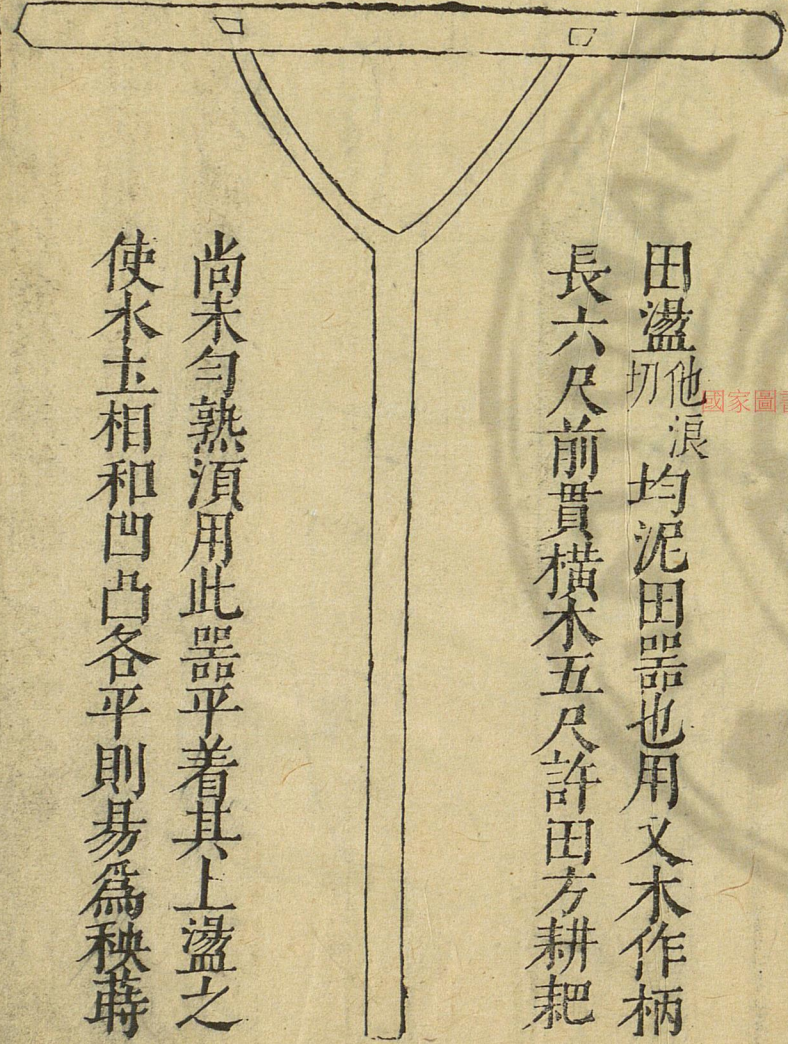
居願切

衣袖猶北俗芟

刈草禾以皮為袖套皆農家所必用者

田

盪



田盪他浪切均泥田器也用又木作柄
長六尺前貫橫木五尺許田方耕耙

尚未勻熟須用此器平着其上盪之
使水土相和凹凸各平則易為秧時

NATIONAL CENTRAL LIBRARY, TAIWAN, R.O.C.

