

Historic, archived document

Do not assume content reflects current scientific knowledge, policies, or practices.

National Forest Fire Report 1984

Forest Service

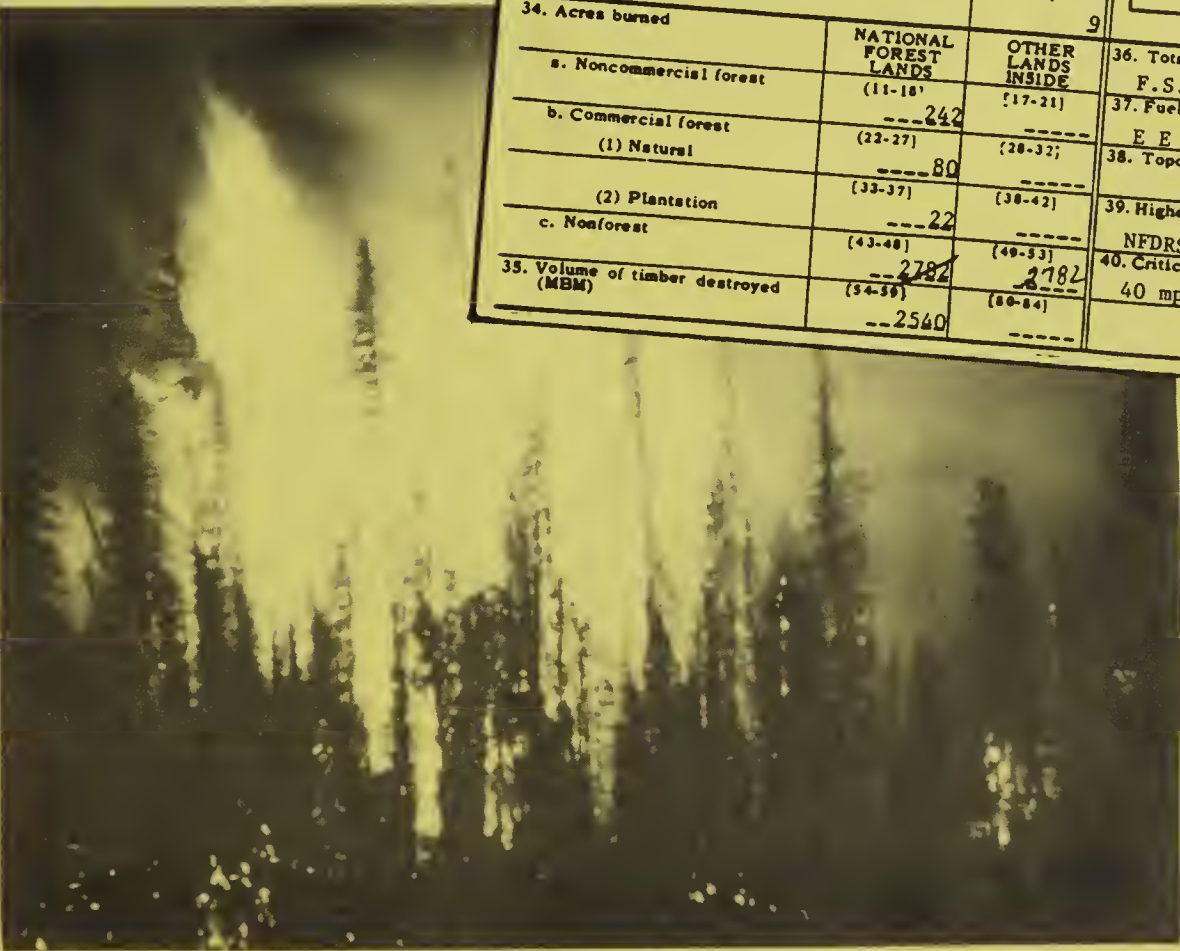


FR-8

USDA - FOREST SERVICE

INDIVIDUAL FIRE REPORT

1. State (2-3) Montana 30			2. County Flathead			3. Forest (4-5) Flathead 10			4. District (6-7) Hungry Horse 06			5. Supervisor (8-10) No. 028		
6. Fire started on (11) Nat'l Forest 1			7. Month (12) August 8			8. Year (15) 27			9. Size Class (24) E			10. Statistical Cause (25) Miscellaneous 9		
11. General Cause (28) Power and Reclamation 5			12. Specific Cause (27-28) Powerline 25			13. Class of people (29) Permittee 2			14. Origin			15. Discovered (Item 15 minus 14) 8 27 1320		
16. First attack (Item 16 minus 15) 8 27 1400			17. First Reinforcement (Item 17 minus 16) 8 27 1430			18. Fire Controlled (Item 18 minus 16) 9 3 1800			19. Fire Out 9 24 1800			20. Discovered by (Class) Location Lookout (other) Scalplock L.O.		
21. First Attack by (Kind) (Amount) Ground Tanker 3 men			22. First Reinforcements (Kind) (Amount) Ground Tanker 2 men			23. Maximum No. Personnel 365 men			24. Value Class at Origin 9			25. Fire danger NFDRS Burning Index 90		
26. Special Weather feature 40 mph "G"			27. Slope 55%			28. Aspect W			29. Elevation 3500'			30. Cover type - vicinity of origin S-MU		
31. Fuel type - vicinity of origin E E			32. Cost Class 44			33. Location Scale: 1/2 inches = 1 mile Location description: a. Township (71-74) 31N b. Range (75-78) 17W c. Section (79-80) --- d. Meridian (79-80) --- e. Latitude (72-75) --- f. Longitude (76-80) --- Alternate description for lands not covered by GLO survey			34. Acres burned			35. Volume of timber destroyed (MBM)		
a. Noncommercial forest (11-18) 242			b. Commercial forest (19-21) 80			c. Nonforest (22-27) 22			36. Total area when controlled F.S. 322 Acres GNP 2782 Acres 3105 3/4			37. Fuel type prevailing on burned area E E		
38. Topography (vicinity of origin) 44			39. Highest Fire Danger NFDRS Burning Index 90			40. Critical Weather Feature 40 mph "G" 9			34. Acres burned (continued)			35. Volume of timber destroyed (continued)		
34. Acres burned (continued)			35. Volume of timber destroyed (continued)			36. Total area when controlled (continued)			37. Fuel type prevailing on burned area (continued)			38. Topography (vicinity of origin) (continued)		
34. Acres burned (continued)			35. Volume of timber destroyed (continued)			36. Total area when controlled (continued)			37. Fuel type prevailing on burned area (continued)			38. Topography (vicinity of origin) (continued)		





Crystal Creek Fire, started August 27, 1984
on the Flathead National Forest, Region 1.

**NATIONAL FOREST
FIRE REPORT
1984**

U. S. Department of Agriculture
Forest Service
Washington, D. C.
July 1985

CONTENTS

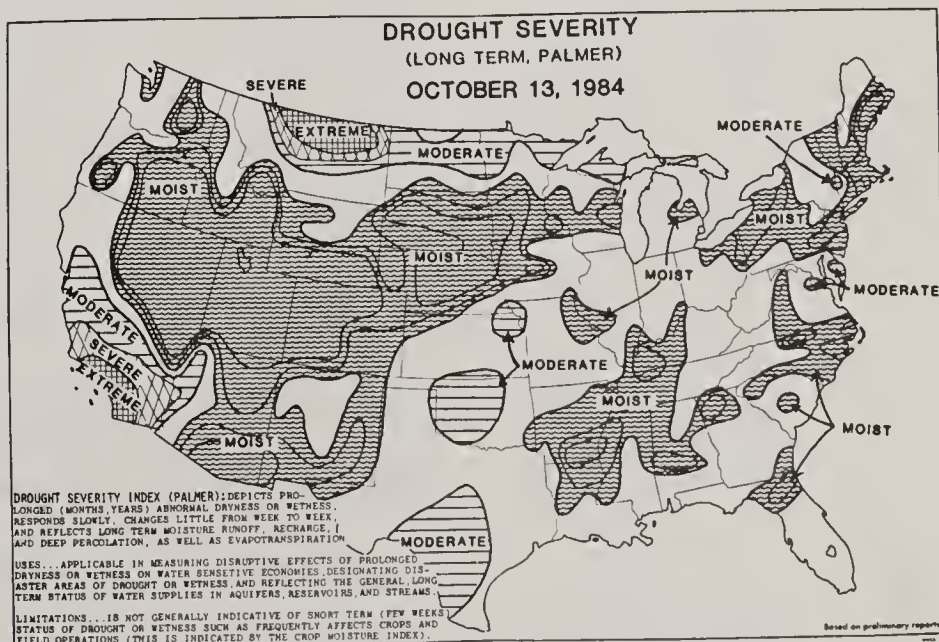
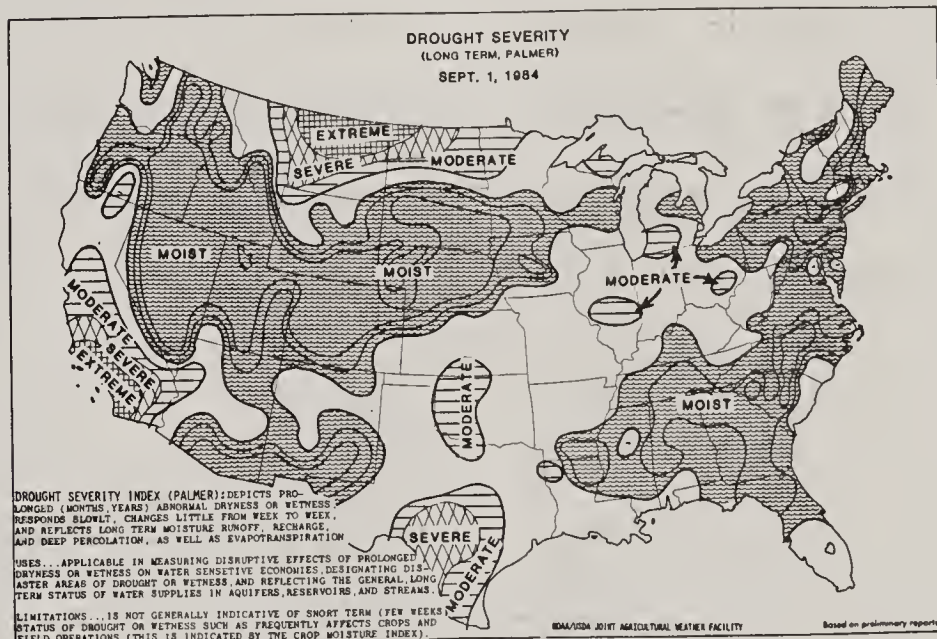
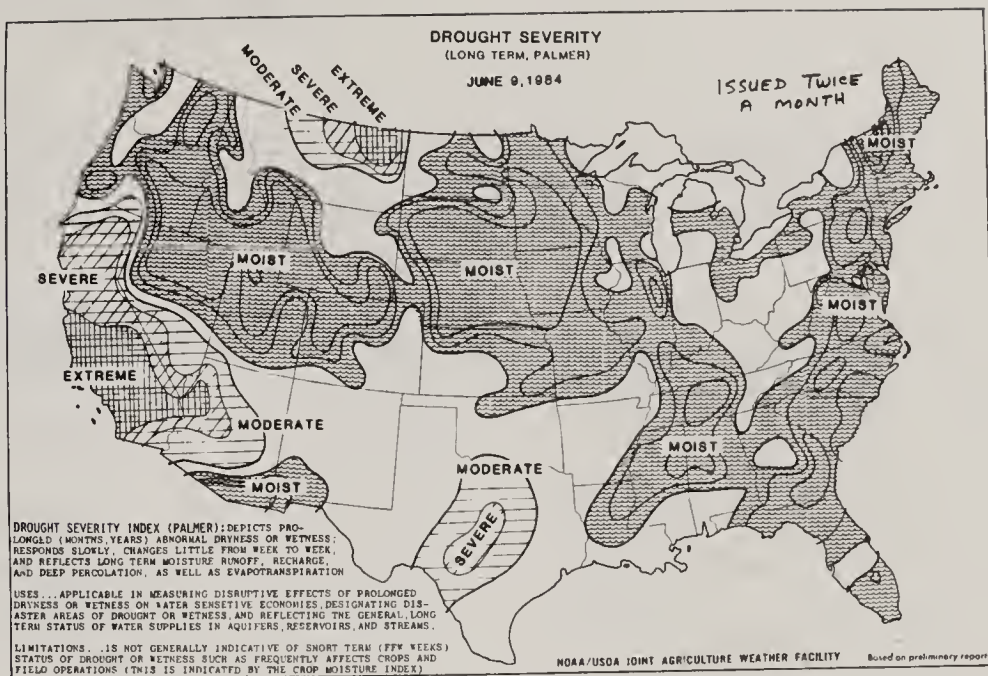
1984 Fire Weather and Seasonal Severity Summary	1
Large Wildfire Occurrence	2
Land Ownership Protection	3
Total Wildfires and Acres Burned	4
Number of Wildfires by Size Class and Cause	5
Personnel Employed on Fire Management Activities	6
Smokejumper and Helitack Report	7
Table 1A -- Number of Wildfires by Statistical Cause by Region	8
Table 1B -- Number of Wildfires by Statistical Cause by State	17
Table 2 -- Number of Acres Burned by Statistical Cause	19
Map of 1984 Large Wildfires	24&25
Table 3A -- Area Burned and Damaged by Region	30
Table 3B -- Area Burned and Damaged by State	44
Table 4 -- Damage by Major Cause by Region	47
Table 5 -- Number of Wildfires by Major Cause and Size Class	48
Table 6 -- Number of Wildfires and Acres Burned by General Cause	49

1984 FIRE WEATHER AND SEASONAL SEVERITY

After experiencing two very wet years accompanied by unusually low wildfire occurrence, the 1984 wildfire season seemed extremely busy by comparison. Although the western United States again received above average amounts of precipitation in the form of rain and snow well into the month of May two exceptions began to emerge early in the year. Southern California started 1984 without any measurable rainfall. This trend continued through winter, spring, and early summer. Eastern Montana also experienced a low level of precipitation in 1984 that set the stage for seven days of wildfire activity the last week in August.

The seriousness of the southern California situation surfaced early in February when Santa Ana winds blew down power lines starting several project wildfires. In April activity shifted to the southern states. On April 25 two firefighters lost their lives while suppressing a wildfire on the Ouachita National Forest in Arkansas. In late June wildfire activity shifted west to the National Forests in Arizona. In July the Toiyabe National Forest in western Nevada experienced a series of project wildfires. By late July occasional tropical storm systems from the Gulf of Mexico essentially eliminated the potential for serious conflagrations in southern California and western Nevada. Montana, Idaho, Washington, Oregon, and Northern California experienced an increased level of lightning activity that kept smokejumper bases busy.

During the last week of August the entire State of Montana experienced a large number of lightning fires followed by three to four days of strong winds. This combination of weather factors resulted in 17 project fires in eastern Montana. Early rains and snowstorms ended the danger of wildfires in most areas of the United States by the end of September except for southern California. Very little wildfire activity occurred during the remainder of 1984.



LARGE WILDFIRE OCCURRENCE

There were 72 Class E and larger wildfires in 1984. The 22 Class F & G wildfires listed below account for 76% of the total area burned by wildfire.

<u>REGION</u>	<u>DATE</u>	<u>STATE</u>	<u>NATIONAL FOREST</u>	<u>NAME OF WILDFIRE</u>	<u>ACRES BURNED</u>
1	8/29	Montana	Custer	Wheatwell	2,500
1	8/27	Montana	Flathead	Crystal Creek	3,105
1	8/27	Montana	Helena	North Hill	26,950
3	6/2	Arizona	Tonto	Black	1,231
3	6/15	Arizona	Kaibab	Sanderson	1,200
3	3/29	New Mexico	Cibola	Morris	1,044
4	6/28	Nevada	Toiyabe	Indian	17,000
4	6/28	Nevada	Toiyabe	Mitchell Canyon	9,436
4	7/3	Nevada	Humboldt	McCoy	3,815
5	7/6	California	Angeles	Mescal	1,200
5	1/26	California	Cleveland	Modjeska	1,160
5	5/30	California	Cleveland	Aguanga	6,430
5	8/23	California	Lassen	Badger	1,971
5	5/29	California	Los Padres	Morettz	1,338
5	8/10	California	Los Padres	Blue	2,405
5	8/13	California	Modoc	Rail	4,000
5	8/21	California	Plumas	Second	1,100
5	5/28	California	San Bernardino	Lytle	2,100
5	7/7	California	Sequoia	Bodfish	12,706

8	5/19	Florida	Ocala	Bombing Range	2,630
8	2/5	Louisiana	Kisatchie	Bolton Hill	2,180
9	4/28	Michigan	Huron-Manistee	River Road	1,718

LAND OWNERSHIP PROTECTION

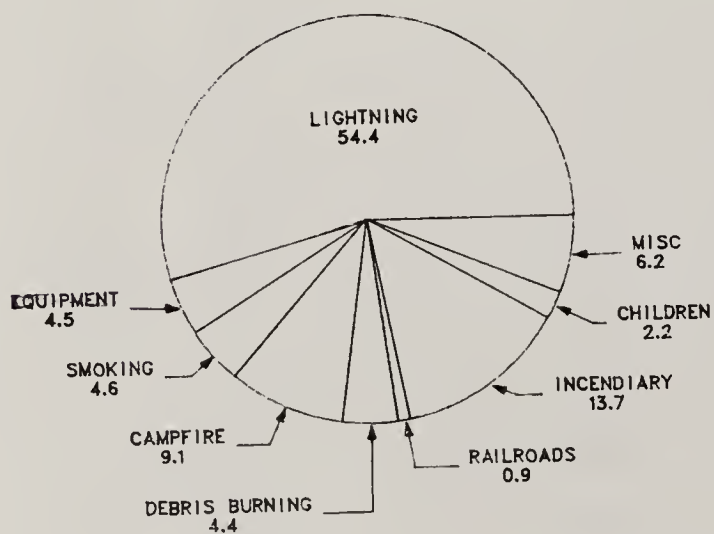
The following table shows the amount of land protected in 1984 by the USDA Forest Service. The acres under protection vary slightly from year to year. Valid comparisons of statistics for prior years with this report must take this into consideration.

USDA-FOREST SERVICE								Calendar Year	
LAND OWNERSHIP PROTECTION REPORT (Summary of acres by states)								1984	
								Region	
Region	INSIDE FOREST SERVICE PROTECTION BOUNDARIES								NATIONAL FOREST LAND PROTECTED BY OTHERS
	PROTECTED BY THE FOREST SERVICE							S&P LAND PROTECTED BY STATE AND FS (Under mutual assistance agreements)	
	State and Private Land (Include county and municipal land)				Other Federal Land	National Forest Land	Total		
Fee Basis	Offset Basis	Reimbursement Suppression Costs Only	Without Reimbursement						
1	2,202,780	292,764	44,126	4,299	222,840	22,822,425	25,589,234		2,338,069
2	23,215	255,938	645,263		855,521	21,212,230	22,992,167	306,017	411,153
3		25,487	495,243	964,932	551,487	20,714,791	22,751,940	288,853	
4	546,299	162,469	119,705	267,242	425,834	29,317,401	30,838,950	367,770	1,963,980
5		3,821,533		7,878	175,265	19,091,198	23,095,874		778,065
6		7,305			61,767	24,673,239	24,742,311	345,354	4,471
8		242,027			9,387	11,657,798	11,909,212	1,775,274	362,253
9	139,625	1,275,043		992,828	36,017	10,193,825	12,637,338		1,285,129
10			69,882	408,572	4,469,689	22,573,780	27,521,923	65,571	405,760
Total	2,911,919	6,082,566	1,374,219	2,645,751	6,807,807	182,256,687	202,078,949	3,148,839	7,548,880

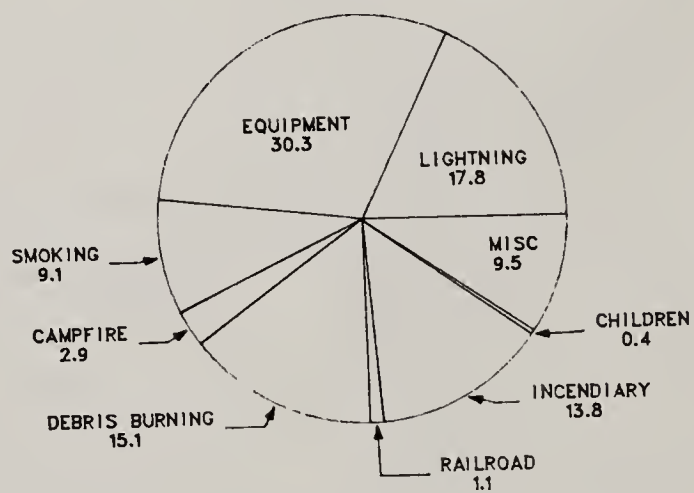
TOTAL WILDFIRES AND ACRES BURNED - NATIONAL FOREST PROTECTION

<u>CALENDAR YEAR</u>	<u>.....NUMBER OF WILDFIRES.....</u>			<u>ACRES BURNED</u>
	<u>LIGHTNING</u>	<u>PERSON-CAUSED</u>	<u>TOTAL</u>	
1979	5,111	6,247	11,358	370,806
1980	4,623	6,615	11,238	308,400
1981	5,976	7,006	12,982	209,631
1982	3,788	4,195	7,983	44,622
1983	3,767	3,776	7,043	66,498
AVERAGE				
79-83	4,653	5,568	10,121	199,991
1984	5,597	4,530	10,127	141,139

1984 PERCENT OF TOTAL WILDFIRES BY STATISTICAL CAUSE



1984 PERCENT OF TOTAL BURNED ACREAGE BY STATISTICAL CAUSE



INSIDE FOREST SERVICE PROTECTED BOUNDARY

NUMBER OF WILDFIRES
BY SIZE CLASS AND CAUSE
ALL REGIONS

<u>SIZE CLASS IN ACRES</u>	<u>LIGHTNING</u>	<u>PERSON-CAUSED</u>	<u>TOTAL</u>
A (.25 or less)	4,393	2,438	6,831
B (.26 - 9)	872	1,514	2,386
C (10 - 99)	101	481	582
D (100 - 299)	11	50	61
E (300 - 999)	18	31	49
F (1000 - 4999)	6	12	18
G (5000 +)	1	4	5
TOTAL	5,402	4,530	9,932

<u>STATISTICAL CAUSE</u>	<u>NUMBER OF WILDFIRES</u>	<u>ACRES BURNED</u>
LIGHTNING	5,402	25,085
EQUIPMENT	443	42,809
SMOKING	459	12,822
CAMPFIRE	902	4,033
DEBRIS BURNING	434	21,357
RAILROAD	85	1,611
INCENDIARY	1,360	19,466
CHILDREN	226	608
MISCELLANEOUS	621	13,348
TOTAL	9,932*	141,139

* This figure differs from the total number of fires shown in Table 1A because it does not include 195 lightning caused unplanned ignition prescribed fires that show up in the data base (see Table 5, page 48).

ATTAINMENT

In 1984, 93 percent of all wildfires were controlled at 10 acres or less in size on approximately 202 million acres of National Forest protected lands. Seventy-two wildfires, or 0.7 percent of the total number of wildfires, burned 300 or more acres. Wildfires burned approximately 0.06 percent of the land area protected by the Forest Service.

PERSONNEL EMPLOYED ON FIRE CONTROL ACTIVITIES

CALENDAR YEAR

1984

- INSTRUCTIONS:**
1. Data for Items 1a, 1b, and 2a should be taken from work planning and budget records in the Supervisor's office.
 2. Items 1c, 1d, 2b and 2c may be obtained from actual records in the S.O. or from the Ranger District. If obtained from the Ranger having intimate knowledge on use of his men, these items may be estimated. Complete accuracy is not required.
 3. Item 3 may be estimated where large numbers of casuals are employed. Since each reemployment counts as a new employment sufficient accuracy can be obtained by sample counts and measurement of time slips.

ITEM NO.	ITEM	NUMBER	
		SUB-TOTAL	TOTAL
1.	Regular appointed personnel		
a.	Full-time fire control (20 pay periods or more)	1673	
b.	Part-time fire control	1910	
c.	Others used on presuppression sometime during year	1679	
d.	Others used on suppression (exclude those reported under a, b, or c)	4621	
e.	Total (a + b + c + d)		9883
2.	Seasonal or short-term personnel		
a.	Regular fire control (crews, firefighters, patrol, lookouts, etc.)	4636	
b.	Others (BD, KV, BR, R&T, etc.) who spent some time on fire control work	4016	
c.	Emergency firefighters (exclude those reported under a or b)	962	
d.	Total (a + b + c)		9614
3.	Total number of casuals employed on fire suppression (Each reemployment counts as an employment)		10,746
4.	Number of casuals (included in Item 3) employed for first time (Ranger's estimate is adequate)	2959	
5.	GRAND TOTAL (1e + 2d + 3)		30,243

REMARKS (if necessary)

SUBMITTED BY (Signature)

John A. Hafterson

TITLE

Director, Aviation and Fire
Management

SMOKEJUMPER AND HELITACK REPORT

1984

REGION

National Summary

INSTRUCTIONS:

- Item 1 - Permanent bases only. Exclude temporary satellite bases.
 Item 2 - Planned strength of unit. Do not include non-fire goers.
 Item 3b - Exclude wildfires where initial attack is by jumpers or helitack crewmembers.
 Item 5 - For smokejumpers report on wildfires jumped only. For helitack report only wildfires where travel is by helicopter. Include travel time to and from wildfires.

ITEM	SMOKEJUMPERS		HELITACK
	Home Region	From Other Regions	Crewmembers
Number of bases	7		63
Number of jumpers or crewmembers	351		439
Number of fires attacked or jumped*			
a. Initial attack	356	30	1446
b. Follow-up	70	8	830
c. Total	426	38	2276
Number of jumps to wildfires	1627	215	883
Person-days on wildfires	6162	474	13,232

Remarks (Use for explanatory notes, if necessary)

* In addition:

R-1 and R-5 jumped on a total of 47 fires for other agencies.

R-1 and R-5 smokejumper ground activities included 78 wildfires.

R-4 jumped a total of 60 fires in Alaska.

TABLE 1A

NUMBER OF WILDFIRES BY STATISTICAL CAUSES

ANNUAL FIRE REPORT 1984

FOREST	STATE		PERSON CAUSED									TOTAL PERSON CAUSED	TOTAL ALL CAUSES	NOT IN FS	NF LAND CUT PROTECTN
			LIGHTNING	EQUIP	SMCKING	CAMP FIRE	DEBRIS BURNING	RAIL ROAD	INCEN CIARY	CHILD REN	MISC				
BEAVERHEAD	MONT.	NATIONAL FOREST	7	-	-	-	1	-	-	-	-	1	8	-	-
		TOTAL ALL LAND	7	-	-	-	1	-	-	-	-	1	8	-	-
BITTERROOT	IDAHO	NATIONAL FOREST	25	-	-	1	-	-	-	-	-	1	26	-	-
		TOTAL ALL LAND	25	-	-	1	-	-	-	-	-	1	26	-	-
	MONT.	NATIONAL FOREST	53	-	5	6	2	-	3	1	4	21	74	-	-
		TOTAL ALL LAND	65	-	6	8	4	-	3	2	5	28	93	18	1
PAN HANDLE	IDAHO	NATIONAL FOREST	152	8	5	22	3	-	3	-	8	49	201	-	-
		TOTAL ALL LAND	163	11	7	24	10	1	3	3	11	70	233	28	4
	WASH.	NATIONAL FOREST	18	-	2	-	-	-	-	-	-	2	20	-	-
		TOTAL ALL LAND	19	-	2	-	-	-	-	-	-	2	21	1	-
CLEARWATER	IDAHO	NATIONAL FOREST	183	2	2	1	1	-	-	-	1	7	190	-	-
		TOTAL ALL LAND	198	2	2	2	1	-	-	-	1	8	206	16	-
CUSTER	MONT.	NATIONAL FOREST	40	-	-	1	-	-	-	-	2	3	43	-	-
		TOTAL ALL LAND	41	1	-	1	2	-	-	-	2	6	47	3	1
	N.D.	NATIONAL FOREST	5	4	1	1	-	-	-	-	2	8	13	-	-
		TOTAL ALL LAND	5	4	1	1	-	4	-	-	2	12	17	4	-
DEERLODGE	MONT.	NATIONAL FOREST	13	-	1	3	1	-	-	-	1	6	19	-	-
		TOTAL ALL LAND	13	-	1	4	3	1	-	-	1	10	23	4	-
FLATHEAD	MONT.	NATIONAL FOREST	68	2	6	7	2	-	-	1	9	27	95	-	-
		TOTAL ALL LAND	68	2	7	8	7	-	-	1	16	41	109	13	1
GALLATIN	MONT.	NATIONAL FOREST	6	-	-	4	2	-	1	-	-	7	13	-	-
		TOTAL ALL LAND	6	-	1	4	2	-	1	-	1	9	15	2	-
HELENA	MONT.	NATIONAL FOREST	40	-	2	3	-	-	-	1	1	7	47	-	-
		TOTAL ALL LAND	46	3	3	3	4	1	-	1	2	17	63	16	-
KOOTENAI	IDAHO	NATIONAL FOREST	9	-	-	-	-	-	-	-	-	-	9	-	-
		TOTAL ALL LAND	9	-	-	-	-	-	-	-	-	-	9	-	-
	MONT.	NATIONAL FOREST	103	1	1	4	5	-	1	2	7	21	124	-	-
		TOTAL ALL LAND	127	9	3	6	12	5	3	3	16	57	184	59	1
LEWIS + CLARK	MONT.	NATIONAL FOREST	19	2	-	5	1	-	-	-	2	10	29	-	-
		TOTAL ALL LAND	21	2	-	5	1	-	-	-	2	10	31	2	-
LOLO	MONT.	NATIONAL FOREST	107	4	2	9	6	-	-	-	2	23	130	-	-
		TOTAL ALL LAND	128	5	7	13	11	1	-	2	8	47	175	44	1
NEZPERCE	IDAHO	NATIONAL FOREST	162	-	-	-	2	-	1	-	3	6	168	-	-
		TOTAL ALL LAND	168	-	-	-	2	-	1	-	3	6	174	5	1
REGION 01 TOTAL		NATIONAL FOREST	1010	23	27	67	26	-	9	5	42	199	1209	-	-
		TOTAL ALL LAND	1109	39	40	80	60	13	11	12	70	325	1434	215	10

TABLE 1A

NUMBER OF WILDFIRES BY STATISTICAL CAUSES

ANNUAL FIRE REPORT 1984

FOREST	STATE		LIGHT- NING	EQUIP	SMOK ING	CAMP FIRE	DEBRIS BURNING	RAIL ROAD	INCEN DIARY	CHILD REN	MISC	PERSON CAUSED * * * * *			
												TOTAL PERSON CAUSED	TOTAL ALL CAUSES	NOT IN FS	NF LAND CUT PROTECTN
BIGHORN	WYO.	NATIONAL FOREST	4	4	-	3	-	-	-	1	-	8	12	-	-
		TOTAL ALL LAND	6	4	-	3	-	-	-	1	-	8	14	2	-
BLACK HILLS	S.DAK.	NATIONAL FOREST	40	4	-	5	1	-	4	2	1	17	57	-	-
		TOTAL ALL LAND	49	6	-	6	5	-	8	3	1	29	78	21	-
	WYO.	NATIONAL FOREST	8	-	1	-	-	-	2	-	-	3	11	-	-
		TOTAL ALL LAND	11	-	1	-	-	-	2	-	1	4	15	3	1
GRD MESA-UNC & GUNN	COLO.	NATIONAL FOREST	15	2	-	1	-	-	-	-	-	3	18	-	-
		TOTAL ALL LAND	15	2	-	1	-	-	-	-	-	3	18	-	-
MEDICINE BOW	WYO.	NATIONAL FOREST	14	2	2	-	-	-	-	-	-	4	18	-	-
		TOTAL ALL LAND	15	2	2	-	-	-	-	-	-	4	19	1	-
NEBRASKA	NEBR.	NATIONAL FOREST	11	1	-	-	-	-	-	-	-	1	12	-	-
		TOTAL ALL LAND	14	3	-	-	-	-	-	-	1	4	18	-	6
	S.DAK.	NATIONAL FOREST	3	-	-	-	-	-	-	-	2	2	5	-	-
		TOTAL ALL LAND	5	-	-	-	-	1	-	-	3	4	9	4	-
RIO GRANDE	COLO.	NATIONAL FOREST	3	-	-	2	-	-	-	-	-	2	5	-	-
		TOTAL ALL LAND	5	-	-	2	-	-	-	-	-	2	7	1	1
ARAPAHO & ROOSEVELT	COLO.	NATIONAL FOREST	11	1	2	10	-	-	-	-	-	13	24	-	-
		TOTAL ALL LAND	13	1	2	10	1	-	-	-	-	14	27	3	-
ROUTT	COLO.	NATIONAL FOREST	2	-	-	1	-	-	-	-	-	1	3	-	-
		TOTAL ALL LAND	2	-	-	1	-	-	-	-	-	1	3	-	-
PIKE & SAN ISABEL	COLO.	NATIONAL FOREST	47	-	5	19	3	-	-	2	-	29	76	-	-
		TOTAL ALL LAND	54	-	6	19	4	-	1	2	-	32	86	10	-
	KANSAS	NATIONAL FOREST	1	-	-	-	-	-	-	-	-	-	1	-	-
		TOTAL ALL LAND	1	-	-	-	-	-	-	-	-	-	1	-	-
SAN JUAN	COLO.	NATIONAL FOREST	25	1	1	1	-	-	-	-	-	3	28	-	-
		TOTAL ALL LAND	25	1	1	1	-	-	-	-	-	3	28	-	-
SHOSHONE	WYO.	NATIONAL FOREST	6	-	1	7	-	-	-	-	1	9	15	-	-
		TOTAL ALL LAND	6	-	1	7	-	-	-	-	2	10	16	1	-
WHITE RIVER	COLO.	NATIONAL FOREST	5	-	-	2	-	-	-	-	-	2	7	-	-
		TOTAL ALL LAND	5	-	-	3	-	-	-	-	1	4	9	1	1
REGION 02 TOTAL		NATIONAL FOREST	195	15	12	51	4	-	6	5	4	97	292	-	-
		TOTAL ALL LAND	226	19	13	53	10	1	11	6	9	122	348	47	9

FOREST	STATE		PERSON CAUSED									TOTAL PERSON CAUSED	TOTAL ALL CAUSES	NOT IN FS	NF LAND CUT PROTECTN
			LIGHTNING	EQUIP	SMOKING	CAMP FIRE	DEBRIS BURNING	RAIL ROAD	INCENDIARY	CHILDREN	MISC				
APACHE	ARIZ.	NATIONAL FOREST	171	2	12	38	2	-	2	5	1	62	233	-	-
		TOTAL ALL LAND	172	2	14	39	5	-	2	5	1	68	240	7	-
CARSON	N.M.	NATIONAL FOREST	35	1	2	2	2	-	2	-	-	9	44	-	-
		TOTAL ALL LAND	36	1	2	2	2	-	3	-	-	10	46	2	-
CIBOLA	N.M.	NATIONAL FOREST	60	1	6	1	-	-	1	1	-	10	70	-	-
		TOTAL ALL LAND	60	1	6	1	-	-	2	1	-	11	71	1	-
	OKLA.	NATIONAL FOREST	1	-	-	-	-	-	-	-	-	-	1	-	-
		TOTAL ALL LAND	1	-	-	-	-	-	-	-	-	-	1	-	-
TEXAS	NATIONAL FOREST	NATIONAL FOREST	1	-	-	1	-	-	-	-	-	1	2	-	-
		TOTAL ALL LAND	1	1	-	1	-	-	-	-	-	2	3	1	-
COCONINO	ARIZ.	NATIONAL FOREST	256	11	23	62	6	2	6	6	-	116	372	-	-
		TOTAL ALL LAND	267	14	29	73	10	2	7	10	-	145	412	40	-
CORONA00	ARIZ.	NATIONAL FOREST	65	2	3	14	-	-	3	1	-	23	88	-	-
		TOTAL ALL LAND	67	4	3	15	1	-	3	1	-	27	94	6	-
GILA	N.M.	NATIONAL FOREST	252	3	4	7	1	-	-	-	-	15	267	-	-
		TOTAL ALL LAND	252	3	4	7	1	-	-	-	-	15	267	-	-
KAIBAB	ARIZ.	NATIONAL FOREST	128	7	7	16	-	1	2	-	1	34	162	-	-
		TOTAL ALL LAND	130	7	7	18	1	2	2	1	1	39	169	7	-
LINCOLN	N.M.	NATIONAL FOREST	15	4	3	3	-	-	1	-	-	11	26	-	-
		TOTAL ALL LAND	16	8	4	3	-	-	1	2	-	18	34	8	-
PRESCOTT	ARIZ.	NATIONAL FOREST	40	8	2	10	-	-	4	-	-	24	64	-	-
		TOTAL ALL LAND	41	10	3	11	2	-	7	1	-	34	75	11	-
SANTA FE	N.M.	NATIONAL FOREST	71	2	4	4	1	-	1	2	-	14	85	-	-
		TOTAL ALL LAND	71	2	4	4	1	-	1	2	-	14	85	-	-
TONT0	ARIZ.	NATIONAL FOREST	187	36	17	35	6	1	25	11	-	131	318	-	-
		TOTAL ALL LAND	189	41	19	39	9	1	27	12	-	148	337	17	2
REGION 03 TOTAL		NATIONAL FOREST	1282	77	83	193	18	4	47	26	2	450	1732	-	-
		TOTAL ALL LAND	1303	94	95	213	32	5	55	35	2	531	1834	100	2



Sanderson Fire, Kaibab National Forest, Region 3.

TABLE 1A

NUMBER OF WILDFIRES BY STATISTICAL CAUSES

ANNUAL FIRE REPORT 1984

FOREST	STATE		PERSON CAUSED									TOTAL PERSON CAUSED	TOTAL ALL CAUSES	NOT IN FS	NF LAND CLT PROTECTN
			LIGHTNING	EQUIP	SMOKING	CAMP FIRE	DEBRIS BURNING	RAIL ROAD	INCEN DIARY	CHILD REN	MISC				
ASHLEY	UTAH	NATIONAL FOREST	22	1	2	11	-	-	-	-	1	15	37	-	-
		TOTAL ALL LAND	22	2	2	11	-	-	-	-	1	16	38	1	-
	WYO.	NATIONAL FOREST	1	-	-	-	-	-	-	-	-	-	1	-	-
		TOTAL ALL LAND	1	-	-	-	-	-	-	-	-	-	1	-	-
BOISE	IDAHU	NATIONAL FOREST	116	1	6	6	1	-	1	-	-	15	131	-	-
		TOTAL ALL LAND	133	1	6	6	2	-	1	-	1	17	150	18	1
BRIDGER	WYO.	NATIONAL FOREST	13	4	-	8	-	-	-	-	2	14	27	-	-
		TOTAL ALL LAND	14	4	1	8	-	-	-	-	3	16	30	2	1
CARIBOU	IDAHU	NATIONAL FOREST	7	2	-	1	-	-	-	-	-	3	10	-	-
		TOTAL ALL LAND	7	2	-	1	1	-	-	-	-	4	11	1	-
CHALLIS	IDAHU	NATIONAL FOREST	12	1	1	1	1	-	-	-	-	4	16	-	-
		TOTAL ALL LAND	14	1	2	1	3	-	-	-	1	8	22	6	-
DIXIE	UTAH	NATIONAL FOREST	45	1	2	8	1	-	1	1	-	14	59	-	-
		TOTAL ALL LAND	46	1	2	8	2	-	1	1	-	15	61	2	-
FISHLAKE	UTAH	NATIONAL FOREST	21	-	-	-	-	-	-	-	-	-	21	-	-
		TOTAL ALL LAND	21	-	-	-	-	-	-	-	-	-	21	-	-
HUMBOLDT	NEVADA	NATIONAL FOREST	7	-	-	1	-	-	-	-	-	1	8	-	-
		TOTAL ALL LAND	7	1	-	1	1	-	-	-	-	3	10	-	2
MANTI-LASAL	UTAH	NATIONAL FOREST	17	1	-	-	-	-	-	-	-	1	18	-	-
		TOTAL ALL LAND	18	1	-	-	-	-	-	-	-	1	19	1	-
PAYETTE	IDAHU	NATIONAL FOREST	69	2	2	3	1	-	-	-	-	8	77	-	-
		TOTAL ALL LAND	71	3	2	3	1	-	-	-	-	9	80	2	1
SALMON	IDAHU	NATIONAL FOREST	34	-	-	1	1	-	-	-	-	2	36	-	-
		TOTAL ALL LAND	34	-	-	1	1	-	-	-	-	2	36	-	-
SAWTOOTH	IDAHU	NATIONAL FOREST	16	1	1	3	-	-	-	-	-	5	21	-	-
		TOTAL ALL LAND	16	1	1	3	-	-	-	-	-	5	21	-	-
	UTAH	NATIONAL FOREST	1	-	-	-	-	-	-	-	-	-	1	-	-
		TOTAL ALL LAND	1	-	-	-	-	-	-	-	-	-	1	-	-
TARGHEE	IDAHU	NATIONAL FOREST	3	-	-	5	1	-	-	-	-	6	9	-	-
		TOTAL ALL LAND	4	-	-	5	1	-	-	-	-	6	10	1	-
	WYO.	NATIONAL FOREST	4	-	-	3	-	-	-	-	-	3	7	-	-
		TOTAL ALL LAND	4	-	-	3	-	-	-	-	-	3	7	-	-
TOIYABE	CALIF	NATIONAL FOREST	44	1	4	6	1	-	7	-	-	19	63	-	-
		TOTAL ALL LAND	50	2	4	8	4	1	10	1	1	31	81	16	2
	NEVADA	NATIONAL FOREST	35	3	-	5	1	-	3	1	1	14	49	-	-
		TOTAL ALL LAND	37	4	-	5	1	-	3	1	2	16	53	4	-
UINTA	UTAH	NATIONAL FOREST	19	1	-	1	-	1	-	1	-	4	23	-	-
		TOTAL ALL LAND	20	2	-	1	1	1	1	1	-	7	27	4	-
WASATCH	UTAH	NATIONAL FOREST	5	-	1	2	-	1	1	1	-	6	11	-	-
		TOTAL ALL LAND	5	-	1	2	-	1	1	3	-	8	13	-	2
REGION 04 TOTAL		NATIONAL FOREST	491	19	19	65	8	2	13	4	4	134	625	-	-
		TOTAL ALL LAND	525	25	21	67	18	3	17	7	9	167	692	58	9

TABLE 1A

NUMBER OF WILDFIRES BY STATISTICAL CAUSES

ANNUAL FIRE REPORT 1984

FOREST	STATE		LIGHT- NING	EQUIP	SMOK ING	CAMP FIRE	DEBRIS BURNING	RAIL ROAD	INCEN DIARY	CHILD REN	MISC	PERSON CAUSED *			
												TOTAL PERSON CAUSED	TOTAL ALL CAUSES	NCT IN FS	NF CLT PROTECTN
ANGELES	CALIF.	NATIONAL FOREST	28	12	8	16	3	-	23	2	16	80	108	-	-
		TOTAL ALL LAND	37	31	10	18	7	-	41	6	21	134	171	29	34
CLEVELAND	CALIF.	NATIONAL FOREST	23	1	2	8	-	-	9	-	4	24	47	-	-
		TOTAL ALL LAND	34	6	6	14	2	-	22	7	28	85	119	29	43
ELDORADO	CALIF.	NATIONAL FOREST	34	5	5	14	1	-	7	1	4	37	71	-	-
		TOTAL ALL LAND	42	7	6	15	2	-	9	1	8	48	90	19	-
INYO	CALIF.	NATIONAL FOREST	87	-	3	8	-	-	2	1	9	23	110	-	-
		TOTAL ALL LAND	88	1	4	8	-	-	4	1	11	29	117	7	-
KLAMATH	CALIF.	NATIONAL FOREST	80	3	3	6	2	7	2	-	1	24	104	-	-
		TOTAL ALL LAND	104	4	3	7	4	8	3	1	3	33	137	32	1
LASSEN	CALIF.	NATIONAL FOREST	47	4	9	8	2	-	3	-	1	27	74	-	-
		TOTAL ALL LAND	63	5	10	11	2	-	3	4	5	40	103	27	2
LOS PADRES	CALIF.	NATIONAL FOREST	31	2	1	11	-	-	10	-	8	32	63	-	-
		TOTAL ALL LAND	36	5	3	14	4	-	21	1	13	61	97	24	10
MENDOCINO	CALIF.	NATIONAL FOREST	50	1	2	1	-	-	-	-	4	8	58	-	-
		TOTAL ALL LAND	61	4	2	2	1	-	1	1	6	17	76	20	-
MODOC	CALIF.	NATIONAL FOREST	98	2	3	1	1	-	1	1	1	10	108	-	-
		TOTAL ALL LAND	101	2	4	1	2	-	1	1	3	14	115	6	1
SIX RIVERS	CALIF.	NATIONAL FOREST	43	2	5	1	2	-	9	2	3	24	67	-	-
		TOTAL ALL LAND	50	4	5	2	2	-	12	4	8	37	87	20	-
PLUMAS	CALIF.	NATIONAL FOREST	110	2	6	6	2	1	13	2	8	40	150	-	-
		TOTAL ALL LAND	136	5	9	9	4	3	18	7	18	73	209	57	2
SAN BERNARDINO	CALIF.	NATIONAL FOREST	84	13	11	15	1	4	12	8	13	77	161	-	-
		TOTAL ALL LAND	115	25	16	18	1	5	22	28	52	167	282	115	6
SEQUOIA	CALIF.	NATIONAL FOREST	166	7	5	12	-	-	3	1	11	39	205	-	-
		TOTAL ALL LAND	173	20	5	15	4	-	10	5	15	74	247	17	25
SHASTA	CALIF.	NATIONAL FOREST	109	1	11	8	7	2	-	1	13	43	152	-	-
		TOTAL ALL LAND	142	7	19	11	15	4	2	12	36	106	248	91	5
SIERRA	CALIF.	NATIONAL FOREST	112	10	8	12	-	-	3	3	5	41	153	-	-
		TOTAL ALL LAND	115	21	10	13	4	-	35	7	16	106	221	53	15
STANISLAUS	CALIF.	NATIONAL FOREST	94	1	12	27	7	-	4	1	3	55	149	-	-
		TOTAL ALL LAND	100	4	15	28	11	-	7	2	4	71	171	20	2
TAHOE	CALIF.	NATIONAL FOREST	52	2	8	12	1	-	14	2	3	42	94	-	-
		TOTAL ALL LAND	86	2	13	23	4	-	20	10	11	83	169	74	1
TAHOE BASIN MGMT	CALIF.	NATIONAL FOREST	10	1	9	12	1	-	2	5	-	30	40	-	-
		TOTAL ALL LAND	11	3	12	14	7	-	3	12	5	56	67	27	-
	NEV.	NATIONAL FOREST	1	-	2	6	-	-	-	1	3	12	13	-	-
		TOTAL ALL LAND	1	-	2	7	1	-	1	1	3	15	16	2	1
REGION 05 TOTAL		NATIONAL FOREST	1259	69	113	184	30	14	117	31	110	668	1527	-	-
		TOTAL ALL LAND	1495	156	154	230	77	20	235	111	266	1249	2744	669	148

FOREST	STATE		PERSON CAUSED									TOTAL PERSON CAUSED	TOTAL ALL CAUSES	NOT IN FS	NF LAND CLT PROTECTN
			LIGHTNING	EQUIP	SMCKING	CAMP FIRE	DEBKIS BURNING	RAIL ROAD	INCEN DIARY	CHILREN	MISC				
DESCHUTES	ORE.	NATIONAL FOREST	57	4	7	19	4	-	2	3	14	53	110	-	-
		TOTAL ALL LAND	57	4	7	19	4	-	2	3	17	56	113	3	-
FREMONT	ORE.	NATIONAL FOREST	38	2	2	3	1	-	-	-	1	9	47	-	-
		TOTAL ALL LAND	38	2	2	3	1	-	-	-	1	9	47	-	-
GIFFORD PINCHOT	WASH.	NATIONAL FOREST	15	-	7	5	6	-	2	-	2	22	37	-	-
		TOTAL ALL LAND	15	-	7	6	6	-	2	-	2	23	38	1	-
MALHEUR	ORE.	NATIONAL FOREST	107	2	2	5	3	-	-	-	1	13	120	-	-
		TOTAL ALL LAND	107	2	2	5	3	-	-	-	1	13	120	-	-
MT BAKER	WASH.	NATIONAL FOREST	9	-	3	6	-	2	1	1	2	15	24	-	-
		TOTAL ALL LAND	9	-	3	6	-	2	1	1	2	15	24	-	-
MT HOOD	ORE.	NATIONAL FOREST	9	1	13	13	3	-	-	-	10	40	49	-	-
		TOTAL ALL LAND	9	1	13	13	3	-	-	-	10	40	49	-	-
OCHOCO	ORE.	NATIONAL FOREST	92	2	1	6	3	-	-	-	3	15	107	-	-
		TOTAL ALL LAND	93	2	1	6	3	-	-	-	3	15	108	1	-
OKANOAGAN	WASH.	NATIONAL FOREST	66	-	1	9	-	-	-	-	3	13	79	-	-
		TOTAL ALL LAND	68	-	1	9	-	-	-	-	3	13	81	1	1
OLYMPIC	WASH.	NATIONAL FOREST	3	1	2	12	4	-	-	-	-	19	22	-	-
		TOTAL ALL LAND	3	1	2	13	5	-	-	-	-	21	24	2	-
ROGUE RIVER	CALIF.	NATIONAL FOREST	1	-	-	-	-	-	-	-	-	-	1	-	-
		TOTAL ALL LAND	1	-	-	-	-	-	-	-	-	-	1	-	-
	ORE.	NATIONAL FOREST	24	-	2	4	1	-	-	1	4	12	36	-	-
		TOTAL ALL LAND	25	-	2	4	1	-	-	1	5	13	38	1	1
SISKIYOU	CALIF.	NATIONAL FOREST	-	-	-	1	1	-	-	-	-	2	2	-	-
		TOTAL ALL LAND	-	-	-	1	1	-	-	-	-	2	2	-	-
	ORE.	NATIONAL FOREST	6	2	4	2	1	-	-	-	2	11	17	-	-
		TOTAL ALL LAND	8	2	4	2	1	-	-	-	2	11	19	2	-
SIUSLAW	ORE.	NATIONAL FOREST	6	1	-	2	3	-	-	-	1	7	13	-	-
		TOTAL ALL LAND	6	1	-	2	3	-	-	-	1	7	13	-	-
UMATILLA	ORE.	NATIONAL FOREST	71	2	1	13	-	-	-	-	2	16	89	-	-
		TOTAL ALL LAND	71	2	1	13	-	-	-	-	2	18	89	-	-
	WASH.	NATIONAL FOREST	16	-	-	1	2	-	-	-	2	5	21	-	-
		TOTAL ALL LAND	16	-	-	1	2	-	-	-	2	5	21	-	-
UMPQUA	ORE.	NATIONAL FOREST	16	2	2	4	2	-	2	-	5	17	33	-	-
		TOTAL ALL LAND	16	2	2	4	2	-	2	-	5	17	33	-	-
WALLOWA WHITMAN	IDAHO	NATIONAL FOREST	8	-	-	-	-	-	-	-	-	-	8	-	-
		TOTAL ALL LAND	8	-	-	-	-	-	-	-	-	-	8	-	-
	ORE.	NATIONAL FOREST	79	3	-	4	1	1	-	1	-	10	89	-	-
		TOTAL ALL LAND	79	3	-	4	1	1	-	1	-	10	89	-	-
WENATCHEE	WASH.	NATIONAL FOREST	76	4	4	22	5	-	1	2	6	44	120	-	-
		TOTAL ALL LAND	76	4	4	22	5	-	1	2	7	45	121	-	1
WILLAMETE	ORE.	NATIONAL FOREST	27	2	4	13	5	-	-	1	4	29	56	-	-
		TOTAL ALL LAND	27	2	4	13	5	-	-	1	4	29	56	-	-
WINEMA	ORE.	NATIONAL FOREST	52	6	1	5	3	-	-	-	7	22	74	-	-
		TOTAL ALL LAND	52	6	1	5	3	-	-	-	8	23	75	-	1
COLVILLE	WASH.	NATIONAL FOREST	40	4	1	1	1	-	1	-	-	8	48	-	-
		TOTAL ALL LAND	40	4	1	1	1	-	1	-	-	8	48	-	-
REGION 06 TOTAL		NATIONAL FOREST	818	38	57	150	49	3	9	9	69	384	1202	-	-
		TOTAL ALL LAND	824	38	57	152	50	3	9	9	75	393	1217	11	4

TABLE 1A

NUMBER OF WILDFIRES BY STATISTICAL CAUSES

ANNUAL FIRE REPORT 1984

FOREST	STATE		PERSON CAUSED									TOTAL PERSON CAUSED	TOTAL ALL CAUSES	NOT IN FS	NF LAND CLT PROTECTN
			LIGHT-NING	EQUIP	SMCK ING	CAMP FIRE	DEBRIS BURNING	RAIL ROAD	INCEN DIARY	CHILDR EN	MISC				
ALABAMA	ALA.	NATIONAL FOREST	5	1	1	3	3	2	34	1	7	52	57	-	-
		TOTAL ALL LAND	5	2	1	3	9	3	50	1	10	79	84	25	2
DANIEL BOONE	KY.	NATIONAL FOREST	4	1	1	5	1	-	39	2	2	51	55	-	-
		TOTAL ALL LAND	4	1	1	5	4	-	45	2	7	65	69	14	-
CHATTAHOOCHEE-OCONEE	GA.	NATIONAL FOREST	1	-	2	2	2	1	54	1	14	76	77	-	-
		TOTAL ALL LAND	1	-	2	3	18	3	71	2	19	118	119	36	6
CHEROKEE	TENN.	NATIONAL FOREST	10	1	-	-	1	1	72	-	3	78	88	-	-
		TOTAL ALL LAND	10	1	-	-	3	1	85	-	4	94	104	16	-
FLORIDA	FLA.	NATIONAL FOREST	17	8	3	7	3	-	20	3	12	56	73	-	-
		TOTAL ALL LAND	17	8	3	7	7	1	22	6	14	68	85	12	-
KISATCHIE	LA.	NATIONAL FOREST	-	-	1	1	3	-	55	-	7	67	67	-	-
		TOTAL ALL LAND	-	-	1	1	11	-	75	-	10	98	98	28	3
MISSISSIPPI	MISS.	NATIONAL FOREST	4	3	-	2	2	-	175	1	32	215	219	-	-
		TOTAL ALL LAND	5	3	2	2	11	-	221	1	41	281	286	67	-
GEORGE WASHINGTON	VA.	NATIONAL FOREST	11	3	-	-	-	-	5	-	5	13	24	-	-
		TOTAL ALL LAND	13	3	1	-	1	-	7	-	6	18	31	7	-
	W.VA.	NATIONAL FOREST	1	-	1	-	-	-	-	-	-	1	2	-	-
		TOTAL ALL LAND	2	-	1	-	-	-	-	-	-	1	3	1	-
OUACHITA	ARK.	NATIONAL FOREST	24	6	1	1	1	-	17	-	6	32	56	-	-
		TOTAL ALL LAND	26	7	2	1	7	-	18	-	13	48	74	17	1
	OKLA.	NATIONAL FOREST	7	-	-	-	-	-	7	-	5	12	19	-	-
		TOTAL ALL LAND	7	-	1	-	5	-	14	-	8	28	35	12	4
OZARK SAINT FRANCIS	ARK.	NATIONAL FOREST	5	-	2	-	1	-	30	-	7	40	45	-	-
		TOTAL ALL LAND	6	-	2	-	2	-	38	-	7	49	55	8	2
NORTH CAROLINA	N.C.	NATIONAL FOREST	-	-	2	4	7	-	28	1	5	47	47	-	-
		TOTAL ALL LAND	1	2	4	4	21	7	50	3	12	103	104	57	-
FRAN. MARION&SUMTER	S.C.	NATIONAL FOREST	-	-	3	-	1	-	37	1	5	47	47	-	-
		TOTAL ALL LAND	-	1	4	-	7	2	50	2	6	72	72	25	-
TEXAS	TEX.	NATIONAL FOREST	3	5	8	14	2	2	33	2	9	75	78	-	-
		TOTAL ALL LAND	3	5	9	14	7	2	35	3	13	88	91	13	-
JEFFERSON	VA.	NATIONAL FOREST	1	-	4	2	-	1	12	1	6	26	27	-	-
		TOTAL ALL LAND	1	-	4	2	1	2	13	1	6	29	30	3	-
REGION 06 TOTAL		NATIONAL FOREST	93	28	29	41	27	7	618	13	125	888	981	-	-
		TOTAL ALL LAND	101	33	38	42	114	21	794	21	176	1239	1340	341	18

TABLE 1A

NUMBER OF WILDFIRES BY STATISTICAL CAUSES

ANNUAL FIRE REPORT 1934

FOREST	STATE		PERSON CAUSED									TOTAL PERSON CAUSED	TOTAL ALL CAUSES	NCT IN FS	NF LAND CUT PROTECTN
			LIGHT-NING	EQUIP	SMOKING	CAMP FIRE	DEBRIS BURNING	RAIL ROAD	INCEN DIARY	CHILD REN	MISC				
CHEQUAMEGON	WIS.	NATIONAL FOREST	-	-	-	-	-	-	3	-	-	3	3	-	-
		TOTAL ALL LAND	1	-	-	-	-	-	3	1	-	4	5	2	-
CHIPPEWA	MINN.	NATIONAL FOREST	1	-	2	-	1	9	4	4	-	20	21	-	-
		TOTAL ALL LAND	1	1	2	-	4	11	20	8	1	47	48	26	1
HURON MANISTEE	MICH.	NATIONAL FOREST	-	5	5	6	1	-	7	1	-	25	25	-	-
		TOTAL ALL LAND	-	7	13	9	11	1	9	3	-	53	53	26	2
MARK TWAIN	MO.	NATIONAL FOREST	1	11	5	2	3	-	96	1	-	118	119	-	-
		TOTAL ALL LAND	1	13	7	5	17	-	111	3	-	156	157	38	-
NICOLET	WIS.	NATIONAL FOREST	-	1	-	1	-	-	2	-	2	6	6	-	-
		TOTAL ALL LAND	-	6	-	2	1	-	6	2	2	19	19	12	1
OTTAWA	MICH.	NATIONAL FOREST	-	-	-	-	1	-	-	-	-	1	1	-	-
		TOTAL ALL LAND	1	-	-	-	4	-	-	-	1	5	6	4	1
SHAWNEE	ILL.	NATIONAL FOREST	-	1	-	-	-	-	-	-	-	1	1	-	-
		TOTAL ALL LAND	-	1	-	1	8	-	3	-	-	13	13	10	2
SUPERIOR	MINN.	NATIONAL FOREST	5	-	5	15	3	1	-	2	-	26	31	-	-
		TOTAL ALL LAND	6	3	7	19	6	3	-	4	-	42	48	17	-
HIAWATHA	MICH.	NATIONAL FOREST	1	3	5	2	1	-	-	-	-	11	12	-	-
		TOTAL ALL LAND	1	3	6	3	5	1	-	2	1	21	22	10	-
WAYNE-HOOSIER	INO.	NATIONAL FOREST	-	-	-	1	-	-	1	-	-	2	2	-	-
		TOTAL ALL LAND	-	-	-	1	2	-	1	-	-	4	4	2	-
	OHIO	NATIONAL FOREST	-	-	-	-	-	-	16	-	-	16	16	-	-
		TOTAL ALL LAND	-	1	1	-	12	-	68	-	3	85	85	69	-
ALLEGHENY	PA.	NATIONAL FOREST	1	3	1	1	-	-	-	-	-	5	6	-	-
		TOTAL ALL LAND	1	4	1	1	-	-	-	-	-	6	7	1	-
MONONGAMELA	W.VA.	NATIONAL FOREST	-	-	-	-	-	-	5	-	-	5	5	-	-
		TOTAL ALL LAND	1	-	-	-	1	-	6	-	-	7	8	2	1
WHITE MOUNTAIN	MAINE	NATIONAL FOREST	1	-	1	-	-	-	-	-	-	1	2	-	-
		TOTAL ALL LAND	1	-	1	-	-	-	-	-	-	1	2	-	-
	N.H.	NATIONAL FOREST	-	-	2	16	1	-	-	-	-	19	19	-	-
		TOTAL ALL LAND	-	-	2	16	1	2	-	-	-	21	21	2	-
REGION 09 TOTAL	NATIONAL FOREST		10	24	26	44	11	10	134	8	2	259	269	-	-
	TOTAL ALL LAND		14	39	40	57	72	18	227	23	8	484	498	221	8

FOREST	STATE		PERSON CAUSED										TOTAL PERSON CAUSED	TOTAL ALL CAUSES	NOT IN FS	NF LAND CUT PROTECTN
			LIGHTNING	EQUIP	SMCKING	CAMP FIRE	DEBRIS BURNING	RAIL ROAD	INCEN DIARY	CHILD REN	MISC	7				
STIKINE TONGASS	ALASKA	NATIONAL FOREST	-	-	-	1	-	-	-	-	-	-	1	1	-	-
		TOTAL ALL LAND	-	-	-	2	-	-	-	-	-	-	2	2	1	-
CHATHAM TONGASS	ALASKA	NATIONAL FOREST	-	-	-	4	-	-	-	-	-	-	4	4	-	-
		TOTAL ALL LAND	-	-	-	5	-	-	-	-	-	-	5	5	1	-
CHUGACH	ALASKA	NATIONAL FOREST	-	-	1	1	-	1	-	1	6	10	10	-	-	
		TOTAL ALL LAND	-	-	1	1	1	1	1	2	6	13	13	3	-	
REGION 10 TOTAL		NATIONAL FOREST	-	-	1	6	-	1	-	1	6	15	15	-	-	
		TOTAL ALL LAND	-	-	1	8	1	1	1	2	6	20	20	5	-	
ALL REGIONS TOTAL		NATIONAL FOREST	5158	293	367	801	173	41	953	102	364	3094	8252	-	-	
		TOTAL ALL LAND	5597	443	459	902	434	85	1360	226	621	4530	10127	1667	208	



Rail Fire, started August 13, 1984 on the Modoc National Forest, Region 5.

TABLE 1B

NUMBER OF WILDFIRES BY STATISTICAL CAUSES

ANNUAL FIRE REPORT 1984

STATE		PERSON CAUSED									TOTAL PERSON CAUSED	TOTAL ALL CAUSES	NCT IN FS	NF PROTECTN	LAND CUT
		1 LIGHT- NING	2 EQUIP	3 SMOK ING	4 CAMP FIRE	5 DEBRIS BURNING	6 RAIL ROAD	7 INCEN DIARY	8 CHILO REN	9 MISC					
ALABAMA	NATIONAL FOREST	5	1	1	3	3	2	34	1	7	52	57	-	-	
	TOTAL ALL LAND	5	2	1	3	9	3	50	1	10	79	64	25	2	
ALASKA	NATIONAL FOREST	-	-	1	6	-	1	-	1	6	15	15	-	-	
	TOTAL ALL LAND	-	-	1	8	1	1	1	2	6	20	20	5	-	
ARIZONA	NATIONAL FOREST	847	66	64	175	14	4	42	23	2	390	1237	-	-	
	TOTAL ALL LAND	866	78	75	195	28	5	48	30	2	461	1327	88	2	
ARKANSAS	NATIONAL FOREST	29	6	3	1	2	-	47	-	13	72	101	-	-	
	TOTAL ALL LAND	32	7	4	1	9	-	56	-	20	97	129	25	3	
CALIFORNIA	NATIONAL FOREST	1303	70	115	165	32	14	124	30	107	677	1980	-	-	
	TOTAL ALL LAND	1545	158	156	232	81	21	244	111	264	1267	2812	683	149	
COLORADO	NATIONAL FOREST	108	4	8	36	3	-	-	2	-	53	161	-	-	
	TOTAL ALL LAND	119	4	9	37	5	-	1	2	1	59	178	15	2	
FLORIDA	NATIONAL FOREST	17	8	3	7	3	-	20	3	12	56	73	-	-	
	TOTAL ALL LAND	17	8	3	7	7	1	22	6	14	68	85	12	-	
GEORGIA	NATIONAL FOREST	1	-	2	2	2	1	54	1	14	76	77	-	-	
	TOTAL ALL LAND	1	-	2	3	18	3	71	2	19	118	119	36	6	
IDAHO	NATIONAL FOREST	796	17	17	44	11	-	5	-	12	106	902	-	-	
	TOTAL ALL LAND	850	21	20	47	22	1	5	3	17	136	986	77	7	
ILLINOIS	NATIONAL FOREST	-	1	-	-	-	-	-	-	-	1	1	-	-	
	TOTAL ALL LAND	-	1	-	1	8	-	3	-	-	13	13	10	2	
INDIANA	NATIONAL FOREST	-	-	-	1	-	-	1	-	-	2	2	-	-	
	TOTAL ALL LAND	-	-	-	1	2	-	1	-	-	4	4	2	-	
KANSAS	NATIONAL FOREST	1	-	-	-	-	-	-	-	-	-	1	-	-	
	TOTAL ALL LAND	1	-	-	-	-	-	-	-	-	-	1	-	-	
KENTUCKY	NATIONAL FOREST	4	1	1	5	1	-	39	2	2	51	55	-	-	
	TOTAL ALL LAND	4	1	1	5	4	-	45	2	7	65	69	14	-	
LOUISIANA	NATIONAL FOREST	-	-	1	1	3	-	55	-	7	67	67	-	-	
	TOTAL ALL LAND	-	-	1	1	11	-	75	-	10	98	98	28	3	
MAINE	NATIONAL FOREST	1	-	1	-	-	-	-	-	-	1	2	-	-	
	TOTAL ALL LAND	1	-	1	-	-	-	-	-	-	1	2	-	-	
MICHIGAN	NATIONAL FOREST	1	8	10	8	3	-	7	1	-	37	38	-	-	
	TOTAL ALL LAND	2	10	19	12	20	2	9	5	2	79	81	40	3	
MINNESOTA	NATIONAL FOREST	6	-	7	15	4	10	4	6	-	46	52	-	-	
	TOTAL ALL LAND	7	4	9	19	10	14	20	12	1	89	96	43	1	
MISSISSIPPI	NATIONAL FOREST	4	3	-	2	2	-	175	1	32	215	219	-	-	
	TOTAL ALL LAND	5	3	2	2	11	-	221	1	41	281	286	67	-	
MISSOURI	NATIONAL FOREST	1	11	5	2	3	-	96	1	-	118	119	-	-	
	TOTAL ALL LAND	1	13	7	5	17	-	111	3	-	156	157	38	-	

TABLE 1B

NUMBER OF WILDFIRES BY STATISTICAL CAUSES

ANNUAL FIRE REPORT 1984

STATE		PERSON CAUSED									TOTAL PERSON CAUSED	TOTAL ALL CAUSES	NOT IN FS	NF PROTECTN	LAND CUT
		LIGHT- NING	EQUIP	SMCK ING	CAMP FIRE	DEBRIS BURNING	RAIL ROAD	INCEN DIARY	CHIL REN	MISC					
MONTANA	NATIONAL FOREST	456	9	17	42	20	-	5	5	28	126	582	-	-	
	TOTAL ALL LAND	522	22	26	52	47	8	7	9	53	226	748	161	5	
NEBRASKA	NATIONAL FOREST	11	1	-	-	-	-	-	-	-	1	12	-	-	
	TOTAL ALL LAND	14	3	-	-	-	-	-	-	1	4	18	-	6	
NEVADA	NATIONAL FOREST	43	3	2	12	1	-	3	2	4	27	70	-	-	
	TOTAL ALL LAND	45	5	2	13	3	-	4	2	5	34	79	6	3	
NEW HAMPSHIRE	NATIONAL FOREST	-	-	2	16	1	-	-	-	-	19	19	-	-	
	TOTAL ALL LAND	-	-	2	16	1	2	-	-	-	21	21	2	-	
NEW MEXICO	NATIONAL FOREST	433	11	19	17	4	-	5	3	-	59	492	-	-	
	TOTAL ALL LAND	435	15	20	17	4	-	7	5	-	68	503	11	-	
NORTH CAROLINA	NATIONAL FOREST	-	-	2	4	7	-	26	1	5	47	47	-	-	
	TOTAL ALL LAND	1	2	4	4	21	7	50	3	12	103	104	57	-	
NORTH DAKOTA	NATIONAL FOREST	5	4	1	1	-	-	-	-	2	8	13	-	-	
	TOTAL ALL LAND	5	4	1	1	-	4	-	-	2	12	17	4	-	
OHIO	NATIONAL FOREST	-	-	-	-	-	-	16	-	-	16	16	-	-	
	TOTAL ALL LAND	-	1	1	-	12	-	68	-	3	85	85	69	-	
OKLAHOMA	NATIONAL FOREST	8	-	-	-	-	-	7	-	5	12	20	-	-	
	TOTAL ALL LAND	8	-	1	-	5	-	14	-	8	28	36	12	4	
OREGON	NATIONAL FOREST	584	29	39	93	30	1	4	6	54	256	840	-	-	
	TOTAL ALL LAND	588	29	39	93	30	1	4	6	59	261	849	7	2	
PENNSYLVANIA	NATIONAL FOREST	1	3	1	1	-	-	-	-	-	5	6	-	-	
	TOTAL ALL LAND	1	4	1	1	-	-	-	-	-	6	7	1	-	
SOUTH CAROLINA	NATIONAL FOREST	-	-	3	-	1	-	37	1	5	47	47	-	-	
	TOTAL ALL LAND	-	1	4	-	7	2	50	2	6	72	72	25	-	
SOUTH DAKOTA	NATIONAL FOREST	43	4	-	5	1	-	4	2	3	19	62	-	-	
	TOTAL ALL LAND	54	6	-	6	5	1	8	3	4	33	87	25	-	
TENNESSEE	NATIONAL FOREST	10	1	-	-	1	1	72	-	3	78	88	-	-	
	TOTAL ALL LAND	10	1	-	-	3	1	85	-	4	94	104	16	-	
TEXAS	NATIONAL FOREST	4	5	8	15	2	2	33	2	9	76	80	-	-	
	TOTAL ALL LAND	4	6	9	15	7	2	35	3	13	90	94	14	-	
UTAH	NATIONAL FOREST	130	4	5	22	1	2	2	3	1	40	170	-	-	
	TOTAL ALL LAND	133	6	5	22	3	2	3	5	1	47	180	8	2	
VIRGINIA	NATIONAL FOREST	12	3	4	2	-	1	17	1	11	39	51	-	-	
	TOTAL ALL LAND	14	3	5	2	2	2	20	1	12	47	61	10	-	
WASHINGTON	NATIONAL FOREST	243	9	20	56	18	2	5	3	15	128	371	-	-	
	TOTAL ALL LAND	246	9	20	58	19	2	5	3	16	132	378	5	2	
WEST VIRGINIA	NATIONAL FOREST	1	-	1	-	-	-	5	-	-	6	7	-	-	
	TOTAL ALL LAND	3	-	1	-	1	-	6	-	-	8	11	3	1	
WISCONSIN	NATIONAL FOREST	-	1	-	1	-	-	5	-	2	9	9	-	-	
	TOTAL ALL LAND	1	6	-	2	1	-	9	3	2	23	24	14	1	
WYOMING	NATIONAL FOREST	50	10	4	21	-	-	2	1	3	41	91	-	-	
	TOTAL ALL LAND	57	10	5	21	-	-	2	1	6	45	102	9	2	

TABLE 2

NUMBER OF ACRES BURNED BY STATISTICAL CAUSES
(INSIDE PROTECTION BCUNORIES)

ANNUAL FIRE REPORT 1984

FOREST	STATE		* * * * *									TOTAL ALL
			1 LIGHT- NING	2 EQUIP	3 SMOK- ING	4 CAMP FIRE	5 DEBRIS BURNING	6 RAIL RCAO	7 INCEN- DIARY	8 CHILD REN	9 MISC	
BEAVERHEAD	MONT.	NATIONAL FOREST	-	-	-	-	1	-	-	-	-	1
		TOTAL NF AND OTHER	-	-	-	-	1	-	-	-	-	1
BITTERROOT	IDAHO	NATIONAL FOREST	42	-	-	30	-	-	-	-	-	72
		TOTAL NF AND OTHER	42	-	-	30	-	-	-	-	-	72
	MONT.	NATIONAL FOREST	13	-	1	-	2	-	-	-	50	66
		TOTAL NF AND OTHER	14	-	1	-	2	-	-	-	51	68
PAN HANDLE	IOAHO	NATIONAL FOREST	23	5	-	1	-	-	4	-	1	34
		TOTAL NF AND OTHER	31	10	-	1	-	-	4	-	1	47
	WASH.	NATIONAL FOREST	2	-	-	-	-	-	-	-	-	2
		TOTAL NF AND OTHER	2	-	-	-	-	-	-	-	-	2
CLEARWATER	IOAHO	NATIONAL FOREST	38	4	-	1	45	-	-	-	2	90
		TOTAL NF AND OTHER	40	4	-	1	45	-	-	-	2	92
CUSTER	MONT.	NATIONAL FOREST	106	91	-	-	790	-	-	-	23	1010
		TOTAL NF AND OTHER	108	620	-	-	2694	-	-	-	23	3445
	N.D.	NATIONAL FOREST	63	480	6	3	-	1	-	-	60	613
		TOTAL NF AND OTHER	63	480	6	3	-	5	-	-	60	617
DEERLODGE	MONT.	NATIONAL FOREST	2	-	-	-	-	-	-	-	1	3
		TOTAL NF AND OTHER	2	-	-	-	-	-	-	-	1	3
FLATHEAD	MONT.	NATIONAL FOREST	2	-	-	200	10	-	-	-	1164	1376
		TOTAL NF AND OTHER	2	-	-	200	11	-	-	-	4066	4279
GALLATIN	MONT.	NATIONAL FOREST	1	-	-	-	-	-	-	-	-	1
		TOTAL NF AND OTHER	1	-	-	-	-	-	-	-	-	1
HELENA	MONT.	NATIONAL FOREST	388	16910	-	46	-	-	-	-	-	17344
		TOTAL NF AND OTHER	730	26950	1	46	1	-	-	-	-	27728
KOOTENAI	IOAHO	NATIONAL FOREST	-	-	-	-	-	-	-	-	-	-
		TOTAL NF AND OTHER	-	-	-	-	-	-	-	-	-	-
	MONT.	NATIONAL FOREST	41	-	4	37	13	-	-	-	102	197
		TOTAL NF AND OTHER	50	3	4	37	77	-	4	-	132	307
LEWIS + CLARK	MONT.	NATIONAL FOREST	204	350	-	-	78	-	-	-	-	632
		TOTAL NF AND OTHER	207	350	-	-	78	-	-	-	-	635
LOLU	MONT.	NATIONAL FOREST	234	192	1	-	5	1	-	-	3	436
		TOTAL NF AND OTHER	238	317	13	-	24	1	-	-	5	598
NEZPERCE	IOAHO	NATIONAL FOREST	103	-	-	-	2	-	1	-	3	109
		TOTAL NF AND OTHER	104	-	-	-	2	-	1	-	3	110
REGION 01 TOTAL		NATIONAL FOREST	1262	18032	12	318	946	2	5	-	1409	21986
		TOTAL NF AND OTHER	1634	28734	25	316	2935	6	9	-	4344	38005

TABLE 2

NUMBER OF ACRES BURNED BY STATISTICAL CAUSES
(INSIDE PROTECTION BOUNDRIES)

ANNUAL FIRE REPORT 1984

FOREST	STATE		PERSON CAUSED										TOTAL ALL
			LIGHT- NING	EQUIP	SMOK- ING	CAMP FIRE	DEBRIS BURNING	RAIL ROAD	INCEN- DIARY	CHILD REN	MISC		
BIGHORN	WYO.	NATIONAL FOREST	-	2	-	-	-	-	-	-	225	-	227
		TOTAL NF AND OTHER	2	2	-	-	-	-	-	-	225	-	229
BLACK HILLS	S.DAK.	NATIONAL FOREST	37	8	-	41	2	-	26	4	3		121
		TOTAL NF AND OTHER	47	8	-	41	2	-	675	28	3		804
	WYO.	NATIONAL FOREST	1	-	1	-	-	-	3	-	-		5
		TOTAL NF AND OTHER	2	-	1	-	-	-	3	-	1		7
GRO MESA-GUNN & GUNN	COLO.	NATIONAL FOREST	7	1	-	-	-	-	-	-	-		8
		TOTAL NF AND OTHER	7	1	-	-	-	-	-	-	-		8
MEDICINE BOW	WYO.	NATIONAL FOREST	13	-	4	-	-	-	-	-	-		17
		TOTAL NF AND OTHER	74	-	4	-	-	-	-	-	-		78
NEBRASKA	NEBR.	NATIONAL FOREST	101	1	-	-	-	-	-	-	-		102
		TOTAL NF AND OTHER	148	96	-	-	-	-	-	-	60		304
	S.DAK.	NATIONAL FOREST	273	-	-	-	-	170	-	-	98		541
		TOTAL NF AND OTHER	429	-	-	-	-	770	-	-	158		1357
RIO GRANDE	COLO.	NATIONAL FOREST	40	-	-	35	-	-	-	-	-		75
		TOTAL NF AND OTHER	41	-	-	35	-	-	-	-	-		76
ARAPAHO & ROOSEVELT	COLO.	NATIONAL FOREST	19	-	-	66	56	-	-	-	-		161
		TOTAL NF AND OTHER	19	-	-	66	93	-	-	-	-		198
ROUTT	COLO.	NATIONAL FOREST	-	-	-	-	-	-	-	-	-		-
		TOTAL NF AND OTHER	-	-	-	-	-	-	-	-	-		-
PIKE & SAN ISABEL	COLO.	NATIONAL FOREST	379	-	5	3	2	-	-	-	-		389
		TOTAL NF AND OTHER	388	-	7	4	4	-	2	-	-		405
	KANSAS	NATIONAL FOREST	-	-	-	-	-	-	-	-	-		-
		TOTAL NF AND OTHER	-	-	-	-	-	-	-	-	-		-
SAN JUAN	COLO.	NATIONAL FOREST	10	-	-	-	-	-	-	-		10	
		TOTAL NF AND OTHER	10	-	-	-	-	-	-	-	-		10
SHOSHONE	WYO.	NATIONAL FOREST	-	-	-	9	-	-	-	-		9	
		TOTAL NF AND OTHER	-	-	-	9	-	-	-	-	-		9
WHITE RIVER	COLO.	NATIONAL FOREST	1	-	-	-	-	-	-	-		1	
		TOTAL NF AND OTHER	1	-	-	-	-	-	-	-	-		1
REGION 02 TOTAL		NATIONAL FOREST	881	12	10	174	60	170	29	229	101		1666
		TOTAL NF AND OTHER	1168	107	12	175	99	770	680	253	222		3486

FOREST	STATE		PERSON CAUSED									TOTAL ALL
			LIGHT-NING	EQUIP	SMOK-ING	CAMP FIRE	DEERIS BURNING	RAIL ROAD	INCEN-DIARY	CHILD REN	MISC	
APACHE	ARIZ.	NATIONAL FOREST	133	5	6	11	1	-	3	-	-	159
		TOTAL NF AND OTHER	133	5	7	11	6	-	3	8	-	175
CARSON	N.M.	NATIONAL FOREST	45	-	1	1	-	-	-	-	-	47
		TOTAL NF AND OTHER	45	-	1	1	-	-	2	-	-	49
CIBOLA	N.M.	NATIONAL FOREST	37	-	11	-	-	-	-	-	-	48
		TOTAL NF AND OTHER	37	-	11	-	-	-	-	-	-	48
	OKLA.	NATIONAL FOREST	1	-	-	-	-	-	-	-	-	1
		TOTAL NF AND OTHER	1	-	-	-	-	-	-	-	-	1
	TEXAS	NATIONAL FOREST	40	666	-	4	-	-	-	-	-	710
		TOTAL NF AND OTHER	40	1044	-	4	-	-	-	-	-	1088
COCONINO	ARIZ.	NATIONAL FOREST	39	36	14	35	12	1	2	20	-	159
		TOTAL NF AND OTHER	42	37	16	40	14	1	2	22	-	174
CORONA00	ARIZ.	NATIONAL FOREST	1795	33	-	21	5	-	1	-	-	1855
		TOTAL NF AND OTHER	1804	78	-	54	15	-	1	-	-	1952
GILA	N.M.	NATIONAL FOREST	210	-	914	2	1	-	-	-	-	1127
		TOTAL NF AND OTHER	210	-	914	2	1	-	-	-	-	1127
KAIBAB	ARIZ.	NATIONAL FOREST	32	1163	1	2	-	-	1	-	-	1199
		TOTAL NF AND OTHER	33	1257	1	2	-	-	1	-	-	1294
LINCOLN	N.M.	NATIONAL FOREST	7	5	-	20	-	-	1	-	-	33
		TOTAL NF AND OTHER	7	7	1	20	-	-	1	-	-	36
PRESCOTT	ARIZ.	NATIONAL FOREST	154	2	1	9	-	-	9	-	-	175
		TOTAL NF AND OTHER	167	3	2	9	2	-	9	1	-	193
SANTA FE	N.M.	NATIONAL FOREST	50	-	240	3	-	-	-	50	-	343
		TOTAL NF AND OTHER	50	-	240	3	-	-	-	50	-	343
TONTO	ARIZ.	NATIONAL FOREST	2009	232	80	152	12	6	100	69	-	2660
		TOTAL NF AND OTHER	2010	232	80	248	16	6	103	69	-	2764
REGION 03 TOTAL		NATIONAL FOREST	4552	2142	1268	260	31	7	117	139	-	8516
		TOTAL NF AND OTHER	4579	2663	1273	394	56	7	122	150	-	9244



Sanderson Fire, started June 14, 1984 on the Kaibab National Forest, Region 3.

TABLE 2

NUMBER OF ACRES BURNED BY STATISTICAL CAUSES
(INSIDE PROTECTION BOUNDARIES)

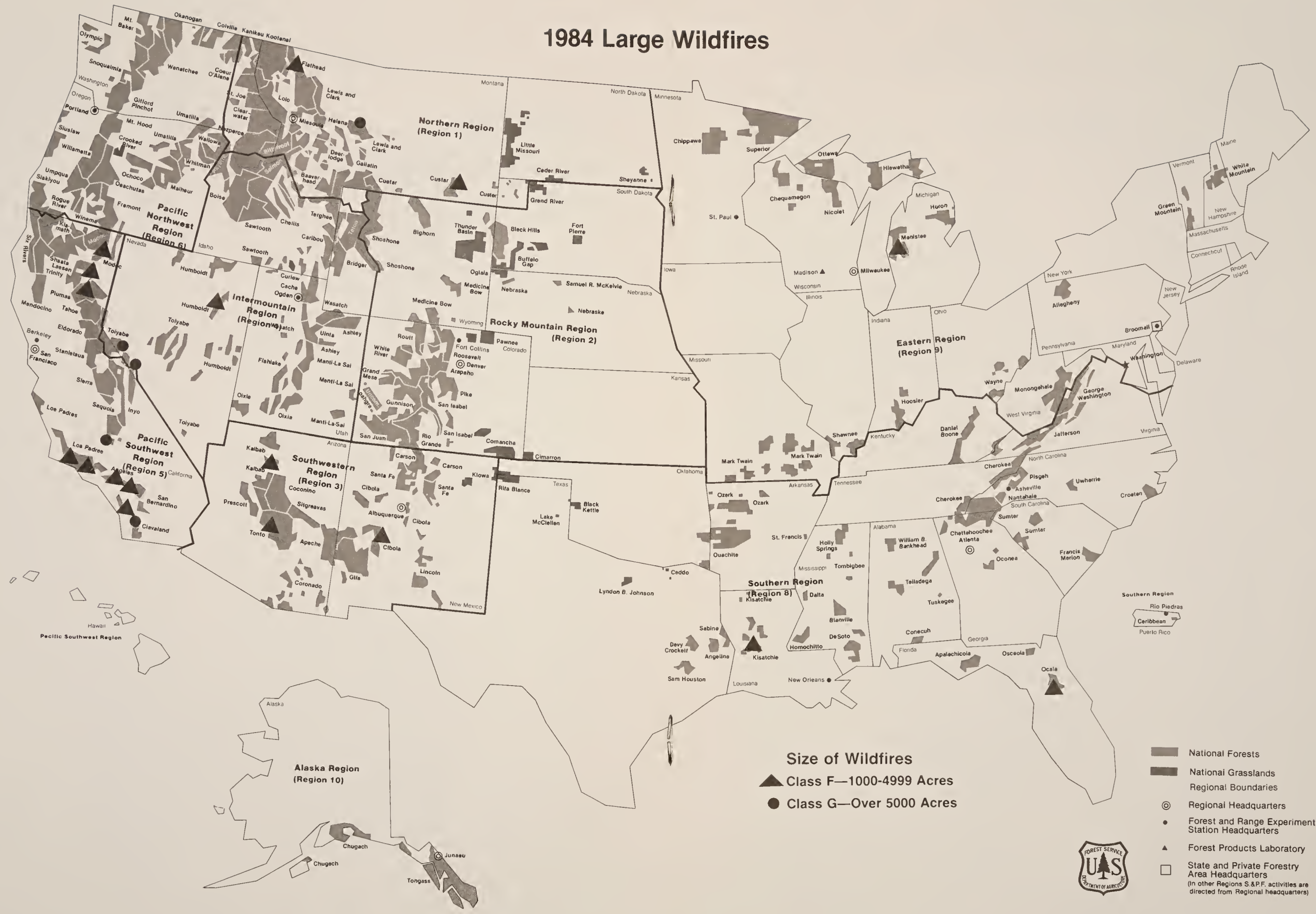
ANNUAL FIRE REPORT 1984

FOREST	STATE		* * * * * PERSON CAUSED * * * * *										TOTAL ALL
			LIGHT- NING	EQUIP	SMOK- ING	CAMP FIRE	DEBRIS BURNING	RAIL ROAD	INCEN- DIARY	CHILC REN	MISC		
ASHLEY	UTAH	NATIONAL FOREST	1	-	-	-	-	-	-	-	-	-	1
		TOTAL NF AND OTHER	1	-	-	-	-	-	-	-	-	-	1
	WYO.	NATIONAL FOREST	-	-	-	-	-	-	-	-	-	-	-
		TOTAL NF AND OTHER	-	-	-	-	-	-	-	-	-	-	-
BOISE	IDAH	NATIONAL FOREST	73	1	8	3	-	-	1	-	-	-	66
		TOTAL NF AND OTHER	78	1	8	3	3	-	1	-	-	-	94
BRIDGER	WYO.	NATIONAL FOREST	-	-	-	-	-	-	-	-	-	150	150
		TOTAL NF AND OTHER	-	-	-	-	-	-	-	-	-	150	150
CARIBOU	IDAH	NATIONAL FOREST	4	-	-	-	4	-	-	-	-	-	8
		TOTAL NF AND OTHER	4	-	-	-	4	-	-	-	-	-	8
CHALLIS	IDAH	NATIONAL FOREST	5	-	-	-	-	-	-	-	-	-	5
		TOTAL NF AND OTHER	5	-	-	-	-	-	-	-	-	-	5
OIXIE	UTAH	NATIONAL FOREST	99	-	1	337	5	-	2	-	-	-	444
		TOTAL NF AND OTHER	100	-	1	337	6	-	2	-	-	-	446
FISHLAKE	UTAH	NATIONAL FOREST	-	-	-	-	-	-	-	-	-	-	-
		TOTAL NF AND OTHER	-	-	-	-	-	-	-	-	-	-	-
HUMBOLOT	NEVADA	NATIONAL FOREST	324	700	-	-	190	-	-	-	-	-	1214
		TOTAL NF AND OTHER	324	700	-	-	190	-	-	-	-	-	1214
MANTI-LASAL	UTAH	NATIONAL FOREST	1	-	-	-	-	-	-	-	-	-	1
		TOTAL NF AND OTHER	1	-	-	-	-	-	-	-	-	-	1
PAYETTE	IDAH	NATIONAL FOREST	9	-	-	-	-	-	-	-	-	-	9
		TOTAL NF AND OTHER	9	-	-	-	-	-	-	-	-	-	9
SALMON	IDAH	NATIONAL FOREST	5	-	-	5	1	-	-	-	-	-	11
		TOTAL NF AND OTHER	5	-	-	5	1	-	-	-	-	-	11
SAWTOOTH	IDAH	NATIONAL FOREST	-	-	1	-	-	-	-	-	-	-	1
		TOTAL NF AND OTHER	-	-	1	-	-	-	-	-	-	-	1
	UTAH	NATIONAL FOREST	7	-	-	-	-	-	-	-	-	-	7
		TOTAL NF AND OTHER	7	-	-	-	-	-	-	-	-	-	7
TARGHEE	IDAH	NATIONAL FOREST	-	-	-	-	-	-	-	-	-	-	-
		TOTAL NF AND OTHER	-	-	-	-	-	-	-	-	-	-	-
	WYO.	NATIONAL FOREST	-	-	-	-	-	-	-	-	-	-	-
		TOTAL NF AND OTHER	-	-	-	-	-	-	-	-	-	-	-
TOIYABE	CALIF	NATIONAL FOREST	444	1	3787	1	-	-	2408	-	-	-	6641
		TOTAL NF AND OTHER	1650	1	9436	1	-	-	2408	-	1	-	13497
	NEVADA	NATIONAL FOREST	41	11	-	-	-	-	-	-	-	240	292
		TOTAL NF AND OTHER	47	11	-	-	-	-	-	-	-	325	383
UINTA	UTAH	NATIONAL FOREST	-	-	-	-	-	-	-	-	-	-	-
		TOTAL NF AND OTHER	-	-	-	-	1	-	2	-	-	-	3
WASATCH	UTAH	NATIONAL FOREST	-	-	-	-	-	-	2	-	-	-	2
		TOTAL NF AND OTHER	-	-	-	-	-	-	2	20	-	-	22
REGION 04 TOTAL		NATIONAL FOREST	1013	713	3797	346	200	-	2413	-	390	-	8872
		TOTAL NF AND OTHER	2251	713	9446	346	205	-	2415	20	476	-	15852

TABLE 2 NUMBER OF ACRES BURNED BY STATISTICAL CAUSES (INSIDE PROTECTION BOUNDARIES) ANNUAL FIRE REPORT 1964

FOREST	STATE		PERSON CAUSED										TOTAL ALL
			LIGHT-NING	EQUIP	SMUK-ING	CAMP FIRE	DEBRIS BURNING	RAIL RCAD	INCEN-DIARY	CHILD REN	MISC		
ANGELES	CALIF.	NATIONAL FOREST	25	38	6	201	5	-	97	-	415	787	
		TOTAL NF AND OTHER	27	209	6	211	6	-	175	5	464	1103	
CLEVELAND	CALIF.	NATIONAL FOREST	4494	-	-	65	-	-	32	-	50	4641	
		TOTAL NF AND OTHER	4676	3	-	65	-	-	34	11	55	4844	
ELOORAOU	CALIF.	NATIONAL FOREST	7	1	2	2	9	-	40	-	4	65	
		TOTAL NF AND OTHER	7	1	2	2	11	-	40	-	4	67	
INYO	CALIF.	NATIONAL FOREST	16	-	-	-	-	-	-	-	613	629	
		TOTAL NF AND OTHER	17	-	-	-	-	-	-	-	666	683	
KLAMATH	CALIF.	NATIONAL FOREST	21	1	1	49	5	-	-	-	-	77	
		TOTAL NF AND OTHER	22	2	1	121	6	-	-	-	1	153	
LASSEN	CALIF.	NATIONAL FOREST	620	1	5	96	2	-	-	-	-	724	
		TOTAL NF AND OTHER	620	1	6	156	2	-	-	1	-	786	
LOS PAORES	CALIF.	NATIONAL FOREST	982	-	-	780	-	-	217	-	121	2100	
		TOTAL NF AND OTHER	2910	10	-	780	2	-	826	-	127	4657	
MENDOCINO	CALIF.	NATIONAL FOREST	14	29	-	-	-	-	-	-	6	49	
		TOTAL NF AND OTHER	14	171	-	-	-	-	-	-	9	194	
MODUC	CALIF.	NATIONAL FOREST	166	1090	54	-	-	-	-	3	500	1813	
		TOTAL NF AND OTHER	167	4000	54	-	5	-	-	3	506	4735	
SIX RIVERS	CALIF.	NATIONAL FOREST	4	-	1	-	-	-	6	-	1	12	
		TOTAL NF AND OTHER	4	-	1	-	-	-	6	-	1	12	
PLUMAS	CALIF.	NATIONAL FOREST	170	-	1	4	6	-	250	-	90	521	
		TOTAL NF AND OTHER	1311	-	2	18	27	-	251	1	121	1731	
SAN BERNARDINO	CALIF.	NATIONAL FOREST	642	25	2	21	-	30	37	4	2059	2820	
		TOTAL NF AND OTHER	718	52	2	22	-	40	37	5	2205	3081	
SEQUOIA	CALIF.	NATIONAL FOREST	1358	61	11	15	13392	-	92	-	793	15722	
		TOTAL NF AND OTHER	1359	61	11	15	13906	-	92	-	793	16237	
SHASTA	CALIF.	NATIONAL FOREST	9	10	506	2	15	1	-	-	381	924	
		TOTAL NF AND OTHER	14	10	509	3	75	2	-	5	404	1022	
SIERRA	CALIF.	NATIONAL FOREST	485	15	63	2	-	-	13	-	56	634	
		TOTAL NF AND OTHER	485	17	63	2	1	-	16	1	56	641	
STANISLAUS	CALIF.	NATIONAL FOREST	35	40	3	1	5	-	1	-	9	100	
		TOTAL NF AND OTHER	77	46	4	1	13	-	2	-	9	152	
TAHDE	CALIF.	NATIONAL FOREST	19	-	2	3	-	-	6	-	7	37	
		TOTAL NF AND OTHER	565	-	3	5	1	-	15	5	8	602	
TAHUE BASIN MGMT	CALIF.	NATIONAL FOREST	-	-	-	1	2	-	-	-	-	3	
		TOTAL NF AND OTHER	-	-	-	1	24	-	-	-	-	25	
NEV	NEV	NATIONAL FOREST	-	-	-	-	69	-	-	-	-	69	
		TOTAL NF AND OTHER	-	-	-	-	107	-	-	-	-	107	
REGION 05 TOTAL		NATIONAL FOREST	9067	1317	657	1242	13510	31	791	7	5105	31727	
		TOTAL NF AND OTHER	12993	4583	664	1402	14166	42	1496	37	5429	40832	

1984 Large Wildfires



FOREST	STATE		* * * * * PERSON CAUSED * * * * *										TOTAL ALL
			LIGHT- NING	EQUIP	SMOK- ING	CAMP FIRE	DEBRIS BURNING	RAIL ROAD	INCEN- DIARY	CHILD REN	MISC		
DESCHUTES	ORE.	NATIONAL FOREST	5	2	1	2	581	-	-	-	825	1416	
		TOTAL NF AND OTHER	5	2	1	2	581	-	-	-	1017	1608	
FREMONT	ORE.	NATIONAL FOREST	19	1	1	-	49	-	-	-	-	70	
		TOTAL NF AND OTHER	20	1	1	-	49	-	-	-	-	71	
GIFFORD PINCHOT	WASH.	NATIONAL FOREST	13	-	-	-	260	-	-	-	-	273	
		TOTAL NF AND OTHER	13	-	-	-	260	-	-	-	-	273	
MALHEUR	ORE.	NATIONAL FOREST	9	-	3	2	4	-	-	-	-	18	
		TOTAL NF AND OTHER	9	-	3	2	4	-	-	-	-	18	
MT BAKER	WASH.	NATIONAL FOREST	1	-	1	-	-	-	-	-	-	2	
		TOTAL NF AND OTHER	1	-	1	-	-	-	-	-	-	2	
MT HOOD	ORE.	NATIONAL FOREST	1	1	8	1	14	-	-	-	12	37	
		TOTAL NF AND OTHER	1	1	8	1	14	-	-	-	12	37	
OCHOCO	ORE.	NATIONAL FOREST	58	1	2	-	2	-	-	-	1	64	
		TOTAL NF AND OTHER	58	1	2	-	2	-	-	-	1	64	
OKANOGAN	WASH.	NATIONAL FOREST	60	-	-	-	-	-	-	-	-	60	
		TOTAL NF AND OTHER	79	-	-	-	-	-	-	-	-	79	
OLYMPIC	WASH.	NATIONAL FOREST	-	1	-	-	1015	-	-	-	-	1016	
		TOTAL NF AND OTHER	-	1	-	-	1015	-	-	-	-	1016	
ROGUE RIVER	CALIF.	NATIONAL FOREST	-	-	-	-	-	-	-	-	-	-	
		TOTAL NF AND OTHER	-	-	-	-	-	-	-	-	-	-	
	ORE.	NATIONAL FOREST	12	-	-	-	11	-	-	-	-	23	
		TOTAL NF AND OTHER	12	-	-	-	11	-	-	-	-	23	
SISKIYOU	CALIF.	NATIONAL FOREST	-	-	-	2	-	-	-	-	-	2	
		TOTAL NF AND OTHER	-	-	-	2	-	-	-	-	-	2	
	ORE.	NATIONAL FOREST	2	-	2	3	23	-	-	-	-	30	
		TOTAL NF AND OTHER	3	-	2	3	23	-	-	-	-	31	
SIUSLAW	ORE.	NATIONAL FOREST	1	1	-	-	6	-	-	-	-	8	
		TOTAL NF AND OTHER	1	1	-	-	6	-	-	-	-	8	
UMATILLA	ORE.	NATIONAL FOREST	182	1	-	-	-	-	-	-	-	183	
		TOTAL NF AND OTHER	182	1	-	-	-	-	-	-	-	183	
	WASH.	NATIONAL FOREST	10	-	-	-	8	-	-	-	78	96	
		TOTAL NF AND OTHER	10	-	-	-	8	-	-	-	88	106	
UMPQUA	ORE.	NATIONAL FOREST	-	50	-	-	-	-	3	-	-	53	
		TOTAL NF AND OTHER	-	50	-	-	-	-	3	-	-	53	
WALLOWA WHITMAN	IDAH	NATIONAL FOREST	7	-	-	-	-	-	-	-	-	7	
		TOTAL NF AND OTHER	7	-	-	-	-	-	-	-	-	7	
	ORE.	NATIONAL FOREST	76	5	-	3	3	-	-	-	-	87	
		TOTAL NF AND OTHER	76	5	-	3	3	-	-	-	-	87	
WENATCHEE	WASH.	NATIONAL FOREST	15	1	-	1	17	-	-	1	5	40	
		TOTAL NF AND OTHER	15	1	-	1	17	-	-	1	25	60	
WILLAMETE	ORE.	NATIONAL FOREST	1	-	-	-	11	-	-	-	-	12	
		TOTAL NF AND OTHER	1	-	-	-	11	-	-	-	-	12	
WINEMA	ORE.	NATIONAL FOREST	5	-	-	-	12	-	-	-	2	19	
		TOTAL NF AND OTHER	6	-	-	-	12	-	-	-	2	20	
COLVILLE	WASH.	NATIONAL FOREST	65	-	7	-	5	-	-	-	-	77	
		TOTAL NF AND OTHER	65	-	7	-	5	-	-	-	-	77	
REGION 06 TOTAL		NATIONAL FOREST	542	64	25	14	2021	-	3	1	923	3593	
		TOTAL NF AND OTHER	564	64	25	14	2021	-	3	1	1145	3637	

TABLE 2

NUMBER OF ACRES BURNED BY STATISTICAL CAUSES
(INSIDE PROTECTION BOUNDARIES)

ANNUAL FIRE REPORT 1984

FOREST	STATE		* * * * * PERSON CAUSED * * * * *									TOTAL ALL
			LIGHT- NING	EQUIP MENT	SMOK- ING	CAMP FIRE	DEBRIS BURNING	RAIL ROAD	INCEN- DIARY	CHILC REN	MISC	
ALABAMA	ALA.	NATIONAL FOREST	53	-	3	10	75	4	618	1	43	787
		TOTAL NF AND OTHER	53	1	3	15	106	62	1409	1	48	1660
DANIEL BOONE	KY.	NATIONAL FOREST	15	-	5	53	16	-	245	10	20	366
		TOTAL NF AND OTHER	15	-	5	53	80	-	363	10	30	576
CHATTAHOOCHEE-OCONEE	GA.	NATIONAL FOREST	-	-	1	15	29	-	411	-	52	508
		TOTAL NF AND OTHER	-	-	1	15	47	12	579	1	64	719
CHEROKEE	TENN.	NATIONAL FOREST	236	2	-	-	1	3	716	-	91	1049
		TOTAL NF AND OTHER	236	2	-	-	4	3	752	-	91	1088
FLORIDA	FLA.	NATIONAL FOREST	302	2674	2	17	50	-	199	13	290	3547
		TOTAL NF AND OTHER	302	2674	2	17	54	-	200	14	310	3573
KISATCHIE	LA.	NATIONAL FOREST	-	-	75	-	54	-	782	-	36	947
		TOTAL NF AND OTHER	-	-	75	-	90	-	3036	-	45	3246
MISSISSIPPI	MISS.	NATIONAL FOREST	21	68	5	23	91	-	1992	20	413	2633
		TOTAL NF AND OTHER	41	159	83	23	129	-	2533	20	505	3493
GEORGE WASHINGTON	VA.	NATIONAL FOREST	543	8	8	-	1	-	22	-	51	1033
		TOTAL NF AND OTHER	1029	8	18	-	1	-	24	-	82	1162
	W.VA.	NATIONAL FOREST	3	-	45	-	-	-	-	-	-	48
		TOTAL NF AND OTHER	3	-	45	-	-	-	-	-	-	48
OUACHITA	ARK.	NATIONAL FOREST	157	380	4	7	53	-	81	-	56	738
		TOTAL NF AND OTHER	160	462	5	7	77	-	90	-	70	871
	OKLA.	NATIONAL FOREST	4	-	-	-	4	-	105	-	5	118
		TOTAL NF AND OTHER	4	-	-	-	369	-	210	-	10	613
OLARK SAINT FRANCIS	ARK.	NATIONAL FOREST	38	-	-	-	5	-	133	-	4	180
		TOTAL NF AND OTHER	42	-	75	-	45	-	390	-	4	556
NORTH CAROLINA	N.C.	NATIONAL FOREST	-	-	3	62	49	416	337	3	70	940
		TOTAL NF AND OTHER	9	4	5	63	172	581	542	3	160	1539
FRAN. MARION&SUMTER	S.C.	NATIONAL FOREST	-	-	13	-	47	-	562	9	135	766
		TOTAL NF AND OTHER	-	3	13	-	88	10	625	12	135	886
TEXAS	TEX.	NATIONAL FOREST	24	25	188	58	36	40	319	1	129	820
		TOTAL NF AND OTHER	24	25	190	60	45	42	352	1	144	883
JEFFERSON	VA.	NATIONAL FOREST	9	-	52	4	-	42	283	-	1	391
		TOTAL NF AND OTHER	9	-	52	16	2	44	286	-	1	410
REGION 06 TOTAL		NATIONAL FOREST	1765	3157	404	249	513	505	6805	57	1396	14871
		TOTAL NF AND OTHER	1907	3338	572	269	1311	754	11411	62	1719	21343

TABLE 2

NUMBER OF ACRES BURNED BY STATISTICAL CAUSES
(INSIDE PROTECTION BOUNDARIES)

ANNUAL FIRE REPORT 1984

FOREST	STATE		* * * * * PERSON CAUSED * * * * *										TOTAL ALL
			LIGHT- NING	EQUIP	SMOK- ING	CAMP FIRE	DEBRIS BURNING	RAIL ROAD	INCEN- DIARY	CHILD REN	MISC		
CHEQUAMEGON	WIS.	NATIONAL FOREST	-	-	-	-	-	-	12	-	-	12	
		TOTAL NF AND OTHER	-	-	-	-	-	-	12	1	-	13	
CHIPPEWA	MINN.	NATIONAL FOREST	-	3	27	-	4	-	178	12	-	224	
		TOTAL NF AND OTHER	-	9	35	-	21	-	923	31	2	1021	
HURON MANISTEE	MICH.	NATIONAL FOREST	-	1642	60	702	10	-	36	15	-	2465	
		TOTAL NF AND OTHER	-	1607	163	906	49	-	37	35	-	3017	
MARK TWAIN	MO.	NATIONAL FOREST	-	51	8	27	169	-	1753	1	-	2009	
		TOTAL NF AND OTHER	-	82	9	55	268	-	2061	10	-	2465	
NICOLET	WIS.	NATIONAL FOREST	-	-	-	-	-	-	1	-	-	1	
		TOTAL NF AND OTHER	-	2	-	1	-	-	7	1	-	11	
OTTAWA	MICH.	NATIONAL FOREST	-	-	-	-	11	-	-	-	-	11	
		TOTAL NF AND OTHER	-	-	-	-	13	-	-	-	2	15	
SHAWNEE	ILL.	NATIONAL FOREST	-	9	-	5	-	-	5	-	-	19	
		TOTAL NF AND OTHER	-	9	-	7	49	-	45	-	-	110	
SUPERIOR	MINN.	NATIONAL FOREST	1	2	3	-	-	21	-	-	-	27	
		TOTAL NF AND OTHER	1	430	3	1	2	29	-	1	-	467	
MIAWATHA	MICH.	NATIONAL FOREST	1	23	566	1	10	-	-	-	-	601	
		TOTAL NF AND OTHER	1	25	569	1	16	2	-	5	-	619	
WAYNE-HOOVER	IND.	NATIONAL FOREST	-	-	-	39	-	-	2	-	-	41	
		TOTAL NF AND OTHER	-	-	-	39	26	-	16	-	-	81	
	OHIO	NATIONAL FOREST	-	-	-	-	1	-	38	-	-	39	
		TOTAL NF AND OTHER	-	5	5	-	51	-	153	-	5	219	
ALLEGHENY	PA.	NATIONAL FOREST	4	30	-	-	-	-	-	-	-	34	
		TOTAL NF AND OTHER	4	236	-	-	-	-	-	-	-	242	
MUNONGAHELA	W.VA.	NATIONAL FOREST	2	-	-	-	11	-	67	-	-	80	
		TOTAL NF AND OTHER	2	-	-	-	46	-	70	-	-	118	
WHITE MOUNTAIN	MAINE	NATIONAL FOREST	1	-	-	-	-	-	-	-	-	1	
		TOTAL NF AND OTHER	1	-	-	-	-	-	-	-	-	1	
	N.H.	NATIONAL FOREST	-	-	1	105	3	1	-	-	-	110	
		TOTAL NF AND OTHER	-	-	1	105	3	1	-	-	-	110	
REGION 09 TOTAL		NATIONAL FOREST	9	1760	665	879	219	22	2092	28	-	5674	
		TOTAL NF AND OTHER	9	2607	665	1115	544	32	3324	84	9	6529	

FOREST	STATE		* * * * * PERSON CAUSED * * * * *										TOTAL ALL
			LIGHT-NING	EQUIP	SMCK-ING	CAMP FIRE	DEBRIS BURNING	RAIL RCAO	INCEN-DIARY	CHILD REN	MISC		
STIKINE TONGASS	ALASKA	NATIONAL FOREST	-	-	-	-	-	-	-	-	-	-	-
		TOTAL NF AND OTHER	-	-	-	-	-	-	-	-	-	-	-
CHATHAM TONGASS	ALASKA	NATIONAL FOREST	-	-	-	-	-	-	-	-	-	-	-
		TOTAL NF AND OTHER	-	-	-	-	-	-	-	-	-	-	-
CHUGACH	ALASKA	NATIONAL FOREST	-	-	-	-	-	-	6	1	4	11	
		TOTAL NF AND OTHER	-	-	-	-	-	-	6	1	4	11	
REGION 10 TOTAL		NATIONAL FOREST	-	-	-	-	-	-	6	1	4	11	
		TOTAL NF AND OTHER	-	-	-	-	-	-	6	1	4	11	
ALL REGIONS TOTAL		NATIONAL FOREST	19111	27197	6838	3482	17500	737	12261	462	9328	96916	
		TOTAL NF AND OTHER	25085	42809	12822	4033	21357	1611	19466	608	13348	141139	



Cochiti Fire, started May 27, 1984 Santa Fe National Forest, Region 3.

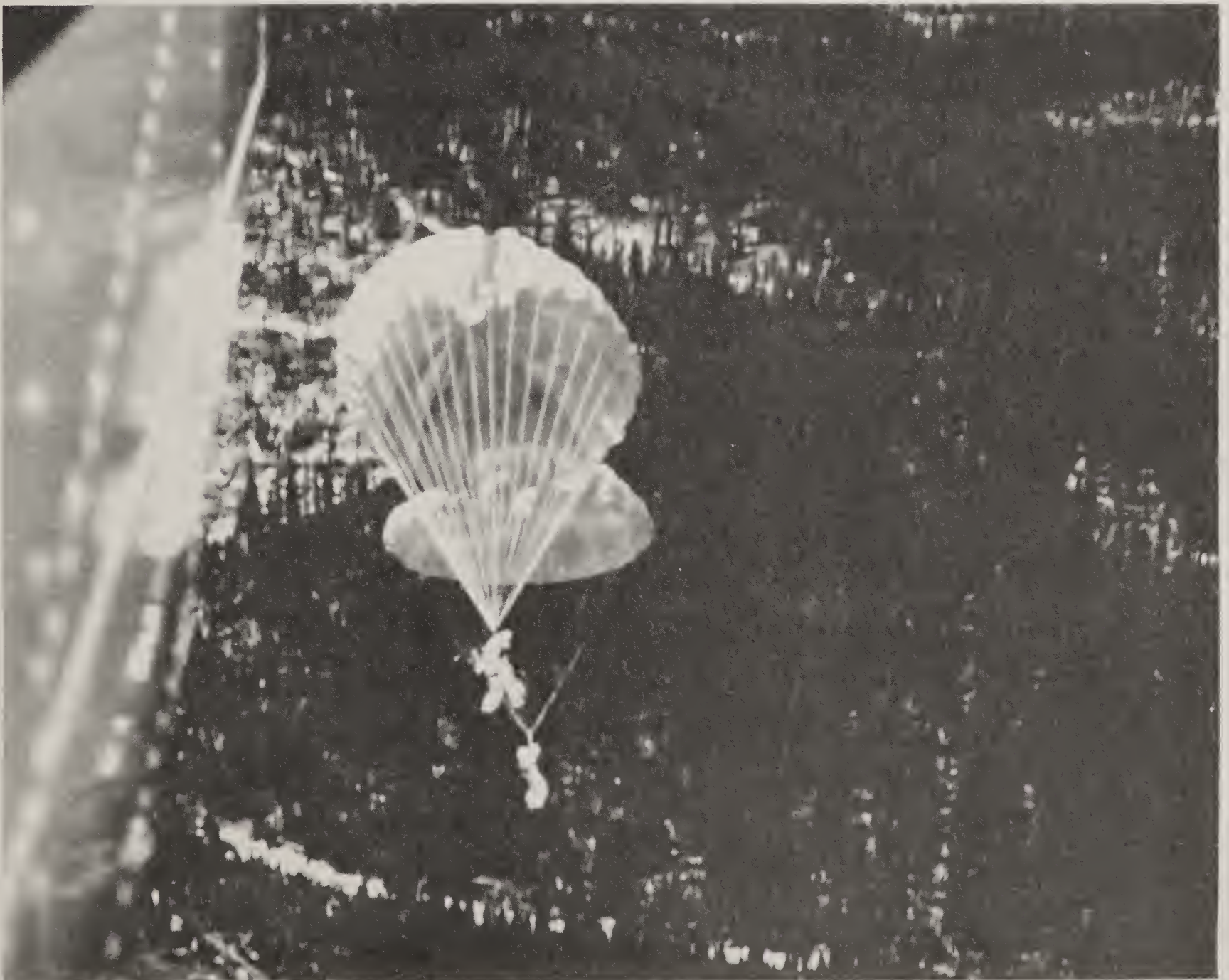
-OUT-

TABLE 3A AREA BURNED AND DAMAGED (VALUE IN HUNDREDS OF DOLLARS) ANNUAL FIRE REPORT 1984
(NF AND INSIDE PROTECTION BOUNDRIES)

FOREST	STATE	- ACRES BURNED -			TIMBER RESOURCES		NONTIMBER RESOURCES		GRAND TOTAL VALUE	
		NDN FOREST	NDN CCML.	CCML.	VOLUME MBM	TOTAL VALUE	WATERSHED VALLE	TOTAL VALUE		
		*** * * * * * * * * * DAMAGE * * * * * * * * * *								
BEAVERHEAD	MDNT.	NATIONAL FOREST	-	-	1	-	-	-	-	-
		OTHER LAND	-	-	-	-	-	-	-	-
		TOTAL NF AND OTHER	-	-	1	-	-	-	-	-
BITTERROOT	IDAHO	NATIONAL FOREST	-	72	-	-	-	-	-	-
		OTHER LAND	-	-	-	-	-	-	-	-
		TOTAL NF AND OTHER	-	72	-	-	-	-	-	-
	MONT.	NATIONAL FOREST	-	3	63	-	-	-	-	-
		OTHER LAND	-	1	1	-	-	-	-	-
		TOTAL NF AND OTHER	-	4	64	-	-	-	-	-
PAN HANDLE	IDAHO	NATIONAL FOREST	1	7	26	-	-	-	-	-
		OTHER LAND	-	-	13	-	-	-	-	-
		TOTAL NF AND OTHER	1	7	39	-	-	-	-	-
	WASH.	NATIONAL FOREST	-	-	2	-	-	-	-	-
		OTHER LAND	-	-	-	-	-	-	-	-
		TOTAL NF AND OTHER	-	-	2	-	-	-	-	-
CLEARWATER	IDAHO	NATIONAL FOREST	-	7	83	100	85	-	15	100
		OTHER LAND	-	-	2	-	-	-	-	-
		TOTAL NF AND OTHER	-	7	85	100	85	-	15	100
CUSTER	MDNT.	NATIONAL FOREST	3	974	33	45	32012	50	50050	82062
		OTHER LAND	535	1900	-	-	40000	-	30065	70065
		TOTAL NF AND OTHER	538	2874	33	45	72012	50	80115	152127
	N.D.	NATIONAL FOREST	606	5	-	-	-	8	8	8
		OTHER LAND	4	-	-	30	-	-	-	-
		TOTAL NF AND OTHER	612	5	-	30	-	8	8	8
DEERLODGE	MONT.	NATIONAL FOREST	1	1	1	-	-	-	-	-
		OTHER LAND	-	-	-	-	-	-	-	-
		TOTAL NF AND OTHER	1	1	1	-	-	-	-	-
FLATHEAD	MDNT.	NATIONAL FOREST	5	1058	313	2602	1421	3205	11052	12473
		OTHER LAND	2782	-	121	2	620	12	12	632
		TOTAL NF AND OTHER	2787	1058	434	2604	2041	3217	11064	13105
GALLATIN	MONT.	NATIONAL FOREST	-	1	-	-	-	-	-	-
		OTHER LAND	-	-	-	-	-	-	-	-
		TOTAL NF AND OTHER	-	1	-	-	-	-	-	-
HELENA	MDNT.	NATIONAL FOREST	-	17344	-	-	-	3230	4232	4232
		OTHER LAND	-	10382	2	-	-	10	15	15
		TOTAL NF AND OTHER	-	27726	2	-	-	3240	4247	4247
KOOTENAI	IDAHO	NATIONAL FOREST	-	-	-	-	-	-	-	-
		OTHER LAND	-	-	-	-	-	-	-	-
		TOTAL NF AND OTHER	-	-	-	-	-	-	-	-

*** ** * * * * * ** DAMAGE * * * * * **

FOREST	STATE	- ACRES BURNED -			TIMBER	RESOURCES	NONTIMBER	RESOURCES	GRAND TOTAL	
		NON FOREST	NON COML.	COML.	VOLUME PBM	TOTAL VALUE	WATERSHED VALUE	TOTAL VALUE	VALUE	
	MONT.	NATIONAL FOREST	15	4	178	50	10301	-	262	10563
		OTHER LAND	54	-	56	105	20000	-	10001	30001
		TOTAL NF AND OTHER	69	4	234	155	30301	-	10263	40564
LEWIS + CLARK	MONT.	NATIONAL FOREST	1	214	417	1447	6249	-	6644	12893
		OTHER LAND	-	3	-	-	-	-	20000	20000
		TOTAL NF AND OTHER	1	217	417	1447	6249	-	26644	32893
LOLO	MONT.	NATIONAL FOREST	1	3	432	1094	-	-	-	-
		OTHER LAND	135	2	25	1	1	-	1	2
		TOTAL NF AND OTHER	136	5	457	1095	1	-	1	2
NEZPERCE	IDAH0	NATIONAL FOREST	-	88	21	4500	-	-	-	-
		OTHER LAND	-	-	1	-	-	-	-	-
		TOTAL NF AND OTHER	-	88	22	4500	-	-	-	-
REGION 01 TOTAL		NATIONAL FOREST	635	19781	1570	9838	50068	6493	72263	122331
		OTHER LAND	3516	12288	221	138	60621	22	60094	120715
		TOTAL NF AND OTHER	4145	32069	1791	9976	110689	6515	132357	243046



Two Region 1 Smokejumpers on initial attack, August 1984.

FOREST	STATE	- ACRES BURNED -			DAMAGE		GRAND TOTAL VALUE			
		NON FOREST	NON CCML.	CCML.	TIMBER RESOURCES	NONTIMBER RESOURCES				
		VOLUME M3M	TOTAL VALUE	WATERSHED VALLE	TOTAL VALUE					
BIGHORN	WYO.	NATIONAL FOREST	1	225	1	444	-	-	-	-
		OTHER LAND	-	2	-	-	-	-	-	-
		TOTAL NF AND OTHER	1	227	1	444	-	-	-	-
BLACK HILLS	S.DAK.	NATIONAL FOREST	2	37	82	-	4	-	23	27
		OTHER LAND	123	532	8	-	10	-	10	20
		TOTAL NF AND OTHER	125	569	90	-	14	-	33	47
	WYO.	NATIONAL FOREST	-	-	5	-	-	-	-	-
		OTHER LAND	-	1	1	-	-	-	-	-
		TOTAL NF AND OTHER	-	1	6	-	-	-	-	-
GRD MESA-UNC & GLNN	COLO.	NATIONAL FOREST	-	1	7	-	-	-	-	-
		OTHER LAND	-	-	-	-	-	-	-	-
		TOTAL NF AND OTHER	-	1	7	-	-	-	-	-
MEDICINE BOW	WYO.	NATIONAL FOREST	-	7	10	-	-	-	-	-
		OTHER LAND	60	-	1	-	-	-	75	75
		TOTAL NF AND OTHER	60	7	11	-	-	-	75	75
NEBRASKA	NEBR.	NATIONAL FOREST	99	-	3	-	-	-	-	-
		OTHER LAND	202	-	-	-	-	-	-	-
		TOTAL NF AND OTHER	301	-	3	-	-	-	-	-
	S.DAK.	NATIONAL FOREST	473	68	-	-	-	-	-	-
		OTHER LAND	816	-	-	-	-	-	-	-
		TOTAL NF AND OTHER	1289	68	-	-	-	-	-	-
RIO GRANDE	COLO.	NATIONAL FOREST	8	31	36	-	-	-	-	-
		OTHER LAND	-	1	-	-	-	-	-	-
		TOTAL NF AND OTHER	8	32	36	-	-	-	-	-
ARAPAHO & ROOSEVELT	COLO.	NATIONAL FOREST	63	87	11	10	1	28	28	29
		OTHER LAND	37	-	-	-	-	-	-	-
		TOTAL NF AND OTHER	100	87	11	10	1	28	28	29
ROUTT	COLO.	NATIONAL FOREST	-	-	-	-	-	-	-	-
		OTHER LAND	-	-	-	-	-	-	-	-
		TOTAL NF AND OTHER	-	-	-	-	-	-	-	-
PIKE & SAN ISABEL	COLO.	NATIONAL FOREST	323	43	23	-	-	-	500	500
		OTHER LAND	10	5	1	-	-	-	-	-
		TOTAL NF AND OTHER	333	48	24	-	-	-	500	500
	KANSAS	NATIONAL FOREST	-	-	-	-	-	-	-	-
		OTHER LAND	-	-	-	-	-	-	-	-
		TOTAL NF AND OTHER	-	-	-	-	-	-	-	-
SAN JUAN	COLO.	NATIONAL FOREST	-	10	-	-	-	-	-	-
		OTHER LAND	-	-	-	-	-	-	-	-
		TOTAL NF AND OTHER	-	10	-	-	-	-	-	-
SHOSHONE	WYO.	NATIONAL FOREST	-	8	1	-	-	-	-	-
		OTHER LAND	-	-	-	-	-	-	-	-
		TOTAL NF AND OTHER	-	8	1	-	-	-	-	-
WHITE RIVER	COLO.	NATIONAL FOREST	-	1	-	-	-	-	-	-
		OTHER LAND	-	-	-	-	-	-	-	-
		TOTAL NF AND OTHER	-	1	-	-	-	-	-	-
REGION 02 TOTAL		NATIONAL FOREST	969	518	179	454	5	28	551	556
		OTHER LAND	1248	561	11	-	10	-	85	95
		TOTAL NF AND OTHER	2217	1079	190	454	15	28	636	651

TABLE 3A

AREA BURNED AND DAMAGED (VALUE IN HUNDREDS OF DOLLARS)
(NF AND INSIDE PROTECTION BOUNDRIES)

ANNUAL FIRE REPORT 1984

FOREST	STATE	- ACRES BURNED -			TIMBER RESOURCES		DAMAGE		GRAND TOTAL VALUE	
		NON FOREST	NON CUML.	CCML.	VOLUME MBM	TOTAL VALUE	WATERSHED VALUE	TOTAL VALUE		
APACHE	ARIZ.	NATIONAL FOREST	1	22	136	-	-	-	-	
		OTHER LAND	4	12	-	-	-	-	-	
		TOTAL NF AND OTHER	5	34	136	-	-	-	-	
CARSON	N.M.	NATIONAL FOREST	-	3	44	-	105	21	26	131
		OTHER LAND	-	2	-	10	-	-	-	-
		TOTAL NF AND OTHER	-	5	44	10	105	21	26	131
CIBOLA	N.M.	NATIONAL FOREST	1	30	17	-	-	-	-	-
		OTHER LAND	-	-	-	-	-	-	-	-
		TOTAL NF AND OTHER	1	30	17	-	-	-	-	-
	OKLA.	NATIONAL FOREST	1	-	-	-	-	-	-	-
		OTHER LAND	-	-	-	-	-	-	-	-
		TOTAL NF AND OTHER	1	-	-	-	-	-	-	-
TEXAS	NATIONAL FOREST	710	-	-	-	-	-	-	-	
	OTHER LAND	378	-	-	-	-	-	-	-	
	TOTAL NF AND OTHER	1088	-	-	-	-	-	-	-	
CUCONINO	ARIZ.	NATIONAL FOREST	1	54	104	4	3	-	-	3
		OTHER LAND	3	7	5	-	-	-	-	-
		TOTAL NF AND OTHER	4	61	109	4	3	-	-	3
CORONADO	ARIZ.	NATIONAL FOREST	879	968	8	-	-	-	10	10
		OTHER LAND	89	8	-	-	-	-	-	-
		TOTAL NF AND OTHER	968	976	8	-	-	-	10	10
GILA	N.M.	NATIONAL FOREST	-	1044	83	30	530	145	1073	1603
		OTHER LAND	-	-	-	-	-	-	-	-
		TOTAL NF AND OTHER	-	1044	83	30	530	145	1073	1603
KAIBAB	ARIZ.	NATIONAL FOREST	42	8	1149	4500	1577	2120	2617	4194
		OTHER LAND	1	-	94	50	18	-	7	25
		TOTAL NF AND OTHER	43	8	1243	4550	1595	2120	2624	4219
LINCOLN	N.M.	NATIONAL FOREST	20	-	13	-	-	-	2	2
		OTHER LAND	-	-	3	-	-	-	-	-
		TOTAL NF AND OTHER	20	-	16	-	-	-	2	2
PRESCOTT	ARIZ.	NATIONAL FOREST	131	15	29	-	-	127	727	727
		OTHER LAND	15	1	2	-	-	1	5	5
		TOTAL NF AND OTHER	146	16	31	-	-	128	732	732
SANTA FE	N.M.	NATIONAL FOREST	-	53	290	186	187	5	5	192
		OTHER LAND	-	-	-	-	-	-	-	-
		TOTAL NF AND OTHER	-	53	290	186	187	5	5	192
TONTON	ARIZ.	NATIONAL FOREST	2524	89	47	-	-	64	54574	54574
		OTHER LAND	101	-	3	-	-	-	1	1
		TOTAL NF AND OTHER	2625	89	50	-	-	64	54575	54575
REGION 03 TOTAL		NATIONAL FOREST	4310	2266	1920	4720	2402	2462	59034	61436
		OTHER LAND	591	30	107	60	16	1	13	31
		TOTAL NF AND OTHER	4901	2316	2027	4780	2420	2463	59047	61467

TABLE 3A

AREA BURNED AND DAMAGED (VALUE IN HUNDREDS OF DOLLARS)
(NF AND INSIDE PROTECTION BOUNDARIES)

ANNUAL FIRE REPORT 1984

FOREST	STATE		- ACRES BURNED -			TIMBER RESOURCES		NONTIMBER RESOURCES		GRAND TOTAL
			NON FOREST	NON CCML.	CCML.	VOLUME M&M	TOTAL VALUE	WATERSHED VALUE	TOTAL VALUE	VALUE
			*** * * * * O A M A G E * * * * * ***							
ASHLEY	UTAH	NATIONAL FOREST	-	1	-	-	-	-	-	-
		OTHER LAND	-	-	-	-	-	-	-	-
		TOTAL NF AND OTHER	-	1	-	-	-	-	-	-
WYO.		NATIONAL FOREST	-	-	-	-	-	-	-	-
		OTHER LAND	-	-	-	-	-	-	-	-
		TOTAL NF AND OTHER	-	-	-	-	-	-	-	-
BOISE	IDAHO	NATIONAL FOREST	11	49	26	12	1	-	-	1
		OTHER LAND	-	-	6	-	-	-	-	-
		TOTAL NF AND OTHER	11	49	34	12	1	-	-	1
BRIDGER	WYO.	NATIONAL FOREST	-	150	-	-	-	-	-	-
		OTHER LAND	-	-	-	-	-	-	-	-
		TOTAL NF AND OTHER	-	150	-	-	-	-	-	-
CARIBOU	IDAHO	NATIONAL FOREST	7	1	-	-	-	-	-	-
		OTHER LAND	-	-	-	-	-	-	-	-
		TOTAL NF AND OTHER	7	1	-	-	-	-	-	-
CHALLIS	IDAHO	NATIONAL FOREST	-	5	-	-	-	-	-	-
		OTHER LAND	-	-	-	-	-	-	-	-
		TOTAL NF AND OTHER	-	5	-	-	-	-	-	-
DIXIE	UTAH	NATIONAL FOREST	37	64	343	50829	213	50	183	396
		OTHER LAND	2	-	-	-	-	-	-	-
		TOTAL NF AND OTHER	39	64	343	50829	213	50	183	396
FISHLAKE	UTAH	NATIONAL FOREST	-	-	-	-	-	-	-	-
		OTHER LAND	-	-	-	-	-	-	-	-
		TOTAL NF AND OTHER	-	-	-	-	-	-	-	-
HUMBOLDT	NEVADA	NATIONAL FOREST	1174	40	-	100	80	162	662	762
		OTHER LAND	-	-	-	-	220	-	-	220
		TOTAL NF AND OTHER	1174	40	-	100	300	162	662	982
MANTI-LASAL	UTAH	NATIONAL FOREST	-	-	1	-	-	-	-	-
		OTHER LAND	-	-	-	-	-	-	-	-
		TOTAL NF AND OTHER	-	-	1	-	-	-	-	-
PAYETTE	IDAHO	NATIONAL FOREST	-	9	-	-	-	-	-	-
		OTHER LAND	-	-	-	-	-	-	-	-
		TOTAL NF AND OTHER	-	9	-	-	-	-	-	-
SALMON	IDAHO	NATIONAL FOREST	-	11	-	-	-	-	-	-
		OTHER LAND	-	-	-	-	-	-	-	-
		TOTAL NF AND OTHER	-	11	-	-	-	-	-	-
SAWTOOTH	IDAHO	NATIONAL FOREST	-	-	1	-	-	-	-	-
		OTHER LAND	-	-	-	-	-	-	-	-
		TOTAL NF AND OTHER	-	-	1	-	-	-	-	-

		- ACRES BURNED -			TIMBER RESOURCES		NONTIMBER RESOURCES		GRAND TOTAL	
FOREST	STATE	NON FDRcST	NON CCML.	CCML.	VOLUME MBM	TOTAL VALUE	WATERSHED VALLE	TOTAL VALUE	VALUE	
	UTAH	NATIONAL FOREST	7	-	-	-	-	-	-	
		OTHER LAND	-	-	-	-	-	-	-	
		TOTAL NF AND OTHER	7	-	-	-	-	-	-	
TARGHEE	IDAHO	NATIONAL FOREST	-	-	-	-	-	-	-	
		OTHER LAND	-	-	-	-	-	-	-	
		TOTAL NF AND OTHER	-	-	-	-	-	-	-	
	WYO.	NATIONAL FOREST	-	-	-	-	-	-	-	
		OTHER LAND	-	-	-	-	-	-	-	
		TOTAL NF AND OTHER	-	-	-	-	-	-	-	
TOIYABE	CALIF	NATIONAL FOREST	1096	429	5116	37650	3467	210	464	3931
		OTHER LAND	3804	393	2659	1035	1260	10	1260	2520
		TOTAL NF AND OTHER	4900	822	7775	38685	4727	220	1724	6451
	NEVADA	NATIONAL FOREST	66	215	11	5	5	8	17	22
		OTHER LAND	55	36	-	-	-	7	12	12
		TOTAL NF AND OTHER	121	251	11	5	5	15	29	34
UINTA	UTAH	NATIONAL FOREST	-	-	-	-	-	-	-	-
		OTHER LAND	3	-	-	-	-	-	-	-
		TOTAL NF AND OTHER	3	-	-	-	-	-	-	-
WASATCH	UTAH	NATIONAL FOREST	2	-	-	-	-	-	-	-
		OTHER LAND	20	-	-	-	-	-	-	-
		TOTAL NF AND OTHER	22	-	-	-	-	-	-	-
REGION 04 TOTAL		NATIONAL FOREST	2400	974	5496	88596	3766	430	1346	5112
		OTHER LAND	3884	429	2667	1035	1460	17	1272	2752
		TOTAL NF AND OTHER	6284	1403	8165	89631	5246	447	2618	7864



Firefighters in Montana, August 1984.

			*** * * * * ** DAMAGE * * * * * **							
			- ACRES BURNED -			TIMBER	RESOURCES	NONTIMBER	RESOURCES	GRAND TOTAL
FOREST	STATE		NON FOREST	NON COMML.	COMML.	VOLUME MBM	TOTAL VALUE	WATERSHED VALUE	TOTAL VALUE	VALUE
ANGELES	CALIF.	NATIONAL FOREST	346	441	-	-	-	2952	2954	2984
		OTHER LAND	132	184	-	-	-	8460	8460	8460
		TOTAL NF AND OTHER	478	625	-	-	-	11412	11444	11444
CLEVELAND	CALIF.	NATIONAL FOREST	4556	85	-	-	-	29519	30519	30519
		OTHER LAND	117	86	-	-	-	-	-	-
		TOTAL NF AND OTHER	4673	171	-	-	-	29519	30519	30519
ELDORADO	CALIF.	NATIONAL FOREST	-	32	33	-	-	12	12	12
		OTHER LAND	-	2	-	-	-	-	-	-
		TOTAL NF AND OTHER	-	34	33	-	-	12	12	12
INYO	CALIF.	NATIONAL FOREST	613	10	6	2	-	-	613	613
		OTHER LAND	53	-	1	-	-	-	53	53
		TOTAL NF AND OTHER	666	10	7	2	-	-	666	666
KLAMATH	CALIF.	NATIONAL FOREST	2	55	20	-	-	-	-	-
		OTHER LAND	1	74	1	-	-	-	-	-
		TOTAL NF AND OTHER	3	129	21	-	-	-	-	-
LASSEN	CALIF.	NATIONAL FOREST	203	111	403	23001	1464	100	356	1820
		OTHER LAND	-	1	61	250	1000	-	-	1000
		TOTAL NF AND OTHER	203	112	464	23251	2464	100	356	2820
LOS PADRES	CALIF.	NATIONAL FOREST	84	1936	80	71	-	5500	5500	5500
		OTHER LAND	1924	633	-	-	-	-	-	-
		TOTAL NF AND OTHER	2008	2569	80	71	-	5500	5500	5500
MENDOCINO	CALIF.	NATIONAL FOREST	-	19	30	5006	-	-	-	-
		OTHER LAND	-	113	32	5000	-	-	-	-
		TOTAL NF AND OTHER	-	132	62	10006	-	-	-	-
MODOC	CALIF.	NATIONAL FOREST	285	692	636	2700	5715	18	133	5848
		OTHER LAND	311	200	2411	5700	16150	12	67	18217
		TOTAL NF AND OTHER	596	892	3247	8400	23865	30	200	24065
SIX RIVERS	CALIF.	NATIONAL FOREST	-	4	6	-	-	-	-	-
		OTHER LAND	-	-	-	-	-	-	-	-
		TOTAL NF AND OTHER	-	4	6	-	-	-	-	-
PLUMAS	CALIF.	NATIONAL FOREST	-	53	468	28342	3976	420	420	4396
		OTHER LAND	1155	35	20	-	-	-	50	50
		TOTAL NF AND OTHER	1155	88	488	28342	3976	420	470	4446
SAN BERNARDINO	CALIF.	NATIONAL FOREST	162	2162	495	34477	139	536	643	782
		OTHER LAND	113	73	75	-	-	-	-	-
		TOTAL NF AND OTHER	275	2235	571	34477	139	536	643	782
SEQUOIA	CALIF.	NATIONAL FOREST	13572	905	1245	5	4123	15	1615	5943
		OTHER LAND	515	-	-	-	-	-	-	-
		TOTAL NF AND OTHER	14087	905	1245	5	4123	15	1615	5943

FOREST	STATE		- ACRES BURNED -			TIMBER RESOURCES		DAMAGE		GRAND TOTAL VALUE
			NON FOREST	NON COML.	COML.	VOLUME MBM	TOTAL VALUE	WATERSHED VALUE	TOTAL VALUE	
SHASTA	CALIF.	NATIONAL FOREST	-	382	542	20	105	-	-	105
		OTHER LAND	3	34	61	-	-	-	-	-
		TOTAL NF AND OTHER	3	416	603	20	105	-	-	105
SIERRA	CALIF.	NATIONAL FOREST	15	523	96	45	25	51	276	301
		OTHER LAND	3	4	-	-	-	-	-	-
		TOTAL NF AND OTHER	18	527	96	45	25	51	276	301
STANISLAUS	CALIF.	NATIONAL FOREST	-	41	59	90	31	1	11	42
		OTHER LAND	-	45	7	-	-	4	4	4
		TOTAL NF AND OTHER	-	86	66	90	31	5	15	46
TAHOE	CALIF.	NATIONAL FOREST	-	1	36	45	13	-	-	13
		OTHER LAND	525	23	17	-	-	-	-	-
		TOTAL NF AND OTHER	525	24	53	45	13	-	-	13
TAHOE BASIN MGMT	CALIF.	NATIONAL FOREST	-	3	-	-	-	-	-	-
		OTHER LAND	3	19	-	-	-	-	-	-
		TOTAL NF AND OTHER	3	22	-	-	-	-	-	-
	NEV	NATIONAL FOREST	-	69	-	187	19	28	28	47
		OTHER LAND	-	38	-	100	10	15	15	25
		TOTAL NF AND OTHER	-	107	-	287	29	43	43	72
REGION 05 TOTAL		NATIONAL FOREST	19840	7524	4363	93991	15615	39152	43310	56925
		OTHER LAND	4855	1564	2686	11050	19160	6491	6649	27809
		TOTAL NF AND OTHER	24695	9088	7049	105041	34775	47643	51959	86734



Fuel type near the point of origin on the Rail Fire, Modoc National Forest, Region 5.

TABLE 3A

AREA BURNED AND DAMAGED (VALUE IN HUNDREDS OF DOLLARS)
(NF AND INSIDE PROTECTION BOUNDRIES)

ANNUAL FIRE REPORT 1954

FOREST	STATE		- ACRES BURNED -			TIMBER RESOURCES		NONTIMBER RESOURCES		GRAND TOTAL VALUE
			NON FOREST	NON CCML.	CCML.	VOLUME MBM	TOTAL VALUE	WATERSHED VALUE	TOTAL VALUE	
			*** * * * * DAMAGE * * * * * ***							
DESCHUTES	ORE.	NATIONAL FOREST	1	26	1589	22	5975	12	12	5987
		OTHER LAND	-	-	192	-	-	-	-	-
		TOTAL NF AND OTHER	1	26	1581	22	5975	12	12	5987
FREMONT	ORE.	NATIONAL FOREST	-	2	66	-	-	-	-	-
		OTHER LAND	-	-	1	-	-	-	-	-
		TOTAL NF AND OTHER	-	2	69	-	-	-	-	-
GIFFORD PINCHOT	WASH.	NATIONAL FOREST	1	-	272	470	1433	-	-	1433
		OTHER LAND	-	-	-	-	-	-	-	-
		TOTAL NF AND OTHER	1	-	272	470	1433	-	-	1433
MALHEUR	ORE.	NATIONAL FOREST	-	1	17	-	-	-	-	-
		OTHER LAND	-	-	-	-	-	-	-	-
		TOTAL NF AND OTHER	-	1	17	-	-	-	-	-
MT BAKER	WASH.	NATIONAL FOREST	-	-	2	-	-	-	-	-
		OTHER LAND	-	-	-	-	-	-	-	-
		TOTAL NF AND OTHER	-	-	2	-	-	-	-	-
MT HOOD	ORE.	NATIONAL FOREST	-	1	36	64	1235	-	-	1235
		OTHER LAND	-	-	-	-	-	-	-	-
		TOTAL NF AND OTHER	-	1	36	64	1235	-	-	1235
OCHOCD	ORE.	NATIONAL FOREST	5	50	9	-	-	-	-	-
		OTHER LAND	-	-	-	-	-	-	-	-
		TOTAL NF AND OTHER	5	50	9	-	-	-	-	-
OKANOGAN	WASH.	NATIONAL FOREST	-	56	4	-	4	-	-	4
		TOTAL NF AND OTHER	-	56	25	4	8	-	-	8
OLYMPIC	WASH.	NATIONAL FOREST	-	-	1016	80	10810	66	18357	29167
		OTHER LAND	-	-	-	-	-	-	-	-
		TOTAL NF AND OTHER	-	-	1016	80	10810	66	18357	29167
ROGUE RIVER	CALIF.	NATIONAL FOREST	-	-	-	-	-	-	-	-
		OTHER LAND	-	-	-	-	-	-	-	-
		TOTAL NF AND OTHER	-	-	-	-	-	-	-	-
	ORE.	NATIONAL FOREST	-	10	13	2	13	-	-	13
		OTHER LAND	-	-	-	-	-	-	-	-
TOTAL NF AND OTHER	-	10	13	2	13	-	-	13		
SISKIYOU	CALIF.	NATIONAL FOREST	-	-	2	-	-	-	-	-
		OTHER LAND	-	-	-	-	-	-	-	-
		TOTAL NF AND OTHER	-	-	2	-	-	-	-	-
	ORE.	NATIONAL FOREST	1	3	26	2	-	-	-	-
OTHER LAND		-	1	-	-	-	-	-	-	
TOTAL NF AND OTHER	1	4	26	2	-	-	-	-		

TABLE 3A

AREA BURNED AND DAMAGED (VALUE IN HUNDREDS OF DOLLARS)
(NF AND INSIDE PROTECTION BOUNDRIES)

ANNUAL FIRE REPORT 1984

FOREST	STATE	- ACRES BURNED -			TIMBER RESOURCES		DAMAGE		GRAND TOTAL VALUE
		NON FOREST	NON CUML.	COML.	VOLUME MBM	TOTAL VALUE	WATERSHED VALUE	TOTAL VALUE	
SIUSLAW	ORE.	NATIONAL FOREST	-	1	7	-	-	-	-
		OTHER LAND	-	-	-	-	-	-	-
		TOTAL NF AND OTHER	-	1	7	-	-	-	-
UMATILLA	ORE.	NATIONAL FOREST	20	82	81	480	384	-	384
		OTHER LAND	-	-	-	-	-	-	-
		TOTAL NF AND OTHER	20	82	81	480	384	-	384
	WASH.	NATIONAL FOREST	-	6	90	-	-	-	-
		OTHER LAND	-	-	10	-	-	-	-
		TOTAL NF AND OTHER	-	6	100	-	-	-	-
UMPQUA	ORE.	NATIONAL FOREST	-	-	53	2982	2608	-	2608
		OTHER LAND	-	-	-	-	-	-	-
		TOTAL NF AND OTHER	-	-	53	2982	2608	-	2608
WALLOWA WHITMAN	IDAHO	NATIONAL FOREST	-	7	-	-	-	-	-
		OTHER LAND	-	-	-	-	-	-	-
		TOTAL NF AND OTHER	-	7	-	-	-	-	-
	ORE.	NATIONAL FOREST	18	34	35	-	-	-	-
		OTHER LAND	-	-	-	-	-	-	-
		TOTAL NF AND OTHER	18	34	35	-	-	-	-
WENATCHEE	WASH.	NATIONAL FOREST	-	19	21	-	530	-	530
		OTHER LAND	-	20	-	-	-	-	-
		TOTAL NF AND OTHER	-	39	21	-	530	-	530
WILLAMETE	ORE.	NATIONAL FOREST	-	1	11	-	-	-	-
		OTHER LAND	-	-	-	-	-	-	-
		TOTAL NF AND OTHER	-	1	11	-	-	-	-
WINEMA	ORE.	NATIONAL FOREST	-	-	19	-	-	-	-
		OTHER LAND	-	-	1	-	-	-	-
		TOTAL NF AND OTHER	-	-	20	-	-	-	-
CULVILLE	WASH.	NATIONAL FOREST	-	25	52	125	-	-	-
		OTHER LAND	-	-	-	-	-	-	-
		TOTAL NF AND OTHER	-	25	52	125	-	-	-
REGION 06 TOTAL		NATIONAL FOREST	46	324	3223	4227	20992	78	18369
		OTHER LAND	-	21	223	4	4	-	-
		TOTAL NF AND OTHER	46	345	3446	4231	20996	78	18369

TABLE 3A

AREA BURNED AND DAMAGED (VALUE IN HUNDREDS OF DOLLARS)
(NF AND INSIDE PROTECTION BOUNDRIES)

ANNUAL FIRE REPORT 1984

FOREST	STATE		- ACRES BURNED -			TIMBER RESOURCES		DAMAGE		GRAND TOTAL VALUE
			NON FOREST	NON COML.	CCML.	VOLUME MBM	TOTAL VALUE	WATERSHED VALUE	TOTAL VALUE	
ALABAMA	ALA.	NATIONAL FOREST	-	-	787	8	106	17	17	123
		OTHER LAND	29	1	863	-	71	10	10	81
		TOTAL NF AND OTHER	29	1	1650	8	177	27	27	204
DANIEL BOONE	KY.	NATIONAL FOREST	1	10	355	80	28	12	12	40
		OTHER LAND	16	-	194	43	11	4	4	15
		TOTAL NF AND OTHER	17	10	549	123	39	16	16	55
CHATTAHOOCHEE-OCONEE	GA.	NATIONAL FOREST	1	1	506	-	21	47	47	68
		OTHER LAND	16	10	185	1	8	10	10	18
		TOTAL NF AND OTHER	17	11	691	1	29	57	57	86
CHEROKEE	TENN.	NATIONAL FOREST	-	349	700	1880	2075	1650	1890	3965
		OTHER LAND	2	19	18	2	25	20	20	45
		TOTAL NF AND OTHER	2	368	718	1882	2100	1670	1910	4010
FLORIDA	FLA.	NATIONAL FOREST	-	2534	393	1	2215	843	1686	3901
		OTHER LAND	-	1	25	-	5	-	-	5
		TOTAL NF AND OTHER	-	2535	418	1	2220	843	1686	3906
KISATCHIE	LA.	NATIONAL FOREST	11	2	934	-	10	-	-	10
		OTHER LAND	31	3	2265	-	-	-	-	-
		TOTAL NF AND OTHER	42	5	3199	-	10	-	-	10
MISSISSIPPI	MISS.	NATIONAL FOREST	120	1	2512	-	6220	197	244	6464
		OTHER LAND	133	41	686	-	496	192	244	740
		TOTAL NF AND OTHER	253	42	3198	-	6716	389	488	7204
GEORGE WASHINGTON	VA.	NATIONAL FOREST	-	907	126	-	2	-	-	2
		OTHER LAND	-	82	47	-	3	-	-	3
		TOTAL NF AND OTHER	-	989	173	-	5	-	-	5
	W.VA.	NATIONAL FOREST	-	31	17	-	-	5	5	5
		OTHER LAND	-	-	-	-	-	-	-	-
		TOTAL NF AND OTHER	-	31	17	-	-	5	5	5
OUACHITA	ARK.	NATIONAL FOREST	-	4	734	121	421	57	57	478
		OTHER LAND	9	12	112	-	-	-	-	-
		TOTAL NF AND OTHER	9	16	846	121	421	57	57	478
	OKLA.	NATIONAL FOREST	-	5	113	-	-	5	5	5
		OTHER LAND	11	42	442	-	-	-	-	-
		TOTAL NF AND OTHER	11	47	555	-	-	5	5	5
OZARK SAINT FRANCIS	ARK.	NATIONAL FOREST	-	-	180	-	40	1	1	41
		OTHER LAND	-	2	374	5	-	-	-	-
		TOTAL NF AND OTHER	-	2	554	5	40	1	1	41
NORTH CAROLINA	N.C.	NATIONAL FOREST	19	44	877	126	665	283	328	993
		OTHER LAND	31	130	438	19	265	38	63	328
		TOTAL NF AND OTHER	50	174	1315	147	930	321	391	1321

FOREST	STATE		- ACRES BURNED -			** * * * * OAMAGE * * * * *		GRAND TOTAL		
			NON FOREST	NON CCML.	CCML.	TIMBER RESOURCES	NONTIMBER RESOURCES			
						WATERSHED VALLE	TOTAL VALUE	VALUE		
FRAN. MARION&SUMTER	S.C.	NATIONAL FOREST	-	99	667	-	-	-		
		OTHER LAND	8	-	112	-	12	12	24	
		TOTAL NF AND OTHER	8	99	779	-	12	12	24	
TEXAS	TEX.	NATIONAL FOREST	343	5	472	176	497	-	497	
		OTHER LAND	8	15	40	-	-	-	-	
		TOTAL NF AND OTHER	351	20	512	176	497	-	497	
JEFFERSON	VA.	NATIONAL FOREST	-	-	391	360	11	2	4	15
		OTHER LAND	-	-	19	-	-	-	-	-
		TOTAL NF AND OTHER	-	-	410	360	11	2	4	15
REGION 06 TOTAL		NATIONAL FOREST	495	4012	10364	2754	12311	3119	4296	16607
		OTHER LAND	294	358	5820	70	896	286	363	1259
		TOTAL NF AND OTHER	789	4370	16184	2824	13207	3405	4659	17866



Crystal Creek Fire, Flathead National Forest, Region 1.

FOREST	STATE		- ACRES BURNED -			TIMBER RESOURCES		DAMAGE		GRAND TOTAL VALUE
			NON FOREST	NON COML.	COML.	VOLUME MBM	TOTAL VALUE	WATERSHED VALLE	TOTAL VALUE	
CHEQUAMEGON	WIS.	NATIONAL FOREST	10	-	2	-	-	-	-	-
		OTHER LAND	1	-	-	-	-	-	-	-
		TOTAL NF AND OTHER	11	-	2	-	-	-	-	-
CHIPPEWA	MINN.	NATIONAL FOREST	163	19	42	2	37	-	-	37
		OTHER LAND	623	88	26	-	3	-	-	3
		TOTAL NF AND OTHER	846	107	68	2	40	-	-	40
HURON MANISTEE	MICH.	NATIONAL FOREST	5	8	2452	10	656	-	-	656
		OTHER LAND	144	159	249	4	54	-	40	94
		TOTAL NF AND OTHER	149	167	2701	14	710	-	40	750
MARK TWAIN	MO.	NATIONAL FOREST	61	367	1581	15	141	-	-	141
		OTHER LAND	41	23	412	20	4	-	-	4
		TOTAL NF AND OTHER	102	390	1993	35	145	-	-	145
NICOLET	WIS.	NATIONAL FOREST	-	-	1	-	-	-	-	-
		OTHER LAND	1	1	8	-	-	-	-	-
		TOTAL NF AND OTHER	1	1	9	-	-	-	-	-
OTTAWA	MICH.	NATIONAL FOREST	-	-	11	-	5	-	-	5
		OTHER LAND	-	-	4	-	-	-	-	-
		TOTAL NF AND OTHER	-	-	15	-	5	-	-	5
SHAWNEE	ILL.	NATIONAL FOREST	-	-	19	-	-	-	-	-
		OTHER LAND	30	46	15	-	-	-	-	-
		TOTAL NF AND OTHER	30	46	34	-	-	-	-	-
SUPERIOR	MINN.	NATIONAL FOREST	-	1	26	16	-	-	-	-
		OTHER LAND	22	38	380	2390	24	-	4	28
		TOTAL NF AND OTHER	22	39	406	2406	24	-	4	28
HIAWATHA	MICH.	NATIONAL FOREST	558	10	33	29	104	-	-	104
		OTHER LAND	5	4	9	-	-	-	-	-
		TOTAL NF AND OTHER	563	14	42	29	104	-	-	104
WAYNE-HOOESIER	IND.	NATIONAL FOREST	-	39	2	-	-	-	-	-
		OTHER LAND	40	-	-	-	-	-	-	-
		TOTAL NF AND OTHER	40	39	2	-	-	-	-	-
	OHIO	NATIONAL FOREST	1	-	38	3	2	-	-	2
		OTHER LAND	24	1	155	4	2	-	-	2
TOTAL NF AND OTHER	25	1	193	7	4	-	-	4		
ALLEGHENY	PA.	NATIONAL FOREST	1	-	33	80	15	4	9	24
		OTHER LAND	8	-	200	575	47	3	16	63
		TOTAL NF AND OTHER	9	-	233	655	62	7	25	87
MONONGAHELA	W.VA.	NATIONAL FOREST	-	-	60	23	65	-	-	65
WHITE MOUNTAIN	MAINE	NATIONAL FOREST	-	1	-	-	-	-	-	-
		OTHER LAND	-	-	-	-	-	-	-	-
		TOTAL NF AND OTHER	-	1	-	-	-	-	-	-
	N.H.	NATIONAL FOREST	8	40	62	2	1	26	46	47
		OTHER LAND	-	-	-	-	-	-	-	-
TOTAL NF AND OTHER	8	40	62	2	1	26	46	47		
REGION 09 TOTAL		NATIONAL FOREST	807	485	4382	180	1026	30	55	1081
		OTHER LAND	1004	360	1491	2993	134	3	60	194
		TOTAL NF AND OTHER	1811	845	5873	3173	1160	33	115	1275

FOREST	STATE		*** ** * * * * * * * * * * DAMAGE * * * * * * * * * * ***							
			- ACRES BURNED -			TIMBER	RESOURCES	NONTIMBER	RESOURCES	GRAND TOTAL
			NON FOREST	NON COML.	COML.	VOLUME MBM	TOTAL VALUE	WATERSHED VALLE	TOTAL VALUE	VALUE
STIKINE TONGASS	ALASKA	NATIONAL FOREST	-	-	-	-	-	-	-	-
		OTHER LAND	-	-	-	-	-	-	-	-
		TOTAL NF AND OTHER	-	-	-	-	-	-	-	-
CHATHAM TONGASS	ALASKA	NATIONAL FOREST	-	-	-	-	-	-	-	-
		OTHER LAND	-	-	-	-	-	-	-	-
		TOTAL NF AND OTHER	-	-	-	-	-	-	-	-
CHUGACH	ALASKA	NATIONAL FOREST	1	6	4	-	-	-	-	-
		OTHER LAND	-	-	-	-	-	-	-	-
		TOTAL NF AND OTHER	1	6	4	-	-	-	-	-
REGION 10 TOTAL		NATIONAL FOREST	1	6	4	-	-	-	-	-
		OTHER LAND	-	-	-	-	-	-	-	-
		TOTAL NF AND OTHER	1	6	4	-	-	-	-	-
ALL REGIONS TOTAL		NATIONAL FOREST	29503	35910	31503	204760	106185	51812	199224	305409
		OTHER LAND	15586	15611	13226	15350	82323	8220	70536	152859
		TOTAL NF AND OTHER	44889	51521	44729	220110	188508	60032	269760	458268



Burning out the fireline on the Table Mountain Fire, White Mountain National Forest, Region 9.

-DWT-

TABLE 3b

AREA BURNED AND DAMAGED (VALUE IN HUNDREDS OF DOLLARS)
(NF AND INSIDE PROTECTION BOUNDRIES)

ANNUAL FIRE REPORT 1984

STATE		- ACRES BURNED -			DAMAGE		GRAND TOTAL VALUE		
		NON FOREST	NON COMML.	COMML.	TIMBER RESOURCES VOLUME MBM	TOTAL VALUE		NONTIMBER RESOURCES WATERSHED VALUE	TOTAL VALUE
ALABAMA	NATIONAL FOREST	-	-	787	8	106	17	17	123
	OTHER LAND	29	1	863	-	71	10	10	81
	TOTAL NF AND OTHER	29	1	1650	8	177	27	27	204
ALASKA	NATIONAL FOREST	1	6	4	-	-	-	-	-
	OTHER LAND	-	-	-	-	-	-	-	-
	TOTAL NF AND OTHER	1	6	4	-	-	-	-	-
ARIZONA	NATIONAL FOREST	3578	1156	1473	4504	1580	2311	57928	59508
	OTHER LAND	213	28	104	50	18	1	13	31
	TOTAL NF AND OTHER	3791	1184	1577	4554	1598	2312	57941	59539
ARKANSAS	NATIONAL FOREST	-	4	914	121	461	58	58	519
	OTHER LAND	9	14	486	5	-	-	-	-
	TOTAL NF AND OTHER	9	18	1400	126	461	58	58	519
CALIFORNIA	NATIONAL FOREST	20936	7864	9481	131454	19063	39334	43746	62809
	OTHER LAND	8659	1919	5345	11985	20410	8466	9894	30304
	TOTAL NF AND OTHER	29595	9803	14826	143439	39473	47800	53640	93113
COLORADO	NATIONAL FOREST	394	173	77	10	1	28	528	529
	OTHER LAND	47	6	1	-	-	-	-	-
	TOTAL NF AND OTHER	441	179	78	10	1	28	528	529
FLORIDA	NATIONAL FOREST	-	2554	993	1	2215	843	1686	3901
	OTHER LAND	-	1	25	-	5	-	-	5
	TOTAL NF AND OTHER	-	2555	1018	1	2220	843	1686	3906
GEORGIA	NATIONAL FOREST	1	1	506	-	21	47	47	68
	OTHER LAND	16	10	185	1	8	10	10	18
	TOTAL NF AND OTHER	17	11	691	1	29	57	57	86
IDAHO	NATIONAL FOREST	19	256	157	4612	86	-	15	101
	OTHER LAND	-	-	24	-	-	-	-	-
	TOTAL NF AND OTHER	19	256	181	4612	86	-	15	101
ILLINOIS	NATIONAL FOREST	-	-	19	-	-	-	-	-
	OTHER LAND	30	46	15	-	-	-	-	-
	TOTAL NF AND OTHER	30	46	34	-	-	-	-	-
INDIANA	NATIONAL FOREST	-	39	2	-	-	-	-	-
	OTHER LAND	40	-	-	-	-	-	-	-
	TOTAL NF AND OTHER	40	39	2	-	-	-	-	-
KENTUCKY	NATIONAL FOREST	1	10	353	80	26	12	12	40
	OTHER LAND	16	-	194	43	11	4	4	15
	TOTAL NF AND OTHER	17	10	547	123	37	16	16	55
LOUISIANA	NATIONAL FOREST	11	2	934	-	10	-	-	10
	OTHER LAND	31	3	2265	-	-	-	-	-
	TOTAL NF AND OTHER	42	5	3199	-	10	-	-	10

TABLE 3b

AREA BURNED AND DAMAGED (VALUE IN HUNDREDS OF DOLLARS)
(NF AND INSIDE PROTECTION BOUNDARIES)

ANNUAL FIRE REPORT 1984

STATE		** * * * * * * * * DAMAGE * * * * * * * * *							
		- ACRES BURNED -			TIMBER	RESOURCES	NONTIMBER RESOURCES		GRAND TOTAL
		NON FOREST	NON CCML.	CCML.	VOLUME MBM	TOTAL VALUE	WATERSHED VALUE	TOTAL VALUE	VALUE
MAINE	NATIONAL FOREST	-	1	-	-	-	-	-	-
	OTHER LAND	-	-	-	-	-	-	-	-
	TOTAL NF AND OTHER	-	1	-	-	-	-	-	-
MICHIGAN	NATIONAL FOREST	563	18	2496	39	765	-	-	765
	OTHER LAND	149	163	262	4	54	-	40	94
	TOTAL NF AND OTHER	712	181	2758	43	819	-	40	859
MINNESOTA	NATIONAL FOREST	163	20	66	16	37	-	-	37
	OTHER LAND	705	126	406	2390	27	-	4	31
	TOTAL NF AND OTHER	868	146	472	2406	64	-	4	68
MISSISSIPPI	NATIONAL FOREST	120	1	2512	-	6220	197	244	6464
	OTHER LAND	133	41	686	-	496	192	244	740
	TOTAL NF AND OTHER	253	42	3198	-	6716	389	488	7204
MISSOURI	NATIONAL FOREST	61	367	1581	15	141	-	-	141
	OTHER LAND	41	23	412	20	4	-	-	4
	TOTAL NF AND OTHER	102	390	1993	35	145	-	-	145
MONTANA	NATIONAL FOREST	26	19602	1438	5238	49983	6485	72240	122223
	OTHER LAND	3506	12288	205	106	60621	22	60094	120715
	TOTAL NF AND OTHER	3532	31890	1643	5344	110604	6507	132334	242938
NEBRASKA	NATIONAL FOREST	99	-	3	-	-	-	-	-
	OTHER LAND	202	-	-	-	-	-	-	-
	TOTAL NF AND OTHER	301	-	3	-	-	-	-	-
NEVADA	NATIONAL FOREST	1240	324	11	292	104	198	727	831
	OTHER LAND	55	74	-	100	230	22	27	257
	TOTAL NF AND OTHER	1295	398	11	392	334	220	754	1088
NEW HAMPSHIRE	NATIONAL FOREST	8	40	62	2	1	26	46	47
	OTHER LAND	-	-	-	-	-	-	-	-
	TOTAL NF AND OTHER	8	40	62	2	1	26	46	47
NEW MEXICO	NATIONAL FOREST	21	1130	447	216	822	171	1106	1928
	OTHER LAND	-	2	3	10	-	-	-	-
	TOTAL NF AND OTHER	21	1132	450	226	822	171	1106	1928
NORTH CAROLINA	NATIONAL FOREST	19	44	677	126	665	283	326	993
	OTHER LAND	31	130	438	19	265	38	63	328
	TOTAL NF AND OTHER	50	174	1115	145	930	321	391	1321
NORTH DAKOTA	NATIONAL FOREST	608	5	-	-	-	8	6	6
	OTHER LAND	4	-	-	30	-	-	-	-
	TOTAL NF AND OTHER	612	5	-	30	-	8	6	6
OHIO	NATIONAL FOREST	1	-	36	3	2	-	-	2
	OTHER LAND	24	1	155	4	2	-	-	2
	TOTAL NF AND OTHER	25	1	191	7	4	-	-	4

TABLE 3B

AREA BURNED AND DAMAGED (VALUE IN HUNDREDS OF DOLLARS)
(NF AND INSIDE PROTECTION BOUNDRIES)

ANNUAL FIRE REPORT 1984

STATE		- ACRES BURNED -			** * * * * * ** DAMAGE * * * * * **		TIMBER RESOURCES		NONTIMBER RESOURCES		GRAND TOTAL VALUE
		NON FOREST	NON CCML.	CCML.	VOLUME MBM	TOTAL VALUE	WATERSHED VALLE	TOTAL VALUE			
OKLAHOMA	NATIONAL FOREST	1	5	113	-	-	5	5	5		
	OTHER LAND	11	42	442	-	-	-	-	-		
	TOTAL NF AND OTHER	12	47	555	-	-	5	5	5		
OREGON	NATIONAL FOREST	45	211	1764	3552	8215	12	12	8227		
	OTHER LAND	-	1	194	-	-	-	-	-		
	TOTAL NF AND OTHER	45	212	1958	3552	8215	12	12	8227		
PENNSYLVANIA	NATIONAL FOREST	1	-	33	80	15	4	9	24		
	OTHER LAND	6	-	200	575	47	3	16	63		
	TOTAL NF AND OTHER	7	-	233	655	62	7	25	87		
SOUTH CAROLINA	NATIONAL FOREST	-	99	667	-	-	-	-	-		
	OTHER LAND	3	-	112	-	12	12	12	24		
	TOTAL NF AND OTHER	3	99	779	-	12	12	12	24		
SOUTH DAKOTA	NATIONAL FOREST	475	105	82	-	4	-	23	27		
	OTHER LAND	939	552	8	-	10	-	10	20		
	TOTAL NF AND OTHER	1414	657	90	-	14	-	33	47		
TENNESSEE	NATIONAL FOREST	-	349	700	1880	2075	1650	1890	3965		
	OTHER LAND	2	19	18	2	25	20	20	45		
	TOTAL NF AND OTHER	2	368	718	1882	2100	1670	1910	4010		
TEXAS	NATIONAL FOREST	1053	5	472	176	497	-	-	497		
	OTHER LAND	386	15	40	-	-	-	-	-		
	TOTAL NF AND OTHER	1439	20	512	176	497	-	-	497		
UTAH	NATIONAL FOREST	46	65	344	50829	213	50	183	396		
	OTHER LAND	25	-	-	-	-	-	-	-		
	TOTAL NF AND OTHER	71	65	344	50829	213	50	183	396		
VIRGINIA	NATIONAL FOREST	-	907	517	360	13	2	4	17		
	OTHER LAND	-	32	66	-	3	-	-	3		
	TOTAL NF AND OTHER	-	939	583	360	16	2	4	20		
WASHINGTON	NATIONAL FOREST	1	106	1459	675	12777	66	18357	31134		
	OTHER LAND	-	20	29	4	4	-	-	4		
	TOTAL NF AND OTHER	1	126	1488	679	12781	66	18357	31138		
WEST VIRGINIA	NATIONAL FOREST	-	31	97	23	65	5	5	70		
	OTHER LAND	5	-	33	-	-	-	-	-		
	TOTAL NF AND OTHER	5	31	130	23	65	5	5	70		
WISCONSIN	NATIONAL FOREST	10	-	3	-	-	-	-	-		
	OTHER LAND	2	1	6	-	-	-	-	-		
	TOTAL NF AND OTHER	12	1	11	-	-	-	-	-		
WYOMING	NATIONAL FOREST	1	390	17	444	-	-	-	-		
	OTHER LAND	60	3	2	-	-	-	75	75		
	TOTAL NF AND OTHER	61	393	19	444	-	-	75	75		

	* * * NATIONAL FOREST LAND * * *			OTHER INSIDE PROTECTION BOUNDRIES			* * * * * TOTAL * * * * *		
	LIGHTNING	PERSON CAUSED	TOTAL	LIGHTNING	PERSON CAUSED	TOTAL	LIGHTNING	PERSON CAUSED	TOTAL
REGION 01	22159	100172	122331	70017	50696	120715	92176	150870	243046
REGION 02	500	56	556	75	20	95	575	76	651
REGION 03	6212	55224	61436	12	19	31	6224	55243	61467
REGION 04	306	4606	5112	620	1932	2752	1126	6738	7864
REGION 05	40707	16216	56925	54	27755	27809	40761	45973	86734
REGION 06	571	38790	39361	4	-	4	575	38790	39365
REGION 08	2903	13704	16607	-	1259	1259	2903	14963	17866
REGION 09	-	1081	1081	-	194	194	-	1275	1275
REGION 10	-	-	-	-	-	-	-	-	-
ALL REGIONS	73358	232051	305409	70982	51877	152859	144340	315928	458268



Cochiti Fire, Santa Fe National Forest, Region 3.

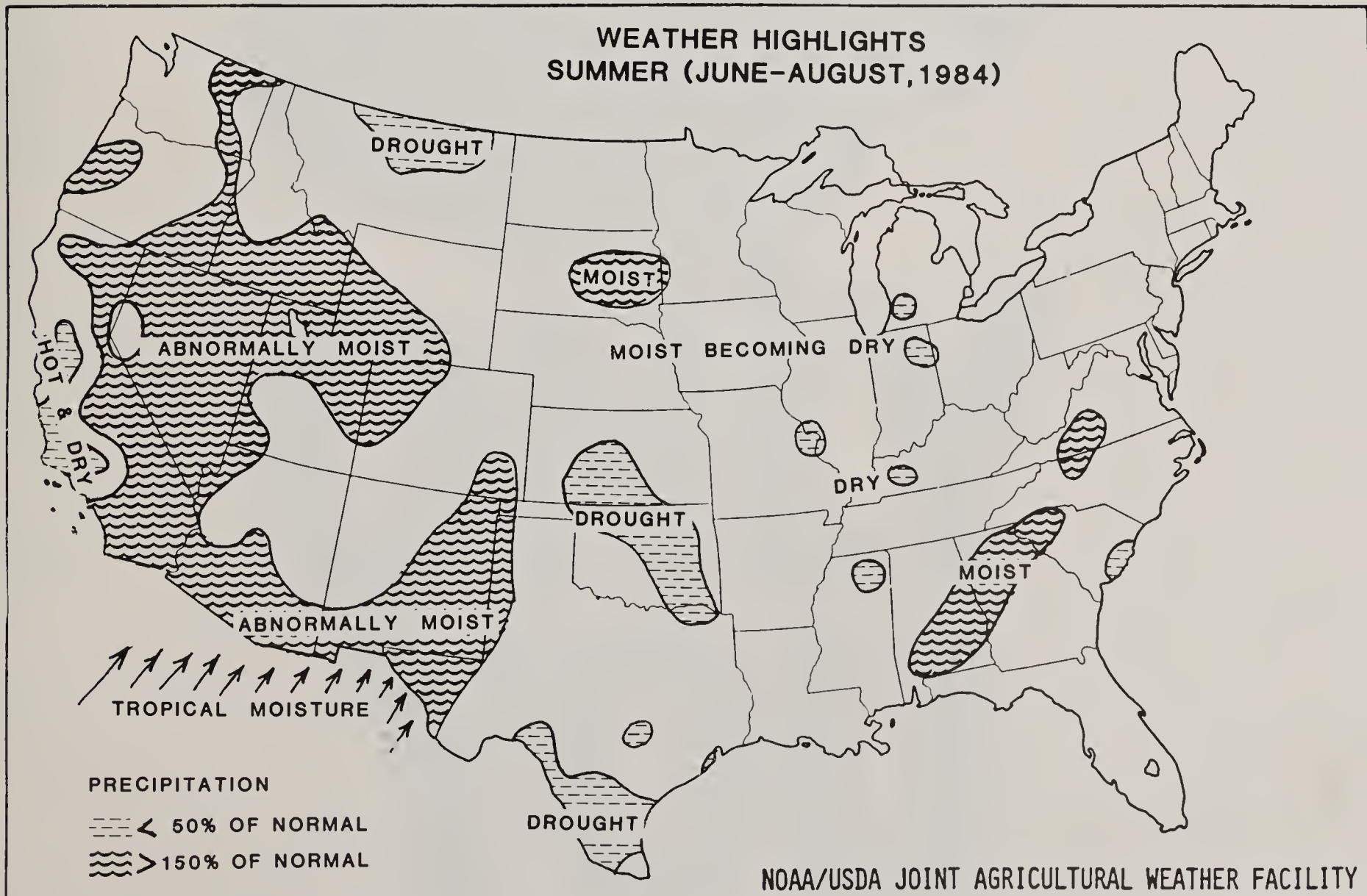
TABLE 5

NUMBER OF WILDFIRES BY MAJOR CAUSES AND SIZE CLASSES

ANNUAL FIRE REPORT 1984

		CLASS A 0-.25 ACRE	CLASS B .26-9 ACRES	CLASS C 10-99 ACRES	CLASS D 100-299 ACRES	CLASS E 300-999 ACRES	CLASS F 1,000-4,999 ACRES	CLASS G OVER 5,000 ACRES	CLASS P UNPL. IGNT. PRESC. FIRE
REGION 01	LIGHTNING	843	154	15	3	1	-	-	93
	PERSON CAUSED	225	73	15	6	3	2	1	-
	ALL FIRES	1,068	227	30	9	4	2	1	93 ✓
REGION 02	LIGHTNING	145	68	7	2	1	-	-	3
	PERSON CAUSED	73	35	11	1	2	-	-	-
	ALL FIRES	218	103	18	3	3	-	-	3 ✓
REGION 03	LIGHTNING	963	220	23	1	4	1	-	71
	PERSON CAUSED	357	151	19	1	1	2	-	-
	ALL FIRES	1,340	371	42	2	5	3	-	71 ✓
REGION 04	LIGHTNING	440	59	8	-	3	-	-	15
	PERSON CAUSED	129	26	4	5	-	1	2	-
	ALL FIRES	569	85	12	5	3	1	2	15 ✓
REGION 05	LIGHTNING	1,251	207	19	4	7	5	1	1
	PERSON CAUSED	896	249	75	14	10	4	1	-
	ALL FIRES	2,147	456	94	18	17	9	2	1 ✓
REGION 06	LIGHTNING	696	104	12	-	-	-	-	12
	PERSON CAUSED	315	59	12	2	5	-	-	-
	ALL FIRES	1,011	163	24	2	5	-	-	12 ✓
REGION 08	LIGHTNING	26	55	17	1	2	-	-	-
	PERSON CAUSED	256	660	281	16	4	2	-	-
	ALL FIRES	282	735	298	17	6	2	-	-
REGION 09	LIGHTNING	9	5	-	-	-	-	-	-
	PERSON CAUSED	171	237	64	5	6	1	-	-
	ALL FIRES	180	242	64	5	6	1	-	-
REGION 10	LIGHTNING	-	-	-	-	-	-	-	-
	PERSON CAUSED	16	4	-	-	-	-	-	-
	ALL FIRES	16	4	-	-	-	-	-	-
ALL REGIONS	LIGHTNING	4,393	872	101	11	18	6	1	195
	PERSON CAUSED	2,438	1,514	481	50	31	12	4	-
	ALL FIRES	6,831	2,386	582	61	49	18	5	195

REGION		TIMBER HARVEST	OTHER HARVEST	FOREST & RANGE MGMT	HIGHWAY	POWER & RECLAMATN	HUNTING	FISHING	OTHER RECREATION	RESIDENT	OTHER
01	NUMBER FIRES	84	14	11	14	44	15	9	89	24	29
	ACRES BURNED	565	943	240	26,969	4,204	85	1	50	2,099	604
02	NUMBER FIRES	6	2	2	6	3	7	4	53	9	10
	ACRES BURNED	3	1	1	230	-	2	1	226	35	276
03	NUMBER FIRES	18	6	11	51	12	23	20	280	37	-
	ACRES BURNED	1,282	244	47	76	1,105	27	79	1,654	43	-
04	NUMBER FIRES	7	15	2	10	4	15	11	56	13	7
	ACRES BURNED	14	6	151	700	325	9	1	9,779	9	191
05	NUMBER FIRES	45	12	24	104	32	41	29	329	154	126
	ACRES BURNED	67	9	1,009	62	522	72	2	6,274	14,051	1,672
06	NUMBER FIRES	60	4	20	1	8	47	32	155	10	41
	ACRES BURNED	1,413	24	666	-	541	6	3	212	25	578
08	NUMBER FIRES	20	5	37	20	15	85	10	41	82	146
	ACRES BURNED	766	59	390	58	124	1,277	23	166	926	3,911
09	NUMBER FIRES	11	4	5	14	19	21	17	65	62	11
	ACRES BURNED	156	2	36	24	746	139	879	2,723	407	59
10	NUMBER FIRES	2	-	1	1	-	1	1	12	-	-
	ACRES BURNED	-	-	-	-	-	-	1	4	-	-
ALL REGIONS	NUMBER FIRES	255	62	113	221	140	255	133	1,080	391	372
	ACRES BURNED	4,271	1,290	2,542	28,121	7,367	1,619	990	23,088	16,795	7,291





**ONLY
YOU**

