



DAK LEAVES

1951

CARLYLE CAMPBELL LIBRARY

CLASS

A
376.8

BOOK

M54V
1951

ACCESSION


34745

MEREDITH COLLEGE
RALEIGH, N. C.



CARLYLE
CAMPBELL
LIBRARY

Meredith College
Raleigh, NC 27607-5298



Digitized by the Internet Archive
in 2010 with funding from
University of North Carolina at Chapel Hill

<http://www.archive.org/details/oakleaves1951bapt>

THE 1951 OAK LEAVES

BETTY JANE HEDGEPEETH..... *Editor*

JEAN MILLER..... *Business Manager*

THIS BOOK WAS PRINTED BY EDWARDS AND BROUGHTON OF RALEIGH, NORTH CAROLINA. THE PAPER USED WAS WARREN'S LUSTRO AND THE TYPE BASKERVILLE. ENGRAVINGS WERE MADE BY THE LYNCHBURG ENGRAVING COMPANY OF VIRGINIA; THE ART WORK WAS DONE BY THE STUDENTS OF MEREDITH COLLEGE UNDER THE SUPERVISION OF ALICE HEONIS, AND THE PHOTOGRAPHY BY THE WALLER AND SMITH STUDIOS OF RALEIGH, HARRY E. COOPER, ELIZABETH REID, AND BY THE STUDENTS AND FACULTY OF MEREDITH COLLEGE.





OAK LEAVES

1951

THE YEARBOOK OF
MEREDITH COLLEGE
RALEIGH, N. C.

Meredith College Library
Raleigh, N. C.



Dedication

In appreciation of one who has given so unstintingly of herself in forming the Meredith that we have grown to love, the 1951 OAK LEAVES is gratefully dedicated to

MISS ELLEN BREWER

Foreword

This Meredith year has meant to us many things. For some it has been the beginning, for others the closing of a college experience that grows in meaning and value throughout its four years. If something of this spirit of maturity, of deepened appreciation, has been enclosed between these covers, the most fervent intent of the 1951 OAK LEAVES Staff will have been realized.



34745







F

A black and white photograph capturing a group of graduates in silhouette as they walk through a brightly lit doorway. The graduates are wearing traditional academic regalia, including gowns and mortarboards. The scene is backlit, creating a strong contrast between the dark figures and the light from the doorway. The overall mood is solemn and significant.

ACULTY



TO MEREDITH COLLEGE STUDENTS:

May this record of happy experiences and commendable achievements be but an introductory, prophetic chapter in your complete book of remembrance.

A handwritten signature in cursive script, reading "Carlyle Campbell".

CARLYLE CAMPBELL
President

Administration

LEISHMAN A. PEACOCK, Ph.D.
Dean of the College



ZENO MARTIN, A.B.
Bursar



LOUISE E. FLEMING, A.M.
Dean of Students



EDWIN S. PRESTON, A.M., LL.D.
Director of Public Relations



Board of Trustees

H. Pat Taylor, President Wadesboro
Beth Carroll Taylor, Vice-President Raleigh
Zeno Martin, Secretary-Treasurer Raleigh

Terms Expire 1950

Annie Ruth Caldwell Baker Lumberton
O. Max Gardner, Jr. Shelby
Robert L. Humber Greenville
Broadus E. Jones Raleigh
Mary P. Lethco Charlotte
L. E. Spikes Burlington

Terms Expire 1951

Howard J. Ford Elkin
J. Rufus Hunter Raleigh
Jack M. Kesler Winston-Salem
Winnie Rickett Pearce Durham
Thos. P. Pruitt Hickory
Beth Carroll Taylor Raleigh
H. Pat Taylor Wadesboro

Terms Expire 1952

Claude U. Broach Charlotte
Maude Davis Bunn Raleigh
H. M. Roland Wilmington
James B. Turner Laurinburg
W. H. Weatherspoon Raleigh
Eph Whisenhunt Clayton

Terms Expire 1953

E. J. Britt Lumberton
C. T. Council Durham
Foy J. Farmer Raleigh
Grace Olive Lane Asheville
L. M. Massey Zebulon
Alfred J. Smith Goldsboro

Executive Committee

W. H. Weatherspoon, <i>Chairman</i>	Broadus E. Jones
Foy J. Farmer, <i>Secretary</i>	L. M. Massey
Maude Davis Bunn	Alfred J. Smith
C. T. Council	Beth Carroll Taylor
J. Rufus Hunter	Eph Whisenhunt

Faculty

ASHLEY, HELEN, M.Mus.

Instructor, Music

BELL, LILA, M.Ed.

Assistant Professor, Education

BREWER, ELLEN DOZIER, A.M.

Professor, Home Economics

CANADAY, ERNEST F., Ph.D.

Professor, Mathematics

CAREY, MARGARET, B.S.

Instructor, Physical Education

COLLINS, HELEN JO, M.S.

Instructor, Chemistry

COOPER, HARRY E., Mus.D., F.A.G.O.

Professor, Music

CROOK, ROGER H., Th.D.

Associate Professor, Religion

CUNNINGHAM, PHYLLIS, A.M.

Instructor, Physical Education

CURRIN, BILLIE RUTH, A.M.

Instructor, Religion

DONLEY, BEATRICE, B.M.

Associate Professor, Music

DORSETT, HARRY K., A.M.

Assistant Professor, Education

EUTSLER, RACHEL R., M.Mus.

Assistant Professor, Music

FREUND, SUANNE H., Ph.D.

Assistant Professor, Modern Languages

GREGORY, MARGARET H., A.M.

Instructor, Business

HANYEN, JENNIE M., A.M.

Associate Professor, Home Economics

HARRIS, JULIA HAMLET, Ph.D.

Professor, English

HILL, MARTHA FRANCES, A.M.

Assistant Professor, Business

HOWERTON, MARTHA HAMRICK, M.Mus.

Instructor, Music

HUCKABEE, ELIZABETH R., A.M.

Instructor, Modern Languages

JOHNSON, MARY LYNCH, Ph.D.

Professor, English





First row, left to right:

KEITH, ALICE BARNWELL, Ph.D.
Associate Professor, History
 KELMAN, HELEN P., A.M.
Instructor, Biology
 LANHAM, LOUISE, Ph.D.
Assistant Professor, English
 LEMON, SARAH MCCULLOH, A.M.
Assistant Professor, History
 McALLISTER, QUENTIN OLIVER, Ph.D.
Professor, Modern Languages
 McCLAIN, RALPH E., Ph.D.
Professor, Religion

Second row:

McCLAIN, JUANITA, M.A.
Instructor, Religion
 NEBLETT, LUCY ANN, A.M.
Assistant Professor, Modern Languages
 PARK, DOROTHY G., Ph.D.
Associate Professor, Psychology and Philosophy
 PETERSON, DORIS, A.M.
Associate Professor, Health and Physical Edu.
 PRATT, STUART, MUS.M.
Professor, Music
 PRICE, HELEN, Ph.D.
Professor, Ancient Languages

Third row:

REAM, MARY ALEXANDER, A.M.
Instructor, Art
 REYNOLDS, DOUGLAS W., B.F.A.
Associate Professor, Art
 ROSE, NORMA, Ph.D.
Assistant Professor, English
 SYRON, LESLIE W., A.M.
Instructor, Sociology and Economics
 TOWNSEND, REBECCA, B., A.B.
Instructor, Music
 TYNER, BUNYAN YATES, A.M.
Professor, Education

Fourth row:

VAUGHN, ELIZABETH, Ph.D.
Professor, Sociology
 WALLACE, LILLIAN PARKER, Ph.D.
Professor, History
 WEST, DORIS, A.M.
Instructor, Sociology and Economics
 WHITAKER, FORRESTINE, M.A.
Professional Diploma in Musical Education;
Instructor, Music
 WOODMAN, RUTH S., A.M.
Instructor, Music
 YARBROUGH, MARY E., Ph.D.
Professor, Physics and Chemistry

Faculty

BAITY, HAZEL, A.B. in L.S.
Librarian

EGERTON, MARY
House Director

ENGLISH, ELIZABETH W.
Secretary to Bursar

SARA W. FERRELL
Secretary to the Dean and Registrar

GREENE, JANE, A.B. in L.S.
Assistant Librarian

GRIMMER, MAE, A.B.
Secretary of Alumnae Assn.

GWYER, BETTY
Secretary to Bursar

HARKINS, RUBY LEE, R.N.
Nurse

HARRIS, DORIS, H., A.B.
Assistant Librarian

MARSH, VERA TART
Registrar

REID, ELIZABETH D., A.B.
Publicity Director

RHODES, LATTIE,
Secretary to President

SAWYER, ELIZABETH
Assistant house director

SCHWARTZ, MARGARET, M.A.
Assistant Dean of Students

SENER, WILLIAM, M.D.
College Physician

SNOW, JOSEPHINE, A.B.
Secretary to the Director of Public Relations

TEAGUE, JANET, R.N.
Nurse

WATTS, LULU
Dining Room Hostess

YEAGER, BETTY JEAN, A.B.
Secretary to the Dean of Students





C



CLASSES



Senior Class

"Ah, to be a senior." We made it! And we're still happy. It's rather amazing for us to realize that along the way in our struggle to get here, we've gained much from our Alma Mater and are going away with a host of memories when we take off our caps and gowns for the last time. Besides, we'll have something else we're grateful for—an education. At long last we have decided that maybe that's what we were after all the time. As it is this last year that brings us to a realization and understanding of the ideas, which we have been absorbing, we'll probably look back on our Senior Year as the most vivid. "It was when I was a senior that I began to understand. . . ."



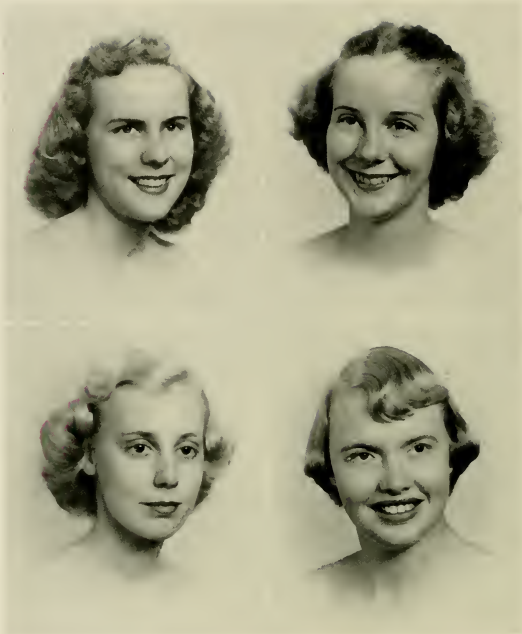
SHIRLEY BONE
President



President, Shirley Bone; Vice-President, Mary Bland Josey; Secretary, Evelyn Barden; Treasurer, Donna Walston; Adviser, Dr. Mary Yarborough.

The Class of 1951

ALLEN
ALMOND



ALTMAN
ATKINS

DOROTHY ALICE ALLEN
Cherryville, N. C.

Astro

Music-Organ

McDowell Music Club 1, 2, 3, 4, Vice-President 2; Choir 2, 3; Sigma Alpha Delta 2, 3, 4, Treasurer 2, 3, President 4; Sigma Pi Alpha 2, 3, 4; Kappa Nu Sigma 4, Secretary 4; Dean's List.

FRANCES ELIZABETH ALMOND
Salisbury, N. C.

Phi

Spanish

Society Play 1; Colton English Club 2; Committee of 150 3; Sigma Pi Alpha 1, 2, 3, 4, Publicity Chairman 2, Vice-President 3, President 4; Freeman Religion Club 3, 4; Kappa Nu Sigma 3, 4; Education Club 4; Spanish Club 4; Dean's List.

FRANCES EMILY ALTMAN
Dunn, N. C.

Astro

English

Student Government Council, Dorm Vice-President 3, Dorm President, 4; *Twig* Typist 2, 3, Alumnae Editor 3; OAK LEAVES 3; Freeman Religion Club 1, 2; Secretary 2; Y.W.A. 1, 2, 3, Social Chairman 2, Program Chairman 3; Little Theatre 1, 2, 3, 4, Pledge 1, 2, 3, Member 4; Sigma Pi Alpha 2, 3, 4; Colton English Club 3, 4; Committee for Religious Emphasis Week 3; Folk Dance Club 3, 4; Dean's List; *Who's Who Among Students in American Colleges and Universities*.

THELMA JEANETTE ATKINS
Cary, N. C.

Phi

Business

Tomorrow's Business Women's Club 2, 3, 4; Monogram Club 4; Basketball Varsity 2, 3, 4; OAK LEAVES Staff 3, 4; Y.W.A. 1, 2; Little Theatre Pledge 1, 2, 3; Stunt 1, 4; Religious Emphasis Week Committee 2.



ATKINSON
AUSBON



BAILEY
BARDEN

MRS. EUGENIA GRAY ATKINSON
Cary, N. C.

Phi
Mississippi State College for Women 1; University of Mississippi 2, 3; Glee Club 1, 2; Vesper Choir 1, 2; Spanish Club 2; Treasurer of Class 2; Y.W.C.A. Cabinet 2; Education Club 4; "Mrs." Club 4.

Education

VIVIAN JOYCE BAILEY
Plymouth, N. C.

Astro
Acorn 3, 4, Class Editor 3; Twig 3, 4, Chief Typist 4; Little Theatre Pledge 2; Colton English Club 2; Tomorrow's Business Women's Club 2, 3, 4, Secretary 3, President 4; Sigma Pi Alpha 3, 4, Secretary 3; Dean's List.

Business

BETSY WHITE AUSBON
Tarboro, N. C.

Astro
OAK LEAVES 3, 4, Associate Editor 4; Home Economics Club 1; Education Club 2, 3, 4, Secretary 3, Vice-President 4; Psi Chi Club 3, 4; I.R.C. 4.

Education

MARY EVELYN BARDEN
Rose Hill, N. C.

Astro
S.G. President Summer School; Home Economics Club 1; Freeman Religion Club 2; Soccer Varsity 2; Education Club 3, 4; Glee Club 3; Class Secretary 4; May Court 4; Superlative.

Education

The Class of 1951

BARRY BENSON BAREFOOT

Nauger, N. C.

Astro

Twig Staff 3, 4, Advertising Manager 4; Religion Club 1, 2; Education Club 3, 4; Hoef Print Club 4; Student League of Women Voters 4.

Education



BEVERLY THORNE BATCHELOR

Nashville, N. C.

Astro

B.S.U. Council, Publicity Director 2; Counsellor 2; *Twig* 2, 4; *Acorn* 4; Astro Marshal 3; Freeman Religion Club 1, 2, 3, 4, Vice-President 3, President 4; Y.W.A. 2, 3, 4; Glee Club 2; Committee of 100 2, 3; Kappa Nu Sigma 3, 4; Sigma Pi Alpha 2, 3; Dean's List.

Religion



MARGARET BURNETT BENBOW

Winston-Salem, N. C.

Phi

S.G. Council 1, 3, Treasurer 3; OAK LEAVES 2, 3; Counsellor 2; *Acorn* 2; Student League of Women Voters 1, 2, 3, President 4; I.R.C. 2, 3, 4; Little Theatre 2, 3, 4; Sigma Pi Alpha 2, 3, 4; Alpha Psi Omega 4; German Club President 4; Dean's List.

History

JANE EVELYN BIGGS

Florence, S. C.

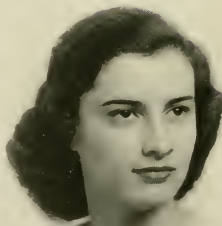
Phi

Folk Dance 1, 2, 3, 4; Education Club 3, 4; Sociology Club 3.

Education



BAREFOOT
BATCHELOR



BENBOW
BIGGS

Meredith College



CAROL MALINDA BIZZELLE
Seven Springs, N. C.

Phi *Education*
Campbell College 1, 2; Girls' House Council 2; Sunday School Officer 1, 2; B.T.U. Officer 1; Meredith College 3, 4; Education Club 3, 4.

ELIZABETH ESTELLA BOGGS
College Park, Georgia

Phi *Business*
B.S.U. Council, Secretary 2; Tomorrow's Business Women's Club 3, Program Chairman 4; Psi Chi Club 4; Y.W.A. 1, 2, 3, 4; Class Bee Hive Representative; Little Theatre Pledge 2, 3; Folk Dance Club 3, 4; Dean's List.



RUBY EILEEN BONE
Rocky Mount, N. C.

Phi *Education*
W.C.U.N.C. 1; Hall Proctor 1; A.A. Board 1; Dikean Society 1; Meredith College 2, 3, 4; Education Club 2, 3, 4; Alpha Rho Tau 4.

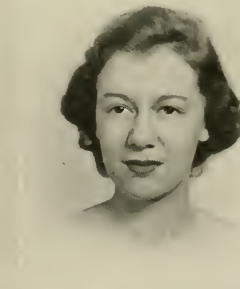
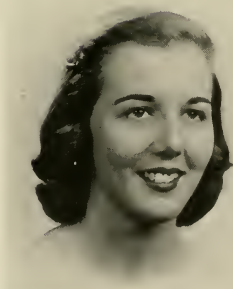
SHIRLEY SUE BONE
Nashville, N. C.

Phi *Religion*
Freshman Counsellor 2; *Twig* Staff 2, 3; A.A. Board, Publicity Chairman 3; Class President 4; Freeman Religion Club 1, 2, 3, 4; Y.W.A. 1, 2, 3, 4; Granddaughter's Club 1, 2, 3, 4; Chairman of Needlework Guild 2; Committee of 100 2, 3; Greater B.S.U. Council 1; Dean's List.

BIZZELLE
BOGGS

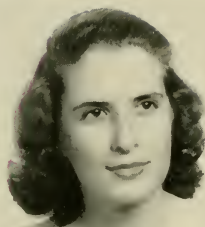
E. BONE

S. BONE



The Class of 1951

BORDEAUX
BOWEN



BRAMBLE
BRANTLEY



DAPHNE ANN BORDEAUX
Wallace, N. C.

Phi
Tomorrow's Business Women's Club 2, 3, 4; Glee Club 1; Y.W.A. 1, 2; Marshal 2; May Court 1.

Business

MARY ELIZABETH BOWEN
Asheville, N. C.

Astro
Hoofprint Club 1, 2, 3; Sigma Pi Alpha 2, 3, 4; Alpha Psi Omega 2, Secretary 3, 4; Little Theatre, 1, 2, Secretary 3, President 4; *Twig* 2, 3, 4; Colton English Club 3, 4; Dean's List.

English



JENNETT BRAMBLE
Fayetteville, N. C.

Phi
Sigma Pi Alpha 1, 2, 3, 4; Folk Dance Club 1, 2, 3, 4; Canaday Mathematics Club 2, 3, 4, Secretary-Treasurer 3; Education Club 2, 3, 4; Barber Science Club 3, 4; Kappa Nu Sigma Treasurer; Dean's List.

Mathematics

ANNIE PEARL BRANTLEY
Spring Hope, N. C.

Phi
House Council 2; Education Club 3, 4; Little Theatre 3, 4, Vice-President 4; Alpha Psi Omega 4.

Education



BREWER
BRITT

BRUNSON
BURCH

BOBBIE BREWER
Roseboro, N. C.

Astro

Sociology

W.C.U.N.C. 1, 2; Basketball 1, 2; Golf Club; Physics Club 2; Meredith College 3, 4; Sociology Club 3, 4; Psi Chi 3, 4; French Club 4; Hoofprint Club 3; Basketball 3, 4.

AMANDA LOUISE BRITT
Elizabethtown, N. C.

Phi

Sociology

Y.W.A. 1, 2, 3, 4; Freeman Religion Club 1, 2, 3, 4; Sociology Club 2, 3, 4, Reporter 4; McDowell Music Club 2, 4; Choir 2, 3.



HELEN MARIE BRUNSON
Florence, S. C.

Phi

Education

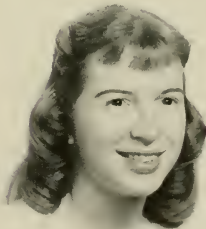
B.S.U. Council 2, 3; S.G. Council 4; Counsellor 2, 3, 4, Chief Counsellor 4; Freeman Religion Club 1; Committee of 100 2, 3; Education Club 3, 4, Social Chairman 3; Nominating Committee Chairman 4.

JANE EARL BURCH
Charlotte, N. C.

Phi

Religion

Y.W.A. Circle Devotional Chairman 1, 3, Circle President 2; McDowell Music Club 2, 3, 4, Program Chairman 3, President 4; Freeman Religion Club 3, 4; Sigma Pi Alpha Vice-President 4; Spanish Club 4.



The Class of 1951

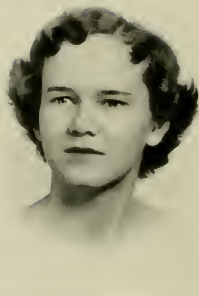
BURNHAM
CAMPBELL



GRACE DALZEL BURNHAM
Asheville, N. C.

Astro
Pembroke College in Brown University 1, 2; Meredith College 3, 4; Religious Emphasis Week Committee Chairman 3; Astrotekton President 4; Little Theatre 3, 4; Freeman Religion 3, 4.

Religion



DORIS ANNE CHAMPION
Shelby, N. C.

Phi
Tevig 3, 4; Colton English 3, 4; Hoof Print Club 3, 4; Education Club 4; Sigma Pi Alpha 3, 4; Dean's List

English

ELIZABETH PEARSOR CAMPBELL
Buie's Creek, N. C.

Astro
Campbell College 1, 2; Basketball 1, 2; A Cappella Choir 1, 2; Epsilon Pi Eta Honor Society 1, 2; Chemistry Club 2; Meredith College 3, 4; Education Club 3, 4; Dean's List.

Education

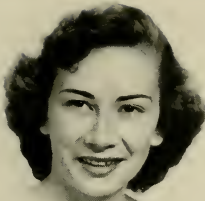
BETTIE FRANCES COMPTON
Burlington, N. C.

Phi
Counsellor 2; McDowell Music Club 1, 2, 3, 4, Secretary 2, President 3; Sigma Alpha Iota 2, 3, 4, Chaplain 2, 3; Group of Nine Accompanist 2; Glee Club 2, 3, Accompanist 3; Choir 2, 3.

Piano



CHAMPION
COMPTON



SUE CONLEY
Franklin, N. C.

Astro
Mars Hill College 1, 2; Archery Club 2; Dramatic Club 2; Nonpareil Literary Society 1, 2; Meredith College 3, 4; Tomorrow's Business Women's Club 3, 4, Secretary 4; Education Club 4.

Business



ELEANOR BRYSON COTHRAN
Raleigh, N. C.

Astro
Woman's College 1, 2; Meredith College 3, 4; Education Club 3, 4.

Education

NANCY REBECCA COOK
Clemmons, N. C.

Phi
Mars Hill College 1, 2; Meredith College 3, 4; MacDowell Music Club 3, 4; Folk Dance Club 3, 4; Sigma Alpha Iota 3, 4, Sergeant-at-Arms 4; Chorus 3, 4; Education Club 4; Orpheon Music Club 1, 2; Girl's Choir 2; College Marshal 2.

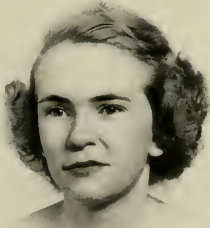
Public School Music

MARY CAROLYN CROOK
Albemarle, N. C.

Phi
Woman's College 1; Meredith College 2, 3, 4; S.G. 3; Twig Staff 3; Tomorrow's Business Women's Club 2, 3, 4; Folk Dance Club 2, 3, 4; Sigma Pi Alpha 3; Education Club 4; Dean's List.

Business

COTHRAN
CROOK



The Class of 1951

CURRIN
CUTTS



DAVIS
DEAN



SYLVIA VIRGINIA CURRIN
Oxford, N. C.

Phi

Home Economics

S.G. Council 3; Freshman Counsellor 2, Secretary of Phi Society 3; Y.W.A. 1, 2, 3, 4; Home Economics Club 1, 2, 3, 4, Secretary 2, President 4; Folk Dance Club 3, Education Club 4.

LYDIA VIRGINIA DAVIS
Rock Hill, S. C.

Astro

Mathematics

Canady Math Club 2, 3, 4, Reporter 3, President 4; Granddaughters' Club 1, 2, 3, 4, Secretary 3; Religion Club 2, 3, 4; Education Club 3, 4.

DOROTHY CURRIN CUTTS
Oxford, N. C.

Phi

Sociology

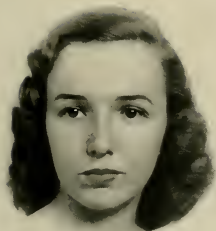
McDowell Music Club 1, Sociology Club Treasurer 2, 3, 4; Psi Chi Club 3, 4; Little Theatre 4; College Marshal 4; May Court Representative 1, May Queen.

BETTY LOU DEAN
Louisburg, N. C.

Astro

Education

Student League of Women Voters 1; Y.W.A. 1, 2, 3, 4; Choir 2; Education Club 3, 4.



DENNIS
DIXON



EDWARDS
ELLIOTT

BARBARA JOANNE DENNIS
Durham, N. C.

Phi
Y.W.A. 1, 2, 3, 4; Hoof Print Club 2; Choir 2, 3;
Education Club 3, 4; Treasurer 3; Folk Dance Club
3, 4; Little Theatre 3, 4; I.R.C. 4.

Education

RITA WELBORN EDWARDS
Greer, S. C.

Astro
Bob Jones University 1, 2; Classic Players 1; Meredith
College 3, 4; *Acorn* 4; Religion Club 3, 4; Psi Chi Club
3, 4; Y.W.A. Circle Leader, 4.

Religion

CAROLYN DIXON
Reidsville, N. C.

Phi
Sociology Club 3, 4.

Sociology

MILLICENT VIRGINIA ELLIOTT
Amityville, N. Y.

Astro
Hoof Print Club 1; Education Club 3, 4; McDowell
Music Club 4.

Education

The Class of 1951

PATSY ROBINSON EMORY

Northside, N. C.

Astro *History and Government*
S.G. Council 3, 4, Vice-President 4; *Acorn* Business Staff 3; Y.W.A. 1, 2, 3, 4, Hall Program Chairman 3; Sigma Pi Alpha 2, 3, 4; State Student Legislature Representative 2, 3; Student League of Women Voters 2, 3, 4, Vice-President 3; I.R.C. 3, 4; Silver Shield 4; *Who's Who Among Students in American Colleges and Universities*; Dean's List.



FRANCES ANNE ESTRIDGE

Florence, S. C.

Astro *Public School Music*
B.S.U. Council 2, Music Director 2; *Astro* Sergeant-at-Arms 2, Secretary 3, Chief Marshal 4; McDowell Music Club 1, 2; Y.W.A. 1, 2, 3, 4, Program Chairman 4; Sigma Alpha Iota 2, 3, 4, Vice-President 3; Education Club 3, 4, Social Chairman 3, Music Director 4.



ANNE LYONEL FOCHE

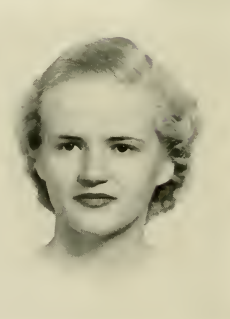
Rock Hill, S. C.

Astro *Business*
Student Government Council 4; *Acorn* 4; *Twig* 3; Y.W.A. 1, 2, 3, 4; Tomorrow's Business Women's Club 2, 3, 4; Education Club 3, 4.

MARTHA ELAINE FUTRELL

Murfreesboro, N. C.

Astro *Education*
Freeman Religion Club 2, 3, 4, Secretary 4; Education Club 2, 3, 4; I.R.C. 4; Y.W.A. 1, 2, 3, 4; Committee of 100 3.



EMORY
ESTRIDGE

FOCHÉ
FUTRELL

BETSY JORDAN GOLDSTON

Raleigh, N. C.

Astro Home Economics Club 1, 2, 3, 4, Vice-President 3; *Twig* Staff 1; Sigma Pi Alpha 2, 3, 4; Education Club 4; Nominating Committee 4; Kappa Nu Sigma 3, 4, Vice-President 4; Freshman and Transfer Counsellor 2; 2nd Vice-President of Day Students 2; 1st Vice-President of Day Students 3; President of Day Students 4; Dean's List; *Who's Who in American Colleges and Universities*.

MARGOT IRVIN GRIMES

Charlotte, N. C.

Astro Mars Hill College 1, 2; Scriblerus Club 1, 2; Nonpareil Literary Society 1, 2; Glee Club 1, 2; Meredith College 3, 4; I.R.C. 3, 4, Vice-President 4; Sigma Pi Alpha 3, 4; Student League of Women Voters 4; Dean's List. *History*

ANNE LEGRACE GUPTON

Raleigh, N. C.

Astro *Art* *Twig* Staff 1, 2, 3, 4, Art Editor 3; *Acorn*, Senior Class Editor 4; Alpha Rho Tau, Psi Chi; Colton English 2, 3, 4; Little Theatre, 2, 3, 4, Alpha Psi Omega, 4.

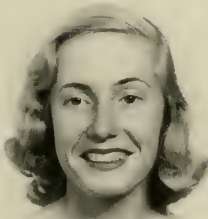
GRETA VERNON HALL

Miami, Florida

Astro *Business* Mars Hill College 1, 2; Cljo Literary Society 1, 2; B.T.U. 1, 2; Y.W.A. 1, 2; German Club 2; Meredith College 3, 4; Tomorrow's Business Women's Club 3, 4; Colton English Club 4; McDowell Music Club 4.

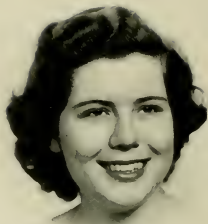
GOLDSTON
GRIMES

GUPTON
HALL



The Class of 1951

HARE
HARRELL



HAYES
HEDGEPEETH



MARTHA HOLT HARE
Holly Springs, N. C.

Astro A.A. Board 3; Folk Dance Club 2, 3, 4, Manager 3; *Education*
Twig Business Staff 2, 3, Business Manager 4; Sigma
Pi Alpha 2, 3, 4; Education Club 3, 4; Dean's List.

ALICE ANNE HARRELL
Tarboro, N. C.

Astro Y.W.A. 1, 2, 3, 4; Tomorrow's Business Women's
Business Club 2, 3, 4; Program Committee Religious Emphasis
Week 3; Education Club 3, 4.

CHRISTINE HAYES
Elkin, N. C.

Phi Tomorrow's Business Women's Club 3, 4; Education
Business Club 4.



BETTY JANE HEDGEPEETH
Bound Brook, N. C.

Astro *Art*
Twig, Art Editor 2; OAK LEAVES, Art Editor 2, Editor
4; Vice-President Sophomore Class; President Junior
Class; Granddaughters' Club 1, 2, 3, 4; Hoof Print
Club 1, 2, 3; Alpha Kho Tau 2, 3, 4; Committee of
100, 2; Nominating Committee, 3, 4; Silver Shield 4;
Superlative; Dean's List.



HEFNER
HELMS

HENRY
HICKS

NANCY JOY HEFNER
Greer, S. C.

Astro

Art

Twig Staff 3, Art Editor; B.S.U. Publicity Manager 3; Choir 2, 3, 4, Librarian 3, Publicity Manager 4; Folk Dance Club 2, 3; Y.W.A. 2, 3, Publicity Manager 3; Alpha Rho Tau 1, 2, 3, 4; Freeman Religion Club 1.



DOROTHY LEE HELMS
Raleigh, N. C.

Astro

Education

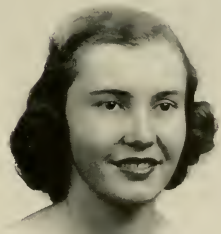
Twig 4; Education Club.

VIRGINIA ELOISE HENRY
Hendersonville, N. C.

Phi

Psychology

Alpha Rho Tau 1, 3, 4, Secretary-Treasurer 4; Choir 2; I.R.C. 2; Little Theatre Pledge 1, 2, 3; Y.W.A. 1, 2, 3; Phi Chi Club 3, 4, Treasurer 4, Publicity 4; Committee of 100 3; Dean's List.



ANNA LEIGH HICKS
Henderson, N. C.

Astro

Education

Education Club 2, 3, President 4; Summer School 1, 2; Alpha Rho Tau 3; Freeman Religion Club 1, Choir 3.

The Class of 1951

HLASS
HODGES



LAURICE JIRYES HLASS
Jaffa, Palestine

Phi
British Institute 1, 2; A.A. Treasurer 2; *The Light*
Editor 1; Class President 2; Student Government
Secretary; Meredith College 3, 4; International Re-
lations Club 3, 4; Sociology Club 3, 4; Colton English
Club 3, 4; Sigma Phi Alpha 4; Alpha Kappa Delta 4;
Dean's List.

Sociology

INEZ HOLLAND
Salemberg, N. C.

Phi
Pincland College 1, 2; Meredith College 3, 4; Education
Club 3, 4; Tomorrows Business Women's Club 3;
Y.W.A. 3, 4.

Education

MELVA HOPE HODGES
Washington, N. C.

Astro
A.A. Board 2, 3, 4, Basketball Manager 2, Secretary
2; Vice-President 3, President 4; Monogram Club
2, 3, 4; Hockey Varsity 2, 3, 4; Soccer Varsity 2; Sped
Ball Varsity 3; Basketball Varsity 1, 2, 3, 4; Softball
Varsity 1, 2, 3; Barber Science Club 2, 3, 4; Education
Club 3, 4; Folk Dance Club 3, 4; Superlative 4; Dean's
List.

Biology

BETH HORD
Kings Mountain, N. C.

Astro
Freshman Counsellor 2; Choir 2, 3; Glee Club 3; Mc-
Dowell Music Club 3, 4; Sigma Alpha Iota 4.

Public School Music



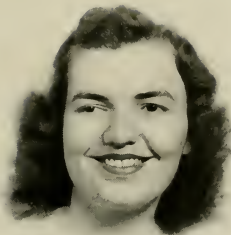
HOLLAND
HORD



EMMA LEE HOUGH
Charlotte, N. C.

Astro
Twig 2, 4; B.S.U. 3, 3rd Vice-President; *Acorn* 4, Business Manager; Class President 2; Astro Marshal 1; Freeman Religion Club 1; Sigma Pi Alpha 1, 2, 3, 4; Little Theatre 1, 3, 4, Vice-President 3, Publicity Chairman 4; Colton English Club 3, 4, Vice-President 3, President 4; Dean's List.

English



LINDA EILEEN HUDSPETH
Winston-Salem, N. C.

Phi
Mars Hill College 1, 2; Spanish Club Vice-President 2; Scriblerus Club 1; Archery Club 2; Y.W.A. 1, 2; Sunday School Officer 2; Training Union Officer 1, 2; Meredith College 3, 4; S.G. Council 4, Dorm President 4; Education Club 3, 4; Freeman Religion Club 3, 4; Folk Dance Club 3, 4; Y.W.A. Hall President 3, 4; Dean's List.

Education

JUANITA HUBBARD
Charlotte, N. C.

Phi
Queen's College 1; Le Cercle Francais 1; Wingate Junior College 2; O'Henry Literary Society, Secretary 2; B.S.U. 2; Y.W.A. 2; Meredith College 3, 4; Y.W.A. 3, 4; Sociology Club 3, 4.

Sociology

MACLYN MACKIE HUMPHREY
Granite Falls, N. C.

Phi
Mars Hill College 1, 2; Student Council 2; Band Officer 1; May Queen 2; Meredith College 3, 4; "Mrs." Club 4; Folk Dance 3; Choir 3; May Court Attendant 3; Education Club 4.

Education

HUDSPETH
HUMPHREY



The Class of 1951

JAMES
B. JOHNSON



L. JOHNSON
JONES



SARAH MARGARET JAMES
Waynesville, N. C.

Phi
Mars Hill College 1, 2; Meredith College 3, 4; Sociology Club 3, 4; Psi Chi Club 3, 4; Y.W.A. 3, 4; Alpha Kappa Delta 4; Folk Dance Club 4.

Sociology

LOIS JOHNSON

Phi
Home Economics Club 2, 3, 4; Education Club 3, 4.

Home Economics

BETTY FRANCES JOHNSON
Angier, N. C.

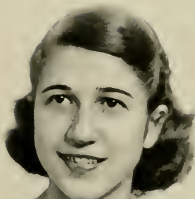
Astro
Mars Hill College 1, 2; Society (Clio) Marshal; W.A.A. Art and Poster Chairman; *Hilltop* Reporter; Scriblerus Club; Meredith College 3, 4; Education Club 3, 4; I.R.C. 4.

Education

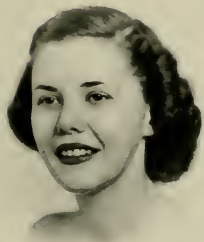
CANEY VIRGINIA JONES
Norfolk, Virginia

Phi
Phi Sergeant-at-Arms 2, President 4; Y.W.A. 1, 2, 3, 4; Little Theatre 2, 3, 4, Reporter 2; Sociology 2, 3, 4, Reporter 2; Psi Chi Club 3, 4; Alpha Psi Omega 4; Silver Shield 4.

Sociology



JOSEY
JOYNER



KILLINGER
KINKEAD

MARY BLAND JOSEY
Tarboro, N. C.

Astro A.A. Board 2, 3, 4; *Twig* Reporter 2; Astro Vice-President 3; Class Treasurer 4; Sigma Pi Alpha 2, 3, 4, Treasurer 3; Canaday Math Club 3, 4; Freeman Religion Club 3, 4; Kappa Nu Sigma 3, President 4; Dean's List; *Who's Who Among Students in American Colleges and Universities*.

Mathematics

MARJORIE JOYNER
Winston-Salem, N. C.

Astro S.G. Council 2, 3, 4, Secretary 3; President 4; *Oak Leaves* Business Staff 2; *Twig* 1, 2, Reporter 1, Associate Editor 2; Freshman Class President; Psi Chi Club 4; Student League of Women Voters 3, 4; Sigma Pi Alpha 2, 3, 4; Silver Shield Vice-President; Alpha Rho Tau; Student Legislature; Student Chairman of Religious Focus Week 3; *Who's Who Among Students in American Colleges and Universities*; Superlative; Dean's List.

Psychology

ROSE MARIE KILLINGER
Marion, Va.

Astro Sullins College 1, 2; Annual Staff 2; Vested Choir 1, 2; Glee Club 1, 2, Secretary 2; Virginia Club 1, 2; May Court 2; Meredith College 3, 4; OAK LEAVES 4; Sociology Club 3, 4; Psi Chi Club 4.

Sociology

ALICE MARCINE KINKEAD
Rocky Mount, N. C.

Astro Barber Science Club 2, 3, 4, Reporter 4; Education Club 4; Psi Chi Club 4; Dean's List.

Biology

The Class of 1951

SHEILA MARGARET KNAPP
Washington, D. C.

Phi
I.R.C. 1; Y.W.A. 1, 2; Alpha Rho Tau 3; Sociology Club 2, 3, 4, Reporter 3, Vice-President 4; Psi Chi Club 3, 4, Secretary 4; Stunt 4.

Sociology



REBECCA KNOTT
Oxford, N. C.

Phi
Twig Reporter 2, 3; Counsellor 2, 3, 4; Freeman Religion Club 1, 2, 3, 4, Publicity 3, Vice-President 4; Y.W.A. 2, 3, Devotional Vice-President 3, Hall Officer 2, 4; Softball Varsity 2; Choir 2, 3, 4, Librarian 4; Glee Club 3; Dean's List.

Religion



ROSALIND KNOTT
Oxford, N. C.

Phi
B.S.U. Council 1, 2, 3, Training Union Director 1, Treasurer 2, 2nd Vice-President 3; *Twig* 1, 2, 3; Freeman Religion Club 1, 2, 3, 4; Y.W.A. 1, 2, 3, 4; Choir 2, 3, 4; Colton English Club 3, 4; Alpha Rho Tau 3, 4; Chairman of Continuations' Committee for Religious Focus Week 3.

Religion

EMILJA ELAINE KUTSCHINSKI
Raleigh, N. C.

Phi
Glee Club 1, 2, 3; Chier 1, 2, 3; Alpha Rho Tau 3, 4; Sociology Club 3, 4; Little Theatre 4.

Sociology



KNAPP
REBECCA KNOTT

ROSALIND KNOTT
KUTSCHINSKI

Meredith College



KATHERINE HOPE LATTA
Bunnlevel, N. C.

Phi
Campbell College 1, 2; House Council Secretary 2; B.S.U. Council 2; B.T.U. Director 2; Meredith College 3, 4; Education Club 3, 4; McDowell Music Club 4.

Education

PATRICIA GAY LAWRENCE
Raleigh, N. C.

Phi
Bob Jones University 1; Vice-President of the Alliance Sunday School 1; Harriet Parker Society Cheerleader 1; Meredith College 2, 3, 4; S.G., President of Dormitory 4; Y.W.A. Hall Devotional Chairman 3; Sigma Pi Alpha 2, 3, 4; Freeman Religion Club 3, 4; Education Club 3, 4; Little Theatre Pledge 2, 3, 4; Glee Club 3; Superlative; Dean's List.

Education



MARGARET LEACH
Kinston, N. C.

Astro
Canaday Math Club 3, 4, Secretary-Treasurer 4; Sociology Club 2; Equitation Club 2; Psi Chi Club 4; House Council 2.

Mathematics

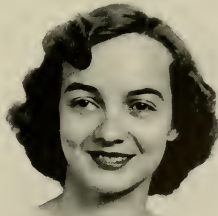
MATTIE LOU LEE
Willow Springs, N. C.

Phi
Flora Macdonald College 1, 2; Meredith College 3, 4; Home Economics Club 1, 2, 3, 4; McDowell Music Club 4.

Home Economics

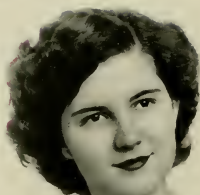
LATTA
LAWRENCE

LEACH
LEE



The Class of 1951

McRACKAN
MASON



MASSEY
MATTHEWS



ANNE LUCILE McRACKAN
Southport, N. C.

Phi
S.G. Council 3; *Acorn* 3; Counsellor 2; Sophomore Class Secretary; *Phi* Vice-President 3; Y.W.A. 1, 2; Freeman Religion Club 1, 2; Granddaughters' Club 1, 2, 3, 4; Co-chairman of Needlework Guild 2; Vice-President 3; President 4; Tomorrow's Business Women's Club 3, 4; Folk Dance Club 3, 4; Dean's List.

Business

JOANNE MASON
Portsmouth, Va.

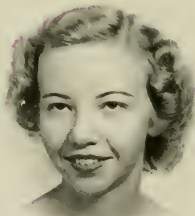
Phi
Twig 3; OAK LEAVES 4; Choir 2, 3; Librarian 3; Glee Club 2, 3; Chorus Accompanist 4; Vocal Ensemble Accompanist 3, 4; Education Club 4; Dean's List.

Public School Music

CAROLYN VIVIAN MASSEY
Zebulon, N. C.

Astro
B.A.U. Vice-President 3; President 4; Y.W.A. Circle Leader 1; General Secretary 2; Freeman Religion Club 1, 2, 3, 4; Committee for Religious Emphasis Week 2, 3, 4; Choir 2, 3; Psi Chi Club 3, 4; Education Club 3, 4; Soccer Varsity 2; Silver Shield 3, 4; President 4; Dean's List; *Who's Who Among Students in American Universities and Colleges*.

Religion



STELLA MATTHEWS

Phi
Canaday Math Club 2, 3, 4; Vice-President 4; Barber Science Club 3, 4; Treasurer 4; Y.W.A. 1, 2, 3, 4.

Mathematics



MAULDIN
MILES

LITA MAE MAULDIN
Charlotte, N. C.

Phi Mars Hill 1, 2; Nonpariel Literary Society 1, 2; Scrib-
lerus Club 1, 2, Vice-President 2; Glee Club 1, 2; Mer-
edith College 3, 4; Colton English Club 3, 4, Secretary-
Treasurer 4; Student League of Women Voters 4,
Reporter 4; I.R.C. 4; Y.W.A. 3, 4, Hall President 4,
B.T.U. 3, 4, President 3, 4; Little Theatre 3, 4.

English

BETSY JEAN MILES
Raleigh, N. C.

Astro Mars Hill Colege 1, 2; Meredith College 3, 4; I.R.C.
4; Student League of Women Voters 4.

History

MARILYN LEE MILLS
Charlotte, N. C.

Astro A.A. Board 2, 3, 4, Swimming Manager 2, Individual
Sports Manager 3, Publicity Manager 4; I.R.C. Re-
porter 1; Education Club 2; Sigma Pi Alpha 2; Alpha
Psi Omega 4; Psi Chi President 4; Little Theatre Sec-
retary 4; Superlative.

Psychology

VERTIE MAE MITCHELL
Durham, N. C.

Phi Campbell College 1, 2; Epsilon Pi Eta Honor Society
2; Student Government 2; Girls' House Council Presi-
dent 2; A Cappella Choir 1, 2; Superlative 2; May Court
2; Meredith College 3, 4; Choir 3; Education Club 4;
McDowell Music Club 4.

Public School Music



The Class of 1951

MOORE
MORGAN



SANDRA MOORE
Florence, S. C.

Astro
Barber Science Club 2, 3, 4, Secretary 3; Education Club 3, 4; S.G. Council 3, 4; Freshman Counsellor 2; Sunday School Officer 4; Class Secretary 3; Dean's List.

Biology

ANNE MARIE MORTON
Raleigh, N. C.

Astro
Freshman Counsellor 2; Alpha Rho Tau 1, 3, 4, President 4; *Twig* 3; Psi Chi Club 3, 4; Dean's List.

Art

ANNIE DRAKE MORGAN
Spring Hope, N. C.

Phi
A.A. Board, Hockey Manager 2; S.G. 3, 4; Counsellor 2, 3; Barber Science Club 3, 4; Monogram Club 3, 4; Education Club 4; Silver Shield 3, 4; Dean's List.

Biology

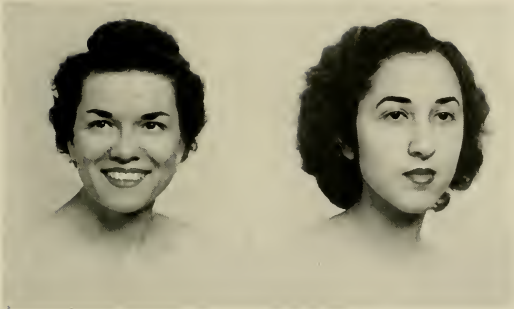
MARGARET LEE MULLICAN
Norfolk, Va.

Astro
Averett College 1, 2; Y.W.A. 1, 2; Delta Sigma Alpha 1, 2; Home Economics Club 1, 2; Nemo, Choral Club 1, 2; Meredith College 3, 4; Education Club 3, 4; Sociology Club 3; Chorus 3, 4; Y.W.A. 3, 4.

Public School Music



MORTON
MULLICAN



MUNFORD
MUNOZ

MARGARET MUNFORD
Durham, N. C.

Astro
Duke University, 1, 2; Mrs. Club, Education Club.

Education

INA GRESHAM MURRELL
Chinquapin, N. C.

Astro
Freeman Religion Club 1, 2; Folk Dance 3; Education Club 3, 4, Treasurer 4.

Education

FLOR de MARIÁ MUNOZ

Sociology
Our Lady of the Lake College 1, 2; Confraternity of Christian Doctrine 1, 2; Sodality of Our Lady 1, 2; Meredith College 3, 4; Sociology Club 3, 4; Education Club 3, 4; International Relations Club 3, 4; Sigma Pi Alpha 3, 4; Spanish Club 3, 4.

Sociology

SARAH JANE NEWBERN
Ahoskie, N. C.

Astro
A.A. Board 4; *Twig* 3; Counsellor 2, 3; Colton English Club 2; Barber Science Club 2, 3, 4, Vice-President 3, President 4; Education Club 3, 4; Dean's List.

Biology

MURRELL
NEWBERN

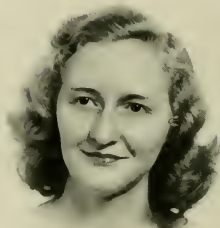


The Class of 1951

NEWTON
NICHOLS



NORMAN
NORWOOD



DIANE NEWTON
New York, N. Y.

Astro
Art Editor of *Acorn* 4; Assistant Hall Proctor 3, 4;
Alpha Rho Tau 1, 2, 3, 4; Little Theatre 3, 4; Alpha
Psi Omega President 4; Hoof Print Club 1, 2.

Art

MARTHA JEAN NORMAN
Cherry Lane, N. C.

Phi
Mars Hill College 1, 2; Meredith College 3, 4; Bee
Hive Manager 3; Canaday Math Club 3, Reporter 4;
Barber Science Club 4; Education Club 4; Y.W.A. 4.

Mathematics

DAPHNE FAYE NICHOLS
Wilmington, N. C.

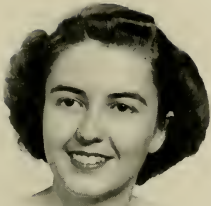
Phi
B.S.U. 3, 4, 3rd Vice-President 3, 2nd Vice-President
4; Freeman Religion Club 1, 2, 3, 4; Y.W.A. 1, 2, 3, 4;
Choir 1, 2; Sociology Club 2; Glee Club 3; Monogram
Club 3, 4; Basketball Varsity 1, 2, 3, 4; Softball Varsity
1, 2; Hockey Varsity 2, 3, 4; Chorus 4.

Religion

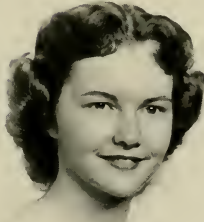
HELEN BREWER NORWOOD
Raleigh, N. C.

Astro
Freeman Religion Club 1; Tomorrow's Business
Women's Club 3, 4; "Mrs." Club 4; Y.W.A. 1, 2.

Business



OLIVE
C. PARKER



J. PARKER
PEARSON

JEAN OLIVE
Southern Pines, N. C.

JULIA VERNON PARKER
Norfolk, Va.

Astro
Granddaughters' Club 1, 2; McDowell Music Club 1, 2, 3, 4; Vice-President 3, 4; Vocal Ensemble 2, 3; Choir 2, 3, 4; President 4; Glee Club 2, 3, Librarian 3; Sigma Alpha Iota 2, 3, 4; Secretary 3, 4; Madrigal Group 4; Kappa Nu Sigma; Dean's List.

Astro
B.S.U. Council 4; Y.W.A. 1, 2, 3, 4; Hall Leader 1, Devotional Leader 2, Community Missions Chairman 3, President 4; Junior Class Treasurer; Freeman Religion Club 1, 2, 3, 4; Treasurer 3; Sociology Club 2, 3, 4; Folk Dance Club 2, 3, 4; Choir 2, 3; Silver Shield 4.

CAROL ROUSSEAU PARKER
Winston-Salem, N. C.

BARBARA BRIGHT PEARSON
Elizabeth City, N. C.

Astro
Vice-President 4; Y.W.A. 1, 2; Sigma Pi Alpha 2, 3, 4; Freeman Religion Club 1, 2; Education Club 3, 4.

Phi
A.A. Board 4; Counsellor 4; Granddaughters' Club 1, 2, 3, 4; Folk Dance Club 2, 3, 4; Barber Science Club 2, 3, 4; Education Club 3, 4.

The Class of 1951

ELLEN PEELER

Belwood, N. C.

Astro

Granddaughters' Club 1, 2, 3, 4; Barber Science Club 1, 2, 3, 4, Vice-President 4; Folk Dance Club 2, 3, 4; Canaday Math Club 2, 3; Psi Chi Club 4; Dean's List.

Biology



BETTY PENNY

Laurinburg, N. C.

Astro

S.G. Council 3, 4; House Council 2, 3, 4; Y.W.A. 1, 2, 3, 4; International Relations Clubs 3, 4, President 4; Student League of Women Voters 3, 4; Sociology Club 3, 4; Little Theatre 4; Alpha Kappa Delta 4; Student Legislature 4; White House Conference on Children and Youth; Dean's List.

History

JAMIE LEE PERRY

Yanceyville, N. C.

Phi

Home Economics Club 1, 2, 3, 4, Vice-President 4; Y.W.A. 1, 4; Education Club Social Chairman 4.

Home Economics



DOROTHY GLYNN PHILLIPS

Cary, N. C.

Phi

Peace College 1; Meredith College 2, 3, 4; Tomorrow's Business Women's Club 4; Alpha Rho Tau 4.

Business



PEELER
PENNY

PERRY
D. PHILLIPS

Meredith College



SARAH KATHERINE PHILLIPS

Gastonia, N. C.

Phi

Religion

Mars Hill 1, 2; Meredith College 3, 4; Colton English Club 3; Religious Emphasis Week Committee 3; Alpha Psi Omega 3, 4; Little Theatre 3, 4; Freeman Religion Club 4; Student League of Women Voters 4; Nominating Committee 4.

JOANNA CATHERINE PITTARD

Oxford, N. C.

Phi

Biology

OAK LEAVES Staff 4; Glee Club 1, 2, 3; Choir 1, 2; Committee of 100 3; Y.W.A. 1, 2, 3, 4; Barber Science Club 2, 3, 4; Education Club 2, 3, 4; Psi Chi Club 4; House Council 4; Dean's List.

LURENE RANSONE

Enfield, N. C.

Phi

Business

Mars Hill 1, 2; Dramatecs 1, 2; Nonparcil Literary Society 1, 2; Volunteers for Christ 1, 2; B.T.U. Officer; Delta Psi Omega 1, 2; Meredith College 3, 4; Acorn Staff 4; Tomorrow's Business Women's Club 3, 4; Education Club 4; Delta Psi Omega 4.

EMILY JANE REID

Asheville, N. C.

Astro

History

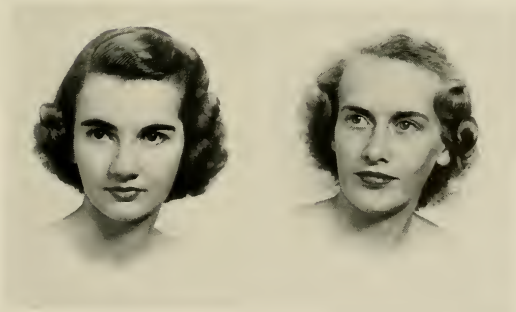
Education Club 3; Folk Dance Club 3, 4; I.R.C. 3, 4; Student League of Women Voters 3, 4; Barber Science Club 3, 4.

S. PHILLIPS

PITTARD

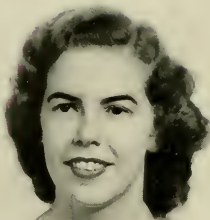
RANSONE

REID

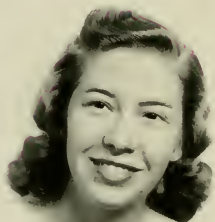


The Class of 1951

RICE
RODWELL



ROGERS
ROSSER



JULIA REBECCA RICE
Hillsboro, N. C.

Phi
Mars Hill College 1, 2; Meredith College 3, 4; Folk
Dance Club 3; Education Club 3, 4; McDowell Music
Club 4.

Primary Education

MARY PRYOR RODWELL
Norlina, N. C.

Astro
Freshman Counsellor 2; Y.W.A. 1; Freeman Religion
Club 2; Tomorrow's Business Women's Club 2, 3, 4;
Education Club 3, 4.

Business

BETTY LOU ROGERS
Durham, N. C.

Phi
Y.W.A. 1, 2, 3, 4, Hall President, Hall Vice-President,
Hall Secretary; Sunday School Officer 3, 4; Home
Economics Club 1, 2, 3, 4, Social Chairman 3, State
Home Economics Club President 4; *Twig* Staff 3; I.R.C.
3; Education Club 4.

Home Economics

MARILYN BURNS ROSSER
Sanford, N. C.

Phi
Greensboro College 1, 2; Student Council 1, 2; Y.W.C.A.
Cabinet 1, 2; Irving Society Marshal 2; House President
2; Religion Club 1, 2; I.R.C. 1, 2; Home Economics
Club 1, 2; Meredith College 3, 4; "Mrs." Club Presi-
dent 4; Education Club 3, 4.

Education



SAUNDERS
SAWYER

ELAINE APPLE SAUNDERS
Reidsville, N. C.

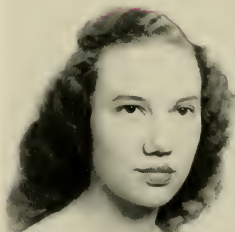
Astro
B.S.U. Sophomore Arrangements Chairman, Junior Sunday School Representative, Senior Devotional Vice-President; Home Economics Club 1, 2, 3, Secretary 4; Freeman Religion Club 1, 2, 3, 4, Social Chairman 4; Education Club 3, 4, Reporter; Y.W.A. 1, 2, 3, 4, Circle Leader 1; Folk Dance Club 2, 3, 4; Dean's List.

Religion

CORA LEE SAWYER
Norfolk, Virginia

Astro
A.A. Board, Archery Manager 2, 3; French Club President 4; Sigma Pi Alpha 1, 2, 3, 4; Hoof Print Club 2.

French



JEWEL EUVA SENTELLE
Etowah, N. C.

Phi
Brevard College 1, 2; *Clarion* Staff 2; Day Students' Club 1, 2, Secretary 1; Sigma Phi Alpha 1, 2; Meredith College 3, 4; *Twig* Staff 4; Y.W.A. 3, 4, Program Chairman 4; Freeman Religion Club 3, 4.

Religion

MARY JUNE SHORT
Florence, S. C.

Astro
Hoof Print Club 1, 2; Psi Chi Club 3, 4, Vice-President 4; Little Theatre Pledge; Class Cheerleader 3, 4; Astro Marshal 3; Colton English Club 3, 4; Superlative.

Psychology



The Class of 1951

SHULER
B. SMITH



BETTY JEAN SHULER
Bowman, S. C.

Astro
A.A. Board 3, 4; Education Club 2, 3, 4; Student League of Women Voters 3; I.R.C. 4; Monogram Club 2, 3, 4; President 3, 4; Hockey Varsity 1, 2, 3; Soccer Varsity 1; Basketball Varsity 1, 3, 4; Superlative.

Education



MARGUERITE SMITH
Fairmont, N. C.

Phi
Averett College 1, 2; Student Council 1, 2; Vice-President of Beta Phi Kappa; Basketball Manager; Superlative; May Queen; Meredith College 3, 4; Phi Marshal 4; Sociology Club 3, 4, Secretary 4; Psi Chi Club 3, 4; May Court 3, 4.

Sociology

BILLIE EVELYN SMITH
Pilot Mountain, N. C.

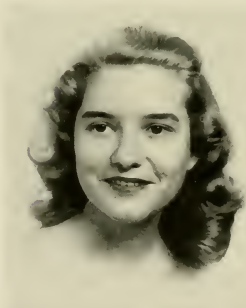
Astro
A.A. Board 4; Astro Marshal 4; Home Economics Club 4; Education Club 3, 4; I.R.C. 2, 3, 4, Program Chairman 4; Student League of Women Voters 2, 3, 4, Publicity Chairman 3, Secretary-Treasurer 4.

History

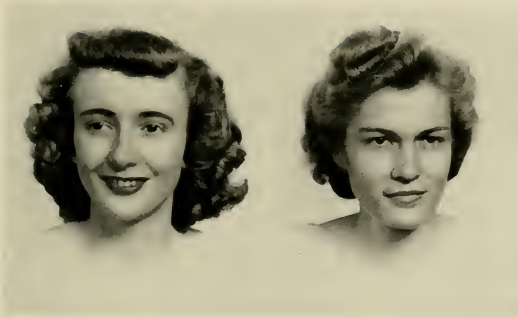
MARTHA SUE SMITH
New Hill, N. C.

Astro
Twig 2, 3, 4; S.G. 3; OAK LEAVES Staff 4; Astro Treasurer 4; Freeman Religion Club 1, 2; Glee Club 1, 2, 3; Religion Emphasis Planning Committee 2; Y.W.A. 2, 4, Hall Leader 2, Devotional Chairman 4; Folk Dance 4.

Primary Education



M. SMITH
M. S. SMITH



STANLEY
STEVENS

CRYSTAL STANLEY
Ash, N. C.

Astro
Mars Hill College 1, 2; Meredith College 3, 4; Y.W.A.
3, 4; Education Club 3, 4.

Education

MARTHA ELLEN STOUGH
Raleigh, N. C.

Phi
OAK LEAVES 2; Sigma Pi Alpha 1, 2, 3, 4; Canaday
Mathematics Club 2, 3, 4, Vice-President 4; Kappa
Nu Sigma Treasurer 4; Dean's List.

Mathematics

ANNIE REBECCA STEVENS
Raleigh, N. C.

Phi
Radio Club 1; Education Club 4.

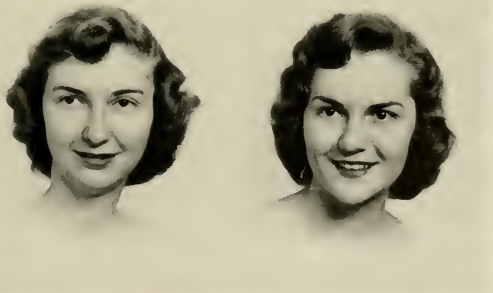
Education

LUCY JANE STROUP
Cherryville, N. C.

Phi
Voice and Public School Music
Folk Dance 3, 4; McDowell Music Club 1, 2, 3, 4;
Education Club 4; Glee Club 2, 3; Choir 2, 3; Chorus
4; Group of Nine 2, 4; Madrigal Group 4.

Voice and Public School Music

STOUGH
STROUP



The Class of 1951



SWANN
G. TAYLOR



JEAN VALETTE TAYLOR
Union, Kentucky



J. TAYLOR
THORNTON



PEGGY LUCILLE THORNTON
Florence, S. C.

MARGARET BROWNING SWANN
Madison, N. C.

Astro
Sophomore Class Treasurer; McDowell Music Club 1, 2, 3, 4, Secretary-Treasurer 3, 4; Y.W.A. 1, 2; Choir 2, 4; Sigma Alpha Iota 3, 4, Education Club 4.

Piano

Astro

S.G. 4; *Twig* Staff 4; A.A. Board 3; Counsellor 3; Astro Treasurer 3; Sigma Pi Alpha 1; I.R.C. 3, 4, Program Chairman 3; Education Club 3, 4; Student League of Women Voters 4; Kappa Nu Sigma 4; Dean's List.

History

GERTRUDE BLAYLOCK TAYLOR
Angier, N. C.

Phi
Mars Hill 1, 2; International Relations Club 2; Scribblers Club 2; Debating Team 1, 2; Nonpareil Literary Society 1, 2; Meredith College 3, 4; Education Club 3, 4; "Mrs." Club 3, 4.

Education

Astro

A.A. Board 3; *Acorn* Staff 3; Tomorrow's Business Women's Club 2, 3, 4, Treasurer 3, Vice-President 4; Monogram Club 4; Basketball 2, 3, 4.

Business



TODD
TOLAN

TOLSON
TROTT

BARBARA ANN TODD
Raleigh, N. C.

Astro
S.G. Council 4; Freshman Counsellor 4; 3rd Vice-President of Day Students 4; *Acorn* Staff 1, 2, 3, Business Manager 3; Colton English Club 2; Tomorrow's Business Women's Club 3, 4; Dean's List.

Business

BETTIE HILL TOLSON
Henderson, N. C.

Phi
W.C.U.N.C. 1; Meredith College 2, 3, 4; Education Club 4.

Education

MARJORIE AVON TOLAN
Belhaven, N. C.

Phi
A.A. Board, College Health Chairman 4; Student League of Women Voters 2, 3; Folk Dance Club 2, 3, 4; Education Club 3, 4, Secretary 4; I.R.C. 4.

Primary Education

VELMA DAWN TROTT
Richlands, N. C.

Phi
Mars Hill 1, 2; Meredith College 3, 4; Y.W.A. 3, 4, Circle Leader 3; General Officer 4; Freeman Religion Club 3, 4; Sociology Club 3; B.S.U. Devotional Chairman 4; B.T.U. Assistant Director at Pullen Church 4.

Religion

The Class of 1951

MARY JANE UTLEY
Greer, S. C.

Astro
S.G. Council 4; *Twig* Staff 3; Freshman Counsellor 3;
Freeman Religion Club 1; Y.W.A. Circle Leader 2;
Folk Dance Club 2, 3; Sociology Club 2, 3, 4, President
4; Choir 3; Psi Chi Club 3, 4; Alpha Kappa Delta 3, 4.

Sociology



ROSALYN CELESTE VARN
Walterboro, S. C.

Astro
A.A. Board 4; Y.W.A. 1, 2; College Choir 1, 2, 3;
Alpha Rho Tau 1, 2, 3, 4; Education Club 4.

Art



LOUISE AVERY WADE
Dunn, N. C.

Astro
Greensboro College 1, 2; Emerson Society 1, 2; Hall
Counsellor 1; Glee Club 1; *Collegian* Staff 2; I.R.C. 2;
Spanish Club 1, 2; Meredith College 3, 4; Education
Club 3, 4; Tomorrow's Business Women's Club 3, 4,
Reporter 4; Little Theatre Pledge 4.

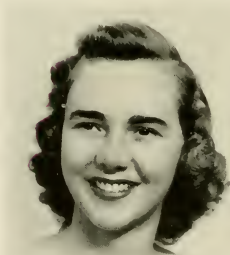
Business



VIRGINIA PENN WALDROP
Raleigh, N. C.

Astro
Randolf-Macon 1, 2; Glee Club 1, 2; Y.W.C.A. 1, 2;
Kappa Delta Sorority 1, 2; Meredith College 3, 4;
I.R.C. 3, 4, Librarian 4; German Club 4, Secretary-
Treasurer 4.

History



UTLEY
VARN



WADE
WALDROP

Meredith College



HELEN ELAINE WALKER

Sparta, N. C.

Phi

Sociology

S.G. Council 3; Bee Hive Manager 4; *Acorn* Staff, Assistant Business Manager 3, 4; Little Theatre Pledge 1; Freeman Religion Club 1, 2; Sociology Club 2, 3, 4; Secretary 2; Education Club 4; Y.W.A. 1, 2, 3, 4; Devotional Leader 1, Hall Program Chairman 4; Choir 2, Secretary 3; Glee Club 3; Chorus 4; B.T.U. Officer 2, 3, 4.

NANCY DRUMMOND WALKER

Hendersonville, N. C.

Phi

English

Twig Reporter 1, 2, Managing Editor 3, Editor 4; *Acorn* Class Editor 3; Class Vice-President 3; Glee Club 1; Sigma Pi Alpha 2, 3, 4; Treasurer 2; Colton English Club 3, 4; Folk Dance Club 3, 4; Little Theatre 4; Kappa Nu Sigma 4; Silver Shield 4; Superlative; *Who's Who Among Students in American Universities and Colleges*.



DONNA LOUISE WALSTON

Barberton, Ohio

Phi

Art

A.A. Board 2, 3, Publicity Chairman 2, 3; *Acorn* 4, Associate Editor; OAK LEAVES 3, Art Editor; *Twig* 2; Vice-President of Senior Class; Freeman Religion Club 1; Alpha Rho Tau 3, 4; Superlative; Dean's List.

BETTY ANN HALL WILKINSON

Raleigh, N. C.

Astro

Sociology

Twig 1; OAK LEAVES 1, 2, 3, 4, Business Manager 3; Freeman Religion Club 1; Y.W.A. 1, 2, Program Chairman 2; Sociology Club 2, 3, 4; Psi Chi Club 3, 4; "Mrs." Club 4.

H. WALKER

N. WALKER

WALSTON

WILKINSON



The Class of 1951

E. WILSON
M. WILSON



WINN
WINSTON



EVELYN CLYDE WILSON
Raleigh, N. C.

Phi
B.S.U. Council 3, 4; B.T.U. Director 3, Publicity Editor 4; Freeman Religion Club 2, 3, 4; Y.W.A. 1, 2, 3, Circle Secretary 2, Circle Leader 2, 3; Religious Focus Week Committee 1, 2, 3, 4; Folk Dance Club 2, 3, 4; Sociology Club 2; Kappa Nu Sigma 4; Dean's List; Silver Shield 4.

Religion

MARY JOANNA WILSON
Raleigh, N. C.

Astro
Stratford College 1; Meredith 2, 3, 4; Education Club 3; Alpha Psi Omega 4, Secretary-Treasurer 4.

Education



MARCELLA ANN WINN
Martinsville, Va.

Phi
Bluefield Junior College 1, 2; Choir 1; Basketball 1, 2; Y.W.C.A. 1, 2, President 1; B.S.U. Council 1, 2, President 2; May Court 2; Meredith College 3, 4; Y.W.A. 3, 4, Secretary 4; Freeman Religion Club 3, 4.

Religion

MARION WINSTON
Stovall, N. C.

Astro
Sigma Alpha Iota 2, 3, 4; McDowell Music Club 1, 2, 3, Vice-President 4; Choir 2, 3, Summer School 2, 3; Education Club 4; Superlative.

Piano



WONG
WRIGHT

THERESA JUNLIN WONG
Hong Kong, China

Astro

Sociology

Aurora College 1, 2; Lingnan University 3; Meredith College 3, 4; Sociology Club 4; Sigma Phi Alpha 4; Education Club 4; Superlative.

MARY BAITTY WRIGHT
Greensboro, N. C.

Phi

English

Colton English Club 3, 4; Education Club 3, 4.

YATES

BETTIE KAY YATES
Rockingham, N. C.

Phi

History

A.A. Board 3, 4, College Health Chairman 3, Social Chairman 4; Phi Society Marshal 3, Chief Marshal 4; Student League of Women Voters 1, 2, 3, Secretary-Treasurer 3, Vice-President 4; Monogram Club 1, 2, 3, 4; Hockey Varsity 1, 2, 3, 4; May Court 2; Sunday School Officer 2, 4; B.T.U. Officer 2, 3.





Junior Class

Just think—now that exams are over, we're Seniors! And what a wonderful Junior year we had to lead up to this exalted state!

It all began with lots of the Juniors returning to school early to lead freshmen and transfers around our bewildering campus. Thank goodness for the transfers, who really were needed to fill our sadly depleted ranks. We finally realized the thrill of being big sisters instead of little sisters, and our little sisters found out how we felt at our annual Big-Little Sister party in February.

We managed to survive the excitement of Palio in the fall and Stunt in the spring. And in the spring we wended our way through the court to the Junior-Senior Banquet instead of hanging out the windows to ooh and ah at the evening dresses as in previous years.

Now at the close of our Junior year, we look back with pride to our achievements, and with hope for even greater things we look forward to our Senior year.



BARBARA BONE
President



President, Barbara Bone; Vice-President, Jane Slate; Secretary, Mary Evelyn Brown; Treasurer, Carlene Kinlaw; Adviser, Miss Sarah Lemmon.

Junior Class

LYNETTE ADCOCK, Oxford, N. C. *Phi*

DORIE ANN ATKINS, Raleigh, N. C. *Astro*

RACHEL AUSLEY, Portsmouth, Va. *Phi*

BARBARA BALLENGER, Raleigh, N. C. *Astro*

CAROLYN BALLENTINE, Fayetteville, N. C. *Astro*

HILDA ROSE BECK, Salisbury, N. C. *Phi*

BETSY RUTH BOLLING, High Point, N. C. *Phi*

BARBARA CECILE BONE, Nashville, N. C. *Phi*

EMILY PARKER BOONE, Jackson, N. C. *Phi*

NELLIE MARIE BOSTIC, Cliffside, N. C. *Phi*





MOLLY BRITT, Fairmont, N. C. *Phi*

ALLENE BROWN, Asheboro, N. C. *Phi*

MARY EVELYN BROWN, Wallace, N. C. *Phi*

POLLY SUE BUNN, Emporia, Va. *Astro*

FRANCES CARLTON, Kinston, N. C. *Phi*

EMILY BURDEN CASTELLOE, Aulander, N. C. *Astro*

ALICE CHAMPION, Raleigh, N. C. *Astro*

NANCY ANN CHEEK, Chapel Hill, N. C. *Phi*

CAROLINE CHILDRESS, Raleigh, N. C. *Astro*

KATHLEEN CHRISCOE, Asheboro, N. C. *Astro*



SALLY SUE CLARK, Mount Holly, N. C. *Phi*

ELIZABETH ANN COOPER, Raleigh, N. C. *Astro*

BARBARA JEAN COX, Galax, Va. *Phi*

KATHRYN ANNE CREECH, Four Oaks, N. C. *Phi*

BARBARA ORR DANIEL, Raleigh, N. C. *Astro*

BOBBIE DAVENPORT, Alexandria, Va. *Astro*

BERNICE DAY, Murfreesboro, N. C. *Astro*

JANIE DILLARD, Marion, Va. *Astro*

MARIE LOUISE EDWARDS, Portsmouth, Va. *Phi*

ASHA FARRIOR, Wallace, N. C. *Phi*

Junior Class

DOROTHY FISHER, Charlotte, N. C. *Phi*

SUE FITZGERALD, Gretna, Va. *Phi*

MARY FAITH FRYE, Orlando, Fla. *Astro*

MARTHA ANN GARBER, Hampton, Va. *Phi*

JAN GARDNER, Durham, N. C. *Astro*

MARY RUTH GODFREY, Statesville, N. C. *Phi*

LOU MERLE GRIFFIN, Albemarle, N. C. *Phi*

BARBARA ETHEL HALE, Waynesville, N. C. *Phi*

ELAINE HANCOCK, Siler City, N. C. *Astro*

DOROTHY GREY HART, Salemburg, N. C. *Phi*



Junior Class

MARY EVELYN HENSLEY, Bufilesville, N. C. *Phi*

MARTHA HOLLAND, Caroleen, N. C. *Phi*

ANNE HOLLIS, Laurinburg, N. C. *Astro*

VEIMA ELIZABETH HOLT, Princeton, N. C. *Phi*

LOUISE HORN, Shelby, N. C. *Astro*

JEAN CAUSEY JOHNSON, Four Oaks, N. C. *Phi*

JEANNETTE WHITFIELD JOYNER, Asheville, N. C. *Phi*

FRANCENE KING, South Norfolk, Va. *Astro*

LEATRICE ELIZABETH KING, Richlands, N. C. *Phi*

MARY JANE KING, Nashville, N. C. *Phi*





CARLENE KINLAW, Lumberton, N. C. *Phi*

LUCILLE KINSLAND, Franklin, N. C. *Phi*

EVELYN KRAUSE, Union Mills, N. C. *Phi*

HELEN ANN LEATHERWOOD, Bryson City, N. C. *Phi*

LUCYANN LIDDY, Washington, D. C. *Phi*

JANE LUTHER, Raleigh, N. C. *Astro*

JEAN MASON, Newport, N. C. *Phi*

SALLY MASSEY, Raleigh, N. C. *Phi*

DOTT MILLER, Ahoskie, N. C. *Astro*

JEAN MILLER, Burlington, N. C. *Phi*



ALICE MILTON, Hopewell, Va. *Phi*

DRULYNN MORGAN, Spring Hope, N. C. *Phi*

BARBARA MORRIS, Durham, N. C. *Astro*

ZETA ELIZABETH MORTON, Jacksonville, N. C. *Phi*

JANE WEBB MURPHY, Asheville, N. C. *Phi*

NORMA LEE MURRAY, Burgaw, N. C. *Phi*

JOAN NEIGHBORS, Benson, N. C. *Phi*

ELIZABETH OSBORNE, Halifax, Va. *Phi*

MARY ANN PALMER, Jacksonville, Fla. *Phi*

HONORE MAYME PARKER, Raleigh, N. C. *Astro*

Junior Class

PEGGY JEANNE POOLE, Clayton, N. C. *Astro*

ROSALYN LUCILLE POOLE, Dunn, N. C. *Astro*

GRACE POW, Cramerton, N. C. *Phi*

JULIA PRESSON, Charlotte, N. C. *Phi*

VIRGINIA RUTH PRICE, Clifton, N. C. *Phi*

LOIS ODELL PRITCHETT, Fredericksburg, Va. *Phi*

ALICE JEANNE RAMSEY, Kinston, N. C. *Phi*

MARY ALICE RANDALL, Spartanburg, S. C. *Astro*

IRMA RAY, Raeford, N. C. *Phi*

ANNE KATHERINE REAGAN, Asheville, N. C. *Phi*



Junior Class

LANE ROBERSON, Washington, N. C. *Astro*

MARTHA SUZANNE ROBINSON, Fayetteville, N. C. *Astro*

LYDIA VIRGINIA RODWELL, Charlotte, N. C. *Phi*

MATEL ROYAL, Roseboro, N. C. *Phi*

BARBARA CAROL SCETTLE, Morristown, Tenn. *Astro*

MARY JO SHAW, Raleigh, N. C. *Astro*

BETTY LU FERNE SHIELDS, Raleigh, N. C. *Astro*

RUTH ANN SIMMONS, Martinsville, Va. *Phi*

MILDRED WALLACE SIMPSON, Beaufort, N. C. *Phi*

KATHERINE SITES, Hickory, N. C. *Phi*





BETTY JANE SLATE, Burlington, N. C. *Phi*

BETTY JO SMITH, High Point, N. C. *Phi*

JANET HAZEL SMITH, Windsor, Conn. *Astro*

BETTY SUE SPENCE, Lillington, N. C. *Phi*

METTA MAE SPENCE, Overhills, N. C. *Astro*

PATSY SPIERS, Tarboro, N. C. *Phi*

BARBARA ELAINE STALLINGS, Louisburg, N. C. *Phi*

MARTHA STALLINGS, Winston-Salem, N. C. *Phi*

LOUISE STEWART, Hamilton, N. C. *Phi*

JANET TATUM, Cooleemee, N. C. *Phi*



LIB TAYLOR, Chocowinity, N. C. *Astro*

DOROTHY ELIZABETH THOMAS, Leaksville, N. C. *Phi*

MARY ANN WESTBROOK, Dunn, N. C. *Astro*

ANGERLANE WHITFIELD, Rocky Mount, N. C. *Astro*

ELSIE WICKER, Sanford, N. C. *Astro*

ELSIE WILLIAMS, Fredericksburg, Va. *Phi*

Sophomore Class Officers

Onward we march along our way as the class of '53. We, the Sophomore Class, had our hand in Orientation Week guiding the freshmen; we worked together in Corn Huskin Bee, in Stunt, and again during Palio as the "enlightened" bugs. Christmas caroling and after-midnight parties helped usher in the holidays, and the exams come to end half of our year. With the arrival of spring, we sent our beauties to the May Court and watched the Japanese cherry trees blossom. Then signs of summer and month of June with graduation for our big sisters arrived.



JANET STALLINGS
President



Janet Stallings, President; Doril Williams, Vice-President; Ann Seagrove, Secretary; Patricia Pendercraft, Treasurer.

Sophomore Class

Allred, Betty Jean, South Boston, Va.;
 Archer, Mary Alice, Franklin, N. C.; Autrey,
 Verla Grace, Stedman, N. C.; Barbehenn,
 Katherine Anna, Plainfield, N. J.

Baucom, Ann Elizabeth, Wilmington, N. C.;
 Benner, Glyndora, Carthage, N. C.; Bla-
 lock, Olive Grace, Kinston, N. C.; Bonni-
 ville, Susan Patricia, Norfolk, Va.

Bowden, Penina Slaven, Kinston, N. C.;
 Bradley, Edith Josephine, Scotland Neck,
 N. C.; Brady, Erina Carolyn, Raleigh, N. C.;
 Brigman, Alma Olivia, Raleigh, N. C.

Brigman, Dorothy Evelyn, Rowland, N. C.;
 Brown, Dorothy Dora, Winston-Salem, N. C.;
 Brown, Ethel Joyce, Elizabeth City, N. C.;
 Brown, Martha O'Neil, Shelby, N. C.

Bruton, Ann, Mount Gilead, N. C.; Buening,
 Adele Anne, Charlotte, N. C.; Bumgarner,
 Mary Elizabeth, Goldsboro, N. C.; Can-
 nady, Elizabeth Anne, Richlands, N. C.

Cannady, Melrose, Bunnlevel, N. C.; Carter,
 Jeanne Bailey, Kinston, N. C.; Casey, Mary
 Ann, North Wilkesboro, N. C.; Casstevens,
 Helen Beth, Shelby, N. C.

Cate, Martha Jane, Chapel Hill, N. C.;
 Caudle, Sarah Louise, Aberdeen, N. C.;
 Cliatt, Shirley Elizabeth, Myrtle Beach, S. C.;
 Cole, Mary Joe, Whiteville, N. C.



Sophomore Class



Cole, Ruth Jeannette, Fayetteville, N. C.; Covington, Joyce Kathryn, Rockingham, N. C.; Coxe, Sarah, Wagram, N. C.; Craven, Ruth McKenzie, Charlotte, N. C.

Currin, Mary Rose, Oxford, N. C.; Dawson, Beverly Janne, Charlotte, N. C.; Dickinson, Helen Frances, Ulah, N. C.; Dula, Jean Bradley, Kipling, N. C.

Dula, Patricia Dean, Durham, N. C.; Eacho, Barbara Ann, Raleigh, N. C.; Edge, Mary Rebecca, Aberdeen, N. C.; Estes, Mary Berry, Chase City, Va.

Faucette, Elizabeth Kendrick, Durham, N. C.; Finklea, Betty Jean, Pamlico, S. C.; Fisher, Johnny Mae, Concord, N. C.; Fisher, Mary Ida, Concord, N. C.

Francis, Bessie Sue, Waynesville, N. C.; Garnett, Lillian Inez, Lake Worth, Fla.; Godwin, Mary Ann, Ahoskie, N. C.; Hamrick, Elizabeth Ann, Shelby, N. C.

Hart, Allen Wilkinson, Waynesville, N. C.; Henry, Eleanor Minerva, Hendersonville, N. C.; Henson, Helen Carthage, Carthage, N. C.; Heonis, Mary Alice, Raleigh, N. C.

Highsmith, Betty Ann, Jacksonville, N. C.; Hooks, Carroll Lynette, Fremont, N. C.; Hoots, Rebecca Anne, Raleigh, N. C.; Horton, Mary Ann, Fountain, N. C.

Sophomore Class

House, Nancy Elizabeth, Asheboro, N. C.;
Howard, Holly L., Winston-Salem, N. C.;
Hunt, Rose Marilyn, Forest City, N. C.;
Ipoeh, Juanita Florence, Ernul, N. C.



James, Virginia Catherine, Waynesville,
N. C.; King, Evelyn Cole, Seagrove, N. C.;
Kistler, Nancy Lee, Charlotte, N. C.; Lan-
caster, Frances Ann, Rocky Mount, N. C.



Langley, Joan Gordon, Lynchburg, Va.;
Langston, Frances Jane, Four Oaks, N. C.;
La Rue, Jo Anne, Raleigh, N. C.; Latham,
Jane Marie, Garner, N. C.



Leonard, Jean Ellen, Raleigh, N. C.; Leop-
ard, Jeannette Alice, Waynesville, N. C.;
McGowan, Kathleen Dameron, Faison,
N. C.; McGugan, Louise Annette, Cordele,
Ga.



McLamb, Doris Jean, Benson, N. C.; Mad-
drey, Emma Jean, Seaboard, N. C.; Mas-
singill, Peggy Ann, Benson, N. C.; Melvin,
Sally McKay, Fayetteville, N. C.



Midyette, Beulah Anne, Kinston, N. C.;
Millican, Shelley Hart, Roxboro, N. C.;
Mizelle, Billie Louise, Charlotte, N. C.;
Moore, Judy Pamela, Charlotte, N. C.



Moore, Mary Constance, Myrtle Beach,
S. C.; Nottingham, Phyllis, Exmore, Va.;
O'Quinn, Anne Howe, Lillington, N. C.;
Partin, Virginia Ann, Chadbourn, N. C.



Sophomore Class

Betts, Lillian Vann, Ivor, Va; Pendergraft, Patricia Ann, Waynesboro, Va.; Perry, Doris Marie, Elizabeth City, N. C.; Pleasants, Helen Jane, Angier, N. C.

Poster, Mary Elizabeth, Wilmington, N. C.; Rogers, Mary Jane, Nichols, N. C.; Royer May Elyn, Bishopville, S. C.; Seagrove, Ann Daughy, Clinton, N. C.

Shields, Betty Lou, Scotland Neck, N. C.; Smathers, Patricia Karyne, Canton, N. C.; Smith, Irma Louise, Fremont, N. C.; Smith, Sarah Lee, Whitakers, N. C.

Smith, Sara Lynn, Asheville, N. C.; Stainback, Doris Ann, Henderson, N. C.; Stallings, Beulah Venetia, Jamesville, N. C.; Stallings, Elma Janet, Fayetteville, N. C.

Stanfield, Mary Katheryn, Nashville, N. C.; Stell, Dorothy Wiggins, Wake Forest, N. C.; Stephenson, Daphne, Raleigh, N. C.; Stone, Marjorie Ann, Morehead City, N. C.

Stough, Shirley, Raleigh, N. C.; Tate, Mary Louise, Salisbury, N. C.; Taylor, Charlotte Vance, Raleigh, N. C.; Thomas, Camille Anne, Wilmington, N. C.

Thomas, Grace, Smithfield, N. C.; Thomas, Norma Kathleen, Bryson City, N. C.; Thomas, Sarah Elizabeth, Roxboro, N. C.; Turner, Camille Anne, Raleigh, N. C.

Sophomore Class

Waller, Lois Estelle, Mount Olive, N. C.;
Webb, Lois Irvin, Morehead City, N. C.;
Welch, Betty Jo, Washington, D. C.; West,
Barbara Hill, Hendersonville, N. C.

West, Mary Jean, Waynesville, N. C.; West-
moreland, Ellen, Thomasville, N. C.; Whis-
nant, Mary Dunn, Raleigh, N. C.; White-
hurst, Annabella, Elizabeth City, N. C.

Whitty, Nela, New Bern, N. C.; Wicker,
Rebecca, Sanford, N. C.; Wiggins, Charlotte
Isabel, Dudley, N. C.; Williams, Doril
Elaine, Rocky Mount, N. C.

Williams, Meta Mae, Kinston, N. C.;
Wilson, Mary Joanna, Raleigh, N. C.;
Winslow, Harriet Ann, Scotland Neck, N. C.;
Won, Blanche Oi How, Honolulu, T.H.

Wood, Celia Jean, Troy, N. C.; Woodward,
Jo Ann, Shelby, N. C.; Wrenn, Margie Jean,
Siler City, N. C.



Freshman Class Officers

Somehow, we managed to survive our Freshman year with its exams, handbook training classes, guidance groups, Rush Week, and now at last we are veterans who know from experience how to overcome examination fears and empty mail boxes, how to manage our own washing and ironing. Through hard study and pleasant leisure hours spent with each other, we have all become close friends in this, the class of '54.

We are proud of our Meredith heritage and of the part we have played in the many activities of this past year. As friends and students we anxiously await three more years together.



ALSTINE SALTER
President



President, Alstine Salter; Vice-President, Barbara Austin; Secretary, Patsy Bland; Treasurer, Pat Tucker; Sponsor, Miss Doris Peterson.

Freshman Class

Blanche Allen Aldridge, Kinston, N. C.;
Doris Irene Allen, Smithfield, N. C.; Nancy
Miriam Allen, Cherryville, N. C.; Elizabeth
Reynolds Anglin, Winston-Salem, N. C.

Barbara Carol Austin, Winston-Salem, N. C.;
Elinor Anne Averre, San Jose, Costa Rica,
Mary Alice Bailey, Everetts, N. C.; Melba
Frances Barbour, Willow Springs, N. C.

Marjorie Anne Barnes, Smithfield, N. C.;
Nellie Ruth Barnes, Charlotte, N. C.; Pa-
tricia Bunn Bass, Raleigh, N. C.; Myra
Jean Batten, Schna, N. C.

Ann Hodge Beale, Potecasi, N. C.; Cherrie
Barnes Beddingfield, Clayton, N. C.; Sara
Ann Blalock, Lucama, N. C.; Patricia
Setzer Bland, Shelby, N. C.

Mary Lou Booker, Brookneal, Va.; Frances
Jacqueline Bowman, Hickory, N. C.; Bobbie
Glen Bridges, Caroleen, N. C.; Dorothy
Anne Briggs, Asheville, N. C.

Anne Brigman Ranzino, Raleigh, N. C.;
Joanne Weathers Brown, Fayetteville, N. C.;
Nancy Franklin Brown, Wilkesboro, N. C.;
Rebecca Jane Buchanan, Dover, Del.

Thea Ann Burges, Pinctops, N. C.; Nancy
Anne Cadieu, Rockingham, N. C.; Betty
Kathryn Carter, Reidsville, N. C.; Ruth
Moore Champion, Raleigh, N. C.

Mary Ann Chandler, Graham, N. C.; Anne
Johnson Clark, Varina, N. C.; Jane Purdy
Condrey, Enfield, N. C.; Sara Cooke, Lawnd-
dale, N. C.

Freshman Class

Virginia Brooks Corbett, Fayetteville, N. C.;
 Ada Eugenia Corn, Raleigh, N. C.; Elizabeth
 Jeannette Crenshaw, Spartanburg,
 S. C.; Luetta Jane Cutts, Stovall, N. C.

Sarah May Dale, Homeville, Va.; Peggy
 Jo Dalrymple, Raleigh, N. C.; Sally Cooper
 Dean, Louisburg, N. C.; Barbara Jean
 Dickens, Mt. Gilead, N. C.

Betty Jean Dickens, Leixngton, N. C.; Ann
 Burwell Draughon, Whitakers, N. C.; Faye
 Carol Edwards, Maxton, N. C.; Margaret
 Larue Edwards, Raleigh, N. C.

Sara Elizabeth Edwards, Savannah, Ga.;
 Mabel Elizabeth Ellington, Washington,
 N. C.; Alyce Marie Epley, Valdese, N. C.;
 Barbara Ann Eurton, Asheville, N. C.

Marian Jeanette Flowers, Knightdale, N. C.;
 Gail Hamilton Francis, Concord, N. C.;
 Anita Graham Fussell, Rose Hill, N. C.;
 Ruth Galloway, Supply, N. C.

Betty Lee Gardner, Angier, N. C.; Lou
 Ellen Gardner, Pinetops, N. C.; Fannie
 Nell Garrell, Clarendon, N. C.; Margaret
 Palmer Gillies, Arlington, Va.

Betty Lou Gladstone, Dunn, N. C.; Shirley
 Ann Graham, Windsor, N. C.; Jo Anne
 Graybeal, Creston, N. C.; Mildred Ivans
 Green, Tarboro, N. C.

George Anna Griffin, Greenville, S. C.;
 Mary Jocile Griffin, Rocky Mount, N. C.;
 Carolyn Wallace Hall, Carthage, N. C.;
 Sonnya Christine Hamilton, Walterboro,
 S. C.



Freshman Class



Grace Marie Hamme, Oxford, N. C.; Dorothy Estelle Hampton, Winston-Salem, N. C.; Betty Ann Hayes, Greenville, S. C.; Rebecca Womble Haynes, Raleigh, N. C.

Nellie Blanche Hodge, Raleigh, N. C.; Martha Neal Honeycutt, Oak Ridge, N. C.; Vera Mac Humphreys, Roanoke Rapids, N. C.; Elizabeth Irene Hunter, Cary, N. C.

Ann Ward Ipock, New Bern, N. C.; Caroline Lupo Jackson, Tabor City, N. C.; Jean Stuart Johnson, Benson, N. C.; Nancy McMillan Johnson, Tarboro, N. C.

Mildred Jean Journigan, Henderson, N. C.; Martha Anne Kennedy, Winston-Salem, N. C.; Wilhelmina Burnette Kerlee, Black Mountain, N. C.; Peggy Sherard Kirby, Raleigh, N. C.

Patricia Kirk, Southern Pines, N. C.; Doris Knott, Knightdale, N. C.; Dorothy Knott, Knightdale, N. C.; Betty Aileen Lane, Greensboro, N. C.

Marjorie Ann Lane, Selma, N. C.; Carolynn Joan Little, Concord, N. C.; Pattie Marie Loftin, Weaverville, N. C.; Ardelia Ann Lovell, Clinton, N. C.

Cora Jannette McCain, Kinston, N. C.; Kathryn Doris McMillan, Fayetteville, N. C.; Catherine Thomson McRackan, Southport, N. C.; Rebecca Douglas McRackan, Southport, N. C.

Peggy White Madry, Scotland Neck, N. C.; Nettie Margaret Messingill, Smithfield, N. C.; Jessie Melissa Matthews, Laurinburg, N. C.; Joyce May, Durham, N. C.

Freshman Class

Gertrude Meyer, Wakefield, N. Y.; Betty Ann Miller, Florence, S. C.; Shirley Gibson Mills, Fayetteville, N. C.; Patsy Mitchiner Harris, Henderson, N. C.

Anne Carol Moore, Raleigh, N. C.; Barbara Jean Moore, Raleigh, N. C.; Bonny Lynn Morgan, Benson, N. C.; Elizabeth Anne Morgan, Norfolk, Va.

Lucy Kate Morrison, Roseboro, N. C.; Jean Evonne Morton, Jacksonville, N. C.; Nancy Anne Murray, Raleigh, N. C.; Faye Neighbors, Benson, N. C.

Jacquelyn Ann Norris, Raleigh, N. C.; Lorette Hobbs Oglesby, Hamilton, N. C.; Betty Lou Olive, Apex, N. C.; Patricia Davis O'Quinn, Lillington, N. C.

Wilma Joyce Orren, Statesville, N. C.; Sue Carl Oswald, Wallace, N. C.; Mary Elizabeth Owen, Greenville, S. C.; Jean Shirley Pace, Millbrook, N. C.

Fallie Doris Page, Morrisville, N. C.; Secunda Clyde Parker, Raleigh, N. C.; Sarah Ann Pate, New Bern, N. C.; Betsy Jeanette Patterson, Burlington, N. C.

Hazel Rae Phillips, Scotland Neck, N. C.; Joanna Powell, Raleigh, N. C.; Dorothy Lucille Prickett, Burlington, N. C.; Barbara Anne Propst, Charlotte, N. C.

Doris Madeline Pulley, Ivor, Va.; Margaret Ann Quay, Harrisburg, N. C.; Julia Theresa Raynor, Ahoskie, N. C.; Mary Bryan Reid, Whitakers, N. C.



Freshman Class



Martha Alice Renfro, Wendell, N. C.;
 Jacqueline Anne Rhodes, Kinston, N. C.;
 Barbara Anne Rice, Rocky Mount, N. C.;
 Joyce Eloise Rogers, Wilmington, N. C.

Mary Rose Rummage, Albemarle, N. C.;
 Alstine Fay Salter, Bass River, Mass.;
 Betty Joyce Sanderlin, Windsor, N. C.;
 Cecelia Carolyn Sawyer, Belcross, N. C.

Jeannette Scott, Wilmington, N. C.; Jane
 Scales Seate, Wilson, N. C.; Annamarie
 Smith, East Orange, N. J.; Mary Olive
 Spivey, Wilson, N. C.

Barbara Jean Steele, High Point, N. C.;
 Mary Louise Stephens, Raleigh, N. C.;
 Margelee Stewart, Lillington, N. C.; Mary
 Brooks Stone, Shelby, N. C.

Elizabeth Louise Stuart, Goldsboro, N. C.;
 Frances Charleen Swanzey, Charlotte, N. C.;
 Betty Ann Swindell, Washington, N. C.;
 Dorothy Ann Taylor, Raleigh, N. C.

Emma Grey Teachey, Rose Hill, N. C.;
 Phyllis Lou Tribble, Richmond, Va.; Pa-
 tricia Anne Tucker, Florence, S. C.; Lois
 Winston Turpin, Hopewell, Va.

Mary Ellen Upchurch, Durham, N. C.;
 Ethel Fay Walker, Halifax, N. C.; Evelyn
 Richardson Wallace, Star, N. C.; Mary
 Jane Warrick, Smithfield, N. C.

Mary Helen Watson, Kinston, N. C.;
 Katherine Evangeline Waynick, Weldon,
 N. C.; Celia Townsend Wells, Florence,
 S. C.; Shirley West, Currituck, N. C.

Freshman Class

Barbara Dee White, Franklinton, N. C.;
Bernice White, Hobbsville, N. C.; Dorothy
Elizabeth White, Fayetteville, N. C.; Ruth-
anna White, Fayetteville, N. C.

Mary Ruth Willcox, Enfield, N. C.; Verna
Arlene Willetts, Winnabow, N. C.; Deloris
Ann Williams, Charlotte, N. C.; Gertrude
Carr Willaims, Wallace, N. C.

Jane Elizabeth Williamson, Clinton, N. C.
Margaret Wilson, Raleigh, N. C.; Clara
Quena Winzer, Emmaus, Pa.; Janis Eliz-
abeth Witherington, Vanceboro, N. C.

Lillian Elizabeth Wooten, Princeton, N. C.





A



IVITIES



Student Government Association

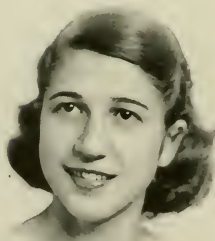
With its aim of governing the student body in a democratic manner, the Student Government Council has tried to establish an understanding among students which will help to unite them in making Meredith a college where Christianity is not only studied but also put into practice.

This year the council has attempted to build a strong bond of unity by holding open meetings where rules and their interpretations have been discussed. The honor system has been stressed by placing more emphasis on the meaning of honor in the social as well as in the academic realm. Further cooperation has been secured by thoroughly explaining legislative and election procedures.

Weekly meetings of the council have been preceded by office hours—a time when any student could present suggestions for legislative action to be discussed at the meetings. Joint meetings with the Faculty Committee on Student Government have helped to bring a better understanding of faculty viewpoints on student matters.

Another phase of the council's duties has been the promotion of a well-rounded social life among students. Activities such as the mass attendance at a Wake Forest football game, open-house in the Hut, and support at State College pep rallies have been a few of the activities.

It is the belief of the council that student government can be successful only if students recognize the importance of applying its principles to all phases of student life. With this idea in mind student government has a part in all the activities on campus—seeking to integrate them towards one ideal—more democratic, Christ-like campus living.



MARJORIE JOYNER
President

Freshman and Transfer Counsellors



HELEN BRUNSON
Chief Counsellor

"I'm going home; this homework has gotten me down."

"I'm going, too; my roommate and I just don't agree."

"Wait a few more days, girls; things will be better I promise. We will do everything in our power to straighten out your problems."

This could very easily be a conversation of a counsellor and her girls. We have striven this year to make our freshmen-transfer counselling system work on an informal personal basis. We, the counsellors, think our job has been one of the biggest jobs on the campus, but also the most gratifying one possible. Our only wish is that in return for our work we have gained the friendship of every new student.

We have during the year touched upon the subject of the Student Government at work; the traditions of Meredith; methods of study; vocational guidance; and extra curricular activities—all with the intention of acquainting the new students with some background information which is necessary for becoming the best kind of Meredith citizen.



Baptist Student Union

(Baptist Student Union Council)

- CAROLYN MASSEY *President*
 FAYE NICHOLS *1st Vice-President*
 ROSALIND KNOTT *2nd Vice-President*
 ELAINE SAUNDERS *3rd Vice-President*
 JEAN DULA *Secretary*
 SARAH COXE *Treasurer*
 JULIA PARKER *Y.W.A. President*
 BETTY JO WELCH *Sunday School Director*
 MARY EVELYN BROWN *Training Union Director*
 EVELYN WILSON *Publicity Editor*
 DOROTHY HART *Publicity Artist*
 BETTY JO SMITH *Music Chairman*
 ANN WINSLOW *Arrangements Chairman*
 MARY ANN WESTBROOK *Program Chairman*



CAROLYN MASSEY
President



B.S.U. Staff

The Baptist Student Union of Meredith College is a student Christian movement which exists for the total student body of Meredith College.

The Union has an executive council, the purpose of which is to provide opportunity for worship, study, and action as the individual student seeks to know God as revealed in Jesus Christ. Yespers and family altar provide opportunities for worship on the campus. Study groups are held all through the year. An opportunity for action comes through our mission organization, the M.W.A.

The B.S.U. works closely with the churches of Raleigh, where, in the fellowship of kindred minds, the student can find strength, direction, and encouragement to strive for the ideal life, the Christ-centered life.

This emphasis has as its basis the motivating force of this passage of Scripture:

“I am the vine, ye are the branches: He that abideth in me, and I in him, the same bringeth forth much fruit: for without me ye can do nothing. If a man abide not in me, he is cast forth as a branch, and is withered; and men gather them, and cast them into the fire, and they are burned. If ye abide in me, and my words abide in you, ye shall ask what ye will, and it shall be done unto you.”

John 15:5-7

The opportunities offered on the campus and in the churches bear “much fruit” only to the extent that they have been centered in Jesus Christ, his spirit and his purpose.



Astrotekton

Movie stars, football stars, stars in the sky, Astro stars. All these stars were seen at the "Astro Star Party," our introduction to Rush Week. We entertained the new students that night and again on two Rush Days. Competition was keen as we vied with the Phis, the Astros vigorously attempting to woo students into an attachment to the gold and white.

SONNY BURNHAM
President

The pep rally with cheerleaders, football stars, B.M.O.C.'s present from Carolina, State, Duke, and Wake Forest was a big success, as was the picnic at Allens' Pond, climaxed by the burning of a huge star across the lake to the singing of the Astrotekton song.



After the hectic activities of Rush Week, old and new Astros settled down to a more normal pace, enjoying such activities as spaghetti suppers, open house with the Phis, and square dances. We had serious moments when we discussed questions pertinent to the society, or planned for important events. However, in all our undertakings, social or business, we found in our society, friends with common interests; we found opportunities for expression of our talents; we found chances for enriching our social life; we found a new spirit of unity with the Philaretians. We have believed in our motto, and we have tried to live by it: "He builds too low who builds beneath the stars."

Philaretian

To make the societies more active and purposeful was the challenge that inspired us as Phis and guided us through the year—a year unequalled in our stay at Meredith. Rush week was hectic but fun as we invaded the freshman dormitories. Our Fashion Show formally introduced our old members to the new students. The Tuesday night skit transformed the dining hall into an entertaining supper club. With friends from State College we climaxed, at the annual bonfire, our share of rushing. Decision Day was a victory for the Phis.

Under the guidance of our challenge, many picnics, parties, and teas were scheduled. It has been fun watching the freshmen become an active part of the society. A canasta party helped us to buy new furniture for our hall—an addition much needed and appreciated.

And now that the end of another year draws near, we senior Phis must leave you, but our goal still remains. To you whom we are leaving and to the new girls who

will join you soon, we wish success. "Plain living and high thinking" will always bind together loyal Phis. And the spirit of Philaretia will be with us forever.

VIRGINIA JONES
President



Phi Marshals



ASHA FARRIOR; BETTIE YATES, *Chief Marshal*; MARGUERITE SMITH; ANNE HORTON, *not pictured*.

Astro Marshals



RUTH COLE; FRANCES ANNE ESTERIDGE, *Chief Marshal*; BILLIE SMITH; CHARLEN SWANNEY, *not pictured*.

The Oak Leaves

STAFF OF THE OAK LEAVES

BETTY JANE HEDGEPETH..... *Editor*
 BETSY AUSBON..... *Associate Editor*
 JOANNE MASON } *Photographic Editors*
 JOANNA PITTARD }
 BETTY ANN HALL..... *Senior Class Editor*
 JULIA PRESSON..... *Junior Class Editor*
 SALLY SMITH..... *Sophomore Class Editor*
 ANNE MOORE..... *Freshman Editor*
 ALICE HEONIS..... *Art Editor*

BUSINESS STAFF

JEAN MILLER..... *Business Manager*
 ROSE MARIE KILLINGER } *Senior Assistants*
 MARTHA SUE SMITH }
 JANE LUTHER } *Junior Assistants*
 DOTT MILLER }
 DORIL WILLIAMS } *Sophomore Assistants*
 ANNE MIDYETTE }



BETTY JANE HEDGEPETH, *Editor*
 JEAN MILLER, *Business Manager*





We of the 1951 OAK LEAVES staff hereby present to you our gift . . . neatly bound in maroon, printed on gleaming pages, our last and best and true and only pound of flesh.

The magnetic quality of the Publications Room has made itself known to us during this year. Realizing at last that an undetoured trip through first Jones is impossible, we have made an intimate friend of the corner filing cabinet and recognized the lyric tones to be found turning pages and resounding typewriter keys. But the Room inmates have often been known to envy the socialite half of the staff. To meet a portion of Raleigh citizenry labeled "Advertising Managers" and "Public Relations Directors" sounds blissfully like the outside world. It is. In fact, it is rumored that shreds of business staff shoe leather may be found in almost any given square inch of Raleigh sidewalk. Herein is rooted the mutual admiration existing between the editorial and business factions.

There is another point that finds unanimous agreement . . . we gratefully mention here the tireless efforts of our faculty advisers, Dr. Harris and Dr. Canaday. The energy expended in guiding another greenhorn staff through another year must be of the infinite unmeasurable variety. With the advisers, in our personal hall of fame, we place Dr. and Mrs. Cooper, whose combined efforts have produced much of this book's photography. The Superlative, Devider, Marshal, and May Queen sections are all graced by the Cooper signature and are, we feel, exceptional in technique and originality. Sharing the photography laurels with the Coopers is Lib Reid whose patience and ability are responsible for the athletic section.

To the students and faculty we commend to you this our offering in the hope that you will find here represented 1951 at Meredith.

The Twig



NANCY WALKER, *Editor*

MARTHA HARE, *Business Manager*

EDITORIAL STAFF

<i>Editor</i>	Nancy Walker
<i>Assistant Editor</i>	Beverly Batchelor
<i>Associate Editors</i>	Emma Lee Hough Pat Snathers
<i>Managing Editors</i>	Barbara Schettle Jean Taylor
<i>Art Editor</i>	Sally Clark
<i>Music Editor</i>	Jane Slate
<i>Sports Editor</i>	Joanne LaRuc
<i>Photo Editor</i>	Elsie Williams
<i>Columnists</i>	Micky Bowen Dot Helms
<i>Reporters</i> —	Doris Perry, Joan Langley, Elizabeth Hamrick, Anne O'Quinn, Phyllis Nottingham, Rosalyn Poole, Jean Wrcnn, Marie Edwards, Doris Champion, LeGrace Gupton, Allen Hart, Ann Seagrove, Betty Ann Highsmith.
<i>Chief Typist</i>	Joyce Bailey
<i>Typists</i> —	Daphne Bordeaux, Euva Sctelle, Jean Johnson, Lucyann Liddy, Kathleen Chriscoe.
<i>Faculty Sponsor</i>	Dr. Norma Rose

BUSINESS STAFF

<i>Business Manager</i>	Martha Hare
<i>Advertising Manager</i>	Barry Barefoot
<i>Circulation Manager</i>	Martha Smith Lucyann Liddy
<i>Staff</i>	Dot Thomas Jeanne Ramsey



“As the *TWIG* is bent,” so goes student opinion, and so all the happenings of the college community—from Rush Week in the fall to Commencement in the spring—are duly reported and, we hope, read and talked about. This reflection of student opinion and this chronicling of *all* campus events is, at least, the dream of the staff, who sometimes tire of chasing down stories but never tire of reading their own immortal words on the front page.

Although the editor occasionally wearied of ordering people to write letters that would not *sound* forced, editorials on pertinent subjects around the campus seemed to come easily to more and more staff members and guest writers, giving what was considered hope for the future. At any rate, after due process of editing and a few feelers sent out into the unknown in search of material to fill up space, copy continued to fill up the wire basket in the Publications Room. Grappling with dangling participles and trying to proofread without getting completely blacked with ink are, of course, not the best-paid occupations at Meredith, but every two weeks to those responsible the work seemed to have been well worth all the backbreaking hours spent toiling over the typewriter and laboriously counting inches.





DICKIE PHILLIPS, *Editor*
 EMMA LEE HOUGH, *Business Manager*

The Acorn

ACORN STAFF

- DICKIE PHILLIPS *Editor*
 DONNA WALSTON *Assistant Editor*
 DIANE NEWTON *Art Editor*
 BEVERLY BATCHELOR }
 JANET TATUM } *Class Editors*
 JULIA PRESSON }
 SALLY MELVIN }

BUSINESS STAFF

- EMMA LEE HOUGH *Business Manager*
 HELEN WALKER }
 RITA EDWARDS } *Assistant Business Managers*
 ANN O'QUINN *Circulation Manager*
 LURENE RANSONE }
 JOYCE BAILEY } *Typists*





The staff of your college literary magazine, *The Acorn*, has attempted this year, as in years past, to bring your best to you. From short stories, poems, articles, book reviews and art work, the editors have selected those most appropriate for this campus in this time. Often this process of selection has entailed the duty of door-to-door canvassing, searching for hidden talent on the campus, and urging those of proved ability to get to the typewriter and make tangible the products of their creativity. *You write The Acorn*; its success and your enjoyment of it will always depend upon your contributions.

Day Student Officers

BETSY GOLDSTON	<i>President</i>
BARBARA BALLENGER	<i>1st Vice-President</i>
JEAN TAYLOR	<i>2nd Vice-President</i>
SHIRLEY STOUGH	<i>3rd Vice-President</i>

The Day Students of Meredith College. Just the name itself brings a flood of ideas and memories. We remember the excitement of registering as freshmen, the thrill of using the new auditorium for the first time . . . there were the perpetual bridge games when we all brought out our sandwiches and ate lunch together. . . . Anyone who didn't know how to play, promptly learned, for bridge seemed a "must" at any mealtime. . . . We think of the way we rushed to catch the bus and then ran by the bulletin board in Johnson Hall to get the latest word on when who met where. . . . Then hurry, hurry to class to become part of the routine hustle and bustle down the long hall of the Arts Building. . . . We offered sympathetic smiles to the resident students when they complained of that deadline to be in after dates, for we loved to pretend that we just NEVER had to be in before the wee hours of the morn. . . . We also had the worry and fretting of arranging senior courses. . . . We had to have these certain courses to graduate. . . . For us nothing else would do. . . . We had to get in those student teaching hours. Of course, our schedules worked out and we graduated triumphantly and yet a little sadly, for we'll never forget those little things that were so important to the DAY STUDENTS OF MEREDITH COLLEGE.



Mrs. Club



The primary purpose of the "Mrs." Club is to give help to the newly-wed. In addition, the group hoped to make a closer bond between themselves and the school. Especially did the wives want their husbands, who at times feel left out, to realize that they, too, are linked with the college.

During the year activities consisted of monthly business meetings and socials. At the business meetings discussions included the preparation of quick and inexpensive meals, preparation of homework while mixing a cake, the concoction of exotic—bound to please husbands—dishes, the making of inexpensive Christmas decorations and gifts, the preparation of homework while feeding the baby and the function of social amenities in the home.

Socials included dinner meetings using motifs of the current holiday season, one open meeting, featuring a marriage counselor, to which engaged girls and their fiances were invited, a sumptuous covered-dish supper, a delightful Valentine party, and a moonlight hayride.

Marriage and school *can* mix!.

Nominating Committee

The Nominating Committee at Meredith, made up of the presidents of all the major organizations on the campus, the presidents of the classes, editors-in-chief of the publications, the college marshal, and three faculty members chosen by this committee to serve as advisers, endeavors to lead the student body in carrying out democratic principles in the elections on the campus. This group selects



those students who they feel, are most capable of holding office, and presents them to the student body with the understanding that the student body can petition and enter other persons in the list of nominees. The Nominating Committee also chooses all the officials who serve at the polls and all who count votes.



Meredith Little Theatre

The show must go on . . . and will, we have discovered. The Meredith Little Theatre, with much effort, has been expanded this year to make this the motto of many of our students. Amid trials and tribulations, the like of which we had never seen, a brilliant suggestion would arise from the blue and solve all our problems. In some cases, a hitherto latent genius would become evident, and, eventually, specialists in all fields developed and the organization became a smoothly functioning one.

This year, the major productions were, in the fall, *Goodby, My Fancy*, and, in the spring, *The Silver Cord*. The former is a clever satire on the problems of a modern college president, the latter is a tragedy dealing with a man's attempt to readjust to his family after his marriage. The Little Theatre also sponsored Stunt Night, and a one-act play contest in co-operation with the *Acorn*.

Through participation in one major production of the Little Theatre, a student earns membership in the organization and is entitled to add honor points to her score toward membership in Alpha Psi Omega Fraternity, the national honorary dramatic association on our campus.

MICKY BOWEN

President





Even the stars agree . . . *Goodbye, My Fancy* was a marvelous success

Some of the hard working cast members relax between scenes





Get your dramatic moments here, folks, You name it, the Little Theatre will play it . . . but please, *please* don't disturb the set worker!



Education Club

Reading, 'riting, and 'rithmetic—the three "R's"! They are important in our club, but the most important "R" is "R" you interested in education? Any girl on the Meredith College campus is eligible for membership if she meets this requirement. Prospective teachers are urged to join the Education Club.

Our ambition: "Every prospective teacher an active participant in the club and its programs." An attempt is made to present programs which are interesting, educative, and suggestive of procedures for teachers.

Meredith Student League of Women Voters

Because Meredith students are among the future voters, law-makers, and office-holders of the United States, in 1930 the Student League of Women Voters was organized on the campus to encourage its members to become more intelligent in affairs of local and national interest.

Each year Meredith participates in the North Carolina Student Legislature at the Capitol. Our Student League has its biggest job of the year at this time as it has to draw up and present a bill to the Student General Assembly. Another project of the League has been to promote absentee voting among the students on the campus.

These and other activities of the Student League offer practical experience in the realm of politics for students who are to be the voters of the future.





I. R. C.

If you ever want to know what's going on in Germany, or Alaska, or Korea, just come to a meeting of the International Relations Club. We don't profess to know all the answers, but we look forward to meeting together in order to put forth our several questions and opinions. Very often we have guest speakers who talk with us about particular problems. All of us in the International Relations Club enjoy our club and its activities. We feel that this has been a very successful year.

Canady Math Club

What makes the planetarium work? What happens in a statistics laboratory? The Canaday Mathematics Club found the answers to these questions when they visited the Morehead Planetarium and the State College Statistics Laboratory.

In pursuing the purpose of the club, which is to promote interest in mathematics and to provide information on its current application, the members have learned to use the slide rule, presented a movie on applied mathematics, and discussed the different careers a math major can enter. For fun they have worked mathematical tricks, puzzles, riddles, and fallacies.

The math majors realize the vital importance of math in the world today and believe there is an interesting and pleasant way to learn the so-called "hard subject."





Barber Science Club

In case you are wondering about the activities of this scientific group, we might assure you that we don't engage in research for some unknown element, investigate the cures for cancer, nor work with atomic energy! However, some of our activities are concerned with such subjects. During this year our programs have included lectures by well known men of science, discussions on photography, and field trips.

Perhaps the most enjoyable project of the club is the annual field trip to the Duke University Marine Laboratory in Beaufort, North Carolina. On this weekend we collect and study marine animals and plants. What fun we have!

The club membership includes science majors and those taking elective courses in this field. The Barber Biology Club, organized in 1929, later became the Barber Science Club in order to include all science majors. Since the date of its organization, the club has played an increasingly important part in the campus life. We believe its future has a wide horizon; like science in general, it has untold potentialities!

Freeman Religion Club

An aim of the Freeman Religion Club is to help its members realize that the religion of a person or country is basic in determining the kind of problems they have to face and in deciding just how they will meet these problems. To carry out this purpose, then, we strive to get acquainted with world issues and with people of all nations.

Mr. Leonard Allan, at our first meeting, showed us Africa and the race prejudice, slum conditions, and static education that exist there. Miss Lucy Steele, who has recently studied at Oxford, helped us picture the life of an English college student and compared his situation to ours here in America. Mr. J. C. Herrin showed us a way to solve our own problems in introducing us to great devotional literature of the past and present. Rabbi Schwartz, leader in the Jewish Orthodox Synagogue here in Raleigh, led us to an understanding of the religious customs and observances of his people. All these programs were centered in a concern for the growth of the individual member in creative Christian living.





Colton English Club

The Colton English Club has a definite purpose on our campus. Though no one of us thinks herself as a second Edna St. Vincent Millay, we do try to foster the creative spirit at Meredith. And if a student likes to write, enjoys stimulating discussion, and is interested in becoming a more well-rounded individual, she has a place in the Colton English Club.

Since our theme for the year was "Meredith majors at work," our guest speakers were quite at home in the Browsing Room, where programs are held. Among our very interesting speakers was Jean Branch, now a graduate student at Carolina, who told of her work in Christian journalism for various publications of the Northern Baptist Association. Frances Alexander, of Station WPTF, discussed her work as a continuity writer. A surprising departure from the usual work of a graduate in English was provided by Betty Moore, who told of her duties in the bond department of a bank. Of great interest to every English student was Edith Buchanan's talk on her studies in English in the Duke Graduate School. Our own Mrs. Jim Reid delighted us all with her accounts of faculty and student publicity work at Meredith. Our program made us as proud as our graduates are eager to be "English majors at work."

Tomorrow's Business Women's Club

Tomorrow's Business Women's Club has chosen for its theme this year vocational possibilities open to graduates in business. Our programs, centered in this theme, have been varied through the cooperation of outside speakers representing different fields of business. In addition, the Christmas dinner party at the Cameron Village Restaurant, the showing of a movie, and the visit from ole "grads" all have added interest to our meetings.

Under the efficient leadership of Joyce Bailey president; Peggy Thornton, vice-president; Sue Conley, secretary; Asha Farior, treasurer; and Beth Boggs, program chairmen; we have enjoyed an eventful and worthwhile year. We believe that each of our members, the junior and senior business majors, and our sophomore pledges now can visualize more positively that "certain career" after graduation.





Bee Hive

What better name could have been given to the Meredith Supply Store than THE BEE HIVE! For, into this store swarm students for those in-between-meal snacks, that urgently needed cosmetic, that box of stationery to write "Dear John," that notebook paper or pencil, or any other necessity; and around the toaster or table they hover to exchange the latest in news and gossip.

The Bee Hive is pleased and proud of the implications of its name, because its primary purpose is to serve the students in all the ways suggested. Under the guidance of the Bee Hive Committee, which is composed of a representative elected from each class, and Dr. Cannady, faculty adviser, the Bee Hive is the STORE for students, and tries to serve them behind the counters in every way possible and to be successful enough to convert the profits made by the store into campus improvements.

Alpha Rho Tau

Are you a paint-and-charcoal-smearred inmate of the art lab? Do you like to wander through the gallery and wonder what strange creatures created the works of art found there? Do you like a good argument? Are you interested in the possibilities that art can offer you in the future?

Then you, my friend, are the kind of creature that belongs, or should belong to the Alpha Rho Tau.

We have discussions, and we speakers who risk their lives to argue with us. We have working sessions in which everyone gives her all to the cause of art . . . or the cause of a forthcoming exhibit. We try to get the rest of the students interested in art, painters, and at trying their hand in sketching or painting. So grab a smock and an old paint brush; come on down and see the fun we have in ALPHA RHO TAU.





Granddaughters' Club

"Unique Distinction!" that's the motto of the Granddaughters' Club! Our mothers blazed a trail before us, and we take up the challenge by right of inheritance.

During the year we strive to create a feeling of closeness between Meredith and the alumnae by visits from the "grads," talks on "What It Means to be an Alumna of Meredith," and discussions of Meredith "Then and Now." We take part in the community affairs of the City of Raleigh through participation in the Needlework Guild by sponsoring each fall a project for this organization.

This year, we proudly claim forty-one members—among them two sets of twins and two great-granddaughters. We take pride in being the only organization on the campus in which parentage determines membership—hence, we are literally "born into the Granddaughters' Club."

Home Economics Club

For the year 1950-51, the Home Economics Club thought it appropriate to choose as its theme "Mid-Century Milestones." The members found themselves trying to see the privileges and obligations of today as a link between a noble history in the field of home economics and a promising future.

The Home Economics Club, therefore, included in the programs for the year: a study of its heritage and of the people who have made the field what it is today; a review of clothing fashions since the turn of the century; the 1950 version of hospitality, which took the form of a tea for home economics leaders and high school students; and, as a climax, the impressive ceremony of the Betty Lamp, which installed freshmen as fullfledged members of the National Home Economics Association.

The pleasant contacts with the adopted school in Germany and the contribution to the programs by foreign students on the campus have helped give a vision of the responsibilities of the Home Economics Club.





Sociology Club

To like people and be able to get along with them, one must first understand them and their cultural backgrounds. The Sociology Club gives majors and minors in sociology a chance to learn more about people by studying them, by working with them, and by hearing experts try to explain human behavior.

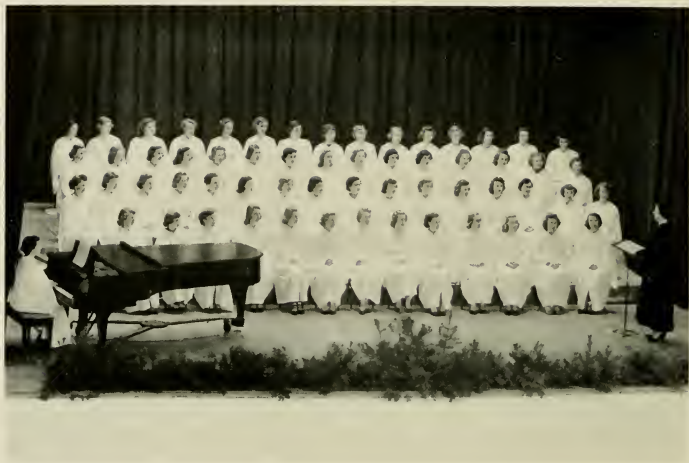
The Sociology Club also brings out the "social" side of life in joint meetings with sociologists from State College and the University of North Carolina. Sociological theory is also put into practice at the Christmas dinner for sociologists, the April breakfast at the Reinlyn House, and a May picnic.

Hoof-print Group

What's all the horse talk? Why not drop into the Hoof-Print club-house and find out? This newly pine-paneled house is the center of activity for some twenty-five horse lovers, all of whom are participants in classes under the direction of their expert teacher and sponsor, Mrs. Miriam Hitt. But horse talk and classes aren't the only activities. Each fall the Palio Parade is led by costumed riders and each spring there is a horse show and a gymkhana, both eagerly looked forward to by all of the students. With each new semester, the Hoof-Print Club welcomes new members, who in turn spend many enjoyable hours riding on the beautiful trails near the campus.

What is horse talk? Any member of the Hoof-Print Club will tell you—it's the language of horse lovers!





Meredith College Chorus

DIRECTED BY MISS BEATRICE DONLEY

<i>President</i>	JEAN OLIVE	<i>Librarians</i>	REBECCA KNOTT
<i>Vice-President</i>	NANCY HEFNER		JEAN MILLER
<i>Secretary</i>	BARBARA COX		MANY ANN WESTBROOK
<i>Treasurer</i>	BETTY JO SMITH	<i>Accompanists</i>	NANCY COOK
			JOANNE MASON
			JOAN NEIGHBORS

The Meredith College Chorus, a new organization on the campus this year, is the outgrowth of two choral groups, the Choir and the Glee Club. Membership is open to students of all departments of the college, this year's Chorus of sixty voices having a fifty per cent representation of non-music majors.

Special performances throughout the season were Founders' Day and Christmas Day radio broadcasts, the annual Christmas and spring concerts, and Commencement programs. Appearances at the Baptist Student Union Convention in Raleigh, the State Baptist Convention in Durham, and a short tour during the spring completed the activities of the group.

The preparation of extensive repertoire adequate to meet the various demands upon the Chorus necessarily entailed constant and conscientious rehearsing, yet the experience of joyful cooperation was in itself rewarding.

The German Club

This year marked the beginning of a new club on the Meredith Campus—the German Club. The activities, under the sponsorship of Dr. Freund, have varied from movies on different places of interest in Germany, to a Christmas party at the Freunds. The club intends to bring the students of German in contact with more spoken German and to create an atmosphere of pleasure by increasing the knowledge of the German language and of the people of Germany.





Macdowell Music Club

Do musical events in Raleigh slip up on you before you know it? The Macdowell Music Club may be able to help you. Under the leadership of Mr. Stuart Pratt, our sponsor, we try to keep ahead of the musical schedule for Raleigh. Our programs are frequently based on reviews of future concerts; at other times there are informal talks and lectures on current topics of interest.

The only prerequisite for membership in the club, which is a member of the North Carolina Federation of Music Clubs, is an interest in promoting wholesome musical activities on our campus.

The Psi Chi Psychology Club

For those girls who thought they were schizophrenic, paranoid, or manic-depressive, and for all others interested in psychology, the Psi Chi Club was formed in the Spring of 1950. The main purposes of this organization, other than relieving frustrations, are to promote interest in the field of psychology, provide an avenue for contacts with other schools, and help students in the development of well rounded personalities.

Programs include movies, reports on student projects, talks, and demonstrations by the faculty and by outside speakers. In the fall we were fortunate enough to hear directly from one of representatives to the Paris Meeting of the World Federation for Mental Health—our own D.G.P.! Members of the staff at Dix Hill, Duke University, State College, and the Raleigh Mental Hygiene Clinic have also helped to make our meetings a success.

Students who have completed six hours in psychology are eligible for active membership; those who have completed, or are taking a three hour course, are eligible for associate membership. All others interested in psychology or anxious to know "what's wrong with them" are welcome to the open meetings.





AT



HLETICS

Athletic Association



HOPE HODGES
President

The Meredith College Athletic Association is a campus-wide organization, of which every student is automatically a member. It has as its aim the development of fair play and good sportsmanship among the students, the promotion of skills in wholesome leisure time activities, and the development of sound body and mind.

A governing board consisting of twenty-one college students, with representatives from each class, plan and carry out the yearly program of activities. Miss Doris Peterson, Director of Health and Physical Education and Miss Phyllis Cunningham, Instructor in Health and Physical Education serve as faculty advisers.

Besides conducting a full program of competition in the many seasonal sports, the A.A. also sponsors such all campus projects as Monogram Club, Palio, Stunt Night, Christmas Caroling, Folk Dance Concert, Faculty-Student Play Day, Posture Week, Corn Huskin' Bee, Horse Show, and May Day.





CONGRATULATIONS, HOPE!!

Monogram Club

The Meredith College Monogram Club is an honorary organization composed of those girls who have earned a thousand points for participation in any of the various activities and sports sponsored by the Athletic Association. Its purpose is to encourage and promote good sportsmanship and fair play through competitive activity. The Monogram Club is also a service organization, lending leadership in many campus-wide activities, as well as assisting with Athletic Association projects.

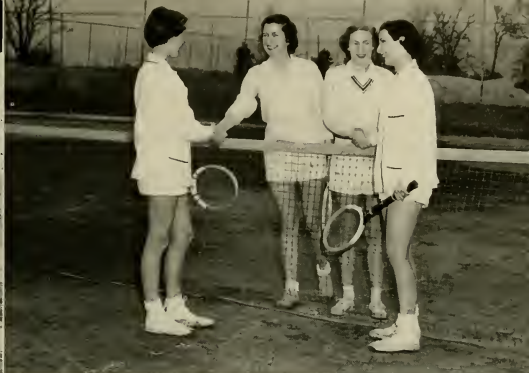


Folk Dance Group



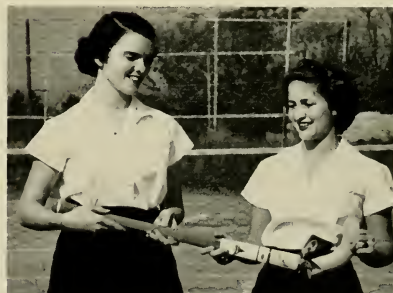


Swimming



Tennis

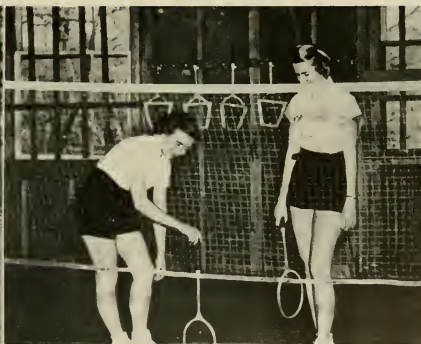
Hockey Stick Winner



Archery



Badminton





Basketball

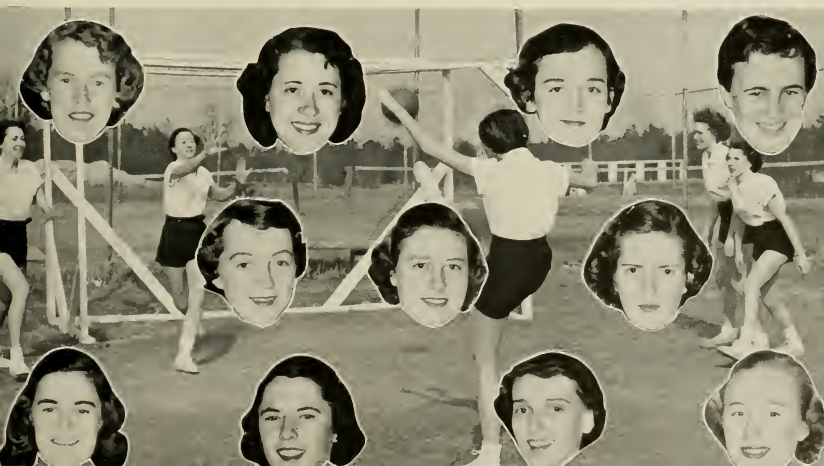
Hockey





Softball

Speedball









Friendliest



PATRICIA LAWRENCE



Miss Meredith



MARJORIE JOYNER



Most Original



DONNA WALSTON



Most Stylish



EVELYN BARDEN



Most Popular



MARILYN MILLS



Cutest



JUNE SHORT



Most Intellectual



NANCY WALKER



Most Attractive



JUN LIN WONG



Wittiest



MARION WINSTON



Most Versatile



BETTY JANE HEDGEPETH



Most Athletic



BETTY JEAN SHULER
HOPE HODGES



*Best All Round
Town Student*



LE GRACE GUPTON



College Marshal



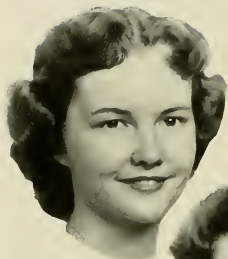
DOROTHY CUTTS

1950 May Queen



ELIZABETH HOLFORD

1951 May Court Attendants



Junior attendants:

Mary Alice Randall, Carolyn Ballentine

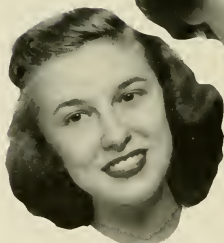


Senior attendants: Barbara Pearson, Evelyn Barden



Freshman attendants:

George Anna Griffin, Marjorie Anne Barnes



Sophomore attendants: Alma Brigman, Ruth Cole

1951 May Queen and Maid of Honor



May Queen
DOROTHY CUTTS

Maid of Honor
MARGUERITE SMITH



Frances Altman
Mary Bland Josey

Patricia Emory
Marjorie Joyner
Nancy Walker

Betsy Goldston
Carolyn Massey

Who's Who



Alpha Psi Omega

For you who love the vivid glare of the footlights, the tension of the second before "you're on," the exhilaration of stepping out of yourself and becoming someone else—for all of you who are part of the theatre—for you was Alpha Psi Omega created. This honorary national dramatics fraternity accepts members on a fifty-point basis. These points are awarded for work in Little Theatre productions including work backstage, make-up assistance, and anything else pertaining to the advancement of dramatics on our campus. The Eta Nu chapter here at Meredith is small, but we were smaller. Our chapter is growing and making itself felt in the affairs of Meredith. Many girls with "greasepaint in their blood" are working on those points towards the time when they too may frame a shingle and carry a membership card and sport the "blue and gold" of Alpha Psi. We are confident that it will not be long before Meredith can boast of one of the most active, most successful, and most satisfying chapters in the fraternity, because we grow larger every year and will continue to do so in the future.



Kappa Nu Sigma

Kallos, Nous, Sophia—these Greek words, which mean beauty, soundmindedness, and intelligence, are the words from which Kappa Nu Sigma Honor Society takes its name. The qualities of the kind of scholarship which Kappa Nu Sigma has tried to further on the Meredith campus are expressed in these words. Those students who have achieved a high scholastic standing over a period of two years make up the membership of this society. Its activities include the sponsoring of an annual spring banquet and lecture and the awarding of a scholarship to the freshman having the highest scholastic standing in her class.



The Silver Shield

On the campus of Meredith College the Silver Shield, honorary leadership society, strives to create right attitudes and to promote devotion to the ideals of Meredith.

Its members seek to attain scholarship, to have a genuine Christian concern for others as they try to relate the organization to campus life, and to dedicate themselves to the purpose which gives Meredith meaning. Service to the school rather than self is the true motive of the Silver Shield.



Sigma Pi Alpha

No man lives alone, but all peoples of the world are now neighbors; for this reason it is more necessary for us to learn foreign languages than it has ever been before. Therefore the Phi Kappa Chapter of Sigma Pi Alpha, national honorary modern language fraternity, honors the students who have an interest and a high scholastic standing in modern languages. With the aim and desire to increase the interest in modern languages among the students, the Sigma Pi Alpha sponsors lectures, meetings, picnics, and parties, as means of showing life and customs in other lands.



Sigma Alpha Iota

Participating in public performances, singing in the chapter chorus, working in the music store, leading vespers, having pledge parties—these are only a few activities of Beta Zeta chapter of Sigma Alpha Iota, a national music fraternity for women. Under the sponsorship of Mrs. Eutsler our programs have emphasized modern and contemporary music in an effort to familiarize the chapter members and the public with this music. Members of the organization are music majors chosen by the local chapter, upon faculty recommendation, for excellence in scholarship, musical ability, and vital interest in music. Because it is a national organization, its members have the opportunity for wide social and professional contacts and for active interest in musical projects of broad scope.

The Year At Meredith

To say that 1950-51 was "just another school term" in the life of Meredith College would be challenged by students as well as by faculty members, for the significant changes and events that took place were ones that affected each individual as well as the college itself.

Early September found the usual swarm of early angels making preparations for the arrival of the "lowly freshmen." The "big wheel" retreat to Crabtree allowed time for full reports of summer romances, for fall plans, and for the usual merriment that accompanies the opening of school. September 14 brought girls all the way from Podo Junction to Havana, Cuba, ready and eager to tackle the task of becoming scholars.

Meredith itself had acquired a new look. The auditorium was more nearly completed; dormitory rooms no longer showered plaster when the doors opened. The floors in Johnson Hall were so shiny that students could see their faces in them.

The students themselves brought a new and strange atmosphere to the campus. All over the campus "ukes" echoed "Five Foot Two" and "You Are My Sunshine," a product of summer camps. The *Twig* announced its change in clothing from white to a more sophisticated professional shade. Even enrollment was something new at Meredith. For the first time in its history Angel Farm opened its doors to 612 students. This factor brought more campus changes.

Half of the infirmary became a dormitory hall; the student government moved out of its office to make room for more students; the dining hall was filled to capacity.

After the new students had been oriented, partied, and helped over their homesickness spells, the Phis and Astros rushed in to bring even more excitement with Rush Week activities. All colors except yellow and purple were hidden for the occasion; posters and politicking seemed to be the cry for all freshman-hungry society members. Saturday morning the dining hall was arrayed with gay society colors, which helped to symbolize the hoped-for victory. Chapel brought the week's outcome: the Phis as this year's winner!

Autumn weather produced more than yellow leaves and whipping wind. It brought football games, big week-ends away from school, and classes going in full swing. A great highlight was the Wake Forest-Meredith day when all angels boarded buses to attend the Richmond-Wake Forest football game. We returned safely with a gift from our Baptist brothers, a statue of an angel to enhance Johnson Hall's beauty. In return for their thoughtfulness we gave the deacons a horseshoe of flowers and a can of paint to help out in their annual trip to the lofty heights of the water tower.

Autumn also brought the Corn-Huskin' Bee with its array of "clems" and "hawg-callers." The State Fair lights began to be seen each night from Stringfield and Vann dorms. The fair itself brought the usual lurid tales of freak shows, thrilling rides, etc. Conventions came into the limelight as Baptist students from all over North Carolina came to Raleigh for their annual collegiate gathering. Meredith had a part in the convention; the Sunday morning service was held in our new auditorium.

November blustered in with a balmy breeze which unfortunately didn't last through the night of Palio. Our first attempt to present the spectacle at night ended in a downpour producing streaked costumes but undampened spirits. The Senior Class reigned triumphant with its theme of Aladdin and his lamp as producers of peace. Next came the juniors dressed in red, white, and blue, led by the statue of liberty floating on a decorated jeep, compliments of State College. Consolation went to the sophomore lightning bugs and frosh harvesters.

The Little Theater displayed new talent material in "Good-by, My Fancy" as the freshman class dominated the stage. The students were delighted with faculty performances as well as the skillful playing of the other roles.

On Founders' Day the seniors got their first taste of real dignity as they marched into the auditorium "a la cap and gown." Dr. Edward McNeill Poteat delivered the message that commemorated fifty-one years of Meredith's growth.

Class work seemed much harder the first of December after mid-term reports came out and term paper assignments were made. Scholarly endeavors were soon overshadowed by preparation for Christmas festivities on campus. The dining hall was decked with silver leaves and a glowing Christmas tree, while Johnson Hall chose the motif of overhanging mistletoe. Musical strains of "Tennessee Waltz" were replaced for a while by "O Come All Ye Faithful" and "Deck the Halls" as Mere-

dith students went around the city singing Christmas carols. The formal dinner and all-night parties helped to put the entire campus in a jovial mood for their homeward journeys.

Visits home brought back a record breaking display of diamonds, fraternity pins and new sentiment for "the boys back home." More and more men were called to train themselves for the Korean battle and for the first time in several years war hysteria became somewhat prevalent on the campus with girls standing in line to buy airmail stamps . . . haunting the kitchenette to make home-made fudge for a "dear buck private" . . . girls rushing to the train station to say a last tearful good-bye. War feelings became more than a dream as girls began to wake up to the seriousness of the world situation.

January brought more than a new year . . . the campus seemed to put on a new atmosphere in preparation for coming exam week. The creative rhythms classes "created their exams" for the pleasure of everyone. Their second annual review entitled "Ports of Call" proved to be a big success.

The water tower suffered from the hands of Wake Forest fraternity pledges. Our stately motto of "Angel Farm" was covered with green and white paint. The only joy it brought was the idea of viewing something different during exam week, for before we knew it the "opportunity for additional brain waves" had descended upon us. The night vigils over a cup of Nescafé and some biology notes were as popular as ever (Guess we'll never learn.) Exam teas gave sought-after relief as we had the pleasure of discussing "the horrors of it all" over a cup of steaming Russian tea.

A new semester brought new faces, new classes and new experiences to everyone. Wedding bells rang out for several girls; more diamonds appeared. The music department adopted even happier countenances as they finally moved into the new auditorium. With a smile denoting "I'll not miss thee at all" thrown at the old auditorium (now affectionately called The Barn), battered pianos were moved into their new places of grandeur. Students scarcely knew how to act amid the beauty of new practice rooms and classrooms.

Religious Emphasis Week came to plant new, stimulating thoughts in the minds on campus. Dr. Ted Adams received one of the best responses that Meredith students ever gave a speaker as they crowded in to hear informal discussions on subjects ranging from devotional life to marriage problems.

Stunt rehearsals started with the renewed motto of every class "this year we'll win." The outcome proved to be a decision that all agreed on, and hopes to win "next year" again were revived.

Spring weather added a colony of blue jays and cardinals to the trees beside the arts building. The court began to look alive again with its leaf-clad trees. Students had the hardship of staying awake in two o'clock classes along with the usual temptations to pluck daffodils from the faculty garden. Signs of spring were quite numerous—violets by the gymnasium, buds on the cherry trees along the drive, hopscotch games on the paths in the court.

Warmer weather helped the days speed by, bringing the frivolity of play day and the beauty of May Day pageantry. In April the juniors stayed clad in bluejeans for almost a week getting prepared for the annual Junior-Senior. The array of "friends, distant cousins, and hastily-made acquaintances" dressed up the dining hall with an added air of joy even though seniors found themselves somewhat sad at the thought of its being their last big "collegiate fling."

As the year neared its close, seniors began packing up their possessions to send back home for good—no blankets to be stored in the attic, no books to be lent to underclassmen, no packing up the bathroom cabinet to use again next year. Another college class graduates; another comes to fill in the gap that it left behind. Yet each class likes to think that such a gap still remains for their thoughts to wander back and find a lodging place in the memories resulting from 1950-51 events.

He: Where?

She: Roy's

He: Where!!

She: ROY'S



BOYLAN-PEARCE

BIBLICAL RECORDER

*Journal of the Baptist State Convention
of North Carolina*

The *Biblical Recorder* has been going into the homes of North Carolina Baptists for 117 years. Our Baptist State Paper Informs, Indoctrinates, Enlists, Inspires, and Unifies, as it serves every cause dear to the hearts of our Baptist forces in this State and beyond.

"The *Biblical Recorder* ought to be in every Baptist Home in North Carolina."

"Blessed is he that readeth, and they that hear the words of the prophecy, and keep the things which are written therein: for the time is at hand."—Revelation 1:3.

L. L. CARPENTER, *Editor and Business Mgr.*
C. W. BAZEMORE *Assistant*



MORE POWER TO YOU!

Since the end of the second world war this Company has been engaged in the greatest expansion program in its history — a hundred million dollar building program that already has resulted in the installation of big new generating units and the modernization and enlargement of substations and other installations. Some 6,000 miles of rural and urban lines have been built and more than 40,000 farm and rural customers have been connected to our lines. The program is continuing and offers you assurance that there will be no shortage of power in this area in the foreseeable future.



CAROLINA POWER & LIGHT COMPANY

BROGDEN PRODUCE COMPANY, INC.

•
Wholesale
FRUIT AND PRODUCE

•
409-415 West Martin Street

NATIONALLY KNOWN COSMETICS

You Can Always Find at

EFIRD'S

•
"ELIZABETH ARDEN"
"COTY" "YARDLEY"
"EVENING IN PARIS"

•
EFIRD'S DEPARTMENT STORE
208 Fayetteville Street Raleigh, N. C.

J. J. FALLON CO., INC.
Florists



205 Fayetteville Street
RALEIGH, N. C.

NORTH CAROLINA EQUIPMENT COMPANY

Construction, Industrial and Logging Equipment
Contractors' and Municipal Supplies

"International Diesel Power"

RALEIGH -- WILMINGTON -- GUILFORD
CHARLOTTE -- ASHEVILLE

CHAMBLEE INSURANCE AGENCY

711 Insurance Building
RALEIGH, N. C.

"Complete Insurance Service"

WE WRITE YOUR STUDENT'S ACCIDENT INSURANCE

Complements of

N. C. THEATRES, INC.

Operators of

AMBASSADOR : STATE : CAPITOL : TOWER
AND VARSITY THEATRES



BOTTLED UNDER AUTHORITY OF THE COCA-COLA COMPANY BY
THE CAPITAL COCA-COLA BOTTLING CO.

W. H. KING DRUG CO.

WHOLESALE DRUGGISTS

RALEIGH, N. C.



*"The House of Friendly and
Dependable Service"*



MANUFACTURERS OF
PAGE'S CRU-MO

Adler's of Raleigh

For Women Who Love Elegance in Footwear

JOYCE

For

Casuals

DELMANTTES by Delman

For

Dress Wear

Ellisberg's

Raleigh's Smartest Shop

126 Fayetteville Street
RALEIGH, N. C.

PERFECT PROTECTION

OCCIDENTAL LIFE INSURANCE COMPANY

Home Office
RALEIGH, NORTH CAROLINA

T. H. BRIGGS AND SONS, INC.

THE BEST IN HARDWARE

220 FAYETTEVILLE STREET

MARTIN MILLWORK COMPANY

RALEIGH, N. C.

SERV-SELF FOOD MARKET

*"We Appreciate Your
Patronage"*

HILLSBORO STREET EXTENSION
Across from Meredith

P. B. DEEP

J. R. PARKER

Patronize
Our
Advertisers

JANTZEN Beachwear

Gloriously Colorful
Extremely Alluring

... at ...

Lewis
OF RALEIGH

112 W. Hargett Street

MOTHER *and* DAUGHTER FASHIONS

*... Highlight every
Campus Activity ...*



FASHIONS

INSURANCE BUILDING

Miriam's

*"Carolina's Most Complete Formal
and Bridal Shop"*

C. H. STEPHENSON MUSIC CO.

★ RADIOS

★ SHEET MUSIC

★ STEINWAY PIANOS

★ RECORDS

★ HAMMOND ORGANS

Visit Us at Our New Store in Cameron Village

DE SOTO

PLYMOUTH

RAWLS MOTOR CO., INC.

RALEIGH, N. C.

DE SOTO

PLYMOUTH

HONEYCUTT FRUIT AND PRODUCE COMPANY

5 WEST LANE STREET

Wherever You Go . . .

Peanut
Butter
Sandwiches



Peanuts
Candy
Potato Chip

Remember This Seal—It's Your Assurance of The Best

OAK LEAVES

Congratulates
the

CLASS OF '51

Grey Taylor Co.

Fisher's
Bakery and Sandwich Co.

Sandwiches, Cakes, Cookies
Pies, Candies, Potato Chips, Etc.

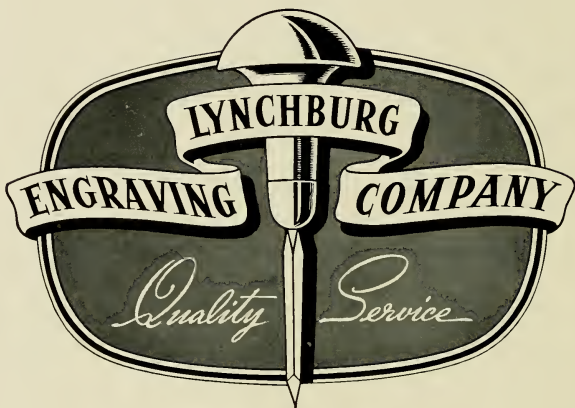
"If It's Fisher's — It's Fresher"

Home Made

Phone 6494

Jean's
of Raleigh

*First in Fashions
in the Carolinas*



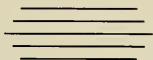
Designers and engravers of
the South's finest school
publications



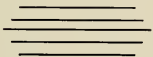
LYNCHBURG, VIRGINIA

WALLER AND SMITH

PHOTOGRAPHERS



OFFICIAL
OAK LEAVES
PHOTOGRAPHERS



12 East Hargett Street
RALEIGH, NORTH CAROLINA



BUILDERS DREAMS

THE OAK LEAVES STAFF
and the
EDWARDS & BROUGHTON
COMPANY

Cooperated to produce this Annual.

•
Letter Press and Lithographed
Annuals produced in our
plant in Raleigh.

•
WRITE FOR OUR
ANNUAL REPRESENTATIVE
TO CALL AT YOUR SCHOOL.

•
EDWARDS & BROUGHTON
COMPANY

Established in 1871
RALEIGH, N. C.

