
WELSH STATUTORY INSTRUMENTS

2009 No. 367 (W.37)

LOCAL GOVERNMENT, WALES

The County of the Isle of Anglesey (Holyhead, Trearddur, Cwm Cadnant, Penmynydd, Pentraeth and Llanfair-Mathafarn-Eithaf Communities) Order 2009

Made - - - - 23 February 2009

Coming into force in accordance with article 1(2) to (4)

The Local Government Boundary Commission for Wales has, in accordance with sections 54(1) and 58(1) of the Local Government Act 1972⁽¹⁾, submitted to the Welsh Ministers a report dated April 2008 on its review of, and proposals for, communities within part of the County of the Isle of Anglesey.

The Welsh Ministers have decided to give effect to those proposals without modification.

More than six weeks have elapsed since those proposals were submitted to the Welsh Ministers.

The Welsh Ministers make the following Order in exercise of the powers conferred on the Secretary of State by section 58(2) of the Local Government Act 1972 and now vested in them so far as exercisable in relation to Wales⁽²⁾:

Title and commencement

1.—(1) The title of this Order is the County of the Isle of Anglesey (Holyhead, Trearddur, Cwm Cadnant, Penmynydd, Pentraeth and Llanfair-Mathafarn-Eithaf Communities) Order 2009.

(2) For any purpose set out in regulation 4(1) of the Regulations, this Order comes into force on the day after that on which it is made.

(3) Articles 6, 9 and 11 come into force—

(a) for the purpose of proceedings preliminary or relating to any election to be held on the ordinary day of election of councillors in 2012, on 15 October 2011;

(b) for all other purposes, on the ordinary day for election of councillors in 2012.

(4) For all other purposes, this Order comes into force on 1 April 2009, which is the appointed day for the purposes of the Regulations.

(1) 1972 c. 70.

(2) The powers of the Secretary of State were transferred to the National Assembly for Wales by the National Assembly for Wales (Transfer of Functions) Order 1999 (S.I.1999/672) and are now vested in the Welsh Ministers by virtue of paragraph 30 of Schedule 11 to the Government of Wales Act 2006 (c. 32).

Interpretation

2. In this Order—

“the Regulations” (“*y Rheoliadau*”) means the Local Government Area Changes Regulations 1976(3);

“Map A” (“*Map A*”), “Map B” (“*Map B*”), “Map C” (“*Map C*”) and “Map D” (“*Map D*”), mean respectively the maps marked A, B, C and D of the County of the Isle of Anglesey (Holyhead, Trearddur, Cwm Cadnant, Penmynydd, Pentraeth and Llanfair-Mathafarn-Eithaf Communities) Order 2009 and deposited in accordance with regulation 5 of the Regulations;

any reference to an electoral division is a reference to an electoral division of the County of the Isle of Anglesey; and

where a boundary is shown on a map as running along a road, railway line, footway, watercourse or similar geographical feature, it is to be treated as running along the centre line of the feature.

3. Changes are made in the local government area of the County of the Isle of Anglesey in accordance with the following provisions of this Order.

Trearddur and Holyhead — change in community areas and consequential changes to electoral arrangements

4. The part of the community of Trearddur shown as hatched area “A” on Map A—

- (a) is transferred to the community of Holyhead;
- (b) forms part of the London Road ward of the community of Holyhead; and
- (c) forms part of the electoral division of London Road.

5. The part of the community of Trearddur shown as hatched area “B” on Map A—

- (a) is transferred to the community of Holyhead;
- (b) forms part of the Kingsland ward within the community of Holyhead; and
- (c) forms part of the electoral division of Kingsland.

6. In the community of Holyhead the number of community councillors to be elected for the Kingsland ward is 2, for the London Road ward is 2, for the Morawelon ward is 2 and for the Porthyfelin ward is 3.

Cwm Cadnant and Penmynydd — change in community areas and consequential changes to electoral arrangements

7. The part of the community of Cwm Cadnant shown hatched on Map B—

- (a) is transferred to the community of Penmynydd; and
- (b) forms part of the electoral division of Llanfihangel Ysgeifiog.

Cwm Cadnant and Pentraeth — change in community areas and consequential changes to electoral arrangements

8. The part of the community of Cwm Cadnant shown hatched on Map C—

- (a) is transferred to the community of Pentraeth; and
- (b) forms part of the electoral division of Pentraeth.

9. The community wards of the community of Cwm Cadnant are abolished and the number of community councillors to be elected for the community of Cwm Cadnant is 12.

Llanfair-Mathafarn-Eithaf and Pentraeth — change in the community areas and consequential changes to electoral arrangements

10. The part of the community of Llanfair- Mathafarn-Eithaf shown hatched on Map D—

- (a) is transferred to the community of Pentraeth; and
- (b) forms part of the electoral division of Pentraeth.

11. In the community of Llanfair-Mathafarn-Eithaf the number of councillors to be elected for the Llanbedrgoch ward is 2.

23 February 2009

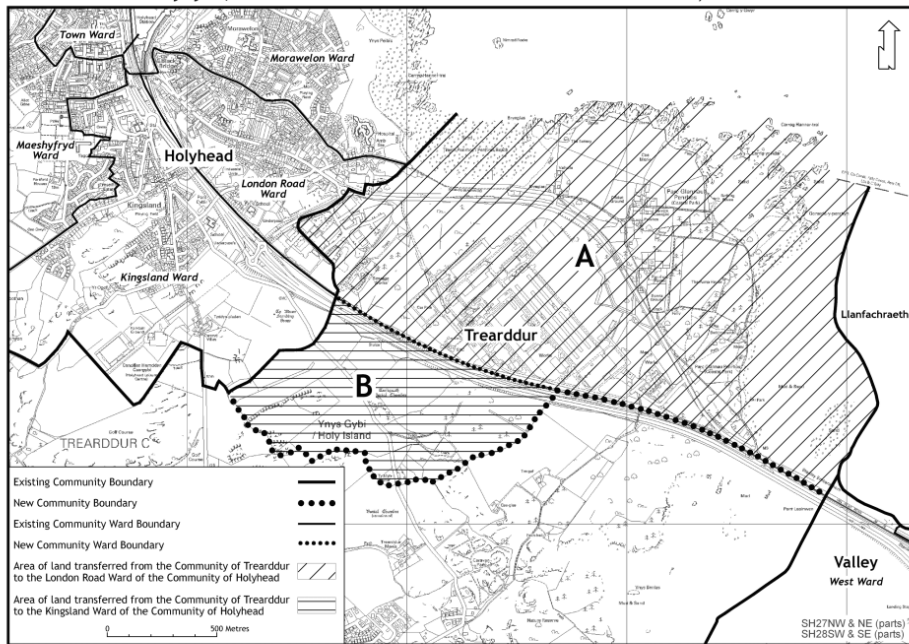
Brian Gibbons
Minister for Social Justice and Local
Government, one of the Welsh Ministers

Status: This is the original version (as it was originally made). This item of legislation is currently only available in its original format.

EXPLANATORY NOTE

(This note is not part of the Order)

Map A of the County of the Isle of Anglesey (Holyhead, Trearddur, Cwm Cadnant, Penmynydd, Pentraeth and Llanfair-Mathafarn-Eithaf Communities) Order 2009

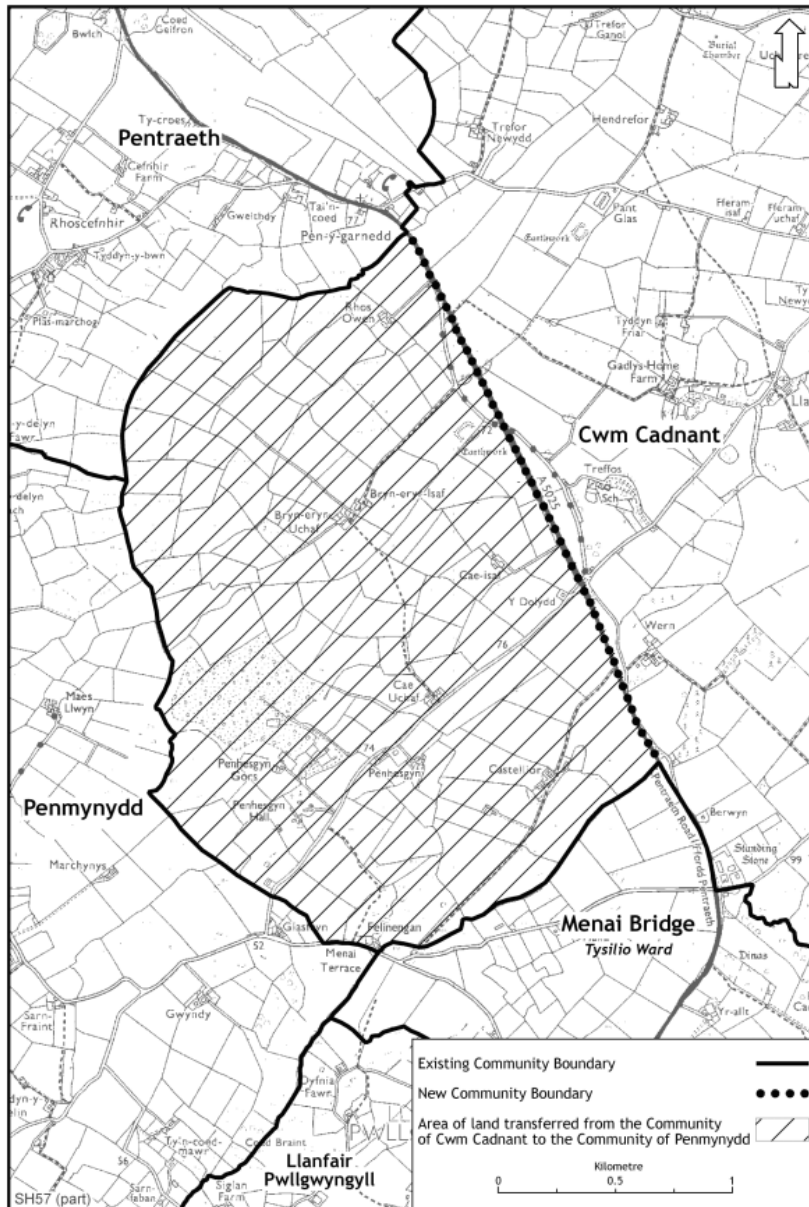


This map is based upon the Ordnance Survey map by the Welsh Assembly Government with the permission of The Controller of Her Majesty's Stationery Office. © Crown copyright 2009. All rights reserved. Unauthorised reproduction infringes Crown copyright and may lead to prosecution or civil proceedings. Licence Number: 100017916

126.08-09a Cartographics
Welsh Assembly Government

Status: This is the original version (as it was originally made). This item of legislation is currently only available in its original format.

**Map B of the County of the Isle of Anglesey
(Holyhead, Trearddur, Cwm Cadnant, Penmynydd,
Pentraeth and Llanfair-Mathafarn-Eithaf Communities) Order 2009**

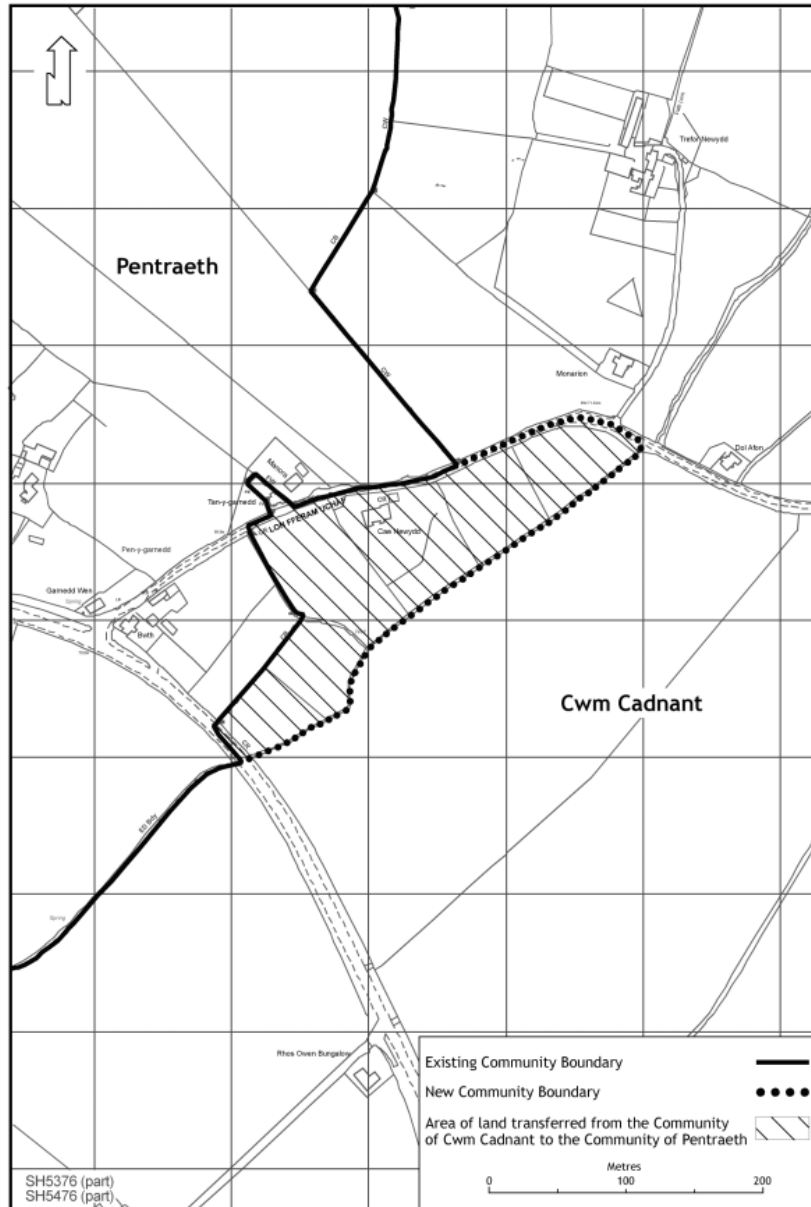


This map is based upon the Ordnance Survey map by the Welsh Assembly Government with the permission of The Controller of Her Majesty's Stationery Office. © Crown copyright 2009. All rights reserved. Unauthorised reproduction infringes Crown copyright and may lead to prosecution or civil proceedings. Licence Number: 100017916

126.08-09b Cartographics
Welsh Assembly Government

Status: This is the original version (as it was originally made). This item of legislation is currently only available in its original format.

**Map C of the County of the Isle of Anglesey
(Holyhead, Trearddur, Cwm Cadnant, Penmynydd,
Pentraeth and Llanfair-Mathafarn-Eithaf Communities) Order 2009**

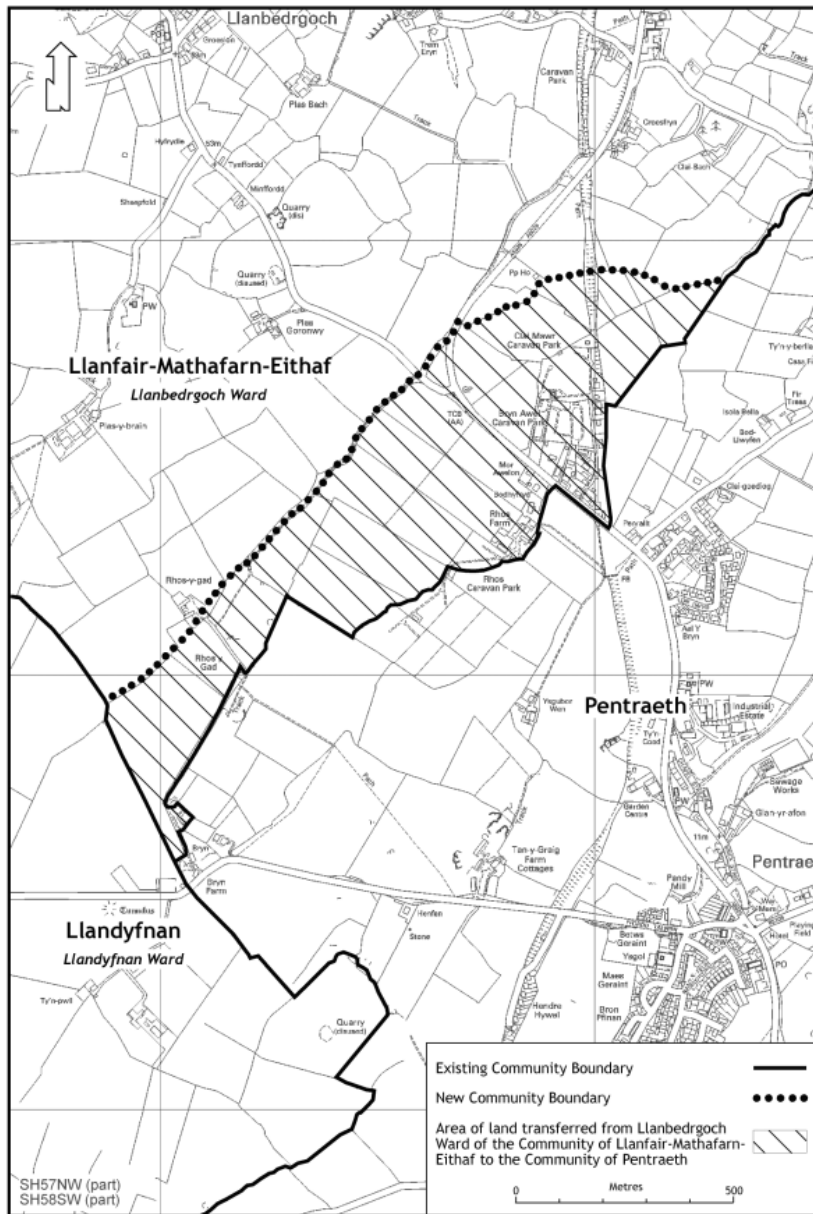


This map is based upon the Ordnance Survey map by the Welsh Assembly Government with the permission of The Controller of Her Majesty's Stationery Office. © Crown copyright 2009. All rights reserved. Unauthorised reproduction infringes Crown copyright and may lead to prosecution or civil proceedings. Licence Number: 100017916

126.08-09c Cartographics
Welsh Assembly Government

Status: This is the original version (as it was originally made). This item of legislation is currently only available in its original format.

**Map D of the County of the Isle of Anglesey
(Holyhead, Trearddur, Cwm Cadnant, Penmynydd,
Pentraeth and Llanfair-Mathafarn-Eithaf Communities) Order 2009**



This map is based upon the Ordnance Survey map by the Welsh Assembly Government with the permission of The Controller of Her Majesty's Stationery Office. © Crown copyright 2009. All rights reserved. Unauthorised reproduction infringes Crown copyright and may lead to prosecution or civil proceedings. Licence Number: 100017916

126.08-09d Cartographics
Welsh Assembly Government

This Order is made in accordance with section 58(2) of the Local Government Act 1972. It gives effect to proposals of the Local Government Boundary Commission for Wales ("the Commission") which reported in April 2008 on its review of community boundaries in part of the County of the

Status: This is the original version (as it was originally made). This item of legislation is currently only available in its original format.

Isle of Anglesey. The Commission's report recommended changes to the boundaries of Holyhead, Trearddur, Cwm Cadnant, Penmynydd, Pentraeth and Llanfair-Mathafarn-Eithaf communities and consequential changes to electoral arrangements. This Order gives effect to the Commission's recommendations without modification.

Prints of the maps showing the boundaries are deposited and may be inspected during normal office hours at the offices of Isle of Anglesey County Council, Llangefni and at the offices of the Welsh Assembly Government at Cathays Park, Cardiff (Local Government Policy Division).

The Local Government Area Changes Regulations 1976 referred to in article 2 of this Order contain incidental, consequential, transitional and supplementary provisions about the effect and implementation of orders such as this.