

F  
72  
7 A45

*Along the*

*Old North Shore*

*with President*

**TAFT**



Showing

**THE SUMMER CAPITOL**

*and 57 other views*



Copyrighted 1902



F72  
E7A45



## “The Old North Shore”

FROM the earliest colonial times the rugged coast line extending northward from Boston to rocky Cape Ann has been called “The North Shore.” This coast borders upon historic Massachusetts Bay, and the mouths of numerous small rivers and the waters of the sea have formed it into a series of curious peninsulas and remarkable islands which conceal or protect many safe and deep anchorages.

The first colonizing efforts of the early settlers were directed toward the less forbidding southern shores of the bay, but the fine harbors and teeming fishing grounds of the north soon proved to be powerful magnets to attract later arrivals. A few years after the landing of the Pilgrims at Plymouth the seat of power and influence was transferred to the more populous and prosperous colonies of the Old North Shore.

During the Revolution the North Shore was intensely patriotic. Thousands of her sons served in the army of Washington from Bunker Hill to Yorktown, and later, in 1812, her bold privateersmen harried the British shipping to distraction.

Here has been produced the hardiest of sailormen; the deep-sea fishers of Gloucester, Marblehead and Beverly, and the world-mariners of Salem who traded in every port on the globe. Steam navigation has driven the clipper-built ships of the North Shore from the seas, but the coast yet retains the premier position in the fishing industry.

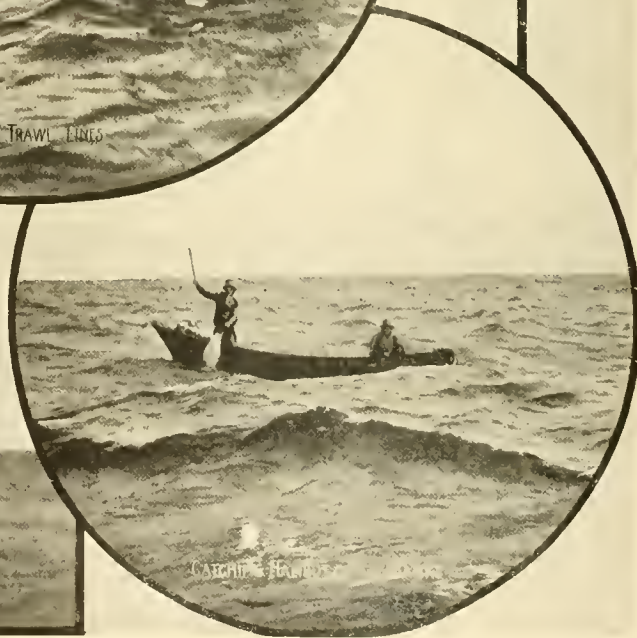
This ancient Shore has been a favorite with the poets and story-tellers. Longfellow, Whittier, Hawthorne and others have loved to wander along its beaches and to roam among its rocks. They have made it the scene of many of their classics.

Although several of the old commercial cities of the North Shore have partially changed their character and have to a more or less degree become manufacturing communities, they have preserved with jealous care much that is quaint and interesting to the traveler.

But it is as a summer resort that the North Shore is now especially famous. Magnificent hotels, palatial residences and numberless attractive cottages dot the entire outline of the coast, together with the mansions of older proprietors and the homes of the toilers of the sea. Here year after year vast armies of tired humanity gain a new grip on life from breathing the salty winds of the great ocean.

PUBLISHED BY L. H. NELSON COMPANY, PORTLAND, MAINE.

PROPRIETORS OF NELSON'S INTERNATIONAL SERIES OF SOUVENIR BOOKS



#### FISHING ON THE BANKS

The men of the fishing fleets ply a dangerous calling. The vessels at anchor on the banks are exposed to many perils, not the least of which is the possibility of being cut down by the sharp prow of a towering liner. Dorymen are often separated from their vessel by the fog and never seen again, or rescued only after intense suffering. The story of a successful season is always marred by some tragedies.





SHORE-FISHING BOAT



YACHTS



FISHING SCHOONER



SEINER

#### REPRESENTATIVE NORTH SHORE BOATS

The schooners of the North Shore fishing fleets are the best heavy weather small craft afloat. They are especially made for hard knocks and speed by the most expert designers and builders. Many of them are built on the lines of cup defenders and can show a taffrail to the purely racing craft in any kind of rough weather. The coast is the home of many prosperous yacht clubs famous for their hospitality.



#### THE CAPE ANN SHORE

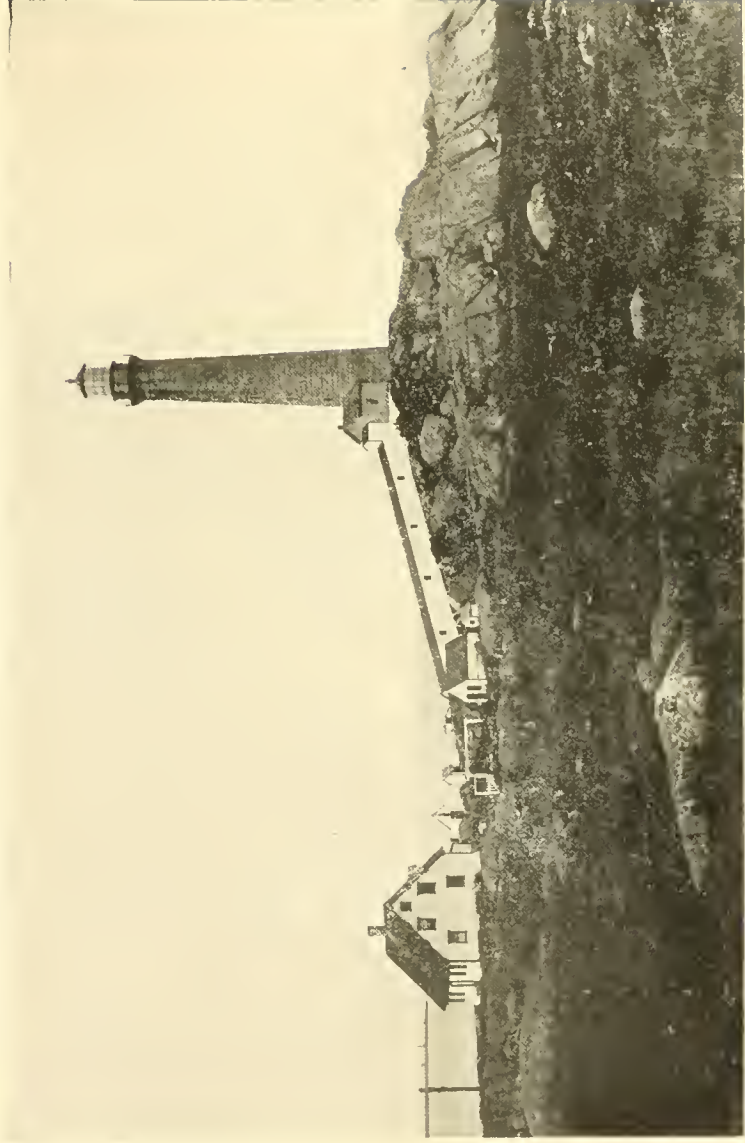
The surf-beaten rocks of Cape Ann must present much the same appearance now that they did to the early discoverers. In 1614 Captain John Smith explored these wild shores and bestowed the extraordinary name of Cape Tragabizanda in remembrance of a romantic episode in his life. Fortunately the name given by less sentimental voyagers has demonstrated the survival of the fittest.





**MOTHER ANN, EASTERN POINT**

This massive rock formation at the extremity of Eastern Point bears a wonderful resemblance to the contour of a woman in a reclining position. Although a dangerous point, it is a welcome object to the long-absent fisherman.





#### SCENES AT BASS ROCKS, CAPE ANN

The Bass Rocks, nearly opposite Thacher's Island, are broken, jagged masses of rock where the force of the greatest waves of old ocean, and even the mildest seas, are churned into spray and foam. From Bass Rocks, Long Beach stretches toward Land's End. Yacht races are not uncommon in the waters off Cape Ann. The summer fleet of pleasure craft is represented in the harbors by every variety of power and rig.



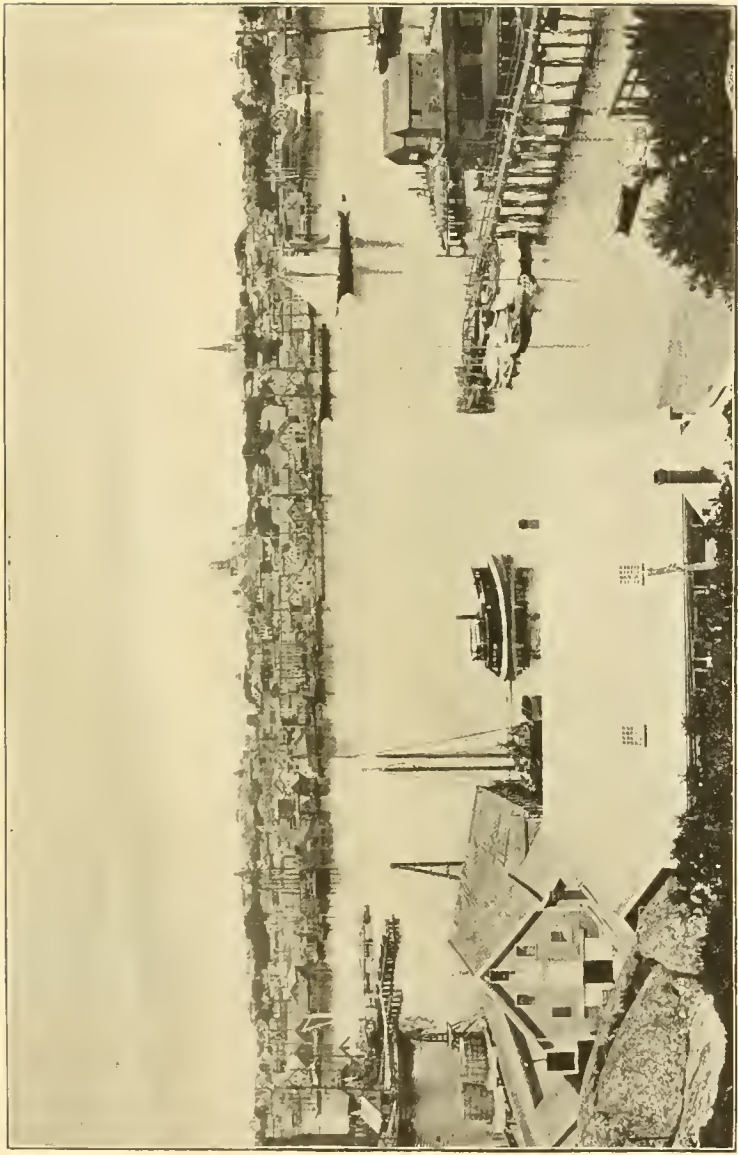


Drying Sails.



Along the Wharves.

CHARACTERISTIC SCENES AT GLOUCESTER

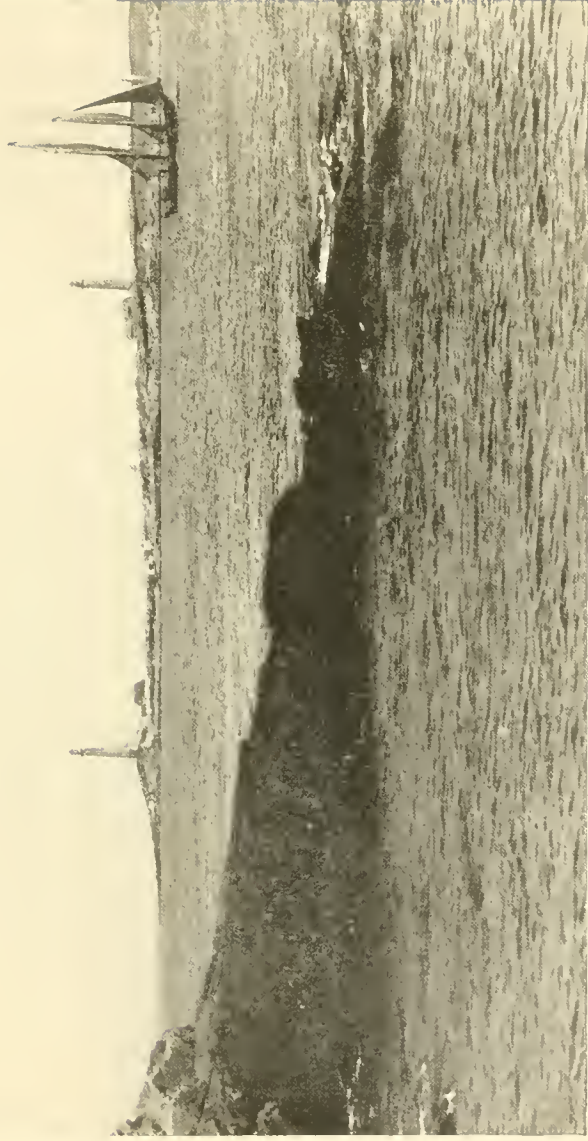


GLOUCESTER FROM THE HARBOR



HARBOR FROM THE CITY



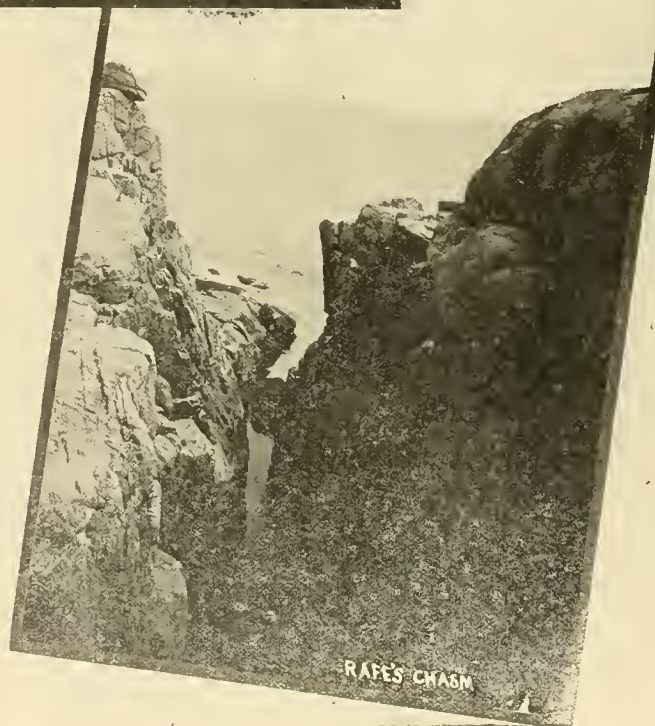


#### THE TWIN LIGHTS, THACHER'S ISLAND

The Twin Lights of Cape Ann are powerful Fresnel lanterns and are housed in two granite towers, each 112 feet high and one-third of a mile apart. One of the lanterns is said to have been hit by a shot from a rebel cruiser during the Civil War.







#### BEAUTIES OF MAGNOLIA

Magnolia, to the west of Gloucester, presents to the passing mariner a view of soft green hills and a rocky and sometimes precipitous shore. Rafe's Chasm is a remarkable fissure in the great cliff which fronts the ocean. When a heavy sea is running the roar of the waves as they sweep through is appalling. The Flume is another cleft in the trap rock. Lover's Lane is a pleasing bit of road where the shore is more accessible.



Copyright, 1904, Detroit Photographic Company.

#### OCEANSIDE HOTEL AND ITS COTTAGES

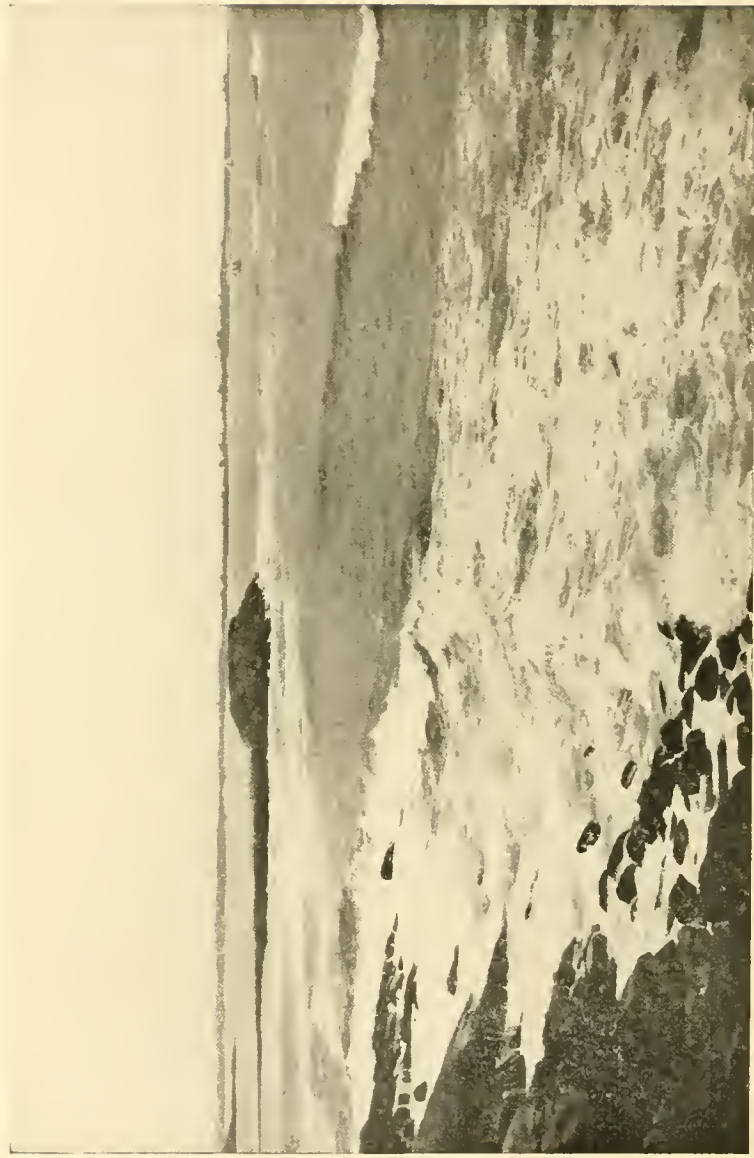
This grand hotel, one of the largest on the North Shore, is delightfully located on one of the most commanding sites in Magnolia. It is a splendid proof of the growing popularity as a summer resort of this coast, where "a sup of New England's air is better than a whole draught of Old England's ale."





MAGNOLIA POINT, MAGNOLIA

Here the cottages and hotels are thickly clustered. The foreground gives a good idea of the stern character of the Magnolia shore. The small iron cross near the center foreground marks where the dead from the "Hesperus" were found.



NORMAN'S WOE, MAGNOLIA

This frowning mass of rock a few miles from Gloucester was the scene of Longfellow's poem, "The Wreck of the Hesperus."  
"And fast through the midnight dark and drear,  
Through the whistling sleet and snow,  
Tow'rds the reef of Norman's Woe,"





PRESIDENT WILLIAM H. TAFT AND MRS. TAFT

President Taft was born September 15, 1857, Cincinnati, Ohio. Married Miss Helen Herron of Cincinnati, June 19, 1886. Mr. Taft is the twenty-seventh President of the United States. During the summer months Mr. Taft and his family reside at Beverly Cove, on the famous "North Shore."



#### THE SUMMER HOME OF PRESIDENT TAFT

Located at Woodbury's Point, Beverly Cove (Beverly Farms) Mass. Here the President and his family sojourn during the summer months when life in Washington is not comfortable. During this period Beverly takes on the atmosphere of the Summer Capitol of the United States, and the coming and going of cabinet officers, statesmen and diplomats are every-day events.



HALLWAY, PRESIDENT TAFT'S SUMMER HOME

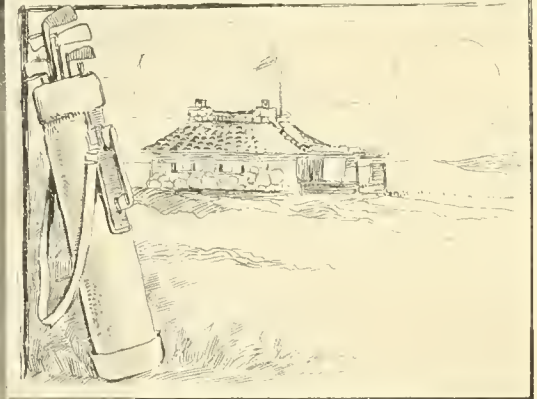
The summer residence of the President was selected for its peculiarly attractive location, and the comfortable interior arrangements. The hallway is a pleasing example of the roomy effect now considered indispensable in modern summer homes. It is not improbable that the march of events may bring distinguished historical eminence to this structure during its occupancy by President Taft.





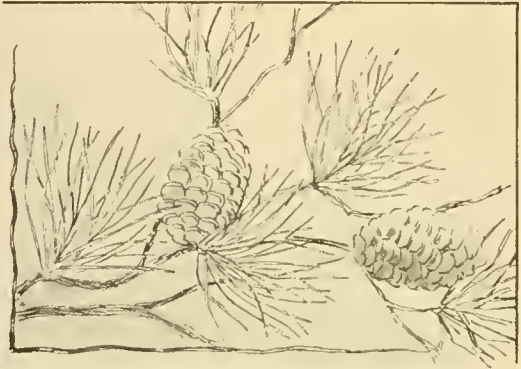
COPYRIGHT. BY WALDON FAWCETT.

PRESIDENT TAFT AND MEMBERS OF HIS FAMILY  
Ready for an outdoor tramp.



#### THE PRESIDENT AT PLAY

President Taft spends a large share of his vacation time in golfing. The President enjoys the reputation of being an expert player. Two splendid links are located near the Summer Capitol, and a small army of local players provide ample opportunity for the President to meet foemen worthy of his steel.



THE FAMOUS ESSEX COUNTY CLUB  
A social rendezvous near the Summer Capitol.

LINKS OF THE ESSEX COUNTY CLUB  
A golf course much favored by President Taft.





THE MYOPIA HUNT CLUB, HAMILTON, MASS.

Probably the most famous organization of its kind on this side of the Atlantic. The ample grounds surrounding the club buildings include a golf course of superior excellence.



THE FAMOUS SINGING SANDS AT MANCHESTER-BY-THE-SEA  
A favorite locality of President Taft.



HOTEL PRESTON, BEACH BLUFF

This immense hotel is situated at Beach Bluff, a picturesque seaside resort on the North Shore within a half-hour's ride by express from Boston. The charm of Beach Bluff lies in the combined beauty of the sea and wooded country, making it possible to please every lover of Nature. The hotel commands distant views of Nahant, Boston Harbor and Nantasket on the south, and Marblehead on the north.



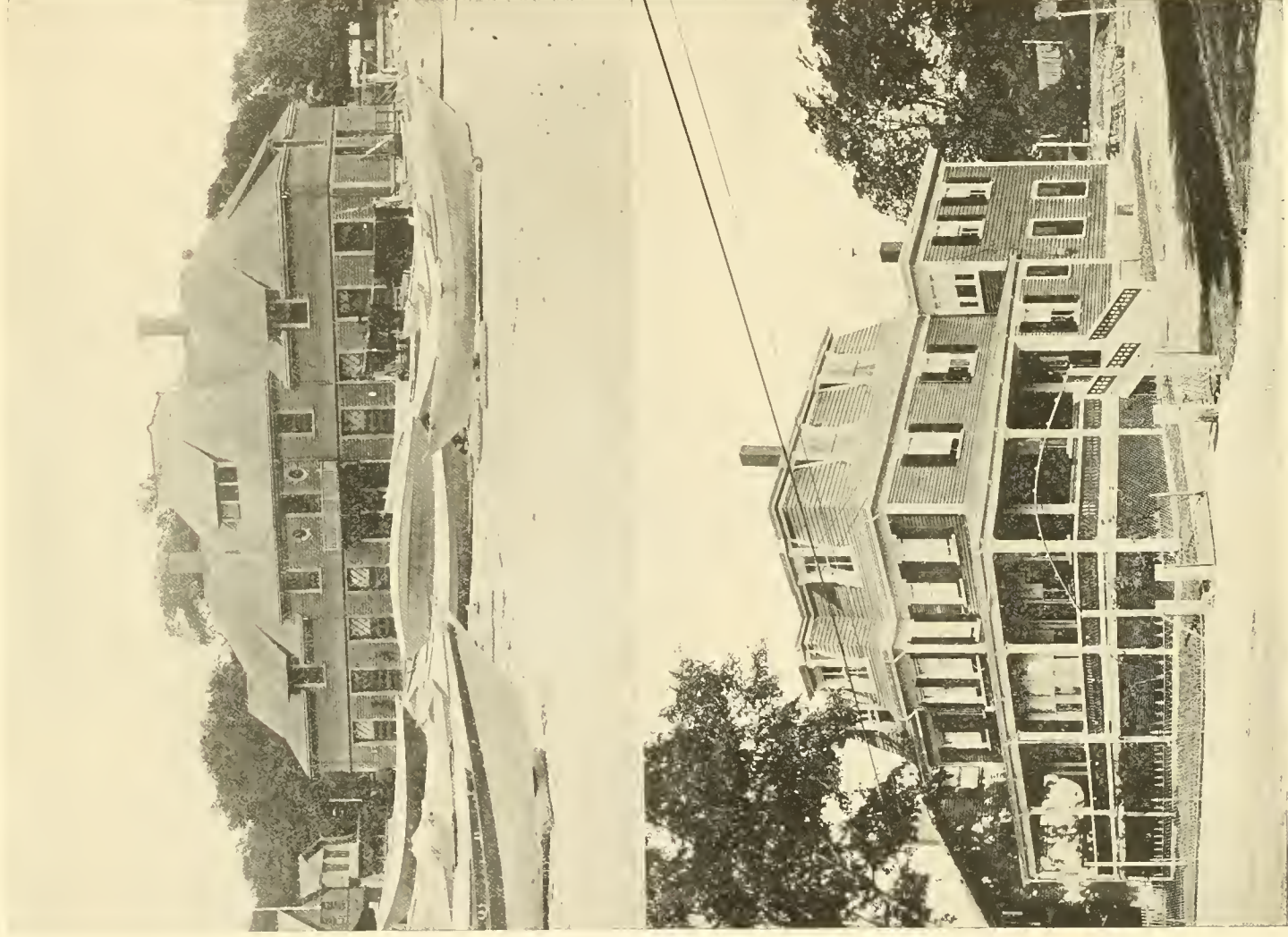


**BLANEY'S BEACH, SWAMPSCOTT**

The view above shows the Bathing Beach, and the Park at the left. In the background is the Town Fish House.

**THE OLD MUDGE MANSION, SWAMPSCOTT**

A fine old mansion house on Monument Avenue. The Mudge estate is the most beautiful landed property in Swampscott.



THE TOWN FISH HOUSE, SWAMPSCOTT  
A town institution. From here every morning the inshore fishermen start for the fishing grounds.

MANUFACTURED BY THE EASTMAN KODAK COMPANY



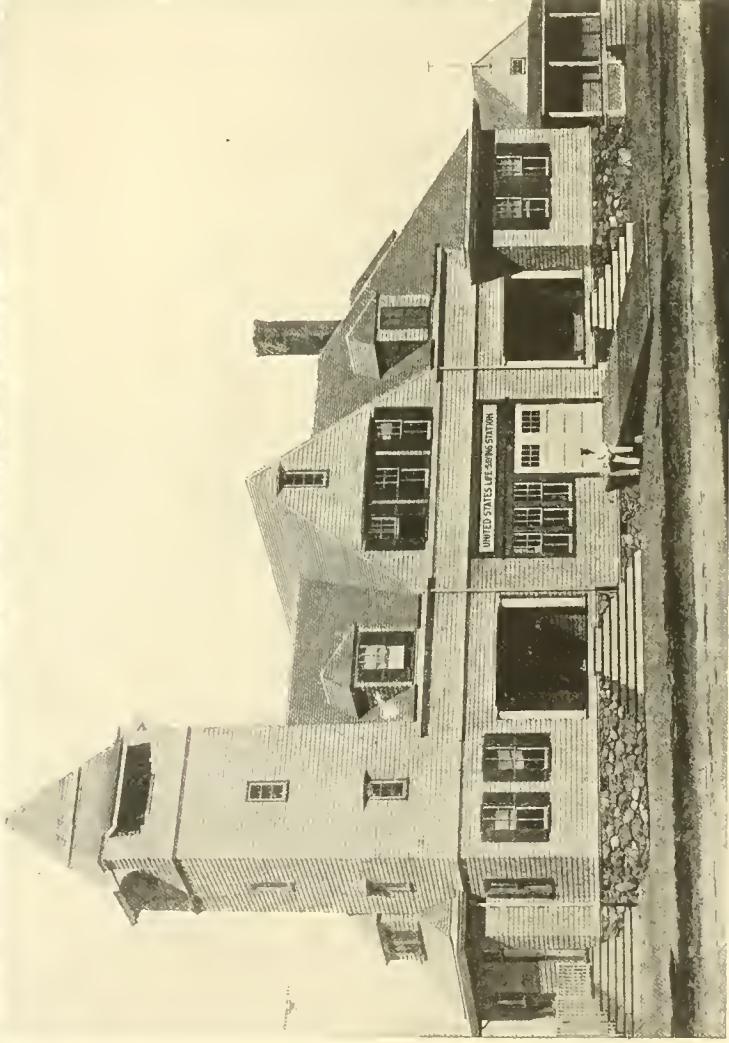


**KING'S BEACH, SWAMPSCOTT**  
One of the favorite beaches of Swampscott.



**PULPIT ROCK, NAHANT**  
A remarkable rock formation on the shore of the estate of Senator Henry Cabot Lodge.





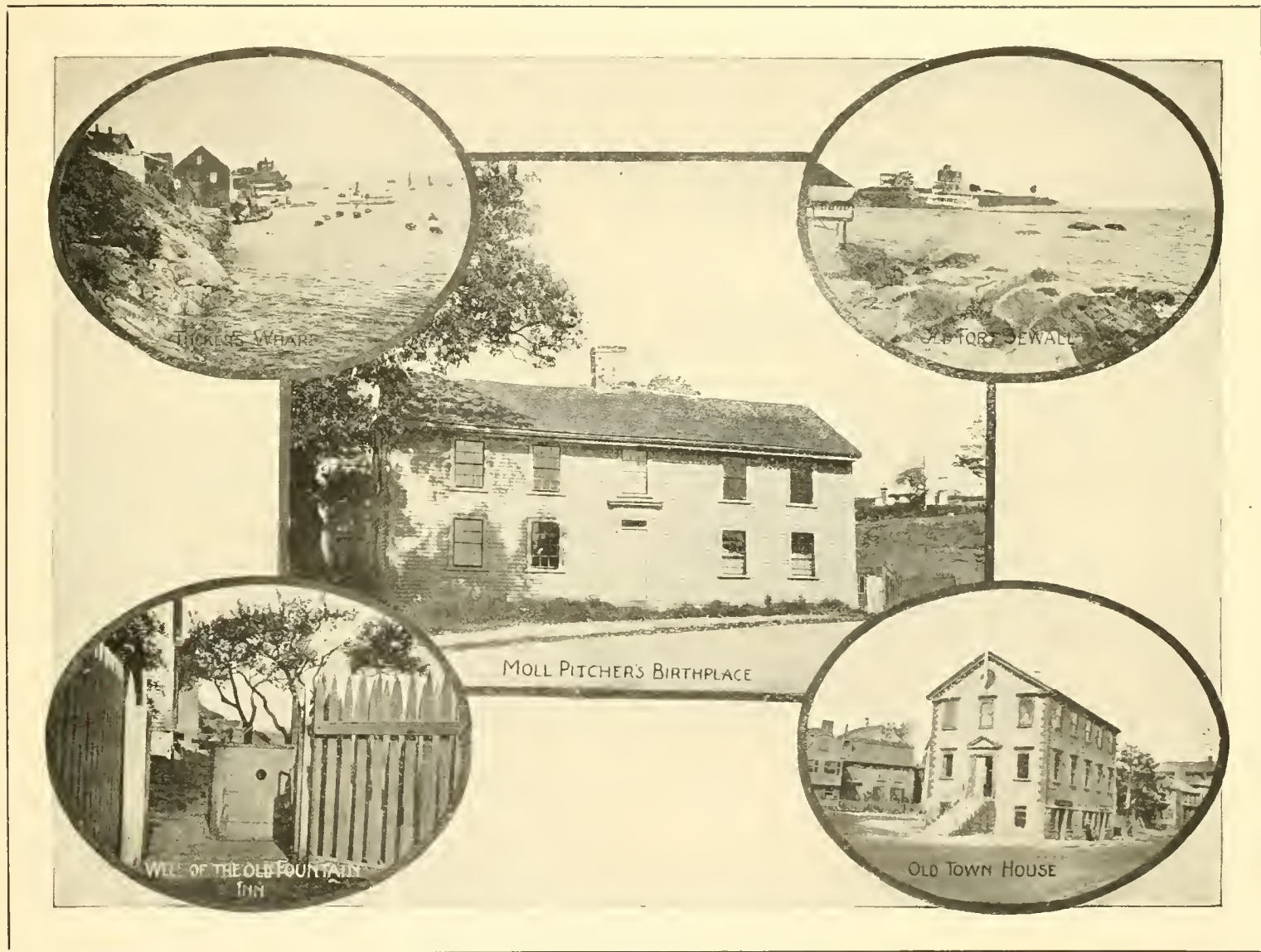
**ROCKS AND LIFE-SAVING STATION, NAHANT**  
The rocky promontory of Nahant was discovered by Agassiz to be geologically older than the continent of Europe. Wicked squalls of ancient rock project into the ocean ready to impale an unfortunate craft. The



EGG ROCK FROM NAHANT

Egg Rock is situated about one mile from the eastern shore of the curiously-shaped peninsula of Nahant. It lies at the entrance to Nahant Bay upon the shores of which border Lynn and Swampscott. The Rock was named from its peculiar and striking resemblance to a floating egg. Upon it the government maintains a signal station and a light-house. It is swept by fierce storms.





MARBLEHEAD

Many buildings and other places of historical interest may be found in this city. The Moll Pitcher birthplace and the Old Town House, built in 1727, are yet standing. The Well of the Old Fountain Inn, where Sir Henry Frankland first met the fair inn-servant, Agnes Surriage, whom he afterwards made Lady Frankland, is still pointed out. Tucker's Wharf has been a landing since 1642. Old Fort Sewall was built in 1742.





#### THE ROADS OF LYNN WOODS

Lynn Woods is again the property of the people as it was previous to division among the freeholders in 1706. The well-kept roads wind for miles through the forest and permit the traveler to enjoy many glorious views. In this public forest are the great Wolf Pits dug over two hundred years ago and the Pirates' Glen where Hiram Marble and his son wasted life and fortune in the search for buried treasure.



THE LYNN FLOATING BRIDGE

This interesting bridge structure on the old Boston turnpike was built in 1803. It was designed by its builders to depend upon the buoyancy of pontoons and, although over four hundred feet long has endured the stress of travel for more than a century. It has been repaired until but few of the original timbers remain.





#### THE RAGING SEA

The waters of the Atlantic are nowhere more beautiful in summer than along the North Shore. Pleasure craft of every description fill the harbors and the anchorages of the numerous yacht clubs. In the winter season this coast is the scene of fierce storms. It was from the North Shore that the lights of the ill-fated steamer "Portland" were seen for the last time during the big storm of November, 1898.



One copy del. to Cat. Div. .

JUN 22 1936

LIBRARY OF CONGRESS



0 012 608 676 3