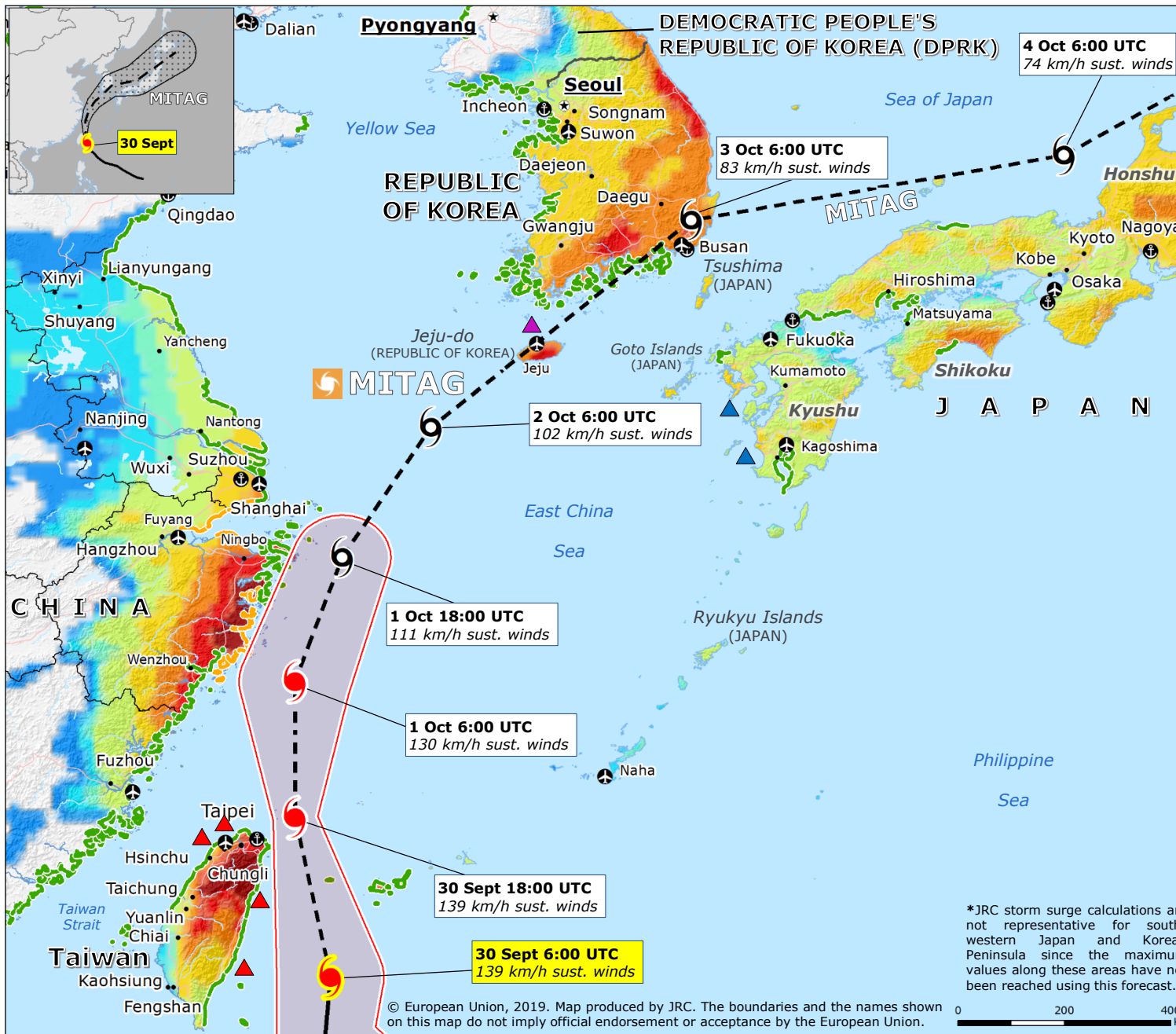
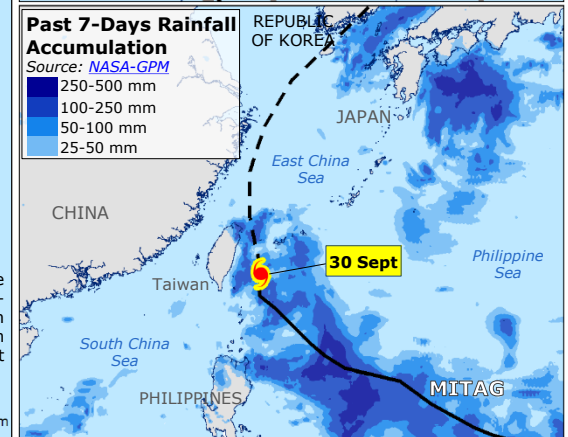
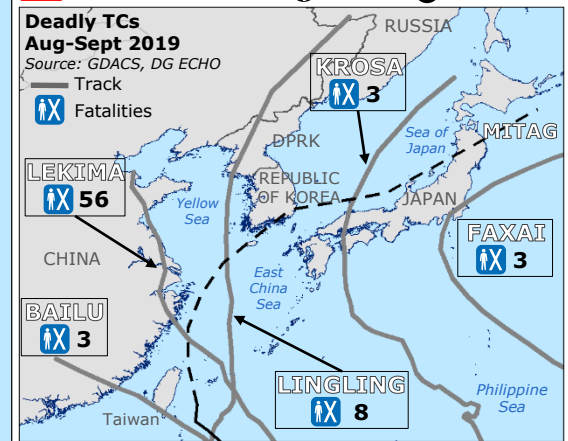


# East Asia | Tropical Cyclone MITAG



### TROPICAL CYCLONE (TC) 10-DAYS RAINFALL FORECAST

- Source: GDACS, JTWC
- Current position
  - Past track
  - - - Forecast track
  - ▨ TC Uncertainty cone
- Source: JRC GloFAS-ECMWF
- 10-15 mm
  - 15-20 mm
  - 20-25 mm
  - 25-50 mm
  - 50-100 mm
  - 100-150 mm
  - 150-200 mm
  - > 200 mm
- Intensity**
- 63-118 km/h (Tropical Storm)
  - > 118 km/h (Typhoon)
- Storm surge\***
- Source: JRC, ECMWF
- 0.2 - 1 m
  - 1 - 1.7 m
- Wind buffer**
- > 118 Km/h
- ▲ Heavy rain warning (Source: KMA)  
▲ Typhoon warning (Source: CWB)  
▲ Storm surge warning (Source: JMA)  
🌀 GDACS Orange Alert  
+ Main Port ✈ Main Airport



\*JRC storm surge calculations are not representative for south-western Japan and Korean Peninsula since the maximum values along these areas have not been reached using this forecast.

© European Union, 2019. Map produced by JRC. The boundaries and the names shown on this map do not imply official endorsement or acceptance by the European Union.

