

# Uganda | Ebola Virus Disease (EVD) outbreak



**DG ECHO FIRST RESPONSE**

- Deployment of a health expert from ECHO regional office.
- **EUR 200 000** support to the DREF.

**SUMMARY OF CASES AND DEATHS**  
 Source: Uganda Ministry of Health, as of 2 October

CUMULATIVE EVD CASES **61**

- Probable **20**
- Confirmed **41**

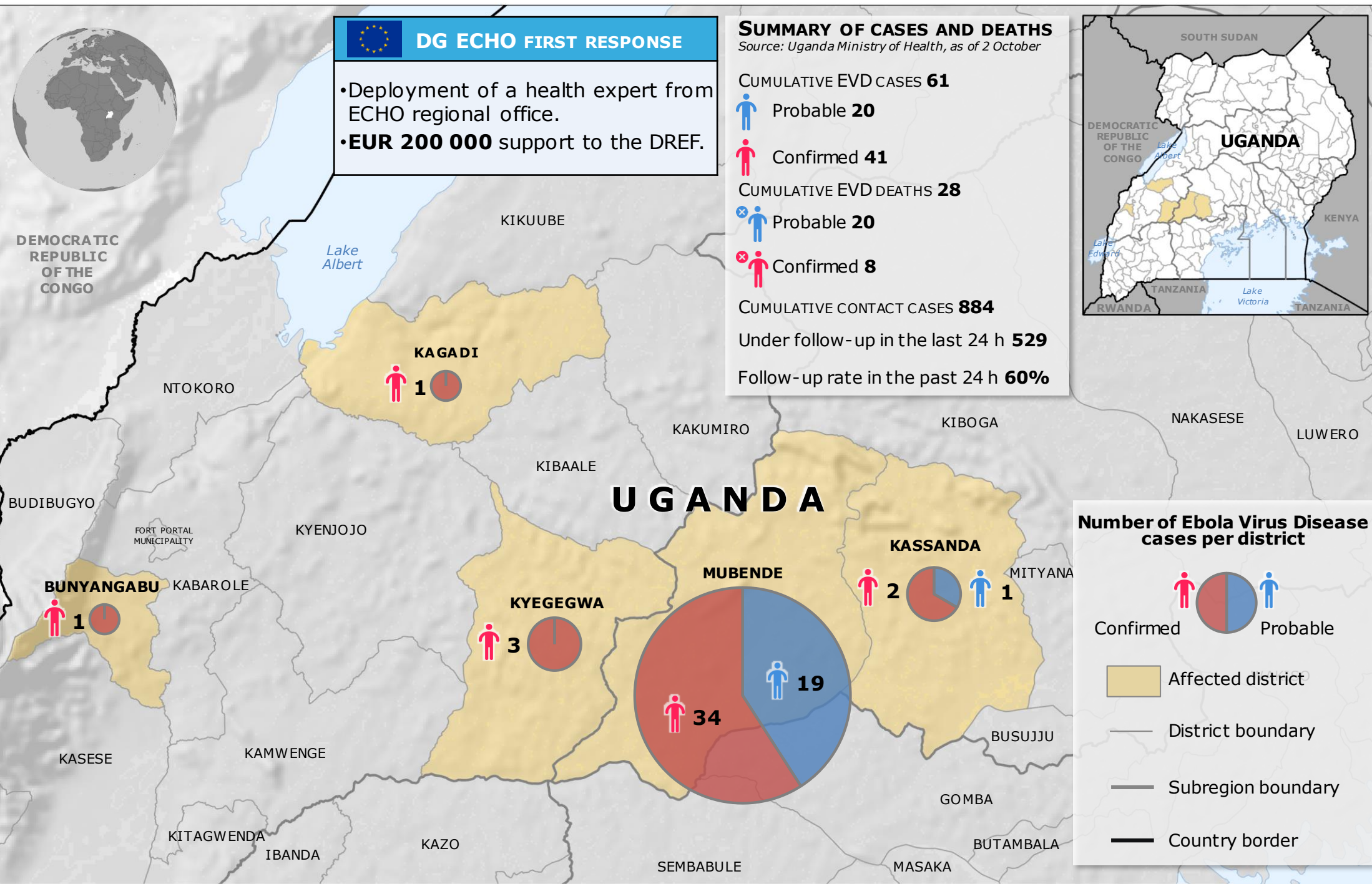
CUMULATIVE EVD DEATHS **28**

- Probable **20**
- Confirmed **8**

CUMULATIVE CONTACT CASES **884**

Under follow-up in the last 24 h **529**

Follow-up rate in the past 24 h **60%**



**Number of Ebola Virus Disease cases per district**

Confirmed (Red icon) Probable (Blue icon)

Affected district (Yellow background)

District boundary (Thin grey line)

Subregion boundary (Thick grey line)

Country border (Thick black line)