

14.4

115

14.4-115

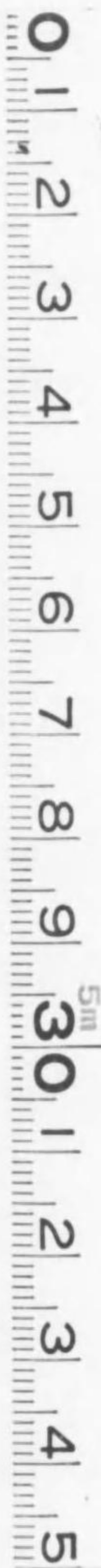


•1200600129087•

震災豫防調査會報告第二十五號附錄圖

第十七號

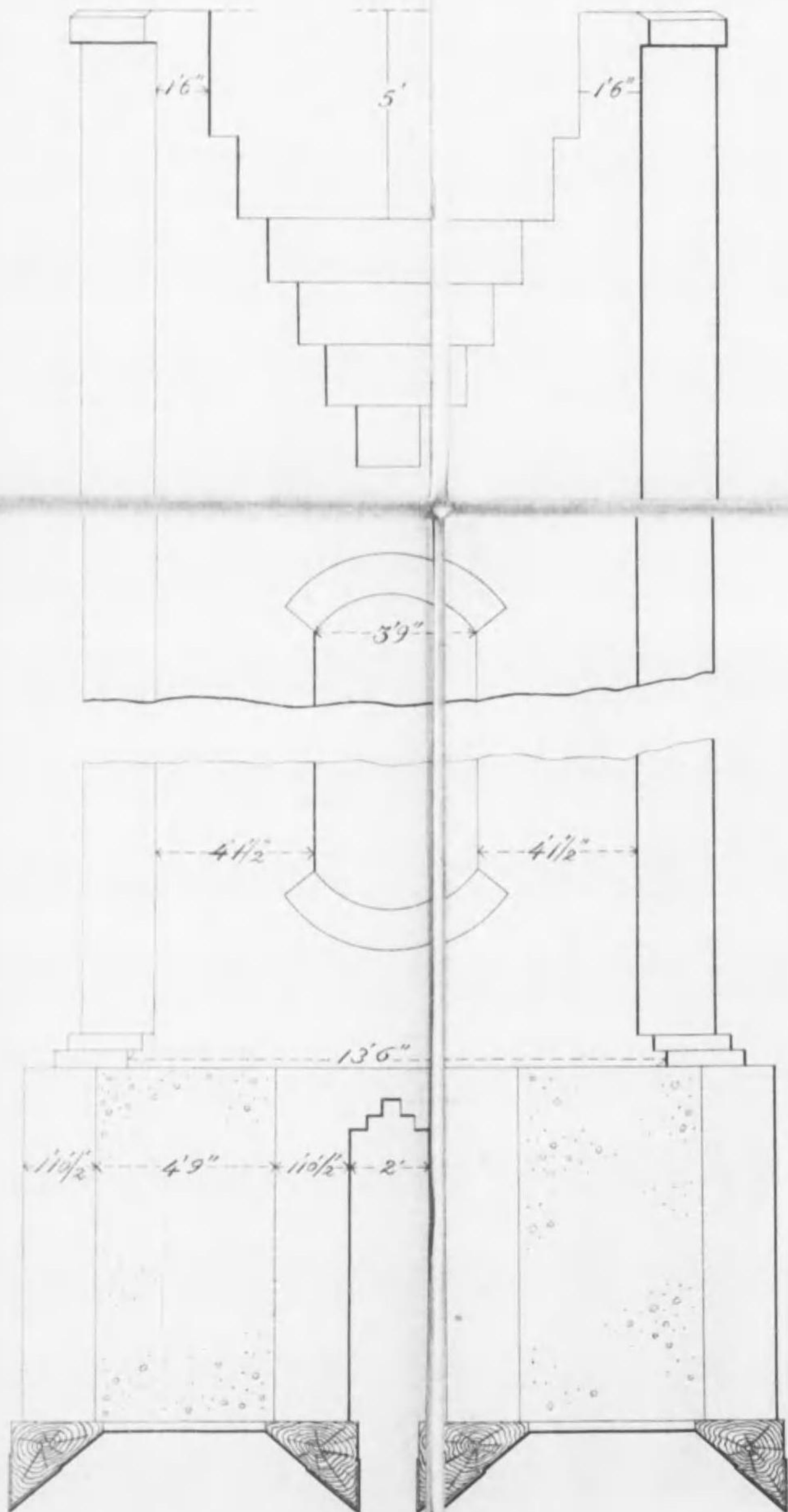
圖書圖商



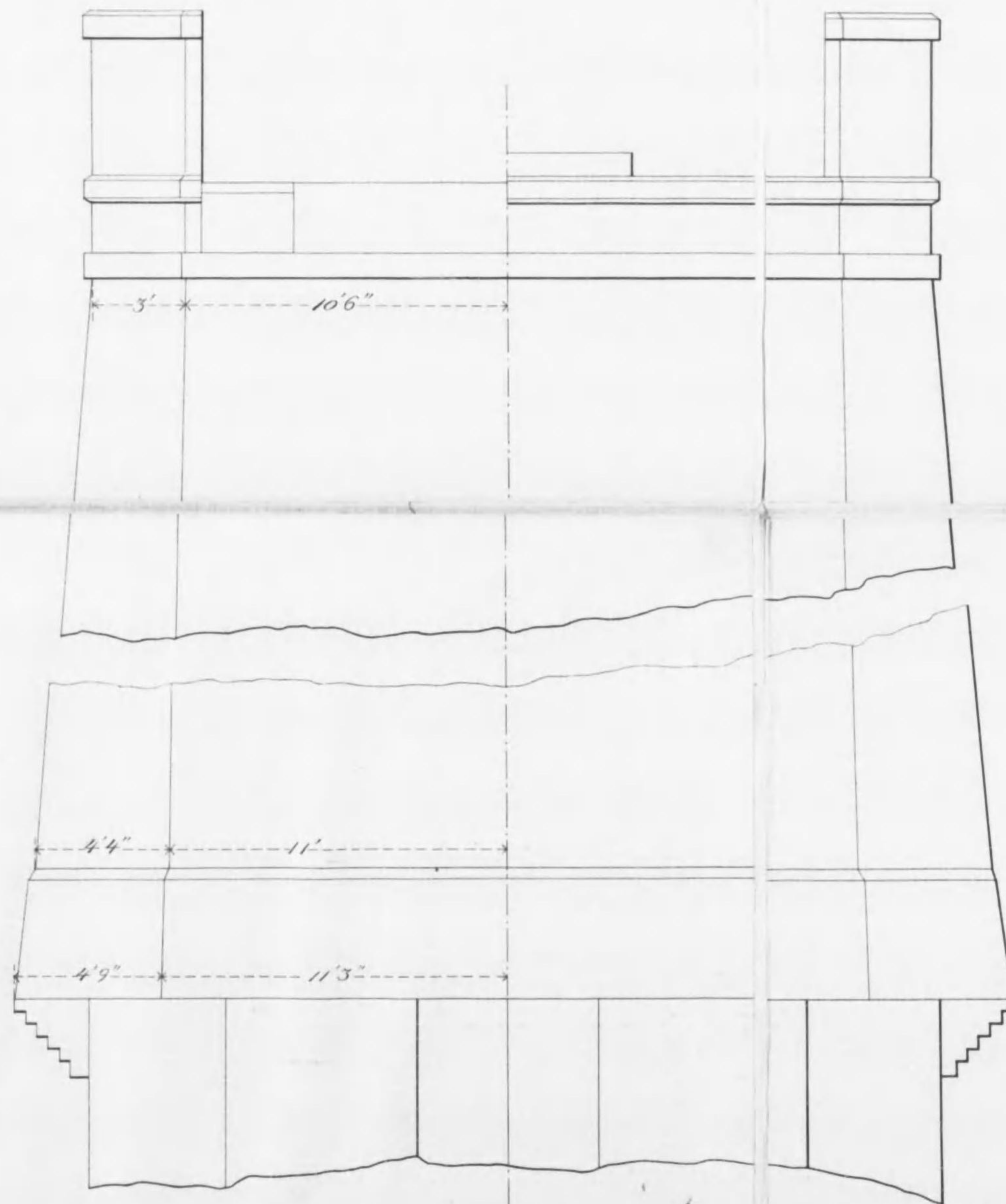
始



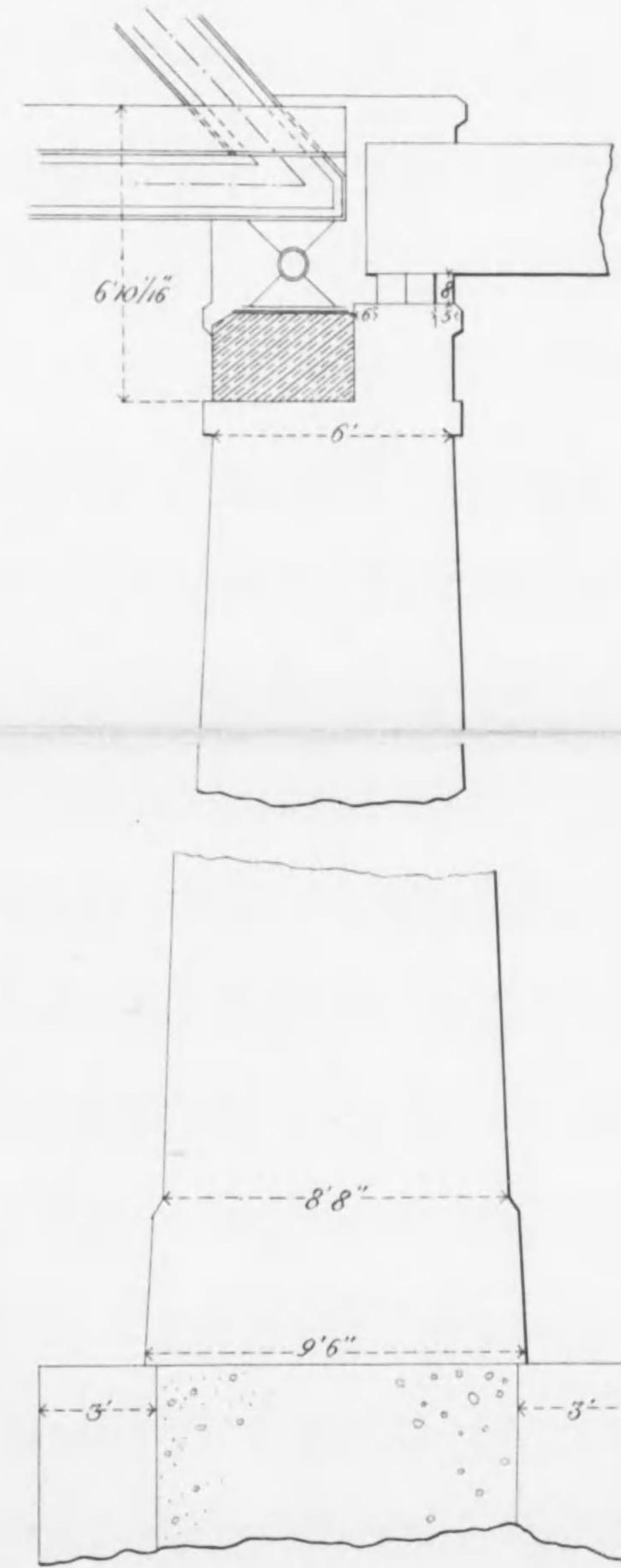
Section
through AA



Front View of Pier



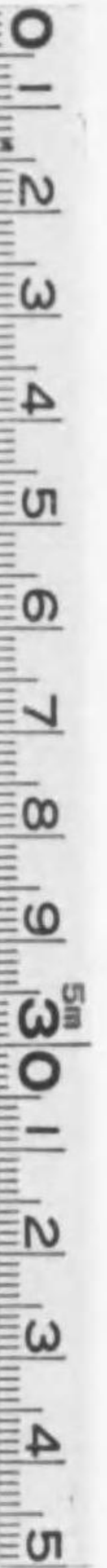
Long^t Section



Plan of Pier only

over Coping

under Coping



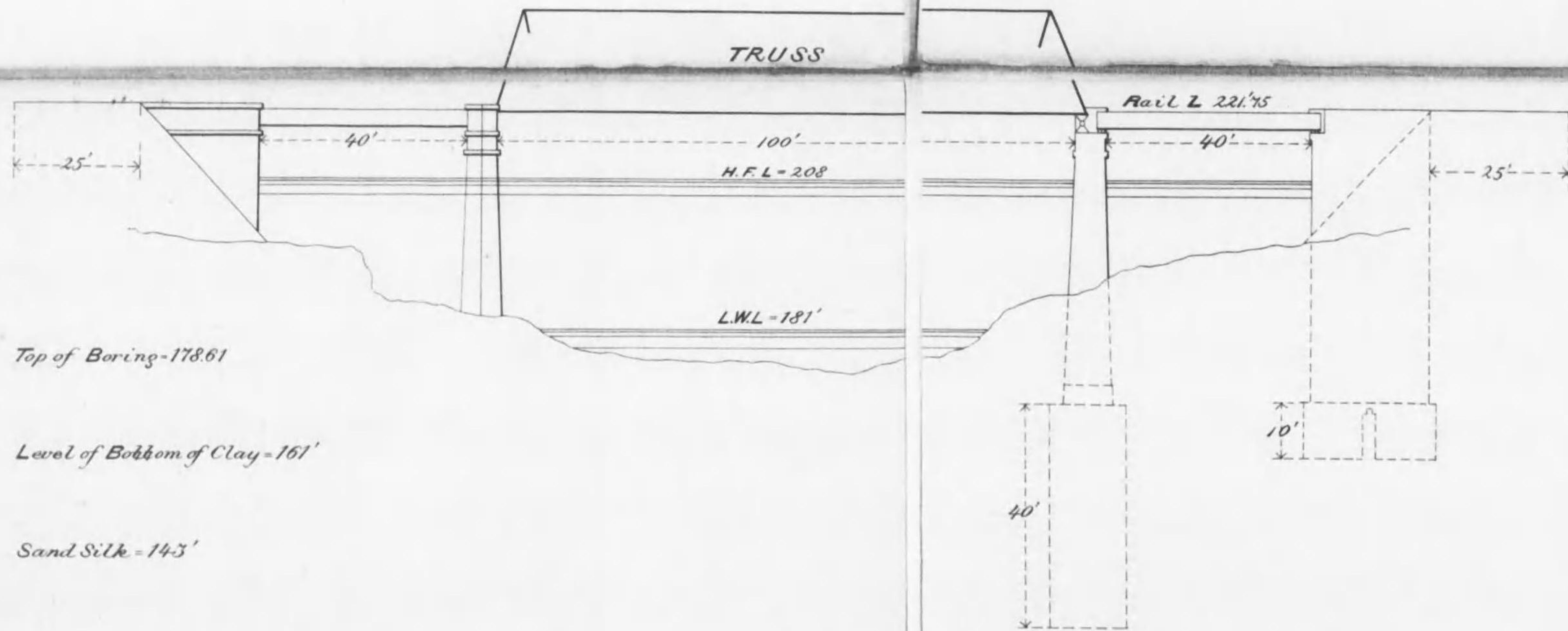
TITAMARI BRIDGE

ASSAM

INDIA

第拾七號

General Elevation

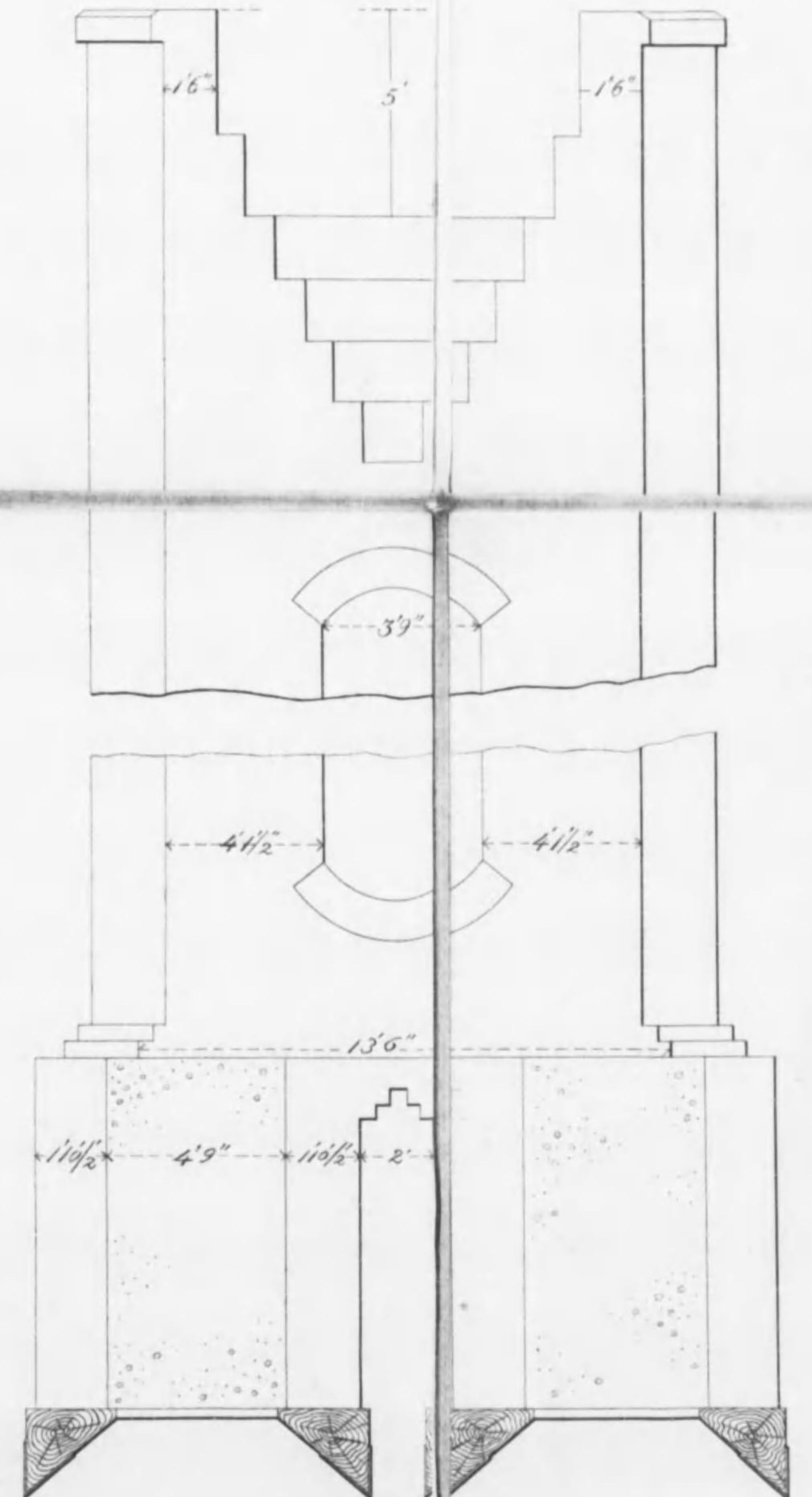


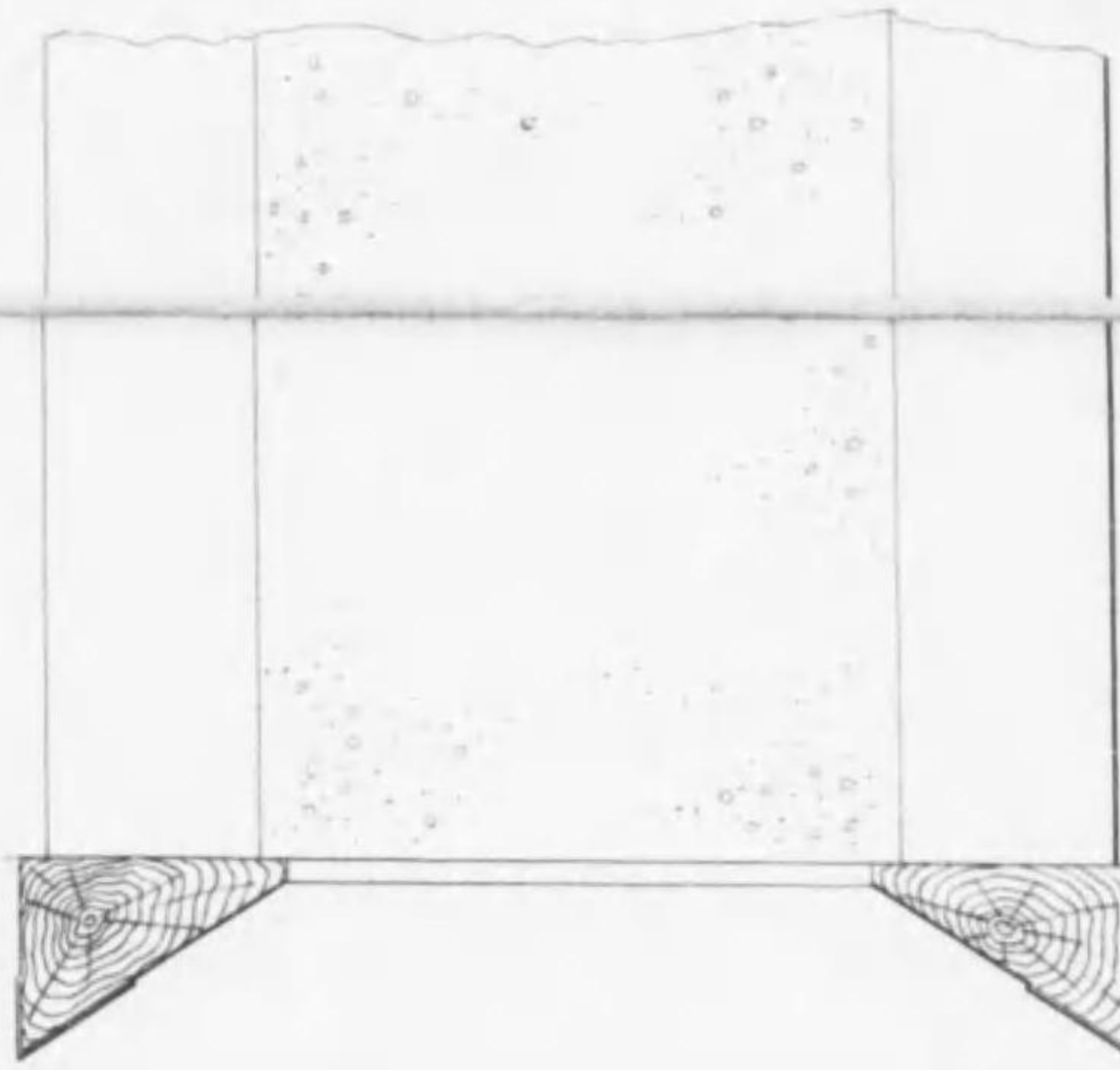
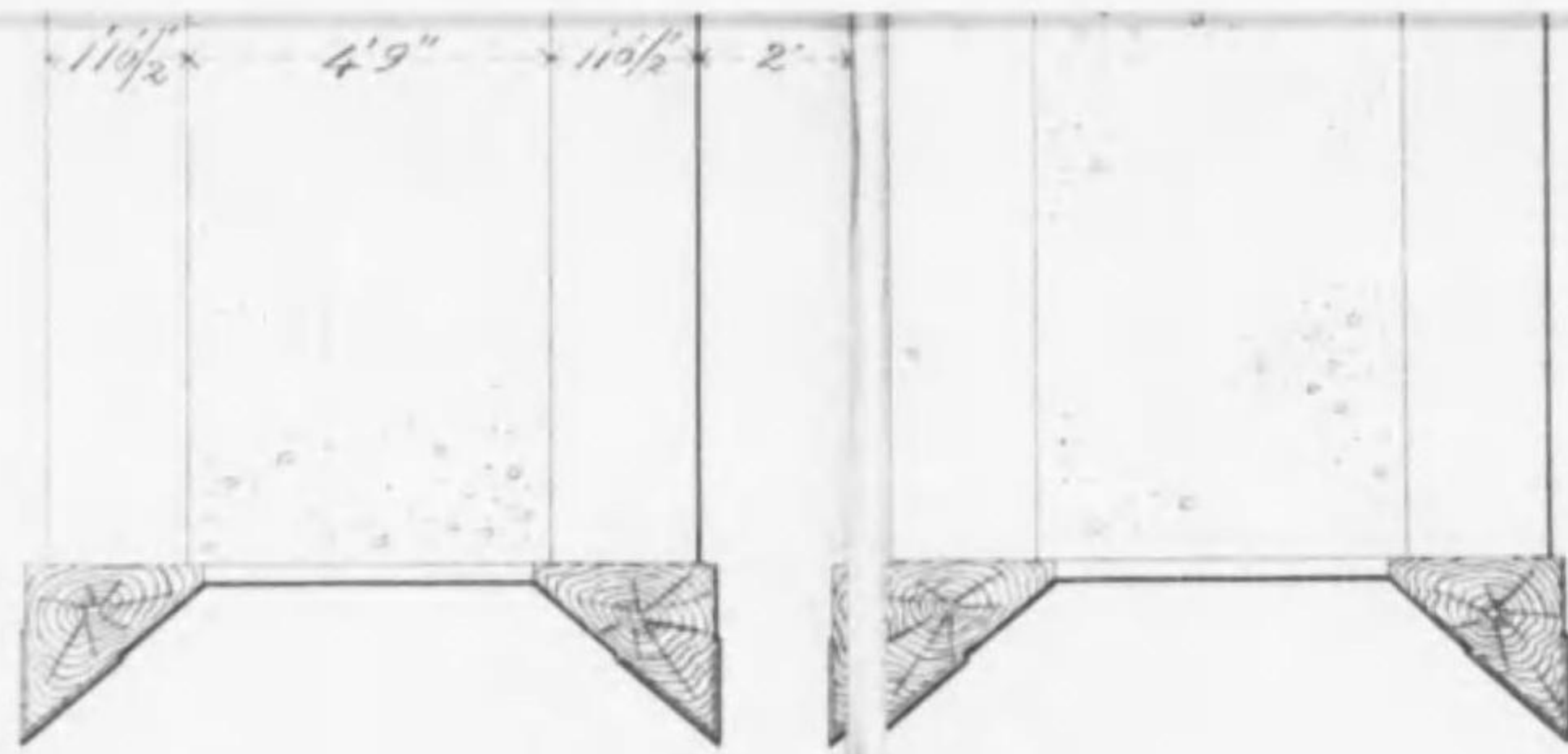
Front View
of Abutment

Side View
of Abutment

Section
through BB

Section
through AA



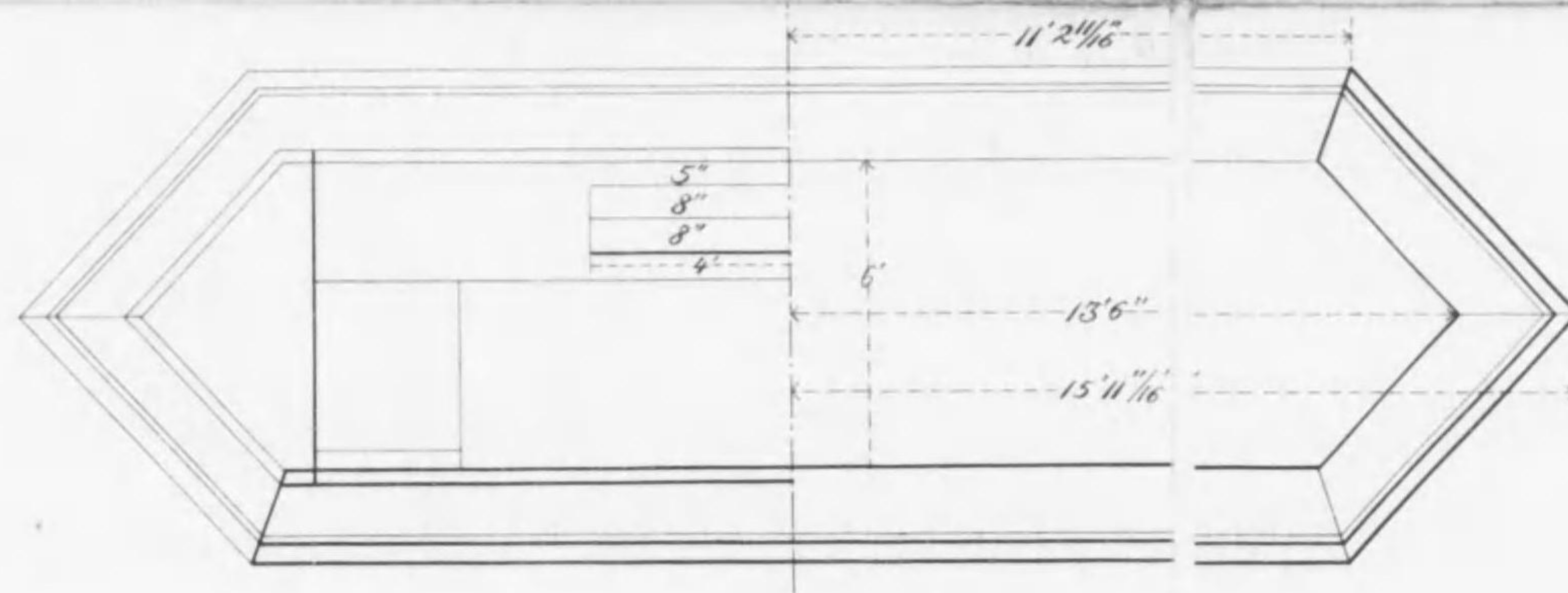
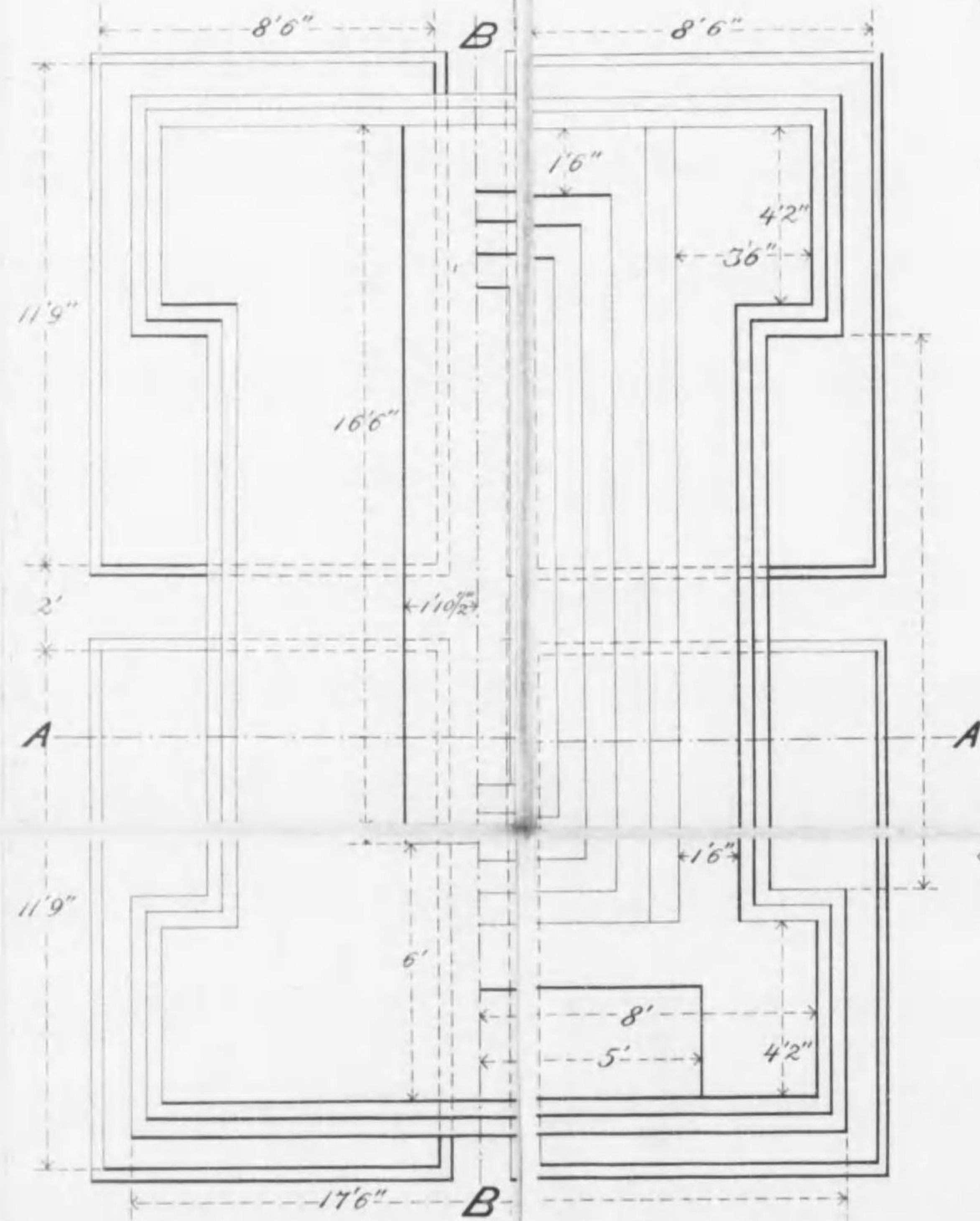


Plan of Pier only

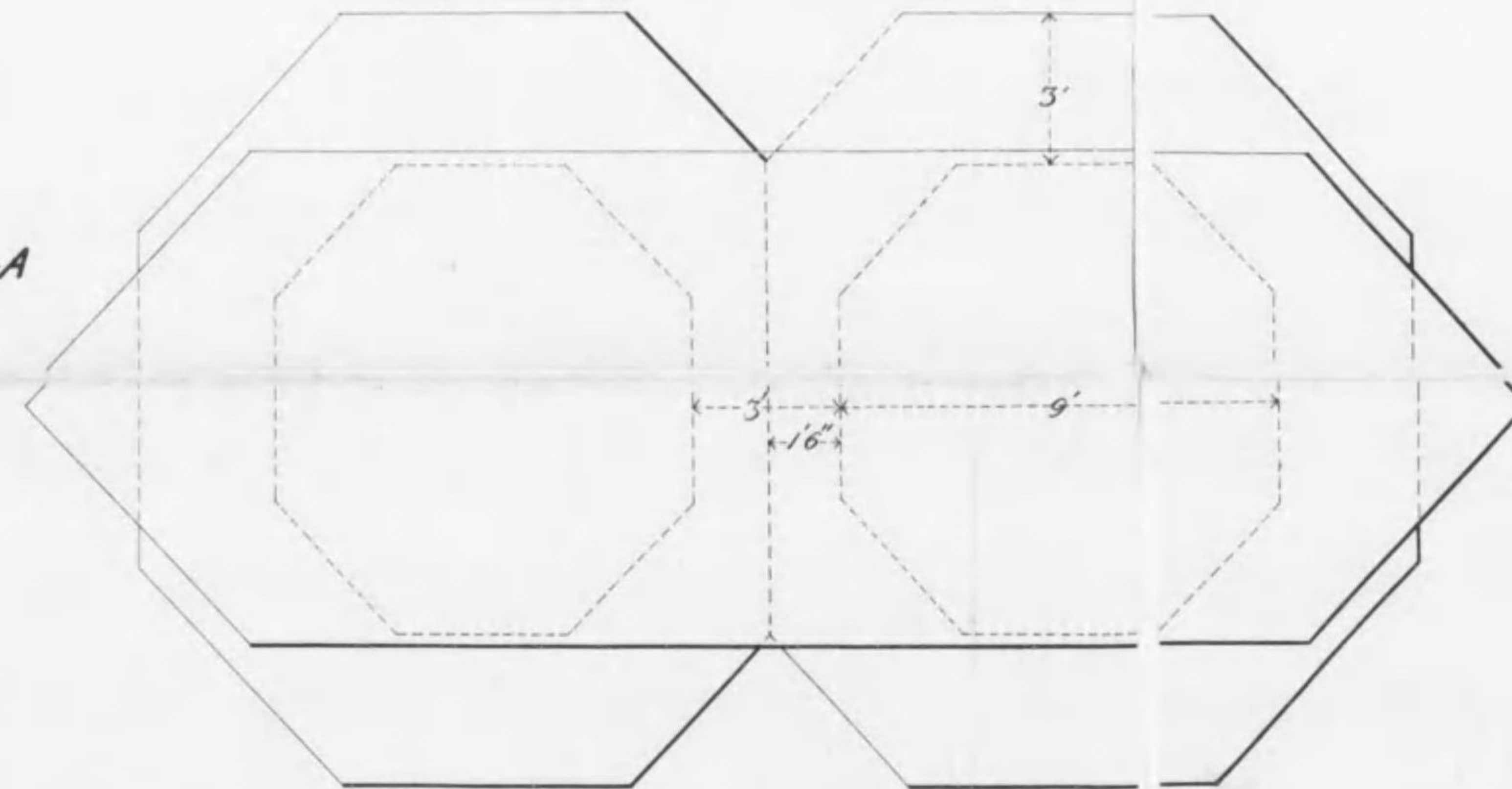
over Coping

under Coping

Plan of Abutment



Plan of Pier and Well



SCALE

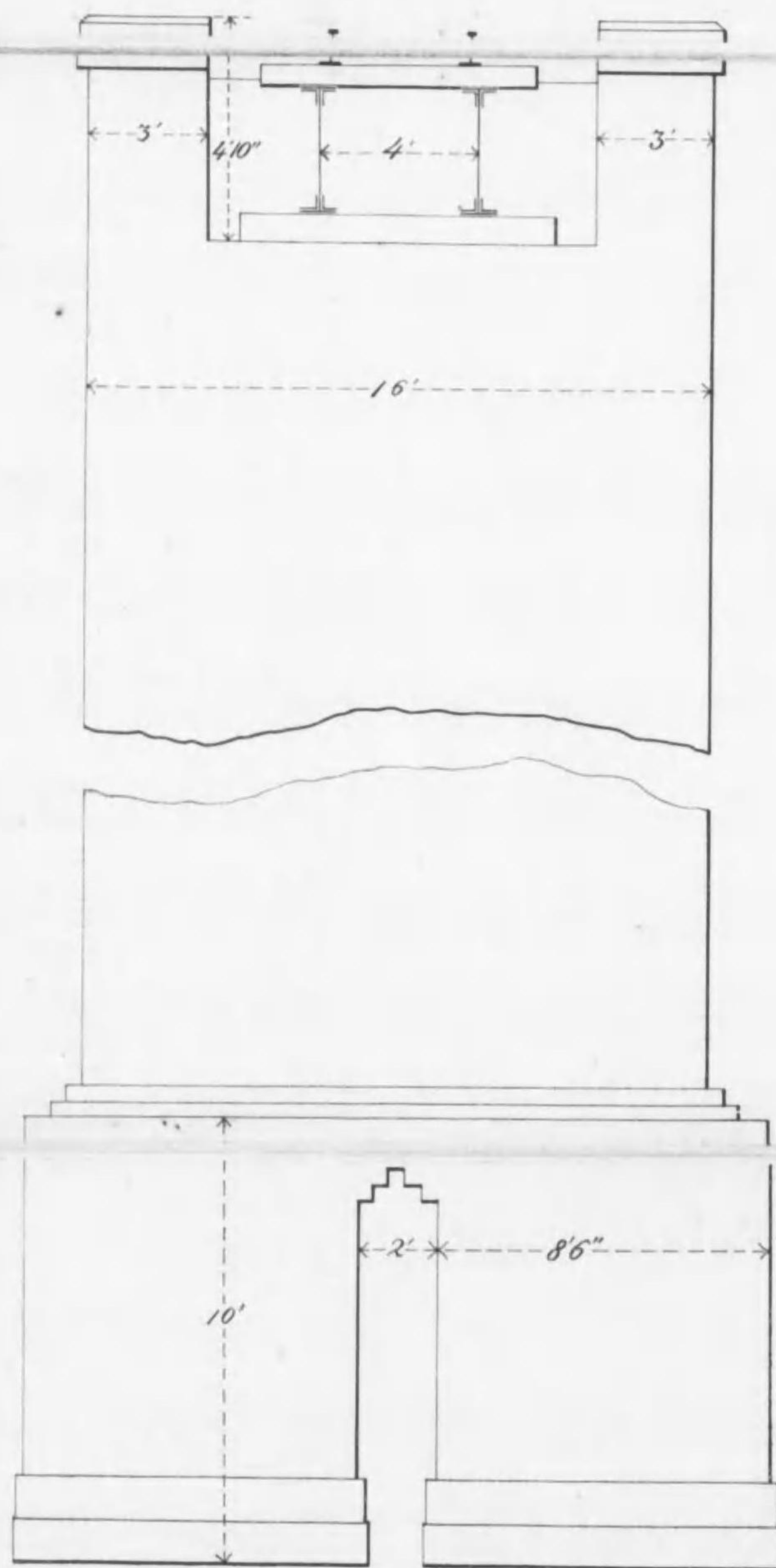
for General Elevation

$1\text{ in} = 24\text{ Ft}$

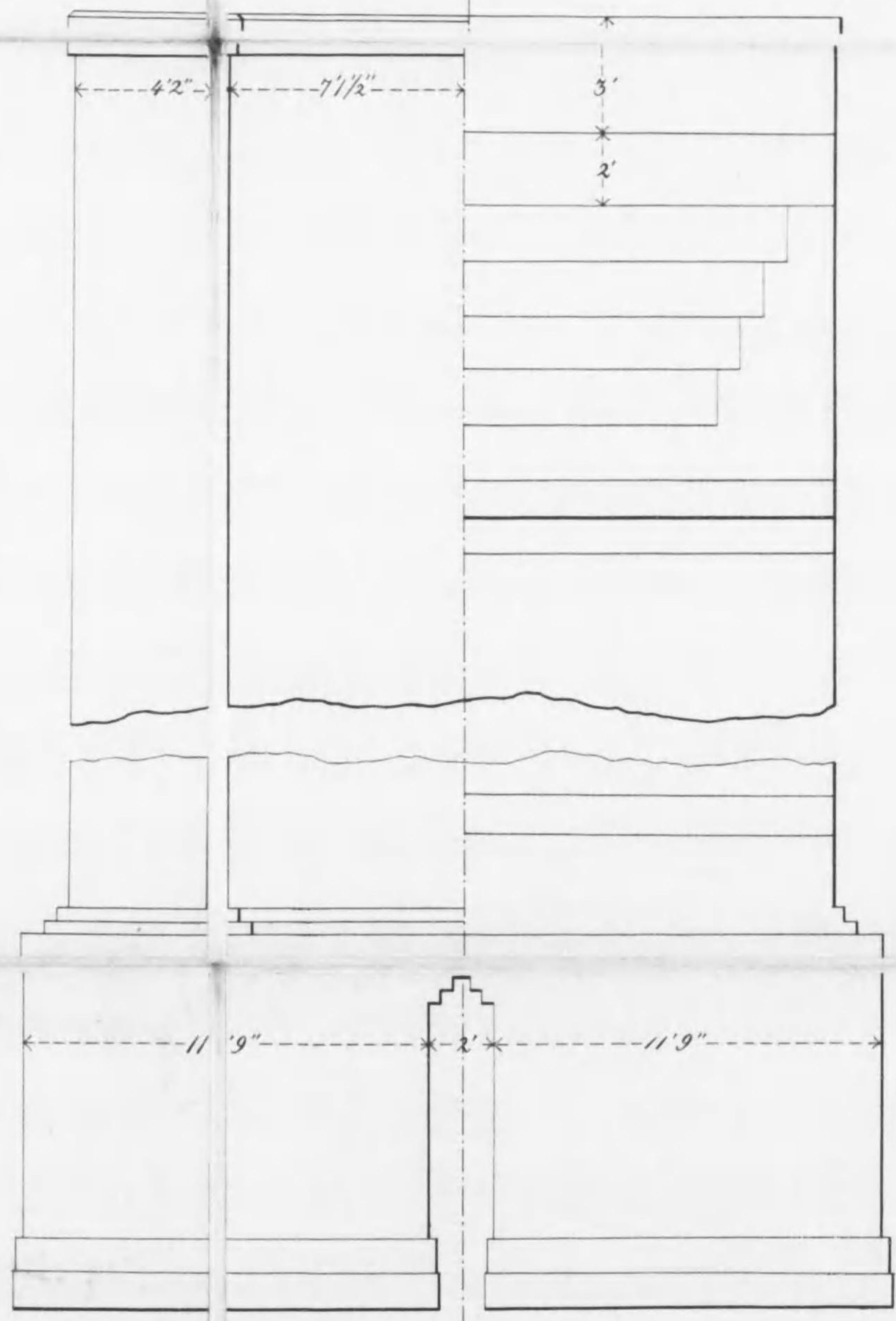
for Details

$1\text{ in} = 4\text{ Ft}$

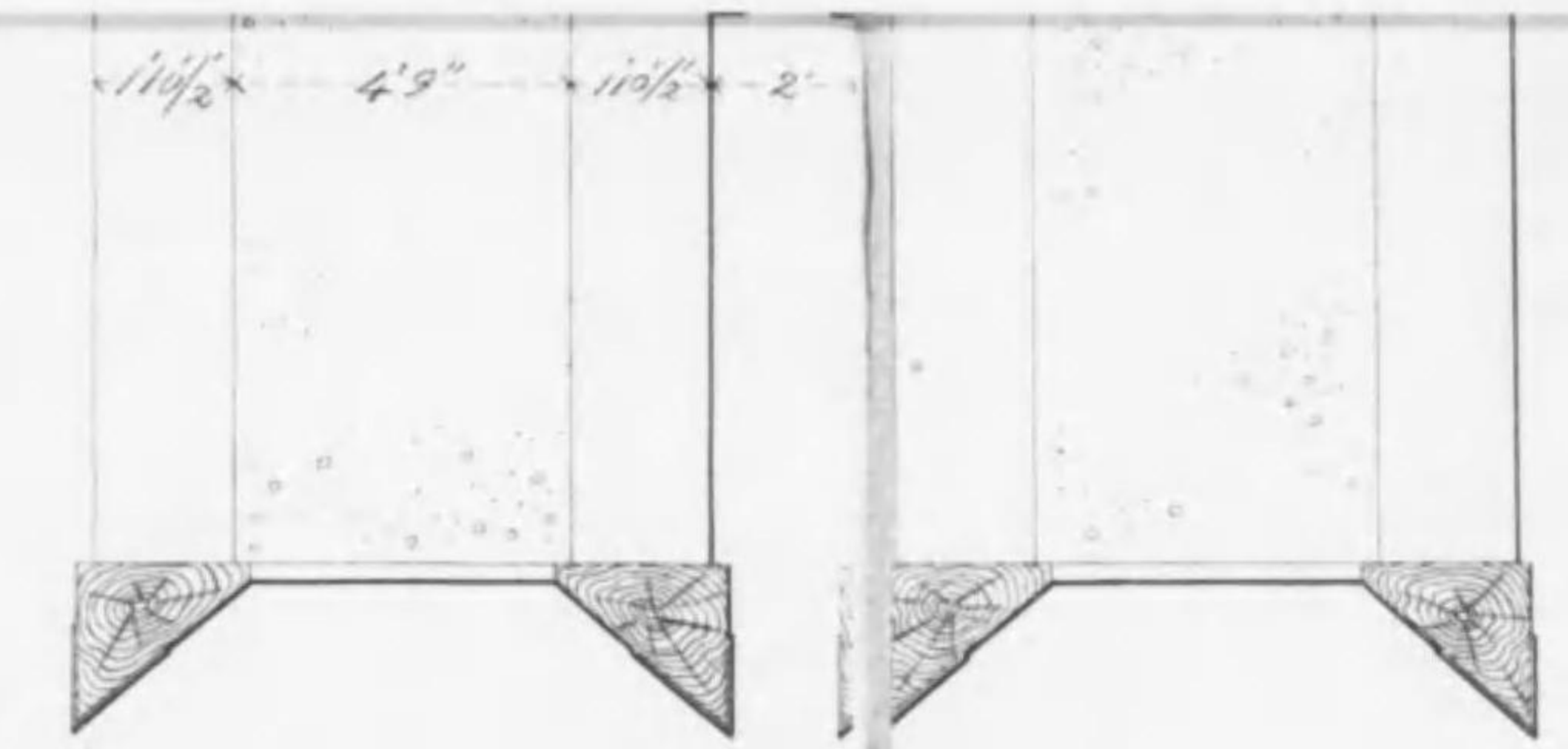
Front View
of Abutment



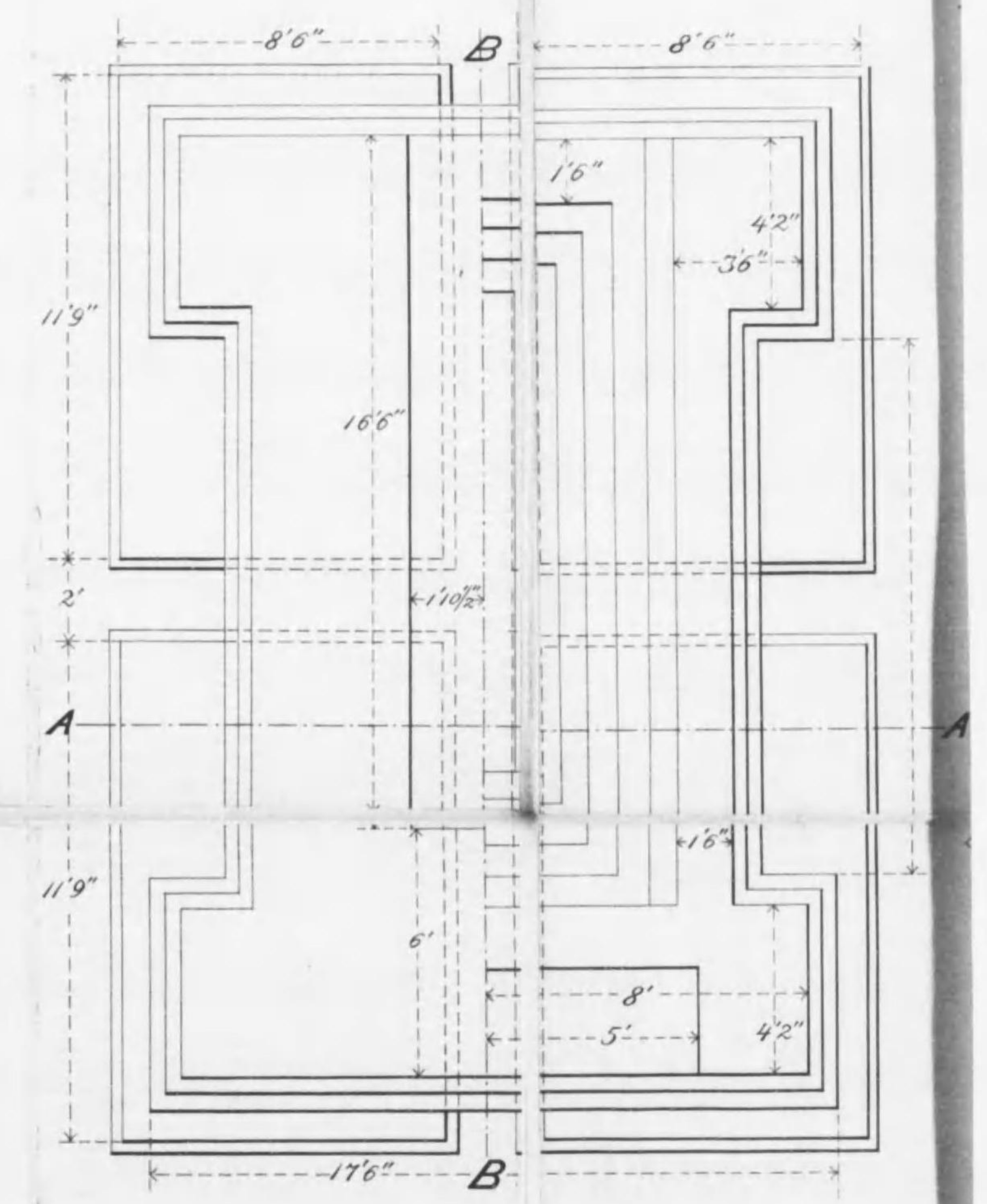
Side View
of Abutment



Section
through BB



Plan of Abutment



終