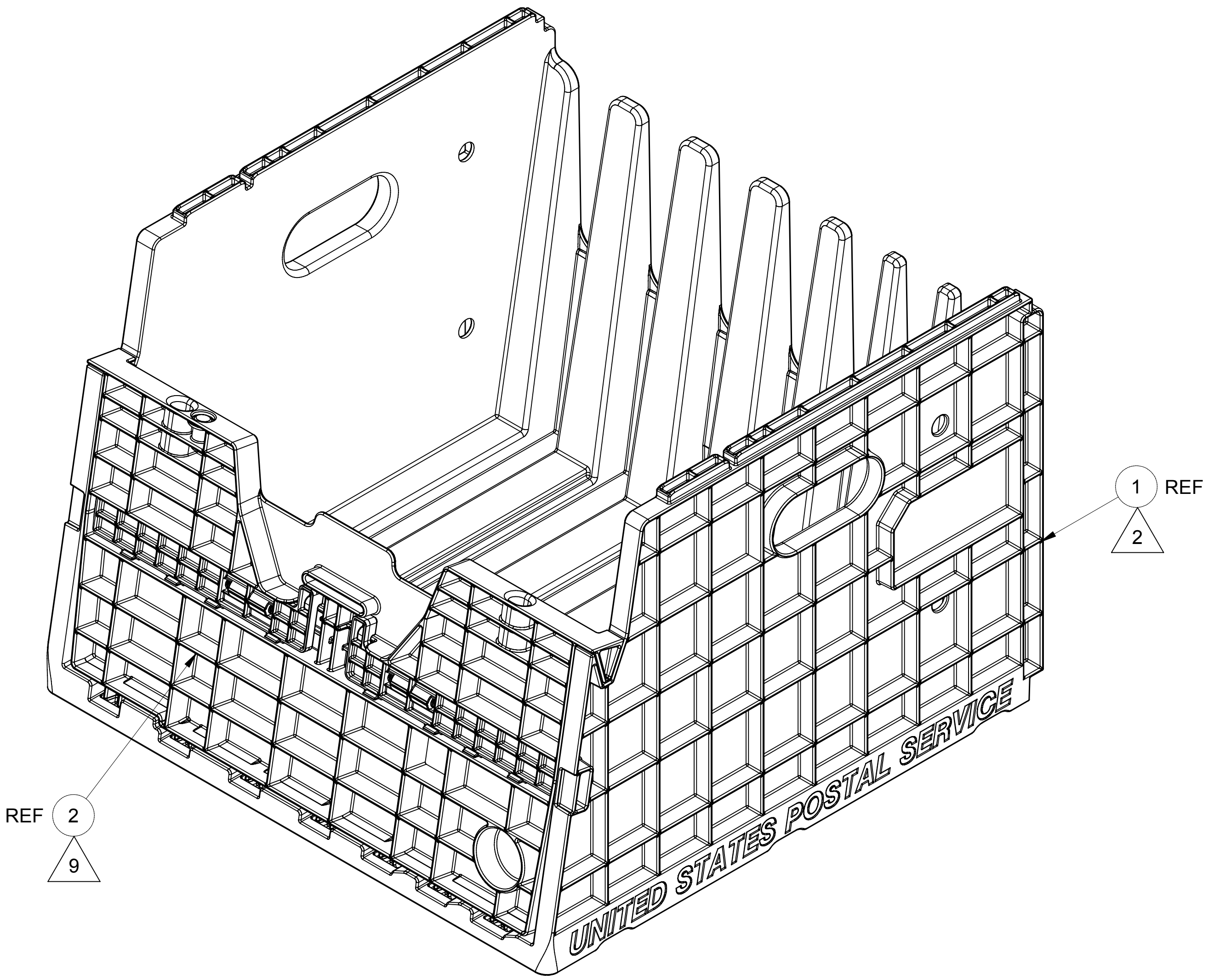


DWG NO. 152K096		SH 1		
REVISIONS				
ZONE	REV	DESCRIPTION	DATE	APPROVED
	03	PRELIMINARY RELEASE TO PRODUCTION PER RN L41F7	08/02/04	MRE
	04	REVISION PER RN L72U1	08/05/08	MRE
	05	REVISION PER RN L90D2	08/08/20	MRE
	06	REVISION PER RN L16L1	08/08/20	MRE
	07	REVISION PER RN M21N7	08/10/07	MRE

NOTES: UNLESS OTHERWISE SPECIFIED

- APPROVED SOURCE OF SUPPLY:
ORBIS CORPORATION
1055 CORPORATE CENTER DR
OCONOMOWOC, WI 53066-4829
CAGE CODE: 1W6J1
PHONE NO. 262-560-5337
- MATERIAL: POLYPROPYLENE, 20% TALC-FILLED, INJECTION MOLDING GRADE.
DENSITY: 1.0-1.1 g/cm³
IZOD IMPACT ≥ 0.7 FT-LB/IN
TENSILE YIELD STRESS: >3900 PSI
FLEXURAL MODULUS: ≥ 305,000 PSI
COLOR: LIGHT GREEN PANTONE 333C
- DIMENSIONS SHOWN ARE TO APEX.
- QUALITY ASSURANCE PROVISIONS SHALL BE IN ACCORDANCE WITH THE SUPPLIER'S STANDARD (COMMERCIAL) PRACTICE AS REQUIRED TO VERIFY THAT THE ITEM MEETS THE REQUIREMENTS SPECIFIED HEREIN.
- SUPPLIER TO PROVIDE CERTIFICATE OF ANALYSIS CERTIFYING THAT PRODUCTION TRAYS MEET THE REQUIREMENTS FOR IZOD IMPACT AND FLEXURAL MODULUS, AS STATED IN NOTE 2 FOR ITEM 1. SUPPLIER TO PROVIDE CERTIFICATE OF ANALYSIS CERTIFYING THAT PRODUCTION TRAYS MEET THE REQUIREMENTS FOR TENSILE YIELD STRESS AND FLEXURAL MODULUS, AS STATED IN NOTE 9 FOR ITEM 2. SUPPLIER TO PROVIDE MANUFACTURER MATERIAL SPECIFICATION DATA SHEET(S) INDICATING CONFORMANCE TO ALL OTHER MATERIAL REQUIREMENTS.
- BAG OR TAG AND IDENTIFY WITH PART NUMBER. MARKING MUST MEET THE PERMANENCY AND LEGIBILITY REQUIREMENTS AS SPECIFIED IN MIL-STD-130. PART NO.: 97942ASSY152K096G01
- DIMENSIONS SHOWN ARE TO ROOT OF PLANAR RIB FACE.
- DIMENSIONS SHOWN ARE TO TIP OF PLANAR RIB FACE.
- MATERIAL: ABS (ACRYLONITRILE BUTADIENE STYRENE) RESIN, INJECTION MOLDING GRADE.
DENSITY: 1.03-1.06 g/cm³
TENSILE YIELD STRESS: >4800 PSI
NOTCHED IZOD IMPACT AT 73° F: 3.0-5.5 FT-LB/IN
FLEXURAL MODULUS: ≥ 310,000 PSI
COLOR: LIGHT GREEN PANTONE 333C

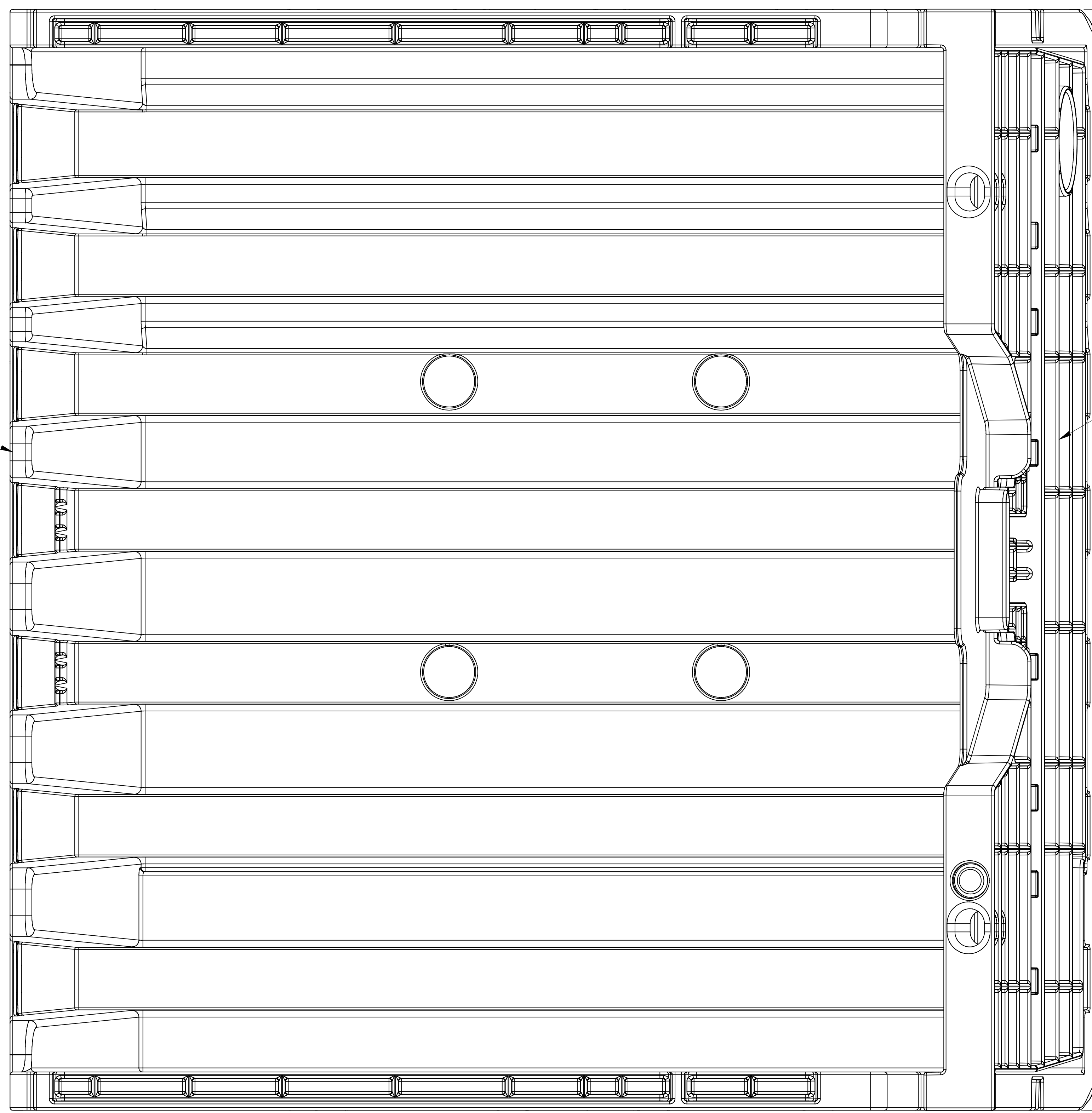


PROCUREMENT CONTROL DRAWING
SEE SEPARATE PARTS LIST 152K096G01

COMPUTER GENERATED DOCUMENT
MANUAL CHANGES NOT ALLOWED

UNLESS OTHERWISE SPECIFIED ALL SURFACES CAST ✓ MACH ✓ INTERPRET SURFACE TEXTURE DESIGNATIONS IAW ASME Y14.36M-1996		UNLESS OTHERWISE SPECIFIED DIMENSIONS ARE IN MILLIMETERS TOLERANCES ON 0 PLCS 1 PLC ANGLE ± ± 0.5 ± 1°		CONTR NO. 3AAFLT-07-B-0004		NORTHROP GRUMMAN Electronic Systems	
DIMENSIONAL LIMITS APPLY AFTER FINISH.		INTERPRET DIMENSIONS AND TOLERANCES PER ASME Y14.5M-1994 DO NOT SCALE DRAWING		DRAFTER G. BROCKMEYER 07/08/22		TRAY, AUTOMATION COMPATIBLE (ACT), FSS	
THIRD ANGLE PROJECTION		INTERPRET DRAWING IAW ASME Y14.100M-2004		CHECKER D. FERGUSON 08/02/04			
				APPROVED M. EDELEN 08/02/04			
				PROJ. ENGR. J. LINDHURST 08/02/05 MFG. APPR. J. BIDLACK PROGRAM APPROVAL T. ANDREYCHEK 08/02/07			
SIZE A1		CAGE CODE 97942		DWG NO. 152K096		REV 07	
SCALE 1:1				SHEET 1 OF 10			

SHEET 4
ZONE B9



4.5AB
3.5

2

411.5

3A
3.5
B

404.9 ± 1

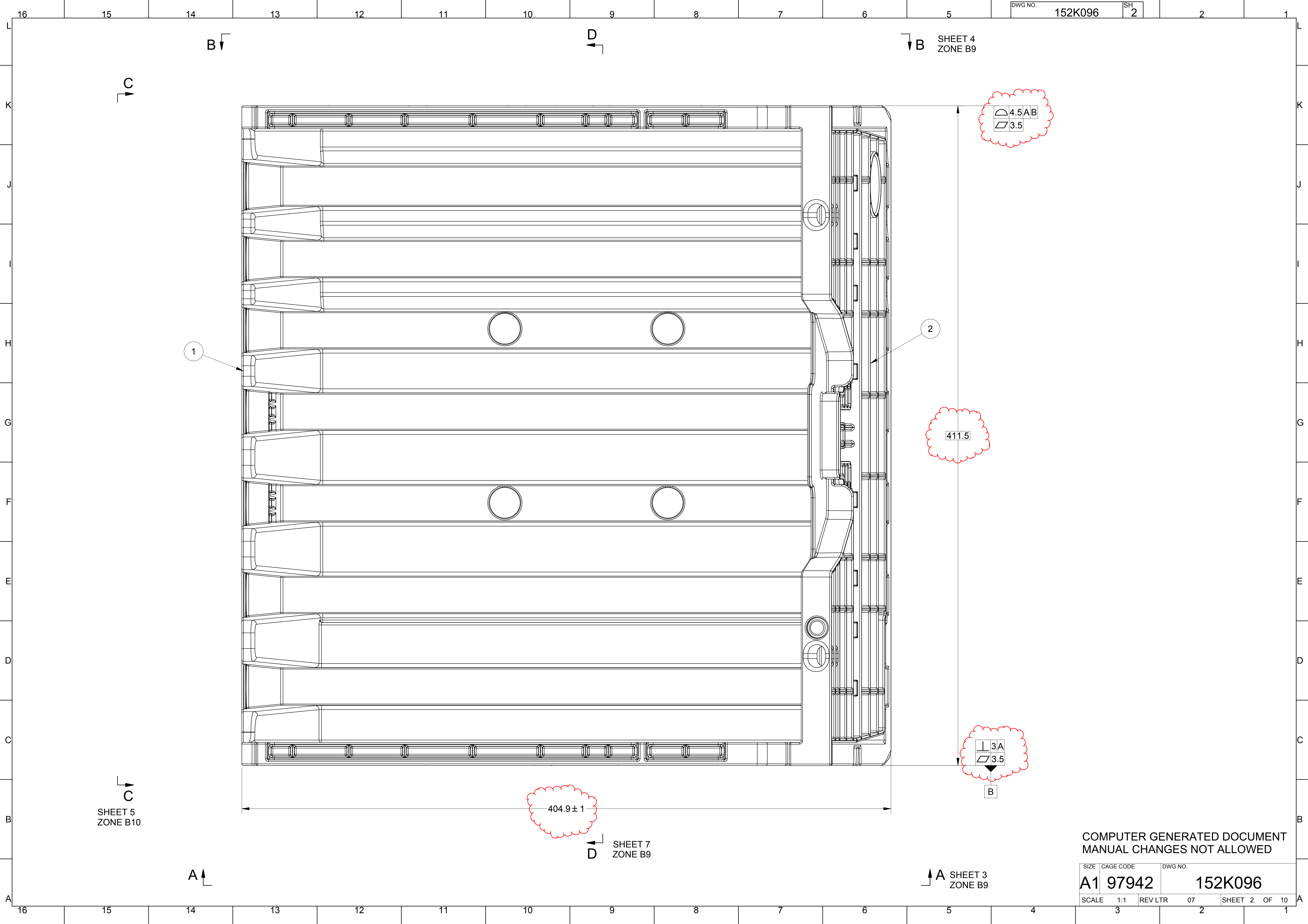
SHEET 7
ZONE B9

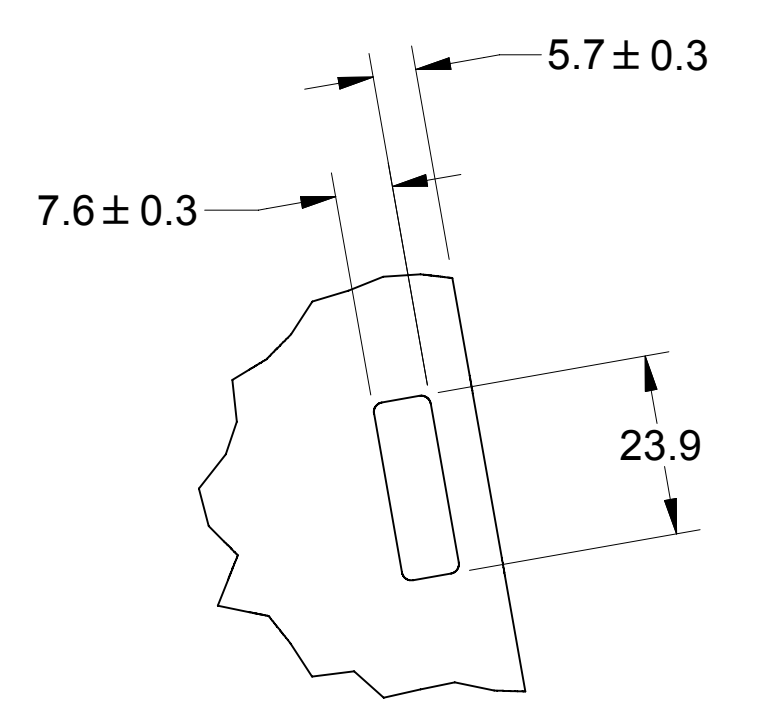
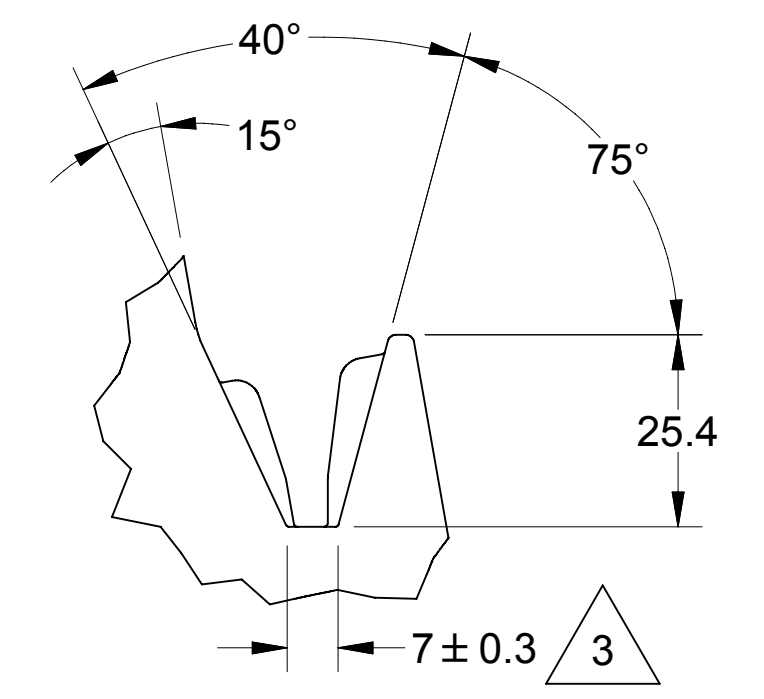
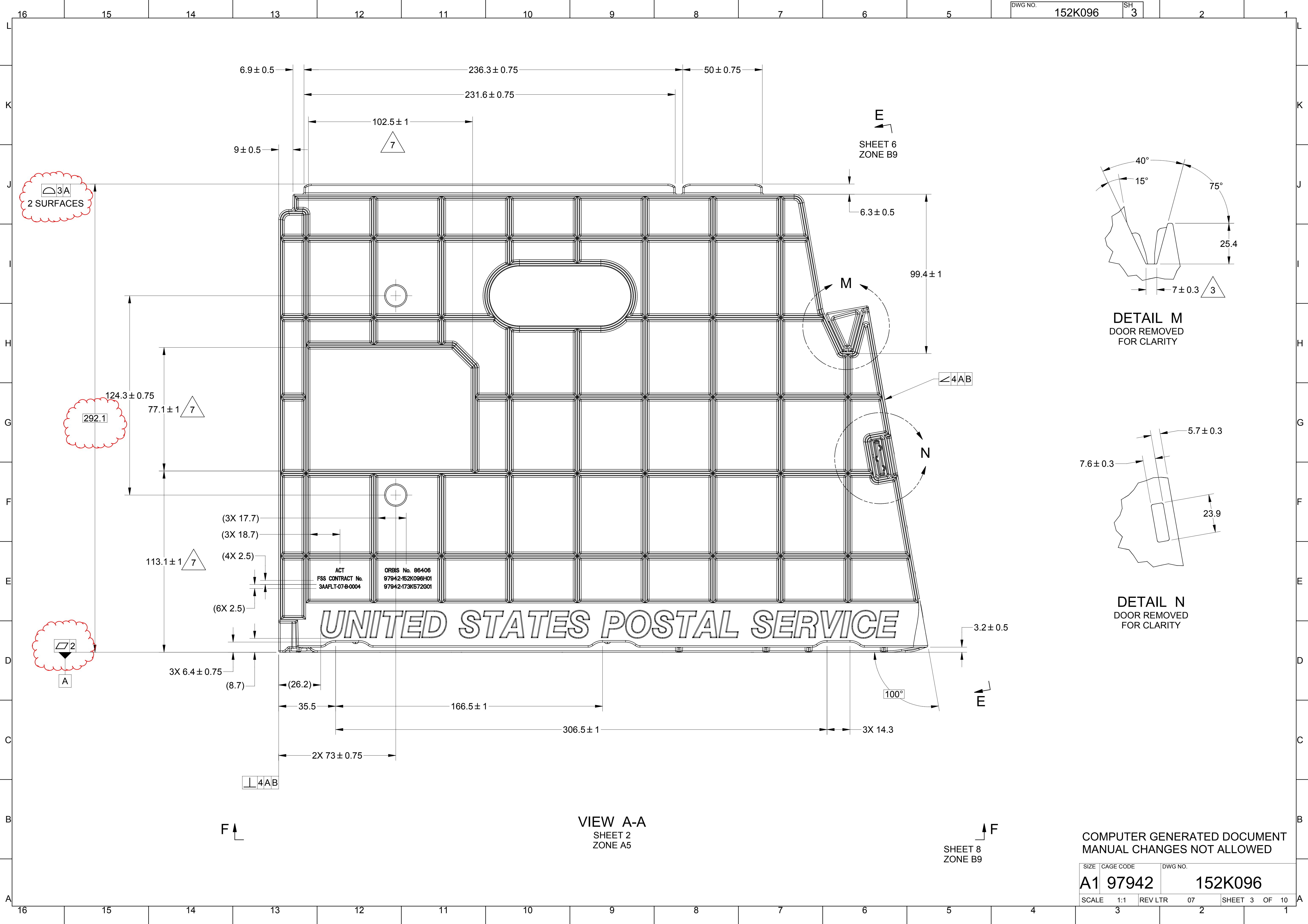
SHEET 3
ZONE B9

SHEET 5
ZONE B10

COMPUTER GENERATED DOCUMENT
MANUAL CHANGES NOT ALLOWED

SIZE	CAGE CODE	DWG NO.
A1	97942	152K096
SCALE	1:1	REV LTR 07
		SHEET 2 OF 10





ACT
FSS CONTRACT No.
3AAFLT-07-B-0004

QRBS No. 98406
97942-152K096H01
97942-173K572301

UNITED STATES POSTAL SERVICE

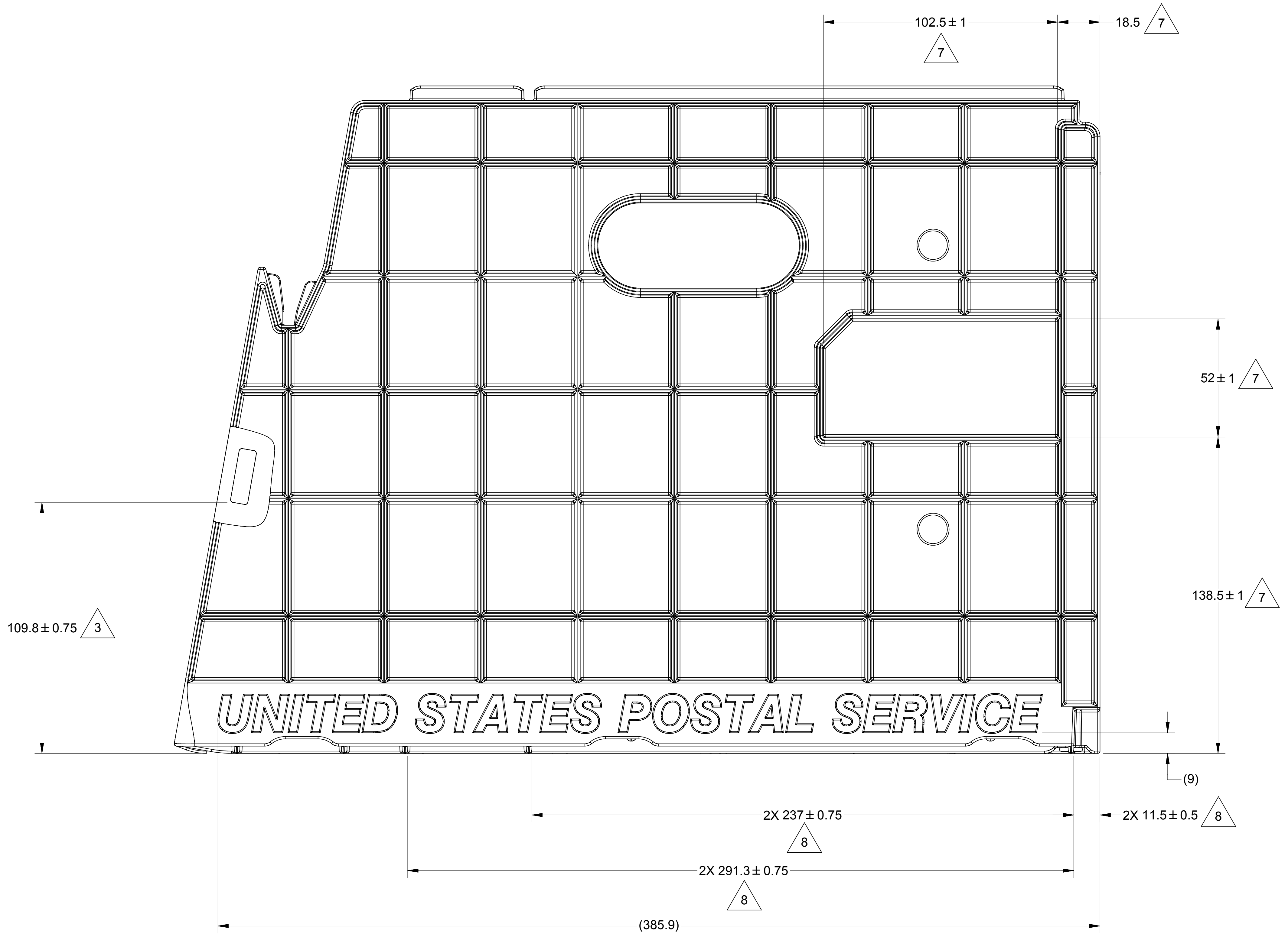
VIEW A-A
SHEET 2
ZONE A5

E
SHEET 6
ZONE B9

F
SHEET 8
ZONE B9

COMPUTER GENERATED DOCUMENT
MANUAL CHANGES NOT ALLOWED

SIZE	CAGE CODE	DWG NO.
A1	97942	152K096
SCALE	REV LTR	SHEET 3 OF 10
1:1	07	2

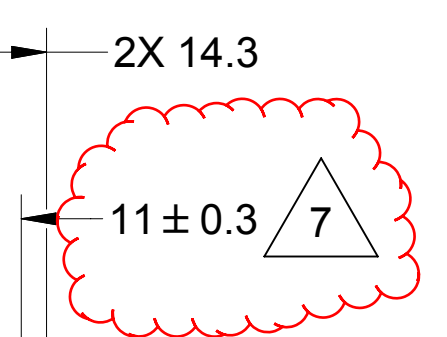
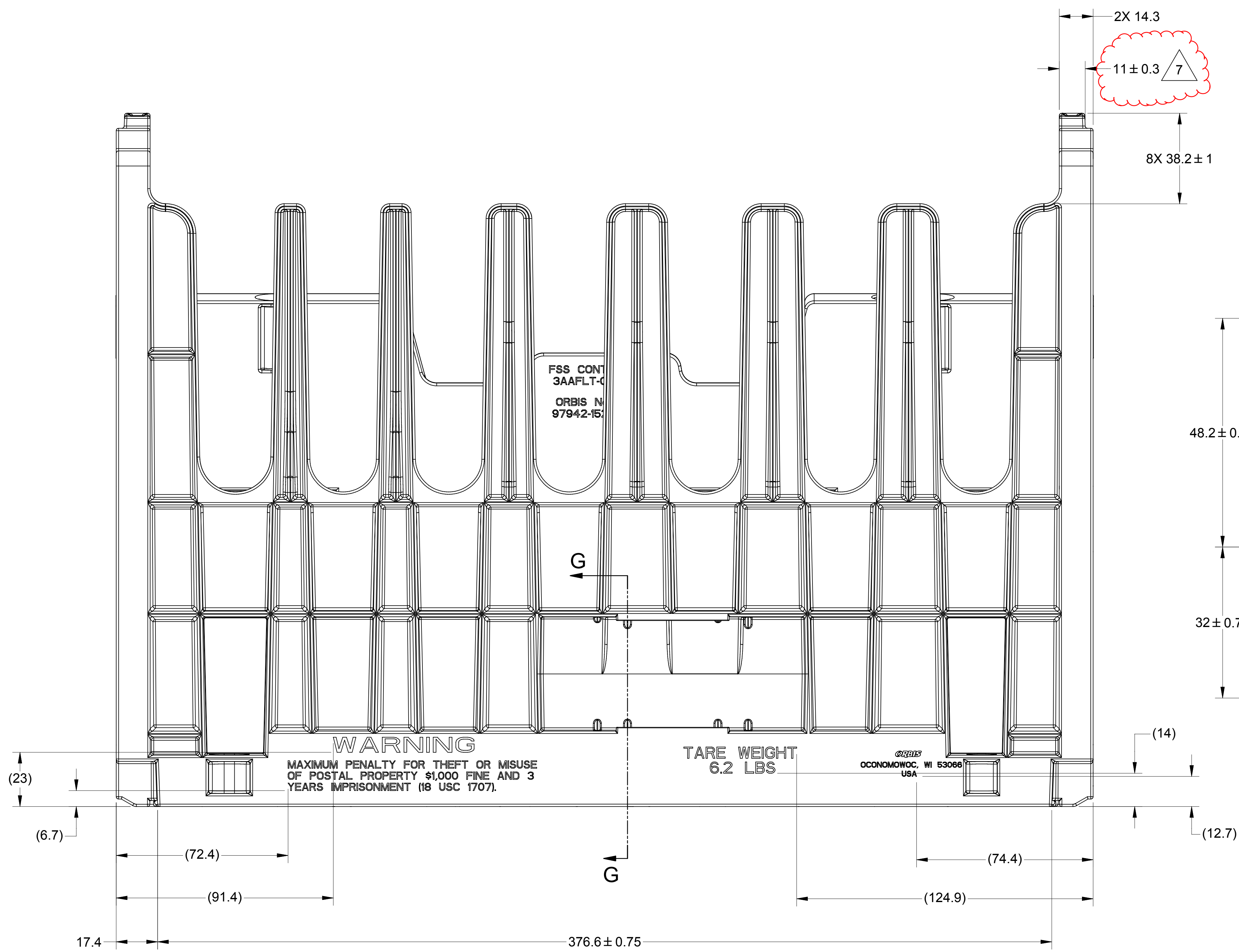


UNITED STATES POSTAL SERVICE

VIEW B-B
ROTATED 180°
SHEET 2
ZONE L5
DOOR REMOVED FOR CLARITY

COMPUTER GENERATED DOCUMENT
MANUAL CHANGES NOT ALLOWED

SIZE	CAGE CODE	DWG NO.
A1	97942	152K096
SCALE	1:1	REV LTR 07
		SHEET 4 OF 10



8X 38.2 ± 1

2X 14.3

14 ± 0.5

1.6 ± 0.3

4.8 ± 0.3 3

48.2 ± 0.75

4.7 ± 0.3 3

32 ± 0.75

1.6 ± 0.3

2X 7.1 ± 0.3 3

SECTION G-G
SCALE 2 : 1

WARNING
MAXIMUM PENALTY FOR THEFT OR MISUSE
OF POSTAL PROPERTY \$1,000 FINE AND 3
YEARS IMPRISONMENT (18 USC 1707).

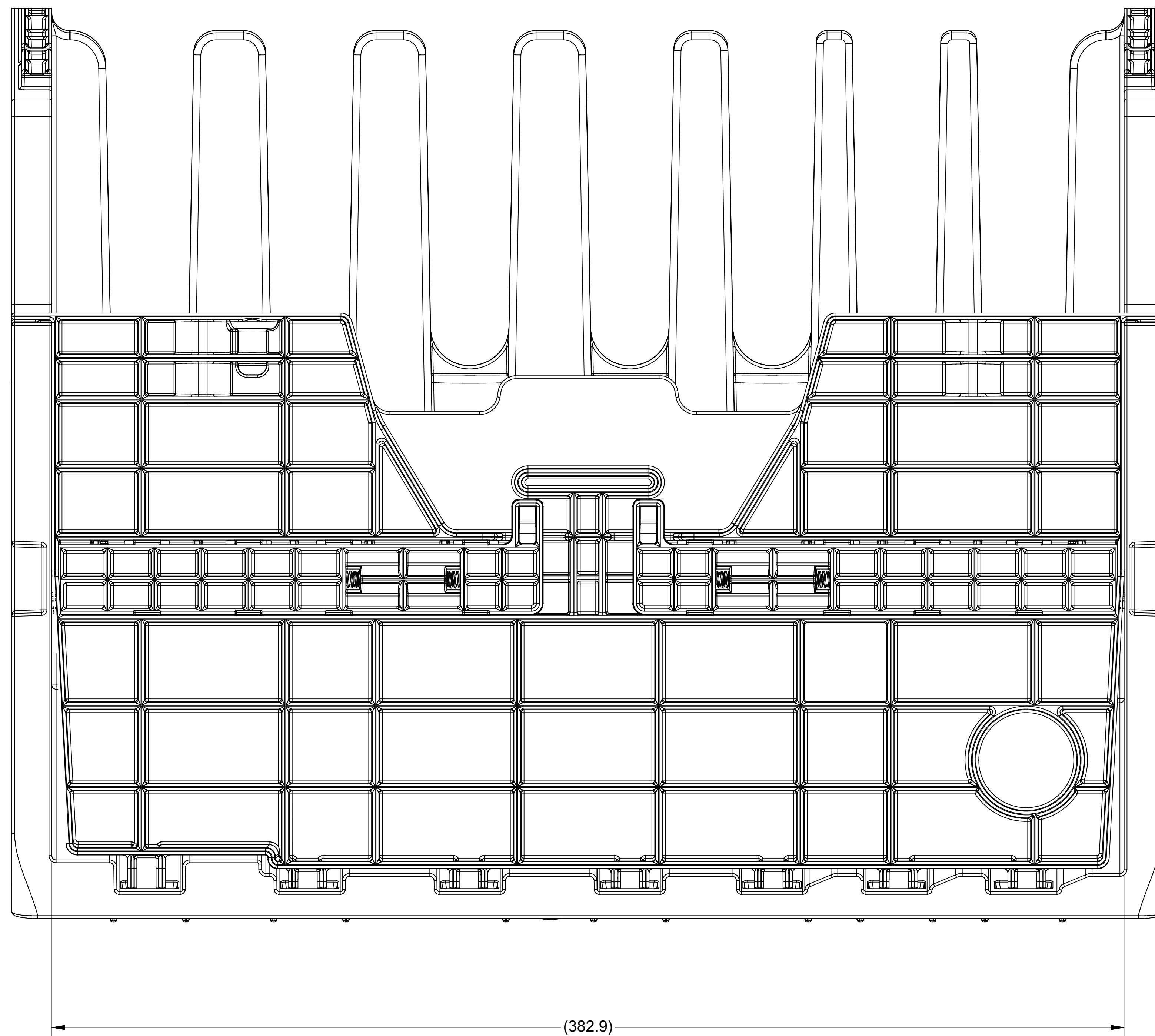
TARE WEIGHT
6.2 LBS

ORBIS
OCONOMOWOC, WI 53086
USA

VIEW C-C
ROTATED 90° CCW
SHEET 2
ZONE B15

COMPUTER GENERATED DOCUMENT
MANUAL CHANGES NOT ALLOWED

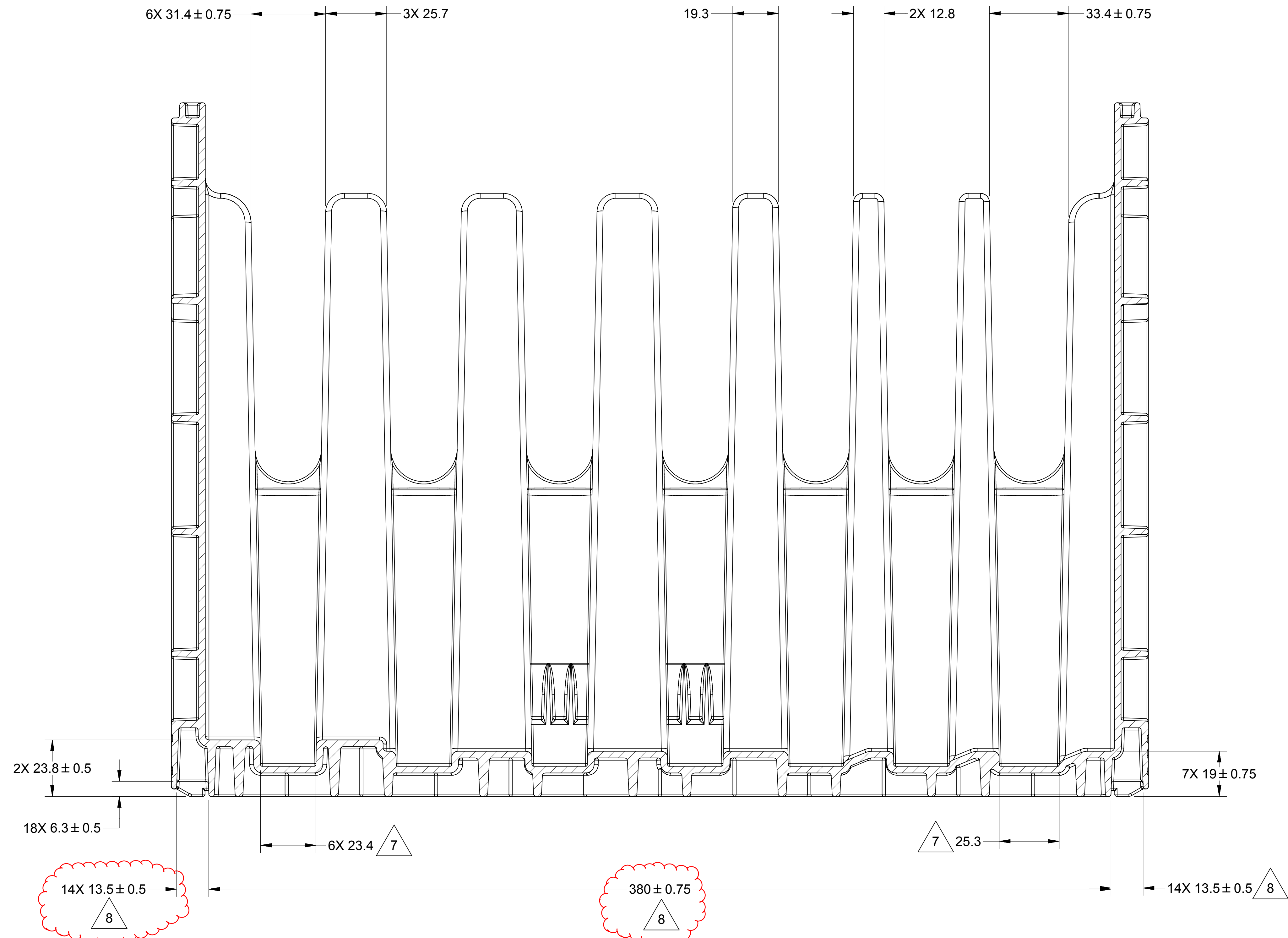
SIZE	CAGE CODE	DWG NO.
A1	97942	152K096
SCALE	REV LTR	SHEET
1:1	07	5 OF 10



SECTION E-E
 ROTATED 10° CW
 SHEET 3
 ZONE J5

COMPUTER GENERATED DOCUMENT
 MANUAL CHANGES NOT ALLOWED

SIZE	CAGE CODE	DWG NO.
A1	97942	152K096
SCALE	1:1	REV LTR 07
		SHEET 6 OF 10

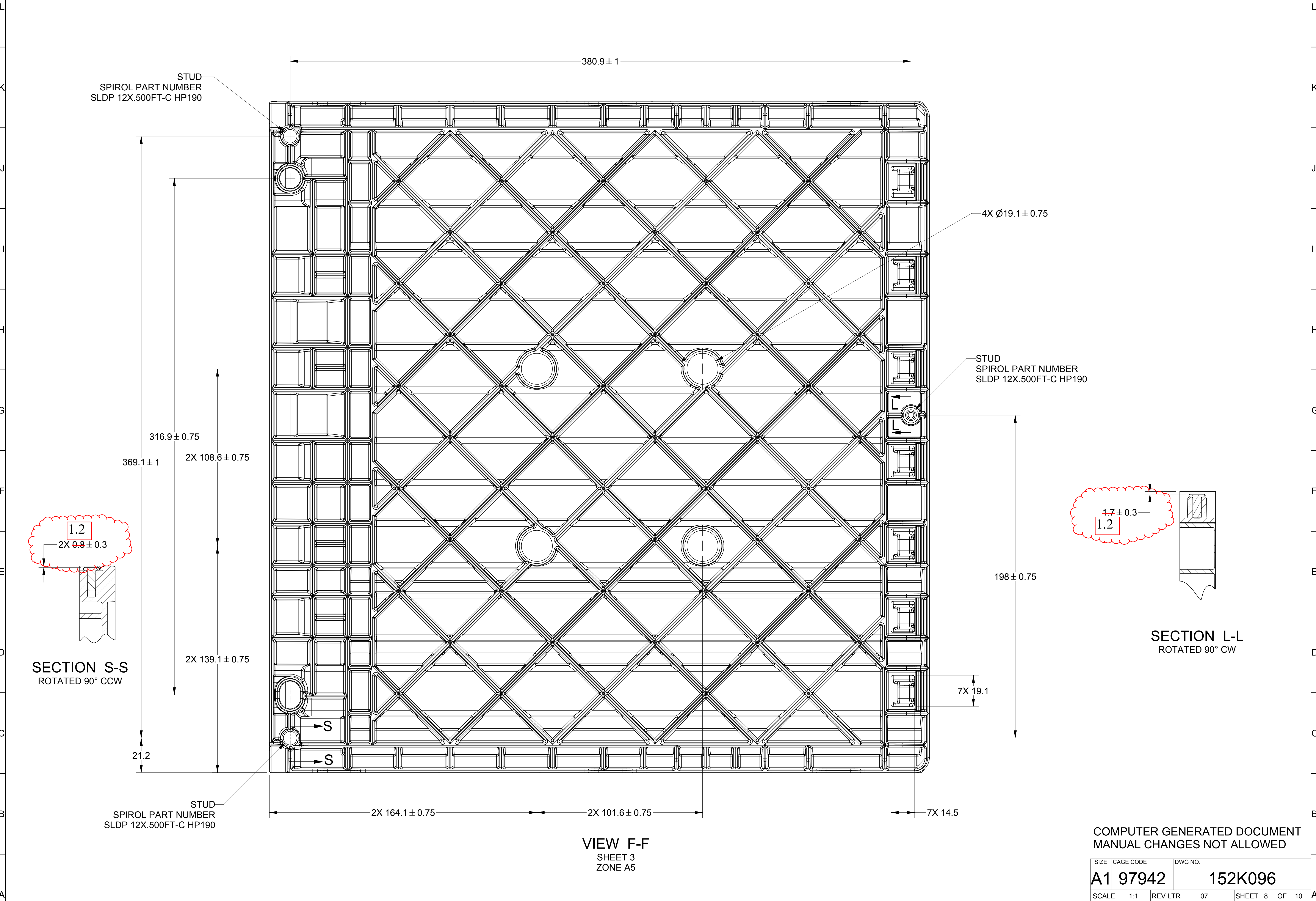


SECTION D-D
 ROTATED 90° CW
 SHEET 2
 ZONE A9

COMPUTER GENERATED DOCUMENT
 MANUAL CHANGES NOT ALLOWED

SIZE	CAGE CODE	DWG NO.
A1	97942	152K096
SCALE	1:1	REV LTR 07
		SHEET 7 OF 10

16 15 14 13 12 11 10 9 8 7 6 5 4 3 2 1



STUD
SPIROL PART NUMBER
SLDP 12X.500FT-C HP190

4X Ø19.1 ± 0.75

STUD
SPIROL PART NUMBER
SLDP 12X.500FT-C HP190

316.9 ± 0.75
369.1 ± 1
2X 108.6 ± 0.75

198 ± 0.75

2X 139.1 ± 0.75

7X 19.1

21.2

2X 164.1 ± 0.75

2X 101.6 ± 0.75

7X 14.5

1.2
2X 0.8 ± 0.3

1.7 ± 0.3
1.2

SECTION S-S
ROTATED 90° CCW

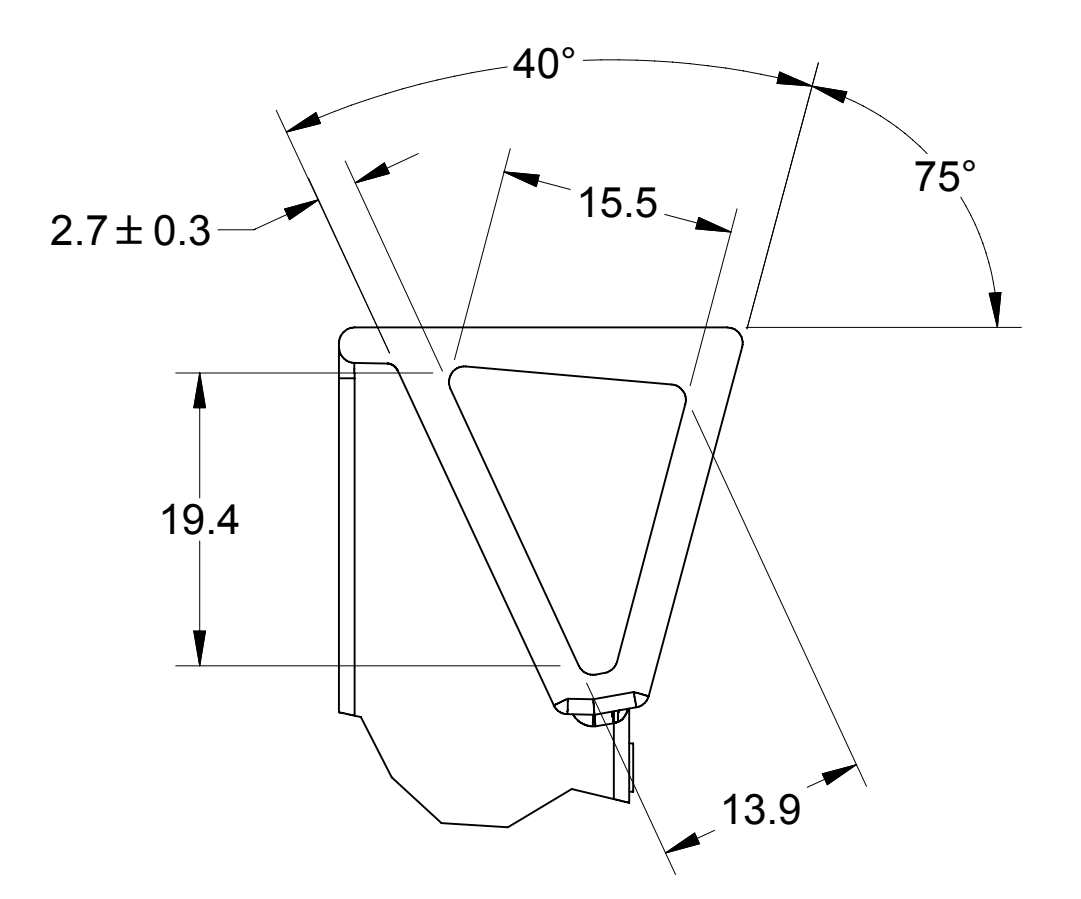
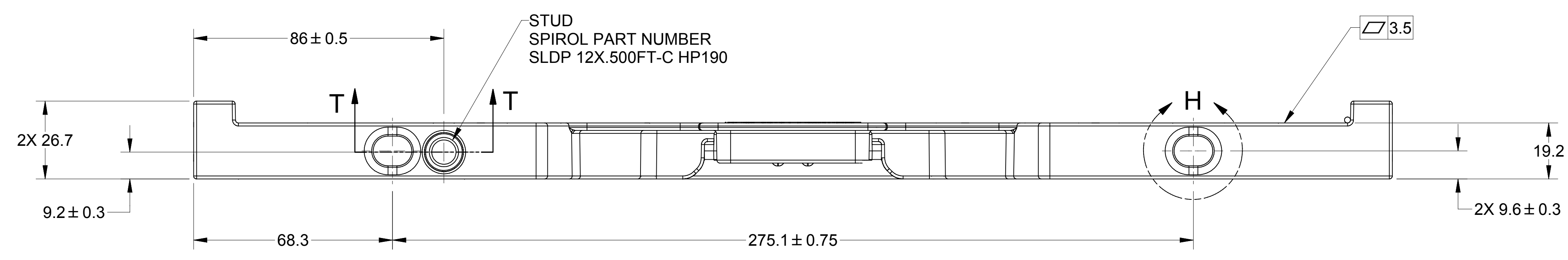
SECTION L-L
ROTATED 90° CW

VIEW F-F
SHEET 3
ZONE A5

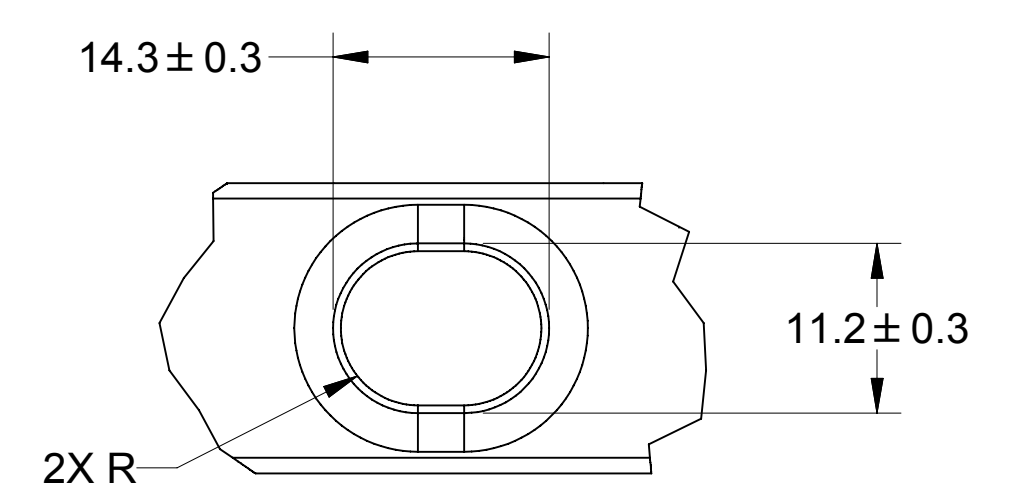
COMPUTER GENERATED DOCUMENT
MANUAL CHANGES NOT ALLOWED

SIZE	CAGE CODE	DWG NO.
A1	97942	152K096
SCALE	REV LTR	SHEET 8 OF 10
1:1	07	2

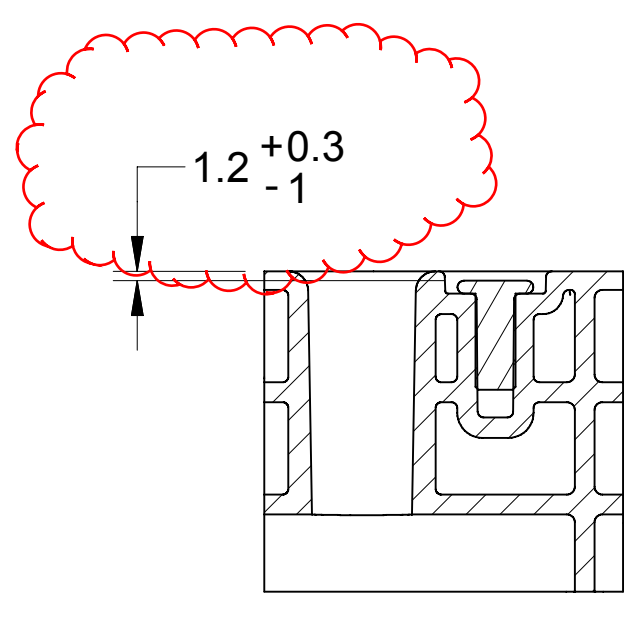
16 15 14 13 12 11 10 9 8 7 6 5 4 3 2 1



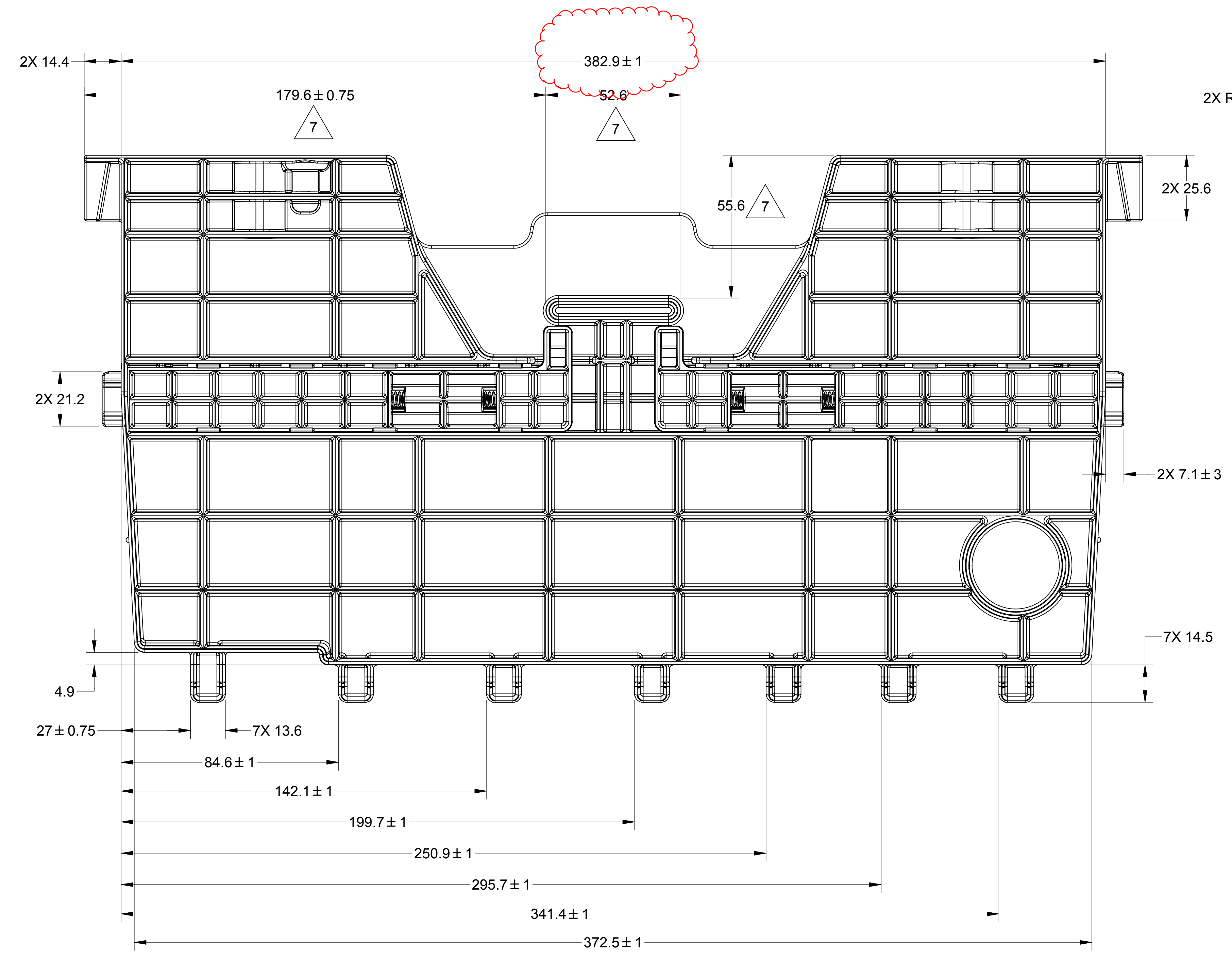
DETAIL R
SCALE 2 : 1



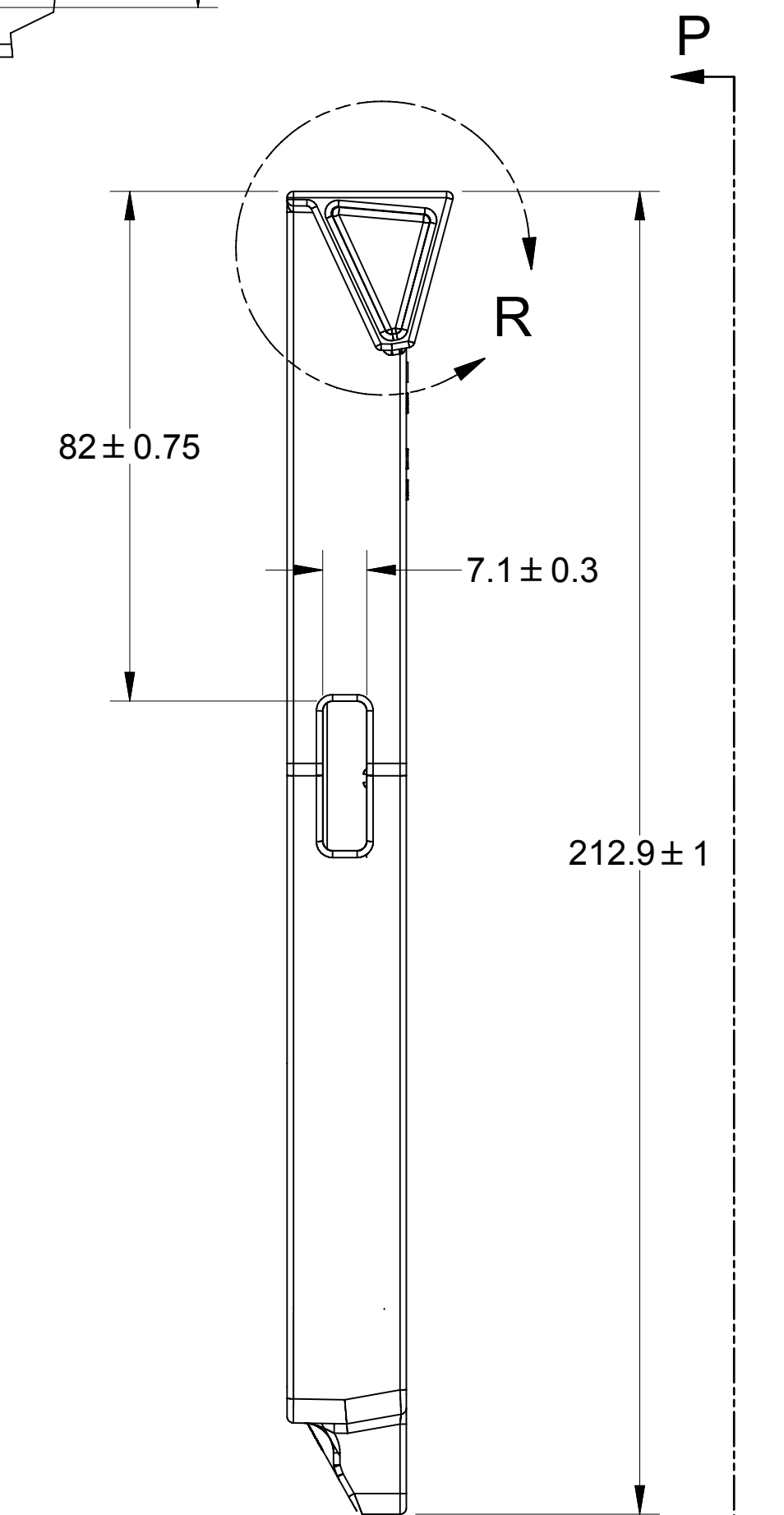
DETAIL H
SCALE 2 : 1
2X



SECTION T-T



ITEM 2

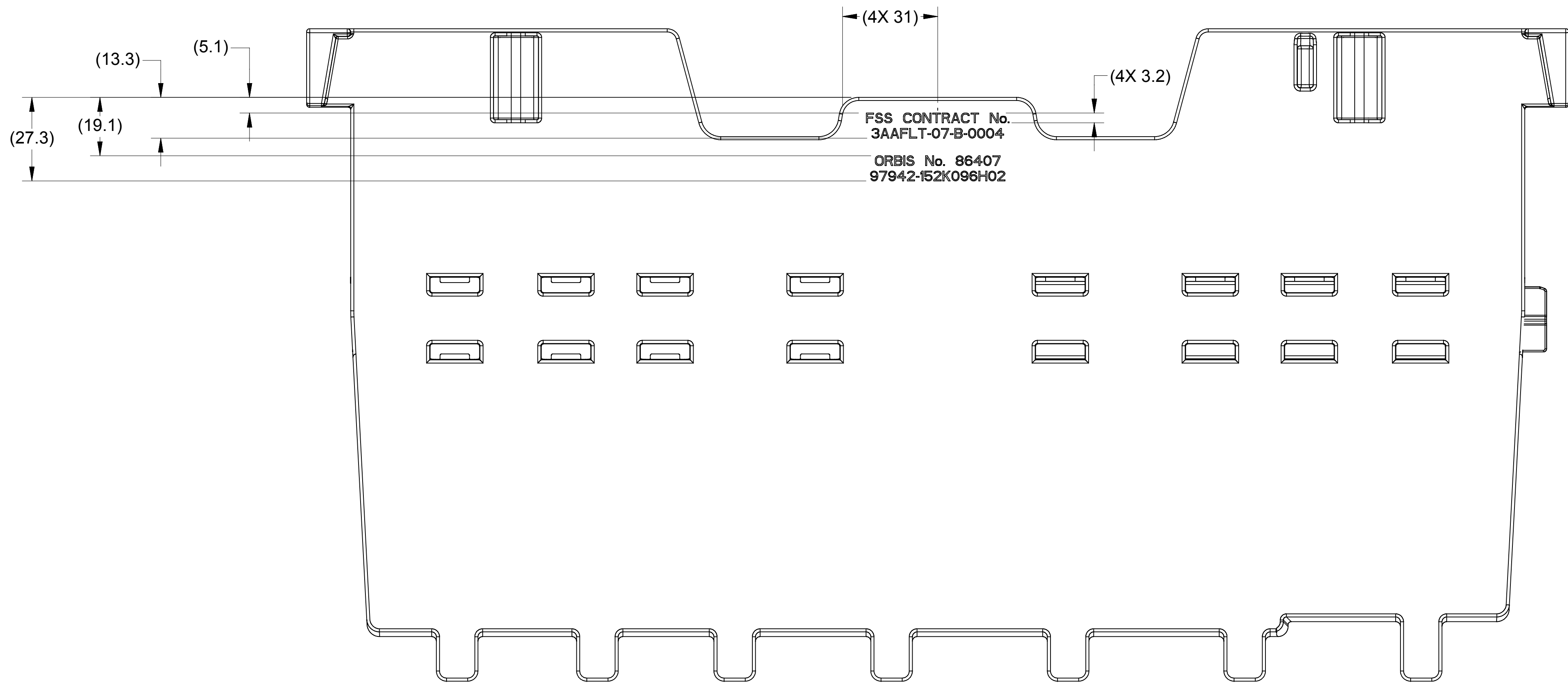


LATCH AND SPRING
REMOVED FOR CLARITY

SHEET 10
ZONE C9

COMPUTER GENERATED DOCUMENT
MANUAL CHANGES NOT ALLOWED

SIZE	CAGE CODE	DWG NO.
A1	97942	152K096
SCALE	REV LTR	SHEET
1:1	07	9 OF 10



FSS CONTRACT No.
3AAFLT-07-B-0004
ORBIS No. 86407
97942-152K096H02

SECTION P-P
SHEET 9
ZONE C2

COMPUTER GENERATED DOCUMENT
MANUAL CHANGES NOT ALLOWED

SIZE	CAGE CODE	DWG NO.
A1	97942	152K096
SCALE	1:1	REV LTR 07
		SHEET 10 OF 10