

# Joplin Tornado - May 22nd, 2011

[Weather.gov](#) > [Springfield, MO](#) > Joplin Tornado - May 22nd, 2011

Springfield, MO  
Weather Forecast Office

[Current Hazards](#)   [Current Conditions](#)   [Radar](#)   [Forecasts](#)   [Rivers and Lakes](#)   [Climate and Past Weather](#)   [Local Programs](#)

## Overview

2011may22

tracked from extreme southeast Kansas into far southwest Missouri (NWS Springfield, Missouri County Warning Area). This storm produced an EF-5 tornado that caused incredible destruction and a tragic loss of life. This storm

generated additional tornadoes, wind damage and flash flooding across far southwest Missouri.

A large portion of Joplin, Missouri was devastated by an **EF-5 (greater than 200 mph)** tornado resulting in **158 fatalities** and **over 1000 injured** in the Joplin MO area. The Joplin tornado is the deadliest since modern record keeping began in 1950 and is ranked 7th among the deadliest tornadoes in U.S. history.

The tornado surpassed the June 8, 1953, tornado that claimed 116 lives in Flint, Mich., as the deadliest single tornado to strike the U.S. since modern tornado recordkeeping began in 1950. The deadliest tornado on record in the U.S. was on March 18, 1925. The Tri-State Tornado (MO, IL, IN) had a 291-mile path, was rated F5 based on a historic assessment, and caused 695 fatalities.

More information on 2011 Tornado statistics can be found at the following web site: [http://www.noaanews.noaa.gov/2011\\_tornado\\_information.html](http://www.noaanews.noaa.gov/2011_tornado_information.html)

[NOAA High Resolution Imagery of Joplin Tornado Damage](#)



Joplin Tornado

### Warning Information:

The NWS Springfield, Mo., Weather Forecast Office issued a tornado warning at 5:17 p.m. (local time), with 17 minutes of lead time for touchdown and 19 minutes lead time before entering Joplin. The damage path began at South Black Cat Road and Newton Road.





Tornado

Photos & Video

Radar

Storm Reports

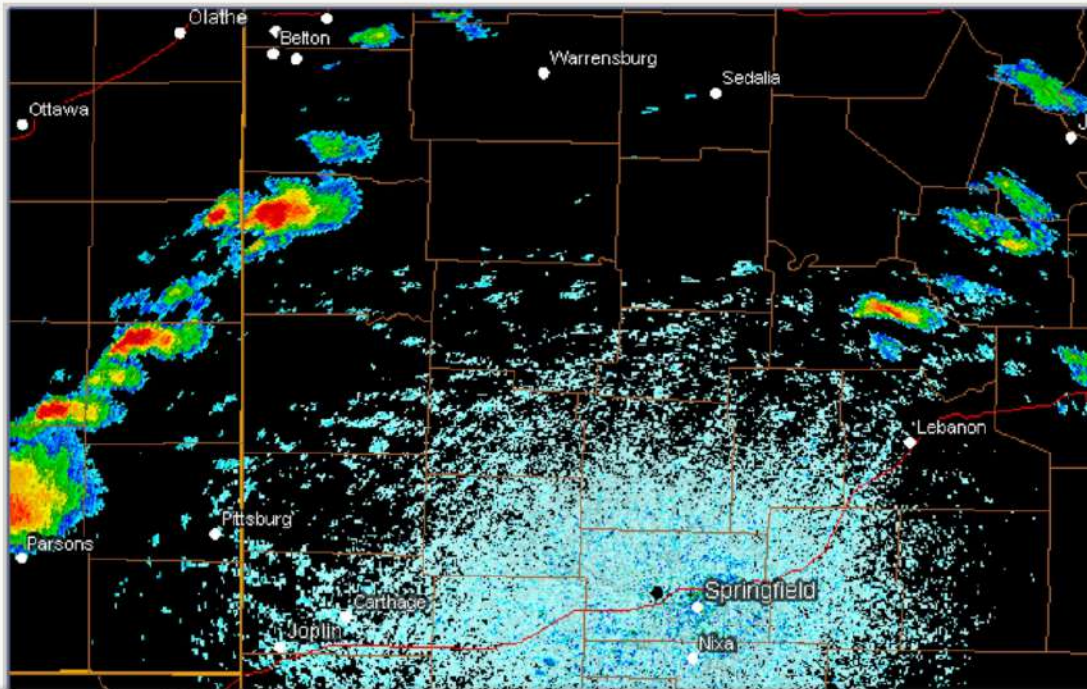
Photos & Video:



*Media use of NWS Web News Stories is encouraged!  
Please acknowledge the NWS as the source of any news information accessed from this site.*



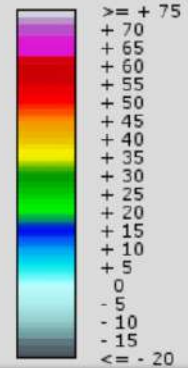
Radar:



NEXRAD LEVEL-II  
 KSGF - SPRINGFIELD, MO  
 05/22/2011 20:04:15 GMT  
 LAT: 37/14/05 N  
 LON: 93/24/03 W  
 ELEV: 1278 FT  
 VCP: 211

REFLECTIVITY  
 ELEV ANGLE: 0.53

Legend: dBZ



\_2011may22



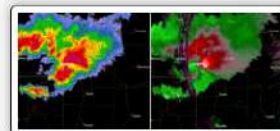
5:29pm - 5:43 pm Reflectivity/SRM



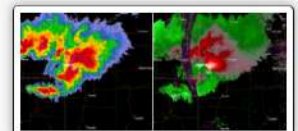
5:29pm



5:34 pm

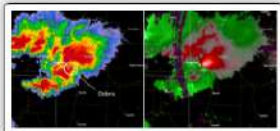


5:39 pm

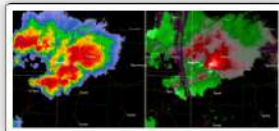


5:43 pm

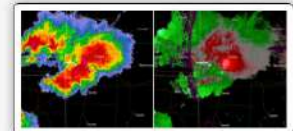
5:48 pm - 5:58 pm Reflectivity/SRM



5:48 pm



5:53 pm



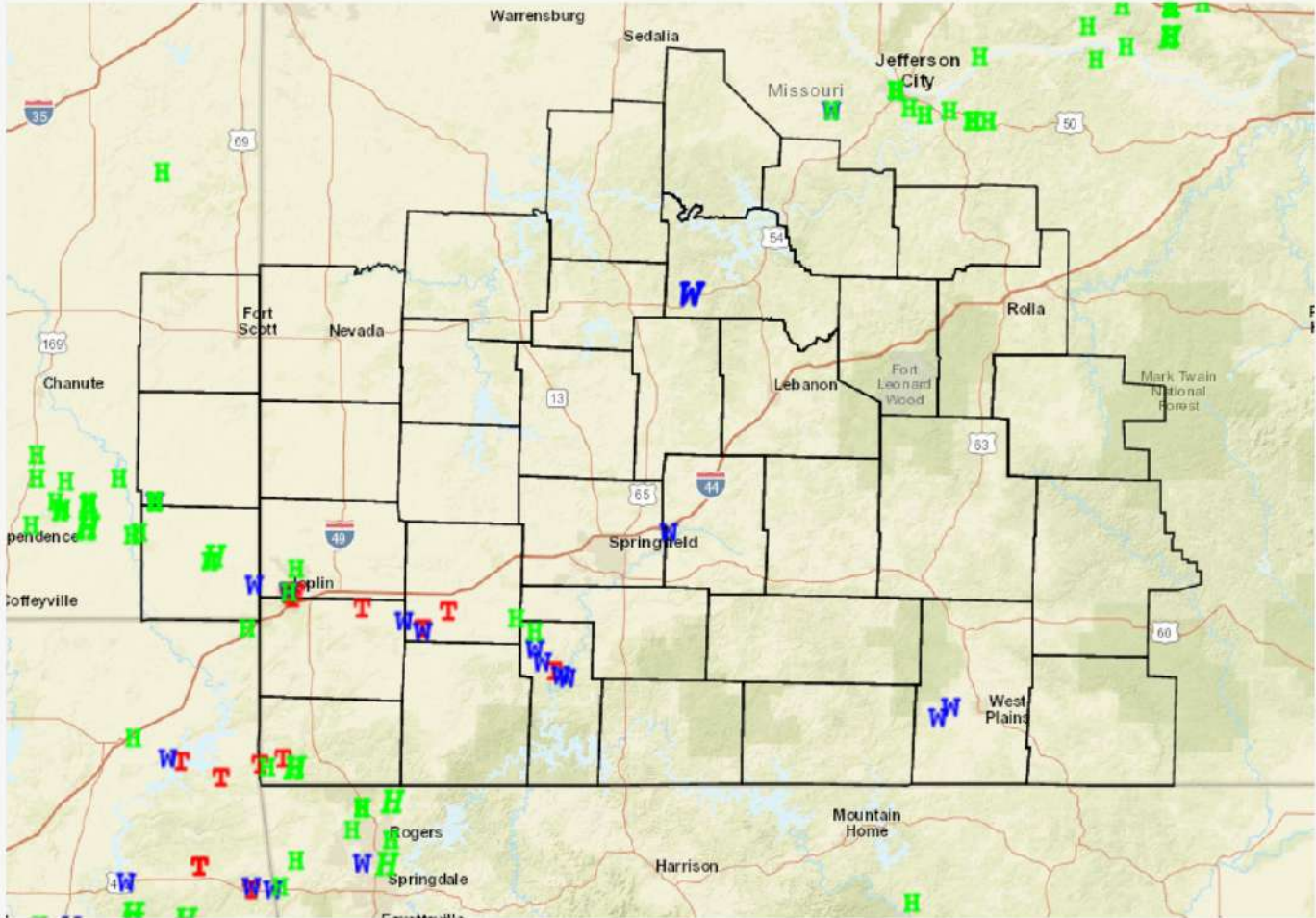
5:58 pm



Media use of NWS Web News Stories is encouraged!  
 Please acknowledge the NWS as the source of any news information accessed from this site.



### Storm Reports



Media use of NWS Web News Stories is encouraged!  
Please acknowledge the NWS as the source of any news information accessed from this site.

