

禕衣

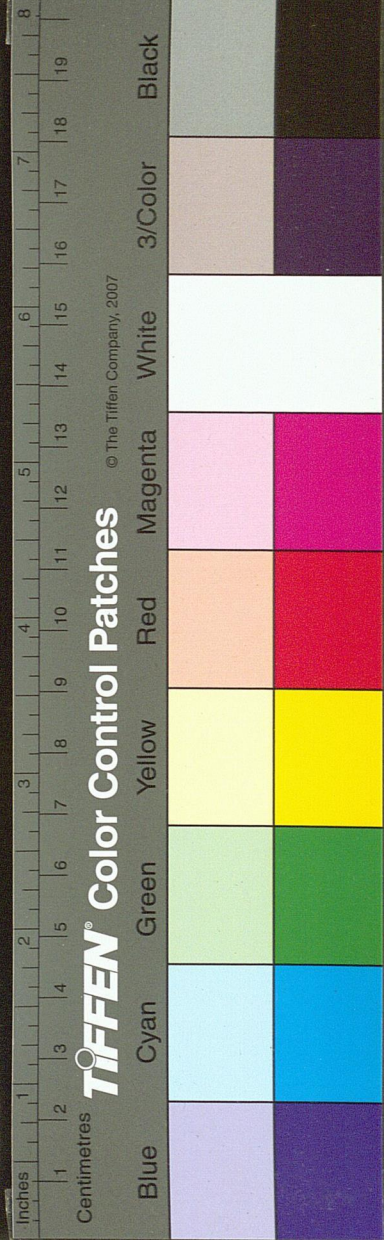


禕衣色玄刻繒為翬后從王祭先王之服

士皮弁



士之服





狄 闕



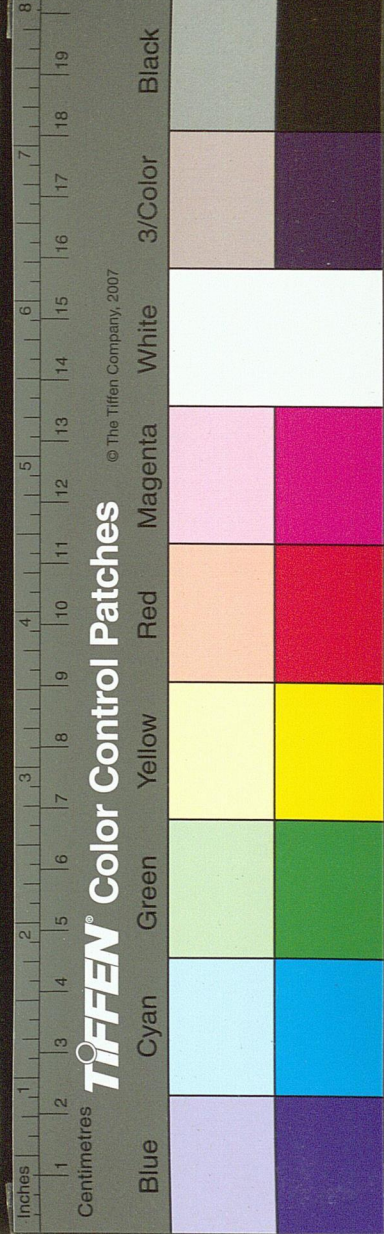
闕狄色赤刻繒爲翟后從王祭群小祀之服

狄 揄



揄狄色青刻繒爲揄后從王祭先公之服

國家圖書館 NATIONAL CENTRAL LIBRARY, TAIWAN, R.O.C.



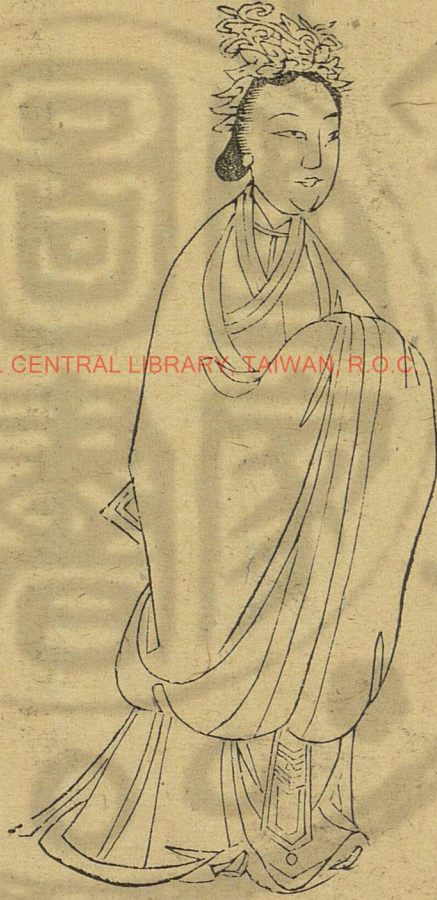


展衣



展衣色白后以禮見王及賓客之服

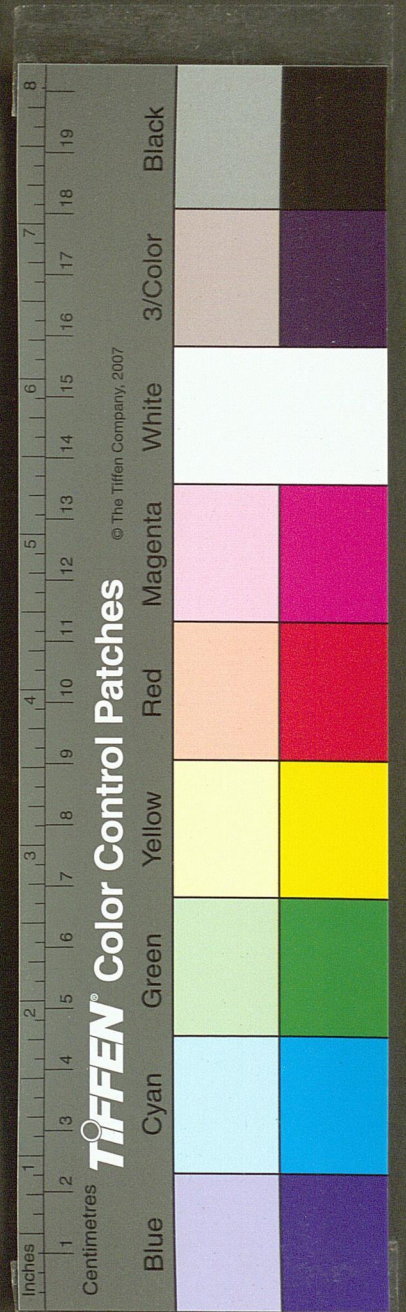
鞠衣



鞠衣色黃后告祭之服

三才圖會 卷一 衣用

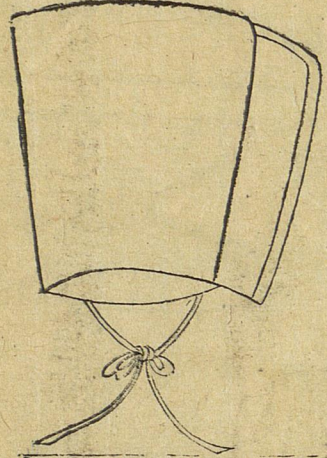
三才圖會 卷一 衣用



國家圖書館 NATIONAL CENTRAL LIBRARY TAIWAN, R.O.C.

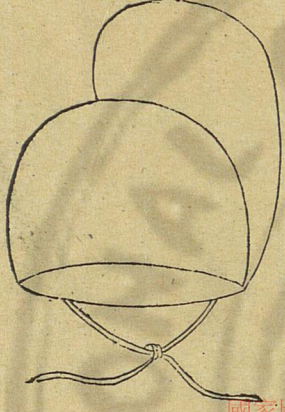


甫章



商之冠曰章甫其制與周之委貌夏之毋追相似俱用緇布爲之

毋追

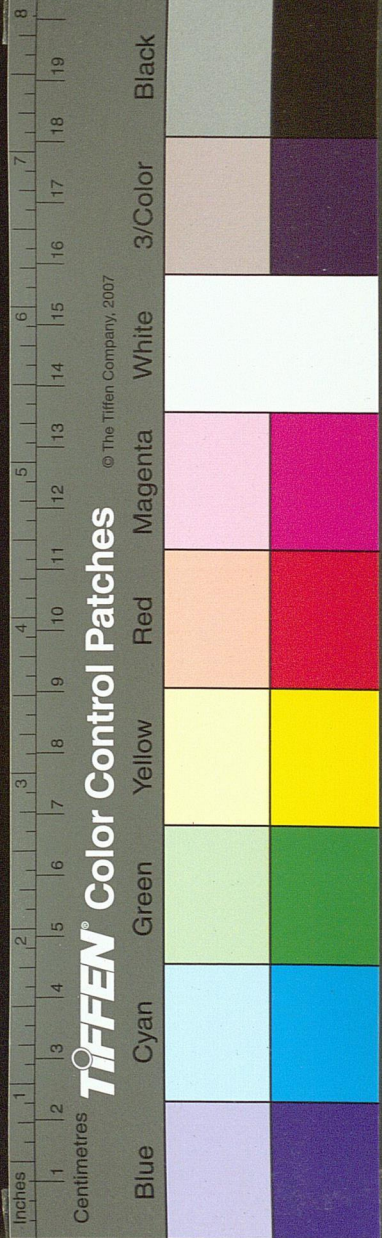


夏之冠曰毋追以漆布爲殼以緇縫其上  
前廣一寸高三寸

祿衣



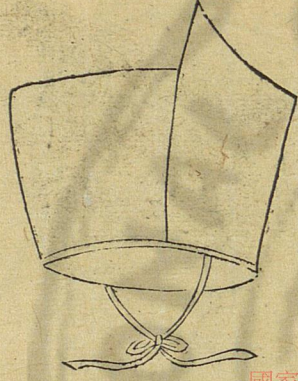
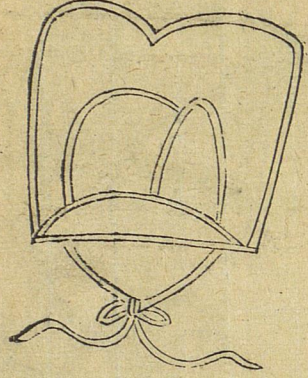
祿衣色黑后進御見王之服





介幘冠

委貌



行事獻官祭服也執事者用介幘冠以皮爲之其飾黑漆

周之冠曰委貌一名四玄冠今之進賢冠乃其遺象也

漢冕

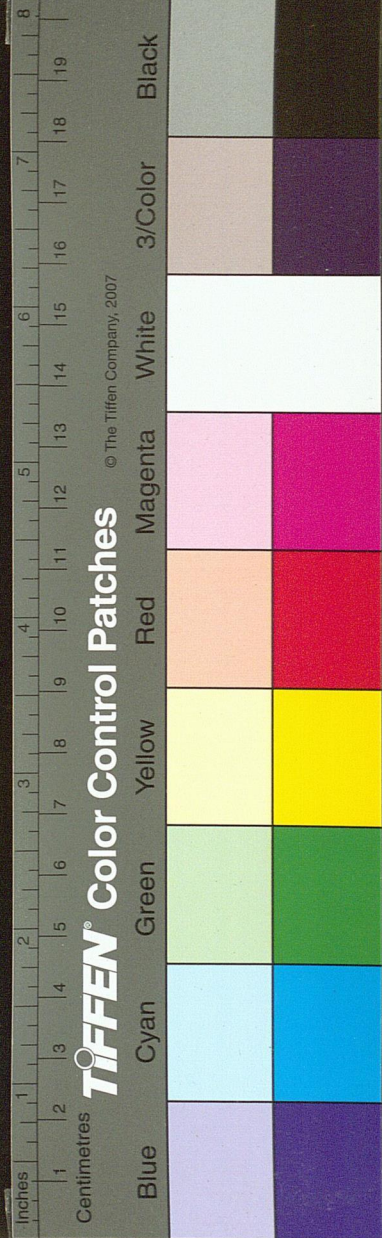
周冕圖



冠名殷曰皞周曰冕黼皞黼裳而皞冠也

漢制度云冕制長尺六寸廣八寸前圓後方其旒皆以五采絲繩貫五采玉每旒各十二番於冕禮有六冕裘冕無旒衮冕十二旒鷩冕九旒毳冕七旒絺冕五旒玄冕三旒

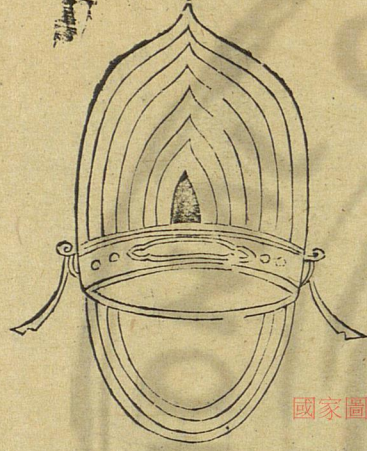
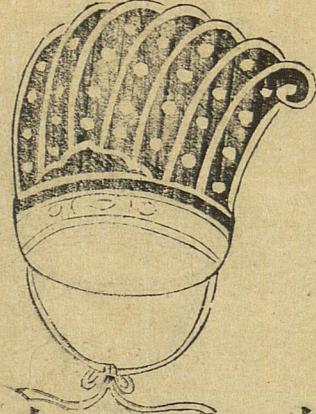
國家圖書館 NATIONAL CENTRAL LIBRARY, TAIWAN, R.O.C.





弁皮

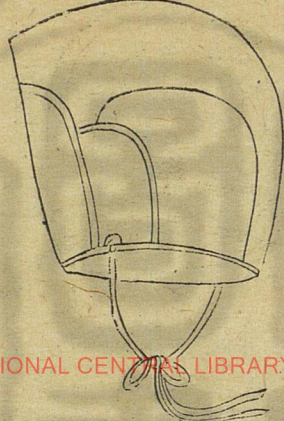
弁綦



綦弁孔傳綦文鹿子皮弁士  
冠禮注云皮弁以白鹿皮爲  
之弁師云王之皮弁會五采  
玉琪象即玉笄注云會縫中  
也琪讀爲綦綦結也即謂下  
抵梁正張謚圖云弁縫十二  
賈疏引詩會弁如星謂於弁  
十二縫中結五采玉落落而  
處狀似星也

冕麻

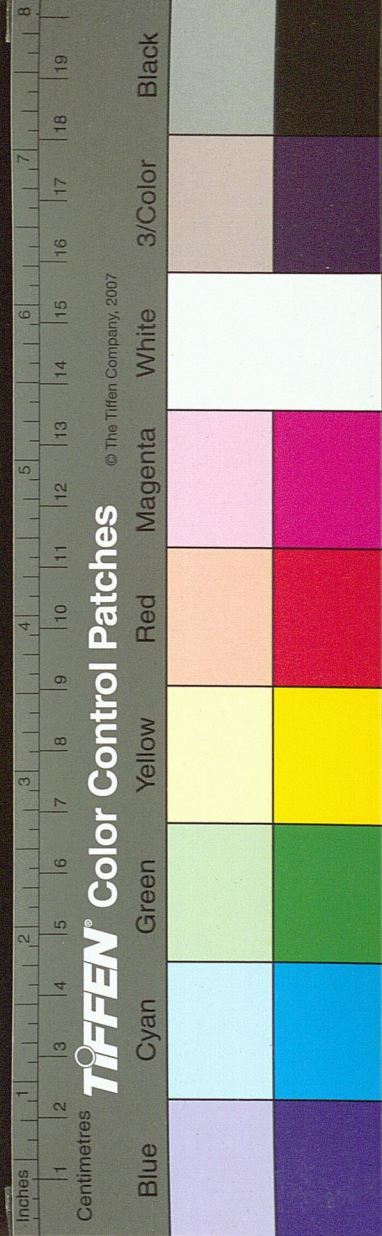
撮緇



麻冕案三禮圖以漆布爲  
殼以縱其上前廣四寸高  
五寸後廣四寸高三寸

緇布冠也撮者其制小僅  
可撮其髻也古注云太古  
冠

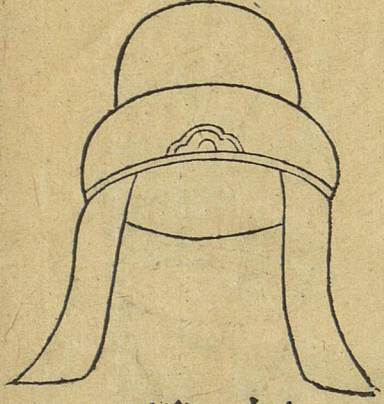
國家圖書館 NATIONAL CENTRAL LIBRARY, TAIWAN, R.O.C.



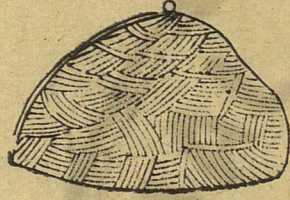


皮冠

臺笠



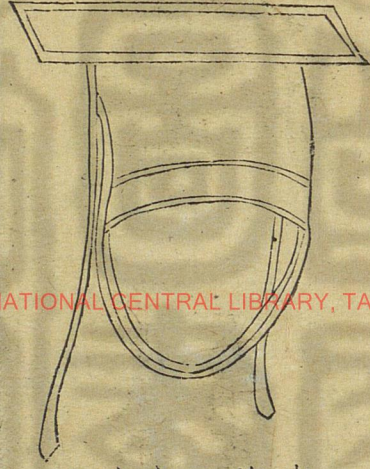
招田獵的虞人之皮冠以其所有事也



臺夫須也即蒞草也古注謂以夫須皮爲笠所以禦暑禦雨

雀弁

爵弁

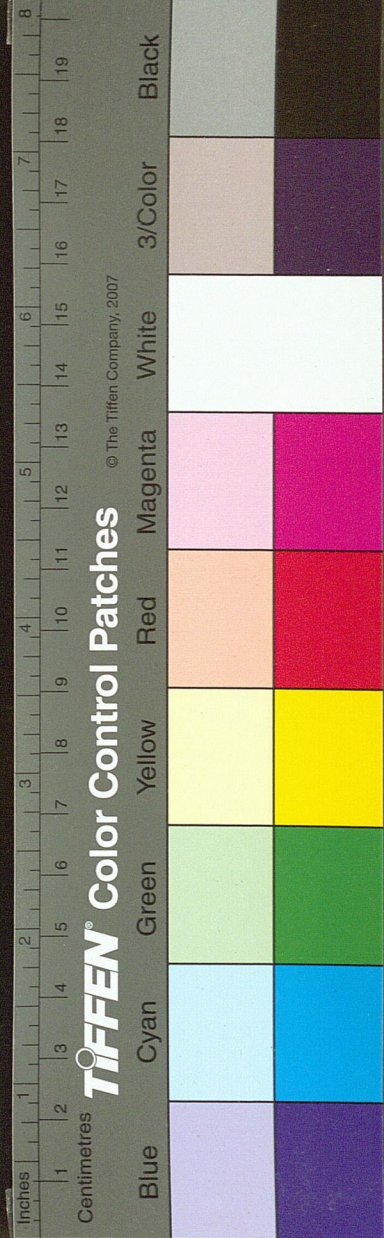


雀弁唐孔氏云韋弁也鄭云冕之次也其色赤而微黑如爵頭然用三十升布爲之亦長尺六寸廣八寸前圓後方無旒而前後平



古者冠禮初加緇布冠欲其尚質次加皮弁欲其行三王之德是益尊也三加爵弁欲其行敬事神明是彌尊也

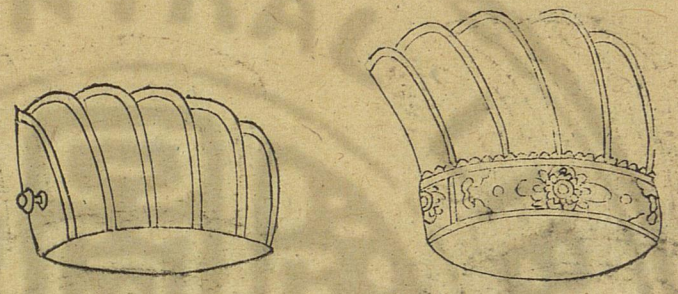
國家圖書館 NATIONAL CENTRAL LIBRARY, TAIWAN, R.O.C.





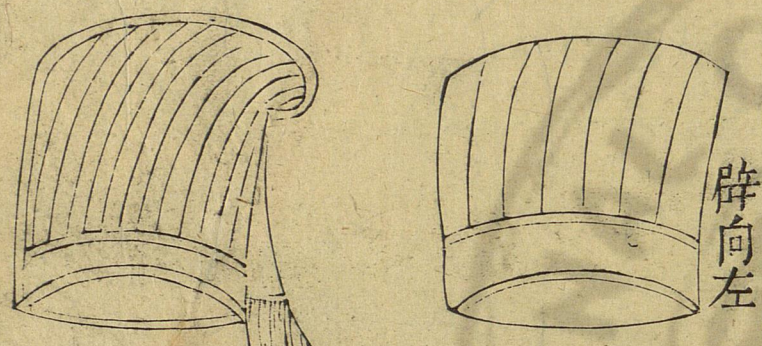
三才圖會 卷一 衣服

圖新冠緇 圖舊冠緇



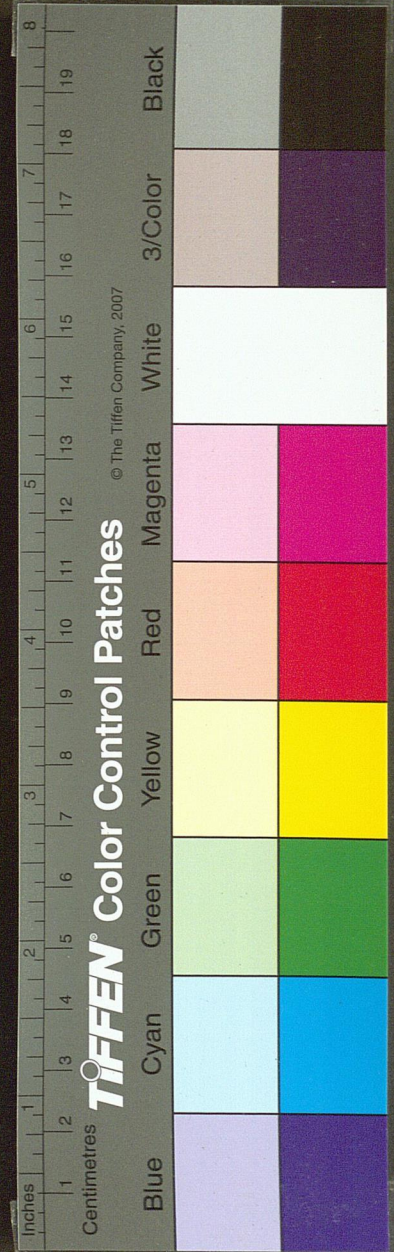
按家禮緇冠下註武高寸許上為五梁跨頂前後下著于武屈其兩端各半寸自外向內武之兩旁半寸之上竅以受笄則是梁之兩頭各蓋武上而反屈其末于武內也今卷首舊圖者乃加梁於武之上際武之前而又鏤形如俗所謂條環者又于武兩旁各增一片以受笄不知作圖者何所據也

巾幅萬紗烏 冠積五



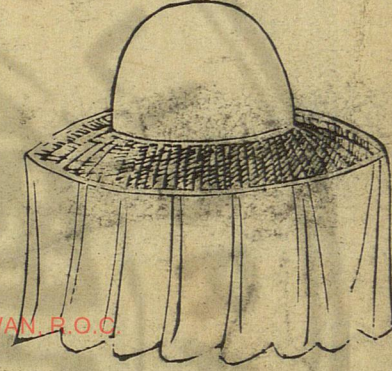
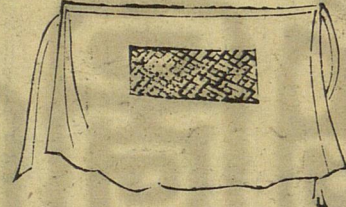
辟向左

按王氏制度云緇布冠今人用烏紗漉為之武連於冠辟積左縫登五攝向左以象五常用時以替橫貫之晉輿服志漢末王公名士多以幅巾為雅近世以烏紗方幅似今頭巾製之直縫其頂殺其兩端用以覆冠蓋古冠无巾今人冠小冠必加巾覆之





帷帽 面衣



唐輿服志曰帷帽創于隋代末徽中始用之施裙及頸宋士人往往用皂紗若青全幅連綴于油帽或瓊笠之前以障風塵為遠行之服蓋本此

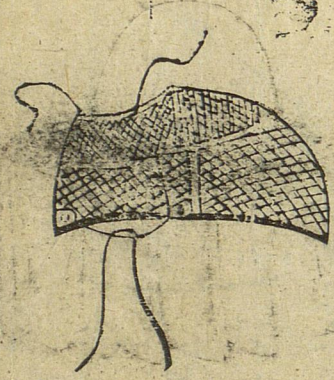
面衣前後全用紫羅為幅下垂雜他色為四帶垂于背為女三遠行乘馬之川亦曰面帽按西京雜記趙飛燕為皇后女弟昭儀上禮三十五條有金花紫羅面衣則漢已有面衣矣

幅巾



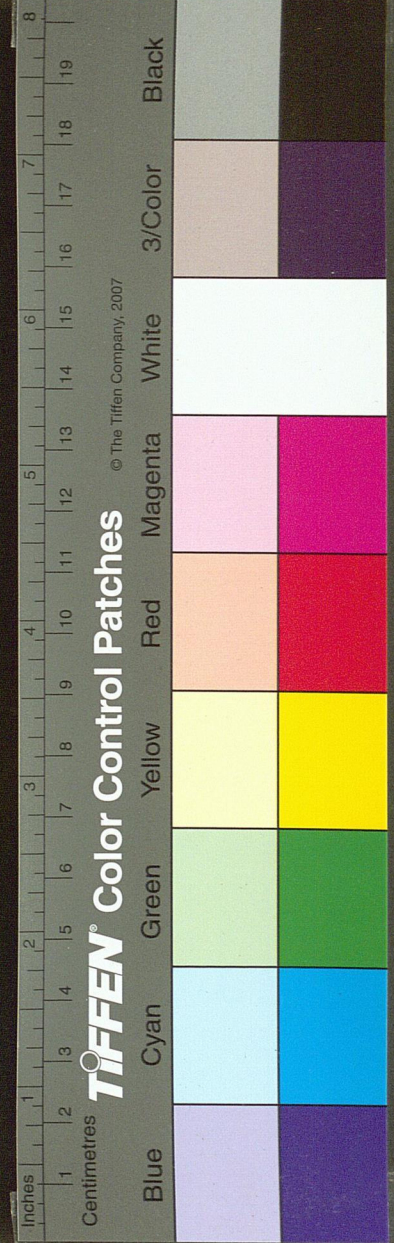
古庶人服巾士則冠矣傳子曰漢末王公多委士服以幅巾為雅素則幅巾古賤者之服也漢末始為士人之服

網巾



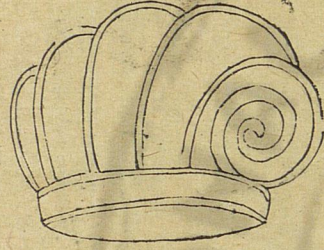
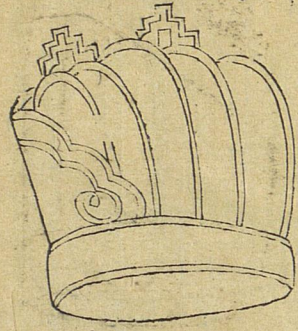
古無是制國朝初定天下改易胡風乃以絲結網以束其髮名曰網巾識者有法束中原四方平定之語海溼萬象錄曰太祖微行至神樂觀見一道士結網巾召取之遂為定制

國家圖書館 NATIONAL CENTRAL LIBRARY, TAIWAN, P.O.C



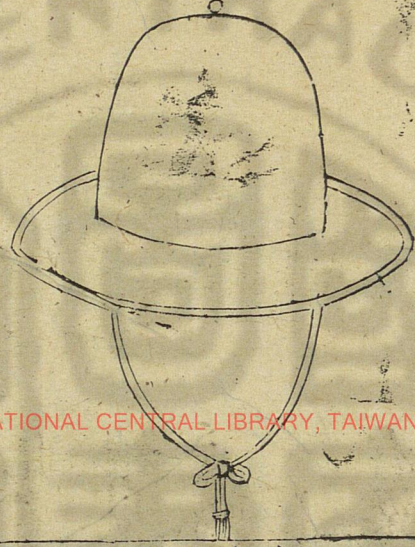


冠靖忠 巾葛諸



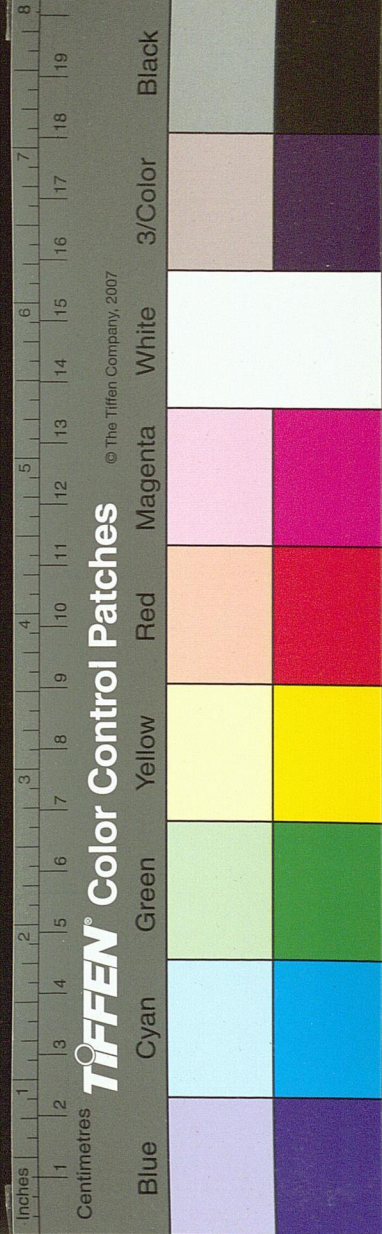
此名綸巾綸音諸葛武侯嘗服  
綸巾執羽扇指揮軍事正此巾  
也因其人而名之今鮮服者  
有染隨品官之大小為多寡兩  
旁暨後以金線屈曲為文此卿  
大夫之章非士人之服也嘉靖  
初更定服色遂有限制

帽大 巾儒



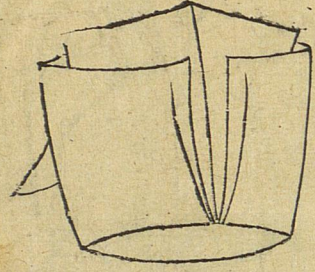
古者士衣逢掖之衣冠章  
甫之冠此今之士冠也凡  
舉人未第者皆服之  
嘗見稗官云國初高皇  
幸學見諸生班級用巾因  
賜遮蔭帽此其制也今起  
家科貢者則用之

國家圖書館 NATIONAL CENTRAL LIBRARY, TAIWAN, R.O.C.

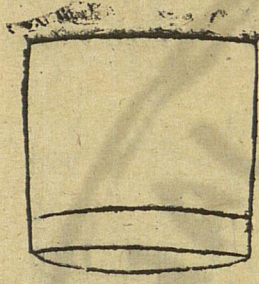




巾坡東



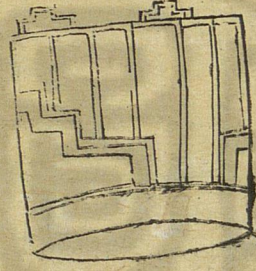
巾方



巾有四墻墻外有重墻比內墻少  
殺前後左右各以角相向著之則  
角界在兩眉間以老坡所服故名  
嘗元其畫像至今冠服猶爾

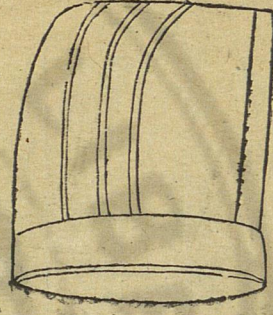
此即古所謂角巾也制同雲巾特  
少雲文相傳國初服此取四方平  
定之意

巾雲



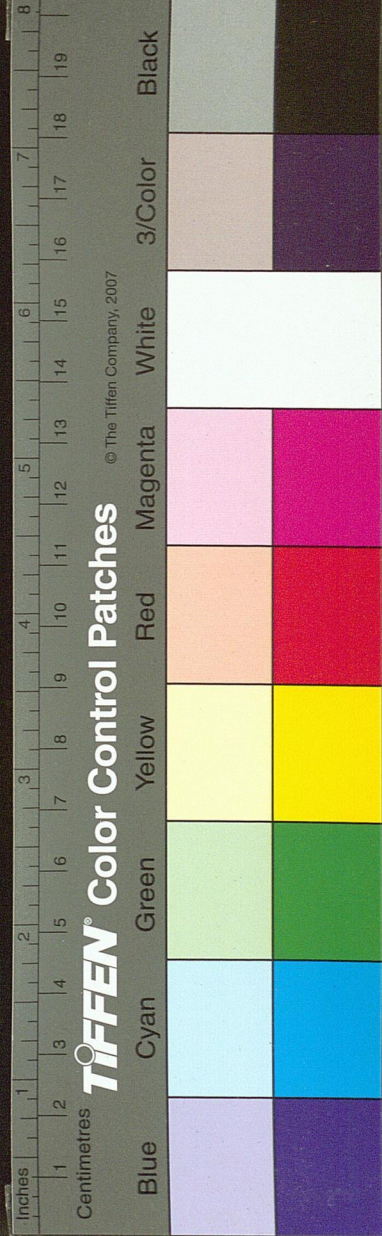
有梁左右及後用金線或素線  
屈曲為雲狀制頗類忠靖冠士  
人多服之

巾五治



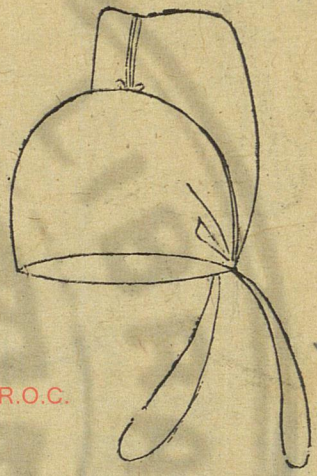
有三梁其制類古五積巾俗名  
緇布冠其實非也士人嘗服之

國家圖書館 NATIONAL CENTRAL LIBRARY TAIWAN, R.O.C.



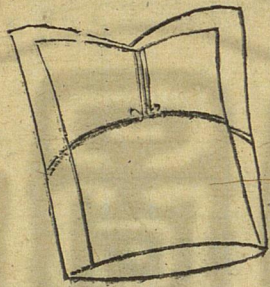


唐巾



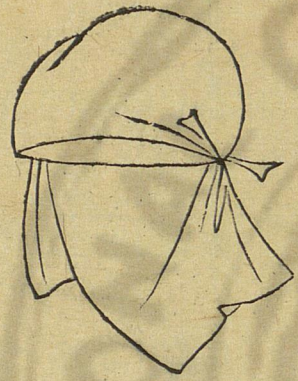
其制類古毋追嘗見唐人畫像帝王多冠此則固非士大夫服也今率為士人服矣

漢巾



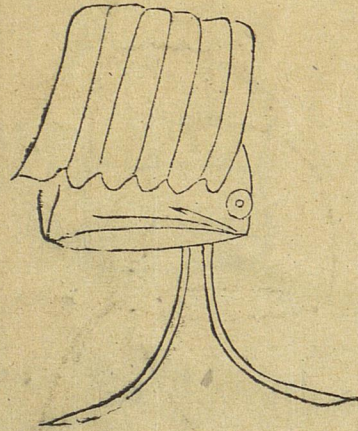
漢時衣服多從古制未有此巾疑厭常喜新者之所為假以漢名耳

四周巾



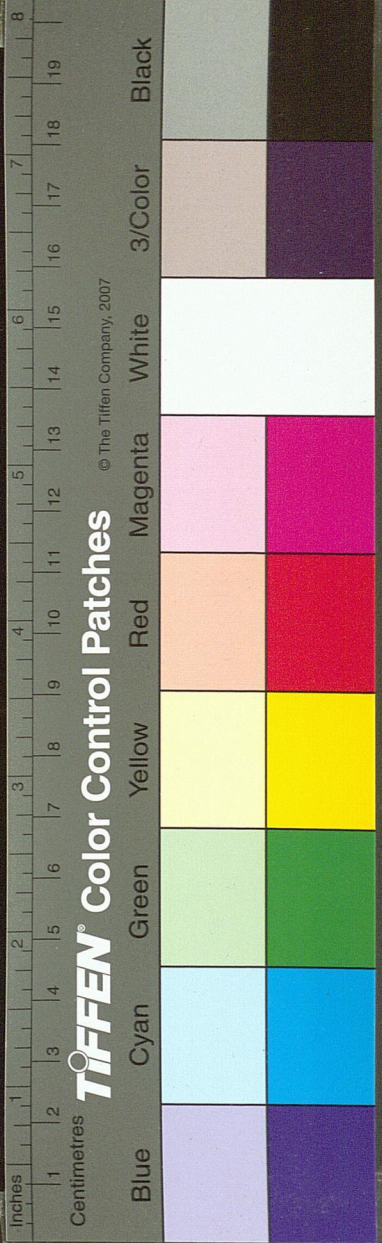
以幅帛為之從廣皆一尺有餘用之裹頭大都燕居之飾緇黃雜用非士服也

純陽巾



一名樂天巾頗類漢唐二巾頂有寸帛襞積如竹簡垂之於後曰純陽者以仙名而樂天則以人名也

國家圖書館 NATIONAL CENTRAL LIBRARY, TAIWAN, R.O.C.

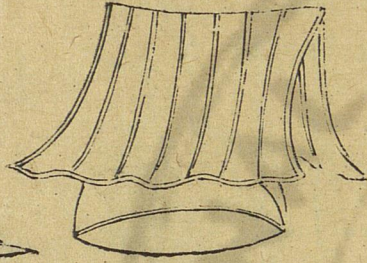




巾結

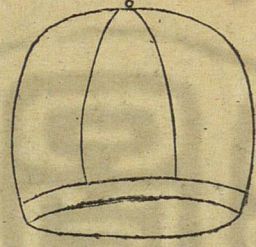


巾將



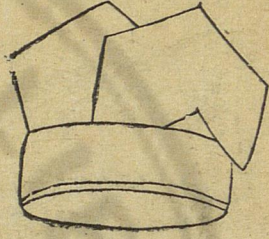
以尺帛裹頭又綴片帛於後其末下垂俗又謂之紮巾結巾制頗相類

子帽



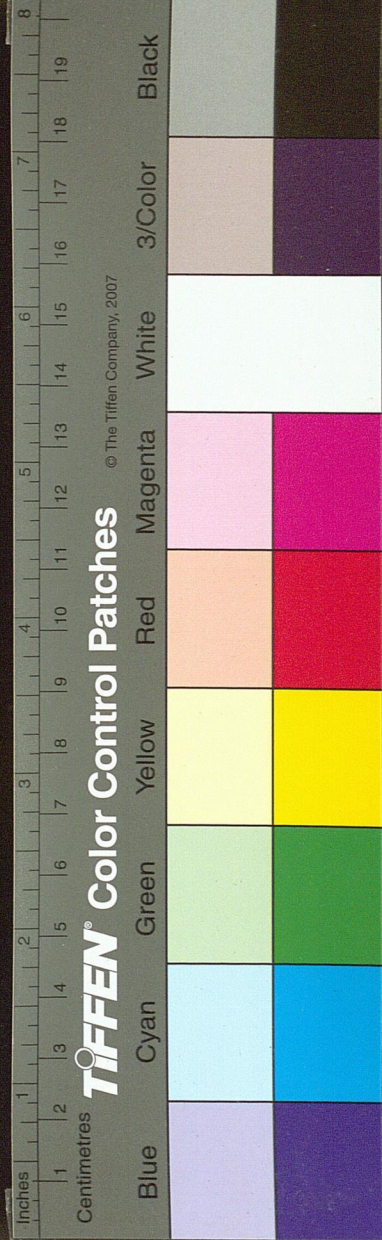
帽者冒也用帛六瓣縫成之其制類古皮弁特縫間少玉飾耳此為齊民之服

巾人老



嘗見釋官云國初始進巾樣高皇以手按之使後曰如此却好遂依樣為之今其制方頂前仰後俯惟者老服之故名老人巾

國家圖書館, NATIONAL CENTRAL LIBRARY, TAIWAN, R.O.C.



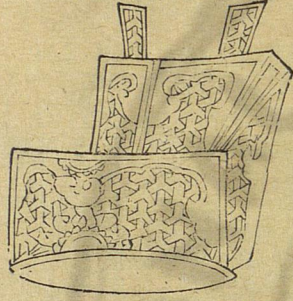


纏粽帽



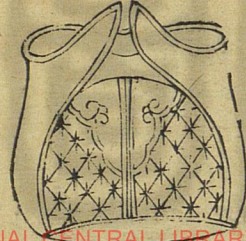
以藤織成如冑  
亦武士服也

金貂巾

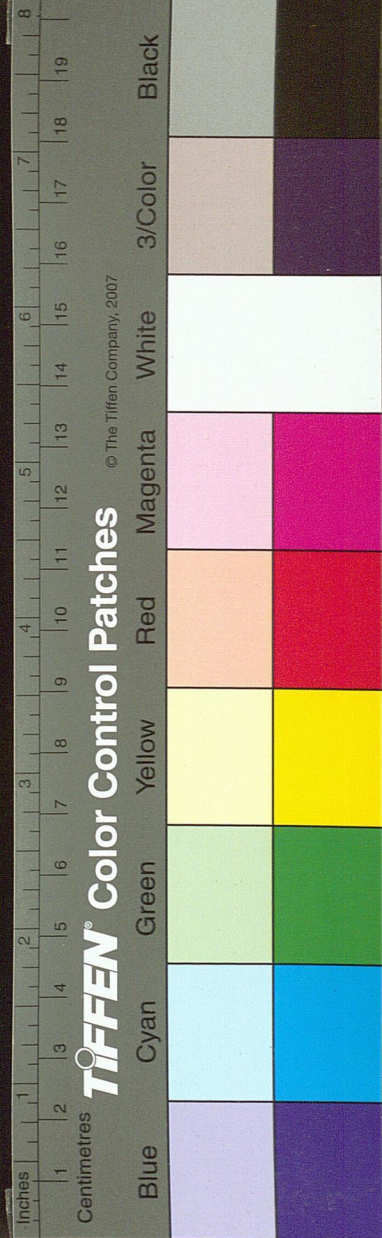


其制即幘也古惟侍中親近之冠  
則加貂蟬故有汗貂及貂不足之  
說茲特綴以金耳非貂也疑優伶  
輩傳粉時所服非古今通制也

鳳翅盔 蝦鬚盔



盔即冑之屬左右有珥  
似翅故曰鳳翅所謂蝦  
鬚不知其義常見神圖  
有之疑出於俗工之粧  
飾耳





帽 鞞

笠 氊

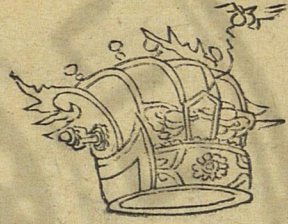
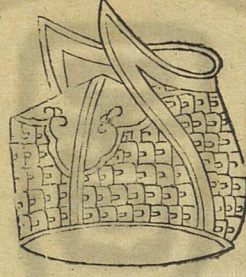


皮爲之以獸尾緣簷  
或注於頂亦胡服也

此胡服也胡人謂之  
白題杜詩馬驕朱汗  
落胡舞白題斜是也

帽 山 三

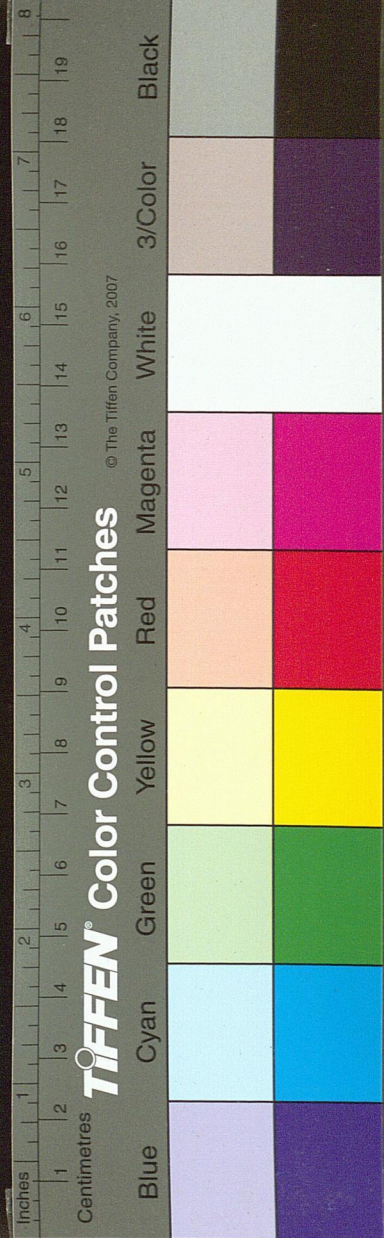
冠 髮 束



一名二郎帽皆出自閩  
巷相傳不知其制所始

此即古制嘗見三王畫  
像多作此冠名曰束髮  
者亦以屨能撮一髻耳

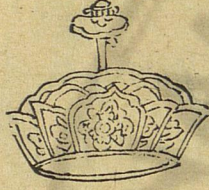
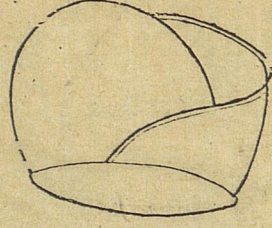
國家圖書館, NATIONAL CENTRAL LIBRARY, TAIWAN, R.O.C.





芙蓉帽

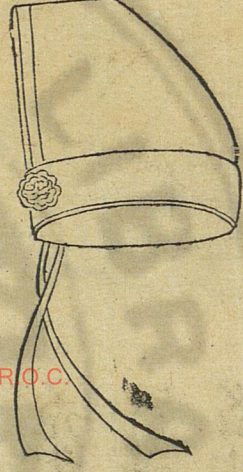
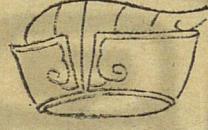
僧帽



自釋迦以金縷僧伽黎  
衣相傳故其衣有無垢  
忍辱之名其帽未之前  
聞諒亦與僧衣同流耳  
秃輩不巾幘然亦有二  
三種有毘盧一盞燈之  
名此云芙蓉者以其狀  
之相似也

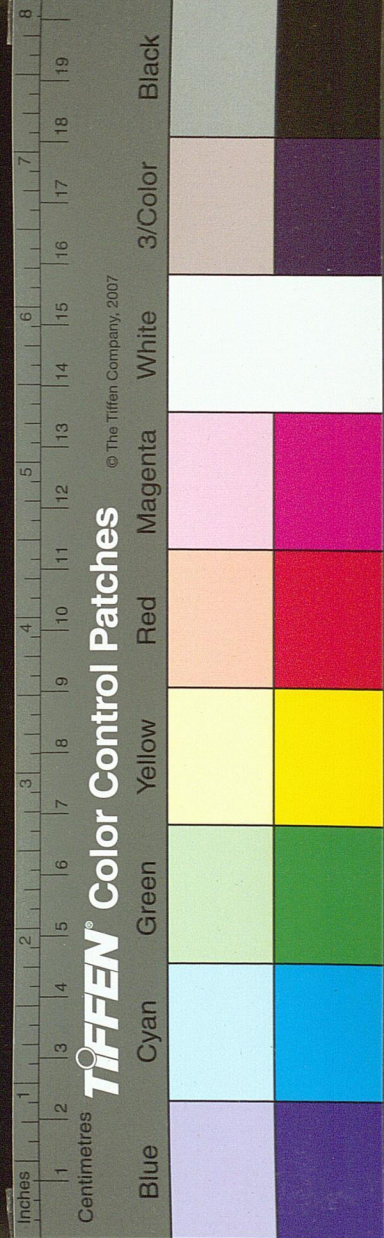
道冠

雷巾



其制小厖可撮其髻  
有一簪中貫之此與  
雷巾皆道流服也  
制頗類儒巾惟腦  
後綴片帛更有軟  
帶二此黃冠服也

國家圖書館, NATIONAL CENTRAL LIBRARY, TAIWAN, R.O.C.



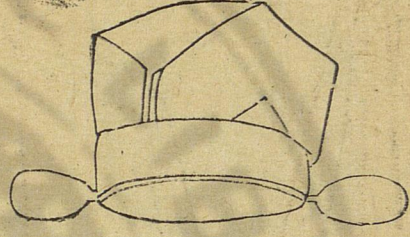
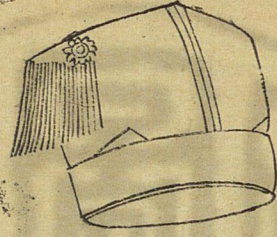


衣



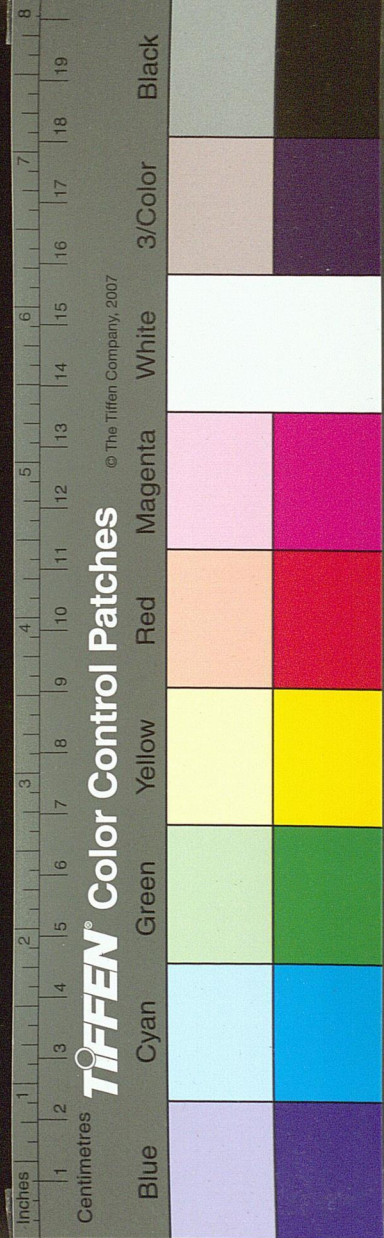
衣上體之  
服古者朝  
服有玄衮  
有毳衣有  
黻衣有緇  
衣有錦衣  
有深衣其  
制多相似

巾 隸 皂 巾 吏



巾不覆額所謂無顏之冠是也其  
頂前後頗有軒輕左右以皂線結  
爲流蘇或插烏羽爲飾此賤役者  
之服也相傳胡元時爲卿大夫之  
冠 高皇以冠隸人示綈辱之

制類老人巾惟多兩翅六  
功曹所服也故名吏巾





二十書虞

山



日



龍



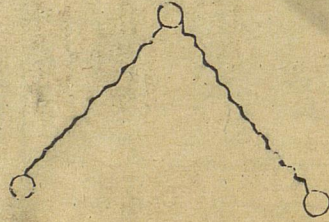
月



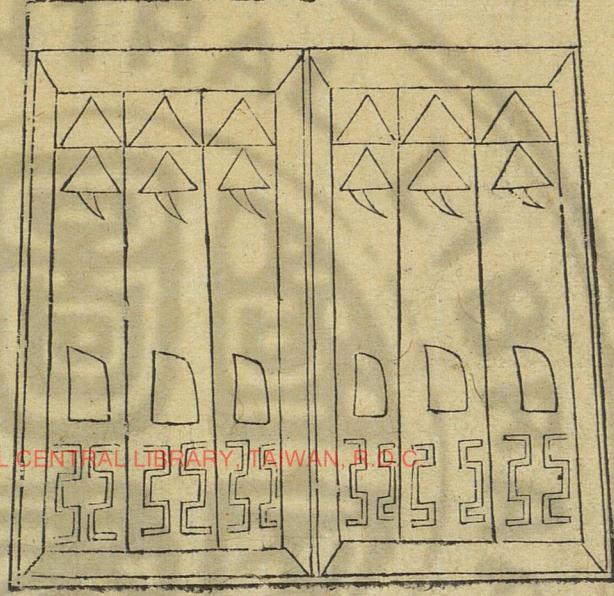
華蟲



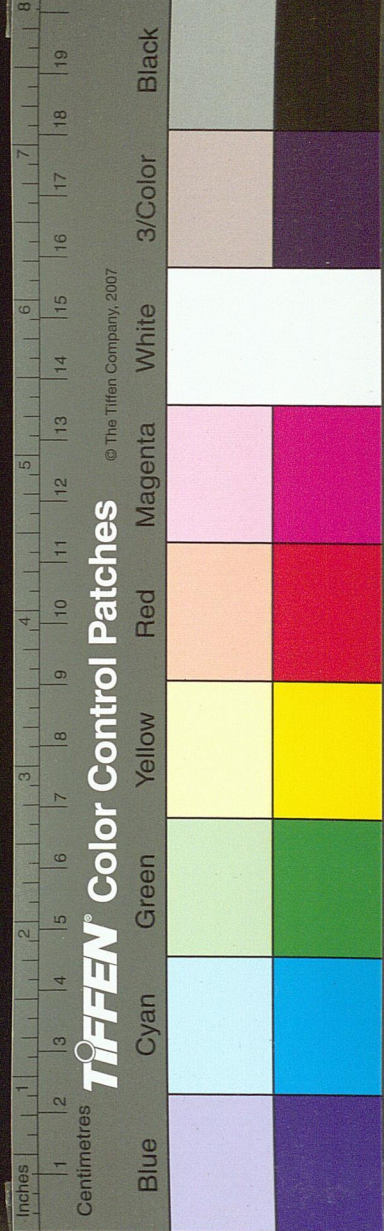
晨



裳



裳下體之  
服古者綉  
裳五色備  
前三幅後  
四幅以纁  
為之刺綉  
於其上





九 戩 衣 圖

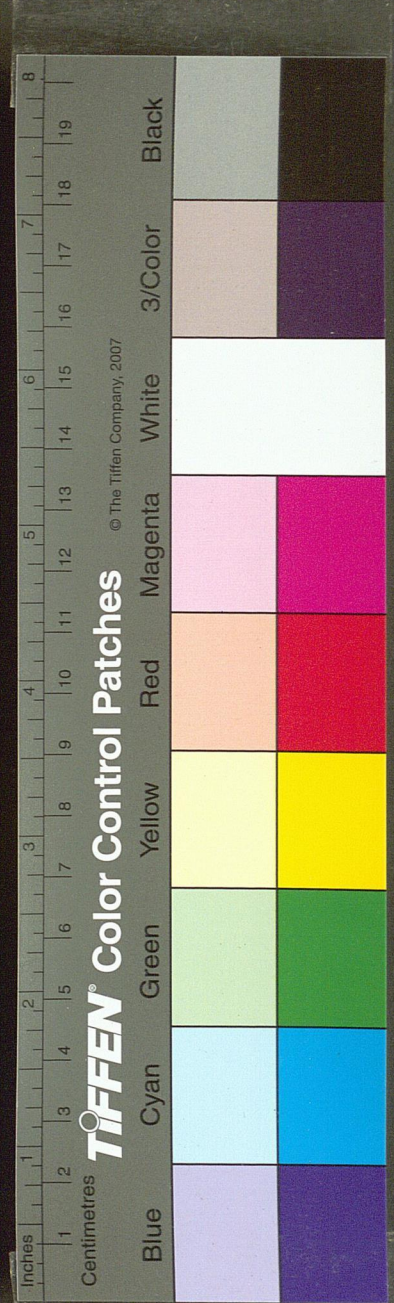


繪龍山華  
 蟲火宗彝  
 五章天子  
 之龍一升  
 一降上公  
 但有降龍  
 龍首卷然  
 故謂之袞

章 服 之 圖

<p>粉米</p>	<p>宗彝</p>
<p>黼</p>	<p>藻</p>
<p>黻</p>	<p>火</p>

國家圖書館, NATIONAL CENTRAL LIBRARY, TAIWAN, R.O.C.





狐裘圖

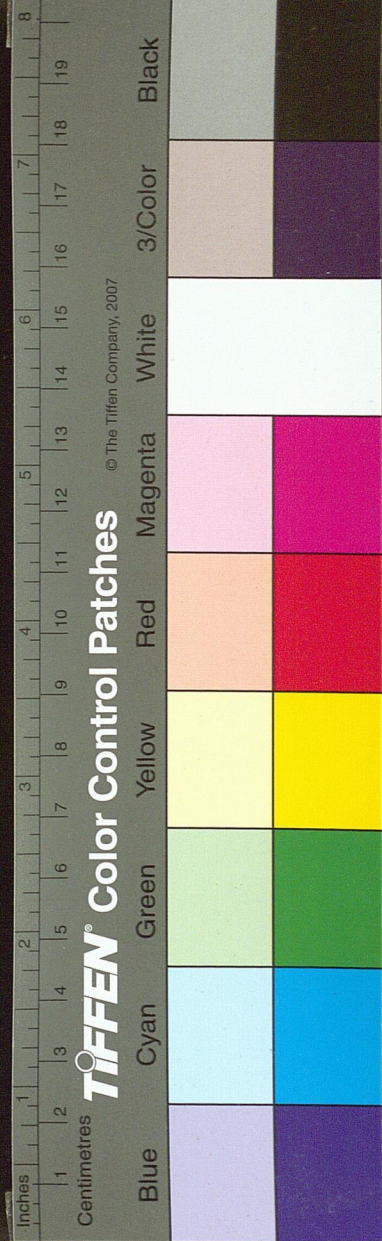


錦衣狐裘  
朝天子之  
服蘇氏曰  
此狐裘狐  
白裘也

九罭繡裳圖

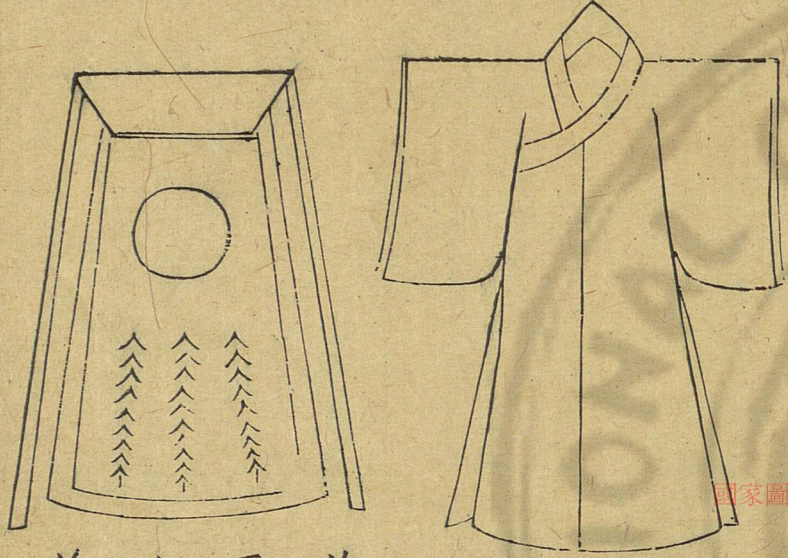


五色備  
謂之繡  
前三幅  
後四幅  
繡以藻  
粉米黼  
黻四章





中單圖 蔽膝圖



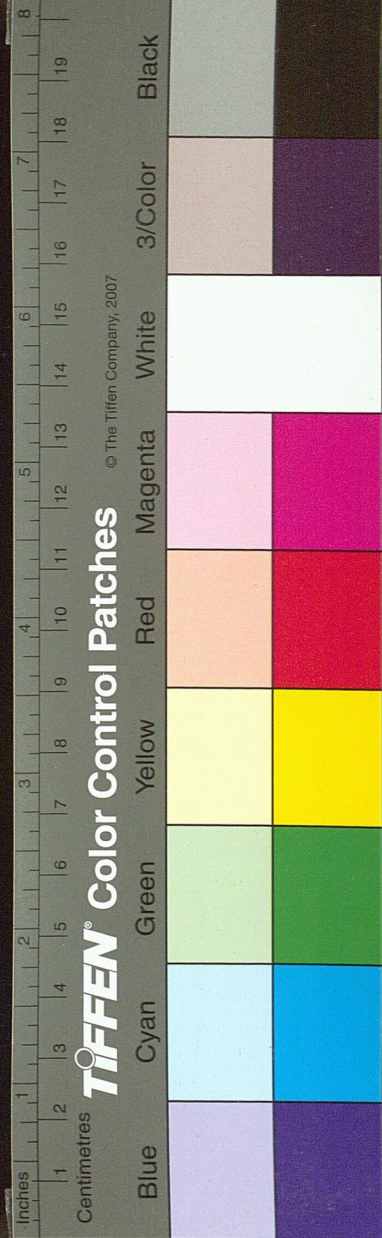
中單祭服其內明衣加  
 以用朱刺綉文以樞領  
 丹者取其赤心奉禱也  
 蔽膝以羅爲表絹爲  
 裏其色纁上下有純  
 去上五寸所繪各有  
 差大夫芾士曰嫁

羔裘圖



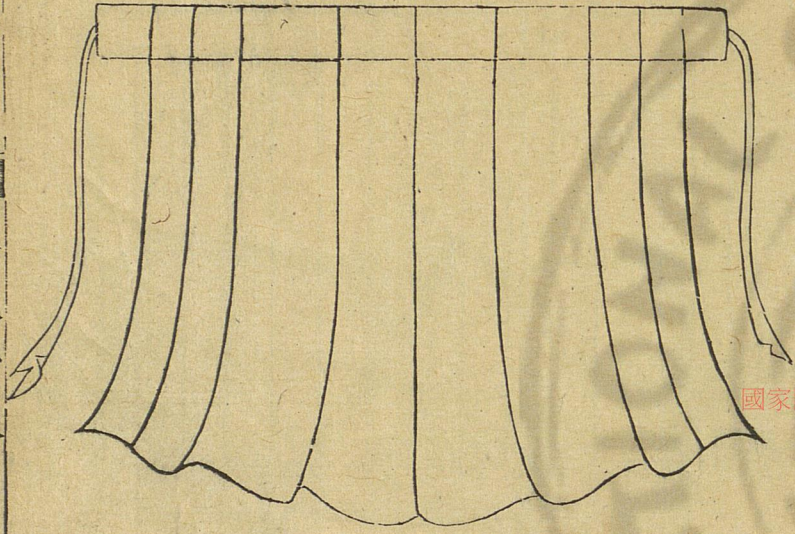
君純羔大  
 夫以豹飾  
 祛裘祛裘  
 皆袂也然  
 袂大而祛  
 袖小

國家圖書館, NATIONAL CENTRAL LIBRARY, TAIWAN, R.O.C.



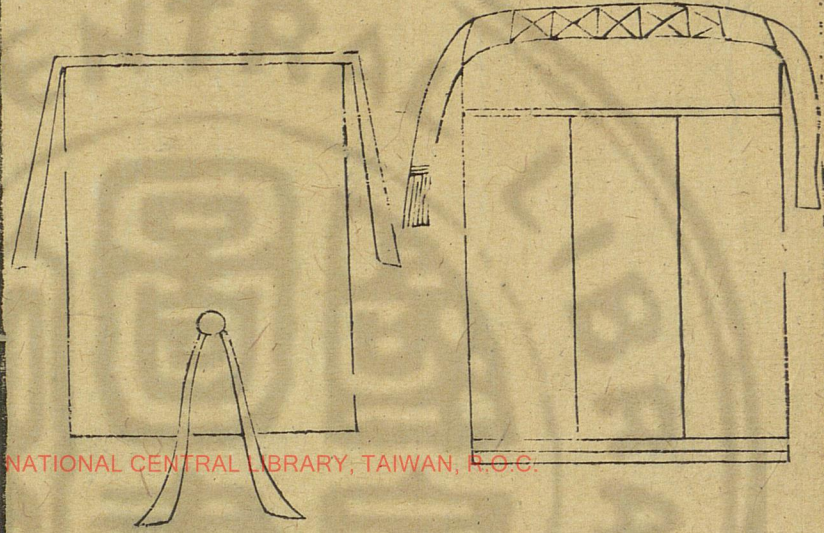


非帷裳圖

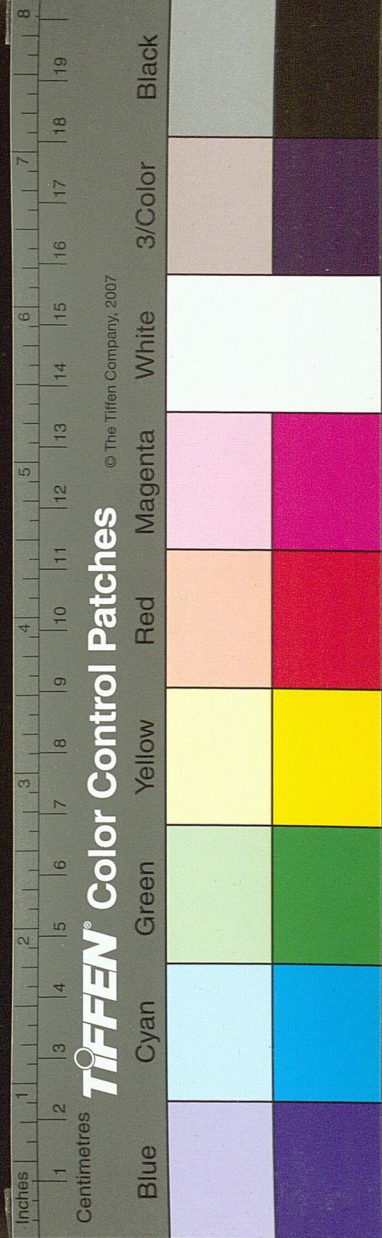


凡裳前三幅  
後四幅象陰  
陽也非帷裳  
則斜裁倒合  
腰半下齊倍  
腰無襞積而  
有殺縫也

芾鞞圖 邪偏圖



芾太古蔽膝之象字當作  
鞞古字通用冕服謂之芾  
其他服謂之鞞以韋爲之  
邪幅偏也邪纏於足  
如今行膝偏束其脛

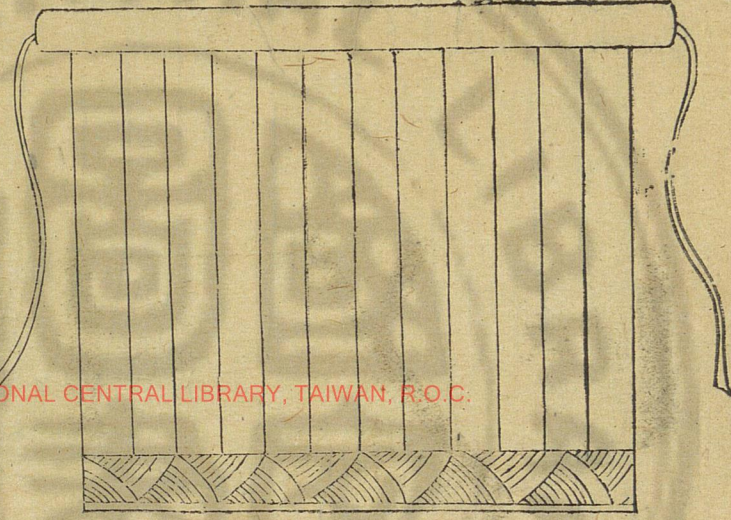




深衣掩袷圖  
方袷



帷裳圖



帷裳是禮服  
取其方正故  
用正幅如帷  
帳即今之腰  
裙也襪是摺  
積是疊即今  
之所謂裙殺

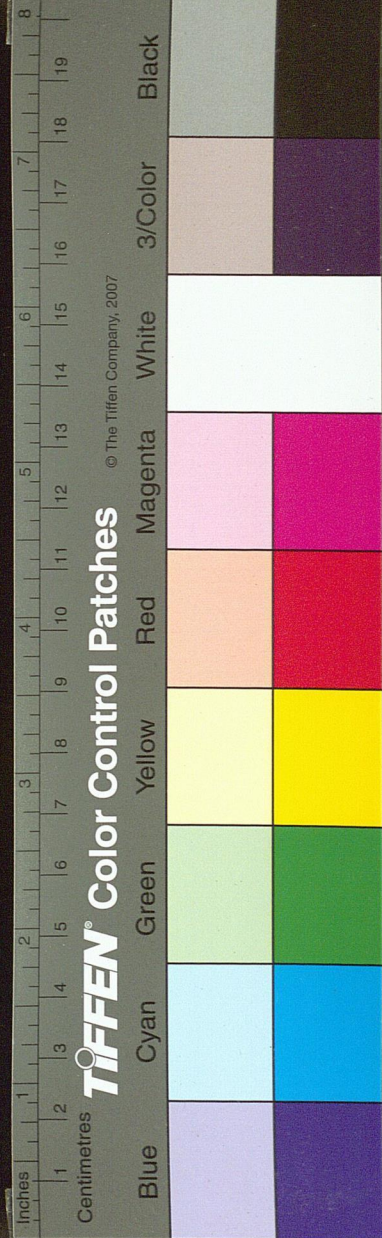
圖會

衣長一卷

廿四

三才圖會  
衣片一卷

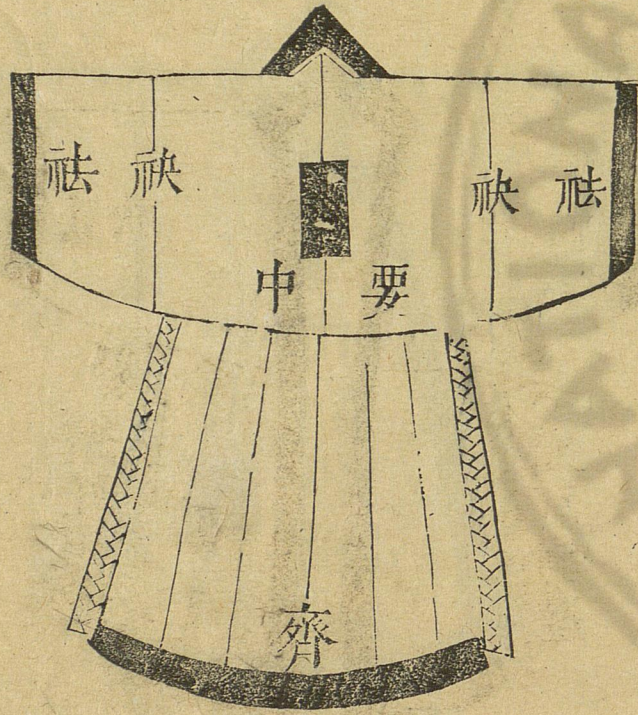
國家圖書館 NATIONAL CENTRAL LIBRARY, TAIWAN, R.O.C.





深衣後圖

袷

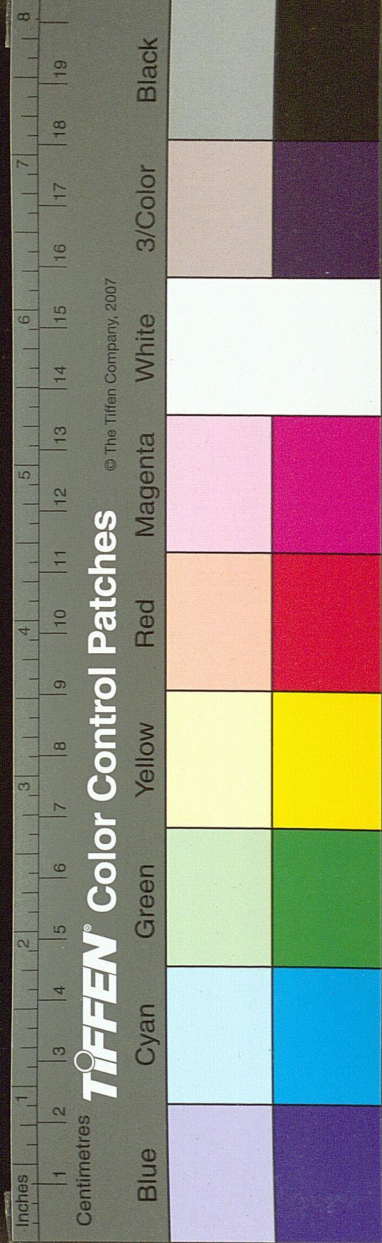


深衣前圖

袷



國家圖書館, NATIONAL CENTRAL LIBRARY, TAIWAN, R.O.C.

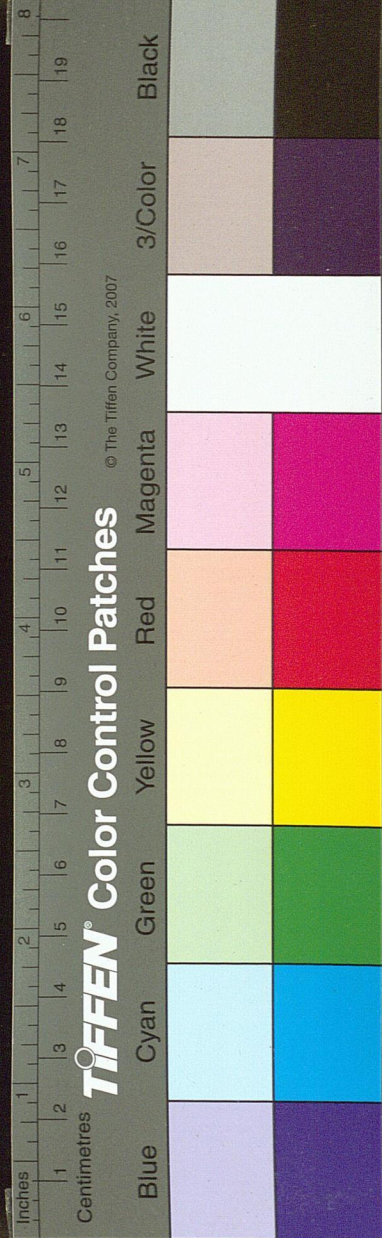




新擬深衣圖



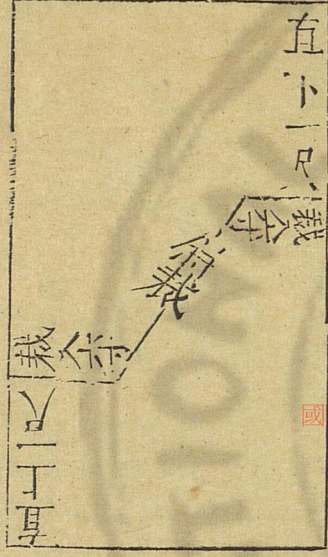
按玉藻脰二寸緣半寸今家禮深衣制度不言袷尺度幾何止言袂緣廣二寸今擬宜如古禮用布濶二寸長如衣身為袷而加緣寸半於其上庶全一衣之制云 按家禮卷首圖有裁衣前後法今併入衣前後圖 按深衣制度乃溫公據禮深衣篇所新製非古相傳者也愚于考正疑其裳制于禮樂衣篇文勢不倫固已著其說矣後又得靈興教繼公說曰衣六幅裳六幅通十二幅吳草廬亦謂裳以六幅布裁為十二片不可言十二幅又但言裳之幅而不言衣之幅尤不可良以教說為是蓋衣裳各六幅象一



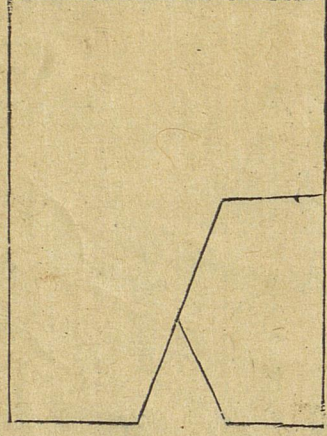


歲十二月之六陰六陽也愚因叅以白雲朱氏之說衣身用布六幅袖用兩幅別用一幅裁領又用一幅交解裁兩片爲內外襟綴連衣身則衣爲六幅矣裳用布六幅裁十二片後六片如舊式前四片綴連外襟二片連內襟上衣下裳通爲十二幅則于深衣本章文勢順矣舊製無襟故領微直而不方今以領之兩端各綴內外襟上穿着之際右襟之末斜交於左脅左襟之末斜交于右脅自然兩領交會方如矩矣或謂不連裳不殊通一幅布爲之如此則無腰矣玉藻謂齊倍腰者何也

裁衽圖

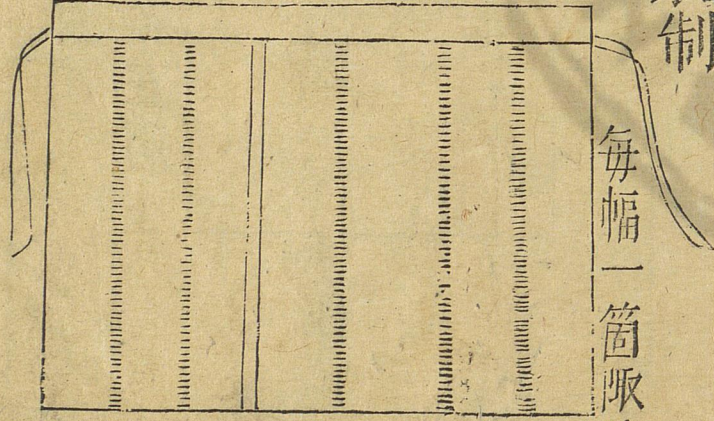


兩衽相疊圖



後四幅 前三幅

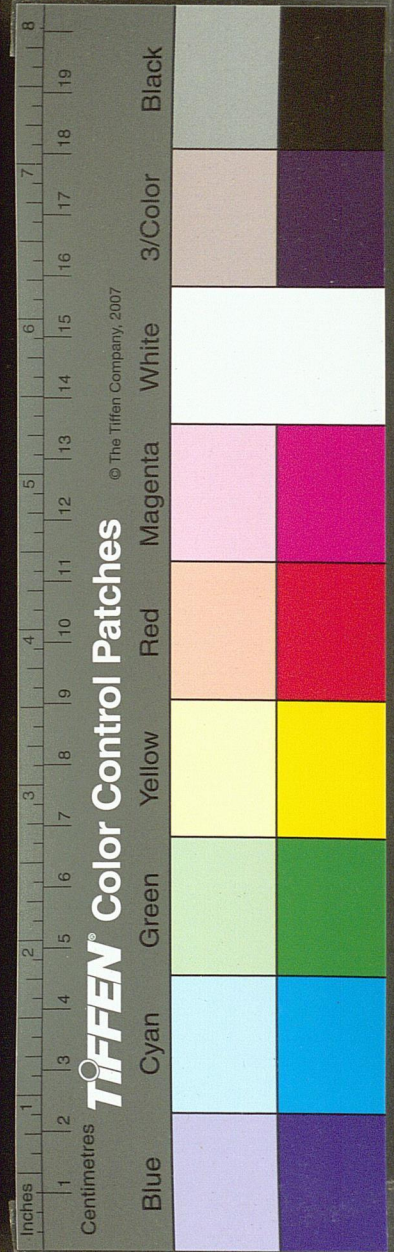
裳制



三下圖會

衣長一卷

廿七

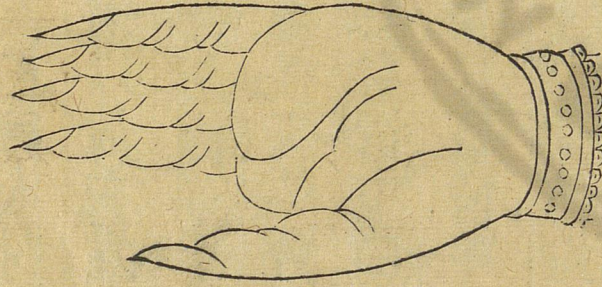




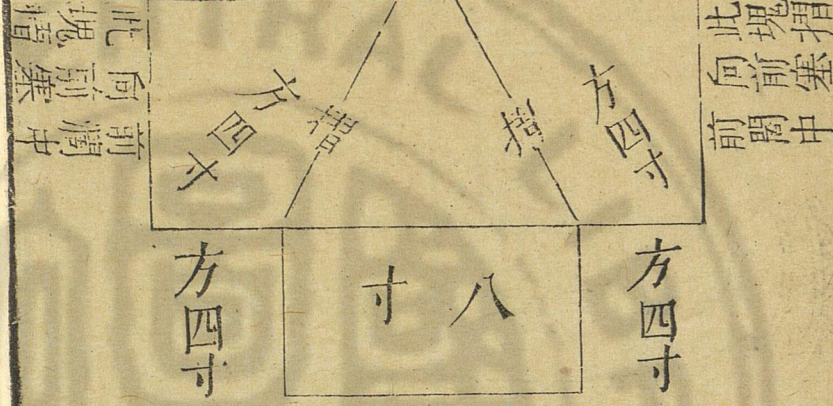
屈指量寸法圖



伸指量寸法圖



濶寸 圖 領 辟 裁 濶寸  
寸 五 尺 一 長 寸



留此塞後濶中

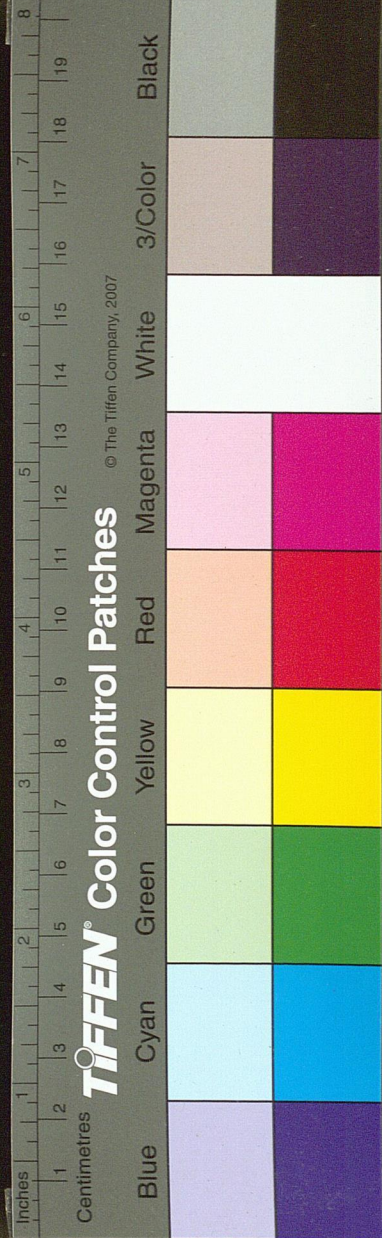
摺轉一  
邊向右

右適

摺轉一  
邊向左

左適

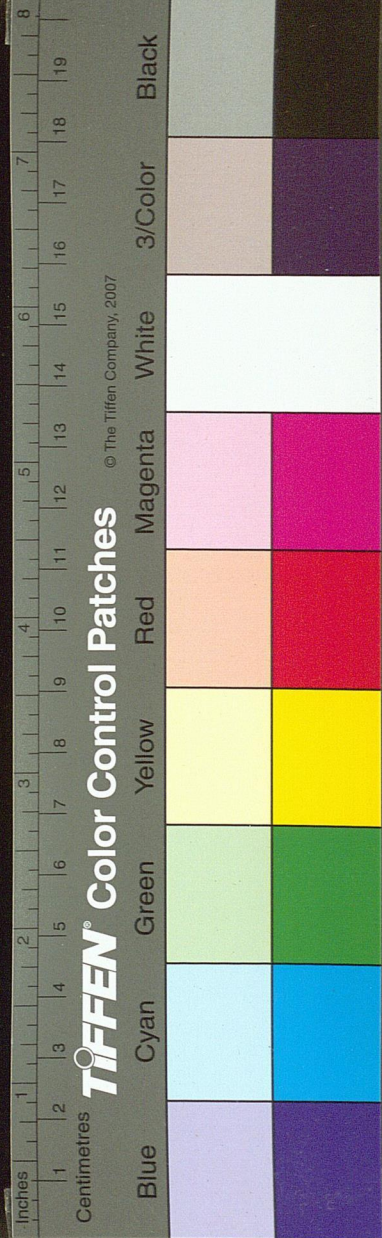
縫





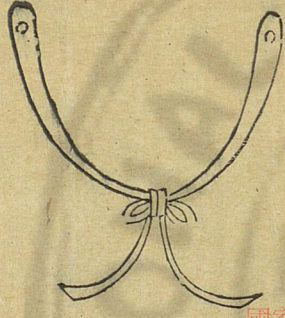
家禮裁深衣及衰服皆用中指中節爲寸蓋以人身有長短雖周尺準以貨泉者楊氏亦謂其於中人中指之寸長短畧同然終不可爲定法也指節人人殊與人身相爲短長鍼經以之定俞穴無有差爽者况用以裁衣豈有不稱體也哉但世人往往昧於取法今取鍼經圖刻于其上而以其定法著之於下使裁衣者有所擬依云鍼經云中指第二節內度兩橫文相去爲一寸又云中指中節橫文上下相去長短爲一寸謂之同身寸註云若屈指即旁取指側中節上下兩文角相去遠近爲一寸若伸指即正取指

中自上節下橫文至中節中從上第一條橫文長者相去遠近爲一寸指屈指之寸長短亦相符合然人之身手指或有異者至指指文亦各不同更在詳度之也

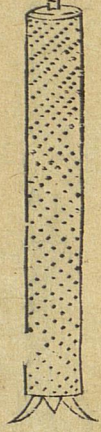




冠綾圖



瑱



圖



笄今簪也而士以骨爲之大夫以象爲之綾以紘繫笄順頤而下結之 垂其飾於前曰綾

正義注云瑱塞耳也充耳是已天子以玉諸侯以石充耳以紘懸瑱當耳也紘用絲線織之天子諸侯五色臣三色君子借老篇瑱言夫人服飾

國家圖書館, NATIONAL CENTRAL LIBRARY, TAIWAN, R.O.C.

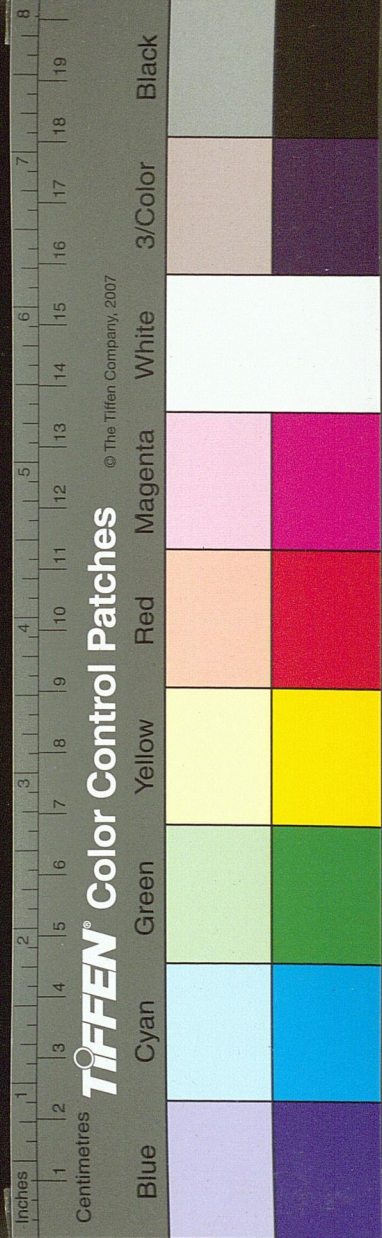
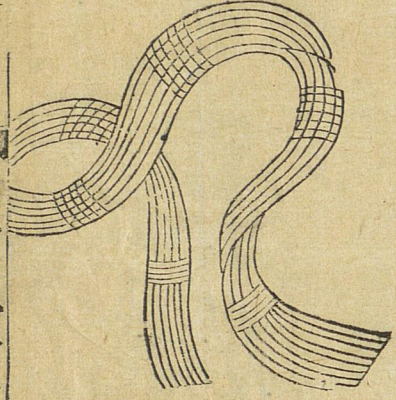




圖 帨



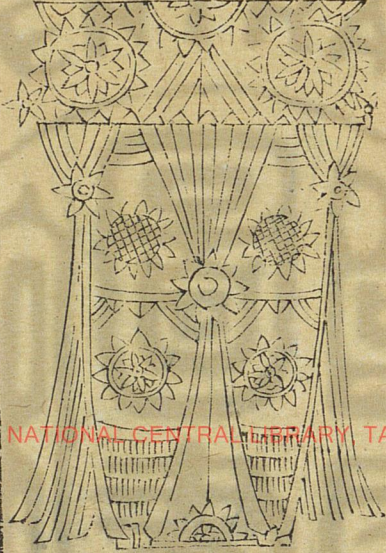
禮記婦事舅姑左佩紛  
 院注紛帨拭手之巾也

圖 縹

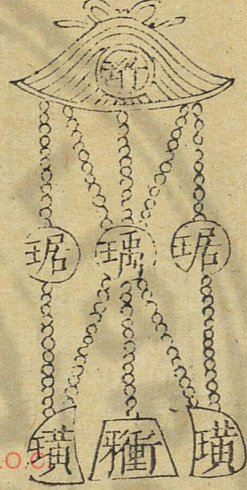


爾雅云婦人之禕謂之縹孫氏  
 云禕帨巾也故集傳曰婦人之  
 禕毋戒女而為之施衿結帨也

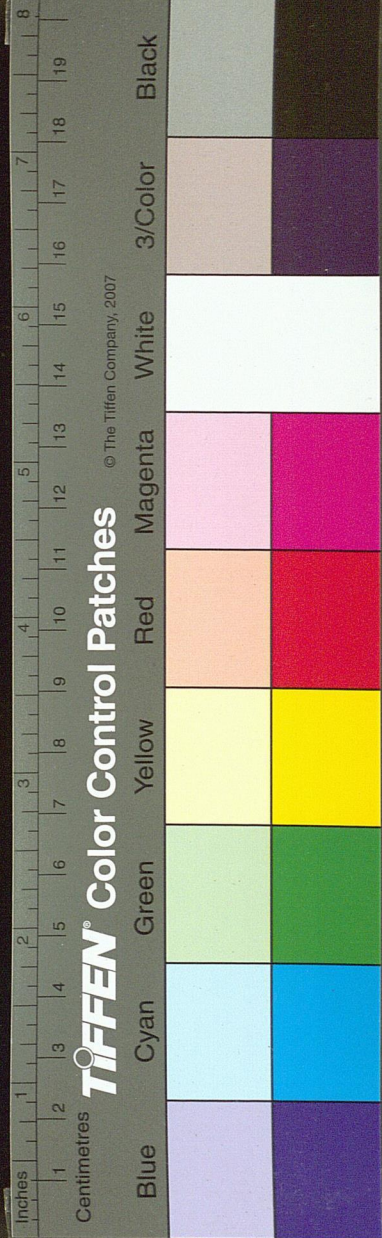
圖 綬 圖 佩 雜



玉藻曰古之君子必佩玉  
 天子佩皇而玄組綬公侯  
 佩玄玉而朱組綬大夫佩  
 蒼玉而純組綬士佩瑀珉  
 而緼組綬以其貫士綉受  
 也



雜佩者左右佩玉也上橫  
 曰珩繫三組貫以璜珠中  
 組之半貫瑀末懸衝牙兩  
 旁組各繫瑀璜又兩組交  
 貫於瑀上繫珩下繫璜行  
 則衝牙觸璜而有聲也

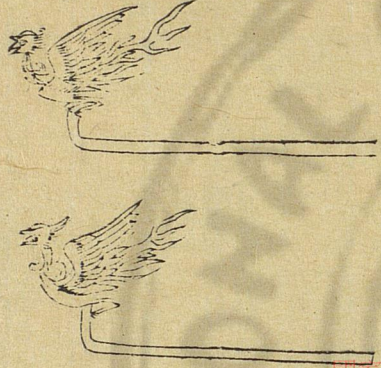




筭圖 拂圖

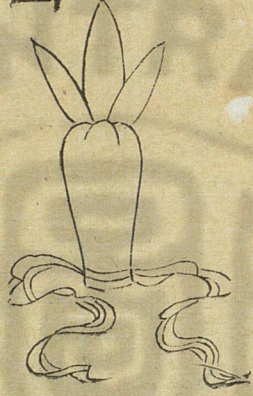


若今之篋兒  
以象骨爲之  
拂所以摘髮

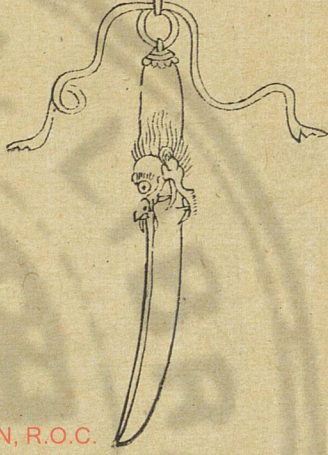


說文箬也其  
端刻雞形而  
士以骨爲之  
大夫以象爲  
之

鞞圖 觶圖



古注云鞞脊也以  
朱韋爲之射以彊  
脊右手食指將指  
無名指以遂弦也



狀如錐角以象骨  
爲之頭以解結

國家圖書館 NATIONAL CENTRAL LIBRARY, TAIWAN, R.O.C.

