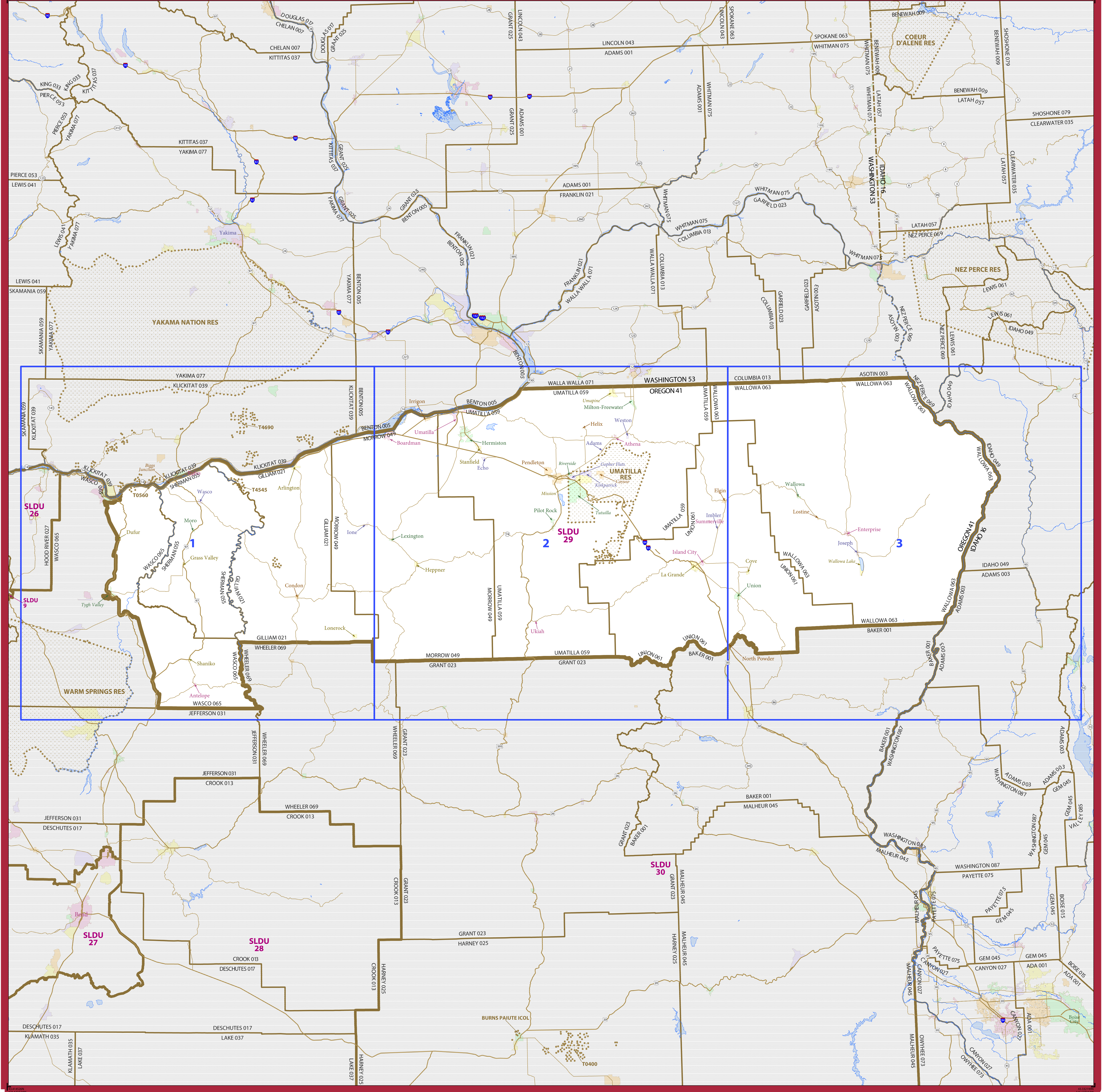


STATE LEGISLATIVE DISTRICT REFERENCE MAP: State Senate District 29 (Oregon)



LEGEND

SYMBOL DESCRIPTION	SYMBOL	LABEL STYLE
International	--- ---	CANADA
Federal American Indian Reservation	[Dotted Pattern]	L'ANSE RES 1880
Off-Reservation Trust Land	[Dotted Pattern]	T1880
State American Indian Reservation	[Dotted Pattern]	Tama Res 9400
State Legislative District - Upper (Senate)	[Thick Blue Line]	SLDU 26
State (or statistically equivalent entity)	---	NEW YORK 36
County (or statistically equivalent entity)	---	ERIE 029
Minor Civil Division (MCD)	---	Bristol town 07485
Consolidated City	[Dotted Pattern]	MILFORD 47500
Incorporated Place ²	[Color Swatches]	Davis 18100
Census Designated Place (CDP) ²	[Color Swatches]	Incline Village 35100

DESCRIPTION	SYMBOL	DESCRIPTION	SYMBOL
Instream	[Blue Line]	Water Body	[Blue Swatch]
U.S. Highway	[Orange Line]	Outside Subject Area	[Grey Swatch]
State Highway	[Yellow Line]		
Other Road	[Thin Line]		
Railroad	[Black Line]		

Where international, state, county, and/or MCD boundaries coincide, the map shows the boundary symbol for the highest-ranking of these boundaries.

1 MCD boundaries are shown in the following states in which some or all MCDs function as general-purpose governmental units: Connecticut, Illinois, Indiana, Kansas, Maine, Massachusetts, Michigan, Minnesota, Missouri, Nebraska, New Hampshire, New Jersey, New York, North Dakota, Ohio, Pennsylvania, Rhode Island, South Dakota, Vermont, and Wisconsin. (Note that Illinois and Nebraska have some counties covered by nongovernmental precincts and Missouri has most counties covered by nongovernmental townships.)

2 Place label color corresponds to the place fill color.
Label colors: Davis Davis Davis Davis

OFF-RESERVATION TRUST LAND NAMES

- T0400 Burns Paiute
- T0560 Celilo
- T4545 Warm Springs
- T4690 Yakama Nation

State legislative districts are delineated based on the results from the 2010 Decennial Census, all other legal boundaries and names are as of January 1, 2010. The boundaries shown on this map are for Census Bureau statistical data collection and tabulation purposes only; their depiction and designation for statistical purposes does not constitute a determination of jurisdictional authority or rights of ownership or entitlement.

Geographic Vintage: 2010 Census (reference date: January 1, 2010)
Data Source: U.S. Census Bureau's MA/TIGER database (BAS13)
Map Created by Geography Division: May 18, 2013

Projection: Albers Equal Area Conic
Datum: NAD 83
Spheroid: GRS 80
1st Standard Parallel: 42 42 46
2nd Standard Parallel: 45 34 55
Central Meridian: -120 34 56
Latitude of Projection's Origin: 41 59 44
False Easting: 0
False Northing: 0

The plotted map scale is 1:140000

INDEX SHEET

- Total Sheets: 4
- Index Sheets: 1
- Parent Sheets: 3

NAME: State Senate District 29
ENTITY TYPE: State Legislative District - Upper (Senate)
ENTITY CODE: 029
ST: Oregon (41)
C01: Gilliam (021), Morrow (049), Sherman (055), Umatilla (059), Union (061), Wallowa (063), Wasco (065)

SLDU REF MAP INDEX
21544102000