

F

104

-NYP 5

==⊕== PICTURESQUE ==⊕==

NEW LONDON,



THE OLD COURT HOUSE, BUILT 1784.

== CONTAINING ==

→ VIEWS, OFFICIAL TIME TABLES, ←

AND OTHER

MATTERS OF INTEREST.

GARDNER PRINTER.



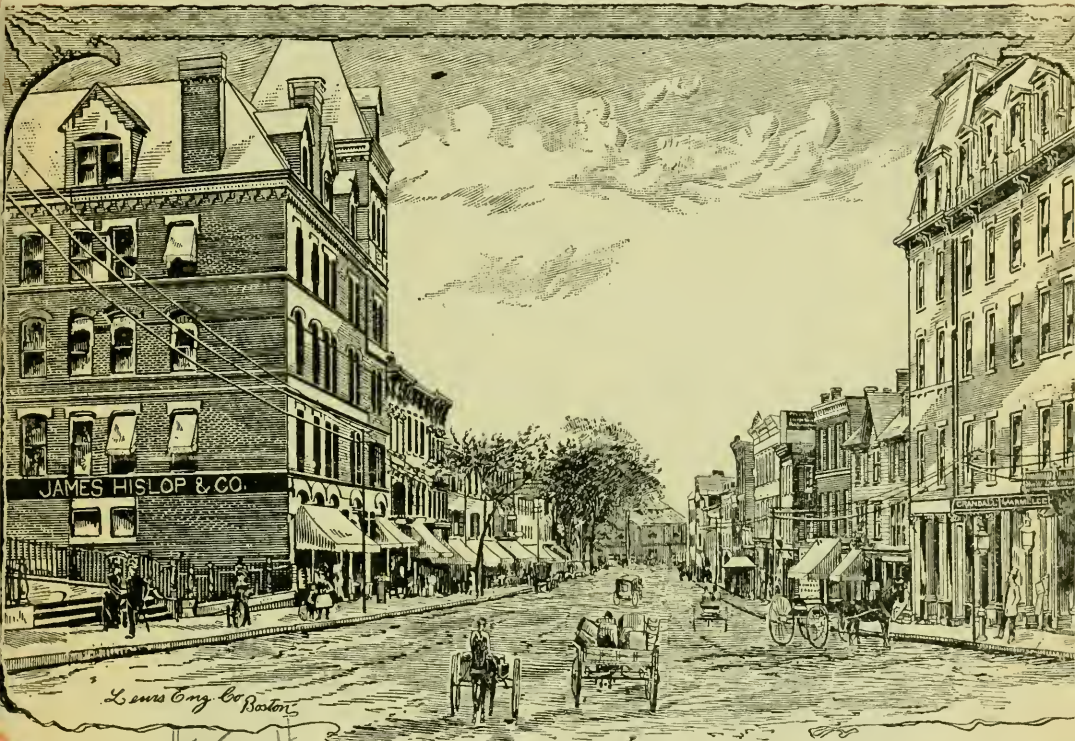
Class F104

Book .N9P5



PICTURESQUE
NEW LONDON, CT.

MAY, 1891.



— CONTAINING —

— VIEWS, TIME TABLES —

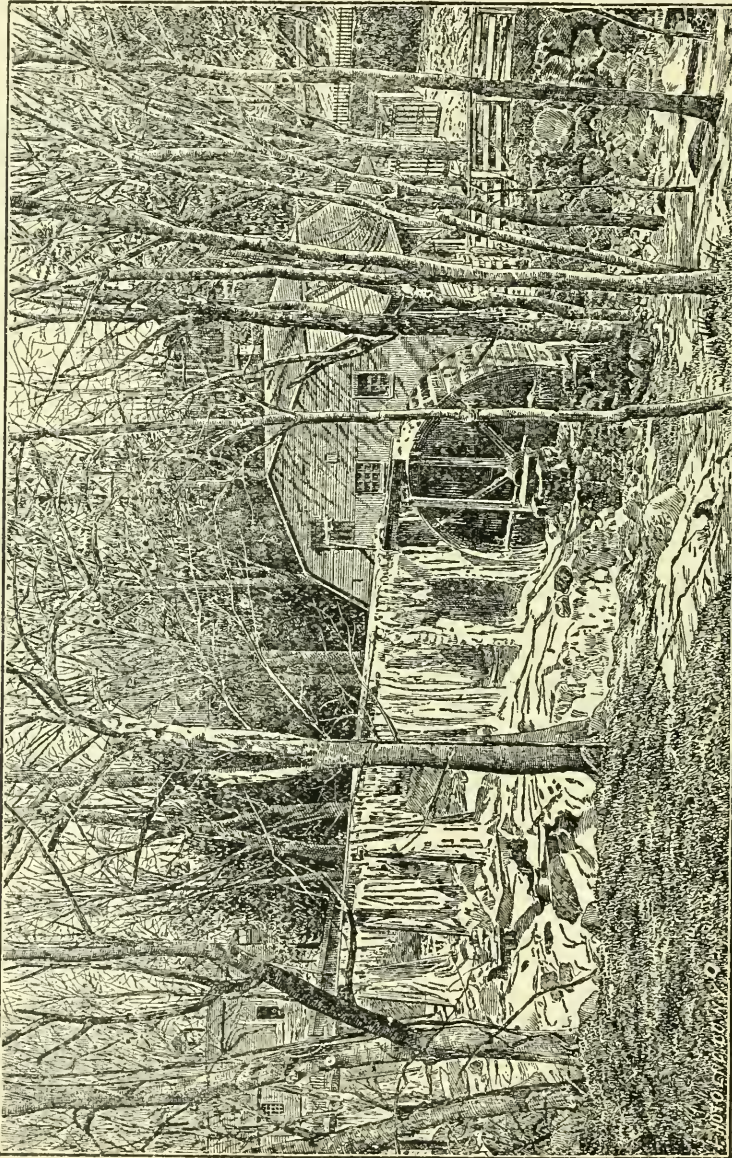
— AND OTHER —

MATTERS OF INTEREST.

COPYRIGHTED AND PUBLISHED BY
CARL JAY VIETS, 4 MAIN STREET,
1891.



Flot
11895



THE OLD TOWN MILL, ERECTED 1650.

SEE THE
 "OLD TOWN MILL"
 SPOONS,

AT

W. H. Saxton's,
 75 STATE ST.

Dr. W. B. KEENEY,

DENTIST,

Over Starr's Drug Store,

No. 48 STATE STREET.

SPRING STYLES
 IN
DERBY HATS,
 SPRING SHADES
 IN
GLOVES,
 THE LATEST STYLES IN

NECKWEAR,

AT THE

HAT BOX,

51 STATE STREET,

YOUAN'S Milli Secundus **HATS,**

C. C. PERKINS.

HUSTACE & ANDERSON,

Dealers in

DIAMONDS,

WATCHES,

CLOCKS,

MUSICAL BOXES,

JEWELRY,

SILVER WARE,

OPERA GLASSES,

CHARTS,

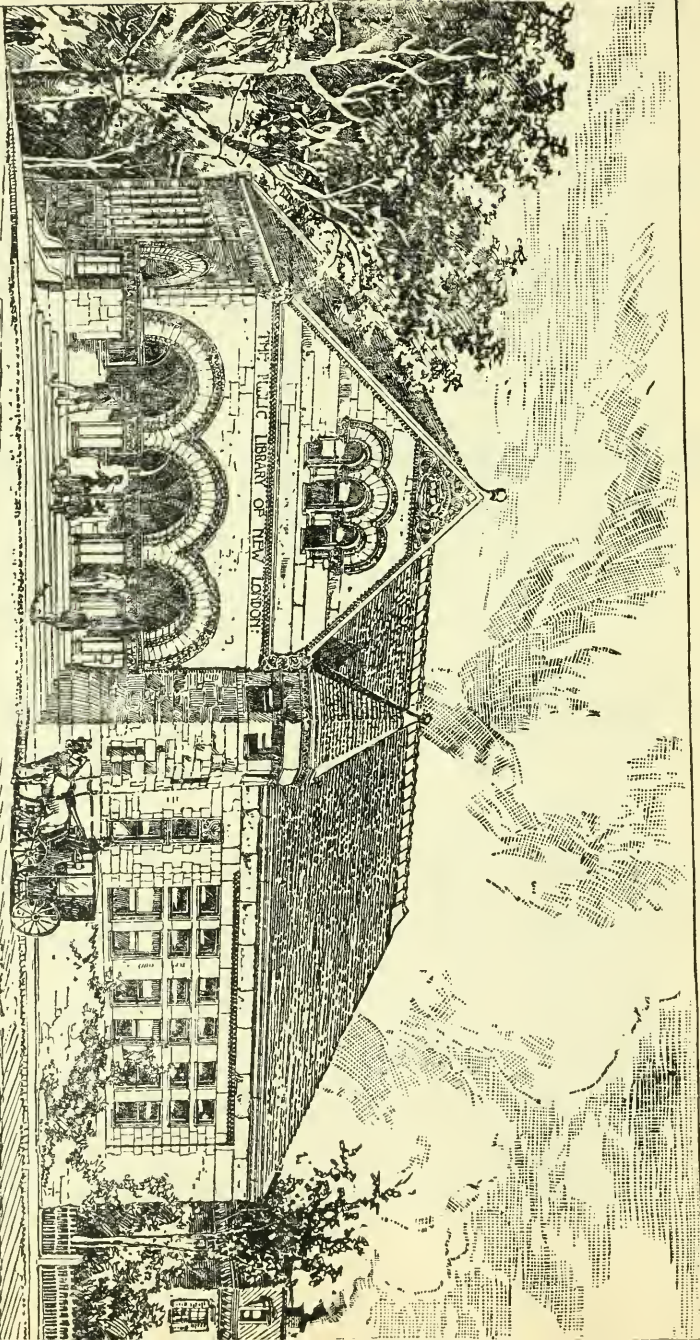
COMPASSES,

SPECTACLES, and

EYE GLASSES.

Hustace & Anderson,

25 BANK STREET.



From Harper's Weekly.

PUBLIC LIBRARY, HUNTINGTON STREET.

Copyright, 1884, by Harper & Brothers.

Chas. S. Smith

THE RACKET,

Fancy Dry Goods,
LADIES AND GENT'S
FURNISHINGS.

Our Motto is

Under Buy and
Under Sell.

*Come and see the difference be-
tween Cheap Goods and selling
Good Goods Cheap.*

BUNN,

No 16 MAIN STREET.

NEW LONDON

INSURANCE AGENCY,

J. G. Learned & Sons,

ESTABLISHED 1847.

OFFICE, SAVINGS BANK BUILDING,
MAIN STREET.

FIRE, MARINE AND LIFE
INSURANCE.

Foreign Drafts to all parts of
the world.

"Always with You"

A. HOBRON & SON,

Specialists in Lenses for the Eye,

Fitted with the best modern appli-
ance for determining the errors in re-
fraction and want of accommodation,
and ready at any time (when there is
sufficient daylight) to adjust lenses to
the eyes. Don't neglect this impor-
tant matter but attend to it for Eye-
sight is of paramount importance.

A. HOBRON ^{AND} SON,

Eye Specialists.

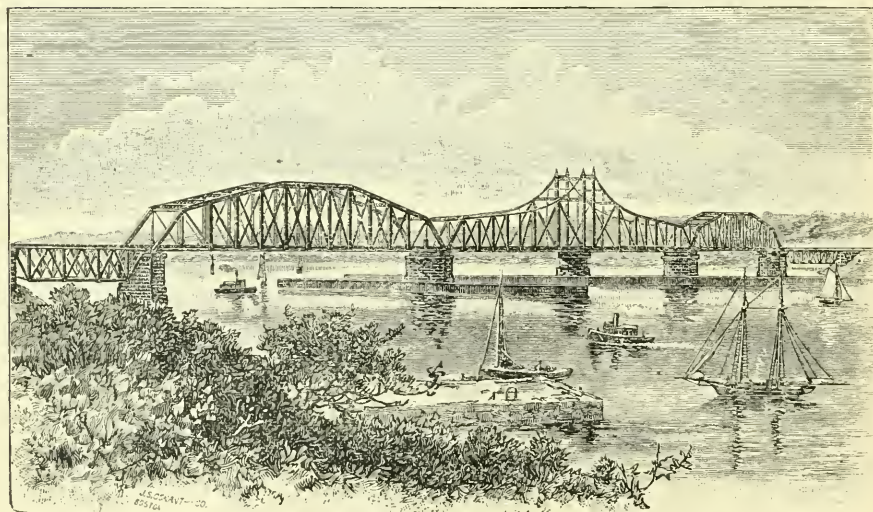
63 STATE STREET,

NICHOLS & HARRIS

55 STATE STREET,

ARE THE LEADING DRUGGISTS OF
NEW LONDON.

They have five licensed Phar-
macists and give special attention
to the compounding of Physicians
Prescriptions and Family Medi-
cines. Fine Soda and Mineral
Waters on draught and in Siphones
and a large variety of Mineral
Waters in Bottles. Sponges,
Chamois Skins and Fine Toilet
Articles a specialty. Patent Medi-
cines of all kinds and all goods
sold at low prices. Telephone
Connection and goods deliverd.



TWO VIEWS OF RAIL ROAD BRIDGE.

PAINÉ & TINKER,

— DEALERS IN —

FANCY GOODS,

83 STATE ST.,

New London, Conn.

COTTAGE

CAFÉ,

101 STATE ST.,

New London, Conn.

Elegantly appointed and centrally located, with private rooms for ladies. Meals served in latest and most approved style. Game in season. Weddings and parties a specialty.

F. S. JONES.

SCHOFIELD & TINGLEY,

ARTISTIC

PHOTOGRAPHERS

59 State Street,

NEW LONDON, - - - - - CONN.

Furnish the best work in their line as low as the lowest. Viewing in all its branches. Children's Pictures a specialty.

Office Hours—9 a. m. to 4 p. m.

C. S. BRADDOCK.

N. C. STARK.

BRADDOCK & STARK,

REAL ESTATE, INSURANCE

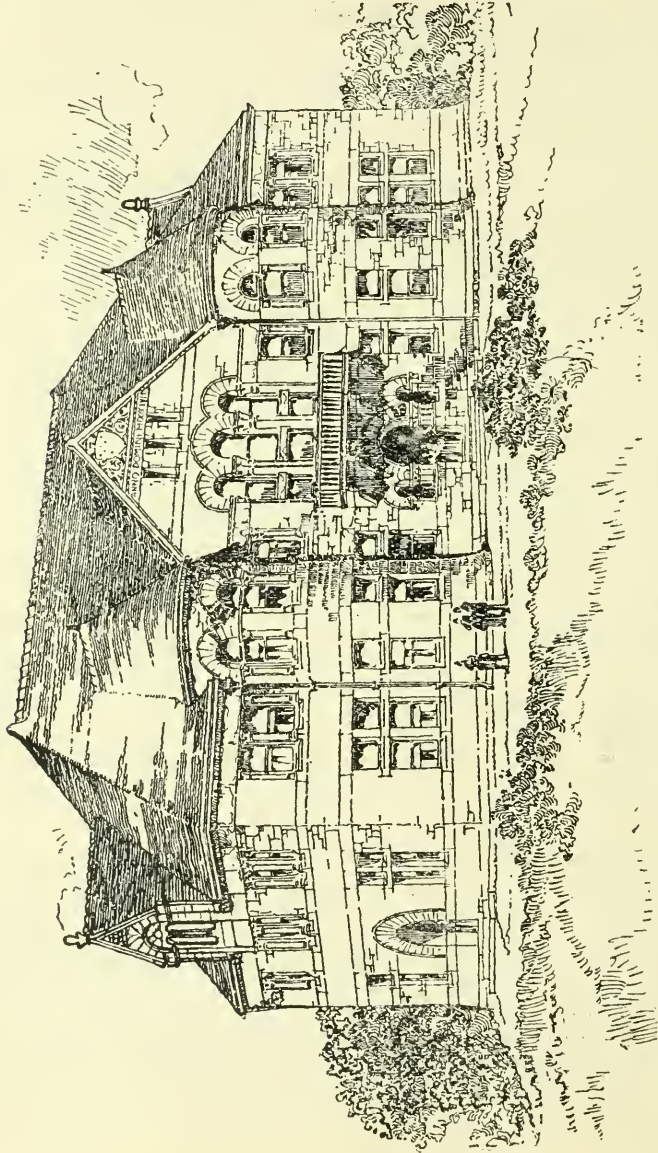
AND

Mortgage Loan Agency,

Room 29 Harris Building,

NEW LONDON, - - - - - CONN.

Collecting Rents and Caring for Real Estate a Specialty.



WILLIAMS MEMORIAL SCHOOL, BROAD STREET.

J. H. HENFIELD,

(Successor to HENFIELD & STARR.)

26 State Street,

DRY GOODS, FANCY GOODS

—AND—

CARPETINGS

On Three Floors.

FIRST FLOOR—DRESS GOODS—Prints, Ginghams, Cottons, Muslin Underwear, Hosiery, Gloves, Ribbons, Trimmings, etc., etc.

SECOND FLOOR—Brussels and Ingrain Carpetings, Lace Curtains, Portieres, Upholstering, Smyrna and Wilton Rugs.

THIRD FLOOR—Linoleum, Oil Cloths, Straw Matting, Curtain Poles, etc., etc.

Stock complete in all Departments with reliable goods at Low Prices.

J. H. HENFIELD, 26 State St.

Established 1833.

W. P. BENJAMIN & CO.,

Invite your inspection of their
Large Stock of

DRY GOODS

CLOAKS, CARPETINGS, ETC.

We are NOT Undersold in anything.

Strictly One Price!

DRESS GOODS A SPECIALTY.

WALTER R. DENISON,

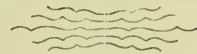


Painter and Decorator,
Wholesale and Retail Dealer in
PAINTS, PAPER HANGINGS, &c.,
1 Bank Street, New London, Conn.

RALPH S. SMITH & SON,



FURNITURE,

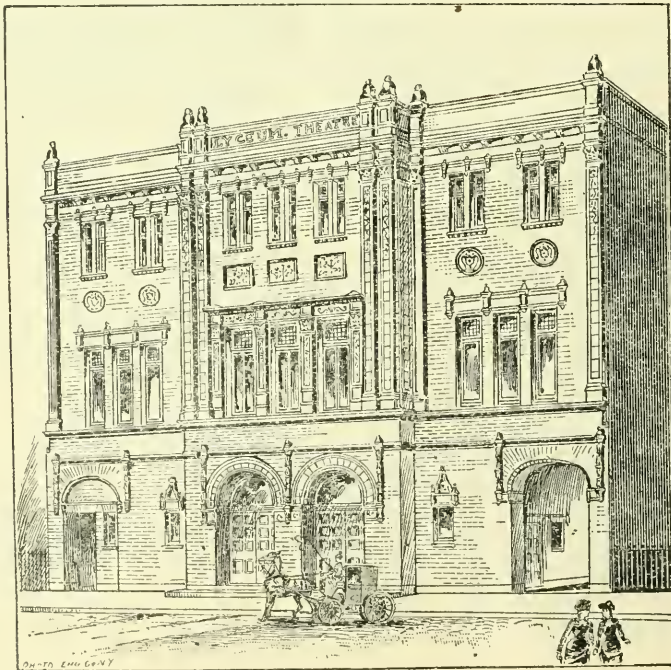


29 STATE ST..

NEW LONDON.



VIEW FROM WILLIAMS PARK.



NEW LYCEUM THEATRE.

Ladie's and gentlemen's Tennis Shoes in French Russet, Calf, Ooze Leather, and fine Sail Cloth with patent rubber soles and with thick red rubber soling,
from \$1. to \$3. per pair.

Men's Calfskin Shoes, Lace, Button, and Congress, hand sewed welts, especially adapted for tender feet, every style last from broad to extreme pointed all sizes at \$3.00 per pair, and every pair
WARRANTED,

E. V. DABOLL & CO.
56 State Street,
NEW LONDON, CT.

Noss Restaurant

When in Norwich go to

NOSS'

and get dinner

Ales, Wines, Cigars

THE FINEST LUNCH COUNTER

IN THE STATE,

DON'T FORGET THE NO'S

116 & 118 Water St.,

NORWICH, CT.

GEO. NOSS, PROP.

Citizens' Restaurant,

No. 18½ Bank Street,

TABLE BOARD - - \$4.00 ⁷ WEEK.
20 DINNER TICKETS, - - - \$5.00.
BOARD and ROOM, - \$5.50 ⁷ WEEK.

Regular Dinner 11.30 to 2.30

Transients Accommodated. Open Theatre
Nights Until One O'Clock.

All our Bread, Cake and Pastry are
made from the best material and baked on
the premises.

**WEDDINGS, PARTIES AND
SOCIABLES**

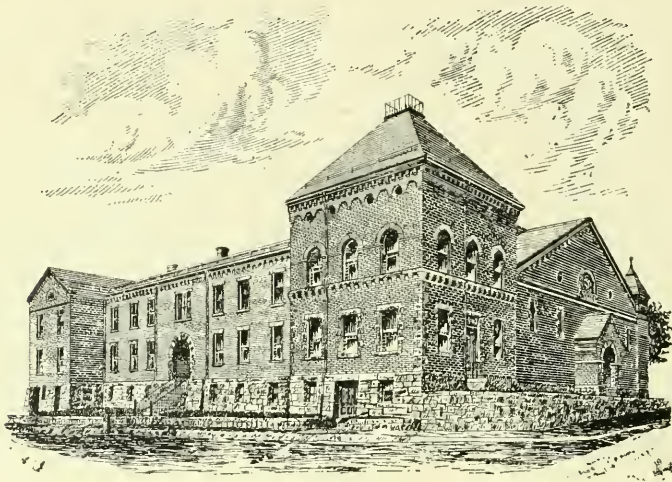
Furnished with Chicken, Lobster Salad,
Boned Turkey, Capon, Larded Game Etc.

D. R. VINCENT, Proprietor,

HOTCHKISS & CO.

DENTIST'S,

76 State St.



THIRD REGIMENT ARMORY.



APPROACH TO BRIDGE.

G. M. WILLIAMS,
 Dealer in
HARDWARE,
TOOLS, IRON, STEEL,
RAIL ROAD, MACHINISTS'
AND MANUFACTURERS' SUPPLIES,
PAINTS, OILS,
WHITE LEAD,
ZINC, & VARNISHES.
 Proprietor of the
NEW LONDON,
Agricultural Warehouse.
13 STATE ST.

BUY YOUR
DRUGS, MEDICINES AND
CHEMICALS
 AT
BALDWIN'S
PHARMACY,
 125 BANK ST.,
 A full line of Fancy Toilet
 Articles, Soaps, Perfumes,
 Sponges, Chamois, &c.
PRESCRIPTIONS
A SPECIALTY.



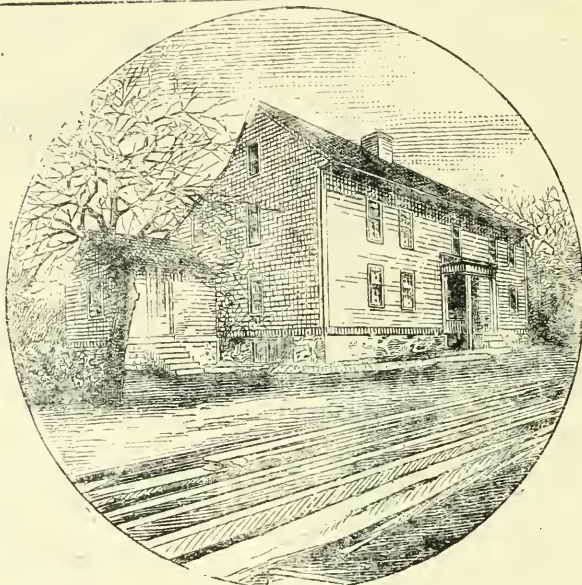
THE SWAN FOUNTAIN PEN,
OWNED AND MANUFACTURED BY MARBIE TODD & CO. NEW YORK,
IS THE BEST IN THE WORLD.
 FOR SALE WHOLESALE AND RETAIL.

AT C. JAY VIETS, BOOK STORE,

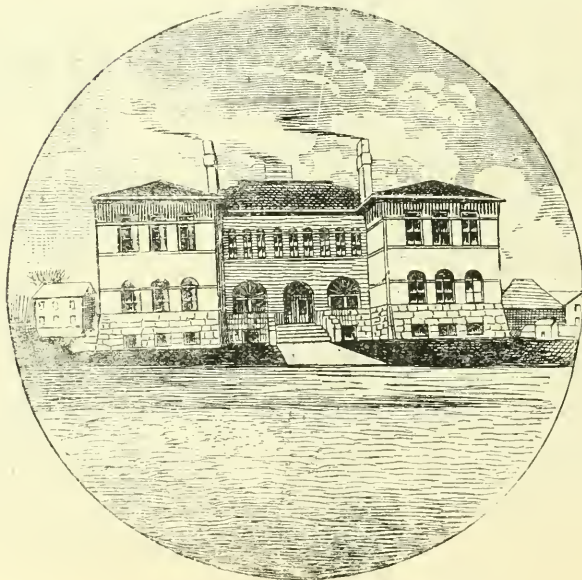
4 MAIN STREET, NEW LONDON, CONN.,

Also a full line of Books and Stationery, come and see

THE BEST PEN IN THE WORLD.



THE OLD HEMPSTEAD HOUSE BUILT 1678.



NEW SCHOOL HOUSE FOOT OF BANK STREET.

TREMONT HOUSE,

C. H. TATE, PROP.

RESTAURANT

AND

ICE CREAM PARLOR,

Cigars and Tobacco,

Board \$4.50 and \$5.00 per week

Table Board \$3.50

Cor. Atwood & Blinman, St's.

LOUIS HAHN

LEADING

JEWELER

NO. 39 STATE STREET,

Has the largest variety in Sterling Souvenir spoons in the City including the Whaling Ship, Seal of New London and Groton Monument spoons.

ESTABLISHED IN 1858

W. A. HOLT,

(Successor to HOLT & AVERY.)

FINE FAMILY GROCERIES,

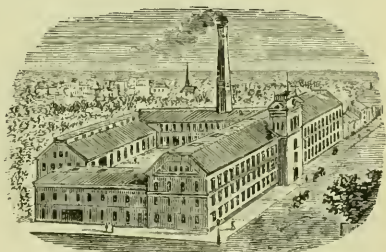
And all varieties of

Imported and Domestic
Wines, Brandies, Ales and
PORTER.

W. A. Gaites & Co's Celebrated Whiskies made at Frankfort, Ky., and acknowledged to be the finest in the United States received direct from Distilleries. Also Mt. Vernon, Hannisville, Finch's Golden Wedding, Frontier and Sherwood Rye Whiskies, and many varieties of fine Bourbon, which I guarantee Strictly Pure.

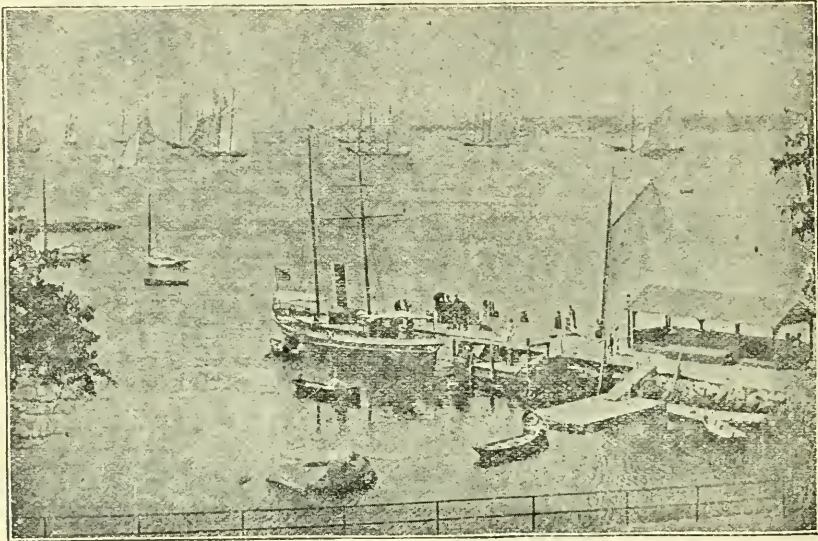
50 MAIN STREET.

The Brainerd & Armstrong Co.,
Silk Manufacturers,

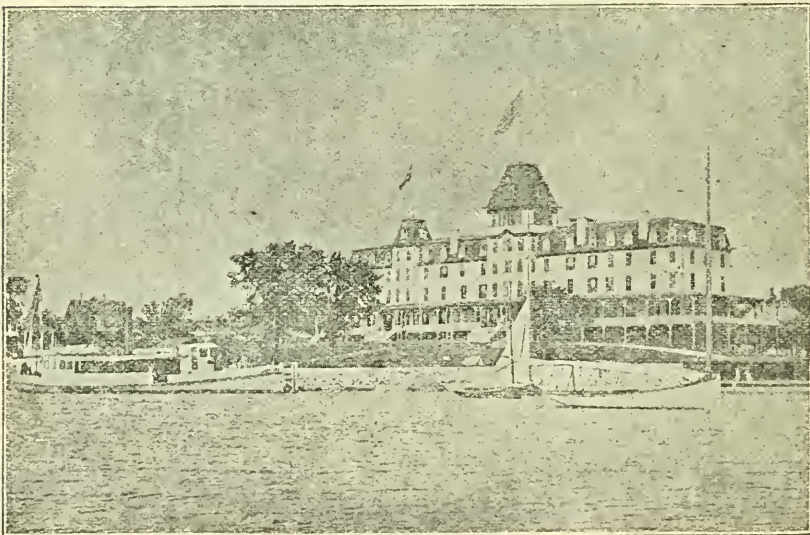


The Brainerd & Armstrong Co's Silk Works.
New London, Conn.

Union St., Corner of Church,
NEW LONDON, CONN.



WHARF AT FORT GRISWOLD HOUSE.



FORT GRISWOLD HOUSE.



THE ROCKS AT FORT GRISWOLD HOUSE.

Fort Griswold House and Cottages.

(EASTERN POINT ON THE SOUND)

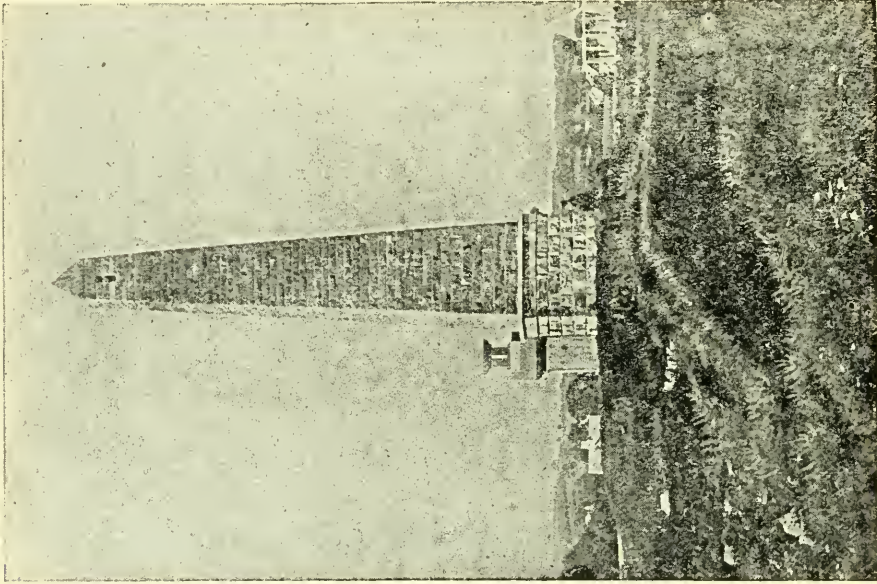
OPPOSITE PEQUOT HOUSE, NEW LONDON, CONN.

Sixth Season under present Management.

OPENS JUNE 18TH.

FINE Bathing, Boating, Fishing, Sailing and Driving. The Coolest and most Healthful Summer Resort on the Sound. Orchestra morning and evening. Absolutely no Mosquitos. Rates transient, \$3.00 to \$4.00 per day; weekly, \$17.50 to \$28.00. Special inducements to families.

JAMES C. MATTHEWS, PROPRIETOR,
Also Sturtevant House, New York.



GROTON MONUMENT.

Photographic
Supplies for
Professionals and Amateurs,
"KODAK" CAMERAS,
"HAWKEYE" AND
TRIPOD CAMERAS,
FASTMAN'S TRANSPARENT FILMS,
DRY PLATES,
CHEMICALS,
MOUNTS, &C.
CRANSTON & CO.,
158 Main Street,
NORWICH. CT.

F. & H. COIT,
— DEALERS IN —
ALL KINDS OF
LUMBER
AND COAL,
45 WATER STREET.

Who is
A. R. Birchard?
 A letter sent to
 No's. 91 to 105
 MAIN ST. NORWICH, CT.,
will tell you.

SAVE MONEY

BY HAVING YOUR

SHOES REPAIRED

— BY —

SAM'L GOLDEN,

129½ BANK ST.

Best material used, Gent's shoes
 Tapped, 40c. Heeled, 35c.

Ladies, Tapped, 35c. Heeled 15c.

Shoes Repaired while you wait.

Give us a call and be convinced.

GET YOUR
FOOT WEAR
 OF
E. H. WHEELER,
5 Main St.

T. W. POTTER,

32 STATE STREET,

Re-opens with an en-
 tire NEW STOCK of

GROCERIES,

PURCHASED FOR CASH

and For Sale at

REDUCED PRICES.

NEW LONDON NORTHERN RAILROAD.

On and after Monday, April 27, 1891, trains will

Leave Union Depot foot of State Street as follows

GOING NORTH.

5.50 A. M. — For Brattleboro, connecting at Norwich (West Side) for Putnam, Worcester, Boston and intermediate stations; at Willimantic, for Middletown, Colchester, Hartford, and Boston, at Palmer, for Albany and the West, and for Boston, Ware, Gilbertville, etc., at Barrett's for Athol; at Millers Falls for Hoosac Tunnel, at South Vernon for Keene; at Brattleboro for all points North.

7.45 A. M. — Norwich 8.20 for Palmer, connecting at Willimantic for Hartford, at Palmer for Albany and the West and for Boston. Leave Palmer 2.00 P. M. for Amherst and Brattleboro.

9.45 A. M. — Norwich, 10.20 for Willimantic, connecting for Hartford, Middletown and Colchester.

11.25 A. M. — Norwich, connecting from New York, Providence and Boston Rail Road.

1.30 — P. M. Norwich, connecting with Norwich and Worcester Rail Road.

2.30 P. M. — Norwich, 3.00 for Brattleboro, connecting at Willimantic for Hartford; at Palmer for Albany and the West.

5.25 P. M. — For Willimantic, connecting from N. Y. N. H. & H., and N. Y. P. & B. R. R., and connecting at Willimantic for Hartford, Bristol, Putnam, Boston and Providence; also for Middletown, Colchester and New Haven. For Norwich, at 3.35, 5.00, 7.45, 9.45, 11.25 A. M. 1.30, 2.30, 5.25, and 8.15 P. M. connecting from N. Y. N. H. and N. Y. P. & B. Rail Roads.

TRAINS FOR NEW LONDON

Leave Brattleboro at 5.35, and 10.25 A. M. and 3.15 P. M. Millers Falls 6.18 and 11.35 a. m. and 4.07 p. m. Amherst 6.53 a. m. 12.12 and 4.40 p. m., Palmer 8.35 a. m., 2.00 and 7.10 p. m. Willimantic 8.05, 10.05, a. m., 3.22, 6.40 and 8.45 p. m.

Leave Norwich for New London at 6.15 a. m. connecting directly for Providence and way stations, 8.42, 10.42 a. m., 12.20, 3.20, 4.00, 7.15 and 9.25 p. m.; also at 10.00 from Norwich and Worcester Depot.

C. F. SPAULDING, Supt.

DISTANCES AND FARES, N. L. N. R. R.

Miles	New London to	Fares.	Miles	New London	Fares.	Miles	New London	Fares.
6	Montville,	\$0.20	42	So. Willington,	\$1.25	85	Amherst	\$2.55
13	Norwich,	.40	44	Tolland,	1.30	88	No. Amherst,	2.65
15	Norwichtown,	.45	50	Stafford,	1.50	91	Leverett,	2.70
17	Yantic,	.50	60	So. Monson,	1.80	96	Montague,	2.85
23	Lebanon,	.70	61	Monson,	1.85	100	Miller's Falls,	2.90
26	South Windham,	.80	65	Palmer,	1.95	103	Northfield Farms,	3.00
30	Willimantic,	.90	68	Three Rivers,	2.05	109	Northfield	3.20
35	South Coventry,	1.05	70	Barrett's Joint	2.10	111	South Vernon,	3.30
37	Eagleville,	1.10	75	Belchertown,	2.25	116	Vernon,	3.40
39	Mansfield,	1.15	80	Dwight's,	2.40	121	Brattleboro,	3.50
40	Merrow,	1.20	83	South Amherst,	2.50			

New York, New Haven and Hartford Rail Road,

SHORE LINE DIVISION

Trains leave Union Depot foot of State Street as follows,

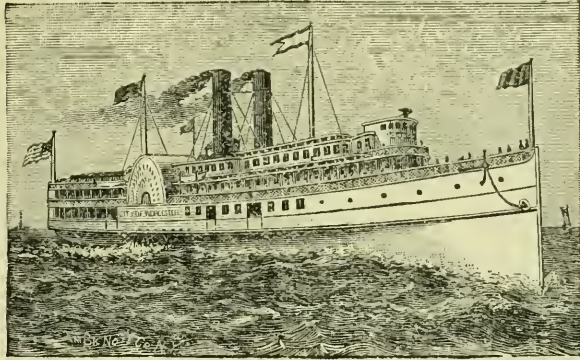
For NEW HAVEN AND NEW YORK—Accommodation trains at 7.35, 11.30 a. m.; 5.25 p. m. Express trains at 2.17, a. m. 1.03, 4.03, and 7.9 p. m.

For HARTFORD AND WAY STATIONS via Valley Division—3.17, 7.35, and 11.30 a. m. 4.03, and 5.25 p. m.

LUCIUS TUTTLE, Gen. Manager, C. T. HEMPSTEAD, Gen. Pas. Agt.

NORWICH LINE TO NEW YORK.

SPEED, COMFORT,
SAFETY,



INSIDE
ROUTE.

THE PALACE STEAMER

CITY OF WORCESTER,

W. P. WARD, CAPTAIN.

From New London Mondays, Wednesdays and Fridays.

FAVORITE STEAMER

CITY OF NEW YORK,

S. E. SHIRLEY, CAPTAIN.

On Tuesdays, Thursdays and Saturdays:

During June, July, August and September, the Steamer

CITY OF LAWRENCE,

On Sundays will leave The Block Island Dock, rear Union Depot New London at 9.00 p. m. for New York. Reduction of Fare: New London to New York \$1.00 until June 1st, then \$1.40.

RETURNING—Steamers leave pier 40, North River, New York, Daily, Sundays excepted, at 5.00 p. m. in Summer, and 4.30 in Winter.

For further information apply at office of the Company.

Steamboat Wharf, New London,

THOMAS CLARK, CHAS. PRENTIS, O. L. JOHNSON, JR.,

President

Agent.

Secy. and Treasurer.

New York, Providence and Boston Rail Road.

Passenger Train Service In effect May 1, 1891. Trains will run as follows
Leave Union Depot foot of State Street New London.

GOING EAST.

3.50 a. m.—Through mail daily, stopping at Mystic on signal, Westerly arriving at Providence at 5.35 a. m. Boston, 7.00, Worcester 8.00 a. m.

6.30 a. m.—Stops at all stations; connects at W. R. Junction to and from Hope Valley, at Kingston to and from Narragansett Pier at Wickford Junction for Newport at Providence for Taunton, New Bedford, with Worcester division for Worcester and way stations, arriving at Providence at 8.48 Worcester 10.45 Boston 10.05 a. m.

7.20 a. m.—Boston express, connects at Wickford Junction to and from Newport, arriving at Providence at 9.15 a. m. Boston at 11.05 a. m.

9.15 a. m.—Boston mail for Providence, stopping at Mystic, Stonington, Westerly, Wickford Junction, arriving at Providence at 10.55 a. m., Worcester 1.20 p. m., and Boston 12.15.

10.15 a. m.—Accommodation, connecting at Wickford Junction for Newport, arriving at Providence 12.25 p. m., Boston 1.55, Worcester 3.40 p. m.

1.35 p. m.—Boston express, stopping at Westerly; Kingston, to and from Narragansett Pier and Wickford Junction, arriving at Providence at 3.15, Worcester at 6.00, Boston at 4.30 p. m.

1.37 p. m.—Stonington Special.

3.05 p. m.—Solid train to Boston, stopping at all stations, connects at W. R. Junction to and from Hope Valley; Wickford Junction to and from Wickford, arriving in Providence at 5.35 Worcester 7.09 and Boston at 6.57 p. m., connects at Kingston to and from Narragansett Pier.

4.32 p. m.—Shore Line Express, stopping at Stonington, Westerly, Wickford Junction for Newport, arrives at Providence at 6.13, Boston 7.30 and Worcester 9.45 p. m.

4.35 p. m.—Accommodation, stops at all stations, arriving in Providence at 6.50 p. m. Worcester 9.45, Boston 9.00 p. m.

6.20 p. m.—Special Accommodation train for Stonington, connects at Stonington with Steamers of Stonington Line for New York.

8:20 p. m.—Limited express, stopping at Westerly, arrives in Providence 9:55, and Boston at 11.00 p. m.

8:22 p. m.—Accommodation for Stonington, arriving at 9:00 p. m.; connects with Stonington for New York:

PROVIDENCE FOR NEW LONDON.

1:20 a. m.—New York night mail express daily, stopping at Westerly, arriving in New London at 3.05, New Haven at 4:47 New York 7.00 a. m.

6.40 a. m.—Accommodation, arriving in New London at 8.55 a. m.; connects at Kingston for Narragansett Pier.

8.15 a. m.—New London accommodation, stopping at principal stations, arriving at New London 10.28 a. m., New Haven 1.20 p. m., New York 3.30 p. m. Connects at Wickford Junction for Newport.

9.30 a. m.—Express, stopping at principal stations, arriving at New London at 11.20 New Haven 1:20, New York 3:30 p. m.

11.10 a. m.—New York express, stopping at Wickford Junction to and from Newport, Westerly, arriving in New London at 12.57 New Haven 2.25 New York 4.30 p. m.

1.20 p. m.—Stopping at principal stations, arriving in New London at 3.45 p. m.

2.15 p. m.—Shore Line express, stops at Wickford Junction, Kingston, and Westerly, arriving in New London at 3.55, New Haven 5.25, New York 7.30 p. m. Connects at Kingston for Narragansett Pier.

3.30 p. m.—Express for New London, stopping at East Greenwich, Wickford Junction, Kingston, Westerly Stonington, Mystic and Noank, arriving in New London at 5.10, New Haven 7.18 and New York 10.00

5.14 p. m. Accommodation stopping at principal stations, connects at Wickford Junction from Wickford at Kingston for Narragansett Pier at W. R. Junction to and from Hope Valley, arriving at New London at 6.45, connecting for Norwich at 8:15 p. m.

6.00 p. m.—Limited New York express, daily connects at Wickford Junction (except Sundays) from Newport, arriving at New London 7.40 p. m., New Haven 9.05, New York 11.00 p. m.

J. B. GARDINER, Superintendent.

O. H. BRIGGS, Gen. Pass Agent.

Distances and Fares, N. Y. P. & B. R. R.

Miles	NEW LONDON TO	Fares.
1.39	Groton,	\$0.05
4.53	Poquonnock,	.15
7.42	Noank,	.23
8.68	W. Mystic,	.26
9.47	Mystic,	.28
12.92	Stoington,	.37
18.39	Westerly,	.51
23.06	Niantic,	.62
27.08	Wood River, Jr.,	.72
29.40	Carolina,	.78
30.10	Shannock,	.80
30.74	Kenyons,	.82
35.11	Kingston,	.92
39.13	Slocums,	1.02
42.71	Wickford, Jr.,	1.11
45.23	Davisville,	1.18
48.71	Greenwich,	1.26
50.30	Cowesett,	1.30
51.51	Apponang,	1.33
53.70	Hills Grove,	1.39
56.99	Auburn,	1.46
59.00	Elmwood,	1.51
64.00	Providence,	1.60
108.00	Worcester,	2.70
108.00	Boston,	2.60

N. Y. N. H. & H. R. R.

Miles	NEW LONDON TO	Fares.
3.18	Waterford,	\$0.10
6.93	East Lyme,	.20
7.93	Crescent, Beach,	.20
11.07	South Lyme,	.30
15.35	Blackhall,	.40
16.99	Lyme,	.45
17.43	Conn River,	.45
18.85	Saybrook,	.50
22.72	Westbrook,	.60
24.94	Grove Beach,	.70
27.20	Clinton,	.70
30.75	Madison,	.80
32.88	East River,	.85
35.00	Guilford,	.90
36.32	Sachems Head,	.90
37.85	Leete's Island,	.95
39.36	Stony Creek,	1.00
40.88	Pine Orchard,	1.05
42.86	Braunford,	1.10
45.96	East Haven,	1.15
48.57	Fair Haven,	1.20
49.32	Cedar Hill,	1.25
50.97	New Haven,	1.25
124.47	New York,	2.75

FIRE ALARM.

NUMBER AND LOCATION OF BOXES.

- Box 3. Bank and Shaw sts.
 4. Police Station, Potter street.
 5. Ocean and Lee Avenues.
 6. Hopson & Chapin's near office.
 7. Pequot ave., near B. C. G. Works.
 8. Pequot house, front of Cassino.
 12. Bank and Howard streets.
 13. Federal and Main streets.
 15. Main st. and Crystal ave. Bridge.
 16. Front of Thomas Hose Co's House.
 23. State and Bank streets.
 25. Williams and Broad streets.
 27. Hempstead st. & Manwaring Hill.
 31. R. T. Palmer Co.' Mill.
 32. Huntington and State streets.
 34. Bulkeley Place and Huntington st.
 41. East New London, N. L. N. R. K. Shop, near Drawbridge.

U. S. MAILS.

Boston and the East.—Open 6.45, 9.15, 11.00 a. m., 1.30, 4.30, 7.15 p. m. Close 6.00, 8.30 a. m., 1.00, 4.00, 4.45, 7.15, 10.30 p. m.

Boston & Albany West.—Open 11.40 a. m. Close 2.00 p. m.

Fishers Island N. Y.—Open 9.15 a. m. Close 2.00 p. m.

Groton Ct.—Open 6.45, 10.30 a. m., 7.00 p. m. Close 6.00, 10.10 a. m., 6.00 p. m.

Hartford Ct.—Open 6.45, 9.45, 11.40 a. m., 1.30, 5.00, 8.00 p. m. Close 7.00, 7.30, 12.30, 2.30, 3.30, 4.45, 7.15, 10.30 p. m.

Montville, Ct.—Open 11.40 a. m., 5.00 p. m. Close 7.30 a. m., 2.00 p. m.

Mystic, Ct.—Open 9.15 a. m., 1.00, 7.15 p. m. Close 6.00, 8.30 a. m.; 1.00, 4.00 p. m.

Norwich Ct.—Open 6.45, 11.40 a. m., 4.30, 8.20, 11.00 p. m. Close 9.15 a. m., 1.00, 4.45, 10.30 p. m.

New York.—Open 6.45, 9.45 a. m., 1.30, 5.00, 6.45, 8.30 p. m. Close 7.00, 11.00 a. m., 12.30, 3.00, 4.45, 7.15, 10.30 p. m.

Providence Open:—6.45, 9.15 a. m., 1.30, 4.30, 7.15 p. m.; Close 6.00, 8.30 a. m.; 1.00, 4.00, 10.30 p. m.

Southern, States.—Open 6.45, 9.45 a. m.; 1.30, 5.00, 6.45 p. m. Close 7.00, 11.00 a. m.; 12.30, 3.30, 4.45, 7.15, 10.30 p. m.

Western States.—Open 6.45, 9.15, 11.40 a. m., 1.30, 5.00, 6.45, 8.30 p. m. Close 7.00, 11.00 a. m., 12.30, 2.00, 3.30, 4.45, 7.15, 10.30 p. m.

CITY OFFICERS.

MAYOR.

Hon. GEORGE F. TINKER '91.

ALDERMEN.

W. S. Clappell.....'91.	C. S. Starr.....'91.	H. S. Bartlett..... 91.
C. L. Ockford '91.	J. D. Cronin ... 91.	G. C. Streng.....'92.
P. C. Dunford.....'93.	W. H. Bentley'93.	J. H. McCormick '93.

COUNCILMEN.

B. H. Lee..... 92.	J. D. Culver. 91.	J. Hoj'son, Jr..... 91.
J. E. Harris 91.	G. P. Smith..... 91.	W. T. May..... 92.
J. Starr 92.	F. W. Dow..... 92.	J. Moran..... 92.
C. S. Darrow. 92.	W. C. Fish.....'93.	E. N. Crocker..... 93.
J. F. Smith.....'93.	G. M. Cole.....'93.	H. J. Savage.....'93.

City Clerk—George Colfax. City Treasurer John McGinley.

City Attorney F. B. Ban'legee. Ast. Atty. Bryan F. Maliau.

Commissioner of Charities W. R. Austin.

Assessors D. B. Chapman. C. S. Harris. John Grace.

Board of Relief D. Hempstead, R. B. Feagar, Seth Morgan.

Constables C. G. Harris, M. M. Peters, J. Comstock, A. Frazer,

Commissioners of Town Deposit Fund J. E. Darrow, L. W. Miner, and J. I. Chew.

Water Commissioners P. C. Dunford, G. Williams, B. A. Armstrong, Edward T. Brown.

Board of Education F. L. Palmer, A. C. C. F. M. Braman, B. Stark, J. P. Johnston, T. W. Potter, F. E. Barker, J. G. Stanton, H. D. Harris.

Treasurer Town Deposit Fund J. L. Chew.

Treasurer of School Fund Wm. H. Reeves.

Grand Jurors W. H. Anderson, Wm. H. Burdick. John Bishop, Wm. Russell J. I. Beuham, Wm. Hogan.

Chief Engineer John H. Brown.

Assistant Engineer Thomas Kiley.

Second Assistant Engineer Richard T. Howard.

Inspector of Buildings J. Lawrence Ro.

City Surveyor E. B. Jennings.

Ferry-Boat Uncas,

WEEK DAYS

Ferry—Boat leaves Groton for New London 6.00, 6.30, 7.00 a.m., then every twenty minutes until 6.00 p.m., then every half hour until 10.00, 10.50 p.m.,

Ferry—Boat leaves New London for Groton at 6.15, 6.45, 7.10 a.m., then every twenty minutes until 6.15 p.m., then every half hour until 10.15, 11.00 p.m.

SUNDAYS

Ferry—Boat leaves Groton for New London at 9.00, 10.00 a.m., then every half hour until 6.00 p.m., then every hour until 9.00 p.m.

Ferry—Boat leaves New London for Groton at 9.30, 10.15 a.m., then every half hour until 5.45, 6.30, 7.30, 8.30, 9.15 p.m.

W. R. DENISON, Manager.

Steamer Munnatawket,

CAPT. CHAS. E. NASH,

Between Fishers Island and New London, carrying U. S. Mail, will run daily except Sunday, leaving Fishers Island at 8.15 a.m., returning will leave New London at 2.30 p.m.

N. BENVENUTI,

— DEALER IN —

Fruit, :- Confectionery,

CIGARS AND TOBACCO

ALSO ITALIAN CHEESE AND

Delicatessen &c.

CORNER OF

WASHINGTON & STARR STREET.

NEW LONDON, CONN.

Steamer Manhanset,

CAPT. JAMES F. SMITH,

Will make Daily Trips between New London, Greenport and Sag Harbor, leaving New London at 8.16 a. m. arriving at Sag Harbor about 12.00.

Returning, leave Sag Harbor at 12.20 p. m., Greenport at 1.20 p. m., arriving at New London about 4.00 p. m.

FARE EACH WAY \$1.00,

JESSE REEVES, Agt., Greenport.

JOHN HOMAN, Agt., Sag Harbor.
E. F. MORGAN, Sec'y and Treas.

Omnibus Lines,

Bates'—'Busses will leave City Hall for Pequot House at 6.45, 8.30, 9.30, 10.30, 11.30 a. m., 12.30, 1.30, 2.30, 3.30, 4.30, 5.30, 6.45 8.30, 9.00 p. m. Returning, leaves Pequot House half an hour from time of leaving City Hall.

Burr's Line.—'Busses will leave City Hall for Pequot House and Ocean Beach hourly from 8.00 a. m. to 1.00 p. m.; also 7.30 and 8.45, p. m. Returning, leaves Ocean Beach 45 minutes later.

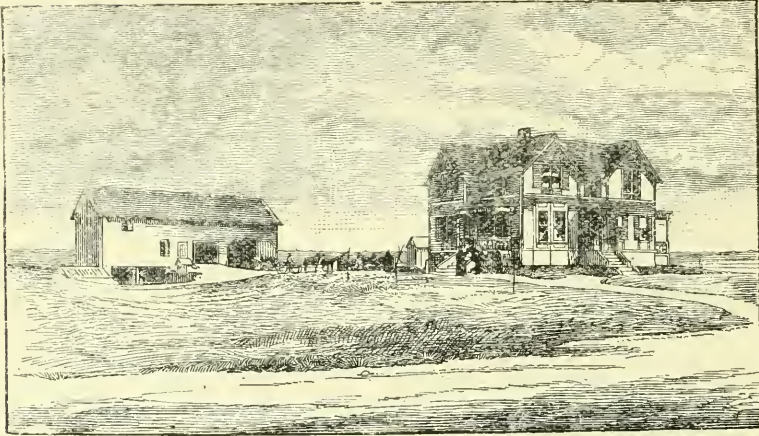
Among all the inventions of the 19th. Century, the Sewing Machine is one of the most important, and among the hundreds of different kinds that have come before the people, the New Home and Domestic, are acknowledged leaders the world over.

These Light Running Sewing Machines I have the honor to present to the people of New London, and vicinity as the sole agent.

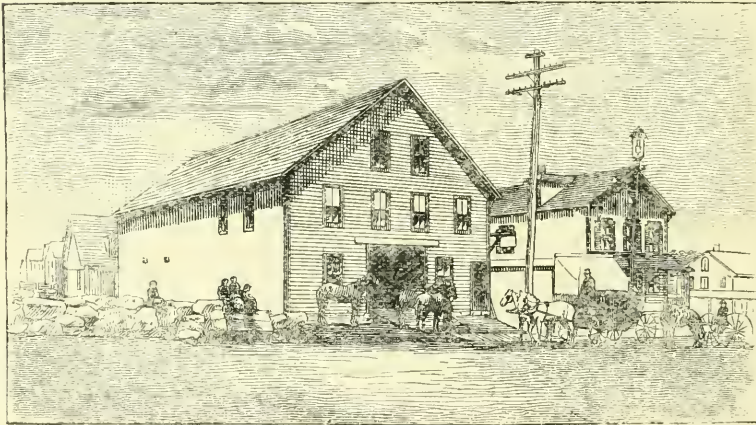
The Largest retail stock of Machine Needles and fixtures in Connecticut.

F. G. MOXLEY,

No. 5 Main Street.



The Manatock Stock Farm. [7]



MANWARING'S,
LIVERY AND SALE STABLE,
NO. 249 BANK STREET,
— TELEPHONE CONNECTION. —

At Manitock Stock Farm, Waterford, Conn., the young Hambletonian Stallion, Jersey Rysdyk, owned by Albert O. Manwaring, will stand for the season of 1891.

Jersey Rysdyk 6029. He by Sammy Rysdyk 527; dam Jennie, by Wm. Rysdyk 527, second dam Maggie by Seeley's American Star.

Horses bred, trained, boarded and pastured at Manitock Stock Farm.

A. O. Manwaring, Prop.

P. O. Box 69.

Waterford, Conn.

JOHN SPALDING, FLORIST

96 Main Street.

Has a full stock of Plants for the Garden and house. Cut Flowers, and fine Roses, designs made in the best styles on short notice.

JOHN SPALDING.

NEW LONDON DECORATING CO.

No. 8 BANK STREET,
HEAD-QUARTERS FOR
Paperhangings and

**Painters
supplies,
Brushes,**

and Artist's Materials.

OILS, PAINTS, GLASS & C.

Best men employed and

work taken by the

day or contract.

SMITH'S

ASTHMA

SPECIFIC,

CURES

ASTHMA, PHTHISIC, HAY FEVER,

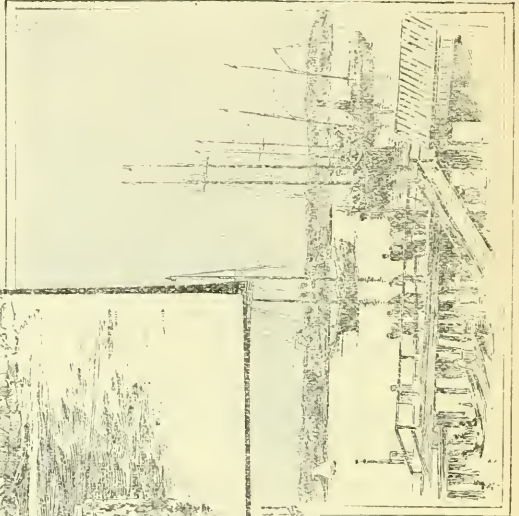
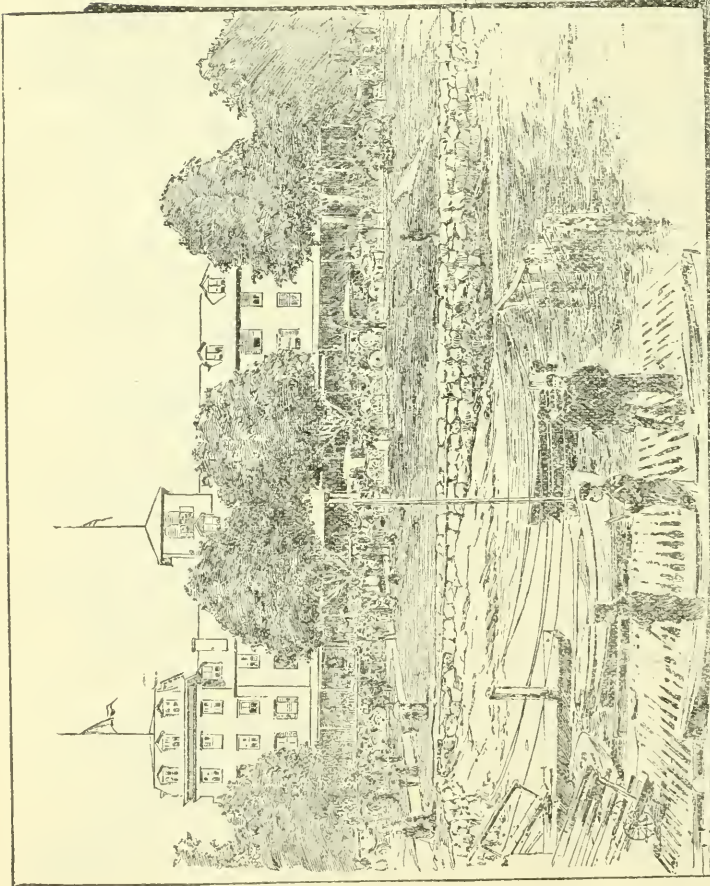
AND NASAL CATARRH.

Sampl by mail 20 cents.

J. A. BORN SMITH,

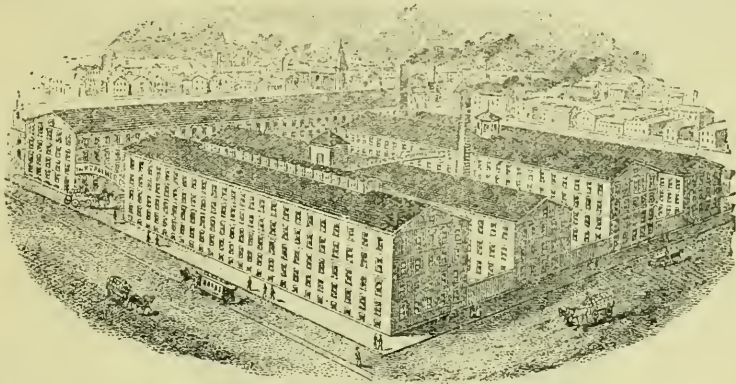
DRUGGIST,

GROTON, CONN.



TWO PEQUOT
&
VIEWS.

THE R. T. PALMER COMPANY.



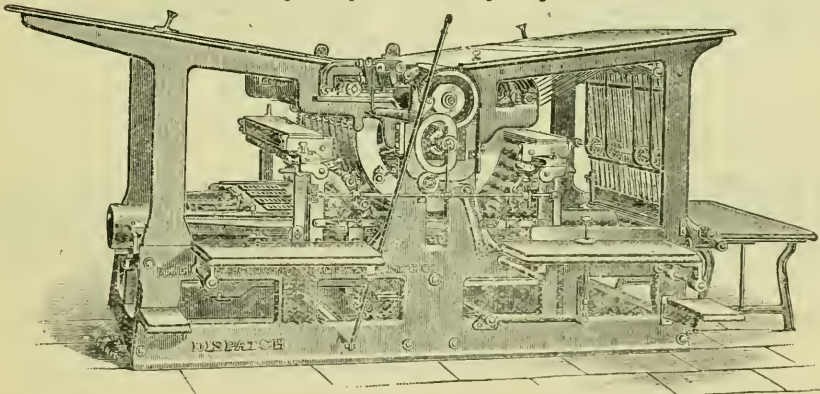
Largest manufacturers of bed comfortables in the world.

President, Tyler R. Palmer; Secretary and Treasurer, Reuben T. Palmer Jr.; Directors, Tyler R. Palmer, Reuben T. Palmer, Jr., R. T. Palmer, Sr., John M. Conway, E. H. Hamilton.

THE BABCOCK PRINTING PRESS MFG. CO.

**MAIN OFFICE AND WORKS,
NEW LONDON, CT.**

Manufacturers of a full line of Cylinder Presses.



"The Dispatch" the fastest single cylinder press built.

NEW YORK OFFICE 9 and 10 TRIBUNE BUILDING.

—* BRANCH OFFICES AT *—

CHICAGO, ST. LOUIS, ST. PAUL, KANSAS CITY, OMAHA, AND SAN FRANCISCO.



THE NEW LONDON LIGHT.

ESTABLISHED 1839

ALBERT C. VEDDER:

DAVID B. HARRIS.

VEDDER & HARRIS,

SUCCESSORS TO

L. HEYNIGER & CO.

WOODEN AND WILLOW

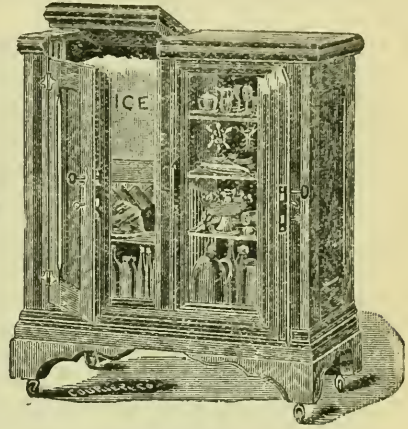
WARE,

Mr. David B. Harris, of Vedder & Harris, is an Old New Londoner,
(having been born near the above site.)

AND EVERY ARTICLE OF

HOUSE FURNISHING

GOODS,



FOR DOMESTIC AND EXPORT TRADE.

SOLE AGENTS FOR
Jewett's Celebrated Refrigerators.
Water Coolers and Filters.

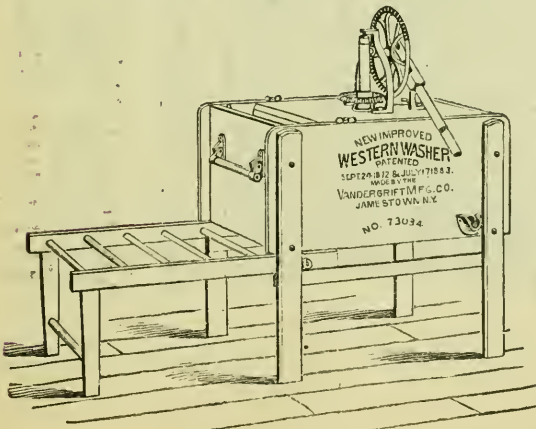
WHITE MOUNTAIN AND LIGHTNING

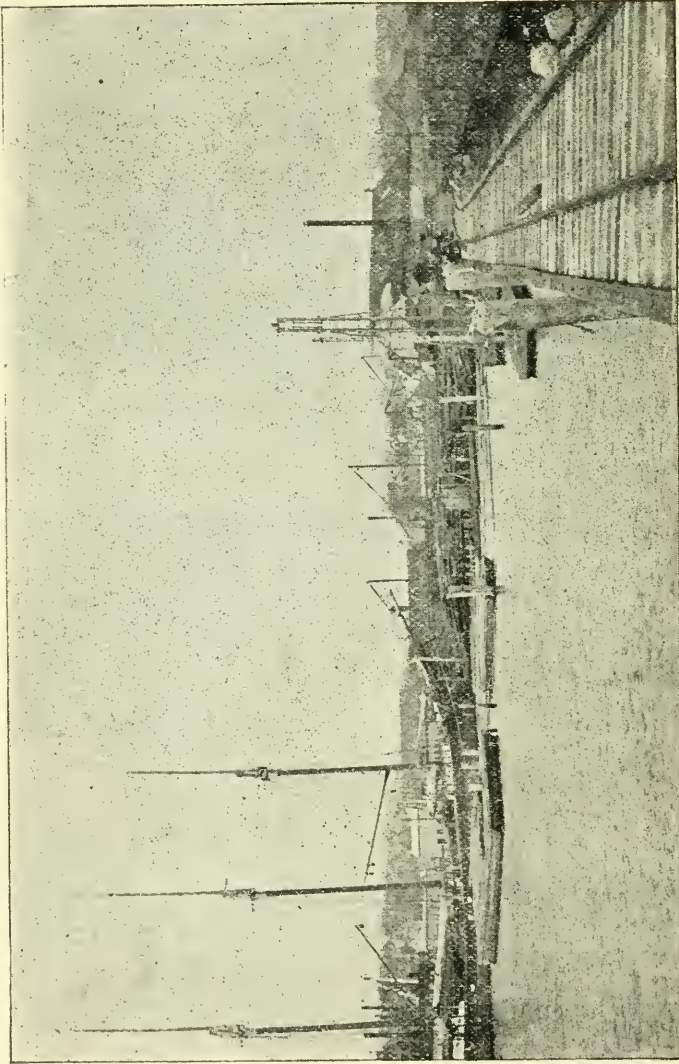
ICE CREAM FREEZERS.

21 AND 23

FULTON ST.

New York





COLUMBIA STEAM SAW AND PLAINING MILL,
 ~~~~~ WHOLESALE AND RETAIL ~~~~~  
**YELLOW PINE TIMBER, FOR FACTORY, RAIL ROAD,**

**BRIDGE AND SHIP WORK.**  
 RAIL ROAD WHARF, EAST NEW LONDON.

**THE NORWICH SAVINGS SOCIETY.**

INCORPORATED IN 1824.

Deposits, - - \$8,854,450.60  
 Surplus and Profit,  
 and Loss, - 681,578.44

PRESIDENT,  
 AMOS W. PRENTICE.

VICE-PRESIDENTS,

John Mitchell, John A. Morgan,  
 John Brewster, Henry Larrabee.

DIRECTORS,

Lucius Brown, Asa Backus,  
 Bela P. Leonard, Sidney Turner,  
 George R. Hyde, Charles Bard,  
 Calvin L. Harwood.

SECRETARY AND TREASURER,  
 Costello Lippitt.

ATTORNEY - Jeremiah Halsey.

**THE SAVINGS BANK**

Of New London.

INCORPORATED IN 1827

Dividend day, Jan. 1 & July 1.

Open daily from 10 a. m. to 1 p. m.; and  
 from 2 p. m. to 3 p. m. On Saturday from  
 10 to 12.

WILLIAM H. CHAPMAN, Pres.

WALTER LEARNED, Asst. Treas.

Keep up with the times by Purchasing

**Silver-Plated Ware,**

STAMPED



**ROGERS.**



You are up to the times, as our line of Silver-Plated Ware is the Best  
 in the world. Orange Spoons are on the list of things needed in every  
 household. Our line is unequalled

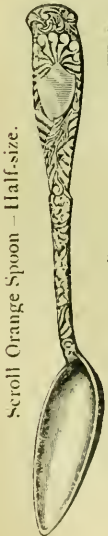
SEND FOR CATALOGUES.

**The Wm. Rogers Manufacturing Co.**

OFFICE AND FACTORY.

P. O. Drawer 30.

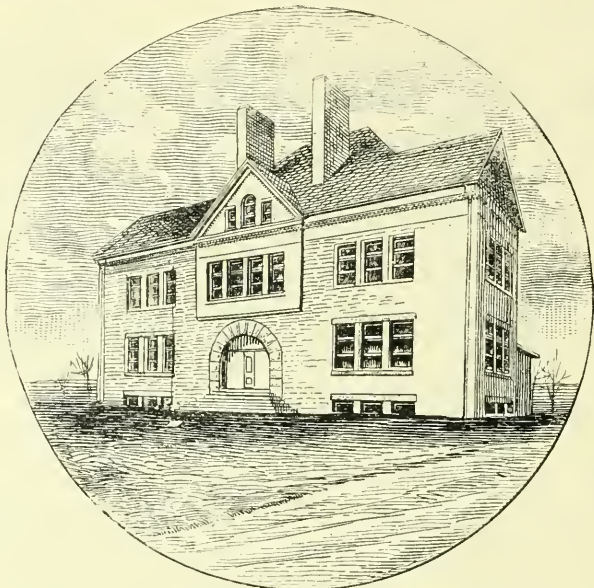
Hartford, Conn.



Scroll Orange Spoon - Half-size.



Embossed Orange Spoon - Half size.



THE NEW GRAMMAR SCHOOL.



THE UNION DEPOT.

# T. A. SCOTT,

## DIVER, WRECKER AND CONTRACTOR

GENERAL LIGHTERAGE

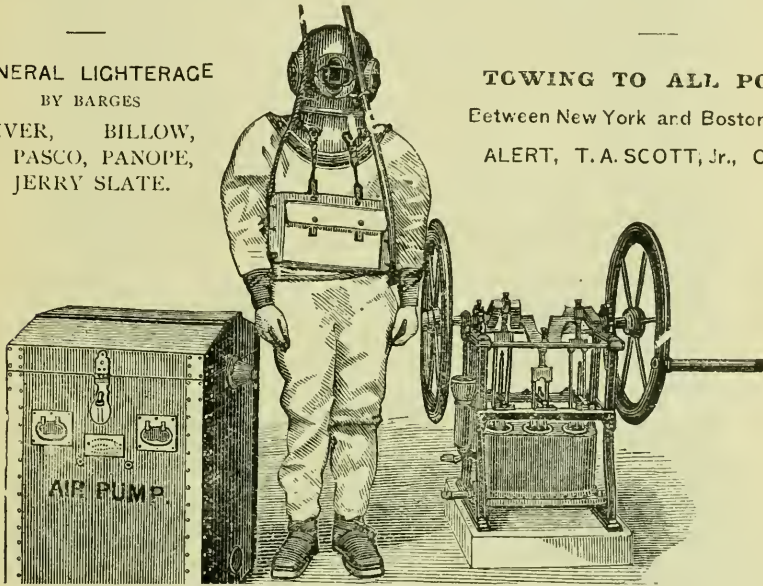
BY BARGES

DIVER, BILLOW,  
H. PASCO, PANOPE,  
JERRY SLATE.

TOWING TO ALL POINTS

Between New York and Boston by Tugs

ALERT, T. A. SCOTT, Jr., CASSIE.

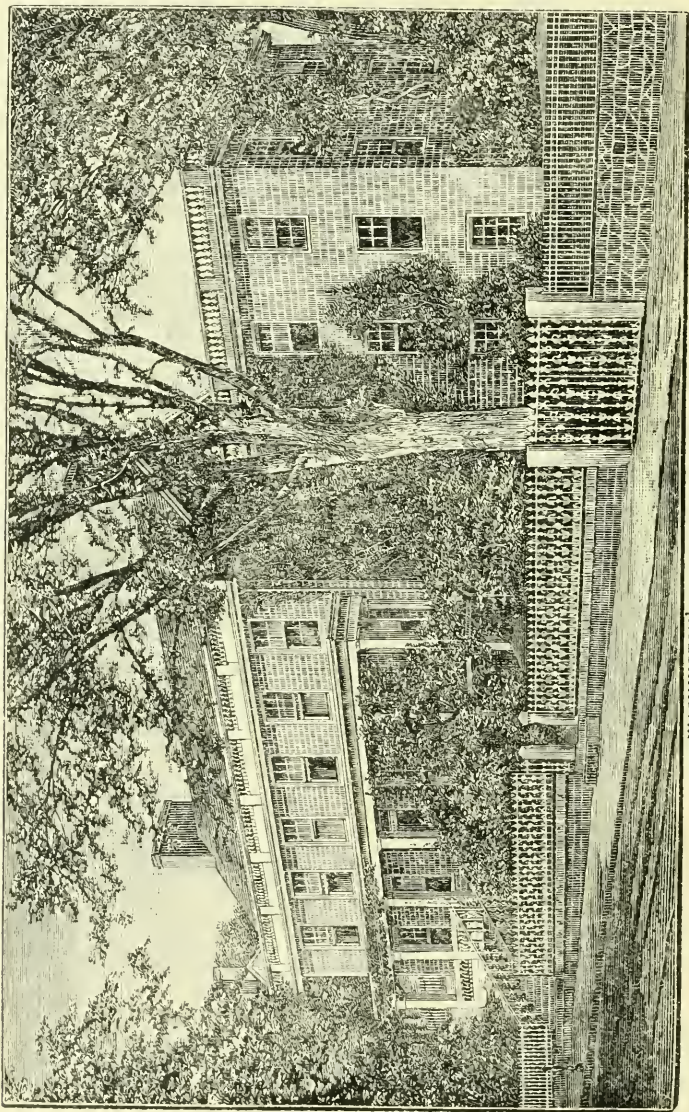


OF ALL KINDS OF

# SUBMARINE WORK,

Pequot Avenue, New London, Conn.

Raising Sunken Vessels or Cargoes, Steam Pumps at Short Notice, Preparing  
Foundations for Butments, Examination and Repairs of Marine Railways,  
Ships' Bottoms, Dams, etc., Building Wharves and Sea Walls,  
Derricks for Handling Heavy Weights, etc.



WASHINGTON'S OLD HEAD-QUARTER.



# Putnam Furniture Manufacturing Co. LIBERAL HOUSE FURNISHERS.

*Do not forget we are head-quarters for all kinds and grades of Furniture, Carpets, Bedding, Stoves, Ranges and complete House Furnishings. Our prices the lowest, Our goods the best, Easy terms when desired or a liberal discount for cash.*

*We are head-quarters for Summer goods.*

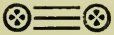
*Our Refrigerators can not be beat for style, finish or the saving of Ice. Our Oil Stoves the latest and best, We control the "Grand Oil Heater", also their entire line. See the new Oil Range.*

We have sold

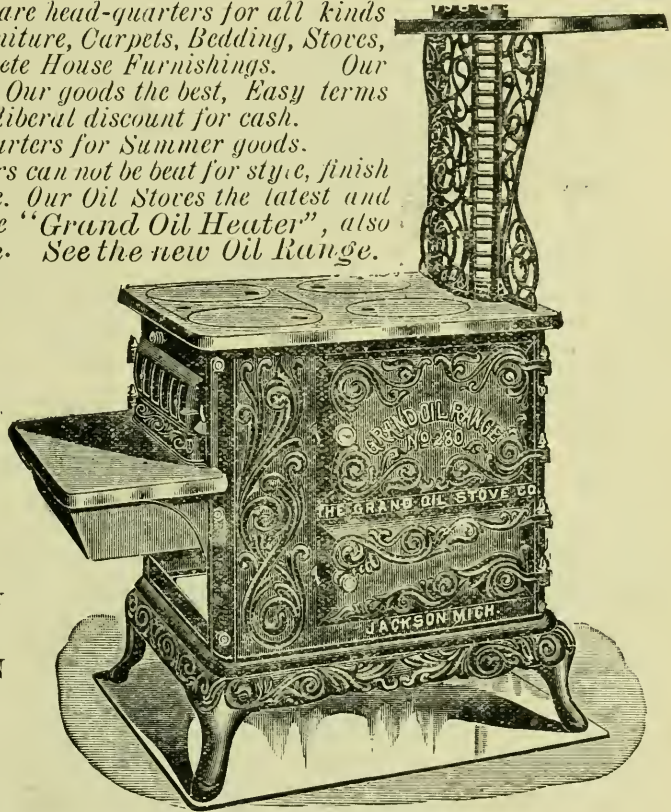
—200—

HEATERS

and expect to sell  
as many of these  
RANGES.



WE ARE DIRECTLY  
OPPOSITE THE OLD  
WASHINGTON  
HEAD-QUARTERS.

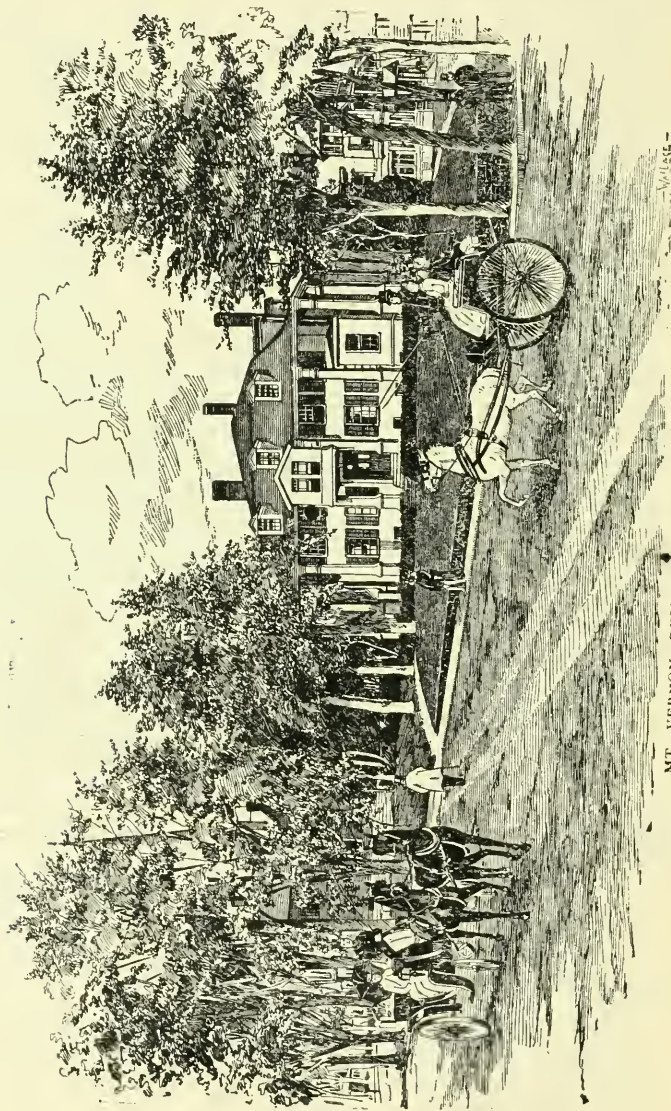


## F. P. KENYON & SON, PHOTOGRAPHERS,

One Dozen Cabinet Photographs for \$3.00.

*Instantaneous Process. Splendid success with Babies' Pictures.*

NO. 4 BANK STREET.



MT. VERNON, RESIDENCE OF E. C. PALMER.

New Clothing Store,  
**BARKER & MAY,**

If you are in want of Clothing call at our store and you will be supplied from the best and most stylish line of Clothing that ever came to New London, in Men's Suits and Spring Overcoats, Children's Suits and Reefers, it is acknowledged that we excel.

**LOW PRICES,  
NO. 16 STATE STREET.**

Allen Penhallow,

*25 and 27 Washington Street.*

**BUY MEAT AND VEGETABLES**

OF HIM.

BUY YOUR

**GROCERIES**

OF HIM,

**LOW PRICES, FAIR DEALING,  
FULL WEIGHT, ORDERS CALLED FOR  
AND GOODS DELIVERED.**

George F. Barnstorf,  
Fine Delicatessen and

**FANCY GROCERIES**

**FANCY CREAMERY &  
DAIRY BUTTER**

A SPECIALTY.

IMPORTED AND DOMESTIC

**DELICACIES,**

FOREIGN & DOMESTIC

**CHEESE**

OF ALL KINDS,

*47 Bank St. and 45 Main St.*

**FOR THE FINEST**

FLAVORED

TEAS

AND

FRESH ROASTED

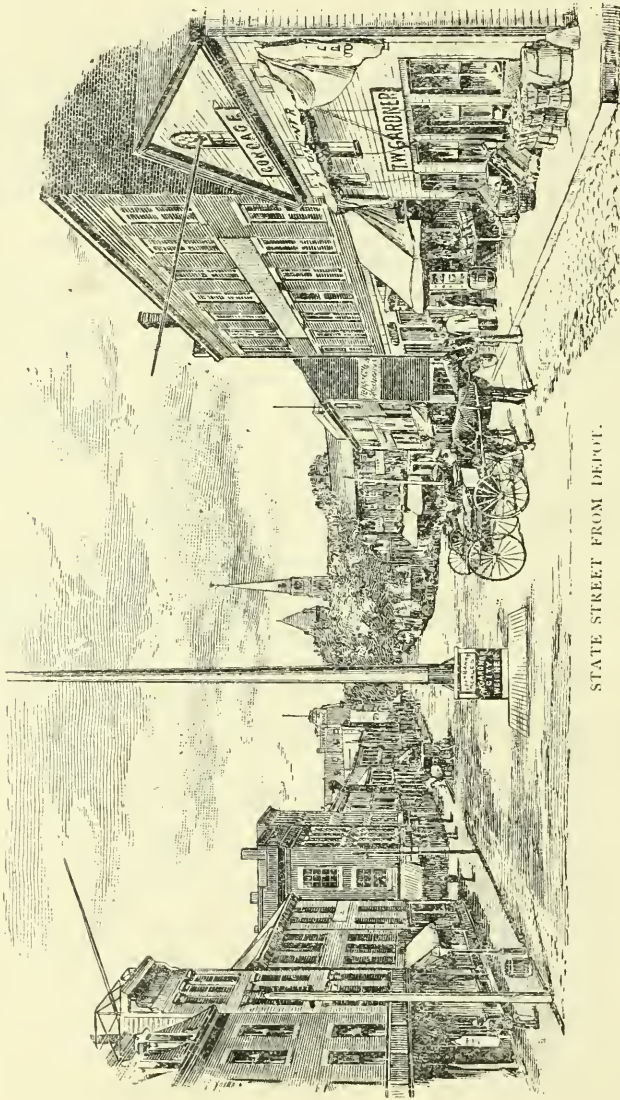
COFFEE'S,

GO TO

*A. M. Stacy's*

57 STATE STREET.

Try our Clover Chop Tea and  
Cream Java.



STATE STREET FROM DEPOT.

NEW LONDON

**District Messenger Service.**

CALLS FOR TELEGRAMS FREE.

Errands to all parts of the City delivered Promptly and Confidentially.

U. S. Express Co's, Money Order Rates,  
PAYABLE IN UNITED STATES & CANADA.

|                 |     |          |
|-----------------|-----|----------|
| Not over \$5.00 | - - | 5 Cents. |
| " 10.00         | - - | 8 "      |
| " 20.00         | - - | 10 "     |
| " 30.00         | - - | 12 "     |
| " 40.00         | - - | 15 "     |
| " 50.00         | - - | 20 "     |

PAYABLE IN EUROPE.

|                  |     |           |
|------------------|-----|-----------|
| Not over \$10.00 | - - | 10 Cents. |
| " 20.00          | - - | 18 "      |
| " 30.00          | - - | 25 "      |
| " 40.00          | - - | 35 "      |
| " 50.00          | - - | 45 "      |

**J. W. HARTSHORN,**

United States Ex. Co.

Telephone No. 9. P. O. Box No. 943.

**ST. JOHN & ROWE,**

Dealers in

**GROCERIES,**

ALES, WINES AND

**LIQUORS.**

BOTTLED LAGER FOR

FAMILY USE.

95 BANK STREET.

**Caulkins & Prentis,**

— GENERAL —

**FURNISHING  
UNDERTAKERS**

— AND —

**EMBALMERS,**

**NO. 10 BRADLEY STREET,**

— RESIDENCES —

*Samuel W. Caulkins,  
No. 4 Home Street,  
Eldridge P. Prentis,  
No. 10 Pearl Street.*

TELEPHONE CONNECTIONS.

**NEW LONDON**

Steam - Dye - House

AND

Carpet Beating Works.

58 MAIN STREET.

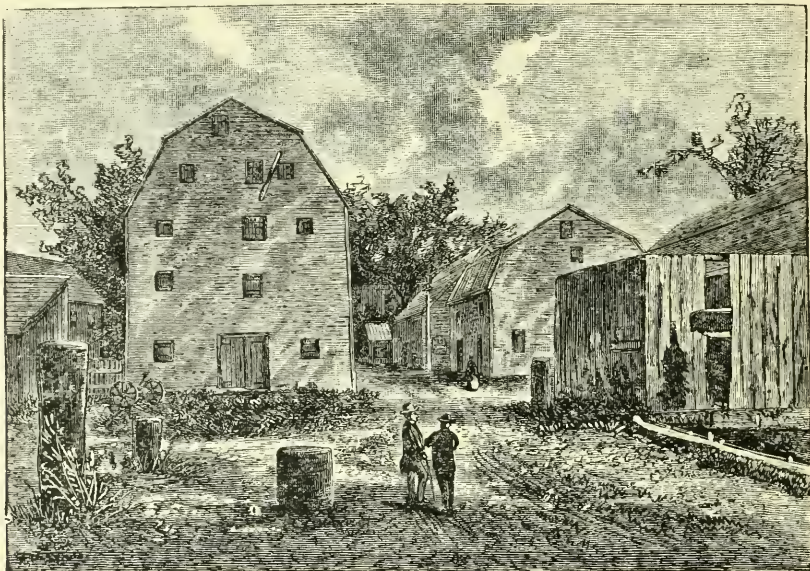
Shawls, Feathers, Kid Gloves, Etc.

**CLEANED OR DYED.**

Ladies and gentlemen's garments of every description dyed or nicely cleaned without ripping.

Feather Beds renovated, Packages sent by express will meet with prompt attention according to directions,

**JOHN LEE & SONS, Prop's.**



OLD PICTURE OF WILLIAMS & BARNES WHARF, ON WATER ST., AS IT WAS IN 1791.

**JOHN SALTER, & SON.**

**GRANITE AND MARBLE WORKS,**

GROTON, CONN.

AT CITY FERRY LANDING.



Monuments, Headstones and Cemetery Work  
of all Descriptions.

FIRST-CLASS WORK  
AT LOWEST PRICES.

## Gilbert Loseno, A<sup>g</sup>t.

Manufacturer and Dealer in

HARNESS,  
SADDLES,  
WHIPS,  
BLANKETS,  
ROBES

≡≡≡ AND ≡≡≡

HORSE GOODS  
GENERALLY.  
No. 127 BANK STREET.

## G. WILLIAMS & SON. BAKERS AND CONFECTIONERS,

No. 24 Golden Street.

Every thing contained in a first-class bakery can be found in our establishment. Breakfast and Tea Rolls, Biscuit, Rusks, Buns and an assortment of Cakes and Pastry comprising more than forty kinds.

Graham, Home-made, Vienna, French and Cream Bread fresh morning and afternoon every day.  
Orders promptly filled and delivered to any part of the City.

## CUT FLOWERS, FUNERAL DESIGNS, Decorative Plants for Weddings, Socials, Etc.

Choice line of Plants  
always on hand at the

LOWEST MARKET PRICES.

*Flower Gardens Planted and  
Cared for through the  
Season.*

W. E. Penleton, Florist,  
75 Bank Street.

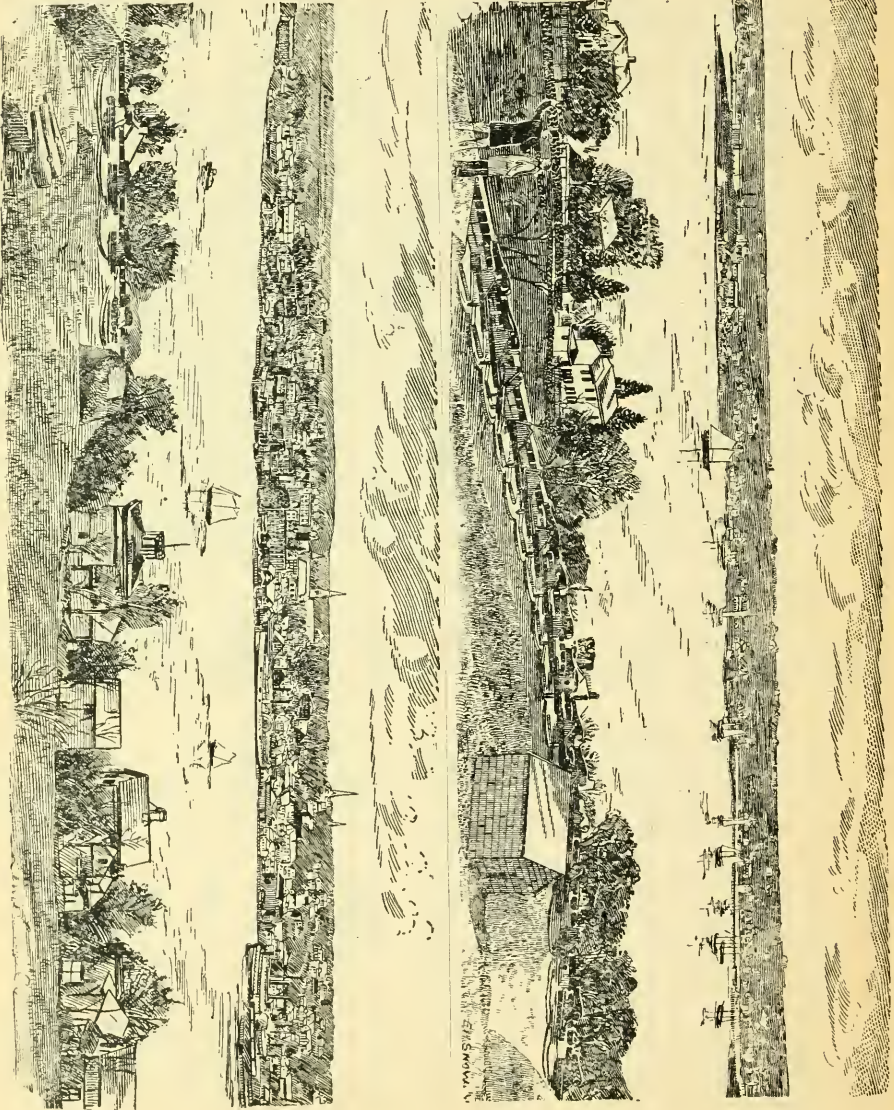
## W. F. M. ROGERS,

Att'y. and Counsellor,

AT LAW,

72 STATE STREET.

TWO BIRDS EYE VIEWS OF NEW LONDON.





“

”

# The Wardrobe

## ALWAYS AT THE FRONT:

### A WONDERFULL SHOWING

In new and seasonable goods of unquestioned merit in quality and style.

### PRICES ARE ALWAYS RIGHT

on every single article in this entire stock, we will please you in this direction, as you were never pleased before.

### DONT YOU FAIL TO SEE:

The innumerable attractions in our complete line of

**MEN'S CLOTHING,**

**YOUTH'S CLOTHING,**

**BOYS' CLOTHING,**

**CHILDRENS CLOTHING,**

Gents. furnishing goods of all descriptions including all the novelties in tennis and outing Shirts Blazers of all kinds,

**HATS, CAPS, TRUNKS, VALISES, &c.**

An unequalled assortment, including all of the newest styles and  
**NOVELTIES OF THE SEASON.**

**ALL PRICES AT THE LOW WATER MARK, FOR THE BEST OF**

**EVERYTHING. GO TO**

“

”

# The Wardrobe

**16 BANK STREET, D. S. MACHOL, PROP.**

WE ARE SELLING THE  
F. & Co. collars 2 for 25c.  
always sold for 20c. each,  
2 pair cuffs for 35c.  
always sold for 35c. pr. pair,  
F. & Co. Specials same prices,  
Genuine C. G. French  
half hose 25c. always sold  
for 50 cents,

Frederic H. Harris,  
**FINEST CUSTOM TAILORING,**  
62 State Street.







LIBRARY OF CONGRESS



0 014 113 140 0

