

Creating Structured Data for Local Self Government with Wikidata and OpenStreetMap

Manoj Karingamadathil
OpenDataKerala.org

Naveen Francis
OpenDataKerala.org

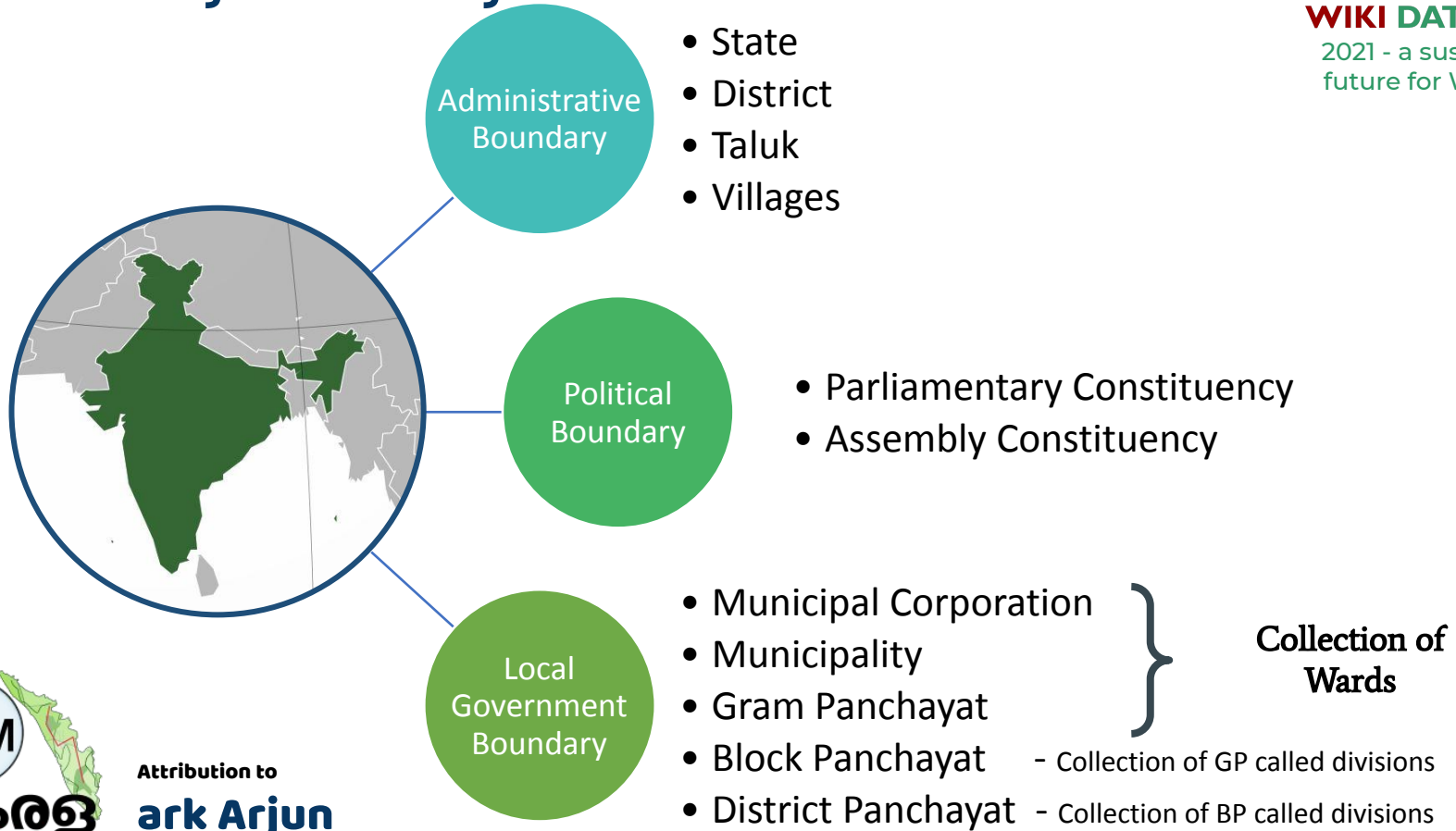


Introduction

- Usage in Malayalam Wikipedia
- Wikidata IDs for local govts.
- Linking OpenStreetMap with Wikidata QIDs.
- Other Attributes like Census, Literacy, Election datas
- A Linked Data Portal for Kerala

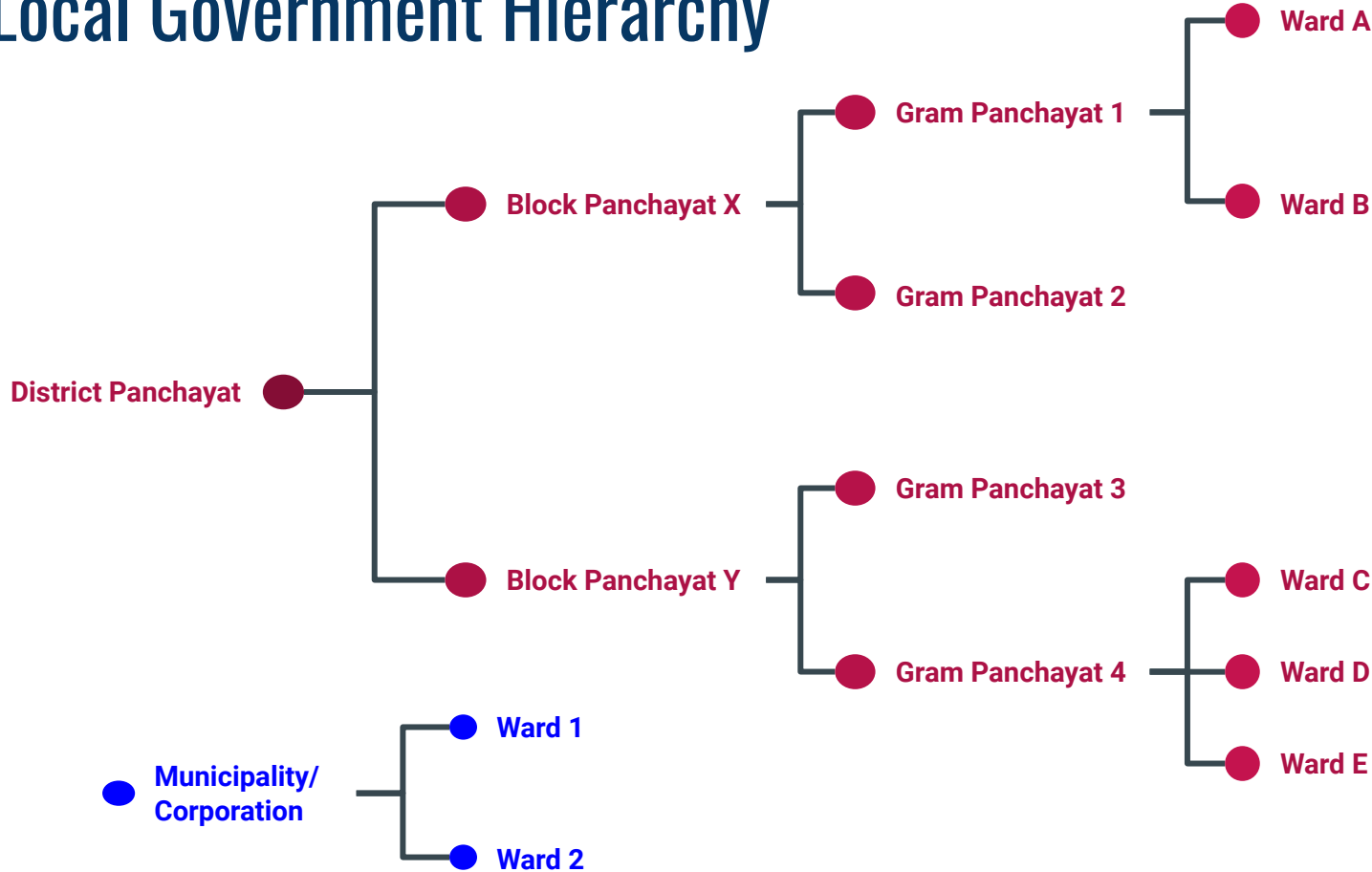
Local Self Government

The Boundary Hierarchy



Attribution to
ark Arjun

Local Government Hierarchy



Kerala's - Local Governments

Kerala has 941 Village Panchayats (Grama panchayats) and in the urban areas, it has 87 **Municipalities** and 6 Corporations, a total of 1034 Local Self Government Institutions.

- Malayalam wikipedia had a initiative to create articles for all LSG in 2005.
- In 2011, malayalam wikipedia has initiated a project for the creation of maps of all local governments in Kerala.

<https://ml.wikipedia.org/wiki/WP:MAPS>



Attributions - [Rajeshodayanchal](#), [Jaisuvas](#), [Ajaykuyiloor](#)

Wikidata ID creation for all local governments.

Wikidata entries for all LSG were created and updated with properties like population, literacy , no of admin units.

- LSG is divided in smaller admin units called Wards.
- 1034 LSGs is having a 21000 wards
- Wikidata entries for all 21000 wards were created during 2020.
- Maps were added to commons from Openstreetmap during the same time.

Data Model -

https://www.wikidata.org/wiki/Wikidata:WikiProject_Kerala/Sub_projects/LSGs



Linking Openstreetmap with Wikidata ID

- All 1034 LSG maps were added to Openstreetmap by OSM volunteers.
- Wikidata IDs were added all mapped entities
- Ward mapping has been completed from 8 out 14 districts. (21000+ wards mapping)

Open data maps of local bodies created

TIMES NEWS NETWORK

Kochi: Open street mapping (OSM) community in Kerala has created geospatial open data maps of all local bodies in the state numbering over 1200. The maps would be released as a public repository on Kerala Pivari on Sunday.

The maps are useful in presenting spatial or geographic data as interactive maps and infographics that tells stories and reveals patterns.

While institutions like Information Kerala Mission (IKM) and Kerala State Remote Sensing and Envi-



The maps would be released as a public repository today

ronment Centre (KSRSEC) had prepared local-body boundary maps up to ward levels, their non-availability in public domain and their unwillingness to share them with other departments had caused much difficulties.

Interestingly, most of the mapping using publicly available documents was carried out by a German national, Heinz Vieth, who volunteered to help the community.

"The mapping exercise took around four months. We launched the initiative as open maps for layering data related to Covid-19 as it

was not publicly available," said Naveen Francis, one of the key volunteers for the project.

While the maps were created by Francis, Manoj Karingamadathil and Heinz Vieth, OSM volunteers in the state helped in naming and tagging.

"Kerala and Rajasthan were the most awesome regions in India. I am helping to map India as a sign of gratitude," said Vieth.

Once ward-level layers are added, such maps would also be useful during local-body elections. "Volunteers have already created ward-level digital maps for Kan-

hangad municipality and Kochi corporation and ward-level maps would be available soon," said Karingamadathil. The vector maps are also being added to Wikipedia pages of panchayats in the state.

The community had been requesting authorities to release such maps in machine readable format since long but this was never done. The maps generated by the community would be available for download under Open Database Licence (ODbL) on websites openstreetmap.org and opendatakerala.org.

"The Spatial referenced digital maps we prepare are openly accessible and can be downloaded from the portal opendatakerala.org and are being widely used in the Wikipedia pages of local bodies and COVID-19 visualisation portals. The availability of more accurate geospatial data would be of great help during disaster management"




WIKI DATA CON

2021 - a sustainable future for Wikidata

Displaying OSM map in Wikipedia

- Infobox template of LSG was edited to display the maps from OSM



WIKIPEDIA
The Free Encyclopedia

Main page
Contents
Current events
Random article
About Wikipedia
Contact us
Donate

Contribute
Help
Learn to edit
Community portal
Recent changes
Upload file

Tools
What links here
Related changes
Special pages
Permanent link
Page information
Cite this page
Wikidata item

Print/export
Download as PDF
Printable version

Languages

[Edit links](#)

Manojk 99+ 99+ Talk Sandbox Preferences Beta Watchlist Contributions Log out

Article [Talk](#)

Read [Edit](#) [View history](#) More

Kochi Municipal Corporation

From Wikipedia, the free encyclopedia

The **Kochi Municipal Corporation** is the municipal corporation that manages a portion of the Indian city of Kochi (also known as Cochin). The Corporation manages 94.88 km² of Kochi city and has a population of 677,381^[1] within that area. It is the most densely populated city corporation in the state.^[2]


Contents [\[hide\]](#)

- History
- Structure
 - 2.1 Flag and emblem
 - 2.2 Naming
- Demography
- Election history
 - 4.1 2015 Local body elections
 - 4.2 2020 Local body elections
- Issues
- References
- External links


History [\[edit \]](#)

The port at Kozhikode held superior economic and political position in medieval Kerala coast, while Kannur, Kollam, and Kochi, were commercially important secondary ports, where the traders from various parts of the world would gather.^[3] The Portuguese arrived at Kappad Kozhikode in 1498 during the Age of Discovery, thus opening a direct sea route from Europe to India.^[4] With the arrival of Portuguese on Malabar Coast in the late 15th century CE, the power of Zamorin began to decline and Kochi began to emerge as the largest port city on the coast.^[5] The Cochin Municipal Corporation was formed on 1 November 1967 merging municipalities of Fort Kochi, Mattancherry and Ernakulam. The municipalities of Fort Kochi and Mattancherry were one among the oldest in the country.


The Fort Kochi had its first municipality established under Dutch influence on 18 April 1664 which was limited within Dutch occupied Kochi Stormburg Fort (Immanuel Fort). This was the oldest municipality recorded in Indian sub-continent. However, with handing over Kochi to British as part of Anglo-Dutch treaty, the municipality of Fort



Kochi Municipal Corporation



കൊച്ചി നഗരസഭ



Kochi Municipal Corporation

State	Kerala
Districts	Ernakulam

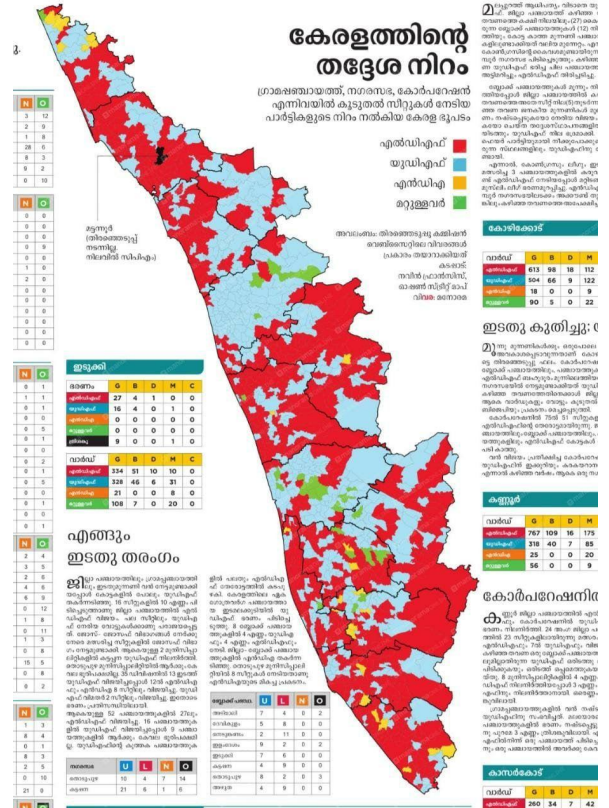
Covid19 : Hotspots Tracking



Boundaries are for reference only. Accuracy is not warranted.

The geographic areas marked here are based on the list of Hotspots

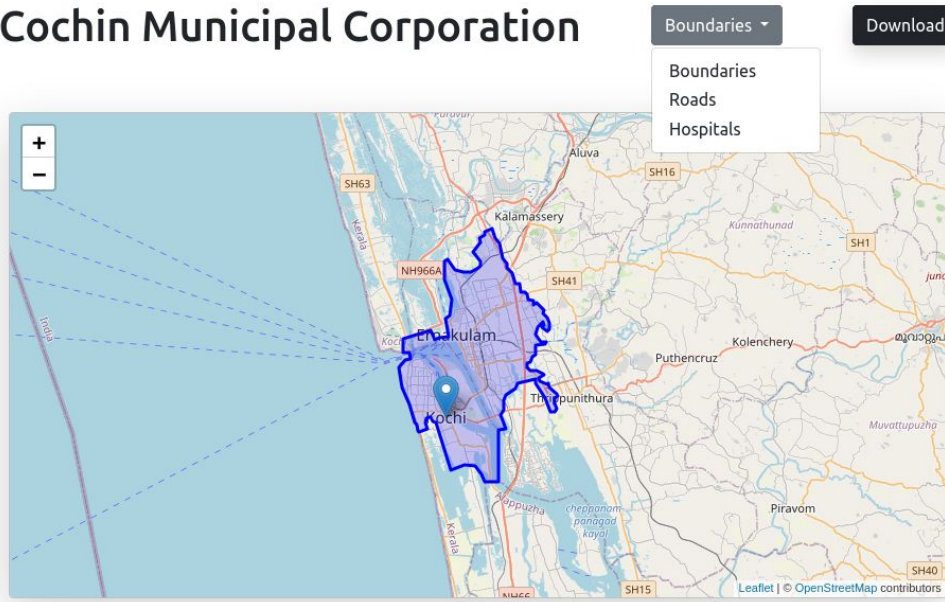
Election Data Visualization



Linked OpenData use case : Map Kerala !!!

- OpendataKerala took an initiative to create LOD website.

Cochin Municipal Corporation



MapKeralaAlpha

Your open data..

A Gateway to Geospatial Map Data of Kerala

Powered by Wikidata and OpenStreetMap

- experiments at <https://map.opendatakerala.org>



Thanks for your attention!

Get in touch with us:

Manoj Karingamadathil

user:Manojk
@manojkmohan

Naveen Francis

user:Naveenpf
@naveenpf

