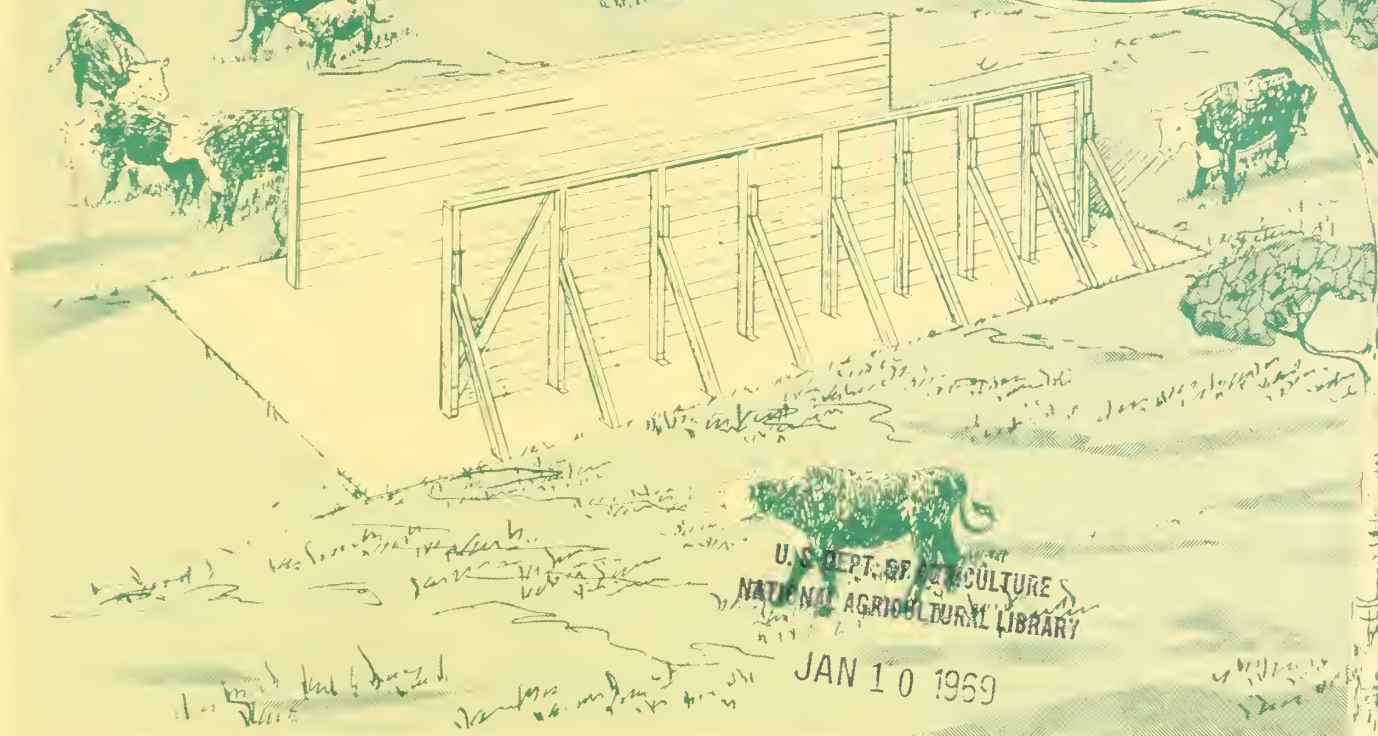


# BRACED WALL SILO

COOPERATIVE  
FARM BUILDING  
Plan No. 6021  
(1 SHEET)  
PLAN EXCHANGE



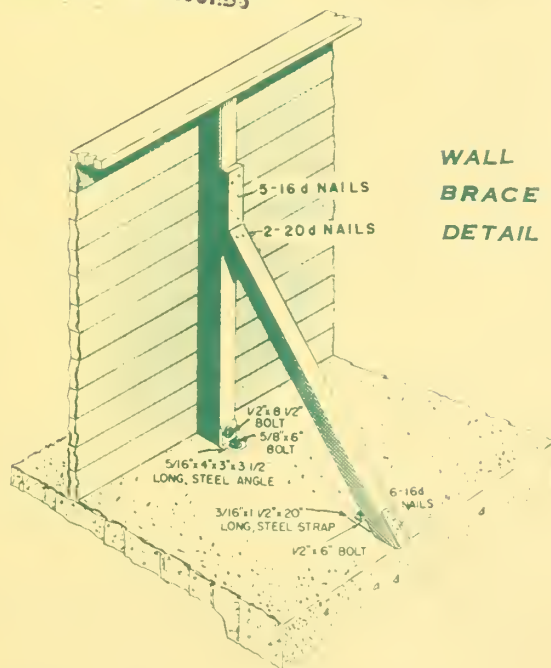
CURRENT SERIAL RECORDS

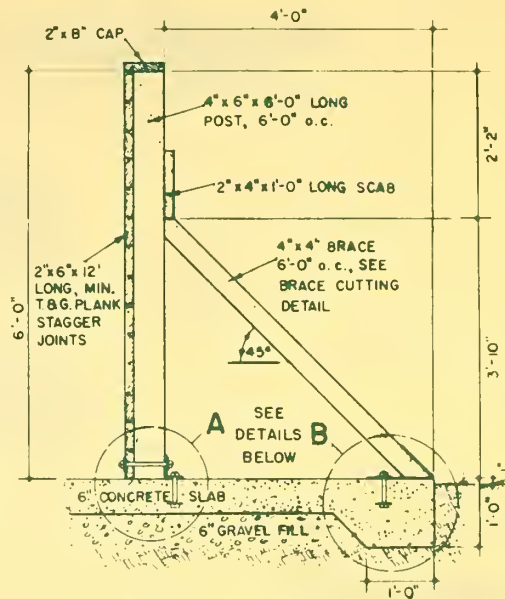
The braced wall silo is a bunker-type silo intended for use in areas where rock or other soil conditions make it impractical to set sidewall posts in the ground.

The silo should be built on a well-drained site provided with good access lanes for silage handling equipment.

Although the silo may be almost any desired size, wider silos are the most economical. Width, however, is generally governed by the size of the herd. There should be enough animals to consume a 4- to 6-inch slice of silage daily from the face of the stack to help reduce spoilage.

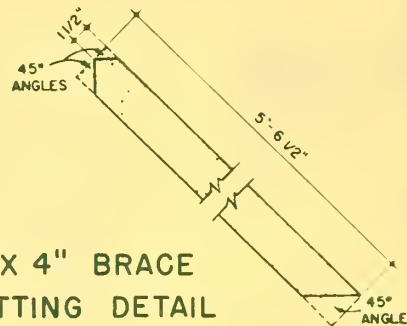
In all silos the wood sidewalls are 6 feet high and are erected on a 6-inch concrete slab with a thickened edge. Use construction grade Douglas-fir, or its equivalent, pressure-treated to a preservative retention of 5 to 7 pounds per cubic foot, as per American Wood Preservers Institute standards.



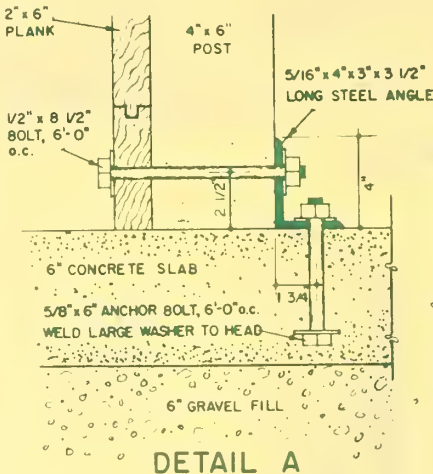


WALL SECTION

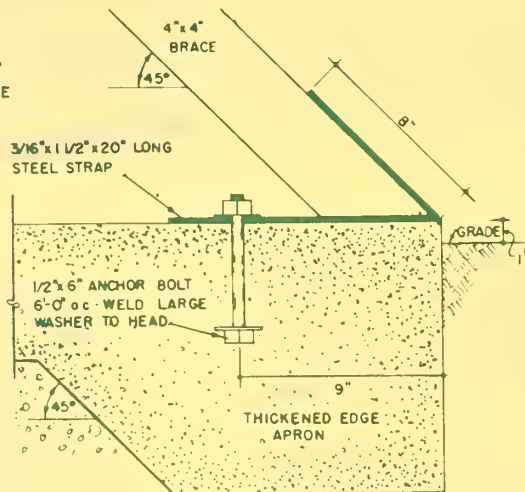
CONSTRUCTION DETAILS



4" X 4" BRACE CUTTING DETAIL



DETAIL A



DETAIL B

NOTES

GENERAL

- 1 SITE LOCATION TO BE WELL DRAINED
- 2 IF SELF-FEEDING IS DESIRED, ORDER PLAN 5872, "SELF-FEEDING FENCES"
- 3 USE GALVANIZED OR CADMIUM PLATED 10d NAILS TO FASTEN PLANK TO POSTS

CONCRETE

- 1 USE 3000 PSI AIR ENTRAINED MIX CONTAINING 6% AIR
- 2 SLOPE FLOOR AS INDICATED ON THE SIDE ELEVATION

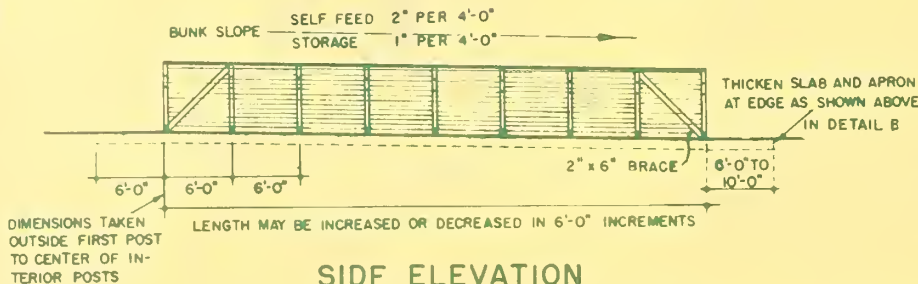
SILLO CAPACITIES

WIDTH (FEET)	LENGTH (FEET)	CAPACITY	
		(TONS)	(TONS FOR EACH ADDITIONAL 4')
12	36	55	67
16	48	106	94
20	60	175	123
24	72	265	154
28	84	378	187
32	96	516	222
36	108	680	259
40	120	936	324

CAPACITIES SHOWN ARE APPROXIMATE AND ARE BASED ON A SILAGE WEIGHT OF 40 LB. PER CU. FT.

A large-scale working drawing may be obtained from the extension agricultural engineer at your State university. There may be a small charge to cover cost of printing.

If you do not know the location of your State University, send your request to Agricultural Engineer, Federal Extension Service, U.S. Department of Agriculture, Washington, D.C. 20250. He will forward your request to the correct university.



SIDE ELEVATION

ORDER PLAN NO. 6021, BRACED WALL SILO

4

