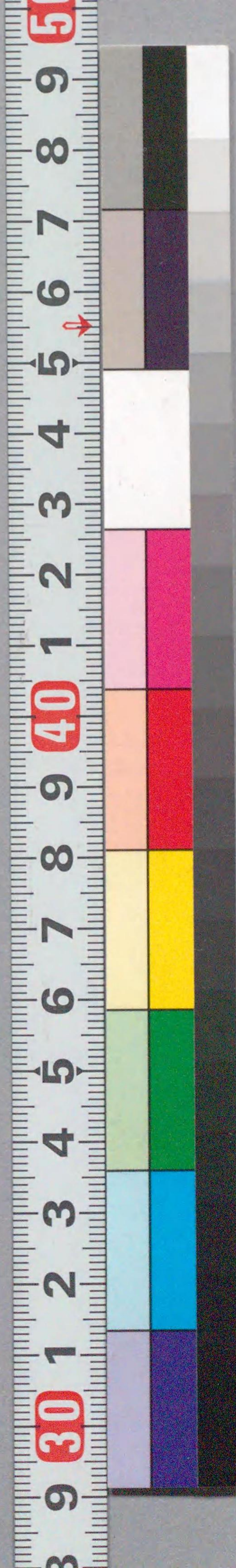


扇蟹目  
輾輻  
狂言末廣栄

207  
176



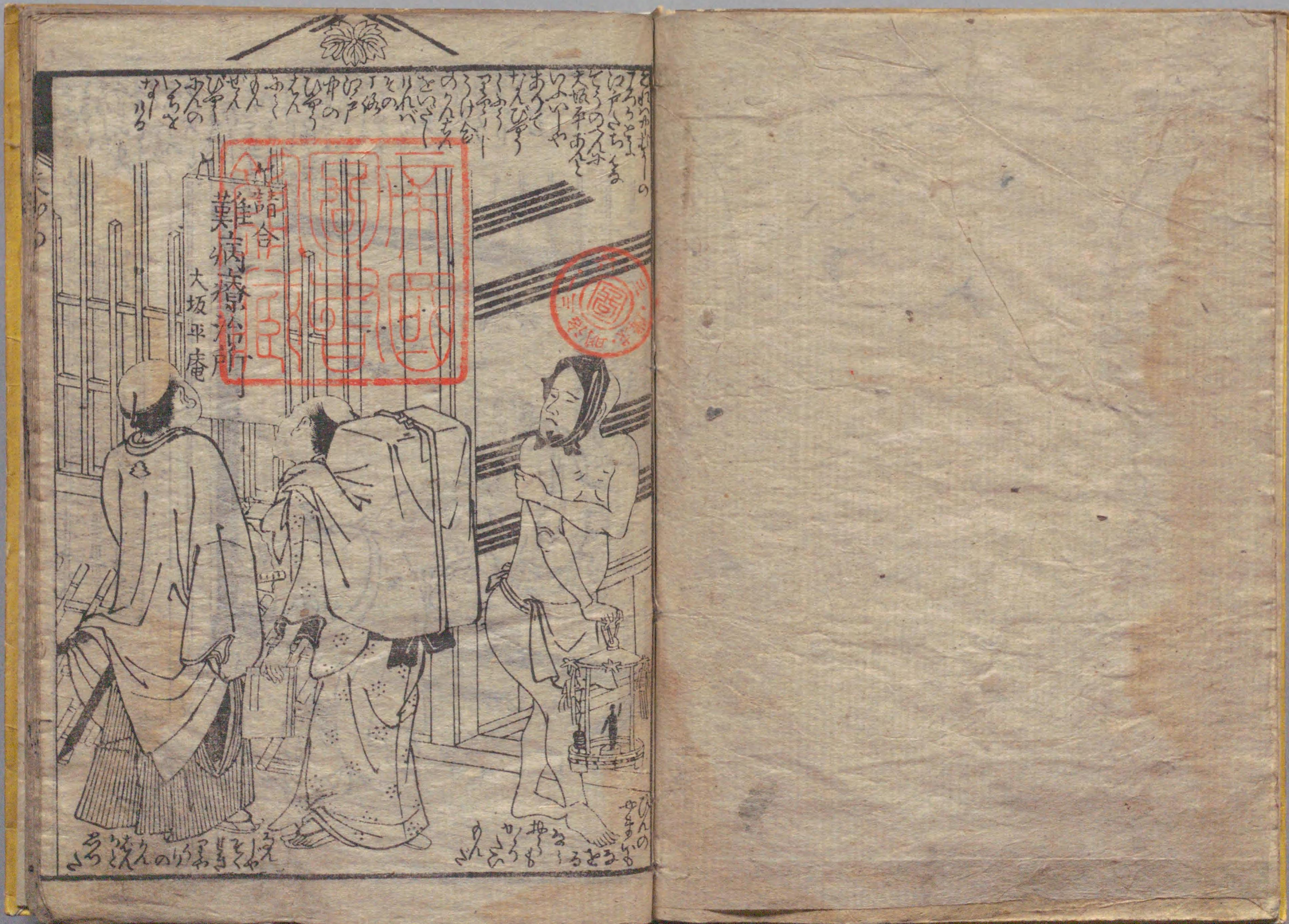


狂言末広栄の巻  
京傳作  
奇麗虫  
合三冊



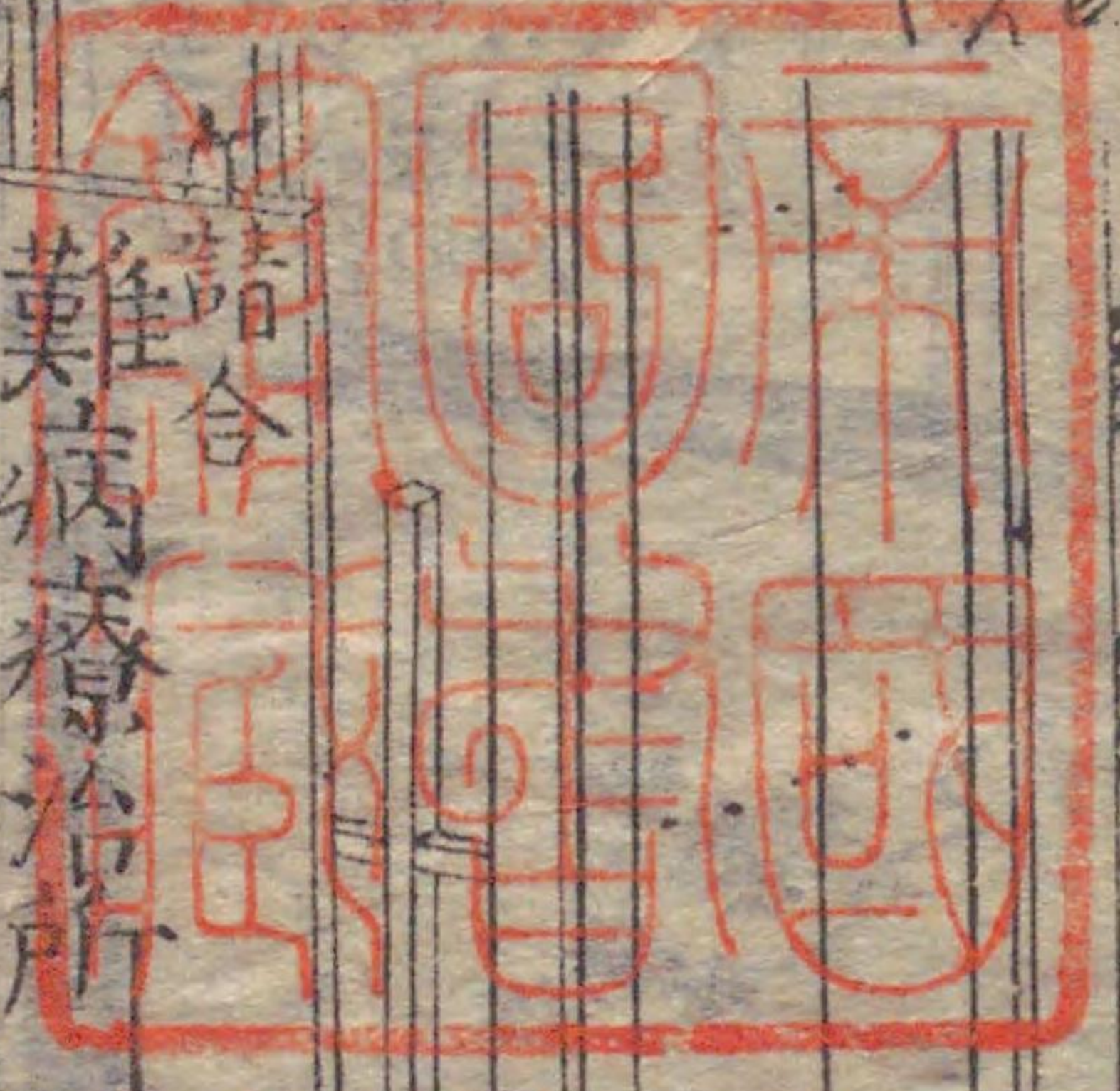
五月廿二日





Handwritten text at the top of the illustration, including the characters '大坂平庵' (Osaka Heian-an) and '難病療治所' (Nanbyō Ryōjisho).

諸合  
難病療治所  
大坂平庵



Handwritten text at the bottom left of the illustration.

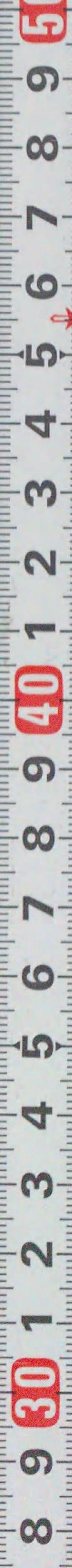
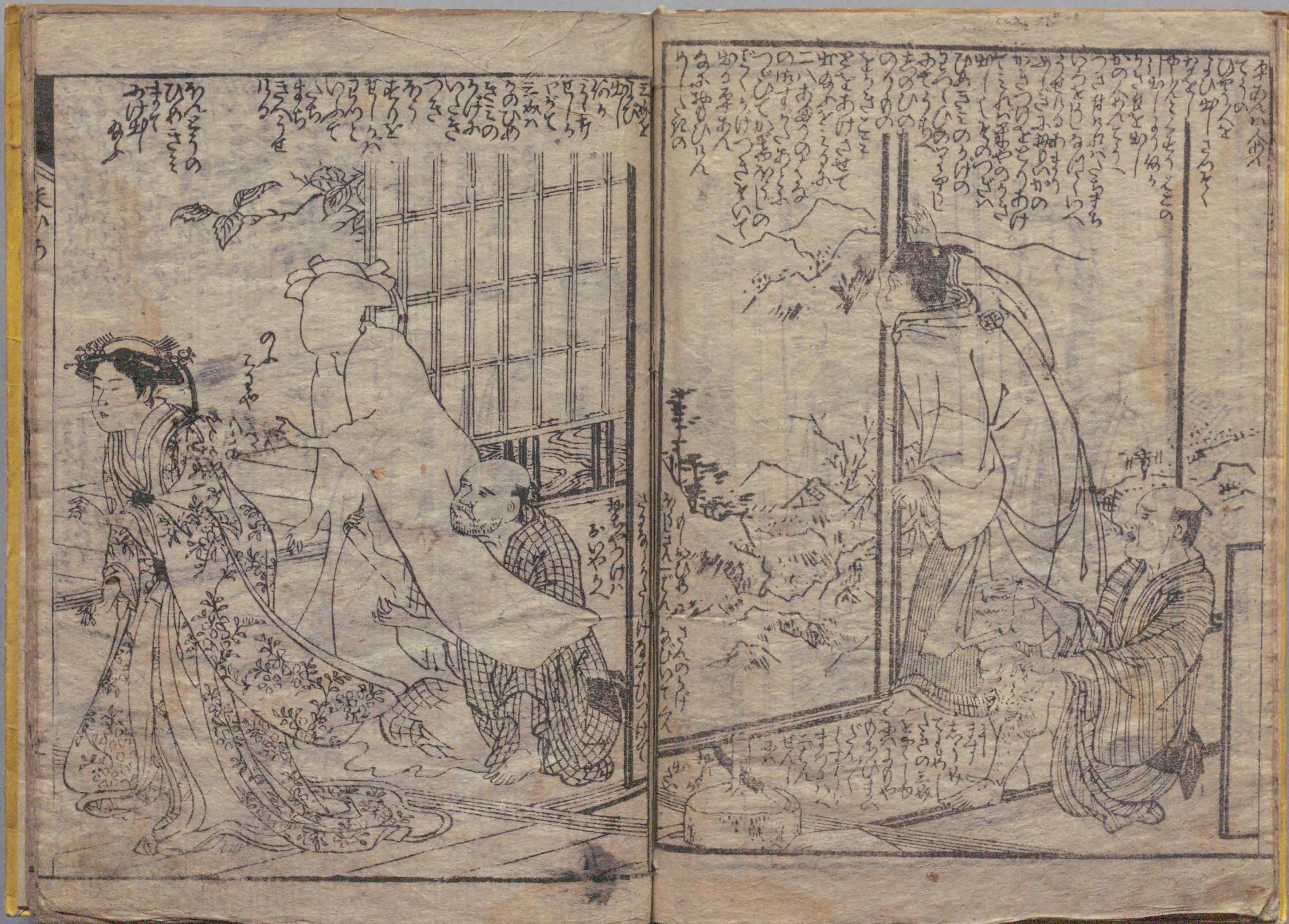
Handwritten text at the bottom right of the illustration.























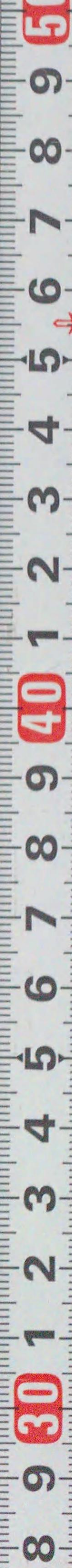




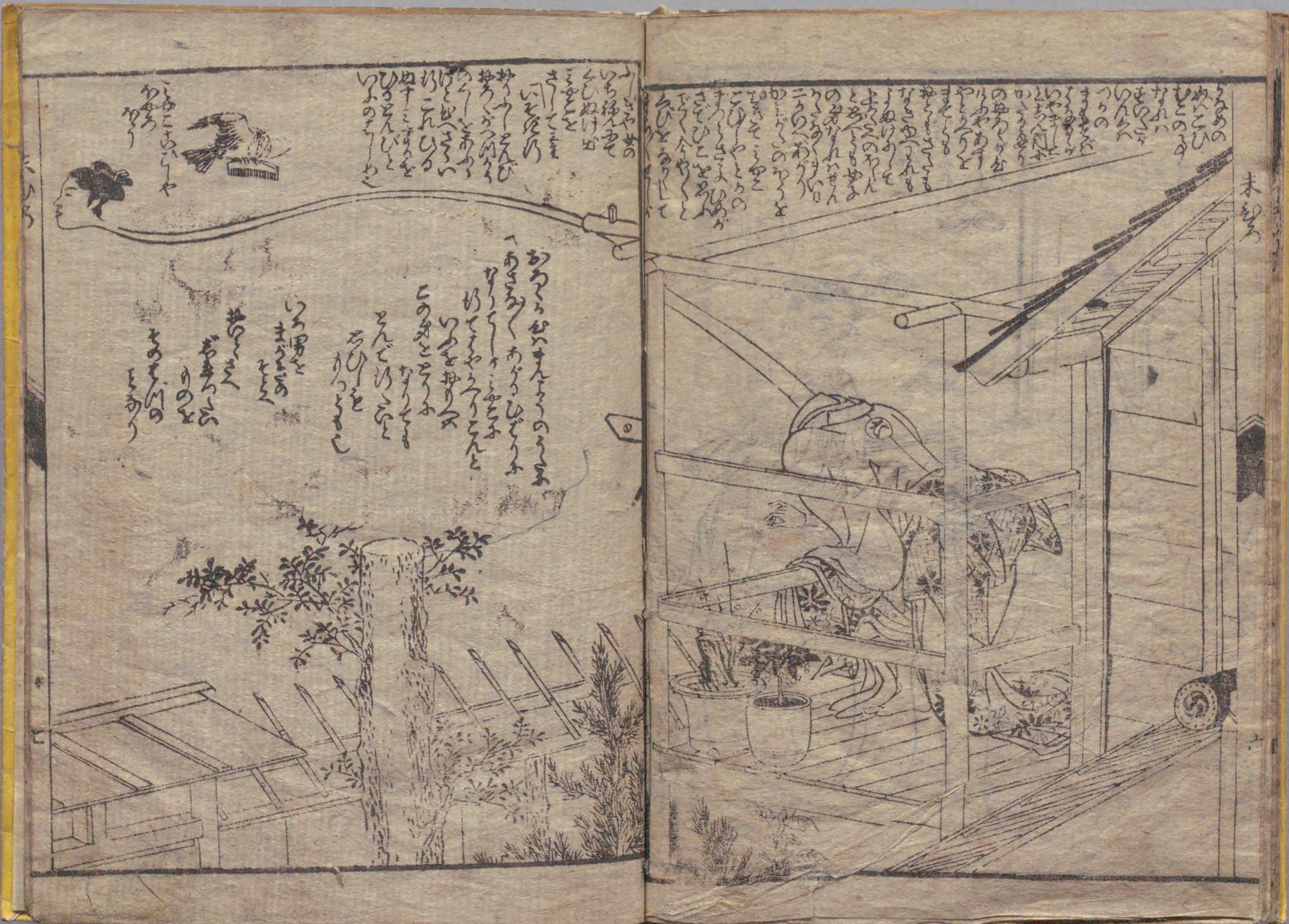
国立国会図書館 狂言末広栄 : 3巻 207-176

ガラス使用





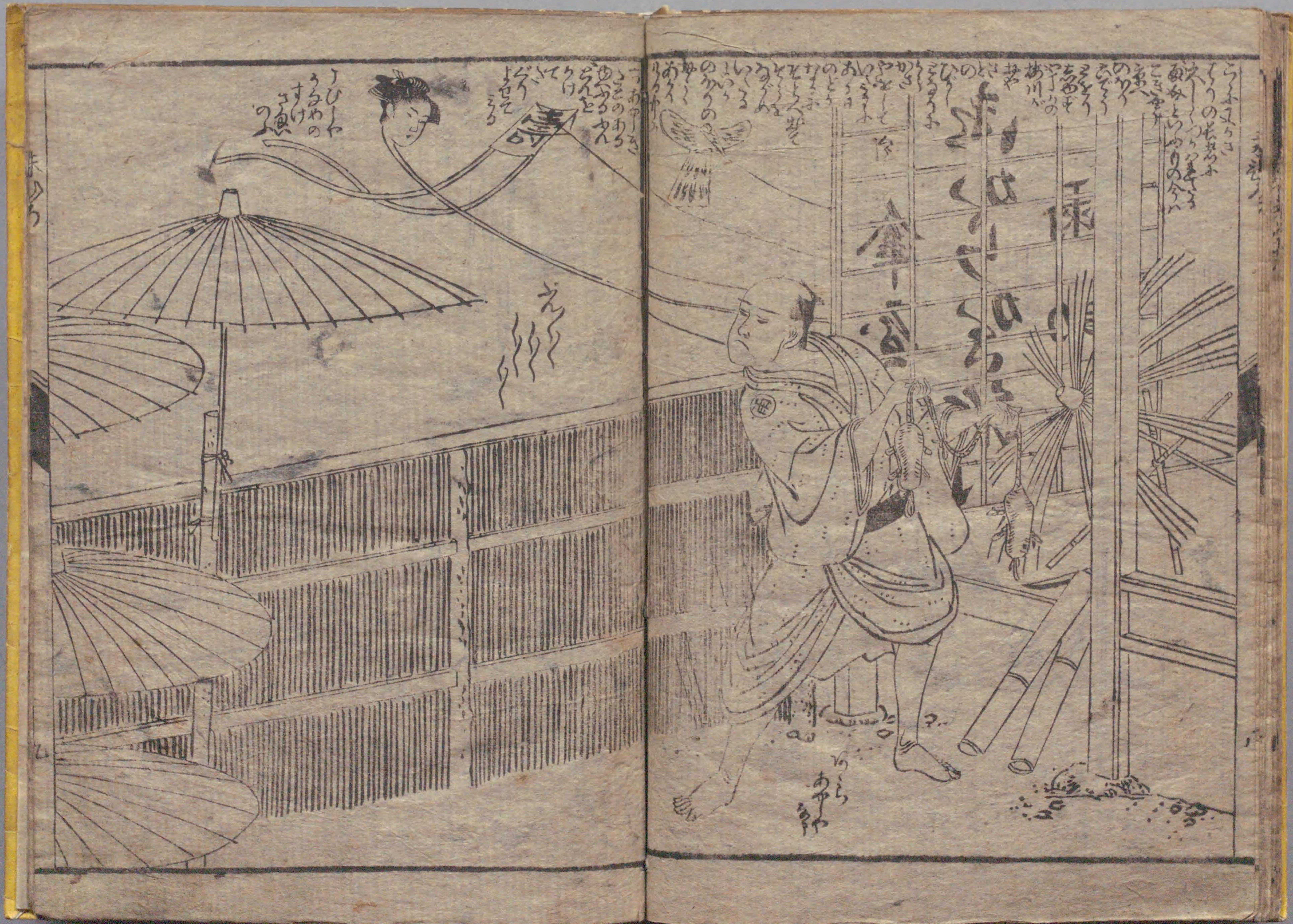




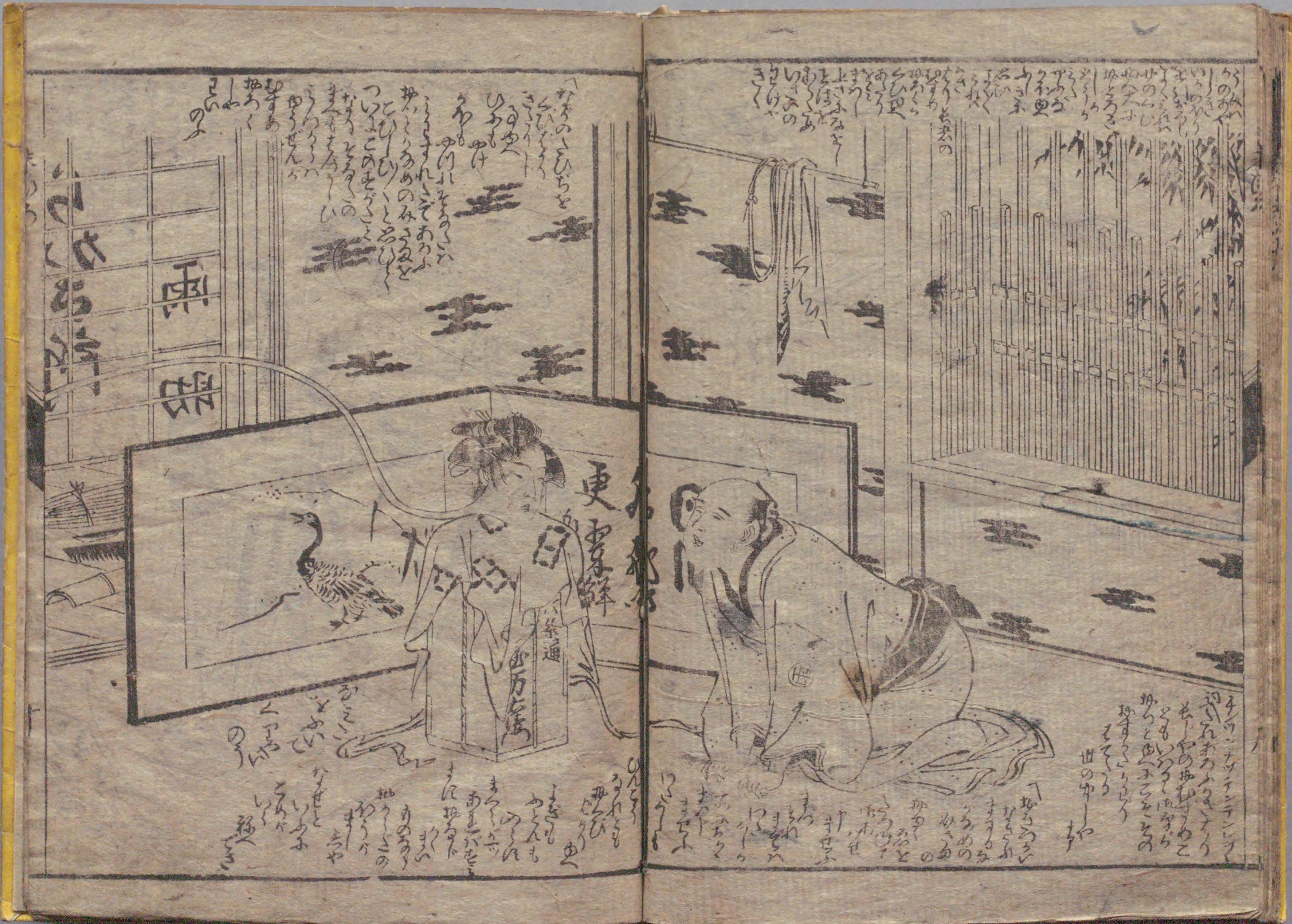








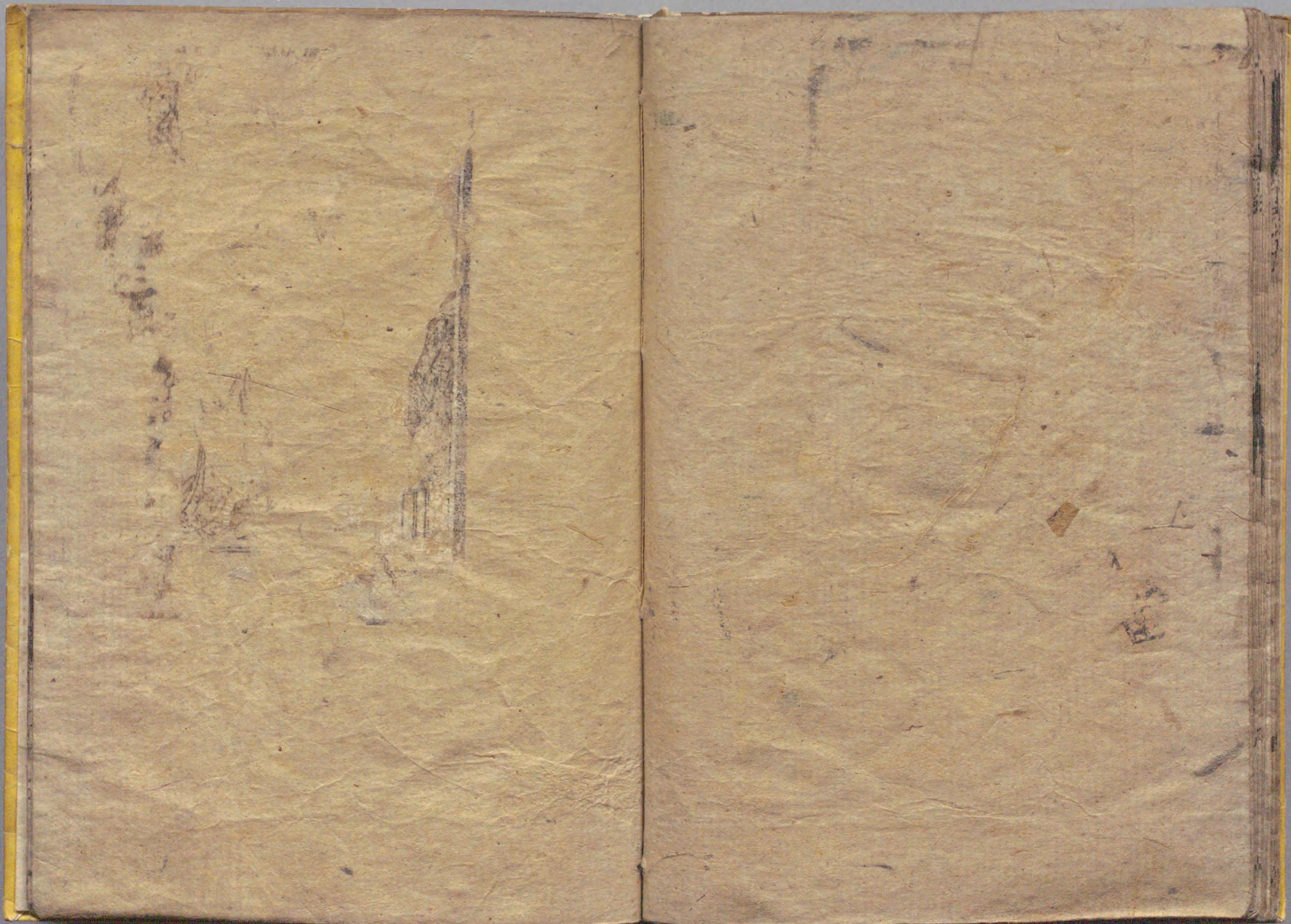
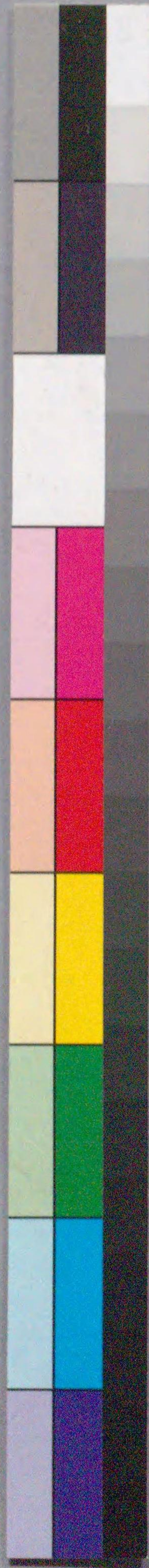












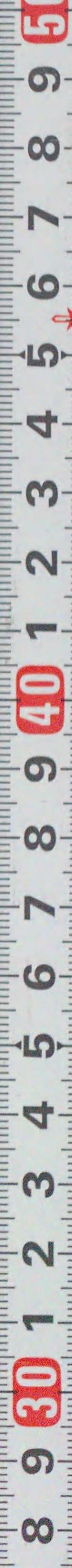
国立国会図書館 狂言末広栄 : 3巻 207-176

ガラス使用

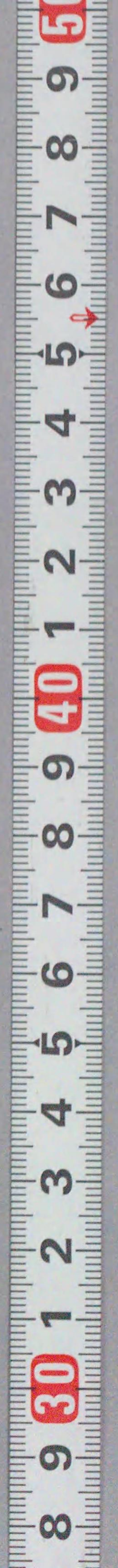






















207  
176

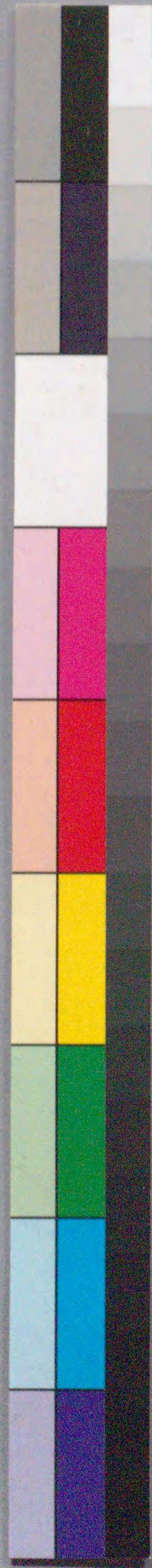
狂言



京傳作







8/12 国会





国立国会図書館 狂言末広栄 : 3巻 207-176

ガラス使用

