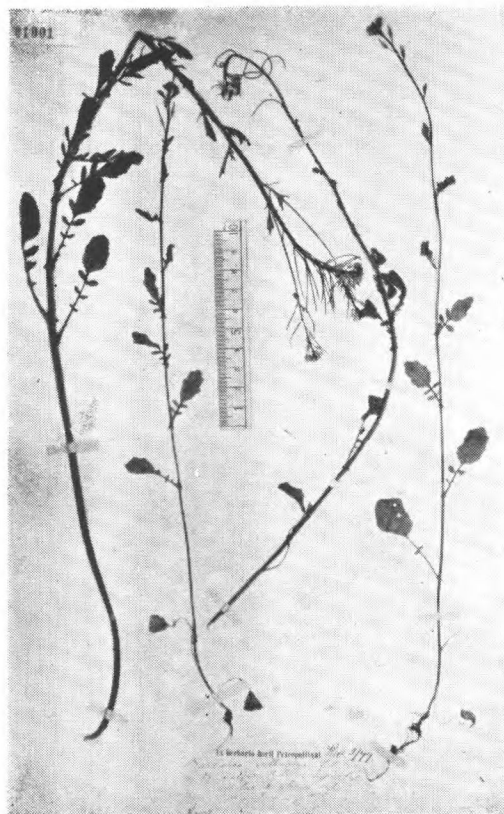




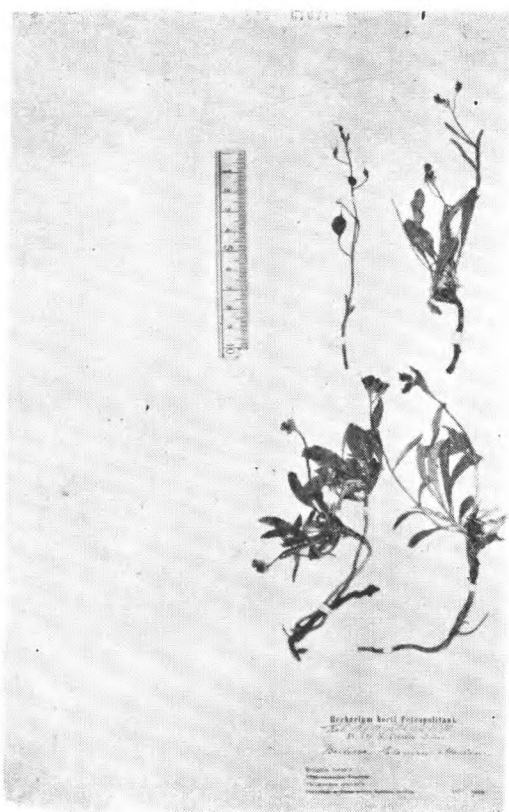
*Arabis Stelleri* DC.  
Oldham 998 朝鮮

*Barbarea* Beck.



*Barbarea vulgaris* R. Br. 黑龙江

*Berteroa* DC.

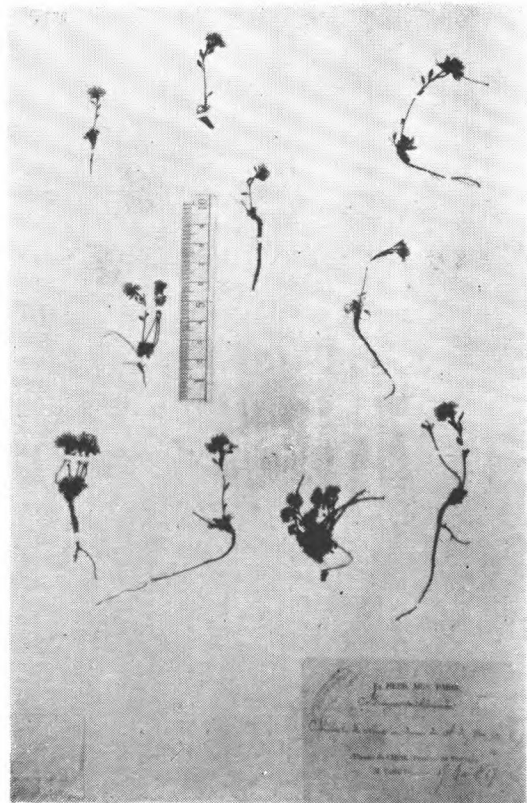


*Berteroa Potanini* Maxim.  
Potanin 北蒙古, 东天山

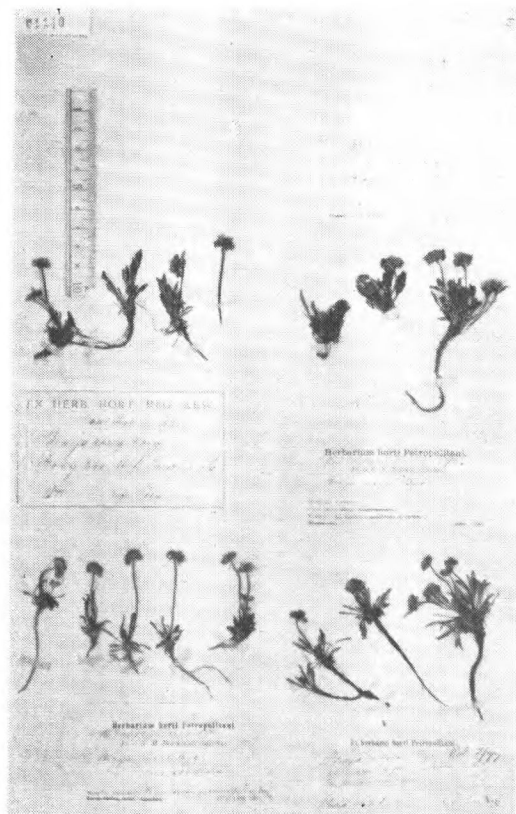
芥屬 *Brassica* L.



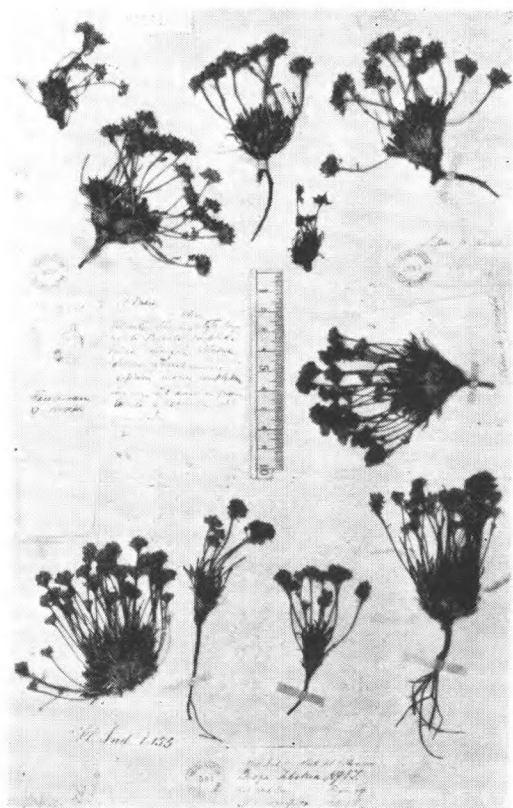
*Brassica cernua* (Thbg.) Forbes et Hemsl.  
Thbg. (type) 日本

柏雷草屬 *Braya Steinderg et Hoppe*

*Braya oxycarpa* Hk. f. et Thoms.  
Delavay 云南 yeng-tze-hay.



*Braya rosea* (Turcz.) Bge.  
Przewalski Siberia Orient. Tibet boreal.  
Kosogol, Mongolia occ. & bor.  
Potanin,

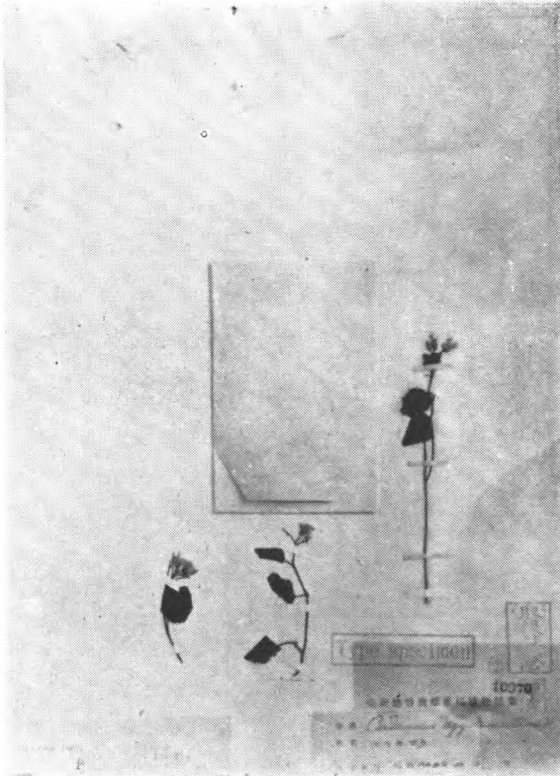
**Bunias L.**

*Braya tibetica* Hk. f. et Thoms.  
Tibet occ. Kara-Korum 18000

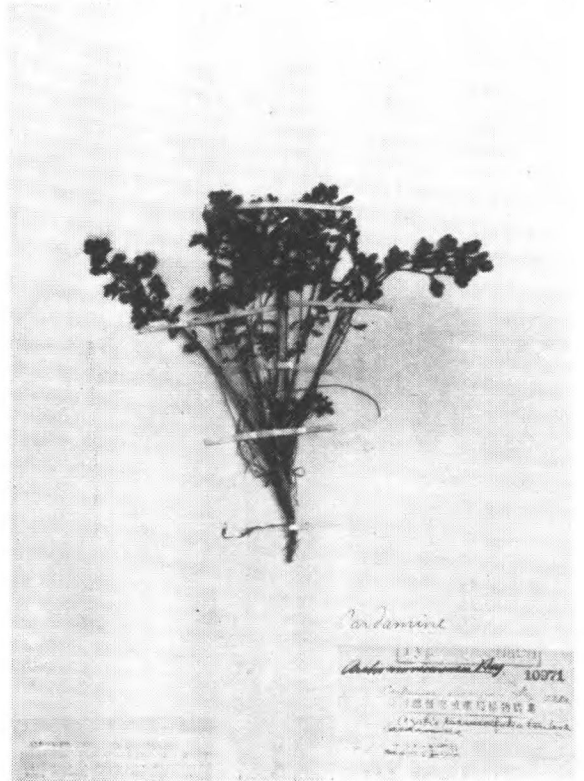


*Bunias cochlearioides* Murray  
J. Ross 辽宁辽河

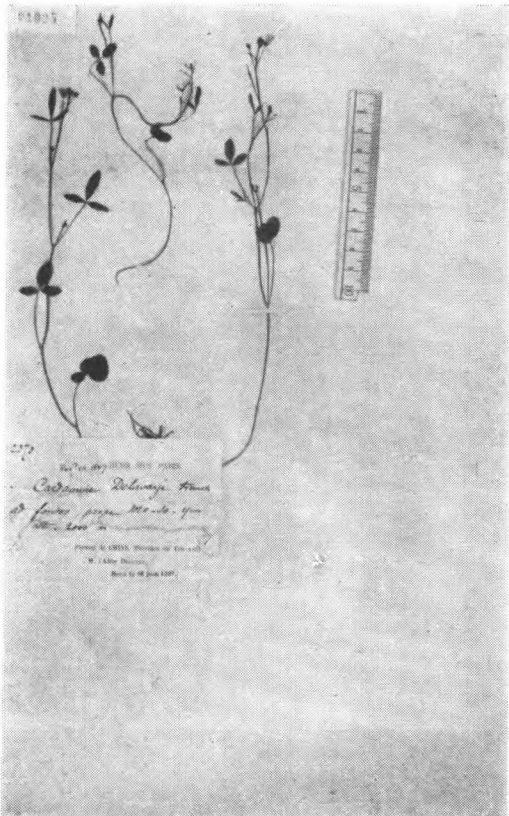


碎米薺屬 *Cardamine* L.

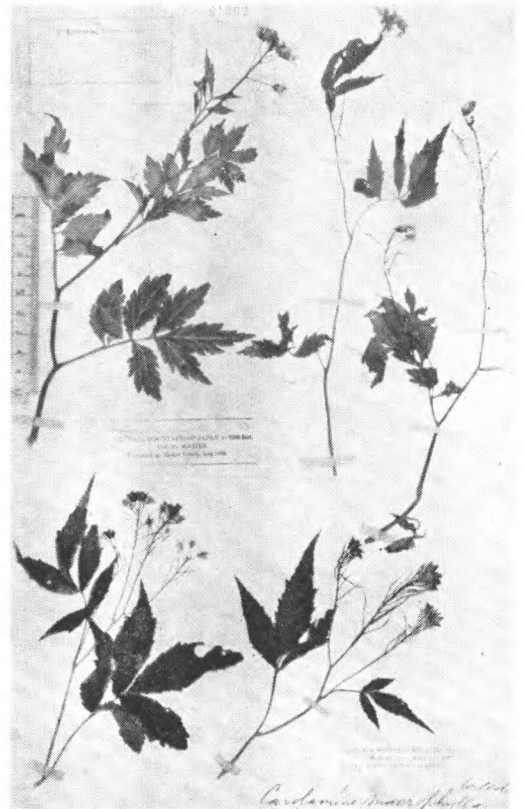
*Cardamine agyokumontana* Hay.  
S. Kato (Merotype). Mt. Agyoku  
台湾



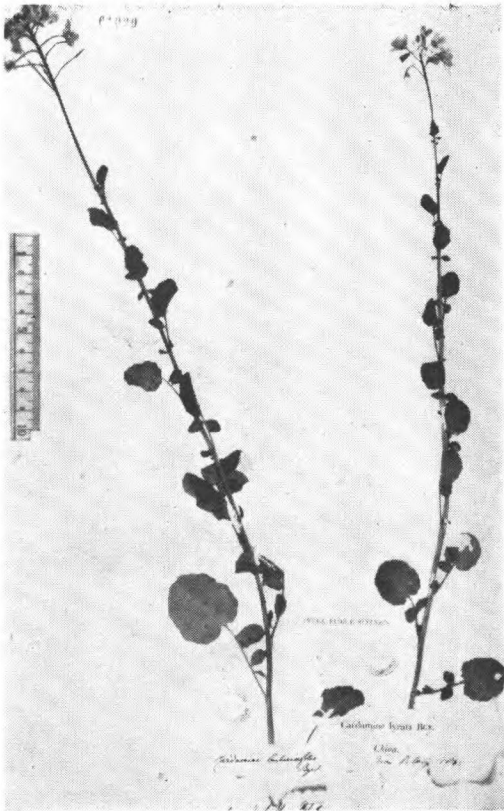
*Cardamine arisanensis* Hay.  
T. Kawakami et U. Mori 2252. (iso-  
syntype)  
Monte Morrison, 台湾



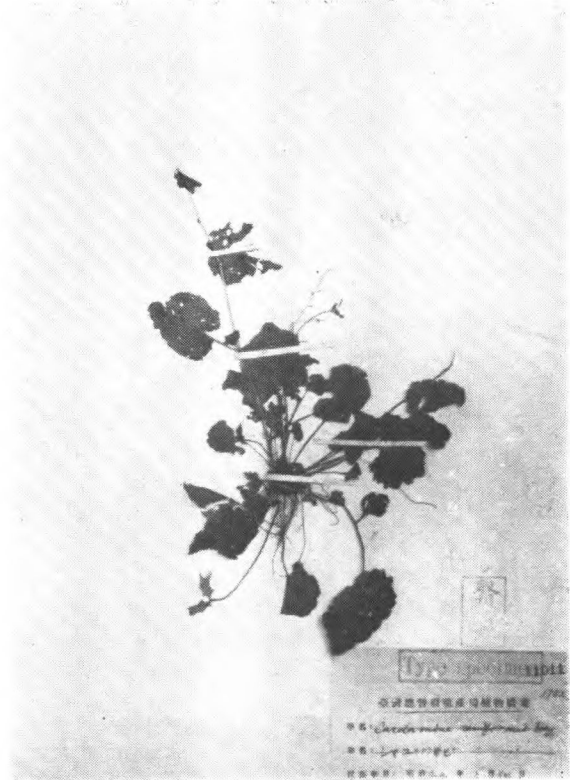
*Cardamine Delavayi* Fr.  
Delavay 2373. 云南



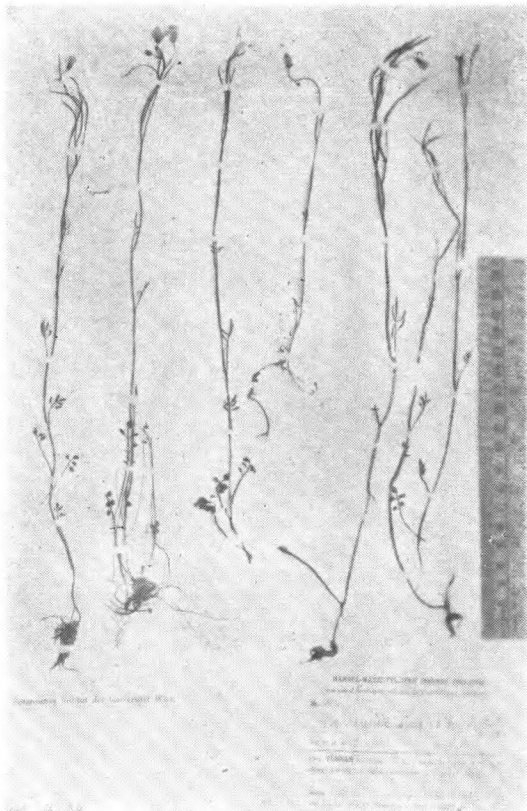
*Cardamine leucantha* (Tausch.) O. E. Schulz  
Maries, Central Mt. of Japan,  
James Mukden to Kirin.



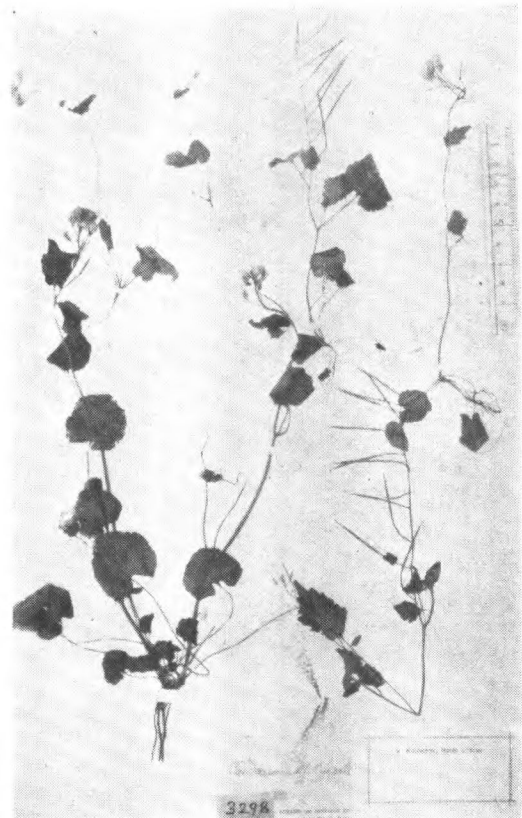
*Cardamine lyrata* Bge.  
Bunge (cotype) 中国北部



*Cardamine reniformis* Hay.  
T. Kawakani et U. Mori, 1982 (isotype.)  
Monte Morrison, 台湾

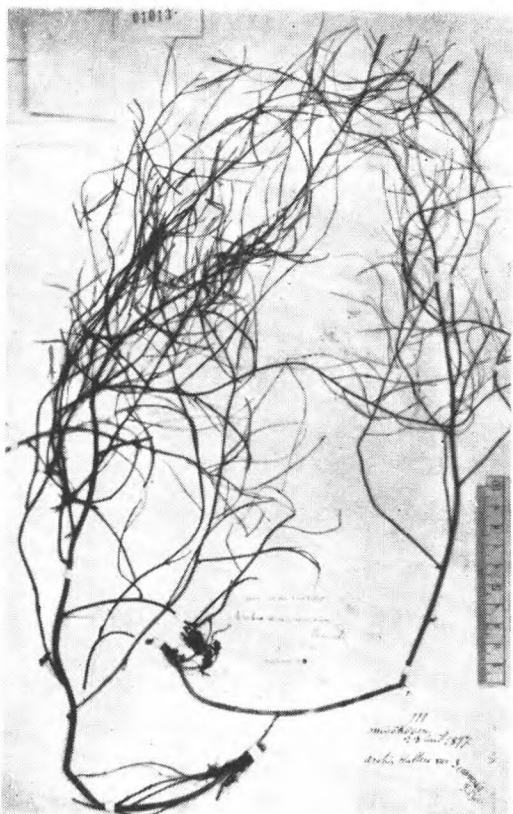


*Cardamine simplex* H.-M.  
H.-M. 4310 (syntype) 云南丽江

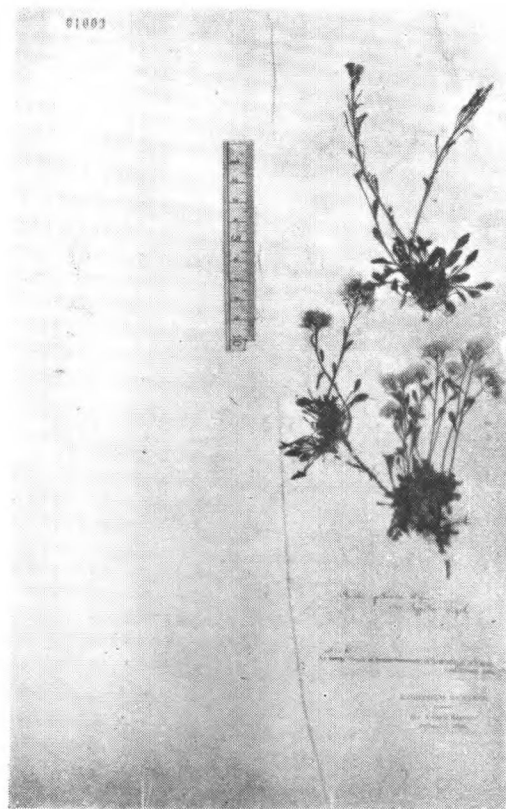


*Cardamine violifolia* O. E. Schulz  
Henry 3298, (type.) 湖北宜昌

*Cardaminopsis* (C.A. Meyer) Hayek.

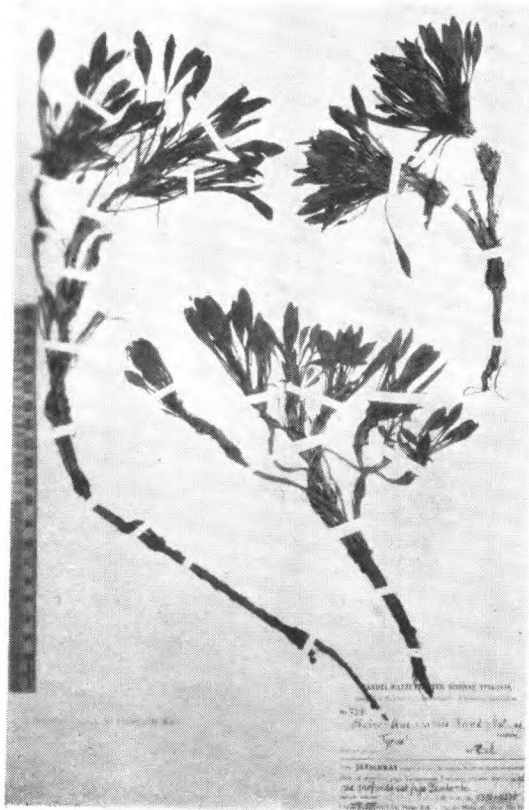


*Cardaminopsis amurensis* (N. Busch.)  
O. E. Schultz. Faurie 111. 北朝鮮



*Cardaminopsis hispida* (Mygind) Hayek  
Czekanowski. Olenek.

桂竹香屬 *Cheiranthus* L.



*Cheiranthus acaulis* H.-M.  
H.-M. 7318 (type) 木里



*Cheiranthus Forrestii* (W. W. Sm.) H.-M.  
Forrest 19687. 云南长澜



*Chorispora* R. Br.



*Cheiranthus roseus* Maxim.  
Przewalski 甘肃 Tibet borealis

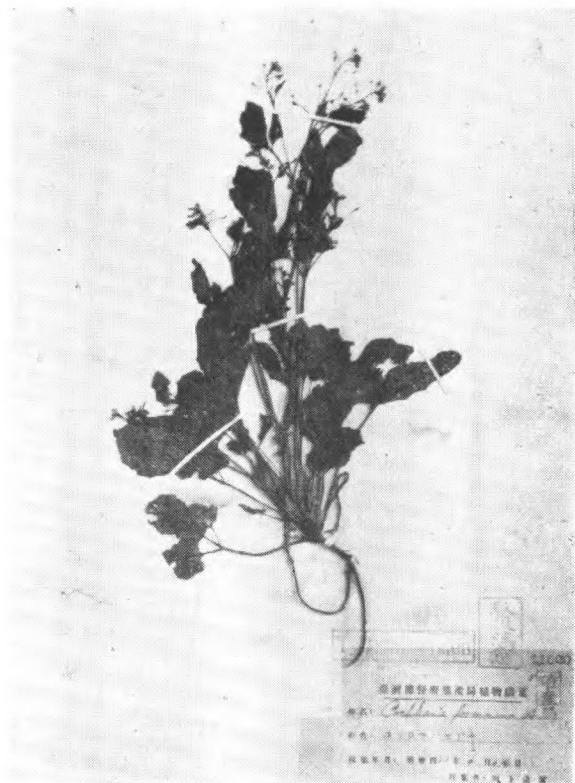


*Chorispora sibirica* (L.) DC.  
Chanet 795 河北正定府

辣根屬 *Cochlearia* L.



*Cochlearia alatipes* H.-M.  
H.-M. 12097 (type.) 湖南武岡云山



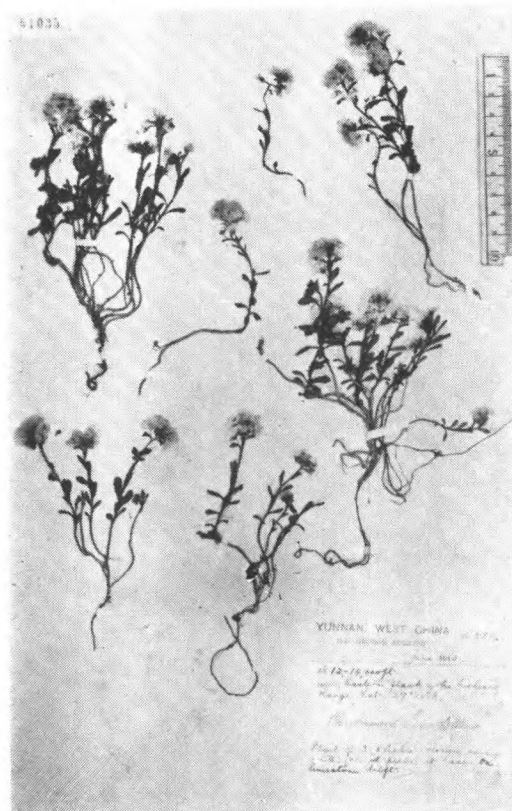
*Cochlearia formosana* Hay.  
T. Kawakami et U. Mori 5069 (isotype.)  
Shinko, Remogansha, 台湾

柿娘蒿屬 *Descurainia* Webb. et Berth.



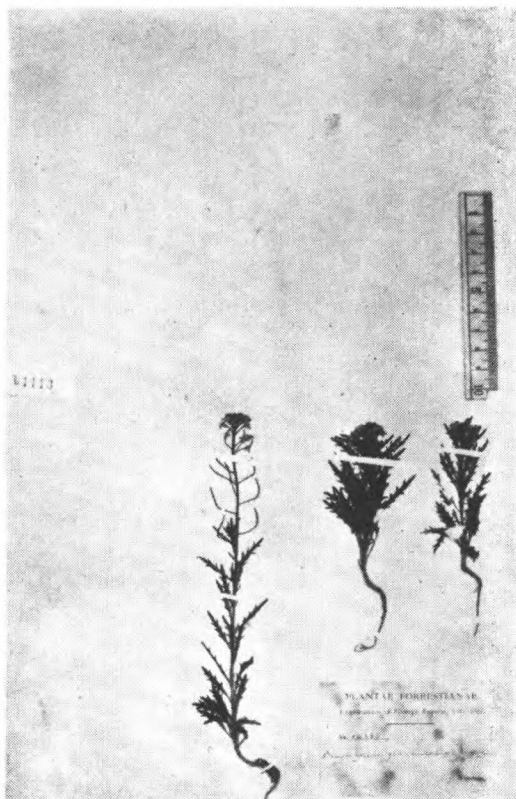
*Descurainia Sophia* (L.) Webb. ex Prantl. var. *dolichopetala* O. E. Schulz E. Faber. 苏, 芝罘

双果屬 *Dipoma* Franchet



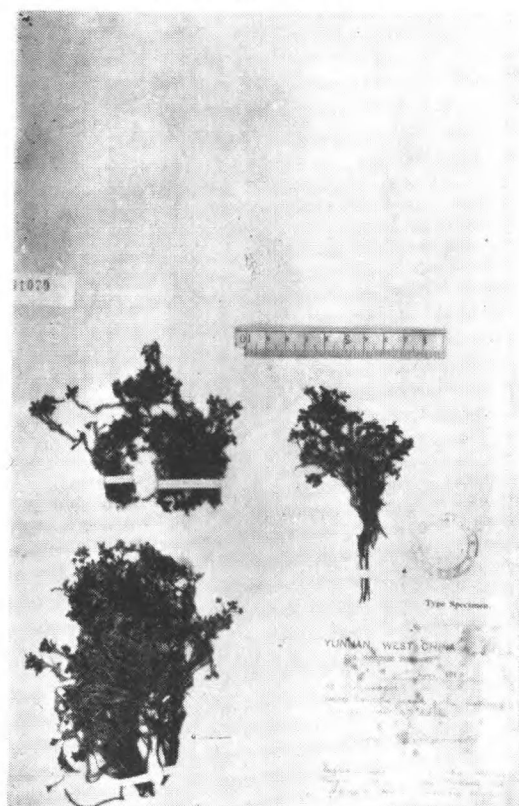
*Dipoma iberideum* Fr. Forrest 5814. 云南丽江

花旗竿屬 *Dontostemon* Andrz.

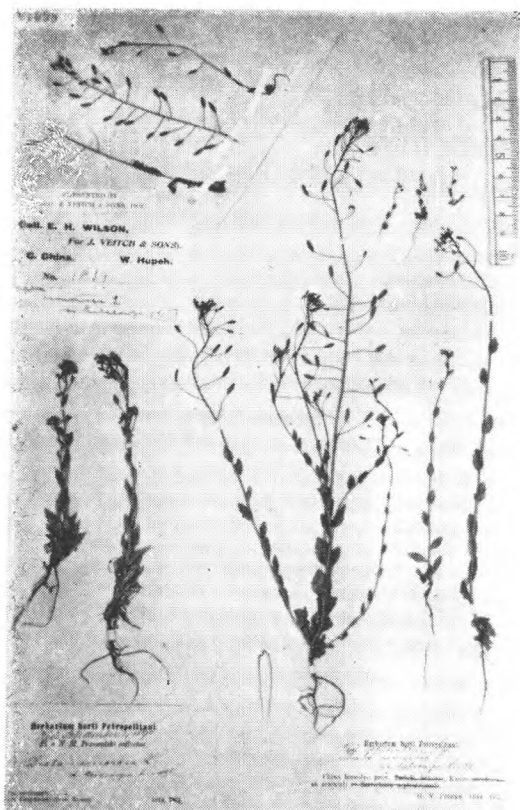


*Dontostemon glandulosum* (Kar. et Kir.) O. E. Schulz Forr. 14380. 云南

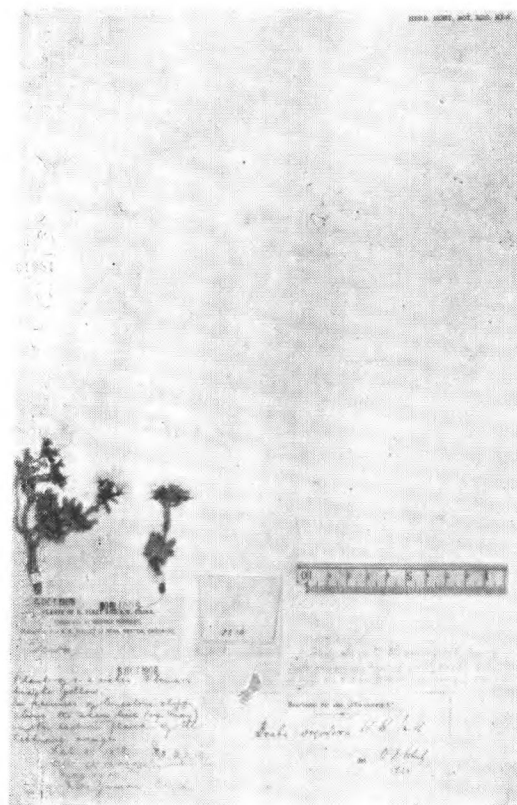
葶藶屬 *Draba* L.



*Draba alpina* L. var. *involucrata* Sm. Forr. 5732 (type.) 云南丽江

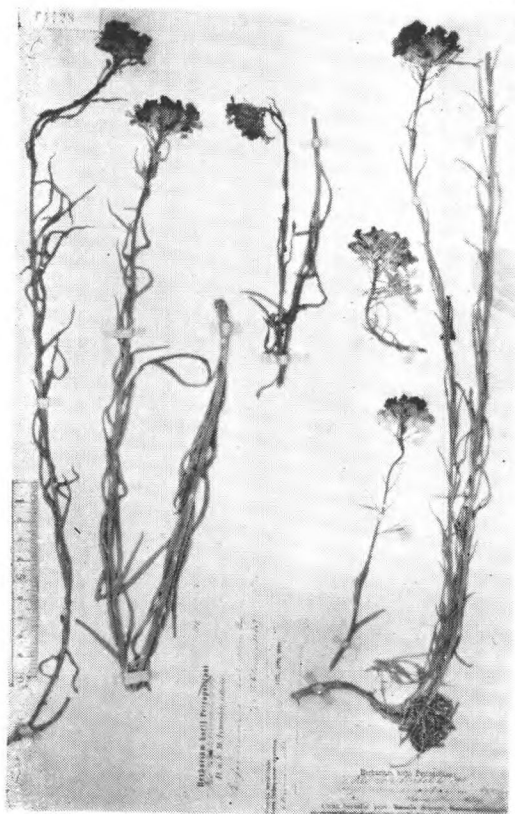


*Draba nemorosa* L.  
Wils. (Veitch) 1839. 湖北西部,  
41890 Przewalski 甘肃东部

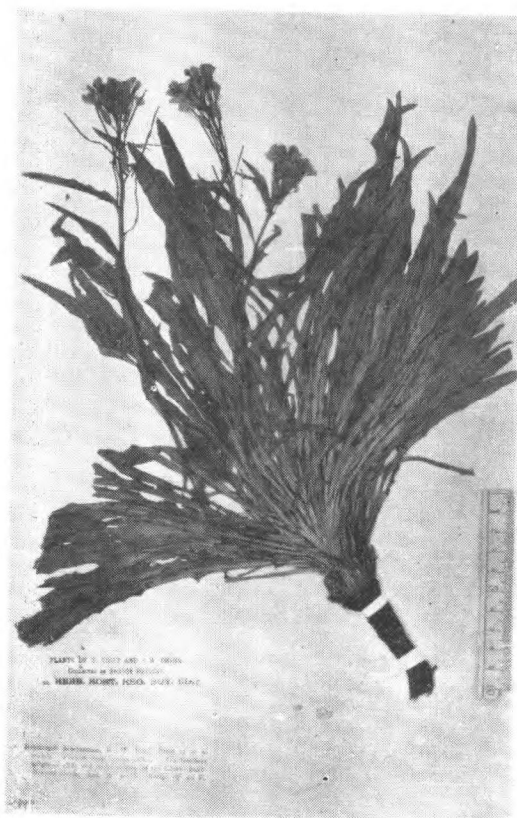


*Draba oreodoxa* W. W. Sm.  
Forr. 2210. 云南丽江

糖 薺 屬 *Erysimum* L.

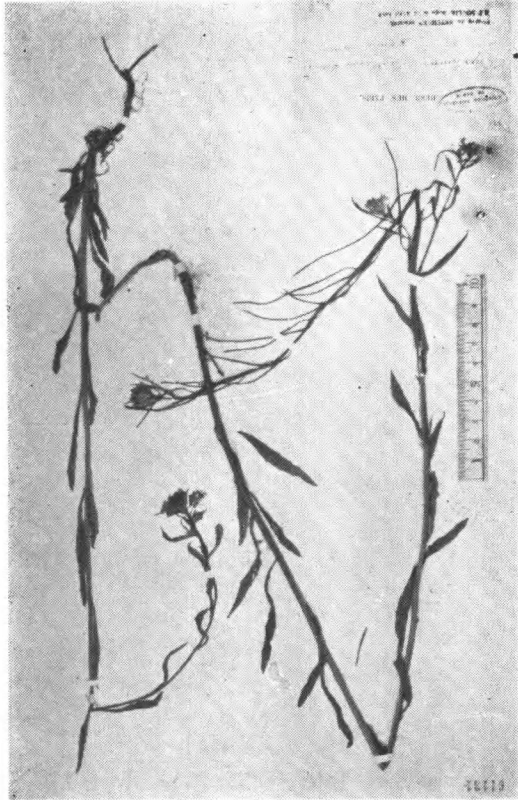


*Erysimum aurantiacum* (Bge.) Maxim.  
Potanin 山西, Przewalski 蒙西

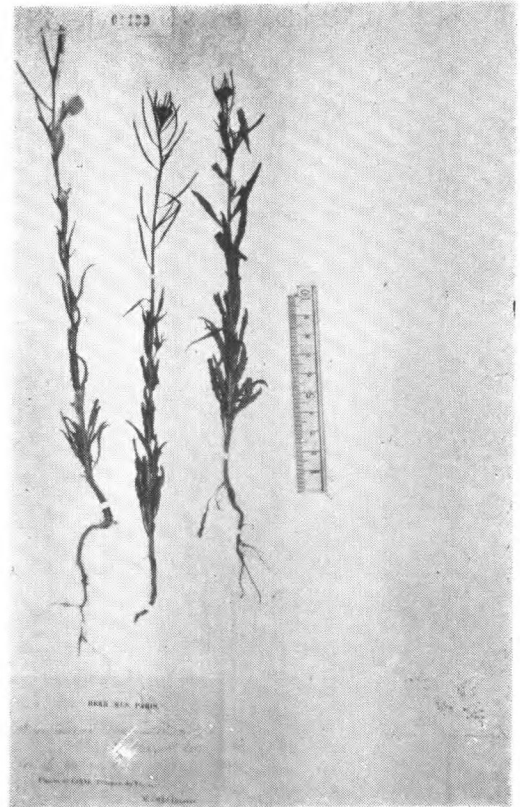


*Erysimum Benthamii* Paul Mounet  
Soulie 32 四川东部

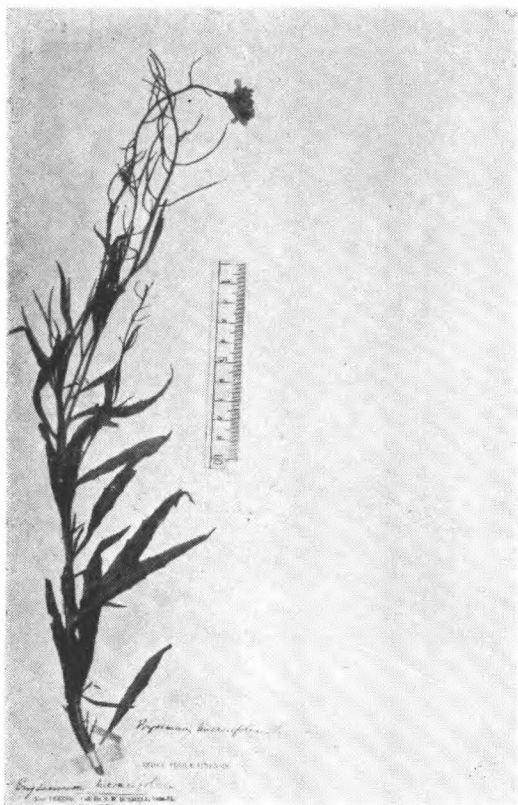




*Erysimum bracteatum* W. W. Sm.  
 Forr. 21996. 云南剑澜



*Erysimum cheiranthoides* L.  
 Delavay 云南摩些营



*Erysimum hieracifolium* L.  
 S. W. Bushell. 北京

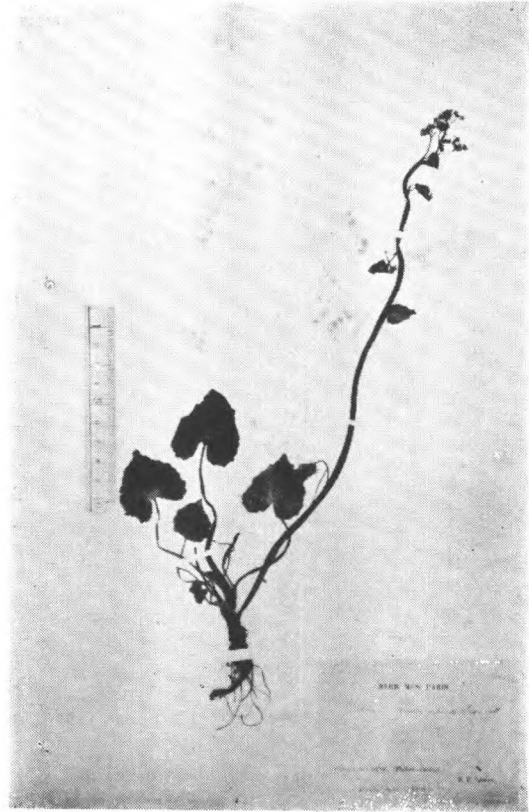


*Erysimum macilentum* Bge.  
 Potanin (1881) 河北

山 嵒 草 屬 *Eutrema* R. Br.

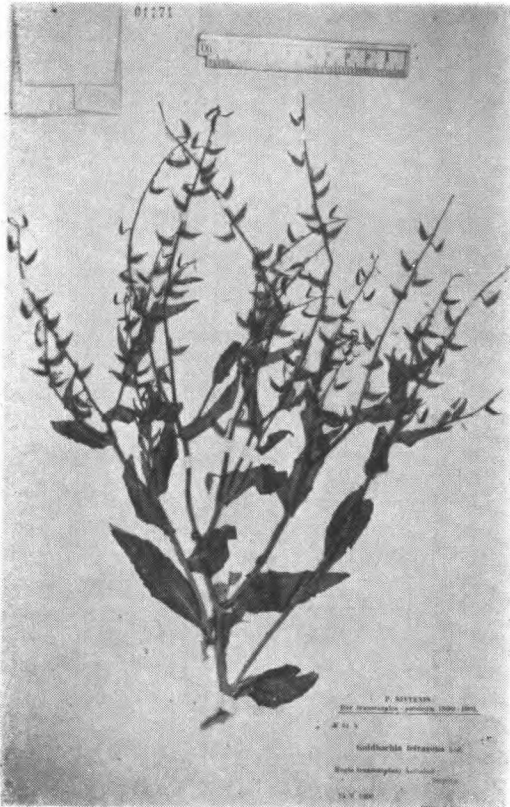


*Eutrema lancifolium* (Fr.) O. E. Schulz  
Soulie, Thibet Oriental.



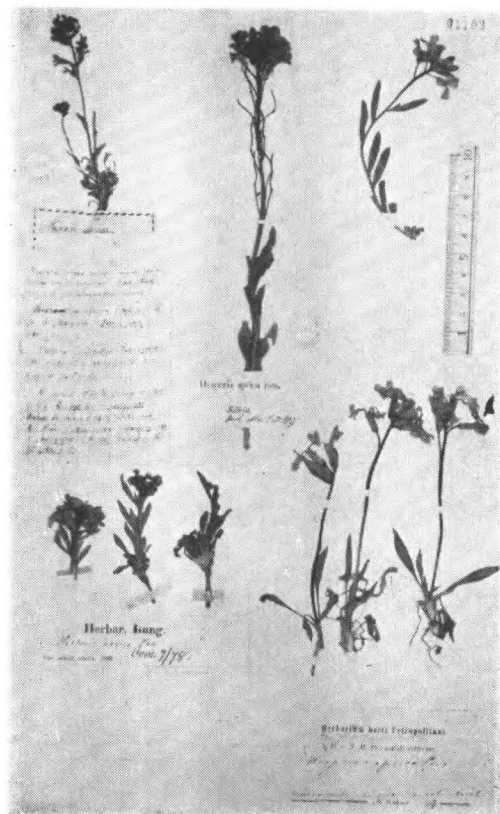
*Eutrema yunnanense* Fr.  
Wilson (Veitch) 3202 四川

春 果 屬 *Goldbachia* DC.



*Goldbachia laevigata* (Marsh-Bieb.) DC.  
Pl. Sintensis 61 b. Regio transcaespica,

香 花 草 屬 *Hesperis* L.



*Hesperis aprica* (Steph.) Poir.  
Przewalski 蒙古西部, 天山

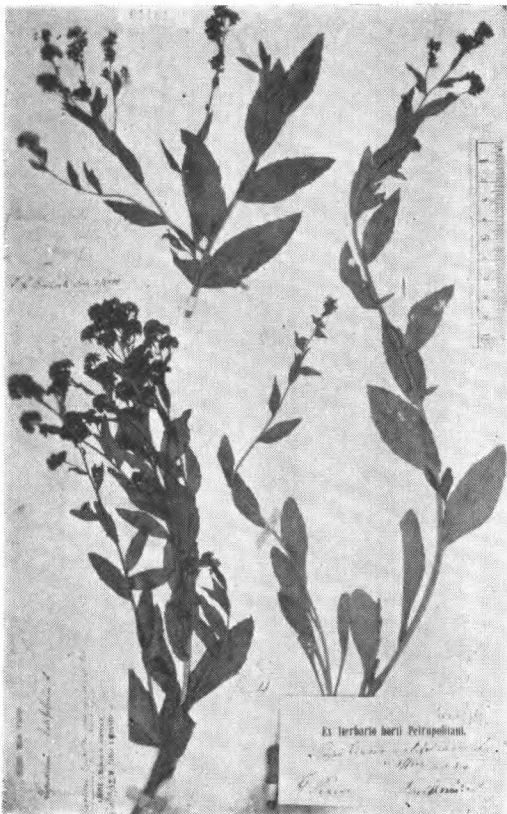


*Hesperis matronalis* Radde  
Baical 西伯利亚



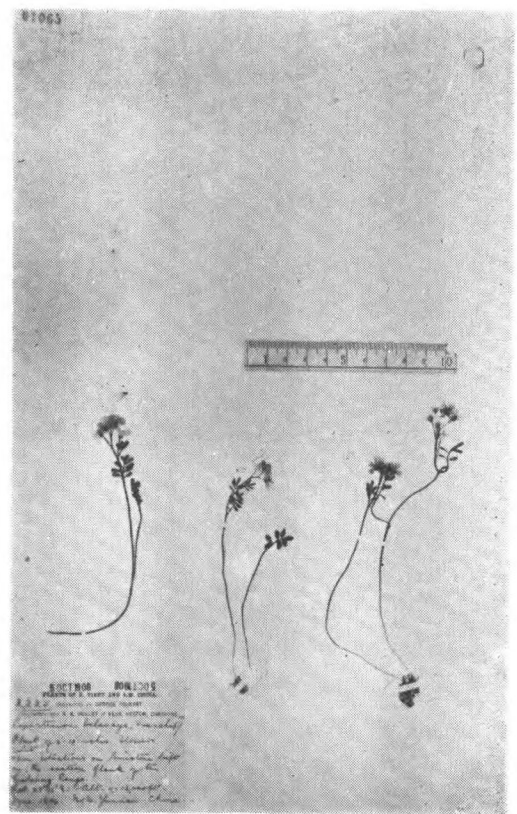
*Hesperis trichosepala* Turcz.  
Przewalski. 蒙古南部

独行菜属 *Lepidium* L.



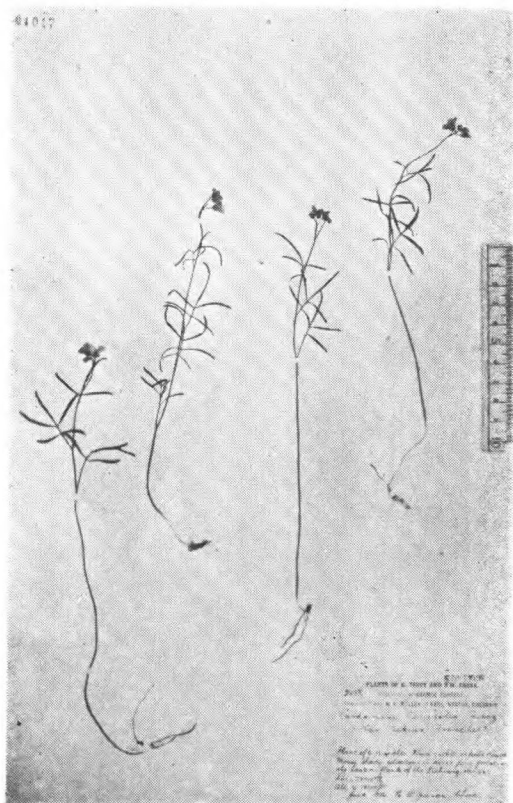
*Lepidium latifolium* L.  
Bretschneider, David, Bullock. 北京

弯蕊属 *Loxostemon* Hk. f. et Thoms.

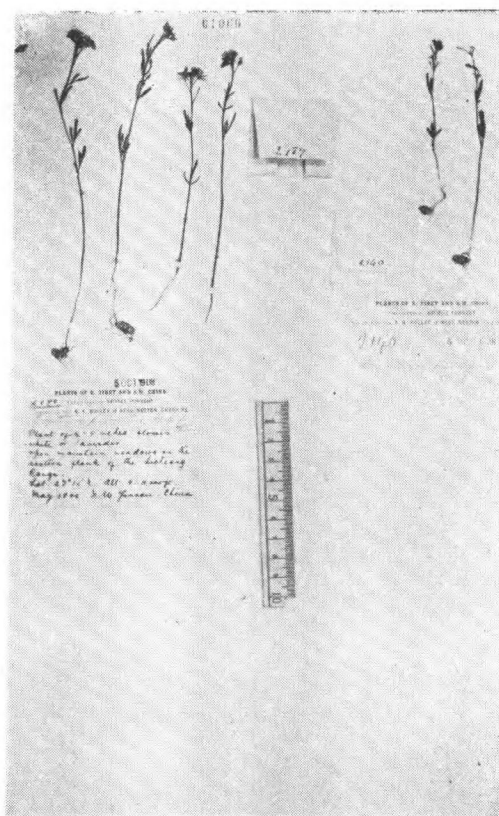


*Loxostemon Delavayi* Fr.  
Forrest 2225 (type.) 云南丽江



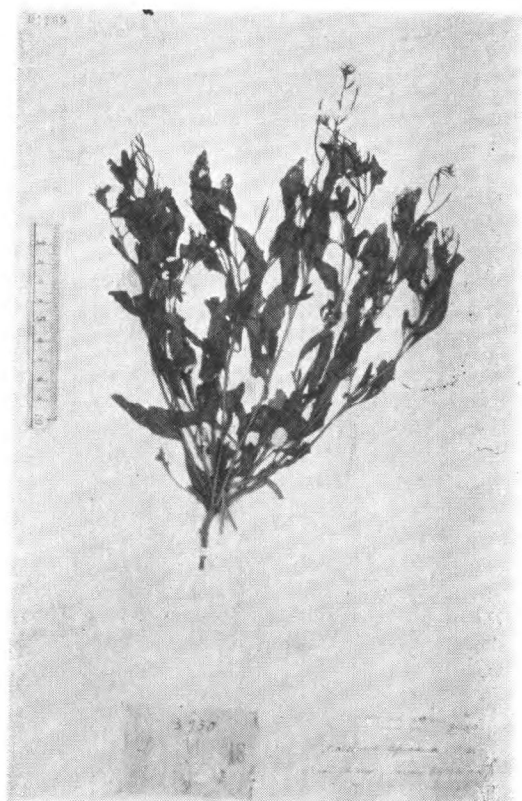


*Loxostemon nepens* (Fr.) H.-M.  
Forrest 2258. 云南丽江

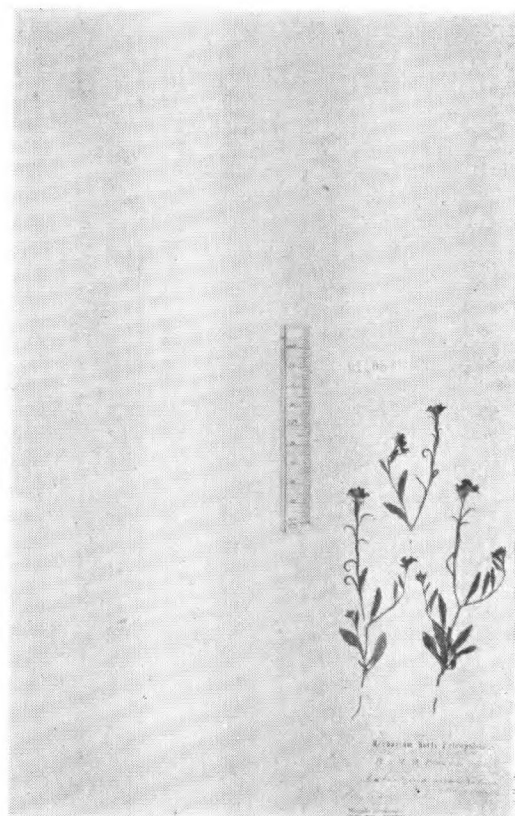


*Loxostemon pulchellum* Hk. f. et Thoms.  
Forrest 2140. 云南丽江

*Malcolmia* R. Br.



*Malcolmia africana* (L.) R. Br.  
Licent 3950 甘肃北部



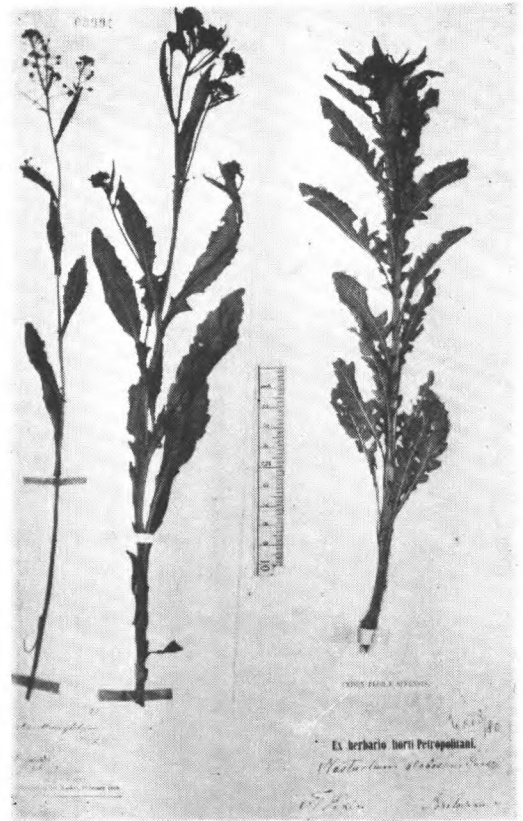
*Malcolmia mongolica* Maxim.  
Prezwalski 蒙古戈壁

*Megadenia Maxim.*

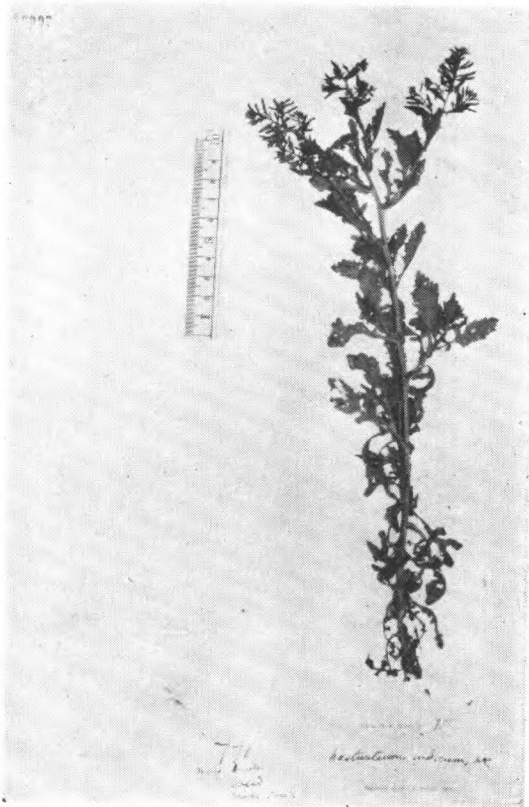


*Megadenia pygmaea Maxim.*  
Przewalski 黄河上游

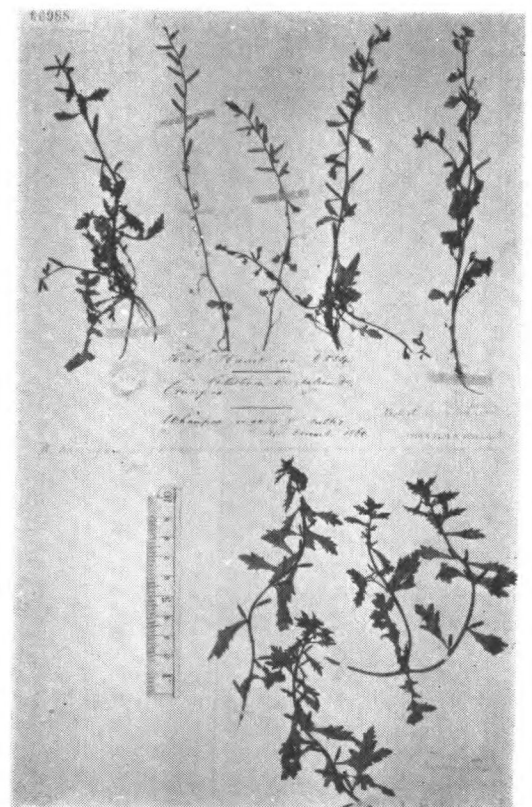
*Nasturtium R. Br.*



*Nasturtium globosum Turcz.*  
Bretschneider 北京



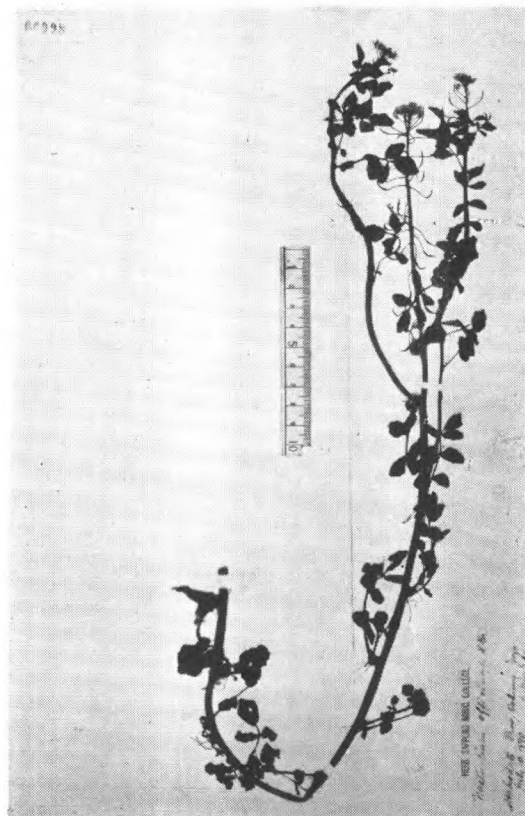
*Nasturtium indicum (L.) DC.*  
Morse 771. 广西龙州



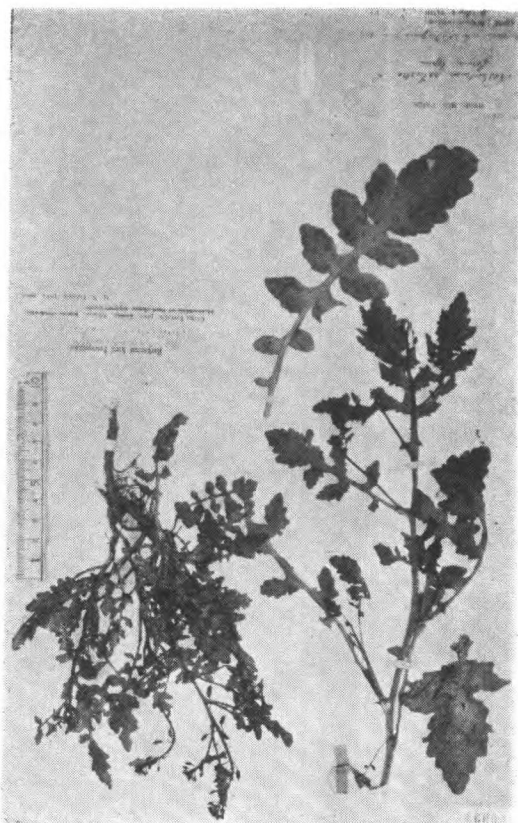
*Nasturtium microspermum DC.*  
Hance 6554. 广东黄浦



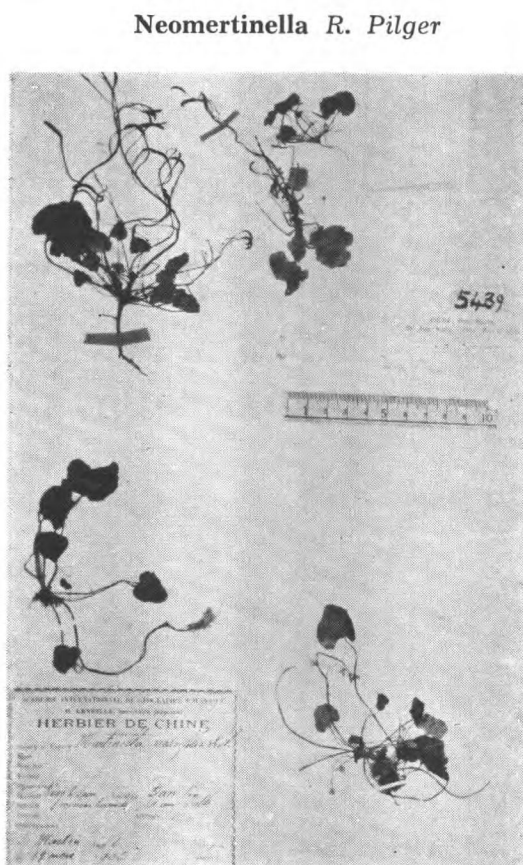
*Nasturtium montanum* Wall.  
Oldham 44. 浙江宁波



*Nasturtium officinale* R. Br.  
Miyabe. 日本



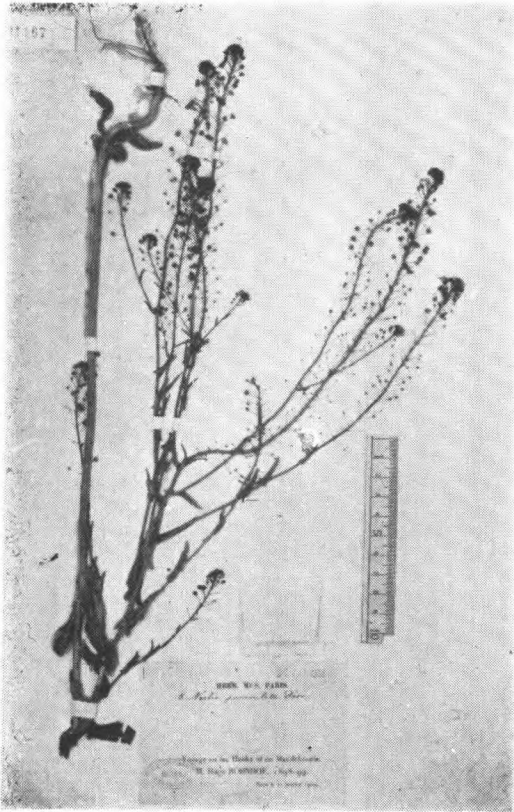
*Nasturtium palustre* (Leysser) DC.  
David 2706. (typica) 蒙东, Potansn 山西



*Neomartinella violaefolia* (H. Lévl.) Pilger  
Henry 5439. 湖北, Martin 贵州

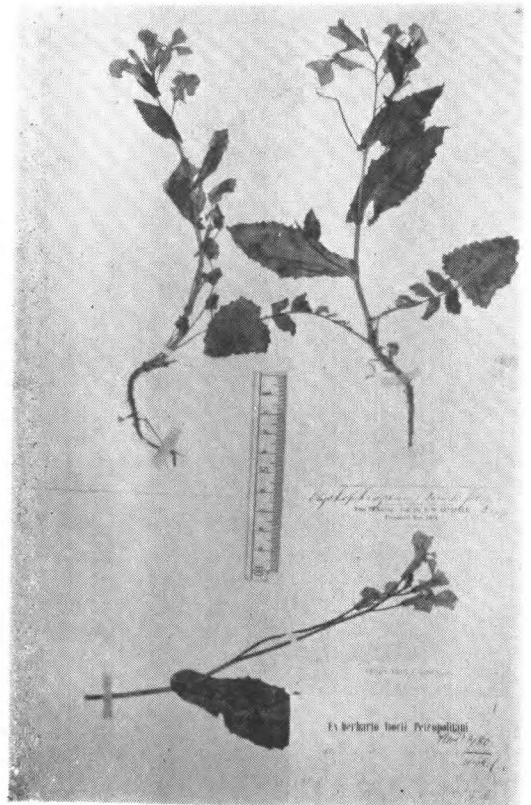


Neslia Desv.



*Neslia paniculata* (L.) Desv.  
Bohnhof 吉林东部, 兴凯湖

諸葛菜屬 *Orychopragmus* Bunge



*Orychopragmus violaceus* (L.) O. E. Schulz  
S. W. Bushell, Bretschneider 百花山

巴料草屬 *Parrya* R. Br.

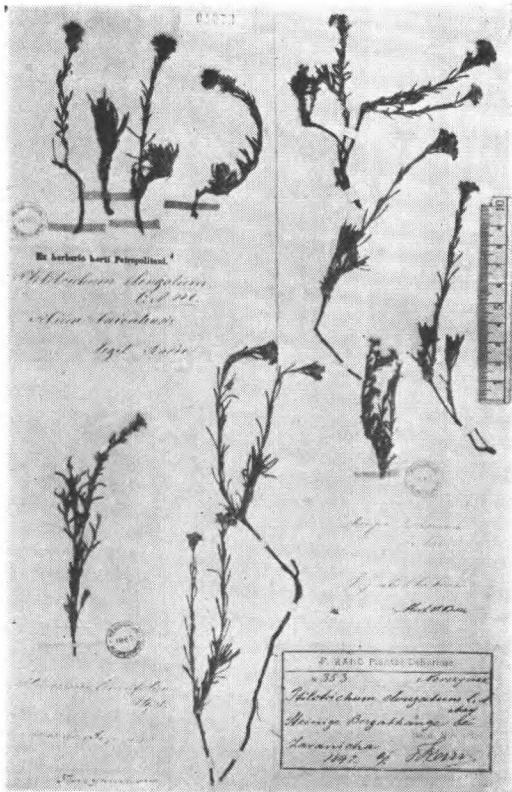


*Parrya ericalyx* Regel et Schmalh.  
R. E. Appleton. 天山

无茎草屬 *Pegaeophyton* Hayek et H.-M.



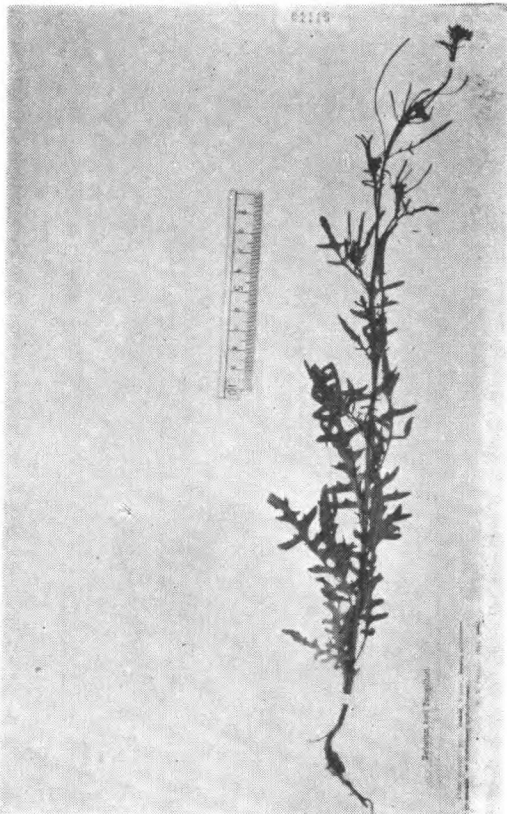
*Pegaeophyton sinense* (Hemsl.) Hayek et H.-M.  
Wils. (Veitch) 3194 四川

*Ptilotrichum* C. A. Meyer

*Ptilotrichum cretaceum* (Adams) Ledebour  
Karo. 353. 貝加尔, Radde  
Siberia, David 2917 热河

蘿蔔屬 *Raphanus* (Tourn.) L.

*Raphanus sativas* L.  
Oldham 119. 日本

大蒜芥屬 *Sisymbrium* L.

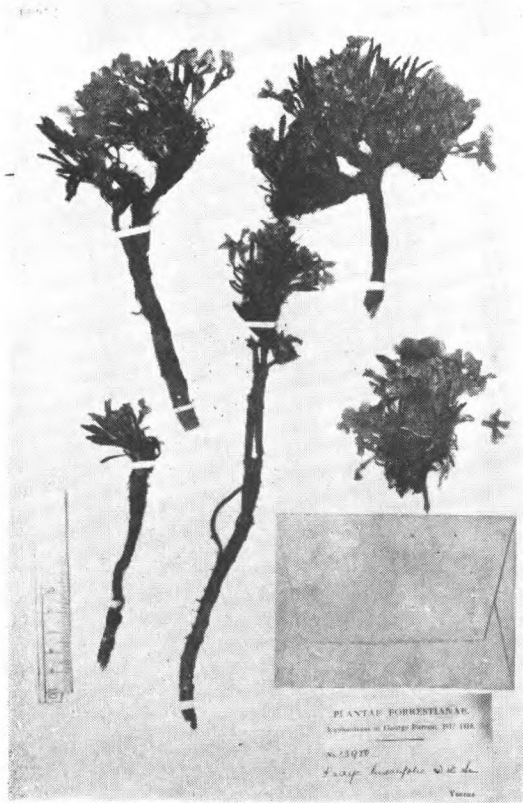
*Sisymbrium heteromalum* C. A. Meyer  
Potanin (1884) 山西



*Sisymbrium luteum* (Maxim.)  
O. E. Schulz  
Wilson. 云南



丛菴屬 *Solms-Laubachia* Muschler



*Solms-Laubachia linearifolia* Musch.  
Forrest 13980 云南西北

菴莫屬 *Thlaspi* L.

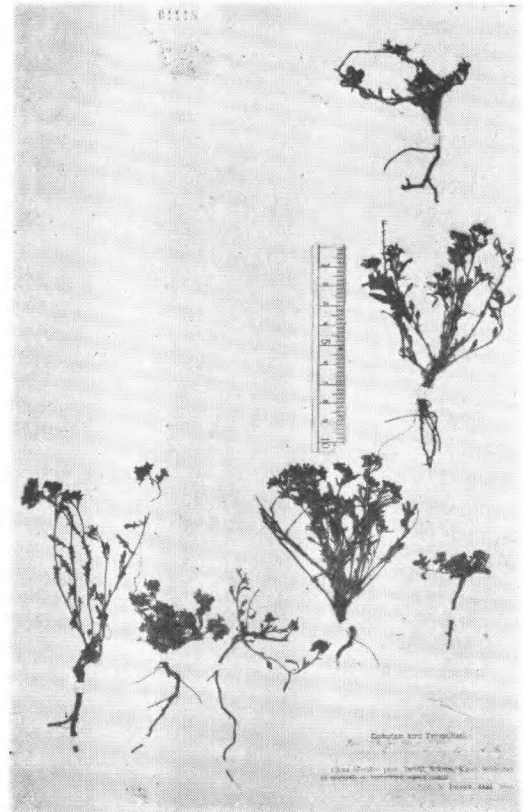


*Thlaspi arvense* L.  
Ducloux 3234. 云南昆明

扭果屬 *Torularia* (Cosson) O.E. Schulz.



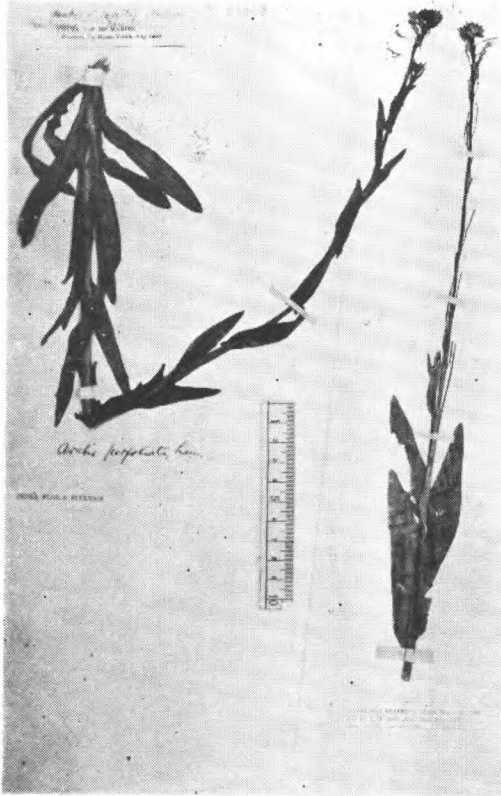
*Thlaspi yunnanensis* Fr.  
Delavay 云南燕子崖



*Torularia humilis*  
G. N. Potanin 甘肃西部

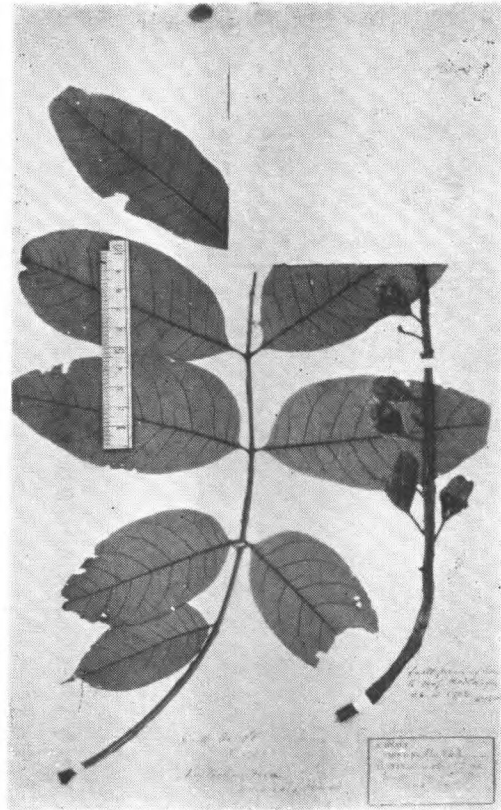


*Turritis L.*



*Turritis ylabra L.*  
James 东北, Maries 江苏

61. 伯乐樹科  
*Bretschneideraceae*  
伯乐樹屬 *Bretschneidera Hemsl.*



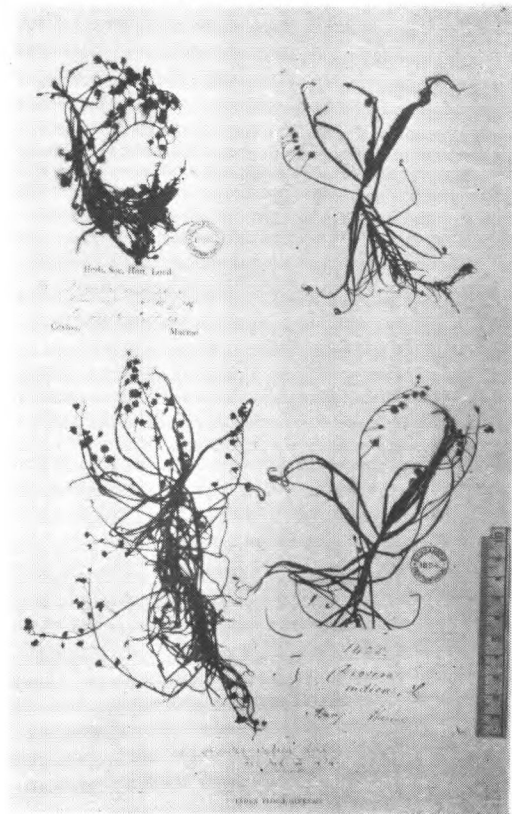
*Bretschneidera sinensis Hemsl.*  
Henry 10540 (type.) 云南蒙自东南山

62. 猪籠草科 *Nepenthaceae*  
猪籠草屬 *Nepenthes L.*



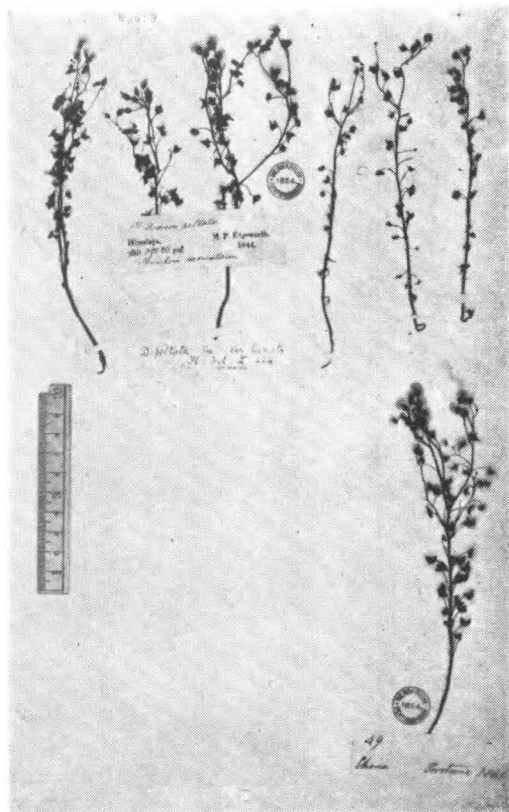
*Nepenthes mirabilis (Lour.) Merr.*  
海南

63. 茅膏菜科 *Droseraceae*  
茅膏菜屬 *Drosera L.*

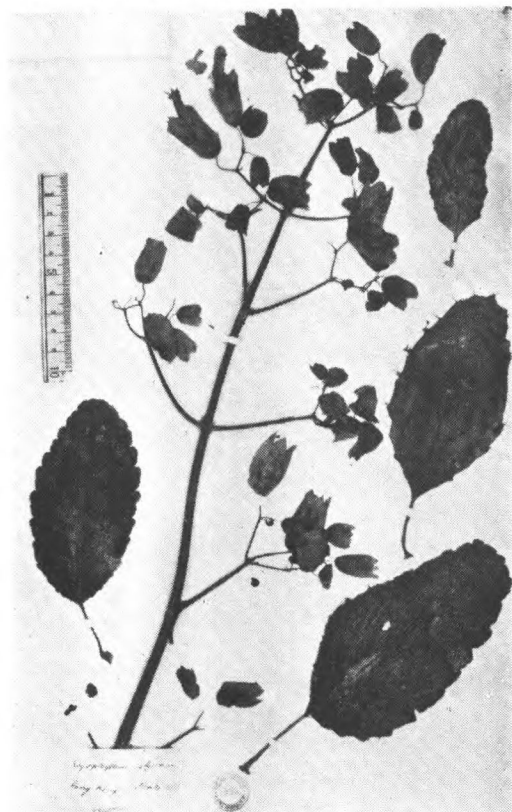


*Drosera indica L.*  
Hance 1425 福建廈門, Macrae 116 錫兰

6、景天科 *Crassulaceae*  
落地生根屬 *Bryophyllum* *Salisb.*

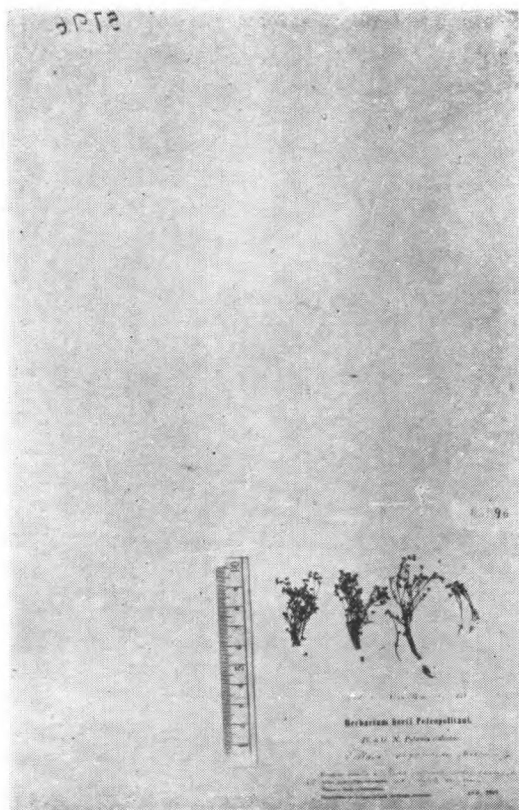


*Drosera peltata* *Smith*  
Fortune 49 中国, Edgeworth 喜馬拉雅



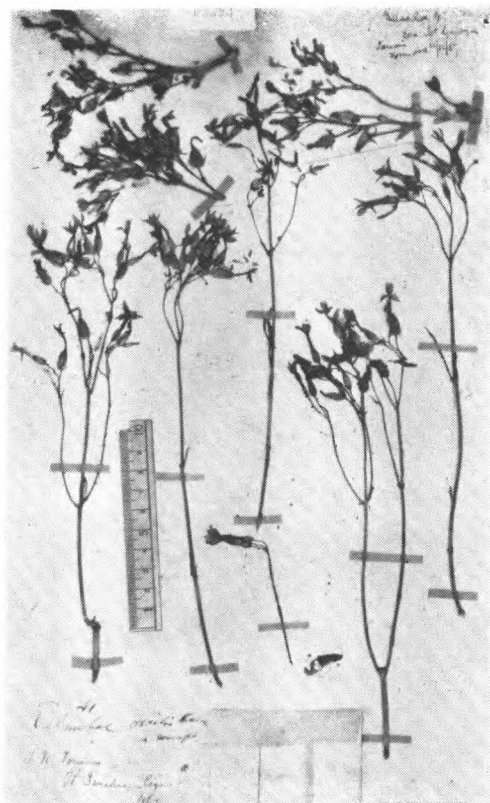
*Bryophyllum pinnatum* (Lam.) S. Kurz  
Hinds 184 香港

青鎖龍屬 *Crassula* *L.*

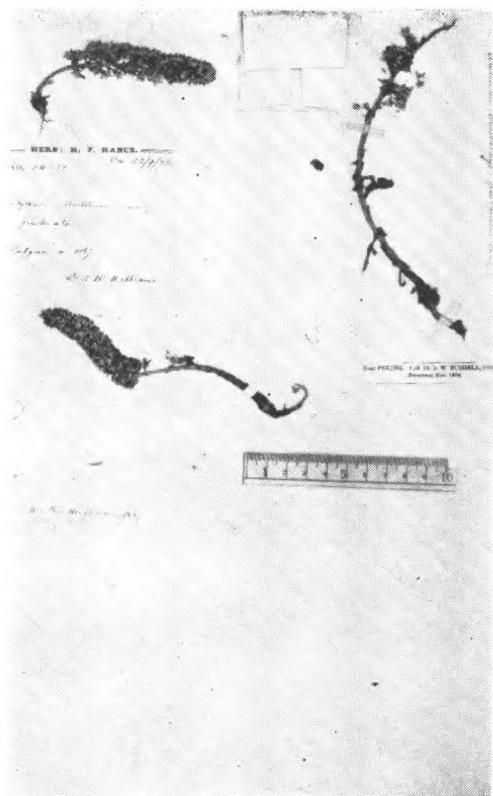


*Crassula aquatica* (L.) *Schonl.?*  
Potanin 蒙古西阿尔泰南

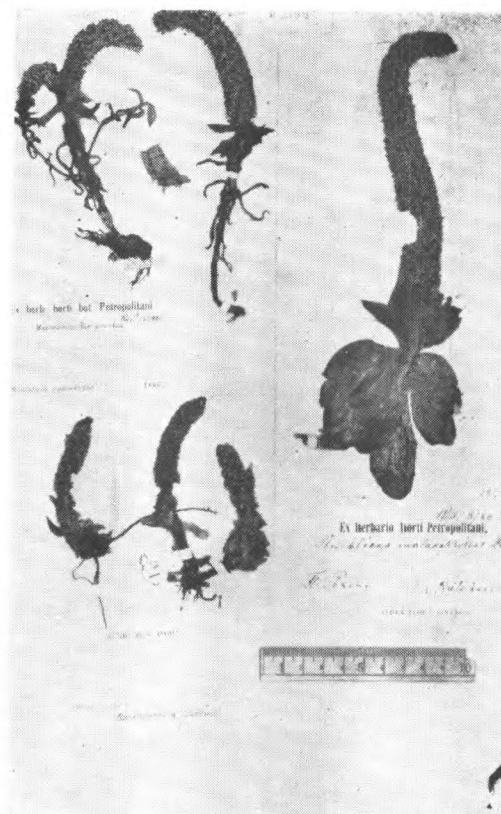
高涼菜屬 *Kalanchoe* *Adanson*



*Kalanchoe spathulata* (Poir.) *DC.*  
Swinhoe (1862) 台湾 (西南部)

瓦松屬 *Orostachys*

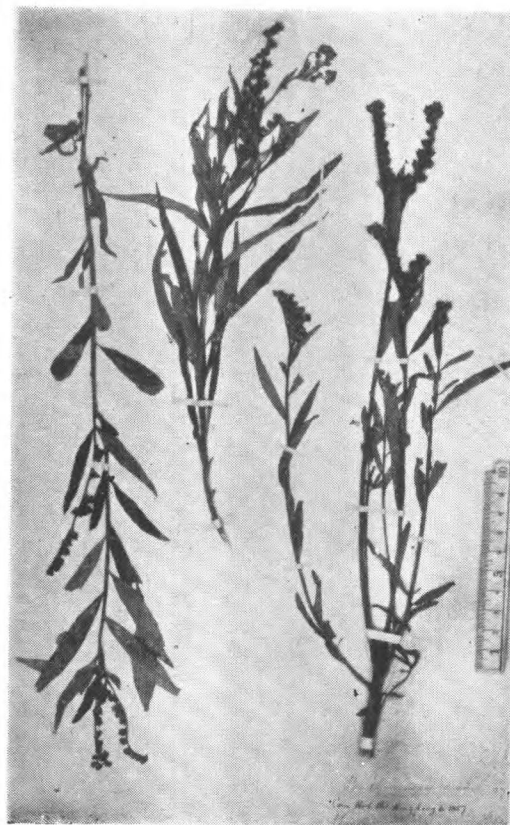
*Orostachys fimbriatus* (Turcz.) Berger  
Hance 14551 (张家口), Bushell 北京,  
Faber 上海



*Orostachys malacophyllus* Fisch.  
Bretschneider 294 北京,  
Maximowicz 东北, Faurie 5154 日本

扯根菜屬 *Penthorum* L.

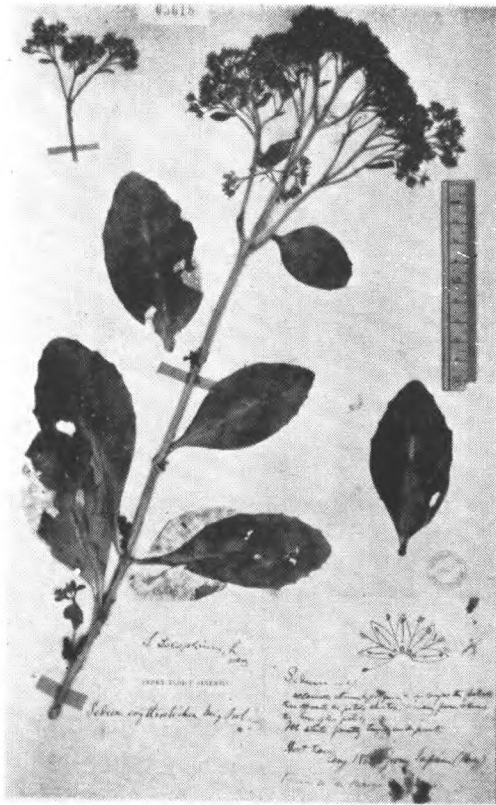
*Penthorum chinensis* Pursh  
Herb, Hance 13773.



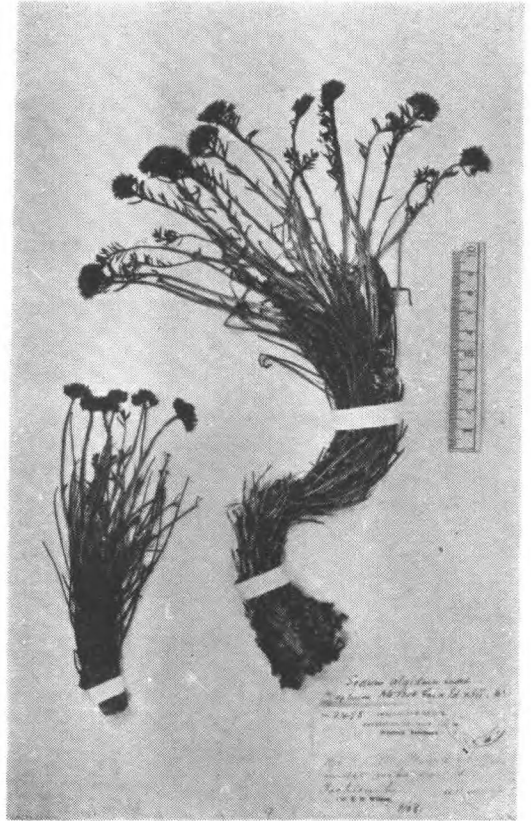
*Penthorum sedoides* Linn.



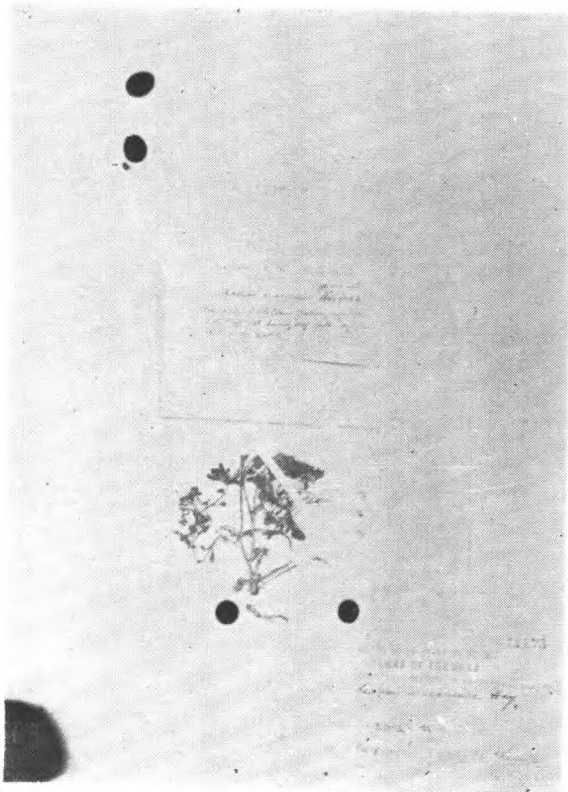
景天屬 *Sedum* L.



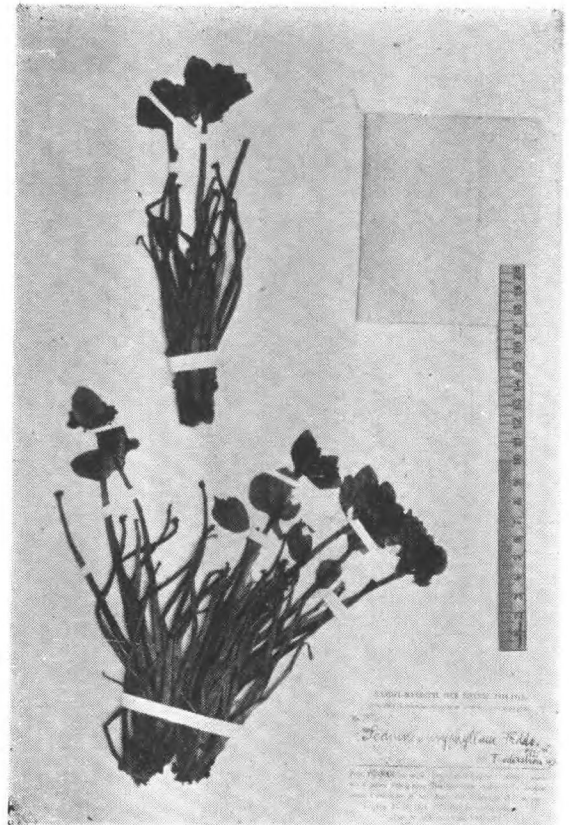
*Sedum alboroseum* Baker  
Kew Garden (type) 日本



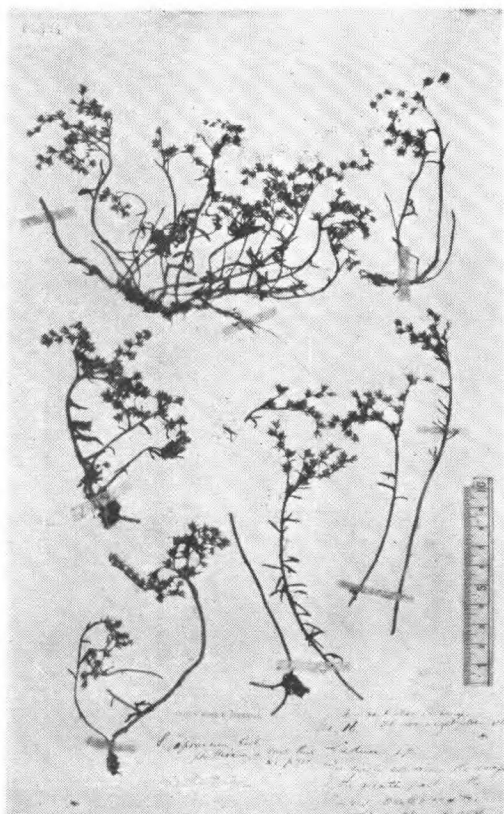
*Sedum algidum* Ledeb.  
Wils. 2498 打箭炉



*Sedum arisanensis* Yamamoto  
U. Faurie 无号 (Merotype.) 台湾南部阿里山 (阿玉山)



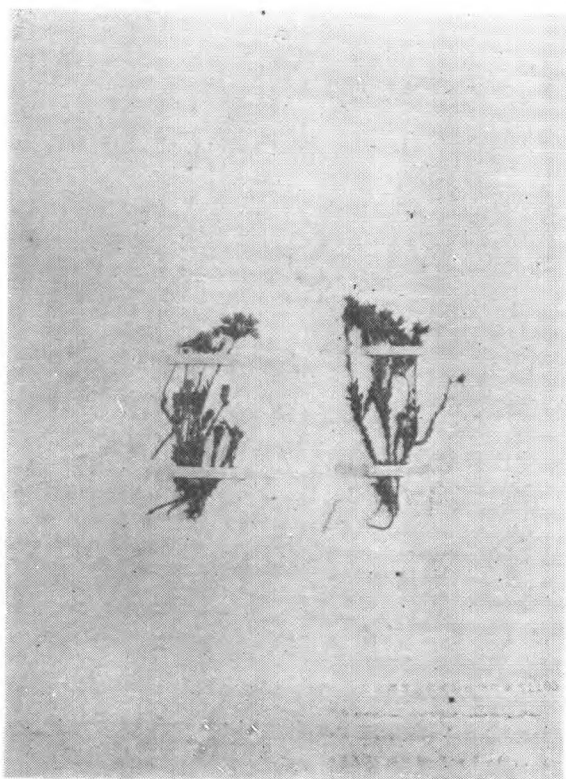
*Sedum euryphyllum* Froderstr.  
H.-M. 3322 type. 云南 (丽江五龙山)



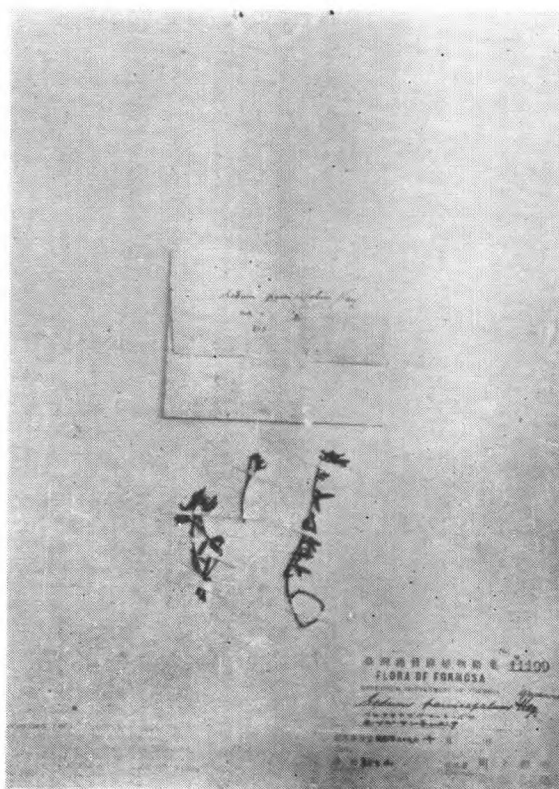
*Sedum japonicum* Sieb.  
Oldham 16 浙江(乍浦)



*Sedum juparense* Frod.  
Rock 14365 (type.) 西藏

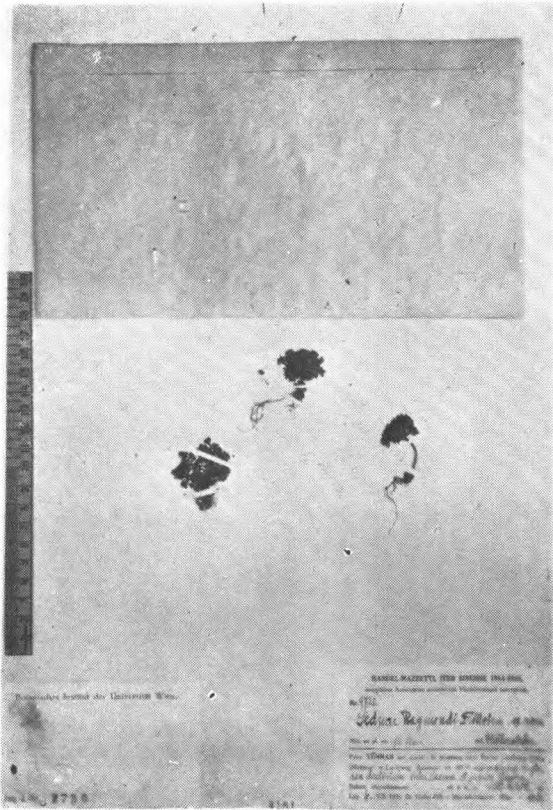


*Sedum morrisonense* Hay.  
T. Kawakami et U. Mori 2281, (isosyntype.)  
台湾摩利嵩山

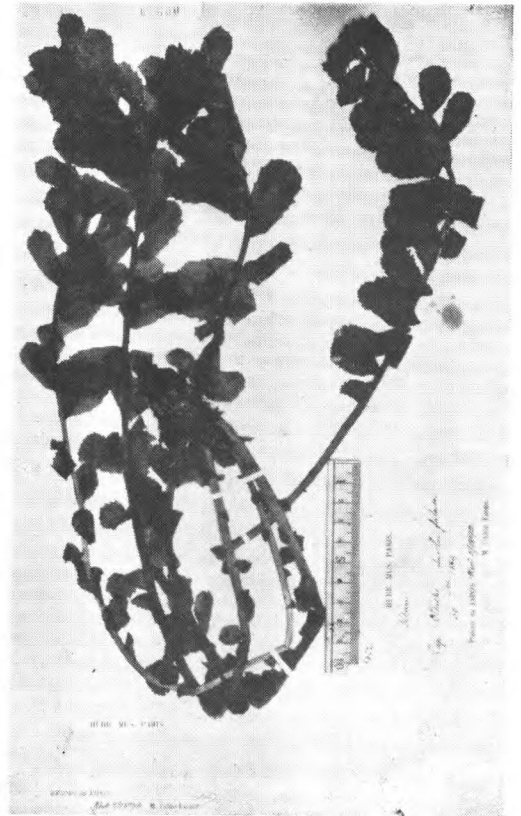


*Sedum parvisepalum* Yamamoto  
T. Kawakami et U. Mori 无号(merotype.)  
台湾 in mont. Niitaka

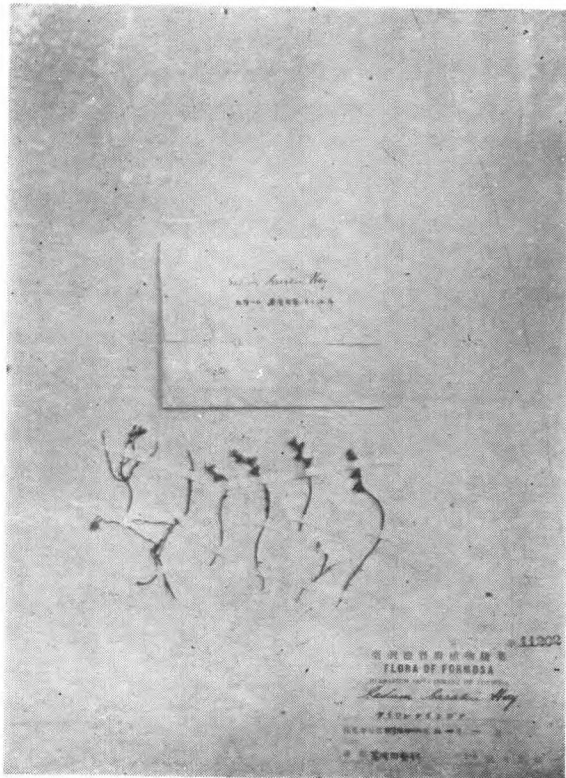




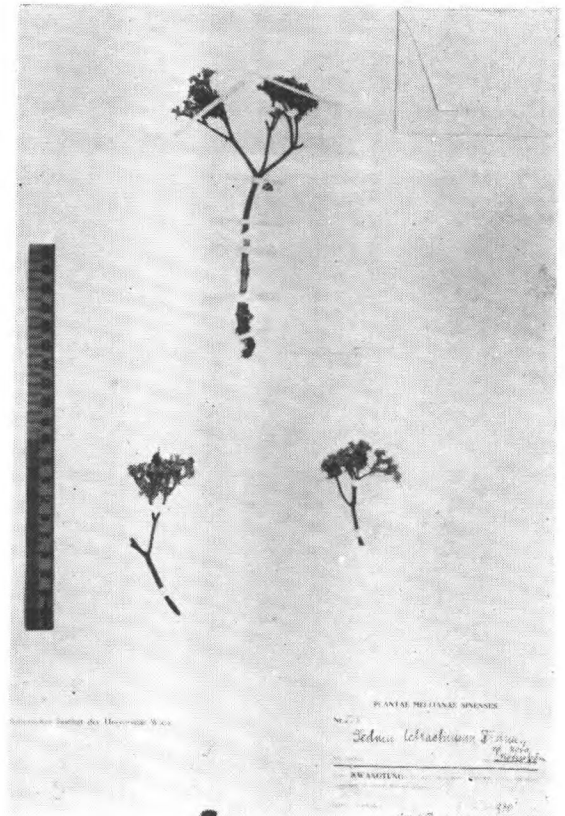
*Sedum Raymondii* Fröderstr.  
H.-M. 9720 (type.) 云南澜沧江. 怒江



*Sedum roseum* Scop.  
Faurie 5010, 5032. 日本

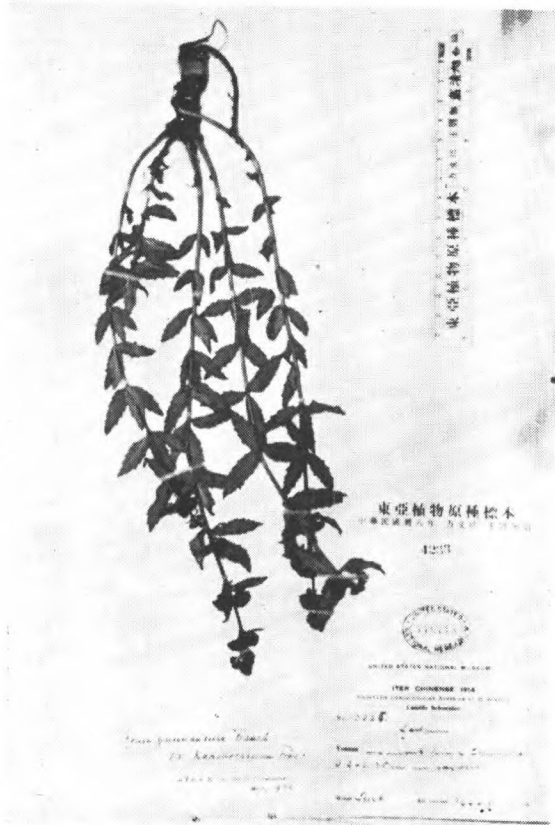


*Sedum Sasakii* Hay.  
S. Sasaki 无号 (merotype.)  
Litore Denryoyo-sha et Shinsha, 台湾



*Sedum tetraactinum* Fröderstr.  
Rud. Mell 535 (type.) 广东

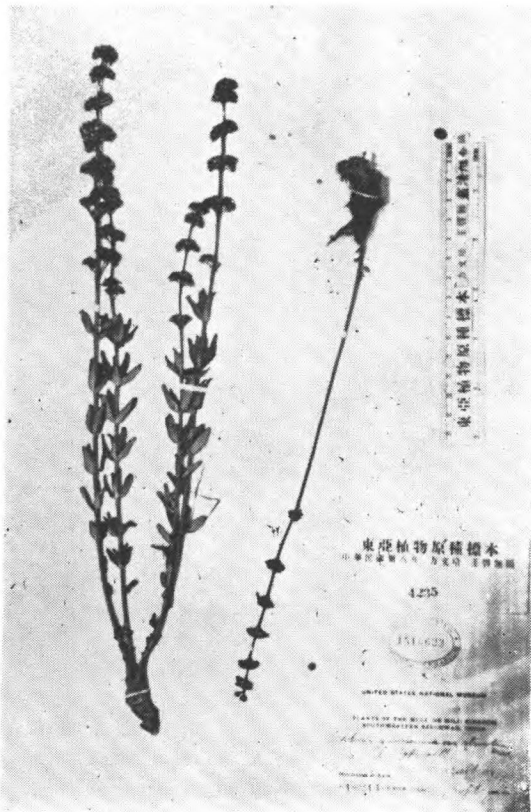




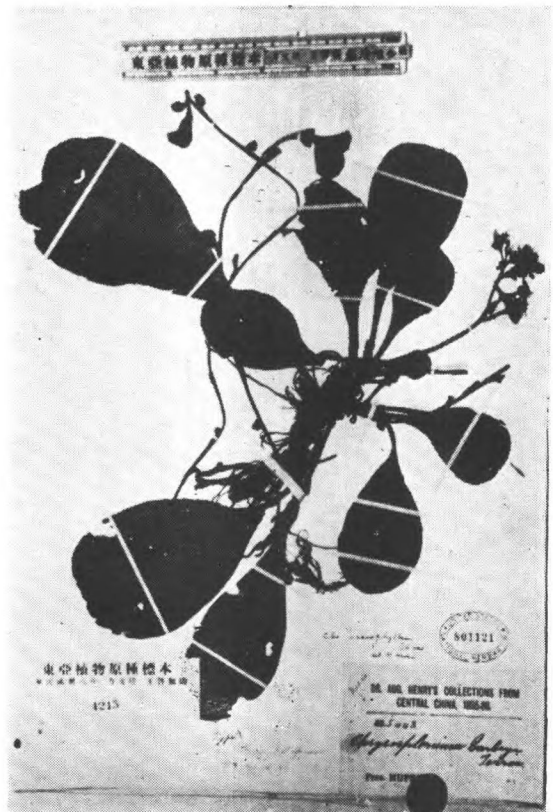
*Sedum yunnanense* Fr. var. *rotundifolium* Froderstr.  
Rock 10517 (cotype?) 云南



*Sedum yunnanense* Fr. var. *papillocarpum* Froderstr.  
Schneider 3025 (type) 云南



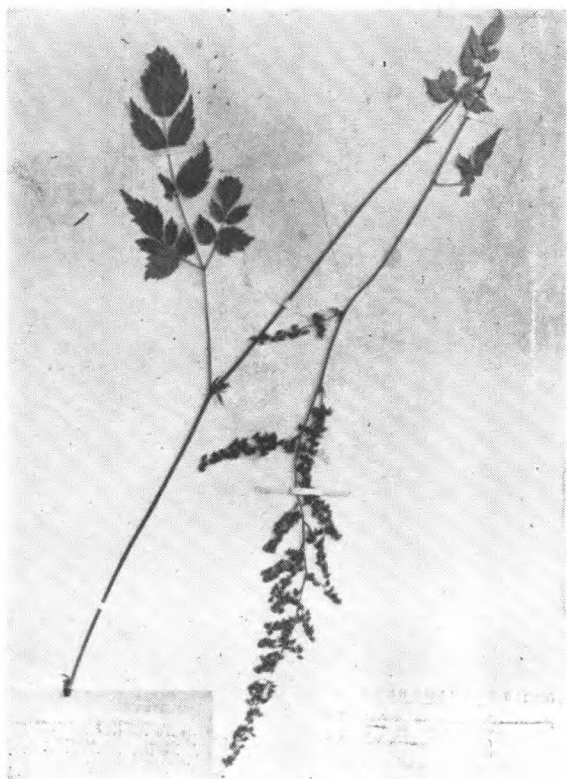
*Sedum yunnanense* Fr. var. *strictum* Froderstr.  
Rock 18214 (cotype.) 云南



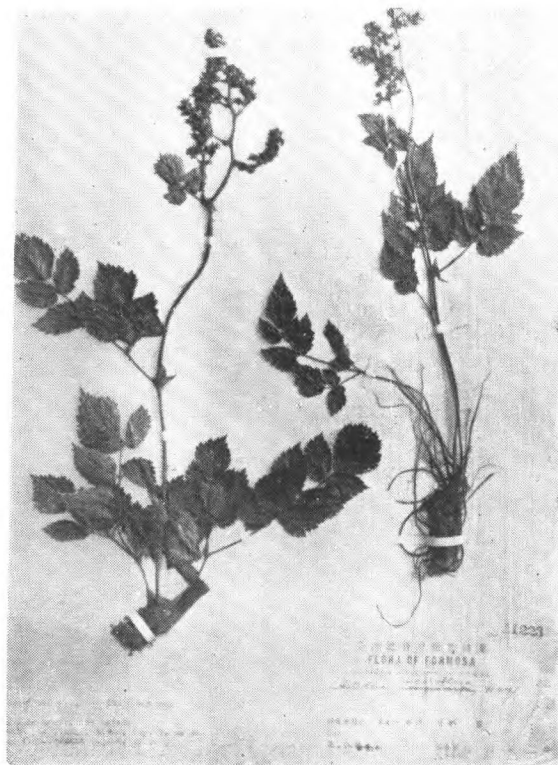
*Chrysosplenium macrophyllum* Oliver  
Henry 5443 (cotype?) 湖北

65. 虎耳草科 Saxifragaceae

落新妇屬 *Astilbe* Buch.-Ham.

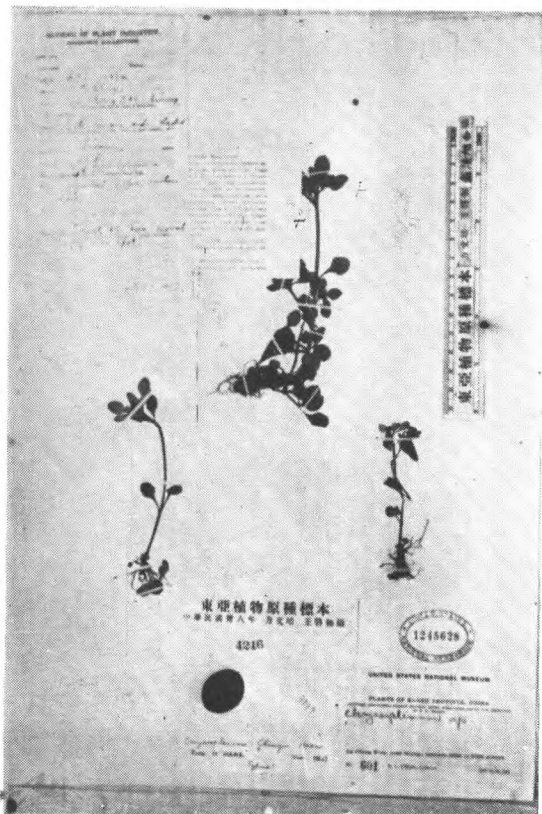


*Astilbe longicarpa* (Hay.) Hay.  
T. Kawakami et U. Mori 1990,  
(iso-syntype.) 台湾摩利崙山

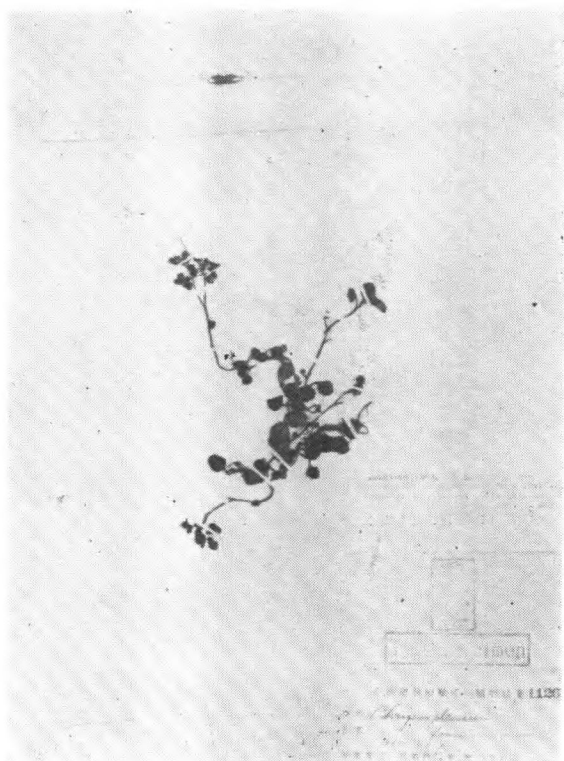


*Astilbe macroflora* Itay.  
Matsuda 无号, 台湾熊高山

猫眼草屬 *Chrysosplenium* L.



*Chrysosplenium Chingii* Hara  
Ching 601 (type.) 甘肃

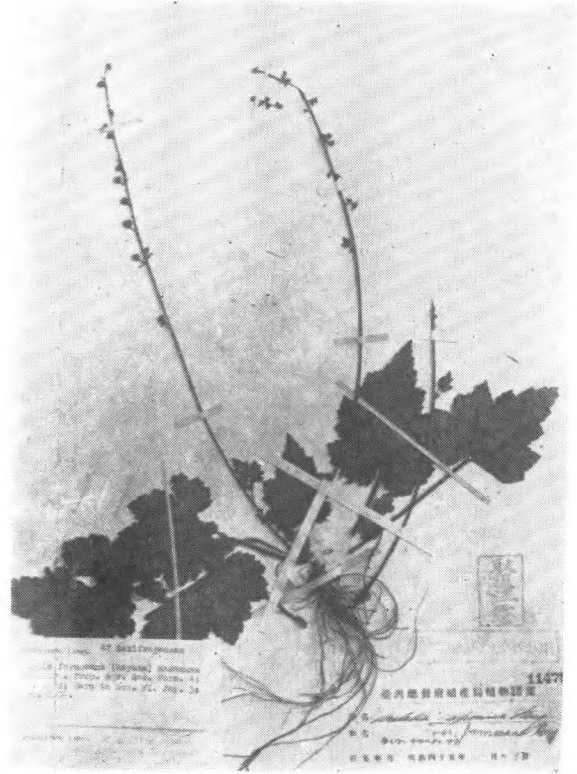
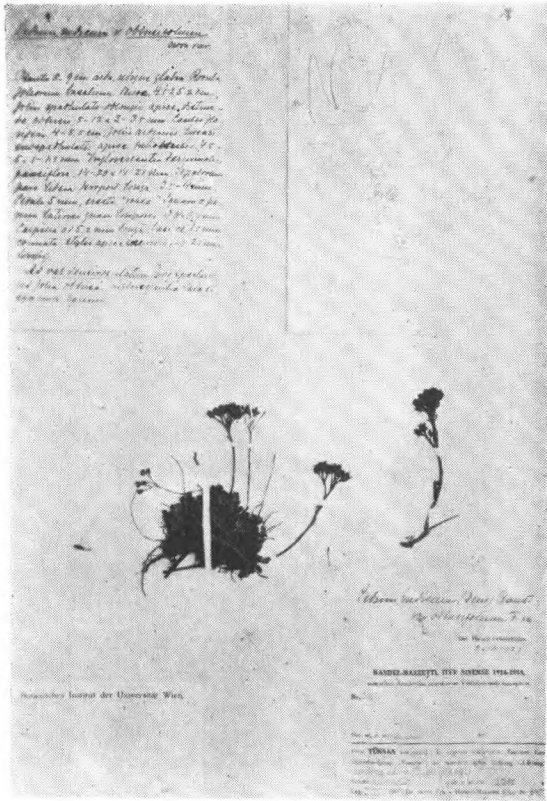


*Chrysosplenium formosanum* Hay.  
U. Mori 无号 (isotype.)  
台湾 Montibus centralibus.



*Sinocrassula* Berger.

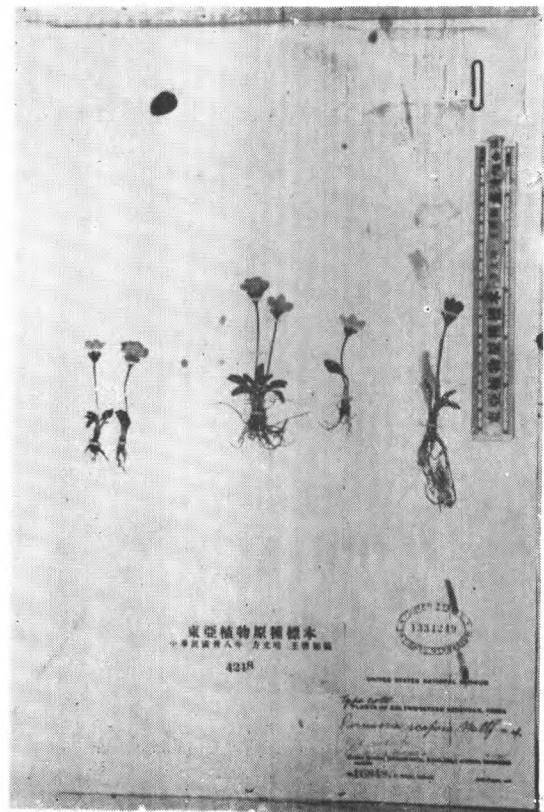
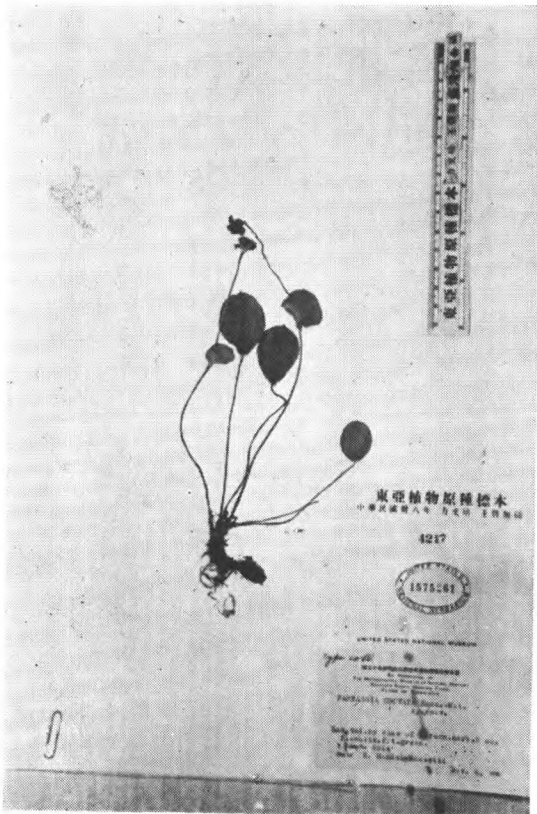
噴 吶 草 屬 *Mitella* L.



*Sinocrassula indica* (Decne.) Berger var.  
*obtusifolium* Froderstr.  
H.-M. 3417 (type.) 云南丽江

*Mitella formosana* (Hayata) Masamune  
B. Hay. et S. Sasaki 无号 (isotype)  
台湾阿里山

梅 花 草 屬 *Parnassia* L.

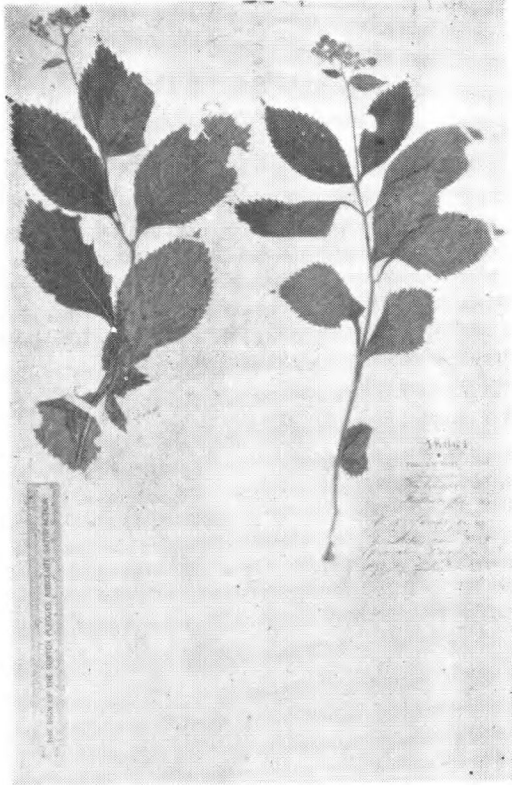


*Parnassia scaposa* Mattf.  
Rock 16848 (cotype.) 四川西南

*Parnassia obovata* H.-M.  
Tsiang 9544 (cotype.) 貴州

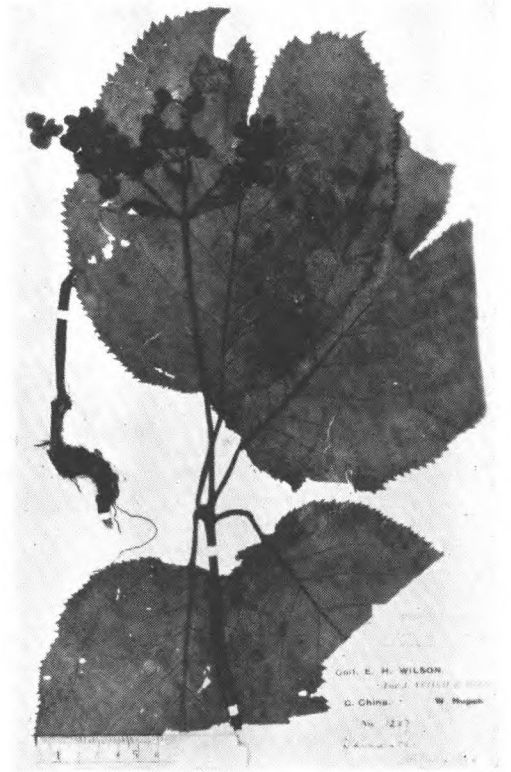


草繡球屬 *Cardiandra* Sieb. et Zucc.



*Cardiandra Moellendorffii* (Hance) Li.  
(type) 江西

銀梅草屬 *Deinanthe* Maxim.

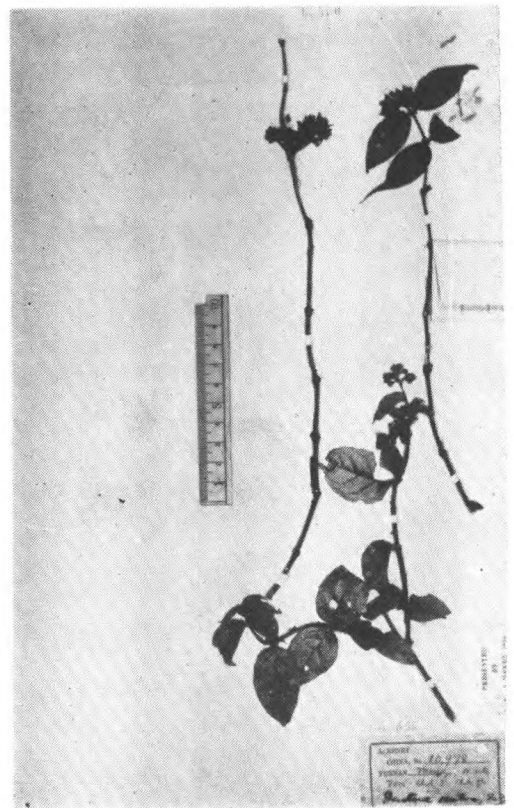


*Deinanthe coerulea* Stapf  
Wils. 1207 湖北西部

溲疏屬 *Deutzia* Thunb.



*Deutzia aspera* Rehd.  
Henry 9475 (type) 云南紅河南



*Deutzia crassifolia* Rehd.  
Henry 10978, (type.) 云南蒙自



*Deutzia discolor* Hemsl.  
Henry 3766, 4053 (syntype.) 湖北巴东



*Deutzia discolor* Hemsl. var.  
*purpurascens* Fr.

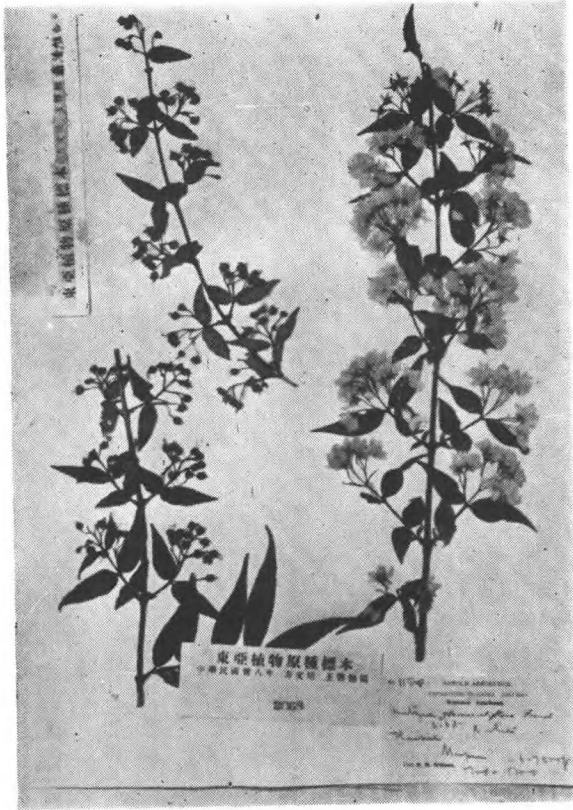


*Deutzia glabrata* Komarov  
Wils. 10489, 朝鮮



*Deutzia glauca* W. C. Cheng  
Ching 2657 (type). 安徽





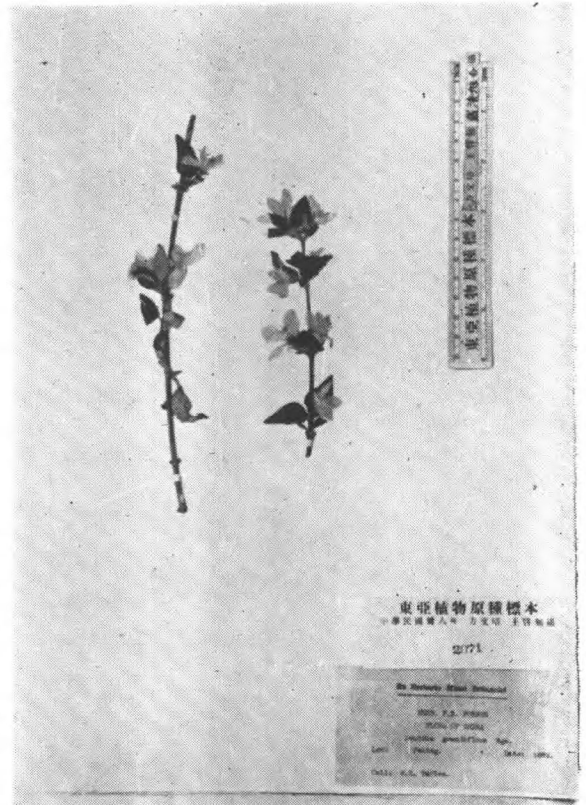
*Deutzia glomeruliflora* Franch.  
Wils. 1188 四川穆坪



*Deutzia gracilis* Sieb. et Zucc.  
Wils. 无号 日本



*Deutzia grandiflora* Bunge  
Purdom 16. 中国



*Deutzia grandiflora* Bunge var.  
*Baroniana* Rehd.  
W. R. Carles 无号 北京





*Deutzia Henryi* Rehd.  
Henry 11786 (type). 云南思茅



*Deutzia hypoglauca* Rehd.  
Wils. 1919A (type.) 湖北



*Deutzia kelungensis* Hay.  
Wils. 10204 台灣



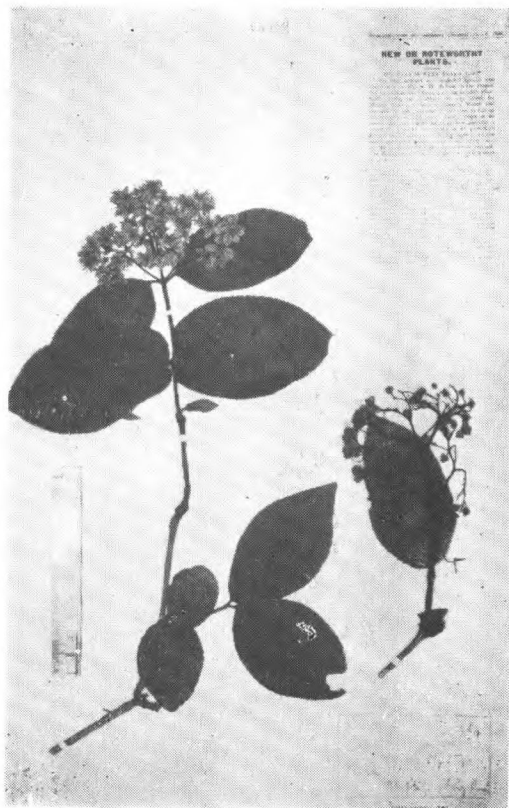
*Deutzia kongoa* Airy-Shaw  
Wilson 10431 (isotype) 朝鮮



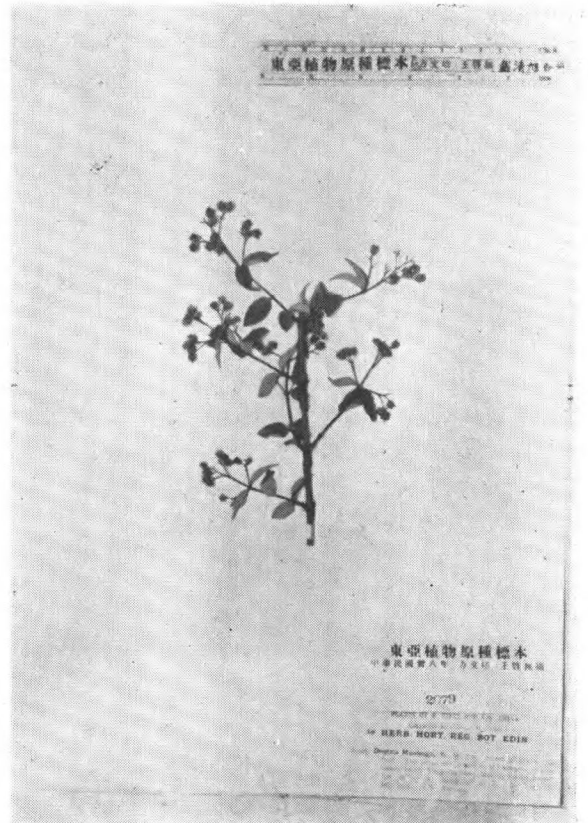
*Deutzia longifolia* Fr.  
Wils. 1340 四川巫山



*Deutzia longifolia* Franch.  
Wils. 4326 四川灌縣



*Deutzia mollis* Duthie  
Wils. (Veitch) 1959 (type.) 湖北



*Deutzia Mongbeigii* W. W. Sm.  
Forr. 20148 云南





*Deutzia nagroi* Makino  
Shiota 13202.



*Deutzia ningpoensis* Rehd.  
E. Faber 1709 (type.) 浙江宁波



*Deutzia pilosa* Rehd.  
Wils. 2896 (type.) 四川灌县



*Deutzia prunifolia* Rehd.  
Jack 无号 (type) 朝鮮

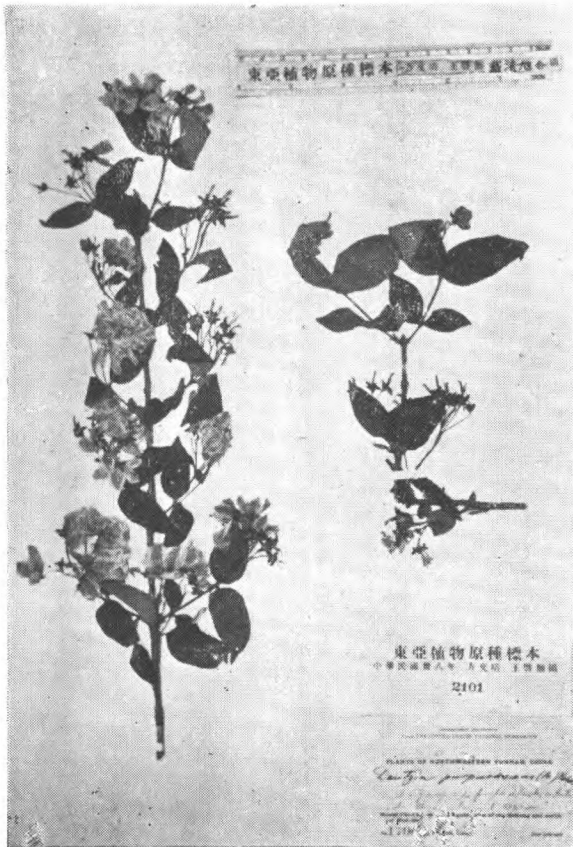




*Deutzia pulchra* Vidal  
Wils. 10126 朝鮮



*Deutzia pulchra* Vidal var.  
*formosana* Nakai  
G. Nakahara 无号 (iso-syn-type.)  
Tanashu-sha, Ako, 台湾



*Deutzia purpurascens* (Fr.) Rehd.  
Rock 17065. 云南



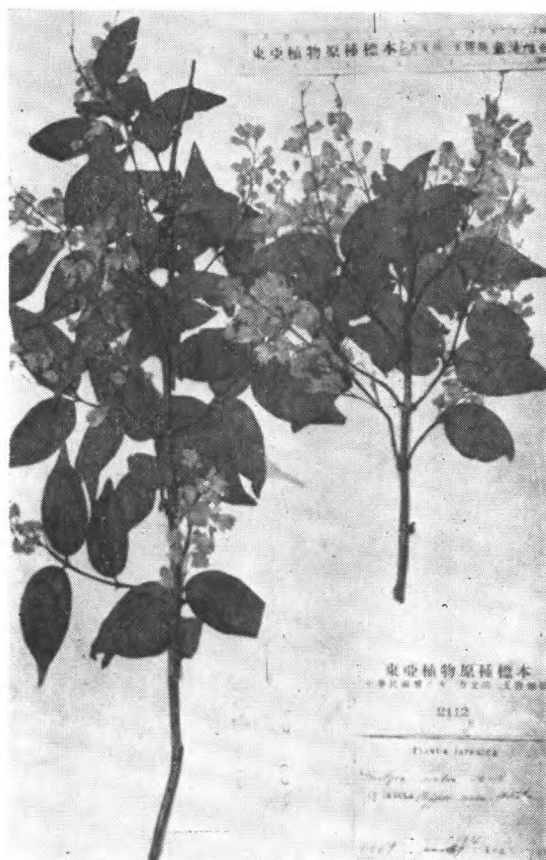
*Deutzia purpurascens* (Fr.) Rehd.  
var. *pauciflora*  
Rehd. Henry 9475A (type.) 云南



*Deutzia Rehderiana* Schneider  
Schneider 2613 (isotype) 云南



*Deutzia rubens* Rehd  
Wils. 2902 (type.) 四川灌县



*Deutzia scabra* Thunberg  
Faurie 6869 日本



*Deutzia Schneideriana* Rehd.  
Wils. 2889 fl. (type.) 湖北长乐





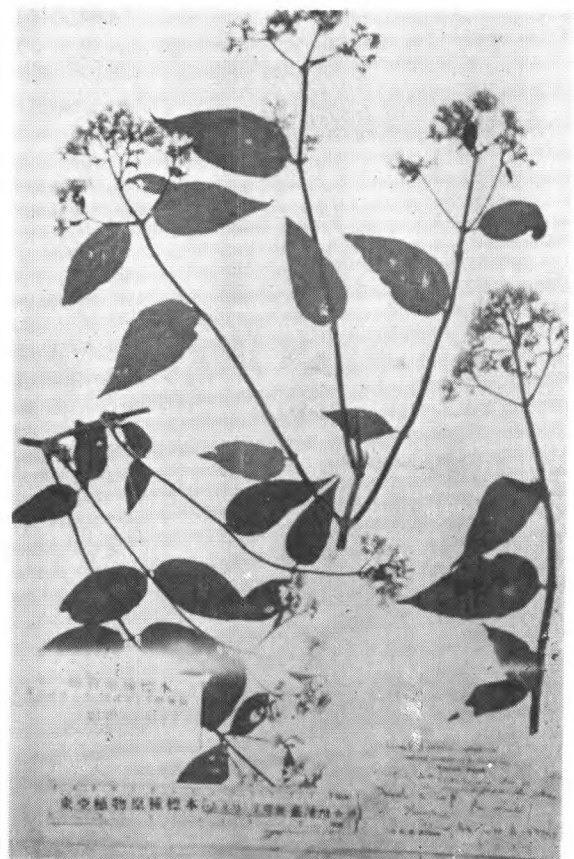
*Deutzia Schneideriana* Rehd. var.  
*laxiflora* Rehd.  
Wils. 767 (type.) 湖北



*Deutzia setchuenensis* Fr.  
Fang 2004 fr. 四川灌县



*Deutzia setchuenensis* Fr. var.  
*lengidentata* Rehd.  
Wils. 2895 (type.) 四川

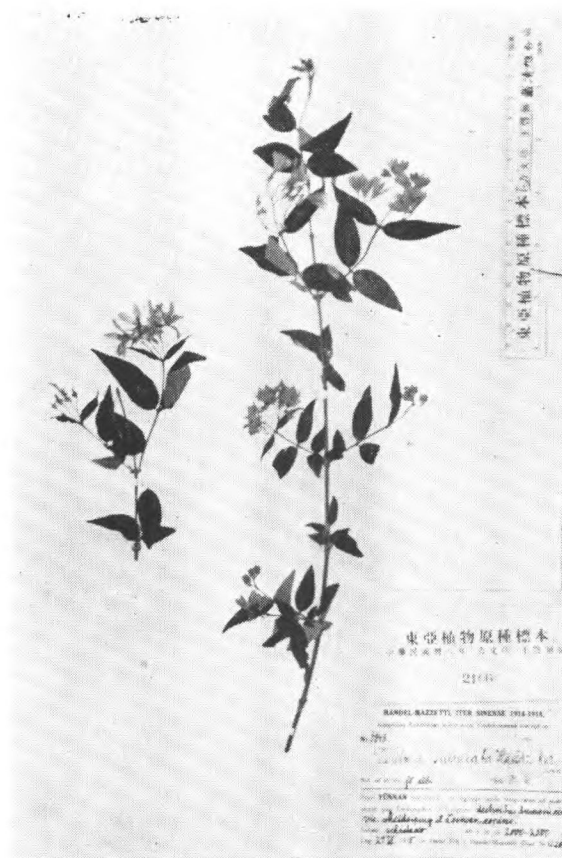


*Deutzia setchuenensis* Fr. var.  
*corymbiflora* Rehd.  
Wils. 4486 (type.) 湖北





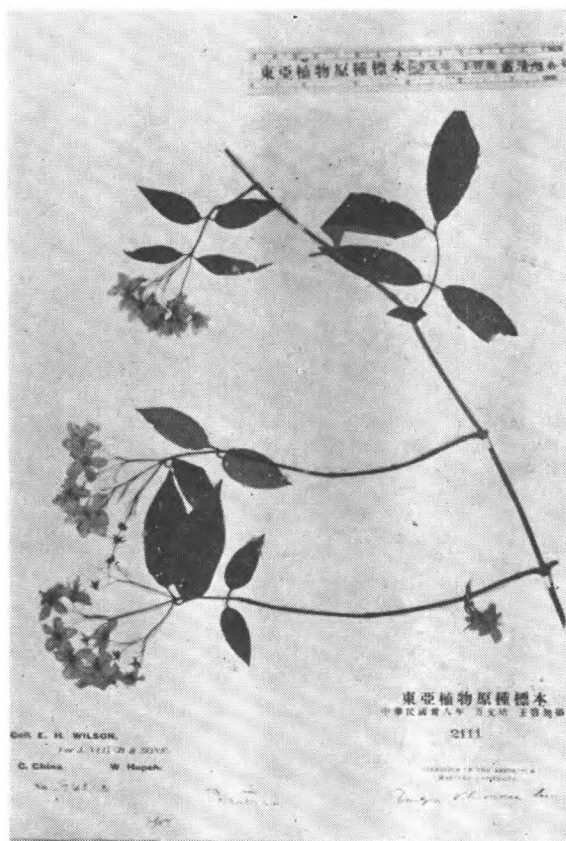
*Deutzia subsessilis* Rehd.  
Wils. 1188A (type.) 四川穆坪



*Deutzia subulata* H.-M.  
H.-M. 6846 (type.) 云南



*Deutzia taiwanensis* Schneider.  
Mori 224. 台湾



*Deutzia Vilmorinae* Lemoine  
Wilson 940 湖北

白常山屬 *Dichroa* Lour.

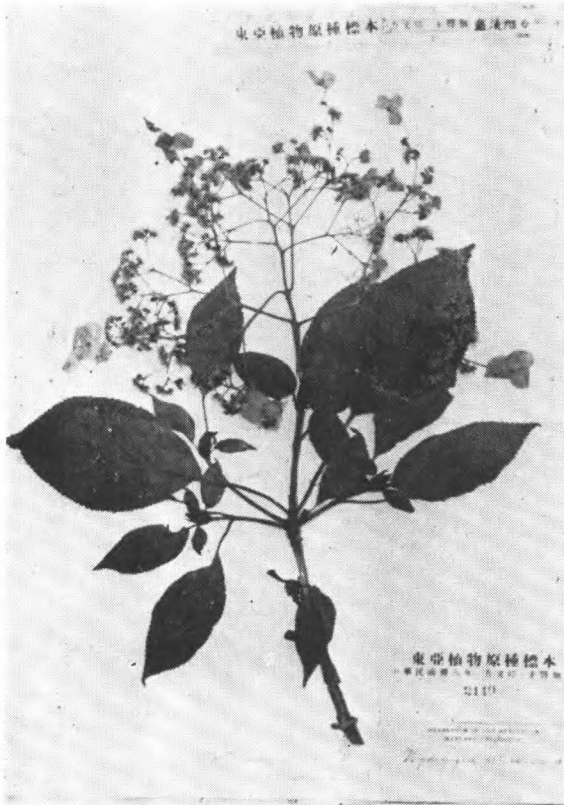


*Dichroa febrifuga* Loureiro  
Fang 1249 四川南川县

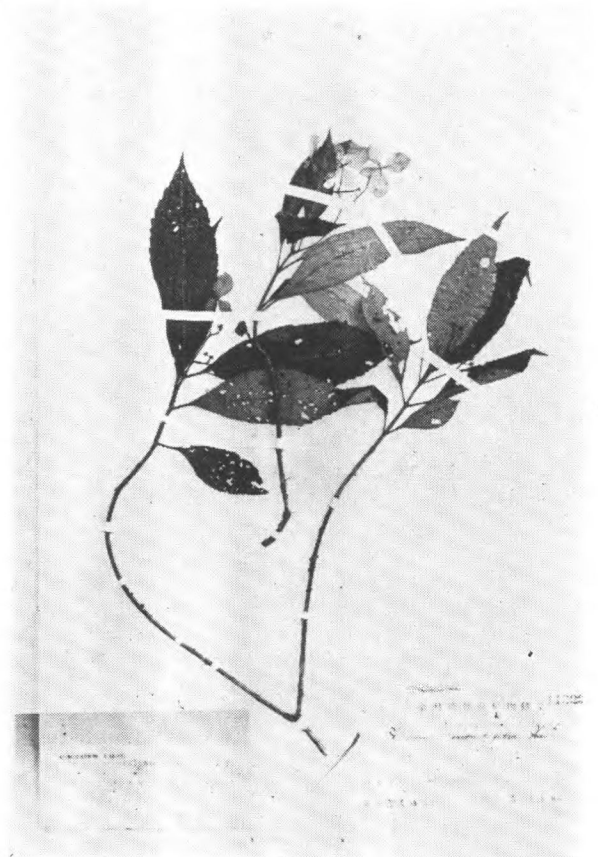


*Dichroa longifila* Merrill et Metcalf  
Lau 2397 (type) 广东

八仙花屬 *Hydrangea* L.



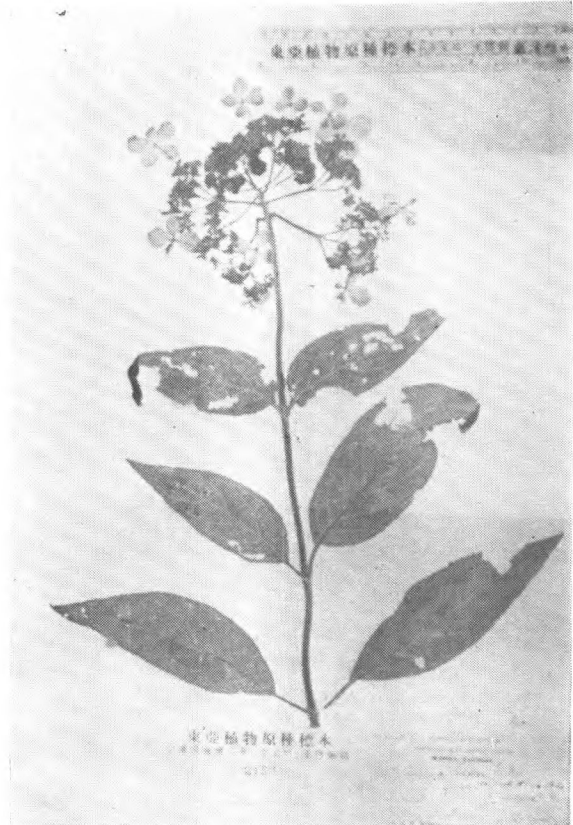
*Hydrangea altissima* Wallich  
Wils. 4901 四川峨眉



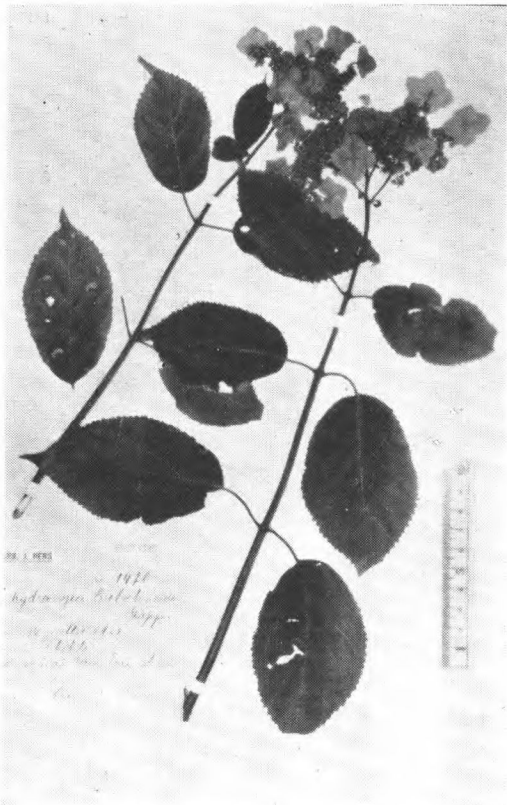
*Hydrangea angustipetala* Hay.  
T. Kawakami et U. Mori 无号  
(isotype), Giran, Churei, 台湾



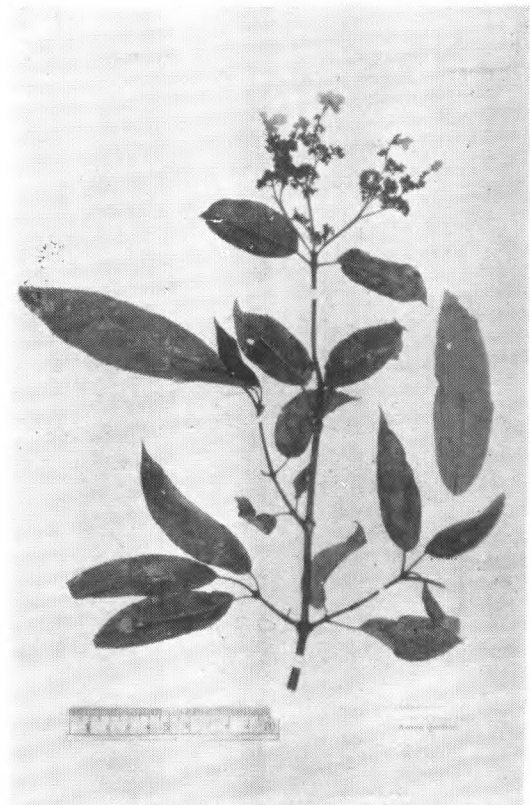
*Hydrangea anomala* D. Don.  
Wils. 491 湖北宜昌



*Hydrangea aspera* D. Don var. *velutina*  
Rehd.  
Wils. 2405 (type) 四川巫山



*Hydrangea Bretschneideri* Dippel  
Herb. J. Hers 1418 河北小五台山



*Hydrangea Bretschneideri* Dippel var. *lancifolia* Rehd.  
Wils. 2412 (type) 西康打箭炉

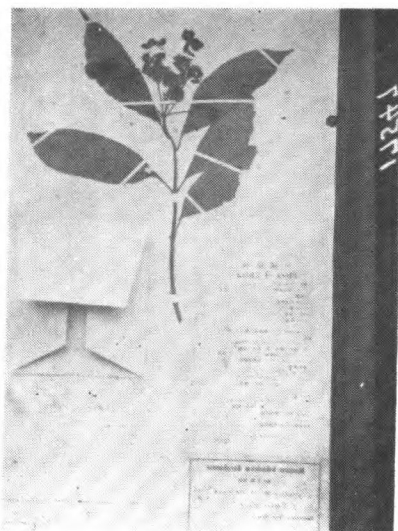




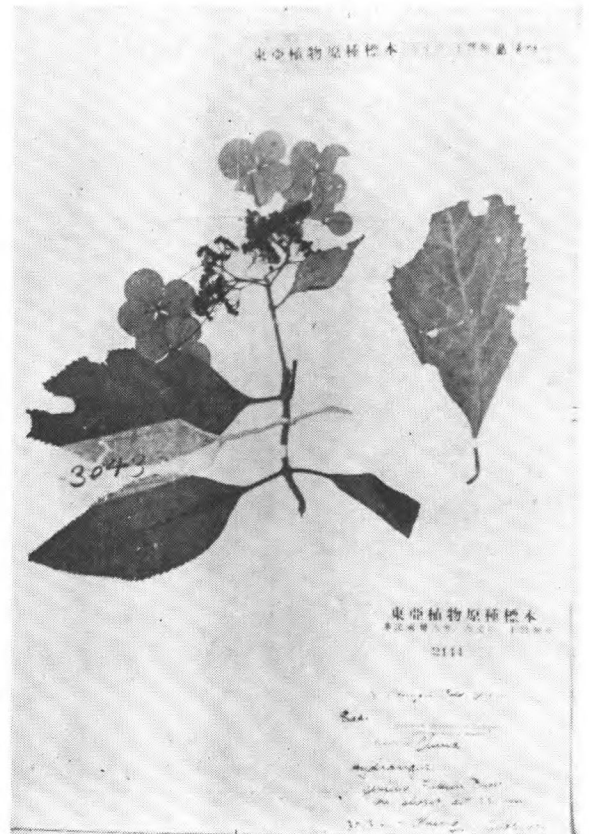
*Hydrangea Bretschneideri* var.  
*setchuenensis* Rehd.  
Wils. 1323, (type) 四川



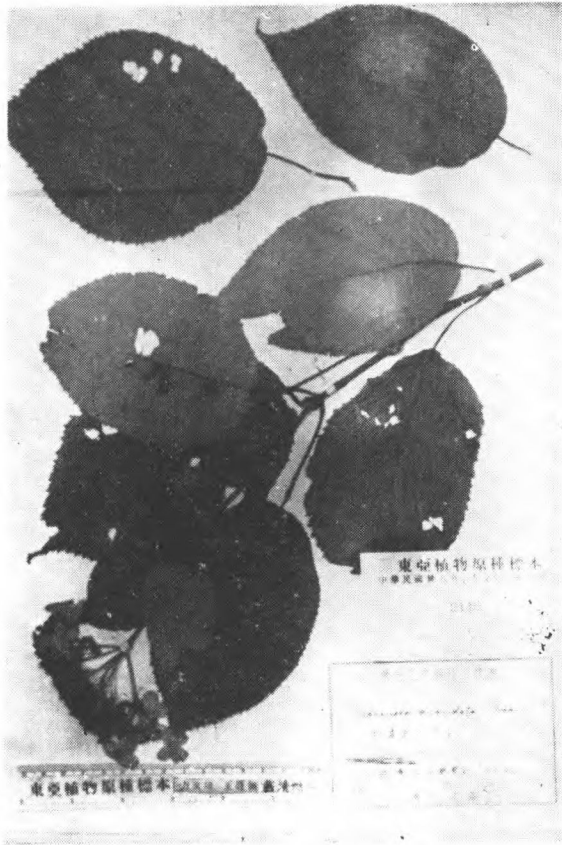
*Hydrangea chinensis* Maxim.  
Hgkg. Herb. 2664.



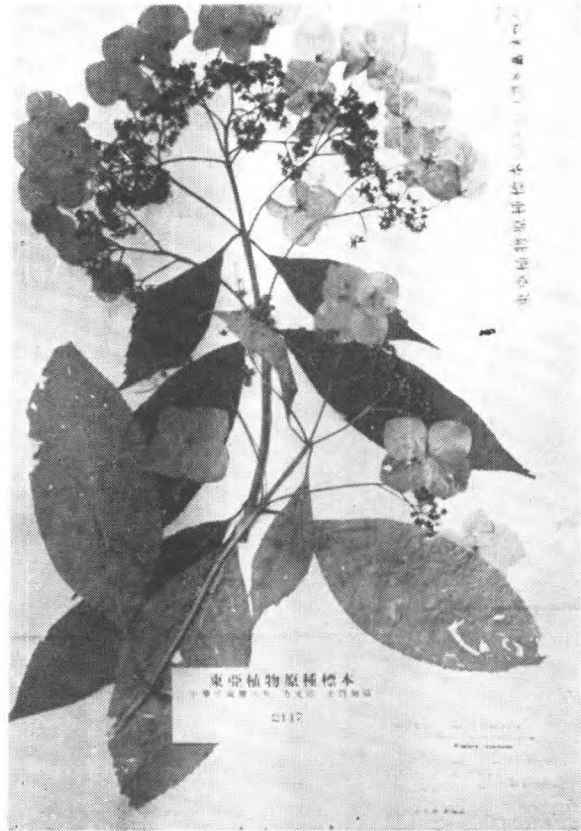
*Hydrangea chloroleuca* Diels  
H. H. Hu 799 (type) 江西永新



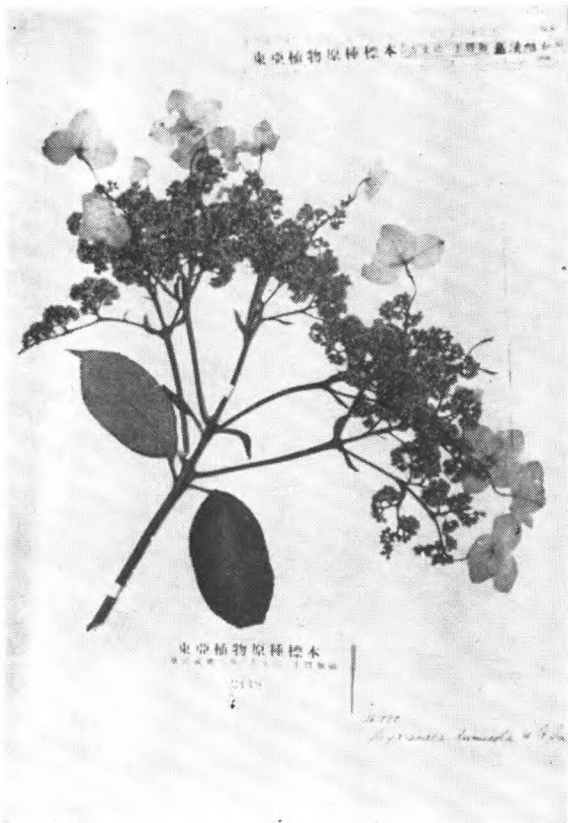
*Hydrangea Chungii* Rehd.  
Chung 3043 (type) 福建延平



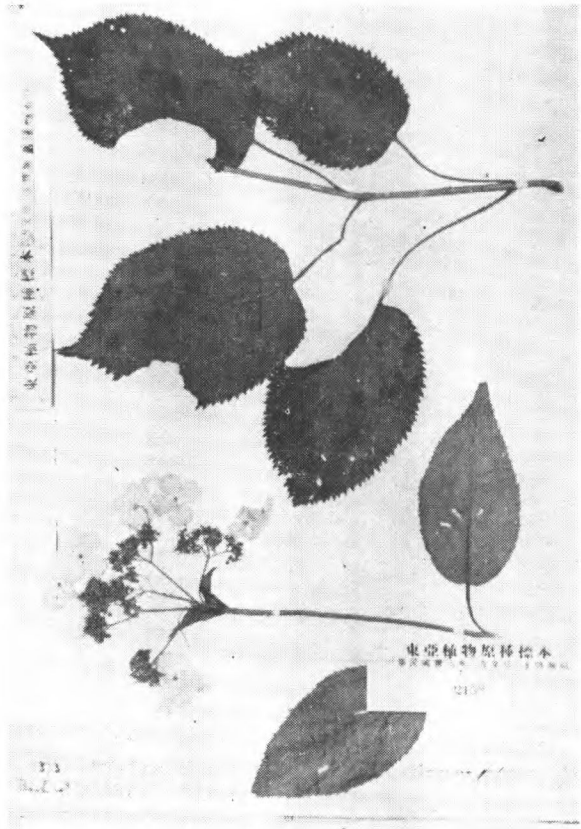
*Hydrangea cuspidata* Makino  
Shiota 5469.



*Hydrangea Davidii* Franch.  
Wils. 115 9 四川穆坪



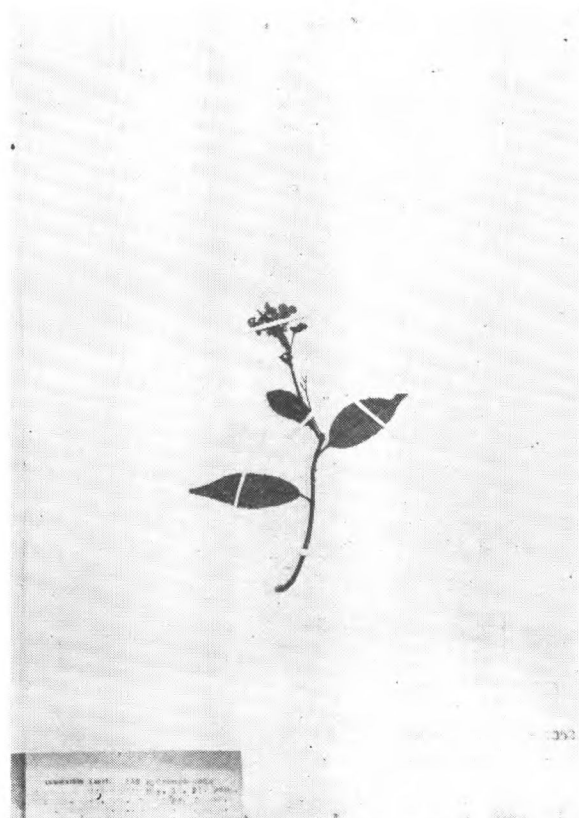
*Hydrangea dumicola* W. W. Smith  
Forr. 26790.



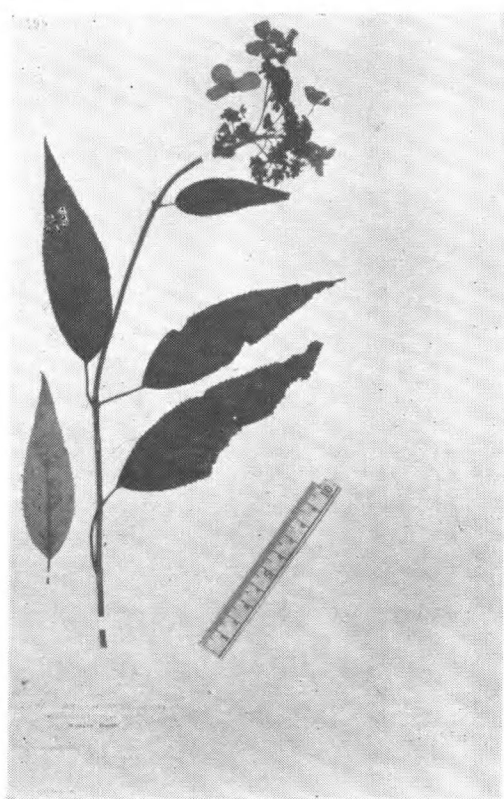
*Hydrangea fulvescens* Rehd.  
Wils. 1373 (type.) 湖北



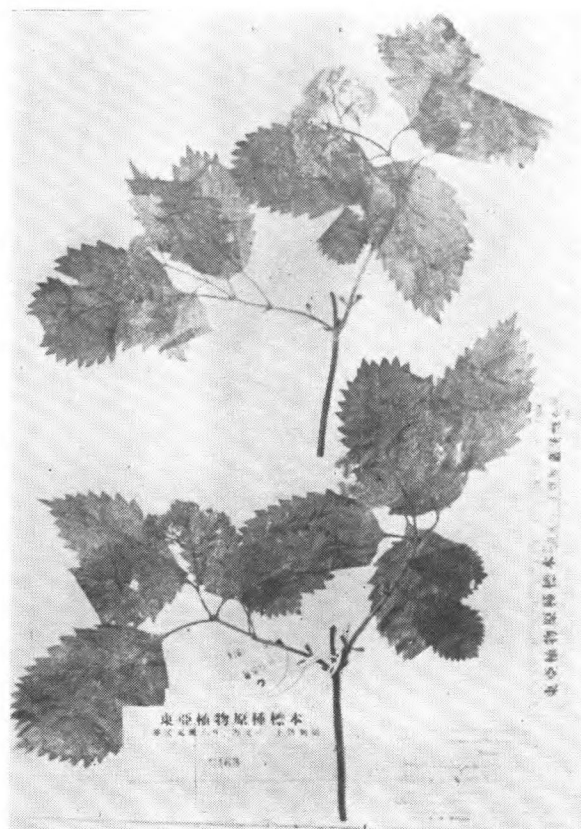
*Hydrangea Giraldii* Diels  
Giraldi 陝西



*Hydrangea glabrifolia* Hay.  
U. Mori 无号 (merotype) Tandaisha, 台湾

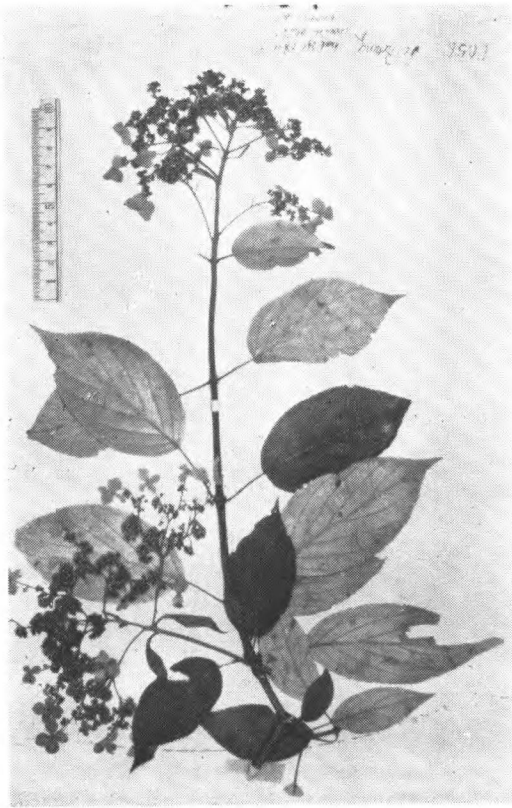


*Hydrangea glabripes* Rehd.  
Wils. 2391 (type.) 湖北房县



*Hydrangea hirta* Sieb. et Zucc.  
Wils. 无号, 日本

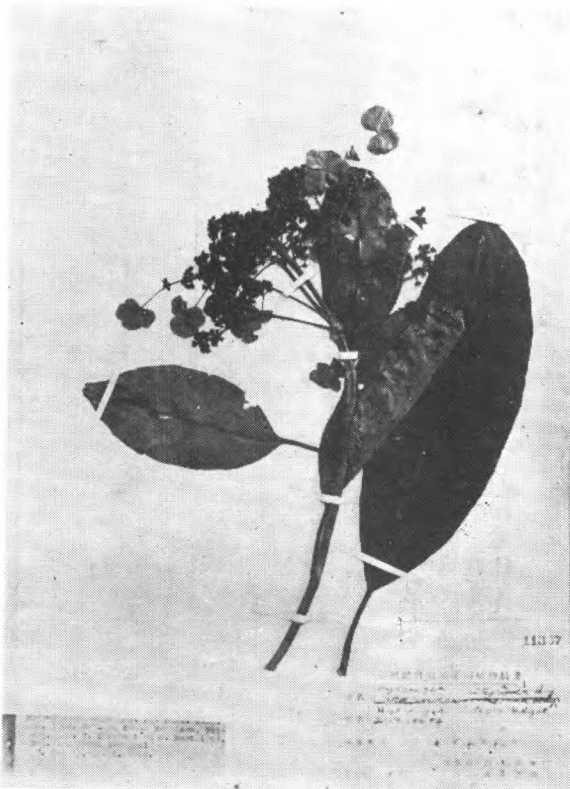




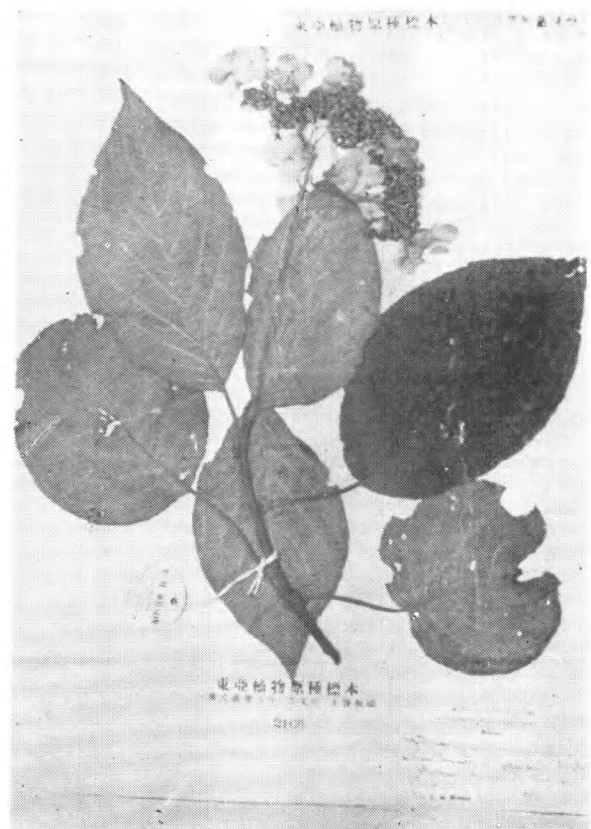
*Hydrangea hypoglauca* Rehd.  
Henry 6056 (type.) 湖北巴东



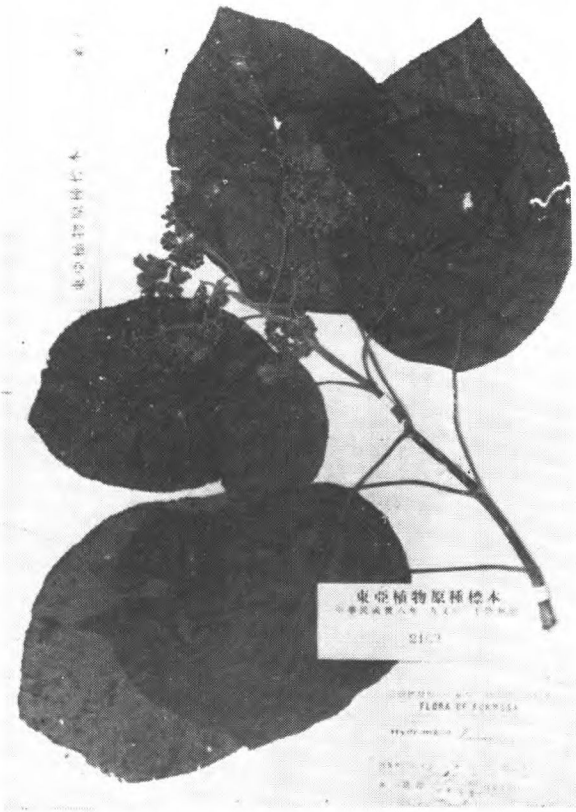
*Hydrangea hypoleuca* Rehd.  
Henry 6056 (type.)



*Hydrangea integra* Hay.  
T. Kawakami et U. Mori 1723, (isotype)  
in monte Morrison, 台湾



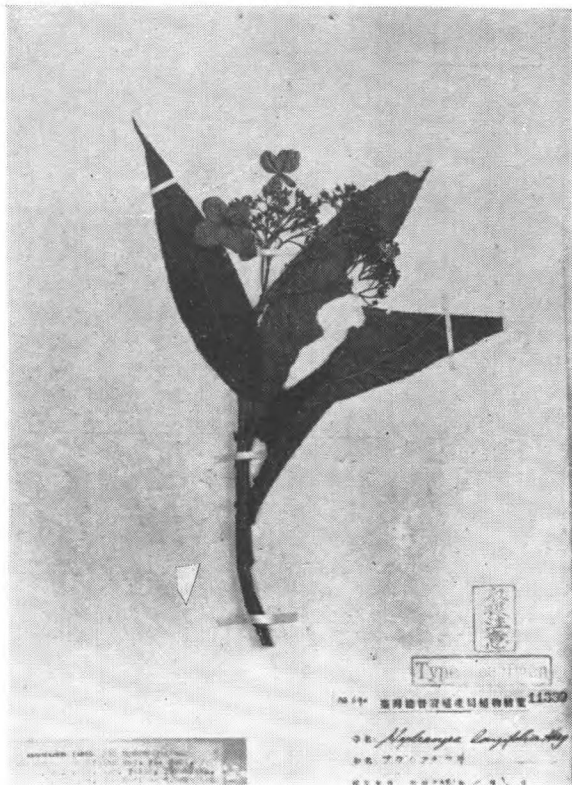
*Hydrangea involucrata* Sieb.  
Wils. 无号, 日本



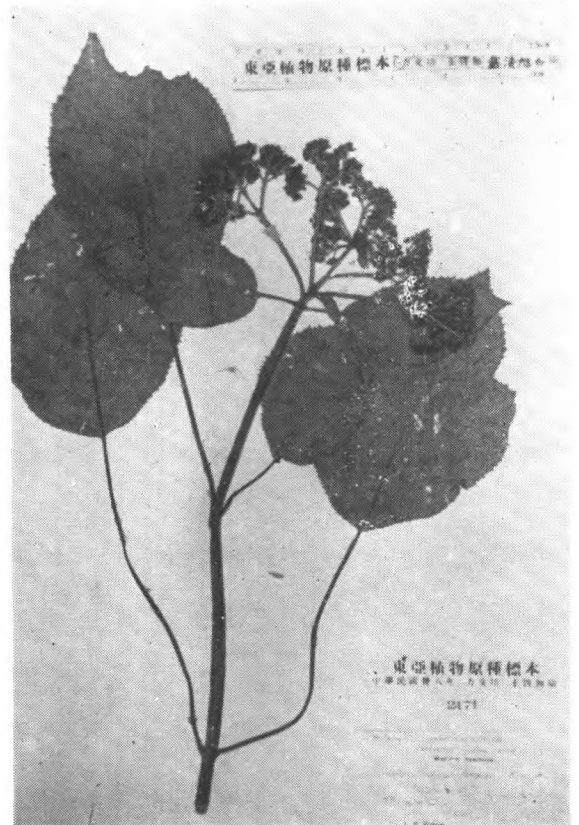
*Hydrangea Kawakamii* Hay.  
Matuda 269 海南



*Hydrangea kwangtungensis* Hu  
Stewart et alis 1003 广西

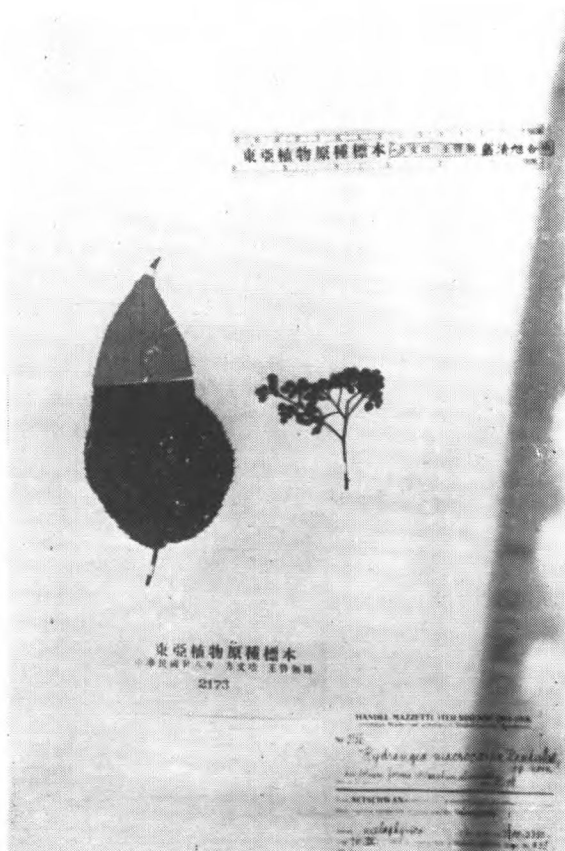


*Hydrangea longifolia* Hay.  
T. Kawakami et G. Nakahara 690 (isotype.)  
Taito, Taroko, 台湾



*Hydrangea longipes* Franch.  
Wils. 2413 四川巫山





*Hydrangea macrocarpa* H.-M.  
H.-M. 5156 (syntype.) 四川



*Hydrangea macrophylla*  
f. *Domotoi*  
Wils. (type.)



*Hydrangea macrophylla* var. *normalis* Wils.  
Wils. 8179 (type.)



*Hydrangea macrophylla* var.  
*serrata* f. *acuminata* Makino  
K. Uno 21871.