

fch
109
C9S12
atlas
(pl.1-20)
Ent.

02



Guelin-
~~526~~



COLLECTION
OF
WILLIAM SCHAUS
©
PRESENTED
TO THE
NATIONAL MUSEUM
MCMV

FQH
109
C9512
Atlas (pl. 1-20)
ENT.
C. 2

HISTOIRE

PHYSIQUE, POLITIQUE ET NATURELLE

DE

L'ILE DE CUBA

PAR

M. RAMON DE LA SAGRA,

DIRECTEUR DU JARDIN BOTANIQUE DE LA HAVANE, CORRESPONDANT DE L'INSTITUT ROYAL DE FRANCE, ETC. ;

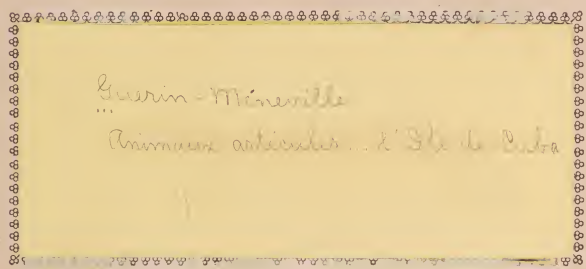
MM. ALCIDE D'ORBIGNY, COCTEAU,

G. BIBRON, A. LEFEBVRE, F.-E. GUÉRIN-MÉNEVILLE, MARTIN SAINT-ANGE, MONTAGNE ;

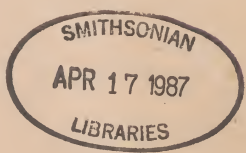
ET

M. SABIN BERTHELOT,

POUR LA TRADUCTION DE L'HISTOIRE PHYSIQUE ET POLITIQUE.



Insectes



PARIS,

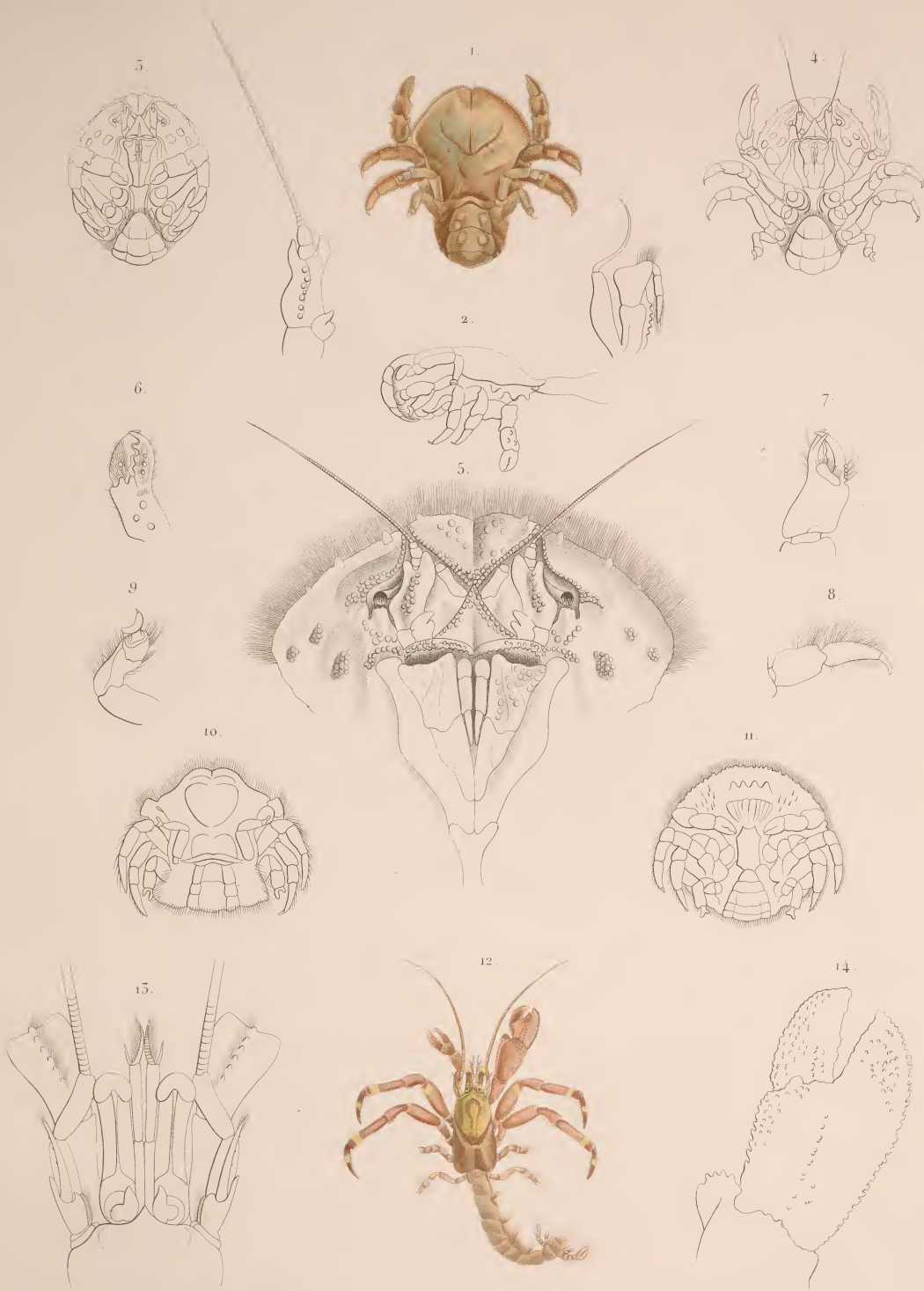
ARTHUS BERTRAND, LIBRAIRE-ÉDITEUR,
LIBRAIRE DE LA SOCIÉTÉ DE GÉOGRAPHIE,
RUE HAUTEFEUILLE, 23.

MADRID,
EN LA LIBRERIA DE D. TOMAS JORDAN,
CALLE DE LA CONCEPCION-GERONIMA.

HABANA,
EN LA LIBRERIA DE D. NICOLAS RAMOS
ESQUINA DEL BOQUETA.

PARIS.—IMPRIMERIE DE M^{me} V^e BOUCHARD-HUZARD, 7, RUE DE L'ÉPERON.

c
199667



Guer. Men. a. Sicetel. del.

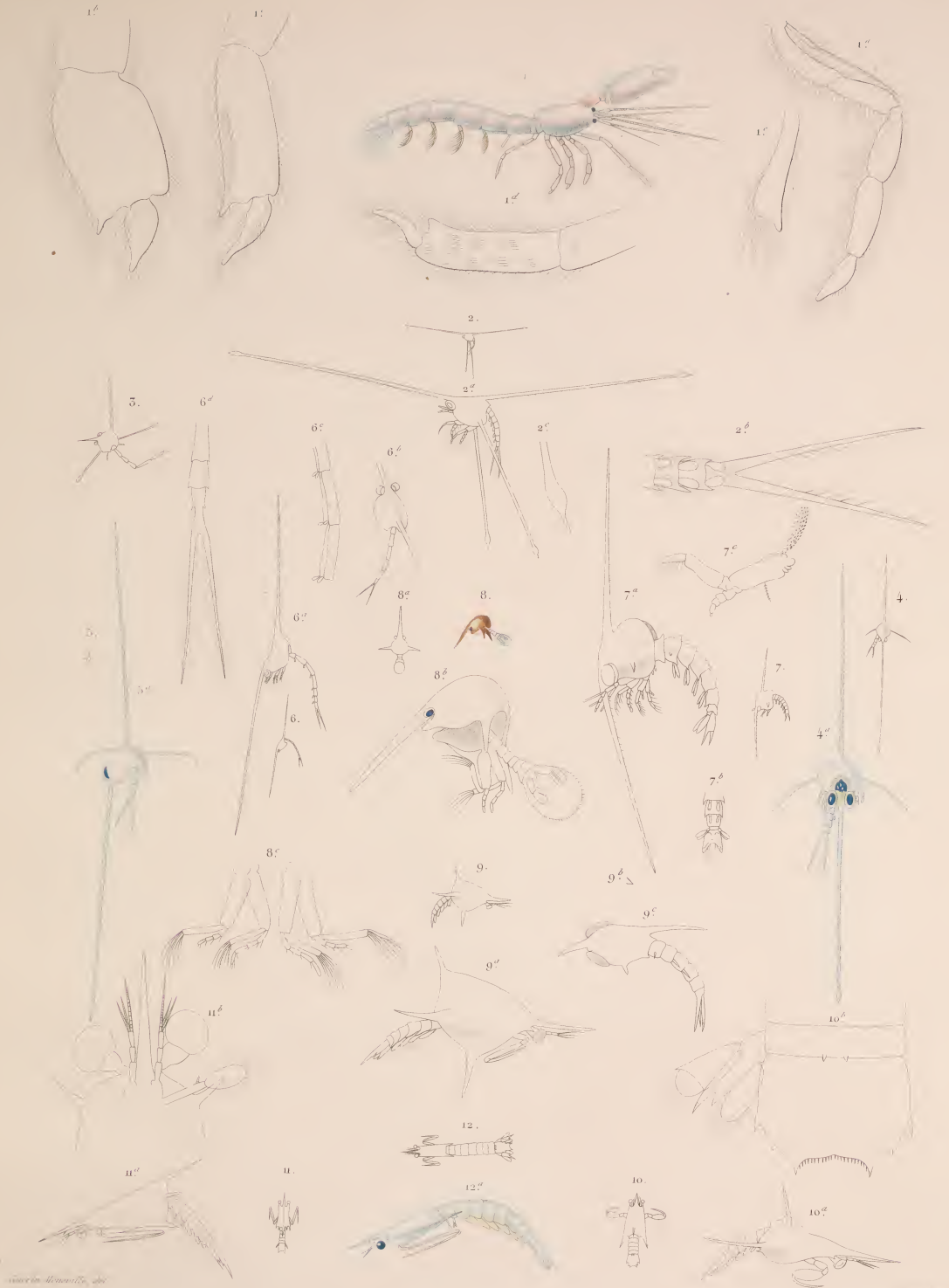
1 à 11. *Hypocoencha sabulosa* Guer. Men.

12 à 14. *Pagurus cinctipes* Guer. Men.



Guer. Mén. et Vieillot del.

1 *Porcellana egregia*. 2 *P. Amans*. 3 *P. Perrai*. 4 *P. Poeyi*. 5 *P. Styracis*.
 6 *P. Gandlachi*. Guer. Mén. 7 *Styx Poeyi*. Guer. Mén. 8 *Alpheus Australis*. 9 *A. Candii*. 10 *A. Poeyi*.
 11 *A. Simus*. Guer. Mén. 12 *Penaeus mexicanus*. Guer. Mén. 13 *Caridina americana*. Guer. Mén. 14 *Quathophilium americanum*. Guer. Mén.
 15 *Sty. elegans*. Risso. 16 *Hippolyte elongata*. Guer. Mén.



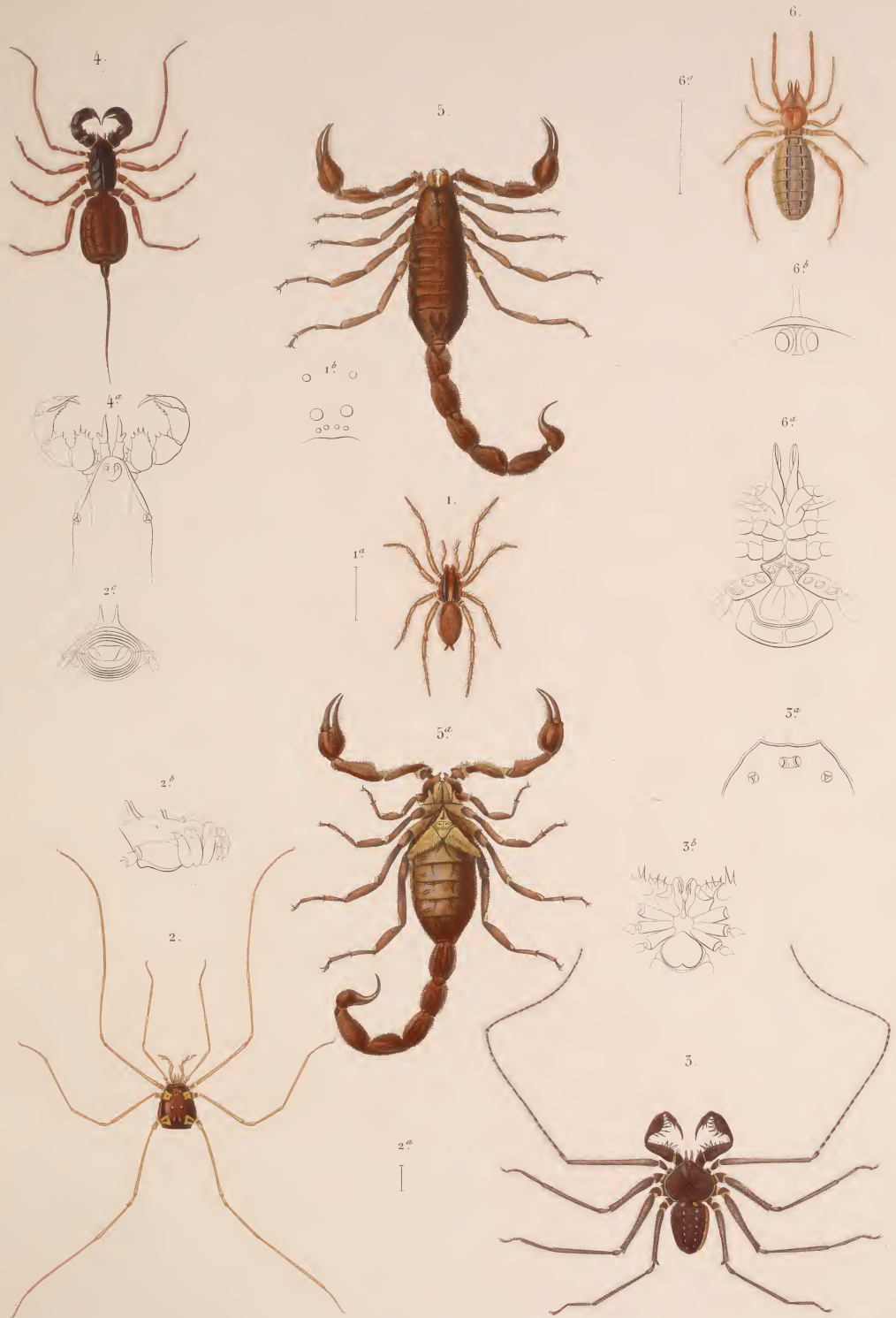
1 *Catantopidea elongata*, Guér. 2 *Voca Loebii*, Guér. 3 *Voca clavata*, Leach 4 *Voca Foulquetii*, Guér.
 5 *Voca Pissini*, Guér. 6 *Voca Westwoodii*, Guér. 7 *Voca gigas*, Westw. 8 *Vocades Guérati*, Guér.
 9 *Cacanthus spiniventris*, Guér. 10 *Succeda Orbigny*, Guér. 11 *Haltinometer Foulquetii*, Guér. 12 *Amerechthas cylindricus*, Guér.



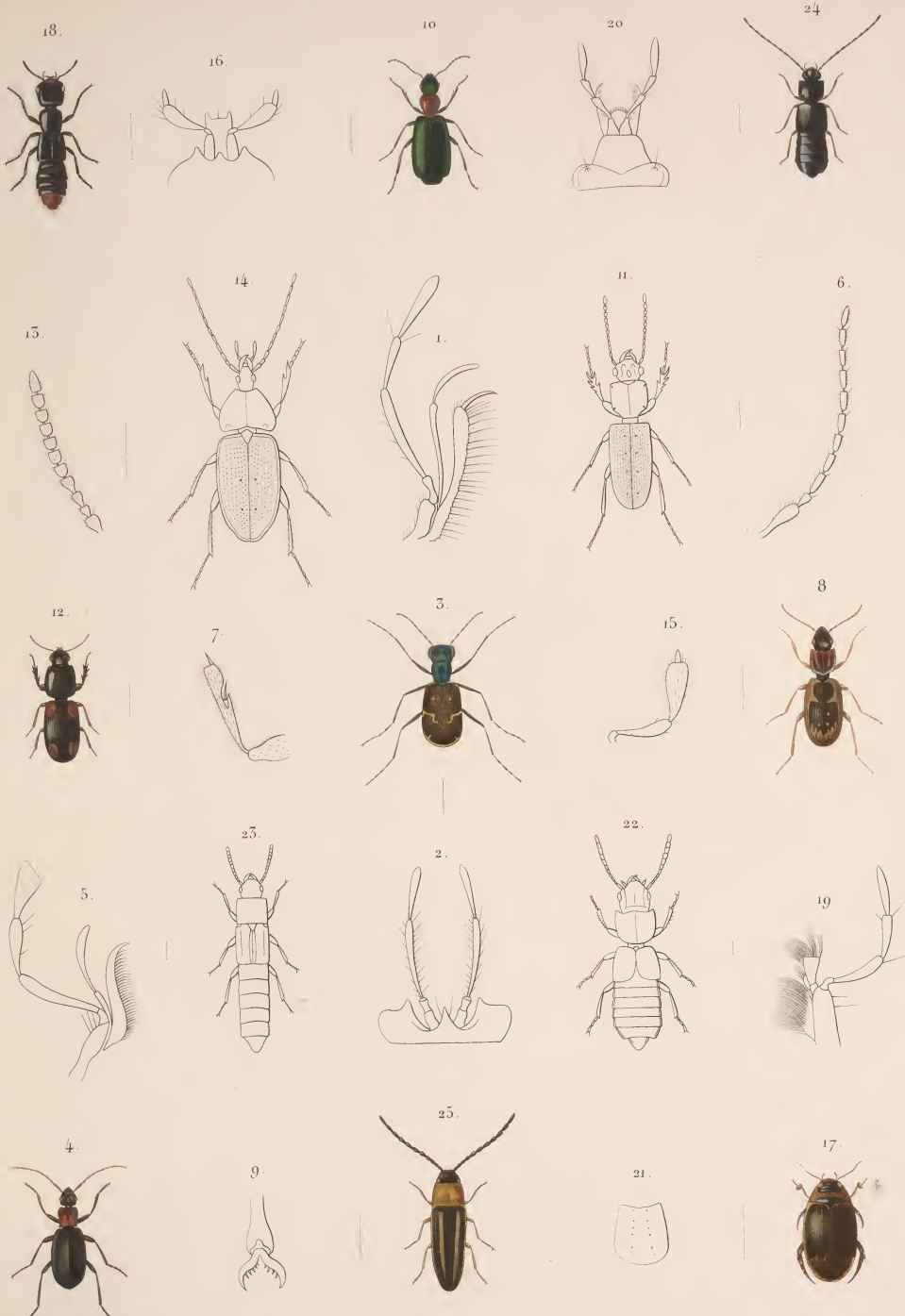
Nicolai pinx.

Clergé sc.

1 ♂ 1 ♀ *Megala spinivras*, Latr. 2 *Filistata subocula*, Lucas. 3 *Apharus Poyei*, Lucas.
 4 *Drapus insularis*, Lucas. 5 *Salticus Tugrens*, Lucas.



1 - *Lycosa insularis*, Lucas. 2 - *Cosmetus quadrimaculatus*, Gerv. 3 - *Pisypus palmatus*, Herbat.
 4 - *Chilophonus antillanus*, Lucas. 5 - *Scorpio Kempriehii*, Gerv. 6 - *Galodes cubae*, Lucas.



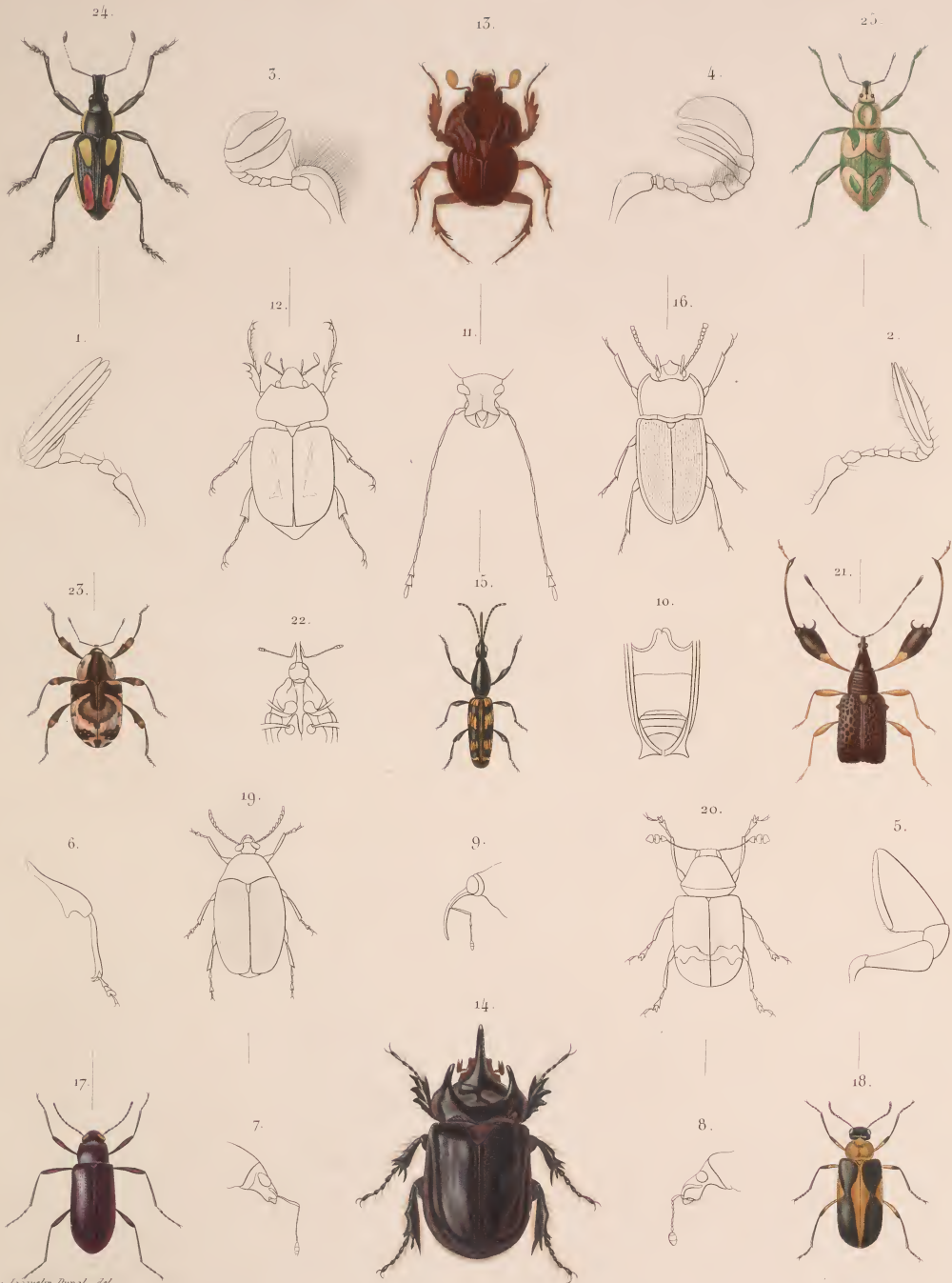
Magnan et Jacquelin Du Val, del.

1 2 *Circindela tortuosa* Détails. 3 *Ore. viridicollis*. 4 5 6 7 *Galerita erythrodera*. 8 9 *Cymindus sulcicollis*.
 10 *Callida rubricollis*. 11 *Charna lambdopus*. 12 *C. bipustulata*. 13 *Meris montivornis* (Antenne). 14 *Colas insularis*.
 15 16 *Dombaldia apicalis* (Détails). 17 *Actias circumscriptus*. 18 19 20 *Polemius agilis*. 21 *Polemius varians* (Fuscus).
 22 *Polyphidius virgatus*. 23 *Lupinus stricli*. 24 *Pistus erythropus*. 25 *Dicropitius Sogranianus*.



Meynaka et Jussuela Paris del.

1 *Cyrcius minutus* (Detail) 2 *Dorcus longimanus* (Detail) 3 4 *Hydrophilus antismodius* (Detail) 5 *Tropisternus collaris*
 6 7 *Suprestis Lamierei* 8 *Chrysobothris auronotata* 9 *Hypocallus Lamierei* 10 *Drapetes cyanipennis*
 11 *Cholevasium punctatum* 12 *Dicroscopidius ramicornis* (Detail) 13 *Monocrepidius lobatus* (Detail) 14 *Pyrophorus hawaiiensis*
 15 16 17 *Alaus patricius* 18 *Coleopterion aulicum* 19 20 *Sticton discoidatus* 21 *Dobbiopa decumana*
 22 23 *Lormestas valpeanus* (Detail) 24 *Emalodes rufipennis* 25 *Hister confinis*.



Magnans a. J. Scipio Dural del.

- | | | | |
|---|--|--|---|
| 1. <i>Anoplonychia confusa</i> (Detail) | 2. <i>Cylocephala signata</i> (Detail) | 3. <i>Trox panotatus</i> (Detail) | 4. <i>Papilio interstitialis</i> (Detail) |
| 5. <i>Putorius anthracinus</i> (Detail) | 6. <i>Cryptorhynchus difficilis</i> (Detail) | 7. <i>Lachnopus sublineatus</i> (Detail) | 8. <i>Prepodes spectabilis</i> (Detail) |
| 9. <i>Macromerus clavipes</i> (Detail) | 10. <i>Belophasas militaris</i> (Detail) | 11. <i>Anthrenus fascicularis</i> (Detail) | 12. <i>Cylocephala signata</i> |
| 13. <i>Athyrenus castaneus</i> | 14. <i>Stalagus Anachroeta</i> | 15. <i>Archonodes foveoligerus</i> | 16. <i>Hypogena traversa</i> |
| 17. <i>Stenochla amethistina</i> | 18. <i>Monogmalla cubivola</i> | 19. <i>Ipomoeophagus sinuatus</i> | 20. <i>Tropidodes butirota</i> |
| 21. <i>Sticticus scutellatus</i> | 22. <i>Macromerus clavipes</i> | 23. <i>Pendulatus signatus</i> | 24. <i>Papilio pictus</i> |
| | | | 25. <i>Prepodes clavipes</i> |



Mignaux et Jac. Duvol del.

(Goyé sc.)

- | | | | | | |
|----|---------------------------------------|----|-----------------------------------|----|---------------------------------|
| 15 | <i>Encarthron laevius</i> | 19 | <i>Colobius rugosulus</i> | 25 | <i>Aulonium bidentatum</i> |
| 14 | <i>Eryoneta transversicollis</i> ant. | 20 | <i>Sphenophorus sericeus</i> | 26 | <i>Lachnopus Guerinii</i> |
| 15 | <i>Homalidium costipennis</i> ant. | 21 | <i>Albina oblita</i> | 27 | <i>Lachnopus argus</i> |
| 16 | <i>Platypus subcostatus</i> | 22 | <i>Cornus castaneipennis</i> ant. | 28 | <i>Orthocentrus Dej.</i> |
| 17 | <i>Acalles apicalis</i> | 25 | <i>Exophthalmus sommieri</i> | 29 | <i>Baridius quadrimaculatus</i> |
| 18 | <i>Adelina plana</i> | 24 | <i>Platypus Boeyi</i> palle | 30 | <i>Baridius argus</i> |



Musmann in den Denks. 1844

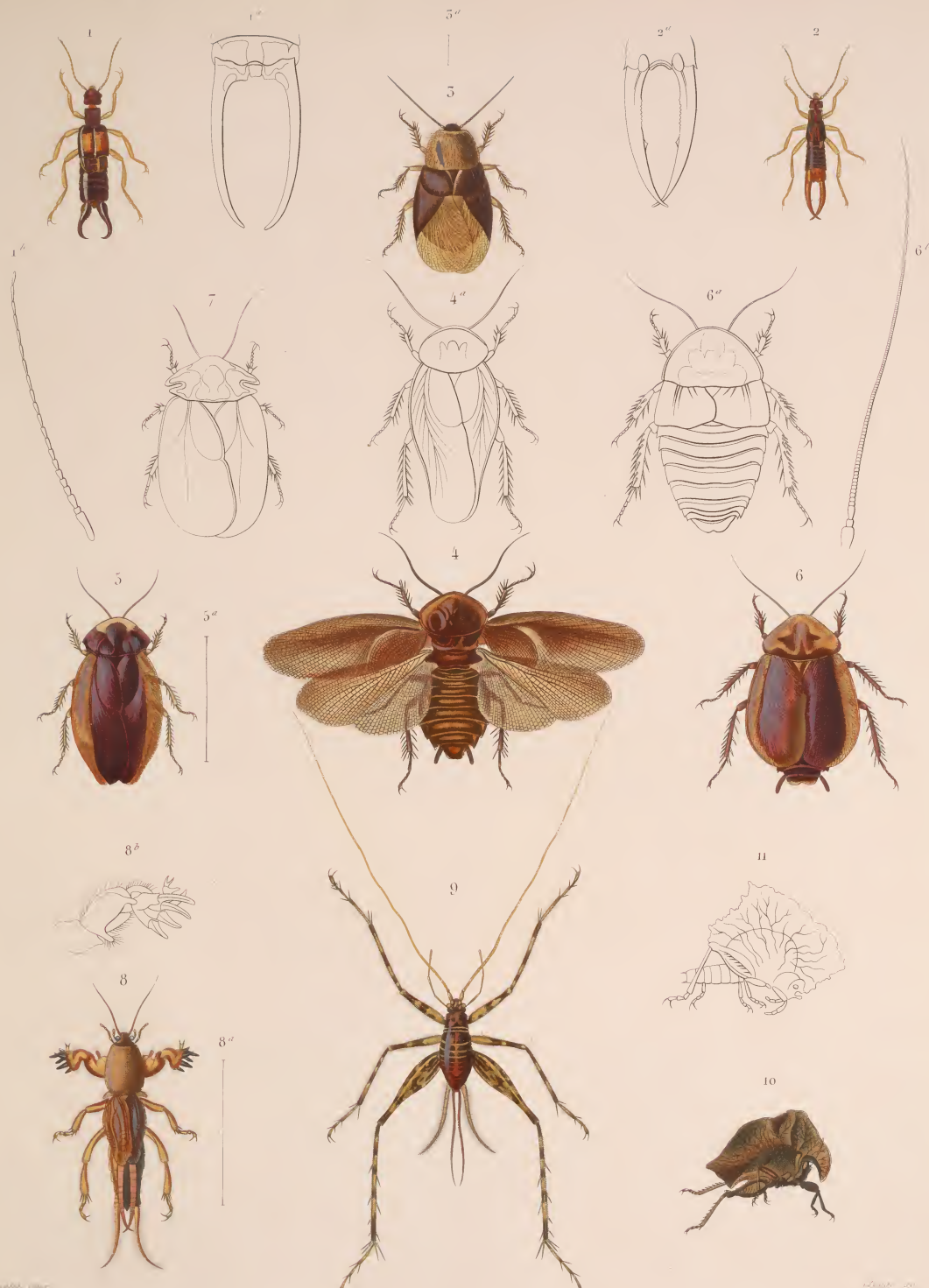
dege n.

1 *Selenoporus musmanni*. 2 *Selenoporus lineatus*. 3 *Calliobrya colombina*. 4 *Ceryphus lanieri*. 5 *C. densipennis*.
 6 *Ceryphus concoloratus*. 7 *Ceryphus innotatus*. 8 *Pachylodermus leptocoides*. 9 *Chontocera brachyptera*.
 10 *Pachylodermus apiculatus*. 11 *Annulicera dealbatus*. 12 *Homalophilus venustus*. 13 *Euthuonus filum*.



Magnus a. Jacquetta Du Pal, del.

1 *Staphylinus* Poey. 2 *Leptocoma araneiformis*. 3 *Leptocoma confusa*. 4 *Cryptocephalus marginicollis*.
 5 *Myxobolus dufurii*. 6 *Chrysomela* Poey. 7 *Lina cruentipennis*. 8 *Phyllotreta pulchella*.
 8 a *Cerostoma dentocornis* Antenne. 8 b *Calonychia fasciata* (Patte post.) 9 *Odontota arthra*. 10 *Archyris flaviventris*.
 11 *Coccyzus violaceus*. 12 *Megilla maculata*. 13 *Egira platycapitata*. 14 *Eptachium borealis*. (Détails)



1. *Pezomachus destructus* Guér. 2. *Pezomachus affinis* Guér. 3. *Blatta cellaris* Burm. 4. *Blatta japonica* Guér.
 5. *Blatta orientalis* Burm. 6. *Blatta tuberculosa* Guér. 7. *Blatta fipicollis* Serv. 8. *Grillotalpa horradactylus* Serv.
 9. *Blattella germanica* Linn. 10. *Hymenocera leprosa* Serv. 11. *Hymenocera rhombica* Felton.

Illustrated by F. Schlegel, del. J. de Meijere, sculp.



Psylla sp. *Cicada sp.*
 1. *Psittacus* *Major* Guér. 2. *Psittacus* *Spanghofferi* Guér. 3. *Psittacus* *punctulata* Chabouss. 4. *Psittacus*, Victor.
 5. *Psittacus* *reticulatus* Guér. 6. *Cicada* *Spanghofferi* Guér. 7. *Psittacus* *Spanghofferi* Guér. 8. *Psittacus* *unicolor*, Guér.
 9. *Psittacus* *Andrieuxi* Guér. 10. *Cicada* *Spanghofferi* Guér. 11. *Psittacus* *Spanghofferi* Guér. 12. *Psittacus* *qualisquidatus*, Guér.
 13. *Cicada* *Spanghofferi* Guér. 14. *Psittacus* *Spanghofferi* Guér. 15. *Psittacus* *Spanghofferi* Guér. 16. *Cicada* *Major*, Guér.
 17. *Psittacus* *Spanghofferi* Guér. 18. *Psittacus* *Spanghofferi* Guér. 19. *Psittacus* *Spanghofferi* Guér. 20. *Cicada* *uniformis*, Fairm.



1. Papilio PIRITHOUS (femelle) 1^{re} id. en dessous.
 2. Papilio ARISTODEMUS (mâle) 2^{re} id. en dessous.
 3. Chenille et Chrysalides du Papilio NEODAMAS.



1, 1' Pieris Vallei, Boisdu 2, 2' Pieris Joppe, Boisdu 3, 3' Pieris Elodia, Haberm.
 4, 4'' ♂ 4', 4''' ♀ Callidryas agarithe, Boisdu 5, 5'' ♂ 5', 5''' ♀ Callidryas Neleis, Boisdu



1. 1♂ *Terias stygmula*, Boisdu.

2. 2♂ *Terias Westwoodii*, Boisdu.

5. 5♂ *Terias Gnathene*, Boisdu.

5. 5♀ *Terias Arabella*, Lefebv.

4. 4♂ *Apatura Theodora*, Lefebv.

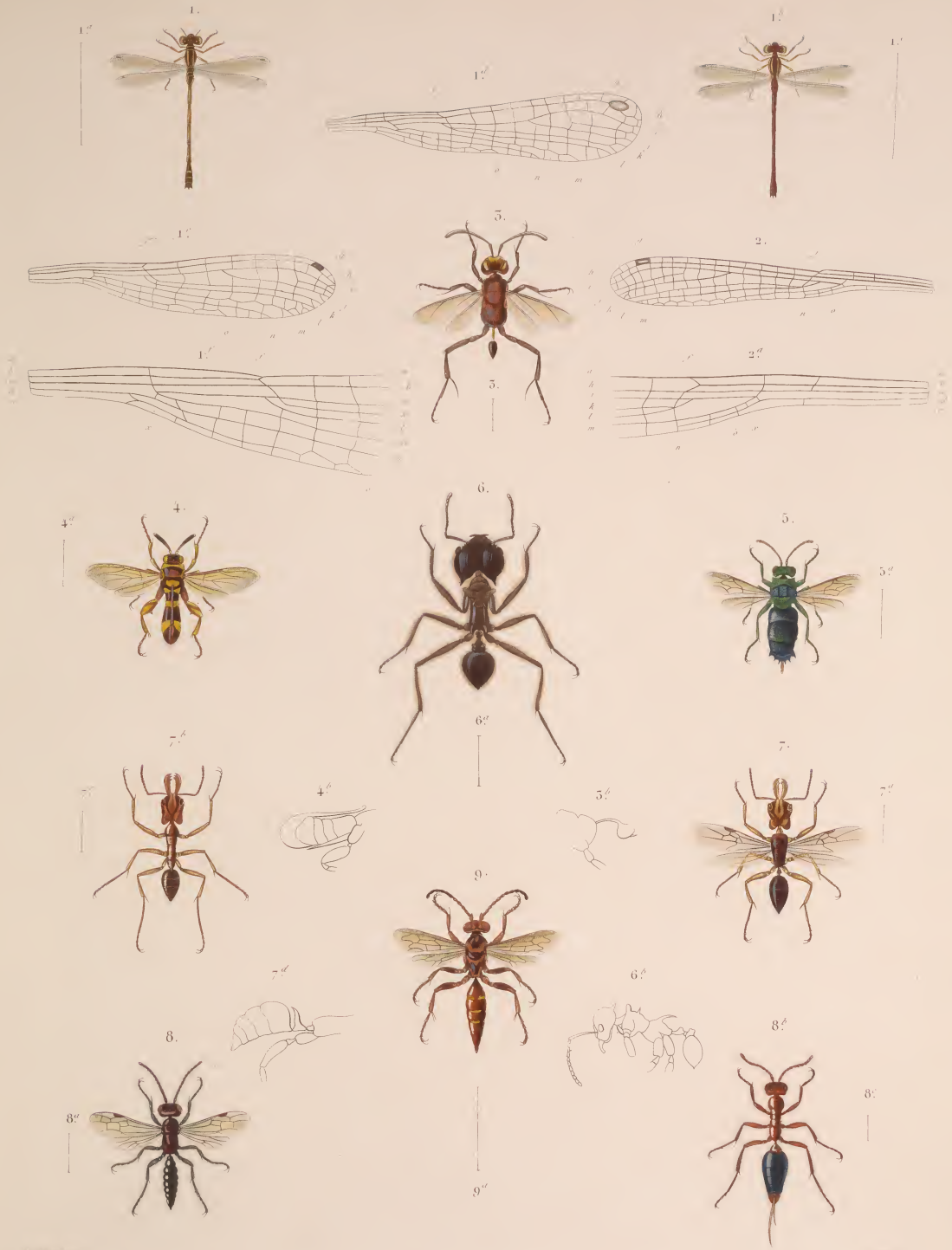
6♂, 6♀ *Thecla Aon*, Lefebv.

7♂, 7♀ *Lycæna Ammon*, Lefebv.

8♂, 8♀ *Lycæna Theonus*, Lefebv.

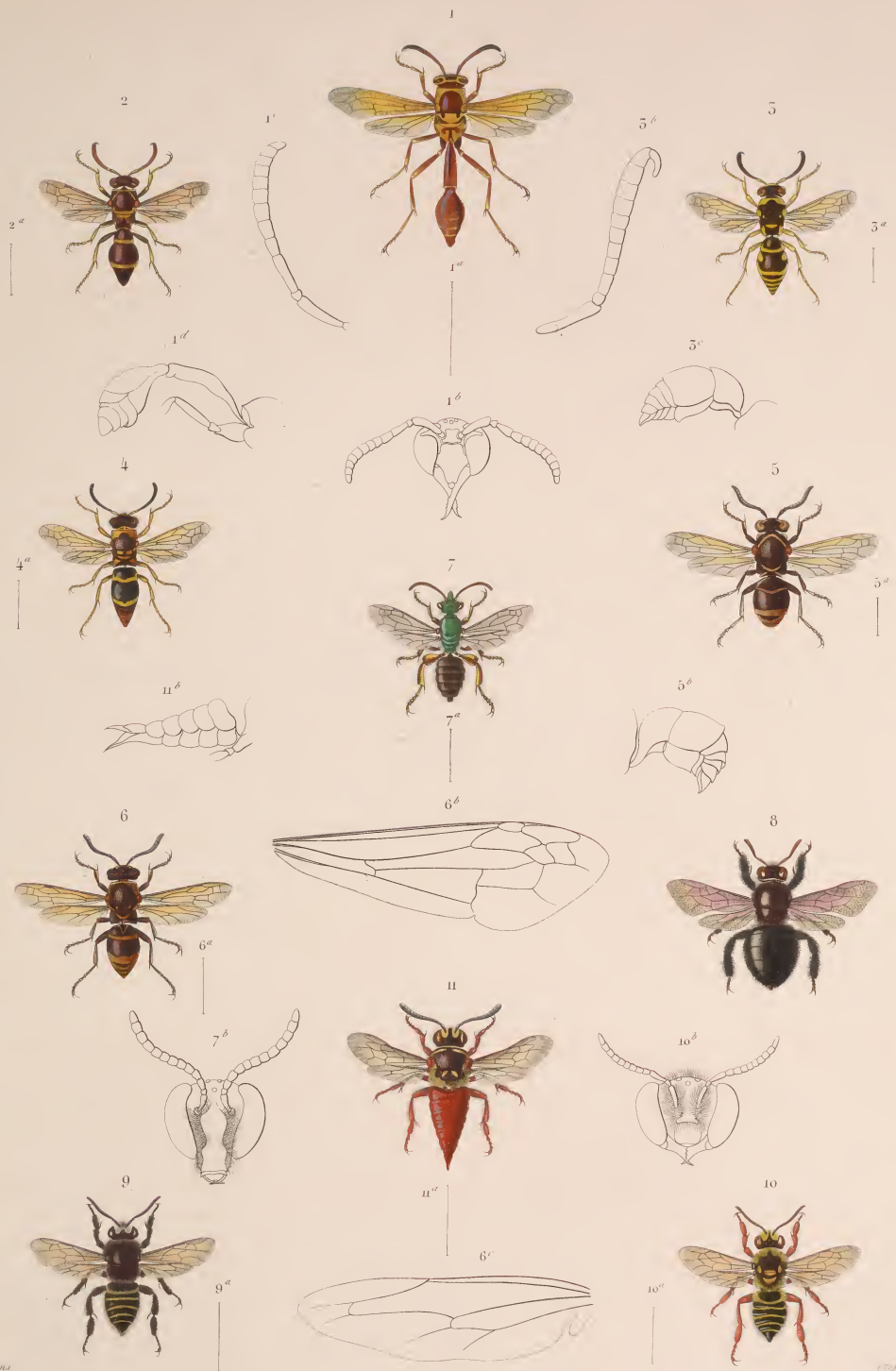


1, 1^a *Cydimon Boisduvalii*, *Cham.* 2 *Callionime Parce*, *Cham.* 3 *Philampelus Labruscæ*, *Linn.*
 4 *Philampelus vitis*, *Cham.* 5 *Philampelus fasciatus*, *Cham.* 6 *Oiketicus Poeyi*, *Lut.*



Europe, part *Europe, part*

1 ♂ 1' ♀ *Tipula instutata* Say. 2, 2' *Chrysopa populi* L. *Chrysopa capitata* Ramb. 5 *Crucian* *Populi* *tipula*
 4 *Chrysopa* *Populi* Guér. 5 *Chrysopa* *instutata* Guér. 6 *Chrysopa* *capitata* Guér. 7 *Chrysopa* *populi* Guér.
 8, 8' *Chrysopa* *populi* Guér. 9 *Chrysopa* *populi* Guér.



1 *Camponotus colona*, de Sauss. 2 *Colpoclerus incommodus*, de Sauss. 3 *Colpoclerus bicolor*, de Sauss. 4 *Colpoclerus cubensis*, de Sauss.
 5 *Colpoclerus simplicicornis*, de Sauss. 6 *Colpoclerus brachygaster*, de Sauss. 7 *Andrena femoralis*, Guér. 8 *Andrena calceata*, Guér.
 9 *Andrena punctata* ♀, Guér. 10 *Andrena Leroyi* ♀, Guér. 11 *Andrena abnormis* ♀, Guér.



Scutellus pinus

Chrysosoma

- | | | | |
|--|--------------------------------------|---|---------------------------------------|
| 1 <i>Stomoxys similes</i> , Bigot. | 2 <i>Lasiopterus parvum</i> , Bigot. | 3 <i>Senecellus azarabidus</i> , Bigot. | 4 <i>Pemphigus insularis</i> , Bigot. |
| 5 <i>Hyppus quadrifasciatus</i> , Bigot. | 6 <i>Cnops hennardi</i> , Bigot. | 7 <i>Cachina elegans</i> , Bigot. | 8 <i>Scopelia nigra</i> , Bigot. |
| 9 <i>Hyppus guercinus</i> , Bigot. | 10 <i>Scimia piceicola</i> , Bigot. | 11 <i>Meloboris metallica</i> , Bigot. | |

AUTHOR. *Guerin-Meneville.*

TITLE. *Articulata de L'ile de Cuba*

SMITHSONIAN INSTITUTION LIBRARIES



3 9088 00073 1141

