

Historic, archived document

Do not assume content reflects current scientific knowledge, policies, or practices.



WOODLAWN NURSERIES

ALLEN L. WOOD *Proprietor*

891 GARSON AVE. COR. CULVER ROAD
ROCHESTER, NEW YORK

1876 = 1925



WOOD'S QUALITY SHRUBS

	<i>Each</i>
1—Deutzia Candida50
2—Weigela Rosea50
3—Spirea Van Houttei50
4—Hydrangea P. G.	\$.60
5—Forsythia50
6—Butterfly Bush50
7—Syringa Grandiflorus50
8—Snowberry Racemosus50

See pages 32 to 38



This is a view in our Nursery, showing the wonderful growth of our Shrubby. We have over one-half million Shrubs of different varieties growing on this farm. They are the largest and best to be found anywhere. It will pay you to plant "WOOD'S QUALITY STOCK."

**WE GUARANTEE ALL OUR STOCK TRUE TO NAME
(SEE ORDER BLANK)**

This Catalog Is Our Only Salesman We Employ No Agents

If we had to pay salesmen's commissions, salaries and traveling expenses, we could not afford to sell our stock as cheap as we do, as it would add 50 to 60 per cent to the cost of same. We grow our own nursery stock and sell it direct from our Nurseries to you. Our good business record is known all over the country. Agents from other Nurseries say that trees sold at our prices cannot be first class. This is what the United States Department of Agriculture says in The Farmer's Bulletin, No. 113:

"If the farmer makes his purchase direct from the Nurseryman, he will save the expense of the middleman or agent, and is less liable to the mistakes and injuries that may occur through repeated handling."

Deal direct with the grower. It's the sure way to get good stock and the only way to save money when buying trees and plants.

**BE SURE TO READ PAGE 6 BEFORE ORDERING
CERTIFICATE—NO. 18**

**STATE OF NEW YORK
DEPARTMENT OF FARMS AND MARKETS
BERNE A. PYRKE, Commissioner**

CERTIFICATE OF INSPECTION OF NURSERY STOCK

THIS IS TO CERTIFY that the nursery stock of Allen L. Wood of Rochester, County of Monroe, State of New York, was duly examined in compliance with the provisions of Article 14 of the Farms and Markets Law, and was found to be apparently free from any contagious or infectious disease or diseases, or the San Jose scale or other dangerously injurious insect pest or pests. This certificate expires September 1, 1925.

Dated, Albany, N. Y., September 1, 1924.

BERNE A. PYRKE, Commissioner.

By GEORGE G. ATWOOD,
Director, Bureau of Plant Industry.

"Wood's Quality"

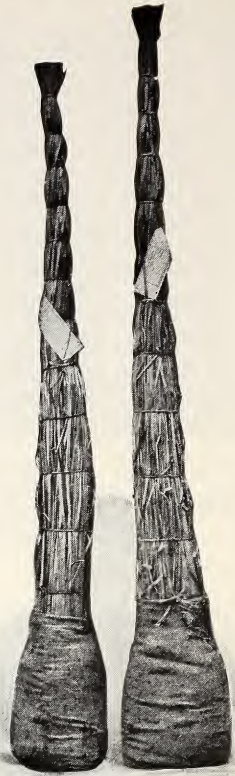


IN TREES MEANS—good fibrous roots, well-shaped heads, clean limbs and Trees true to name.

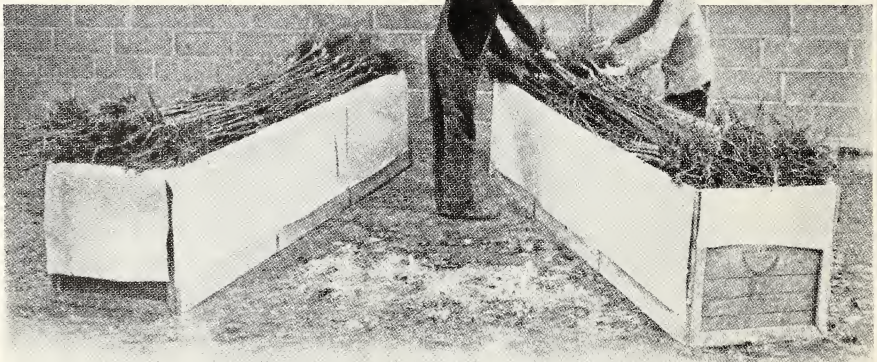


"Wood's Quality"

IN PACKING INSURES your order getting to you in the best of condition. Small orders are carefully tied up, the tops in flag to keep the trees from bruises and the roots in damp moss, wrapped over with burlap to retain the moisture.



Large orders are packed in paper lined boxes. We use wet moss for the roots, straw for the tops. The paper lining keeps the air and frost out and the moisture in—
"Wood's Quality"



ESTABLISHED FOR FORTY-NINE YEARS

In 1876 Mr. Wood started in the Nursery Business on one acre of land, and has gradually been increasing his plantings until he now has one of the largest Nurseries in this part of the country. He has often been asked how he built up such a large trade all over the United States, Canada and foreign countries. This is how: By always shipping stock true to name; growing the very best trees and plants; and trying to please his customers. He wants to extend thanks to his customers for advertising the trees and plants which they have purchased from him, and for helping him build up such an extensive business. If we do not have what our customers order, we write and tell them.

WOOD'S QUALITY STOCK

We have made a practice of growing the finest and best stock. It is all high grade, healthy, well-rooted and well-matured before it is dug. No San Jose or Peach Yellow has ever been found in our Nurseries. We grow all our Fruit Trees, Shrubbery, Ornamental Trees, Vines, Roses, Hedge Plants, etc. The seedlings which we use are of the very best and are all imported from France. They are cultivated twice each week, which makes good roots. Our Roses are all budded from Roses that are in bloom. We guarantee all our stock to be true to name and free from all diseases.

PACKING CELLAR

Our Packing Cellar in which your orders are packed is frost-proof and keeps the sun and wind from drying up the roots on the stock. It covers over an acre of ground. On page 3 we show how your orders are packed.



OUR FREIGHT PLATFORM

INFORMATION FOR CUSTOMERS

BE SURE TO READ THIS PAGE—IMPORTANT

OUR CATALOG

In presenting this 48th edition of our catalog we extend thanks for your past patronage and assure you, and all customers, of prompt and careful attention to all inquiries and orders with which you may favor us.

RELIABILITY

For forty-eight years we have devoted our time to the growing of high grade nursery stock and have built up a business that enables us to list ourselves among the foremost nurserymen in the country. As to our reliability, we are pleased to refer you to Dun's or Bradstreet's or any bank or business house in Rochester.

HOW TO ORDER

In making out your order, be particular to specify just what is wanted. Your name, postoffice and shipping point should be written plainly to avoid mistakes. If you are in doubt as to whether your stock should go forward by express or freight, you may leave it to us and we will use our best judgment.

PARCEL POST

Small packages can be forwarded by parcel post. Postage is required on orders to be sent by parcel post. Strawberries should be sent either by express or mail—not freight. **SEND PAYMENT WITH ORDER.** All orders are acknowledged immediately upon receipt.

PACKING

OUR PACKING CELLAR, covering over one acre of ground, and in which the sun or the wind cannot dry up the roots of stock, is where all our orders are packed. Care is given to the packing of each order, which enables us to get your stock to you in fresh condition.

Small orders are carefully tied up, the tops in flag (see page four) to keep the trees from bruises and the roots in damp moss wrapped over with burlap to retain the moisture. Large orders are packed in paper lined boxes (see page four). We use wet moss for the roots and straw for the tops. The paper lining keeps the air and frost out and the moisture in.

SHIPPING

We do not charge for packing, boxing or delivering to freight offices or express companies. We do not prepay charges, unless goods are to be delivered to a prepaid station, as all our prices and quotations are **FREE ON BOARD CARS AT OUR NURSERIES.** If there is no agent at your station, and shipment has to be prepaid, notify us and we will prepay charges and bill you for same after shipment is made.

SHIPPING SEASONS

The spring shipping season usually commences here about March 1st, and continues until about May 15th. Of course, the time of shipping your stock depends on your location. We commence making Southern shipments about January 1st. Our fall season commences about October 15th, and we continue to make shipments until the ground freezes. We advise spring planting for Berry plants and Peach trees.

HOW TO REMIT

Remittance should be made by check, postoffice money order, express money order or draft on New York bank, or registered letter.

RATES

Five trees or more at ten rate.
 Fifty trees or more at hundred rate.
 Four hundred trees or more at thousand rate.

TERMS

Cash with order, except in large orders, when satisfactory reference is given. We will ship trees and plants C. O. D. if 25% of the total amount of your order is sent in cash. The balance to be collected on delivery of stock.

GRADING

We guarantee every Tree, Plant, etc., to be up to grade specified or better. All our Fruit Trees are graded by height and caliper.

What To Do With Trees When They Arrive

If possible remove the trees from the box at once on arrival and heel them in securely in the garden. We mean by this, give them a temporary planting in a trench, which prevents the roots or branches from drying. If they cannot be removed from the box at once, and packing material gives evidence of being at all dry, apply water to both ends of the box, where the roots are located, keeping the box meanwhile in as cool a place as possible. A cool cellar is a good place to keep the box of trees waiting for the day of planting.

Distance for Planting

Apples, Standard 30 to 40'	Grapes 8 by 10'
Apples, Dwarf 8 to 10'	Currants 3 by 5'
Pears, Standard 18 to 20'	Gooseberries 3 by 5'
Pears, Dwarf 10'	Raspberries, Red 3 by 6'
Peaches 16 to 18'	Raspberries Black 3 by 6'
Nectarines and Apricots 16 to 18'	Blackberries 5 by 7'
Cherries, Sweet 18 to 20'	Strawberries, rows 1 by 4'
Cherries, Sour 15 to 18'	Strawberries in beds 1½ by 1½'
Plums 16 to 20'	Asparagus in beds 1 by 1½'
Quinces 10 to 12'	
Asparagus, in field 1 by 3'	

Trees and Plants to the Acres

2 feet each way 10,890	15 feet each way 194
3 feet each way 4,840	18 feet each way 135
4 feet each way 2,723	20 feet each way 110
5 feet each way 1,742	25 feet each way 70
6 feet each way 1,210	30 feet each way 48
8 feet each way 680	33 feet each way 40
10 feet each way 430	40 feet each way 28
12 feet each way 202	

To estimate the number of plants required for an acre, at any given distance, multiply the distance between the rows by the distance between the plants, which will give the number of square feet allotted to each plant, and divide the number of square feet in an acre (43,560) by this number. The quotient will be the number of plants required.

WHY TREES DIE—The majority of trees that fail to live, die from careless or improper planting. We feel sure that if you will carefully follow the instructions as given in our little pamphlet on planting and managing nursery stock, which we send the same day as orders are shipped, your trees will grow and prove a source of pleasure and profit. Nothing flourishes with neglect. This is true with trees as well as everything else. Handle your trees carefully, plant them correctly and give them a little attention after planting, and you will be surprised at the ease with which very favorable results can be obtained.

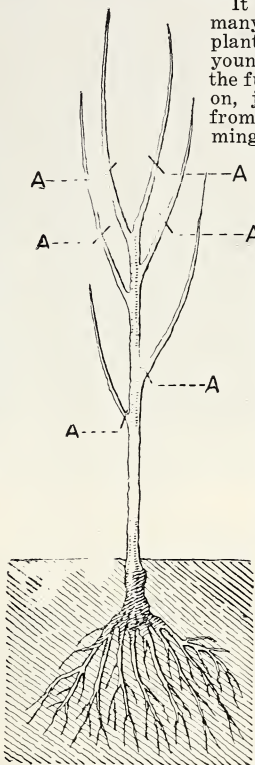
Mulching—This is properly done by placing a layer of coarse manure, straw, marsh hay, leaves or loose chip dirt, from three to six inches deep on the surface about the tree, extending one or two feet farther, in each direction, than the roots. This keeps the ground moist, of even temperature, and renders watering unnecessary. The sod which was removed in digging the hole can be used, but it should be moved occasionally to prevent it from beginning to grow again. Trees treated in this manner make better growth and are more certain to live.

TRIMMING

It is surprising how many orchards you see planted out with the young trees left with the full amount of limbs on, just as they came from the nursery. Trimming should be done

either immediately before or after planting. This is the most essential work next to planting, and the lack of severe trimmings is why many do not succeed. Do not be afraid that you are going to trim your trees too severely. Peach trees require more severe trimming than anything else. By the accompanying drawing we endeavor to show how a young tree should be trimmed and planted. Trim the young tree the way you want it to grow.

If a low headed tree is preferred, cut back the top, leaving such limbs as you may want.



In the drawing we have shown the most popular way of trimming young trees. This generally gives a medium height tree very well formed. The cross lines marked "A" on the limbs show where the cut should be made. The two lower limbs are too low to be left on, and should be cut off close to the trunk as marked by the lines "A." If more attention is given to the planting, trimming and care of nursery stock, the grower will have better results.

"WOOD'S QUALITY"

FOR THOSE WHO WANT THE BEST—We have made it our business for over forty-nine years to please the public and give them the very best we could produce in the way of plants, vines and trees. Fruit growers who have seen our big blocks of Apples, Peaches, Pears, Cherries, etc., say they are the best they ever saw growing. Not only are they large, vigorous trees, full of vitality, but they are true to name, which is one of the most important things in connection with tree growing.



OUR TWO-YEAR-OLD BLOCK OF SOUR CHERRY TREES

CHERRY TREES

THE CHERRY, being a very hardy tree, will thrive nearly on any good soil, but does best in a warm, dry, sandy, gravelly or clay loam. The most important thing is to have the soil dry; no other fruit is so greatly injured by excessive moisture as is the Cherry.

The Cherry is one of the most profitable, if not the most profitable, of all the fruits that are grown. More and more the fruit growers of the country are taking up its culture and enormous profits are being realized from young orchards.

This variety of fruit tree requires so little care and cultivation that there is practically no cost of labor to keep up an orchard. Hence greater profits from the fruit.

Cherries are divided into two classes, sweet and sour. The sweets attain a larger size than the sour, but are not as hardy and are more likely to be injured by severe Winters and are harder to transplant.

PRICES OF SOUR CHERRY TREES

	All Budded on	French	Stock		Each	Ten	Hundred
	Height	Caliper	Grade				
Largest Size—2 Years—	5 to 6 ft.	3/4" and up	XXX		\$.75	\$6.50	\$40.00
Medium Size—2 Years—	4 to 5 ft.	5/8" to 3/4"	XX		.65	5.50	30.00
Smaller Size—2 Years—	3 to 4 ft.	1/2" to 5/8"	X		.40	3.00	15.00
P. Post Size—2 Years—	3 ft.	First class trees sent by parcel post.				Postage paid, 50c each;	\$4.50 per ten.
Extra Large Size—3 Year trees—							\$1.00 each; \$8.50 per ten.

Montmorency—A beautiful, large, red sour Cherry. The fruit is clear, bright red and of good size. Flesh is of fine quality, sub-acid. The trees are clean growers and prolific bearers. No matter how unfavorable the season may be, Montmorency can be depended upon for a full crop. It is a good shipper, very attractive looking and always brings good prices. The canning factories use large quantities of them and the demand is greater than the supply. Fruit ripens ten days later than Early Richmond.

English Morello—Best late sour Cherry, very dark red color, sometimes nearly black. Tree is small grower. Fruit ripens about two weeks later than Montmorency.

Early Richmond—One of the most valuable and popular Cherries for cooking purpose. A good old variety that yields marvelous crops in the garden. This hardy Cherry fruits on young trees soon after planting. Early Richmond is a great favorite throughout the West and Northwest, where only hardy varieties succeed. The tree is a free grower; hardy, healthy and very productive. Hundreds of tons of Early Richmond Cherries are now used in making Cherry wine. This is a new market for Sour Cherries which will keep the price of Cherries up. Some growers got ten to twelve cents per pound for their crop last year.



Napoleon or Royal Ann—A Fine Yellow Cherry

Sweet varieties of Cherries succeed best in sandy or gravelly loam, well drained. Avoid low or wet ground. They make large pyramidal trees. Sweet Cherry trees are harder to transplant than sour varieties.

PRICES OF SWEET CHERRY TREES

All Budded on French Stock

	Height	Caliper	Grade	Each	Ten	Hundred
Largest Size—2 Years—	5 to 7 ft.	3/4" and up	XXX	\$1.00	\$ 9.00	\$75.00
Medium Size—2 Years—	5 to 6 ft.	5/8" to 3/4"	XX	.90	8.00	65.00
Largest Size—1 Year—	4 to 5 ft.	Sturdy Buds	XXX	.90	7.50	60.00
Extra Large Size—3 Year trees			XXXX	1.25	10.00	

Gov. Wood—One of the finest of the light colored Cherries. Fruit large, tender, juicy, of fine quality. Tree is vigorous, productive and best shaped of all Cherries. Fruit ripens in June and hangs well on the tree.

Schmidt's Bigarreau—The fruit is of very large size, of a deep mahogany color. The flesh is dark, tender, very juicy, with a fine rich flavor. Fruit grows in clusters. It is an excellent shipper and brings good money on the market.

Windsor—The standard of excellence. It was brought over from Canada, where it originated and is a very hardy, very vigorous and prolific bearer. The fruit is large, liver-colored and very handsome. The flesh is remarkably firm and of fine quality. It is the most valuable late sweet Cherry for family or commercial use.

Napoleon or Royal Ann—This is one of the largest and best of all sweet Cherries. It is a magnificent variety, large, sweet, pale yellow with a bright red cheek. It is a splendid shipper and fine for canning. To eat out of the hand it is unsurpassed. Flesh is very firm and juicy. Tree is a fine grower and immense bearer.

Black Tartarian—Large, black, heart-shaped, tender, juicy Sweet Cheery of surpassing quality. Tree is upright, dense grower, remarkably vigorous, regular bearer of immense crops.

WHY NOT BUY MORE FRUIT TREES?

How many dollars a year do you spend for fruit—either fresh or in cans?

Did you ever stop to think that one-tenth that sum invested in a few trees, would give you many times the amount of fruit you buy—and keep on giving it to you, year after year?

If you have ground enough for a fair-sized garden, you have room enough for fruit. A single tree will yield from 50 to 150 quarts of fruit. We have seen 20 16-quart baskets taken from a single tree, under regular commercial culture. A good young apple tree will give from two to four barrels of fruit.

Fruit trees require so little care, as compared to vegetables, that your whole home orchard will not take many hours work during the entire year.

You can grow as fine peaches and apples as sold anywhere.



A three-year-old Pear orchard—Trees planted by Mr. Wm. Powley of Lyndonville, N. Y.
All "Wood's Quality" Trees

STANDARD PEAR TREES

OUR PEAR TREES ARE ALL BUDED ON IMPORTED FRENCH STOCK
WHICH GIVES THEM THE FINEST ROOT SYSTEM

PRICES OF ALL VARIETIES OF STANDARD PEAR TREES

	Height	Caliper	Grade	Each	Ten	Hundred
Largest Size—2 Years—	5 to 7 ft. 3/4"	and up	XXX	\$.85	\$7.50	\$70.00
Medium Size—2 Years—	5 to 6 ft. 5/8"	to 3/4"	XX	.75	6.50	60.00
Smaller Size—2 Years—	4 to 5 ft. 1/2"	to 5/8"	X	.65	5.50	50.00

P. Post Size—First Class—3 ft. trees sent by parcel post, postage paid, 65c each; \$5.50 per ten.

Extra Large Size—Three and four-year-old trees, \$1.00 each; \$9.00 per ten.

Bartlett—The best and most popular of all Pears for market and home use. It is a rich golden-yellow color when ripe, often with a soft blush on sunny side. It is very large, thin skinned; flesh buttery and melting, and has a rich musky flavor. The tree is a strong grower and bears young and abundantly. It requires careful cultivation to get the best results. Fruit should be thinned when small and should be picked just before it is ripe. Then it should be wrapped in paper, packed in tight boxes and placed in a cool cellar until ready for use. Season, August and September.
See Colored Plate page 17.

Clapp's Favorite—Very large size; pale lemon-yellow color, with a bright crimson cheek. The flesh is finely grained, juicy, melting and buttery. Earlier than Bartlett. August and September.

Sheldon—This is of very large size. It is roundish in shape and has a greenish-yellow color, covered with light russet. It is very juicy, melting, and has a tasty flavor. The tree is a fine grower and a good bearer. Season is October and November.

Seckel—Our most highly flavored Pear, the standard of excellence. Fruit small, yellowish-brown, with a russet-red cheek; flesh very juicy, melting, aromatic, with a rich, spicy flavor; quality very best. September and October.

Flemish Beauty—A pale yellow Pear almost covered with light russet, which becomes reddish-brown when ripe. The fruit is large, melting, sweet and rich. September and October.

DWARF PEAR TREES

BUDED ON IMPORTED FRENCH QUINCE STOCK, WHICH GIVES THEM THE FINEST ROOT SYSTEM

The dwarf varieties of Pears require less than one-fifth the space necessary for the standard varieties. The trees are low-headed and the fruit is easily handled, and comes into bearing usually the second or third year. The trees should be planted three inches below the bud.

PRICES OF ALL VARIETIES OF DWARF PEAR TREES

	Height	Caliper	Grade	Each	Ten	Hundred
Largest Size—2 Years—	3 to 4 ft.	5/8" and up	XXX	\$.75	\$6.00	\$50.00
Medium Size—2 Years—	2 to 3 ft.	1/2" to 5/8"	XX	.60	5.00	40.00
P. Post Size—2 Years—First Class trees sent by parcel post, postage paid, 60c each; \$5.00 per ten.						



Three-year-old Dwarf Duchess

Duchess—The most popular of all dwarfs and the one most widely grown. Duchess is a great yielder and a great money getter. The tree is hardy and thrifty and bears uniformly big crops. It is a very early bearer, sometimes fruiting the first season after planting. The fruit is very large, frequently weighing a pound; dull greenish-yellow, spotted with russet; flesh white, rich and of good quality. A very valuable Pear for the home garden or commercial orchard.

Bartlett—Dwarf Pears are similar to the standard fruit of the same variety, and are very profitable.

Clapp's Favorite—This is a very good dwarf variety which is used extensively for fillers in orchards, mainly Apple orchards.

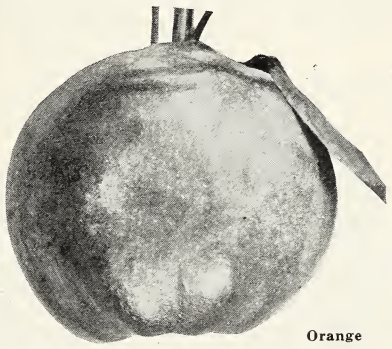
Seckel—This variety is valuable, both as a standard and dwarf. Fruit is the same on either tree. This makes a good filler for an Apple or standard Pear orchard.

Quince Trees

	Each	Ten	Hundred
4 to 5 ft. XXX grade	\$1.00	\$8.50	\$75.00
3 to 4 ft. XX grade	.85	7.00	60.00
2 to 3 ft. X grade	.75	6.00	50.00

Mail Size, 75c each; 3 for \$2.00
5 trees at 10 rate; 50 at 100 rate

EXTRA LARGE SIZE TREES
\$1.00 each; \$9.00 per ten



Orange—More largely planted than any other variety. Orange is large, bright golden-yellow. Cooks very tender and has a fine flavor.

Cadiz, O., R. D. 3, Box 23

Mr. Allen L. Wood.

Dear Sir—My trees arrived in good condition. They were all O. K., good size, well rooted and I am very well satisfied.

Respectfully,
JOHN L. ANDERSON.

(Signed)

Satisfied Customers Are Our Best Advertisers

Here are only a very few of the many unsolicited letters we have received from our customers testifying as to the quality of our stock, prompt attention in filling orders, and fair dealing. Read them:

Loveland, O.

Dear Mr. Wood—I bought fruit trees and hedges from you three years ago. I never lost a tree or a hedge. Picked a few cherries the first year, the second year I canned plums off my plum trees. I am proud of my little orchard.

Yours truly,
MRS. P. UNSER.

273 Dundee Ave., Elgin, Ill.

Mr. Allen Wood—Received the Butterfly Bushes for which I want to thank you. They were fine and healthy looking. I received three from another Nursery which looked like two cents after yours came. You will hear from me again for orders. As a member of the Elgai Garden Club I will tell the ladies of your fine stock.

Yours truly,
MRS. F. W. JENCKS.

Warren, Ohio, May 1, 1924

Mr. Allen L. Wood.

Dear Sir—About thirty years ago I bought trees from you, and have bought a good many since, and in all that time I never received any that were not true to name.

I am sending you a small order for dwarf pear trees, which kindly fill as soon as possible.

Very truly yours,
GEORGE RICHARDSON.

Auburn, N. Y., April 16, 1924

Mr. Allen L. Wood, Rochester, N. Y.

Dear Sir—Received the syringa all O. K. in fine condition. Thank you very much for sending me such a fine shrub. Hope next time to give you a larger order.

(Signed) CHARLOTTE GREEN.

Maumee, O., April 29, 1924.

My dear Mr. Wood—I have been rather negligent in acknowledging the last shipment of trees. I can't tell you how much I appreciate the fine treatment which I have received from you and you can depend upon it I am giving you a boost whenever I get the opportunity.

Every tree in the last shipment was fine and I feel that I can't say too much in favor of your nursery. Many thanks and best wishes.

(Signed) Cordially yours,
E. E. RICHARDSON.

East Greenwich, R. I., April 30, 1924

Dear Sir—I received the box of trees Monday the 28th., came thru all right and am well satisfied with the lot. My neighbors say they never saw a better root system on young trees. I thank you for the fine stock with the hope of future deals sometime. I remain,

(Signed) Yours truly,
BRADFORD M. FISKE.

Canton, Me., May 5, 1924

Woodlawn Nurseries, Rochester, N. Y.

Dear Sirs—I received the shipment of your goods a week or more before I received the letter of notification.

My small order was carefully filled and the stock in fine condition. Am very much pleased with it.

I cultivate about half an acre which is the property of the church I serve. In the past few years I have been here, I have brought an Eden into being where nothing but grass grew. Will need a little stock each year.

(Signed) Yours truly,
REV. FRANK M. LAMB.

Syracuse, N. Y., April 25, 1924

Mr. Allen L. Wood,
Woodlawn Nurseries, Rochester, N. Y.

Dear Sir—My order of stock received last Sat. in good shape and was well pleased with the quality of same, as they seemed fresh and all well rooted.

Your booklet was not received until Monday as the Express beat you out.

Earlier Sunday was quite stormy here with snow and rain. Got the stock all in fine shape for I have had considerable experience in setting out various kinds of trees and plants, and I trust for good results, so did not wait for the instructions.

Thanking you for your promptness, I remain,

(Signed) Yours very truly,
F. C. AINSLEE.

Norwalk, O., May 28, 1924

Dear Mr. Wood—Received my plants all O. K. and am very much pleased with them. Wish to say that they are the finest and healthiest bushes I have ever seen. The roots are plentiful and your packing is excellent.

I also advise my friends and neighbors to buy your stock as I cannot say too much in praise of your Nursery stock.

(Signed) Yours truly,
MRS. GEO. PAUL HUTH.

Milford, N. H., May 5, 1924

Woodlawn Nurseries, Rochester N. Y.

Gentlemen—The fruit trees reached us in good condition and are fine little trees. I am pleased with them and shall certainly tell others about them.

Shall order from you again when in need of more trees.

Thanking you, I am

(Signed) Yours truly,
W. B. REYNOLDS.

Lowell, Mass., April 21, 1924

Allen L. Wood,
Woodlawn Nurseries, Rochester, N. Y.

Sirs—I wish to let you know that I received my order of Nursery stock last week and was well pleased for it reached here in good condition.

Have them all planted and will show them to my friends.

Thanking you for the instruction book.

(Signed) Yours truly,
MRS. ARTHUR E. LAPRISE.

Hornell, N. Y., April 18, 1924

Woodlawn Nurseries,
Mr. Allen L. Wood, Rochester, N. Y.

Dear Sir—I received my trees in good condition a couple of days ago and wish to thank you for them as they appear to be quite healthy and very thrifty.

Another year I expect to set out more fruit and will remember you when I am ready to order.

Hoping these trees grow as I have given them very careful handling in setting them out.

(Signed) Yours truly,
JOHN F. SCHMIDT.

Remsen, N. Y., March 14, 1924

Woodlawn Nurseries, Rochester, N. Y.

Gentlemen—Will you please send me your 1924 catalog. I intend to give you quite a large order this year.

Every tree, shrub and root purchased from you last year grew wonderfully. My dahlias had the admiration of all passersby.

(Signed) Respectfully yours,
MRS. R. C. JONES.



ONE OF OUR BLOCKS OF TWO-YEAR-OLD APPLE TREES

WE GUARANTEE ALL OUR STOCK TRUE TO NAME
(SEE ORDER BLANK)

WOOD'S RELIABLE APPLE TREES

PRICES OF ALL VARIETIES OF 2 YEAR OLD APPLE TREES

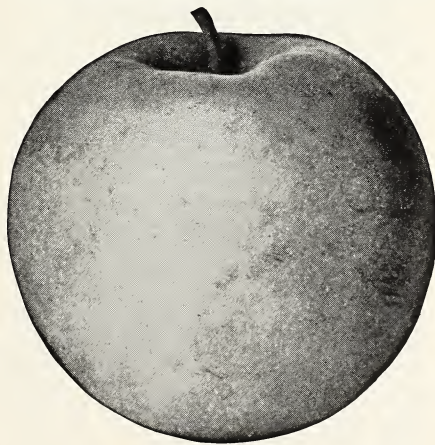
	Height	Caliper	Grade	Each	Ten	Hundred
Largest Size—2 Years	6 to 7 ft.	3/4" and up	XXX	\$.75	\$6.50	\$50.00
Medium Size—2 Years	5 to 6 ft.	5/8" to 3/4"	XX	.65	5.50	40.00
Smaller Size—2 Years	4 to 5 ft.	1/2" to 5/8"	X	.50	4.00	30.00
Extra Large Size—Three and four-year-old trees, \$1.00 each; \$9.00 per ten.						



XXX XX X
WOOD'S QUALITY APPLE TREES

SUMMER VARIETIES

Early Harvest—Medium size, pale yellow.
Red Astrachan—A very handsome summer variety, rather acid in flavor.



Yellow Transparent

Yellow Transparent—Earliest Apple, pale yellow; mild, yet of sprightly flavor; good quality. Bears abundantly very early.

DO NOT OVERLOOK NEW RED SPY APPLE PAGE 16

WOODLAWN NURSERIES



One of our large blocks of 250,000 one-year-old Apple trees; all budded on French Apple seedlings

PRICES OF ALL VARIETIES OF 1 YEAR OLD APPLE TREES

	Grade	Each	Ten	Hundred
Largest Size—1 Year—4 to 5 ft.	XXX	\$.65	\$5.50	\$40.00
Medium Size—1 Year—3 to 4 ft.	XX	.50	4.00	30.00
P. Post Size—1 Year—3 ft. Postage Paid.40	3.50	

REMEMBER WE CAN FURNISH YOU EITHER 1 YEAR OR 2 YEAR APPLE TREES

AUTUMN VARIETIES

Duchess of Oldenburg—Red striped; tender and juicy. The fruit brings a high price on the market.

Fall Pippin—Very large; yellow, tender, juicy and rich.

Fameuse (Snow Apple)—One of the finest dessert fruits. Tender and delicious.

Wealthy—Medium, roundish; skin mostly covered with dark red; flesh white. A variety of great value on account of its hardiness. See colored plate page 17.

WINTER VARIETIES

Baldwin—Leading commercial variety in the orchards of New York, Pennsylvania and Ohio. The standard fruit in the American markets and one of the leading Apples used in cold storage for the export trade. Large, red, winter Apple and very desirable on account of size, color and quality. Fruit keeps in common storage until April.

Delicious—Fruit large, nearly covered with brilliant dark red; flesh finely grained, crisp and melting, juicy with a delightful aroma; of very highest quality. A splendid keeper and shipper.

McIntosh Red—A very attractive Apple, deep red color; uniform size. Flesh white, firm, crisp and tender. Season, October until May. Vigorous grower; bears within four or five years. McIntosh brings a good price on the market and makes a profitable investment for the fruit grower.

See colored plate page 17.

Grimes Golden—Beautiful, rich, golden-yellow Apple with flesh that is tender, juicy.

King—A superb red Apple of the largest size and finest quality.

Northern Spy—The fruit is large and attractive, being of a bright red color. Flesh is very juicy, crisp and tender. This variety ranks about third in commercial importance.



“Wood’s Quality” Jonathan Apple Trees planted four years ago by Wm. Powley, Lyndonville, N. Y.

Jonathan—Is of the Spitzenburg class. Very beautiful, brilliant red color, highly flavored, excellent quality for either dessert or culinary use. Excels its parent in hardiness, productiveness, health and vigor; comes into bearing young, requires fertile, well tilled soil. Flesh is whitish, often tinged with red. Brings a fancy price at holiday season.



A small portion of an Apple Orchard of 800 "Wood's Quality" Trees of Baldwin, Wealthy and Duchess of Oldenburg, planted by Mr. Wallace, of Middleport, N. Y.

North Western Greening—Hardy and vigorous variety. Strong grower, productive and reliable cropper. Fruit large, greenish-yellow, juicy and sub-acid.

Rhode Island Greening—Is the highest quality, ranks next in popularity to Baldwin.

Rome Beauty—A large, smooth, uniform sized Apple beautifully shaded and striped with red. It is an annual bearer.

Smokehouse—Fruit medium to large, uniform size and shape. Color yellow or greenish mottled with rather dark red.

Stark—Large, striped yellow and red, juicy, mild sub-acid. An early and abundant bearer.

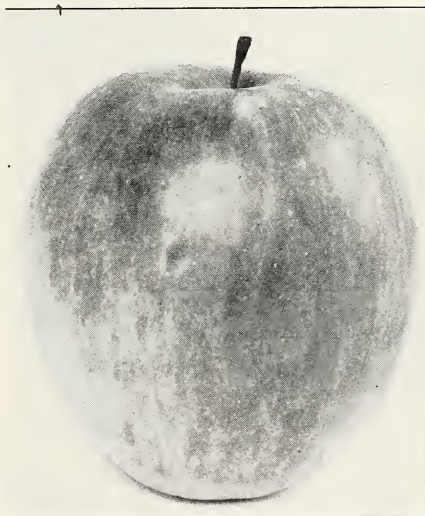
Stayman's Wine Sap—Tree vigorous, hardy, spreading. An early bearer and very productive; fruit medium size, round, approaching conic; skin smooth, greenish-yellow, splashed and striped with red and purple; flesh yellow, firm, tender, juicy, rich, sub-acid, aromatic, quality best. Splendid late keeper.

Tolman Sweet—Splendid sweet winter Apple. Yellow in color, with faint bluish cheek.

Wagner—A superior Apple. Color beautiful bright red with some contrasting pale yellow. Has fine texture, high flavor and excellent quality. Desirable for culinary use, is especially esteemed for dessert. It is a good grower, bears at an early age, and is a reliable cropper. Planted a great deal as a filler for orchards.

Winter Banana—Fruit large, clear pale yellow with beautiful contrasting pinkish-red blush. Flesh yellowish-white, tender, mild and sub-acid; flavored like a banana. Excels as a dessert Apple. Bears early. See colored plate page 17.

Woodlawn Golden Pippin—Is one of the very best varieties. The Apple is golden yellow with a delicious flavor. The flesh is firm, crisp and juicy. It is the best Apple for baking that can be grown.



Ohio Beauty

One of the Finest Apples in the World.

Ohio Beauty—The Ohio Beauty Apple is exceptionally large, uniform in size and shape. Skin smooth; color yellow or greenish-blush, striped with red; flesh slightly tinged with yellow; crisp, tender, aromatic, juicy and sub-acid, which makes it a fine eating and cooking apple. Season, December until April. We have the exclusive sale of "Ohio Beauty." See colored plate page 17.

	Each	Ten	Hundred
5 to 7 ft. XXX grade	\$1.00	\$8.50	\$75.00
4 to 5 ft. XX grade	.85	7.50	60.00
3 to 4 ft. X grade	.65	5.00	40.00

Mail Size 65c each; 3 for \$1.75
5 trees at 10 rate; 50 at 100 rate

EXTRA LARGE SIZE TREES
THREE AND FOUR YEARS OLD

\$1.50 each; \$12.00 per ten

EVERY ORCHARD SHOULD INCLUDE THE RED SPY PAGE 16

Red Spy Apple, Offshoot of Northern Spy, Grown at Geneva Experiment Station, Has Perfect Coloring

— WHAT THEY SAY —

A typical Northern Spy apple with a solid, bright red color without stripes or splashes, grown on the grounds of the New York Agricultural Experiment Station at Geneva, is attracting much attention among fruit growers and is declared by all those who have seen it to be the handsomest spy ever seen. Scions of the Red Spy were received by the station horticulturists in 1910 from C. E. Green, of Victor, but the trees did not fruit until 1920. The color of the fruit is the only difference to be noted between this new sort and its parent.

"Whoever grows Northern Spy, either for profit or pleasure, should try Red Spy," says the station horticulturist. "It is true that the new variety has the serious fault of the parent, that of coming in bearing late, but there are many good characters to offset this fault. Thus, there are delectable quality and great beauty in the fruits, and in the tree hardiness, healthfulness, productiveness, and reliability in bearing to commend two varieties. Nor should it be forgotten that the trees are long-lived, nearly perfect orchard plants, and that they bloom late, thereby often escaping late spring frosts which ruin the crops of other varieties. Northern Spy is still one of the best apples for New York, and Red Spy, with its beautiful fruits, will give life to this sort."

WOODLAWN NURSERIES are the first to offer this valuable Apple.
See colored plate page 17. Two year Trees \$1.00 each

Dwarf Apple Trees

Dwarf Apple Trees come into bearing much earlier than the Standard trees. Their low, broad heads are within reach so that the fruit can be easily picked from a step-ladder.

Dwarf Apples under good cultivation will commence to bear fruit the second year after being planted.

These trees take up so little room that they can be planted six to eight feet apart in the garden or on the lawn. It is a great thing to be able to grow apples on a city lot.

The fruit is of extra high quality. Dwarf Apples are all budded on Paradise stock imported from France.

We have the following list of best varieties of Dwarf Apples to offer:

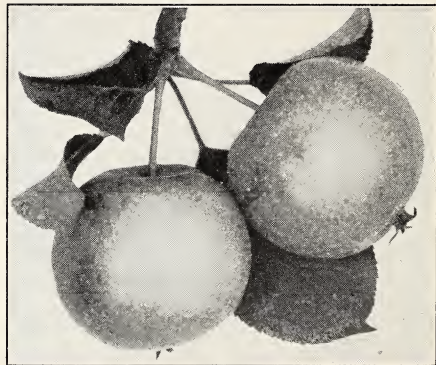
- | | |
|---------------|--------------------|
| Baldwin | R. I. Greening |
| Delicious | Stayman Winesap |
| McIntosh | Yellow Transparent |
| Red Astrachan | |

Prices of all varieties of DWARF APPLES

	Each	Ten	Hundred
3 to 4 ft. XXX grade	\$.75	\$6.50	\$50.00
2 to 3 ft. XX grade	.65	5.50	40.00

Crab Apple Tree

Price of Crab Apple Trees
Same as Apple Trees



Hyslop

Hyslop—Large, dark red, flesh yellow, sub-acid. Very productive and hardy. Excellent for making fine jellies and preserves.

Pacific Grove, Cal., May 8, 1924

Mr. Allen L. Wood, Rochester, N. Y.

Dear Sir—The Apple and Pear trees arrived in A-1 condition after coming thousands of miles. The moss and packing was nice and damp when received. Thanks for the booklet.

Yours truly,
JAMES BRAY.



WINTER
BANANA
APPLE

WEALTHY APPLE

McINTOSH

BARTLETT
PEAR

OHIO
BEAUTY
APPLE

RED SPY

**WOOD'S QUALITY STOCK
ALL XXX GRADE**

	Each
Winter Banana Apple . . .	\$.75
Wealthy "75
McIntosh "75
Ohio Beauty " . . .	1.00
Red Spy " . . .	1.00
Bartlett Pear " . . .	1.00

See pages 9, 13, 14, 15 and 16



**WILMA
NEW LATE PEACH**

WOOD'S CHOICE PEACHES

NEW WILMA PEACH IS REPORTED AS ELBERTA RIVAL

Geneva Station Says, Wilma, Yellow-fleshed Variety Fills Long Felt Need.

Geneva, March 30—The new peach for which fruit growers of New York State have been looking has been discovered in the Wilma, a yellow-fleshed variety that will rival the favorite Elberta, say horticultural experts at the New York State Agricultural Experiment Station here. The new variety gains double favor by ripening a week following the Elberta season.

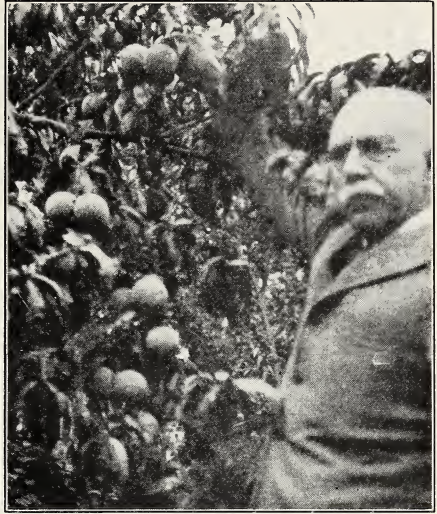
Wilma was developed by W. C. Rofkar of Port Clinton, Ohio, but its production is admirably suited to the state. The trees are vigorous, productive, and hardy enough to withstand the coldest Winter recorded in half a century in New York State.

The fruit is as large as Elberta, about the same color, and of better quality, says the local station. It is destined to become a strong favorite in the peach industry of this state, say the horticulturists.

Our stock of Wilma is limited. See colored plate page 18.

Prices of Wilma Peach

		Each	Ten	Hundred
4	to 5 ft. XXX grade	\$1.00	\$8.50	\$75.00
3	to 4 ft. XX grade	.85	7.50	65.00
2½	to 3 ft. X grade	.75	6.50	50.00



A 16-YEAR OLD DR. WORCESTER PEACH TREE

This Photograph of Dr. Worcester and one of his famous Peach trees was taken about a month before the fruit was fully ripened.

"DR. WORCESTER"

"The 20th Century Peach"

The DR. WORCESTER Peach is of a very large size, and the color is a beautiful golden yellow, overlaid with red. The flesh is yellow, firm and juicy, and the flavor, which is its chief merit, is rich and sweet. The skin is firm, making it a good shipper and keeper. The tree is hardy and a late bloomer, so late frosts seldom injure it, and it is a healthy, vigorous grower and good bearer. These qualities make the DR. WORCESTER Peach a most valuable commercial variety.

For the past two years we have refused several hundred orders for the Dr. Worcester Peach, and refunded several hundred dollars after we were sold out. We have the exclusive sale of "DR. WORCESTER" Peach trees, and each tree or bundle of trees we sell has a special Guarantee Seal attached to it.

PRICES OF DR. WORCESTER PEACHES

		Each	Ten	Hundred
4	to 5 ft. XXX grade	\$1.00	\$8.50	\$75.00
3	to 4 ft. XX grade	.85	7.50	65.00
2½	to 3 ft. X grade	.75	6.50	50.00

5 trees at 10 rate

Mail size, 75c each; 3 for \$2.00

EXTRA LARGE SIZE TREES

\$1.25 each; \$10.00 per ten



The above cut shows how to wire up a Peach tree to keep it from breaking down when heavily laden with fruit

WOOD'S QUALITY PEACH TREES

BUDED FROM BEARING TREES

PEACH growing is today a great industry and there are a great many young orchards being planted throughout the country. The ease with which these trees may be cultivated, their freedom from disease, the short period before they become productive, together with the immense demand for the fruit and the facility with which it may be shipped to markets, make Peach growing extremely profitable.

To secure healthy, vigorous and fruitful trees, the ground must be kept clean and mellow, and should receive an occasional dressing of wood ashes.

To keep the trees in good shape, it is necessary that they should be pruned yearly, all the dead and useless wood cut out and light and air let in.

OUR PEACH TREES BUDED FROM BEARING ORCHARDS

The Peach trees we are offering are EXTRA nice, well-rooted trees. They are propagated on seedlings produced from natural seed gathered in the mountains of North Carolina and are budded from bearing trees. They are absolutely TRUE TO NAME, FREE FROM DISEASE and make the HEAVIEST BEARING ORCHARDS.

Peach Yellow and San Jose Scale have never been found in our Nurseries.



Side view of an Elberta Peach Orchard, owned by Mr. Dudley Watson, Medina, N. Y. Trees purchased from "Woodlawn Nurseries." Each tree yielded 5 to 8 bushels of fruit when it was six years old.

PRICES OF PEACH TREES

	Height	Caliper	Grade	Each	Ten	Hundred
Largest Size—1 Year—	4 to 6 ft.	9/16" and up	XXX	\$.50	\$4.50	\$25.00
Medium Size—1 Year—	3 to 4 ft.	7/16" to 9/16"	XX	.40	3.50	20.00
Smallest Size—1 Year—	2½ to 3 ft.	5/16" to 7/16"	X	.30	2.50	15.00

Extra Large Size—1 Year—75c each; \$6.00 per ten.

P. Post Size—1 Year—First class trees sent by parcel post, postage paid, 30c each; \$2.50 per ten.

Elberta—Greatest commercial peach on the market; variety most popular all over the country; undoubtedly best orchard kind and valuable for garden planting. Large, yellow, red cheeked, juicy and highly flavored. Freestone.

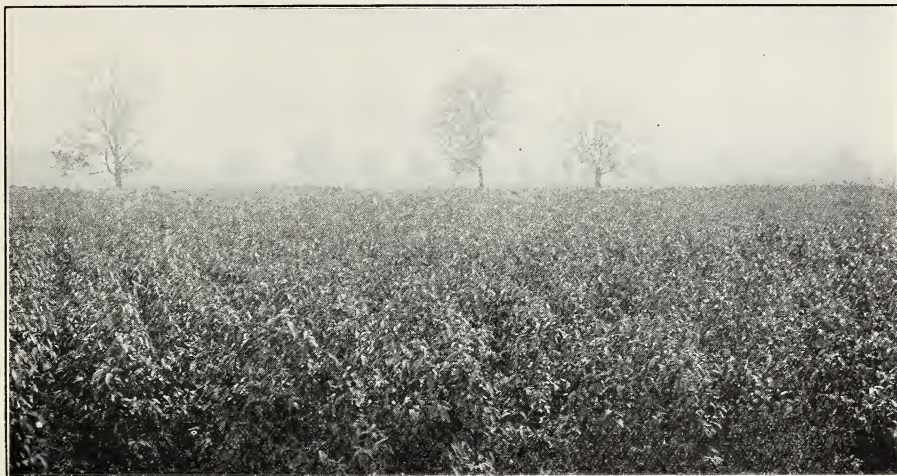
Champion—Fruit large, handsome; creamy white with red cheek; sweet, rich, juicy; freestone; good shipper, hardy and productive. Last of August.

Niagara—Fruit is a beautiful golden-yellow blushed with brilliant red. Resembles the Early Crawford very much, but is larger in size. We recommend this variety as one of the best for the garden.

Early Crawford—It seems unnecessary to describe this fine old variety. Its large size, fine, rich yellow color, with red cheek and the high quality of its rich yellow flesh, have made it the basis for comparison in excellence of all varieties which conform more or less to its chief characteristics. The Crawford "type" of Peach is so well recognized in the market that those which come later and are of this general type of Peach have succeeded best as commercial varieties. September.

Late Crawford—Fruit is of the largest size; skin yellow or greenish-yellow, with dull red cheek; flesh yellow; productive and one of the finest late sorts. Last of Sept.

WILMA PEACH OFFERED ON PAGE 19 IS EXTRA FINE



Picture of one of our blocks of 150,000 Peach trees taken in August, at which time they had about ten more weeks to grow. Budded on natural seed from the Mountains of North Carolina. Free from disease. Our guarantee to be absolutely TRUE TO NAME, on every order blank.

Woodlawn Golden—New variety; fruit large, highly colored; flesh yellow, firm and juicy; fine for canning and eating. Strong grower and very productive. Freestone. September.

Hale—Fruit $\frac{1}{2}$ larger than Elberta and about 5 days earlier; skin deep crimson, smooth, tight without fuzz; flesh golden yellow, firm with delicious flavor. Good keeper and shipper, an exceptionally good commercial peach.

Carman—Large, resembles Elberta in shape; creamy white with deep blush; skin tough; flesh tender, juicy and highly flavored. Early, hardy; prolific bearer and good market variety. August.

Rochester—Freestone. Fine quality, ready for market middle of August in the northern states. Fruit large, yellow; red cheeked; juicy and delicious; exceptionally sweet. Strong grower and absolutely hardy.



"Wood's Quality" Trees planted by Mr. T. Merchant, Middleport, N. Y. Each tree yielded from five to eight bushels of fruit the sixth year after planting.

BEFORE ORDERING READ INFORMATION ON PAGE 6



One of our large blocks of Wood's Quality Plum Trees Budded on French Plum Stock

WOOD'S QUALITY PLUM TREES

BUDED ON FRENCH PLUM STOCK

	Height	Caliper	Grade	Each	Ten	Hundred
Largest Size—2 Years—	5 to 7 ft.	3/4" and up	XXX	\$1.00	\$9.00	\$80.00
Medium Size—2 Years—	4 to 6 ft.	5/8" to 3/4"	XX	.85	7.50	65.00
Extra Large Size—3 Years—	\$1.25 each; \$11.00 per ten.					



Lombard

Lombard—A great favorite, because it is a wonderfully early bearer, a hardy, strong grower. It is a good variety to eat out of hand and also to can. Lombard is a handsome reddish Plum. Flesh is yellow, juicy.

German Prune—A valuable Plum for dessert, but most esteemed for market and drying or preserving. Fruit long, oval, purple with a thick bloom; flesh firm, sweet and pleasant. A great favorite.

Bradshaw—This is a very large, dark violet-red Plum, very juicy and good. The quality of Bradshaw is very fine and is very popular wherever planted. The tree is erect, vigorous, hardy and very productive. One of the finest for market and canning.

Abundance—One of the most popular of all Japanese varieties. It is favorable everywhere and should be in every collection. The fruit is large, showy and beautiful. It has a bright cherry-red color. The flesh is yellow, firm, juicy, sweet.

Burbank—This variety is very much like the Abundance, except that it is much deeper in color and ripens from ten to fourteen days later. It is one of the most handsome Plums on the market, and always finds a ready sale. The fruit is large, reddish-purple; flesh yellow, juicy and good. August.

Apricot Trees

Two Years XXX Grade, \$1.00 each



Moorpark

Moorpark—One of the largest. Yellow with red cheek, firm, juicy and very productive. An old and dependable variety. August.

WOOD'S GRAPE VINES

ARE TWO YEARS OLD, EXTRA STRONG

Every city and country garden should have a dozen or more Grape vines. They can be trained up the side of any building or along the garden fences, occupying but little room and furnishing an abundance of the healthiest fruit.



Worden

Lucile

Niagara

Concord

FOUR BEST STANDARD GRAPE VINES

Price of Two-Year-Old Vines; (except otherwise noted):

35c each; \$3.00 per 10; \$20.00 per 100

If sent by Parcel Post add 5c each; 25c per 10

Concord—This is the leading black variety and the most widely grown Grape on this continent. Fruit ripens in mid-season with the Niagara. Grape juice is made almost entirely from Concord, and owing to the productiveness of this variety it can be produced so cheaply that no other Grape can compete with it, either for this purpose or as a market variety.

25c each; \$2.00 per 10; \$15.00 per 100

Lucile—Early red variety, ripening between Moore's Early and Worden. It is a vigorous grower and an enormous bearer, which is equal to the Concord or Niagara in this respect; ripens up all its wood to the tips, under a load of fruit where the Niagara would not ripen over one-half. In vigor, health, hardiness and productiveness this variety is not surpassed by any other. It has never been known to winter kill in the Grape region. It will ripen in Maine, also in the Northwest, where other varieties freeze back. Free from fungus; bunches and berries medium to large; skin thin, but tough; bright in color; good shipper and quality is good, with an exceedingly pleasing flavor. Best red Grape known.

35c each; \$3.00 per 10; \$25.00 per 100

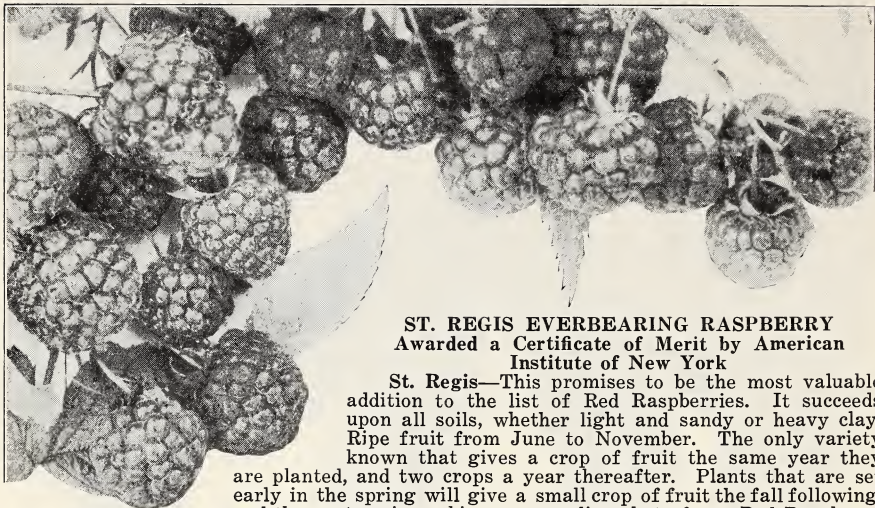
Moore's Early—Bunch medium; berry large, round, black, with a heavy blue bloom; flesh pulpy and of medium quality; hardy and moderately prolific. Its large size and earliness render it desirable.

35c each; \$3.00 per 10; \$25.00 per 100

Agawam—A dark red Grape with fine flavor. Large bunch and berry, rich, sweet and aromatic; strong grower and very productive.

Worden—Bunch large, compact, handsome; berries large—larger than those of the Concord. It ripens a few days earlier and is superior to it in flavor. Destined to become very popular for the vineyard and garden.

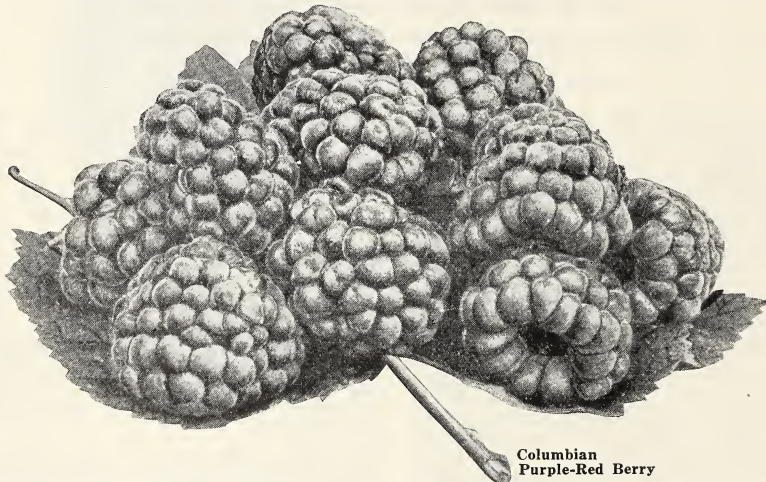
Niagara—This is the leading American white Grape, holding the rank among the Grapes of this color that Concord does among the black varieties. Bunch very large and handsome, often shouldered, compact; berries large, round; skin thin, tough, does not crack and carries well; has not much pulp when fully ripe; melting, sweet. The Niagara makes a handsome and showy fruit, and for this reason sells very readily on the market, commanding a good price.



ST. REGIS EVERBEARING RASPBERRY
 Awarded a Certificate of Merit by American
 Institute of New York

St. Regis—This promises to be the most valuable addition to the list of Red Raspberries. It succeeds upon all soils, whether light and sandy or heavy clay. Ripe fruit from June to November. The only variety known that gives a crop of fruit the same year they are planted, and two crops a year thereafter. Plants that are set early in the spring will give a small crop of fruit the fall following, and the next spring a big crop equaling that of any Red Raspberry known. In size, quantity and quality, to say nothing of its fall-bearing qualities, it is ahead of anything known. About the middle of August it commences to set fruit on the young canes, and bears continuously from then until frost. The berries are large, beautiful and attractive.

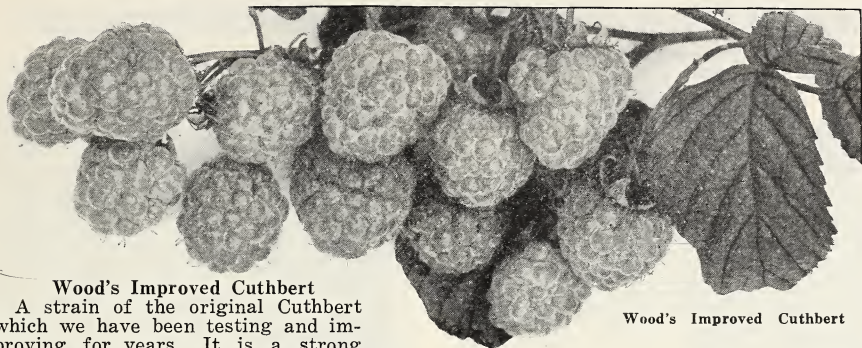
Price—2 for 25c; \$1.00 per 10; 25 for \$1.50; \$4.00 per 100; \$25.00 per 1000
If sent by Parcel Post add 10c per 10; 20c per 25



**Columbian
 Purple-Red Berry**

Columbian—Very large, often an inch in diameter; dark red, bordering on purple; adheres firmly to stem and will dry on the bush if not picked; of rich, sprightly flavor, the best for canning or evaporating, and probably the most productive of all Raspberries. A most vigorous grower, canes ten to fifteen feet in length and often over an inch in diameter, strong and woody, its roots spreading and penetrating the soil to a great depth, thus enabling it to resist drought. It propagates from the tips and never suckers from the roots. It is very hardy, enduring 28 degrees below zero without injury.

Price—2 for 25c; \$1.00 per 10; 25 for \$1.50; \$4.00 per 100; \$25.00 per 1000
If sent by Parcel Post add 10c per 10; 20c per 25



Wood's Improved Cuthbert

A strain of the original Cuthbert which we have been testing and improving for years. It is a strong grower, has healthy foliage, and is very productive if planted on good soil. Cuthbert is one of the old standard, reliable sorts that will give a good crop of large red ber-

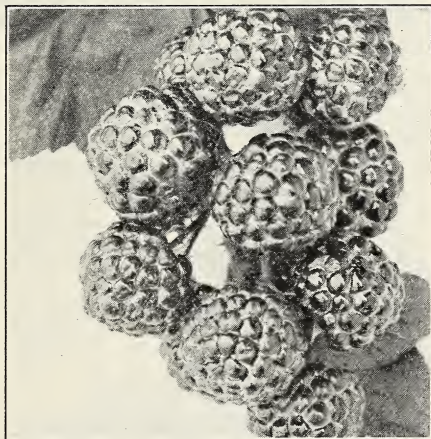
Wood's Improved Cuthbert

ries that are firm and have a rich flavor. Of very fine quality; more largely grown than any other variety. We recommend it for either home use or field culture.

Price—2 for 25c; \$1.00 per 10; 25 for \$1.50; \$4.00 per 100

If sent by Parcel Post add 10c per 10; 20c per 25

BLACK RASPEERRIES



Plum Farmer

Plum Farmer—Has been thoroughly tested in Western New York, where it is a great favorite for market and home use. The fruit is very large, often measuring an inch in diameter. Brings the highest prices on the market.

Price—2 for 25c; \$1.00 per 10; 25 for \$1.50; \$4.00 per 100; \$35.00 per 1000.

Black Diamond—One of the best for home and market use. For drying and evaporating it excels all others. The fruit is large, sweet and excellent.

Price—2 for 25c; \$1.00 per 10; 25 for \$1.50; \$4.00 per 100; \$35.00 per 1000.

If sent by Parcel Post add 10c per 10; 20c per 25.

BLACKBERRIES

Blowers—Giant, upright, mammoth grower, is very hardy and enormously productive. The season of ripening is from the middle of July until frost, with the bulk of the crop maturing in August. A single plant produced over 2,600 berries, and from three-quarters of an acre of land 112 bushels of fruit were picked.

Price—2 for 35c; \$1.25 per 10; 25 for \$2.00; \$5.00 per 100; \$40.00 per 1000.

If sent by Parcel Post add 10c per 10; 20c per 25.



Eldorado

Eldorado—A valuable variety; medium size, jet black, melting, sweet and rich; hardy and very productive.

Price—2 for 35c; \$1.25 per 10; 25 for \$2.00; \$5.00 per 100; \$40.00 per 1000.

If sent by Parcel Post add 10c per 10; 20c per 25.

ASPARAGUS (2 years old)

To make a good Asparagus bed, prepare a plot of fine, loamy soil, to which has been added a liberal dressing of good manure. Set the plants 12 inches apart in the row and the rows 20 inches apart.

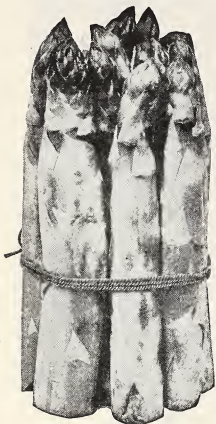
Price, 50c per 10; \$1.00 per 25; \$2.50 per 100; \$15.00 per 1000.

If sent by Parcel Post add 5c per 10; 15c per 25; 25c per 100.

Barr's Mammoth—Robust and vigorous and throws large shoots which remain white above ground as long as they are fit for cutting.

Conover's Colossal—This variety is remarkably tender and finely flavored.

Palmetto—An early and great yielder and very even and regular in growth. It has been tested both North and South and has proved entirely successful in every way.



RHUBARB (PIEPLANT)

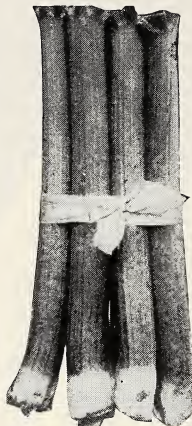
Two-year-old plants

Strawberry Rhubarb all the year

You can have Early Strawberry Rhubarb throughout the entire year. Cut stalks of young Rhubarb into small pieces. Put these into fruit jars. Fill jar with cold water and seal up tightly. This will keep you in fresh Early Strawberry Rhubarb the entire year.

There are a number of different ways of serving Early Strawberry Rhubarb—pies, cakes, sauces, jellies, puddings, etc.

Price of
Two-year-old plants
25c each; \$2.00 per 10; \$15.00 per 100.



Wood's Strawberry Rhubarb

If sent by Parcel Post add 5c each; 25c per 10.

STRAWBERRIES

Price, 50c per 12; \$1.00 per 25; \$2.00 per 100; \$10.00 per 1000

By mail—55c per 12; \$1.10 per 25; \$2.25 per 100

Monroe—We are proud to say that we introduced the "MONROE," which has made a record for itself. The berry is deep red, not red in spots, as on some varieties, but red all around, making it a very handsome fruit. It is finely grained, very firm and red to the core. The flavor of the "MONROE" surpasses that of any other Strawberry.

Parson's Beauty—A good grower and an immense cropper of large, solid berries of good form, bright red and firm, but its chief point of merit is its enormous crop of fruit.

GOOSEBERRIES

PRICE OF 2-YEAR-OLD BUSHES

35c each; \$3.00 per 10; \$25.00 per 100

If sent by Parcel Post add 5c each; 25c per 10.

Pearl—This variety bears a great resemblance to the Downing, but is superior in size and quality. It is very hardy; free from mildew and the most productive of all varieties.

Josselyn—Fruit red, large size, smooth, of best quality. Has been tested over a wide extent of territory by the side of all the leading varieties, and so far is free from mildew, both in leaf and fruit. A wonderful cropper, with bright, clean, healthy foliage.

CURRENTS

PRICE OF 2-YEAR-OLD BUSHES

Except otherwise noted

35c each; \$2.50 per 10; \$20.00 per 100

If sent by Parcel Post add 5c each; 25c per 10.

Wood's Improved Cherry—A strain of the original Cherry which we have greatly improved upon. It is larger, has better bunches, and is a stronger grower. Fruit is large, deep red and sub-acid.

Perfection—Won the Barry \$50.00 Gold Medal of the Western New York Horticultural Society, the Pan-American Exposition Medal, and the Gold Medal at the St. Louis Exposition of 1904. The color is a beautiful bright red; clusters long; large size berries.

Norwalk, Conn.
May 4th, 1924

Mr. Allen L. Wood,
Dear Sir:

Have just received my order in fine condition. Am more than pleased with the stock and your fairness in every way. Will surely speak a good word for you to my friends and hope to send you many orders in the future.

Yours respectfully,
(Signed) Walter L. Fillow.

NEW YORK STATE GROWN NUT TREES



English Walnut

English Walnut—An exceedingly handsome tree for the lawn. It produces large crops of thin shelled, delicious Nuts which are always in demand at good prices. The English Walnut can be grown in the Eastern and Northern States, as well as in California and the South. There are several large orchards of English Walnuts in the vicinity of Rochester, N. Y., which produce good crops every year. We have three English Walnut trees on one of our farms, which are over 40 years old.

1½ to 2 ft. 75c each; \$6.50 per 10

3 to 4 ft. \$1.75 each; \$15.00 per 10



Butternut

Butternut—Produces large, handsome, elongated Nuts with rich, sweet, oily kernel; very nutritious. Cultivation increases the size of the Nuts. The tree grows rapidly and yields large crops in a few years.

4 to 5 ft., \$1.00 each; \$9.00 per 10



Japan Walnuts picked from a six-year-old tree

Japan Walnut—A choice improved variety, grows with great vigor, forming a handsome head without pruning; has withstood a temperature of 20 degrees below zero without injury. The shell is a little thicker than that of the English Walnut, which it resembles in a general way; kernels are meaty, delicate and can be removed entirely. Tree begins to bear when 2 or 3 years old.

3 to 4 ft., \$1.00 each; \$9.00 per 10



Black Walnut

Black Walnut—Bears a heavy crop of large, round Nuts of excellent quality. They are much relished and bring a good price on the market. The tree is a rapid grower, attaining a large size and majestic form; has beautiful foliage. Very valuable for its timber, which enters largely into the manufacture of fine furniture and cabinet ware.

5 to 6 ft., \$1.00 each; \$9.00 per 10

ORNAMENTAL TREES

WELL-KEPT grounds, which necessarily include fine Shade Trees, flowering Shrubs, Vines and Roses, are naturally a great source of pleasure to a property owner. They also greatly enhance the value of property. A relatively small amount invested in ornamentals will bring a big return should you wish to dispose of your property. Nor does it require a big outlay of money to make your property beautiful by such ornamentation. The Trees and Shrubs, etc., of course should not be planted haphazardly. Great care should be exercised in the planting of Shade Trees. All planting ought to be done with reference to the character and position of the house, care being taken not to obstruct sightly views, but unsightly views should be screened.



Avenue of Norway Maples

Norway Maple trees are perhaps the most important feature in the making of a proper planting for a beautiful street. They are recommended by the Shade Tree Commissioners for street and park planting.

- A—Denotes trees which attain 50-70 ft. in height.
- B—Denotes trees which attain 20-40 ft. in height.
- C—Denotes trees which attain 8-15 ft. in height.

Maple, Ash-Leaved or Box Elder (B)—A fine rapid growing variety, with handsome, light green foliage and spreading head; very hardy; desirable for street planting and succeeds in many sections where other varieties do not thrive.

8 to 10 ft. \$1.75 each; \$16.50 per 10
 10 to 12 ft. \$2.50 each; \$24.00 per 10

Maple Schwedlerii (Red Leaved) (B)—An excellent and striking variety. The beautiful leaves attract attention all season, but are especially fine in spring, when their gleaming red and purple contrasts brightly with the delicate green of other trees. Purplish-green in midsummer; golden yellow in autumn.

8 to 10 ft., \$5.00 each

Maple, Norway (A)—The compact, vigorous nature of this tree renders it desirable for the street or lawn. The growth is fairly fast, the head massive and rounded, with broad, rich green foliage. This variety is highly recommended by the Shade Tree Commissioners for street and park planting.

10 to 12 ft. \$3.50 each
 Extra 2 to 2½ in. Caliper 4.00 each

Maple, Sugar or Rock (A)—A native tree valuable for its production of sugar and wood. Very stately in form, rapid grower and has fine foliage. Valuable ornamental variety.
 8 to 10 ft., \$2.00 each; 10 to 12 ft., \$3.00 each

Oriental Plane (A)—A well known tree. Extensively used for street and park planting, especially in cities where there is much smoke.

8 to 10 ft. \$2.00 each; \$17.50 per 10



Silver-Leaved Maples

Maple, Silver Leaved or Soft Maple (A)—Very beautiful ornamental tree, in great demand for street, lawn and park planting. One of the easiest trees to transplant; remarkably fast grower, thrives equally well in well drained or low, swampy locations.

8 to 10 ft. \$2.00 each; \$17.50 per 10
 10 to 12 ft. \$3.00 each; \$27.50 per 10
 Extra 2 to 2½ in. Caliper; \$4.00 each;
 \$35.00 per 10



Wier's Cut-Leaved Maple

Maple Wier's Cut-Leaved (A)—One of the most remarkable and beautiful trees, with cut or dissected foliage. Growth rapid, shoots slender and drooping, giving it habit almost as graceful as cut-leaved Birch.

7 to 8 ft., \$2.00 each; \$17.50 per 10



American Linden or Basswood

Linden, American (B)—Unusual stately beauty. Foliage luxuriant and curious cream colored flowers have a delightful fragrance. Blooms in July. Growth rapid and upright.

8 to 10 ft., \$3.00 each; \$27.50 per 10
 10 to 12 ft., \$4.00 each; \$35.00 per 10



Purple-Leaved Plum (Prunus Pissardi)

Plum, Purple-Leaved (Prunus Pissardi) (B)—Finest purple-leaved small tree of recent introduction. Young branches are very dark purple; leaves when young are lustrous crimson, changing to dark purple, and retain this beautiful tint until they drop.

4 to 5 ft., \$1.50 each



Bechtel's Double-Flowering Crab

Bechtel's Double-Flowering Crab (C)—One of the most beautiful of the many fine varieties of flowering Crabs. Tree medium size, covered in early spring with large, double, fragrant flowers of a delicate pink color. From a distance they have the appearance of roses.

2 to 3 ft., \$1.25 each; 3 to 4 ft., \$1.50 each

Poplar, Carolina (A)—Remarkably rapid, luxuriant grower. Very large leaves, glossy, deep green. Valuable where shade is desired quickly. Useful for planting as a screen to hide unsightly buildings or as a windbreak for an orchard or garden.

8 to 10 ft., \$1.00 each; \$ 8.50 per 10

10 to 12 ft., \$1.25 each; \$10.00 per 10

Mountain Ash (B)—A favorite; erect growing tree of medium size, producing white flowers early in the spring, followed by clusters of bright scarlet berries which remain on the tree through the winter.

10 to 12 ft., \$3.50 each

Flowering Almond—Small tree, vigorous and beautiful; covered in May with double pink blossoms, like small Roses before the leaves appear.

3 to 4 ft., \$1.25 each

Prunus Triloba—Blossoms very early in the spring, before the leaves appear. The small tree is covered with double flowers of a delicate pink.

3 to 4 ft., \$1.00 each

Mulberry, Downing (B)—Berries very large, black and of excellent quality. Should be in every garden. Very valuable when planted near a Cherry orchard, as the birds will eat this fruit instead of the Cherries.

5 to 6 ft., \$1.00 each



Lombardy Poplar

Poplar, Lombardy (A)—Well known for its erect, rapid growth and commanding form. Very desirable on large grounds or along roads, to break the average heights and forms of other trees. May be planted out for a screen to hide unsightly views, or for a windbreak.

8 to 10 ft., \$1.00 each; \$ 8.50 per 10

10 to 12 ft., \$1.25 each; \$10.00 per 10

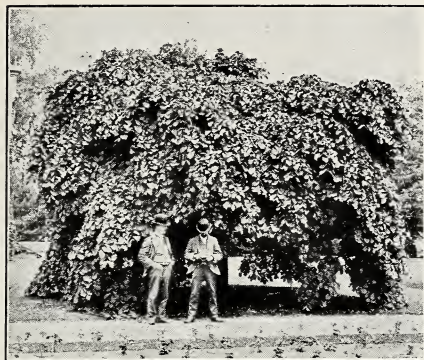


American Elm, Finest Street and Shade Tree

Elm, American (A)—The Elms are so well known that it is unnecessary to refer to their beauty and value for ornamental planting. We grow the American on an extensive scale for street and park planting.

8 to 10 ft., \$2.00 each; \$17.50 per 10

10 to 12 ft., \$2.50 each; \$24.00 per 10



Camperdown Elm

Elm, Camperdown (Weeping Elm) (C)—One of the most graceful of all weeping trees, having large, luxuriant and deep green foliage; well adapted for planting on lawns or in parks or cemeteries; very desirable. A rapid grower. \$3.00 each.

Two-year heads, extra large.

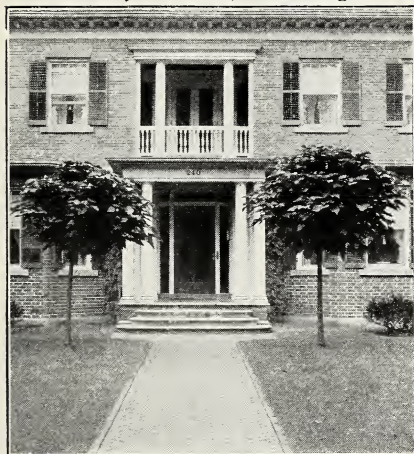


Tea's Weeping Mulberry

Mulberry, Tea's Weeping (C)—One of the finest, most graceful and satisfactory of weeping trees. Umbrella shaped head, with slender, willowy branches drooping to the ground. It has beautiful, glossy foliage, handsomely cut or divided into lobes. Perfectly hardy. \$3.00 each.

Two-year heads, extra large.

Willow, *Babylonica* (A)—Well known, weeping variety; forms a large, round-headed, graceful tree. It does not require much attention and succeeds well in rather dry soil. Very desirable. 6 to 8 ft., \$2.00 ea.

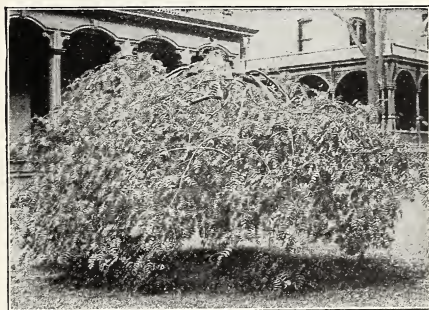


Catalpa, *Bungeii* each side of walk

Catalpa, *Bungeii* (Umbrella Catalpa) (C)—Grafted on stems 6 to 8 ft. high, it makes an umbrella-shaped top without pruning; perfectly hardy. Leaves large, glossy, heart-shaped, deep green. One of the most unique trees; desirable for lawn, park and cemetery planting or for each side of a driveway. \$2.50 each.

Two-year heads, extra large.

Catalpa, *Speciosa* (A)—This medium to large tree with its tropical-like foliage and its pyramids of white flowers is worthy of a place in every collection. It is very ornamental and is a valuable tree for the street or park. 8 to 10 feet, \$1.50 each.



Weeping Mountain Ash

Weeping Mountain Ash (C)—A beautiful variety of rapid growth and decidedly pendulous and trailing habit; covered from July till winter with great clusters of bright scarlet berries. One of the most desirable lawn trees. \$3.00 each.

Two-year heads, extra large.



The planting of Shrubbery, Trees, Vines, etc., makes a wonderful difference in the appearance of a place, as shown in the above picture

WOOD'S ORNAMENTAL SHRUBS

The Shrubs we grow are of the very choicest varieties; extra strong, two and three years old, from two to five feet in height, according to the variety, and will blossom the first season.

If sent by Parcel Post add 5c per Shrub

D—Shrubs which attain 9 to 12 feet in height.

E—Shrubs which attain 5 to 8 feet in height.

F—Shrubs which attain 2 to 4 feet in height.



Althea, or Rose of Sharon

Althea, or Rose of Sharon (D)—The Altheas are fine, free-growing, flowering shrubs and are easy to cultivate. Very desirable on account of blooming in August and September, when scarcely any other tree or shrub is in blossom. We have the following varieties, at 50c each:

Lady Stanley (Double Pink)

Ardens (Double Purple)

Boule de Feu (Double Red)

Jeanne d'Arc (Double White)

Tree Althea—Same as bush, but grown in tree form, with single stem. Colors: Pink, Purple, Red, White. 3 to 4 ft., \$1.00 ea.

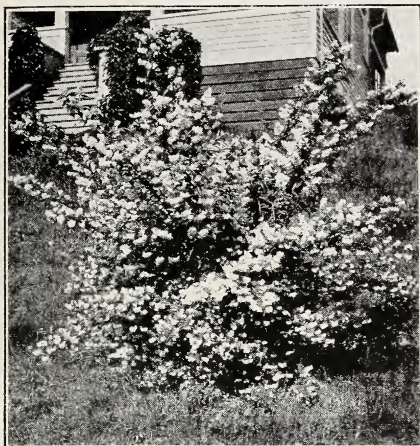


Cornus are very attractive when planted singly, in groups or for massing, being distinguished for their elegant foliage

Cornus, *Elegantissima* (Variegated Leaf) (E)—One of the finest shrubs, with beautifully variegated foliage. 65c each.

Cornus *Sibirica* (E)—(Red twigged Dogwood). With small clusters of white flowers; its blue berries and its dark red bark make it one of the most attractive shrubs. 65c each.

Cornus Red Dogwood (D)—Flowers appear before leaves. Foliage glossy and handsome, turns red in fall. 75c each.



Deutzia, Pride of Rochester

Deutzia, Pride of Rochester (E)—Very large, double, white flowers. It excels in size of flower, profuse bloom and vigorous growth. 50c each.



Deutzia, Gracilis

Deutzia, Gracilis (F)—A charming species of dwarf habit; flowers pure white. Fine for growing in front of taller shrubs. 50c each.

Deutzia, Candida (E)—Pure white flowers, very double. 50c each.

See Colored Page on back of Front Cover.

Deutzia, Lemoinei (F)—Pure white flowers, borne on stout branches of upright growth, free flowering. 50c each.



"Everblooming Butterfly Bush" or "Summer Lilac"

Butterfly Bush, or Summer Lilac (E)—This beautiful shrub matures rapidly and produces beautiful lilac-colored flowers in profusion. Blossoms the entire summer; splendid for cutting. Should be cut back to the ground every spring. 50c each.

See Colored Page on back of Front Cover.

Barberry, Thunbergii (F)—A shrub of bright green foliage, which changes to brilliant red in the fall; bright red berries, which are conspicuous throughout the winter. Very hardy; has never been known to winter-kill. 50c each.

Stephenandra Flexuosa—Three foot shrub, suited for borders. White Flowers. 75c each.



Golden Elder

Elder, Golden Leaved (E)—A handsome variety with golden-yellow foliage, which renders the plants very conspicuous and effective. White flowers. The berries are used for pies, jam and wine. 50c each.



Honeysuckle Tartarica White

Honeysuckle Tartarica White (E)—A well known shrub of erect habit. Valuable for its handsome flowers and showy fruit. Delightfully fragrant; one spray will fill a room with its delicate perfume. 50c each.

Honeysuckle Tartarica Red—A beautiful shrub; vigorous; producing large, bright red flowers, striped with white. 50c each.

Honeysuckle Tartarica Pink (E)—Has flowers which contrast beautifully with the foliage. Looks very pretty planted with the white and red varieties. 50c each.

Honeysuckle Morrowi (E) (Japanese Bush Honeysuckle)—A spreading variety which blooms early, pure white flowers; followed by pretty red berries. 50c each.

Amorpha, False Indigo (D)—Large hairy shrubs, small dark purple flowers in dense terminal panicles in July. 50c each.

Cut Leaved Sumach (E)—A very striking plant, of moderate size, with deeply cut leaves, resembling fern leaves; dark green above and glaucous below, and turning to a rich red in autumn. 75c each.

Tamarix Hispida (E)—A handsome and distinct species with bluish foliage and carmine-rose flowers in September. 50c each.

Quince, Japan (E)—Dark green foliage and showy, deep scarlet flowers of good size, produced singly or in masses along the branches. Much admired and often used for hedges. 75c each.

Willow, Golden—Grown in shrub form; very showy variety, with golden bark; handsome all season. \$1.00 each.

LILACS

During the last few years there has been many new varieties of Lilacs introduced. These greatly surpass the older varieties both in their color, blooming and fragrance. The list given below covers the cream of recent productions.

HIGHLAND PARK VARIETIES

Purple Lilac (E)—The well known, old-fashioned Lilac; bluish purple flowers. 75c each; \$6.50 per ten.

White Lilac (E)—Fragrant and free-flowering. 75c each; \$6.50 per ten.

Charles Jolly (C)—Very dark reddish-purple; superb. \$1.00 each.



Lilac, Ludwig Spaeth

Ludwig Spaeth (E)—Panicles long, flowers large, dark purplish red. Very desirable. \$1.00 each.

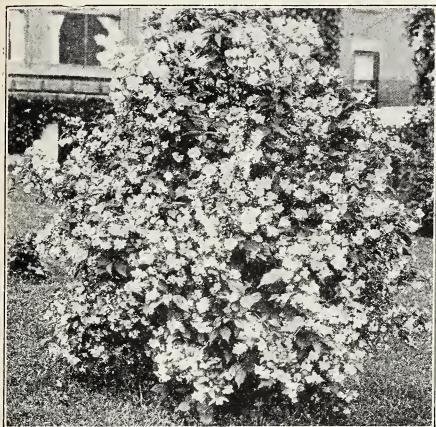
Lilac, Chas. X (E)—A rapid growing variety. Flower trusses large. Color reddish purple. \$1.00 each.

Marie Legeray (C)—Large panicles of white flowers. Valuable for forcing. One of the finest Lilacs. \$1.00 each.

Hugo Koster (C)—Single, large individual flowers, dark reddish-purple; one of the best Lilacs grown. \$1.00 each.

President Grevy (C)—A beautiful blue; individual flowers very double and very large. The panicle is magnificent; one of the finest Lilacs. \$1.00 each.

Villosa—A species from Japan. Large branching panicles; flowers light purple in bud, white when open; fragrant. Especially valuable, as its flowers appear two weeks after those of other Lilacs. \$1.00 each.



Syringa Coronarius

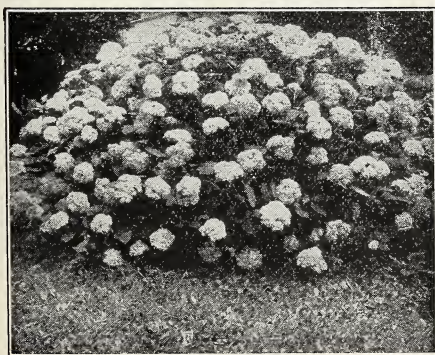
Syringa Coronarius (E)—A well-known old fashioned shrub, with pure white, highly-scented flowers; blooms among the earliest of the family. 50c each.

Syringa Grandiflorus (E)—Very large showy flowers, slightly fragrant; branches somewhat straggling. 50c each.

See Colored Page on back of Front Cover.

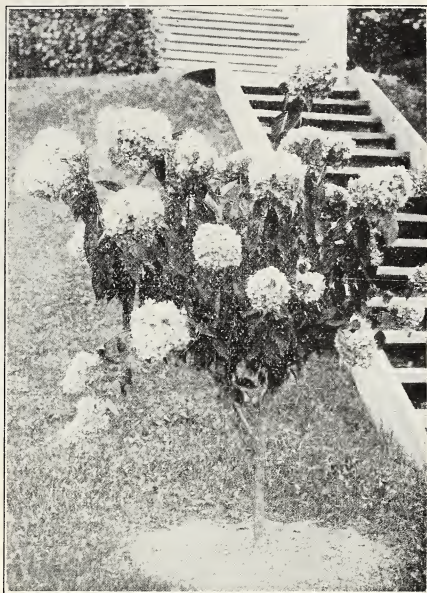
Syringa, Golden (F)—A very pretty medium sized shrub with golden-yellow foliage. It keeps its color the entire season. Very valuable to plant with other shrubbery or in front of a porch. 75c each.

High Bush Cranberry (E)—Very ornamental. Its red berries resemble cranberries which hang on until destroyed by frost. 60c each.



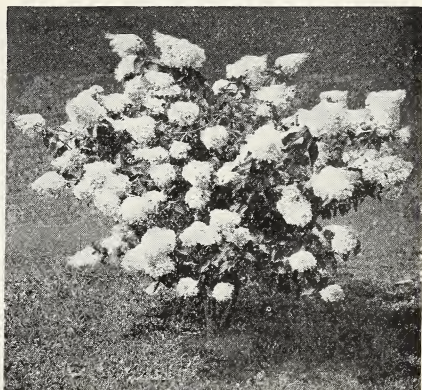
Hydrangea, Arborescens

Hydrangea, Arborescens Grandiflora Alba (Hills of Snow) (E)—This hardy American shrub is the very finest addition to this class of plants found in many a year. The blooms are of the very largest size, of pure snow-white color, and the foliage is finely finished. 60c each.



Hydrangea, P. G., Tree

Hydrangea, P. G., Tree Form (E)—Same as bush, but grown in tree form with single stem. 3 ft., \$1.00; 4 to 5 ft., \$1.50



Hydrangea, P. G.

Hydrangea, P. G. (E)—One of the most popular hardy shrubs, and also one of the finest flowering varieties. The immense heads of bloom are cream-color in bud, pure white when fully expanded, changing to pink and bronze with age, and finally to and September, when very few shrubs are in flower. 50c each.

See Colored Page on back of Front Cover.

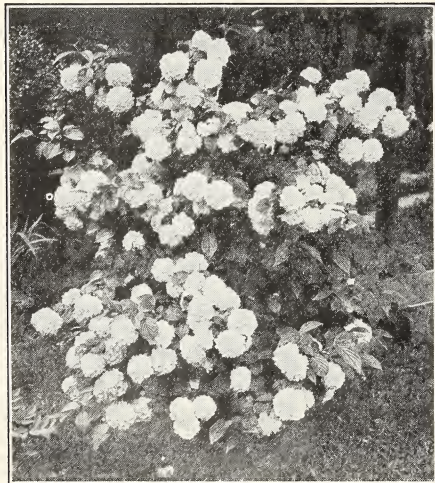


Snowberry

Snowberry, Racemosus (E)—Bushy form, small pink flowers in summer; quantities of large, white, waxy, roundish berries in autumn that remain on the plant through part of the winter. 50c each.

See Colored Page on back of Front Cover.

Snowberry, Vulgaris (E)—Low growing, spreading, graceful habit; foliage attractive; noteworthy for the beauty of its clusters of red berries which hang on the bush all winter. 50c each.



Japan Snowball

Snowball, Japan (Viburnum Plicatum) (E)—An erect, compact shrub, blooming in June; completely covered with large balls of flowers that are as white as snow, foliage is dark green. We recommend this most highly. \$1.00 each.

Snowball, Common (E)—A well known favorite shrub producing its snowy-white flowers in large balls in June. 75c each.

Forsythia, or Golden Bell (E)—Early and showy spring bloomer; flowers bright yellow, appearing before leaves. 50c each.

See Colored Page on back of Front Cover.

Kerria, Japonica (F)—A green branched, slender, graceful shrub, with drooping branches, rich, dark yellow flowers which bloom all summer. 60c each.

PÆONIES

Two-year-old roots 50c each; By Parcel Post add 5c each; 35c per ten.

Edulis Superba—Large, early. Bright color mixed with lilac. Very free bloomer.

Alexandriana—Very large, double, light violet-rose; free bloomer. Late.

Madam Loise—Double pink. One of the largest Pæonies grown.



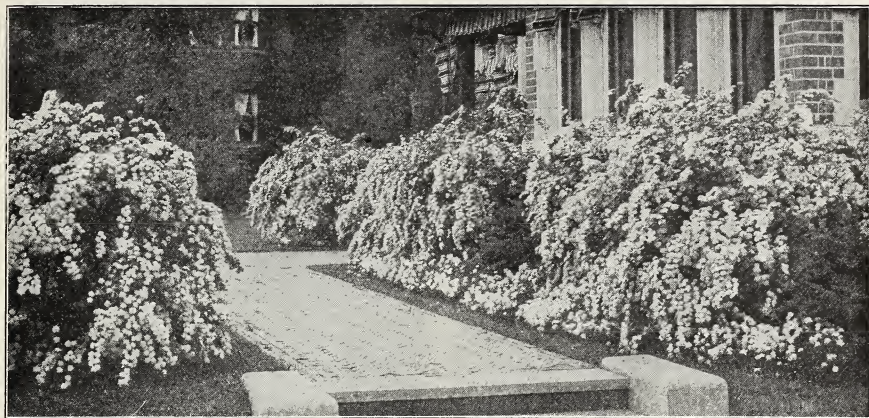
Festiva Maxima

Festiva Maxima—Very large snow-white, some petals crimson. Vigorous grower. Early.

Couronne D'Or—Very double; yellowish. Grand cut-flower sort. Very late.

Humei—Large, very full; clear cherry pink. Strong grower. Late variety.

Louis Van Houette—Deep carmine rose with purple tints; very showy. Late.



Spirea Van Houttei is especially attractive when planted in groups

SPIREAS

All the Spireas bloom with a riotous extravagance which makes them quite striking. Their individual style, color and habits of growth differ so markedly that a collection of varieties will insure bloom the entire season and still evade the monotony of repetition.

Spirea, Van Houttei (E)—Without doubt the finest variety in the collection. At the flowering season in May and June the plant is covered with a mass of large, white flowers, presenting a beautiful appearance. Very hardy. One of the finest shrubs in the Catalogue.

3 to 4 feet, 50c each; \$4.50 per ten
See Colored Page on back of Front Cover.



Spirea, Prunifolia

Spirea, Prunifolia (Bridal Wreath) (E)—A superb, old-fashioned variety, with graceful, upright, slender branches covered with a wreath of white flowers in May. 60c each.

Spirea, Aurea (Golden) (E)—Foliage green, bordered with rich golden yellow. In June the branches are covered with double white flowers. Very conspicuous. 50c each.

WOOD'S QUALITY SHRUBS

As large or larger than can be bought from other agents at double the price.

Spirea, Billardi (E)—Rose-colored flowers in spikes; blooms nearly all summer. 50c each.

Spirea, Bumalda (F)—A low growing bush with dark leaves. Blooms early in May. Flowers a delicate pink. Very desirable. 50c each.



Spirea, Anthony Waterer

Spirea Anthony Waterer (F)—A dwarf variety of great beauty. Its broad, flat heads of red flowers continue in perfection all summer. 50c each.

Spirea, Thunbergii (F)—A dense, feathery bush. The foliage, which is a peculiar shade of yellowish-green, changing in autumn to bright red and orange. Flowers pure white, borne in feathery masses in early spring. 50c each.



Weigela, Rosea

Weigela, Rosea (E)—An elegant shrub; with fine rose-colored flowers; of erect, compact growth; blossoms in June. 50c each. See Colored Page on back of Front Cover.



Weigela, Eva Rathke

Weigela, Eva Rathke (F)—Flowers brilliant crimson. A very attractive variety. Almost a continuous bloomer. 75c each.

Weigela, Variegated (F)—Of dwarf habit; finely variegated foliage which lasts the entire season; contrasts nicely with its rose-colored flowers. One of the best. 75c each.

WOOD'S ORNAMENTAL VINES

If sent by Parcel Post add 5c each; 25c per 10.



Ampelopsis Veitchii—A handsome covering vine that will cling to any surface

Ampelopsis Veitchii (Boston Ivy)—Leaves overlap one another, forming a dense sheet of green. It grows rapidly and clings to wall or fence with the tenacity of Ivy; the foliage is very handsome in summer, and changes to crimson scarlet in autumn. For covering walls, garages, rockeries, etc., no plant is so useful. For the ornamentation of brick and stone structures, it can be specially recommended. 75c each.

Clematis, Paniculata—Single, white. Of extremely rapid growth, with shining green foliage, and a profusion of flowers which are small, but borne in large panicles; very popular. 50c each.

See Colored Page on back of Front Cover.

Clematis, Jackmanni—Large, intense violet purple and remarkable for its velvety richness; free in growth, abundant and successive bloomer. 75c each.

See Colored Page on back of Front Cover.

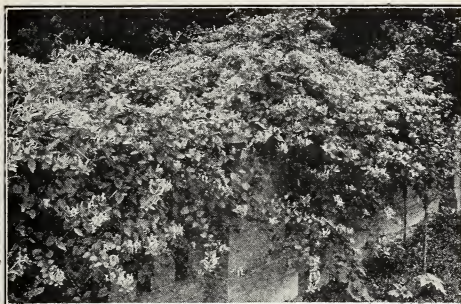
Clematis, Henryii—Single; the finest white Clematis; very large, fine flowers; grows rapidly, blooms freely during summer and autumn. 75c each.

Clematis, Mme. Ed. Andre—Flowers medium size; dark red; flowering. 75c each.

See Colored Page on back of Front Cover.

Virginia Creeper—A fine rich green in summer, changing to crimson in autumn. Affords shade quickly and is very desirable for covering walls, verandas or trunks of trees. 75c each.

See Colored Page on back of Front Cover.



Hall's Japan Honeysuckle

Honeysuckle, Hall's Japan—A strong, vigorous, almost evergreen sort, with pure white flowers, changing to yellow. Very fragrant. Covered with flowers from July to December; holds its leaves until January. Best bloomer of all vines. 50c each.

See Colored Page on back of Back Cover.

Birthwort, or Dutchman's Pipe—Brownish flowers, resembling a miniature pipe. This is an ideal vine for situations requiring dense shade. Splendid for archways or verandas. The leaves are very large, broad, closely laid and deep green; vine grows rapidly. \$1.00 each.

Evonymus Radicans—One of the finest evergreen vines, with small, rich green foliage, and pink fruits in cells which separate and expose the scarlet arils. For covering rocky banks, rough walls, tree-trunks, etc., also for vases, baskets and borders of beds. 50c each.



Wistaria, Purple

Wistaria, Chinese Purple—A rapid grower, unsurpassed for beauty and picturesqueness. It is hardy and lives to a great age, doing as well in cities amid unfavorable conditions as in the country. Has long, pendulous clusters of pale flowers in May and June and in autumn. 75c each.

See Colored Page on back of Back Cover.

Evonymus Vegetus—Essentially a low-wall cover. For the purpose it is unsurpassed; being close-covering, absolutely hardy, glossily evergreen, and bright throughout most of winter with its persisting orange-red berries. 75c each.

WOOD'S CHOICE ROSES

OUR ROSES ARE STRONG, TWO-YEAR, FIELD-GROWN PLANTS
WILL BLOOM THE FIRST YEAR

No class of flowers is as well or as universally loved as are Roses. They do best in a warm, sunny spot, and must be shielded from strong winds; they thrive in most any soil that is well drained. Our Roses are strong, hardy, field-grown plants.

SPECIAL PRICES ON ROSES

75c each (unless otherwise noted)

Clio—Flowers large, in clusters, of fine globular form, flesh-color shaded in the center with rosy pink; growth vigorous; handsome foliage. One of the best roses.

J. B. Clark—The flowers are large, well formed, deep scarlet shaded with blackish-crimson and very fragrant. Its chief merit is its extraordinary blooming qualities.

Juliet—Should be planted with every collection of Roses. Color on outside old gold, inside a rich rosy red, changing to deep rose as the flowers expand. Very fragrant.

Magna Charta—Bright pink, overspread with carmine; very large, full and fragrant, with magnificent foliage; a free bloomer.

If sent by mail add 5c per plant.

Mad. Gabriel Luizet—A magnificent, large, full and fragrant flower. Soft pink with deep flesh-colored center. One of the choicest.

Paul Neyron—This magnificent Rose is by far the largest in cultivation; very double; of a beautiful deep rose color and delightfully fragrant; borne upon vigorous upright shoots in great abundance throughout the entire season.

Margaret Dickson—Pure white; fine form, very large; a strong grower and free bloomer.

Ulrich Brunner—A Rose of beautiful form and finish, very striking for its color of brilliant cherry-crimson. Free bloomer.



Snow Queen—Most Perfect White Rose

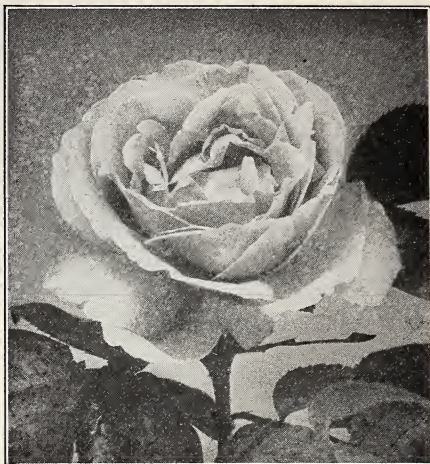
Snow Queen (formerly *Frau Karl Druschki*)—White American Beauty—Vigorous and hardy. A great beauty. \$1.00 each.

See colored Page 43.

Marshall P. Wilder—Cherry-carmine, shaded with maroon; fragrant. Vigorous and hardy. Continues to bloom profusely after others are out of flower.

Columbia—Big Rose, open flowers measuring six inches across. Color true pink, deepening as it opens to glowing pink. A peculiarity of this variety is that the shades all become more intense until the full maturity of open flower is reached, color enduring. Great Rose. \$1.00 each.

See colored Page 43.



General Jacqueminot

General Jacqueminot—Brilliant crimson; one of the most handsome and most showy roses of this color; beautiful in the bud.

Los Angeles—New California product, one of the grandest all-around Roses of America ever put on the market. The stems are long as on *American Beauty*; the flowers are large as *Paul Neyron*, from long and pointed buds. Its freedom and continuance of bloom are remarkable; its color "has the tints of the dawn, the gold of noon-day and the blush of the sunset," according to one poetic admirer. \$1.00 each.

See colored Page 43.

Prince Camille de Rohan—Deep velvety crimson, the nearest approach to a black rose; large, moderately full. A splendid rose.



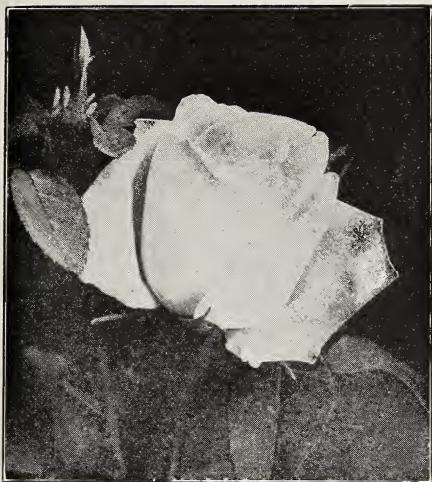
Gruss an Teplitz

Gruss an Teplitz—Scarlet, shading to velvety crimson, very fragrant; a free grower and most profuse bloomer. Blossoms the entire summer. We can recommend it as one of the choicest roses.



Mrs. John Laing

Mrs. John Laing—Delicate pink, with a satiny sheen; fragrant. Free bloomer.



Kaiserin Augusta Victoria

Kaiserin Augusta Victoria—Beautiful rose; elegant, large pointed buds; very large, full double flowers; delicate creamy white; deliciously fragrant.



Mrs. Aaron Ward

Mrs. Aaron Ward—Coppery-orange in bud, golden-orange when partly developed, pinkish-fawn when fully open. Color effect of whole flower is Indian-yellow. All who see it love it. \$1.00 each.

See colored Page 43.

Duchess of Wellington—Called orange Killarney. Intense saffron-yellow, stained with rich crimson. As the flower develops it becomes deep copper, saffron-yellow. Petals large and of great substance. Free flowering and delightfully fragrant, and without a rival in this class and color. \$1.00 each. See colored Page 43.

Ophelia—Beautiful in bud and flower; blooms freely; a long keeper. Color, salmon-pink, shading to rose. A very attractive and beautiful variety. One of the best. \$1.00 each. See colored Page 43.



Pink Killarney—Queen of the Irish Roses

Pink Killarney—Color especially beautiful, an exquisite shade of deep sea-shell pink. Buds and flowers enormous size. Petals being frequently two and one-half inches deep. Blooms profusely throughout season. \$1.00 each.

White Killarney—A duplicate of the charming pink Killarney, with flowers white as snow. \$1.00 each. See colored Page 43.

Jonkheer J. L. Mock—Color carmine on outside, imperial pink on inside of the flower. Blooms *very large*, perfectly formed, highly perfumed. Very satisfactory for bedding. \$1.00 each. See colored Page 43.

Mme. Butterfly—Color is a harmony of pink, apricot, and gold. The flowers resemble Ophelia in form. This Rose is largely grown for cut-flowers and keeps well when cut. Fine for bedding, for if kept well cultivated and in good growing condition it will produce flowers almost continuously all summer until frost. \$1.00 each.

Red Radiance—Extra hardy, vigorous and prolific; fine grower and free bloomer. One of the best and prettiest all-around garden red roses. \$1.00 each.

See colored Page 43.

PREMIER (New). This is one of the most magnificent Roses. Color is rich, deep rose and the full, perfect blooms, of large size, are produced on almost thornless stems. A robust grower, producing splendid blooms all season. \$1.00 each.

See colored Page 43.

George Arends, or Pink American Beauty—The color delicate pink is unapproachable. The flowers are produced in great profusion in June. Strong grower, one of the best. \$1.00 each.

WOOD'S CHOICE CLIMBING ROSES

TWO YEARS OLD—FIELD GROWN

Special Price, 65c each

(Unless otherwise noted)

If sent by mail add 5c per plant; 25c per ten.

Paul's Scarlet Climber—New dazzling Red Climbing Rose. For brilliancy of color this Rose outclasses every other climbing variety in the red shades. The color is vivid scarlet which does not fade but remains bright until the flowers fall. The blossoms are medium in size, semi-double and perfect in bud form. It surpasses all bush red roses in color. Received the Gold Medal and Cup for the best new climber at the National Rose Society Exhibit. \$1.00 each.

Climbing American Beauty—A new and wonderfully beautiful Rose—One plant of this new Rose will produce twenty times as many blooms as the old American Beauty. Over nine hundred blossoms and buds have been counted on one four-year-old bush. The Roses grow on single stems and measure three or four inches in diameter. It has proved perfectly hardy, and the foliage is green and beautiful until the snow falls. It is a worthy ornament to any garden, and its beauty and fragrance will prove a lasting pleasure. If you are a lover of Roses do not fail to plant the Climbing American Beauty. 75c each.

Excelsa or Red Dorothy Perkins—The most handsome of all climbers. Double scarlet flowers in large trusses. Extremely vigorous and hardy. 50c each.

Dorothy Perkins—Clear shell-pink with flowers borne in clusters; full and double, with crinkled petals. The foliage stays on until winter. This is without question one of the very finest of all climbing Roses. 50c each.

White Rambler—Similar to crimson; pure white. 50c each.



Baby Rambler Red

Baby Rambler—Bush, not Climbing. Flowers are large, well formed, crimson in color, and borne in clusters of 20 to 40 flowers at one time. Blooms profusely from June until frost. Very desirable for summer bedding and, when planted as a hedge, is an object of beauty. 75c each.

Aviateur Bleriot—New yellow climbing Rose, golden-yellow center; full, medium size, flowering in clusters. Very vigorous, and the finest yellow shading of its class, as well as the first of its color we have been able to offer. Only a very few two-year plants to offer. \$1.00 each.

Crimson Rambler—Vigorous, rapid grower, with large clusters crimson flowers. Makes attractive hedge.

Thousand Beauties—Superb; large double clusters; varying colors; blooms freely from June until August; strong grower; magnificent foliage.

Dr. Van Fleet—One of the newer types of Climbers, which combines absolute hardiness with flowers large as in the Tea Roses. This variety shows a mass of beautiful clusters of rich, flesh-pink buds, and when opened large, delicate flowers, with stems 12 to 18 inches long.

Yellow Rambler—Light canary shade; clusters smaller, individual flowers larger than Crimson Rambler. 50c each.

PRIDE COLLECTION

Roses shown on colored plate on Page 43 are all Hybrid-Teas, strong healthy, 2 yr., field grown roses.

When planting Pride collection there is assurance of absolute success as they are true to name and color.

The Most inexperienced planters have won blue ribbons, cups and medals with this collection. No garden is complete without these varieties.



"PRIDE COLLECTION"

The Pride of the Rochester Flower Show
HYBRID-TEA ROSES

Ten strong, healthy, 2 year field
grown roses, flowering this year,
for \$9.00 prepaid

- | | |
|--------------|----------------|
| 1—Ward | 6—Los Angeles |
| 2—Wellington | 7—Ophelia |
| 3—Killarney | 8—Snow Queen |
| 4—Columbia | 9—Red Radiance |
| 5—Mock | 10—Premier |

Any of the above named varieties
\$1.00 each

See pages 39, 40, 41, and 42



DAHLIAS—ALL PRIZE WINNERS

	<i>Each</i>
1—Mrs. Nat. Slocombe	\$1.50
2—Delice50
3—Pierrot75
4—Kalif	1.00
5—Bianca	1.50
6—Dr. Tevis	1.00

Prize Collection of Dahlias

One each of the above sent prepaid \$5.50
These flowers have taken prizes wherever shown
 See pages 45 and 46

"Prize Collection of DAHLIAS"

HAVE you ever felt the thrill of being a prize winner at a flower show, felt the satisfaction of having the biggest and best Dahlias in your vicinity? It is no more trouble, takes no more experience to have the best flowers if you start with prize-winning bulbs.

This Prize Collection of Dahlias, wherever shown by the most inexperienced planter, has won cups, medals and ribbons.

Through a special effort on our part we have lowered the price of this prize-winning collection listed below, so that it costs less to plant these flowers and win ribbons than to pay exorbitant prices and have poor flowers.

Mrs. Nat. Slocombe	Dr. Tevis
Kalif	Bianca
Pierrot	Delice

See description on next column and Colored Plate on Page 44.

No matter what else you have planned to plant, you will surely want this "Prize Collection of Dahlias." They will be the pride of your garden and the envy of your friends.

6 Prize winning DAHLIAS
ONE EACH OF THE ABOVE
SHIPPED PREPAID FOR \$5.50

PRIZE COLLECTION OF DAHLIAS

One each of the following sent Pre-paid \$5.50

These flowers have taken prizes wherever shown.

See Pages 45 and 46.

MRS. NAT. SLOCOMBE—No other Variety approaches this for a good all around bright primrose-yellow; it is fine in color, of splendid shape with good stems and very free flowering over a long season. . . . Each \$1.50

KALIF—A truly majestic flower, frequently measuring over 9 inches in diameter, of perfect Cactus form, in color a pure scarlet. The habit of the plant is all that can be desired; the gigantic flowers, produced very freely, are held erect on strong stiff stems, making it a most effective and useful variety for cutting as well as for garden decoration. . . . Each \$1.00

PIERROT—A unique and striking color, and of unusual grace, being composed of very long, narrow tubular petals, which are of a deep amber color, usually showing white tips, but even when it comes a self color without these tips it possesses an individual refinement different from all other sorts. . . . Each \$.75

DR. TEVIS—A magnificent Dahlia that has made a wonderful record for itself at all exhibitions and which is equally as valuable for garden decoration and as a cut flower. In color it is a beautiful shade of soft salmon-rose suffused with old gold, shading to a golden apricot center. The immense flowers which are of graceful attractive form, are held erect on fine long stems; an early, free and continuous bloomer. . . . Each \$1.00

BIANCA—(Cactus)—Coloring is beautiful rose-lilac, with white shadings, and the great blooms are held on strong, stiff stems. . . . Each \$1.50

DELICE—One of the most beautiful Dahlias for garden decoration that we offer. Free bloomer; flowers are large, borne on stout, stiff stems of sufficient length to make them valuable for cutting. Color—bright, clear, rose-pink. . . . Each \$.50

See Colored Plate Page 44.

Wood's Dahlias of Special Merit

WOOD'S FANCY DAHLIAS

Six Good Varieties for Cut Flowers
All Prize Winners

GEISHA—Probably the showiest and most attractive dahlia in cultivation. The color is a brilliant scarlet and gold with a ring of clear yellow at the center. 75c each.

Hortulanus Fiet—Flower over 8 inches in diameter, of the most delicate shade of shrimp pink, the tip of each petal barely touched with gold. The entire flower has a suffusion of delicate tints of red and yellow, which gives a glow yet softness of color of great charm. 75c each.

John Wanamaker—A beautiful violet-rose. Type distinct and unique. 50c each.

King of Autumn—A grand shade of autumn tints, on long stems; blooms freely. One of the best. 75c each.

Maude Adams—An early and very free blooming sort, on the order of Susan, but larger and less globular. Very dainty; white, with a slight lavender suffusion inclined to focus at center. 50c each.

Rose—Rosy purple shade. Flowers erect on long stems. Popular. 50c each.



Yellow Duke Decorative Dahlia

DECORATIVE DAHLIAS

30c each; 5 (one of each) for \$1.25

Jack Rose—Brilliant crimson-red similar in shade to the popular "Jack" Rose; perfect for garden decoration and cutting.

Jeanne Charmet—A most pleasing cut flower type, of formal construction and refreshing color arrangement; violet rose overspreading lighter shades.

Red Hussar—Tall, bushy, upright; a handsome landscape variety, or for one color bouquets; its medium sized flowers gleam like rubies at pleasing intervals, above a rich setting of very dark green, crinkled foliage.

DECORATIVE DAHLIAS—Continued

White Swan—Pure white. A great favorite. Best bloomers in this class.

Yellow Duke—A free flowering long stemmed form of Grand Duke; rich primrose-yellow.

30c each; 5 (one of each) for \$1.25



J. H. Jackson—One of the finest Cactus Dahlias

CACTUS DAHLIAS

35c each; 6 (one of each) for \$1.85

J. H. Jackson—The finest, near-black Cactus Dahlia in existence. Color deep, velvety blackish maroon. Gigantic in size.

Ambassador—A good sized white cactus, coming into bloom very early and continuing in good shape to the end of the season. It is ivory-white.

Countess of Lonsdale—An old and very popular variety. Longest season and freest bloom of any Cactus type; flowers very large, complete and perfect. Color exquisite blending of amber and salmon-pink.

Marjorie Castleton—Delicate rose-pink or shell-pink. It is an early, free and continuous bloomer with flowers of good quality to the end of the season. They are of good size, making them ideal for cutting.

Golden Gate—Great full flowers often 9 inches across, borne early and free; deep, rich golden yellow, shaded with fawn. A favorite evening variety.

Rene Cayeux—Earliest and freest blooming variety; rich geranium-red.

Lily of the Valley—An excellent little perennial planted everywhere for its pure white bell-shaped flowers and their delightful fragrance. It will thrive in any kind of soil. Blooms early in Spring.

10c each; 85c per ten



Phlox, Fraulein G. Von Lassburg (Pure White)

La Vague—A beautiful shade of violet.
Champs Elysee—Bright red. A great favorite.

Pantheon—Peerless pink. Extra large.
Caran d'Ache—Variegated with old rose shadings.

R. P. Struthers—Rosy carmine, with dark red eyes.

Fraulein G. Von Lassburg—Pure white. Very large.

Our Phlox are 2 years old, strong and hardy; will bloom the first year.

30c each; 6 (one of each) for \$1.50



Delphinium or Larkspur

Delphinium (Larkspur)—The flowers are of a beautiful deep blue. Their long, showy spikes of flowers persist from June until frost and furnish the most satisfactory blue to any color scheme. Light blue and dark blue. 30c each; 6 for \$1.50



Shasta Daisy

Shasta Daisy—A very hardy perennial, blooming better and more abundantly each season, and continuing to bloom for several months. The pure white flowers are from two and one-half to four inches in diameter, and are borne singly on long, stiff, wiry stems. Strong field-grown plants. 30c each; 4 for \$1.00



Iris, Japan

The flowers of the Japan Iris are of the richest colors, ranging from white to purple, with

delicate markings and veinings. Most delicate and beautiful combinations of colors imaginable. 25c each; 6 for \$1.25

NEW GIANT MALLOW MARVELS

Red Flowering Mallow—Of all recent improvements among perennials, this new mammoth flower is the most striking and notable. The colors are wonderfully intensified. The flowers (10 to 12 inches across) are so vividly showy in their bloom as to demand a place in every garden. They are a delight to the eye; are hardy, and come up each year from the roots, developing into a bush 6 to 8 feet high, and have beautiful foliage. 40c each; 6 for \$2.00.



Campanula or Bell Flower

Campanula or Bell Flower—Are among the most beautiful perennials in cultivation and are used extensively for border plants. They possess that light transparent grace that is so attractive in a flower. Very free of bloom throughout a long season, and adapted to any garden soil. Especially good for cutting. Blue and white. 30c each; 6 for \$1.50

Golden Glow (E)—Large, showy plant, blooms from early summer until frost. Flowers 3½ inches in diameter, double, deep golden-yellow color, resembling yellow Chrysanthemums. 20c each; 2 for 35c; 6 for \$1.00.

GIANT HOLLYHOCKS

Hollyhocks, King of the Garden—Most ornamental and handsome garden flowers, with their tall spikes dotted with large, double flowers of the most lovely color. Can be used with great effect as borders or against buildings, etc. Double Pink, Red, Yellow, White and Maroon. 30c each; 6 for \$1.50

Gaillardia—One of the most gorgeous of all flowering plants. A hard center of deep maroon is thickly bordered with petals of orange and yellow, ringed by circles of crimson, red and maroon. 30c each; 6 for \$1.50



Digitalis or Foxglove

Digitalis or Foxglove—One of the most widely known and popular plants. The racemes are often two feet in length, containing scores of prettily-spotted thimble-shaped flowers. Very desirable for use in borders or as a background for lower growing plants. 30c each; 6 for \$1.50



Chicago White and Cracker-Jack

EXTRA CHOICE GLADIOLI

The Best Varieties Grown

Used by Florists for Weddings, Funerals, Decorations, etc.

Prices—2 for 50c; 10 for \$2.00;
\$15.00 per 100

Evelyn Kirtland—The flowers of strong substance are a beautiful shade of rosy pink, darker at the edges, fading to shell-pink at the center with brilliant scarlet blotches on lower petals; the entire flower showing a glistening, sparkling lustre. Very tall spike. Extra fine form and color.

Herada—Blooms of immense size on tall straight spikes. An intense phlox color, shaded pure purple. Large flowers, many open at one time.

Liebesfeuer—A solid, brilliant scarlet. Many blooms open at one time, on a tall, erect spike. One of the finest and richest colored in existence.

Prince of Wales—Delicate salmon, rich wax-like flowers; one of the first to bloom, and a novelty of great value. Eight or ten blooms open at one time.

Schwaben—This is the largest and strongest flowered yellow Gladiolus. A clear citron-yellow, with aster-purple tongue on lower petals. Buds sulphur-yellow.

White Giant—Tall, immense pure white flower. Healthy, strong grower. Its shape resembles an Easter lily. Has frosted appearance by artificial light.

CHOICE VARIETIES OF GLADIOLI

2 for 25c; 3 for 35c; 10 for \$1.00;
\$8.00 per 100

America—Too much cannot be said of this dainty pink variety. Flowers immense size; and of waxy texture, borne on strong spike.

Chicago White—Large flower, pure white with faint lavender streak in the lower petals; very early bloomer.

Cracker-Jack—A rich maroon. A fine strong growing variety and a good bloomer.

Hadley—Attractive early-blooming sort, large, well-opened flowers, salmon-pink.

Panama—Companion to America, very popular. Perfect Hermosa pink, large, wide-open, wax-like flowers.

Princepts—(Known as Thousand Dollar Gladiolus). Amaryllis-like flowers, rich dark scarlet marked with white on lower petals.

Yellow Hammer—Delicate sulphur yellow, with darker shade in lower petals.

GLADIOLI COLLECTIONS

Of the Above Varieties

5 (1 of a kind) for 50c By mail 58c
10 (2 of a kind) for \$1.00 By mail \$1.12
25 (5 of a kind) for \$2.00 By mail \$2.20



Hardy Chrysanthemums

Hardy Chrysanthemums live through the winter without protection. Bloom after all the other flowers are destroyed by frost.

Autumn Glow—Brilliant crimson flowers.

Early Snow—Pure white flowers.

Quinola—Golden-yellow. Small flowers.

Silver Moon—Beautiful shell-pink flowers

Mumo—Large yellow.

Large 2-year plants, 25c each; 5 (one of each color) \$1.10; 10 for \$2.00.



CALIFORNIA PRIVET HEDGE

HEDGE PLANTS

NOT many years ago the only hedges to be seen were those used for defense or defining boundaries, but today they are planted extensively for ornament. Many beautiful effects are now possible, and it is needless to say that these fences of living green beautify our homes and are rapidly supplanting the old-fashioned picket and iron fences. Probably the most widely planted of the deciduous hedges is the California Privet.

California Privet—A rapid and vigorous grower. It has handsome, glossy, oval-shaped leaves which remain well into the winter. Very popular for ornamental hedges.

	Each	Ten	Hundred
9 to 12 inch; 2 Years	\$.10	\$.75	\$ 4.00
15 to 18 inch; 2 Years15	1.00	6.00
18 to 24 inch; 2 Years20	1.25	8.00
2 to 3 ft.; 2 Years25	1.50	10.00



BARBERRY THUNBERGII HEDGE

Barberry, Thunbergii—Dwarf growing; foliage rich, bright green; brilliant red color in autumn. Red berries also appear at that time. Perfectly hardy, easily transplanted and free from insects. Very ornamental and as attractive in winter as in summer.

	Each	Ten	Hundred
15 to 18 in. 2 Years. Extra	\$.30	\$2.50	\$20.00
18 to 24 in. 3 Years. Extra40	3.50	30.00
2 to 3 ft. 3 Years. Extra50	4.50	40.00



EVERGREEN PLANTING ON DRIVE

EVERGREENS

Evergreens are beautiful all the year and form grand specimens in time. We strongly recommend to our customers to plant more largely of the hardy sorts. In the following list we confine ourselves strictly to perfectly hardy species and varieties, such as are most useful for general planting. In transplanting Evergreens, so much depends upon the care of the planter in protecting roots from the air and sun that we cannot guarantee them further than that delivery shall be made in first-class condition. We recommend spring planting for Evergreens.

We have the Finest and Largest Collection of Choice Evergreens in the Country

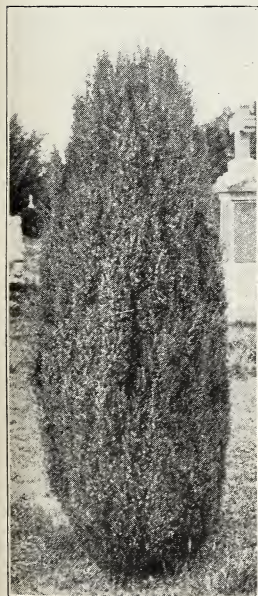
They are dug with ball of earth, and roots wrapped in burlap.

ALL SPECIMEN PLANTS

IRISH JUNIPER

A distinct and beautiful variety of erect, dense conical outline, resembling a pillar of green; very desirable. Extra Heavy Specimens balled 4 ft. \$5.00 each.

RED CEDAR (Virginiana). A well known American tree, with fine dense foliage varying in habit and color, the majority being formal and bluntly conical, others loose and irregular. 3 to 4 ft. \$5.00 each.



Irish Juniper



MUGHO—Dwarf Mountain Pine

Mugho—Dwarf Mountain pine. Low, dense and spreading in growth, usually broader than its height. One of the most attractive and valuable of our dwarf Evergreens. 18 to 24 in. Specimens, \$5.00 each.



Compacta Globe Arbor Vitae

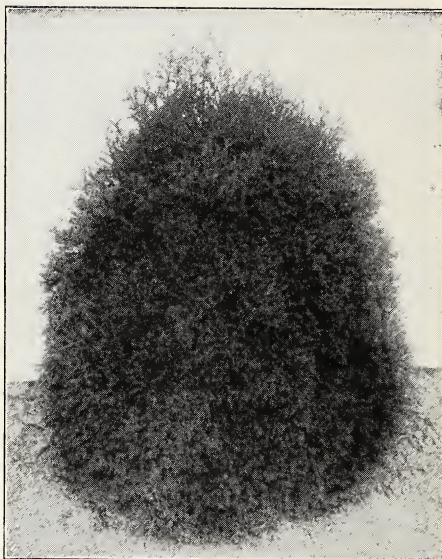
Compacta Globe Arbor Vitae—Of dwarf, compact form; light green foliage. Neat and attractive. Useful for beds, borders or around porches. 15 to 18 in., \$4.00 each.

Retinospora Aurea (Golden Japan Cypress)—One of the few really golden Evergreens. A plant of great beauty. Foliage soft plume like; close and compact habit. Striking and useful in many ways.

2 to 3 ft. Specimens..... \$7.00 each

Retinospora Plumosa—An exceedingly handsome Evergreen from Japan with feathery, light green foliage, more beautiful than a fern. Compact habit.

2 to 3 ft. Specimens..... \$7.00 each



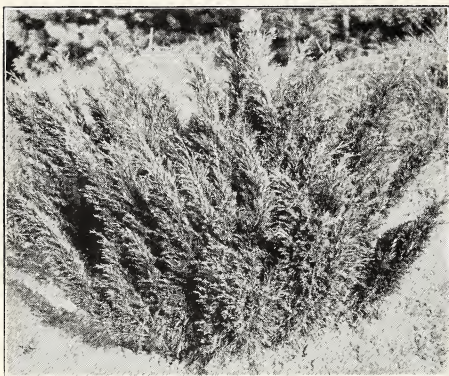
Occidentalis Arbor Vitae

Occidentalis Arbor Vitae—A well known variety of great value; forms an upright, conical tree of only medium size. A rapid grower. Excellent specimen for planting in tubs or on the lawn.

4 to 5 ft. \$7.00 each

Globe Arbor Vitae—Forms a natural Evergreen globe or ball without any trimming; very pretty and hardy; dense in growth.

18 to 24 inches..... \$6.00 each



Savin Juniper

Savin Juniper—A low spreading tree, with handsome, dark green foliage. Very hardy and suitable for lawns and around porches. Can be pruned to any desired shape.

2 to 3 ft. \$6.00 each

Juniper Swedish (Suecica)—Dwarf, compact habit; with bluish-green foliage. Forms a beautiful pyramidal tree. Holds its color in winter.

18 to 24 in. \$5.00 each

Juniper Pfitzeriana—A beautiful new Evergreen of spreading, graceful habit, with silvery green color. Both the main stems and lateral shoots have a light, feathery appearance. Distinctive and charming.

2 to 3 ft. \$7.00 each

Plant Evergreens for winter effect. They retain their foliage and liven up the landscape when other things are dormant.

Pyramidal Arbor Vitae—One of the most beautiful varieties, very erect and regular in form, resembling the Irish Juniper; foliage a deep green color, well retained in winter; perfectly hardy. Unlike the Juniper it is easily transplanted and sure to give satisfaction.

3 to 4 ft. Specimens..... \$8.00 each

Chinese Arbor Vitae—The flat growth of the young branches, and its dense foliage with bright green color, makes it most beautiful and very valuable.

4 to 5 ft. Specimens..... \$10.00 each
 5 to 6 ft. Specimens..... 12.00 each



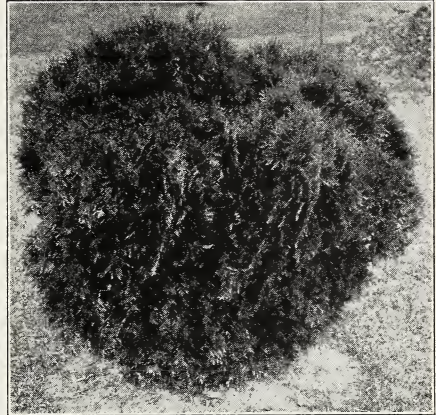
Thuja American Arbor Vitae

Thuja American Arbor Vitae—Erect pyramidal habit; soft, dark green foliage. Dense from ground up. Rapid grower; hardy. Excellent specimen for planting in tubs.

4 to 5 ft. \$ 7.00 each
 5 to 6 ft. 12.00 each
 6 to 7 ft., Heavy Specimens.. 15.00 each

THUYA ARBOR VITAE, PYRAMIDAL SHAPE

The habit of growth is pyramidal but not so distinct as the Pyramidal Arbor Vitae.
 4 to 5 ft. \$ 7.00 each
 6 to 7 ft. 12.00 each



Siberian Globe Arbor Vitae

Siberian Globe Arbor Vitae—A superb variety; somewhat similar to American, with heavier and fuller foliage and more compact habit. It holds its color during winter and bears trimming well. One of the hardiest.

18 to 24 in. \$6.00 each
 24 to 30 in. Specimens..... 8.00 each

EVERGREENS

There was a time when a few flowers and shrubs that bloomed or remained green a few short weeks during the summer were sufficient to answer all needs for home improvement. However, at the present age, no garden is altogether satisfactory without some provisions for results and effects that may be had continually throughout the winter.

Evergreens are the greatest factor in successful planting of home grounds, and larger landscapes for they combine in the highest degree beauty, lasting qualities, and usefulness. Richly varied in form and texture, they are alike in their perfect adaptability to all home surroundings, they protect, adorn and dignify, wherever they grow.

The right choice and wise use of evergreens means a home beautiful at all seasons of the year, their different colored foliage making a strong background for the brilliant colors of summer, at the same time aiding wonderfully in brightening the winter aspect of your garden, while other shrubs are dormant.



Woodlawn Grass Seed Mixture

We take special pride in our Famous Woodlawn High Quality Grass Seed Mixture. It is composed of the very best grades of Blue Grass, Red Top, White Clover and other desirable varieties; no cheap or light seed of any description is used.

If the right kinds of grasses are used in correct proportions they will produce a thick sod of rich, deep green, throughout the entire growing season. We carry only the best quality of seed, insuring best results.

Do not mix any other grasses with our mixture. It is correctly proportioned for nearly all situations and conditions of soil.

Prices of Woodlawn Grass Seed Mixture

1 Lb. \$.50 Prepaid
 5 Lbs. 2.00 Not Prepaid

10 Lbs. \$3.75 Not Prepaid
 1 Bu. (20 Lbs.) 7.00 Not Prepaid

FERTILIZER

WOODLAWN PULVERIZED SHEEP MANURE

Very Best Fertilizer for Lawn and Garden

For private grounds, lawns, tennis courts, parks and golf courses, you will find our Pulverized Sheep Manure a most effective fertilizer. It is light, dry, odorless, free from seeds and all foreign matter. It will not burn the grass or plants, and quickly dissolves and disappears from the surface when your lawn and garden are watered.

Pulverized Sheep Manure will keep your lawn green and make your garden produce the finest vegetables and flowers.

5 Lbs. \$.40	100 Lbs. \$ 3.00
10 Lbs.75	500 Lbs. 12.50
25 Lbs. 1.25	1,000 Lbs. 20.00
50 Lbs. 2.00	2,000 Lbs. 38.00

For liquid manure, 1 pound to 5 gallons of water, used once a week. For greenhouse or house plants, mix one part to ten parts of soil.

LET NATURE BEAUTIFY YOUR HOME

No matter how elaborate or modest the home, nature can always add a finishing touch. One of the most essentials is a beautiful green lawn, which can be secured by planting Woodlawn Quality Grass Seed.

Then the careful selection and proper placing of a few Hardy Perennials, Shrubs and Annual flowers will complete the picture. Our Shrubs and Perennials are listed in our catalogue, commencing with Page 32.

Mr. Allen L. Wood,
 Rochester N. Y.

October 12, 1924.
 Rochester, N. Y.
 98 Herald St.

Dear Sir:

For the past three years I have been using the Woodlawn Grass Seed and Fertilizer for all my Landscape work. My customers have all been very well pleased with the beautiful lawns this seed has produced.

Yours truly,
 (Signed)

MR. JOHN TERBERG.



DUE TO A LIMITED AMOUNT OF SPACE, WE ARE COMPELLED TO CUT DOWN ON THE DESCRIPTION OF OUR SEEDS.

POSTAGE ON SEEDS PREPAID ON PACKET, OZ. AND LBS., EXCEPT WHERE OTHERWISE NOTED. If larger quantities are wanted by parcel post, add 7c per lb.

BUSH LIMA BEANS

Fordhook Bush Lima—Without doubt the best Bush Lima. Packet 10c; ½ lb. 35c; 1 lb. 60c, prepaid.

YELLOW PODDED BUSH BEANS

Packet 10c; ½ lb. 25c; 1 lb. 45c, prepaid; 10 lbs. or more 30c per lb.

Refugee Wax—One of the best Beans for the home garden or market.

Rustless Golden Wax—Fine quality, hardy, very productive.

GREEN-PODDED BUSH BEANS

Packet 10c; ½ lb. 25c; 1 lb. 40c, prepaid; 10 lbs. or more 30c per lb.

Improved Stringless Green-Pod—Excellent variety. Tender, absolutely stringless.

Bountiful—Of superior quality, early and productive.

BEETS

Packet 5c; 1 oz. 20c; ¼ lb. 50c; 1 lb. \$1.50, prepaid.

Extra-early Crosby's Egyptian—Early strain of the old favorite Crosby's Egyptian.

Detroit Dark Red—Turnip-shaped Beets for market, garden and winter storage. Rich red.

Mangel-Wurzel—Cattle and Field Beet. 1 oz. 10c; ¼ lb. 30c; 1 lb. 90c, prepaid.

CAULIFLOWER

Early Snowball—Dwarf variety; magnificent big heads; finest quality.

Packet 15c; ¼ oz. \$1.00; ½ oz. \$1.75, prepaid.

CARROTS

Packet 5c; 1 oz. 20c; ¼ lb. 40c; 1 lb. \$1.35, prepaid.

Chantenay Stump-rooted—Long, very thick, orange red.

Danvers Half-Long—Semi-stump-rooted.

CABBAGE

Packet 10c; ¼ oz. 20c; 1 oz. 40c; ¼ lb. \$1.00; 1 lb. \$3.25, prepaid.

Improved Danish Ballhead (short stem)—Winter variety, very popular. Heads solid.

Mammoth Rock Red—The old-fashioned red Cabbage; heads large, round and solid.

All Seasons—Early or main crop variety; large solid heads, fine quality.

Copenhagen Market—For home gardens and market; early, solid head, short stems.

Packet 10c; ¼ oz. 30c; 1 oz. 60c; ¼ lb. \$1.30; 1 lb. \$4.00, prepaid.

CELERY

Paris Golden Dwarf Self-Blanching—Rapid growth; early, golden, crisp, brittle.

Packet 10c; ½ oz. 85c; 1 oz. \$1.50.

Winter Queen—Solid, crisp. Splendid keeping variety. Packet 5c; ¼ oz. 20c; 1 oz. 40c; ¼ lb. 75c, prepaid.

LETTUCE

Packet 10c; 1 oz. 25c; ¼ lb. 80c; 1 lb. \$2.75, prepaid.

Big Boston—Most valuable for garden and market. Large, crisp, solid heads.

Crisp as Ice—Large, round, solid heads; yellow hearts. Perfect home garden variety.

Prize Head—A loose-headed variety; curly leaves, edged brown.

Black-seeded Simpson—Good for growing under glass or in open. Good size.

PARSLEY

Extra Triple-curved—Dwarf, extra-curved. Packet 5c; 1 oz. 15c; ¼ lb. 50c; 1 lb. \$1.50, prepaid.

SWISS CHARD

Large-ribbed Yellow Brazilian—Tall. Packet 10c; 1 oz. 20c; ¼ lb. 45c.

WOODLAWN NURSERIES

SWEET CORN

Packet 10c; ½ lb. 40c; 1 lb. 60c, prepaid.
 5 lbs. \$2.00; 10 lbs. \$3.50.
 Early Golden Bantam—Famous early sweet corn. Creamy-yellow, sweet kernels.
 Stowell's Evergreen—Best late.
 Golden Nugget—Second earliest.

CUCUMBER

Packet 10c; 1 oz. 25c; ¼ lb. 60c;
 1 lb. \$1.80, prepaid.
 Improved Early White Spine—Valuable for outdoor planting.
 Improved Long Green—Pickling variety.

ENDIVE

Packet 10c; ½ oz. 25c; 1 oz. 40c.
 Moss Curled—Foliage dark green.
 Broad-leaved Batavian—Leaves thick.
 French Endive—Popular as a salad.

MUSKMELONS

Packet 10c; ½ oz. 20c; 1 oz. 30c;
 ¼ lb. 75c; 1 lb. \$2.00, prepaid.
 Irondequoit—The finest yellow-fleshed melon on the market.
 Emerald Gem—Smooth, emerald green.
 Rocky Ford—Valuable shipping variety.

WATERMELONS

Packet 5c; 1 oz. 15c; ¼ lb. 40c;
 1 lb. \$1.25, prepaid.
 Cole's Early—Best for home and garden.
 Kleckley Sweets—One of the finest.

SPINACH

Packet 5c; 1 oz. 15c; ¼ lb. 35c;
 1 lb. 75c, prepaid.
 Long Season—A warm weather variety.

ONIONS

Packet 10c; ½ oz. 30c; 1 oz. 50c;
 ¼ lb. \$1.00; 1 lb. \$3.50, prepaid.
 Southport White Globe—Mild, good shipper.
 Southport Red Globe—Medium size.
 Danvers Yellow Globe—Extra large.
 Mammoth Prizetaker—Similar to Bermudas.
 American Silver Skin—Pickling Onion.

PARSNIP

Packet 10c; 1 oz. 30c; ¼ lb. 55c;
 1 lb. \$1.75, prepaid.
 Long Hollow Crown—A standard variety.

VEGETABLE OYSTER

Packet 10c; 1 oz. 30c; ¼ lb. 80c.

TURNIP

Packet 5c; 1 oz. 15c; ¼ lb. 35c.
 Purple-Top White Globe—For table.

RUTABAGA (SWEDE TURNIP)

Used principally for stock feeding.
 Imperial Purple-Top Yellow—Large; yellow with purple top; one of the best.
 Packet 5c; 1 oz. 15c; ¼ lb. 35c;
 1 lb. \$1.00, prepaid.

GARDEN PEAS

Packet 10c; ½ lb. 30c; 1 lb. 50c, prepaid.
 Nott's Excelsior—Early free bearer.
 Thomas Laxton—Extra early.
 Extra-early Premium Gem—Favorite, very productive, pods large and well filled.
 Telephone—Standard crop variety.
 Champion of England—A late variety.

PEPPER

Packet 10c; ½ oz. 40c; 1 oz. 65c.
 Chinese Giant—Largest bright scarlet.
 Large Bell, or Bull Nose—Quite early.
 Long Red Cayenne—Late; fruit small, cone shaped, bright scarlet; hot.

RADISH

Packet 5c; 1 oz. 15c; ¼ lb. 40c;
 1 lb. \$1.35, prepaid.
 White Icicle—Long, white, crisp and brittle.
 Early Scarlet Globe—Skin is rich, bright scarlet; flesh white, fine grained.
 Scarlet Turnip White Tip—Medium size, bright scarlet with a distinct white tip.
 Long Brightest Scarlet—Brilliant scarlet.

SQUASH

Packet 10c; 1 oz. 25c; ¼ lb. 60c;
 1 lb. \$1.75, prepaid.
 Mammoth Bush Summer Crookneck—Extra large, golden-yellow.
 Improved Hubbard—Extra heavy.

PUMPKIN

Sugar, or Pie—10 to 12 inches in diameter.
 Packet 10c; 1 oz. 20c; ¼ lb. 45c;
 1 lb. \$1.40, prepaid.

TOMATO

Packet 10c; ½ oz. 20c; 1 oz. 35c;
 ¼ lb. \$1.00; 1 lb. \$3.50, prepaid.
 Bonney Best—Desirable for market.
 Dwarf Champion—Fruits medium size.
 Improved Stone—Desirable for canning.
 John Baer—Among the first earlies.
 Ponderosa—Possibly the largest of all varieties, often weighing three pounds each; solid, meaty, few seeds; reddish-purple.
 Packet 10c; 1 oz. 50c; ¼ lb. \$2.00;
 1 lb. \$6.00, prepaid.

Flower Seed Department

We offer only the very best varieties. Our seed is absolutely fresh 1924 stock, true to name. Postage on seeds prepaid on packet, oz. and lbs. except where otherwise noted.

ASTERS

Packet 15c; 2 for 25c. Mixed colors, packet 15c; 2 for 25c. Aster Varieties.

AMERICAN BEAUTY ASTER IMPERIAL ASTERS

Lavender	Rose	Blue
Daybreak-pink	Purity	White

NEW ASTER, HEART OF FRANCE—red.

ROYAL ASTER

White, Lavender, Rose, Shell-Pink, Purple

LATE BRANCHING ASTERS

Snow-White, Lavender, Rose, Shell-Pink, Purple

KING ASTERS

Violet, Lavender, Rose, Pink, White, Crimson

ROCHESTER ASTER

Lavender, White, Pink, Violet

CANDYTUFT

Mixed varieties in 6 colors—Packet 5c; ½ oz. 25c; 1 oz. 40c.

ALYSSUM

Packet 10c; ¼ oz. 25c.		
Sweet	Little Gem	Gold Dust

EARLY GIANT-FLOWERING

COSMOS

Packet 10c; Mixed Colors, packet 10c.		
White	Crimson	Pink

BALSAM (LADY SLIPPER)

Mixed Colors. Packet 10c.

CALLIOPSIS Mixed Colors. Packet 10c.

CARDINAL CLIMBER Packet 15c.

HELIOTROPE. Packet 10c.

CARNATIONS. Mixed Colors. Packet 10c.

SNAPDRAGONS

Packet 10c. Mixed Colors. Packet 10c.
Brilliant Red, Silver, Pink, Yellow, White

MARIGOLD

Mixed Varieties. Packet 5c; ¼ oz. 25c.
African French

VERBENA. Packet 10c ½ oz. 30c.

Hybrida—Mammoth Varieties, Mixed.

MARVEL OF PERU

Mixed Colors. Packet 5c; ½ oz. 20c.
Mignonette. Packet 5c; ½ oz. 20c.

FORGET-ME-NOT. Mixed varieties. Packet 10c.

Alpestris—Packet 10c. Palustris—Packet 15c.

Alpestris, Indigo Blue—Packet 10c.

Perfection—Packet 20c.

NIGELLA—Mixed Colors. Packet 5c; ¼ oz. 15c.

PANSIES

Mastodon Mixture—Packet 25c; 1/16 oz. 85c.

Large-flowered Mixed—Packet 15c; 1/16 oz. 50c.

PETUNIA—Single Mixed—Packet 10c.

POPPIES

Peony-flowered, Double, Mixed—Packet 10c; ¼ oz. 20c.

Single Mixed—Packet 5c; ¼ oz. 20c.

Salpiglossis or Velvet Trumpet Packet 15c.

Mixed Colors—Packet 10c.

SUMMER CYPRESS—Packet 5c; ¼ oz. 20c.

Dwarf Chrysanthemum Sunflower—Packet 10c.

COLUMBINE

Caerulea—Packet 10c.

Long-spurred Hybrids—Packet 15c.

Double Varieties, Mixed—Packet 10c.

SPENCER ORCHID-FLOWERING SWEET PEAS

All Colors Mixed—Packet 10c; ½ oz. 20c; 1 oz. 35c; ¼ lb. \$1.00; 1 lb. \$3.00.

Grandiflora Mixed—Includes only the best of the older varieties of Sweet Peas. Packet 5c; 1 oz. 15c; ¼ lb. 40c; 1 lb. \$1.40.

SALVIA—SCARLET SAGE

Packet 10c; ½ oz. 50c.

Bonfire (Clara Bedman) Splendens

BACHELOR'S BUTTON

Mixed Single and Double—Packet 5c.

NASTURTIUMS, CLIMBING and Dwarf Packet 5c; 1 oz. 20c; ¼ lb. 60c.

ZINNIA—Giant Double-Curled and Crested
Mixed colors—Packet 15c.

STRAW FLOWER (or Helichrysum)

Single Mixed Colors—Packet 10c; ¼ oz. 35c.

Fire Ball—Crimson. **Golden Ball**—Yellow.

Silver Ball—white. **Rose Queen**—rose.

Salmon Queen—pink. **Violet Queen**—violet.

FLOWERING PERENNIALS

COREOPSIS—Packet 10c; ¼ oz. 50c.

HOLLYHOCKS—Mixed Colors—Packet 10c.

Baby's Breath—Packet 10c.

PERENNIAL PEAS Mixed—Packet 10c.

SHASTA DAISY—Packet 10c.

SWEET WILLIAM—Double Packet 10c.

Orientele POPPY—Packet 10c.

PRIMROSE Vulgaria—Packet 10c.

Testimonials From Satisfied Customers

Great Barrington, Mass., R. F. D. 3
May 14, 1924

Mr. Allen L. Wood,

Dear Sir—I received the Rose bushes in fine condition and they are splendid. I want to thank you for filling my order so promptly. You will hear from me again.

Yours respectfully,

(Signed) MRS. H. P. LORING.

North Derby, Vt., June 9, 1924

Mr. Allen L. Wood, Rochester, N. Y.

Dear Sir—I am in receipt of your letter of the 3rd. I would like to say that I received my trees the 9th all O. K. Planted them the same day. I think they are the best trees I ever bought. Wish to thank you for sending me such nice promising trees. You can depend on my future orders.

Very truly yours,

(Signed) R. A. REDIKER.

Yonkers, N. Y., April 17, 1924

Mr. Allen L. Wood, Rochester, N. Y.

Dear Sir—The trees and vines arrived April 11th, in good condition. They look strong and sturdy.

Sincerely yours,

(Signed) GEO. H. MAUDLIN.

Jackson, Mich., May 27, 1924

Allen L. Wood, Rochester, N. Y.

Dear Sir—Have intended to write you to let you know I received the nursery stock ordered of you in fine shape and planted same at once.

Fruit trees are all leafed out.

Thanking you I am,

Yours truly,

(Signed) LYMAN H. HILL.

Newark, N. J., April 14, 1924

Woodlawn Nurseries, Rochester, N. Y.

Gentlemen—The order which I sent to you on April 2nd arrived on April 9th.

I sure was surprised at the nice strong trees I got and more so at the quick delivery. I had the trees on Tuesday and Wednesday I received your letter saying you had shipped them.

Now if only they grow I will be more pleased than words can tell.

I thank you so much for the quick delivery and shall tell my friends about it.

Yours truly,

(Signed) MRS. M. ECKERT.

Westbrookville, N. Y., April 19, 1924

Woodlawn Nurseries, Rochester, N. Y.

Sirs—Yours of the 12th received, my order came a day before your letter and were transplanted when I received it.

We are very well pleased with our stock and will give it very good care.

Sincerely,

(Signed) JULIA E. YOUNG.

Oradell, N. J., April 28th, 1924

Mr. Allen L. Wood, Rochester, N. Y.

Dear Sir—Received consignment of trees, etc., in good shape and am pleased at the good looking stock.

Yours respectfully,

(Signed) C. BROWER.

Allentown, Pa., R. F. D. 1, April 24, 1924

Woodlawn Nurseries, Rochester, N. Y.

Gentlemen—I received your letter yesterday and saw that it did not reach me the first time. I received the stock which I ordered from you a few weeks ago. Everything was alright and I planted it soon after I received it.

Yours truly,

(Signed) ALVIN J. HAUSMAN.

New York City, N. Y., April 12, 1924

Mr. Allen L. Wood, Rochester, N. Y.

Dear Sir—We have received everything in fine condition. We were surprised when we saw such fine trees and hedge. We are sure that everything will be successful. We also thank you for that wonderful little booklet on how to plant. We will remember you next season and recommend you whenever we can.

Thanking you,

(Signed)

A. DONA.
J. MARINO.

Altamont, N. Y., April 15th, 1924

Mr. Allen L. Wood,

Sir—Received the shipment of trees, etc., which I ordered and am well pleased with all. Everything was in fine condition and I want to thank you for your careful attention to same.

Very truly yours,

(Signed) MRS. L. A. CROUNSE.

Central Islip, N. Y., April 16, 1924

Mr. Allen L. Wood,

Woodlawn Nurseries, Rochester, N. Y.

Dear Sir—Received the recent order of fruit trees and am well pleased with them also your promptness and your fine way of packing.

Since my order was sent from a friend's catalog would ask you to please forward me one.

Respectfully,

(Signed)

CHRIS WOHLFORTH.

Knowlesville, N. Y.

Mr. Allen L. Wood,

Dear Sir—I have received my 125 California Privet. They are wonderful plants, much better than I expected, and I will certainly send for all my plants hereafter to Woodlawn Nurseries.

A number of my neighbors have seen the plants and have asked for your address. I like them so well that I want to plant another hedge. Please send me 75 more bushes of the California Privet.

Yours truly,

(Signed) MRS. R. B. ACHILLES.

Point Aux Trembles, P. Q., May 14, 1924

Woodlawn Nurseries, Rochester, N. Y.


Gentlemen—Stock received and I was particularly well pleased with it on arrival, which had that healthy appearance that gladdens the heart of the grower. Would like to compliment you particularly on the packing which was very thorough and saved the day. In spite of delay the moss in which the roots were packed was still damp and good for several days more if necessary.

Please count me one of your satisfied customers.

Yours very truly,

(Signed)

OLIVER M. BROOKS.



HARDY VINES

- | | <i>Each</i> |
|-------------------------------|-------------|
| 1—Clematis Mme. Ed. Andre | \$.75 |
| 2—Clematis Paniculata . . . | .50 |
| 3—Wistaria Chinese Purple . . | .75 |
| 4—Clematis Jackmanni . . . | .75 |
| 5—Honeysuckle Hall's Japan | .50 |
| 6—Virginia Creeper | .75 |

See pages 38-39



Our Landscape Service will be able to solve your planting problems, no matter how trifling or difficult they may be. A competent architect is in charge of this Service

Address: Landscape Department