

F 574
.MB C9
Copy 1

Cutter, John Milton ed

Cutter's Official Guide to MOUNT CLEMENS, MICH.

AND ITS WORLD FAMOUS MINERAL BATHS

Published by Chas. Cutter & Son

18 93



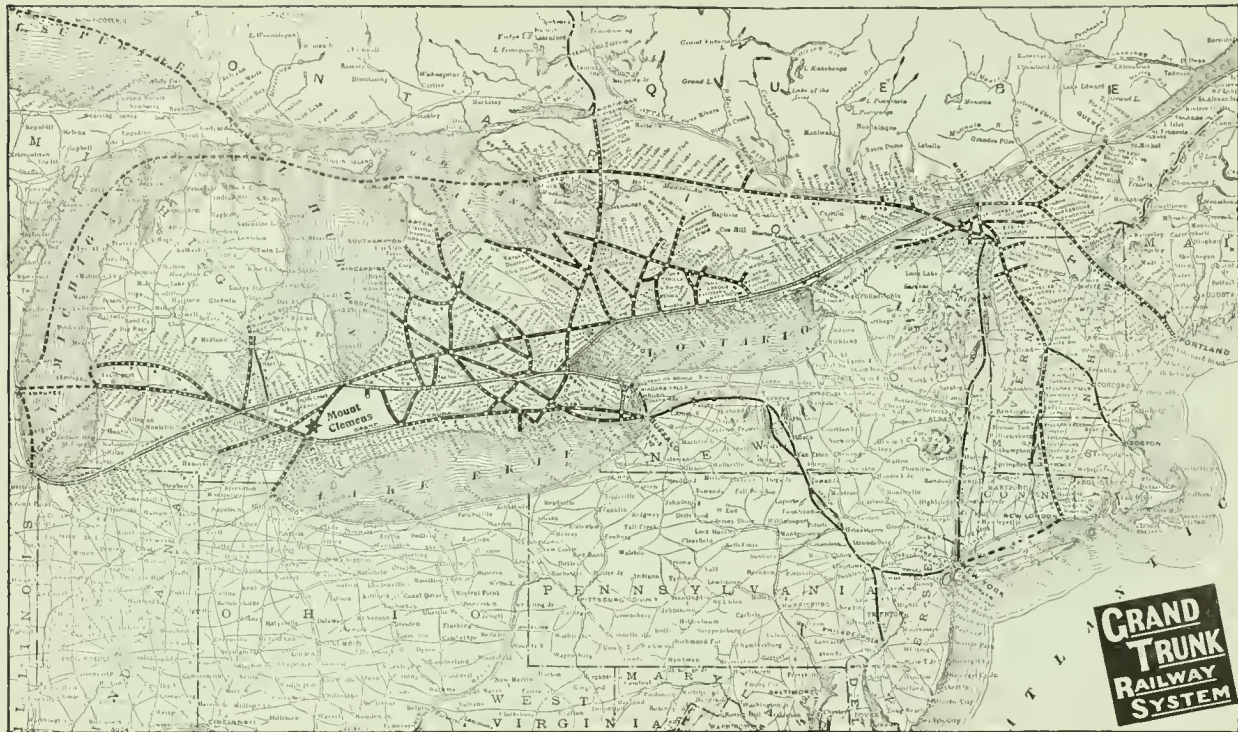
20th Edition



19 14



480,000



B. 20
©CIA357990

no 1

Cutter's Official Guide to Mount Clemens

AND · ITS · WORLD-FAMOUS · MINERAL · BATHS

Published by Chas. Cutter & Son. Edited and Compiled by John Milton Cutter

Early History

THE earliest white settlement on the Clinton River was located half a mile west of the city limits of Mount Clemens, and later became the town of Frederick. It was established by the Moravian missionaries in the year 1782 (July 21). The Moravians date their origin back to the time of John Huss—1457. In 1741 they were expelled from their seat in Germany and immigrated to America, first settling in Bethlehem, Pa., and later establishing several other missions throughout the wilderness. One of these was in Tuscarawas County, Ohio, numbering over one hundred missionaries, who were massacred in 1781 by order of British officers on account of their sympathy with America in its war for independence. The survivors came to Detroit for protection, later embarking in canoes and coming up the Clinton River, then known as the Huron River, and establishing the above-mentioned settlement, which they named New Ganadenhutzen. In 1786 they numbered 140, and had erected thirty huts and a chapel. The last of the original Moravians was Richard Connor, who lived at the settlement until his death, April 17, 1808.

The site of the present city of Mount Clemens, which was founded by Judge Christian Clemens in 1795, later absorbed all the other settlements in the vicinity on account of its ideal location for a city and also on account of being at the head of navigation on the Clinton River.

It was first platted in 1818, and on January 15 of that year, Governor Cass laid out the county of Macomb and established Mount Clemens as its seat of justice.

About 1870 the great *Mineral Waters with their Medicinal Properties were discovered, which has resulted in some of the World's Greatest Bathing Establishments being erected here and in Mount Clemens taking its place beside the World's Great Health Resorts.*

[The editor is indebted to Mr. F. Harold Hayward for the above historical data.]



Moravian Monument

F374
1889

Biography of Charles Cutter

Born August 24, 1837. Died October 15, 1912



"A descendant of John Cutter, of Lexington, Mass., who was a member of the famous 'Minute-Men' in the Revolutionary War, the junior son of Charles Nelson Cutter, of New York City, a wholesale dry goods merchant, under the firm name of Cutter & Phelps, Charles N. Cutter was born in New York City on Aug. 24, 1837. He was married to Belle S. Johnson, of Boston, Mass., on Dec. 11, 1865. Was engaged in the real estate business in Council Bluffs, Ia., and Omaha, Nebr.; was later in business at Decatur, Ill. He was a member of the original 'Pike's Peakers,' who crossed the plains to 'Pike's Peak or Bust.' Was at St. Joseph, Mo., for two years, but returned to New York City after the Civil War, where he represented a large manufacturing company. Later he established a store at Lewiston, Me., and Louisville, Ky. He returned to Boston, Mass., and engaged in the sewing machine business at 265 Washington St., under the firm name of Willard & Cutter."

(The above is his biography as printed in the "Book of the Cutter Family," published about 1870.)

In 1871 he removed to Carthage, Mo., and two years later came to Hot Springs, Ark., on account of bad health. He was so greatly benefited that in the following year, 1874, he decided to make Hot Springs his permanent home, and in that year, realizing the worth of these famous hot waters, he established the pioneer advertising medium for this or any other resort. The first edition of "Cutter's Guide" was issued in 1874, and attracted a great deal of attention in this State and throughout the country. This publication has grown both in influence and size, the total number of copies issued up to 1911 being 865,000. "Cutter's Official Guide to Hot Springs" has a circulation throughout the civilized world. Among his other best-known publications is "Cutter's Guide to Mount Clemens, Mich.," having a total circulation of 480,000 copies issued during the past twenty-one years. Other Guides and Souvenirs are Niagara Falls, Cambridge Springs, Mineral Wells, Eureka Springs, Mobile, Ala., Pan-American Exposition, and World's Fair, St. Louis.

He raised a family of nine children. Six of them are living—Clarence W., De Witt, John Milton, May Belle, Mary and Henrietta Cutter.

Charles Cutter was a life-long Democrat, but never sought a political office. He was for many years a member of the Hot Springs Masonic Lodge No. 62. (Since his death a set of resolutions paying a tribute to his great work in exploiting this resort, and to his character and life as a Mason, was adopted by this lodge.)

His death occurred at Hot Springs, Oct. 15, 1912, at the age of seventy-five years. Deceased is survived by his wife, Belle S. Cutter.

John Milton Cutter, the junior member of the firm of Cutter & Son, will continue the publishing business so well established by his late father.



CHARLES CUTTER,
Founder of "Cutter's Guide"

Mount Clemens' Famous Mineral Waters

THE mineral waters of Mount Clemens have established their reputation upon a firm and lasting foundation. Their medicinal virtues, and the numerous and wonderful cures effected by their judicious use, are marvelous and almost beyond comparison.

They are the strongest mineral waters in use, and we call attention to and advise a careful study of the analyses published of these remarkable mineral waters.

These curative waters are secured from deep wells, though they are frequently referred to as springs. They range in depth from 800 to 1,300 feet, and the deeper the well, the stronger is the mineral water obtained; but the increased strength is principally in sodium (common salt).

The first well was drilled in 1865, by a company organized for the purpose of prospecting for oil. It is said that oil and gas experts consider that the local indications are excellent for both of these illuminating properties and predict that each will be found when sufficient depth has been reached. Gas in considerable quantities is found in all of the deep wells.

Very fortunately, the medicinal virtues of this valuable mineral water were discovered while the manufacture of salt was in progress.

Several well-known citizens took thermal salt baths in the salt vats and improvised bath tubs, and very remarkable cures were effected in cases of eczema, neuralgia and rheumatism.

Dr. Abner Hayward was the pioneer physician in recognizing the virtues of the water as a healing agency with its great medicinal properties, and was the first

to use the water in the treatment of his patients who had rheumatism and skin diseases.

His first patient, Mrs. Tedman, of Romeo, was given the sulpho-saline baths at his residence in a rubber bath tub and cured of rheumatism. This was the first instance of any person bathing under the direction of a physician. Dr. Hayward still lives in Mount Clemens, at the corner of Cass and North avenues, at the ripe age of eighty-five years, and is highly respected by the community. Dr. Hayward is owner of the well-known Athenian Springs, which are located at his residence.



Dr. Abner Hayward

Mr. F. Harold Hayward, the well-known artist, is a son of Dr. Hayward, and also resides at Mount Clemens.

Little progress was made until a regular bath house was erected and hotel accommodations provided. These were completed in 1873, the Original Bath House and the Avery Hotel being the first to supply the demand for baths, board and lodging for invalid visitors; and this date is really the starting-point of Mount Clemens as a health resort. These were built by Dr. Henry Taylor, he being assisted by local capitalists who desired to give these waters a fair trial. The reputation, growth and popularity of Mount Clemens have increased annually.

The World-Famous Mineral Baths

The mineral baths of Mount Clemens have been proved conclusively to be the strongest in use, from the fact that the mineral salts contained in one Mount Clemens bath (sixty-five gallons of water) weigh one hundred and twenty-five pounds, five and three-fourths ounces (125 pounds, 5¾ ounces) as determined by John Meyers, chemist. Their efficiency in the treatment of all forms of rheumatism is without a superior.

The baths at Mount Clemens are administered with more care and attention than at any other bathing place we know of. Engagements are made at the office of the bath house for the exact time the invalid desires to bathe, or can make an appointment. First to come makes choice of time and attendants, and no attendant is allowed to treat more than one person at a time. The time allowed for each bath is one-half hour. Of course, occasionally a longer bath is given, but usually they average about that length of time; frequently a few minutes less.

Most of the time the invalid is in the bath tub he is being worked upon by the attendant, especially those afflicted with rheumatism, paralysis and kindred troubles. Fifteen minutes is the average time occupied in the bath tub, and after the bath, a thorough drying and rubbing is administered, after which sufficient time is spent in the cooling room to reduce the heat of the body to its normal condition as nearly as possible before the invalid is allowed to venture out of doors. All danger of taking cold is

guarded against by this important precaution. No invalid should take a hot bath in these mineral waters without first consulting a resident physician. Medical and physical examination of the invalid before bathing, unless his condition is well known, is imperative. No two cases are exactly alike, and therefore the baths and medical treatment should vary accordingly, under competent medical supervision. These mineral waters are very potent for good if properly and intelligently applied, but dangerous when used recklessly.

Diseases Treated

Rheumatic affections, embracing Inflammatory and Chronic Rheumatism, Stiffened Joints, Sciatica, Lumbago and all forms of Muscular Rheumatism and Gout.

Skin diseases, such as Eczema, Salt Rheum, Psoriasis, Erysipelas and Scrofula, in whatever form.

Lead and Mercurial Poisoning, Bilioussness and Liver Troubles, Paralysis, Epilepsy, and Paralysis following Cerebro-Spinal Meningitis, Neuralgia, Insomnia, Hysteria, Alcoholism, St. Vitus' Dance, etc.

Female diseases, known as Leucorrhœa (whites), Dysmenorrhœa (painful menstruation), Amenorrhœa (suppressed menses), General Debility, Nervous Prostration, Protracted Convalescence following exhausting diseases.

Catarrhal difficulties, Bleeding of the Kidneys, Catarrh of the Bladder, Diabetes, Dyspepsia, Constipation, Sick-Headache, etc.



City Water Works and Park

All-the-Year-Round Resort

Mount Clemens has long been looked upon as a summer resort only, but of late years the improvements made in the best hotels and bathing houses by steam heating, etc., have made the houses so comfortable that baths are given in the coldest weather, and with proper and prudent precaution on the part of bathers, without the least danger of taking cold. The degree of heat is equalized all over these houses, and even in the passageways connecting the hotels with the Clementine, Olympia, Fountain and Arctusa Bath Houses, the same degree of heat is maintained by steam radiators. Thus the baths are given in the most severe and disagreeable weather as well as in the most pleasant season of the year.

It is claimed by many that cures are more readily obtained in winter than at any other season, because the invalids make a business of getting well, remain indoors, take better care of themselves and bathe regularly. In summer they fish, sail on the river and lake, and otherwise expose themselves, and frequently take cold and thus retard improvement. Therefore, many cases of rheumatism are cured in winter in a short time that possibly would not be cured at all if the invalid did not do his part toward recovery.

It is true that this place has only been considered a health resort, and as such has become justly noted, and it will always attract the largest number because its mineral waters and the baths cure so many of the ills afflicting the human family. Added to the great variety of sports and amusements offered, is the fact that the opportunities for pleasure are numerous in and about Mount Clemens, and the citizens cater to the fancies of all classes. This makes Mount Clemens a very desirable "Health and Pleasure Resort all the year round."

How to Reach Mount Clemens

As Mount Clemens is twenty-two miles from Detroit, Mich., and is reached by steam only by the Grand Trunk Railway, the reader can easily see, by consulting a railroad map, how he can best reach it, via Detroit, from his own home. We can almost say that any railroad or steamboat line that will lead you to Detroit will take you to Mount Clemens, though transfer at Detroit is necessary on all lines excepting the Grand Trunk. But when you reach Detroit you are nearly there, and any of the five daily passenger trains will land you at Mount Clemens in forty or fifty minutes.

The Rapid Railway and the Lake Shore from Detroit are two of the best electric roads in the United States, and make regular trips every half hour. Fare, 25 cents. Time, one hour to an hour and a half.

Expenses, Etc.

The expenses are lower at Mount Clemens than at any other noted health resort in the United States. The following items of expense will enable anyone contemplating a visit to this place to approximate all his necessary outlay:

Monthly Expenses

| | |
|---|---------------------|
| Board, per month..... | \$24.00 to \$100.00 |
| Baths (15 to 30)..... | 7.50 to 15.00 |
| Attendant (according to liberality of bather, regular fee 25c per bath)..... | 3.75 to 15.00 |
| Physician | 10.00 to 25.00 |
| Medicine | 1.75 to 10.00 |
| Totals..... | \$47.00 to \$165.00 |



The Public Library



Mount Clemens City Park

City of Mount Clemens

Mount Clemens is one of the most beautiful cities in Michigan, a State noted for having a large number that properly come under this class. Its lovely shaded streets,

lined with elegant residences of prosperous citizens and the cozy cottage houses of the working people, all combine to make the city a desirable place of residence and an exceedingly pleasant place for the general traveler to visit.

The business of the city as a mercantile center is somewhat retarded by its close proximity to the city of Detroit, a very beautiful place, and one of the most prosperous and enterprising of its size in the United States.

However, all kinds of trade are represented in the retail line, and well-assorted stocks of goods are to be found in the handsome, commodious storerooms of Mount Clemens, where they are sold at reasonable prices, which competition with the merchants of its neighboring city necessitates.

The city is growing and is very prosperous, and while its manufacturing interests are increasing, its main reliance will always be upon the bathing and hotel business, because Mount Clemens is the greatest health resort in the Northern States and may become the most important in the Union. Its future growth and prosperity very largely depend upon the enterprise of its own citizens.

The city has waterworks, gas and electric lights, electric street cars on the principal streets, which connect with all trains and pass all the principal hotels, boarding houses and bath houses.

A company has recently been formed to bore for oil and gas about two miles from the city. If the latter is found, it will be utilized for fuel to operate a number of factories that will locate here.



Photo by Hank.

U. S. Government Postoffice

To Obtain Additional Copies of This "Guide"

CUTTER'S OFFICIAL GUIDE TO MOUNT CLEMENS can be obtained free by patrons of any hotel, bath house, spring company or physician whose ad or card appears in this publication. You will confer a favor on your sick friend or relative if you mail or take him a copy of this GUIDE.

CHAS. CUTTER & SON, *Publishers,*
Mount Clemens, Mich., and Hot Springs, Ark.

Amuse- ments

The visitor will find many kinds of amusements to entertain him during his stay. There is one good theater where vaudeville and moving pictures are given, and several picture shows. Baseball is played by good amateur teams on Saturday and Sunday. The model roads offer good motoring and a first-class garage service is maintained here to supply the demand. There are many interesting trips to be made in a few miles of Mount Clemens, while Detroit, twenty miles away, offers many lines of amusements, including League baseball, racing, etc.

Boating and Fishing

The Clinton River, which circles through the city, affords splendid boating, and Lake St. Clair, which is reached in seven miles, is our fishing grounds. All kinds

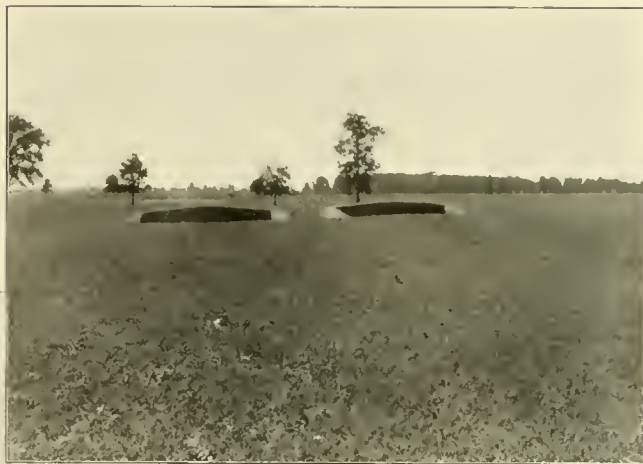


of pleasure and excursion boats make regular trips to the Club Houses near the mouth of the river and into the lake for fishing. Sometimes the fishing is very fine, and the writer has taken many trips to enjoy this sport. The steamer ride down the river, across the lake, through the Government Canal past the "Flats," frequently called the "Venus of America," to Walpool Indian reservation and return, is certainly very enjoyable, and one all visitors to Mount Clemens should take.

The Riverview Golf Links

Mount Clemens at last has a good nine-hole golf course, which has been so much needed at this resort, and can now offer visitors this popular pastime that has become such a fad among patrons of health and pleasure resorts throughout the United States.

The course is located on the Clinton River, three-quarters of a mile from the center of the city, and within easy walking distance of the hotels. It can be reached by the river road on the front or Crocker Boulevard and Lake Shore Electric Line on the rear. The "gallery" can fol-



General View of Course

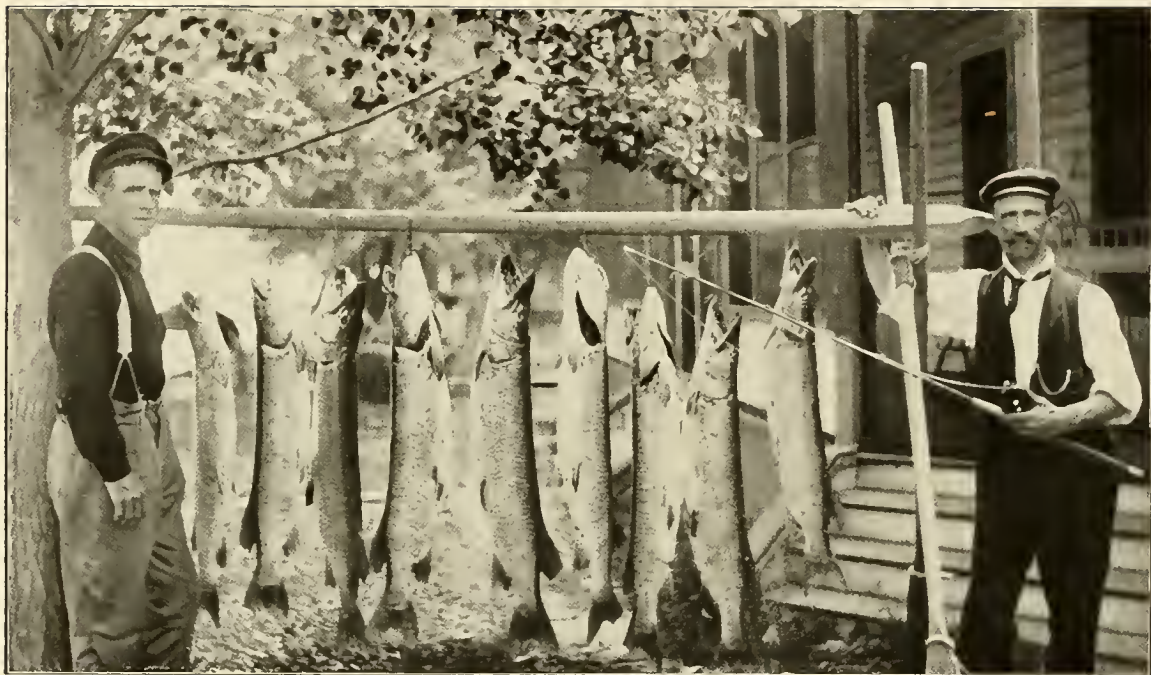


No. 6 Green

low the players in their autos, as a road runs around on the outskirts of the golf course.

Mr. W. H. Lewis, late of North Deven Royal Golf Club, Westward Ho, England, is the professional in charge.

Rates for playing are \$1 per day, \$5 per week, or \$12.50 per month. Tickets can be procured from the Park Hotel, Arethusa Bath House and other hotels and bath houses subscribing to the golf course; also from Mr. T. J. Shoemaker, proprietor and manager of the golf links, 82 South Gratiot Ave., Mount Clemens, Mich.



Caught Near Quiggle's Club-House on the North Channel of the St. Clair River. Twenty-One of These Fish were Caught in Ten Days—Smallest, 20 lbs., the Largest, 37½ lbs.



The Busy Block on Cass Avenue in the "Good Old Summer Time"

The Clementine Bath House



THIS is one of the most elegant bath houses in the United States, and is deservedly popular and successful. Its appointments are first-class and modern. It is kept scrupulously neat and clean and always up-to-date, and its business has increased annually, and during the last busy season its capacity was taxed to almost its full limit.

This splendid property has been purchased by Mr. John R. Murphy, of Allegheny, Pa., who for over eight years was chief of police and director of public safety of that, his native city. He has organized a stock company, Clementine Bath Co., of which he is president.

The Clementine deserves its reputation, and its patrons are of the very best class of visitors and citizens.

Every kind of bath given in this city is given at the Clementine, including tub, douche, spray and vapor.

Connected with each bath room is a dressing and cooling room, provided with a lounge or couch, upon which a nap or rest may be had after the bath. The mineral water supply is obtained from a well drilled especially for this bath house, and is situated on an adjacent lot, entirely separate, where are located the engines, boilers, pumps and water-tanks, and the only connection is by pipes, which convey the mineral water and the steam heat used.

The building is not only handsome in its construction, but is commodious and conveniently arranged.

The front part of the building is two stories high, with lofty ceilings. On the ground floor is a large office, with its handsome tile floor and beautiful finish of natural oak. On the left of the office are the ladies' parlor and cooling

rooms. The former is carpeted and furnished equal to the average private parlor. On the right are the gentlemen's parlors, reading and cooling rooms; neatly finished, in keeping with the office and rooms, entirely of oak.

The Clementine Hotel and Capron House are connected with this bath house: the former by doorway and the latter by hallway. The Sherman House and Eastman Hotel are also located opposite.

The Clementine is also convenient to several smaller hotels and boarding houses and is extensively patronized by their boarders. They are the Arlington, the Antlers, the Woodbine, the Chase Cottage, the Tennessee, the Walnut and others.

The attendants, both male and female, are those who have had long experience, and they are always kind and obliging to their invalid patrons. They prepare the bath, attend to the wants of the bathers, massage and manipulate the patients while in the bath, and rub and dry them after the bath; for these services the attendant's fee is 25 cents. The tickets for mineral baths are 50 cents; vapor, 75 cents; foot-baths, 25 cents; fresh-water bath, 25 cents.

Mr. Coursin, the builder and former owner, was fortunate in the selection of the location for the Clementine, and strangers in Mount Clemens cannot but appreciate the beautiful scene that greets the eye from the bath house. Cass Avenue, upon which the Clementine fronts, is a restful picture in summer time. Hundreds of tall shade trees line the avenue and entwine their branches in magnificent arches of Nature's green above the driveway. The Clementine is on the line of the electric railway leading from the Grand Trunk Railway, is within one block of the City Hall and the business center of Mount Clemens and the Rapid and Lake Side Electric lines to Detroit and Port Huron.



The Clementine Bath House

Clementine Bath House

Exclusive Furnished Rooms

The second floor of the Clementine is divided into commodious and handsomely furnished rooms. The sleeping rooms are rented to those whose illness requires them to be handy to their bath, and others who prefer them separate from a hotel. The demand for sleeping accommodations has been so great that Mr. John R. Murphy, the owner and proprietor of the Clementine, is having plans drawn for two additional stories to the bath house, which will give accommodations for fifty more guests.



One of the Bed Rooms



Residence of John R. Murphy

The rooms will have hot and cold running water and every modern convenience. This extensive remodeling will extend to the bathing department, and many improvements that will meet with the approval of the host of patrons of the Clementine Bath House will be made. The two additional stories will add greatly to the appearance of the exterior of this beautiful bath house, with its wide verandas and ideal location. The bath house and furnished rooms upstairs are all under the same management. A cafe in connection is contemplated. For further information call or write

CLEMENTINE BATH HOUSE,
JOHN R. MURPHY, *Owner and Proprietor.*



The Office of the Clementine Bath House



Ladies' Bathing Department, Clementine Bath House



Gentlemen's Bathing Department, Clementine Bath House

Analysis of Clementine Well

McKEESPORT, PA., June 14, 1893.

Analysis of sample of mineral water taken from the Clementine Springs:

Figures represent grains per U. S. gallon.

Specific gravity, 1.1313.

Grains per Gal.

| | |
|---|-----------|
| Insoluble matter (Clay and Sulphide of Iron)..... | 433.536 |
| Hydrosulphate and Hyposulphate of Sodium..... | 11.960 |
| Sulphate of Lime..... | 59.970 |
| Sulphate Strontia | trace |
| Bicarbonate of Iron..... | 1.924 |
| Chloride of Calcium..... | 2827.606 |
| Chloride of Magnesium..... | 1228.002 |
| Chloride of Potassium..... | 1057.889 |
| Chloride of Sodium..... | 5684.255 |
| Chloride of Lithium..... | trace |
| Alumina | trace |
| Silica | 2.920 |
| Sulphur in suspension..... | trace |
| <hr/> | |
| Total..... | 10874.526 |

Sulphureted Hydrogen Gas, 9.910.

Carbonic Acid Gas, 3.457.

Respectfully submitted,

THEO. TONNELLE, *Chemist.*

Testimonials

Aug. 15, 1905.

DEAR SIR: After taking a course of baths at the Clementine Bath House for catarrh of the stomach and throat, I have been entirely cured of both. For six months before I went to Mount Clemens I could get no relief from my doctors, and lived on bread and milk. I can now eat three meals a day.

A. E. McDONALD, Wellsville, Ohio.

Having suffered greatly with inflammatory rheumatism from June 20 to Aug. 8, 1903, I came to Mount Clemens so crippled I was obliged to resort to wheel chairs to convey me to and from the bath house. I began taking baths at the Clementine, where I found everything new, neat and the attendants the best. After the first week I was entirely relieved of all rheumatic trouble. From my own experience, I have only the highest words of praise for the Clementine Bath House and the work it is doing.

J. A. WANN, Attorney, Canton, Ohio.

June 2, 1905.

Manager Clementine Bath Co.

DEAR SIR: Please permit me to tell you in a few words what the baths have done for me, and what I have seen them do for others. When I came to Mount Clemens, about ten weeks ago, every joint from my toes to my head was sore and stiff, and I could hardly expect to be cured in so short a time, as my case had been standing for over ten years. My toes on both feet had been stiff for five years, and during the ten years that I suffered I wasn't one minute, night or day, without pain, and I had taken so much medicine that my stomach was ruined; couldn't eat or sleep. I felt relief after the first bath, and continued to improve, every day gaining a little, till now I feel that I am cured; haven't got a pain nor ache; I eat well and sleep well and have gained seventy-one pounds.

I have seen men come here on cots, and to my great surprise saw them walking without even the aid of a cane in less than two weeks. I have seen in the closets of the different hotels hundreds of crutches and canes that have been left behind by those who were cured. I can't express my feelings sufficiently to thank you and your attendants for the many kindnesses I received at your hands, but wish you Godspeed, and anyone I see suffering from that dreadful pain, I will try to induce to come to Mount Clemens at once.

THOMAS W. EARLY,
1330 Albright Ave., Scranton, Pa.

B. P. O. E. Headquarters

For the benefit of members of the B. P. O. E. there can be found an Elks' register at Clementine Bath House, where visiting members can find the location of Elks grazing here.

Write for CUTTER'S GUIDE and other testimonials. All communications should be addressed to CLEMENTINE BATH CO.

JOHN R. MURPHY, *Owner and Proprietor.*



Exterior of the Baths of Arethusa

The Baths of Arethusa

One of the first questions most of our visitors ask about the name "Arethusa" is, "What does the name signify? From what is it derived?"

To answer this question to the satisfaction of our readers and ourselves, we have consulted four works upon classic myths and mythology, at our Public Library. We found enough to write a fascinating story of the "Beautiful Arethusa." But our space is limited, and it will be necessary for us to relate briefly the myths without giving any quotations:

Arethusa (from the Greek) was the fourth daughter of Atlas and Hesperus. There were seven girls of the Hesperides, the name given this family.

Arethusa was very beautiful and was fond of outdoor life, the woods and the chase. Once, on returning from the sport, tired and heated, she came to a sparkling stream, so unusually clear and pure and retired that it offered a splendid opportunity for a perfect bath. She timidly entered the water to her knees, and was so delighted that she threw aside her garments and sought the cooling and refreshing waters.



Interior of Bath Room, Baths of Arethusa



Lobby and Office of the Baths of Arethusa

While taking this bath she was attracted by an unusual murmur, and hastened to the bank of the stream, where she found she was pursued by Alpheus, the god of the stream, who besought her to remain. She fled and he followed; he was deeply in love with the beautiful Arethusa, but she spurned his affection, and in great fear she called upon Diana for protection. Diana, hearing her appeal, wrapped her in a



Ladies' Parlor, Baths of Arethusa



Gentlemen's Parlor, Baths of Arethusa

thick vapor, which thwarted the god of the stream, who still persisted and would not give up the search. However, before he could discover her, she was changed into a fountain of pure water, and at the will of her protector the earth parted and Arethusa, the beautiful girl, transformed into a pure, sparkling fountain stream, fled into the bowels of the earth.

This accounts for our deep wells. The myths say the stream came to the surface in Sicily, and we say, with equally good reasons, at Mount Clemens. Thus ends the myth story.

Our waters are not pure. They are the most highly mineralized waters in use; and while some, on account of this extreme depth, contain a little more sodium (common salt) than others,



Resting Room, the Arethusa



Interior of Bath Room, Baths of Arethusa

there is practically no difference, all containing the same curative qualities.

The Arethusa is the last bath house erected at Mount Clemens, and contains all of the very latest improvements and appliances obtainable.

For further information, write

THE ARETHUSA COMPANY,

WM. LEHNER, Secy., Mount Clemens, Mich.

The Arethusa Furnished Rooms

The Arethusa has twenty handsomely furnished rooms in the two stories over the offices and parlors. These rooms have all the accommodations to be found in any of the best European hotels, having stationary washstands, hot and cold water, steam heat, etc. All the rooms are equipped with a view to securing the highest degree of beauty, comfort and sanitation. These rooms are especially desirable for guests and bathers who wish to be convenient to their baths. The rates are no higher than those of equal advantage outside.

For further information write
THE ARETHUSA COMPANY,
Mount Clemens, Mich.
WM. LEHNER, *Secretary.*



Bed Room



The Fountain Bath House, C. H. and E. D. Meldrum, Proprietors

The Fountain Bath House

This large establishment has recently made very important improvements, including solid porcelain tubs, tile and mosaic floors, marble wainscoting and partitions, making the interior look like an entirely new house. It is the second largest in the city, and one of the largest in the United States, having fifty bath rooms, four cooling rooms, ladies' and gentlemen's parlors, physicians' offices and a rotunda or general reception room over twenty feet wide, fifty-six feet long, and with a ceiling twenty-four feet high. In the construction of the Fountain, especial attention was given to ventilation, a very important item in a bath house. The Fountain Bath House also contains seventy private cooling rooms, which assures perfect privacy to bathers. Extra large rooms and bath tubs are provided for those so badly crippled and deformed that it would be difficult or impossible to bathe in an ordinary tub or be conveniently handled in a small bath room. All the various kinds of baths administered at this resort can be had at the Fountain. A gymnasium is provided for all patrons. An extensive steam laundry is also provided for the thorough washing of bath robes, etc. The mineral water supplying this bath house is obtained from one of the deepest wells in the city, and is situated just back of the bath house and under the tall tower, but this building is entirely separate.

The price of baths is the same as at all the houses, being 50 cents for mineral water, 25 cents for mineral foot-bath, and 75 cents for mineral vapor. Fresh-water bath, 25 cents. Attendant's fee, 25 cents extra. The Fountain

Bath House is connected with the Clifton House, on same block, by an enclosed passageway, and also with the Fountain Hotel and the Crystal. The passageways are heated by steam, well lighted, and the return to the hotel after the bath can be made without exposure or danger of taking cold.

Analysis of the Fountain Bath House Well

BUFFALO, N. Y., Feb. 19, 1887.

R. O. Meldrum, Esq.:

DEAR SIR: The sample of water from Mount Clemens, Mich., placed in my hands for analysis, yields the following results, expressed in grains per gallon:

| | |
|----------------------------|-----------|
| Carbonate of Magnesia..... | .750 |
| Carbonate of Iron..... | 1.905 |
| Carbonate of Calcium..... | 1.300 |
| Chloride of Potassium..... | 3.666 |
| Chloride of Calcium..... | 1154.400 |
| Chloride of Magnesium..... | 851.800 |
| Chloride of Sodium..... | 11960.400 |
| Sulphate of Calcium..... | 82.111 |
| Iodide of Sodium..... | .065 |
| Bromide of Magnesium..... | 17.250 |
| Silica | 19.000 |
| Alumina | 9.000 |
| Total..... | |
| | 14101.847 |

Sulphureted Hydrogen Gas, 40.40 cubic inches.

Yours truly,

A. R. DAVIDSON, M. D.,
Prof. Med. Chem., Niagara University.



The Medea Hotel and Bath House

The Medea Hotel and Bath House

The new Medea Hotel is designed to meet the demands of a large and exclusive class of visitors who desire a thoroughly modern and roomy house with an attractive, central location.

Opening off the lobby are the bathing departments, ladies' parlor, dining room, ordinary, reading and writing rooms, buffet, barber shop, a public and private office, elevator and stairways.

All the hotel and bathrooms and passageways are so heated, lighted and ventilated and interconnected as to form a miniature health and pleasure resort at any and all seasons of the year.

The Medea Hotel is located in the center of the city, opposite the Court House and principal business houses. The interurban waiting-room is opposite our main entrance, and all cars stop in front of our door. The New Medea Hotel is modern, newly renovated and decorated. The bath house is located right in the hotel and you can go from your room to the bath house in your bath robe, if desired. The hotel is on the European plan, with rooms \$1 per day and upward. The cuisine is excellent. Club breakfasts are 35 cents and up. A 50-ct.-business-men's lunch is served from 12.00 to 2.00, and there is a la carte service all day at moderate prices. Surrounding the hotel are a number of smaller hotels and high-class boarding houses where rates may be secured from \$7 per week and up, and you can still receive the benefit of taking your baths at the Medea Bath House, *whose waters have made Mount Clemens famous*, and where bathers will receive the same thorough attention as if stopping in the hotel proper.

The Medea building is in every respect modern; is constructed of brick, stone and steel, and is practically fire-proof. It is located at the intersection of the two principal avenues of the city, and overlooking Court House

Square on the one side and the Clinton River on the other.

Every one of the 150 guest rooms commands a pleasant outside view, besides possessing every utility that careful foresight could provide. The rooms are extremely large and commodious, every one in the house having steam heat, hot and cold running water, a white-enameled stationary wash-stand, clothes closets, electric lights, and a long-distance telephone, giving free service to guests throughout the hotel and bath house. Many of the rooms are en suite with private bath and toilet, some with private toilet, while on each floor are two general lavatories, all equipped with a view to securing the very highest degree of beauty, comfort and sanitation. Guests may rest assured that the Medea will provide all the comforts and luxuries that a modern love of ease can suggest and the market can afford. Many of the attendants have been here for years and are familiar with the needs of health-seeking patrons. They are trained to give especial care and attention to all who do not care to bring along their own attendants.

At the Medea the baths may be taken as safely, comfortably and effectively in the coldest of winter weather as in the heat of summer.

The Medea Bath House

The justly celebrated Medea is the pioneer of Michigan mineral waters, being first in point of discovery, as well as first in number of successful treatments and in value of medicinal properties. It is strong in the confidence of the people, having been tested by time and approved by thousands of cures.

The Medea Water

Is strongly impregnated with salt and sulphur, standing first among the noted saline-sulphur springs of the world.



The Medea Dining Room

In calcic and magnesian chlorides it is remarkably rich, possessing over four hundred per cent more of these health-giving properties than any other waters. The presence of these acknowledged remedial agents to such an unusual extent renders the Medea baths exceptionally valuable in the treatment of rheumatism and skin diseases. A comparative view of the scientific analysis of the numerous health waters of this country and Europe shows the Medea to contain a much larger proportion of the chlorides, with the single exception of sodic (common salt), and about twenty-five per cent more iron and bromine than any coexisting water. And the very absence

of this excess of salt in the combination is accepted by those best acquainted with the water as one of its many elements of superiority.

The bath departments are fitted throughout with solid porcelain tubs of large size. The bath rooms are partitioned with white Italian marble and floored with vitreous tiling, consequently affording the highest degree of beauty, and at the same time giving the greatest sanitation obtainable.

For the accommodation of invalid guests, a corps of trained nurses is maintained, and their services can always be secured promptly and at reasonable rates.



Office and Lobby, Medea Hotel

Analysis of the Water

The waters of the Medea hold in solution a greater number of medicinal ingredients than any other water known to the science of hydropathy, as the following analysis will show:

| | | | |
|-------------------------|----------|-----------------------------|-----------|
| Sodium Chloride . . . | 5957.350 | Sodium Sulphite | 23.794 |
| Potassium Chloride.. | 437.823 | Lithium Chloride | 2.371 |
| Magnesium Chloride. | 636.200 | Ammonium Chloride. | 8.348 |
| Calcium Chloride . . . | 4128.530 | Sodium Biborate | 1.984 |
| Calcium Sulphate . . . | 144.430 | Ferrous Carbonate | 0.489 |
| Magnesium Carbonate | 0.070 | Ferrous Sulphide | 0.368 |
| Calcium Carbonate . . . | 0.910 | Silica | 28.090 |
| Magnesium Iodide . . . | 0.070 | Alumina | 42.070 |
| Magnesium Bromide . . | 8.540 | Total Solids in impe- | |
| Calcium Hyposulphite | 7.231 | rial gallon, grains. | 11428.618 |

Hydrogen Sulphide Gas 40 cubic inches
 Carbonic Acid Gas 40 cubic inches

After nearly a quarter of a century of successful ministering to the sick and afflicted the Medea Bath House claims to be without a peer as a health resort. It is the largest tub bath house in the world, having almost double the capacity of any similar institution, and facilities for the proper treatment of patients that exist nowhere else.

The hotel is now conducted on the European plan, prices ranging from \$1 per day up.

Price of Baths

| | |
|-------------------------------------|--------|
| Mineral without attendant | \$0.50 |
| Attendant | .25 |
| Fresh water | .25 |
| Mineral Vapor | .75 |

For further information address,
MEDEA HOTEL, MR. C. H. STIMSON, Manager.
 Mount Clemens, Mich.



Hotel Olympia and Bath House

Hotel Olympia, Mount Clemens' peerless hotel—all that the word implies—is centrally located on the site of the "Old Fenton" in connection with the famous Olympia Bath House. It offers its patrons the embodiment of all modern conveniences. Each room has private telephone and lavatory. There are rooms en suite with baths, rooms with toilet, and outside sleeping rooms; Otis elevator; ball and amusement room, billiard, pool and card rooms; Japanese tea room; sun parlors; manicuring, hair dressing and barber shops.

The elegance of its furnishings, the excellence of its cuisine and the perfection of its service, make it the exclusive hotel of the greatest health resort in the world.

Hotel Olympia is absolutely sanitary, the entire first floor being mosaic from lobby to kitchen. The second and third floors are covered with battleship linoleum and Persian rugs. *Carpets and all objectionable features have been entirely eliminated*, and all things conducive to good health carefully considered. Metal beds, correct Mission furniture; soft, Cathedral lighting, combined with artis-

tically restful coloring, make an environment that is necessary to all lovers of the beautiful.

If cleanliness appeals to you, the ABSOLUTE CLEANLINESS of Hotel Olympia will delight you.

Rates (American Plan)

ONE PERSON

| | |
|-------------------------|----------------|
| Room with Lavatory..... | \$3.50 per day |
| Room with Toilet..... | 4.00 per day |

TWO PERSONS

| | |
|-------------------------|---------------------------|
| Room with Lavatory..... | \$6.00 per day and upward |
| Room with Toilet..... | 7.00 per day and upward |

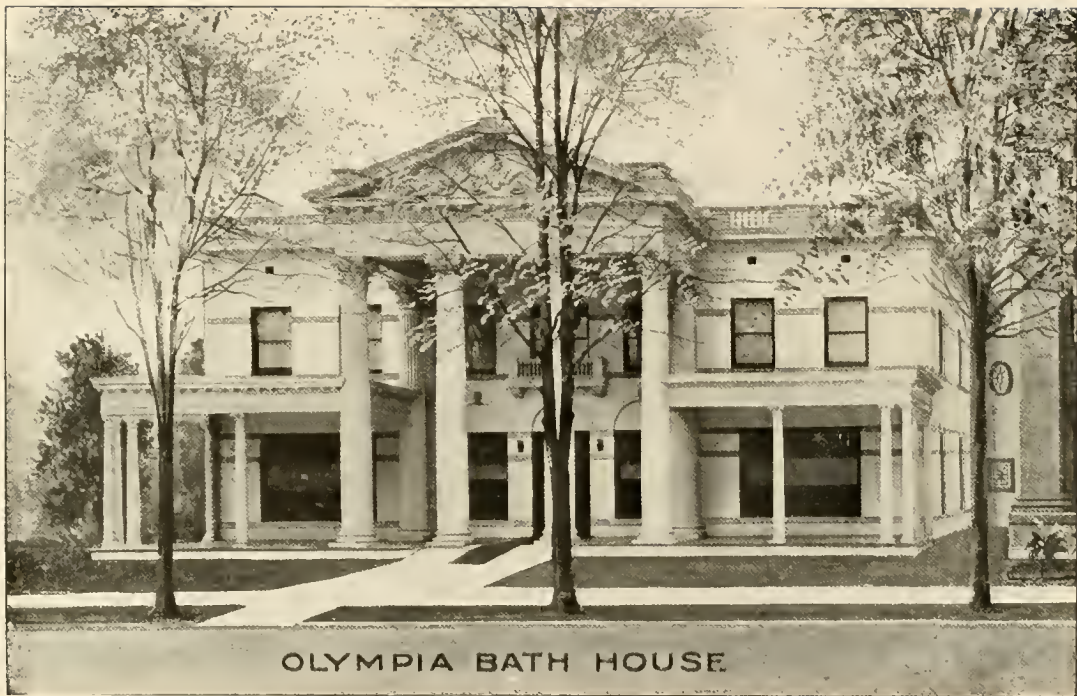
Suites, \$9.00 to \$15.00 per day (two persons).

Each room has private telephone and lavatory.

Hotel Olympia is in connection with the world-famous *Olympia Bath House*, which is open throughout the year, and patients will find the spring, fall and winter months the ideal time for bathing in this truly marvelous mineral water.

THOMAS E. MATTHEWS,
CHARLES H. PARSONS,

Proprietors.



OLYMPIA BATH HOUSE

Olympia Bath House

The Door to Health

The Olympia Bath House is the handsomest bathing establishment in Mount Clemens, which advantage has enabled its enterprising owners to adopt the latest and best of everything.

The exterior of the Olympia is enameled white brick, and its colonial style of architecture gives it a very handsome and commanding appearance.

The lower floor is entirely devoted to bathing, office and reception rooms. The women's department is under the supervision of a competent masseuse, and consists of reception, cooling and dressing rooms, bath halls and resting rooms. The men's department, of double the capacity, is located entirely separate from that of the women, and is the same in every detail. In both of these departments will be found individual lockers and the largest-sized, solid porcelain bath tubs.

Every kind of bath obtainable in Mount Clemens is given at the Olympia, at the same rates as charged at other bath houses.

There are many good boarding places for patients close to the Olympia Bath House, at rates from \$7 to \$10 a week.

Mineral Baths, 50 cents; Mineral Vapor Baths, 75 cents; Fresh-Water Baths, 25 cents; Attendant's Fee, 25 cents.

THOMAS E. MATTHEWS,

CHARLES H. PARSONS,

Proprietors.

Official Analysis of Mount Clemens Mineral Water

On file in Washington, D. C., and Berlin, Germany

| | | | | | | |
|---------------------|---|-----------------------|-------|-----|----------|----------------|
| Physical Character: | { | Temperature..... | 13.61 | G., | or 56.5° | Fahr. |
| | | Reaction..... | | | | Faint Alkaline |
| | | Specific Gravity..... | | | | 1.116 |

| CHEMICAL CONSTITUENTS | Grammes in 1000 C C M. or 1 Litre | Grains in One U. S. Gallon | Grains in One Imperi- al Gallon |
|----------------------------------|---|----------------------------------|---------------------------------------|
| Hydrogen Sulphide | 0.14620 | 8.53961 | 10.26071 |
| Hydrogen Selenide | 0.00018 | 0.01047 | 0.01263 |
| Hydrogen Telluride | 0.00027 | 0.01574 | 0.01898 |
| Carbonic Acid, free..... | 0.14878 | 8.69022 | 10.43172 |
| Carbonic Acid, half combined... | 0.03185 | 1.86033 | 2.23316 |
| Calcium Carbonate | 0.06568 | 3.83609 | 4.60675 |
| Magnesium Carbonate | 0.00061 | 0.03557 | 0.04266 |
| Ferrous Carbonate | 0.00596 | 0.34810 | 0.41784 |
| Cobaltous Carbonate | 0.00112 | 0.06530 | 0.07839 |
| Calcium Sulphate | 1.55960 | 91.09819 | 109.35327 |
| Calcium Hyposulphite | 0.13461 | 7.82620 | 9.43821 |
| Sodium Sulphite | 0.69579 | 40.64125 | 48.78549 |
| Sodium Selenite | 0.00533 | 0.31122 | 0.37371 |
| Sodium Tellurite | 0.00574 | 0.33529 | 0.40241 |
| Sodium Chloride | 97.81765 | 5713.65182 | 6858.64638 |
| Potassium Chloride | 7.94225 | 463.91670 | 556.88396 |
| Lithium Chloride | 0.04665 | 2.72483 | 3.27081 |
| Ammonium Chloride | 0.17624 | 10.29402 | 12.35717 |
| Calcium Chloride | 80.10109 | 4678.80376 | 5616.42046 |
| Magnesium Chloride | 41.20369 | 2406.75932 | 2889.06499 |
| Magnesium Iodide | 0.01460 | 0.85266 | 1.02363 |
| Magnesium Bromide | 1.21730 | 71.10401 | 85.35296 |
| Strontium Sulphate | 0.01300 | 0.75916 | 0.91130 |
| Sodium Biorate | 0.03790 | 2.21372 | 2.65739 |
| Aluminum Chloride | 0.02975 | 1.73764 | 2.08594 |
| Sodium Silicate | 0.01457 | 0.85096 | 1.02147 |
| Sulphur, in suspension | 0.00712 | 0.41584 | 0.49916 |
| Ferrous Sulphide, in suspension. | 0.00621 | 0.36261 | 0.43543 |
| Ruhidium | | Trace | Trace |
| Caesium | | Trace | Trace |
| Total..... | 231.42974 | 13518.09703 | 16227.08698 |



The Park Hotel and Bath House, Looking East



Photo by Hank.

Mr. B. G. Cornell, Landscape Gardener.

The Park Hotel, Showing Their Private Grounds (Margaretha Park) in the Foreground

The Park Hotel and Bath House

The New Park Hotel and Bath House are open all the year and represent the finest additions to the great bathing interests of Mount Clemens. The hotel is one of the largest in the city, and has a national reputation. It is located upon an attractive and slightly elevated site in the prettiest portion of the town. The proprietors have recently bought the grounds formerly occupied by the Avery Hotel, which was destroyed by fire last year, and are converting them into a beautiful park, with fountains, flowers and shrubbery. They have also built a boat house and landing on the Clinton River, which runs by this park. The latter is located just across the street from the hotel, and is for the use of its patrons. The proprietors, Messrs. Kieffer and McArthur, are thoroughgoing, and their popularity has increased with their residence here. The hotel is furnished most sumptuously. Its splendid lobby and corridors and wide verandas afford delightful promenades, and many of the rooms being en suite, with private bath rooms, guests can have every comfort, convenience and luxury. The Park cuisine is famous.

The Park Bath House

Owned and operated by Messrs. Wm. Burgard and George Kieffer, under the firm name of Burgard & Kieffer, is under the same roof as the hotel, doing away alike with exposure to outside air and long and tedious passageways. It is the finest bathing institution in the country. It has

marble floors, partitions, wainscoting, and private cooling rooms, and every latest improvement.

The Park Mineral Water

We claim for the Park mineral water superior efficacy, and we do this without seeking to detract from the acknowledged merits of other waters. We submit comparative analyses of three of the most famous wells known, that of the Park being made by Prof. Samuel Duffield, of Detroit, celebrated analytical chemist.

Analysis of the Park Bath House Mineral Water

| | |
|----------------------------|-----------|
| Chloride Sodium..... | 6524.910 |
| Chloride Potassium..... | 724.990 |
| Chloride Magnesium..... | 1493.100 |
| Chloride Calcium..... | 7296.800 |
| Sulphate Calcium..... | 1050.000 |
| Carbonate Magnesium..... | |
| Iodide Magnesium..... | |
| Bromide Magnesium..... | 68.250 |
| Silica | 144.900 |
| Alumina | |
| Bicarbonate Lime..... | |
| Bicarbonate Magnesium..... | |
| Bicarbonate Calcium..... | |
| Oxide Lime..... | |
| Hydric Sulphide..... | 12.180 |
| Ferric Oxide..... | 28.700 |
| Total..... | 17343.830 |



Office of the Park Hotel Bath House



The Colonial Hotel and Bath House

The Colonial Hotel and Bath House

The Colonial is constructed and equipped on a scale of magnificence and completeness favored by the most desirable patronage. It is situated on the highest elevation in the city—thus affording a comprehensive view of the beautiful country round about.

The hotel is constructed of brick, stone, tile, cement, etc. It is, therefore, fire-proof. Further, it is adapted for business at all seasons of the year.

The founders of the Colonial Hotel and Baths during 1896 saw an opening suggestive of a spirit of progressiveness, which later was appreciated when Mount Clemens' greatness was made known by the many marvelous cures which attracted the whole world.

The hotel and bath house were built in a great field, which then assumed a much out-of-the-way appearance, but the far-sightedness of the projectors looked into the future. Soon thereafter beautiful trees, shrubs, plants, etc., assumed magnificent proportions, fronting on one of the handsomest avenues in the State, and on the main electric line to and from Detroit.

The progressive spirit did not stop with the completion of the hotel. At the time of building the bath house, which connects with hotel, wooden tubs were wholly in evidence. Agents were sent out to find a tub which would present more sanitary conditions, and solid porcelain tubs made in England were added to the equipment, proving a nucleus for others to follow in the line of progressiveness.

Among the pastimes most favored are boating, fishing, walks in the woods, wheeling, automobiling, tennis, court-golf, croquet, etc.

There are many good boarding houses close by the bath house for those who prefer less pretentious accommodations than the Colonial offers.

Bath House

The entrance to the bath house is from the hotel lobby and but ten feet from the elevator.

The Colonial Bath is fitted in the most modern and substantial manner. The walls are of marble, the tubs of solid porcelain and the floors are of tile, which construction insures an absolute sanitary condition.

The bath house is under medical supervision, which assures patrons more careful detail and care.

For detailed information a handsomely illustrated catalogue will be cheerfully mailed on request.

Analysis

| | Grains per Gal. | | Grains per Gal. |
|-------------------------|-----------------|-------------------------|-----------------|
| Bromide of Sodium.... | 10.91 | Carbonate of Magnesia.. | 1.52 |
| Iodide of Sodium..... | 17.65 | Carbonate of Calcium.. | 2.64 |
| Chloride of Sodium.... | 9052.51 | Iron Carbonate | 6.42 |
| Chloride of Potassium.. | | Silica | 50.21 |
| Bromide of Potassium.. | | Alumina | 24.72 |
| Iodide of Potassium.... | | Iron Sulphite (prec.).. | 6.26 |
| Chloride of Magnesium | 1004.32 | Iron Oxide | trace |
| Chloride of Calcium... | 3012.49 | | |
| Sulphate of Calcium... | 61.84 | Total Solids..... | 13251.49 |

Specific Gravity, 1.1200.

Sulphureted Hydrogen Gas, 37.00.

Respectfully submitted,

JOHN E. CLARK, M. D.

N. B.—Gas is represented in cubic inches, other constituents per imperial gallon.



The Wappner

The Wappner

This family hotel was erected and opened to the public in 1908, and is therefore one of our newest hotels.

It was well built and contains all the latest improvements, including hot and cold running water in each room, and bath rooms for both ladies and gentlemen on all floors. The sleeping rooms are of good size and very nicely furnished; the front and corner rooms are especially fine. The illustrations on the next page give a good idea of the style of the interior arrangement of the house. The center cut of the group shows the office and hall leading to the dining room, and the stairway leading to the upper floors. The reading and writing room is to the left of the office and the ladies' parlor on the right.

The building of the Baths of Arethusa next door, with a similar front, has given this popular family hotel a great advantage, equal that of the large hotels having bath houses under the same roof; and a convenience fully appreciated by all guests. The connection to the bath house is from the second story, covered and protected; in fact, just like passing from one room or a hall to another.

The rates range from \$14 to \$20 per week, according to the location of rooms. Special rates for winter.

For further information address—

THE WAPPNER.



The Wappner—Interior Views



The Glenwood—Harry Roy, Proprietor

The Glenwood

The Glenwood has always enjoyed the distinction of being one of the most exclusive family hotels in Mount Clemens. It is homelike and caters to the best people, and under Mr. Roy's able management has always enjoyed a most liberal patronage.

It is a three-story brick building, lighted by electricity and heated by steam. Each room has stationary wash-stands, with hot and cold running water. There are forty rooms, all with outside exposure. The floors are deadened and made entirely of hard wood, and covered with large, movable rugs. The rooms are arranged single or en suite.

The Glenwood is located next door to the Olympia Bath House and is connected with it by a steam-heated passageway, so that guests of this house are not exposed to the outside air when taking their bath. This is a great convenience, as it lessens the liability to taking cold. You merely put on your bath robe in your room and go in direct to your bath and return to cool off in your own room instead of the bath house. This is a great advantage in the winter months



The Front Porch of the Glenwood

The location of the Glenwood is a most ideal one, being on the corner of Cass and North avenues, just two short blocks from the heart of the city. The street cars pass the door for the depot and for interurban cars to Detroit and Port Huron. Cass Avenue is one of Mount Clemens' most beautiful streets. One will not find any more attractive place to stop in the city. Rates from \$2 to \$3 per day. American plan. Special rates by the week.

HARRY ROY, *Proprietor.*



The Clementine Bath House—The Clementine Hotel

The Clementine Hotel

This three-story brick hotel was completed and opened for business early in the spring of 1908. It is immediately adjoining the well-known bath house of the same name, and connected by door with the bathing department, a convenience enjoyed by very few of the smaller hotels. The hotel is located on North Walnut St., one-half block from Cass Avenue, and only one block from post-office and Court Square. The street cars pass in half block for depot and Rapid Railway for Detroit and Port Huron.



The Clementine Office



The Clementine Dining Room

Mr. Furton is also the owner of The Antlers, formerly the King House, beautifully located on Cass Avenue. The Clementine, being connected with the bath house of that name, and being steam-heated, makes a very desirable place to stop in the winter months, as it lessens the chance of catching cold while taking the baths. All of the modern conveniences are included in its construction. It is nicely furnished, and visitors requiring the baths will be pleased with the Clementine Hotel. The rates are \$9 to \$15 per week, and the house is to be open all the year.

E. M. FURTON, *Proprietor.*



Monroe Hotel and Plaza Bath House. (Both under one management.)

The Monroe Hotel and Plaza Bath House

The location of this hotel and bath house is very desirable, being on the corner opposite the Park Hotel, the Hotel Square and Park Hotel Park (on ground formerly occupied by the old Avery Hotel). The property has recently changed hands, Mr. Fred W. Miller having purchased it, and is now sole owner of hotel and bath house. He has made several changes and improvements since taking charge, and there are none of the smaller hotels in Mount Clemens that offer better accommodations than the



Monroe. It has steam heat, electric lights, gas and call bells, and all modern improvements.

The electric cars pass the door for all depots and Detroit, and the Clinton River is just one block off, where the steamer and launches make daily trips down the river to the club houses and on fishing excursions.

The Plaza Bath House, which is connected with the hotel, gives every kind of bath, and offers every convenience to its patrons.

The Hotel rates are from \$7 to \$12 per week.

MR. FRED W. MILLER, *Owner and Proprietor.*
Telephone 99.



The Melrose

This new house seems to fill the position of what may be termed a "happy medium" between a small hotel and a large boarding house, and yet it is both, and at the same time neither. It is home, not only to Mrs. Catherine L. Blayney, owner, and her family, but to all of their guests

as long as they remain beneath the roof of the Melrose. The house is thoroughly modern and steam heated. Everything about the house is homelike. It is situated at 25 South Avenue, a short distance from Cass Avenue, on which are the Clementine and Olympia Bath Houses, one block distant. Rates, \$8 to \$14 per week, according to room selected.

The Washington Sanitarium

The Washington Sanitarium, formerly known as the Martha Washington, is now devoting its energy to the care of the sick only. A corps of well-trained nurses is kept on duty night and day. Any physician of good standing is at liberty to care for his patients at this institution. Everything is so neat and clean that it is a pleasure to be a patient (we have been one). It is quiet and retired, behind the beautiful trees which shade Cass Avenue, one of the city's main residence streets. Two bath houses are located in the next block and it is only two blocks from the Court House and center of the city. Street cars pass the door from the Grand Trunk Railway depot, and the electric line to Detroit and Port Huron is only two blocks away. The Washington Sanitarium is equipped with all modern conveniences, including hot and cold water in every room. Dr. Joseph M. Croman, the proprietor, and his family, reside in the house.

Rates, including nursing and board, are from \$15 to \$24.50 per week. This does not include medicine and physician's fee.



The Washington Sanitarium



The Villa

The Villa

This hotel is situated in what is considered "head-quarters" for hotels and bath houses. On adjoining blocks are the Park and Annex hotels, and the Original, Park

and Plaza Bath Houses. The Plaza Bath House is next door and connected.

Opposite is the green and shady hotel park.

The Villa is not only happy in its surroundings, but is one of the moderate-sized and priced hotels, well suited for the larger number of visitors to this great health resort. It has always enjoyed a liberal patronage because of its comfortable accommodations and good fare. It has steam heating and electric lights, and the street cars pass the doors for all parts of the city and Detroit, also to the Grand Trunk depot.

Mr. W. L. Thompson and his wife try to make all of their guests feel at home and assist in every way to make their stay a pleasant one. They have been established in the hotel business for a great many years, and enjoy a liberal and well-deserved patronage.

W. L. THOMPSON, *Proprietor.*

The New National

The New National Hotel, one of Mount Clemens' best hotels of modern size, brick constructed, is very centrally located on South Gratiot Avenue, one-half block from the Court House, one door from the famous Medea Baths. Directly across the street are the new Baths of Arethusa. The electric cars stop at the door, the waiting room being opposite. This hotel has enjoyed a large patronage since its opening, twelve years ago, by M. Schaaf, its owner and former proprietor. Its reputation established by its owner as a most homelike and comfortable hotel, with its large rooms, all outside rooms, and homelike cuisine, has won for it a name that will always stand. Many know it as the "Deutsches Gasthaus" of Mount Clemens.

Mr. Schaaf, still owner, has retired from active interest and his son-in-law, I. A. Hartung, has for the past year conducted the Hotel as manager. Like his predecessor, he has enjoyed a large patronage. He has showed a progressive ambition and has improved the hotel with

running water and many other minor improvements for the comfort of guests. Rates are \$14 per week, American plan. Further information will gladly be given by addressing— I. A. HARTUNG, *Manager*, Mount Clemens, Mich.



The New National Hotel



Hotel Cass

Hotel Cass

The Hotel Cass is centrally located, on the corner of Court Square and Crocker Boulevard, near all the bath houses. All electric cars pass the door for Detroit and the Grand Trunk depot. The hotel is now under new management, Mr. T. Paris, a well-known hotel man of Pittsburg, Pa., having just secured a long lease on this popular hotel.

The hotel is conducted on the European plan. A buffet and rathskeller is operated by Mr. Paris in connection with the hotel and meal tickets are sold guests at reduced rates. The hotel has been refurnished and offers all the modern conveniences found in larger hotels. With its ideal location and popular prices, the Hotel Cass has always enjoyed a liberal patronage.

For further information call or write
MR. J. PARIS, *Proprietor*, Hotel Cass,
Mount Clemens, Mich.

The Clifton

This house has one of the most commanding and slightly positions in the city, facing one of the numerous flat-iron-shaped city parks, and just beyond the business part of the city, on the corner of North Gratiot Avenue and Market Street. It is on the line of the Detroit and Port Huron electric line, and cars from all trains pass the door. The front part of the building was originally erected for a gentleman's commodious dwelling, to which a large addition was built, giving in all a sufficient number of rooms for the accommodation of about seventy-five guests. The hotel is connected by an enclosed passageway with the Fountain Bath House,

and the same is well lighted, and heated by steam. The rates are \$1.50 and \$2 per day; special rates by the week. Open summer and winter. Inquiries will re-



The Clifton

ceive prompt attention and information will be cheerfully furnished.

J. E. BREHLER, *Owner and Proprietor.*



The Fountain Hotel

Fountain Hotel

Is one of the first-class institutions of the city. Of recent construction, it has the modern improvements which the traveling and invalid public nowadays find indispensable to their comfort. It is large and commodious, accommodating 150 guests. It has an inviting exterior, with spacious verandas, is finely lighted and ventilated, heated by steam, has electric lights, a passenger elevator—indeed there is nothing wanted to insure comfort and convenience. The hotel is elegantly furnished and homelike. The dining room of the Fountain has given it an enviable reputation, and in quality of service is unexcelled in the city. Beds are all forty-pound hair mattresses, and springs are of the "Ideal" type.

A valuable feature of the Fountain is its connection by covered passageway with the Fountain Bath House. By means of this convenience, communication can be had in the coldest weather without discomfort or danger.

Rates, American plan, \$9 to \$14 per week; European plan, 50 cents, 75 cents and \$1 per day. Address—

FOUNTAIN HOTEL,
J. W. PALISE, *Proprietor.*

Elkin's Hotel

The Elkin's Hotel is located in the center of the city, at No. 37 South Gratiot Ave., just opposite the Baths of Arethusa and waiting rooms of the Detroit and Port Huron Electric Railway, and two doors from the Medea Bath House.

The Elkin's is a strictly Jewish hotel, conducted on the American plan. The spacious dining room, which is noted for its cleanliness, will seat 175 guests. Music is furnished during meals. All foods are prepared in accordance with the ancient Jewish custom and religion (strictly kosher). Various kinds of amusements are furnished, including dancing twice a week, hay rides, etc. The hotel is modern, steam heat, electric lights, hot and cold running water in each room, and a private writing desk. A large parlor, smoking room and office are at the disposal of the guests.

The rates are \$14 to \$18 per week. For further information write—

SAMUEL ELKIN, *Proprietor*,
37 South Gratiot Ave.,
Mount Clemens, Mich.



The Elkin's



The Antlers Hotel

The Antlers Hotel, formerly the King House, has recently been purchased by E. M. Furton, who is still manager of the Clementine Hotel. The Antlers has been remodeled and thoroughly renovated and newly furnished throughout. It has electric lights, steam heat and hot and cold water in all guest rooms.

It is located on the highest point of land in the city. It is two blocks from two or more of

the best bath houses in the city, and about midway between the Grand Trunk Depot and the City Hall. It is passed by the electric car line connecting with all Grand Trunk trains and the interurban cars from Detroit. The hotel runs a free carriage to depot and bath houses for the accommodation of all guests.

The Antlers is strictly a family hotel, having no bar in connection.

E. M. FURTON,
Owner and Proprietor.



Crystal House

This hotel has recently been remodeled and renovated. It is nicely furnished throughout and made thoroughly agreeable and comfortable. The sleeping rooms are well fitted and well lighted. The parlors are as cozy, homelike and prettily decorated as those of most private dwellings, and the guests are made comfortable, whether invalid bathers or of the healthy transient public. Electric lights and steam heat.

Winter patients will find the house as pleasant as do those who come in the summer, and will not risk taking cold after bathing, as an underground steam-heated passage connects the house with Bath House.

The hotel is a brick building, with a capacity of 40 rooms, and is situated on the corner of Gratiot Avenue and Clinton Street, and all electric cars stop at the door. Rates, \$7 to \$10 per week for room and board.

F. L. PETTIBONE,

Owner and Proprietor.

Tel. 299-J.



Crystal House



The Capron

This house has been enlarged and improved. It has recently been connected with the Clementine Bath House, having an enclosed passageway to the bathing department. It is located at No. 19 Walnut St.; is heated by steam, and has electric lights and elevator. Rates per week, \$7 and upward; table board, \$5. Rooms reserved in advance by communicating with Mrs. E. Capron, proprietress.



The Woodbine

This is one of the best and newest of the small hotels built within the last few years. It is of brick, and pleasantly situated at 40 South Walnut, only about one-half block from the Clementine Bath House. Every room in the house is heated by steam, and has hot and cold running water. Everything is new and neat. Rates, \$9 to \$12 per week.

GEORGE WEIS, *Proprietor.*



The Tennessee

Is situated on South Walnut Street (34), one block from Court Square, and the same distance from the Clementine, Baths of Arethusa and Medea Bath House. Visitors looking for good accommodations at reasonable rates (\$8 to \$10 per week), will make no mistake in going to the Tennessee. Home cooking, and of the very best.

MRS. R. T. FARIS-AYER, *Owner and Proprietor.*



University House

This hotel is situated at 104 Clinton, just off North Gratiot Avenue. It is only one block from the Fountain Bath House, which is on the corner of the two streets named. It is heated by steam and has electric lights and other modern conveniences. Nice, clean rooms and home cooking. Rates, \$7 to \$10 per week.

OWEN REGAN, *Proprietor.*



The Chase Cottage

This private hotel-boarding house is situated on Walnut Street, just off from Cass Avenue, in the heart of the city and within two hundred feet of four of the best bath houses, the Clementine and the Olympia on Cass Avenue, the Medea on South Gratiot Avenue, and the Arethusa, which has an entrance opposite. Convenient to street cars. Electric lights, steam heat and toilet rooms on each floor. Rates, \$6 to \$8 per week. Long-distance telephone connection.

C. F. NICHOLSON, *Proprietor.*



Park Cottage

A first-class boarding house within one minute's walk of Park Bath House, The Plaza, and the Original Bath Houses. Rates reasonable. Correspondence solicited. Open all through the year.

Mr. Pingel has a carriage and will meet guests at the depot when notified of their arrival.

BERT H. PINGEL, *Proprietor,*
 Bell Phone 124-J. Home Phone 2155.
 133 N. Front St., Mount Clemens, Michigan.



The Virginia

The Virginia is delightfully and conveniently located at 231 South Gratiot Ave., and just opposite the Colonial Bath House. All electric cars pass the door for Detroit and Port Huron and all parts of the city. Visitors desiring to stop at an exclusive family hotel with all modern improvements, and where the rates are moderate, will be pleased with the Virginia.

For further particulars call or write—

MRS. J. GLESENKAMP, *Proprietor*,
231 South Gratiot Ave.



The Wiley House

The Wiley House has always enjoyed a good patronage under the able management of Mrs. Wm. Wiley, whose untiring efforts to make the guests feel at home have made The Wiley a popular place for visitors seeking a popular-priced place to stop and who like good home cooking.

It is located at 193 Cass Ave., three blocks from bath houses and the business center. Street cars pass the house for depot and all parts of the city. For further information call or write—

MRS. WM. WILEY, *Proprietor*,
193 Cass Ave.



The Bliss House

This private boarding house is situated at No. 97 Clinton St., only about one block from North Gratiot Avenue and the Fountain Bath House.

The latter will send its cab for the guests of this house and take them to and from their baths when they are unable to walk, or in bad weather.

The front of the house is nicely shaded in summer by large fine maple trees. The Bliss can accommodate fifteen to twenty guests as comfortably and as well as any for the low prices charged—\$6 to \$7 per week.

MRS. LOUISE JENSON, *Proprietor.*

Hoffmann's Bazaar

Opposite City Hall, Mount Clemens

LADIES' FURNISHING GOODS, BATTENBURG PATTERNS, STAMPED LINENS, IMPORTED YARNS, INFANTS' BONNETS AND CLOAKS.

Royal Society Floss, Utopia Floss and Yarn, Columbia Shetland Floss, Fleisher's Shetland Floss, B. and A. Embroidery Silks.

You will find the Newest Ideas in our Art Needlework Department. Stamping of all kinds done at Reasonable Prices. Orders taken for hand-made needlework. Satisfaction guaranteed in all departments.

Complete Line of Hosiery, Underwear and Corsets, at all times, Large Line of Games, Novelties, Dolls, Toys, Books and Souvenirs.

AT POPULAR PRICES

MAIL ORDERS RECEIVE PROMPT ATTENTION. SAMPLES SENT ON APPLICATION.

CARDS OF MOUNT CLEMENS PHYSICIANS

DR. JOSEPH M. CROMAN

Office at the Washington Sanitarium
MOUNT CLEMENS, MICH.

EDWARD G. FOLSOM, M. D.

Consulting Physician
MOUNT CLEMENS, MICH.
Office opposite
Fountain Bath House

SPECIALTY
RHEUMATISM

VICTOR HUGO WOLFSON, M. D.

PHYSICIAN AND SURGEON
Including the Use of X-Ray
18 Front Street, MOUNT CLEMENS, MICHIGAN.

H. G. BERRY, M. D.

A. J. WARREN, M. D.

DRS. BERRY & WARREN

Office: Cass Avenue
MOUNT CLEMENS, MICHIGAN

ALBERT F. MESSNER, M. D.

91 Cass Avenue
MOUNT CLEMENS, MICHIGAN

DR. H. F. TAYLOR

Over Central Drug Store, MOUNT CLEMENS, MICH.
OFFICE HOURS:
2 to 4 p. m. Sundays and evenings by appointment.

DR. PAUL LEUSCHNER

RESIDENT PHYSICIAN
Office, Ullrich Bank Building
Office Hours: 9 to 11 a. m. and 2 to 4 p. m.

DR. A. N. SHOTWELL

RESIDENT PHYSICIAN
MOUNT CLEMENS, MICH.
Office and Residence, Colonial Hotel

DR. S. B. MONTIQUE

RESIDENT PHYSICIAN
Special Attention to Bathers
Office, 15 Gratiot Avenue, opposite Court House
MOUNT CLEMENS, MICH.

G. H. PERSSON, M. D.

FRED TOWNSEND, M. D.

DRS. PERSSON & TOWNSEND

Office, 44 South Gratiot Ave.
MOUNT CLEMENS, MICHIGAN

J. G. WHITE, Ph. G., M. D., C. M.

Graduate Trinity University, Toronto.
Graduate Ontario College Pharmacy, Toronto.
Fellow Trinity Medical College.
Member College Physicians and Surgeons, Ontario.
Consulting Resident Physician and Surgeon to Bath Houses
Practise confined exclusively to patients
taking the Mineral Baths.
Opposite Medea Bath House, Mount Clemens, Mich.

ABNER HAYWARD, M. D.

Homeopathic Physician and Surgeon
Diseases of the Rectum a Specialty
Office: 99 Cass Ave., 1 Block West of Court House
MOUNT CLEMENS, MICH.

Sanitarium Office Hours: 8 to 11 a. m., 2 to 6 p. m.
7 to 9 p. m. TELEPHONE: Office, 323-L.

DR. J. F. O'KEEFE

Graduate Rush Medical College, Chicago, 1879; Trinity Medical College, Toronto, 1881; College Physicians and Surgeons, Ontario, 1882; New York Polyclinic, 1890; Chicago Post-Graduate, 1897 and 1899.
Office, 126 Grand Ave., MOUNT CLEMENS, MICH.

DR. WALDEMAR T. LUNGERSHAUSEN

MOUNT CLEMENS, MICH.
University of Pennsylvania; University of Michigan, Vienna, Leipsic, Munich and Heidelberg Clinics. Member American Medical Association.
Author of "The Mount Clemens Mineral Baths"

A. B. ALLEN

PHYSICIAN AND SURGEON
Chronic Diseases a Specialty. Electric Light Baths.
Electric Water Baths. Hot Air Baths. Vibration. These Baths are Recommended in Conjunction with the Mineral Baths.
OFFICE: 40 S. Gratiot, 5 doors S. of Interurban Station:
Office Hours: 8 to 12 a. m., 2 to 5 and 7 to 8 p. m.
Sundays Open till 3 p. m.

GEORGE M. SMITH, D. O.

MILTON C. SMITH, M. D.

60 South Gratiot Ave.

OSTEOPATHY

Rheumatism and Nervous Diseases a Specialty

IN connection with Osteopathic treatment the use of the Mineral Baths of Mount Clemens is a most valuable adjunct. The water is a tonic in itself, composed, as it is, of strong mineral salts, and being reconstructive in its action and upbuilding in its effect, the united use of these two agencies brings about most happy results. We advise their use in all cases where there is no contraindicated condition present.

Office and Reception Rooms:

60 SOUTH GRATIOT AVE., MOUNT CLEMENS, MICH.

OFFICE HOURS:

9.00 to 12.00 A. M.; 2.00 to 5.00 P. M.

OFFICE PHONE, 292

RESIDENCE PHONE, 618 L

Mount Clemens Mineral Water Products

Prepared Exclusively by the Mount Clemens Mineral Springs Water Company

Established 1886

Officers and Directors: John R. Murphy, Proprietor Clementine Bath House; Frank W. Preussell, Proprietor Ponacea Springs; George Chambers, President Chambers & Stewart Co.; George M. Smith, D. O.; A. A. Bennett, Cashier New Haven Savings Bank.

Mount Clemens Bitter Water

The Popular Mount Clemens Laxative

Here is Nature's great laxative and tonic, the best of all medicinal waters. It is prepared from the genuine Mount Clemens Mineral Water. It is pleasing to the taste and marvelously beneficial in its remedial action, cleansing, strengthening, invigorating.

It is equal to any other water in the world claiming similar merit. It is especially beneficial in Constipation, Dyspepsia, Sick Headache, Kidney and Liver Troubles, Nerves, Dizziness, Stomach and Bowel Troubles, Palpitation of the Heart, Acidity of the Stomach, Heart-Burn.

The following analysis is most forceful, scientific evidence of the remarkable medicinal quality of Mount Clemens Bitter Water:



Chicago, Oct. 29, 1886.

GENTLEMEN: This is to certify that I have made a careful analysis of the sample of Bitter Water you submitted to me, with the following results:

| Grains per Imperial Gallon | | Grains per Imperial Gallon | |
|----------------------------|--------|----------------------------|---------|
| Sulphate of Calcium... | 11162 | Chloride of Calcium... | 829629 |
| Chloride of Sodium... | 265020 | Carbonate of Calcium... | 15880 |
| Chloride of Potassium... | 43120 | Iron (Ses qui Oxide)... | 1890 |
| Iodide of Magnesium... | 4337 | Silica | 1764 |
| Bromide of Magnesium... | 9450 | Organic Matter | trace |
| Chloride of Magnesium... | 271553 | Total Residue... | 1453805 |

I congratulate you upon the large amount of Bromine, and especially Iodine contained in the Bitter Water, as shown in the above analysis, the quantity of the two constituents, which add so greatly to the curative value of Mineral Waters, being much greater than in any water I have ever before analyzed.

Very respectfully yours,
G. GILBERT WHEELER,
Analytical Chemist.

Mount Clemens Bitter Water is not a physic nor a harsh cathartic. It is Nature's tonic laxative. It refreshes and stimulates the natural functionings of the stomach, bowels, liver, kidneys and bladder, cleansing and strengthening.

It is a reliable remedy for Chronic Constipation. A glass every morning before breakfast will accomplish wonders in a few weeks. It restores natural conditions.

For alcoholic excess, a full glass of Bitter Water before breakfast proves a splendid and prompt restorer to normal nerve conditions.

Mount Clemens Mineral Springs Water Co.

Successors to Mount Clemens Bitter Water Co., Mount Clemens, Michigan



The Panacea Spring—F. W. Preussell, Proprietor

"PANACEA" ANALYSIS

Grains per U. S. Gallon

| | |
|--------------------------------|-------|
| Chloride of Sodium, | 1.40 |
| Carbonate Calcium, | 3.25 |
| Carbonate Magnesium, | 4.32 |
| Sulphate Calcium, | .48 |
| Chloride Potassium, | .70 |
| Sulphate Potassium, | .08 |
| Carbonate Iron, | Trace |
| Organic Matter, | None |
| Total, | 10.23 |

NATURE'S REMEDY

For Liver and Kidney Diseases, Diabetes, Insomnia, Neurasthenia, and all Nervous Disorders; Rheumatism in all its Forms

DIRECTIONS—Take one glass hot water before meals; from six glasses to one gallon per day, as recommended by your physician.

PANACEA is unexcelled as a Table Water. It is remarkably pure, as it will keep in any climate or temperature for years, which is an absolute test of water. It should be drunk freely for indigestion or kidney trouble.

WATER THAT MADE MOUNT CLEMENS FAMOUS

"Panacea" Spring

THE KING OF TABLE WATERS

The Panacea Springs are located on the "East Side," across the Clinton River. A spacious, beautiful park accommodates thousands of visitors daily.

A first-class orchestra, for season's entertainments, in attendance afternoons and evenings.

The Benefits are Undeniable

SHIPPED TO ALL PARTS OF UNITED STATES
AND CANADA

For further information and prices, write Panacea Spring, Mr. F. W. Preussell, Prop.

Corner CROCKER AVENUE and SECOND STREET

Victory Spring

Mr. Chas. Shorkey, proprietor of the celebrated Victory Spring, was one of the first to discover the flowing springs, and during the past twelve years, through his personal efforts and the efficacy of the Victory Spring water, the increase in business has been quite remarkable. Thousands visit this beautiful park and grand pavilion annually, to drink this water. The purity and medicinal qualities of the Victory Spring water can be attested by hundreds of testimonials from eminent physicians and patrons of the Spring, who have either been cured or greatly benefited. It is especially recommended for all stomach, liver and kidney troubles. The Victory Spring is located at 23 Third St. (east side), and only a short walk from the hotels. Mr. Shorkey, the proprietor, can always be found at the Spring, where his untiring efforts to make his many patrons feel at home by his pleasing manner and Irish wit have made him very popular with Mount Clemens visitors. The Victory Spring enjoys a large shipping trade, many of his customers having the water sent home after leaving Mount Clemens. Shipments of the



water are made to all parts of the U. S. and Canada. Prices, per case of one-half gallon (12 bottles), \$2.50, F. O. B.; in orders of five cases and over, \$2.00; a rebate of \$1.00 on empties returned. Address all letters to Chas. Shorkey, proprietor Victory Spring, 23 Third St. (east side), Mount Clemens, Mich.

MOUNT CLEMENS
GARAGE
FIRE-PROOF

The Very Latest Equipment
Steel Lockers
Machine Shop
Paint Shop
Compressed Air
Electric Elevator

Centrally located, only one-half block from
Court House, on South Gratiot Avenue and
extending through to Front Street.

**Mount Clemens
Garage and Motor Sales Co.**



Front Street Entrance to Garage

DEC 7 1918



Nearly Sunset (Moonlight Effect) on Lake St. Clair, near the Mouth of Clinton River

Cutter's Official Guide

*The Oldest Official Guide to Health and Pleasure Resorts
in America*

ESTABLISHED 1873, ISSUED ANNUALLY

CUTTER'S OFFICIAL GUIDE to any of the following Resorts may be obtained *free* by writing to any of the following-named Hotels, Bath Houses or Spring Companies.

CUTTER'S OFFICIAL GUIDE TO MT. CLEMENS, MICH.

(20th Edition—480,000)

| | | |
|--|---------------------|------------------------|
| The Olympia Hotel and Bath House | The Sherman Hotel | Reh's Hotel |
| The Medea Hotel and Bath House | The Wappner Hotel | Clementine Bath House |
| The Colonial Hotel and Bath House | The Glenwood Hotel | Original Bath House |
| The Park Hotel & Bath | The Arlington Hotel | Fountain Bath House |
| The Baths of Arethusa | The Elkin's Hotel | The Plaza Bath House |
| The Monroe Hotel and Plaza Bath House | The Clifton Hotel | Olympia Bath House |
| The Eastman Hotel | The Villa Hotel | Arethusa Bath House |
| | The Melrose | St. Joseph Sanitarium |
| | Clementine Hotel | Washington Sanitarium |
| | The New National | The Victory Spring Co. |
| | The Antlers Hotel | The Panacea Spring Co. |

Or to H. G. ELLIOTT, F. A. G. P. A., Grand Trunk System, Chicago, Ill.
Or to Geo. W. Vaux, G. P. A., Grand Trunk System, Montreal, Can.

CUTTER'S OFFICIAL GUIDE TO HOT SPRINGS, ARK.

(57th Edition—895,000)

| | | |
|-------------------|----------------------------|------------------------|
| Arlington Hotel | Milwaukee Hotel | The Palace Bath House |
| Eastman Hotel | The Waukesha Hotel | The Lamar Bath House |
| Majestic Hotel | The Eddy Hotel | Alhambra Bath House |
| Rockafellow Hotel | Imperial Bath House | New Hot Spgs. B. House |
| Pullman Hotel | Maurice Bath House | Backstaff Bath House |
| | The Rockafellow Bath House | |

"CUTTER'S OFFICIAL GUIDE" can be secured as an illustrated and descriptive advertising medium for any established Health and Pleasure Resort. Large editions and satisfaction guaranteed. Each regular guide will be advertised in all of our publications (notice this page), numbering 300,000 annually. Correspondence solicited.

Chas. Cutter & Son, Mount Clemens, Mich. Hot Springs, Ark.



Boating on the Clinton River

LIBRARY OF CONGRESS



0 016 090 795 2

