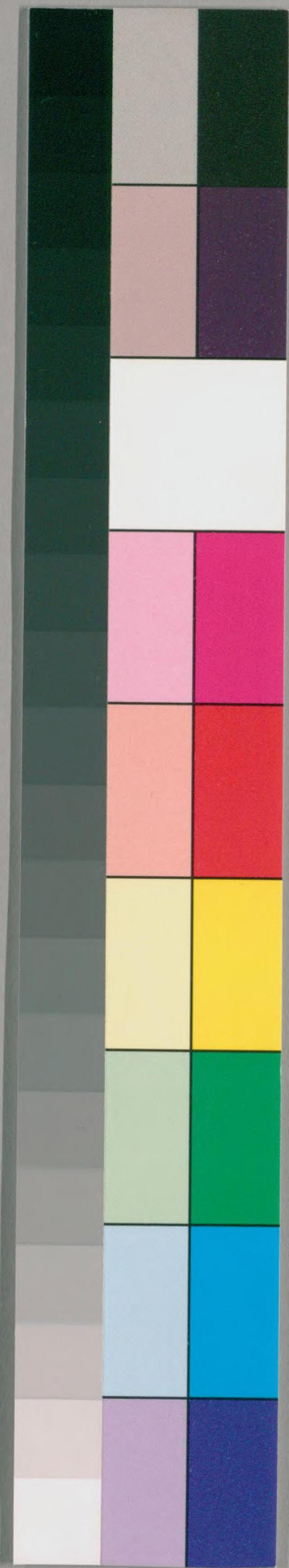




858
52



国立国会図書館 タイトル『道行集』 請求記号 858-52

ガラス使用

858-52

本館蔵書

本館蔵書 本館蔵書 本館蔵書



Handwritten Japanese text in cursive style, consisting of approximately 15 vertical columns of characters.



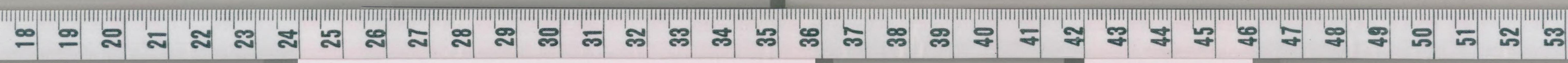
たすのうはまのうらまゝあつたてびらけり今も
足元をみぢりあつたてびらけり今も
うらまゝのうらまゝあつたてびらけり今も
うらまゝのうらまゝあつたてびらけり今も
うらまゝのうらまゝあつたてびらけり今も
うらまゝのうらまゝあつたてびらけり今も
うらまゝのうらまゝあつたてびらけり今も
うらまゝのうらまゝあつたてびらけり今も
うらまゝのうらまゝあつたてびらけり今も
うらまゝのうらまゝあつたてびらけり今も

うらまゝのうらまゝあつたてびらけり今も
うらまゝのうらまゝあつたてびらけり今も
うらまゝのうらまゝあつたてびらけり今も
うらまゝのうらまゝあつたてびらけり今も
うらまゝのうらまゝあつたてびらけり今も
うらまゝのうらまゝあつたてびらけり今も
うらまゝのうらまゝあつたてびらけり今も
うらまゝのうらまゝあつたてびらけり今も
うらまゝのうらまゝあつたてびらけり今も
うらまゝのうらまゝあつたてびらけり今も



Handwritten text in cursive script, likely a page from a manuscript. The text is dense and fills most of the page.

Handwritten text in cursive script, likely a page from a manuscript. The text is dense and fills most of the page.



Handwritten text in cursive script, likely a page from a manuscript. The text is dense and fills most of the page.

Handwritten text in cursive script, likely a page from a manuscript. The text is dense and fills most of the page.



Handwritten text in a cursive script, likely a form of Japanese calligraphy (sōsho). The text is densely packed and fills most of the page.

Handwritten text in a cursive script, likely a form of Japanese calligraphy (sōsho). The text is densely packed and fills most of the page.



Handwritten text in a cursive script, likely Japanese. The text is arranged in approximately 20 horizontal lines across the page. The characters are dark and the ink shows some bleed-through from the reverse side of the paper.





国立国会図書館 タイトル『道行集』 請求記号 858-52

ガラス使用