

Published in office of AC/AS, Intelligence AAF  
 by Combined Personnel of U. S. & British  
 Services for the use of Allied Forces.

JOINT TARGET GROUP, WASHINGTON, D. C.  
**AIR TARGET INDEX — JAPANESE WAR**  
 NUMERICAL TARGET INDEX

SHEET . . . . .ATI

DATE. . . . .20 June 1945

**OBJECTIVE AREA 90:18—SHIZUOKA (JAPAN)**

Target Number and Objective Area	Name	Location	Coordinates (approx.)	General Category	Particular Category	Comment
90:18-1176 Shizuoka (Japan)	Japan Light Metals Alumina Plant	Across harbor from Shimizu.	35°00'N 138°31'E	BPI	NFM	Largest Japanese bauxite alumina plant. May now be shut down for lack of bauxite.
90:18-1177 Shizuoka (Japan)	Japan Light Metals Aluminum Plant	Kambara, W bank of mouth of Fuji River.	35°07'N 138°37'E	BPI	NFM	Largest Japanese aluminum plant.
90:18-1181 Shizuoka (Japan)	Numazu RR Yards	Numazu.	35°06'N 138°52'E	BSU	RRT	Marshalling yards at junction of old and new Tokaido Lines from Koju. Change from electric to steam operation here. Probable concentration of electric and steam locomotives.
90:18-1604 Shizuoka (Japan)	Inako Hydro Plant	Fuji River 6 miles W of Omuja, directly E of RR bridge at mouth of branch of river.	35°14'N 138°32'E	BSU	EP	43,000 kw (20,000 kw dry season) Double-cycle, able to feed into Tokyo or Central Honshu networks but normally a supplementary power source for Japan Light Metals Aluminum Plant (90:18-1177).
90:18-1605 Shizuoka (Japan)	Kambara Hydro Plant	NW corner of Japan Light Metals Aluminum Plant (90:18-1177) mouth of Fuji River on Sagami Bay near Kambara.	35°07'N 138°38'E	BSU	EP	54,000 kw. Supplies the aluminum plant. (90:18-1177).
90:18-1609 Shizuoka (Japan)	Oigawa Hydro Plant	N bank of Oi River River across from Aobe RR Station.	35°05'N 138°07'E	BSU	EP	62,000 kw (15,000 kw dry season). Double-frequency plant able to supply either Tokyo or Central Honshu networks.
90:18-2011 Shizuoka (Japan)	Shizuoka Aircraft Engine Works	1 1/3 miles E of Shizuoka station, between a mountain range and the city.	34°59'N 138°25'E	EPI	AC	New engine plant with ultimate potential of 500-600 engines per month. Was coming into large-scale production in 1945.
90:18-2023 Shizuoka (Japan)	Sumitomo Light Metals Co., Shimizu Plant	Directly SE of Shimizu.	34°59'N 138°29'E	EPI	AC	Originally called Shimizu Nippon Gakki. Probably produces plywood and alloy aircraft parts.
90:18-2024 Shizuoka (Japan)	Sumitomo Light Metals Co., Shizuoka Plant	In Shizuoka, directly SW of Shizuoka Aircraft Engine Works (90:18-2011).	34°58'N 138°25'E	EPI	AC	Probably producing aircraft parts.
90:18-2116 Shizuoka (Japan)	Kokusan Electric Co., Mishima Plant	About 1 1/2 miles NE of Namazu RR Yards (90:18-1181).	35°07'N 138°53'E	EPI	LM AC	Important producer of light electrical equipment, particularly magnetos and starting equipment for A/C.
90:18-2150 Shizuoka (Japan)	Shimizu Oil Refinery	On N waterfront of Shimizu, N of vegetable oil refinery.	35°01'N 138°30'E	EPI MS	P P	Estimated 167,000 barrels storage capacity.
90:18-2179 Shizuoka (Japan)	Abe-gawa RR Bridge, (Tokaido Line)	Shizuoka.	34°58'N 138°22'E	BSU	RRT	On bottleneck section of Tokaido Line.
90:18-3581 Shizuoka (Japan)	Shimizu—Port Area	In Suruga Bay in S Central Honshu.	35°01'N 138°30'E	BSU	S	Annual capacity about 1,089,000 metric tons. Aluminum and boat building port.

BEI—Basic Equipment Industries; BPI—Basic Processing Industries; BSU—Basic Services & Utilities; EPI—End Product Industries; MIC—Mixed Industrial Concentrations; MS—Military Stores.

A—Armament; AC—Aircraft; C—Chemicals; CIS—Coke, Iron & Steel; EP—Electric Power; LM—Light Manufacturing; MMT—Machinery & Machine Tools; M—Munitions; NFM—Non-ferrous Metals; P—Petroleum; RRT—Road & Rail Transportation; S—Shipping; TE—Transportation Equipment; UIC—Urban Industrial Concentrations.

JOINT TARGET GROUP, WASHINGTON, D. C.  
**URBAN INFORMATION SHEET**

SHEET..... Shimizu-TI  
 DATE..... 2 March 1945  
 PAGE..... 1

**SHIMIZU  
 JAPAN**

**(PRE-ATTACK ASSESSMENT)**

OBJ. FOLDER  
                   **90:16, 18, 21**  
 OBJ. AREA.....**90:18**  
 CATEGORY....**Mixed Ind.**  
                   **Conc.—URBAN AREA**  
 LAT.....**35° 00' N**  
 LONG.....**138° 31' E**

**SIGNIFICANCE**

Shimizu is the only deep-water harbor between Tokyo and Nagoya. With a pre-war population of 68,000 and ranking seventh among Japanese ports in value of overseas trade, Shimizu also handled, by way of the double-track Tokaido RR, a considerable volume of coal and other coastwise traffic for Hamamatsu, Shizuoka, and Numazu—all now war industry centers.

Shimizu is the site of a sizeable steam power station and Japan's largest alumina plant, which uses imported bauxite and primarily supplies Target 90:18-1177\* (Japan Light Metals, Aluminum Plant) at Kambara, 10 miles NE. Aircraft components plants, boat-building and repair yards, minor oil refining facilities, lumber mills and food-packing plants constitute the other industry. Reconnaissance has confirmed reports that fleet units use Shimizu at intervals.

**DESCRIPTION AND LAYOUT**

Shimizu is located at the head of Suruga Bay, midway between Tokyo and Nagoya on the main railroad and highway connecting these centers. To the E, Miho Point (site of the alumina plant, power station and boatyards) protects the harbor and extensive anchorage area, which can accommodate vessels drawing 30 feet. The town proper extends along the Tomoye River, the Tokaido RR and the wharves on the western edge of the harbor. In addition to the rail sidings and handling facilities near the station, a spur leads around the shallow southern end of the bay to industries and military storage areas on Miho Point. Dockside warehouses are also served by rail. An electric line and improved highway as well as the Tokaido RR lead to Shizuoka city 8 miles SW.

**TARGETS AND OTHER SIGNIFICANT  
 INSTALLATIONS  
 (SEE SHIMIZU/PA)**

Reference No.	Name	Comment
1	Revetted storage area.	
2	Barracks.	
3	Boat-building yard.	
4	Small seaplane hangar and ramp.	
5	Target 90:18-1176*—Japan Light Metals Alumina Plant.	No evidence of conversion to processing of non-bauxite ores.
6	Shimizu Steam Power Plant.	Reported 30,000 KW capacity.
7	Kamazashi boat-building and repair yard.	Small drydock.
8	Boat-building yard.	
9	Ito Seisakusho.	Iron works for nearby boat-building and repair yards.
10	Small shipyard.	4 slipways, 270 to 400 feet long.
11	Military camp.	
12	Boat-building yard.	7 slipways up to 250 feet long.
13	Log-pond, sawmill and lumber storage.	
14	Target 90:18-2023 — Sumitomo Light Metals, Shimizu Plant.	New plant reported producing plywood and alloy aircraft components.
15	Barracks.	
16	Unidentified.	Reported related to No. 14.
17	Canneries and other small plants.	
18	Warehouse and dock area.	Docks N of Tomoye River and at Target 90:18-1176 have electric cranes and can accommodate vessels drawing 30 feet. Wharfage S of River reported dredged to 23 feet. Boat basin at N end of area has bulk coal-transferring facilities. Extensive lighterage facilities available.
19	Honan Vegetable Oil Plant.	Sizeable output of edible oils and substitute lubricants.
20	Toa Refinery.	Small oil refinery; limited storage.
21	Tokai Boatyard.	Builds and repairs steel and wooden boats.
22	Small machine shops and wood-working plants.	
23	Shimizu plant of Fuji Engineering Co.	Freight sheds and transshipping facilities.
24	Shimizu RR Station and Yards.	Supplies local vegetable and fish canneries.
25	Oriental Can Co., Shimizu Plant.	
26	Unidentified light industries.	
27	Koito Engineering Works.	Produces starters and other light electrical equipment for Naka jima A/C Co.
28	Reported infantry workshops.	

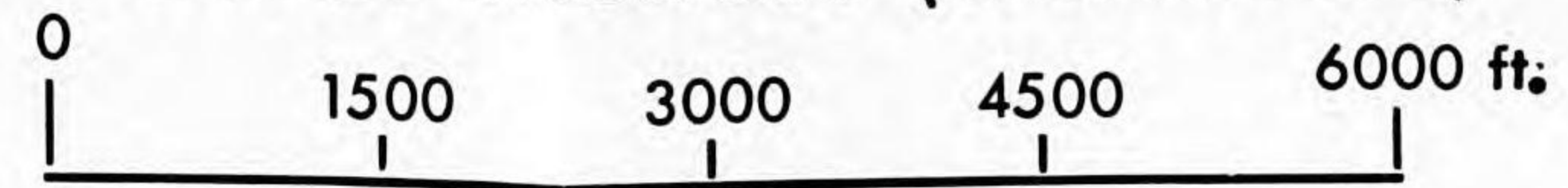
\*Installations for which Target Information Sheets have been completed or are scheduled.  
 Note.—Schools, public buildings, and minor military storage or barracks areas have not been annotated.

REPRINT

# SHIMIZU — JAPAN

**JOINT  
TARGET GROUP**  
WASHINGTON, D. C.  
**URBAN AREA MOSAIC**

**Clear Mosaic (Uncontrolled)**



1:25000 Approx.

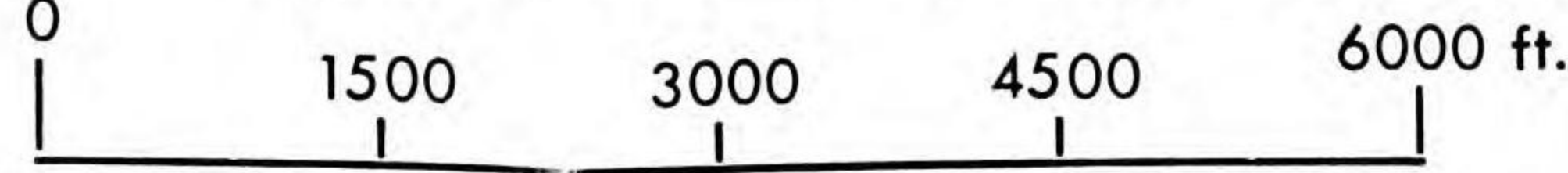
SHEET ..... SHIMIZU-PM  
ISSUED ..... 26 April 1945  
PHOTOGRAPHED . 5 November 1944



REPRINT

# SHIMIZU — JAPAN

## Annotated Mosaic (Uncontrolled)



1:25000 Approx.

SHEET . . . . . SHIMIZU-PA

ISSUED . . . . . 26 April 1945

PHOTOGRAPHED 5 November 1944

**JOINT  
TARGET GROUP**  
WASHINGTON, D. C.  
**URBAN AREA MOSAIC**



### LEGEND

Reference No.	Name	Comment
1	Revetted storage area.	
2	Barracks.	
3	Boat-building yard.	
4	Small seaplane hangar and ramp.	
5	Target 90.18-1176—Japan Light Metals Alumina Plant.	No evidence of conversion to production of non-bauxite area.
6	Shimizu Steam Power Plant.	Reported 30,000 KW Capacity.
7	Kamazashi boat-building and repair yard.	Small drydock.
8	Boat-building yard.	
9	Ito Seisakusho.	Iron works for nearby boat-building yard.
10	Small shipyard.	4 slipways 270 to 400 feet long.
11	Military camp.	
12	Boat-building yard.	7 slipways up to 150 feet long.
13	Log-pond, sawmill and lumber storage.	
14	Target 90.18-2023—Sumitomo Light Metals, Shimizu Plant.	New plant reported producing plywood and alloy aircraft components.
15	Barracks.	
16	Unidentified.	Reported related to No. 1.
17	Canneries and other small plants.	
18	Warehouse and dock area.	Docks on Tomoye River and at Target 90.18-1176 have mooring spaces and can accommodate vessels drawing 30 feet. S of River pier is divided into 2 lanes. Boat basin at N end of pier has built-up transferring facilities. External lighterage facilities available.
19	Honan Vegetable Oil Plant.	Sizable output of kerosene and lubricants.
20	Taa Refinery.	Small oil refinery (limited storage).
21	Takai Boatyard.	Builds and repairs floats and wooden boats.
22	Small machine shops and woodworking plants.	
23	Shimizu plant of Fuji Engineering Co.	
24	Shimizu RR Station and Yards.	Freight sheds and transportation facilities.
25	Oriental Can Co., Shimizu Plant.	Supplies local vegetable and fish canneries.
26	Unidentified light industries.	
27	Kaito Engineering Works.	Produces starters and other light electrical equipment for Nakajima A. Co.
28	Reported infantry workshops.	

\*Installations for which Target Information Sheets have been completed or are scheduled.  
NOTE—Schools, public buildings, and minor military storage or barracks areas have not been annotated.



JOINT TARGET GROUP, WASHINGTON, D. C. <b>URBAN INFORMATION SHEET</b>	SHEET . . . . . <b>Shizuoka-TI</b> DATE . . . . . <b>5 March 1945</b> PAGE . . . . . <b>1</b>
<b>SHIZUOKA CITY</b> <b>JAPAN</b> (Pre-Attack Assessment)	OBJ. FOLDER <b>90:16, 18, 21</b> OBJ. AREA . . . . . <b>90:18</b> CATEGORY . . . . . <b>Mixed Ind.</b> <b>Conc.—URBAN AREA</b>
	LAT. . . . . <b>35° 57' N</b> LONG. . . . . <b>138° 24' E</b>

**SIGNIFICANCE**

Shizuoka City, prefectural capital and tea-packing center, had a pre-war population of 212,000. An old-time infantry training center, its strategic importance is focused on two new war plants located directly east of the city—a Mitsubishi aircraft engine works and a related Sumitomo components plant. One of the city's textile mills along with small iron works, etc., are reported now devoted to war production.

**DESCRIPTION AND LAYOUT**

Shizuoka is located midway between Tokyo and Nagoya on the narrow coastal plain west of Suruga Bay. The broad Abe River which borders Shizuoka on the west is not suitable for navigation, but the city is served by the double-track Tokaido railroad and a trunk highway, both of which lead through the deep-water port of Shimizu, located 8 miles northeast. In addition to the barracks in the former Castle grounds, new military installations have been constructed north-east of the city.

The textile mills and new aircraft plants are located outside the city proper to the east, but considerable warehousing and light industry is intermixed with residences in the west section of the built-up area and adjacent to the railroad. A sizeable part of the central residential/commercial section was burned out in 1940. As rebuilt, this area—extending from the railroad to the Castle grounds—is considerably less congested than adjoining sections of the city.

**TARGETS AND OTHER SIGNIFICANT INSTALLATIONS**

(See Shizuoka/PA)

Reference No.	Name	Comment
1	Unidentified industry.	Annotated as No. 28 on Shimizu mosaic.
2	Infantry workshops and loose stores.	Reported serving Shizuoka infantry barracks.
3	New railroad spur.	Possibly leading underground.
4	Barracks.	
5	Sanko textile mill.	No evidence of conversion.
6	Marukuni Iron Works.	Reported making castings for Nakajima Aircraft Co.
7	Transformer station.	
8	New gas works.	Serving target 90:18-2011.
9	Toyo textile mill.	Report of conversion by Army to unidentified war production.
10	New construction.	Adjoining former Toyo textile mill.
11	Target 90:18-2011*—Shizuoka Aircraft Engine Works.	New Mitsubishi plant. Estimated ultimate production rate of 500/600 engines per month.
12	Target 90:18-2024—Sumitomo Light Metals, Shizuoka Plant.	Unidentified aircraft components.
13	Ogura ammunition storage.	
14	Gas works.	
15	Shizuoka railroad yards and shops.	
16	Shizuoka Castle Infantry Barracks.	
17	Drill field.	
18	Light industry district.	Predominantly tea and vegetable packing plants.
19	Waterworks.	
20	Probable textile mill.	
21	New residential/commercial construction.	Rebuilt after destruction by fire in 1940.

\*Installations for which Target Information Sheets have been completed or are scheduled.

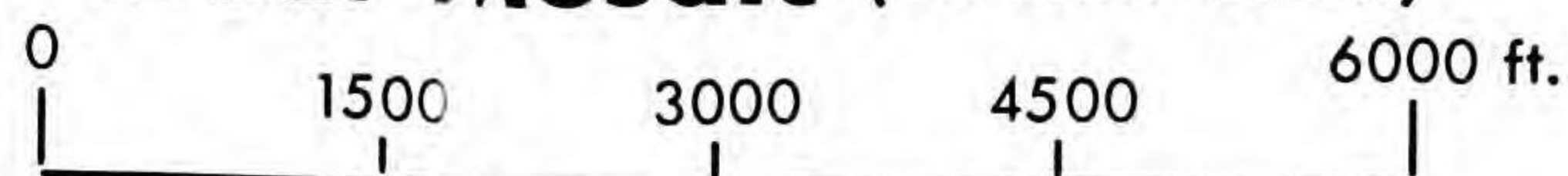
Note.—Schools, public buildings, and minor military storage or barracks areas have not been annotated.

REPRINT

JOINT  
TARGET GROUP  
WASHINGTON, D. C.  
URBAN AREA MOSAIC

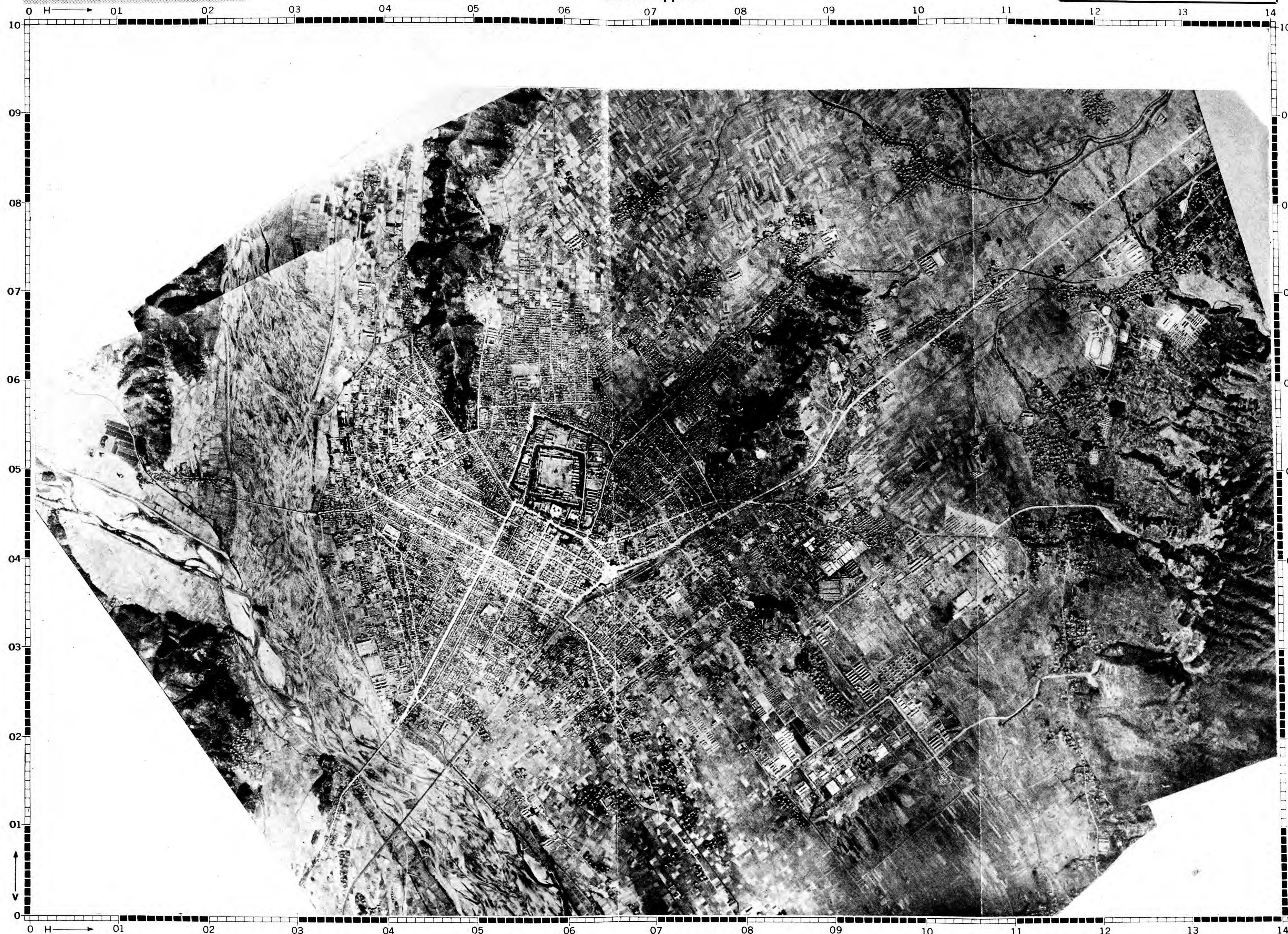
# SHIZUOKA — JAPAN

Clear Mosaic (Uncontrolled)



1:25000 Approx.

SHEET ..... SHIZUOKA-PM  
ISSUED..... 26 April 1945  
PHOTOGRAPHED 5 November 1944

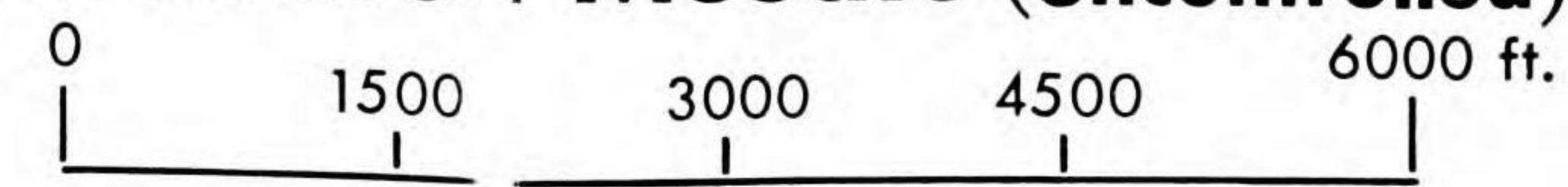


REPRINT

JOINT TARGET GROUP  
WASHINGTON, D. C.  
URBAN AREA MOSAIC

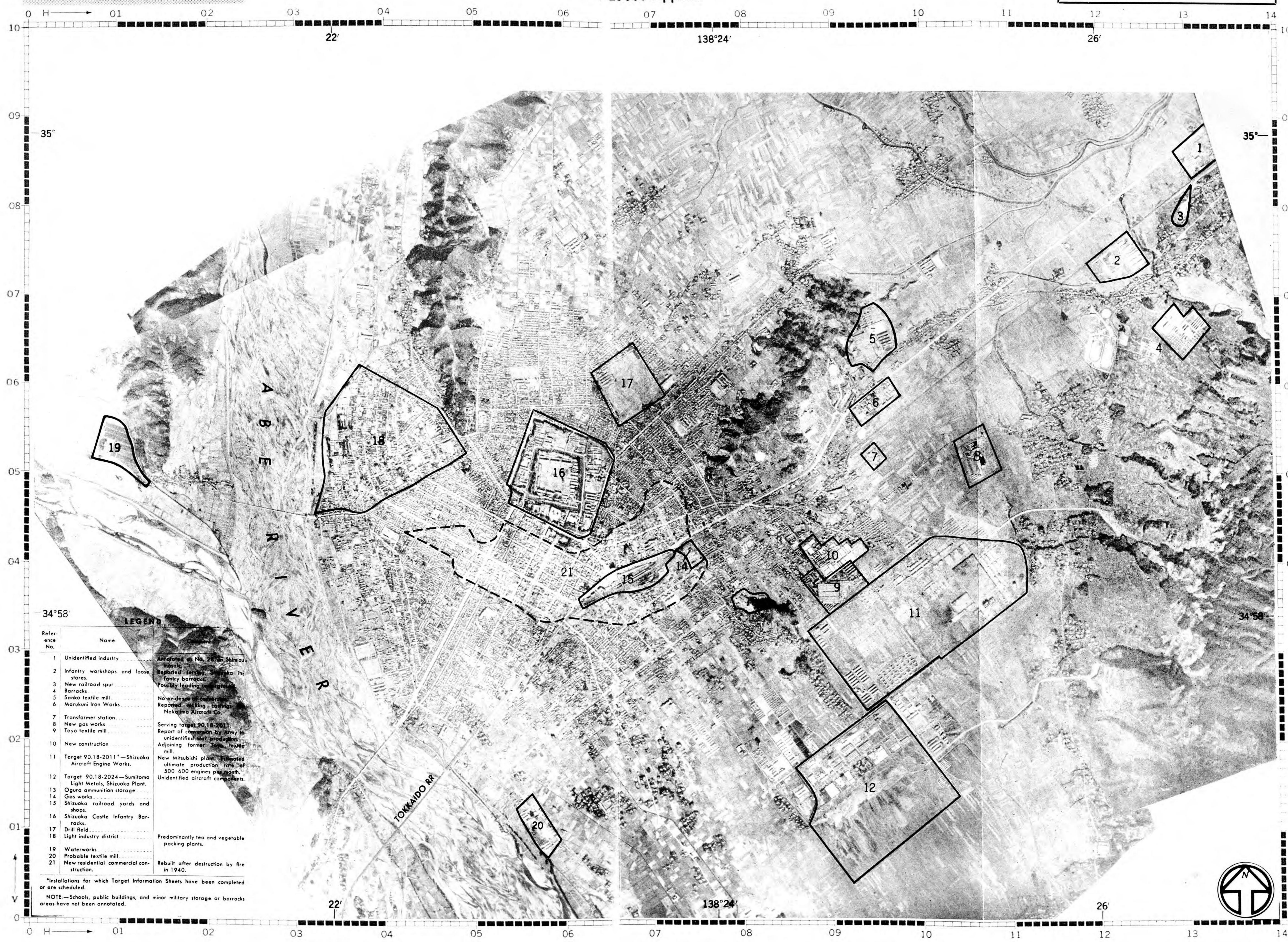
SHIZUOKA — JAPAN

Annotate | Mosaic (Uncontrolled)



1 25000 Approx.

SHEET . . . . . SHIZUOKA-PA  
ISSUED . . . . . 26 April 1945  
PHOTOGRAPHED . 5 November 1944



LEGEND

Reference No.	Name	Description
1	Unidentified industry	Undated in No. 29 in Shimizu mosaic
2	Infantry workshops and loose stores	Reported serving Shizuoka infantry barracks
3	New railroad spur	Possibly leading to industrial area
4	Barracks	
5	Sanko textile mill	No evidence of construction
6	Marukuni Iron Works	Reported making castings
7	Transformer station	
8	New gas works	Serving target 90.18-2011
9	Toyo textile mill	Report of completion by Army to unidentified unit producing
10	New construction	Adjoining former Toyo textile mill
11	Target 90.18-2011*—Shizuoka Aircraft Engine Works	New Mitsubishi plant. Estimated ultimate production rate of 500-600 engines per month. Unidentified aircraft components
12	Target 90.18-2024—Sumitomo Light Metals, Shizuoka Plant	
13	Gas works	
14	Shizuoka railroad yards and shops	
15	Shizuoka Castle Infantry Barracks	
16	Drill field	
17	Light industry district	Predominantly tea and vegetable packing plants
18	Waterworks	
19	Probable textile mill	
20	New residential commercial construction	Rebuilt after destruction by fire in 1940
21		

\*Installations for which Target Information Sheets have been completed or are scheduled.  
NOTE—Schools, public buildings, and minor military storage or barracks areas have not been annotated.

REPRINT



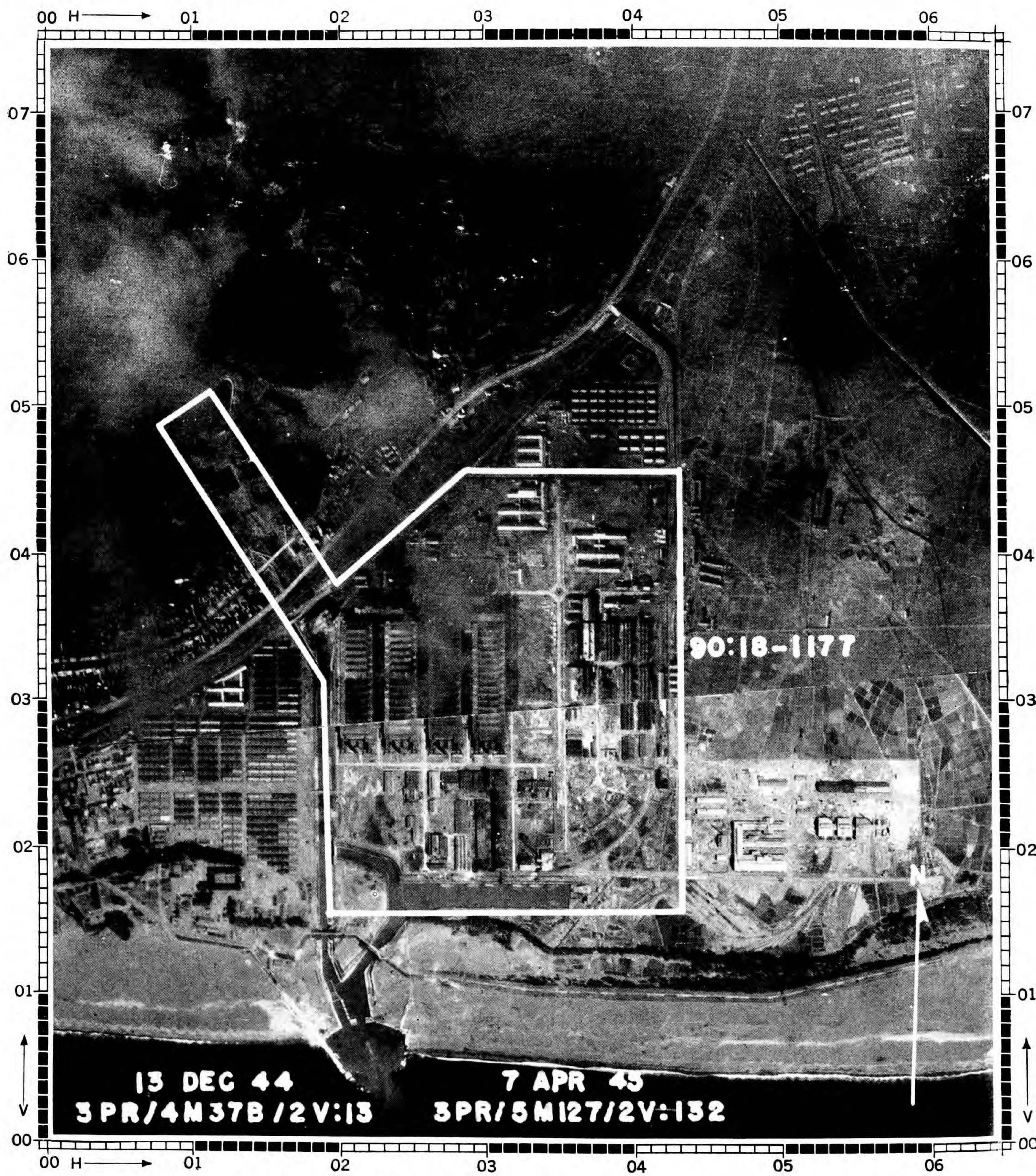
JOINT TARGET GROUP, WASHINGTON, D. C.  
TARGET LOCATION SHEET

JAPAN LIGHT METALS, ALUMINUM PLANT  
KAMBARA JAPAN

SHEET ..... 90:18-1177-TL  
DATE ..... 11 June 1945  
TARGET ..... 90:18-1177  
CATEGORY ..... Bsc. Proc. Ind.-  
NON-FERROUS METALS  
COORDINATES ..... 35°07'N 138°37'E  
ALTITUDE ..... 16 feet

SIGNIFICANCE:

Largest aluminum reduction plant under Japanese control. Estimated annual capacity 40,000 metric tons. Believed producing approximately at full capacity. Plant includes some fabrication or reprocessing of aluminum and aluminum alloy scrap.



LARGE SCALE ILLUSTRATION—SCALE APPROX.: 1:9,650



SMALL SCALE ILLUSTRATION—SCALE APPROX.: (NO SCALE)

**JOINT TARGET GROUP, WASHINGTON, D. C.  
WEAPON RECOMMENDATIONS SHEET**

Sheet **90:18-2011—WR1**  
 Date **26 March 1945**  
 Page **1**  
 Target **90:18-2011**  
 Obj. Area **90:18**  
 Obj. Folder **New Target**  
 Category: **End Prdt. Ind.—  
AIRCRAFT**  
 Lat. **34°59'N**  
 Long. **138°25'E**  
 Alt. **45 feet**

**SHIZUOKA AIRCRAFT ENGINE  
WORKS**

**SHIZUOKA . . . . . JAPAN**

**High and Medium Altitude Attack**

**AIMING POINT**

For maximum damage to primary objectives the aiming point should be building 16. (Illustrations No. 90.18-2011 P3, P5.)

**LOADING TABLE FOR INITIAL  
ATTACK**

*Loading table for preferred combination of bombs<sup>2</sup>*

[This table is prepared for an initial attack on this target. For its application to later attacks see JTG Memorandum No. 3/1]

**WEAPONS AND FUZING**

	HE	Fuze	IB
Preferred.....	1,000-lb. GP...	.01 N/ND T..	AN-M50 4-lb. (in aimable clusters).
Alternative...	500-lb. GP....	.01 N/ND T..	AN-M69 6-lb. (in aimable clusters).
	2,000-lb. GP...	.01 N/ND T..	AN-M47 70-lb. AN-M76 500-lb.

Not recommended: Smaller GP Bombs.  
SAP or AP Bombs.  
Depth Bombs.

- (a) Use 0.1 N fuzes, if 0.01 N fuzes are not available.
- (b) The 500-lb. GP and 2,000-lb. GP are respectively 95 and 90 percent as effective as the 1,000-lb. GP bomb.

Tons (actual) dispatched	Percent of bombs dispatched falling within 1,000 feet of aiming point											
	10 percent			15 percent			20 percent			30 percent		
	Tons		F 1 percent	Tons		F 1 percent	Tons		F 1 percent	Tons		F 1 percent
	HE	IB		HE	IB		HE	IB		HE	IB	
50.....				25	25	15	20	30	20	10	40	30
100.....	35	65	20	25	75	30	20	80	35	10	90	40
200.....	35	165	35	25	175	45	20	180	45	50	150	50
400.....	35	365	45	100	300	50	150	250	55	250	150	60
800.....	350	450	55	500	300	65						
1,000.....	550	450	60									

<sup>1</sup> Expected percent of serious damage to the whole target.  
<sup>2</sup> If the alternative bombs are used, the distribution of the load between HE and IB should be the same. The expected percent of damage will, of course, be lower.

REPRINT

**JOINT TARGET GROUP, WASHINGTON, D. C.  
WEAPON RECOMMENDATIONS SHEET**

Sheet **90:18-2011-WR2**  
Date **28 March 1945**  
Page **1**

**SHIZUOKA AIRCRAFT ENGINE  
WORKS**

Target **90:18-2011**  
Obj. Area **90:18**  
Obj. Folder **New Target**  
Category: **End Prdt. Ind.—  
AIRCRAFT**

**SHIZUOKA . . . . . JAPAN**

Lat. **34°59'N**  
Long. **138°25'E**  
Alt. **45 feet**

**ALL PREVIOUS SHEETS CANCELLED**

**Low Level Attack**

**(See also 90.18-2011 TI and associated target illustrations)**

**TYPE OF ATTACK**

This sheet applies primarily to an attack by carrier based aircraft, fighter bombers, or other similar aircraft which carry out dive, glide, low level, or minimum altitude attacks.

weapons to be used against the individual buildings are given in the table below, with the exception that for minimum altitude attacks a 4-5 second delay is required for safety to the aircraft. The use of SAP, AP, smaller GP, or depth bombs is not recommended for this target.

**BUILDINGS CONSIDERED**

Data are given below for an attack on primary and/or secondary buildings only. (See Ill. No. 90.18-2011 P3, P5.) Other buildings are of insufficient importance to merit specific attack.

**NUMBER OF HITS**

*Number of hits required to achieve 50 percent serious damage to individual important buildings<sup>1</sup>*

**WEAPONS AND FUZING**

A pure HE attack (no incendiaries) may be launched against the buildings specified in the table below. The choice of a particular HE weapon for attack on a given building can be made by considering both the number of hits on that building required for the various bombs (see the table below) and the stowage capabilities of the aircraft to be used. The proper fuzings for the HE

Buildings in order of importance to production (Ill. No. 90.18-2011 P3, P5)	Number of hits			Fuzing <sup>1</sup>
	500-lb. GP	1,000-lb. GP	2,000-lb. GP	
16	112	57	31	0.01 N/ND T
42	19	10	5	.01 N/ND T

<sup>1</sup> To obtain the number of hits required to achieve 30 percent serious damage to individual important buildings, multiply the appropriate entry in the preceding table by 0.5; for 70 percent serious damage, multiply by 1.7.  
<sup>2</sup> Use 0.1 N fuzes, if 0.01 N fuzes are not available.

**REPRINT**

TARGET NO. 90:18-2011

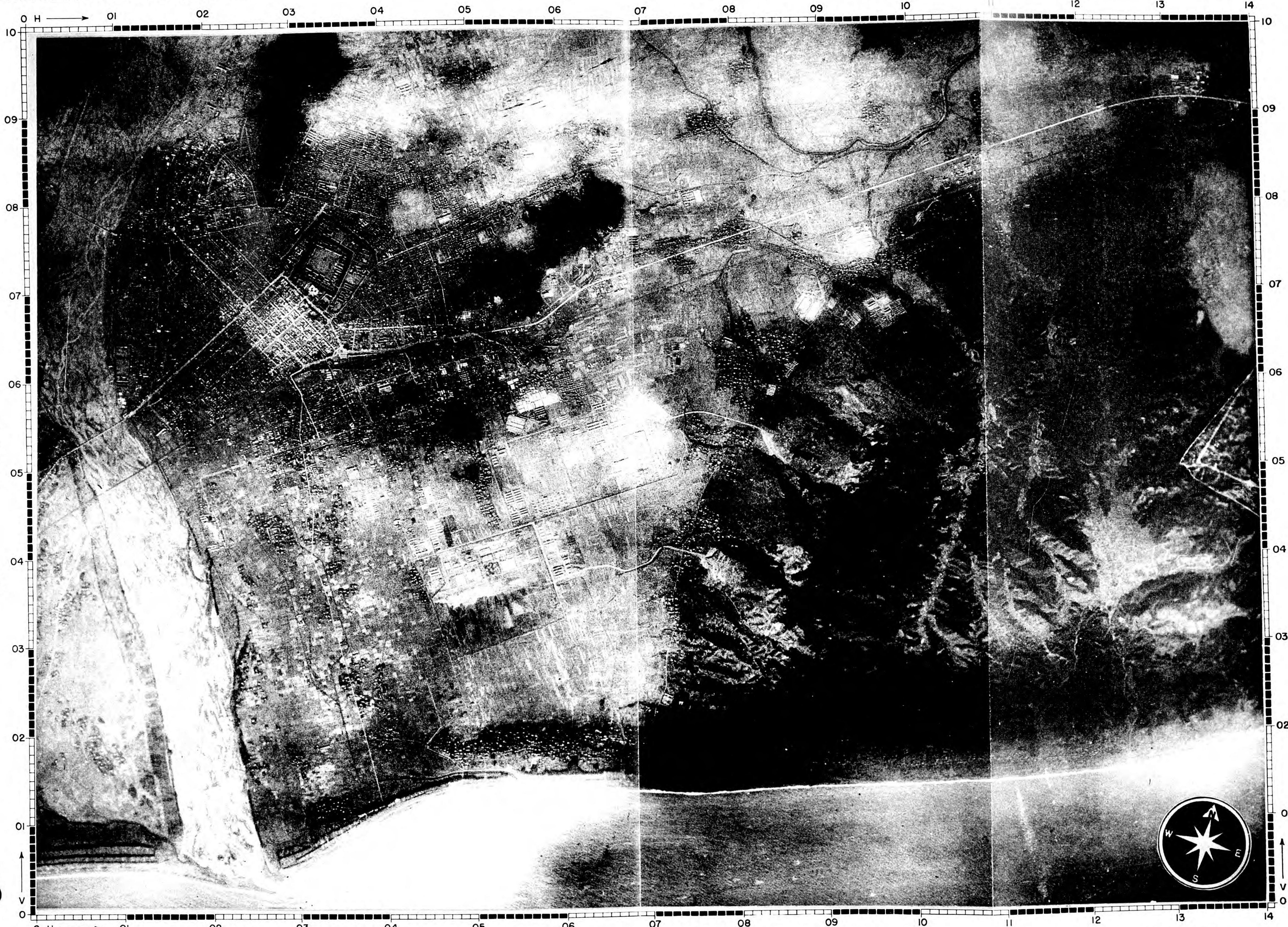
COORDINATES 34° 59' N 138° 25' E

PHOTOGRAPHED 5 NOVEMBER 1944

0 2000 4000 6000 FEET  
0 1/2 1 MILE 1:32 000 APPROX.

RESTRICTED

REPRINT



RESTRICTED

FILE NO. 553,011.52

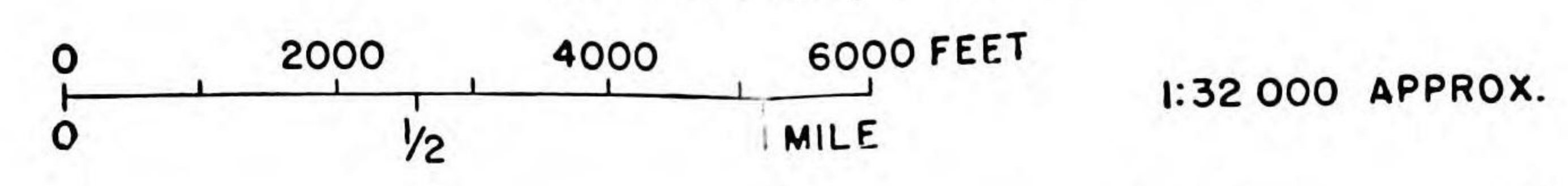
TARGET NO. 90:18-2011

SHIZUOKA AIRCRAFT ENGINE PLANT

ISSUED 30 JANUARY 1945

COORDINATES 34° 59' N 138° 25' E

SHIZUOKA, JAPAN



RESTRICTED

PHOTOGRAPHED 5 NOVEMBER 1944

REPRINT



RESTRICTED

FILE No. 553,011.54

TARGET NO. 90:18-2011

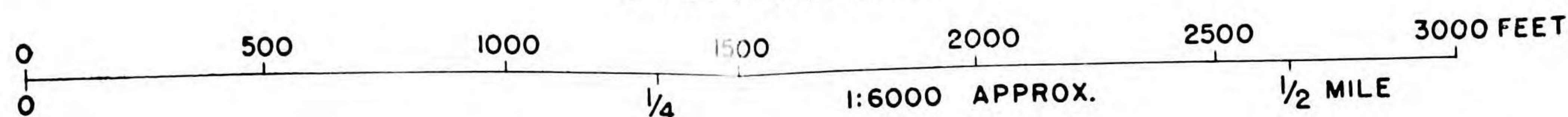
JOINT TARGET GROUP - WASHINGTON, D. C.  
SHIZUOKA AIRCRAFT ENGINE WORKS  
SHIZUOKA, JAPAN

ILLUSTRATION NO. 90:18-2011 P3

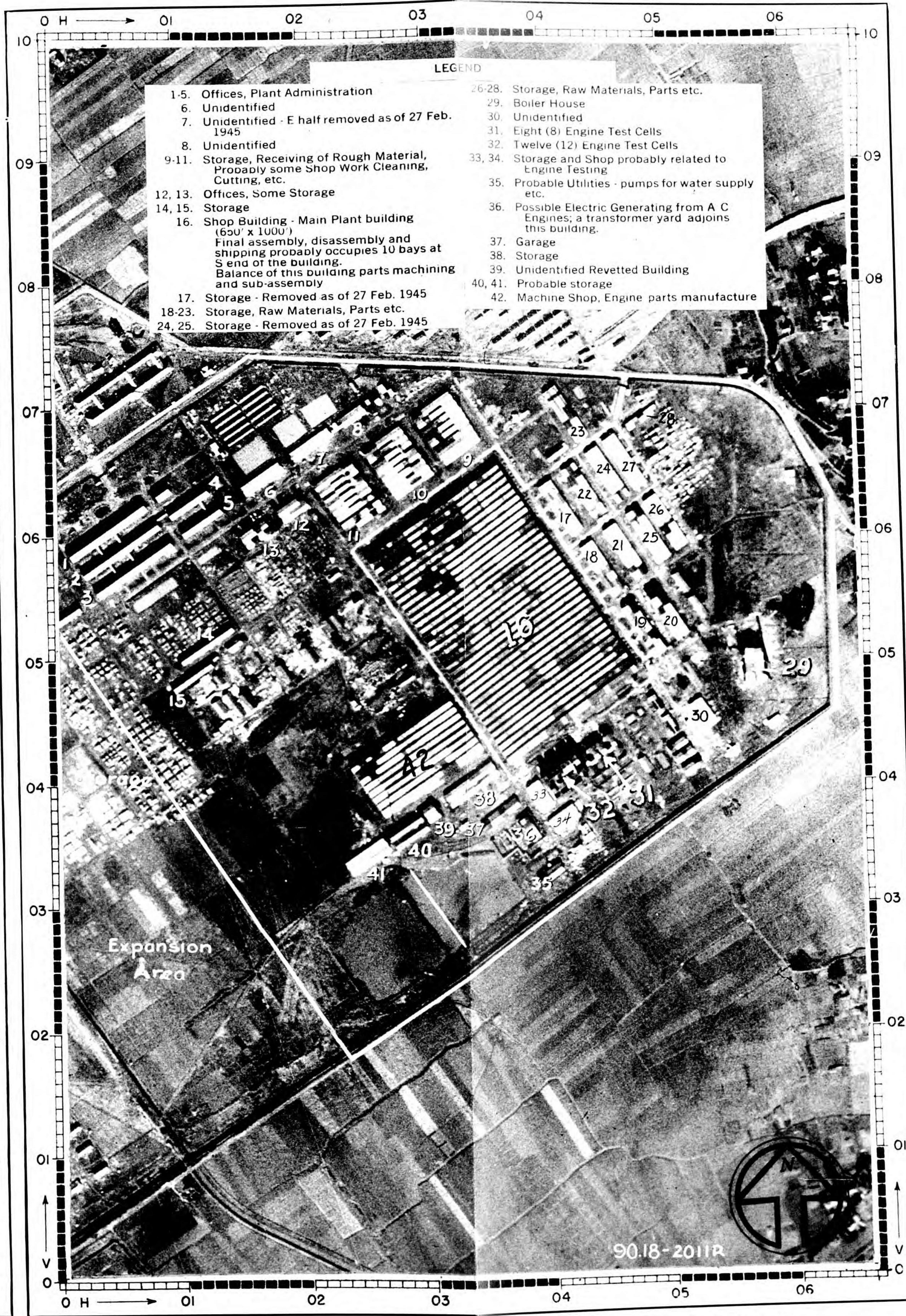
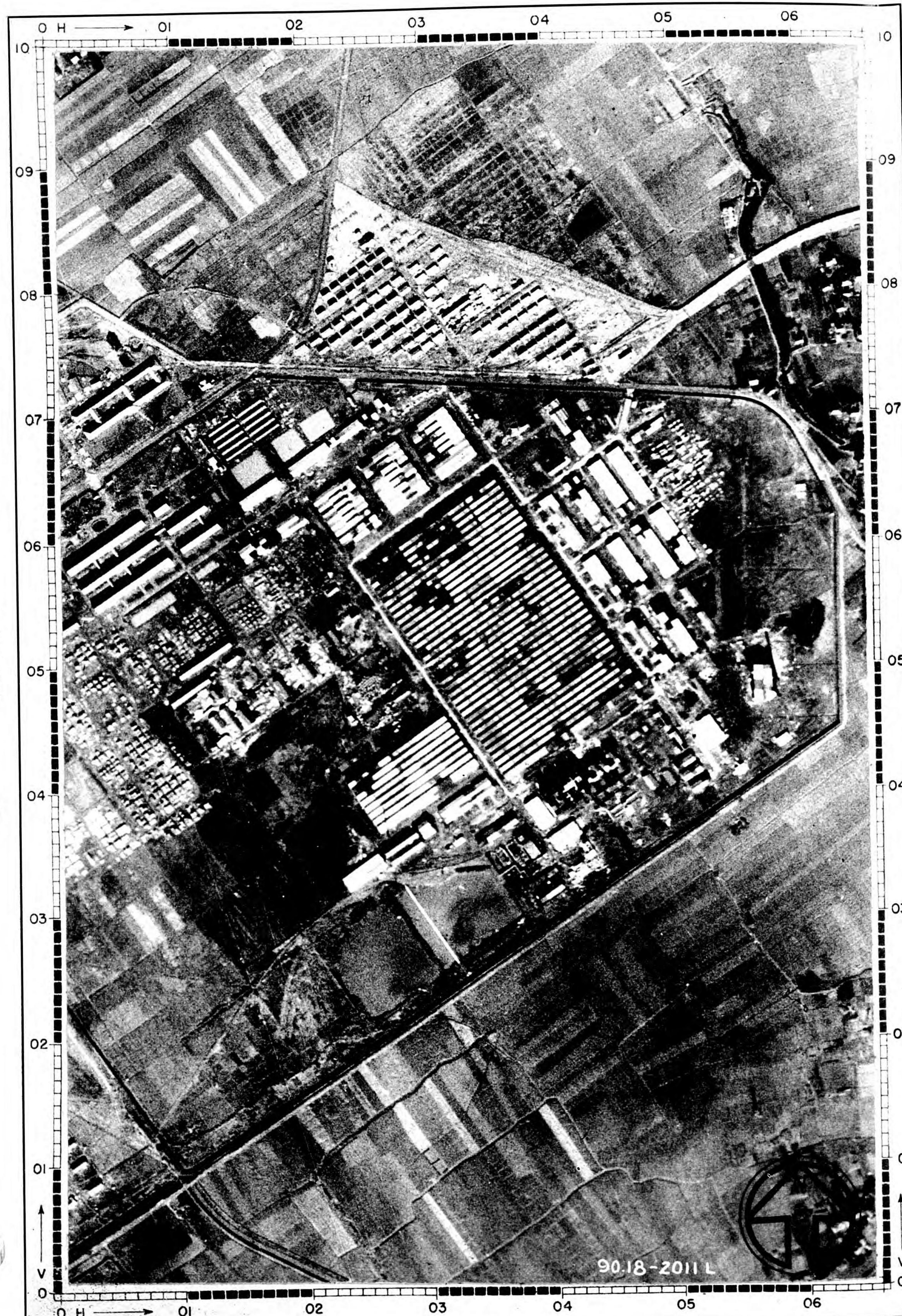
COORDINATES 34° 59' N 138° 25' E

DATE 26 APRIL 1945

PHOTOGRAPHED 5 NOVEMBER 1944



CONFIDENTIAL



- LEGEND**
- |   |  |
|---|--|
| 1-5. Offices, Plant Administration  | 26-28. Storage, Raw Materials, Parts etc.  |
| 6. Unidentified   | 29. Boiler House   |
| 7. Unidentified - E half removed as of 27 Feb. 1945   | 30. Unidentified   |
| 8. Unidentified   | 31. Eight (8) Engine Test Cells  |
| 9-11. Storage, Receiving of Rough Material, Probably some Shop Work Cleaning, Cutting, etc.   | 32. Twelve (12) Engine Test Cells  |
| 12, 13. Offices, Some Storage   | 33, 34. Storage and Shop probably related to Engine Testing                                  |
| 14, 15. Storage   | 35. Probable Utilities - pumps for water supply etc.   |
| 16. Shop Building - Main Plant building (650' x 1000')<br>Final assembly, disassembly and shipping probably occupies 10 bays at S end of the building.<br>Balance of this building parts machining and sub-assembly | 36. Possible Electric Generating from A C Engines; a transformer yard adjoins this building. |
| 17. Storage - Removed as of 27 Feb. 1945  | 37. Garage   |
| 18-23. Storage, Raw Materials, Parts etc.   | 38. Storage  |
| 24, 25. Storage - Removed as of 27 Feb. 1945  | 39. Unidentified Revetted Building   |
|   | 40, 41. Probable storage   |
|   | 42. Machine Shop, Engine parts manufacture   |

REPRINT

CONFIDENTIAL

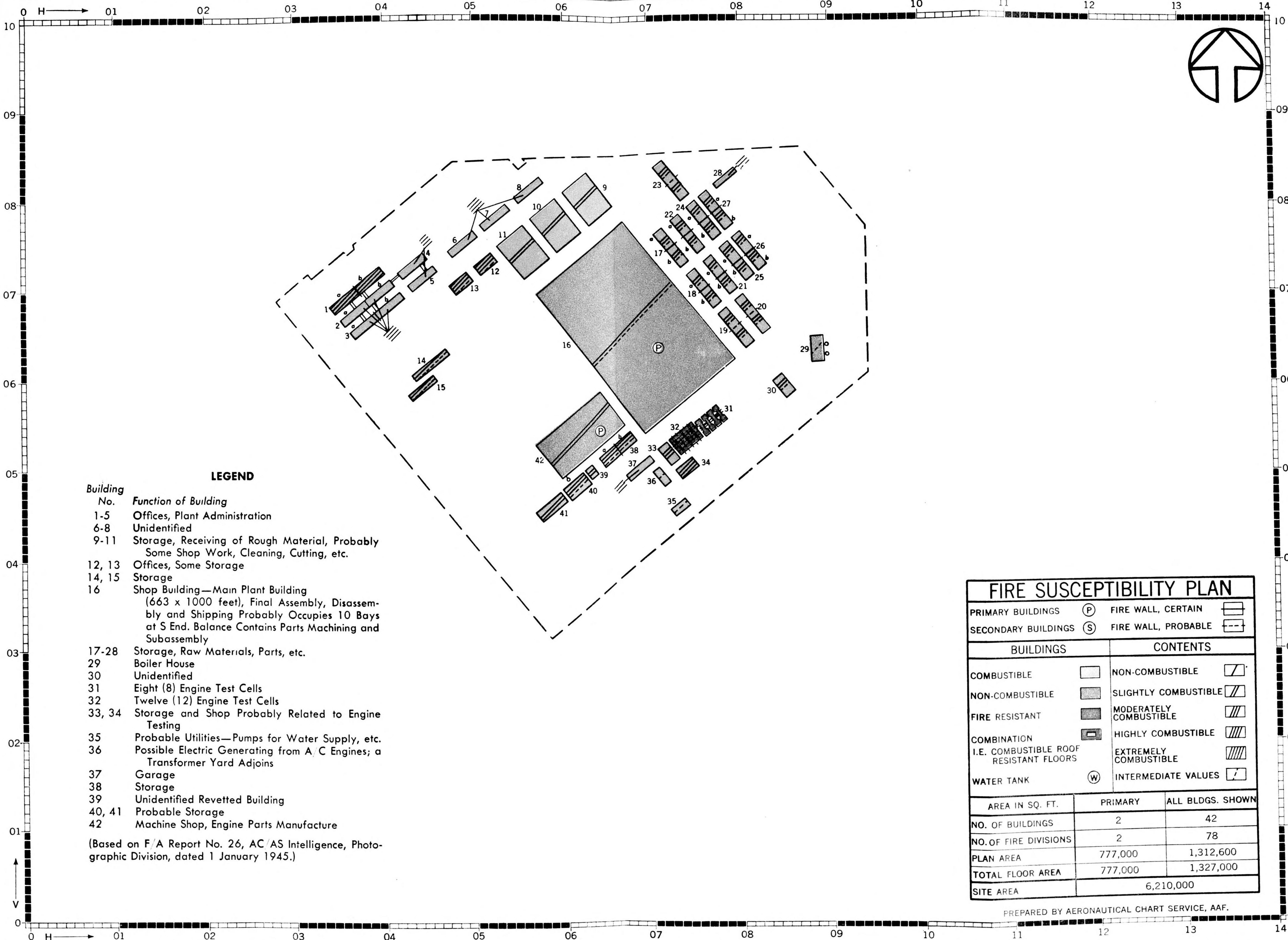
FILE NO. 553,011.56

JOINT TARGET GROUP, WASHINGTON, D. C.  
FIRE SUSCEPTIBILITY PLAN

SHIZUOKA AIRCRAFT ENGINE WORKS  
SHIZUOKA, JAPAN

SHEET . . . . . 90:18-2011-P5  
TARGET . . . . . 90:18-2011  
DATE . . . . . 20 February 1945  
COORDINATES . . . . . 34°59'N 138°25'E  
PHOTOGRAPHED . . . . . 5 November 1944

SCALE 1:6,000  
500 0 500 1000 FEET



LEGEND

- | Building No. | Function of Building   |
|--------------|--|
| 1-5          | Offices, Plant Administration  |
| 6-8          | Unidentified   |
| 9-11         | Storage, Receiving of Rough Material, Probably Some Shop Work, Cleaning, Cutting, etc.   |
| 12, 13       | Offices, Some Storage  |
| 14, 15       | Storage  |
| 16           | Shop Building—Main Plant Building (663 x 1000 feet), Final Assembly, Disassembly and Shipping Probably Occupies 10 Bays at S End. Balance Contains Parts Machining and Subassembly |
| 17-28        | Storage, Raw Materials, Parts, etc.  |
| 29           | Boiler House   |
| 30           | Unidentified   |
| 31           | Eight (8) Engine Test Cells  |
| 32           | Twelve (12) Engine Test Cells  |
| 33, 34       | Storage and Shop Probably Related to Engine Testing  |
| 35           | Probable Utilities—Pumps for Water Supply, etc.  |
| 36           | Possible Electric Generating from A/C Engines; a Transformer Yard Adjoins  |
| 37           | Garage   |
| 38           | Storage  |
| 39           | Unidentified Revetted Building   |
| 40, 41       | Probable Storage   |
| 42           | Machine Shop, Engine Parts Manufacture   |

(Based on F/A Report No. 26, AC/AS Intelligence, Photographic Division, dated 1 January 1945.)

FIRE SUSCEPTIBILITY PLAN		
PRIMARY BUILDINGS (P)	FIRE WALL, CERTAIN	
SECONDARY BUILDINGS (S)	FIRE WALL, PROBABLE	
BUILDINGS	CONTENTS	
COMBUSTIBLE	NON-COMBUSTIBLE	
NON-COMBUSTIBLE	SLIGHTLY COMBUSTIBLE	
FIRE RESISTANT	MODERATELY COMBUSTIBLE	
COMBINATION I.E. COMBUSTIBLE ROOF RESISTANT FLOORS	HIGHLY COMBUSTIBLE	
WATER TANK (W)	EXTREMELY COMBUSTIBLE	
	INTERMEDIATE VALUES	
AREA IN SQ. FT.	PRIMARY	ALL BLDGS. SHOWN
NO. OF BUILDINGS	2	42
NO. OF FIRE DIVISIONS	2	78
PLAN AREA	777,000	1,312,600
TOTAL FLOOR AREA	777,000	1,327,000
SITE AREA	6,210,000	

PREPARED BY AERONAUTICAL CHART SERVICE, AAF.

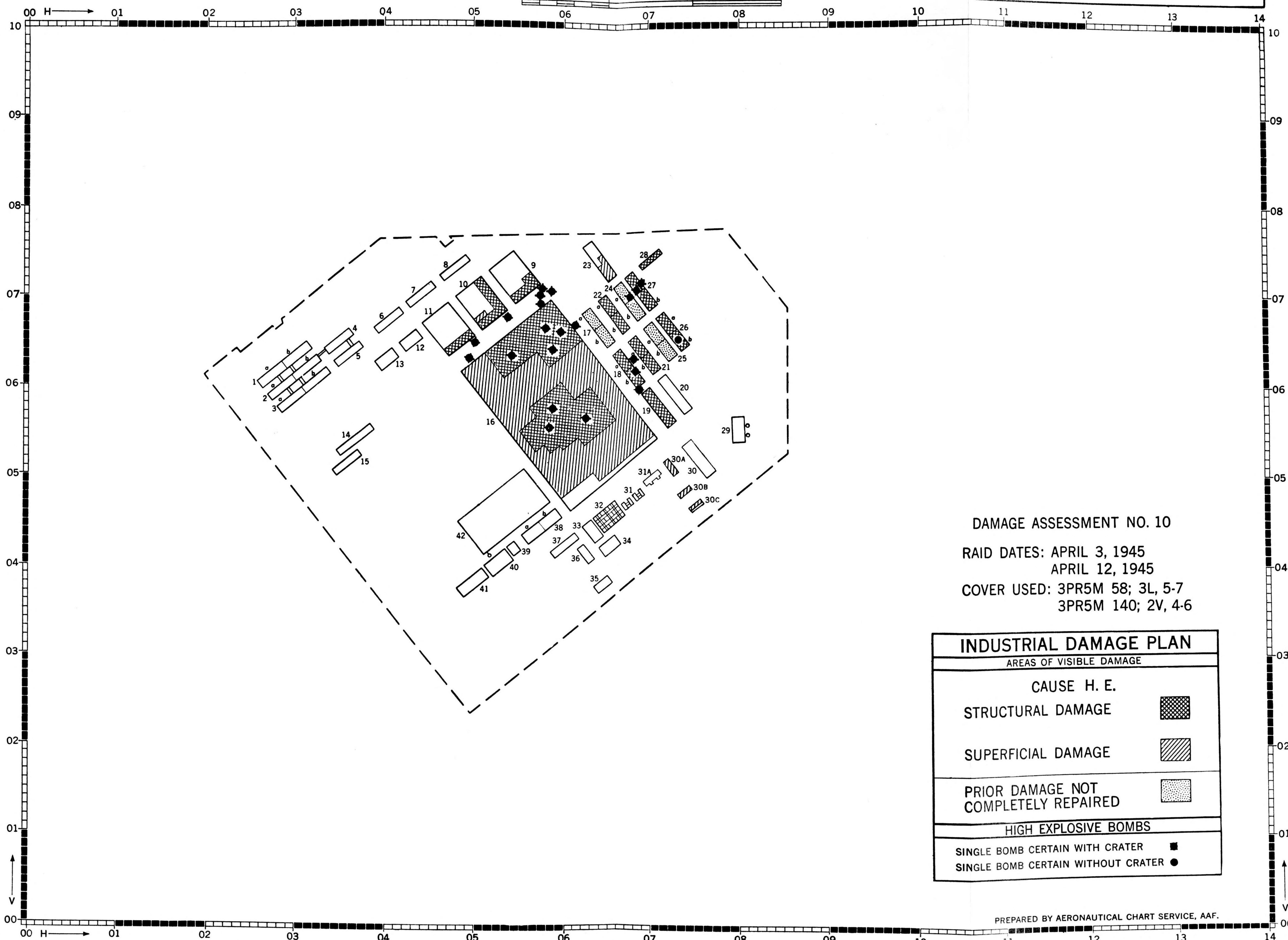
REPRINT

JOINT TARGET GROUP  
WASHINGTON, D.C.  
INDUSTRIAL DAMAGE PLAN

# SHIZUOKA AIRCRAFT ENGINE WORKS SHIZUOKA, JAPAN

SHEET 90:18 - 2011 - DP  
DATE 7 JULY 1945  
TARGET 90:18 - 2011  
COORDINATES 34°59' NORTH 138°25' EAST  
PHOTOGRAPHED 13 APRIL 1945

SCALE 1:6,000  
500 0 500 1000 FEET



DAMAGE ASSESSMENT NO. 10  
RAID DATES: APRIL 3, 1945  
APRIL 12, 1945  
COVER USED: 3PR5M 58; 3L, 5-7  
3PR5M 140; 2V, 4-6

INDUSTRIAL DAMAGE PLAN	
AREAS OF VISIBLE DAMAGE	
CAUSE H. E.	
STRUCTURAL DAMAGE	
SUPERFICIAL DAMAGE	
PRIOR DAMAGE NOT COMPLETELY REPAIRED	
HIGH EXPLOSIVE BOMBS	
SINGLE BOMB CERTAIN WITH CRATER	
SINGLE BOMB CERTAIN WITHOUT CRATER	

PREPARED BY AERONAUTICAL CHART SERVICE, AAF.



JOINT TARGET GROUP, WASHINGTON, D. C.  
TARGET LOCATION SHEET

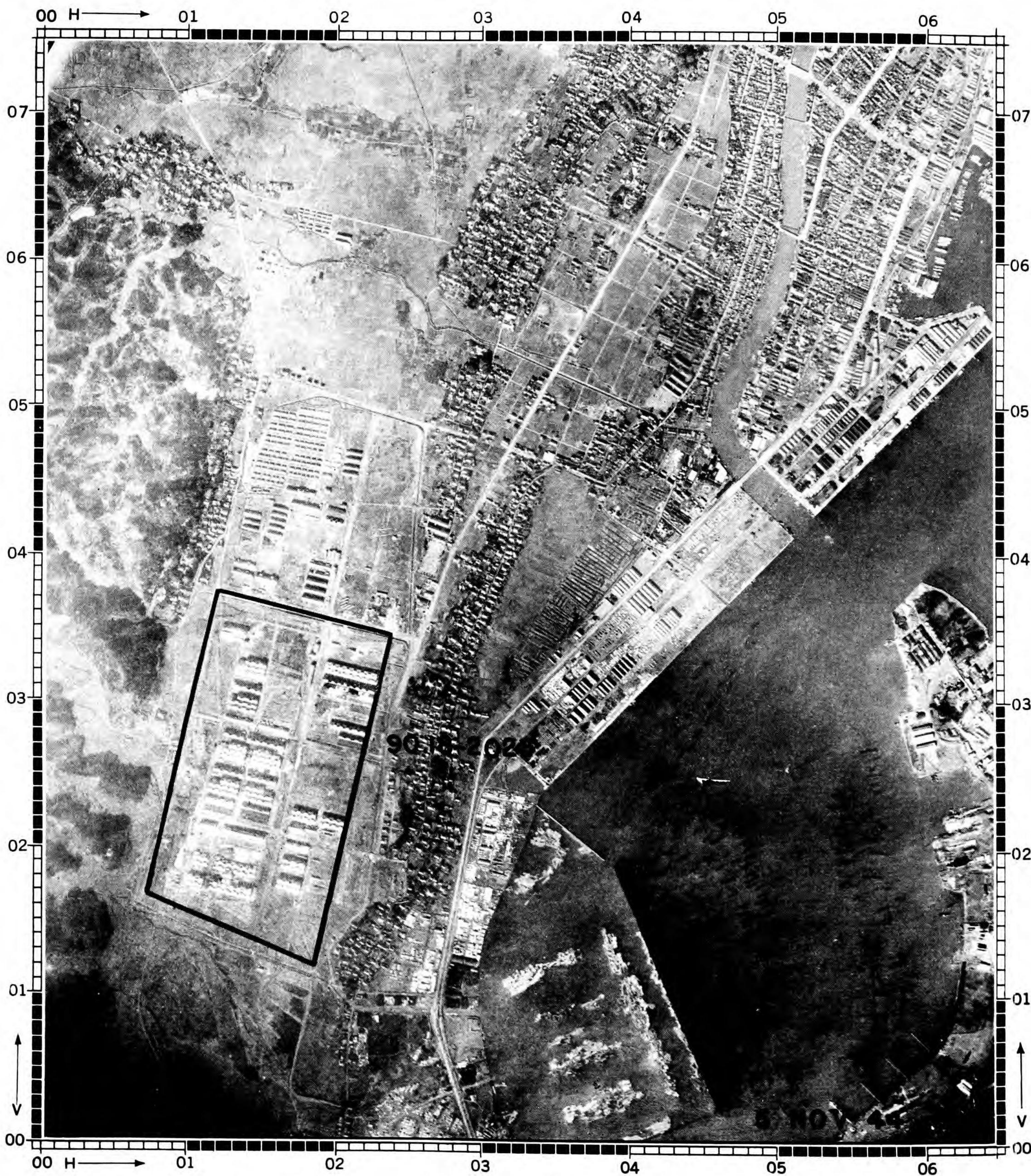
# SUMITOMO LIGHT METALS CO., SHIMIZU PLANT

## SHIMIZU JAPAN

SHEET ..... 90:18-2023-TL  
DATE ..... 16 May 1945  
TARGET ..... 90:18-2023  
CATEGORY ... End Prdt. Ind.-AIRCRAFT  
COORDINATES ..... 34°59'N 138°29'E  
ALTITUDE ..... 10 feet

### SIGNIFICANCE:

This plant was originally known as Shimizu Nippon Gakki and is reported to be producing plywood and alloy aircraft parts. It is also reported to be making wings and fuselages.



LARGE SCALE ILLUSTRATION—SCALE APPROX.: 1:16,900



SMALL SCALE ILLUSTRATION—SCALE APPROX.: 1:64,000

JOINT TARGET GROUP, WASHINGTON, D. C.  
TARGET LOCATION SHEET

SUMITOMO LIGHT METALS CO., SHIZUOKA PLANT  
SHIZUOKA JAPAN

SHEET ..... 90:18-2024-TL  
DATE ..... 16 May 1945  
TARGET ..... 90:18-2024  
CATEGORY ..End Prdt. Ind.-AIRCRAFT  
COORDINATES .... 34° 58' N 138° 25' E  
ALTITUDE ..... 40 feet

SIGNIFICANCE:

This plant is reported to be producing aircraft parts although it is not known whether they are engine or airframe parts. The machine shop type buildings suggest that engine parts are more likely to be the product rather than airframe components.



REPRINT

LARGE SCALE ILLUSTRATION—SCALE APPROX.: 1:16,900

SMALL SCALE ILLUSTRATION—SCALE APPROX.: 1:64,000

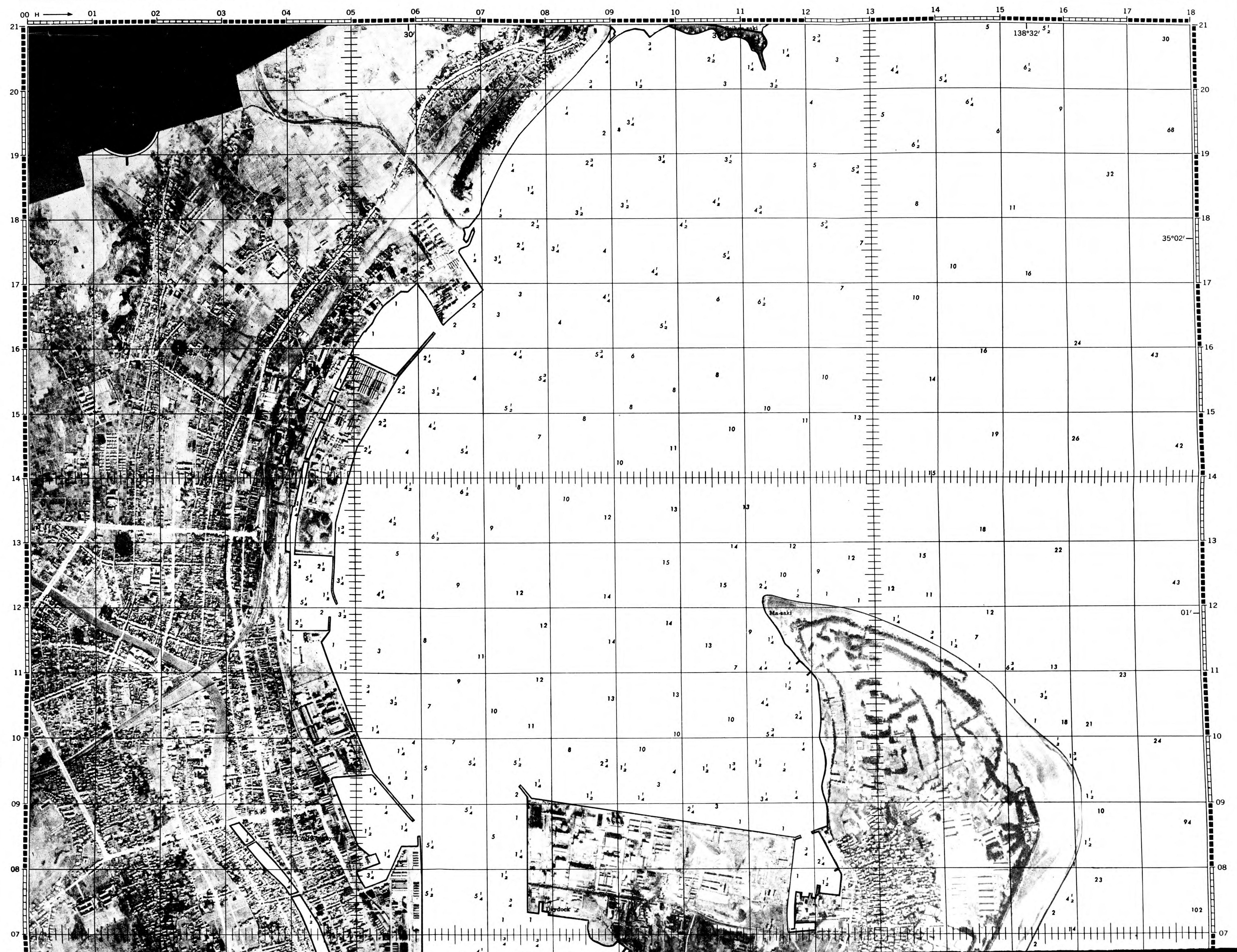
PUBLISHED IN OFFICE OF AC/AS INTELLIGENCE, A.A.F., BY COMBINED PERSONNEL OF UNITED STATES AND BRITISH SERVICES FOR THE USE OF ALLIED FORCES.

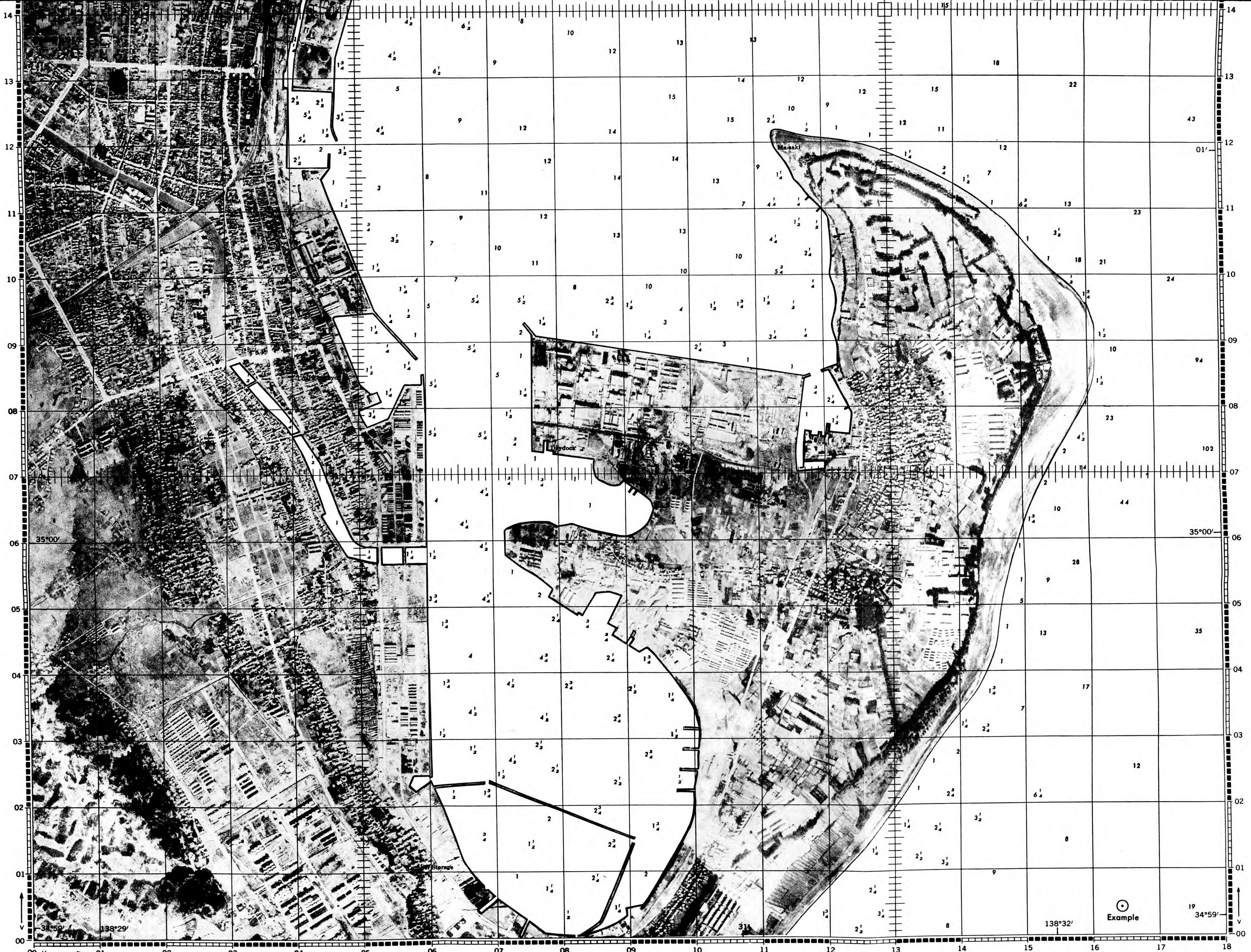
# SHIMIZU, JAPAN

Scale 1:12,500

RESTRICTED

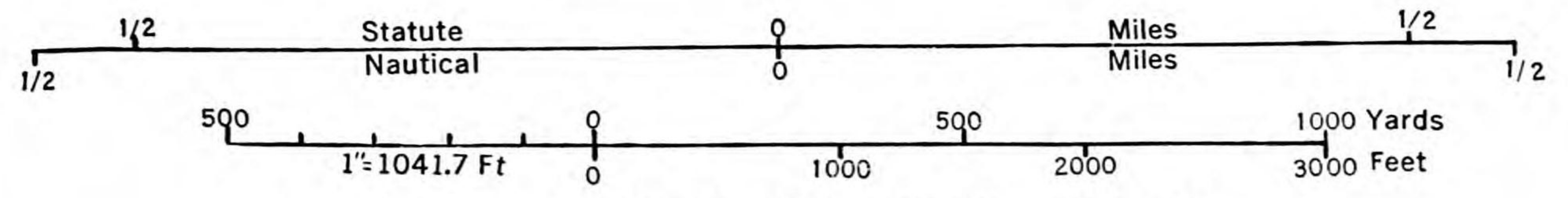
ILLUSTRATION No. 90.18-3581 P5P  
DATE 7 May 1945





EXAMPLE Grid Reference Reading:  
 Shimizu (or 90.18-3581)PSP H164 V004  
 Always Use Three Digits Preceded by H & V

Prepared under the direction of the Aeronautical Chart Service by Aero Service Corp.,  
 Phila., Pa. 1945 from Uncontrolled Mosaic by APL, AAA, USDA, Wash., D.C. 1944.  
 Aerial photographs flown by U.S.A.A.F. (Sortie): 4M-25 Nov. '44. A.A.F. City Plan, Shimizu '44.



DEPTH IN FATHOMS AT NEARLY LOWEST LOW WATER

Published in Office of AC/AS Intelligence,  
 A.A.F., by Combined Personnel of U.S. and  
 British Services for the Use of Allied Forces.

RESTRICTED

File No. 554,581.66

SHIMIZU, PSP