

TRAITÉ
D'ANATOMIE
DESCRIPTIVE,

RÉDIGÉ

D'APRÈS L'ORDRE ADOPTÉ A LA FACULTÉ DE MÉDECINE DE PARIS.

PAR M. H. CLOQUET.

PLANCHES.

MYOLOGIE.

CET ATLAS SE DIVISE EN CINQ PARTIES QUI SE VENDENT SÉPARÉMENT.

OSTÉOLOGIE. 59 Pl. fig. n. : 15 fr. ; fig. col. : 22 fr. || NÉVROLOGIE 56 Pl. fig. n. : 10 fr. ; fig. col. : 25 fr.
MYOLOGIE 56 Pl. fig. n. : 40 fr. ; fig. col. : 25 fr. || ANGÉIOLOGIE 60 Pl. fig. n. : 18 fr. ; fig. col. : 38 fr.
SPLANCHNOLOGIE et EMBRYOLOGIE 45 Pl. fig. n. : 12 fr. ; fig. col. : 27 fr.

PARIS.

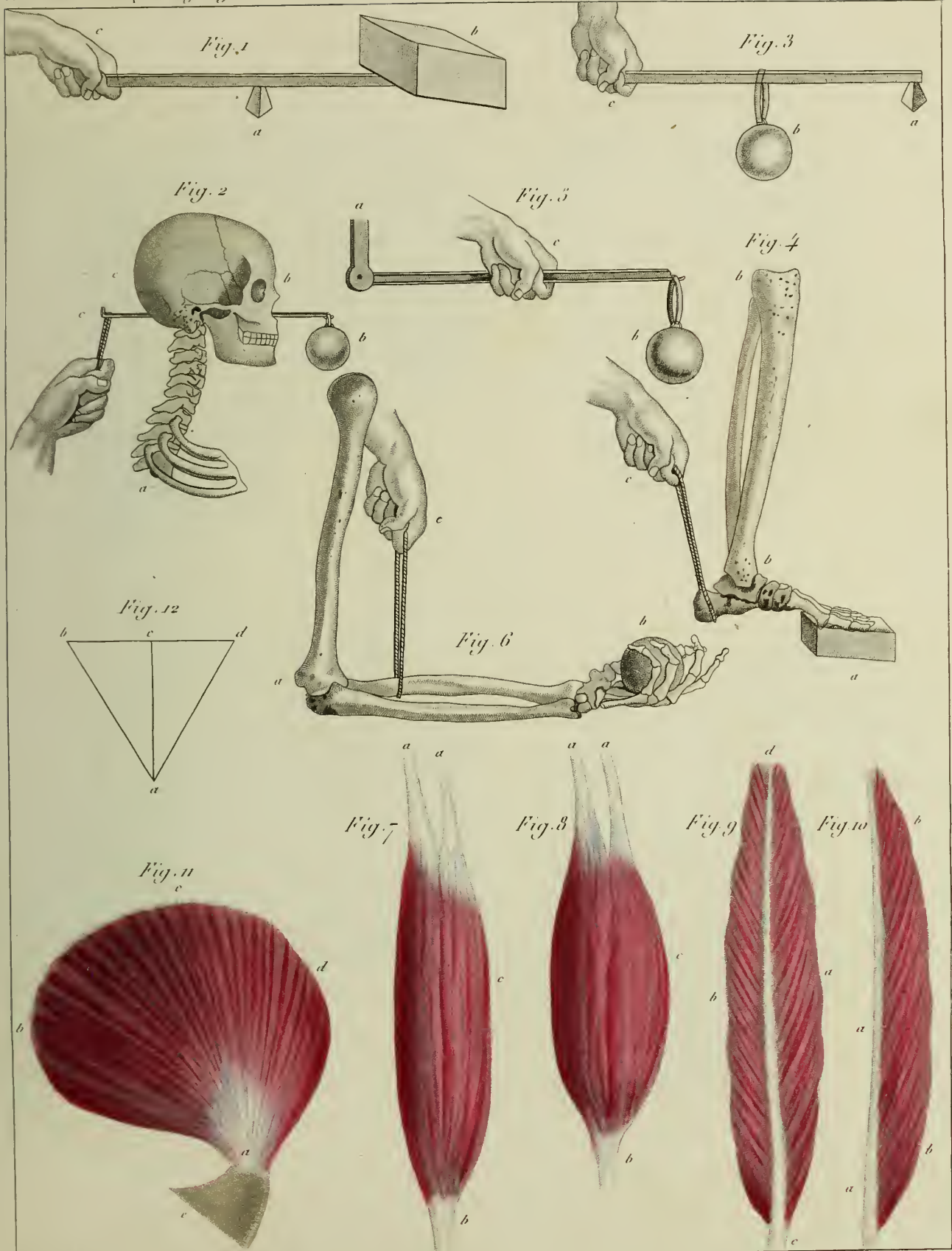
LIBRAIRIE MÉDICALE ET SCIENTIFIQUE DE CROCHARD,

PLACE DE L'ÉCOLE DE MÉDECINE, N. 13.

1855.

18102/c

Atlas de la France





Digitized by the Internet Archive
in 2016

https://archive.org/details/b22014688_0002

Fig. 3



Fig. 1

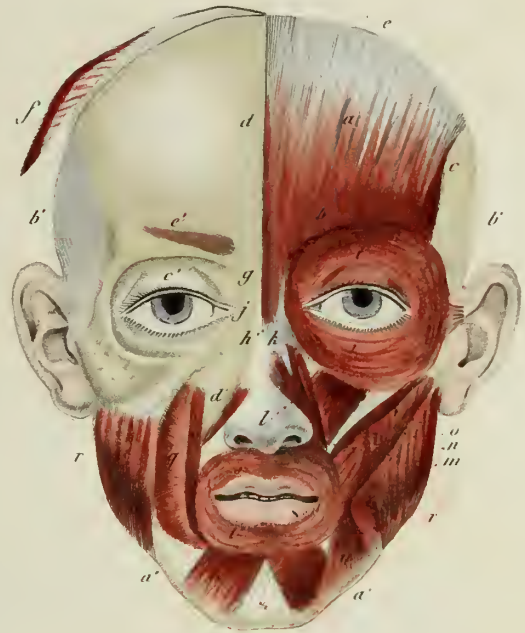
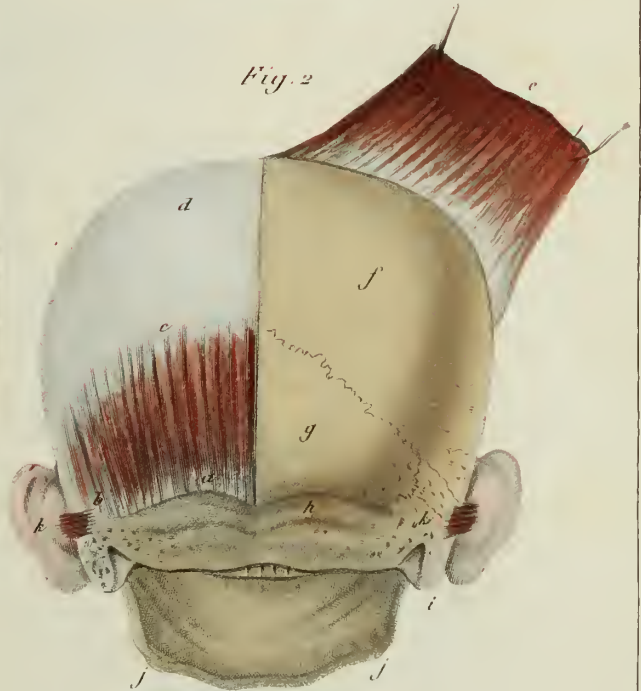


Fig. 4

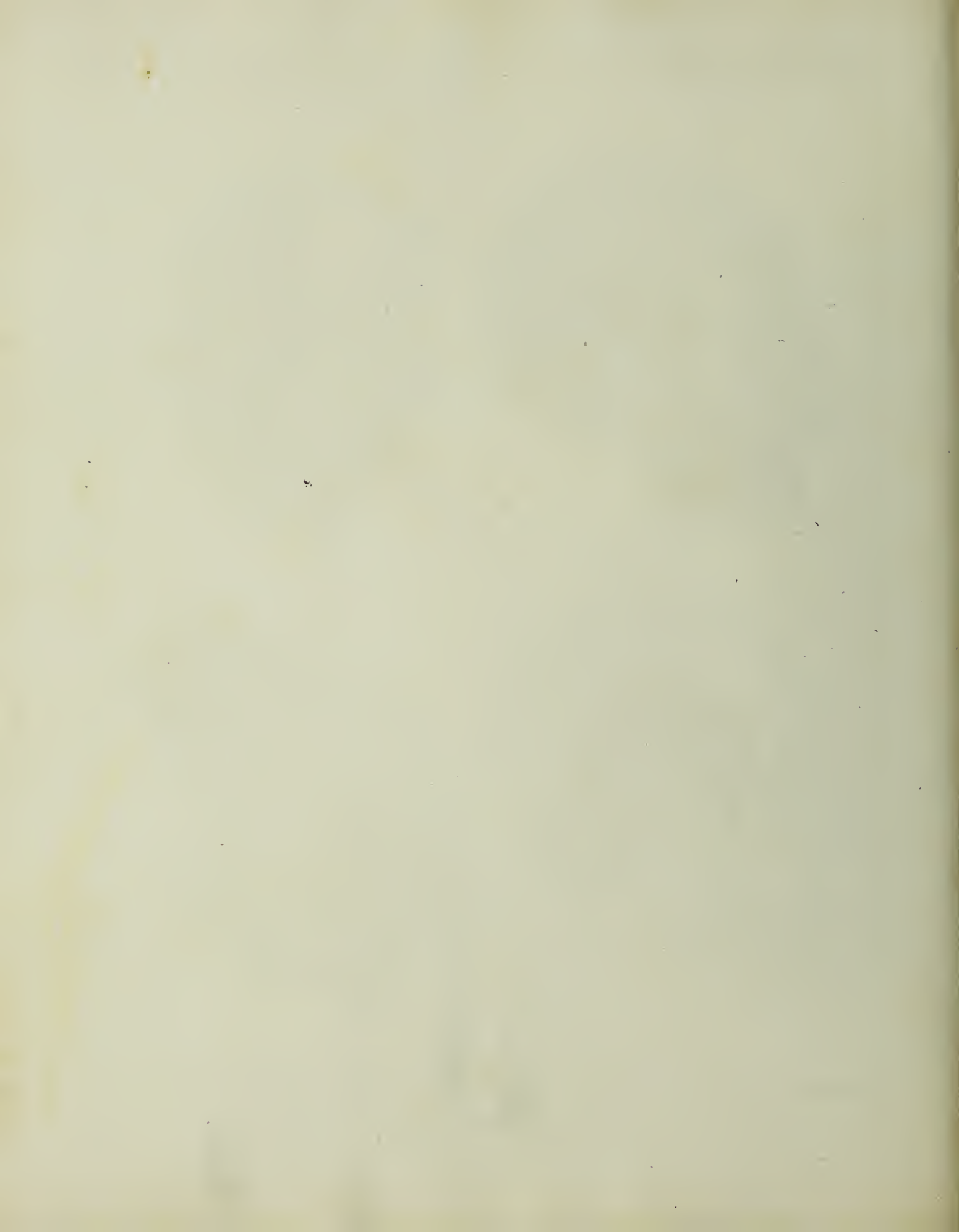


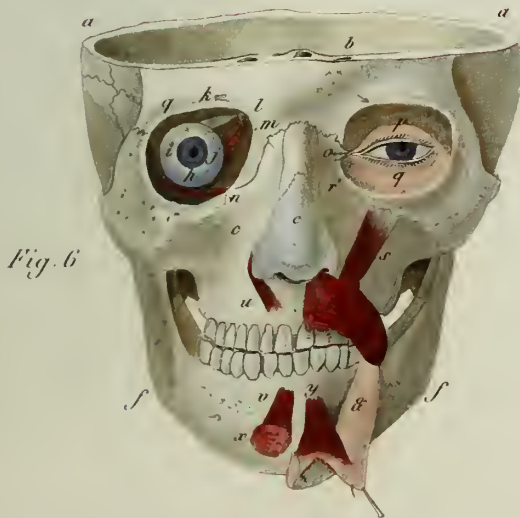
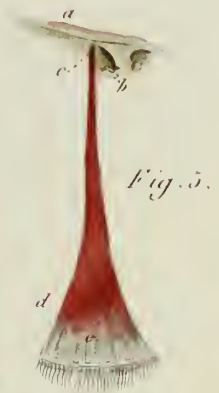
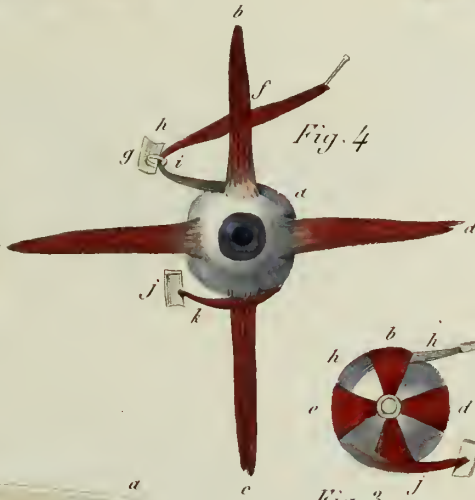
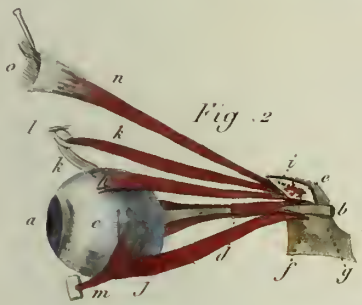
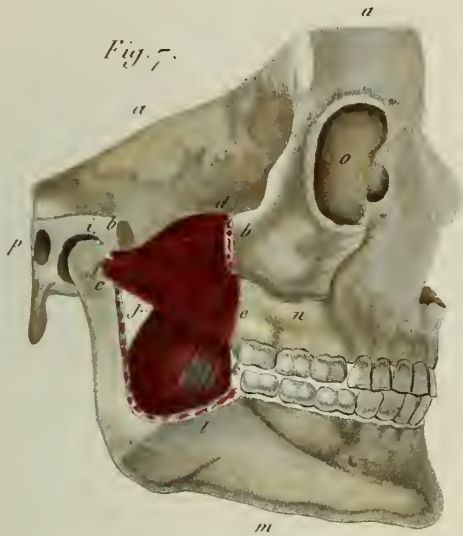
Fig. 2



P. Duménil Del.

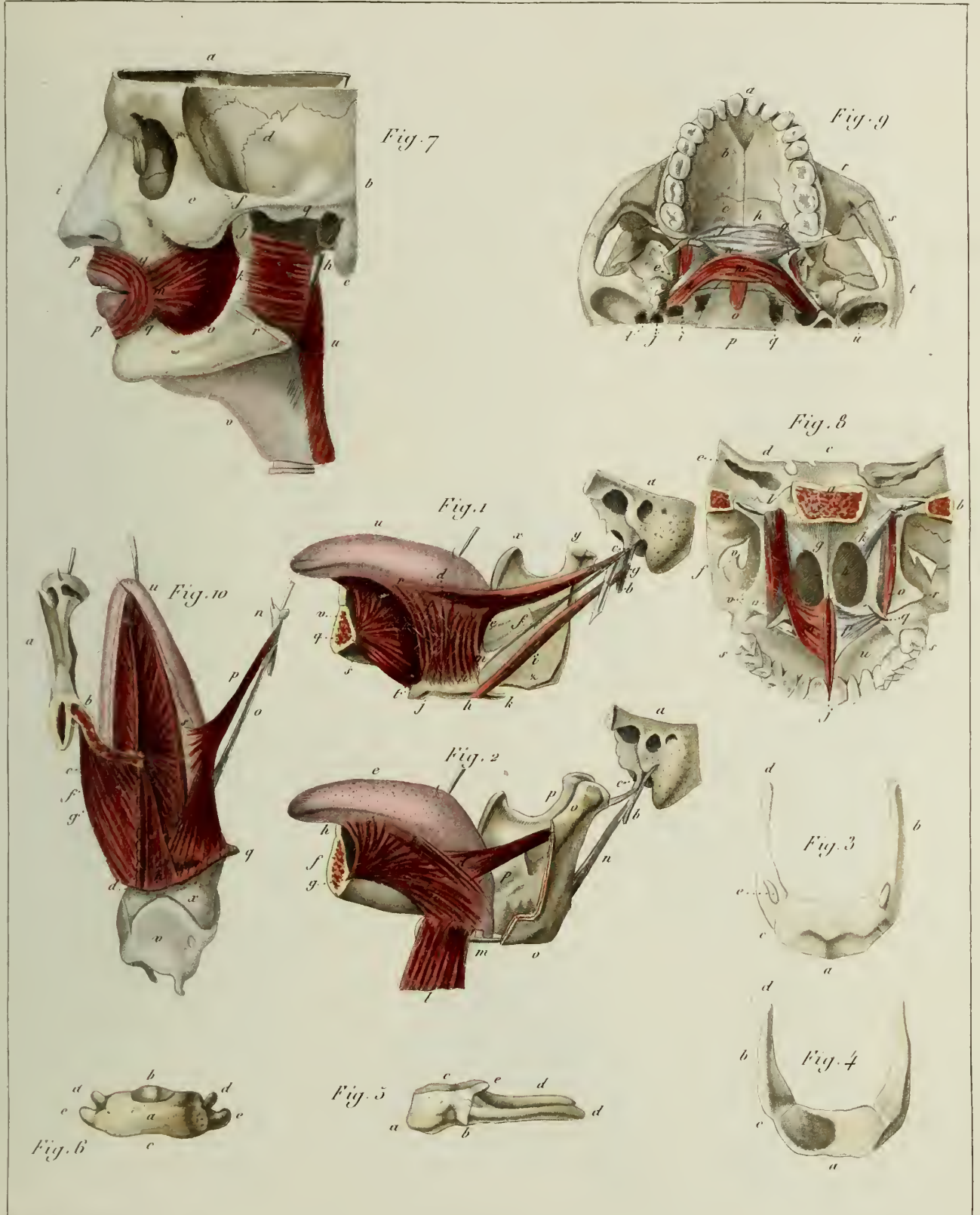
MUSCLES DE LA TÊTE





P Duménil Dir!

MUSCLES DE LA FACE. MUSCLES DE L'OEIL



P. Duménil Dir.

MUSCLES DE LA LANGUE ET DU VOILE DU PALAIS.

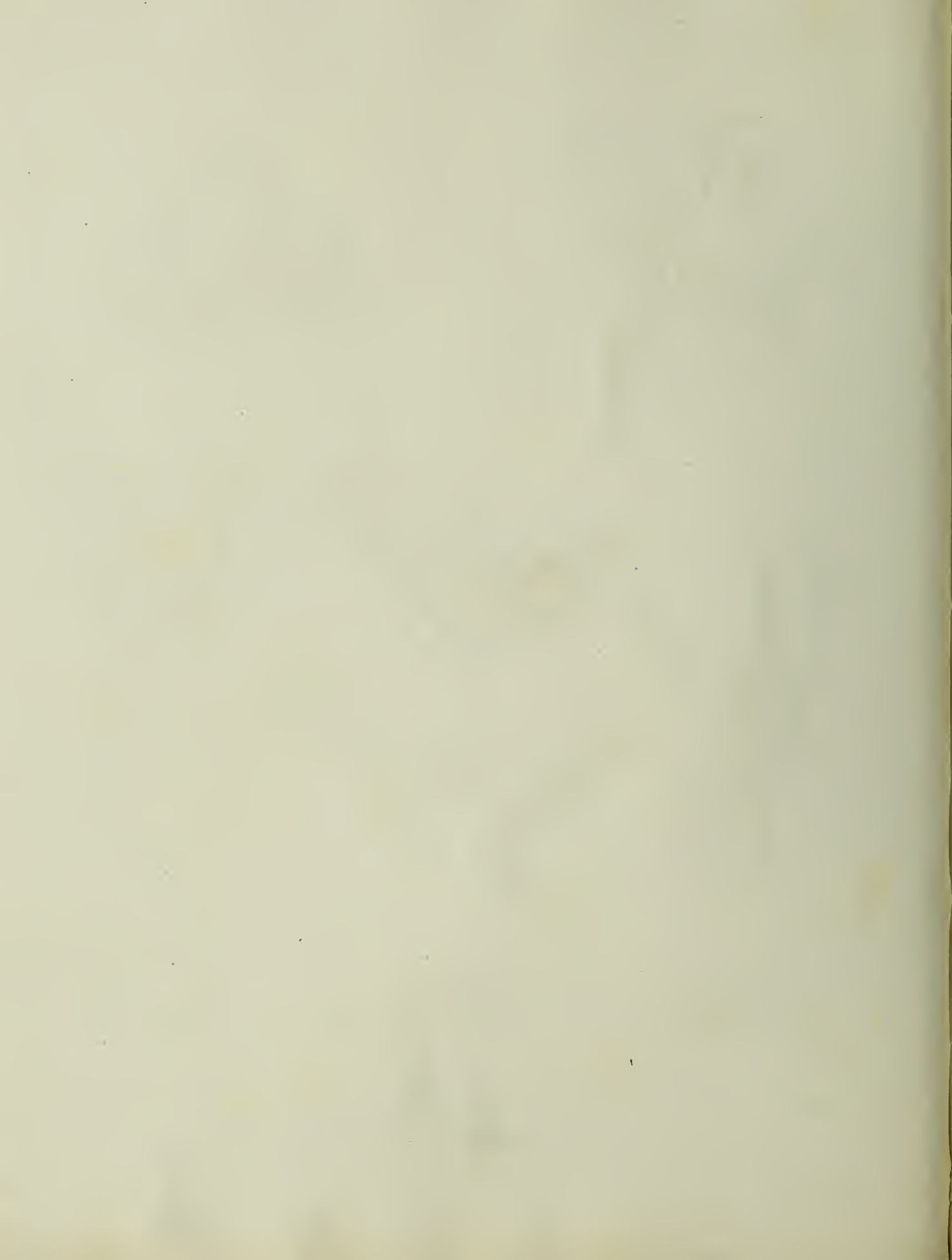


Fig. 2

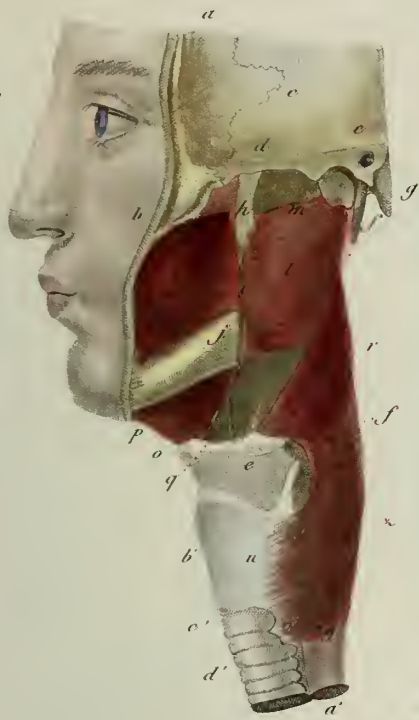


Fig. 1

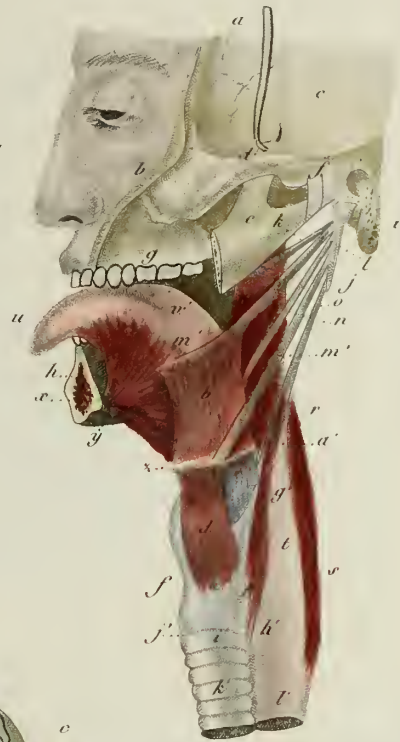


Fig. 3

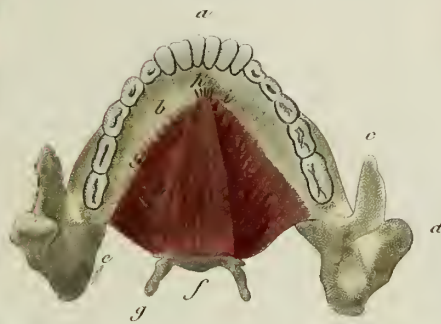


Fig. 5

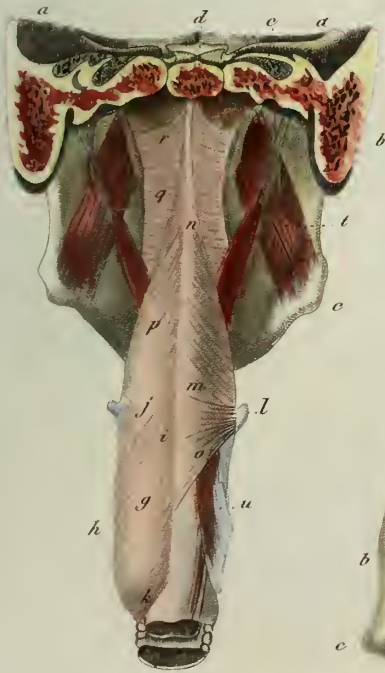
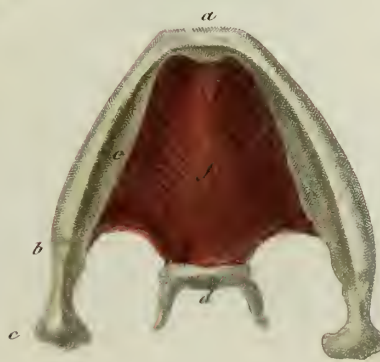


Fig. 6

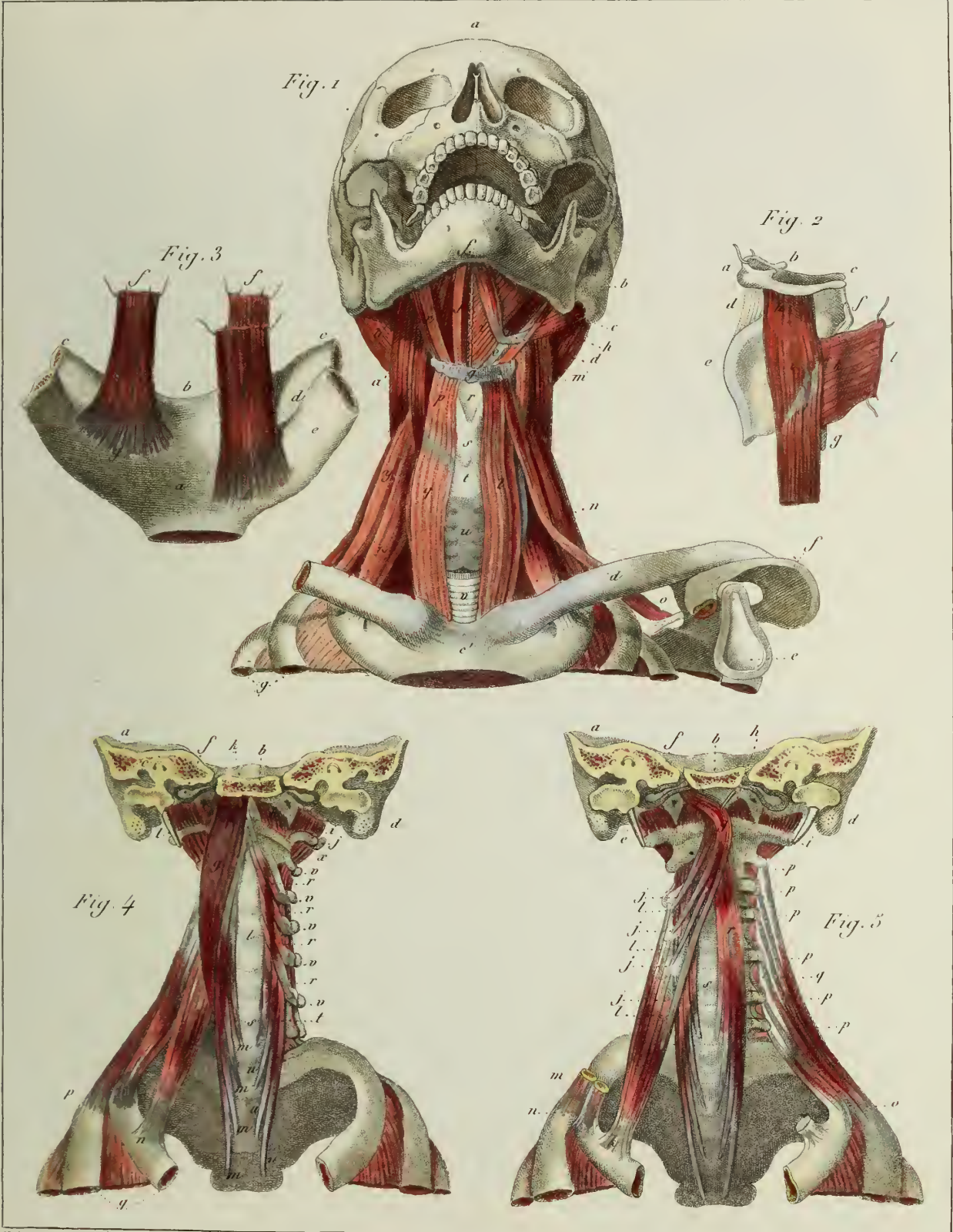


Fig. 4



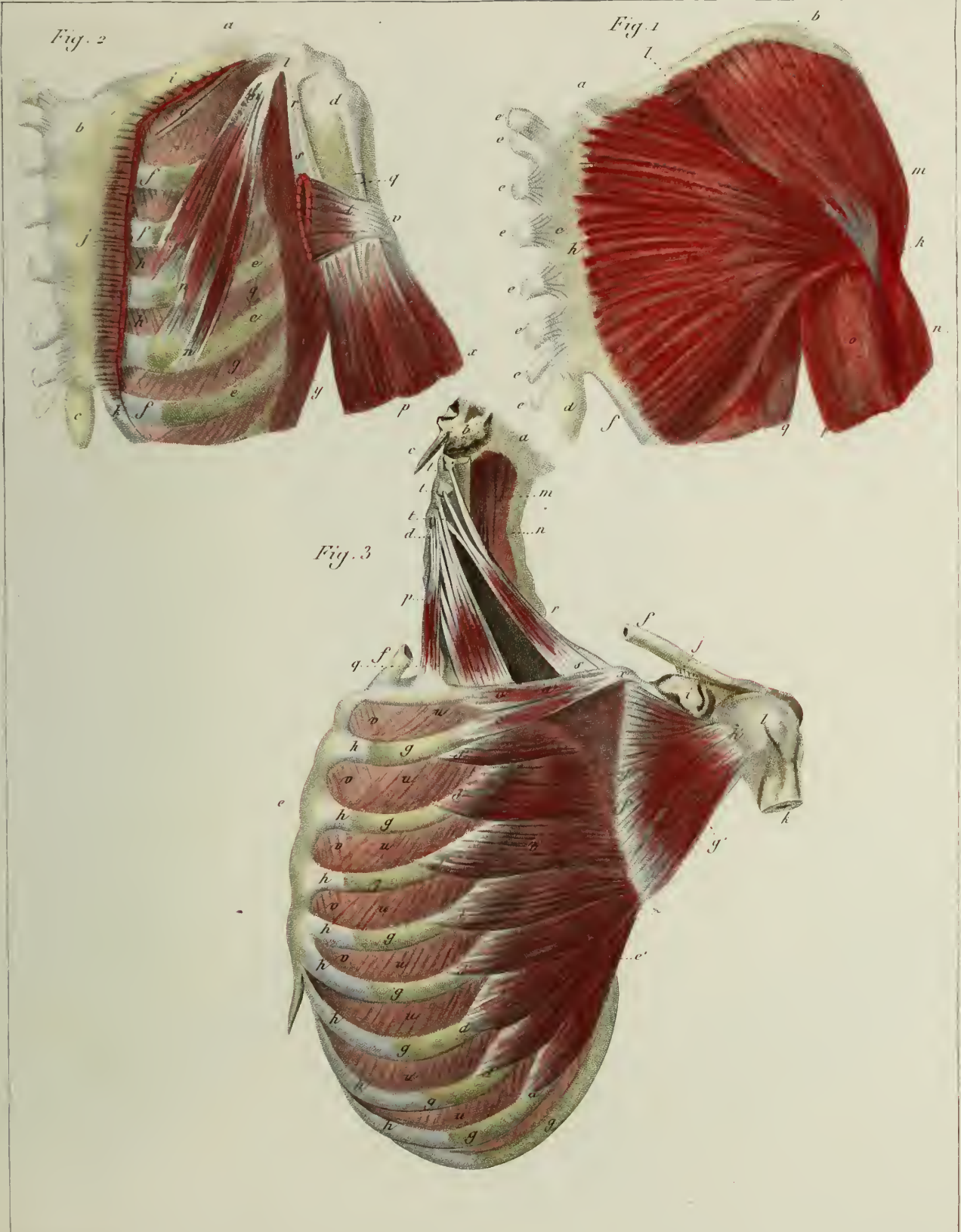
P. Duménil Del.

MUSCLES DU PHARYNX.



P Duménil Dir.

MUSCLES DU COU



P. Duménil Del.

MUSCLES DE L'ÉPAULE ET DE LA POITRINE.

Fig. 3

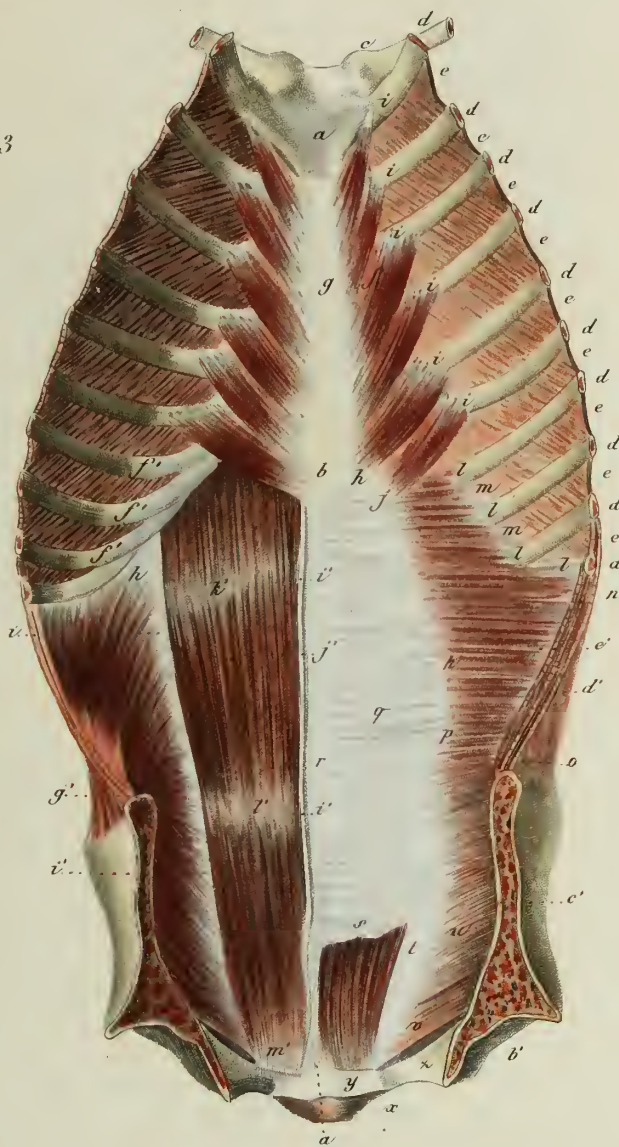


Fig. 1

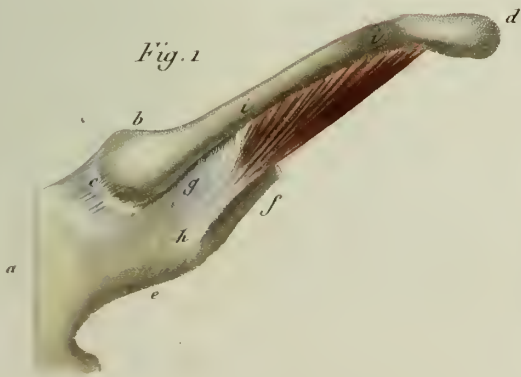
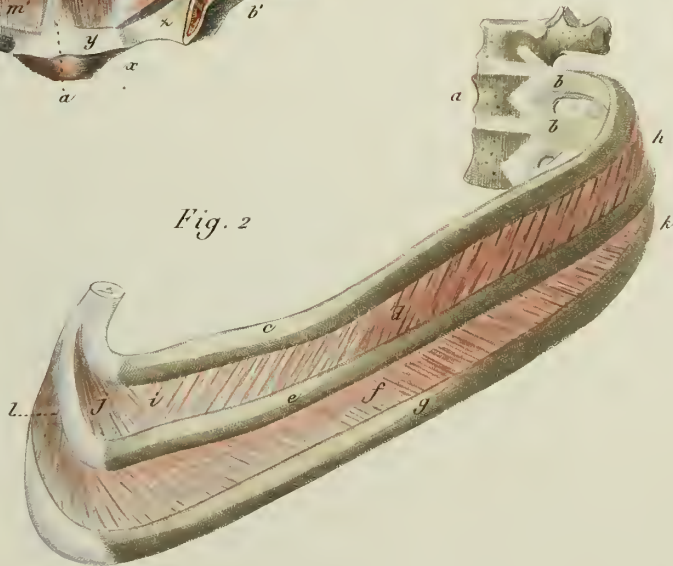


Fig. 2



P. Duménil Dir.

MUSCLES DU TRONC

Fig. 1

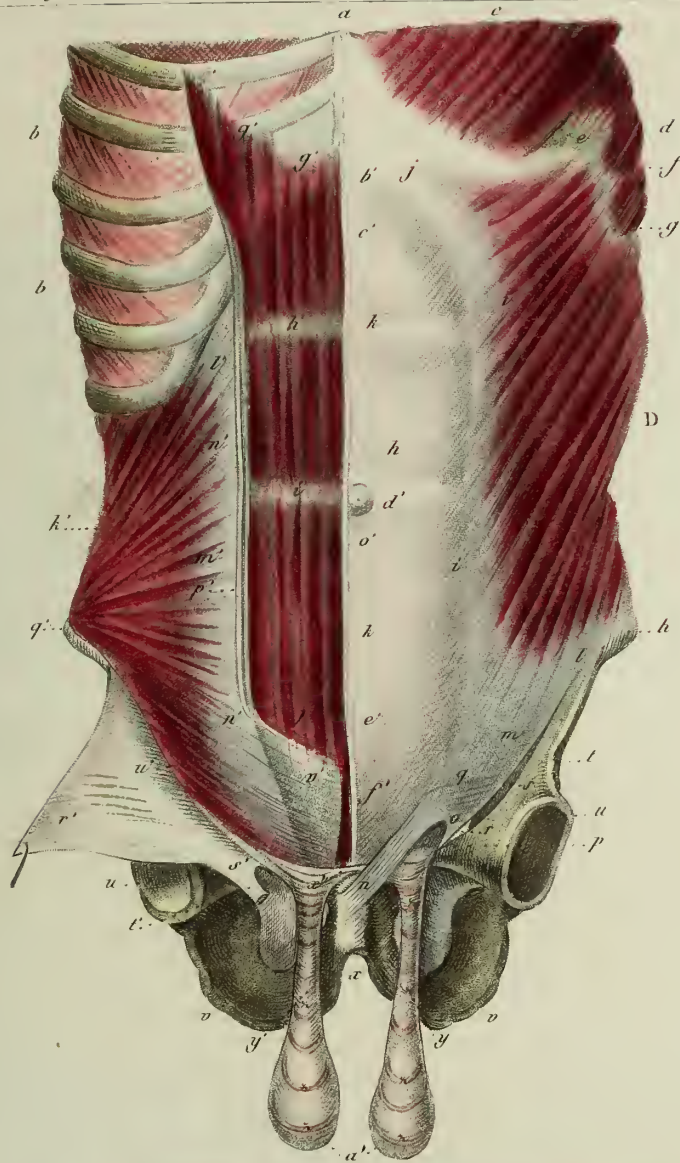
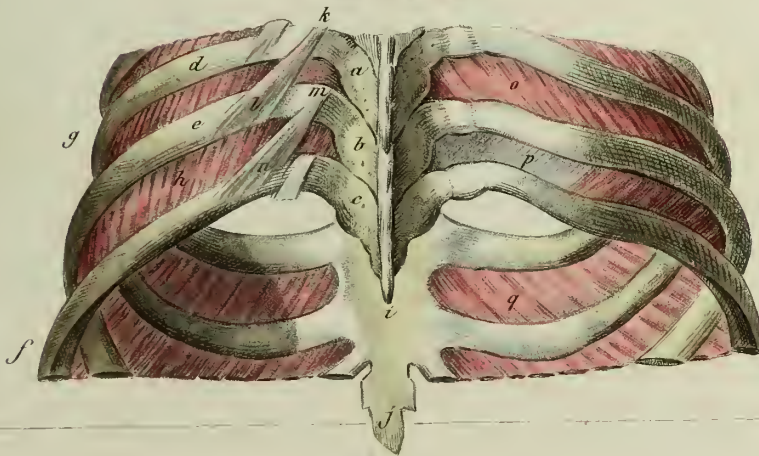


Fig. 2



P. Duménil Del.

MUSCLES DU TRONC.

Fig. 2

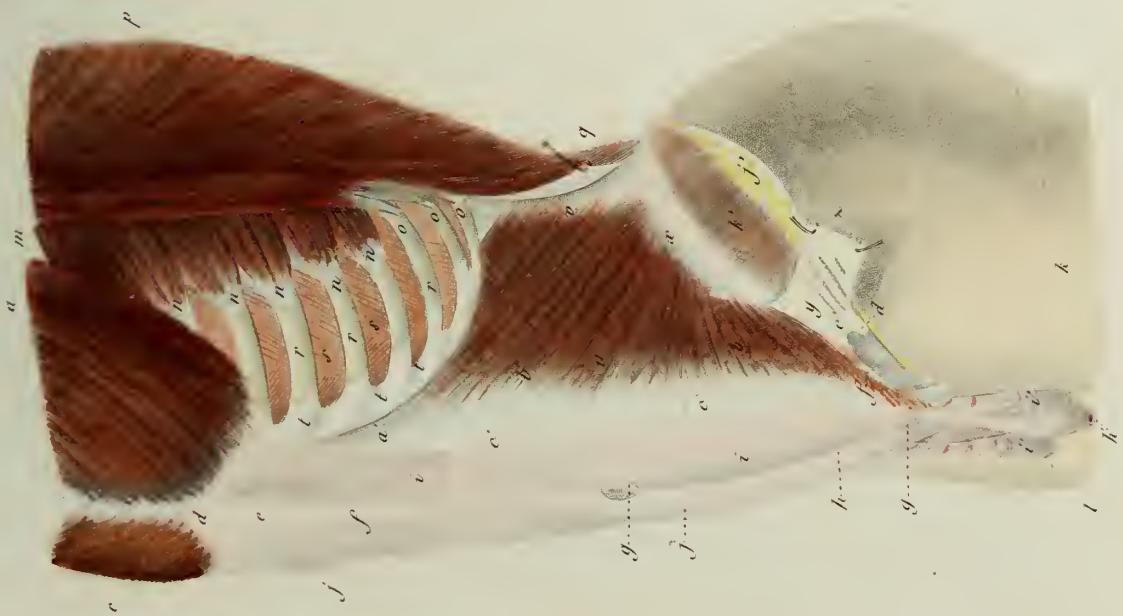


Fig. 1

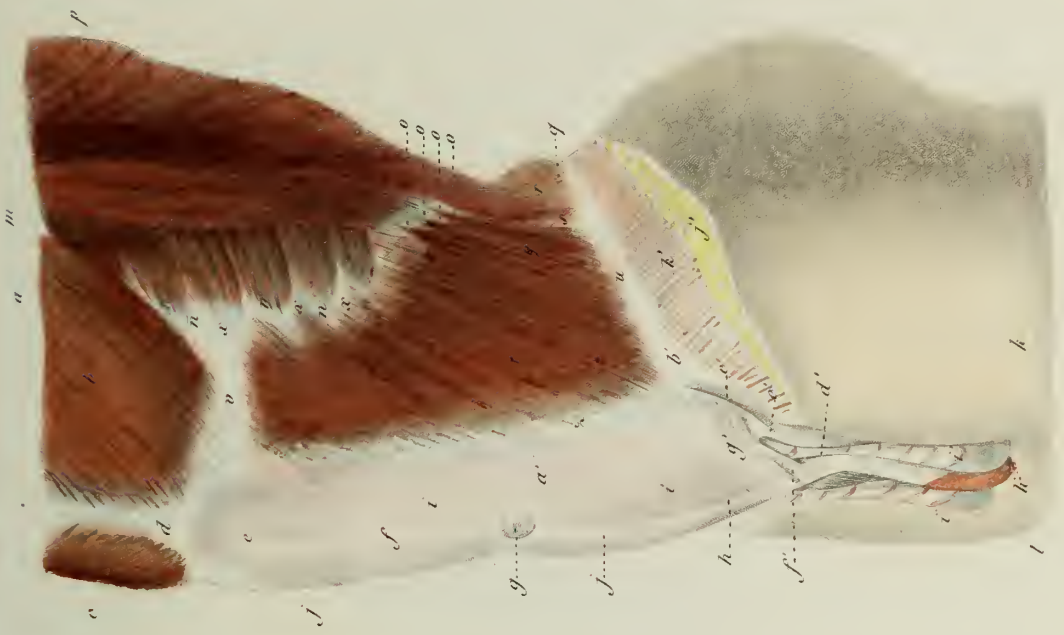


Fig. 1

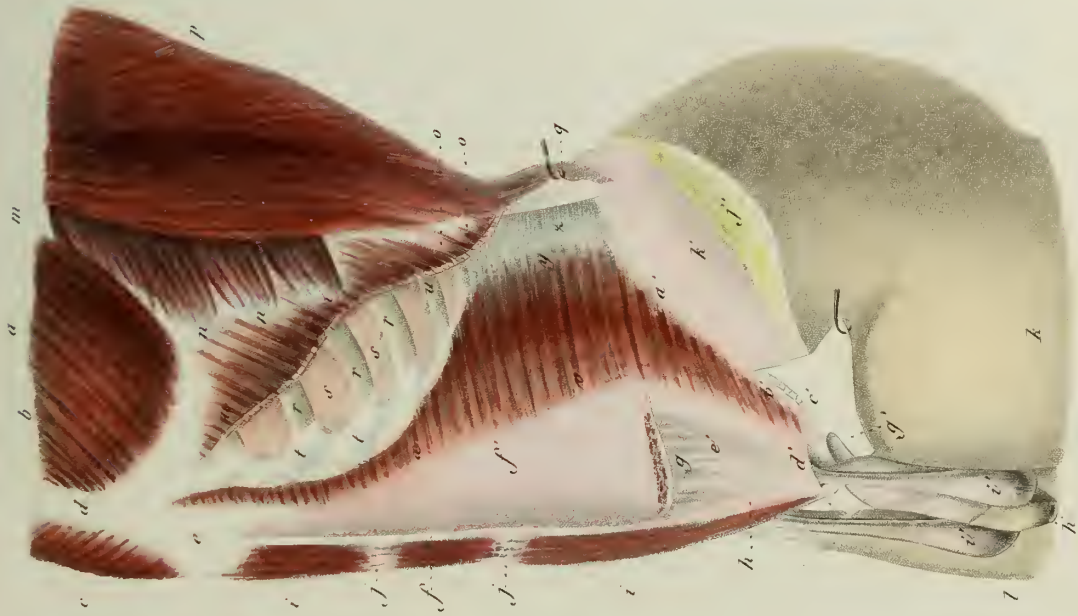
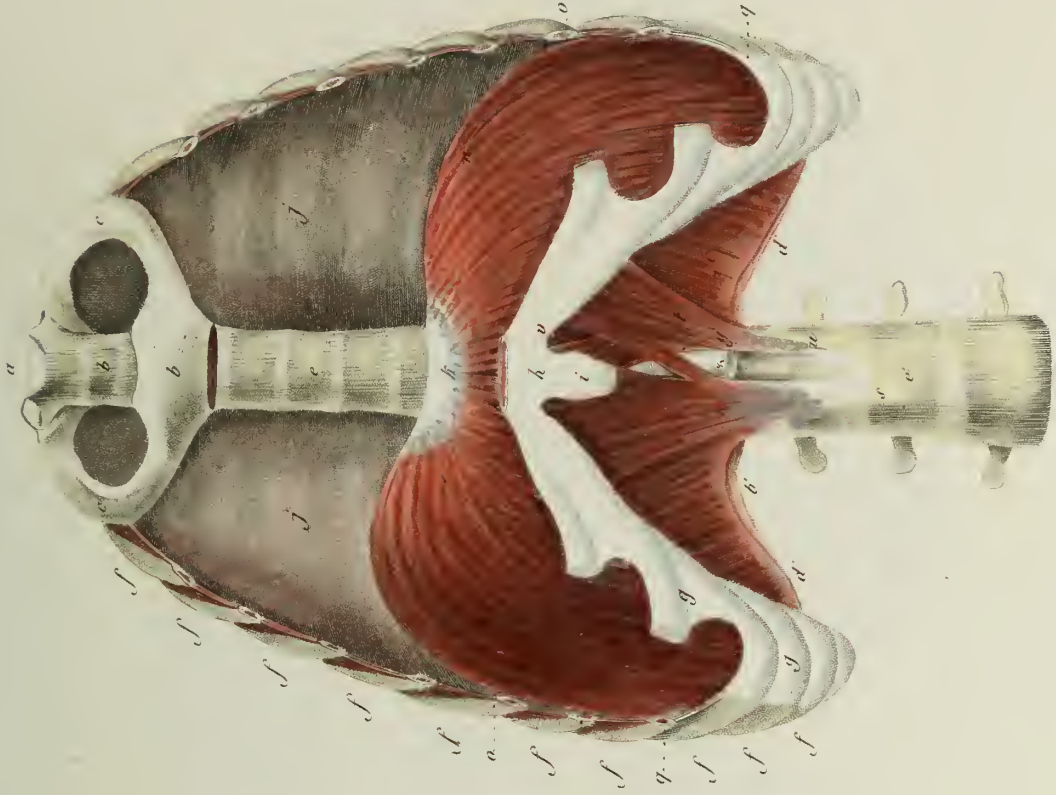
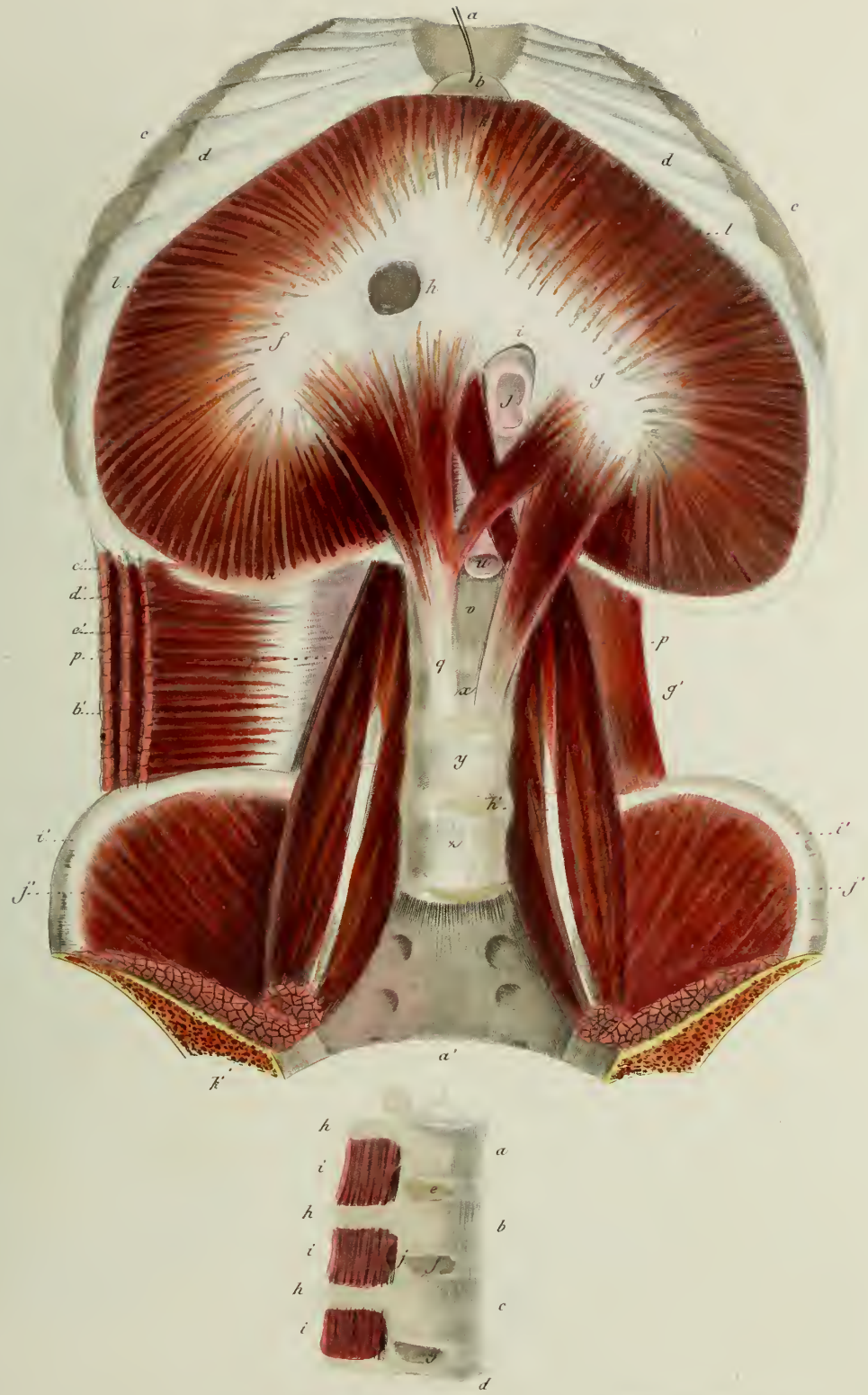


Fig. 2





P. Duménil Dir.

MUSCLES DU TRONC

Fig. 1

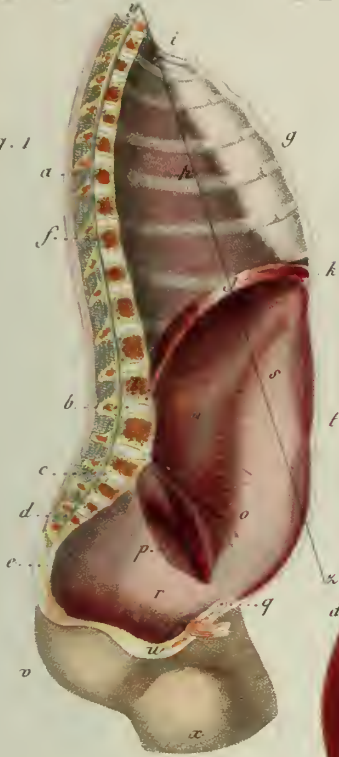


Fig. 2



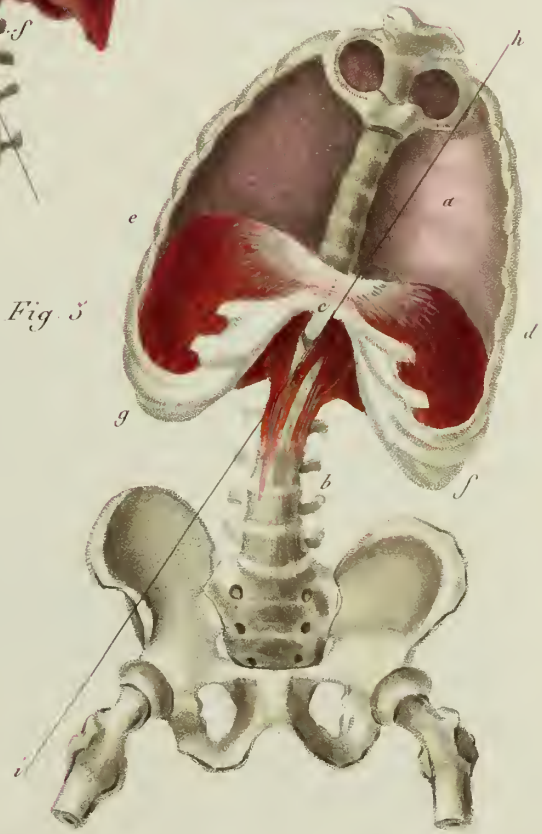
Fig. 3



Fig. 4



Fig. 5



P. Duménil Dir.

MUSCLES ET CAVITÉS DU TRONC.

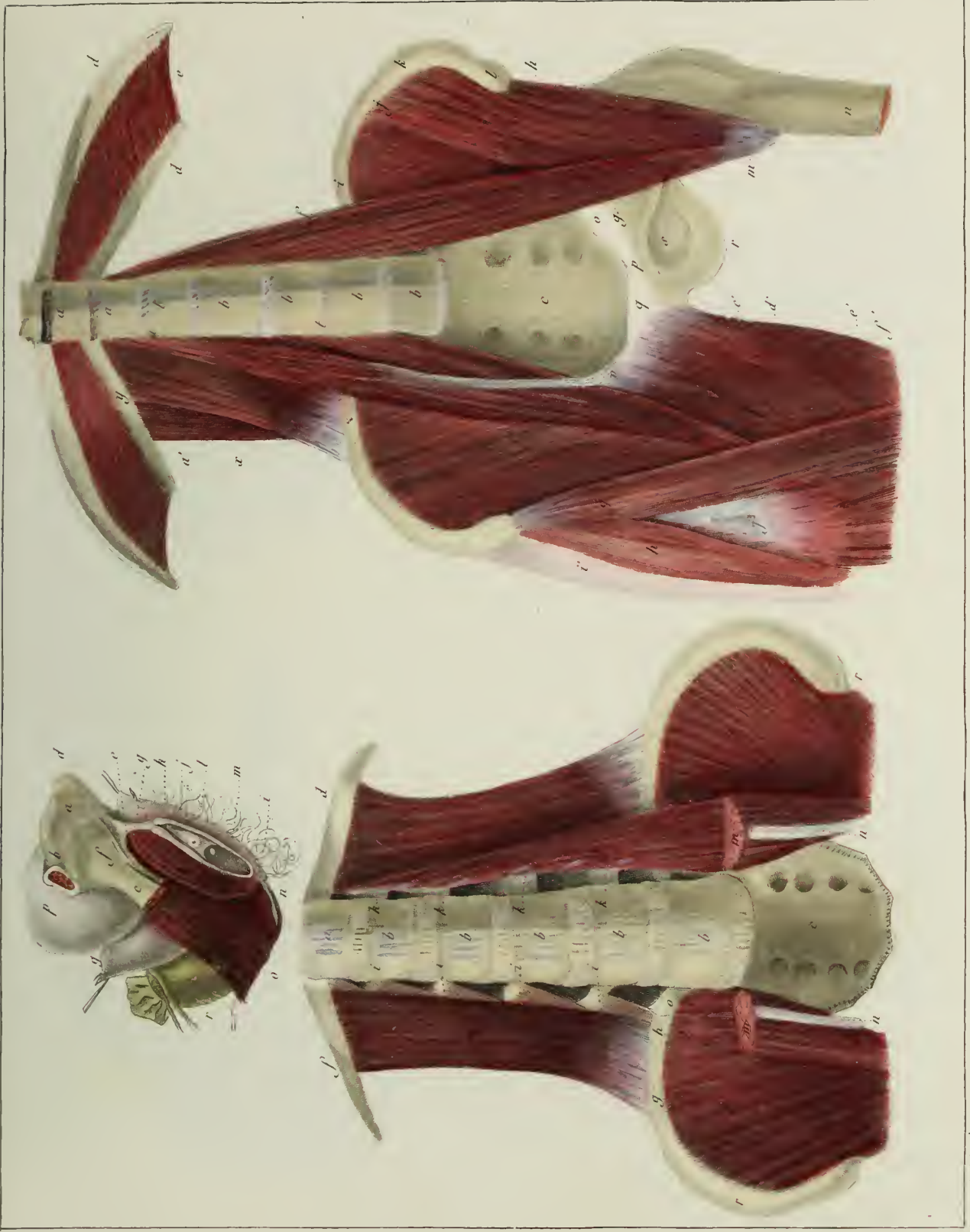


Fig. 1



Fig. 2

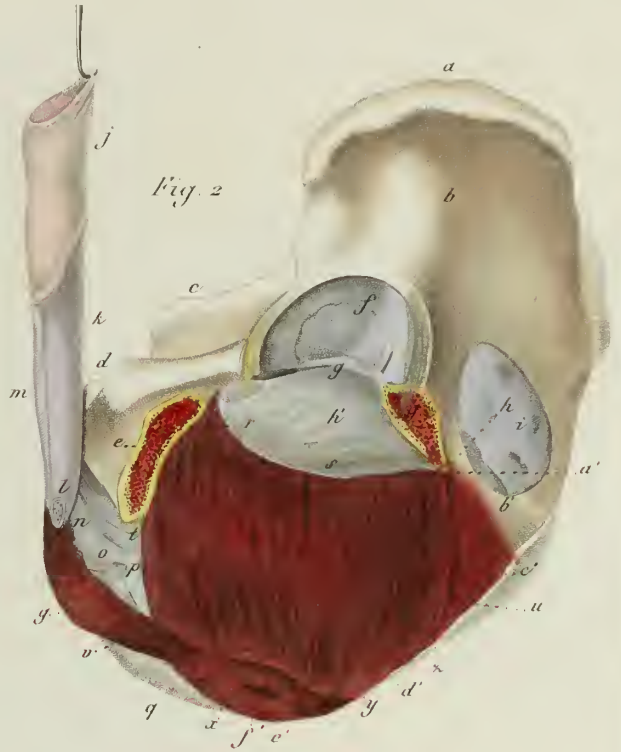
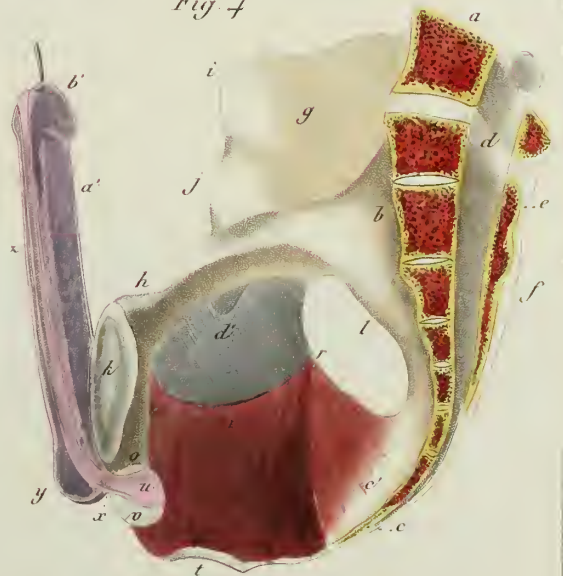


Fig. 3



Fig. 4



P. Duménil Del.

MUSCLES DU PÉRINÉ ET DE LA RÉGION ANALE.

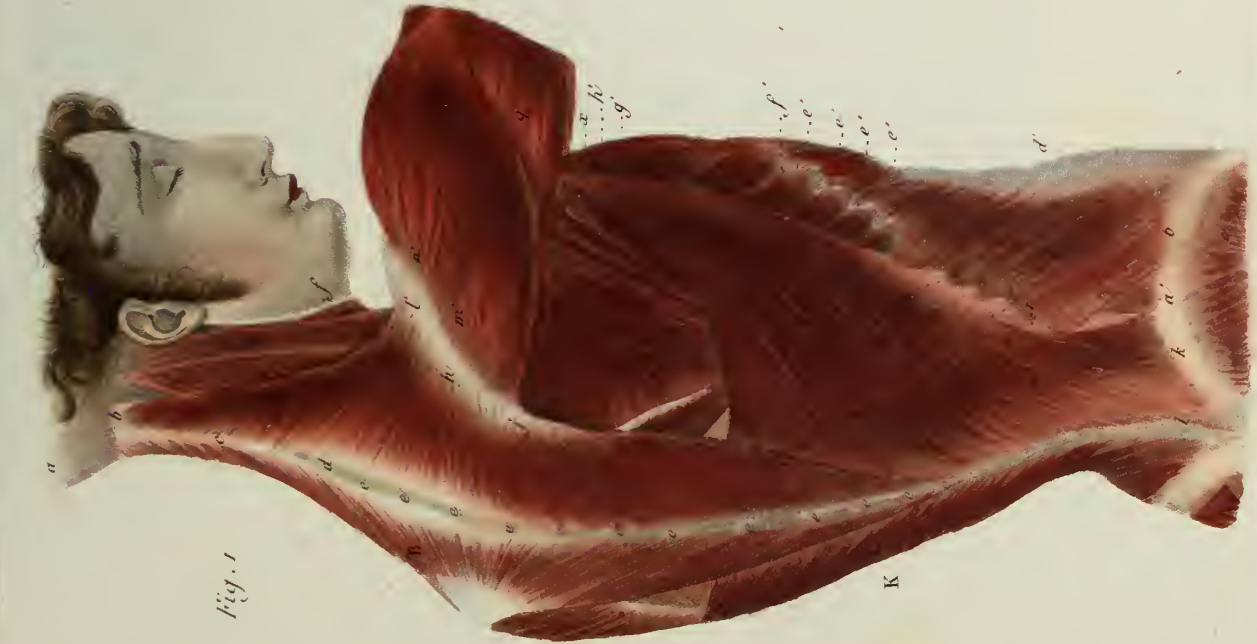


Fig. 1



Fig. 2

MUSCLES DU DOS.

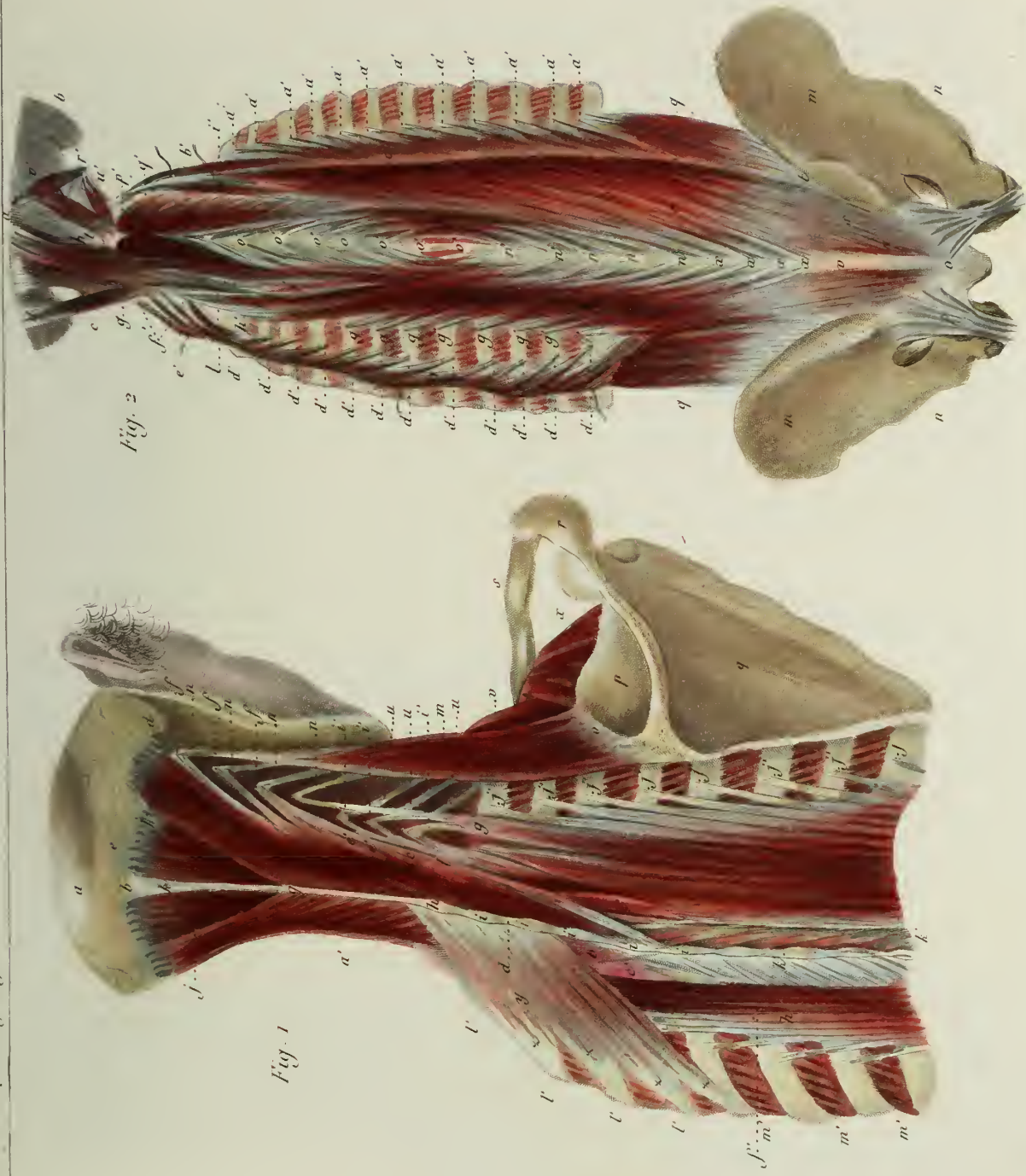
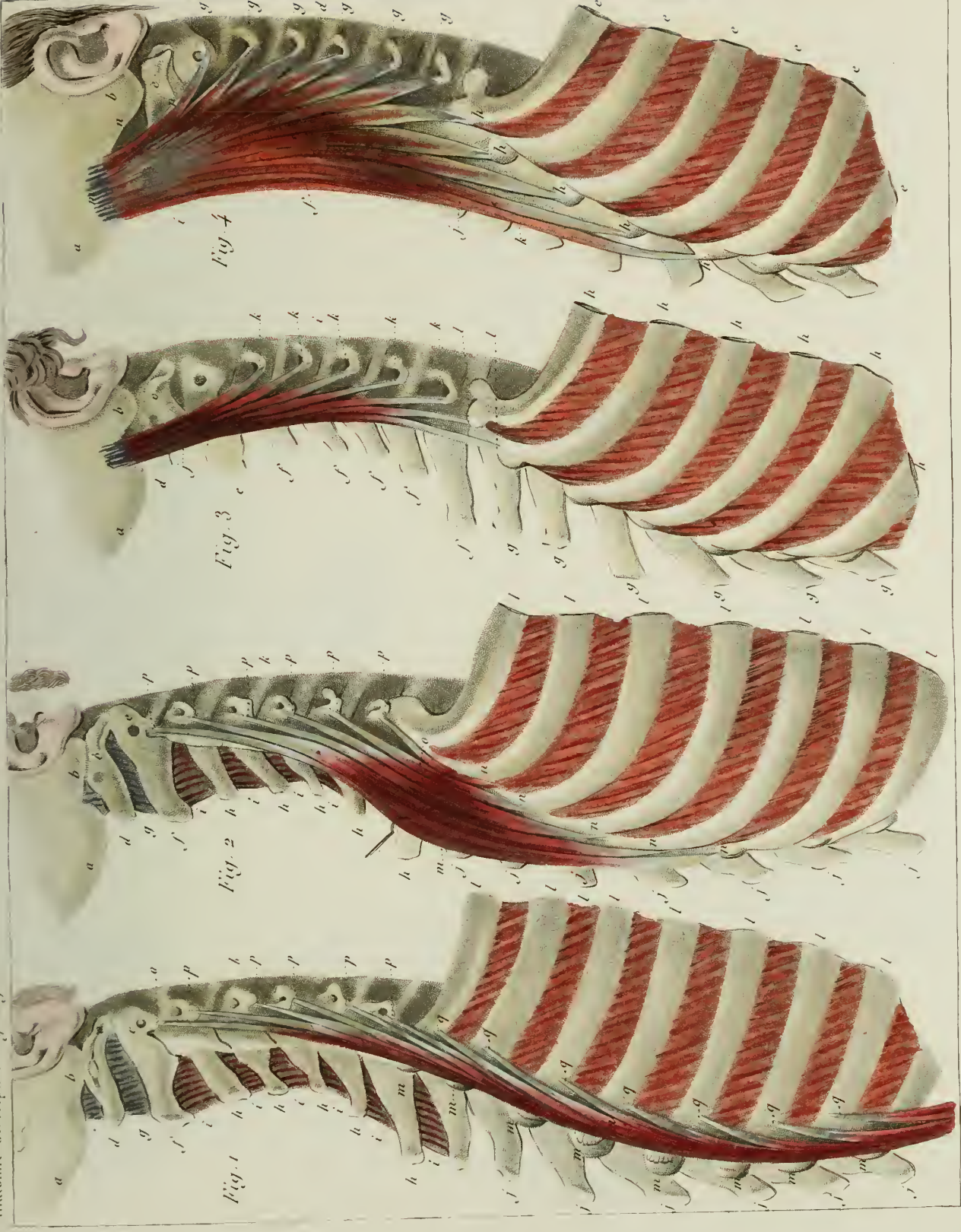
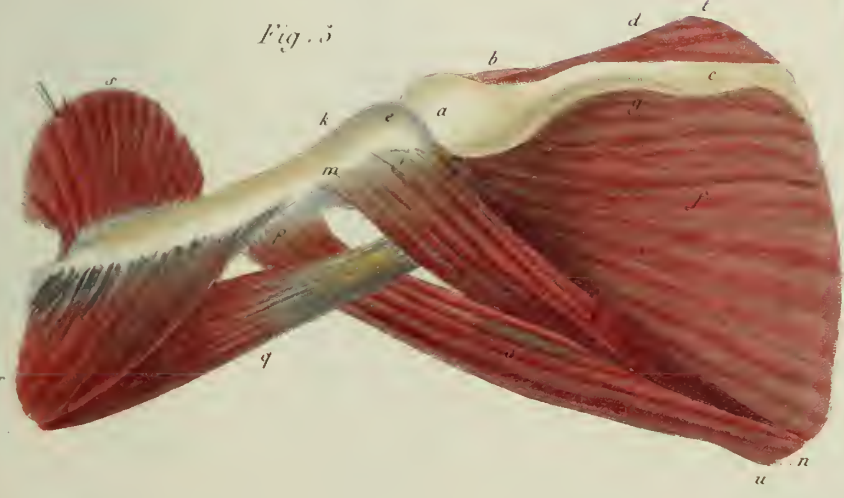
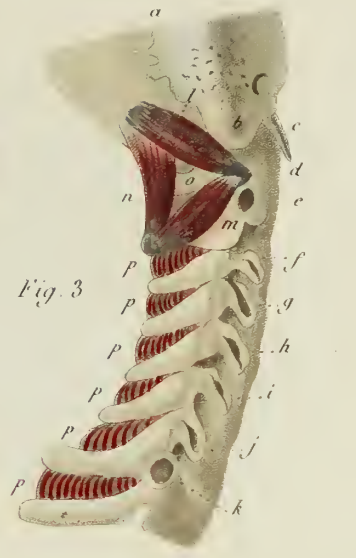
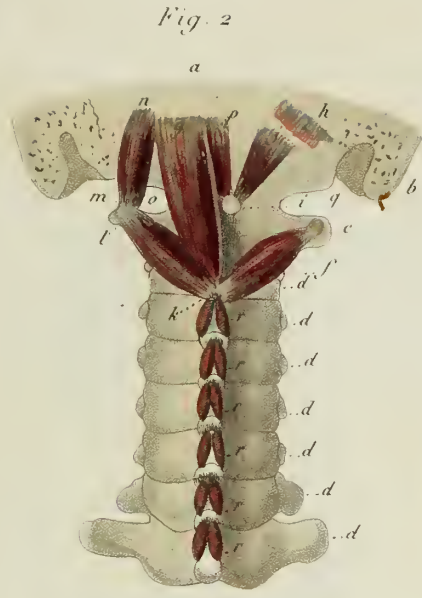
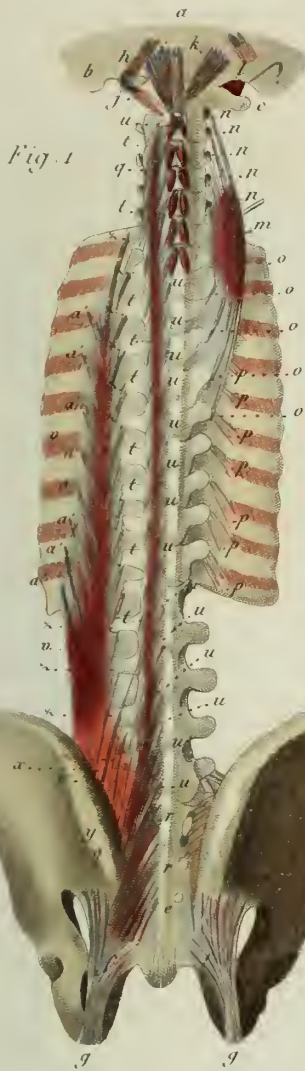


Fig. 2

Fig. 1

MUSCLES DU DOS ET DE LA PARTIE POSTÉRIEURE DU COU.





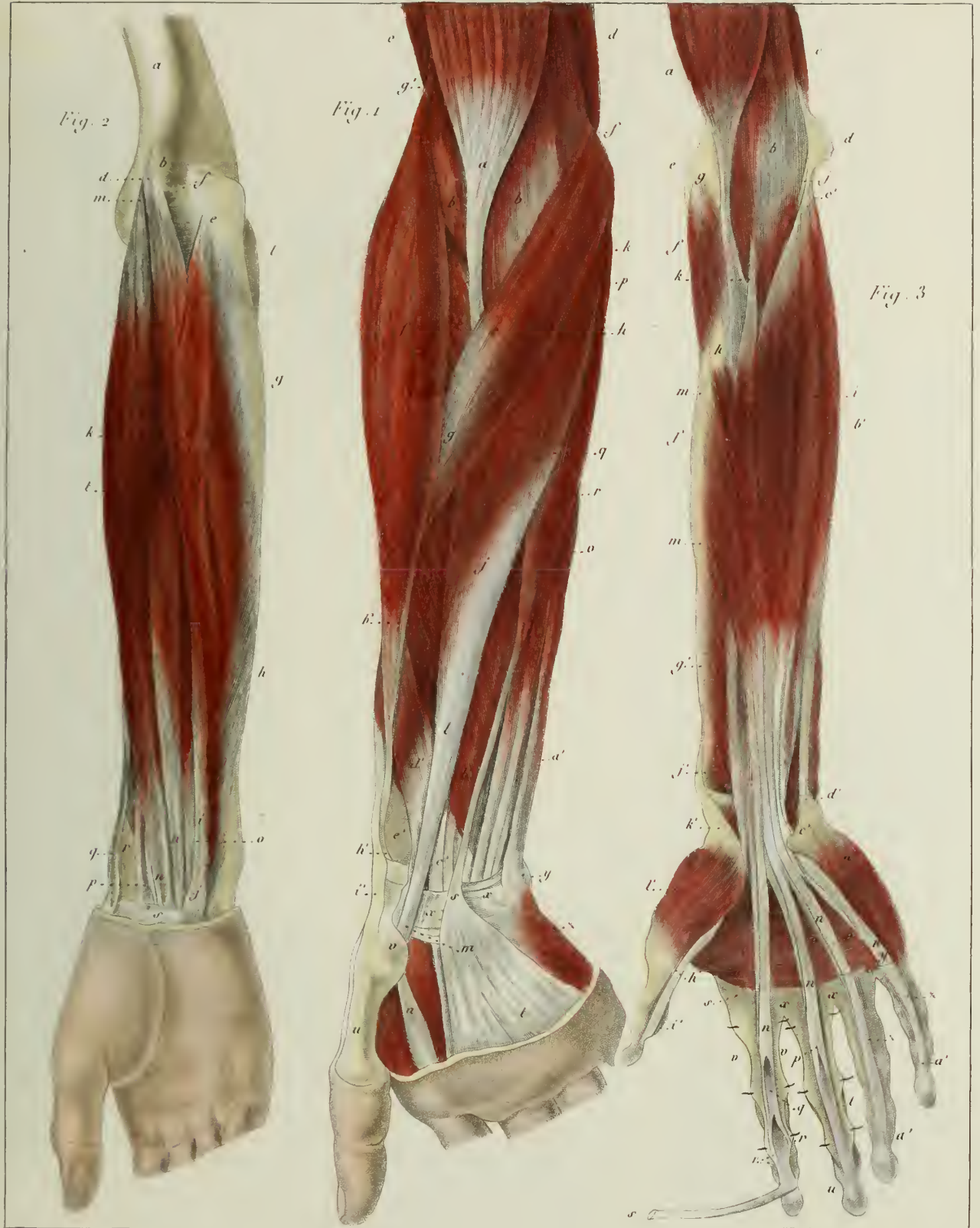
P. Duménil Del.

MUSCLES DU DOS ET DE L'ÉPAULE.



P. Duménil Dir!

MUSCLES DE L'ÉPAULE ET DU BRAS.



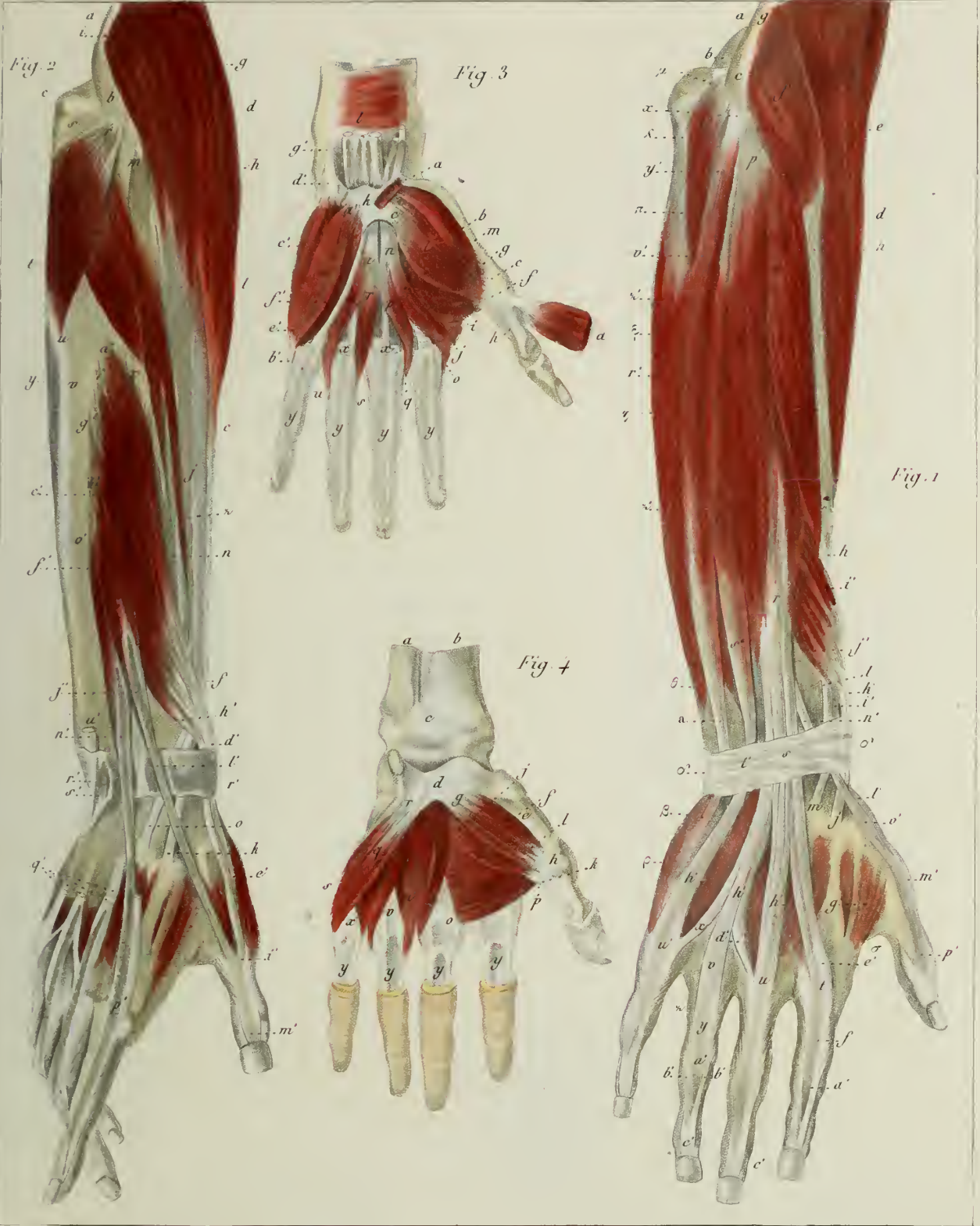
P. Dumenil Dir^t

MUSCLES DE LA RÉGION ANTÉRIEURE DE L'AVANT BRAS.



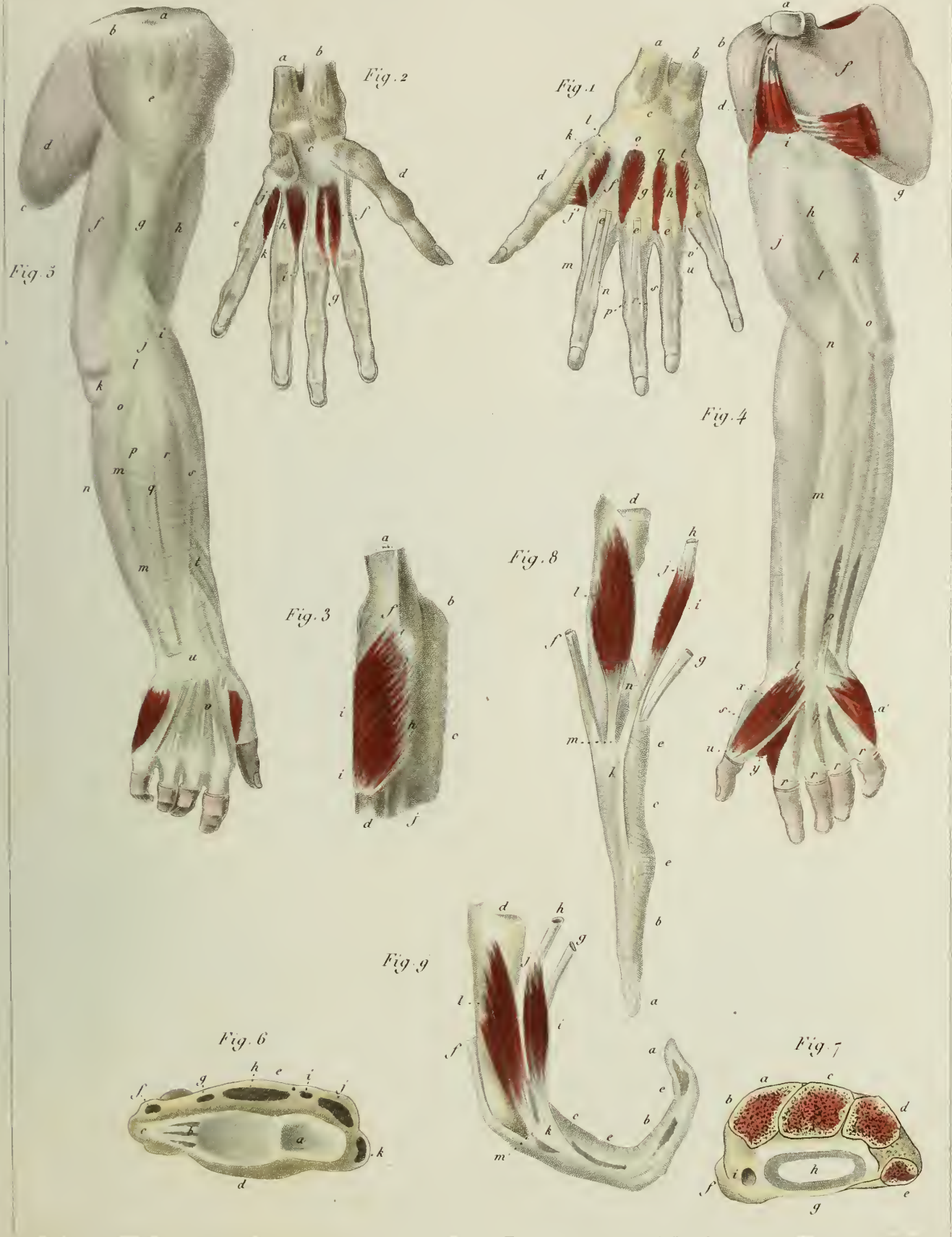
P. Duménil Dir.

MUSCLES DE L'AVANT BRAS ET DE LA MAIN.



P. Dumeuil Dir.

MUSCLES DE L'AVANT BRAS ET DE LA MAIN.



P. Dumont Dir!

APONEVROSE D'ENVELOPPE DU MEMBRE SUPERIEUR.

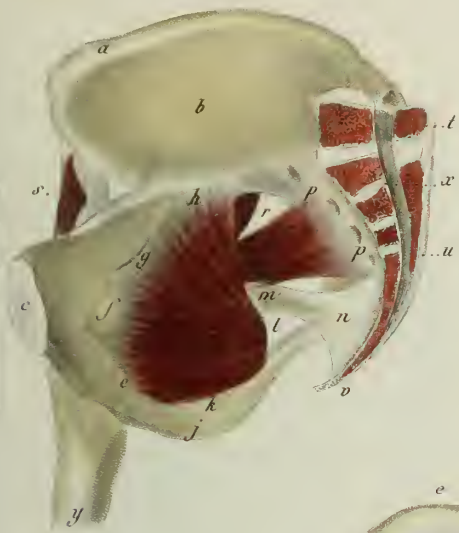


Fig. 3



Fig. 4



Fig. 1



Fig. 5



Fig. 2

P. Duménil Dir.

MUSCLES DES RÉGIONS FESSIÈRES.



P. Doucend. Del.

MUSCLES DE LA CUISSE.

Fig. 1

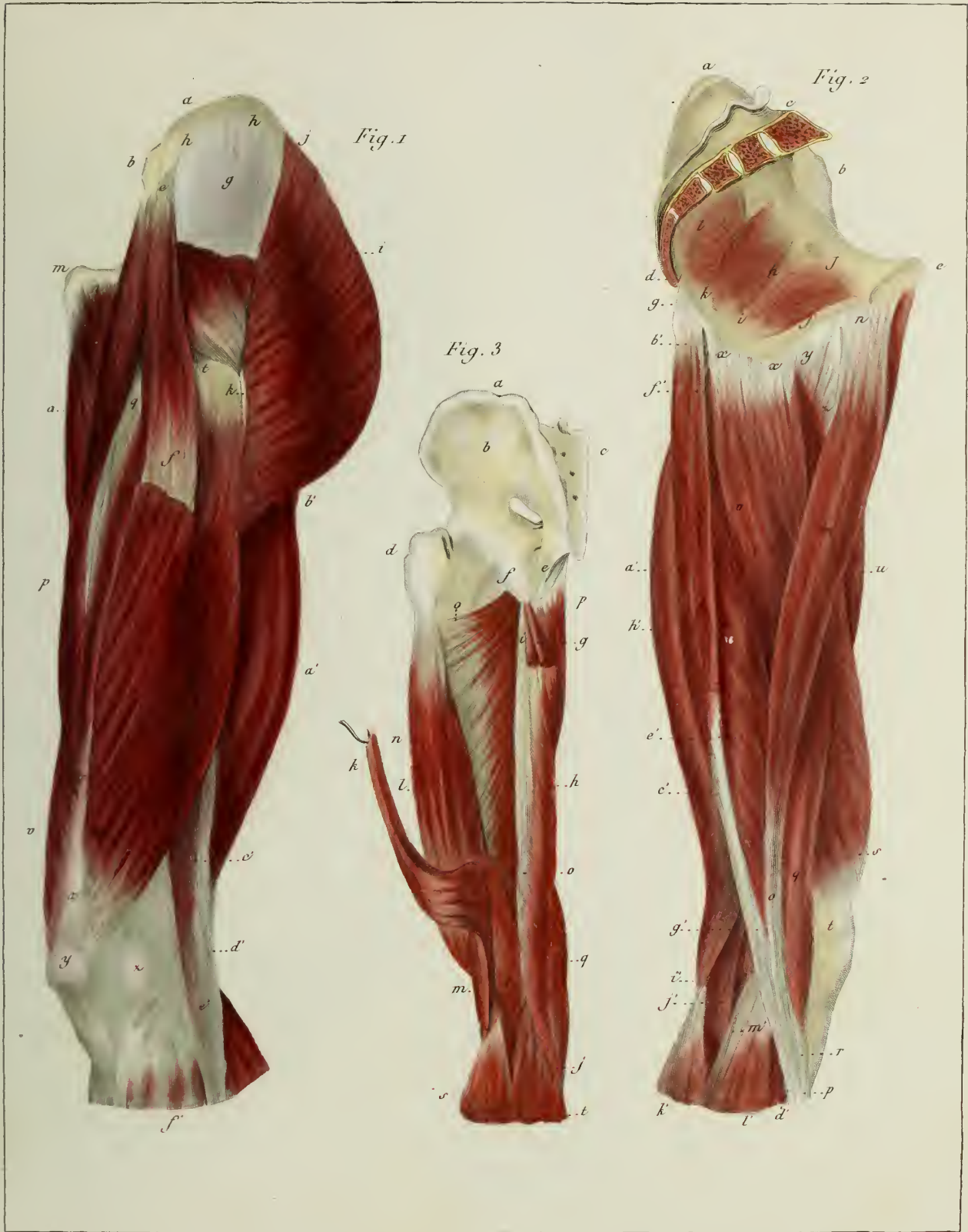


Fig. 2



Fig. 3





P. Dumenil Dir.

MUSCLES DE LA CUISSE.



Fig. 1

Fig. 2

Fig. 3

P. Duménil Dir.

MUSCLES DE LA JAMBE.



P. Dumenil Dir.

MUSCLES DE LA JAMBE.

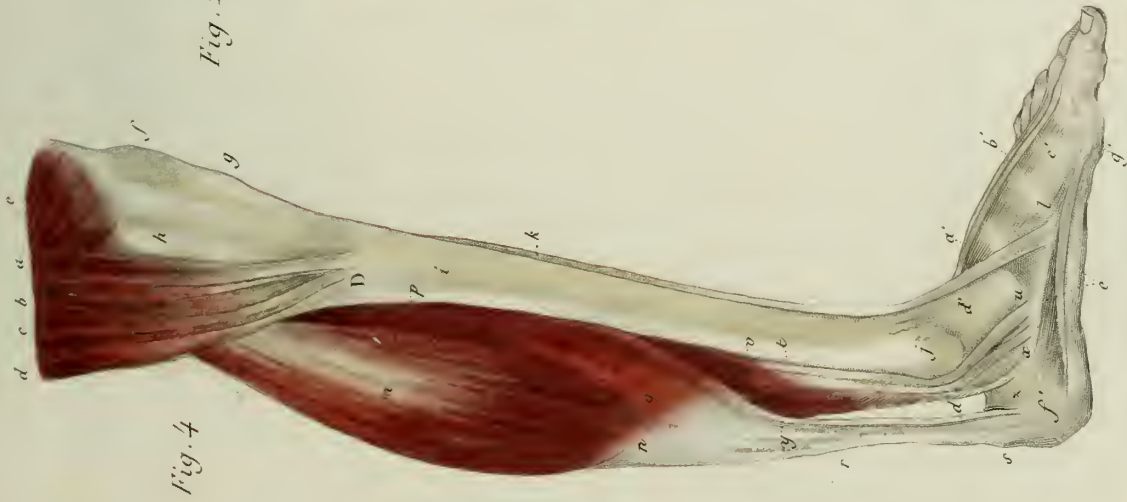


Fig. 4



Fig. 1

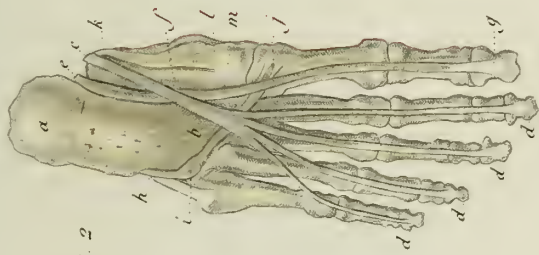


Fig. 2



Fig. 3

Fig. 1

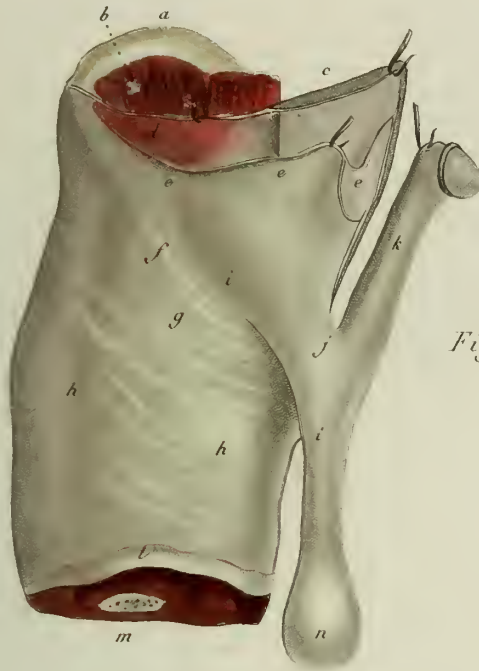


Fig. 2

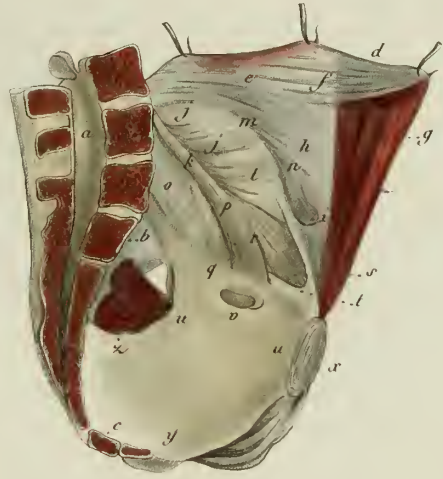
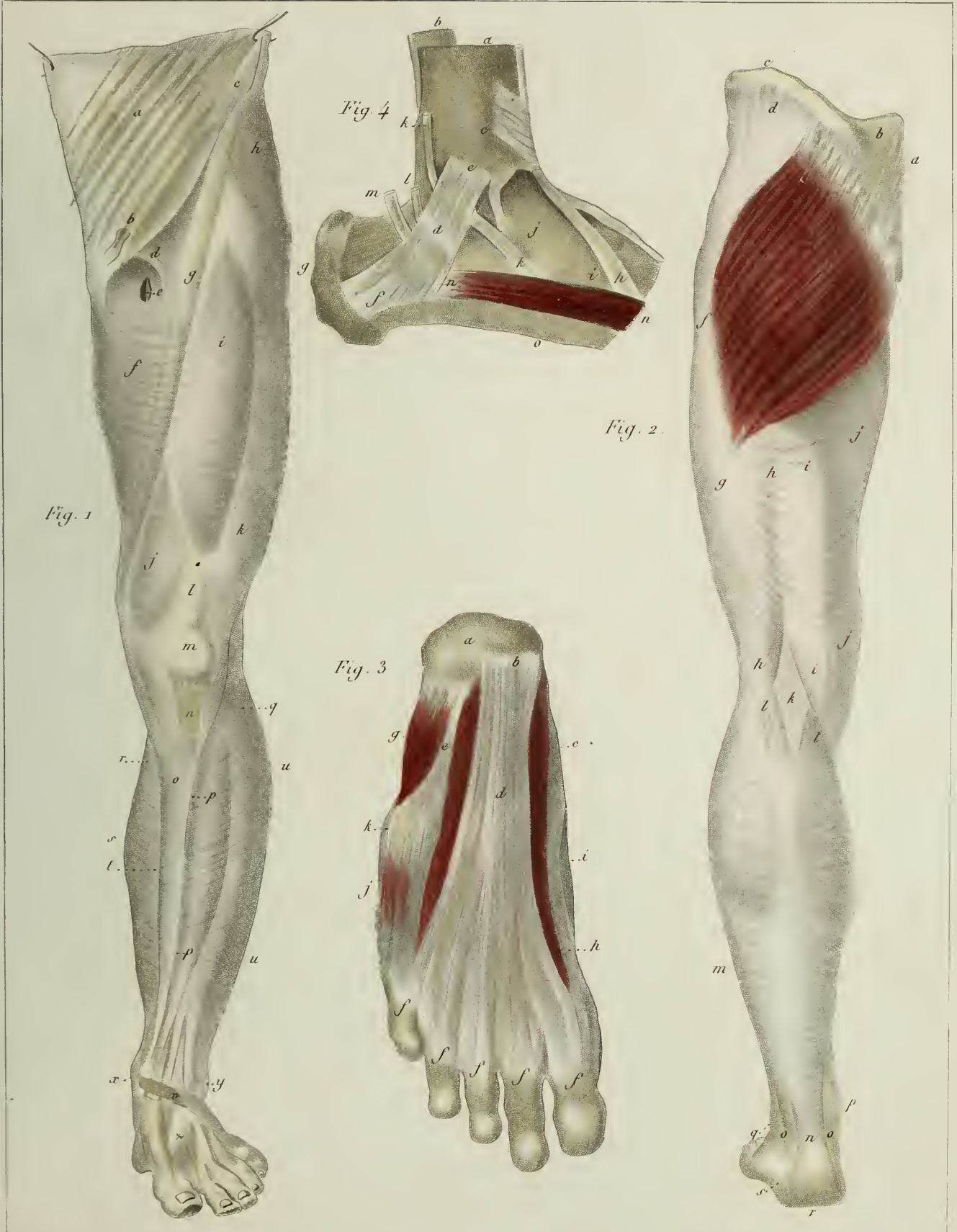


Fig. 3



Fig. 4





P. Duménil Dir^t

APONÉVROSES D'ENVELOPPE DU MEMBRE INFÉRIEUR.





