

*ATLAS*  
TO ILLUSTRATE THE  
**T R A V E L S**

THE GOVERNMENT OF FRANCE,  
DURING THE FIRST SIX YEARS OF THE REPUBLIC;

BY

G. A. OLIVIER,

MEMBER OF THE NATIONAL INSTITUTE, OF THE SOCIETY OF AGRICULTURE  
OF THE DEPARTMENT OF THE SEINE, &c. &c.

---

SECOND EDITION.

---

LONDON.

PRINTED FOR T. N. LONGMAN AND O. REES, PATERNOSTER-ROW; AND T. CADELL, JUN. AND W. DAVIES, STRAND.

1802.



---

# EXPLANATION OF THE PLATES.

---

(FIRST DELIVERY.)

## TRAVELS IN THE OTTOMAN EMPIRE.

**PLATE I.** General Map of the west part of ASIA MINOR or NATOLIA, of the PROPONTIS or Sea of MARMORA, of all the ARCHIPELAGO, of the Island of CERTE, of the MORRA, of GREECE, of EPIRUS, and of a part of ALBANIA and of MACEDONIA.

It is constructed from that of ANACHARSIS, published by Citizen BARBIE DU BOCAË, from the chart of GREECE of M. DE CHOISEUL, and from that of the CYCLADES, procured from the *Dépôt de la Marine*. I made, on the spot, the corrections and alterations which observation pointed out to me.

**PLATE II.** BOSPHORUS of THRACE or Channel of the BLACK SEA, with an indication of the nature of the soil which is met with on its shores.

This chart was constructed from the plans drawn by order of M. DE CHOISEUL. The part from BUYUK-DERE to the BLACK SEA, was rectified from the observations of Citizen MONNIER, engineer.

**PLATE III.** Plan of the head of the Gulf of MUNDANIA, copied from that drawn on the spot, by Citizen TOUSSAINT, naval architect.

**PLATE IV.** HELLESPONT or Channel of the DARDANELLES.

This chart was drawn on the spot, from observation, and from a manuscript chart which was in the hands of the captain of a Venetian vessel.

**PLATE V.** Map of TROAS and of all the course of the SIMOIS, from its source at Mount COTYLUS to its mouth half a league from Cape SIGBUM.

It was constructed from a manuscript map drawn by M. KAUFFER, a French engineer, at present in the service of the Ottoman PORTE. I have made a few trifling alterations in the parts which I visited and examined.

## EXPLANATION OF THE PLATES.

**PLATE VI.** Plan of the Islands of **MILO**, **ARGENTIERA**, and **POLINO**, drawn on the spot and from the observations of **M. DE CHABERT**, ex-director of the *Département de la Marine*.

**PLATE VII.** Plan of the Island of **THERA** or **SANTORIN**, drawn on the spot. The soundings were taken by the captain of a French frigate, and were communicated to me by the principal inhabitants of the island.

**PLATE VIII.** Gulf of **SUDA**, in the Island of **CANDIA**. Plan drawn from that in manuscript which was constructed in 1738, by **LEROI**, engineer of the Navy.

**OBSERVATION.** The good anchorage of this road is in eighteen fathoms muddy bottom, the old Island of **SUDA**, bearing north-east or north north-east. The anchorage of **LA CLUATE** is in twelve or thirteen fathoms bottom of grafs and shells, bringing the point of the fort and **Cape CALAPEDE** in one with each other.

**PLATE IX.** It represents a **TURKISH BURYING-GROUND**, planted with cypresses, and a religious scene before a tomb more remarkable than the rest.

**PLATE X.** It represents two women of **SCIO**, with their ordinary costume or dress, except that they wear, when full dressed only, the two sleeves of silk and gold stuff which is seen on them.

**PLATE XI.** It represents two women of **ARGENTIERA**, with their ordinary dress; one of them is spinning cotton with a distaff, although the women of that island generally make use of a wheel.

**PLATE XII.** Branch of the **HAIKY-CUPPED OAK**, with two acorns. Its wood is employed, throughout the **LEVANT**, in ship-building and in the frame-work of houses.

**PLATE XIII.** Branch of the **VELANI OAK**, with its large cup and its acorn. This cup, known in trade under the name of *velanida*, is employed in dyeing and tanning.

**PLATE XIV.** Branch of the oak which produces the *gammal* and *gammal*, with two acorns and two galls. It is taken from a young and very vigorous stem.

**PLATE XV.** Branch of the *same oak*, with its fruit: on it are seen three galls used in trade, *a, a, a*, and, above, the diplolepis which produces this gall, *c, c*. One of them is of the natural size, and the other is magnified. On the same oak, is a spongy red gall covered with a resinous coat, *b*; underneath is represented the diplolepis which produces it, *d, d*. The one is magnified, and the other is of the natural size.

---

\* This Plate requiring particular care in the execution, is not yet finished, it will be delivered with others which refer to the *TRAVELS IN EGYPT*.



## EXPLANATION OF THE PLATES.

**PLATE XVI. REPTILES OF THE ARCHIPELAGO.** Figure 1, represents the ocellated scink, which is met with in CRETE, in CYPRUS, and in EGYPT. It is of the natural size. Figure 2, represents a Boa of the natural size, found at POLINO, and NAXOS: A shews it on its belly, and B on its back.

### PLATE XVII. LAND-SHELLS.

*Fig. 1. a, and fig. 1. b.* Chestnut snail, *Helix castanea*, which is eaten by the Greeks of CONSTANTINOPLE and GHEMLEK.

*Fig. 2. a, b.* Blunt Bulimus, *Bulimus retusus* of CRETE; the one is magnified, and the other is of the natural size.

*Fig. 3. a, b.* Inflated Bulimus, *Bulimus inflatus*; the one is magnified, and the other is of the natural size.

*Fig. 4. a, b.* Twisted-necked Bulimus, *Bulimus torticollis* of CRETE; the one is magnified, and the other is of the natural size.

*Fig. 5.* Fasciolated Bulimus, *Bulimus fasciolatus* of CRETE; natural size.

*Fig. 6. a, b.* Taper Bulimus, *Bulimus teres* of CRETE; the one is magnified, and the other is of the natural size.

*Fig. 7. a, b, c.* Flat-spined Helix, *Helix spiriplana* of CRETE; natural size.

*Fig. 8.* Whelk-like Melania; *Melania buccinoidea* of SCIO; natural size.

*Fig. 9. a, b.* Denticulated Bulimus, *Bulimus denticulatus* of SCIO; the one is magnified, and the other is of the natural size.

*Fig. 10, a, b.* Zebra Bulimus, *Bulimus zebra* of GHEMLEK; the one is magnified, and the other is of the natural size.

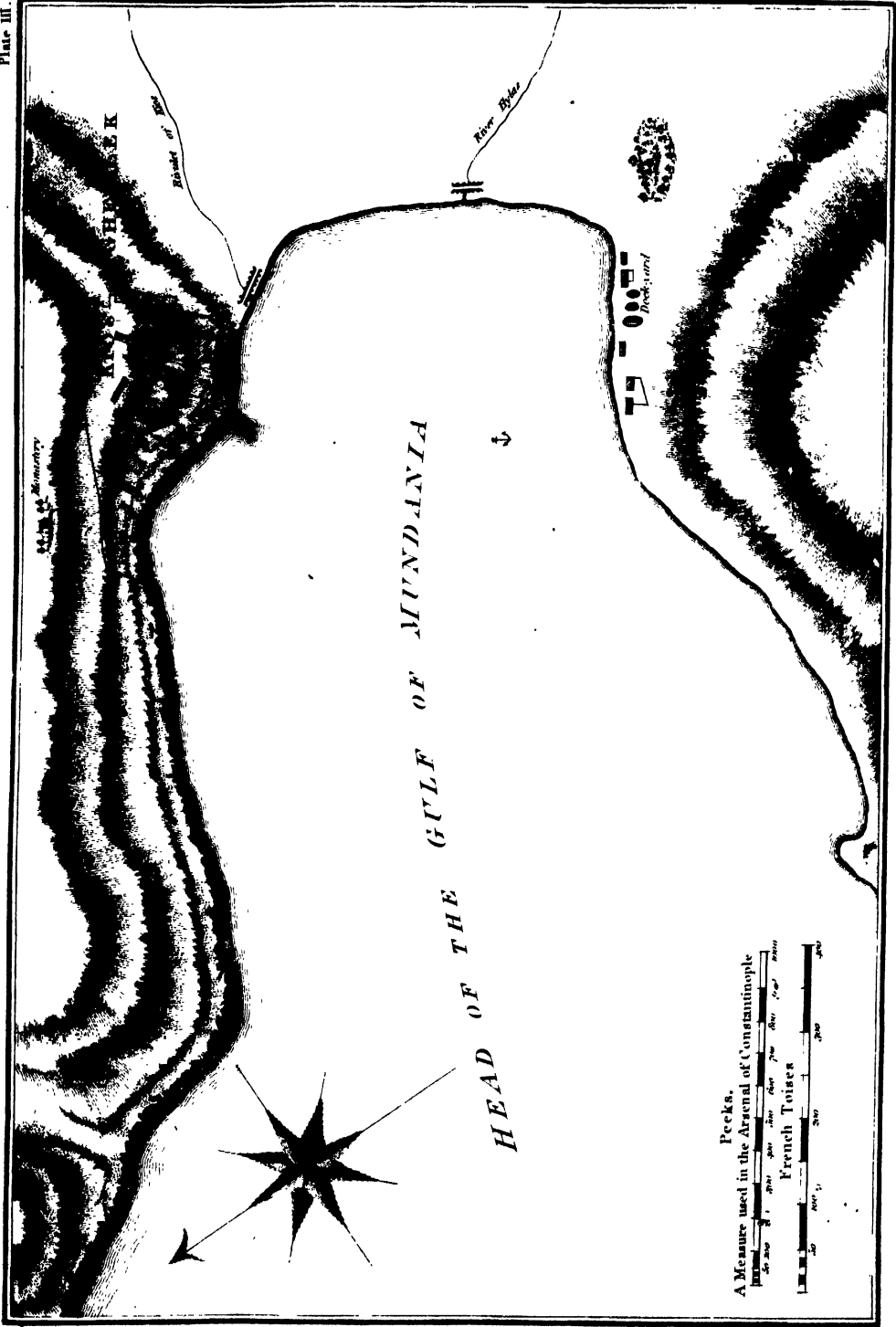
*Fig. 11. a; fig. 11. b.* Oriental Planorbis, *Planorbis orientalis* of SCIO; natural size.

*Fig. 12. a; fig. 12. b.* Oval Bulimus, *Bulimus ovalaris*; the one is magnified, and the other is of the natural size.









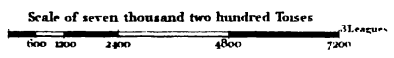
Published Sep 10<sup>th</sup> 1800, by Longman & Beer, Peter-aster Row.



# MAP OF TROAS

## AND OF THE COURSE OF THE SIMOIS MOUNTAINS

From its Source to its Mouth.

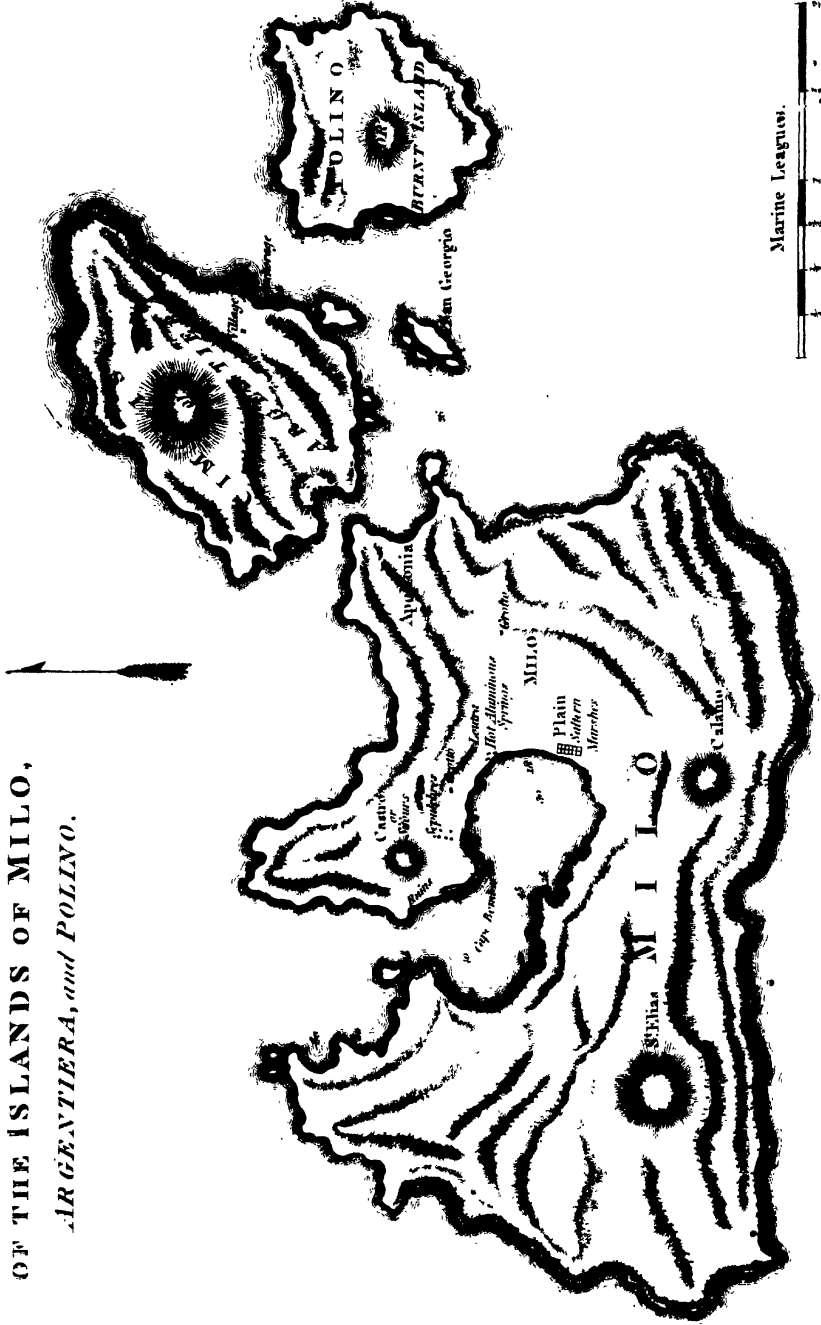


Cotylus or M'Gargara  
 Elevation 775 Toises  
 2000 Feet above the Sea

Original in the possession of the British Museum

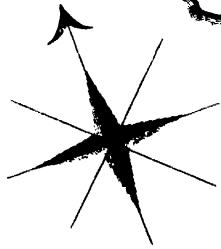


PLAN  
OF THE ISLANDS OF MILO,  
*ARGENTIERA, and POLINO.*

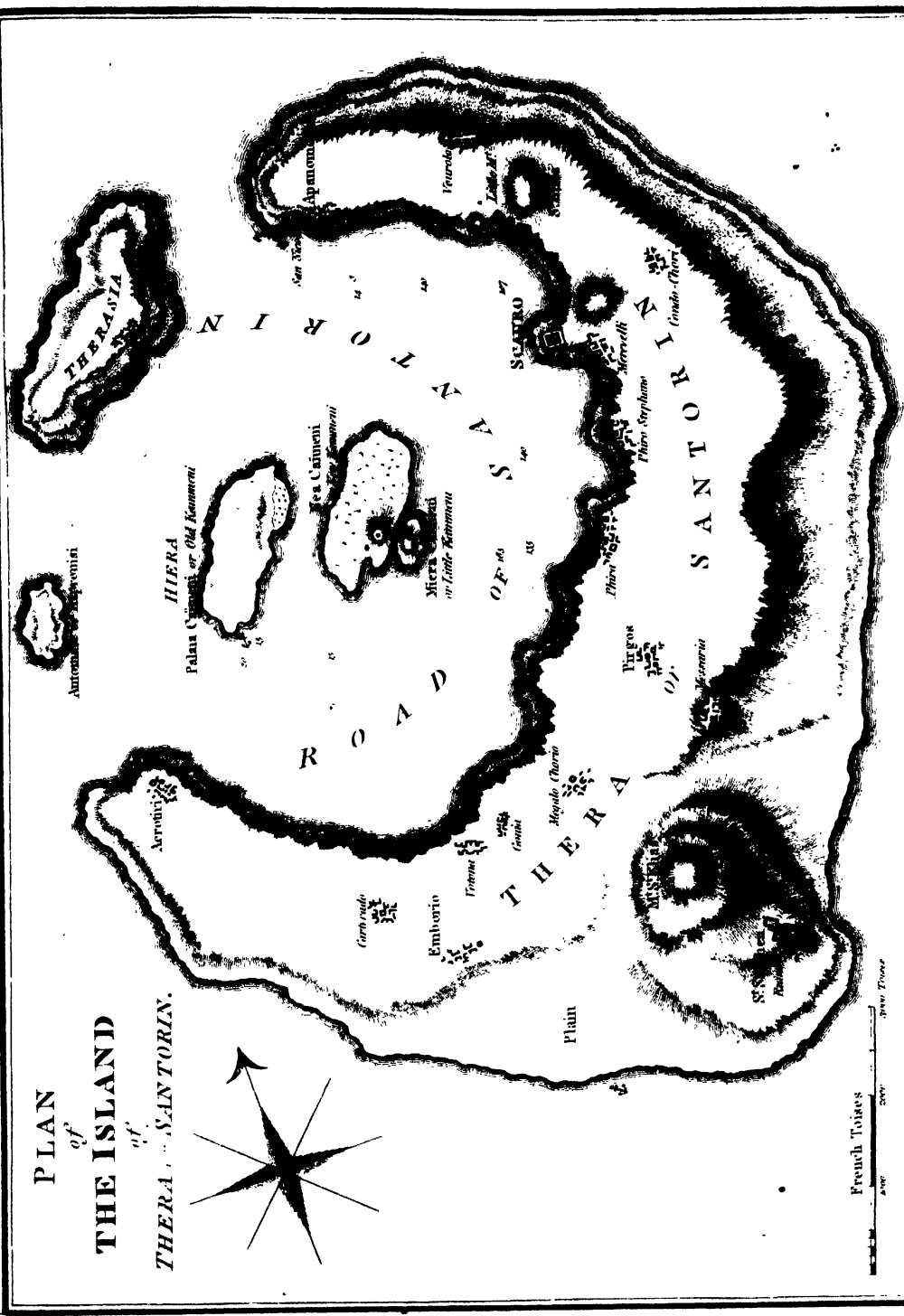




**PLAN**  
*of*  
**THE ISLAND**  
*of*  
**THERA, in the ISLANDS OF SANTORIN.**



French Toises  
 200  
 400  
 600  
 800  
 1000  
 1200  
 1400  
 1600  
 1800  
 2000  
 2200  
 2400  
 2600  
 2800  
 3000  
 3200  
 3400  
 3600  
 3800  
 4000  
 4200  
 4400  
 4600  
 4800  
 5000

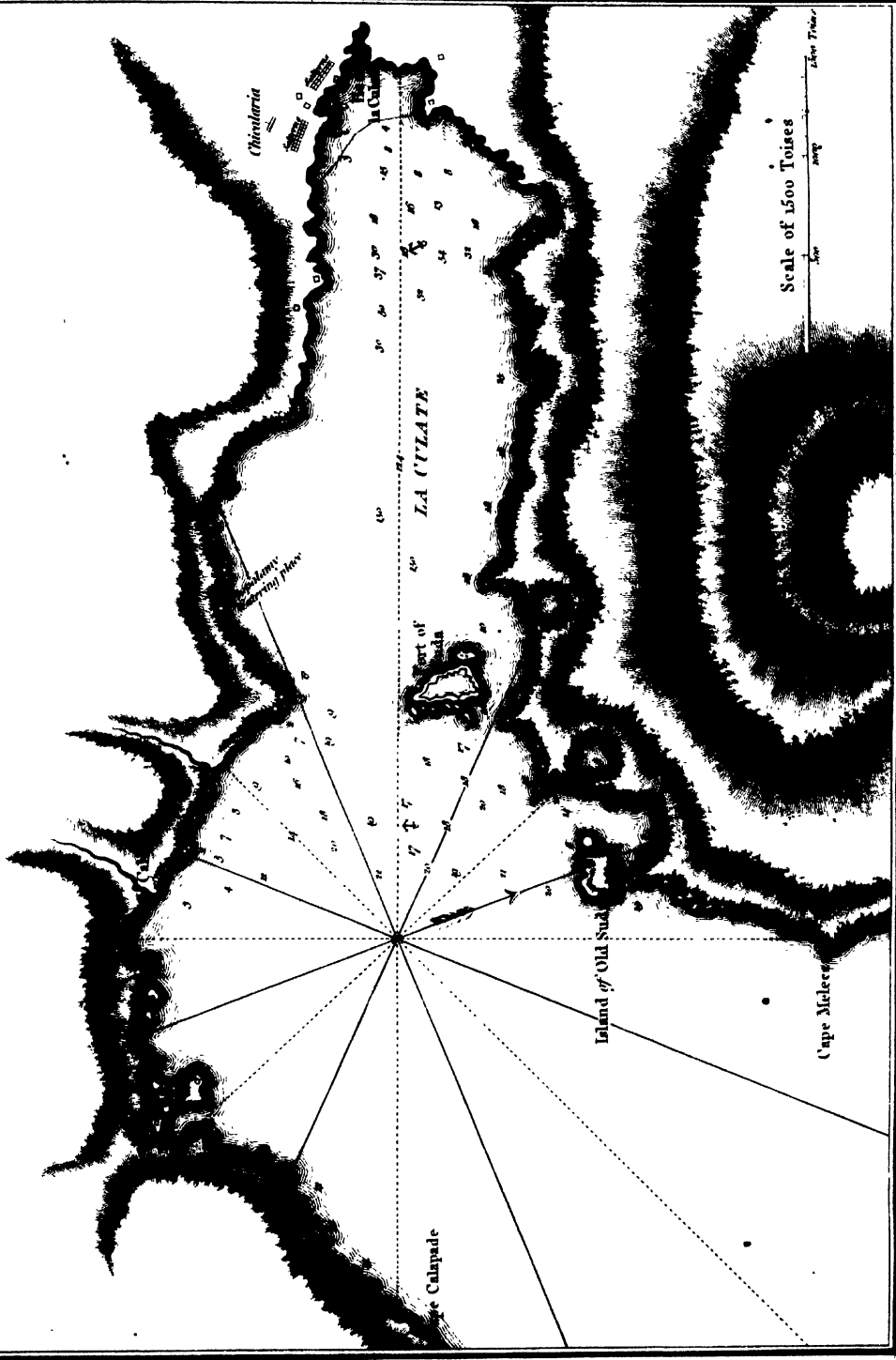


Published, by Order of the King, by Le Beau, at the Press of the King's Printer.

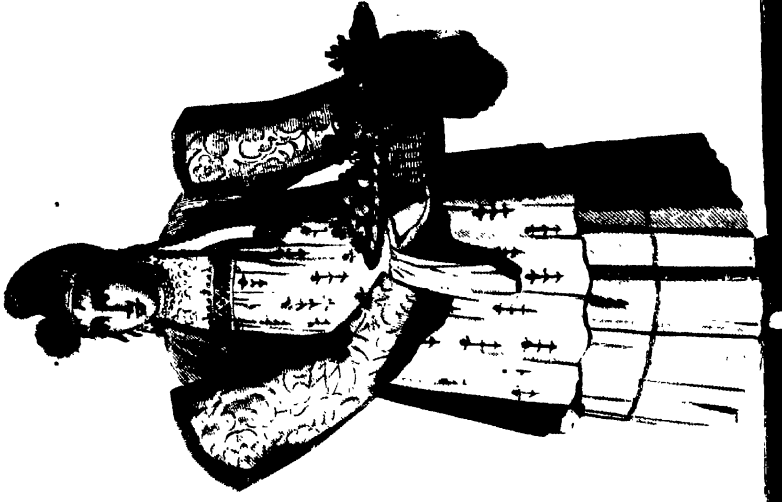




# GULF OF SUDA, IN THE ISLAND OF CANDIA.





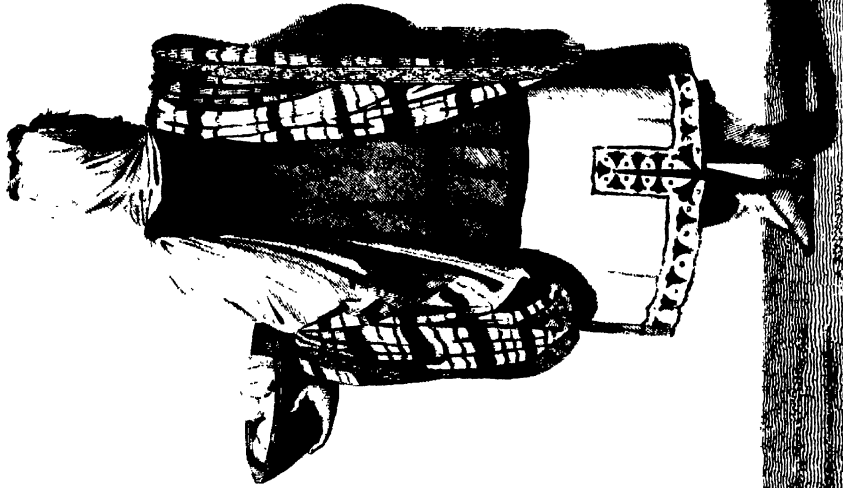


WOMEN OF SCIO.

*Wright sculp*

*Wright del.*





WOMEN OF ARGENTIERA.

W. H. W. del.

Nov. 18. 44





J. T. Roberts del.

J. Vasey sculp.

**HAIRY-CUPPED OAK.** - *QUERCUS COCCINEA*.







P. J. Redouté del.

W. Cocker sculp.

VELANI OAK. - *QUERCUS EGILOPS*





*P. J. Reichen del.*

**OAK** which produces the galls used in trade *QUERCUS INFECTORIA.*





*J. Bohner del.*

**DAK** which produces the gummy used in trade      *QUERCUS INFECTORIA.*



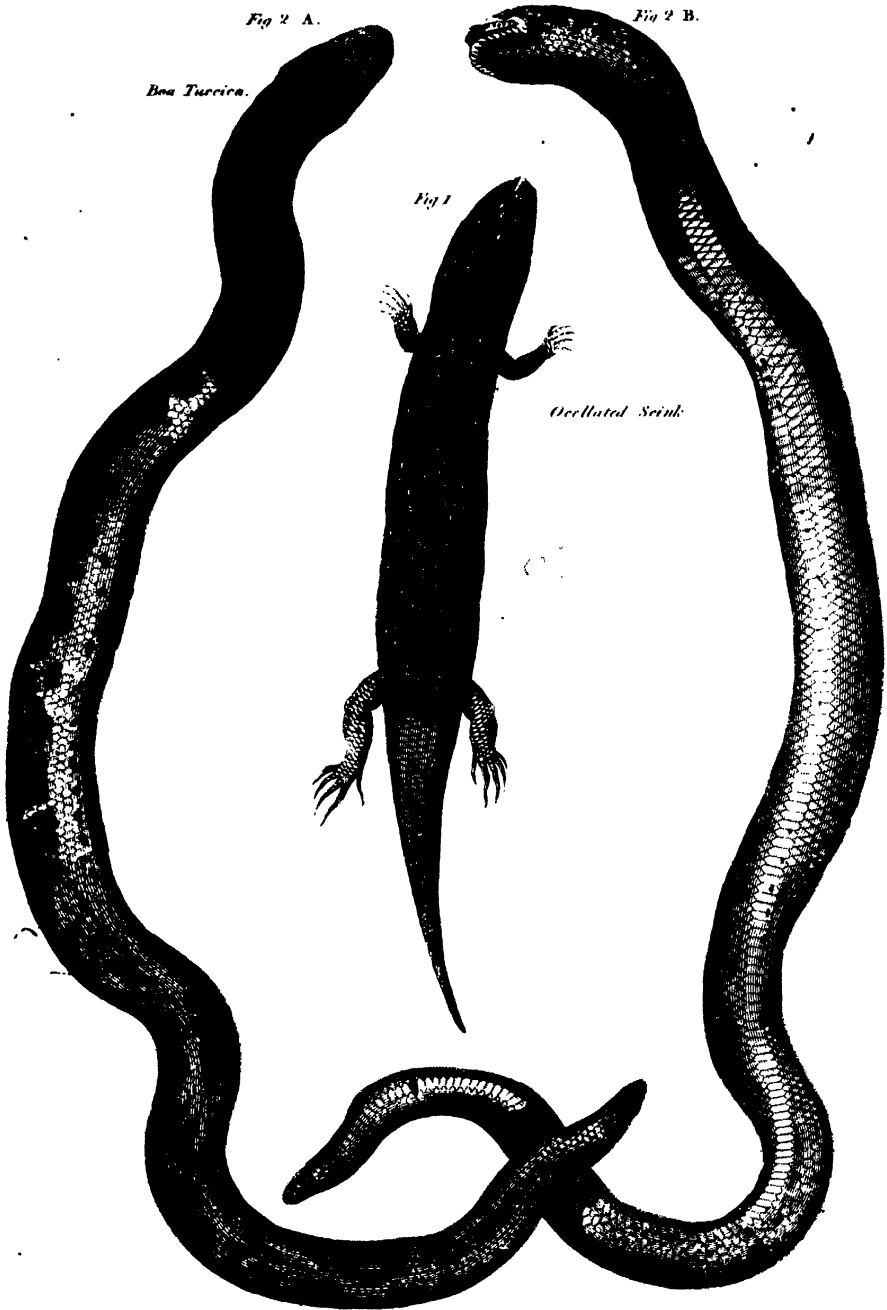
Fig 2 A.

Fig 2 B.

*Boa Turricea.*

Fig 1

*Ocellated Skink*



*Delaware del*

REPTILES OF THE ISLANDS OF THE ARCHIPELAGO.

100

















