

# **TRONISOFT POPYWIZARD INTERFACE KIT**

## **CONNECTING THE « CABLE/CONNECTOR » TO THE TRONISOFT 4207**

Idealy the order of operations will be :

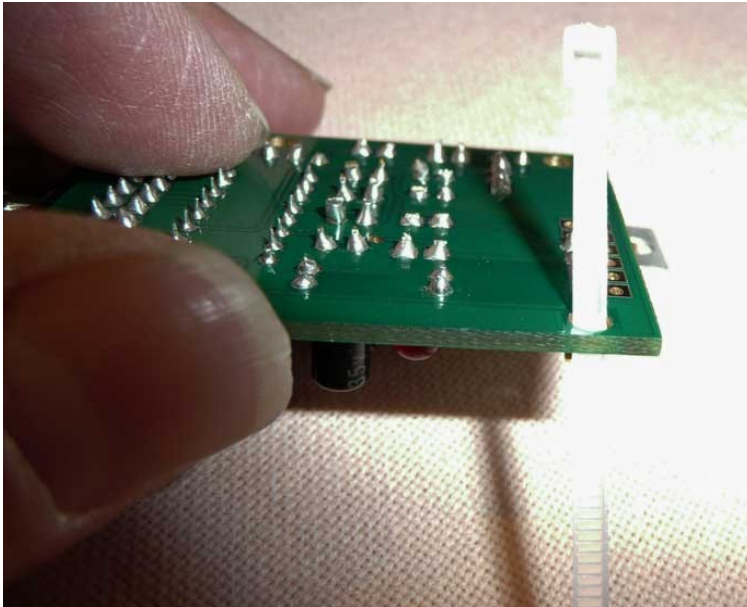
1. Fix the Cable/Connector on the board (use the Red part for fixing, don't bend this part where the 2 resistors are positionned)
2. Make the connections.

Lets go into details:

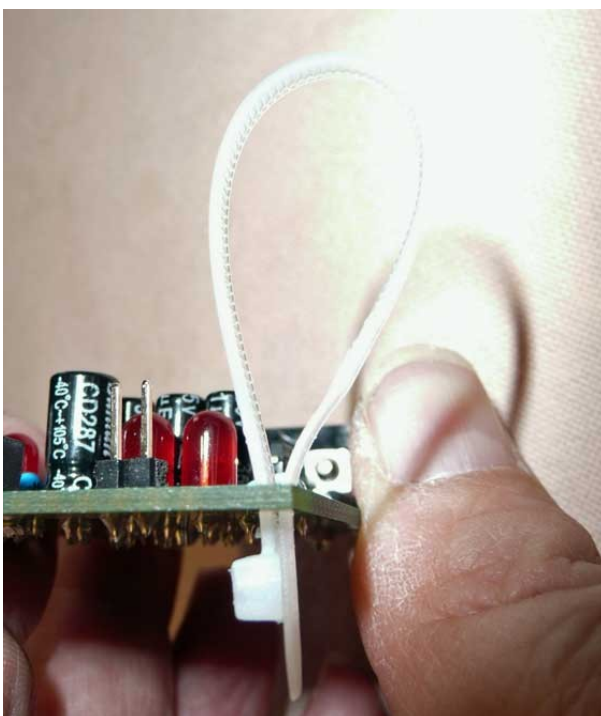
### **1. Fix the « Cable/Connector » on the board:**

Use the cable tie to fix the Cable/Connector on the board. Use the red part of the cable for fixing, don't bend this part where the 2 resistors are positionned.

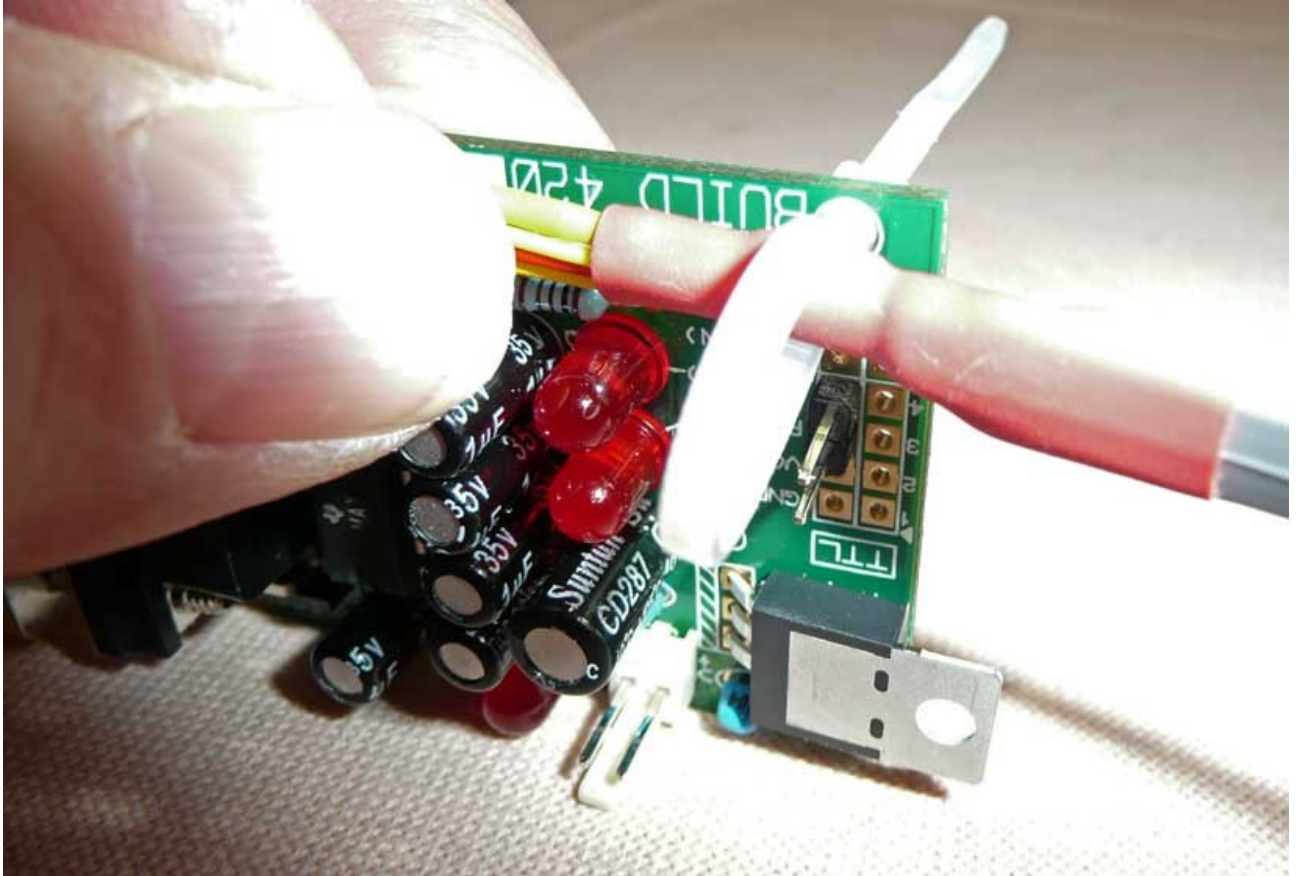
#### **1.1. Insert the cable tie into the hole of the board**



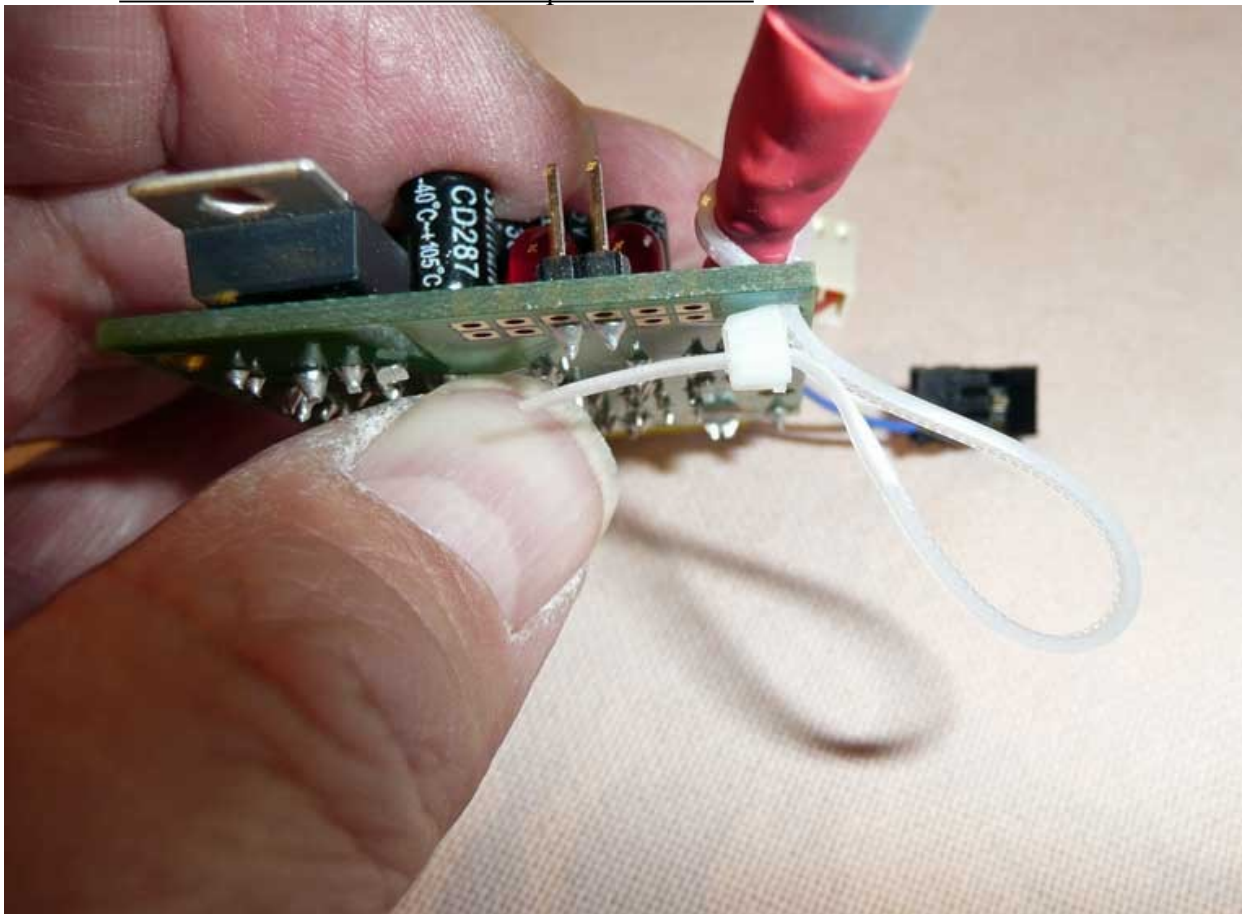
#### **1.2. Make a curl with the cable tie**



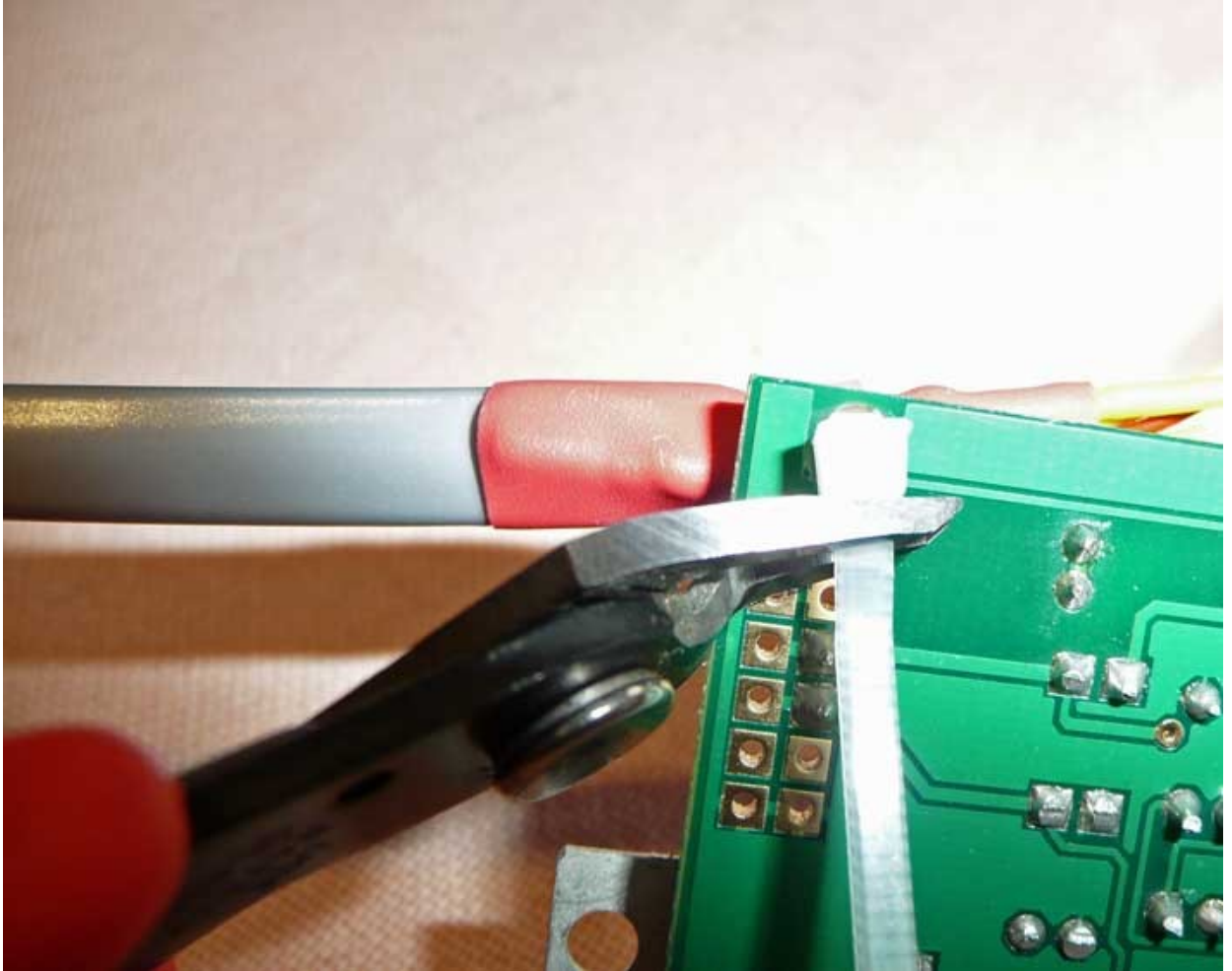
1.3. Insert the cable into the curl



1.4. Close the cable tie on the red part of the cable

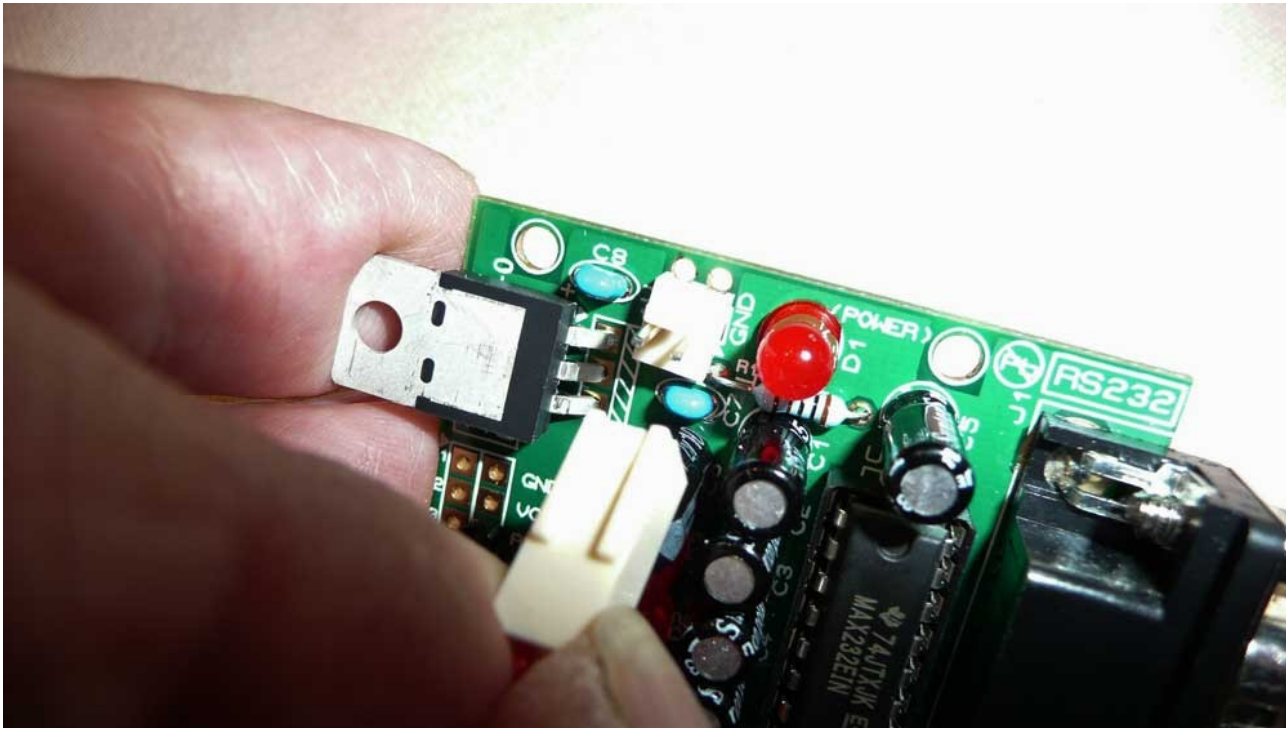


1.5. Cut the cable tie



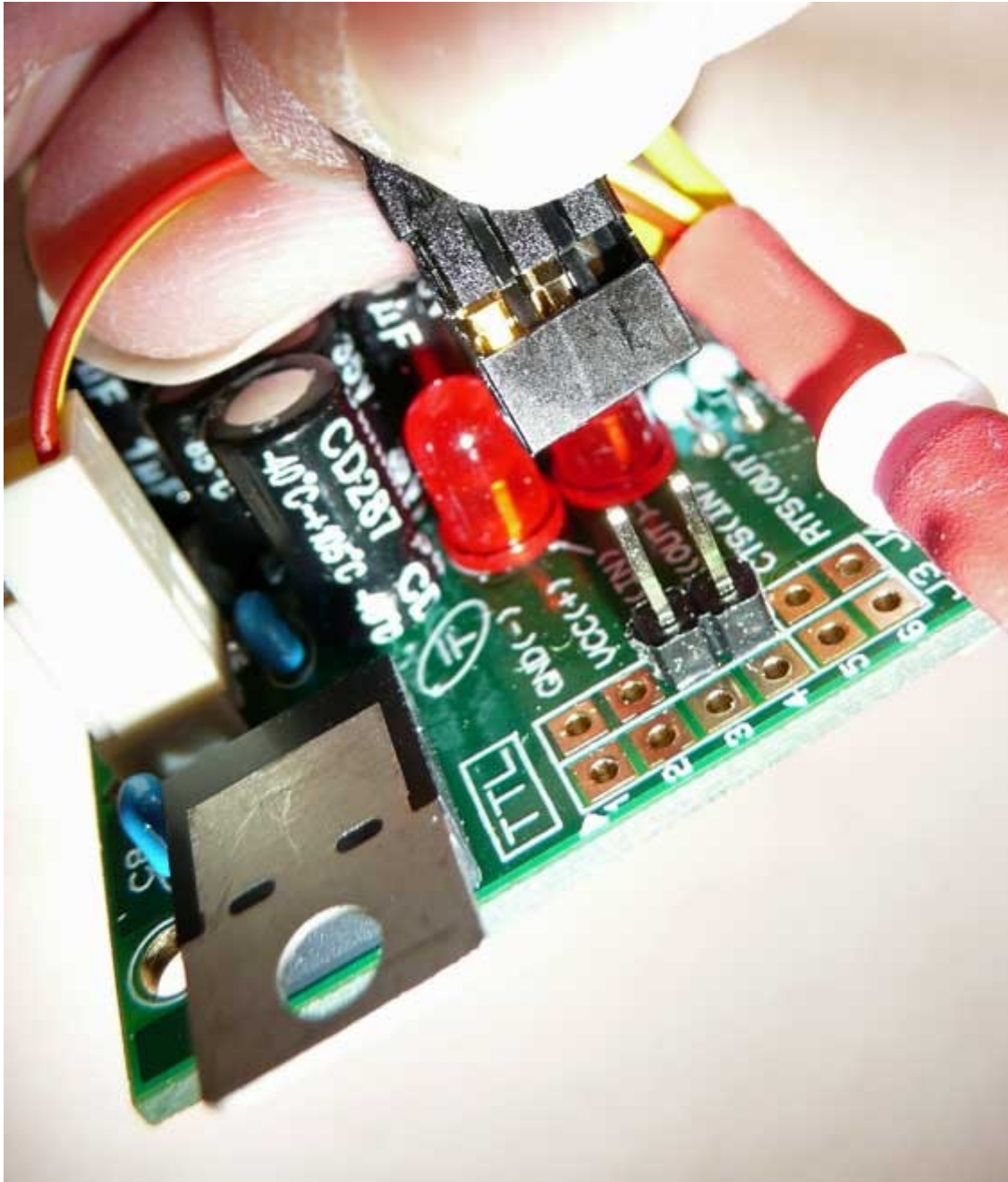
2. Make the connections.

2.1. Insert the power connector: The "polarised" connector (cream color) is the "Power connector" with Red and Yellow wires who are the power cables, You can't miss, only one position is permitted (for your information the RED is + "live" and the Yellow is Ground = "Common")





2.2. Insert the signal connector: The "Black" connector is the "Signal connector" and isn't polarised, this mean that the connection can be made both sides ...according your inspiration, but pay attention that the black connector is a "triple"connector and that one of the three connector is not used, this is of course the used connectors with White and Blue wires who should be plugged on the 2 pins !



**The end result :**

