

CAMP CABLE

Queensland, Australia
1942-44



Period: Training base for US Army 32nd "Red Arrow" Infantry Division 1942-44

Datum: WGS84
Contour Interval: 10 metres

Mapping based on:

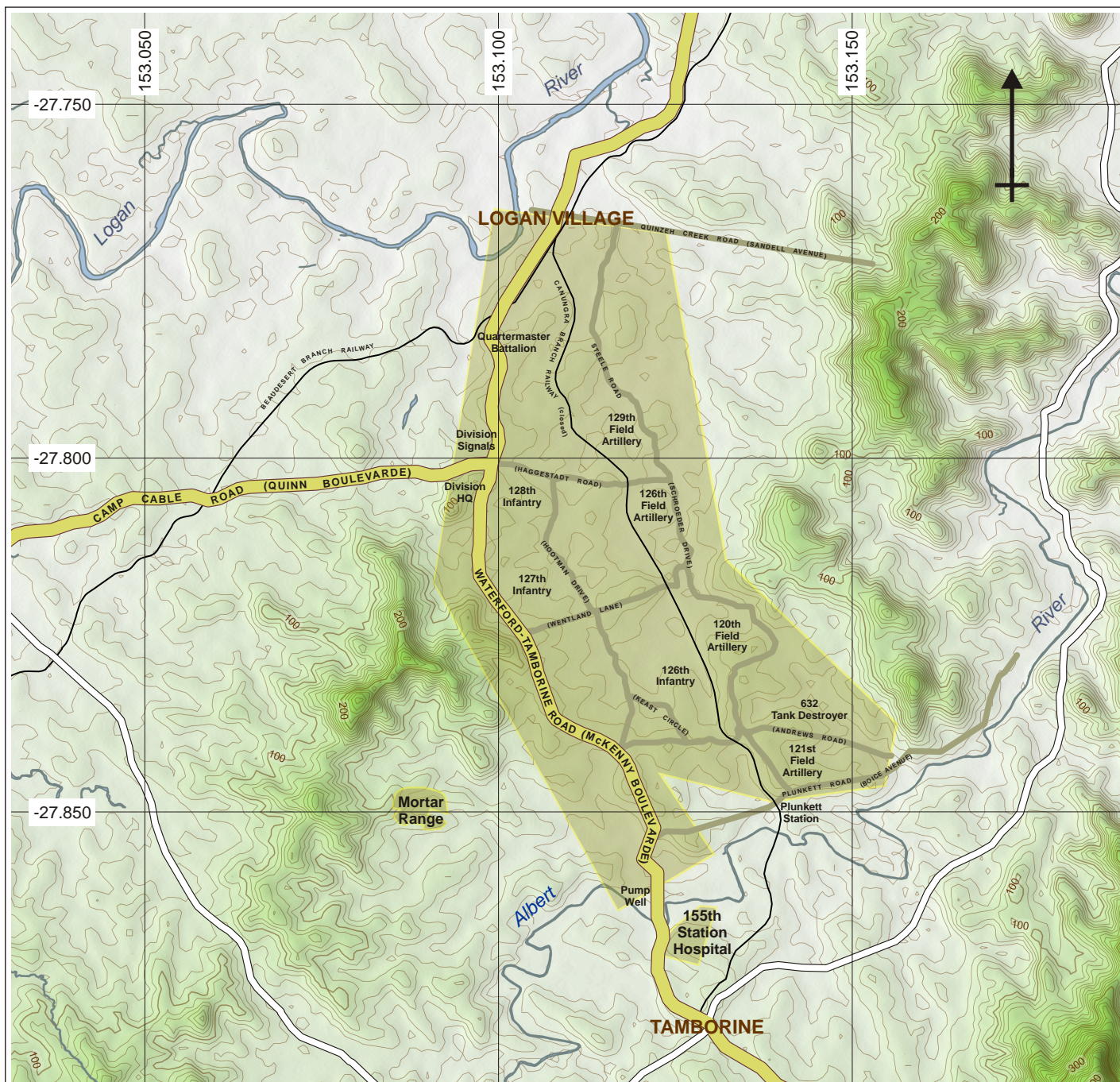
National Archives of Australia
NAA: BP378/1, FOLDER T FOLIO 76
Camp Cable area [plan number 1/7/296]

The State of Queensland
Department of Housing and Public Works
WWII Historic Places

Shuttle Radar Topography Mission (SRTM)

Compiled using: QGIS 2.2 and 3DEM 20.7

© Bootstrap Heritage



Drawn	Date	By	Rev.	Scale
	2014	MP	2.0	