

VMB-423

158  
①

Report # 218

109

6



# AIRCRAFT ACTION REPORT

RESTRICTED  
(Reclassify when filled out)

CONFIDENTIAL

## I. GENERAL

(a) Unit Reporting VMS-423 (b) Based on or at Green Island (c) Report No. 218  
 (d) Date of Action 20 February 1945 (e) Take off: Time 0830-0842 (GCT); Lat. 06° 30' Long 154° 14'  
 Medium Altitude Field on target area,  
 (f) Mission Robert, New Britain. (g) Time of Return 1028 (GCT)

## II. OWN AIRCRAFT OFFICIALLY COVERED BY THIS REPORT.

(a) TYPE	(b) SQUADRON	(c) NO. OF SORTIES	(d) NO ENGAGING ENEMY A/C	(e) NO ATTACKING TARGET	(f) BOMBS AND TORPEDOES CARRIED (PER PLANE)	(g) FUZE, SETTING
PBY-1B	VMS-423	1	None	1	4 X 1000# GP	None: M-1-103 Tail: M-1-100A2
PBY-1B	VMS-423	1	None	1	4 X 1000# GP	None: M-1-103 Tail: M-1-100A2
PBY-1B	VMS-423	1	None	1	8 X 500 # GP	None: M-1-103 Tail: M-1-100A2
PBY-1B	VMS-423	1	None	1	8 X 500 # GP	None: M-1-103 Tail: M-1-100A2
PBY-1B	VMS-423	1	None	1	8 X 1000# GP	None: M-1-103 Tail: M-1-100A2

## III. OTHER U. S. OR ALLIED AIRCRAFT EMPLOYED IN THIS OPERATION.

TYPE	SQUADRON	NUMBER	BASE	TYPE	SQUADRON	NUMBER	BASE
PBY-1	VMS-423	1	Green Island				
PBY-1	VMS-423	1	Green Island				
PBY-1	VMS-423	1	Green Island				

## IV. ENEMY AIRCRAFT ENCOUNTERED (By Own Aircraft Listed in II Only).

(a) TYPE	(b) NO OBSERVED	(c) NO ENGAGING OWN A/C	(d) TIME ENCOUNTERED	(e) LOCATION OF ENCOUNTER	(f) BOMBS, TORPEDOES CARRIED; GUNS OBSERVED	(g) CAMOUFLAGE AND MARKING
None			(GCT)			
			(GCT)			
			(GCT)			
			(GCT)			

(h) Apparent Enemy Mission(s) \_\_\_\_\_

(i) Weather and Clouds at Location of Encounter(s) \_\_\_\_\_

(j) Sun or Moon \_\_\_\_\_ (k) Visibility \_\_\_\_\_

## V. ENEMY AIRCRAFT DESTROYED OR DAMAGED IN AIR (By Own Aircraft Listed in II Only).

(a) TYPE ENEMY A/C	(b) DESTROYED OR DAMAGED BY:			(c) WHERE HIT, ANGLE	(d) DAMAGE CLAIMED
	TYPE A/C	SQUADRON	PILOT OR GUNNER		
None					



AIRCRAFT ACTION REPORT

VI. LOSS OR DAMAGE, COMBAT OR OPERATIONAL, OF OWN AIRCRAFT

None

VII. PERSONNEL CASUALTIES

None

VIII. RANGE, FUEL, AND AMMUNITION DATA FOR PLANES RETURNING

Type	Miles	Miles	Av. Hours	Av. Fuel	Av. Fuel
A/C	Out	In	In Air	Loaded	Consumed
PBJ-1J	170	136	1hr48'	1016	397
PBJ-1D	170	136	1hr48'	1016	397

TOTAL AMMUNITION EXPENDED

30	50	20MM	MM	No. of Planes
:	:	:	:	Returning
None	None	None	None	5
None	None	None	None	2

IX. ENEMY ANTI-AIRCRAFT ENCOUNTERED

CALIBER	NONE	MEAGER	MODERATE	INTENSE
HEAVY	XX			
MEDIUM	XX			
LIGHT	XX			

X. COMPARATIVE PERFORMANCE, OWN AND ENEMY AIRCRAFT

No enemy aircraft encountered



# AIRCRAFT ACTION REPORT

RESTRICTED  
(Reclassify when filled out)

(OMIT THIS SHEET IF NO ATTACK WAS MADE)

CONFIDENTIAL  
REPORT No. 218

## XI. ATTACK ON ENEMY SHIPS OR GROUND OBJECTIVES (By Own Aircraft Listed in II Only).

- (a) Target(s) and Location(s) Target 101 Rabaul, New Britain Time Over Target(s) 09324004Z (Zone)  
(FOR SHIPS INCLUDE ALL IN AREA UNDER ATTACK)
- (c) Clouds Over Target .1 low clouds  
(BASE IN FEET, TYPE AND TENTHS OF COVER)
- (d) Visibility of Target Clear  
(CLEAR, HAZY, PARTIALLY OBSCURED BY CLOUDS, ETC.)
- (e) Visibility 20 miles  
(MILES)
- (f) Bombing Tactics: Type Level  
(LEVEL, GLIDE OR DIVE) Bomb Sight Used Mark 18  
(TYPE)
- Bombs Dropped per Run 4 AB  
(NUMBER) Spacing 150 feet  
(FEET) Altitude of Bomb Release 10800/11000  
(FEET)
- (g) Number of Enemy Aircraft Hit on Ground: Destroyed None Probably Destroyed None Damaged None

(h) AIMING POINT	(i) DIMENSIONS OR TONNAGE	(j) NO A/C ATTACKING (k) SQUADRON	(l) BOMBS AND AMMUNITION EXPENDED, EACH AIMING POINT	(m) NO HITS On Aiming Point	(n) DAMAGE (None, slight, serious, destroyed or sunk)
1 Rabaul #101, New Britain.		7 VMB-423	12 X 1000# AB 28 X 250 # GP		
2			2 X 1000# GP	308 (d)	
3					
4					
5					
6					
7					
8					

(o) RESULTS: (For all hits claimed on ship targets and for land targets of special interest, draw diagram, top or side view or both, as appropriate, showing type and location of hits. For all targets give location and effect of hits, and identify by numbers above. Use additional sheets if necessary).

The pattern of the bomb hits with relation to the target are shown in the attached photographs.

(p) Were Photographs Taken? Yes Photographs of Damage, When Taken, Should Be Attached By Staple.



# AIRCRAFT ACTION REPORT

RESTRICTED  
(Reclassify when  
filled out)  
**CONFIDENTIAL**  
REPORT No. **218**

**XII. TACTICAL AND OPERATIONAL DATA.** (Narrative and comment. Describe action fully and comment freely, following applicable items in check list at left. Use additional sheets if necessary.)

**ENGAGEMENT WITH ENEMY**

**OWN AIRCRAFT**

- Disposition
- Altitudes
- Speeds
- Approach Tactics
- Use of Cover, Deception
- Angles of Attack and Their Effectiveness
- Distance of Opening Fire
- Defense Tactics and Their Effectiveness

**ENEMY AIRCRAFT**

- Method of Locating, Distance
- Disposition
- Altitudes
- Speeds
- Approach Tactics
- Use of Cover, Deception
- Angles of Attack
- Distance of Opening Fire
- Defense Tactics

**COMMENTS AND RECOMMENDATIONS**

- Own Weaknesses
- Enemy Weaknesses
- Offensive Tactics, Own
- Offensive Tactics, Enemy
- Defensive Tactics, Own
- Defensive Tactics, Enemy
- Flexible Gunnery, Own
- Escort Tactics
- Fighter Direction
- Use of Radar
- Night Fighting
- Recognition, Aircraft

**ATTACK**

**OWN TACTICS**

- Method of Locating Target
- Approach to Target
- Altitudes, Speeds
- Approach
- Dive
- Pull-Out
- Dive Angle
- Strafing
- Retirement
- Defensive Tactics
- Use of Jamming

**DEFENSE, ENEMY**

- Evasive Tactics, Ships
- Concealment
- Searchlights
- Night Fighter Tactics
- Use of Jamming

**COMMENTS AND RECOMMENDATIONS**

- Bombing Tactics
- Torpedo Tactics
- Effectiveness of Bombs, Torpedoes
- Selection of Targets
- Fuzing
- Strafing Tactics
- Defensive Tactics
- Use of Radar
- Reconnaissance
- Photography
- Briefing

**OPERATIONAL**

- Navigation
- Homing
- Rendezvous
- Recognition, Ships
- Communications
- Flight Operations
- Search and Tracking
- Base Operations
- Maintenance

CALL	PILOT	T/O GREEN	T/O/T	P/C GREEN
301B21	Major LOWELL	0830	0832	1018
302B21	GRIFFITHS	0830	0832	1018
303B21	MILONE	0831	0832	1019
304B21	BATES	0831	0832	1019
305B21	LUSKY	0832	0832	1020
306B21	MEYER	0832	0832	1020
*307B21	IVERSON	0833	0841	1028

\*307B21 was assigned to lead the New Zealand Ventura squadron.

Major LOWELL, Executive Officer of VMF-423, led seven PBJs and eight PVs of NZ-2 from Green Island in a medium altitude raid on target number 101 Rabaul, New Britain. Captain IVERSON flew as leader of the New Zealand Squadron so that he could do the sighting for the PVs which do not carry a bombsight.

The formation was composed of six PBJs in two, three plane sections as the first squadron and one PBJ and eight PVs in three, three plane sections as the second squadron. The flight was airborne by 0837 and after the ~~take-up~~ proceeded on a course of 280 degrees magnetic to Cape Sena, crossed New Ireland on a heading of 263 degrees magnetic for thirty minutes toward Tawui point. One mile from Tawui point the formation turned on a course of 173 degrees magnetic for the bomb run.

At 0832 the PBJs bombed from 10,500 feet at 155 knots indicated on a course of 173 degrees magnetic. The PVs at the same speed released their bombs from 11,000 feet on a course of 160 degrees magnetic at 0841.

After bombs were released the formation broke away to the left and all planes were safe on deck at Green Island by 1032.

No anti-aircraft fire was encountered.

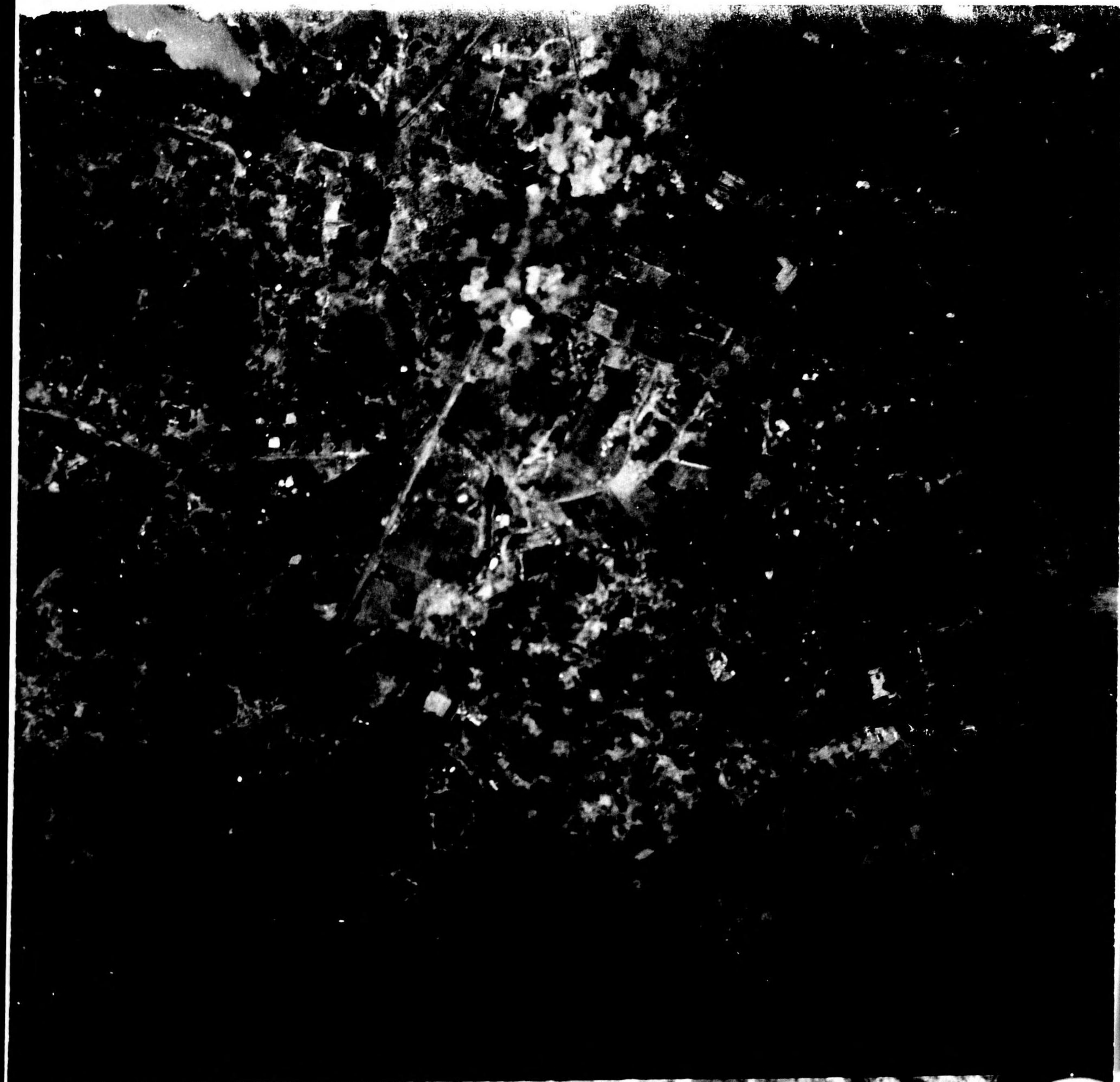
The pattern of the bomb hits with relation to the target are shown in the attached photographs.

(All times in this narrative are local).

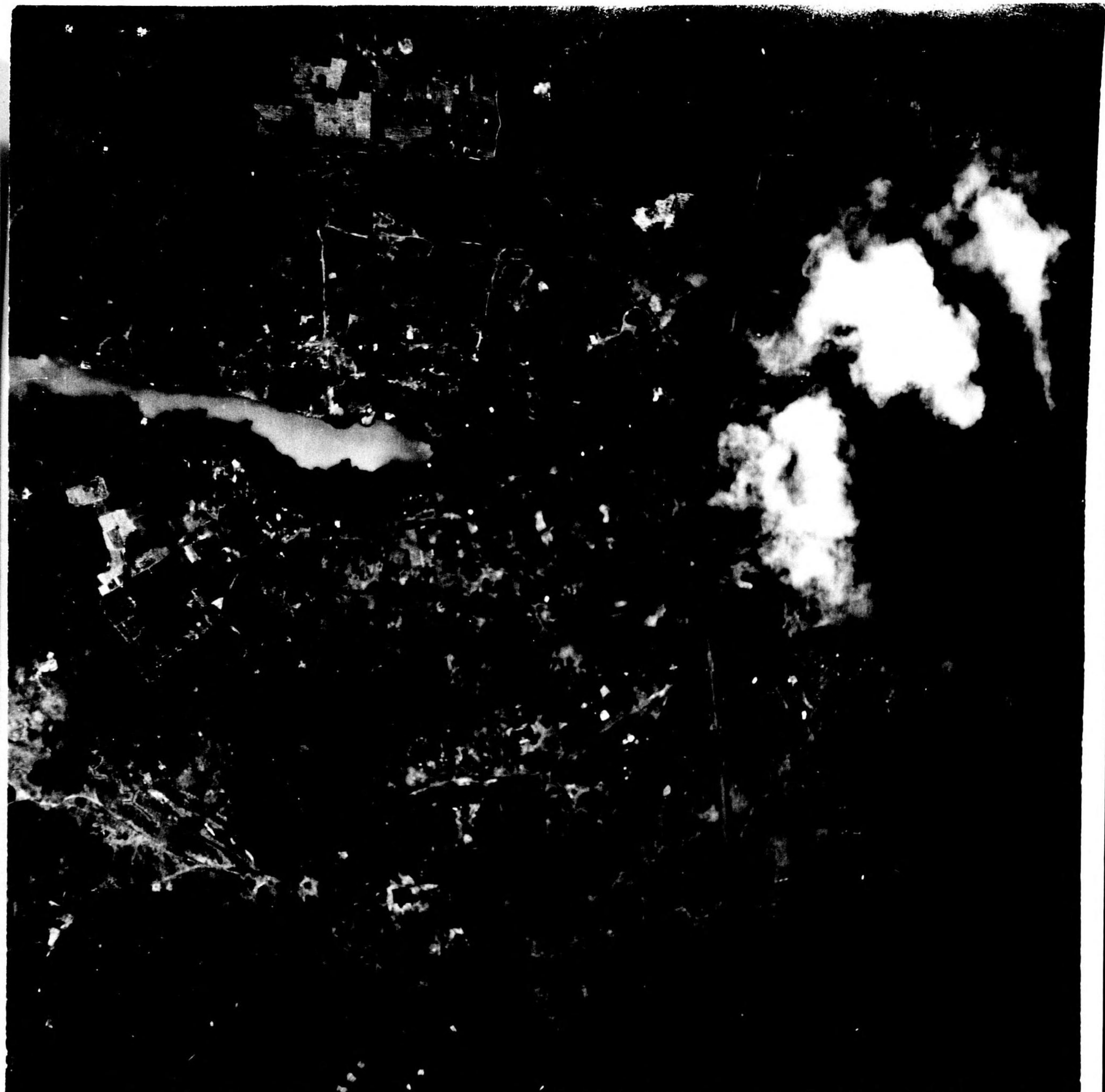
WARD D. MARTIN  
Capt., USMC  
Intelligence Officer

ARTHUR C. LOWELL  
Major, USMC  
Acting





0945  
VHS 424-107 (1/2) 2-15-45



0945  
CONFID.