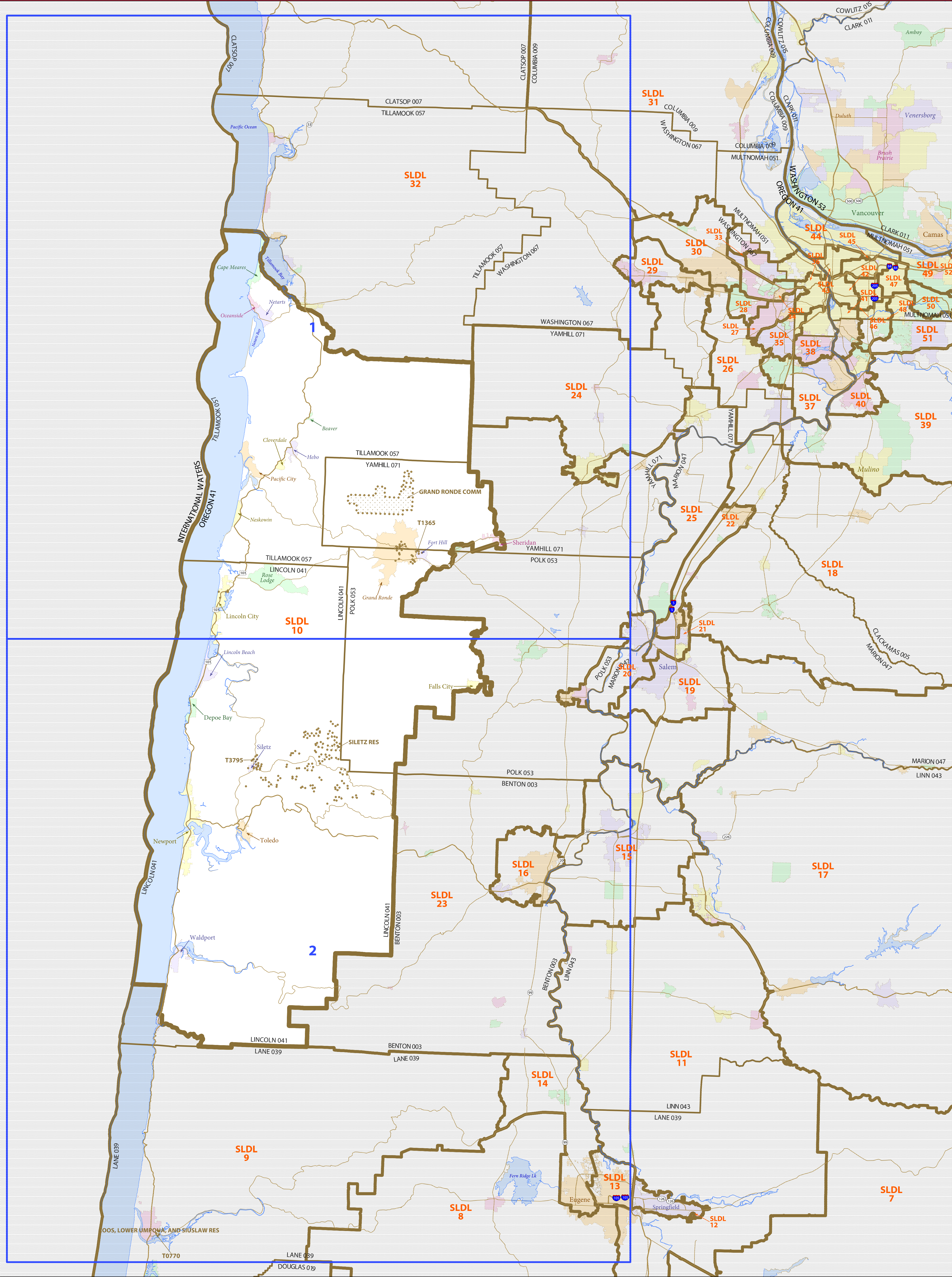


# STATE LEGISLATIVE DISTRICT REFERENCE MAP: State House District 10 (Oregon)



### LEGEND

SYMBOL DESCRIPTION	SYMBOL	LABEL STYLE
International	--- ---	CANADA
Federal American Indian Reservation	[Dotted Pattern]	L'ANSE RES 1880
Off-Reservation Trust Land	[Dotted Pattern]	T1880
State American Indian Reservation	[Dotted Pattern]	Tama Res 9400
State Legislative District - Lower (House)	[Thick Orange Line]	<b>SLDL 94</b>
State (or statistically equivalent entity)	--- ---	NEW YORK 36
County (or statistically equivalent entity)	--- ---	ERIE 029
Minor Civil Division (MCD)	--- ---	Bristol town 07485
Consolidated City	[Dotted Pattern]	MILFORD 47500
Incorporated Place <sup>2</sup>	[Color Swatches]	Davis 18100
Census Designated Place (CDP) <sup>2</sup>	[Color Swatches]	Incline Village 35100

DESCRIPTION	SYMBOL	DESCRIPTION	SYMBOL
In Interstate	[Blue Line]	Water Body	[Blue Area]
U.S. Highway	[Orange Line]	Outside Subject Area	[Grey Area]
State Highway	[Yellow Line]		
Other Road	[Thin Line]		
Railroad	[Black Line]		

Where international, state, county, and/or MCD boundaries coincide, the map shows the boundary symbol for only the highest-ranking of these boundaries.

1 MCD boundaries are shown in the following states in which some or all MCDs function as general-purpose governmental units: Connecticut, Illinois, Indiana, Kansas, Maine, Massachusetts, Michigan, Minnesota, Missouri, Nebraska, New Hampshire, New Jersey, New York, North Dakota, Ohio, Pennsylvania, Rhode Island, South Dakota, Vermont, and Wisconsin. (Note that Illinois and Nebraska have some counties covered by nongovernmental precincts and Missouri has most counties covered by nongovernmental townships.)

2 Place label color corresponds to the place fill color.  
Label colors: Davis Davis Davis Davis Davis

#### OFF-RESERVATION TRUST LAND NAMES

T0770 Coos, Lower Umpqua, and Siuslaw  
T1365 Grand Ronde  
T3795 Siletz

State legislative districts are delineated based on the results from the 2010 Decennial Census; all other legal boundaries and names are as of January 1, 2010. The boundaries shown on this map are for Census Bureau statistical data collection and tabulation purposes only; their depiction and designation for statistical purposes does not constitute a determination of jurisdictional authority or rights of ownership or entitlement.

Geographic Vintage: 2010 Census (reference date: January 1, 2010)  
Data Source: U.S. Census Bureau's MA/TIGER database (BAS13)  
Map Created by: Geography Division: June 07, 2013

U.S. DEPARTMENT OF COMMERCE Economics and Statistics Administration U.S. Census Bureau

Projection: Albers Equal Area Conic  
Datum: NAD83  
Spheroid: GRS 80  
1st Standard Parallel: 42 42 46  
2nd Standard Parallel: 45 34 55  
Central Meridian: -120 34 56  
Latitude of Projection's Origin: 41 59 44  
False Easting: 0  
False Northing: 0

The plotted map scale is 1:307050

INDEX SHEET

Total Sheets: 3  
Index Sheets: 1  
Parent Sheets: 2

NAME: State House District 10  
ENTITY TYPE: State Legislative District - Lower (House)  
ENTITY CODE: 010  
ST: Oregon (41)  
COU: Lincoln (041), Polk (053), Tillamook (057), Yamhill (071)

SLDL REF MAP INDO 2104101000