




The Rhododendron
Appalachian State
Teachers College
Boone, North Carolina.

1946



Digitized by the Internet Archive
in 2009 with funding from
University of North Carolina at Chapel Hill



The Rhododendron
Appalachian State
Teachers College
Boone, North Carolina

Memories
of 1946





as revealed day by day at
Appalachian and recorded
by the Rhododendron staff.



DEDICATION

TO MISS GAIL CLAY, *our friend and teacher,*
we take great pleasure in dedicating the 1946 edi-
tion of the RHODODENDRON. Her enthusiastic in-
terest in girls' intramural sports, her tireless efforts
toward the promotion of the evening recreational
program, and her genuine interest in the student
body, of which she was once a part, is proof of her
merit of this dedication. May this deed on our
part reflect in some small way our heart-felt grati-
tude to Miss Clay for the services she has rendered
us in this, her first year on our faculty.

Campus
walks and talks

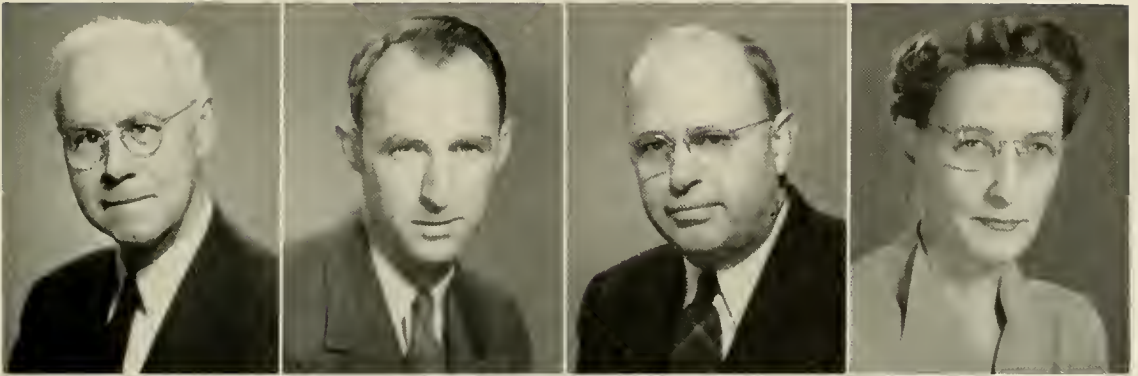






B. B. DOUGHERTY
B.S., Ph.B., D.Litt., Ed.D.
President

ADMINISTRATION



J. D. RANKIN, A.B., A.M., S.T.D.
Dean, English

HERBERT W. WEY, B.S., M.A.
Principal High School

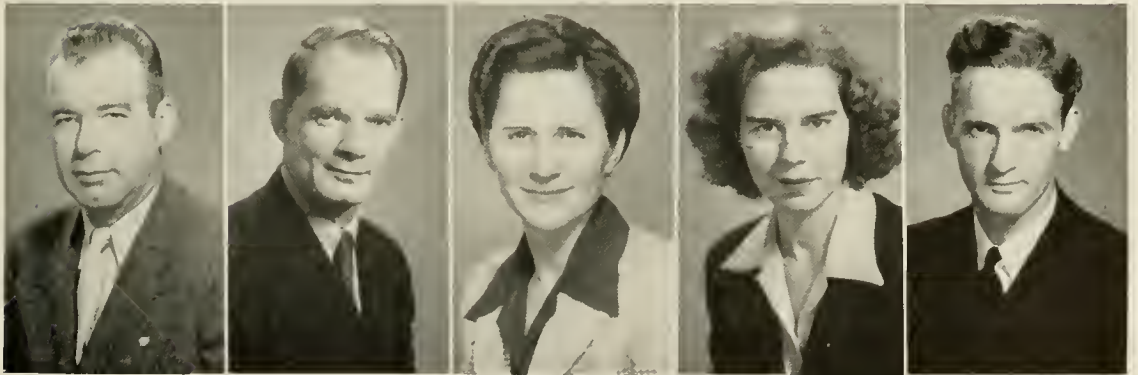
JOHN T. HOWELL, B.S., M.A., M.Ed.
Principal Elementary School

HELEN BURCH, A.B., M.A.
Dean of Women, Education

HERMAN R. EGGERS, A.B., M.A.
Registrar, Education

CHAPPELL WILSON, A.B., M.A.
Director Demonstration School

BARNARD DOUGHERTY, B.S.
Business Manager



PHYSICAL EDUCATION

E. E. GARBEE, B.S., M.A.
R. W. WATKINS, A.B., M.A.

CLEON HODGES, A.B., M.S.
GAIL CLAY, B.S.

FRANCIS HOOVER, B.S.



SOCIAL STUDIES

D. J. WHITENER, A.B., M.A., Ph.D.

V. C. HOWELL, B.A., M.A.

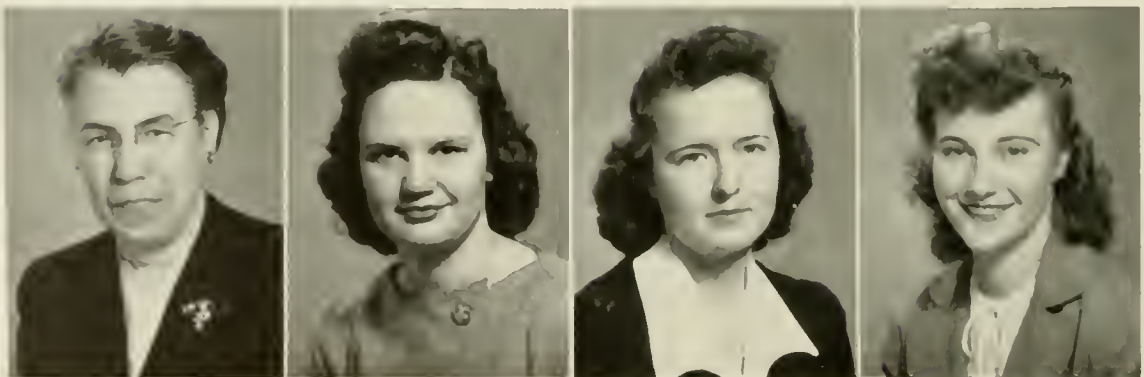
G. L. SAWYER, A.B., M.A.

W. M. GRUBBS, B.A., M.A.

F. E. WARMAN, B.S., M.A., B.D., D.D.

EDWIN S. DOUGHERTY, B.S., M.A.

J. A. WILLIAMS, A.B., M.A.



HOME ECONOMICS

LUCY BROCK, A.B., M.S.
 BETTY SUE STONE, B.S., M.S.

VIVIAN WOOD, B.S.
 ELVA SPAKE, B.S.



ENGLISH

W. AMOS ABRAMS, A.B., M.A., Ph.D.
 GRAYDON P. EGGERS, A.B., M.A., Ph.D.

META LILES, A.B., M.A.
 SUE BESS JONES, B.S., M.A.



EDUCATION

MYRTLE BRANDON WILSON, B.S., M.A.
 RALPH W. HOUSE, B.S., A.M., Ed.D.
 JOHN G. BARDEN, B.A., M.A., Ph.D.

FRENCH AND SPANISH

ELIZABETH CRADDOCK, B.S., M.A.

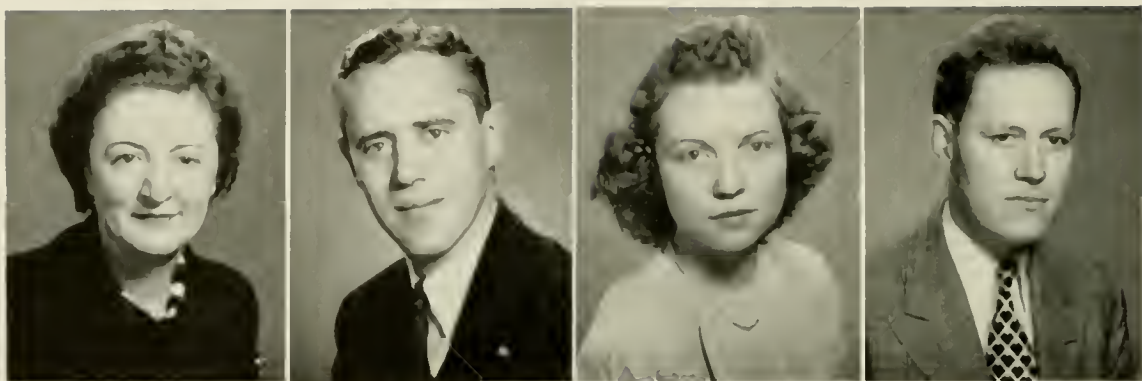


GEOGRAPHY

STARR N. STACY, B.S., M.A.

MATHEMATICS

J. T. C. WRIGHT, A.B., M.A., Ph.D.
 WALTER G. HAWKINSON, B.S.



MUSIC

VIRGINIA WARY, B.M., M.M.
GORDON NASH, A.B.

HELEN FOSTER, B.A.
GARNETT F. FELTS, B.M.



ART

CATHERINE J. SMITH, B.S., M.A.

PSYCHOLOGY

W. F. SMITH, A.B., M.A., Ph.D.

BUSINESS EDUCATION

EDITH HESS, A.B., A.M.

ELLA MAY FOGG, B.S., M.A.



SCIENCE

A. R. SMITH, A.B., M.A.
A. ANTONAKAS, B.S., M.S.

MAUDE CATHCART, B.S., M.A., Ph.D.
R. C. BUSTEED, B.S., M.S., Ph.D.

IDA BELLE LEDBETTER, A.B., M.A.



LIBRARY

MRS. EMMA H. MOORE

LOUISE MOORE, B.S. in Library Science

W. L. EURY, A.B., B.S. in Library Science

HELEN CLARDY, A.B., M.A.

ALLIE AUSTIN, B.S., B.S. in Library Science

MARY ALICE HUFF, B.S. in Library Science



HOSTESSES

SECRETARIES

MRS. HARDIN, Blan-Dolf Hall

MELBA TUGMAN

MRS. MASSEY, White Hall

Secretary to Business Manager

MISS BRIDGE, Lovill Hall



BERNICE GRAGG

MRS. DOUGLAS REDMOND

Secretary to Business Manager

Secretary to Business Manager

MRS. ED. BINGHAM

MRS. RALPH W. HOUSE

Secretary to Registrar

Secretary to Dean

C L A

On these pages
we present the
classes ~ ~ ~
freshmen
sophomores
juniors
seniors



S S E S

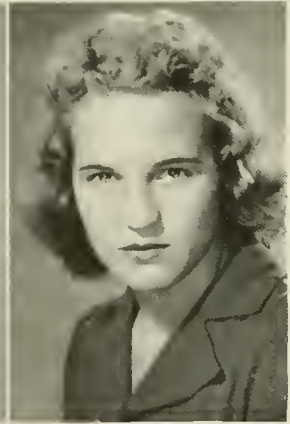




SENIOR CLASS OFFICERS

- FREDA GRUBBS CLINE *President*
- DOROTHY MOORE *Vice-President*
- GLORIA MATKINS *Secretary*
- PEARL GOLD *Treasurer*

SENIORS



FRANCES BLOUNT Newport News, Va.
Grammar Grade Education

HELEN BRUTON Mt. Gilead, N. C.
Primary Major

Y. W. C. A. 1, 2; A. C. E. Vice-President 4.

ROSADA BOWMAN Taylorsville, N. C.
Primary Major

ELLEN BURRIS Stanfield, N. C.
Grammar Grade Major

Y. W. C. A. 1, 2, 3, 4, Treasurer 4; A. C. E. 2, 3, 4, Third Vice-President 4; Future Teachers 3, 4.

White Hall Club 1, 2; Forum Club 3, 4, Officer 4; I. R. C. 4; Dyncian 1, 2; Future Teachers 3, 4; B. S. U. 1, 2, 3, 4, Officer 3, 4; B. T. U. President 3; Y. W. C. A. 1, 2, 3; Y. W. A. 1, 2, Officer 2; Mission Forum 4; Rhododendron Staff 4.

RUTH BRITAIN Casar, N. C.
Home Economics and Science

LOIS MERLE BUTLER Forest City, N. C.
Physical Education and Mathematics

Lovill Club 1, 2; Christian Fellowship Alliance 1, 2; Home Economics Club 1, 2, 3, 4; Y. W. C. A. 4; Girls Chorus 4; B. S. U. Council 1, 2, 3, 4.

Gardner-Webb Junior College 1, 2; Baptist Training Union 3, 4; Y. W. C. A. 3, 4; White Hall Club 3; W. A. A. 3, 4.

LENA RIVERS BROWN Sandy Ridge, N. C.
Home Economics and Science

FREDA GRUBBS CLINE Winston-Salem, N. C.
Home Economics and Science

White Hall Club 1, 2; Home Economics Club 2, 3, 4, Officer 4; Intramural Sports 1, 2; Y. W. C. A. 2, 3, 4; Junior Marshal; May Queen 4.

White Hall Club 1, 2; Y. W. C. A. 1, 2, 3, 4; Home Economics Club 1, 2, 3, 4; Flying Fish 2, 3, 4; Campfire Girls 3, President 3; Class Officer 3, 4, President 4; W. A. A. 4; Future Teachers 4; Junior Marshal; Student Council 4, Vice-President 4; Who's Who 4; Senior Life Saving 2; Intramural Sports 1, 4, Honorary Varsity 1.

SENIORS



VIVIAN CLINE Newton, N. C.

English and History

Lincol Rhyne College 1; History Club 2, 3, 4; Y. W. C. A. 4; Appalachian Staff 3, 4; Circulation Manager 4.

INEZ CONNER Shelby, N. C.

English and French

Gardner-Webb Junior College 1, 2; Y. W. C. A. 3, Junior Cabinet Member 3; Le Cerele Francais 3, 4, President 3, 4; Library Science Club 4; Playcrafters 3, 4; B. S. U. 3, 4; House President of New Dormitory 4; Appalachian Staff 4; Who's Who 4.

CLARA COOKE Westfield, N. C.

Primary Education

White Hall Club 1, 2; A. C. E. 3, 4; Future Teachers 3, 4; Y. W. C. A. 1, 2, 3, 4.

MARGARET ANN COOK Richfield, N. C.

English and Social Science

Pfeiffer Junior College 1, 2; Lincoln Memorial University 3; English Majors Club 4; Social Studies Club 4; B. T. U. 4.

OREN R. COUNTS St. Paul, Va.

English and History

Berea College 1, 2; Y. M. C. A. 3, President 3; Social Science Club 4; Debating 4; Veterans' Club 4.

ALMA JEANETTE CROWDER Nebo, N. C.

Home Economics and Science

Y. W. C. A. 1, 2, 3, 4; White Hall Club 1, 2; Home Economics Club 1, 2, 3, 4, Officer 3, President 4; Future Teachers 4.

RUBY DANCY North Wilkesboro, N. C.

Home Economics and Science

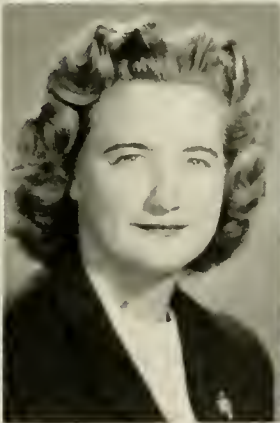
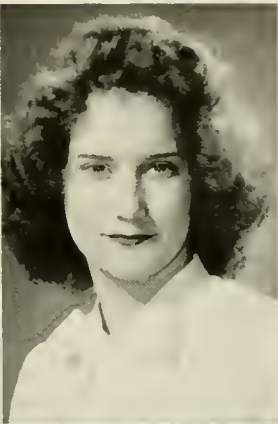
Home Economics Club 1, 2, 3, 4; Playcrafters 4; Freshman Glee Club; A Cappella Choir 2; Girls' Chorus 3-4; Y. W. C. A. 3, 4; Westminster Fellowship 1, 2, 3, 4, Officer 3; Intramurals 1, 2, 3.

JAMES M. DRY Norwood, N. C.

Physical Education and History

Pfeiffer Junior College 1, 2; Y. M. C. A. 1, 2, 3, 4, President 3; Social Science Club 4; Veterans' Club 4.

SENIORS



MILDRED EATON Cooleemee, N. C.
English and History

Y. W. C. A. 1, 2; I. R. C. 2, 3, 4, Treasurer 4; Forum Club 2, 3, 4, President 4; Future Teachers Club 4; Social Science Club 2, 3, 4; Lovill Club 1; Class Officer 3, Treasurer.

BETTYE ELLIS Boone, N. C.
Spanish and Science

CARRIE LEE FARTHING Boone, N. C.
English and French

Playcrafters 1; I. R. C. 2, 3, 4, Officer 4; Forum Club 2, 3, 4, Officer 3; Los Picaros Espanoles 3, 4, Vice-President 3, President 4; Le Cercle Francais 2, 3, 4, Officer 4; Senior Superlative.

AMANDA FEREBEE Mocksville, N. C.
Grammar Grade Education

Y. W. C. A. 1, 2, 4; Lovill Club 1; Rhododendron Staff 4.

ROSALYN FRANCIS Portsmouth, Va.
Primary Education

Y. W. C. A. 1, 2, 3, 4; A. C. E. 2, 3, 4, President 4; Vernician 2, 3, 4, Officer 4; Junior Marshal; Future Teachers Club 3, 4; White Hall Club 1; Westminster Fellowship 2, 3, 4; Playcrafters 2; May Court Attendant 4.

WILBUR FRANKLIN Jonas Ridge, N. C.
Mathematics

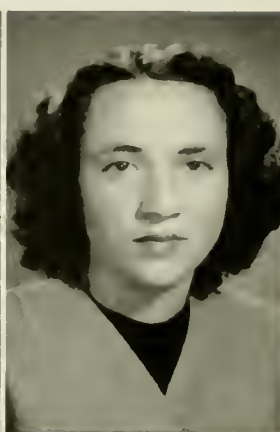
BETTY GABRIEL Lincolnton, N. C.
Physical Education and Mathematics

Student Body President 4; Student Council 2, 3, 4; Y. W. C. A. 1, 2, 3, 4, Senior Cabinet 2, 3, 4; I. R. C. 2, 3, 4; Vice-President 3; Forum Club 2, 3, 4, Secretary 3; Class Officer 3; Appalachian Staff 2, 3, 4, Assistant Sports Editor 3, 4; Flying Fish 1, 2, 3, 4, President 3; W. A. A. 1, 2, 3, 4, Officer 3, 4; Intramural Manager 4; Girls' "A" Club 2, 3, 4; Senior Life Saving 1, 2, 3, 4; Water Safety Instructor 2, 3, 4; First Aid Instructor 3, 4; Who's Who 3, 4; Junior Marshal; Campus Superlative 4; Senior Superlative.

NELLIE GABRIEL North Wilkesboro, N. C.
Primary Education

Appalachian Staff 2, 3, 4 Assistant Business Manager 3. Business Manager 4; Secretary of A. C. E. 4; Band Drum Majorette 1, 2, 3, 4; Cheerleader 2, 3, 4; May Court 1; Y. W. C. A. 1, 2, 3, 4, Cabinet Member 3, 4; Junior Marshal 3; Rhododendron Staff 3; Vice-President Sophomore Class; Campus Superlative 4; Senior Superlative; Who's Who 4; Flying Fish 3, 4.

SENIORS



PEARL GOLD Shelby, N. C.

Home Economics and Science

Home Economics Club 1, 2, 3, 4; Intramural Sports 1, 2, 3, 4; Women's Athletic Association 3, 4; Christian Fellowship Alliance 1, 2; Westminster Fellowship 4; Y. W. C. A. 1, 2, 3, 4; Cass Officer 4.

POLLYANNA GORDON Pinnacle, N. C.

Home Economics and Science

Lovill Club 1, 2, 3, 4, President 4; Home Economics Club 1, 2, 3, 4, Vice-President 4; Women's Athletic Association 2, 3, 4; Y. W. C. A. 2, 3, 4.

JULIA GRAY Greensboro, N. C.

Primary Education

Brevard Junior College 1, 2; Campfire Girls 3; A. C. E. 4; Y. W. C. A. 4; White Hall Club 3; Youth Fellowship 3, 4; Future Teachers 4.

BETTY JEAN GRIFFIN Forest City, N. C.

Grammar Grade Education

Y. W. C. A. 2, 3, 4, Officer 4; Who's Who 3, 4; Student Council 3; Future Teachers 3, 4, President 4; Appalachian Staff 3, 4; Rhododendron Staff 4; Forum Club 2, 3, 4, Officer 3; International Relations Club 2, 3, 4; Youth Fellowship 2, 3, 4, President 3, 4; May Court 4.

BONNIE JEAN HAMRICK Ellenboro, N. C.

Home Economics and Science

Y. W. C. A. 1, 2, 3, 4; White Hall Club 1; Home Economics Club 1, 2, 3, 4, Officer 3; Future Teachers 3, 4.

JOYCE HAYES North Wilkesboro, N. C.

English and Business Education

Y. W. C. A. 1, 2, 3, 4; Business Education Club 2, 4; Lovill Club 1, 2, 3, 4; Floor Representatives 2, 3.

BERNITA HUGHES Bakersville, N. C.

Home Economics and Science

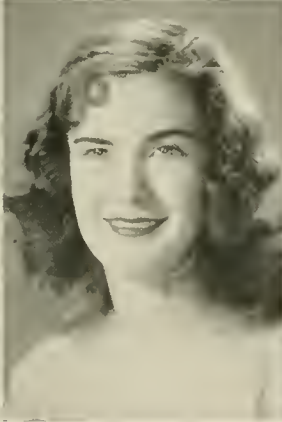
Home Economics Club 1, 2, 3, 4, Officer 2, 3; B. S. U. 1, 2, 3; B. S. U. Council 1, 2; B. T. U. Officer; Sunday School Officer; White Hall Club 1, 2, Officer 2; Future Teachers 3, 4; Playcrafters 4, Officer 4.

MILDRED INGRAM Statesville, N. C.

Home Economics and Science

Home Economics Club 1, 2, 3, 4; Y. W. C. A. 1, 2, 3, 4; Lovill Club 1; Dyncian Society 1.

SENIORS



MARY HARRILL KIRKHAM Forest City, N. C.
Mathematics and Social Studies

WRETHA MARSH Boone, N. C.
Physical Education and History

NELL R. LEWIS Parkton, N. C.
Primary Education

W. A. A. 1, 2; History Club 1, 2, 3, 4; Intramural Sports 1, 2, 3, 4; Playcrafters 1; Methodist Youth Fellowship 1, 2, 3, 4.

MARGARET LINEBERGER Lincolnton, N. C.
Grammar Grade Education

HELEN MARTIN Broadway, N. C.
Business Education and History

White Hall Club 1; Glee Club 1; A Cappella Choir 2; Girls' Chorus 4; Y. W. C. A. 1, 2, 3, 4; Cabinet 4; Vernician Literary Society 2, 3, 4; President 4; May Court Attendant 2; Westminster Fellowship 4; Rhododendron Staff 4.

Y. W. C. A. 1, 2, 3, 4; Business Education Club 2, 3, 4; History Club 2, 3, 4; Westminster Fellowship 1, 2, 3, 4; Vernician Society 1; Baton Club 1.

GLORIA MATKINS Elon College, N. C.
Physical Education and Primary Education

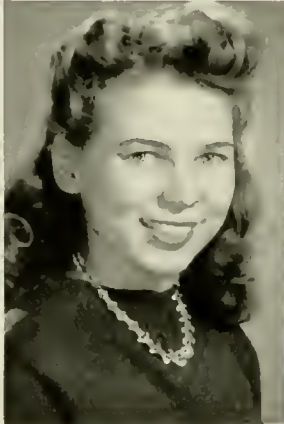
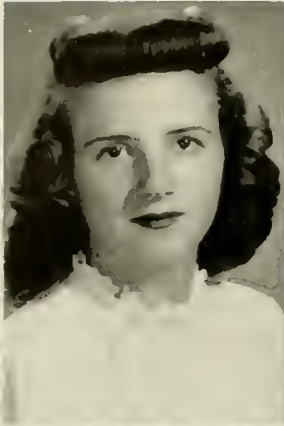
WINNIE SUE McLEAN Cricket, N. C.
Primary Education

White Hall Club 1, 2; Freshman Glee Club 1; Girls' Chorus 2, 3; Forum Club 2, 3, 4; Officer 3; International Relations Club 2, 3, 4; A. C. E. 3, 4; Future Teachers 3, 4; Y. W. C. A. 1, 2, 3, 4; Student Council 3, 4; W. A. A. 3, 4; President of Junior Class; May Court Attendant 3; Appalachian Staff 3; Editor 4; Flying Fish Club 3, 4; Junior Marshal; Who's Who 3, 4; Class Officer 4; Senior Superlative.

GORMAN MICHAEL Lexington, N. C.
History and English

Y. M. C. A. 1, 2, 3, 4; Delta Phi Sigma 1, 2, 3; History Club 4; Veterans Club 4.

SENIORS



MARTHA VIRGINIA MILLER - Nathans Creek, N. C.

Mathematics and Science

Y. W. C. A. 1, 2, 3, 4; White Hall Club 1, 2; Christian Fellowship Alliance 2; Dyncian Literary Society 2; Methodist Club 1, 2; Campfire Girls 3; Methodist Youth Fellowship 1, 2, 3, 4, Council 2, 3; Women's Athletic Association 2, 3, 4; Intramural Sports 1, 2, 3, 4; Mathematics Club 3.

DOROTHY LEE MOORE Galax, Va.

Physical Education and Mathematics

Class Officer 2, 4; Lovill Club 1, 3; Flying Fish 2, 3, 4, Officer 3, President 4; Future Teachers 3, 4; W. A. A. 1, 2, 3, 4; Intramural Sports 1, 2, 3, 4, Gold Captain 4, Intramural Manager 3; Life Saving 2, 3, 4; Water Safety Instructor 3; May Court 3; Girls' "A" Club 4; Y. W. C. A. 2, 3, 4; Student Council 4, Treasurer 4; Who's Who 4.

CURTIS MURRAY Boone, N. C.

Grammar Grade Education

I. R. C. 2, 3, 4, President 4; Forum Club 2, 3, 4, Officer 2, President 3; Who's Who 4; Rhododendron Staff 4, Business Manager; Y. M. C. A. 2, 3, 4, Chaplain 2; Baseball 3.

MRS. UNA PERRY PROPST Morganton, N. C.

Grammar Grade Education

Y. W. C. A. 1, 2, 3, 4; Future Teachers 3, 4; B. T. U. 2, 3, 4.

ELLEN PHILBECK Shelby, N. C.

Physical Education and History

Class Officer 1; Y. W. C. A. 1, 2, 3, 4, Senior Cabinet Member 3, 4; Student Council 4; Future Teachers 3, 4; Appalachian Staff 2, 3, 4, Sports Editor 3, 4; Rhododendron Staff 4, Editor; May Court Attendant 2; W. A. A. 1, 2, 3, 4, Officer 3, President 4; Girls' "A" Club 2, 3, 4; History Club 4; Flying Fish 1, 2, 3, 4; Intramural Sports 1, 2, 3, 4, Gold Captain 3; Life Saving 1, 2, 3, 4; Water Safety Instructor 2, 3, 4; Who's Who 3, 4; Chief Marshal 3; Methodist Youth Fellowship 2, 3; Campus Superlative 4.

AGNES PRESTON Boone, N. C.

Music and Primary Education

EVELYN RAY Boone, N. C.

Physical Education and Science

Baton Club 1, 2, 3, President 2, Leader 3; W. A. A. 1, 2, 3, Vice-President 3; Intramural Sports 2, 3; Flying Fish 2, 3, Officer 3.

JAMES E. REESE Pensacola, Fla.

Mathematics and Physical Education

Wrestling 1, 2, 3, 4, Captain 4; "A" Club 1, 2, 3, 4; Mathematics Club 2, 3, President 3; Scouting Troop 1, 4; Intramural Sports 1, 2, 3, 4; Senior Superlative.

SENIORS



MARY ELLIS REESE Mars Hill, N. C.
Physical Education and Science

Mars Hill College 1, 2; Flying Fish 3, 4; W. A. A. 3, 4; Y. W. C. A. 4; B. S. U. 3, 4; Maid of Honor in May Court 4; Senior Superlative 4.

PEGGY ROGERS Fair Bluff, N. C.
Grammar Grade Education

Y. W. C. A. N. C. 1; Y. W. C. A. 2, 3, 4 President 4; B. S. U. 2, 3, 4, President 4; Vernician Literary Society 2, 3; Girls' Chorus 2, 4; Future Teachers 4; Rhododendron Staff 3, 4, Associate Editor 4; Who's Who 4; Senior Superlative.

ISABEL ROLLINS Boone, N. C.
Business Education

BONITA ROMINGER Rominger, N. C.
Grammar Grade Education

Y. W. C. A. 1, 2, 3, 4; Band 1; I. R. C. 2, 3, 4, Officer 3; Forum Club 3, 4; Playcrafters 3, 4, President 4; Junior Marshal; Spanish Club 3, Officer 3; Future Teachers 4; Methodist Youth Fellowship 2, 3, 4; Rhododendron Staff 4.

HAROLD T. RUMMAGE Albemarle, N. C.
Grammar Grade Education

CLARA RUTLEDGE Lenoir, N. C.
English and Social Studies

Girls' Chorus 2; Playcrafters 2, 3, 4, Officer 3, Master Craftsman 3, Editor Playbill 4; Y. W. C. A. 3; Future Teachers 3, 4; Social Studies 2, 3, 4; Junior and Senior Marshal; Vice-President of Senior Class.

ELIZABETH B. SHAW Mooresville, N. C.
Business Education and History

Baton Club 3, 4; Business Education Club 3, 4; History Majors' Club 3, 4; Lovill Club 1, 2; Y. W. C. A. 1, 2, 3; B. S. U. 1, 2, 3.

A. J. SMITH Whiteville, N. C.
Music and History

A Cappella Choir 1; B. S. U. 1, 2; Music Club 2; History Club 2, 3, 4; Band 3, 4, President 3; Y. M. C. A. 3, 4; Playcrafters 3; Swing Orchestra 3, 4, Leader 4; College Choir President 3, 4; Assistant Director Girls' Chorus 4; Future Teachers 4; Who's Who 4; State Music Composition Contest 4; Senior Superlative.

SENIORS



MARY ELOISE SMITH Charlotte, N. C.

Mathematics, English and Physical Education

W. A. A. 1, 2, 3, 4; Black Captain 4; Flying Fish 3, 4; Y. W. C. A. 1, 2, 3, 4; Forum Club 2, 3, 4, Officer 3; President 4; I. R. C. 2, 3, 4, Officer 4; Student Council 4; Who's Who 4; Appalachian Staff 4; Westminster Fellowship 1, 2, 3, President 3; Girl's "A" Club; Senior Life Saving 3; Junior Marshal.

HELEN SMITH Charlotte, N. C.

Physical Education and Science

Queens College 1; W. A. A. 2, 3, 4, Officer 4; Baton Club 3, 4; Flying Fish 4; Y. W. C. A. 2, 3, 4; Intramural Sports 2, 3, 4.

FRANCES SHERRILL Mooresville, N. C.

Mathematics and French

Y. W. C. A. 1, 2, 3, 4, Junior Cabinet Member 3, Officer 4; French Club 2, 3, 4, Officer 3; Future Teachers 4, Officer 4.

MADELEINE SMOOT Mocksville, N. C.

Mathematics and Science

Freshman Girls' Glee Club 1, Officer; Y. W. C. A. 1, 2, 3, 4, Cabinet 4; Thalian Literary Society 1, 2, 3, President 2; B. S. U. Council 1, 2, 3, 4; B. T. U. 1, 2, 3, 4, President 2, 3; A. Cappella Choir 2; Girls' Chorus 3, 4; I. R. C. 2, 3, 4, Officer 2, 3; Forum Club 2, 3, 4, Officer 2, 3, 4; Future Teachers 3, 4, Officer 4; Appalachian Staff 3, 4; Rhododendron Staff 4; Who's Who 3, 4; Student Council 3, Officer 3; Playcrafters 2, 3, 4; Intercollegiate Debating 3.

LORRAINE SIMPSON Monroe, N. C.

Grammar Grade Education

B. S. U. Council 3, 4; Y. W. C. A. 1, 3; B. T. U. 1, 2, 3, 4; I. R. C.; White Hill Club 1, 2.

HELEN SOSSAMON Midland, N. C.

Home Economics and Science

Home Economics Club 1, 2, 3, 4; Y. W. C. A. 3, 4; Methodist Club 4; Girls' Chorus 4.

MRS. LOUISE SOWELL Hiddenite, N. C.

Grammar Grade Education

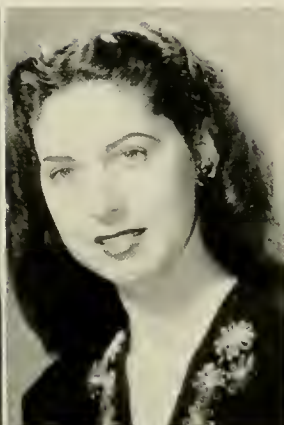
George Peabody College for Teachers 1 (summer); University of Tennessee 1; Y. W. C. A. 2, 3, 4; B. S. U. 2, 3, 4; Intramural Basketball 2, 3.

PAUL N. SOWELL Savannah, Ga.

History and Physical Education

Y. M. C. A. 1, 2, 3, 4, Officer 3, 4; Social Studies Club 1, 2, 3, 4; Basketball 2; Baseball 2; Intramurals 2; Chief Marshal 3 (summer); Debating Club 4; Methodist Club 2; Rhododendron Staff 4.

SENIORS



WORTH SWEET Mt. Airy, N. C.
Physical Education and History

LOUISE UPCHURCH Mt. Gilead, N. C.
Physical Education and History

W. A. A. 1, 2, 3, 4; Flying Fish 2, 3, 4; History Club 3, 4; White Hall Club 1, 2, President 2; Girls' "A" Club 4; Intramural Sports 1, 2, 3, 4; Water Safety Instructor 2, 3, 4; Swimming Instructor 3, 4.

JOYCE TATE Forest City, N. C.
Grammar Grade Education

ELEANOR VANCE Huntersville, N. C.
Home Economics and Science

Home Economics Club 1, 2, 3, 4; Westminster Fellowship 1, 2, 3, 4; White Hall Club 1; Vernician Literary Society 1, 2, 3, 4; Playcrafters 1; Y. W. C. A. 1, 2, 3, 4; Campfire Girls 1; Baton Club 1, 2, 3, 4.

Gardner-Webb Junior College 1, 2; B. T. U. 3; Y. W. C. A. 3; White Hall Club 3; Playcrafters 3.

CLAUDIA THARPE Statesville, N. C.
Home Economics and Science

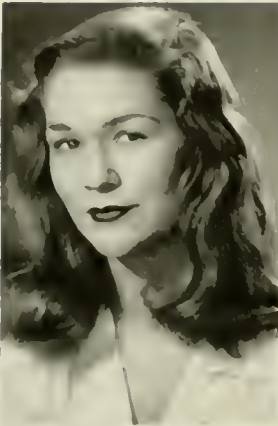
MARY LILLIAN WILCOX Boone, N. C.
Primary Education

Lovell Club 1, 2; Christian Fellowship 1, 2; Girls' Chorus 4; Home Economics Club 1, 2, 3, 4; Y. W. C. A. 1, 2, 3, 4.

ANNE TRUITT Sparta, N. C.
Grammar Grade Education

NINA WILSON Statesville, N. C.
Primary Education

SENIORS



FRANCES HOLT YARBOROUGH Lexington, N. C.
English and History

White Hall Club 1; Baton Club 1, 2, Officer 2; Cheerleader 2, 3, 4; Playcrafters 1, 2, 3, 4; Y. W. C. A. 1, 2, 3, 4; Dymecian Literary Society 1, 2, 3; Appalachian Staff 1, 2, 3; Social Studies Club 4, Officer 4; Future Teachers 3, 4, Officer 4; Rhododendron Staff 2; Class Officer 4.

JUANITA YOUNG Burnsville, N. C.
Home Economics and Science

Asheville College 1, 2; Western Carolina (summer school) 3; Home Economics Club 3, 4, Officer 4; Future Teachers 4; Lovell Club 3, 4

WAYNE CAUDILL North Wilkesboro, N. C.
Grammar Grade Education

PALMER SLEIGH BLAIR Boone, N. C.
Post Graduate

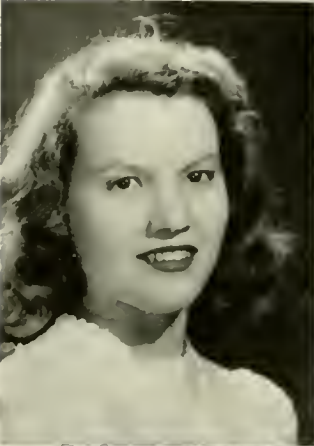
GEORGE WATTS Shelby, N. C.
Physical Education

RALPH ABERNATHY Hickory, N. C.
Special

HAROLD RUMMAGE Albemarle, N. C.
Grammar Grade Education



JUNIORS



JUNIOR CLASS OFFICERS

REBEKAH RIVERS	<i>President</i>
KATHLEEN MOORE	<i>Vice-President</i>
AUDREY SMITH	<i>Secretary</i>
JOYCE BOOKSHIRE	<i>Treasurer</i>

JUNIORS

EDWARD ADELMAN Wilkesboro, N. C.
 WILHEMINA AYERS Burnsville, N. C.
 RUTH BAILEY Toecane, N. C.
 ALLEN H. BANDY Lincolnton, N. C.
 JOYCE BENFIELD Valdese, N. C.
 HELEN BINGHAM Boone, N. C.

HELEN BOWDITCH Toecane, N. C.
 LILLIAN M. BRADLEY Boone, N. C.
 HATTIE L. BRANNON Spartanburg, S. C.
 JOYCE E. BROOKSHIRE .. Taylorsville, N. C.
 JEAN BROWN Mars Hill, N. C.
 NAOMI RUTH BROWN Rockwell, N. C.



JUNIORS

MARY B. BUCHANAN	Clarrissa, N. C.	BETTY CLINE	Newton, N. C.
ELOISE BEATRICE BUFF	Valdese, N. C.	MARION MOORE COBB	Rhodhiss, N. C.
ROSENA BURTON	Winston-Salem, N. C.	MELBA CORNETT	Creston, N. C.
JAMES L. CALLOWAY	Concord, N. C.	WILLIAM C. CRUMMETT	Staunton, Va.
MARTHA ELLEN CALTON	Bostic, N. C.	OBED DAY	Boone, N. C.
BETTY A. CANTRELL	Spartanburg, S. C.	ADA DELLINGER	Stanly, N. C.



JUNIORS

RACHEL B. DELANCY Reidsville, N. C.

SARAH TILLIE EAKER Crouse, N. C.

MARY EVELYN ELLIS Heaton, N. C.

THELMA FARTHING Boone, N. C.

IRENE FOWLER Walnut Cove, N. C.

MARCIA GABRIEL Sherrill's Ford, N. C.

NANNIE L. GENTRY Statesville, N. C.

REX B. GORDON Pilot Mountain, N. C.

ELEANOR M. GREENE Spindale, N. C.

LILLIAN GRIFFITH Newell, N. C.

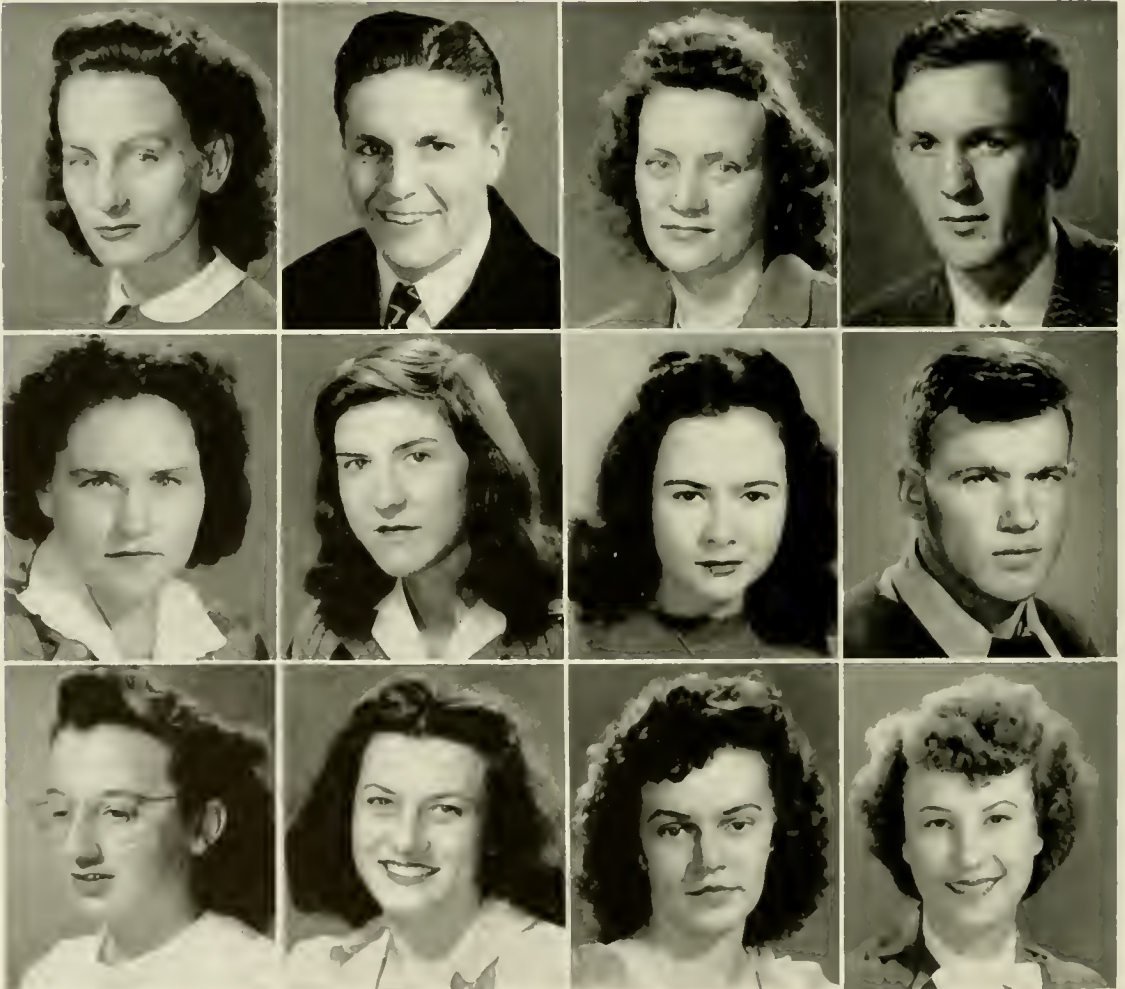
GLORIA GRILL Valdese, N. C.

MARY JEAN GROSE Statesville, N. C.



JUNIORS

MARY E. GUY	Banner Elk, N. C.	MAYO HUNEYCUTT	Indian Trail, N. C.
CHARLES W. HALL	Iva, S. C.	CLAUDE HOYLE	Connelly Springs, N. C.
EDNA HARRELL	Forbes, N. C.	MRS. MYRTLE HOYLE	Connelly Springs, N. C.
WILLIAM D. HARRILL	Forest City, N. C.	ELOISE MARY HUGHES	Forbes, N. C.
DORIS HARRISON	Grantsboro, N. C.	MARY SUE HUNTER	Day Book, N. C.
MILDRED HILL	Mt Airy, N. C.	VIRGINIA E. ISAACS	Elk Park, N. C.



JUNIORS

FRANCES P. JACKSON Mill Spring, N. C.

PEARL JAMES Amy, N. C.

GRACE JENKINS Ellenboro, N. C.

LEWIS JENKINS .. North Wilkesboro, N. C.

NELDA CENIA JONES Bakersville, N. C.

LOUIS JOYCE Sandy Ridge, N. C.

JOE KELLY North Wilkesboro, N. C.

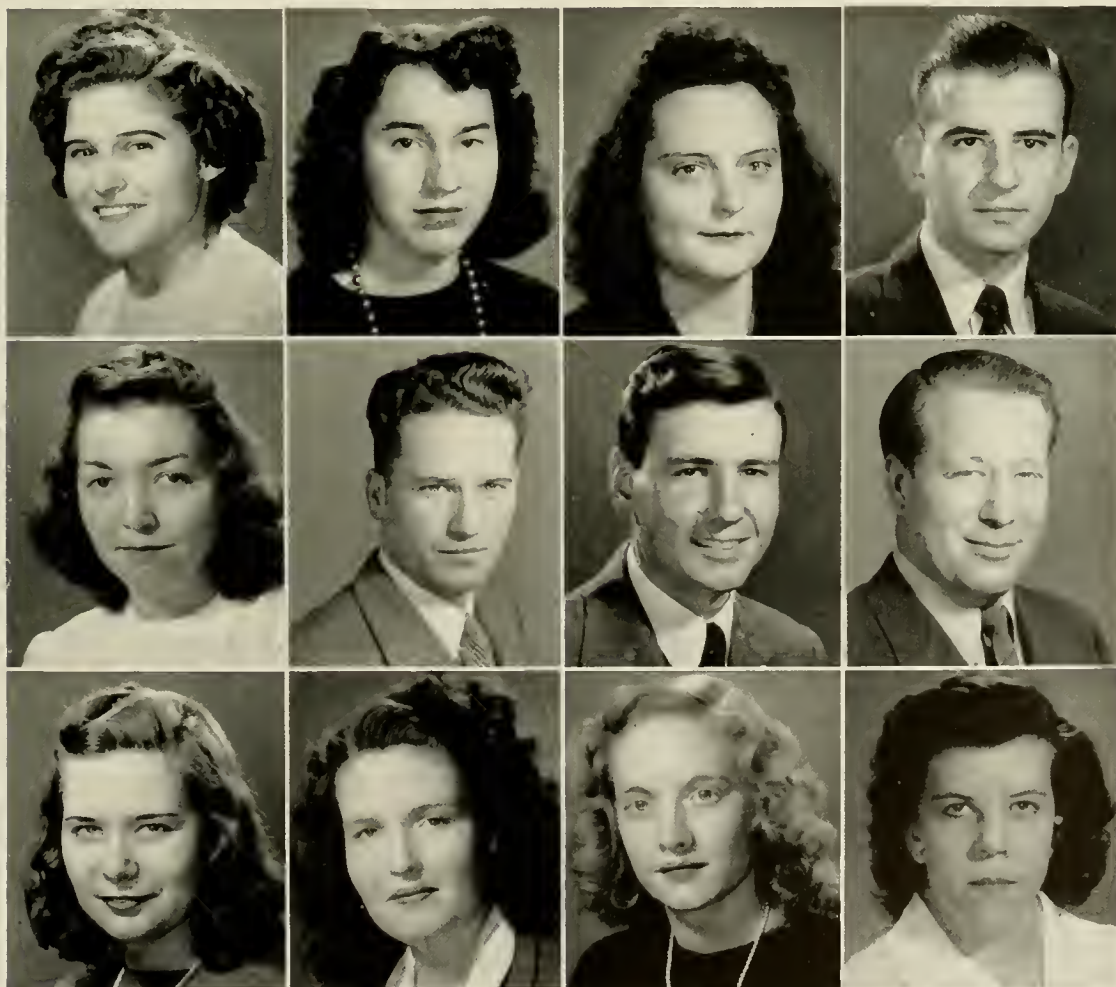
J. C. KEETER Forest City, N. C.

MARY SUE KEETER Cliffside, N. C.

BARBARA E. KEPLEY Salisbury, N. C.

MARGARET LEDBETTER Marion, N. C.

KATHERINE LINGERFELDT
Bessemer City, N. C.



JUNIORS

JACQUELINE LOWRY	Jefferson, N. C.	FRANCES EMMA McCALL	Marion, N. C.
GUY McCANN	Roaring Gap, N. C.	NANCY McLEAN	Belmont, N. C.
MARION MARTIN	Cramerton, N. C.	MAMIE E. McNEELY	Morganton, N. C.
MILDRED E. MARTIN	Summerfield, N. C.	EVELYN MILLER	Statesville, N. C.
MRS. MADGE C. MAXFIELD	Honaker, Va.	SILVER MILLER	West Jefferson, N. C.
JUNE McBEE	Spruce Pine, N. C.	HELEN IRENE MOORE	Weaverville, N. C.



JUNIORS

KATHLEEN MOORE Galax, Va.

HELEN GREY MOXLEY Sparta, N. C.

WILLIAM NOLEN Crouse, N. C.

RUBY NELL OWENS Ellenboro, N. C.

ALTA LOUISE PONDER Mars Hill, N. C.

LOUVENIA PRESNELL Banner Elk, N. C.

EUNICE PRUITT Casar, N. C.

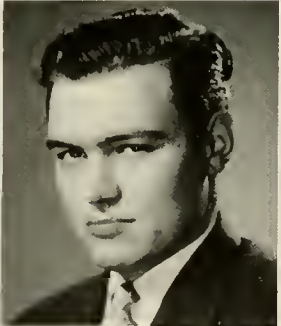
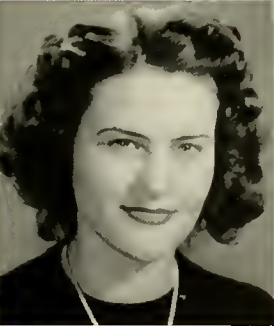
LEWIS DOYLE PRUITT Casar, N. C.

MARY JO RAGAN Boone, N. C.

BILL RANKIN Salisbury, N. C.

JUNE RENFROW Charlotte, N. C.

EMMAGENE REYNOLDS Lincolnton, N. C.



JUNIORS

REBEKAH RIVERS ... Mountain City, Tenn.
 DAVID W. ROLLINS Boone, N. C.
 ELIZABETH SCISM Shelby, N. C.
 SAVANNAH SEAGRAVES
 Roaring River, N. C.
 HAL SHOEMAKER Statesville, N. C.
 OMA LEE SHEW Elkin, N. C.

ANNIE LAURIE SMITH Wagram, N. C.
 AUDREY SMITH Pinnacle, N. C.
 PATSY ROSE SMITH Mooresville, N. C.
 MARY IDA STEELE Bear Poplar, N. C.
 REBECCA TOMLINSON Black Creek, N. C.
 GRACE ELAINE TUCKER ... Monroe, N. C.



JUNIORS

MAGDALENE TURPIN Mt. Airy, N. C.

MARY LOUISE WATKINS Morganton, N. C.

LILLIAN LOUISE WEAVER Lansing, N. C.

DOROTHY WHISNANT Hickory, N. C.

ARLENE WILLIAMS Rusk, N. C.

BERTHA FAYE WILLIS Mars Hill, N. C.

RUBY WILSON Granite Falls, N. C.

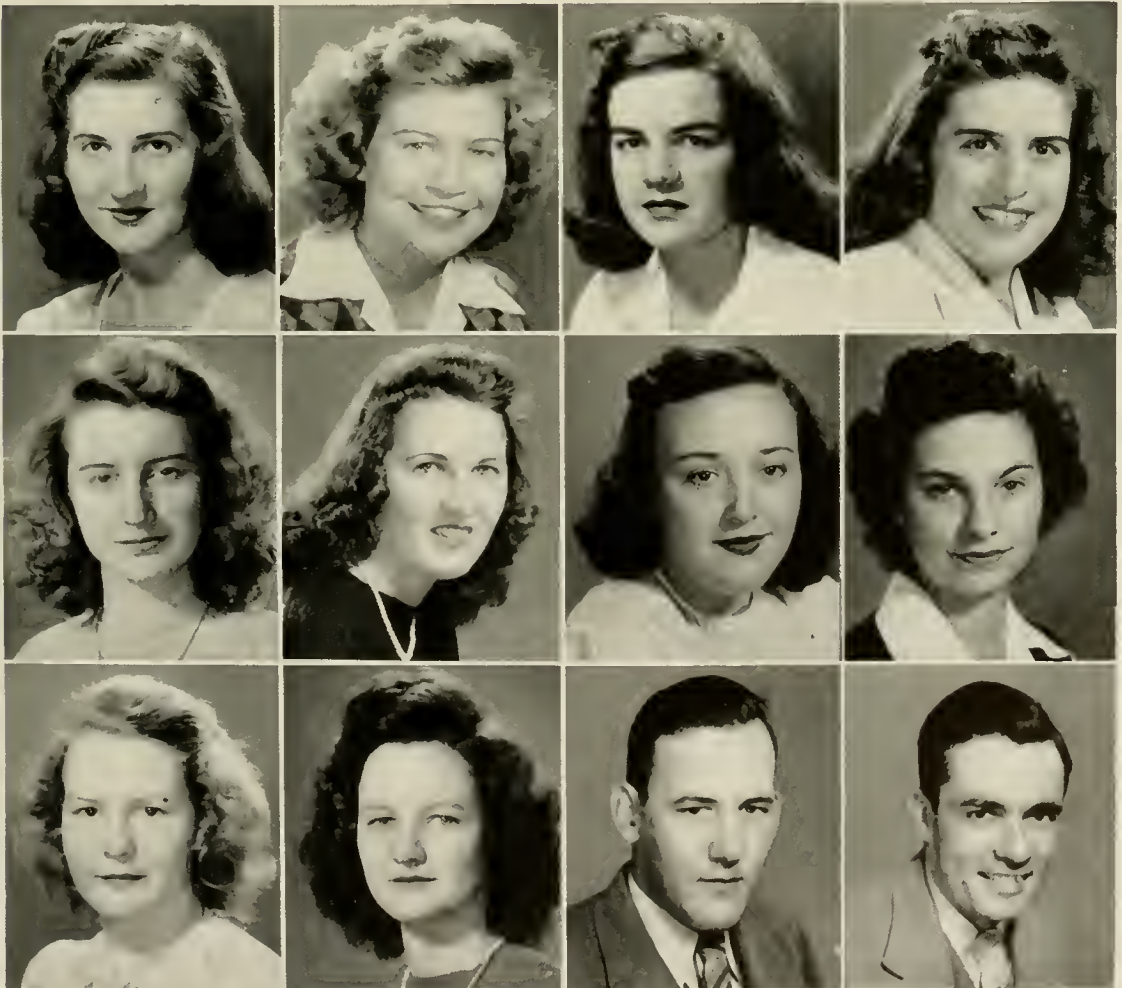
JEAN WOLFE Pittsboro, N. C.

MADGE WOOD Vale, N. C.

EDITH J. YORK Waynesville, N. C.

JAMES BRANDON Yadkinville, N. C.

ANDY DICKERSON Orlando, Fla.





SOPHOMORES



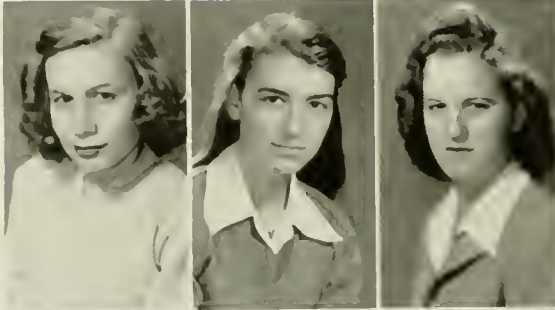
SOPHOMORE CLASS OFFICERS

S. B. WHITE *President*
 LOU RHYNE *Vice-President*
 JOHN HONBARRIER *Secretary*
 MARY ANN BARRETT *Treasurer*

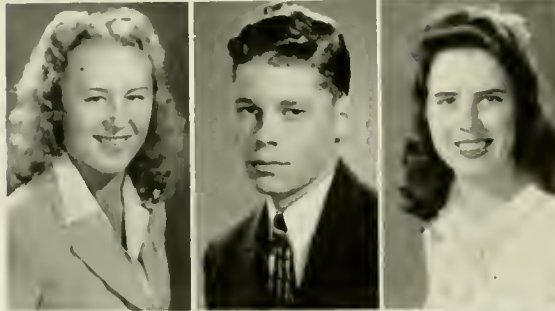
SOPHOMORES



MINNIE LOU ALLEN Polkton, N. C.
 GOZELLE ANDREWS Boomer, N. C.
 NANNETTE BANNER Newland, N. C.



BETSY JANE BARRETT Burlington, N. C.
 MARY ANNE BARRETT Burlington, N. C.
 FAYE BARRIER Jonas Ridge, N. C.



BERNICE BEAVER China Grove, N. C.
 JAY LOAL BENBOW Oak Ridge, N. C.
 FLOE ELIZABETH BINGHAM Boone, N. C.



GENE J. BINGHAM Boone, N. C.
 MARY MARTHA BINGHAM Sugar Grove, N. C.
 ANNERL BIVINS Hickory, N. C.



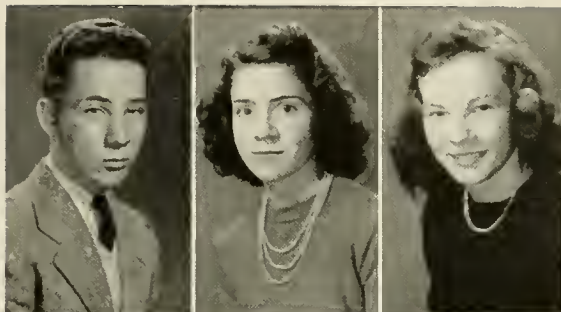
REBEKAH BOONE Boone, N. C.
 ALENE GREY BOWEN King, N. C.
 RUBY MAE BOWEN King, N. C.

SOPHOMORES

SAM JAMES BROOKSHIRE Taylorsville, N. C.

JEWELL B. BROWN Moravian Falls, N. C.

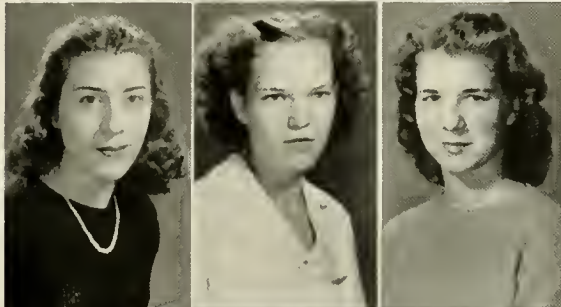
JANICE EARLE BUIE Salisbury, N. C.



ELIZABETH ANN BUSBY Hickory, N. C.

LOIS CHARLENE CAMPBELL .. Taylorsville, N. C.

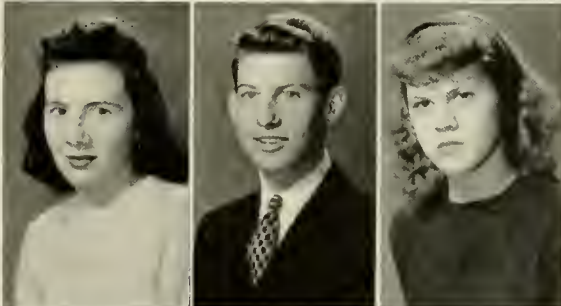
MADGE ELIZABETH CARPENTER Durham, N. C.



MILDRED CARPENTER Bostic, N. C.

WILLIAM L. CARPENTER Rutherfordton, N. C.

HELEN FRANCES CAUDILL Boone, N. C.



DORIS CLINE Kernersville, N. C.

ETHELENE M. COCKRAM Leaksville, N. C.

MARGARET COLE Forest City, N. C.



ANNA FAYE COUNTS Honaker, Va.

HANNAH ELIZABETH CRAVEN Boone, N. C.

ROBERTA BLACKBURN CRITCHER Boone, N. C.



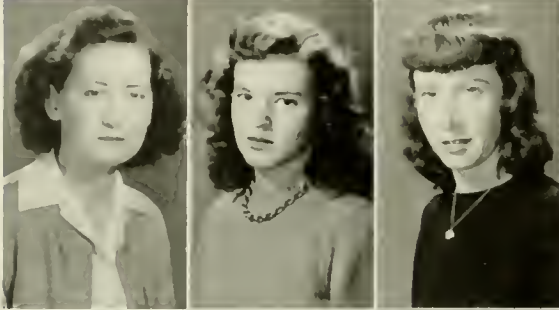
SOPHOMORES



JOY DELLINGER McAdenville, N. C.

DOROTHY JUNE DINKINS Yadkinville, N. C.

ZOLA GREY DIXON Yadkinville, N. C.



MARY ELLEN EARP Taylorsville, N. C.

BETTY JEAN ELMORE Shelby, N. C.

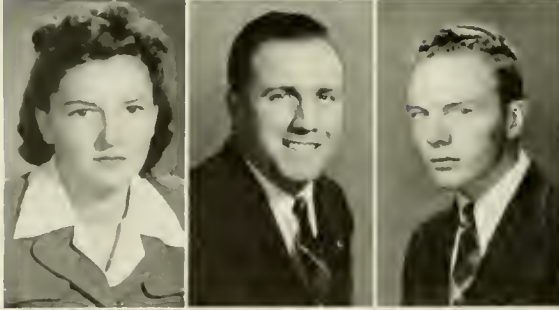
MARY MAXINE ERWIN Elk Park, N. C.



FRANCIS ESSIC Cana, N. C.

BETTY JEAN FARTHING Boone, N. C.

MARY NELL FARTHING Sugar Grove, N. C.



MARGARET FERGUSON Clyde, N. C.

JOHN FLETCHER Chester, Penn.

ROSCOE DENNIS FRANKLIN Sparta, N. C.



RUTH GOLDING Charlotte, N. C.

JOYCE E. GRAGG Boone, N. C.

HAROLD GREICO Adams Center, N. Y.

SOPHOMORES

TED SMITH HAGAMAN Boone, N. C.

ANNA FAYE HARDIN Maxton, N. C.

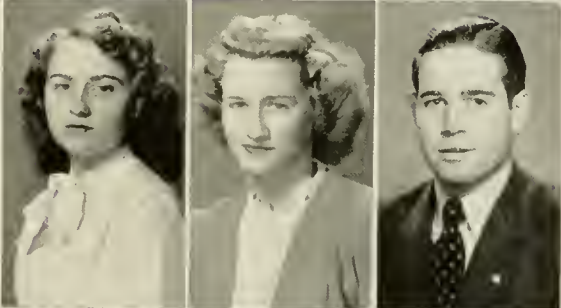
VIOLET NAOMI HARRELL Gastonia, N. C.



ERMA DEAN HEAFNER Lincolnton, N. C.

HELEN MARIANNA HELTON Gastonia, N. C.

GEORGE HEMPHILL Forest City, N. C.



RUTH VAUGHN HESTER Belew Creek, N. C.

JOHN DONALD HIATT Mount Airy, N. C.

GRACE ELIZABETH HOLLIFIELD Bostic, N. C.



JOHN H. HONBARRIER Granite Quarry, N. C.

HELEN ELAINE HOWARD .. Sherrills Ford, N. C.

RITA KATE HOWELL Boone, N. C.



MARY C. HUNTER Bessemer City, N. C.

JESSE HUTCHINSON Abshers, N. C.

VERLIN HUTCHINSON Shady Valley, Tenn.



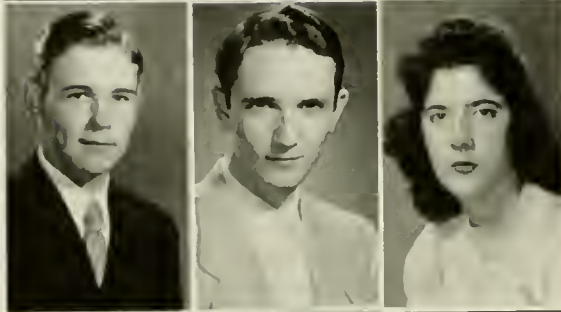
SOPHOMORES



SUE MAE JACKSON Westfield, N. C.

NELLIE FRANCES JARVIS Dobson, N. C.

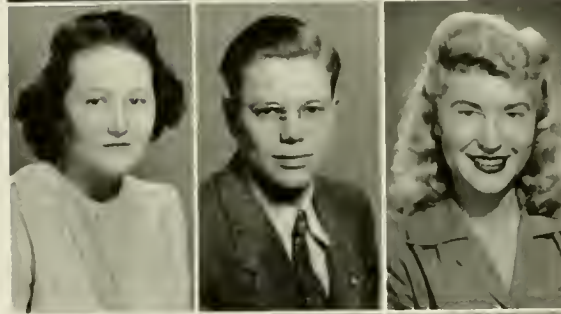
RUBY JOHNSON Mount Airy, N. C.



ALVIN CLAY JOINES Joynes, N. C.

TENNYSON L. JONES Winston-Salem, N. C.

MABEL JO KERLEY Taylorsville, N. C.



MYRTLE ELVA KIKER Peachland, N. C.

JOHN T. KING Boone, N. C.

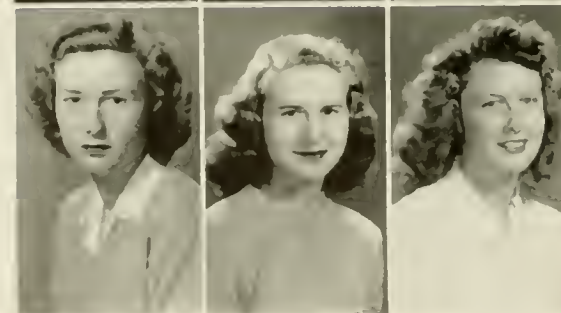
SARA CATHERINE KIRKLEY Jefferson, S. C.



RUBY LEA KISER Kings Mountain, N. C.

LAURA MARGARET LANTZ Lincolnton, N. C.

EUFAULA LEDBETTER Edneyville, N. C.



BETTY SUE LEONARD Lincolnton, N. C.

PEGGY LONG West Jefferson, N. C.

WINIFRED G. LUEKING Bakersville, N. C.

SOPHOMORES

JACK LUTTRELL Shulls Mills, N. C.

EUGENE LYONS Boone, N. C.

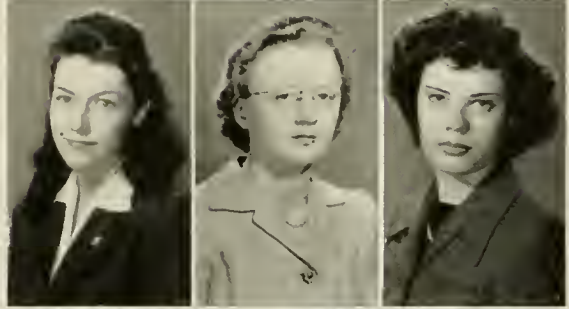
ELFRETA McBRAYER Fairview, N. C.



BERNICE E. McCOMBS China Grove, N. C.

LAURA VIRGINIA MARTIN Sandy Ridge, N. C.

ELIZABETH WILSON MEDLIN Polkton, N. C.



LOUISE RODWELL MERONEY Mocksville, N. C.

BEATRICE VELVIA METCALF Mars Hill, N. C.

BLANCHE IMOGENE MOSES Pittsboro, N. C.



LAURA ELIZABETH MUNDY Morganton, N. C.

ESSIE CORNELIA NORRIS Boone, N. C.

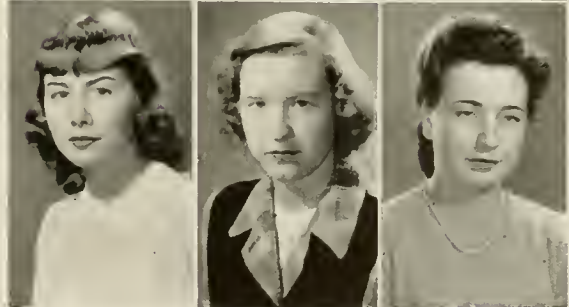
LILLIE EDITH ODOM .. Boone, N. C.



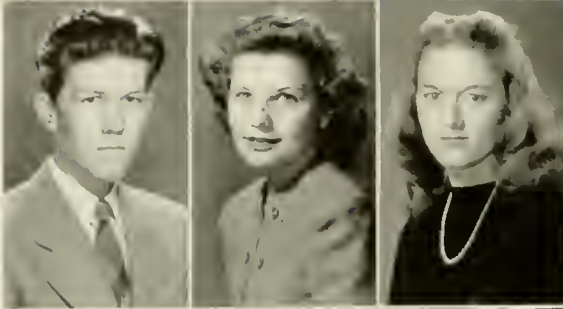
RUBY ELEENE OSBORNE Shady Valley, Tenn.

JOYCE PATTON Jonesboro, N. C.

MARY LOU RANKIN Greensboro, N. C.



SOPHOMORES



ROBERT ANDERSON REID Statesville, N. C.

BETTY LOU RHYNE Lincolnton, N. C.

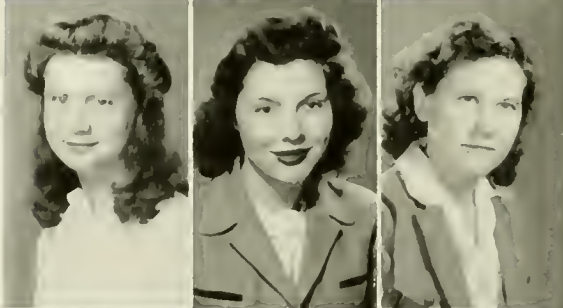
BETTY JO ROBERTSON Statesville, N. C.



MARY JEAN SENTELL Marion, N. C.

GRACE E. SHERWOOD Sugar Grove, N. C.

HARRIET SHORE Charlotte, N. C.



JEANNE ELEANOR SHULL Valle Crucis, N. C.

BILLIE SMITH Morganton, N. C.

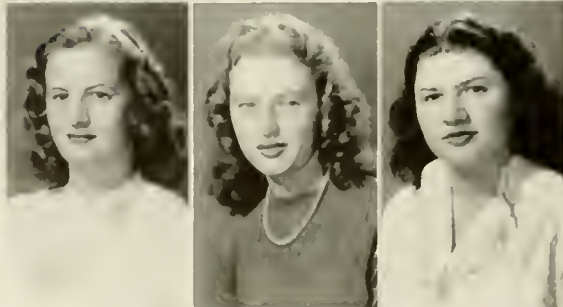
LULA JEANETTE SMITH Clover, S. C.



VERA MAE SMITH Mount Airy, N. C.

AUDREY G. SPARGER Pilot Mountain, N. C.

ELNEDA MAE STANALAND Shallotte, N. C.



EVA MAE STEELMAN Hamptonville, N. C.

LENA RIVERS STRICKLAND Oak Ridge, Tenn.

LOIS THRONEBURG Morganton, N. C.

SOPHOMORES

GEORGE FREMONT TIMMONS Boone, N. C.

MARY SUE TISDALE Old Fort, N. C.

REBECCA GERALDINE TRINKS Marion, N. C.

MILDRED VIRGINIA TUNNELL Boone, N. C.

LEONARD ELTON VANNOY Fleetwood, N. C.

MILDRED C. VANNOY Wilkesboro, N. C.

JACK WALKER Marion, N. C.

JAMES WALKER Casar, N. C.

THOMAS WARD Sugar Grove, N. C.

BARBARA ANN WEAVER Statesville, N. C.

BETSY LOU WEBSTER Murphy, N. C.

FLORENCE WEEKS Clinton, N. C.

MARELYN VIVIAN WELSH Lansing, N. C.

LESLIE E. WEY Terre Haute, Ind.

S. B. WHITE, JR. Union Grove, N. C.



SOPHOMORES



ROGER WHITENER Spindale, N. C.

MARGARET O. WINECOFF Kannapolis, N. C.

ANNA FAYE WILLIAMS .. Mountain Park, N. C.



VIRGINIA FERNE WILLIAMS .. New Hope, N. C.

IRENE MILDRED WILSON Creston, N. C.

SHELTON WILSON Boone, N. C.



MARY LOUISE YOUNG Celo, N. C.

JAMES D. BRADFORD Mooresville, N. C.

STANLEY SOUTH Boone, N. C.



FRESHMEN

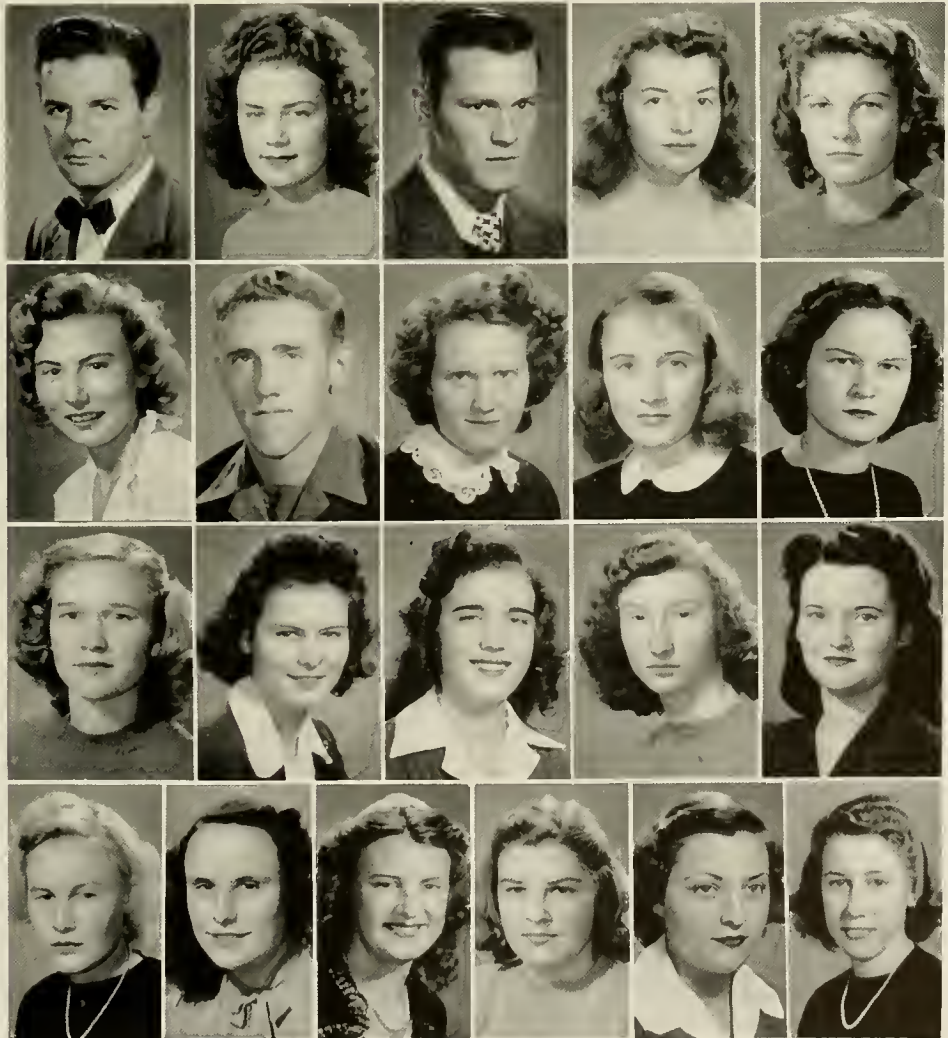


FRESHMAN CLASS OFFICERS

HARLEY JOLLEY	<i>President</i>
CARL FIDLER	<i>Vice-President</i>
ROGER HIATT	<i>Secretary</i>
LEO MAST	<i>Treasurer</i>

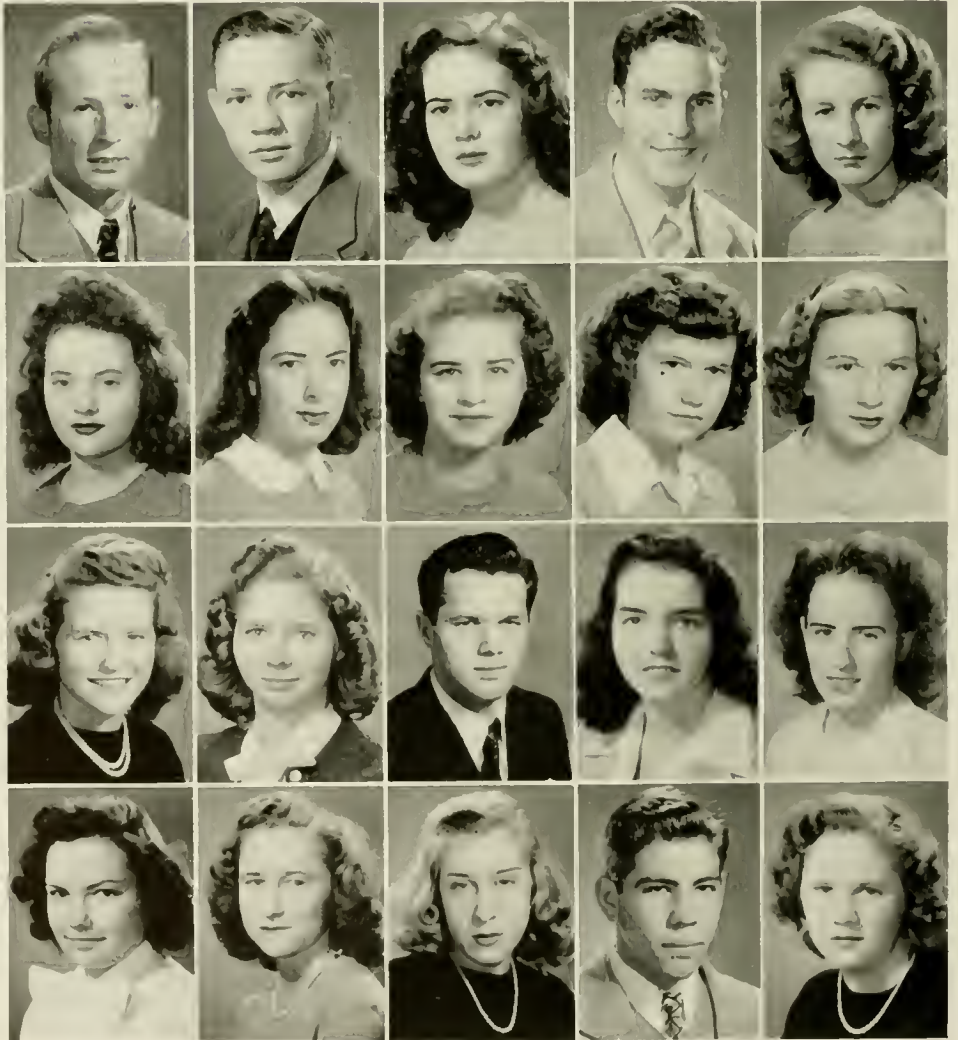
FRESHMEN

HARVEY ADAMS	Winston-Salem, N. C.	AMELIE BAUGUETT	Lomax, N. C.
MARGARET ADKINS	Summerfield, N. C.	GERALDINE BAXTER	Floyd, N. C.
ROBERT ALLEN	Matney, N. C.	MARGARET BEAMER	Mount Airy, N. C.
FRANCES ALLRED	Linwood, N. C.	INEZ BERNHARDT	Salisbury, N. C.
LORENE AMOS	Sandy Ridge, N. C.	ROSEDA BILLINGS	Vilas, N. C.
LOUISE ANDREWS	Pittsboro, N. C.	BETTY C. BINGHAM	Boone, N. C.
NED AUSTIN	Boone, N. C.	BONNIE BELLE BINGHAM	Boone, N. C.
SARAH BAGWELL	Belmont, N. C.	VIOLA BINGHAM	Boone, N. C.
MARY GAGE BARBER	Wilkesboro, N. C.	DOROTHY BLACK	Thomasville, N. C.
MARY FRANCES BARKER	Rhodhiss, N. C.	JANE BLAIR	High Point, N. C.
GWEN BOYCE	Seaford, Del.		



FRESHMEN

TOMMY LEROY BOYETTE	Winston-Salem, N. C.	EVELYN MARIE BROWN	Lexington, N. C.
J. R. BRENDELL, JR.	Boone, N. C.	HOPE BROWN	Moravian Falls, N. C.
RACHEL ANN BRINTLE	Mt. Airy, N. C.	JOHN P. BROWN	Creston, N. C.
BUDDY BROOKS	Booneville, N. C.	NAOMI BROWN	Faith, N. C.
HELEN BROOKS	Sparta, N. C.	FRANCES BUCHANAN	Minneapolis, N. C.
RUBY BROOKS	Glade Valley, N. C.	ANNIE SUE BUNCH	Statesville, N. C.
COZETTE BROOKSHIRE	Taylorsville, N. C.	PEGGY BURRIS	Stanfield, N. C.
BETTY LOU BROWN	Rockwell, N. C.	DORIS BUSBY	Hickory, N. C.
BOBBIE NELL BROWN	Mooresville, N. C.	DOYLE FRANKLIN BYNUM	Lincolnton, N. C.
ELIZABETH ANN BROWN	Stoneville, N. C.	DOROTHY CALTON	Bostic, N. C.



FRESHMEN

CLARA LEE CAMERON Carthage, N. C.
 LUCILLE ELIZABETH CAMERON Fairview, N. C.
 HUGH CAMPBELL Union Grove, N. C.
 JOHN PIERCE CAMPBELL Union Grove, N. C.
 LOUISE CAPSHAW Granite Falls, N. C.
 PEGGY CARDWELL Mayodan, N. C.
 ELSIE LOIS CARVER Washington, N. C.
 ELIZABETH CASTLE Canton, Penn.
 RACHEL CLINARD High Point, N. C.
 FLORA M. COCKERHAM Mountain Park, N. C.

ROY M. COLLINS Francisco, N. C.
 WILLIAM T. COMER Abilene, Texas
 DOROTHY COOKE Grover, N. C.
 FRANCES COOKE Mebane, N. C.
 LILA LUCILLE COOPER Drexel, N. C.
 RICHARD EDWARD CORUM Booneville, N. C.
 BETTY CORNETTE West Jefferson, N. C.
 SARA NELL CRAFT Boone, N. C.
 MYRTLE EVELYN CRAVEN Mooresville, N. C.
 MARTHA CRESS Salisbury, N. C.



FRESHMEN

JERRY CROUCH	Mooresville, N. C.	RUBY EDWARDS	Kannapolis, N. C.
JOHN CROWE, JR.	Ellenboro, N. C.	FRANCES ENGLAND	Marion, N. C.
EVELYN NORINE DALE	Spruce Pine, N. C.	CLYDE EDWARD ERWIN, JR.	Union Mill, N. C.
INEZ DALTON	Edneyville, N. C.	BARBARA SUE FARTHING	Sugar Grove, N. C.
ANGELO D'AMATO	West Haven, Conn.	RHEA R. FARTHING	Boone, N. C.
MARTHA DAY	Boone, N. C.	NORMA FENDER	Sparta, N. C.
RUTH DEYTON	Kannapolis, N. C.	CARL FIDLER	Cornelius, N. C.
MADLINE EDMISTEN	Sugar Grove, N. C.	WILLIS A. FOSTER	Milstead, Ga.
THOMAS EDMISTEN	Boomer, N. C.	LOUISE FRANCIS	Francisco, N. C.
MARY LOU FRAZIER	Greensboro, N. C.		



FRESHMEN

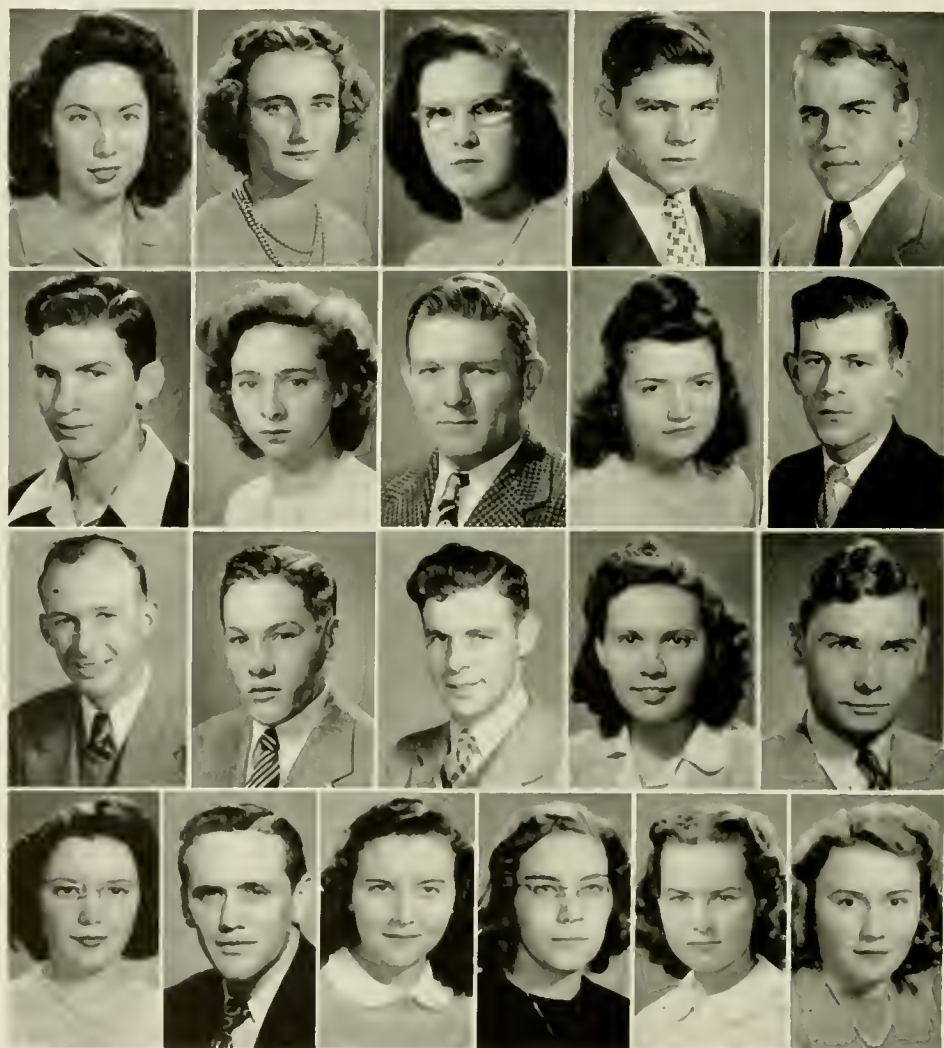
MARY WILKINS GARDNER Shelby, N. C.
 REBECCA ERLINE GARRISON Black Mountain, N. C.
 MARCELLE GAYLE Troy, N. C.
 LESSIE GOODMAN Sparta, N. C.
 CLARA BELL GORDON Pinnacle, N. C.
 JACKIE GORDON Cramerton, N. C.
 ANN GABRIEL GRAHAM Concord, N. C.
 ELLE GRAHAM Sturgills, N. C.
 LA VERNE GREENE Blowing Rock, N. C.
 BETTY COLEEN GREER Zionville, N. C.

BILLIE SUE GREER Fleetwood, N. C.
 RUBY GRIFFITH Newell, N. C.
 RUBY ELIZABETH HARDY Pinnacle, N. C.
 MARGARET HARRILL Forest City, N. C.
 FRED HARRIS Marion, N. C.
 JACK RONDALL HARRIS Lincolnton, N. C.
 MARTHA JANE HARRISON Boone, N. C.
 JACKIE LEE HARWELL Lincolnton, N. C.
 RITA HASKINS Winston-Salem, N. C.
 CAROLYN CLAIRE HOUSER Westfield, N. C.



FRESHMEN

ARLENE HEDGECOCK	High Point, N. C.	DWIGHT N. JEFFERS	Belwood, N. C.
MARY SUE HENDREN	Moravian Falls, N. C.	CHARLES W. JESSUP	Francisco, N. C.
FRANCES HENNESSEE	Granite Falls, N. C.	RALPH JENKINS	Lawndale, N. C.
JAMES ALBERT HIATT	Mount Airy, N. C.	BRICE JOHNSON	East Bend, N. C.
ROGER HIATT	Mount Airy, N. C.	HARLEY JOLLEY	Boomer, N. C.
WILBUR D. HIATT	Mount Airy, N. C.	HELEN JOLLY	Polkville, N. C.
AUDREY HOPE	Grover, N. C.	BILLY JONES	Statesville, N. C.
WILLIAM S. HOPKINS, JR.	Winston-Salem, N. C.	MADGE JONES	Lattimore, N. C.
VIRGINIA HUGHES	Boone, N. C.	ERLINE KEATON	Anderson, S. C.
LE ROY HUNTER	Day Brook, N. C.	WILLENE KESLER	Winston-Salem, N. C.
		ELIZABETH LEE	Wallace, N. C.



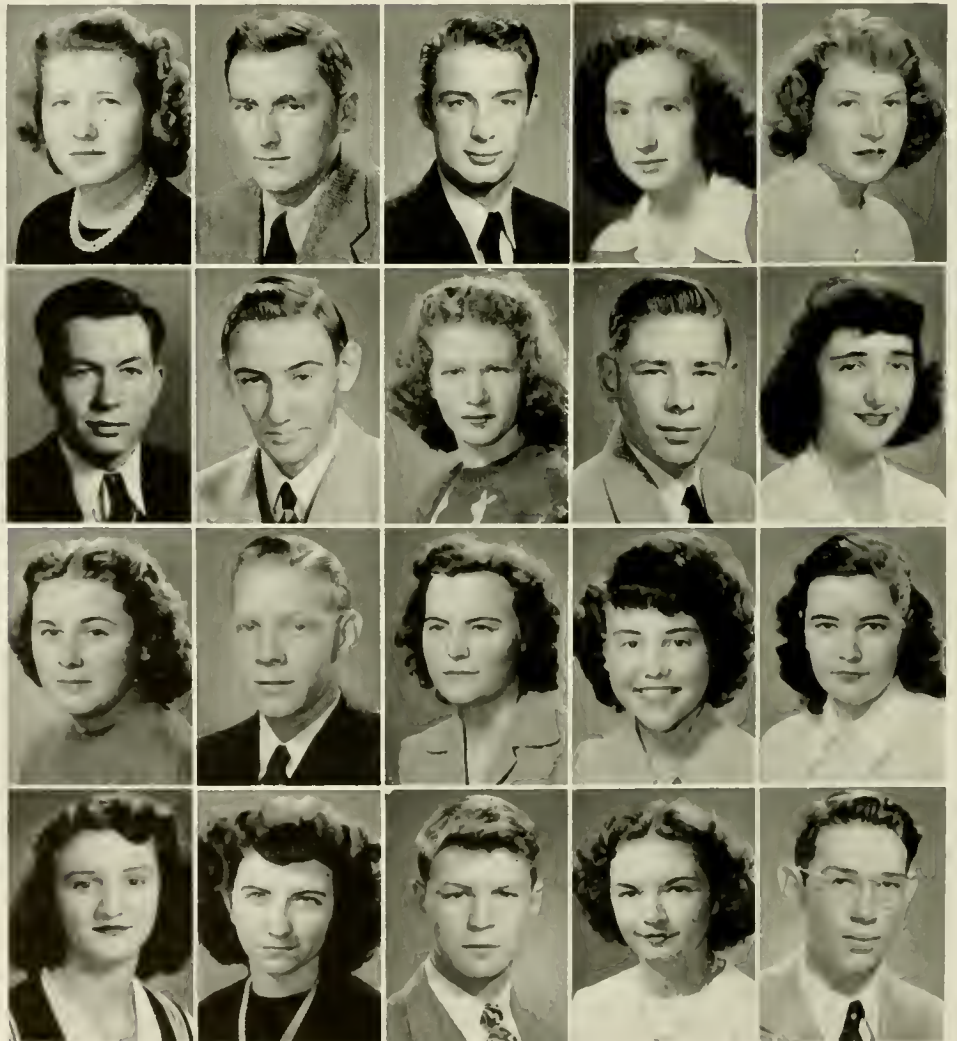
FRESHMEN

PETER JOHN LOSCHIAVO	Ambridge, Penn.	EVERETTE LEO MAST	Sugar Grove, N. C.
JOAN LOVILL	Boone, N. C.	JIMMY MCCONNELL	Boone, N. C.
LEATRICE LYONS	Boone, N. C.	VIRGINIA MCNEILL	West Jefferson, N. C.
ROSE CHRISTINE MABE	Lawsonville, N. C.	ALLAN MILLER	West Jefferson, N. C.
EDITH MAINE	Boone, N. C.	BETTY MINOR	Winston-Salem, N. C.
EDWARD P. MAMMORELLA	Chester, Penn.	LUCILLE MITCHELL	Sparta, N. C.
BEULAH GREY MARION	Pinnacle, N. C.	REBECCA MITCHELL	Cramerton, N. C.
EDITH ELOISE MARLOWE	Marion, N. C.	MARJORIE MITCHEM	Belwood, N. C.
CLYDE JONES MARTIN	Booneville, N. C.	GENE MODLIN	Lincolnton, N. C.
ELIZABETH MARTIN	Booneville, N. C.	JEANNE MOORE	Lexington, N. C.



FRESHMEN

LILLIAN MOORE	Wallace, N. C.	JUELLA PARDUE	Roaring River, N. C.
VINCENT MORRIS, JR.	Stanly, N. C.	LUTHER STEPHEN PARKER	Ellenboro, N. C.
JAMES T. MURDOCK	Statesville, N. C.	CAROLYN EDITH PARSONS	Berg, N. C.
VIRGINIA THURLENE MURRAY	Marion, N. C.	JEAN PERRYMAN	Lexington, N. C.
MARGARET ALMA NELSON	Waynesville, N. C.	ELIZABETH PIHARR	Wilkesboro, N. C.
DANIEL NEW	McCormick, S. C.	IMOGENE PHILLIPS	Tolliver, N. C.
T. W. OWENS, JR.	Rutherfordton, N. C.	BETTY JO PLYLER	Monroe, N. C.
DELSIE ELIZABETH PACK	Mount Airy, N. C.	CONRAD D. PUCKETT, JR.	Huntersville, N. C.
JACK ALLISON PAGE	Salisbury, N. C.	MILDRED RAMSEY	Bakersville, N. C.
BETTY JEAN PARDUE	Elkin, N. C.	CHARLES RANDALL, JR.	Lincolnton, N. C.



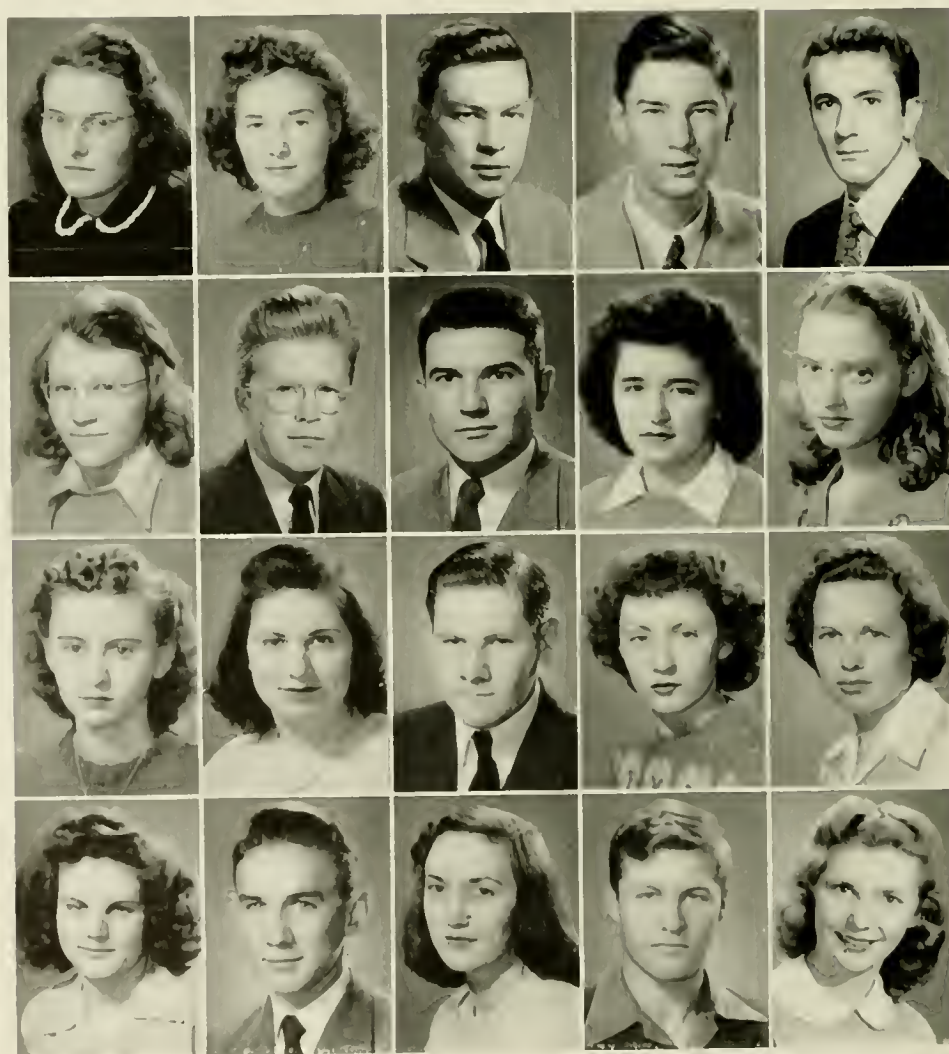
FRESHMEN

ZANA M. RARY	Jonesville, N. C.	JOSEPHINE ROBBINS	Blowing Rock, N. C.
BOBBIE GENE RAY	Newland, N. C.	MERRITT ROBINSON	Burnsville, N. C.
TEXIE REDDING	Ronda, N. C.	MOZELLE RODGERS	Thomasville, N. C.
ASA L. REESE, JR.	Reese, N. C.	BRUCE ROGERS	Mount Airy, N. C.
FAYE VERNA RHODES	North Wilkesboro, N. C.	MELVIN RUGGLES	Chester, Penn.
MRS. MALISSA RICHARDSON	Boone, N. C.	EDWYNA LEE RUSSELL	Drexel, N. C.
REX RICHARDSON	Lexington, N. C.	MARY KATHRYN RUSSELL	Kannapolis, N. C.
SARAH LYNN RIVES	Jonesboro, N. C.	FRED WILLIAM SCOTT	Booneville, N. C.
DORIS LEE ROBERTS	Shelby, N. C.	ROBBIE KATHLEEN SESSOMS	White Oak, N. C.
DOROTHY MARIE ROBERTS	Shelby, N. C.	CLARA MAE SHEPPARD	Sugar Grove, N. C.



FRESHMEN

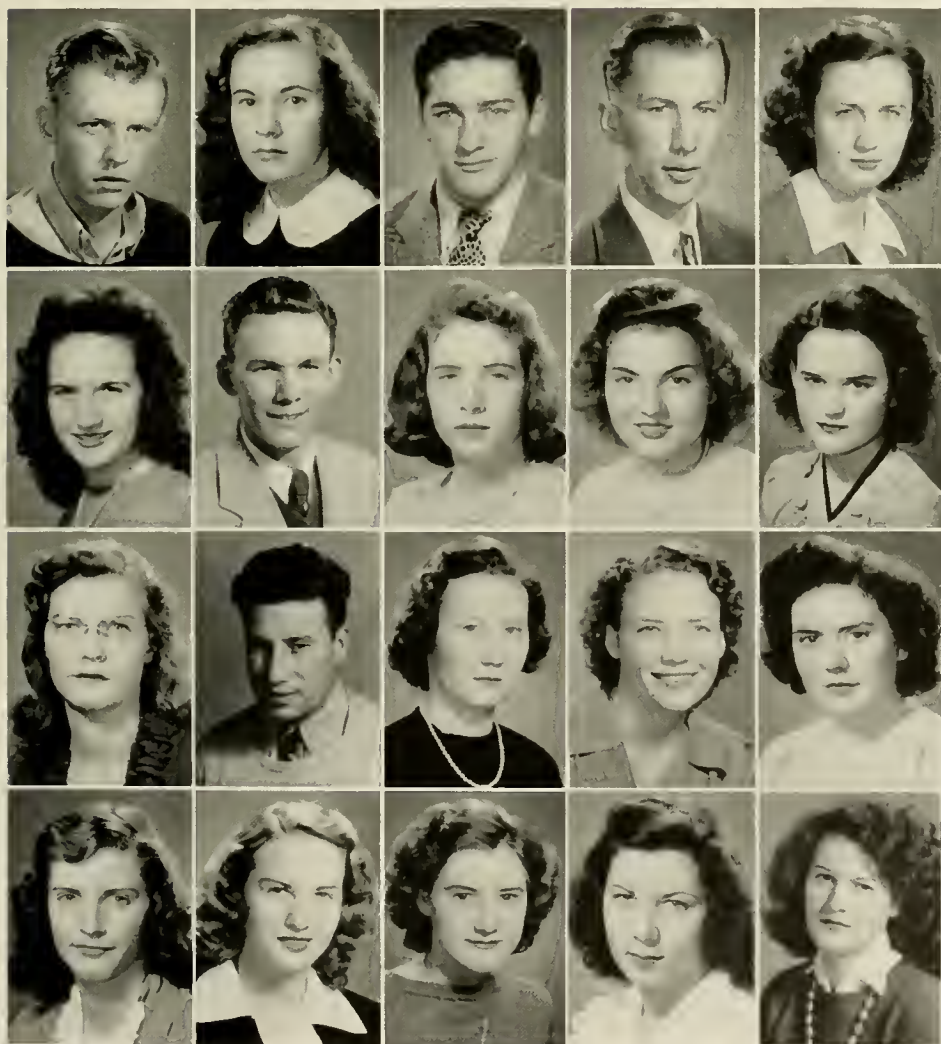
IZORIA TOY SHEPPARD	Sandy Ridge, N. C.	SARAH CATHERINE STOKES	Sugar Grove, N. C.
VIRGINIA SHUFORD	Ellenboro, N. C.	KATHERINE SWANNER	Washington, N. C.
DALLAS REECE SHUGART	Jonesville, N. C.	CARLTON SWIFT	Boone, N. C.
JAMES HARDING SISKE	Pleasant Garden, N. C.	MARY JANE TAIT	Boone, N. C.
CHARLES R. SMITH	Statesville, N. C.	HELEN HUDSON TALLENT	Charlotte, N. C.
RITA LOUISE SMITH	Charlotte, N. C.	CLEONA MAE TAYLOR	Westfield, N. C.
RAYMOND SPAUGH	Winston-Salem, N. C.	LYNN TEMPLETON	Boone, N. C.
BRITT STEELMAN	Wilkesboro, N. C.	LOUISE TIPPETT	Salisbury, N. C.
CELESTE STEPHENS	Creston, N. C.	EDWIN NOSKER TROUTMAN	Boone, N. C.
EDNA STEWART	Charlotte, N. C.	RACHEL ANN VANCE	Boone, N. C.



FRESHMEN

KYLE VANNOY West Jefferson, N. C.
 LUCILLE ADELINE VERNON Sandy Ridge, N. C.
 HARRY FRANCIS VILLEC Riverside, N. J.
 GEORGE VON OLSEN Wilmington, N. C.
 PAULINE WAGONER Roaring River, N. C.
 RUBY WALKER Charlotte, N. C.
 JAMES M. WAUGH Greensboro, N. C.
 SARA FRANCES WEAST Mount Ulla, N. C.
 MARJORIE WEATHERS Shelby, N. C.
 ANNA LEE WEAVER Brandon, N. C.

MILDRED WHITESIDE Lake Lure, N. C.
 LEE WILLIS Wing, N. C.
 VERA LOUISE WICKER Hickory, N. C.
 MILDRED WICKER Sanford, N. C.
 CAROLYN WILLIAMS New Hope, N. C.
 EMMA JEAN WILSON Boone, N. C.
 MARY KATHRYN WILSON Boone, N. C.
 RUTHEL MARGARET WILSON Apple Grove, N. C.
 NANCY YORK Jonesboro, N. C.
 VIRGINIA B. YOUNG Minneapolis, N. C.



A T H L E T I C S

Memories of cheers, of groans,
of battles won and lost,
and how we played the
game



ETICS





BOYS' "A" CLUB

OFFICERS

S. B. WHITE, JR. *President*
 TOM BOYETTE *Vice-President*
 TED HAGAMAN *Secretary*
 JESSE HUTCHINSON *Treasurer*
 EDDIE ADELMAN *Sergeant at Arms*
 HARVEY ADAMS *Chaplain*

Supreme Court

JACK WALKER, JACK HARWELL
 ANGELO D'AMATO
 J. C. KEETER, BOB ALLEN

MEMBERS

DOYLE BYNUM	JIMMY REESE
OBED DAY	HAROLD SHOEMAKER
BILL HOPKINS	BRITT STEELMAN
FRED HARRIS	WORTH SWEET
PETE LOSCHIAVO	GEORGE WATTS





FRANCIS HOOVER
Couch

FOOTBALL RESULTS

Appalachian.....	7	Milligan	26
Appalachian.....	7	Davidson	7
Appalachian.....	7	Milligan	9
Appalachian.....	7	Oak Ridge M.P.'s	27
Appalachian.....	12	High Point.....	13
Appalachian.....	7	Guilford	6
Appalachian.....	0	Catawba	55
Appalachian	13	High Point.....	31





D'AMATO *Back*



BRENDEL *Guard*



ADELMAN *Back*



HARWELL *End*



COLLINS *End*



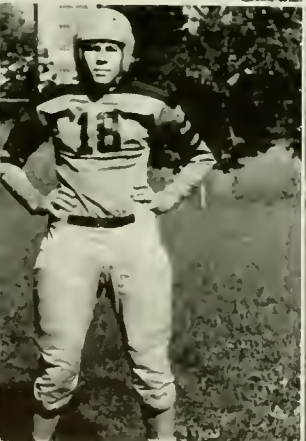
REESE *Back*



WHITE *Back*



WALKER *End*



BYNUM *Guard*



ALLEN *Back*



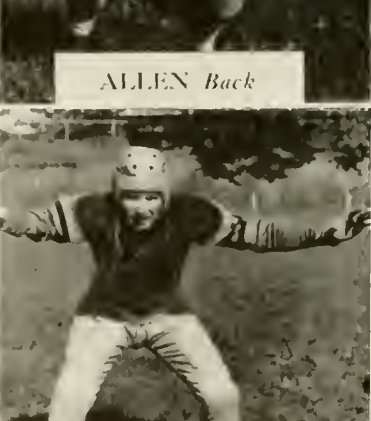
STEELMAN *Back*



HUTCHISON *Tackle*



ASHBURN *Back*



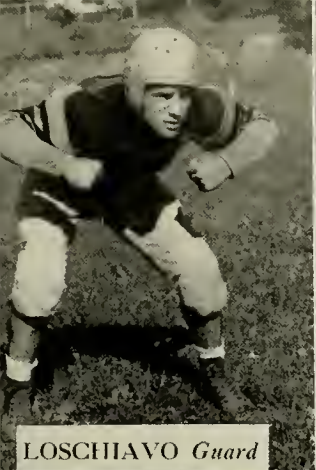
BOYETTE *Guard*



FARTHING *Back*



VILLEC *Back*



LOSCHIAVO *Guard*



HIATT *Back*



SHOEMAKER *End*



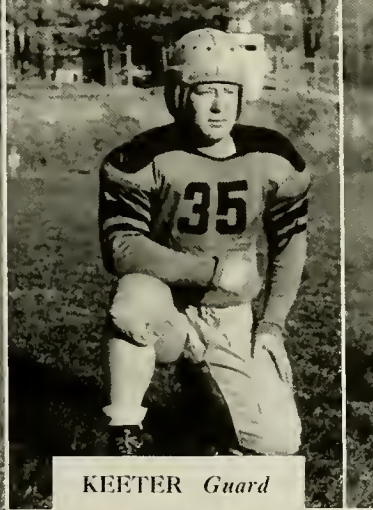
FRANKLIN *Guard*



SPAUGH *Center*



HOPKINS *Tackle*



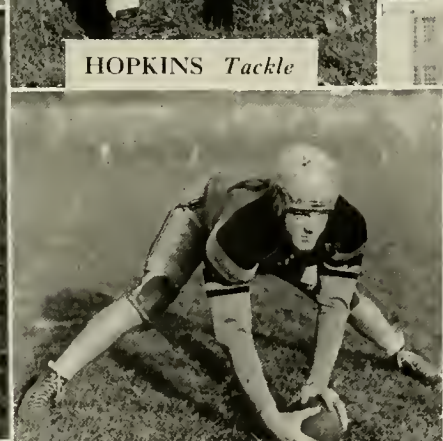
KEETER *Guard*



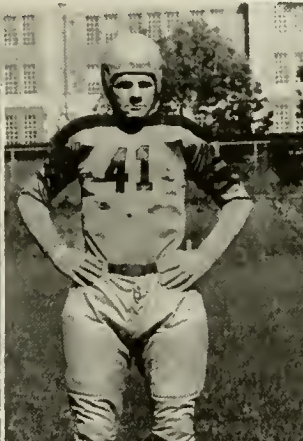
CORUM *Tackle*



LYONS *Tackle*



RICHARDSON *Center*



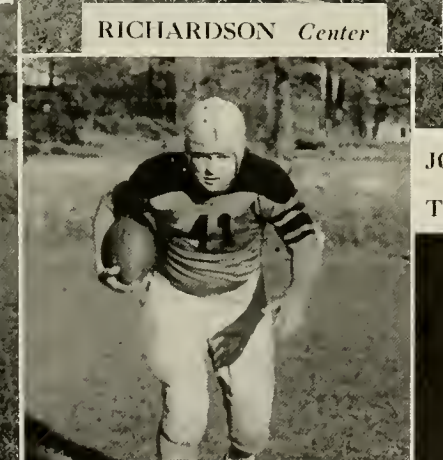
ADAMS *Tackle*



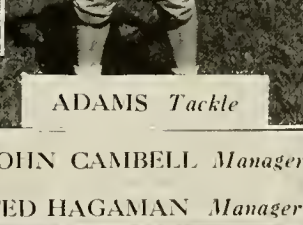
DONAHOO *Back*



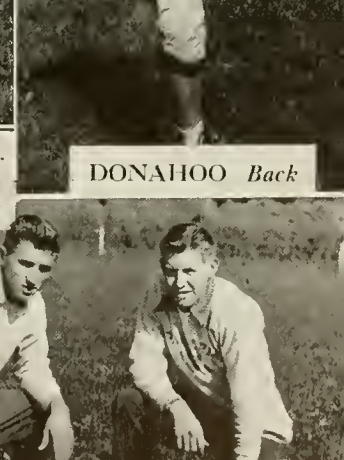
AYERS *End*



HARRIS *Back*



JOHN CAMBELL *Manager*
TED HAGAMAN *Manager*



BASKETBALL SCORES



FRANCIS HOOVER
Coach

Appalachian	64	Thomasville Liens	42
Appalachian	44	Boonville Stars	20
Appalachian	43	Boonville Stars	25
Appalachian	34	Milligan	38
Appalachian	50	Elon	51
Appalachian	47	High Point	54
Appalachian	54	Thomasville Lions	27
Appalachian	58	East Tennessee	55
Appalachian	43	Western Carolina	38
Appalachian	51	Catawba	43
Appalachian	23	Guilford	28
Appalachian	57	King	20
Appalachian	46	Milligan	47
Appalachian	64	Lenoir Rhyne	42
Appalachian	39	Moore General Hospital	37
Appalachian	35	Western Carolina	45
Appalachian	43	Catawba	39
Appalachian	39	King	27
Appalachian	68	Guilford	54
Appalachian	39	Davidson	52
Appalachian	70	Lenoir Rhyne	45
Appalachian	50	Elon	42
Appalachian	52	High Point	63

"A" SQUAD



First Row, left to right: Wey, Allen, D'Amato, Hagaman, White, Reese, Adelman.
Second Row, left to right: Hiatt, Shoemaker, Ayers, Brooks, Collins, Fidler, Shugart.



FIDLER *Guard*



REESE *Guard*



ALLEN *Forward*



HAGAMAN *Guard*



HIATT *Forward*



WHITE *Forward*



BROOKS *Center*



COLLINS *Forward*



ADELMAN *Forward*



D'AMATO *Guard*



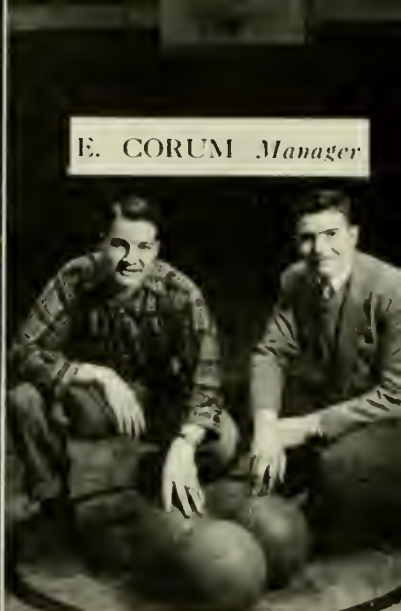
WEY *Forward*



SHUGART *Center*



SHOEMAKER *Center*



E. CORUM *Manager*

B. STEELMAN *Manager*



"B" SQUAD

First Row, Left to Right: CAMPBELL, BOYETTE, MARTIN.

Second Row, Left to Right: BYNUM, SCOTT, HUTCHISON, WALKER, HARRIS.

WRESTLING SQUAD



Front Row, left to right: ABERNATHY, EDMISTEN, SPARKS, ODOM.
 Second Row, left to right: COACH WATKINS, BRENNEN, REESE, VILLEC, DAY.
 Third Row, left to right: ASSISTANT MANAGER MORRIS, TIMMONS, ROBINSON,
 LOSCHIAVO, RICHARDSON, RAY, MAST, HEAD MANAGER McCANN.

WRESTLING SCORES

Carolina	22	Appalachian	8
Auburn	22	Appalachian	8
Georgia Tech	24	Appalachian	8
Duke	28	Appalachian	0
Auburn	11½	Appalachian	22½

WEIGHTS

121	Odom	145	Daye
121	Edminsten	155	Sparks
128	Abernathy	165	Reese
136	Robinson	175	Villec
Hvt.	Loschiavo		



MAX SPARKS



RALPH ABERNETHY



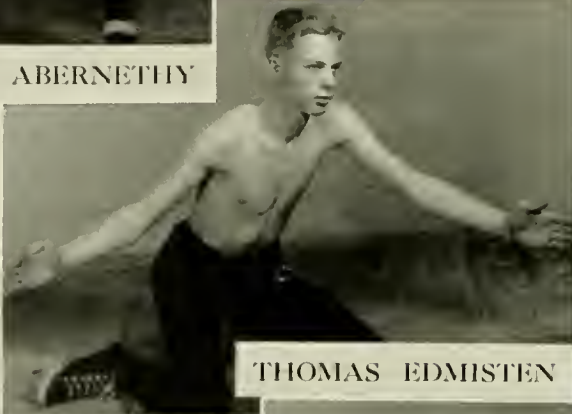
OBED DAY



GEORGE TIMMONS



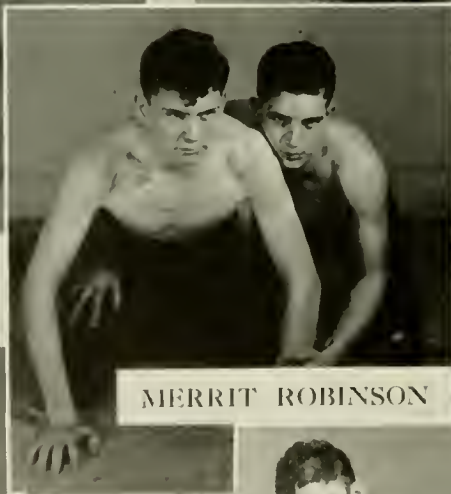
HARRY VILLEG



THOMAS EDMISTEN



DAVID ODOM



MERRITT ROBINSON



PETE LOSCHAVO



JIMMIE REESE



BILL BRANNON



REX RICHARDSON



W. A. A.

OFFICERS

- ELLEN PHILBECK *President*
- EVELYN RAY *Vice-President*
- KATHLEEN MOORE *Secretary*
- HELEN SMITH *Treasurer*
- BETTY GABRIEL *Intramural Manager*
- DOROTHY MOORE *Gold Captain*
- MARY SMITH *Black Captain*
- GAIL CLAY *Sponsor*

ATHLETICS FOR WOMEN



W. A. A.

GOLDS



BLACKS



MEMBERS

Mary Ann Barrett
Bernice Beaver
Ruby Bowen
Betty Lou Brown
Jean Brown
Merle Butler
Elizabeth Cameron
Elsie Carver
Helen Caudill
Freda Cline
Frances Cook
Ada Dellinger
June Dinkins
Ruby Edwards
Betty Jean Farthing
Irene Fowler

Louise Francis
Betty Gabriel
Pearl Gold
Clara Belle Gordon
Pollyanna Gordon
Joyce Gragg
Doris Harrison
Mildred Hill
Barbara Kopley
Sue Leonard
Bernice McCombs
Evelyn McNeely
Mildred Martin
Gloria Matkins
Martha Miller
Lucille Mitchell

Dorothy Moore
Kathleen Moore
Helen Gray Moxely
Delsie Paek
Joyce Patton
Ellen Philbeck
Mary Lou Rankin
Evelyn Ray
Mary Ellis Reese
Emmogene Reynolds
Sara Rives
Doris Roberts
Dorothy Roberts
Mozelle Rogers
Doris Smith
Helen Smith

Mary Smith
Patsy Smith
Rita Smith
Mary Ida Steele
Edna Steward
Helen Tallent
Lois Thronburg
Rebecca Tomlinson
Louise Upchurch
Ruby Walker
Sarah Frances West
Dorothy Whisnant
Deva Wilcox
Bertha Willis
Margaret Winecoff
Jean Wolfe
Nancy York

GIRLS' "A" CLUB

MISS GAIL CLAY
Sponsor

Betty Gabriel
Dorothy Moore
Ellen Philbeck
Emmogene Reynolds
Mary Smith
Louise Upchurch



FLYING FISH

OFFICERS

DOROTHY MOORE *President*
EVELYN RAY *Secretary and Treasurer*
MISS BETTY SUE STONE *Sponsor*

Freda Cline
Betty Gabriel
Nellie Gabriel
Sue Leonard
Evelyn McNeely
Mildred Martin
Gloria Matkins
Dorothy Moore
Ellen Philbeck
Evelyn Ray
Mary Reece
Emmogene Reynolds
Jean Sentell
Mary Smith
Helen Smith
Louise Upchurch





Honorary Softball Varsity

Emmogene Reynolds	Rebecca Tomlinson
Mary Smith	Helen Watson
Ellen Philbeck	Frances Cook
Doris Harrison	Ruby Walker
Helen Tallent	Doris Smith
Jean Brown	Betty Gabriel

Honorary Speedball Varsity

Jo Lovill	Evelyn Ray
Ellen Philbeck	Helen Smith
Mary Smith	Frances Cook
Mary Ann Barrett	Ruby Walker
Louise Upchurch	Marian Cobb
Sue Leonard	Betty Gabriel
Kathleen Moore	Jean Brown



Honorary Basketball Varsity

Delsa Pack	Freda Cline
Bertha Willis	Ellen Philbeck
Frances Cook	Betty Gabriel
Dorothy Moore	Elizabeth Cameron
Pearl Gold	Ruby Walker
Kathleen Moore	Marion Cobb

Honorary Volleyball Varsity

Elizabeth Cameron	Ruby Walker
Gloria Matkins	June D'inken
Ellen Philbeck	Frances Cook
Louise Upchurch	Bertha Willis
Joyce Patton	Mildred Hill
Marion Cobb	Dorothy Moore
Emmogene Reynolds	Jean Brown
Merle Butler	Betty Gabriel

INTRAMURAL WINNERS



TENNIS DOUBLES Ellen Philbeck
Betty Gabriel

BADMINTON DOUBLES Ellen Philbeck
Betty Gabriel

TENNIS SINGLES Ellen Philbeck

BADMINTON SINGLES .. Ellen Philbeck

HORSESHOE Marion Cobb

PING-PONG SINGLES Gloria Grill

CHEERLEADERS

A SQUAD

Nellie Gabriel
Mary Reese
Mildred Martin
Marion Cobb
Patsy Smith
Jim Cobb



B SQUAD

Lois Eller
Mary Kathryn Wilson
Nancy York
Helen Caudill
Jack Harris

ACTIV

Memories of
discussions
of elections
of socials
of plays and
pleasant
associates



IT I E S



VERNICIAN LITERARY SOCIETY

MEMBERS

Joyce Berry Benfield
Hattie Lee Brannon
Elizabeth Brown
Evelyn Brown
Eloise Buff
Doris Busby
Doris Cline
Margaret Cole
Harriet Crutchfield
Martha Day
Rachel DeLancey
Lois Eller
Mary Evelyn Ellis
Nancy Forrester
Irene Fowler
Rosalyn Francis
Eleanor Greene
Gloria Grill
Doris Harrison
Frances Hennessee
Mary Katherine Hunter
Nellie Jarvis
Madge Jones
Barbara Kepley



OFFICERS

MARGARET LINEBERGER	<i>President</i>
ROSALYN FRANCIS	<i>Vice-President</i>
MARGARET COLE	<i>Secretary</i>
JACQUELINE LOWERY	<i>Treasurer</i>
MRS. GRUBBS	<i>Sponsor</i>

Myrtle Kiker
Sara Kirkley
Betty Sue Leonard
Margaret Lineberger
Jacqueline Lowry
Beatrice Metcalfe
June McBee
Nancy McLean
Helen Moore
Jeanne Moore
Emogene Moses
Eleene Osborne
Alta Louise Ponder
Mickey Ramsey
Zana Rary
Doris Roberts

Dorothy Roberts
Grace Sherwood
Mary Ida Steele
Eva Mae Steelman
Lena Strickland
Betty Jean Smith
Billie Smith
Becky Tomlinson
Mary Sue Tisdale
Jerry Trinks
Magdalene Turpin
Rachel Vance
Betsy Webster
Dorothy Whisnant
Ferne Williams
Jean Wilson





FORUM CLUB

MEMBERS

- Betsy Barrett
- Mary Ann Barrett
- Joyce Erockshire
- Charlene Campbell
- Betty Cline
- Zola Gray Dixon
- Carrie Lee Farthing
- Betty Gabriel
- Betty Jean Griffin
- Gloria Matkins
- Guy McCann
- Silver Miller
- Curtis Murray
- Lou Rhyne
- Bonita Rominger
- Grace Sherwood
- Audrey Smith
- Patsy Smith

OFFICERS

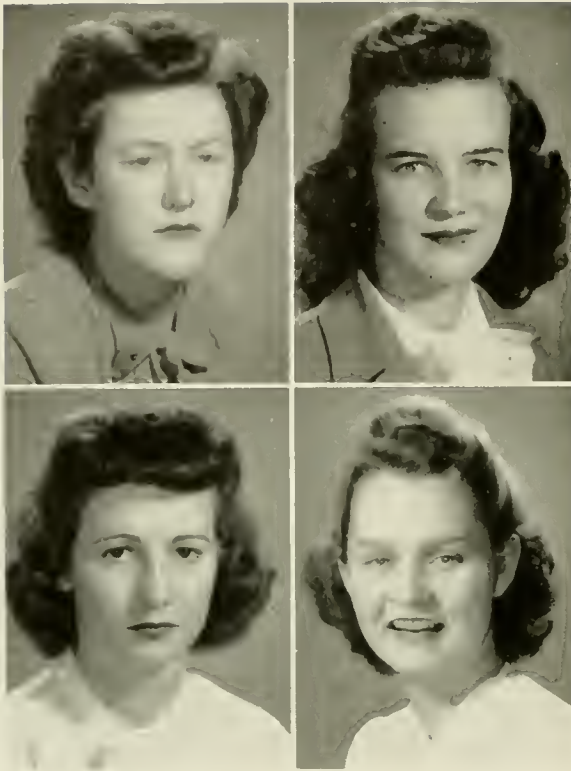
FIRST HALF YEAR

- | | |
|-------------------------|----------------|
| MARY SMITH | President |
| ELLEN GRAY BURRIS | Vice-President |
| LILLIAN GRIFFITH | Secretary |
| MADELEINE SMOOT | Treasurer |
| W. M. GRUBBS | Sponsor |

SECOND HALF YEAR

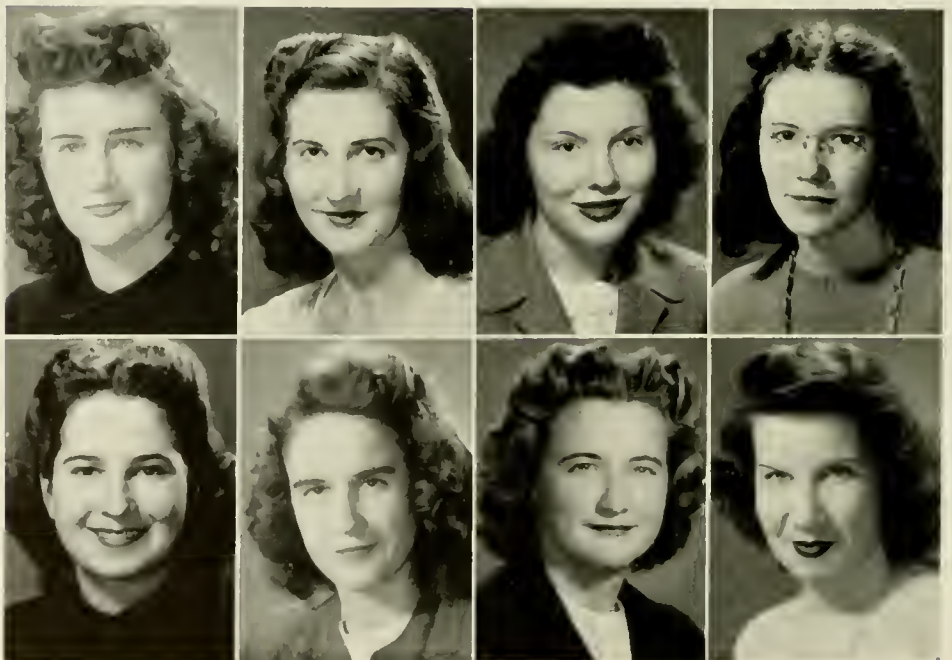
- | | |
|-------------------------|----------------|
| MILDRED EATON | President |
| MARGARET LANTZ | Vice-President |
| ELLEN GRAY BURRIS | Secretary |
| IMOGENE MOSES | Treasurer |





Y. W. C. A. CABINET

- PEGGY ROGERS *President*
 BETTY JEAN GRIFFIN *Vice-President*
 FRANCES SIERRILL *Secretary*
 ROSADA BOWMAN *Treasurer*
 NELLIE GABRIEL *Program Chairman*
 MAGDALENE TURPIN *Chapel Chairman*
 BILLIE SMITH *Chorister*
 ZOLA GREY DIXON *Pianist*
 JOYCE BROOKSHIRE *Social Service*
 ELLEN PHILBECK *Social Chairman*
 BETTY GABRIEL *Membership*
 MARGARET LINEBERGER *Publicity*
 MRS. G. P. EGGERS *Sponsor*



Y. W. C. A.

Minnie Lou Allen
Frances Allred
Lorene Amos
Linda Atkins
Wilhelmina Ayers
Sarah Bagwell
Mary Frances Barker
Mary Gage Barber
Inez Barnhardt
Bernice Beaver
Joyce Benfield
Ruby Bowen
Alene Bowen
Rosada Bowman
Dorothy Black
Joyce Brookshire
Naomi Brown
Naomi E. Brown
Hope Brown
Evelyn Brown
Betty Sue Brown
Cozette Brookshire
Jean Brown
Elizabeth Ann Brown
Jewell Brown
Lena Brown
Ruth Brittain
Annie Sue Bunch
Peggy Burris
Rosena Burton
Merle Butler
Mary B. Buchanan
Charlene Campbell
Betty Cantrell
Peggy Cardwell
Elsie Carver
Mildred Carpenter
Louise Capshaw
Clara Cameron
Madge Carpenter
Freda Grubbs Cline
Doris Cline
Marian Cobb
Clara Cooke
Margaret Cockerham
Melba Cornett
Jerry Crouch
Martha Cress
Alma Crowder
Evelyn Dale
Ada Dellinger
Joy Dellinger
Zola Grey Dixon
Mildred Eaton
Tillie Eaker
Madaline Edminston
Ruby Edwards
Helen Elkins
Lois Eller
Mary Ellen Earp
Frances England
Mary Nell Farthing
Amanda Ferebee

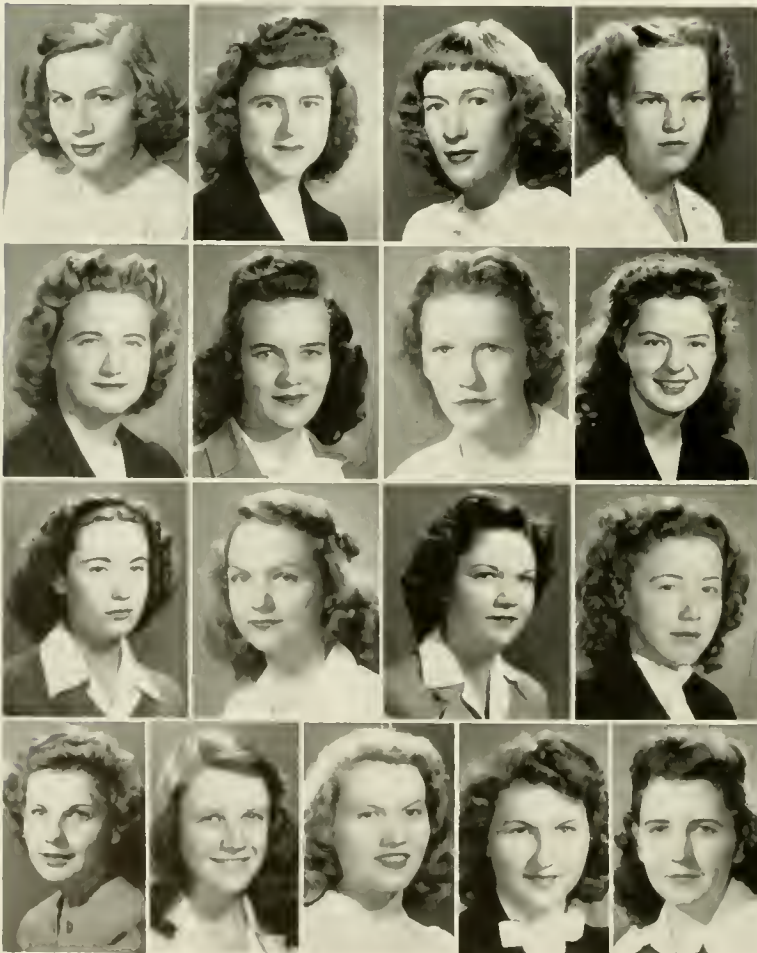
Louise Francis
Rosalyn Francis
Beatrice Froneberger
Betty Gabriel
Nellie Garbriel
Mary Gardner
Pearl Gold
Gloria Grill
Betty Jean Griffin
Lillian Griffith
Mary Jean Gross
Eleanor Greene
Jackie Gordon
Ruby Griffith
Clara Belle Gordon
Julia Grey
Doris Harrison
Margaret Harrill
Joyce Hayes
Violet Harrill
Erma Dean Heafner
Ruth Hester
Mary Sue Hendron
Frances Hennessee
Mildred Hill
Grace Hollifield
Audrey Hope
Helen Howard
Mary Catherine Hunter
Mildred Ingram
Frances Jackson
Sue Mae Jackson
Brice Johnson
Ruby Johnson
Earline Keaton
Mary Sue Keaton
Willene Kesler
Myrtle Kiker
Ruby Lea Kiser
Margaret Lantz
Jacqueline Lowery
Sue Leonard
Elizabeth Lee
Margaret Lineberger
Martha Linney
Helen Martin
Mildred Martin
Marion Martin
Laura Martin
Gloria Matkins
Christine Mabe
Libby Martin
Rebecca Mitchell
Lucille Mitchem
Martha Miller
Betty Minor
Virginia McNeil
Lillian Moore
Dot Moore
Kathleen Moore
Jeanne Moore
Thurlene Murray
Eleene Osborne
Betty Pardue

Jean Perryman
Elizabeth Pharr
Ellen Philbeck
Mary Jo Phylar
Alta Louise Ponder
Una Perry Propst
Lou Rankin
Zana Rary
Emma Jean Reynolds
Sarah Reeves
Mary Elis Reese
June Renfrow
Mary Reese
Lou Rhyne
Faye Rhodes
Rebekah Rivers
Bonita Rominger
Mozelle Rogers
Betty Jo Robertson
Peggy Rogers
Doris Roberts
Dorothy Roberts
Elizabeth Scism
Oma Shew
Frances Sherrill
Harriet Shore
Izoria Sheppard
Elizabeth Smith
Rita Smith
Jeannette Smith
Mary Smith
Billy Smith
Patsy Smith
Helen Smith
Helen Sossaman
Audrey Sparger
Eva Mae Steelman
Helen Tallent
Claudia Thorpe
Sue Tisdale
Anne Truitt
Maedalene Turpin
Catherine Vannoy
Lucille Vernon
Marjorie Weathers
Barbara Weaver
Annie Lee Weaver
Betsy Webster
Sarah Frances Weast
Dorothy Whisnant
Mildred Whitesides
Arlene Williams
Fern Williams
Carolyn Williams
Deva Wilcox
Mildred Wicker
Bertha Faye Willis
Vera Workman
Jean Wolfe
Madge Wood
Edith York
Nancy York
Mary Louise Young

INTERNATIONAL RELATIONS CLUB

OFFICERS

CURTIS MURRAY *President*
 JOYCE BROOKSHIRE *Vice-President*
 CARRIE L. FARTHING *Recording Secretary*
 MARY SMITH ... *Corresponding Secretary*
 MILDRED EATON *Treasurer*
 DR. D. J. WHITENER *Sponsor*



ROLL

Betsy Barrett
 Ellen Gray Burris
 Betty Cline
 Charline Campbell
 Betty Gabriel
 Betty Jean Griffin
 Lillian Griffith
 Ruth Golding
 Margaret Lantz
 Gloria Matkins
 Imogene Moses
 Bonita Rominger
 Lou Rhyne
 Patsy Rose Smith
 Audrey Smith
 Lorraine Simpson
 Madeleine Smoot



STUDENT GOVERNMENT ASSOCIATION

OFFICERS

- BETTY GABRIEL *President*
 FREDA CLINE *Vice-President*
 PATSY SMITH *Secretary*
 MAGDALENE TURPIN *Assistant Secretary*
 DOROTHY MOORE *Treasurer*

Senior Representatives:

- Freda Cline Dorothy Moore
 Gloria Matkins Ellen Philbeck
 Mary Smith

Sophomore Representatives:

- Alvin Joines Lou Rhyne

Junior Representatives:

- Lillian Griffith Patsy Smith
 Emmogene Reynolds Magdalene Turpin

Freshman Representatives:

- Roger Hiatt Harley Jolly



Y. M. C. A.

OFFICERS

FIRST QUARTER

DOYLE PRUITT *President*
JESSE HUTCHINSON *Vice-President*
ALVIN C. JOINES *Secretary-Treasurer*
DENNIS FRANKLIN *Social Chairman*
PAUL SOWELL *Chaplain*
G. L. SAWYER *Sponsor*

SECOND QUARTER

JAMES DRY *President*
PAUL SOWELL *Vice-President*
ALVIN C. JOINES *Secretary-Treasurer*
LEWIS JENKINS *Social Chairman*
WORTH SWEET *Chaplain*
G. L. SAWYER *Sponsor*

MEMBERS

Palmer Blair
John Pierce Campbell
William L. Carpenter
Edward Corum
Oren Counts
John Crowe, Jr.
William Crummett
James Dry
Dennis Franklin

John D. Hiatt
Wilbur Hiatt
William Harrill
Jesse Hutchinson
Lewis Jenkins
Charles Jessup
Alvin C. Joines
Joe P. Kelly
Guy McCann
Gorman Michael

Curtis Murray
William Nolan
Stephen Parker
Doyle Pruitt
Charles Randall
Rex Richardson
Worth Sweet
Leonard Vannoy
George Van Oesen





MIXED CHORUS

MISS VIRGINIA WARY *Director*

Nannette Banner	Magdalene Turpin	Roger Hiatt
Billie Smith	Martha Cress	John Hiatt
Eloise Buff	Margaret Cole	Stanley South
Madge Jones	Nellie Jarvis	A. J. Smith
Zana Rary	Rachel DeLancy	Palmer Blair
Mary Evelyn Ellis	Rachel Ann Vance	Edwin Troutman
Vera Workman	Jack Luttrell	Tennyson Jones
Virginia Isaacs	James Sisk	Leo Mast
Jean Wilson		William Carpenter



GIRLS' CHORUS

A. J. SMITH *Director*

Rebekah Boone	June McBee	Helen Sossaman
Ruth Brittain	Betty Pardue	Claudia Thorpe
Jean Brown	Alta Louise Ponder	Louise Tippett
Madge Carpenter	Zana Rary	Geraldine Trinks
Faye Counts	June Renfrow	Mildred Tunnell
Ruby Dancy	Peggy Rogers	Marjorie Weathers
Grace Hollifield	Grace Sherwood	Betsy Webster
Margaret Lantz	Mary Ida Steele	Ann Williams



COLLEGE
BAND

OFFICERS

PALMER BLAIR	<i>President</i>
AGNES PRESTON	<i>Vice-President</i>
EDWIN TROUTMAN	<i>Secretary-Treasurer</i>
GORDON NASH	<i>Director</i>



DANCE
ORCHESTRA

OFFICERS

A. J. SMITH	<i>President</i>
GENE BINGHAM, PALMER BLAIR	<i>Business Managers</i>



AMERICAN CHILDHOOD EDUCATION

OFFICERS

- ROSALYN FRANCIS *President*
 CLARA COOK *First Vice-President*
 ROSADA BOWMAN .. *Second Vice-President*
 NELLIE GABRIEL *Secretary*
 MRS. WILSON *Sponsor*

MEMBERS

- Joyce Benfield
 Helen Bruton
 Rosena Burton
 Rachel DeLancey
 Mary N. Farthing
 Erma D. Heafner

- Mayo Huneycutt
 Frances Jackson
 Brice Johnson
 Barbara Kepley
 Nell R. Lewis

- Jacqueline Lowery
 Gloria Matkins
 Nancy McLean
 Mickey Ramsey
 June Renfrow
 Harriet Shore





B. S. U. COUNCIL

PEGGY ROGERS	<i>President</i>	ELLEN G. BURRIS	<i>Training Union Representative</i>
RUTH BRITTAIN	<i>Enlistment Vice-President</i>	ARLENE WILLIAMS	<i>Mission Forum President</i>
GRACE TUCKER	<i>Social Vice-President</i>	JESSE HUTHINSON	<i>Boys Representative</i>
DORIS HARRISON	<i>Devotional Vice-President</i>	MARY LILLIAN WILCOX	<i>Town Representative</i>
ZOLA GREY DIXON	<i>Secretary</i>	AUDREY SMITH	<i>Bible Study Leader</i>
RUBY NELL OWENS	<i>Treasurer</i>	VIRGINIA ISAACS	<i>Music Director</i>
JEWELL BROWN	<i>Editor of Trail</i>	MARY JEAN GROSE	<i>Extension Director</i>
DORIS CLINE	<i>Magazine Representative</i>	EDITH YORK	<i>Librarian</i>
MADELEINE SMOOT	<i>Sunday School Representative</i>	MADGE MAXFIELD	<i>Publicity Director</i>
WINONA KOCH	<i>Student Secretary</i>		



METHODIST YOUTH FELLOWSHIP

BETTY JEAN GRIFFIN	<i>President</i>
JACK WHITENER	<i>Vice-President</i>
REBEKAH BOONE	<i>Secretary-Treasurer</i>



LUTHERAN STUDENT UNION

RUBY LEE KISER *President*
 MARGARET LANTZ *Vice-President*
 DOROTHY WHISNANT *Secretary-Treasurer*



MARCIA GABRIEL *President*
 LILLIAN GRIFFITH *Vice-President*
 BETTY ELLIS *Secretary-Treasurer*

Westminster Fellowship



CARRIE LEE FARTHING	<i>President</i>
REBEKAH RIVERS	<i>Vice-President</i>
DORIS CLINE	<i>Secretary</i>
ESSIE NORRIS	<i>Treasurer</i>
MISS CRADDOCK	<i>Sponsor</i>

LOS PICAROS ESPANOLÉS



LE CERCLE FRANCAIS

OFFICERS	
INEZ CONNOR, REBEKAH RIVERS	<i>Co-Presidents</i>
CARRIE LEE FARTHING	<i>Vice-President</i>
NELLIE JARVIS	<i>Secretary-Treasurer</i>
ELIZABETH CRADDOCK	<i>Sponsor</i>



WHITE HALL CLUB

EVELYN BROWN *President*



LOVILL CLUB

OFFICERS

POLLYANNA GORDON *President*

JUELLA PARDUE *Vice-President*



OFFICERS

JUANITA YOUNG	<i>President</i>
JOYCE BROOKSHIRE	<i>Vice-President</i>
IMOGENE MOSES	<i>Secretary-Treasurer</i>
GERALDINE TRINKS	<i>Reporter</i>
FAYE COUNTS	<i>Sergeant at Arms</i>
MISS STONE	<i>Sponsor</i>

HOME
ECONOMICS
CLUB



WHO'S WHO

Ellen Philbeck	A. J. Smith	Nellie Gabriel
Betty Gabriel	Dorothy Lee Smith	Rebekah Rivers
Freda Grubbs Cline	Gloria Matkins	Patsy Smith
Peggy Rogers	Curtis Murray	Kathleen Moore
Betty Jean Griffin	Mary E. Smith	Joyce Brookshire

BATON CLUB



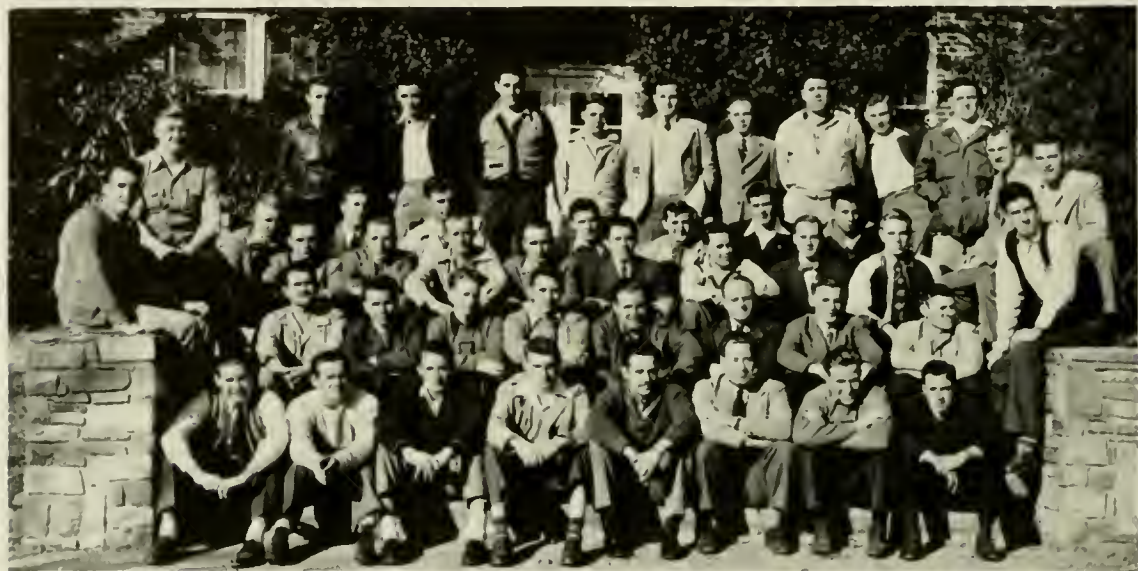
OFFICERS

JUNE MCBEE	<i>President</i>	ELEENE OSBORNE	<i>Reporter</i>
MAYO HUNEYCUTT	<i>Vice-President</i>	EVELYN RAY	<i>Leader</i>
EMMOGENE REYNOLDS	<i>Secretary-Treasurer</i>	E. E. GAREEE	<i>Sponsor</i>

MEMBERS

Peggy Burris	Winifred Luking	Emmogene Reynolds
Betty Busby	June McBee	Lou Rhyne
Evelyn Dale	Helen Moxley	Doris Roberts
Martha Day	Margaret Nelson	Dorothy Roberts
Mary Elizabeth Guy	Elcene Osborne	Elizabeth Shaw
Erma Deen Heafner	Mildred Ramsey	Helen Smith
Mayo Huneycutt	Betty Ray	Lena Strickland
Margaret Lantz	Evelyn Ray	Eleanor Vance

APPALACHIAN VETERANS' ASSOCIATION



Robert Abee
 Ralph Abernathy
 Eddie Adleman
 James M. Anderson, Jr.
 Doyle Ayers
 Allen Bandy
 Gene Bingham
 James Bradford
 William Patrick Brennan
 F. H. Brooks, Jr.
 Glenn Bridges
 John P. Brown
 Robert Burleson
 James Calloway
 Hugh Campbell
 Ben E. Carson
 William Christensen
 James Cobb
 Ben Cole
 Joe Comer
 William Comer
 Wayne Caudill
 Oren Counts
 E. D. Daney

Obed Day
 Andy Dickerson
 James Dry
 Stacy Eggers
 Francis Essie
 Leonard Eury
 Carl Fidler
 Jack Fletcher
 Wilbur Franklin
 W. C. Garvey
 Ed Gomedela
 Rexter B. Gordon
 George Greene
 Walter E. Greene
 Ceeil Hackney
 Charlie W. Hall
 William D. Harrill
 Charles Harris
 Fred Harris
 Kent Haynes
 George Hemphill
 John Hiatt
 James M. Hill

John Honbarrier
 Claud Hoyle
 Le Roy Hunter
 Verlin Hutehison
 Dwight Jeffers
 Ralph Jenkins
 Harley E. Jolly
 Billy Ray Jones
 Howard Jones
 Lewis Joyee
 J. C. Keeter
 Claude Kennedy
 John King
 Tom Lewis
 Donald Littman
 Edward Mammorella
 Gorman Michael
 Allan Miller
 Jimmy Miller
 Gene Modlin
 James Murdock
 William F. Nolan
 David Odom

Earl Penick
 Robert Philbeck
 Walter Ragan
 William B. Rankin
 Asa Reese
 James Reese
 James E. Rhodes
 Bruce Rogers
 Melvin Ruggles
 Harold Rummage
 Roger Sheppard
 D. R. Shugart
 Charles Robert Smith
 Stanley South
 Max Sparks
 George Timmons
 Thomas Timmons
 Thomas Ward
 George Watts
 James Waugh
 Leslie E. Wey
 Roger Whitener
 Lee Willis



OFFICERS

MILDRED CARPENTER	<i>President</i>
GLORIA GRILL	<i>Vice-President</i>
EVA MAE STEELMAN	<i>Secretary</i>
TED HAGAMAN	<i>Treasurer</i>
JERRY CROUCH	<i>Reporter</i>
JOYCE HAYES	<i>Membership Chairman</i>
MISS HESS	<i>Sponsor</i>

BUSINESS
CLUB



OFFICERS

WORTH SWEET	<i>President</i>
PAUL SOWELL	<i>Vice-President</i>
GUY McCANN	<i>Secretary</i>
BETTY CLINE	<i>Treasurer</i>
W. M. GRUBBS	<i>Sponsor</i>

HISTORY
MAJORS'
CLUB



FUTURE TEACHERS

- BETTY JEAN GRIFFIN *President*
 NELLIE GABRIEL *Vice-President*
 FRANCES SHERRILL *Secretary*
 BETTY GABRIEL *Treasurer*
 MADELEINE SMOOT *Program Chairman*
 CLARA COOKE *Librarian*
 GLORIA MATKINS, ELLEN PHILPECK *Social Chairman*
 MR. WEY *Sponsor*

PLAYCRAFTERS



OFFICERS

- BONITA ROMINGER *First Chairman*
 HAL SHOEMAKER *Second Chairman*
 BETSY WEBSTER *Secretary-Treasurer*
 CLARA RUTLEDGE, GLORIA GRILL *Editors of Playbill*
 LOAL BENBOW *Stage Manager*
 BOBBY GENE RAY *Technician*
 A. ANTONAKAS *Director*

ROLL

Loal Benbow, Betty Lou Brown, Cozette Brookshire, Paul Campbell, Inez Connor, Martha Cress, Lois Eller, Rhea Farthing, Gloria Grill, Jackie Gordon, Madge Jones, Bernita Hughes, Erma D. Heafner, Christine Mabe, Betty Jo Plyler, Alta Louise Ponder, Conrad Puckett, Betty Ray, Bobby Gene Ray, Sarah Lynn Rives, Bonita Rominger, Clara Rutledge, Hal Shoemaker, Jimmy Siske, Catherine Stokes, Betty Webster, Deva Wilcox, Bertha Willis, Frances Yarborough, Nancy York.

PLAYCRAFTERS





PUBLICATIONS



ELLEN PHILBECK
Editor-in-Chief



CURTIS MURRAY
Business Manager



PEGGY ROGERS
Associate Editor



BETTY JEAN GRIFFIN
Assistant Business Manager



THE RHODODENDRON STAFF

REBEKAH RIVERS *Photographic Editor*
 MADELEINE SMOOT *Managing Editor*
 MARGARET LINEBERGER *Art Editor*
 TOM BOYETTE *Sports Editor*
 KATHLEEN MOORE *Sports Editor*
 ELLEN BURRIS *Senior Class Editor*
 LILLIAN GRIFFITH *Junior Class Editor*

TED HAGAMAN *Sophomore Class Editor*
 HARVEY ADAMS *Freshman Class Editor*
 PAUL SOWELL *Advertising Manager*
 WILHELMINA AYERS *Typist*
 BONITA ROMINGER *Typist*
 AMANDA FEREBEE *Circulation Manager*
 PROF. VANCE HOWELL *Sponsor*



GLORIA MYRKINS
Editor-in-Chief



NELLIE GABRIEL
Business Manager



REBEKAH RIVERS
Associate Editor



PATSY SMITH
Assistant Business Manager

THE APPALACHEE
Published Each Week by Students of Appalachian State University
BOONE, NORTH CAROLINA, FRIDAY, JAN. 15, 1946
No. 2-136

THE APPALACHEE
Published Each Week by Students of Appalachian State University
BOONE, NORTH CAROLINA, FRIDAY, JAN. 15, 1946
No. 2-136

PALACHIAN
Students of Appalachian State University
BOONE, NORTH CAROLINA, FRIDAY, JAN. 15, 1946
No. 2-136

THE APPALACHEE
Published Each Week by Students of Appalachian State University
BOONE, NORTH CAROLINA, FRIDAY, JAN. 15, 1946
No. 2-136

THE APPALACHEE
Published Each Week by Students of Appalachian State University
BOONE, NORTH CAROLINA, FRIDAY, JAN. 15, 1946
No. 2-136

From Those In Service

APPALACHIAN
Teachers College
Dr. W. A. Smith
Principal
At Home

Thanksgiving Dance Climate Holiday Season
Sponsored by History Majors Club

Playwright Plans Are Released
Antonia...

Members of 1946 Who's Who
Nine Degrees Awarded to Mid-Graduates

Lena P...
Final Plans Graduate S...

THE APPALACHEE
Published Each Week by Students of Appalachian State University
BOONE, NORTH CAROLINA, FRIDAY, JAN. 15, 1946
No. 2-136

THE APPALACHEE
Published Each Week by Students of Appalachian State University
BOONE, NORTH CAROLINA, FRIDAY, JAN. 15, 1946
No. 2-136

THE APPALACHEE
Published Each Week by Students of Appalachian State University
BOONE, NORTH CAROLINA, FRIDAY, JAN. 15, 1946
No. 2-136





APPALACHIAN STAFF

EDITORIAL STAFF

INEZ CONNOR, MARGARET LANTZ *News Editors*
 MADELEINE SMOOT *Feature Editor*
 MILDRED EATON *Feature Editor*
 BETTY JEAN GRIFFIN *Feature Writer*
 BETSY WEBSTER *Feature Writer*
 GLORIA GRILL *Typist*
 THELMA FARTHING *Typist*

Reporters: Erma Deen Heafner, Rebekah Boone, Peggy Rogers, Mary Smith, Evelyn McNeely, Lou Rhyne, Nellie Jarvis, Annie Sue Bunch, Robbie Sessoms, Rachel Ann Vance, Doris Cline.

SPORTS STAFF

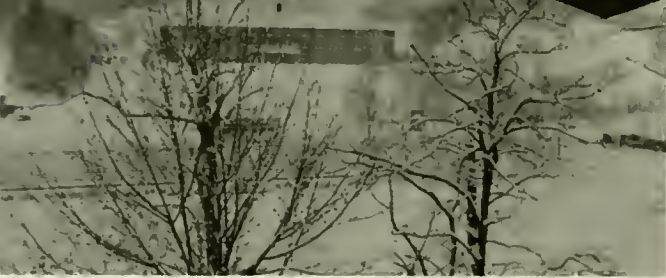
ELLEN PHILBECK *Editor*
 BETTY GABRIEL *Assistant Editor*
 EVELYN RAY *Reporter*
 TED HAGAMAN *Reporter*
 GUY McCANN *Reporter*

BUSINESS STAFF

VIVIAN CLINE *Circulation Manager*
Circulation Assistants
 Jean Sentell, Bill Harrell, Cozette Brookshire
 DR. D. J. WHITENER *Faculty Sponsor*

F E A T

*May Day - Sponsors
Superlatives - and ads.*



W R E S





Lena Brown May Queen



Mary Reese Maid of Honor

SENIOR ATTENDANTS

Betty Jean Griffin

Rosalyn Francis



MAY DAY ATTENDANTS



JUNIOR ATTENDANTS:

Kathleen Moore

Emma Gene Reynolds

Rebekah Rivers



SOPHOMORE ATTENDANTS:

Lou Rhyne
Ferne Williams

FRESHMAN ATTENDANTS:

Sara Rives
Zana Rary

1946 CAMPUS



Miss Ellen Philbeck
Miss Appalachian



Mr. Worth Sweet
Mr. Appalachian

UPERLATIVES



Miss Betty Gabriel

Most Valuable



Miss Nellie Gabriel

Most Popular

1946 SENIOR



Gloria Watkins

Most Likely to Succeed

Nellie Gabriel

Most Versatile

Betty Gabriel

Best Athlete (Girl)

Jimmie Reece

Best Athlete (Boy)

SUPERLATIVES



Peggy Rogers

Friendliest

Carrie Lee Farthing

Most Intellectual

Mary Reese

Prettiest

A. J. Smith

Most Handsome



RHODODENDRON SPONSORS

Mrs. J. A. Philbeck

ELLEN PHILBECK
Editor

Mrs. Curtis Murray

CURTIS MURRAY
Business Manager



APPALACHIAN
SPONSORS

Mr. L. G. Matkins

GLORIA MATKINS
Editor



Mrs. W. G. Gabriel

NELLIE GABRIEL
Business Manager

STUDENT
GOVERNMENT
SPONSOR

Mrs. Paul L. Gabriel, Sr.

BETTY GABRIEL
President



Y. W. C. A.
SPONSOR

Mrs. J. C. Rogers

PEGGY ROGERS
President



SENIOR CLASS
SPONSOR

H. O. Cline

FREDA CLINE
President



JUNIOR CLASS
SPONSOR

Mrs. Fred G. Hawkins

REBEKAH RIVERS
President





SOPHOMORE CLASS
SPONSOR

Mr. S. B. White, Sr.

S. B. WHITE, JR.
President

FRESHMAN CLASS
SPONSOR

Miss Ruth Broach

HARLEY JOLLEY
President





New style dormitory. . . Don't tell Dr. Rankin. . . Boys, whe-e-e . . . Take me back and try me one more time. . . Speaks for itself. . . Man and wife. . . No comment. . . Bookstore!!! . . . Who's foolin' who. . . Typical annual snapshot. . . Before Spud's time. . . What's in that tree? . . .

STUDENTS AND TEACHERS ARE ALWAYS WELCOME AT

Hunt's Department Store

Two Large Floors of Clothing and Shoes

For the Entire Family

"In the Heart of Boone"



ALWAYS YOUR MONEY'S WORTH

Compliments of

Boone Flower and Gift Shop

*"Flowers for
all occasions"*

Main Street

*"Gifts of
distinction"*

BOONE, N. C.

Compliments of

RAY'S BARBER SHOP

"Good Service Guaranteed"

Under City Meat Market

BOONE, N. C.

BARE'S FAIR STORE

Everything in Clothing and Shoes
for the
College Students and Teachers

WE WELCOME YOU

Mrs. J. L. REESE, *Manager*

Compliments of

DANIEL BOONE SHOE SHOP

CHARLES C. ROGERS, *Owner*

Main Street

BOONE, N. C.

Watauga Hardware Inc.

*Quality Merchandise at
Attractive Prices*



"The Friendly Store"

Main Street

BOONE, N. C.

Compliments of

Craven Furniture Company



J. R. CRAVEN, *Owner*

Main Street

BOONE, N. C.

Compliments of

HI-LAND CLEANERS

"You Must be Satisfied"

Main Street

BOONE, N. C.

Compliments of

R. W. COLVARD

Colvard Tire and Chevrolet Company

Main Street

BOONE, N. C.

Compliments of

**BOONE TIRE AND
BARGAIN STORE**

Phone 152

BOONE, N. C.

DACUS RADIO SHOP

EXPERT RADIO REPAIRING

25 Years Experience

217 Main St.

BOONE, N. C.



Winkler Motor Company

Authorized Sales and Service

BOONE, NORTH CAROLINA

SMITHEY'S DEPT. STORE

DRY GOODS, GROCERIES, FEEDS

POULTRY, GASOLINE AND OILS

Phone 19

"Visit our lunch room"

All Sandwiches 5¢

Coffee Free

Compliments of

CITY BARBER SHOP

BUSINESS APPRECIATED

Main Street

BOONE, N. C.

Opposite Post Office

CAROLINA COMMISSION COMPANY

INCORPORATED



Wholesale

FRESH FRUITS, VEGETABLES
GROCERIES



HICKORY, NORTH CAROLINA

Compliments of

MADDUX ESSO SERVICE

WASHING, GREASING, TIRES,
AND BATTERIES

RECAPPING VULCANIZING

Phone 9103 BOONE, N. C.

Compliments of

WATAUGA DEMOCRAT



ESTABLISHED 1888

Compliments of
B. W. STALLINGS

"Your College Jeweler"

BOONE, N. C.

WATCHES DIAMONDS JEWELRY

SANITARY BARBER SHOP

Always Welcome and
Service Guaranteed

Next to the Gateway Cafe

CRAWFORD—REESE—BINGHAM

BOONE, N. C.

Compliments of

CREST 5-10-25c STORES COMPANY

BOONE, N. C.



*"Where all the little things
are available all the time"*

LYON'S THRIFT SHOP

Bedspreads, Blankets, All
Kinds of Material and
Remnants

MRS. J. S. LYONS, *Owner*

Main Street BOONE, N. C.

ANGEL'S CAFE

"Regular Dinners, Oysters, Large
Steaks and Specialties"

24 HOUR SERVICE

Opposite Bus Station

Depot Street BOONE, N. C.

The ECONOMY STORE

MEN'S, WOMEN'S, CHILDREN'S
SHOES—DRESSES—COATS
MEN'S AND BOYS' CLOTHING
HATS AND NOTIONS

JUNE RUSSELL, *Manager*

Depot Street

BOONE, N. C.

WALKER'S JEWELRY STORE

WATCHES, DIAMONDS, RINGS
AND SCHOOL SUPPLIES

Fine Watch Repairing

A. S. T. C. Students Always
Welcome

Compliments of

FARMERS HARDWARE COMPANY, Inc.



EVERYTHING IN HARDWARE
AND ASSOCIATE LINES



BOONE, NORTH CAROLINA

SWOFFORD'S TIRE STORE

Goodyear Tires, Batteries
And Accessories

BOONE, NORTH CAROLINA

Phone 225J

Main Street

ARTISTIC BEAUTY SALON

"We Make
Loveliness Lovelier"

MRS. E. S. QUALLS, *Owner*

Phone 8

BOONE, N. C.

HOLLAR'S GROCERY

FANCY GROCERIES
NATIVE & WESTERN MEATS
FRESH FRUITS ANYTIME

BOONE, NORTH CAROLINA

GOODMAN DRESS
SHOP

We Specialize in
DRESSES, LINGERIE, HATS,
BAGS AND SPORTSWEAR

MRS. D. C. GOODMAN, *Owner*

APPALACHIAN
THEATRE

Western North Carolina's Finest

BOONE, NORTH CAROLINA

Compliments of

FRANK M. PAYNE, *Gen. Mgr.*

Security Life and
Trust Company

Office Northwestern Bank Bldg.

BOONE, N. C.

*"The sooner you plan your future
the better your future will be."*

BOOKS

LUNCHEONETTE
SCHOOL SUPPLIES

A. S. T. C.
BOOK STORE

STATIONERY—NOVELTIES



OFFICIAL COLLEGE RINGS

THE HOME OF A. S. T. C.
GATEWAY CAFE

"Western Carolina's Best"

BOONE, NORTH CAROLINA

MEET YOUR FRIENDS
AT THE

APPALACHIAN
SODA SHOP

BOONE, NORTH CAROLINA

Compliments of

ECHERD'S BARBER SHOP

It Pays to Look Well

Visit Your Barber Regularly

TAYLORSVILLE, N. C.

Meet Your Friends at

CAROLINA PHARMACY

Prescriptions

Phone 47

BOONE, N. C.

Compliments of

Coca-Cola Bottling Company

+ +

Coca-Cola

OF ASHEVILLE, N. C., HICKORY, N. C.

+ +

BELK-WHITE COMPANY

BOONE, N. C.

★"Remember You Always

Save at

BELK'S"

TOWNSEND'S GROCERY

A Complete Line of Fresh Meats
Fresh Vegetables and Staple
Groceries

Phone 159

BOONE, N. C.

Compliments of
BOONE DRUG STORE

The REXALL Store

Phone 17

G. K. MOOSE, *Owner*

Compliments of

CORNER SHOP

GIFTS—SOUVENIRS

WATCH REPAIRING

G. G. MORETZ, *Owner*

Main Street

BOONE, N. C.

Queen City Trailways

SYMBOLIZES A FRIENDLY ORGANIZATION
DEDICATED TO SERVE THE PEOPLE IN THE CAROLINAS
WITH THE
MOST DEPENDABLE BUS SERVICE POSSIBLE



Queen City Coach Company

(Owner-Operator)

Compliments of

BLUE RIDGE MUSIC Co.

New and Used

PHONOGRAPH RECORDS

ROY KEPLAR, *Owner*

King Street

BOONE, N. C.

CITY MEAT MARKET

FRESH MEATS OF ALL KINDS

Your Patronage Appreciated

Main Street

BOONE, N. C.

MAYFLOWER BEAUTY SHOP

"Your Nearest Hairdressers"

Work done by
expert operators

Phone 32

BOONE, N. C.

Enjoy **PET ICE CREAM**

"A Health Food"

**PET DAIRY PRODUCTS
COMPANY**

JOHNSON CITY, TENNESSEE

Compliments of

Sunbeam Bread

By

**WALDENSIAN BAKING
COMPANY**



VALDESE, N. C.

SMITH'S ESSO STATION

"The Station of Service"

A. R. SMITH, *Owner*

BOONE, N. C.

Compliments of

**PEARCE-YOUNG-
ANGEL CO. INC.**

ASHEVILLE, N. C.



WHOLESALE FOODS

Reins-Sturdivant Funeral Home & Burial Association

Day and Night Ambulance Service

PHONE 24

Appalachian State Teachers College

BOONE, NORTH CAROLINA

DEVOTED EXCLUSIVELY TO TEACHER TRAINING
FOR PUBLIC EDUCATION IN THE SOUTH

+

Specialization In Observation Work

+

FULL SUMMER QUARTER

Patronize Our Advertisers



Just a Bunch. . . On the lookout. . . Altar bound. . . Going someplace. . . All smiles. . . It's a rough life!!! . . . Givin' the orders!! . . . Just posin'. . . Hey, what's this. . . Professor of the future. . . Let's all look at the camera. . . THE END!



