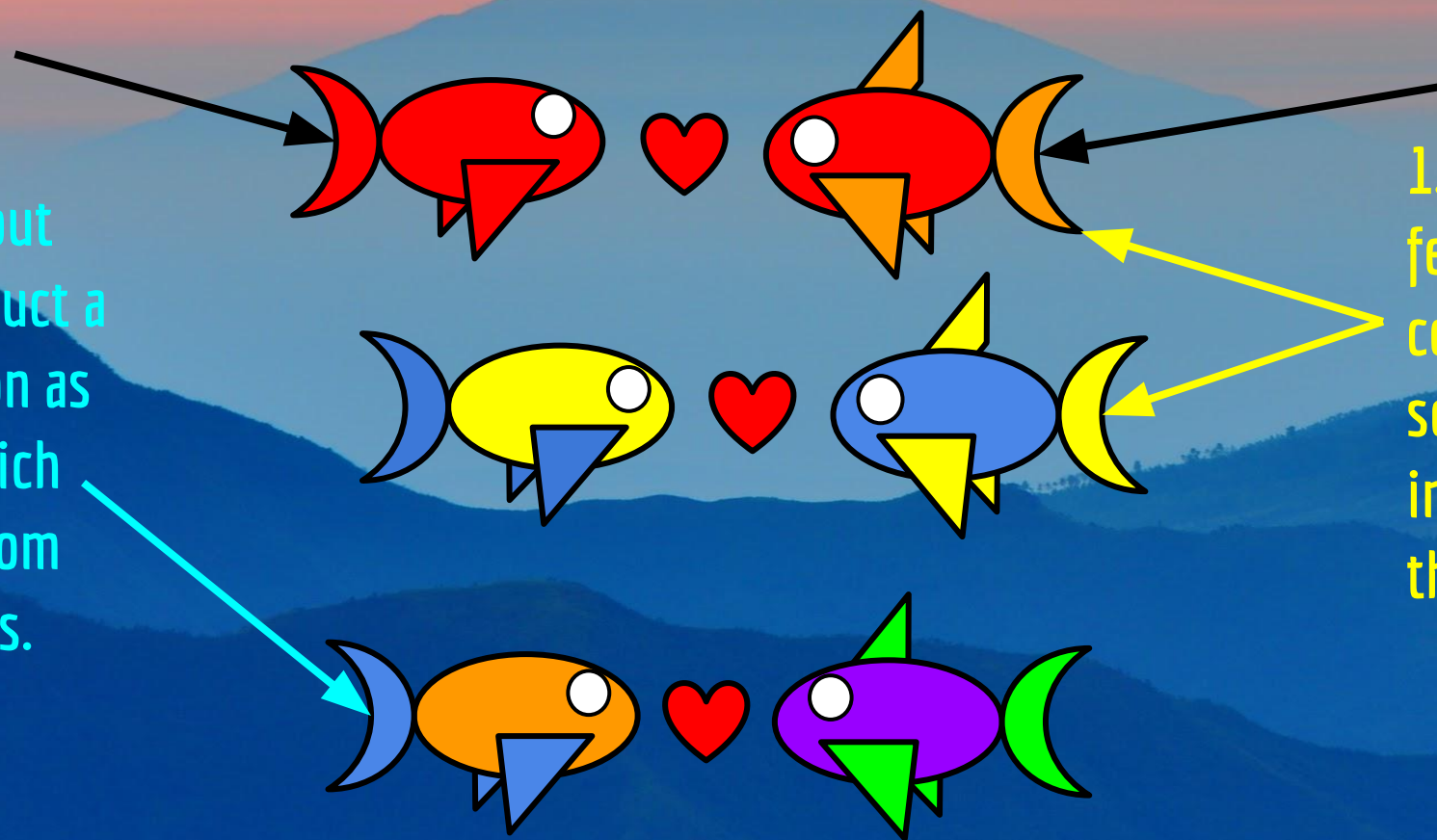


Male Cichlids

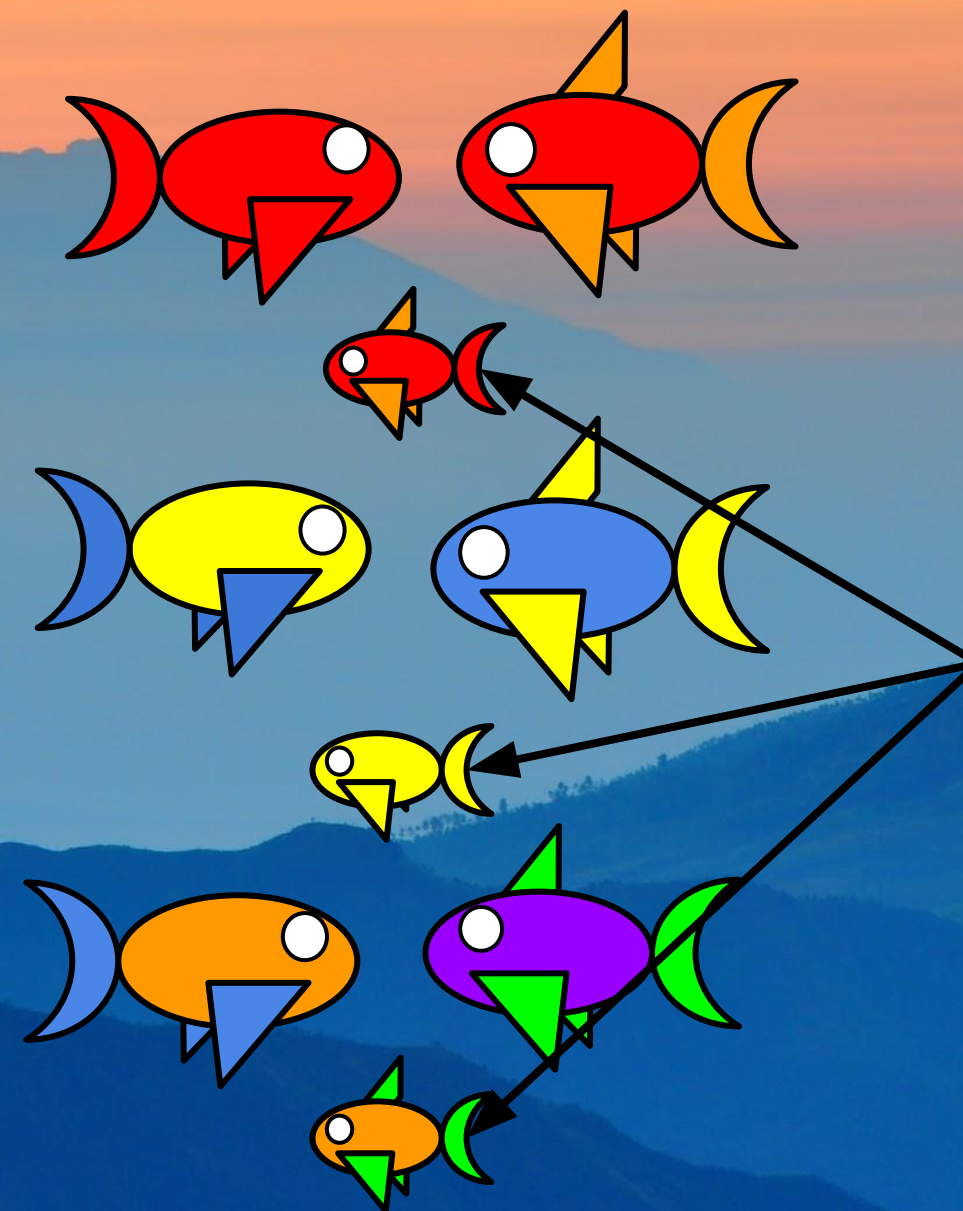
2. However, regions at deep levels without enough light construct a barrier for coloration as sexual selection which produces hybrids from different colorations.



Female Cichlids

1. Cichlids experience sexual selection as females prefer males with similar coloration. This reproductive isolation sets Cichlids species apart which results in differentiable hybrids between species that share coloration attributes.

Sympatric Speciation refers to divergence of species by isolation within the same geographical location without a physical barrier. Cichlids inhabit the Rift Valley lakes in East Africa. New species of Cichlids are produced from different selective pressure such as sexual selection as mentioned previously.



These new species are capable of reproducing successfully during adulthood and continue to produce new species through the selection of reproduction while remaining in the same region.