

Historic, archived document

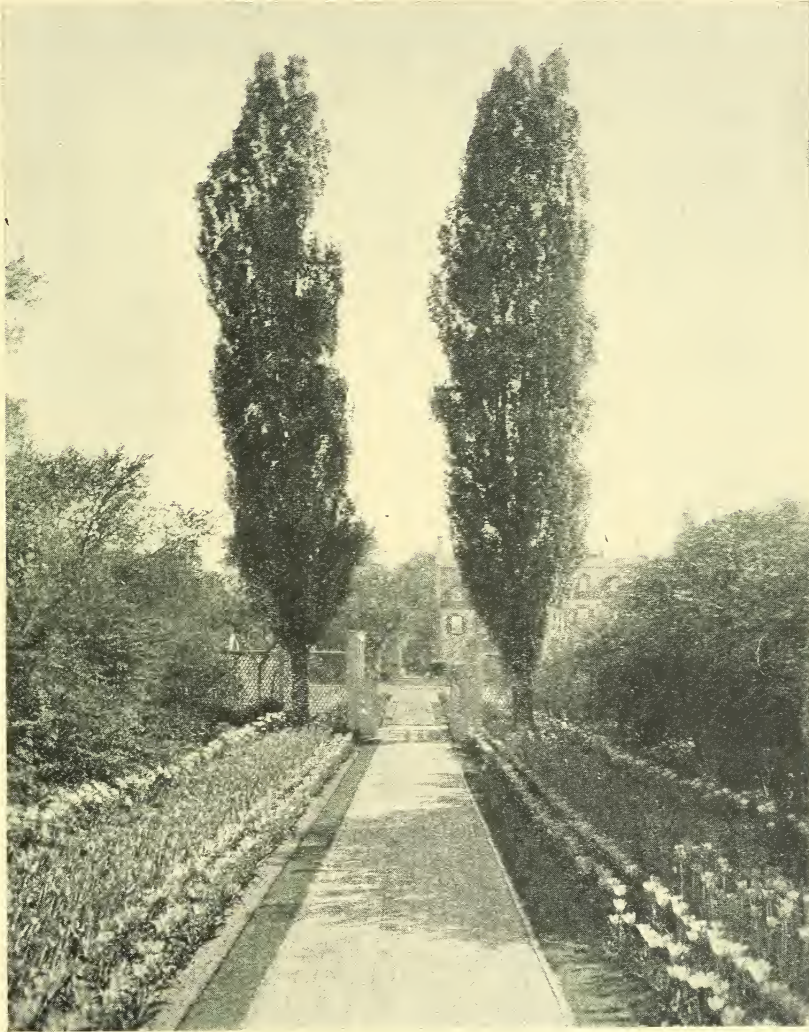
Do not assume content reflects current scientific knowledge, policies, or practices.

69.23

LIBRARY
RECORDED
FEB 14 1925

Alpha Nursery

Alpha, Illinois



Trees, Fruits and
Flowers

1925

INDEX

Apples	2-3	Ornamental Trees	13-14
Apricots	7	Peaches	4
Asparagus	7	Pears	6-7
Blackberries	8	Plums	5-6
Cherries	5	Prunes	6
Currants	8	Pie Plant	7
Crab Apples	3	Perennials	24-27
Chestnuts	7	Peonies	28
Cannas	28	Quince	7
Catalpa Seedlings	14	Raspberries	9
Clematis	23	Roses	21-22-23
Dewberries	9	Rhubarb	7
Dahlias	29	Strawberries	10
Evergreens	11-12	Shade Trees	13
Gooseberries	9	Shrubs	16-19
Greenhouse Plants	30	Vines	23
Grass Seed	30	Vegetable Plants	30
Grapes	8	Weeping Trees	14
Gladioli	29	Willows	15
General Information	32	SPECIALS	
Hedge Plants	15	Hedge Plants	15
Mulberries	7	Roses Special	22
Iris	23	Shrubs—Specials	20
		Planting Plans	12 and 31

Good Hope, Ill.
I want to tell you how well pleased I was with the Hydrangea P. G. I bought of you last Spring. It had 25 blooms on it and was beautiful.

Mrs. Ed Porter.

Kirkwood, Ill.
Received the Shrubs and everything came in fine shape, many thanks.

Lillian Sweger.

Galesburg, Ill., R. 2.
Received the Parcel Post shipment, everything was in good condition. Every one of the shrubs and trees I got last fall are living and have a very good start.

Mrs. Edd Locklin.

Hanna City, Ill.
I received the order of \$26.00 worth of plants in ten days freight and they were in good condition.

Were certainly finest trees and plants ever received.

Mrs. R. W. Francis.

Silvis, Ill.
April, 1924.
I was very much pleased with the shipment of shrubs.

Arnold Schultz,
244 16th St.

Little York, Ill.
The bushes came in fine shape; was well pleased.

Mrs. Sarah McBride.

ALPHA NURSERY

Geo. G. Wirt

H. G. Wirt

ALPHA, ILLINOIS

M. E. Wirt

Quantity

Brought Forward



Office, Greenhouse and Packing Sheds.

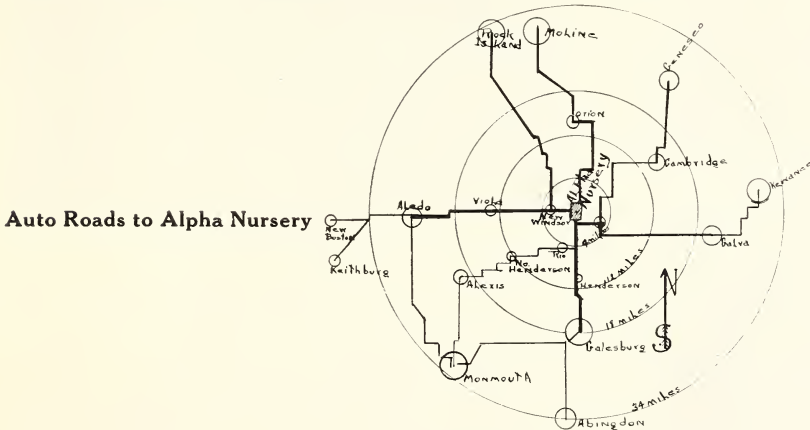
Alpha Nursery Stock

Is grown on heavy, rich black loam, which insures good, strong, steady growth. Our aim is to grow the very best, most hardy and productive varieties adapted for the Northern central states.

We have been in the nursery business at Alpha, Illinois, for the past 32 years, and have a host of satisfied customers, as we try our best to treat everyone fairly and squarely.

We have during the past summer added a Green house to our Nursery, and will grow the popular kinds of Cut Flowers and Bedding Plants. We hope you will give this new department a trial and we are sure we can please you.

How to reach our NURSERY by Auto. We are only 18 miles from Galesburg; 32 from Rock Island, or Moline; 20 from Aledo or Galva.



COME AND GET 'EM

Drive up to the Nursery, load your stock in the car and be home in a few hours. Hundreds do this every year. April and May in the spring. Oct. and Nov. in the Fall. The roads are usually good.

**Alpha Nursery Stock is Backed by Quality,
Service and Satisfaction.**

APPLES

PRICES HEREIN CANCEL ALL PREVIOUS LISTS

We Pay The Transportation Charges on all orders amounting to \$15.00 or over, if east of Colorado, except on large shade trees. We will use our judgment how to send the shipments.

APPLES

Our Apple trees are fine, all grown in our Nursery and we are sure that they will please you.
 First size 4-6 ft.—50c each; \$4.50 per 10; \$21.00 per 50; \$40.00 per 100.
 Second size 3-5 ft.—35c each; \$3.00 per 10; \$25.00 per 100.

SUMMER VARIETIES

Benonia—Medium, roundish, pale yellow shaded with crimson; juicy, tender, sub-acid; August.

Early Harvest—Medium, to large, roundish, bright straw color, flesh white, good quality. July.

Astrachan Red—Large, roundish, nearly covered with crimson; juicy, sub-acid; tree strong, spreading grower. August.

Red June—Medium, oblong, hardy and productive; deep red color; flesh white, tender, rich and sub-acid. August.

Yellow Transparent — Medium, yellow, good quality, productive, early bearer. July.

Liveland Raspberry—A very early variety of fine quality, good size, white striped and shaded with crimson; a good healthy grower, very hardy.

AUTUMN VARIETIES

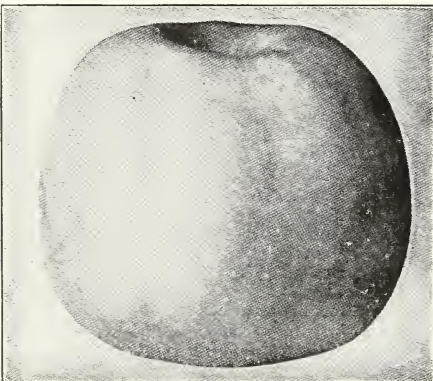
Duchess of Oldenburg — Large size, roundish, streaked with red and yellow, flesh white, juicy, acid. September.

Famüese (Snow)—Medium, deep crimson, flesh snowy white, tender. Tree slow crooked grower. October and November.

Golden Sweet—Fruit large, pale yellow; flesh tender, sweet and rich; hardy and a good grower. August and September.



Apple Trees in Nursery



Grimes Golden

Wealthy—Large, roundish, smooth, nearly covered with dark red; flesh white, fine, juicy, sub-acid quality very good; good grower and productive. October.

Dyer—Medium, roundish, yellow to green in color with small spots. Very fine flavor; good bearer.

Aunt Hanna—Medium, oblong; red with blush cheek; meat cream color, sweet, very good. September.

Wolf River—Very large, roundish. This is the large apple grown thru this section. Quality fair, productive, good for baking or cooking. September.

WINTER VARIETIES

Ben Davis—Large, handsome, striped; good, hardy, vigorous, and productive; late keepers; very showy. December to March.

Baldwin—Medium size, red; flesh yellow, sub-acid; tree a good grower but a little tender here. December.

Delicious—Fruit large, nearly covered with brilliant dark red, flesh fine grained, crisp and melting, juicy with a delightful aroma; of very highest quality. December to February.

Domine—Medium size, flat, greenish yellow with red stripes; flesh white, tender and juicy. Tree hardy, vigorous and productive. Early bearer. January.

Grimes Golden—Medium golden yellow, with white dots, crisp, tender and juicy, excellent; tree vigorous, hardy and productive. November to January.

Gano—Good size, smooth and very attractive; deep red, resembles Ben Davis but is an improvement on that variety, being handsomer and better colored. December to March.

Golden Russet—Medium size; flesh greenish white, good quality; tree a good grower and hardy. January.

Golden Winesap—New Variety, one of the most promising offered in the past twenty years. Color yellow with a slight red blush, juicy flavor of the Jonathan, and the meatiness of the old Winesap, good size, and good keeper, abundant bearer. December to March.

Jonathan—Medium, nearly covered with brilliant stripes of lively red; very showy, juicy, excellent; trees spreading and slender; bears early. November to February.

Mammoth Black Twig—Large, deep red, sub-acid; early and abundant bearer; keeps well; tree a strong grower; resembles Winesap, but is superior in many ways, and fully one-third larger. January to April.

Northwestern Greening—Large, smooth, greenish yellow; flesh fine grained, firm; extremely hardy and a strong, handsome grower. December to April.

Paradise Sweet—Medium size, greenish yellow, sweet, good quality. December.

Roman Stem—Medium size, yellow, of good quality, very productive; tree a slow grower when young.

Stayman's Winesap—Fruit large, striped, nearly covered with red; flesh greenish yellow, very juicy and aromatic; very good; a strong, spreading grower; a good, early bearer; the best of our late winter apples. January to May.

Tallman Sweet—Medium, pale yellow, firm, rich and very sweet, the most valuable preserving and baking apple; vigorous. October and December.

Winesap—Medium, roundish, deep red, firm, crisp, juicy; excellent quality, moderate grower and good bearer; succeeds well throughout the West. December to May.

Winter Banana—Fruit large, color clear yellow, overspread with pink; red-blushed; flesh yellow, very rich and juicy; tree subject to blight. November to January.

Yellow Bellflower—Large size, pale yellow, flesh white, sub-acid; tree a good grower; rather shy bearer. December.



Stayman's Winesap

CRAB APPLES

First class; 4 to 6 ft. trees, 50c each.

Transcendant—Large, golden yellow with blush; flesh firm, crisp, yellowish; fine grained, very juicy and acid. Popular for jelly and preserves. Trees grow rapid and irregular; great bearer.

Hyslop—Large, round, yellow, with heavy shadings of deep crimson; blue bloom; flesh fine, firm, yellow. Its high color always commands a fancy

market price. Bears abundantly and in clusters. Tree hardy and vigorous. September and October.

Whitney—Fruit very large, yellow striped with red, flesh yellow, very juicy and fine grained, flavor rich and almost sweet. August.

Sweet Crab—Large size, sweet, good bearer; whitish yellow. Fine for preserves and pickles. September.

PEACHES

PEACHES

Our Peaches are all Alpha grown and surely are a fine lot. They will be sure to please. Our prices are extremely low for these high quality trees.

First size 4-6 ft.—40c each; \$3.50 per 10; \$30.00 per 100.

Second size 3-4 ft.—30c each; \$2.50 per 10.

Elberta—The great American market peach; produces big, profitable crops. Fruit large, bright, attractive, yellow with crimson shading; flesh firm and of good quality. Will ripen perfectly when picked green. One of the best for home or market use. Free stone. September.

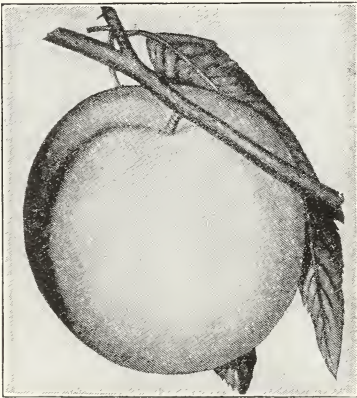
Early Elberta—Smaller than Elberta, fruit yellow; of very good quality. Tree hardy and good bearer. Ripens about ten days earlier than Elberta.

Golden—Good size, golden yellow inside and out, of very good quality. Tree very hardy and a good bearer. Has proven to be a good variety here. Sept. 10 to 15.

J. H. Hale—Of large size, ripens earlier than Elberta and is of good quality. Color, golden yellow inside and out with a red cheek. Ripens in September.

Wilson—Fruit large—yellow with large blush. Flesh yellow and juicy. Ripens ten days earlier than Champion. Originated in Mercer County. Supply limited. 4 to 6 ft. trees, 60c each.

Alexander—Medium size, almost solid red in color—flesh white and juicy. July.



Crosby

Champion—Fruit large, delicious, sweet, juicy; skin creamy white, with red cheek; handsome, hardy and productive, and a good shipper; adhering slightly to the stone. August 15th.

Crosby—Freestone, medium size, bright yellow, streaked with carmine; annual bearer; hardy. September 15th.



Elberta

Greensboro—The flesh is white, juicy and delicious quality for so early a peach. The largest and most beautifully colored of all early sorts. July.

Crawford's Early — Freestone, large, yellow; flesh yellow, quality good; tree good grower, but the buds are tender. September.

Lemon Cling—Very large, light yellow; flesh firm, yellow and rich; the great canning peach of the South and West. August.

Fairfield, Ill.

My neighbor asked me where I bought my fruit trees, stating mine were the nicest trees he had seen in the country and he wanted to order from the same place. I gave him your catalog and told him, I thot he could do best in both price and quality by ordering from the Alpha Nursery.

Rae Johnson.

CHERRIES

5 to 6 ft., first class, \$1.00 each; 6 or more 90c each.
Cannot send by Parcel Post.

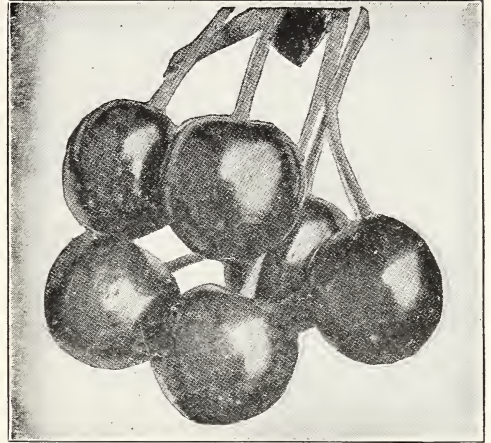
Early Richmond—Medium, red, early, hardy, immensely productive; ripens the last of June.

Large Montmorency—Large; fruit beautiful dark red, sub-acid; of the very best quality; ten days later than the Early Richmond; a fine shaped tree; hardy and productive.

Dyehouse Cherry. Ripens a week before Early Richmond. Fine quality and moderately productive.

Compass—Cross between a cherry and a plum. Fruit good size, bright red, sweet and juicy, of fine flavor. A good early bearing tree, perfectly hardy. 5 to 6 ft., 60c each.

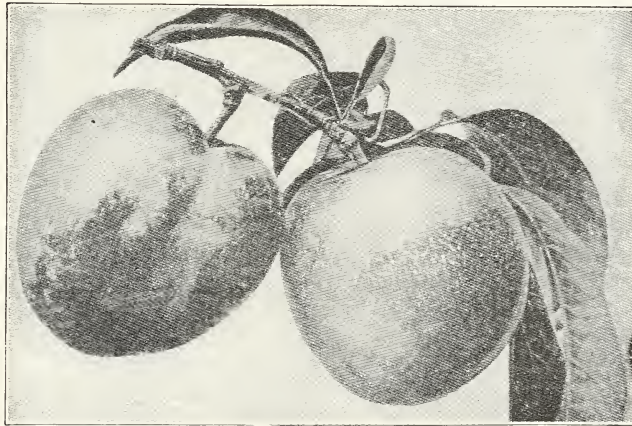
English Morello—Fruit large dark red, very acid, tree a poor grower and a little tender here. July.



Early Richmond

PLUMS

First class, 4 to 6 ft. trees, 65c each; 6 or more, 60c each, except as noted.
Cannot send by Parcel Post.



Red June Plum

Abundance—Medium size, showy! beautiful amber colored, turning to a rich cherry, highly perfumed; flesh light yellow, exceedingly juicy and tender. July.

Burbank—Very large, reddish purple; flesh yellow and solid; cling, fine quality, one of the best for canning; tree strong, spreading grower, hardy and productive; subject to rot in wet years. August.

Red June—A vigorous, hardy, upright, spreading tree; as productive as abundance. Fruit medium to large, deep vermilion red with handsome bloom; very showy, flesh light lemon color, slightly sub-acid, of good and pleasant quality; pit small. Early.

Green Gage—Medium sized yellow freestone, of extra good quality; tree a slow, dwarfish grower. August. 80c each. (Continued on Next Page).

PRUNES and PEARS

PLUMS

Wild Goose—Hardy, native, deep red with purplish bloom; flesh yellow, juicy and sweet; rapid grower; early and abundant bearer. July and August.

Yellow Egg—Fruit large, yellow, fair quality; fine for canning; tree a good grower and very productive; the best of the yellow plums for this climate. September. 80c each.

Guii—Fruit large, purplish blue; flesh yellow, firm and sweet; freestone; tree hardy and a strong grower. It has done the best here of any of the large blue plums. September. 80c each.

Blue Damson—Enormously productive. Fruit small size, about an inch long; skin purple, covered with thick blue bloom; flesh melting and juicy, rather tart, separates partially from the stone. September.

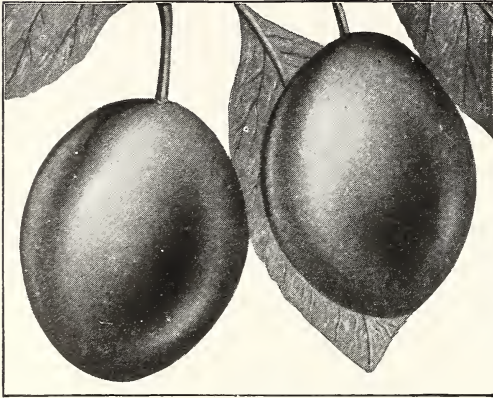
Hanska—Cross between native Plum and Apricot Plum of China, fruit splendid for eating out of the hand and when cooked retains the apricot flavor, fruit about one and one-half inches in diameter, red in color, flesh firm, yellow, good quality. Begins to bear the second year. Hardy.

Sapa—Fruit dark purple, thin skin, red purple flesh. Very fine for eating and cooking, fine flavor and very prolific bearer. Fruit borne in clusters around the stem; trees three years old have borne as high as one and one-half bushels. Hardy.

Opata—Dark purplish red. Flesh green, flavor spicy, rich and sweet. Tree vigorous and hardy. A very productive and early bearer. Ripens in July.

PRUNES

4 to 6 ft., 75c each.



Italian Prunes

Italian Prune—Medium large; purplish-black; blue bloom; free; flesh greenish-yellow, juicy, sweet, and of good quality, will hang on tree after ripening; splendid for drying, canning, and market. Tree very productive. September.

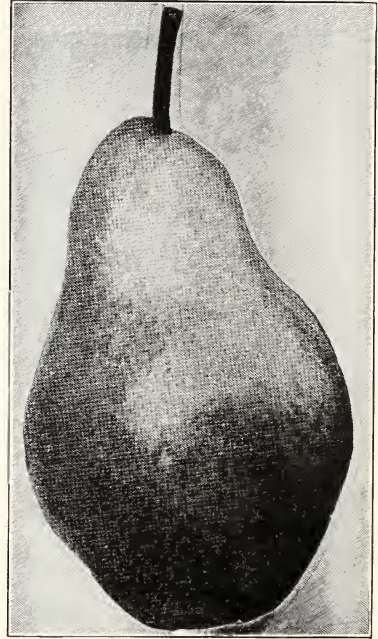
Canton, Ill.

I wish to extend my thanks for the excellent stock which you selected and shipped to us. Each specimen was in fine condition.

E. A. Heald,
Pres. Canton National Bank.

PEARS

4 to 6 ft., first class, 80 cents; 6 or more, 75 cents each. Except as noted. Cannot send by Parcel Post.



Keiffer Pear

Keiffer—While not of the best quality, it is one of the favorite varieties for canning and preserving. A very profitable market sort on account of its good keeping and shipping qualities. Of extraordinary size and beauty. 60c each.
(Continued on Next Page).

PEARS

Bartlett—Large size, color rich yellow, with often a beautiful blush next the sun; buttery, very juicy, and highly flavored. September.

Duchess—Very large; dull, greenish yellow, streaked and spotted with russet; flesh white, buttery and very juicy, with a rich and very excellent flavor. October.

Lincoln—Large; golden yellow; quality only medium, distinctive as having very few if any seeds, almost clear of core. Tree good grower and productive.

Seckel—Small, yellow, with crimson cheek; flesh melting sweet and aromatic; most exquisitely flavored pear known. Tree slow grower, but hardy and healthy. September.

Dwarf Pears—Bartlett, Duchess, Seckel, Lincoln. These pears commence bearing much earlier than the standards. 4 to 5 ft. trees, price same as standards.

MULBERRIES

Mulberries, Russian—Tree ornamental, as well as productive; bears very large, handsome black fruit of rich flavor. 4 to 5 ft. trees, 45c each.

QUINCE

Quince (Orange)—The quince is in very high favor because of its many uses, such as canning, preserving, and flavoring other fruits. This variety is golden yellow, flesh firm, of good flavor; bears abundantly; 4 to 5 ft. trees, 85c each.

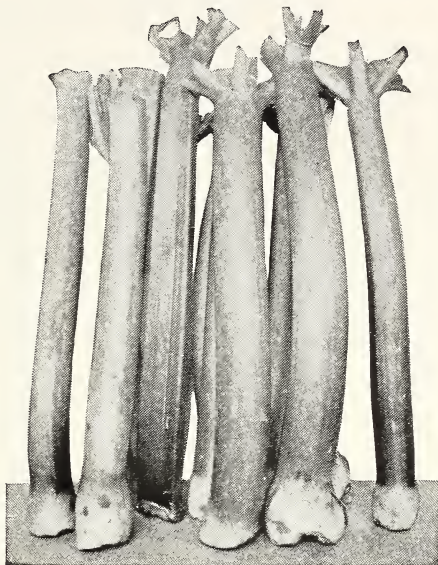
APRICOTS

Apricots—The apricot is a very welcome fruit, ripening between the cherry and peach; it requires the same treatment as the plum; good bearer; fruit light orange, flecked with red. Flesh tender, juicy, sweet, and good. 4 to 5 ft. trees, 50c each.

CHESTNUTS

American Sweet—The nuts of this tree form quite an item in our commerce. They are sweet and delicately flavored. This chestnut is also a grand timber and ornamental shade tree. 5 to 6 ft. trees, \$1.00 each.

PIE PLANT



Linnaeus—Large, early, tender and fine, the very best of all. Large two-year-old roots, 10c each; \$1.00 per 12. Postage, 6c for 1; 8c, 2 to 4 roots; 15c, 4 to 8 roots; 20c for 8 to 12 roots.

ASPARAGUS



Conovers Colossal Asparagus—Produces large, tender shoots of vigorous growth. None better. 2 year roots 35c per 12, \$2.00 per 100. Postage, 10c per 12; 20c per 50.

Galesburg, Ill.
254 S. West St.

The plants came and are first class in every way.

Mrs. E. C. Ostreicher.

GRAPES and GARDEN FRUITS

GRAPES

Postage 6c, for 1 to 4 plants; 8c, 4 to 8 plants; 10c, 8 to 12 plants.
Large 2 year Plants.

Concord—Black, the most popular grape in America; bunches and berries large, hardy, healthy and productive. 20c each; \$2.00 per 12; \$15.00 per 100.

Moore's Early—Black, bunches medium size and very compact; berries large and of excellent quality; ripens ten days before Concord which makes it very desirable for market; very hardy, well suited for the North; one of the best. 30c each; \$3.00 per 12. \$20.00 per 100.

Campbell's Early—A strong grower, an abundant bearer; bunches and berries very large, glossy black; ripens with the Moore's Early, but will hang on the vines until frost. 40c each; \$4.00 per 12.

Agawam—Red or maroon color; berries large, of rich, peculiar aromatic flavor; ripens a week later than Concord; vine a strong, rank grower. 30c each. \$3.00 per 12.



Grapes in Nursery

Moore's Diamond—White, bunches and berries large; flesh tender, juicy; hardy, productive, early; fine quality. 30c each. \$3.00 per 12.

CURRENTS

Postage 6c, 1 to 4; 8c, 4 to 8; 10c, 8 to 10; 12c, 10 to 12 plants.

All large 2 year plants.

We have an extra fine lot of Red Currants and the price is very low. The plants are large and well branched, we are sure they will please you.

Red Cross—One of the best currants on the market. Ripens in mid-season and produces an enormous quantity of fruit; flavor mild and pleasant. The leaves of the plant are so dense as to hide the canes from view. The growth is very vigorous and hardy. Its good qualities claim for it much popularity.

15c each; \$1.50 per 12; \$10.00 per 100.

White—A good grower; berries yellowish white, sweet and mild.

20c each; \$2.00 per 12.



Red Cross

BLACKBERRIES

Postage, 6c per 12; 15c per 50.

Eldorado—Among the good points of this valuable new blackberry are great productiveness, hardiness, extra fine quality, and sweetness of flavor, without core, the berries are large, jet black, borne in clusters and ripen well together; sweet,

melting, rich and pleasant to the taste. Price, 50c per dozen; \$4.00 per 100; \$35.00 per 1000.

Snider—Very hardy and productive, of medium size; 50c per 12; \$4.00 per 100.



Champion

GOOSEBERRIES

30c each; \$3.00 per 12

Postage 6c for 1 to 4 plants; 8c for 4 to 8; 10c for 8 to 12 plants.

Champion—A variety introduced from Oregon, where it originated. Bush a strong, upright grower, very hardy and enormously productive; fruit round, entirely free from mildew and easily gathered. We consider this the best of the gooseberries for general planting.

Pearl—Medium; greenish; quality good; a desirable sort for market also. Bush a strong grower and very productive.

Downing—Native variety, fruit large, round, light green, juicy and fine flavored. Smooth skin; Productive.

RASPBERRIES

Postage 8 cents per 12; 15 cents per 50; if within 30 mi.

Cumberland—One of the largest black raspberries known; its immense size, firmness and great productiveness entitles it to first consideration. Unusually strong grower, throwing up stout, stock canes; perfectly hardy. The most profitable raspberry grown for home or market use. Fruits for long season.

50 cents per 12; \$3.50 per 100.

Louden Red—Large size, very firm and hardy, moderate grower, the best of the reds for heavy, rich soil. Sprouts.

50 cents per 12; \$4.00 per 100.

St. Regis (Everbearer)—Very early, fruit large and extra quality, good, stocky grower and hardy. It is very much like the Louden except it makes a fall crop of the new canes. Red variety. 75c per 12; \$2.50 per 50; \$4.50 per 100.

Purple Columbia—Deep purplish red, highly flavored, extra strong canes, wonderfully productive; berries very large. There is nothing finer grown in the line of fruit than this variety for table use, canning, etc. This variety does not sprout. 75c per 12; \$1.50 per 25; \$2.50 per 50; \$4.50 per 100

Raspberries are tied 25 to the bush, the top canes are left 6 to 10 inches long for the sole purpose of tying them in bunches, and after planting this cane generally dies, and the plant starts from the crown or root. In planting, spread the roots out good, cover the crown from 2 to 2½ inches with soil. **Do not** put manure next to the roots. Cultivate good the first year, then mulch heavy along the row.



Cumberland

DEWBERRIES

Lucretia—A trailing blackberry, larger and juicier than blackberries. Fruit ripens ten days before blackberries. For the best success, cover them in the fall like strawberries; in the spring

take the mulching off and put it under them to keep the berries off the ground, and shorten the runners to eighteen inches. Prices, 75c per 12; \$2.75 per 50; \$4.00 per 100. Postage 8c per 12; 15c per 50.

GARDEN FRUITS

STRAWBERRIES



Dunlap Strawberry

Norwood—Extra large and of very fine quality; bright red all the way through, a strong, healthy grower; the best of the large fancy berries. 25 plants, 60c; \$2.00 per 100.

Gandy—Extra large and handsome, firm; the very latest; most all of the crop ripens after the Dunlap.

25 plants, 50c; \$1.50 per 100; \$6.00 per 500; \$8.00 per 1,000.

The following varieties of strawberries are all perfect flowering; that is, they do not need any other variety planted near them for fertilizer. We tie all strawberries 25 in a bunch. Write for fall prices.

If wanted by Parcel Post. Add 5c for 25, 8c for 50, 10c for 100 plants.

Senator Dunlap—Fruit good size, regular form, beautiful bright red; glossy, firm, splendid keeper and shipper; excellent quality; one of the best for canning; ripens early and continues a long time.

25 plants, 35 cents; 50 plants, 60 cents; \$1.00 per 100; \$4.50 per 500; \$6.50 per 1000; \$30.00 for 5,000; \$50.00 for 10,000 plants.

EVERBEARING STRAWBERRIES

This kind of strawberries has proved a success. They are hardy and healthy, make a crop in June and another in the fall.

Progressive—Berries large, firm, and good quality; plant a healthy, strong grower and a good plant maker. This plant seems to be a general favorite. With us the June crop was almost as good as the standard varieties. This variety is the original ever bearer and the best of all, and will give the best satisfaction.

50c per 12; 65c per 25; \$2.00 per 100.

TRUE ECONOMY—It will always be found to be true economy to buy the very best trees, plants, etc., as to quality, that can be had. They need not be the largest stock, but stock that is guaranteed to be first-class as to quality and free from disease and injurious insects.

A first-class fruit tree is one that is healthy, well-grown, well dug and free from disease and injurious insects. Other things being equal, it is best to select a tree one or two years old. Older trees may be successfully planted, but the younger ones, are more satisfactory, are handled more easily, suffer less in transplanting and are more profitable in the long run.

Early ordering is to the advantage of the buyer because he can get the varieties desired.

When sending in an order, always state mode of shipment.

If stock, when packed for shipment does not exceed 100 pounds in weight, it is better to ship by express, so that the stock need not be out of the ground long.

NORWAY SPRUCE

A lofty elegant tree, of perfect pyramidal habit; remarkably elegant and rich; and as it gets age, has fine, graceful, pendulous branches. It is exceedingly picturesque and beautiful.

Much used for foundation planting, where taller Evergreen is wanted as at the corner or each side of the entrance; also fine for the Shrubbery border, and for windbreaks. They will stand pruning thus can be made into many shapes.

3 ft. balled and burlaped.....	\$2.00 each
2½ ft. balled and burlapped.....	1.50 each
2 ft. balled and burlapped.....	1.00 each
18/24 in. not balled.....	.70 each
	\$6.00 per 10.
12/18 in. not balled.....	.50 each
	\$4.50 per 10.



Norway Spruce

GLOBE ARBOR VITAE

This variety maintains a natural globe shape without trimming and under good conditions will reach a diameter of about 3 ft. It is especially fine for tubs, low borders and foundation plantings. 16 in. in diameter B. & B. \$2.50 each.

IRISH JUNIPER

This is another pyramidal form evergreen. It has many branches coming up and forms a very straight compact tree. The silver color makes it desirable. It seldom attains a height of over 4 or 5 ft. Fine for all form of planting.

2 ft. B. & B.....	\$1.75
1 to 1½ ft. B. & B.....	1.25

BALSAM FIR

Balsam Fir—A regular symmetrical tree assuming the conical form when quite young. Leaves dark green on top and light beneath.

Can be used for foundation planting also very good in shrubbery border where a taller growing tree is wanted. They make a good contrast, because of their unusual color.

2 to 3 ft. balled and burlapped.....	\$2.00
1½ to 2 ft. balled and burlapped.....	\$1.50

BLUE CEDAR

(*Juniper Glauca*)

The fascinating native Red Cedar that is compared to the classic Cypress. The upright habit, the silvery tint of its foliage and the freedom with which it grows in unfertile places are valuable qualities.

Color changeable from dark to light blue. Splendid for planting at the corner of foundations, each side of the walks, drives, etc., as fine for accents in the shrubbery border.

4 to 4½ ft. Select B. & B.....	\$4.00
3 to 4 ft. B. & B.....	3.00
2 to 2½ ft. B. & B.....	1.50
18 to 24 in. B. & B.....	1.00

GREEN CEDAR

Juniperus Virginiana

Same form and habit as above, only the color of foliage is green which makes a very good contrast when planted with the blue variety.

4 ft. B. & B.....	\$3.00
3 to 3½ ft. B. & B.....	2.50
2 to 2½ ft. B. & B.....	1.50
18 to 24 in. B. & B.....	1.00

CHINESE ARBOR VITAE

Biota—More delicately cut foliage, arranged in perpendicular fronds distinguish these plants from the better known Arbor Vitae which they closely resemble.

They grow in a close Pyramid which makes them very desirable for all plantings when a tall slim tree is wanted.

3-4 ft.	\$3.00
2 to 2½ ft.....	1.50
18-24 in.	1.00

AMERICAN ARBOR VITAE

This tree is very unique in its habits of growth, the leaf gradually hardening and forming the wood of the tree; habit upright; much inclined to branch and form more than one trunk; one of the best trees for ornamental hedging; also fine for foundation planting as it can be trimmed in almost any shape. When trimmed into low round balls make a pretty effect in front of larger trees and shrubs.

2-2½ ft. B. & B.....	\$1.50
2 ft. B. & B.....	1.00
18-24 in. not balled.....	\$.70 each
	\$6.00 per 10.

12-18 in. Hedge size.....	\$.40 each
	\$3.50 per 10; \$30.00 per 100.

EVERGREENS

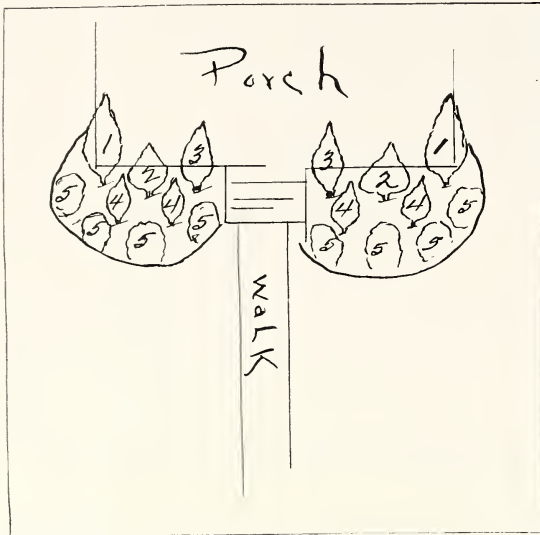
Evergreens are fast becoming the basis of Landscape Plantings. The Public is calling for more color in winter. The Evergreens are the only growing things, thriving in this climate, that give color winter and summer. They help to break up the dead appearance of other shrubs during the cold season and produce an effect during the summer that is not obtained with any other plant or shrub.

Evergreens are used for foundation planting, as individual specimens and mixed in the shrubby border.

We are offering a very good collection of evergreens in about all shapes and sizes.

Do not forget our Landscape Service, we make plans, furnish and plant the trees, shrubs, evergreens, etc. Call us before planting time so your plan will be ready to plant at the proper time. We can save you money and are sure we can please you.

We are making a SPECIAL offering on two plans using evergreens and shrubs. We have figured them at quite a saving to you. These prices are F. O. B., Alpha.



PLAN FOR ENTRANCE NO. 1

This plan is adapted for the front of a modest home, of almost any type with entrance in the center.

No. on Plan	Variety	No. Plants	Height of Plants
1	Blue Cedar	2	4-4½ ft.
2	Norway Spruce	2	2½ ft.
3	Chinese Arbor Vitae	2	3½ ft.
4	Am. Arbor Vitae	4	2-2½ ft.
5	Jap. Barberry	8	18-24 in.

Regular price\$21.00
 Our Special Price.....\$18.00
 Saving\$ 3.00

FOUNDATION PLANTING NO. 2

This plan is adapted for front and side planting of almost any type of home with entrance at the side.

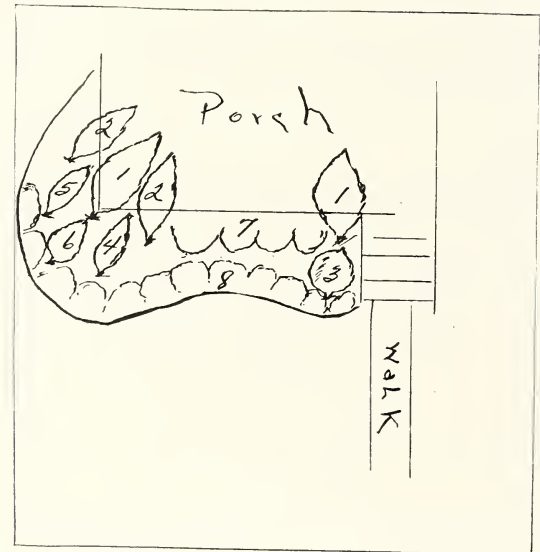
No. on Plan	Variety	No. Plants	Height of Plants
1	Blue Cedar	2	4-4½ ft.
2	Chinese Arbor Vitae	2	3½ ft.
3	Globe Arbor Vitae	1	1-1½ ft.
4	Am. Arbor Vitae	1	2-2½ ft.
5	Norway Spruce	1	2½ ft.
6	Sabina Juniper	1	2 ft.
7	Hydrangia	4	2½ ft.
8	Jap. Barberry	12	18-24 in.

Regular Price\$31.00
 Our Special Price.....\$27.00
 Saving\$ 4.00

The prices on these plans are very reasonable, and if you are planning on improving your home this spring, it would pay you to consider one of the above offers.

They can be adapted to many types of homes, our landscape gardener can arrange the plan to fit your home if you will only send a small drawing.

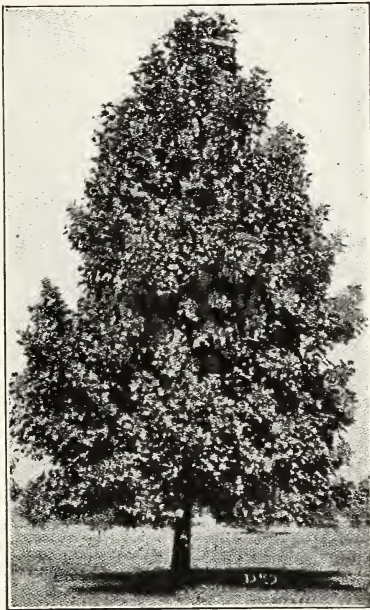
The plants on either of these offers can be taken in a touring car, saving you the freight or express and you will be home and have them in the ground in a few hours.



SHADE TREES

Popular Norway or Carolina—One of the most rapid growing trees, with large, deep green leaves; succeeds everywhere, especially adapted to cities, where it makes a fast growth, and resists smoke and gas. It makes a spreading head and dense shade when properly trimmed.

10 to 12 ft., \$1.25 each; \$10.00 per 10; 8 to 10 ft., 75c each; \$7.00 per 10; 5 to 7 ft., 40c each; \$3.50 per 10.



Sycamore

Elm—White, the noble, drooping, spreading tree of our woods; one of the grandest of park or street trees. 10 to 12 ft., \$1.25 each; \$10.00 per 10; 8 to 10 ft., 90c each; \$7.50 per 10; 6 to 8 ft., 60c each; \$5.00 per 10.

Mountain Ash—A very pretty, small sized tree, with clusters of large orange berries in the fall. 5 to 6 ft., \$1.00 each.

Catalpa Speciosa—A rapid grower with large, light green leaves and white flowers in June. 6 to 8 ft., 50c.

Norway Maple—A native of Europe; a large, handsome tree, with broad, deep green, shining foliage. Very similar to hard maple, but faster growing. 6 to 8 ft., \$2.00 each; 8 to 10 ft., \$3.00.

Hard Maple—Spreading top and very dense shade; very desirable for street, park or lawns. 5 to 6 ft., \$1.25; 6-8 ft., \$1.75 each.

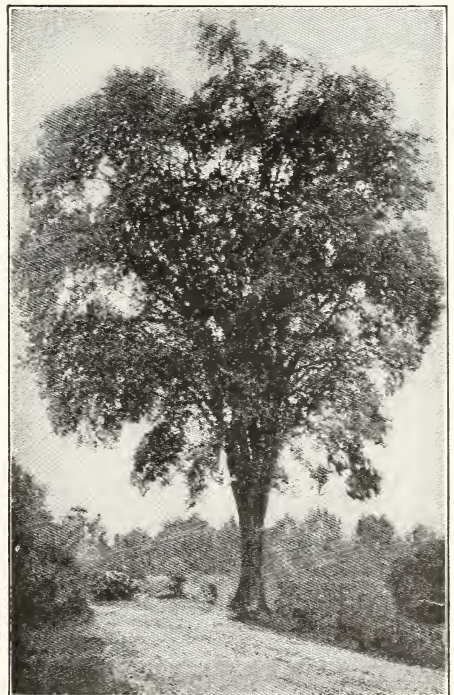
Scarlet Maple—Spreading in growth forming a dense round head. Scarlet flowers and fruits. Very showy in Autumn with orange or scarlet leaves. 3 ft., 60c each.

Crab (Bechtel's Double Flowering)—A beautiful tree while in bloom; the flowers are fragrant and double, resembling miniature roses, color pink. 2 to 3 ft., \$1.00 each.

Lombardy Poplar (P. Fastigiata) — Attains a height of from fifty to one hundred feet; well known for its erect, rapid growth and tall spiry form; indispensable tree for landscape gardening to break the monotony of most other trees. 6 to 8 ft., 65c each; \$6.00 per 10.

Horse Chestnut—White Flowering — A handsome tree of regular form, with showy foliage and covered in the spring with panicles of white, showy flowers marked with red. 4 to 5 ft., \$1.50 each.

Redbud (Cercis)—Judas Tree—A medium sized tree with large irregular head shaped leaves; derives its name, Red Bud, from the profusion of delicate, reddish-pink blossoms with which it is covered in early spring before the foliage appears. 3 to 5 ft., 75c each.



Elm

Sycamore—A lofty, wide-spreading tree; heart-shaped leaves; valuable for its handsome foliage and free growth. 4 to 5 ft., 75c each.

Linden, American—A stately tree, growing 60 to 80 feet tall, with large, shining cordate leaves. Valuable for its beautiful white wood; flowers in July. 5 to 6 ft., 85c each.



Norway Maple

Olive, Russian—Tree attains a height of from 20 to 30 feet; bark dark green; wood very heavy and burns like a candle; foliage rich silver color, willow shape; flowers deep golden and very fragrant; hardy. 4 to 5 ft., 50c each.

Tulip Tree—A native tree of the magnolia order; rich, glossy foliage; regularly distributed branches and large tulip-like flowers; difficult to transplant unless of small size. 5 to 6 ft., \$1.00 each.

Tree of Heaven (Ailanthus)—10 to 15 ft. More of a tree than a shrub. Hardy and very rapid grower. Tropical foliage, long, fernlike leaves; good for background of other shrubs. 4 to 5 ft. plants, 75c each.

Catalpa Seedling—\$2.50 per 100; \$7.00 per 500. These are the hardy Speciosa. For posts they should be planted 4x5 ft., and given good cultivation for two or three years.

Bushnell, Ill.

I am more than pleased with everything in the order. Every tree and plant was more than up to expectation and I never saw better rooted plants from any nursery.

Mrs. E. W. Persinger,
Shady Farm.

WEeping TREES

Catalpa Bungeii (Umbrella Catalpa)—Grafted on stems six to eight feet high, it makes an umbrella-shaped top without pruning; perfectly hardy; leaves large, glossy, heart-shaped, deep green; lay like shingles on a roof.

6 to 8 ft., \$2.00; 5 to 6 ft., \$1.50; 3 to 4 ft., \$1.00 each.

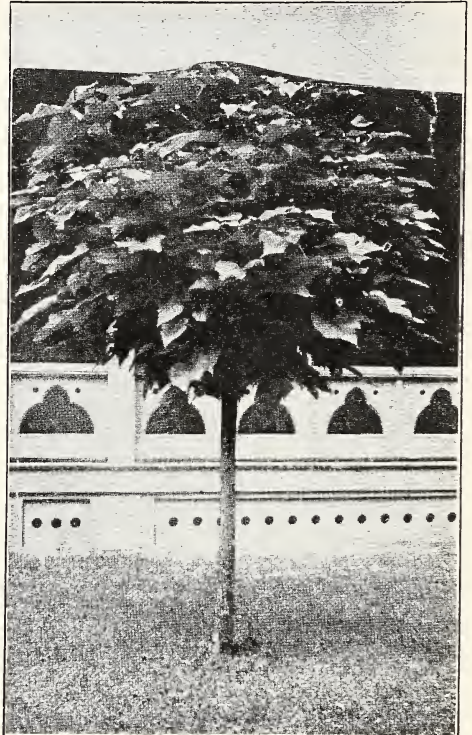
Tea's Weeping—A variety of the well known Russian Mulberry. Forms a perfect umbrella-shaped head, with long, slender branches which droop to the ground parallel with the stem. Very beautiful and hardy. \$2.50 each. 4 to 6 ft.

Camperdown Elm—Leaves are large, glossy dark green. Its vigorous, irregular branches, which have a uniform weeping habit, overlap so regularly that a compact, roof-like head is formed, a strong, vigorous grower, susceptible to training into picturesque form, and considerable utility for canopy shade. The finest Weeping Elm and one of the best weeping trees. \$2.50 each. 5 to 6 ft.

Sherrard, Ill.

Thank you for the prompt service and the good condition in which my plants arrived.

Adaline M. Quaintance.



Catalpa Bungeii

WILLOWS

Willow, (Salix Caprea) Pussy Willow—A small shrub-like tree. Its great charm is in the early spring when each bud changes into a large fur-like catkin. 3 to 4 ft., 60c each.



Wisconsin Willow in Nursery

Willow, Wisconsin (Weeping)—A very graceful tree of large size. Its fresh, bright green tint and long, wavy branches make it very attractive. Very hardy. 5 to 6 ft. trees, 75c each.

THE BEST HEDGE AND BORDER SHRUBS

Barberry (Thunberg's or Japanese)—The finest of all the Barberries, grows in compact form, spiny stems, foliage fine and dense, changing to brilliant red in fall, the clusters of red berries hanging on all winter. Much used for hedge and borders. Considered by many to be the most valuable foreign shrub grown. This Barberry is recommended by the Government. It does not have the wheat rust.

18 to 24 in., 35c each; \$3.20 per 10; \$30.00 per 100.
12 to 18 in., 30c each; \$2.80 per 10; \$25.00 per 100.
10 to 12 in., 10c each; \$1.00 per 12; \$ 8.00 per 100.

American Arbor Vitae Evergreen—A native of the North; very hardy and will stand shearing well any time of the year; the most popular for hedges and screens, as it keeps green the year round.

12 to 18 in., 40c each; \$3.50 per 10; \$30.00 per 100.

Privet Amours River North—A valuable shrub for hedges and borders, color glossy green, holds its foliage almost the whole year; will stand trimming to almost any extent; perfectly hardy.

2 to 3 ft., 30c each; \$2.50 per 10; \$20.00 per 100.

18 to 24 in., 25c each; \$2.00 per 10; \$17.00 per 100.

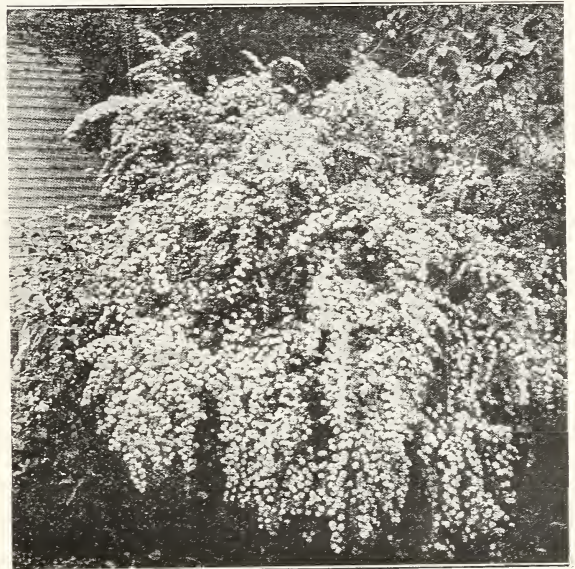
12 to 14 in., 10c each; \$1.00 per 12; \$ 8.00 per 100.

Spirea Van Houtii (Bridal Wreath)—Used for tall hedges or screens. Has abundance of small white flowers early in the summer.

2 to 3 ft., 40c each; \$3.50 per 10.

18 to 24 in., 35c each; \$3.00 per 10; \$25.00 per 100.

12 to 18 in., 10c each; \$1.00 per 12; \$8.00 per 100.



Spirea Van Houtii

Why not fix up the Home this spring, now is a good time to start that hedge. The shrubs we list on this page are all hardy and will stand 40 below zero; all they require is a little cultivation the first year and after that trimming. Our prices are very reasonable and our stock first class.

Come to the Nursery and look the plants over.

See page 20 for Special Prices on smaller stock for Hedges.



Hydrangias and Lombardy Poplars

In the adornment of the home grounds, hardy shrubbery has come to be recognized as indispensable, and it is a pleasure to be able to offer the quality of stock which will be found listed on the following pages. Its uses are many and varied. To set about the foundations of the house, to grow as hedges, to divide properties, or as screens to hide unsightly objects, to supplement the planting of evergreens or shade trees, shrubbery has its distinctive place. The proper planting of shrubbery about the home adds to its value many times the amount expended.

When 10 or more shrubs are ordered deduct 5c from the price of each shrub.

Althea (Rose of Sharon)—Grows 3 to 4 ft. A free flowering shrub, blooms in August and September; flowers resemble double hollyhocks. Foliage very attractive. Need protection through winter. 2 ft., 50c each. Colors—white, purple, red and rose.

Arrowwood—8 to 12 ft. has bright green heart shaped leaves which turn to purple and red. Creamy white flowers followed by blue fruits which cling to the branches a long time. 2 to 3 ft., 50c each. 18-24 in., 45c each.

Almonds, Double White (Amygdalus Alba)—Grows 3 to 5 ft. White flowers like small roses; blooms early; decorative. 2 to 3 ft., 90c each.

Almonds, Double Pink (Amygdalus Rosea)—Same as above except flowers pink. 2 to 3 ft., 90c each.

Aralia Pentephylla—Grows 4 to 6 ft. Valuable for its excellent heavy bright green foliage. Small greenish white flowers. Good in rocky or sandy places. 2 to 3 ft., 50c each.

Aralia Spinosa—Grows 6 to 8 ft. A strong, rapid growing, rugged shrub with large decidedly tropical looking leaves. Branches thickly covered with long spines. Flowers appear in large masses; white to yellow. A picturesque plant. 2 to 3 ft., 50c each.

Berberis Thunbergi (Japanese Barberry) — The Barberry is used extensively where a good dwarf, bushy hedge is desired. Every branch is thickly studded with short thorns, and it is often purchased on this account. The foliage turns to a brilliant red in September, which is followed in the winter by scarlet berries which help to make it an attractive shrub the year round. It is not susceptible to wheat rust. 18 to 24 in., 35c each; \$3.20 per 10; 12 to 18 in., 30c each; \$2.80 per 10. See page 15 for 100 lots. (See page 20 for specials.)

Crab—(Becktal's Double Flowering), \$1.00 each. See page 13.

Calycanthus, Sweet Scented—Grows 3 to 5 ft. The wood is fragrant, rich; flowers are chocolate color, having a peculiarly agreeable odor. Blooms in June and at intervals afterwards. 2 to 3 ft., 50c each.

Cranberry High Bush (Viburnum Opulus) — Grows 6 to 8 ft. Foliage lustrous green, changing to rich copper; blossoms in May with clusters of flat-topped white flowers followed by scarlet berries. 2 to 3 ft., 60c each.

Currant (Ribes Aureum)—Grows 6 to 8 ft. The golden flowering currant; blooms in April and May, followed by large black berries; showy; thrives everywhere; red leaves in fall; excellent shrub for background 2 to 3 ft., 50c each.



Barberry and Spirea Van Houtii

When 10 or more shrubs are ordered, deduct 5c from the price of each shrub.

Deutzia Crenata—Double white flowers; blooms in May and June. Attains a height of 2 to 4 ft. 18 to 24 in., 50c each.

Deutzia Lemoine—Grows 3 to 5 ft. Single white flowering, spreading habit, fine branches and leaves; blooms early in the summer. 18 to 24 in. plants, 50c each.

Deutzia (Pride of Rochester)—Grows 4 to 6 ft. Blooms early in the spring, with extra large white flowers; one of the hardiest of the Deutzia. 18 to 24 in. plants, 50c each.

Grey Dogwood 6 to 15 ft. Good for tall shrub groups. Grows into a small tree of almost perfect habit. White flowers in June followed by white berries. Foliage turns to crimson in fall. 2 to 3 ft., 50c.

Dogwood Red (Cornus Siberica)—Grows 6 to 10 ft. Dark green foliage, pale on the underside; blooms early in the summer with clusters of flat-topped, creamy white flowers, followed by light bluish fruit; branches are dark red; very attractive shrub. 2 to 3 ft., 50c each. 18-24 in., 40c each.

Dogwood Yellow (Cornus Lutea)—Grows 4 to 6 ft. A very pretty shrub for winter color effect; bark bright yellow, foliage a pea green. 2 to 3 ft. plants, 45c each.

Elder Golden (Sambucus Aurea)—Grows 8 to 10 ft. A variety with golden yellow foliage, vigorous and spreading grower; flowers white in flat-topped clusters, followed by reddish black ber-

ries; grows well on any soil; can be pruned into a neat, compact little bush; best of the golden foliage shrubs 2 to 3 ft. plants, 50c each.

Golden Bell (Forsythea Fortunei)—Grows 4 to 6 ft. Has yellow, bell-shaped flower, in racemes, very early in the spring before the leaves are formed; up-right in growth; yellow bark. 2 to 3 ft. plants, 50c each.

Golden Bell Weeping (Forsythea Suspensa)—Similar to above, but has long, drooping branches; very pretty shrub. 2 to 3 ft. plants, 50c each.

Hydrangia P. G. (Paniculata Grandiflora)—Grows 3 to 6 ft. This is one of the most valuable hardy shrubs; the flowers are borne in great pinnacles nearly a foot long, and changing from pure white to rose or bronze in late fall; blooms from August until frosts.

18 to 24 in. plants, 50c each.
2 to 3 ft. plants, 60c each.

Hydrangia Hills of Snow (Arborescens Sterilis)—Grows 3 to 5 ft. A new variety, much like the above, but commences to bloom in July and lasts until frost; flowers borne on long stems, and changing from pure white to green, a rare variety. 18 to 24 in. plants, 60c each.

Honeysuckle Tartarian (Lonicera T.)—Grows 6 to 8 ft. A very attractive, useful shrub, with abundance of fragrant flowers in the spring and bright red fruit in the fall. Somewhat spreading in growth. 2 to 3 ft. plants, 50c each.



Hydrangia Planting

When 10 or more shrubs are ordered, deduct 5c from the price of each shrub.

Honeysuckle Morrowii (Lonicera M.)—Grows 6 to 8 ft. A Japanese variety, blossoms white, changing to yellow; refined foliage; long blooming period, followed by small berries, upright in growth. 2 to 3 ft. plants, 50c each.

Honeysuckle Fragrant (Lonicera F.)—Grows 4 to 6 ft. A very attractive shrub; foliage very pretty, with slender recurving branches. Flowers fragrant, need protection in winter. 2 to 3 ft. plants, 50c each.

Kerria White (Rhodotypos Kerrioides)—Grows 3 to 5 ft. A very ornamental shrub with bright green foliage, and single flowers in May, followed by conspicuous shining black fruit in the fall. 2 to 3 ft. plants, 50c each.

Kerria Yellow (K. Japonica)—Grows 3 to 4 ft. Foliage deep green and very dense, branches vivid green and particularly showy in winter; flowers bright yellow. A very graceful shrub. 2 to 3 ft. plants, 50c each.

Lilac Common Purple (Syringia Vulgaris)—Grows 6 to 8 ft. One of the best old time garden shrubs; bluish purple flowers. 2 to 3 ft. plants, 45c each.

Lilac White (Syringia Vulgaris Alba)—Same as above, except white bloom. 2 to 3 ft. plants, 45c each.

Lilac Persian—Grows 5 to 6 ft. Light blue flowers, narrow leaves growing on slender branches; finer variety than the above. 2 to 3 ft. plants, 60c each.

Pepper Bush (Clethra Alifolia)—Grows 3 to 4 ft. A handsome little shrub, delightfully fragrant in September when covered with long, showy wands of white flowers; foliage very dark green. 18 to 24 in. plants, 45c each.

Pea Tree (Caragana Arborescens)—Grows 8 to 10 ft. A very pretty dwarf tree or shrub, with yellow pea-shaped flowers in May, foliage in light

green; very small and fine. 2 to 3 ft. plants, 45c each.

Privet Amoor River (Ligustrum Amurense)—Grows 5 to 8 ft. Will stand 50 degrees below zero; valuable shrub for hedges and grouping with other shrubs; upright in growth; foliage, glossy green. 2 to 3 ft. plants, 30c each; \$2.50 per 10. 18 to 24 in. plants, 25c each; \$2.00 per 10. For 100 rates, see page 15. Specials, page 20.

Quince Japan (Cydonia Japonica)—Grows 3 to 4 ft. Very early; in the spring this shrub is covered with dazzling scarlet flowers, followed by small quince-shaped fruit, which are fragrant; grows bushy and dense with protecting thorns. 18 to 24 in. plants, 50c each.

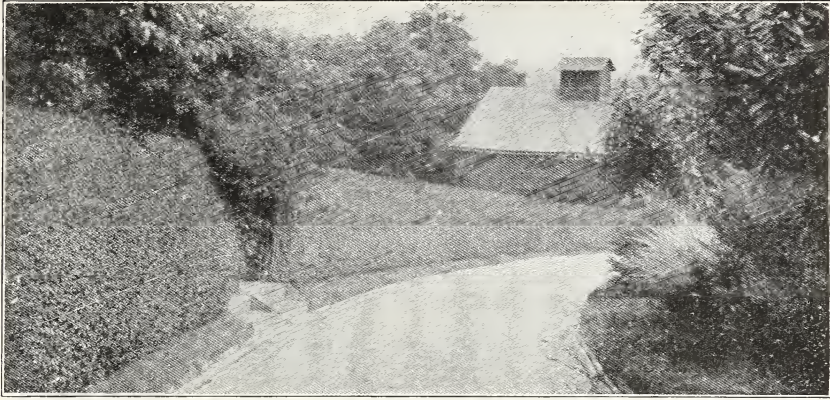
Rose Rugosa—3 to 5 ft.. This rose is very popular; used as a shrub it is fine; the foliage is refined and charming all summer; blossoms large, single, produced throughout the summer, followed by crimson fruits. Very hardy; red flowers. 18 to 24 in. plants, 60c each.

Sumac Cut Leaf (Rhus Typhina)—Grows 6 to 10 ft. A very striking plant of moderate size, with deeply cut leaves resembling fern leaves; dark green, turning to rich red in fall; red, impressive fruit in fall and winter. 2 to 3 ft., 50c each.

Sumac Smooth (Rhus Glabra)—Grows 5 to 8 ft. Beautiful leaves which color brightly in the fall; flowers in July followed by crimson or bronze fruit. 3 to 4 ft. plants, 45c each.

Snowball (Viburnum Sterilis)—Grows 6 to 8 ft. The common snowball, which blooms the last of May, with lovely white balls of flowers. 2 to 3 ft. plants, 60c each.

Syringia (Mock Orange)—Grows 6 to 8 ft. Vigorous habit, very hardy, with large, handsome foliage, and fragrant white flowers in June. 2 to 3 ft. plants, 50c each.



Privet Hedge

When 10 or more shrubs are ordered, deduct 5c from the price of each shrub.

Strawberry Tree (*Euonymus Europaeus*)—Grows 5 to 7 ft. One of the finest varieties grown; bark, light green; foliage changes to brilliant colors in fall; spreading in growth. A fine shrub. 2 to 3 ft., 50c each.

Syringa Lemoine—Flowers large, semi-double; white. Bush of dwarfish habit. One of the best of our dwarf spring flowering shrubs. 2 to 3 ft. 50c.

Snowberry White (*Symphoricarpus Racemosus*)—Grows, 3 to 5 ft. Very small rose colored flowers in June, followed by clusters of milk white berries which remain far into the winter; very pretty winter shrub. 2 to 3 ft. plants, 50c each.

Snowberry Red (*Symphoricarpus Vulgaris*)—Grows 3 to 5 ft. Very much like above, but the berries are red and smaller; sometimes called Indian Currant or Coral Berry. 2 to 3 ft. plants, 45c each.

Spirea Van Houttei (*Bridal Wreath*)—Grows 4 to 6 ft. One of the most beautiful and common shrubs; an immense bloomer. Pure white flowers early in the summer. 2 to 3 ft. plants, 40c each. 18-24 in. plants, 35c each. 12-18 in. plants, 25c each. (Specials, page 20).

Spirea Ballardii—Grows 4 to 5 ft. Pink flowers, in large spikes; upright in habit, with red brown branches, dull green foliage. 2 to 3 ft. plants, 45c each.

Spirea Ballardii Alba—Same as the above, but the bloom is white. 2 to 3 ft. plants, 50c each.

Spirea Anthony Waterer—Grows 2 to 3 ft. Dwarf. Flowers, bright crimson; free bloomer, best late in the summer; flowers in round, flat-topped clusters; foliage, light green. 12 to 18 in. plants, 50c each.

Spirea Collosa Alba—Grows 1 to 2 ft. White flowers in large, flat-topped clusters; blooms most all summer. 12 to 18 in. plants, 45c each.

Spirea Golden (*Opulifolia Aurea*)—Grows 5 to 8 ft. Upright habit; white, heavy flower umbels in June; old flowers turn to dark red or brown; young foliage, light yellow, turning to dark red or bronze in fall. 3 to 4 ft. plants, 50c each.

Spirea Froebeli—Dwarf, similar to Anthony Waterer but grows a trifle taller with broader leaves. 18 to 24 in., 50c each.

Spirea Arguta (*Snow Garland*)—A slender shrub 3 to 5 ft. high, with branches a snowy mass of white flowers in early May. 18 to 24 in., 60c each.

Spirea Thunbergii—Grows 3 ft. Fine, slender leaves and branches, with its profuse blossoms in May. 12 to 18 in. plants, 50c each.

Tamarix African—Grows 4 to 6 ft. Fine, feathery, green foliage; pinkish white blooms in June; very picturesque plant. If cut back each year, will make much nicer foliage. 2 to 3 ft. plants, 45c each.

Tamarix Blue (*Glauca*)—Very much like the above, but the foliage is a delicate misty blue color. 2 to 3 ft. plants, 45c each.

Tree of Heaven (*Ailanthus*)—10 to 15 ft. More of a tree than a shrub, but when cut back each year makes a very desirable shrub. Hardy and very rapid grower. Tropical foliage, long, fern-like leaves; good for background of other shrubs. 5 to 6 ft. plants, 75c each.

Weigelia Eva Rathke—Grows 3 to 4 ft. The most distinct and one of the most attractive varieties. Flowers deep carmine red. 2 to 3 ft. plants, 75c each.

Weigelia Candida—Flowers pure white and produced in great profusion in June and at intervals throughout the summer. 18 to 24 in., 50c.

Weigelia Rosea—4 to 6 ft. A tall growing variety, with deep pink flowers in great profusion during June, and at intervals through the summer. 2 to 3 ft., 50c each.

Special Shrubs



Shrubbery Furnished by Us (first year)

SPECIAL SHRUBS

We offer on this page smaller size shrubs in the most popular kinds. They are good strong plants well rooted, but of smaller size. One can make a large planting, using these shrubs, at a very low cost. These are the same varieties as listed in the larger shrubs.

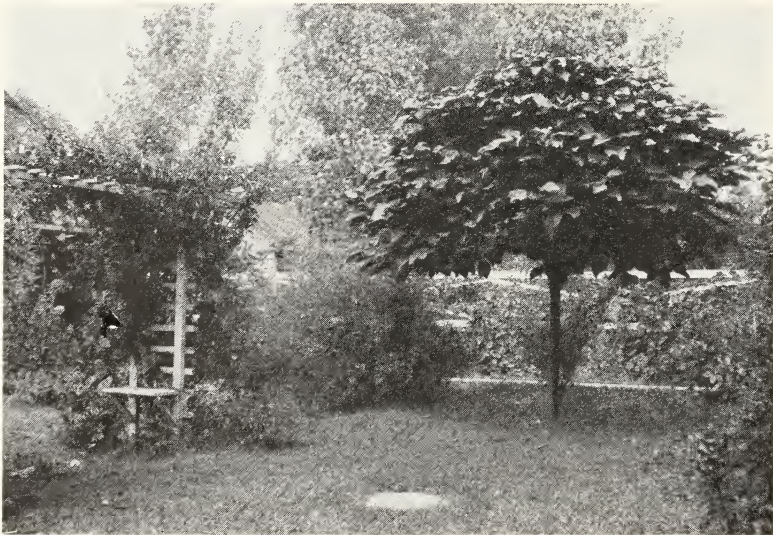
If wanted by mail add for 1 plant 3c; 2 to 6 plants 6; 6 to 12 plants, 10c.

Barberry Thunbergii—For hedges or foundation planting. 10 to 12 in., 10c each; \$1.00 per 12.

Privet Amoor River—For hedges and screens, can be trimmed to any height. 12 to 14 in., 10c each; \$1.00 per 12. 12 to 18 in., 15c each; \$1.50 per 12.

Spirea Van Houttei—For hedges and foundation planting, goes fine with Barberry. 12 to 18 in., 10c each; \$1.00 per 12.

Multiflora Rose—Good for rose hedge or shrubbery border. 12 to 14 in., 10c each; \$1.00 per 12.



Shrubs Furnished by Us (2nd year)

EVERBLOOMING HYBRID PERPETUALS

Our Roses are all hardy field grown bushes; grown here at our Nursery and will be full of flowers the first year. They are not to be compared with the small potted roses sometimes offered. We grow the varieties most adapted to this climate, all of these varieties went thru the 26 below zero weather safely last winter; with a good protection of leaves.

In our Special Collection we are offering our most popular varieties, in a good assortment of colors, at a very low price.

Large two-year, field grown bushes. These Roses will bloom the first year. 75c each; \$4.00 for 6; \$7.50 for 12. Postage 6c for 1; 12c for 6.

American Beauty—A hardy rose, of the largest size, having the ever-blooming qualities of the tea roses; it is the sweetest of all roses; the color is a deep, brilliant rose, shaded to a rich carmine.

Baby Rambler—The original dwarf form of crimson Rambler. The wonderful persistency of its bloom makes it one of the choicest plants in cultivation for summer bedding, and as an edging to borders of shrubs, roses or perennials, it has no equal.

Frau Karl Druschki—A pure, paper-white, large sized and free flowering. The bloom is perfect in form on fine, long stems.

Gen. Jacqueminot—One of the most popular of the red roses, brilliant crimson, large bloom, fragrant and hardy.

Magna Charta—A general favorite, prized on account of its strong, upright growth and bright, healthy foliage, as well as for its magnificent bloom. The color is a beautiful bright pink.

Paul Neyron—Deep, shining rose, very fresh and pretty. Flowers large, often measuring five inches in diameter. The buds always develop fine, perfect roses.

Prince de Rohan—Very dark, velvety crimson. A prolific bloomer and flowers are of excellent form and size.

Rugosa Rose—A single red rose blooming at intervals thru the summer. Used more as a shrub.

Has dark rich foliage, oddly wrinkled and remarkably free from insects. Is absolutely hardy and is much used for foundation planting or in the shrubbery border. Flowers are followed by large red berries. 2 to 3 ft., 60c each.

Soleil de Or—A fine, hardy out door rose, especially valuable because of the rare color; gold and orange yellow, varying to ruddy gold, suffused with nasturtium red.



Gruss an Teplitz

HYBRID TEA ROSES

Gruss an Teplitz—Color a rich scarlet, shading to velvety crimson; very fragrant; a free, strong grower, and the most profuse bloomer known to us, being covered with flowers the whole season. The foliage is extremely beautiful, all the younger growth being a bronzy plum color.

Los Angeles—A new rose. Buds long and pointed, expanding into fragrant flowers of large size. Very double. A glowing pink shaded with gold. \$1.00 each.

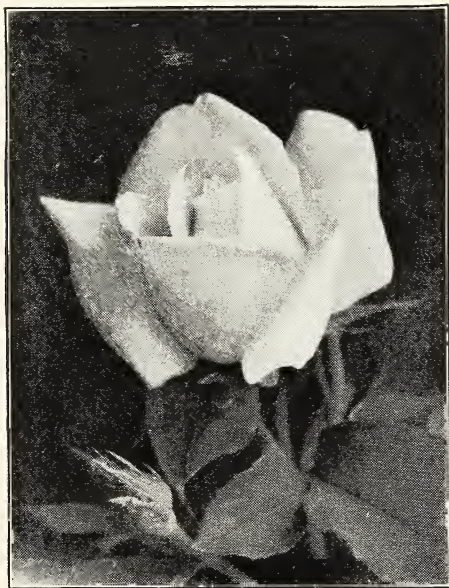
Killarney Pink—Flowers intensely fragrant, long pointed buds. Color a clear pink, excellent for cutting and a good bloomer.

Killarney White—Pure white form of the above and one of our best bloomers. Very fragrant.

Madam Carolina Testout—Large full rich pink flowers. A good bedding rose, free bloomer.

Duchess of Wellington—Color saffron yellow, excellent for cutting as the buds are long and flowers lasting. The best of the yellow tea roses.

Rugosa, Conrad F. Myer—A cross between the rugosa and tea roses, making a very hardy and vigorous grower with large, double, silvery pink blooms.



Frau Karl Druschki

Special Roses

June and Moss Roses

This variety of roses make a vigorous stocky growth and bloom but once a year.

June Rose—Double pink, very hardy; makes large bush. Profuse bloomer early in summer. 50c each.

Crested Moss—Deep pink buds, surrounded by a mossy fringe and crest; exquisitely fragrant. 75c each.

SPECIAL OFFER NO. 1

These roses are all first size, strong two-year bushes.

- 1 General Jacqueminot Red.
- 1 Paul Neyron pink.
- 1 Frau Karl Druschki white.
- 1 Soleil de Or yellow.
- 1 American Beauty red.
- 1 Killarney Pink.
- 1 Killarney White.
- 1 Gruss and Teplitz red.
- 1 Multiflora pink, climbing.

Regular price \$6.45

Our special price \$5.00

Postage 15c.

SPECIAL OFFER NO. 2

These roses are same varieties and same number, but are the second size.

Regular price \$3.60

OUR SPECIAL PRICE \$2.75

Postage 12c

To obtain the best results Roses should be planted in beds, and in the winter cut off six inches above the ground and covered with about six to eight inches of leaves, this to be taken off in the spring, and the bed fertilized and well cultivated.

ROSES

Price 40c each; \$4.00 per 12.

We offer the following two-year field grown roses which are the second size. They are of lighter weight than our regular grade, but are nice strong bushes and will bloom the first year.

The description of these varieties is on page 21.

General Jacqueminot—red.

Paul Neyron—pink.

Magna Charta—pink.

American Beauty—red.

Frau Karl Druschki—white.

Soleil de Or—yellow.

Prince de Rohan—Drk. red.

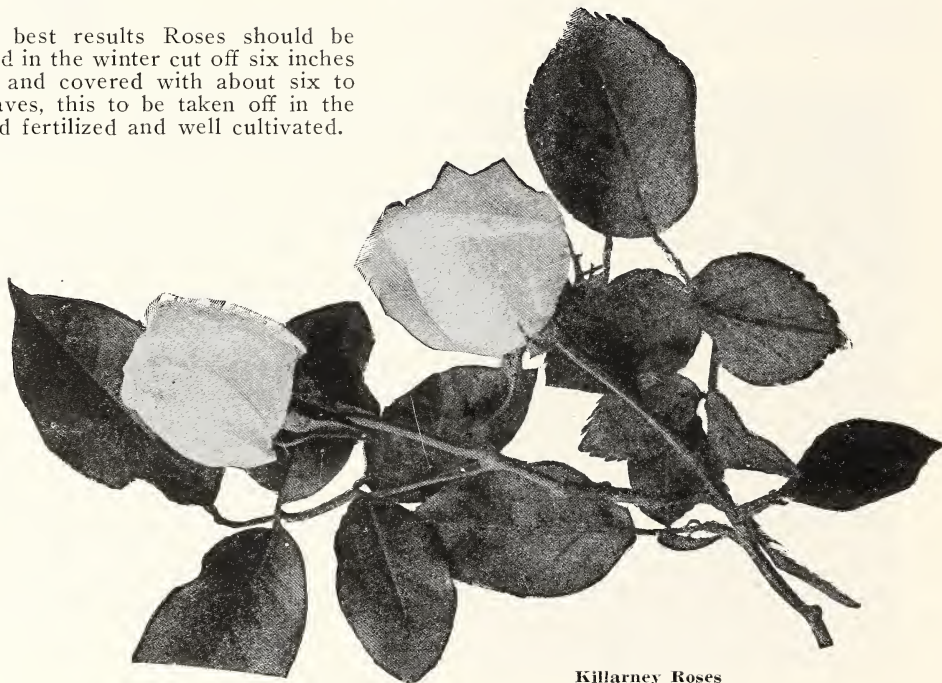
Pink Killarney—pink.

Gruss and Teplitz—red.

Mason City, Ill.

Your Nursery Stock is sure fine. I believe it the best I ever bought.

L. G. Kiesling.



Killarney Roses

CLIMBING ROSES

Large two-year, field grown vines, 60c each

Silver Moon—Flowers very large; semi-double; silvery white with heavy yellow stamens. The best white climbing rose. 75c each.

Climbing Americian Beauty—Much like the bush form of this name except it has the climbing habit.

Ercelsa (Red Dorothy Perkins) — A radiant, blood-red cluster rose. The clusters are very large and fairly cover the vines. It is best to plant this variety where crimson rambler is not hardy.

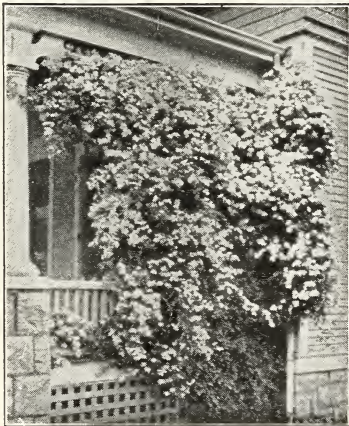
The Illinois Rose (Rosa Setigera)—Large single, pink, blossoms in July; beautiful foliage, absolutely hardy. The stems turn red in winter, which together with quantities of crimson fruit, produce a charming winter effect.

Crimson Rambler—It is a vigorous grower; flowers glowing and produced in immense panicles.

Climbing Gruss an Teplitz—An exact counterpart of the bush Rose Gruss an Teplitz. Color, velvety crimson.

Dorothy Perkins—Beautiful shell pink, full and double; large size for a cluster rose; it is a hardy, strong grower.

Prairie Queen—The flowers are very large and of peculiar globular form; bright, rosy red; changing to lighter as the flowers opens. Of strong, rapid growth.



Paniculata

Thousand Beauties (Tausendschon)—Colors of every imaginable shade, from pure white to deep pink. Almost thornless.

Multiflora Rose—Double, pink; strong grower; very hardy, profuse bloomer. Good where shade is wanted also where other Roses fail to grow. 45c each.

CLIMBING VINES

Strong two-year, 35c each

Honeysuckle, Scarlet Trumpet — One of the handsomest in cultivation; coral flowers; very vigorous and hardy; blooming all summer.

Trumpet Vine (Tecoma Radicans)—Handsome, dark green foliage and showy clusters of orange and scarlet flowers during the summer.



Illinois Rose

Bittersweet—A native vine that is especially ornamental in fall and winter, with brilliant orange and scarlet fruit.

Chinese Matrimony Vine — A strong, hardy climbing vine. Bright, rosy-purple flowers, followed by brilliant scarlet berries.

Wisteria (Purple)—One of the finest climbers, of rapid growth, and perfectly hardy, with long, pendulous clusters of bluish purple. Flowers in June.

Engleman's Ivy—It is one of the finest ivies we have. The brilliant coloring of the leaves in autumn, together with perfect hardiness, makes it a valuable climber for covering brick or stone walls. Where hardiness is necessary, the Engleman will be found much superior to Boston ivy.

American Ivy—The well known native vine with the five parted leaves, that change to rich crimson in autumn; berries blue black; very rapid grower and perfectly hardy.

Postage on all plants on this page, 6c for 1 to 3 plants; 8c for 3 to 6 plants.

CLEMATIS

2 years

Jackmanii—A very profuse blooming variety, with flowers from four to six inches in diameter; of an intense violet purple color, borne successionaly in continuous masses on the summer shoot. 75c each.

Henryii—Large, pure white flowering. 75c each.

Paniculata—A strong, vigorous grower; very free flowering; pure white; unusually fragrant. 50c each.

PERENNIALS

Perennials have never been so popular as at the present time. Once planted and always there. The great variety of color and the blooming period which extends from May until frost make perennials very desirable for all forms of planting. We offer a large assortment of one and two years field grown plants. Perennials can be planted from April 1st to May 15th, or about the middle of September in the fall. Perennials can be sent by express or parcel post and should be planted as soon as received.

If wanted by Parcel Post add 6c for 1 to 5 plants; 8c for 6 to 10 plants; 10c for 10 to 12 plants. If within 300 miles of our nursery.

Blazing Star—Showy purple flowers in long spikes, very effective among other perennials or shrubs; foliage grass like; blooms in August and September. 15c each.

Bleeding Heart — Charming hardy perennial plant with much cut foliage. Pink flowers of interesting structure. One of the choice members of old-fashioned gardens. 50c each; \$5.00 per 12.

Butterfly Bush (Buddleia Variabilis Magnifica)—Often called summer lilac. This shrub from a young plant set out in the spring will mature to full size the first summer, making a handsome bush. It produces tapering pinnacles of beautiful lilac colored flowers on long, graceful stems. Strong field grown plants, 50c each.

Chrysanthemum (hardy)—Will flower successfully in any garden and will furnish an abundance of bloom in September and October after all other flowers are gone.

Pink—Flowers borne in great masses each flower 2 to 2½ in. across.

Yellow—Flowers borne in great masses, each flower 2 to 2½ in. across.

White—Flowers borne in great masses, each flower 2 to 2½ in. across.

Bronze—Bronze colored flowers, 1 to 1½ in. across.

25c each; 3 for 50c; \$1.75 per 12.

Canterbury Bell—One of the most beautiful of the old fashioned garden plants. Has tall spikes of delicate white, pink, or blue bell shaped flowers in June; 20c each; \$2.00 per 12.

Columbine (Aquilegia) Long Spurred Hybrids—A new form of an old favorite. The graceful spurred flowers on two foot stems are valuable for cutting. Colors range from white and yellow to blue. Bloom in early spring; mixed colors; good two year plants 15c each; \$1.50 per 12.

Coreopsis—A hardy easily grown perennial blooming all summer. The daisy like rich, golden yellow flowers on long stems are unexcelled for cutting. 15c each; \$1.50 per 12.

Desmodium Penduliflora—A shapely, pretty leaved, semi-herbaceous shrub from 2 to 4 ft. high; literally covered in autumn with long drooping racemes of lavender flowers. Should be in every garden. 50c each.

Delphinium (Perennial Larkspur)—If we could have but one plant in our garden it would be one of these. Their greatest charm lies in their state-

ness of growth and the beautiful blue of their flowers. Very hardy and easy to grow. Sky blue and dark blue flowers on four foot stems, blooming in July and again in the fall. 20c each; \$2.00 per 12.



Canterbury Bell

Fox Glove (Digitalis) — Stately old fashioned border plant growing 3 to 4 ft. high with handsome thimble shaped flowers on long spikes; mixed colors, 20c each; \$2.00 per 12.

Golden Rod (Canadian)—The spray of perennial gold terminating each year's growth is on a stem 3 to 5 ft. high. September and October. 15c each; 2 for 25c.

If wanted by Parcel Post add 6c for 1 to 5 plants; 8c for 6 to 10 plants; 10c for 10 to 12 plants. If within 300 miles of our Nursery.

Golden Glow—Hardy clear yellow flowers produced in great quantities on long stems. Resemble golden Cactus Dahlias. Bloom in July and August. 15c each; \$1.50 per 12.

Gallardia (Blanket Flower)—The most glorious of our old fashioned flowers. Perfectly hardy and will stand much neglect. Blooms continually from June to October. Flowers crimson bordered with orange. 15c each; \$1.50 per 12.

Hibiscus (Meehan's Mallow Marvels)—A magnificent new strain of hardy Mallows which for size and profusion of bloom, and richness of coloring are among the most striking and beautiful perennials that grow. Flowers 8 to 10 inches in diameter. Bloom in July and August when flowers are scarce. Separate colors—Red, white, and pink. 35c each. Postage on 1 plant 6c and add 1c for each additional plant.

Lily of the Valley—Small white flowers, very fragrant. Will grow in shady, cold ground where grass will not do well. 70c per 12.

Lily Day—Yellow, very hardy. Grows 1 to 1½ ft. 10c each.



Coreopsis



Iris Planting

IRIS

German Iris

Besides their usefulness in Landscape planting these flowers are very popular as cut flowers. Valuable for cemetery plantings as they are sure to be in bloom Memorial Day if the season is so late Peonies are not out.

Dwarf Blue—Splendid for edging flower beds or walks. Grows 6 in. tall.

Gertrude—Clear Blue. Grows 1 to 2 ft.

Parsiensis—Purple. Grows 2 ft.

Aurea—Light yellow. Grows 2 ft.

15c each; \$1.50 per 12.

Japanese Iris (Kampferi)

Everyone who has seen these beautiful flowers wants several plants. Flowers are rather flat and much larger than the common Iris. Bloom in June and July after German and Siberian Iris are gone. Colors—Cream, white, purple and blue. 30c each; \$3.00 per 12.

Siberian Iris

Bloom in June, between German and Japanese Iris, (white only; 15c each; \$1.50 per 12.)

If wanted by Parcel Post add 6c for 1 to 5 plants; 8c for 6 to 10 plants; 12c for 10 to 12 plants. If within 300 miles of Nursery.



Flower Garden at Nursery.

Hollyhocks—One of the best hardy garden flowers for border or back ground, grow 5 ft. to 7 ft. Double, red, pink, white. 15c each; \$1.50 per 12.

Pyrethrum (Painted Daisy)—A group of graceful free flowering plants ranging in color from white to crimson. Bloom practically all summer but are at their best in June. 15c each; \$1.50 per 12.

Poppy Oriental — For gorgeous coloring the Oriental Poppies have few rivals among hardy plants. They produce a magnificent effect in the Herbaceous border. Bloom in May and June. 3 to 4 ft. Scarlet with black center, orange with black center. 25c each.

Sweet William (Dianthus Barbatus)—The striking colors, pleasing fragrance, and freedom of bloom make Sweet William a favorite with all lovers of hardy flowers. They are at their best in solid beds or as border for walks or drives. Grow 12 to 18 in. 15c each; \$1.50 per 12.

Shasta Daisy (Alaska)—A much improved hardy daisy. Flowers large, snow white with yellow center. An excellent cut flower. Good plants 15c each; \$1.50 per 12.

Veronica (Speedwell)—A two foot border plant with attractive foliage. Flowers are borne abundantly in July and August on compact spikes. Deep indigo blue color. 15c each; \$1.50 per 12.

Yucca—A tropical looking plant with long narrow leaves; the flower stocks rise from the center about three feet high, and are covered with creamy white bell-shaped flowers forming a perfect pyramid; perfectly hardy, the leaves staying green all winter. Strong 2 year plants, 35c each. Postage on 1 plant, 6c, each additional plant add 1c per postage.

Sedum Brilliant—A new form of the old fashioned Live Forever. Has large flat heads of bright red flowers in June and July. Very showy. 25c each.

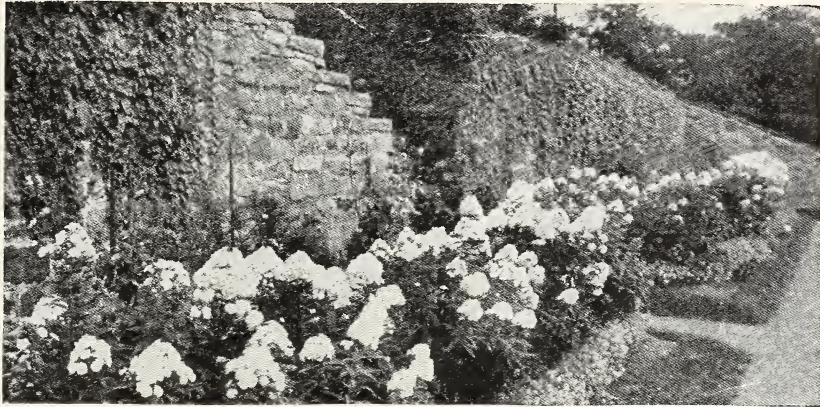
HARDY ASTERS

Beauty of Colwell—One of the best; in its prime during September when the 3 to 4 foot, branchy plants are literally covered with semi-double flowers of Ageratum-blue. 20c; \$2.00 per dozen.

Novi Belgii—Plant is dense, bushy, about 30 inches high, with very ornamental fine cut, dark green foliage. Unlike most top blooming sorts, this variety blooms profusely clear up from the ground; delicate pasted pink. 20c each; \$2.00 per dozen.



Shasta Daisy



Hardy Phlox Planting

HARDY PHLOX

Strong plants which will bloom the first year.
25c each; \$2.50 per 12

Beauty and usefulness bring these hardy border plants among those of greatest importance; succeeding in almost any soil or position yet they respond quickly to liberal cultivation. Their flowering season begins in July and when the old bloom spikes are removed extends to late fall. The varieties we offer include the most desirable kinds and cover a wide range in color.

Miss Lingard. Waxy white with faint lavender eye, very large flower. Earliest of all and best for cutting.

Bridesmaid—White with distinct red eye, large flower.

Ferdinand Cortez—Deep crimson; best red phlox.

Iris—Pink, very fragrant.

Ryndstrom—Beautiful shade of rose—pink, much like Paul Neyron rose; flowers very large.

R. P. Struthers—Bright rosy red with claret red eye, a very popular variety.

Rhineland—New variety; salmon pink with claret red eye. Flower and trusses large.

Rosenberg—Reddish violet with blood red eye, very large.

Sunset—Dark rosey red.

Terra Neuva—Lavender with a light center.

Special Offer—Ten Phlox one each of above varieties \$2.00.

What to Plant and Where to Plant It

For Foundation Plantings.

Low growing shrubs for small houses or in front of taller shrubs.

Spirea, Anthony Waterer	Yellow Kerria
Spirea, Frobeli	Spirea, Thunbergii
Barberry, Thunbergii	Spirea, Collosa Alba

Medium Growing Shrubs

Spirea, Van Houttei	Kerria, White
Hydrangea P. G.	Snowberry, Red
Hydrangea Hills of Snow	Snowberry, White
Dogwood, Red	Rugosa Rose
Dogwood, Yellow	

Evergreens for Foundations.

Arbor Vitae	Oriental Arbor Vitae
Globe Arbor Vitae	Mugho Pine
Pyramidal Arbor Vitae	Red Cedar

For Hot Sunny Places.

Spirea Van Houttei	Barberry
Calycanthus	

Shrubs for Shady Places.

Barberry	Red Snowberry
Privet	White Snowberry
Flowering Currant	

For Cemeteries

Peonies	Hydrangea
Iris	Baby Rambler Roses
Shasta Daisy	Yucca

For Winter Effect.

Red Dogwood	White Snowberry
Yellow Dogwood	H. B. Cranberry
Yellow Kerria	Hills of Snow Hydrangea
Barberry	Rugosa Rose.
Red Snowberry	

Home Beautifying Booklets.

For more complete information send for a copy of our Home Beautifying Booklet, which gives complete planting plans for all types of medium sized homes. The price is 10c per copy.

SPRING BULBS and ROOTS

PEONIES

Strong 3 year roots.

Postage 6c on 1 plant and add 1c for each additional plant.



Festiva Maxima

Delicatissima—A Dark Pink, very double; Best for Decoration Day. 50c each.

Rose Fragrant—Light Red, very fragrant, late. 40c each; \$4.00 per 12.

The most popular of hardy plants. The flowers are very large and attractive; hardy as an oak; once planted they will take care of themselves. The following list are all good, double flowering varieties:

Lucretia—Buds light pink changing to white as flower opens; Extra good grower and bloomer. 40c each; \$4.00 per 12.

Festiva Maxima—Immense blooms, double, pure white, delicate tinge of cream in center and usually a few small flakes of crimson. The most popular peony grown. In great demand for cut bloom. An ideal white. 50c each.

Floral Treasure—Delicate Shell Pink; rose type; fragrant; midseason; blooms freely. 40c each; \$4.00 per 12.

Mrs. Cleveland—Very delicate pink, good bloomer. 40c each; \$4.00 per 12.

Officinalis Rubra—Earliest Peony of all, bright crimson. 75c each.

Felix Crouse—Very brilliant red, flowers large, globular and free bloomer, late mid-season, one of the best red peonies. 75c each.

CANNAS

Strong Bulbs, 15c each; \$1.50 per 12 except as noted.

By mail add 4c for 1 to 3 bulbs; 6c for 3 to 6 bulbs; 10c for 6 to 12 bulbs.



ROSEA GIGANTEA

Of rapid growth and tropical appearance throughout the summer. They present a mass of gorgeous colors. The following varieties are among the best. Good quality bulbs.

Red King Humbert—4 ft. Bronze leaves. Flowers scarlet color, very large. The best of the bronze leaved varieties.

Florence Vaughn—4½ ft. Green foliage. Flowers rich golden yellow, spotted with bright red. Extra good bloomer.

Hungaria—3½ ft. Very compact, almost

dwarf. Leaves bluish green; flowers very large; color pale pink with satin sheen. 25c each; \$2.50 per 12.

Orange Bedder—4 ft. Green foliage; orange color, with just enough scarlet suffusion to intensify the dazzling mass of color; free bloomer.

Eureka—3 ft. Pure white flowers; free bloomer.

Yellow King Humbert—4 ft. Has very large yellow flowers, softly spotted with bright red. Green leaves.



GLADIOLIS

10c each; 75c per 12, No. 1 bulbs. Postage 4c per 1 to 3 bulbs; 6c for 3 to 8 bulbs; 8c for 8 to 12 bulbs.

Gladiolis are most attractive and useful for cut flowers. Everyone who loves flowers should plant a few of these popular bulbs.

Should be planted about the first week in May. We offer some of the best varieties—strong bulbs.

America—Beautiful, soft flesh-pink; faintly tinged with lavender.

Baron Hulot—Rich, deep indigo blue. Besides being the only blue Gladiolus known, it is a really very fine sort.

War—Considered by many the best commercial blood-red to date. Its flowers are of immense size in long spikes, and borne freely. Late.

Schwaben—One of the old favorites; pure canary yellow, shading to soft sulphur yellow; a sturdy grower.

Mrs. Francis King—Brilliant Vermilion scarlet. A popular and effective variety for all occasions. Large size.

Chicago White—White with lavender marking in throat. One of the earliest varieties to bloom.

Panama—Clear pink, large flowers set well on stem.

Mixture of above colors, 75c per 12.

Standard Mixture—Good varieties mixed. Recommended to those who desire good flowers without especial reference to color effect. Good size bulbs. 50c per 12.

DAHLIAS

Strong field grown divisions. 20c each; \$2.00 per 12. Postage, 4c for 1 to 3 bulbs; 6c for 3 to 8 bulbs; 8c, 8 to 12 bulbs. Our bulbs bloomed extra fine last fall.



Dahlias

Electric—(Show). Tall growing, bright yellow, very heavy bloomer; fine variety.

Caecelia—(paony). Cream to white, large semi-double variety measuring five to seven inches across.

Delice—(decorative). A wonderful pink shade good bloomer, flowers large.

Dreers White—(show). White shading to pink at center; fine bloomer and showy.

Jeanne Charmet—(decorative). Lavender, very large, fair bloomer, desirable on account of its wonderful shade.

Libelle—(cactus). Lavender, large bloom with pointed petals.

Little Bessie—(pompon). White, small bloom very compact, resemble a small white ball.

Storm King—(show). White, very large fine bloomer, has a slight tinge of pink.

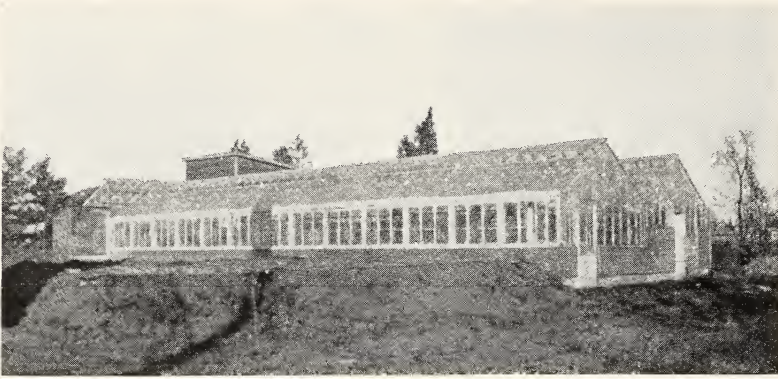
Countess of Laudensdale—(decorative). Dark pink, almost a salmon, very large, good bloomer.

Zulu—(Decorative). Dark velvety red, very fine and a heavy bloomer.

Variegated—(decorative). Red and white, a good bloomer.

Collection No. 1. 12 Dahalias selected from above list including red, yellow, white, pink and lavender, our best varieties for \$1.75.

Greenhouse Department



Our Green House Under Construction

This Department is new, as we built the Greenhouse the past summer. We will have a good assortment of summer Bedding Plants, Blooming House Plants, Vines and Plants for Boxes and Baskets, and Cut Flowers.

Plants are from two and two and one-fourth inch pots unless otherwise specified.
Postage 1 plant 4c; 2 to 4 plants 6c; 4 to 8 plants 8c; 8 to 12 plants 12c.

	Pot Size	Each	Doz.
Ageratum, blue	2¼ in.	10c	\$1.00
Asters Lavender, pink and white seedlings.....			.35
Plumosa Ferns for baskets and boxes.....	2¼ in.	15c	1.50
Plumosa Ferns for baskets and boxes.....	4 in.	35c	3.50
Sprengerii Ferns for baskets and boxes.....	2¼ in.	15c	1.50
Sprengerii Ferns for baskets and boxes.....	4 in.	35c	3.50
Dusty Miller, border plants.....	2¼ in.	10c	1.00
Foliage plants all colors.....	2¼ in.	10c	1.00
Carnation Plants, Red, Pink, White.....	3 in.	20c	2.00
Geraniums, Red	2¼ in.	10c	1.00
Geraniums, Red	4 in.	20c	2.00
Geraniums, Pink	4 in.	25c	2.50
Geraniums, White	4 in.	25c	2.50
Pansies, fine plants—Seedlings.....			.35
Petunias, Giant singles.....	2¼ in.	10c	1.00
Petunias, Giant doubles.....	2¼ in.	15c	1.50
Salvia	2¼ in.	10c	1.00
Verbenias mixed colors.....	2¼ in.	10c	1.00
Vincas, much used vine for baskets and boxes.....	2 in.	10c	1.00
	2½ in.	15c	1.50
	4 in.	25c	2.50
Hanging baskets filled with plants.....			\$1.00 to \$2.50 each

Vegetable Plants

Cabbage early	10c	per doz.
Cabbage late	10c	per doz.
Tomatoe Earliana early.....	10c	per doz.
Tomatoe Ponderosa midseason.....	10c	per doz.
Tomatoe Stone late.....	10c	per doz.
Tomatoe Transplants	25c	per doz.
Cauliflower	20c	per doz.
Pepper Sweet	20c	per doz.
Egg Plants	25c	per doz.
Celery	15c	per doz; \$1.00 per 100

BLUE GRASS

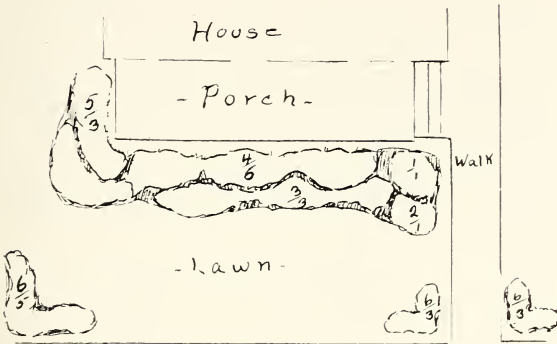
Blue Grass—45 cents per pound. Sow one pound for three square rods. This is the best lawn grass; sow in April and rake in well.

Our grass seed is of the highest quality and is not to be compared with the cheaper kinds. **Postage 6c for 1 lb. and add 1c each additional lb.**

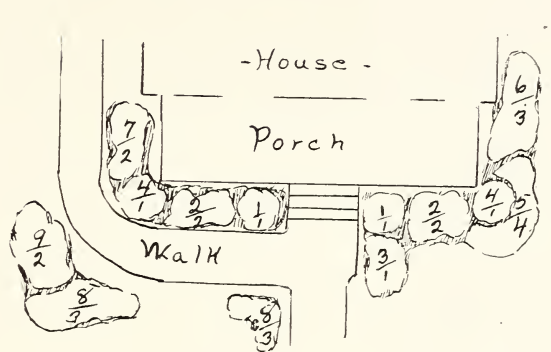
To assist our Customers in arranging their shrubbery, we have drawn two plans for planting shrubs around the porch. One where the steps are at the side and one when the steps are at the center. We have also drawn a plan for a fifty foot shrubbery border.

If you want further help, send us a sketch of your grounds giving exact measurements and explaining where you want the planting done, we will draw you a plan free of charge. These sketches must be sent in before the 20th of March as we don't have time to draw the plans after that. Send a picture of your house with the sketch.

Planting Plan for a House with the entrance at the end of the porch



Plan No. 1



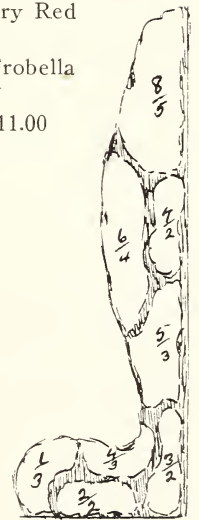
Plan No. 2

The Plan Number is the top number, the bottom number the amount of shrubs of that variety used in that place.

Plan No.	Shrubs
1	1 Hydrangea P. G.
2	1 Spirea Frobella
3	3 White Snowberry
4	6 Barberry
5	3 Spirea V. H.
Corners	
6	11 Barberry
24 Shrubs for \$9.00	

Plan No.	Shrubs
1	2 Hydrangea Hills of Snow
2	4 Snowberry White
3	1 Spirea Frobella
4	2 Hydrangea P. G.
5	4 Spirea Frobella
6	3 Barberry
7	2 Snowberry Red
Corners	
8	6 Spirea Frobella
9	2 Barberry
26 Shrubs for \$11.00	

Plan No. 3 Fifty foot Shrubby Border.		
Plan No.	Shrubs	
1	3	Spirea Frobella
2	2	Hydrangea P. G.
3	2	Spirea Van Houttii
4	3	Spirea Ballardii Pink
5	3	Golden Bell
6	4	Barberry
7	2	Honeysuckle Tart
8	5	Red and Yellow Dogwood
Total		24 Shrubs for \$10.00
6 asst. Iris free with this Shrubby Border.		



SCALE 20 FT. = 1 IN.
Plan No. 3

GENERAL INFORMATION

PRICES HEREIN CANCEL ALL PREVIOUS PRICE LISTS

LOCATION—We are located midway between Galesburg and Rock Island, and about midway between Galva and Burlington, on the C. B. & Q. R. R., therefore can ship in any direction.

Our grounds are located opposite the depot, our office and packing sheds adjoining the tracks, which makes delivery very convenient and without delay.

SHIPPING—We have extra good shipping facilities. Four local freights and eight express trains each day. We will ship all small packages by Express or Parcel Post, and recommend the larger packages to be sent by Express, even if the cost is a trifle more than freight, thus insuring immediate delivery.

PARCEL POST—The parcel post service is now improved so we can send packages up to 50 lbs. On distances up to 350 miles, parcel post is cheaper than express, but over this distance express is little the cheaper.

We have a parcel post department in which we list trees and plants in sizes that can go by parcel post. Kindly use this department when stock is to be shipped in this manner. **DO NOT FORGET TO ADD POSTAGE.**

Please do not ask us to send trees larger than we list in this department by parcel post, as the post office will not accept them, and therefore will cause a delay in getting your order started.

TERMS—Cash or satisfactory references from unknown parties before shipment.

PACKING—These prices are for well packed stock, and delivered to the rail road station at ALPHA.

MISTAKES cheerfully corrected, but no claims allowed unless made within seven days after shipment is received.

GUARANTEE—We guarantee all Nursery stock to be true to name, and should any prove not, we will return the amount paid for such stock, or replace with stock that is true, but we are not liable for damages other than herein named.

REPLACING—We do so at one-half the original price on fruit trees and shrubs, providing a list of the varieties that did not grow is sent to us within four months after the stock is received. Otherwise we do not.

RATES—Six at dozen, 50 at 100 rates, unless otherwise stated. This applies to trees, plants, etc., of any one class having a common price.

SHIPPING TIME—Spring shipments start about the first week in April and continue until last of May. Fall shipment starts about the middle of October and continues until freezing weather.

SUBSTITUTION—We desire to follow the customer's wishes and will not substitute unless we are out of the varieties ordered, and then to our best judgment, unless advised otherwise.

DISEASE—Our stock and premises are inspected each year by a State inspector, and a certificate issued, that such are apparently free from all dangerous insects and diseases. A certificate of inspection accompanies each shipment.

INSTRUCTIONS

PLANTING

Tree Planting—Cut all of the side limbs back about one half and shorten the top a little. Prune the roots when broken or split, making a new, clean cut.

Do not expose the roots to sun or air any longer than necessary. Never put manure in the holes next to the roots as it causes decay. Plant strawberries with spade or dibble, spread the roots out fan shape. It is better to cut the roots off than double them up.

Planting—Dig the hole larger than is necessary to admit all the roots in their natural position, keeping the surface soil and subsoil separate. Have the tree held in an upright position while the earth is shovelled in, the best soil being sifted in among the roots. Make sure that all the roots come in contact with the soil. When the earth is nearly filled in, pour in water to wash the soil around the roots; then fill up the remainder and tread down gently with the foot. It is only necessary to use water in dry weather.

Trees and Shrubs should be planted 3 to 6 inches over the top roots, according to the size of the tree or shrub.

Staking—Extra tall trees or those much exposed to the wind should be supported by a stake. Take care that no chafing of the tender bark occurs.

Mulching—After the tree is set, cover the ground within a radius of two to three feet with five or six inches of manure or litter. This mulching is necessary in dry ground and is good practice in spring and fall planting.

Pruning—All fruit trees require more or less pruning from year to year. While the tree is young the head should be formed, and unnecessary branches taken out. The best time to prune is late in the winter or in early spring, when no more severe weather is anticipated.

Table of distances for planting.

Apple	30 x 30 ft.	48 per acre
Pear	25 x 25 ft.	69 per acre
Cherries	16 x 16 ft.	170 per acre
Plum	16 x 16 ft.	170 per acre
Peach	16 x 16 ft.	170 per acre
Currants	4 x 3 ft.	3630 per acre
Goosberries	4 x 4 ft.	2722 per acre
Raspberries	2 x 8 ft.	2100 per acre
Blackberries	3 x 8 ft.	1800 per acre
Strawberries	16" x 4 ft.	8710 per acre
Grapes	6 x 8 ft.	820 per acre

The number of plants required for an acre may be ascertained by dividing the number of square feet in an acre (43,560), by the number of square feet given to each plant.

SPRAYING

Spraying is necessary to have good, clean, large fruit. There are three main considerations in spraying: an effective spraying machine, knowledge of the proper time to spray, and the use of the best quality of material to defeat the enemy.

The principle underlying spraying, is to cover the foliage or wood of plants with a medium so the fungus will not grow, or which will kill the leaf eating insects.

Promptness is the main factor in spraying and most important.

The material we offer is the best in quality we can buy, therefore the prices are a little higher than a cheaper grade of material can be sold for.

LIME SULFUR

Use Lime Sulfur to control San Jose and other Scale, Apple Scab, Peach Leaf and Brown Rot of Cherries and Plums.

For dormant spray—use ten to fourteen lbs. to 50 gallons of water. Smaller quantities 12 to 18 tablespoons to one gal. of water. Apply to Apple, Pear, Peach, Plum and Cherry while buds are swelling and before any leaves are out. (Do not use this proportion when leaves are out as it will kill them).

For summer spray—apply when the leaves start, repeat every 10 to fifteen days until blossoms appear. Use two tablespoons Lime Sulfur and six tablespoons Hydrated Lime to one gal. water or 3 lbs. Lime Sulfur and 6 lbs. Hydrated Lime to 50 gal. water. For all stone and seed fruits except Peach which do not need it.

Prices—1 lb. can \$.35

5 lb. can \$1.25

By express only; can be sent with express shipment of Nursery Stock.

Arsenate of Lead

Use this spray for leaf eating insects, apple worm (codling moth), and all kinds of worms that affect trees, plants, shrubs and vegetables during the summer.

For Apples—1st spray just before the blossoms open. 2nd spray when blossoms are two-thirds off. This is the most important spray for Codling Moth. 3rd spray about two weeks after second spray. 4th spray about first week in August. Use three to four tablespoons to one Gal. of water or 2 to 3 lbs. Arsenate of Lead to 50 gal. of water.

For Peach, Pear, Plum and Cherry, use the first and second spray, the last two are unnecessary. (Use same proportion as above).

For small fruits, vegetables, etc. Spray when the plants show sign of insect attack, use same proportion as above.

Prices—1 lb. can \$.50

5 lb. can \$2.25

By express only or with express shipment of Nursery Stock.

Order Early and be ready to spray at proper time.

LANDSCAPE GARDENING

LANDSCAPE GARDENING or home beautifying has passed being just for a few. Nearly everyone is now beautifying their home grounds with trees, shrubs or plants, or thinking of doing so.

Planting a home is not an expense, but a profitable investment. It pays dividends of satisfaction; it does not require new tires, nor eats gasoline; its value increases with age and never has to be renewed.

We have purchased a new supply of the **HOME BEAUTIFYING BOOKLETS** which have been in such demand the past year, and we are going to let you have these at wholesale price. These booklets are made up especially to assist the amateur to correctly plant his grounds; the plans being made for small and moderate sized homes, and the cost of the shrubs listed is well within the average means. Besides a large assortment of plans this Booklet includes lists and sizes of Ornamental Plants and information for their use. If you are interested in improving the appearance of your home you will find one of these books invaluable. The price is 10c each.



Privet Hedge and Norway Maples

This catalogue contains a large assortment of shrubs, trees and flowers for home planting, large or small. If you have had your home landscaped, we can furnish the plants, and no doubt at quite a saving to you.

We can make planting plans at a very small price, and if the stock is purchased of us, we remit the amount of the plan on the order.

We offer suggestions and help the planter all we can, free of charge.

If you are planning on doing some planting this spring or fall, come to the Nursery and bring a small drawing of your home grounds. We can suggest what shrubs and trees are needed. You can buy them and take them home with you. We invite you to visit our nursery, and you are welcome at any time.

Hundreds of our customers use this service every year.

ALPHA NURSERY, Alpha, Illinois

Nursery Stock of Quality that bears the Choicest