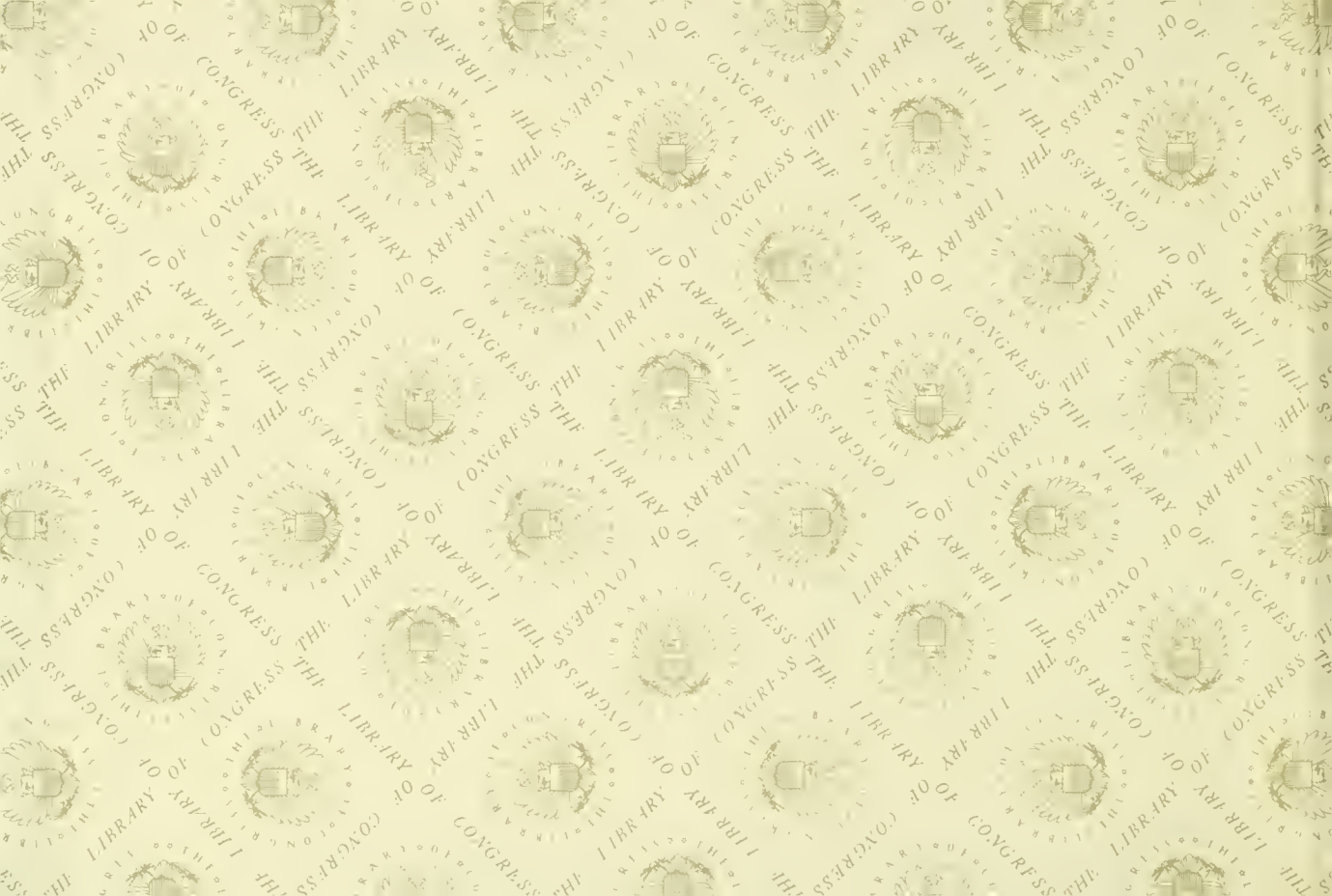


F 87

.B6 B6





BLOCK ISLAND

Hotels, Residences and Places of Interest

Half-tone Illustrations

by

CRAHAN ENGRAVING CO.

193 Westminster Street, Providence, R. I.

PUBLISHED BY DAVID RUBIN

PROVIDENCE, R. I.

Copyright, 1900.

PRINTED BY

SNOW & FARNHAM

63 Washington Street

Providence, R. I.

72235

11447

Library of Congress

TWO COPIES RECEIVED

JUN 27 1900

Copyright entry

June 21, 1900

no. *A. 15383*

SECOND COPY.

Delivered to

ORDER DIVISION.

July 30, 1900



THE FAVORITE OBSERVATION STEAMER MOUNT HOPE.

Providence to Newport, Narragansett Pier and Block Island. Leave Providence Week Days 9 A. M., Sundays, 10 A. M.



PEQUOT HOUSE AND WATER FRONT.



BATHING BEACH.

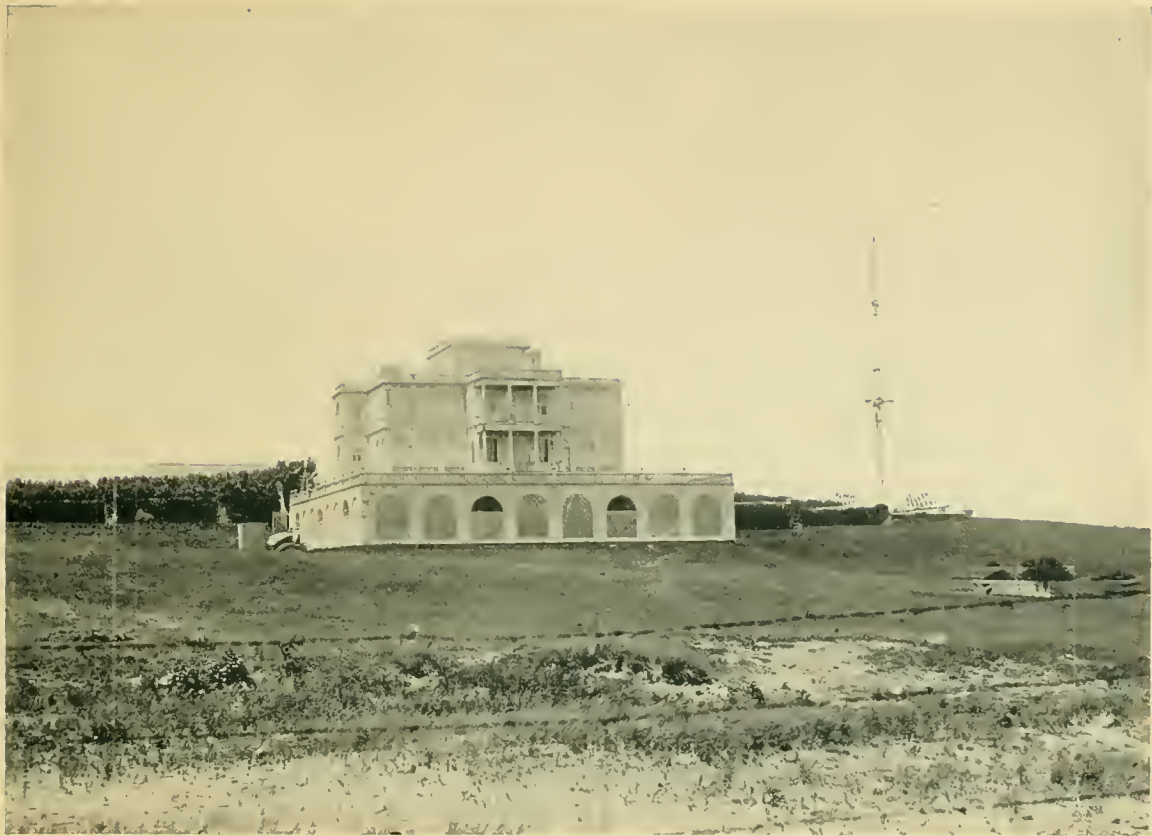


THE HYGEIA.

Open from June 23 to September 15. J. C. & C. E. Champlin, Proprietors.



A GLIMPSE OF THE OLD ROAD.



THE SEARLES MANSION,



THE SOUTH LIGHT AND MOHEGAN BLUFFS.



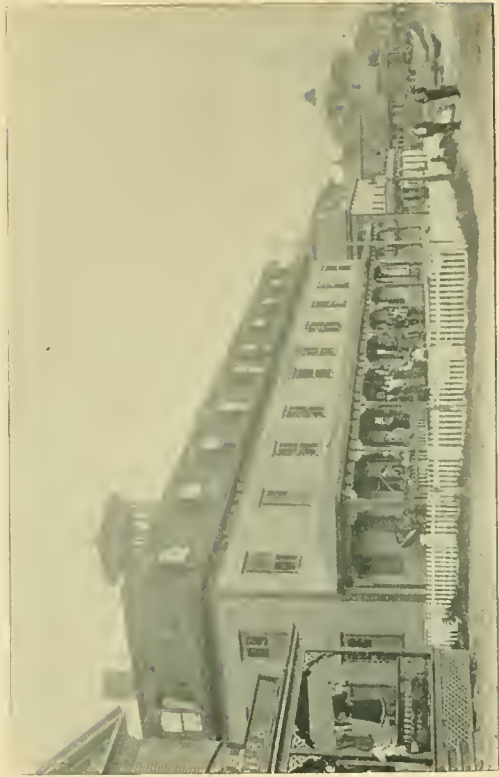
SALT POND AND NEW HARBOR.
From the Ocean View.



BLUFFS AND SURF AT CLAY HEAD.



VIEW FROM BEACON HILL.
Looking East.

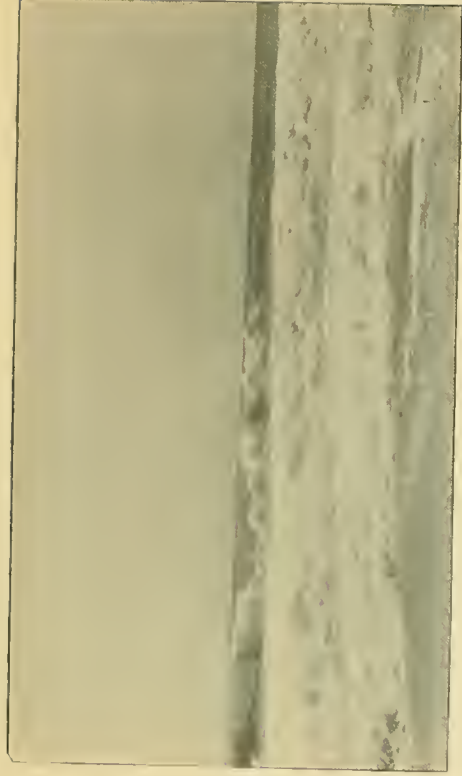


PEQUOT HOUSE.

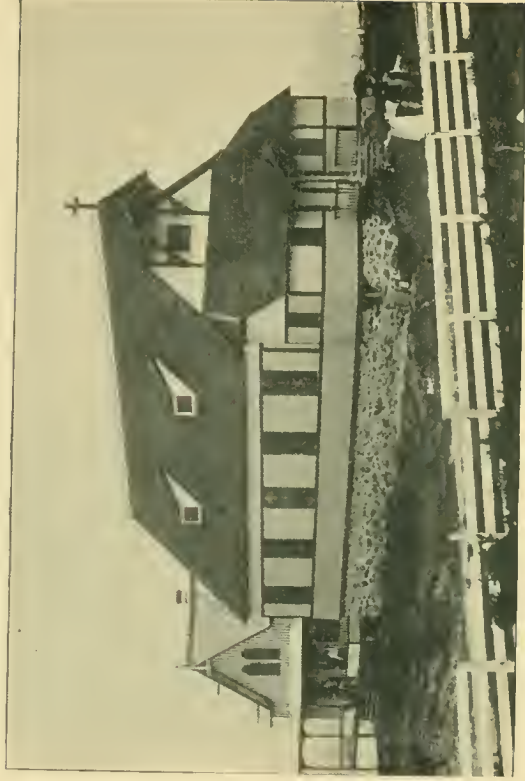
Open from June 25 to September 15. T. A. Ball, Proprietor.



EAST HARBOR.
Steamer Mount Hope Landing from Providence.



SURF NEAR VAILL. COTTAGE.



EPISCOPAL CHAPEL.
By the Sea.



PEBBLEY BEACH.



NEW LONDON AND NEW YORK LANDING.
Steamers Block Island and Montauk.

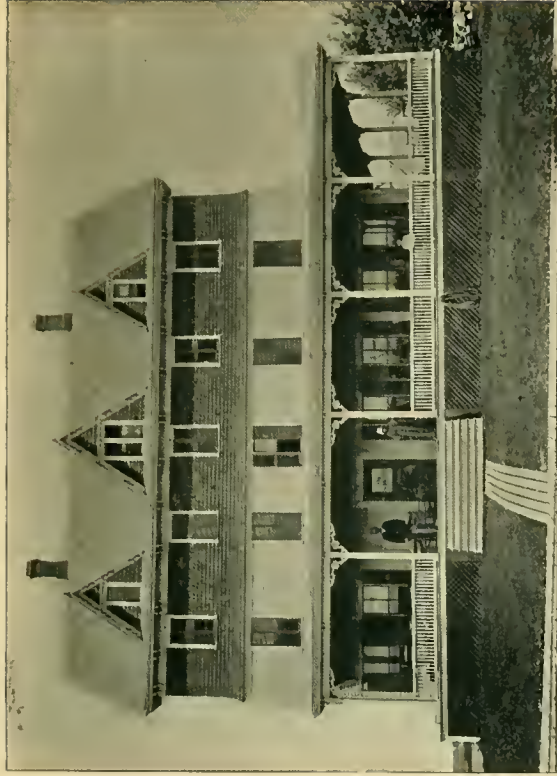


THE MANISSES.

Open from June 25 to September 15. C. E. Brown, Proprietor.



THE CONNECTICUT HOUSE.



THE WINDSOR.

Open from June 25 to September 15. Clarence C. Rose, Proprietor.



THE BLOCK ISLAND HOUSE.

Open from June 25 to September 15. George W. Conley, Proprietor.

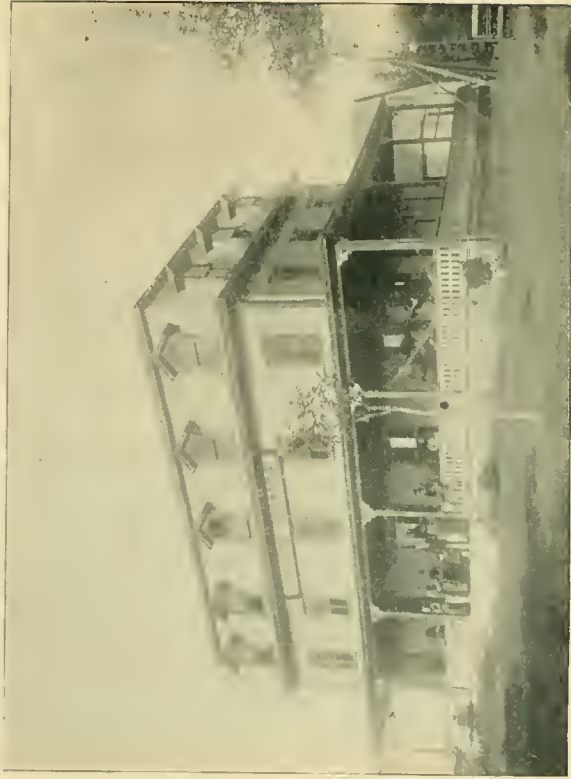


THE OLD WINDMILL.



THE HIGHLAND HOUSE AND ANNEX.

Open from June 25 to September 15. D. A. Mitchell, Proprietor.



THE UNION HOUSE.

Open from June 25 to September 15. L. A. Hall, Proprietor.



BLUFFS LOOKING WEST FROM SOUTH LIGHT.

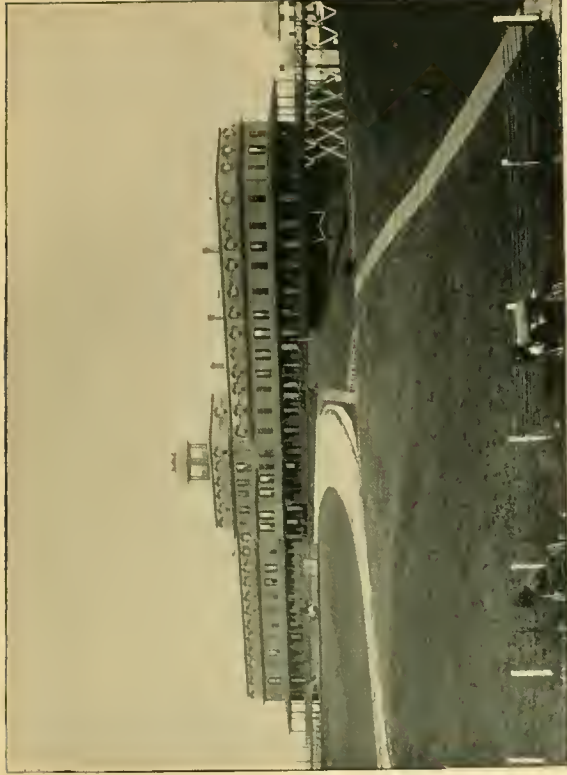


SPRING HOUSE AND ANNEX.

Open from June 20 to October 1. B. B. Mitchell, Prop.



BLUFFS AND CLIFFS AT SOUTH LIGHT.



THE OCEAN VIEW HOTEL.

Open from June 25 to September 15. Cundall & Ball, Proprietors.



STEAMER DANIELSON LANDING.



THE NATIONAL HOTEL.

Open from June 25 to September 15. R. G. Lewis, Proprietor.

JUN 27 1900

PD 181



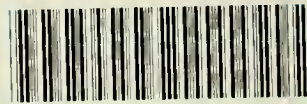
DOBBES BROS.
LIBRARY BINDING

ST. AUGUSTINE
FLA.



32084

LIBRARY OF CONGRESS



0 014 075 551 5 ●