

Historic, archived document

Do not assume content reflects current scientific knowledge, policies, or practices.



AUG 2 1938

Brand's

QUALITY
PEONIES, IRIS *and* LILACS
for Fall Planting

1938



French Lilac, President Loubet (above). We have an annual Lilac Show each year generally between May 20th and 30th.

Peony, Mrs. A. M. Brand (to the right). We have an annual Peony Show in fields and show room. Dates June 12th to 20th.

Iris, Mary Geddes (below). Winner Dykes Medal 1937. Our annual Iris Show is held generally between May 25th and June 12th.



[Everybody is invited each year
to come and see all the shows.]

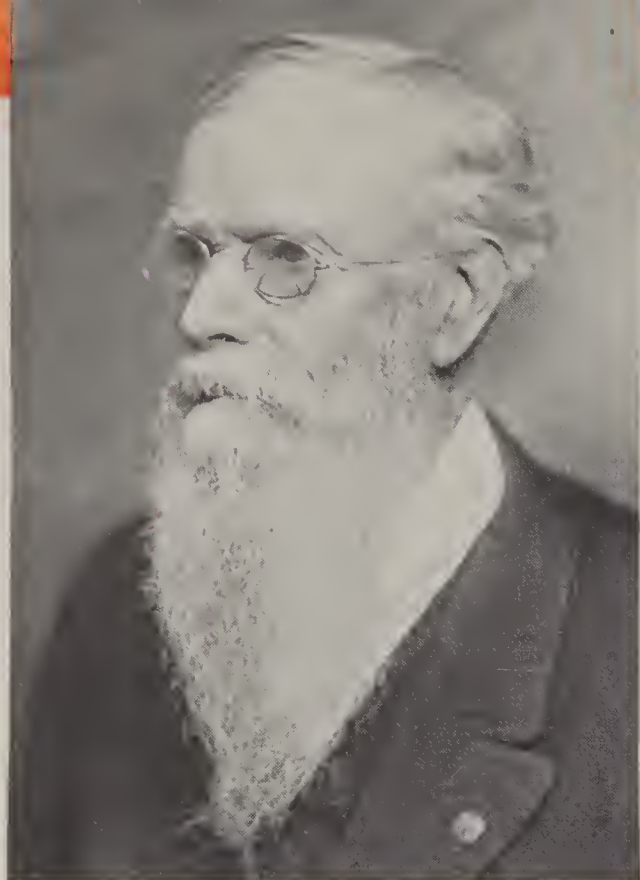
BRAND PEONY FARMS, INC.

BOX 408

FARIBAULT,
MINN.



Seventy Years 1868 - 1938



O. F. BRAND

We were told long ago that "three score years and ten" constitutes a good span for the active life of a man. It is much more unusual for a business of any kind to maintain a continuous healthy existence for that length of time than it is for a man. So it may not be out of place to call attention here to the fact that 1938 marks the close of the seventieth year in the history of the Brand Nursery business.

Mr. O. F. Brand started the business in 1868. He carried it on for many years with a constantly increasing interest in the flower phase of the work, especially in the growing and developing of the Peony. His son, A. M. Brand, showed an interest in plants from his childhood, and to him his father explained his work and his plans. As "Archie" grew older, he took an active part in the work of the nursery. In fact, his entire life, with the exception of 4 years, which he gave to the study and practice of law, has been spent in the nursery where he was born.

In 1911 Mr. O. F. Brand retired because of failing health and spent the remainder of his life in California. The Peony business thus passed into the control of A. M. Brand.

Just before this time the first seedling bed of the nursery came into bloom. This bed contained many beautiful flowers. In the first enthusiasm of experimental work the two Brands chose many plants for preservation and propagation, gave them names, and put them on the market. A considerable number of these new varieties have not come up to the standard which the more critical judgment

of later years has demanded, and they are no longer grown. However, many others, including Longfellow, Frances Willard, E. B. Browning, Martha Bulloch, Lora Dexheimer, David Harum, Chestine Gowdy, Winnifred Domme, Phoebe Cary, Henry Avery, Judge Berry and Mary Brand, have become standard varieties, maintaining high ratings, and are found under every comprehensive list of Peonies. These are designated as Brand Peonies.

Since 1911 Mr. Brand has brought into bloom a number of later seedling beds. One of these produced an unusual number of remarkable flowers. Twenty-two varieties originating in the bed were shown at the St. Paul American Peony Society Show in 1923. These varieties are Blanche King, Ella Christiansen, Hansina Brand, Hazel Kinney, Laverne Christman, Mrs. A. M. Brand, Mrs. F. A. Goodrich, Mrs. Frank Beach, Mrs. Harriet Gentry, Mrs. John M. Kleitsch, Mrs. Romaine B. Ware, Myrtle Gentry, and Victory Chateau Thierry.

Of these, Mrs. A. M. Brand received the Society's gold medal, and Myrtle Gentry received the silver medal. This giving of both of these medals to one originator at the same show was a unique event in the history of the Society.

This list of Peonies as well as those varieties originating in later beds are designated as A. M. Brand Peonies. A few new ones have been selected and named from these later beds and are listed and described in this catalog.

Mr. Brand now has an immense seedling bed of Lilacs from which he is selecting the best, and he hopes soon to give to the world Brand Lilacs as well as Brand Peonies.

Miss Gentry was formerly a High School teacher but twenty years ago she gave up teaching and accepted Mr. Brand's offer to take charge of his office.

Through her association with Mr. Brand and his work, her interest in the Peony itself, as well as in the sales department of the business, developed rapidly, and in 1920 she became Mr. Brand's partner.

In 1929 the business was incorporated and she is its Secretary and Treasurer.

Miss Gentry presides over the office and answers your letters. Both she and Mr. Brand give their personal attention to the filling of your orders, and this means you will receive satisfactory stock.



A. M. BRAND

MYRTLE GENTRY



SILVER MEDAL
1924



SILVER MEDAL
1923



SILVER MEDAL
1927



GOLD MEDAL
1923



Mr. Brand's inherent modesty has prevented our making any show of the many medals and honors bestowed upon him during his years of activity and progress in the developing of new Peony varieties. This year, however, on the 70th anniversary of the Brand Peony Farms, has prompted us to disregard Mr. Brand's specific instructions in this regard, and devote these two pages to a little history and exhibition of the achievements of Mr. Brand in his chosen field. These pages are going in the catalog without Mr. Brand's knowledge, and we hope when he sees them that he will forgive us this once, and we also hope that our readers will gather some pleasure and encouragement from this exhibition of one man's achievements.



Awarded Boyd Memorial Medal On New Japanese Peony, Prairie Afire



American Home Achievement Medal



GOLD MEDAL 1923

Our General Peony List ~



A Brand Division

SIZE OF ROOT

It is unfortunate that Peonies have to be sold at a certain price per root. Unless due discretion is used as to the size, kind, and quality of the root, the price alone means nothing.

We have standardized a type and quality of root now generally known to the Peony world as "A Brand Division." Our Brand Divisions have a large, well-balanced root system and each one carries three, five, or more eyes.


PRICE PER ROOT

Only a large, clean division, handled by specialized labor, can qualify as "A Brand Division." This is why no Peony in our list is priced lower than \$1.00. A root that can be produced and sold for less is not comparable in quality and size to a Brand Division. Figure the cost of your Peonies, not according to the price per root, but according to the size and beauty of bloom—the quality and quantity of yield—then you will find that no other Peonies cost so little as those which are grown from Brand Divisions.

TRANSPORTATION

We have always been willing to give our personal attention to all of our orders no matter how small they may be. But we do ask our customers to send an additional amount to cover the postage and the extra cost of handling all small orders.

When one Peony root is ordered allow 25 cents for postage and an additional 10 cents for each root until your order amounts to \$5.00. We prepay on all Peony orders amounting to \$5.00 or more in the United States.



Brand's
Peony
Manual

This instructive book, consisting of 64 pages, is sent free with every order amounting to \$5.00 or more. For this reason we are not using valuable catalog space to give all the information on the Peony we feel our customers need. To those who do not purchase from us, we make a charge of 25c for the book. Order one and we feel sure you will not be disappointed with your purchase.

We realize how difficult it must be for one who wishes to make a planting of Peonies and does not know varieties to choose from the long lists he finds in catalogs. To save our customers from mistakes, we have discarded varieties we do not consider worthy of garden space.

We feel sure that if one decides what colors he personally prefers to have in his own garden, and then chooses from our classified lists he will not be disappointed.

Instructions for Planting PEONIES

If you are ready to plant your Peonies when they arrive, wash off all packing material and drop the roots into water. Just before planting, remove the labels so the wire will not cut the roots. Dig a hole 2 feet in diameter and from 1 to 1½ feet deep. Place the Peony root in the hole so the eyes on the root are 2 inches below the level of the ground. It may be necessary to place more soil back into the hole in order not to have the eyes more than 2 inches below the level of the ground. Be sure the soil is tramped down well so it will not settle any more. Hold the division erect in the center of the hole with one hand, with the other draw in the soil and pack it firmly about the root so that just the eyes show. Give the root a pail of water and then fill in the balance of the hole and firm the soil tightly. Just as soon as the Peony appears above the ground, begin to cultivate at least twice each week until August 1st. By keeping the soil loose during the first growing season, there should be no loss.

1. When Will Brand Peony Roots Bloom?

Brand divisions will produce blooms next spring if roots are planted in September.

2. Why Do Some Plants Fail to Bloom?

A. They may be planted too deep. If they are planted too deep, the buds turn brown and do not mature. Your plant will produce many stems that are thin and weak.

B. You may not be cultivating them thoroughly. Plants should be cultivated each week from the time the red shoots appear above ground in the spring until after the blooming season. Then they should be cultivated several times before the first of September.

C. They may be planted where they receive too much shade. Peonies should be planted in the open where they get sunshine at least half the day.

D. They may be near large trees and shrubs which deprive them of sufficient nourishment.

3. How Deep Should They Be Planted to Give Best Results?

The buds on the crown of the plant should be two inches below the surface of the soil. In setting the root, be sure the soil in the bottom of the hole has been well tamped down so the plant will not sink below this level.

4. When Should the Tops Be Cut Off?

Cut the foliage from your plants between August 15 and September 15. Then remove these stalks and burn them.

BRAND'S PEONY MANUAL

This book answers all the above questions in detail and many, many more. Price, 25c.



GOOD STANDARD REDS

8.5 ADOLPHE ROUSSEAU (Dessert & Mechin)
 One of the very good early dark reds. The plant is very tall and holds its flowers so erect that it makes a fine showing. One of the finest of all red Peonies as a landscape variety. A great dark flower that looks almost black and unusually rich when viewed from a distance.
 A Brand Division \$1.00

8.7 AUGUSTE DESSERT (Dessert)
 A large midseason rose-red, with large round petals, each edged with a distinct, narrow silver border. Plant of medium height and a prolific bloomer. A brilliant light red that is very distinct in color and form and a most desirable sort.
 A Brand Division \$2.00

8.2 BRAND'S MAGNIFICENT (Brand)
 A very deep dark red carrying more blue than any other good Peony. This variety is noted for its beautiful form, prolific bloom, broad symmetrical roselike petals, and excellent color. A midseason variety.
 A Brand Division \$1.00

8.6 CHERRY HILL (Thurlow)
 A very tall growing semi-double bright dark red that is early, and splendid as a landscape variety. The color is a deep garnet, with a sheen so rich that the variety is very noticeable among all other reds. For best effects this variety should not be disbudded. Awarded a silver medal by the Massachusetts Horticultural Society.
 A Brand Division \$1.00

COMMANDER (A. M. Brand)
 An extra large, high built flower; very compact. A cone-shaped rose type Peony. Color a true self solferino-red. Although late, it blooms consistently, which cannot be said of most late varieties. After every other red is gone you can still go out and bring in excellent flowers of this variety. A real acquisition to our reds.
 A Brand Division \$2.00

8.4 DAVID HARUM (Brand)
 The flowers are very large with prominent guard petals surrounding a great ball of closely packed petals of the same shade. The entire flower is an even shade of soft Tyrian rose, without stamens. An upright growing plant with very strong stems that hold their great blooms erect. This is an excellent garden variety and also a good show flower.
 A Brand Division \$1.50

8.4 FELIX CROUSSE (Crousse)
 Late. A deep rose-red showing no stamens. Consists of a central bomb of incurved petals surrounded by broad, prominent guard petals. A good all-purpose red.
 A Brand Division \$1.00

8.8 KARL ROSENFELD (Rosenfield)
 A brilliant and striking variety, coming into bloom early midseason. Flowers very large, semi-rose type, and slightly fragrant. Desirable as a cut flower, a garden variety, and a show flower.
 A Brand Division \$1.00

9.0 LONGFELLOW (Brand)
 Everyone concedes Longfellow one of the most popular red Peonies because of its distinct, fadeless color and general dependability, both for cutting and garden decoration. It is as striking in the field as in the show room. It comes into bloom early midseason. The plant has excellent foliage and strong, stiff stems. The flower is a bright crimson and is always found among the winning classes in the show room.
 A Brand Division \$1.50

8.4 LORA DEXHEIMER (Brand)
 To us, the splendid habit and brilliant color of this plant have exceptional merit. We first selected it from the seed bed in 1904. Each succeeding year it has grown in our esteem. Color intense flaming crimson. Early midseason. A variety that ranks with Longfellow. From all parts of the country, we have reports of the wonderful qualities of Lora Dexheimer.
 A Brand Division \$1.00

8.7 MARY BRAND (Brand)
 No red Peony ever won favor so quickly as Mary Brand. Always found among the winning reds in every show room. Comes into bloom with Frances Willard. Color so distinct, it is easily recognized by amateurs, no matter how often they see it in our fields. A red in which there is little trace of purple. One of the most satisfactory reds as a cut flower as it will last a week if cut in the bud.
 A Brand Division \$1.00

8.8 MONS. MARTIN CAHUZAC (Dessert)
 If you wish the darkest red Peony grown, order this one. Flowers medium to large, rose type, with stamens. Color a deep maroon-red. It often comes semi-double until plants are well established.
 A Brand Division \$1.50

OFFICIALIS RUBRA
 This bright red variety comes into bloom a few days after Tenuifolia Flora Plena. As a rule, we find we can always cut a few flowers for our Decoration Day trade. This is a very old variety, but a very desirable one and should be in every Peony planting because of its earliness.
 A Brand Division \$1.00

9.2 PHILIPPE RIVOIRE (Riviere)
 Very fine bright crimson. Beautiful form, splendid in plant growth; most fragrant of the reds. Late midseason. A fine show flower. No stamens. Most distinct in color of all the reds; not bright like Mary Brand or Longfellow, yet it shows an absence of the purple which is so objectionable to some. The extremely beautiful form and uniform soft color make a flower loved by all who see it.
 A Brand Division \$3.00

8.8 RICHARD CARVEL (Brand)
 An early crimson parallel to the pink Mons. Jules Elie. With its extra early blooming qualities, large size, and splendid habits, this variety is already a well-established favorite. A single plant on the lawn is attractive and delightful, beautiful and lasting. A valuable cut flower. Unlike most reds, the odor is pleasant and pronounced, a very rare quality in the reds.
 A Brand Division \$1.00

8.3 WINNIFRED DOMME (Brand)
 Scarlet-red. No matter how many good reds you have, you will still want Winnifred Domme. Unlike most reds, it has practically no purple; the nearest scarlet of all Peonies. The plant is dwarfish, but stems are strong and erect, each producing a single bloom. A most excellent red to use as a border plant.
 A Brand Division \$1.00

TENUIFOLIA FLORA PLENA

The Fern-Leaf Peony



We feature this cut on account of its unusual foliage. It should save us writing many letters to tell others the name.

The earliest double to bloom. In bloom with us around May 20th. Very brilliant crimson. Finely cut foliage, so much like that of the Cosmos. Every season we receive numerous requests for the name of this flower. Tenuifolia should always be carefully mulched the first winter after planting. Plant as early in the fall as practicable. Very scarce. Few growers are able to list it.

A Brand Division \$3.00

Collection "A"

Longfellow. Early bright crimson.
Frances Willard. Midseason white.
Judge Berry. Early light pink.
Martha Bulloch. Late midseason deep pink.

A \$6.00 Value

for \$4.25 Postpaid



Martha Bulloch

Collection "B"

Mary Brand. Deep rich bright red. Midseason.
Rev. Tragitt. Late fragrant white.
Henry Avery. Midseason light pink.
Faribault. A late midseason deep pink.

A \$6.00 Value for \$4.25 Postpaid



Longfellow

The Three Collections
All Brand Divisions
for \$12.00 Postpaid

Hazel Kinney



David Harum

Collection "C"

David Harum. A large Tyrian rose. Midseason. \$1.50.
Susan B. White. A midseason creamy white. \$2.00.
Phoebe Cary. A late lavender-pink. \$1.00.
Hazel Kinney. A light midseason pink. \$2.00.

A \$6.50 Value for \$4.25 Postpaid





RECENT RED PEONIES *Introduced by* A. M. BRAND

In offering these new varieties to the Peony loving public, we do so with the full assurance they are going to give as much pleasure and general satisfaction as our former list of reds. These new varieties have been tested out over a period of 16 years. We have studied them carefully each year. We should not be willing to say they are better than the two fine reds, Longfellow and Philippe Rivoire, that are the two outstanding old varieties, but they are distinctly different and just as good.

FIREBALL

(A. M. Brand, 1938)

Some ten years ago our attention was attracted to a Peony among our seedlings having a distinctly new color. We have watched this Peony with much interest through these years. Last season we sold a number of roots under number to those who visited us during the blooming season and insisted upon having a root although it had not been named. It is easily sold to all who see it in the field. The flower is early, of medium size, semi-double, and for color effect a desirable garden variety. It is not a show flower and is not for indoor use, but as an outdoor variety it is a knockout. We can not tell you the color as it is not a real red nor a pink. Probably a brilliant Tyrian rose will best describe it. We have quite a stock of it and are going to introduce it at a price within the reach of all.

A Brand Division \$2.50

JEAN COOPERMAN

(A. M. Brand, 1938)

Named for a black eyed, rosy cheeked little girl, daughter of Dr. O. Cooperman of Minneapolis, Minnesota, who is very much interested in flowers. This flower comes from the same planting of seed as Blanche King, Mrs. Frank Beach, Mrs. A. M. Brand, and others in this list. We have watched it for many years and have invariably classed it as a splendid flower. This year when it came on again so exceedingly good we decided to name it. It is an even toned soft crimson-red of good size and pleasant odor. The flower is beautifully formed, semi-rose, made up mostly of large petals nicely arranged. It is an annual and profuse bloomer. The stems are clean and of medium length, foliage medium dark green and very clean. The bud is neat and of fine appearance. All of which go to make it not only a fine show flower but also, we believe, a coming cut flower red.

A Brand Division \$10.00

JOHN L. CRENSHAW

Another fine red coming into flower with the late varieties. When Baroness Schroeder is just passing its prime, this variety is at its best. This is a bright crimson-red unlike in color either Longfellow or Mary Brand. When the buds just begin to open, they might pass for a rich red rose. The three or four outer rows of petals are very large, broad, and symmetrically arranged. This flower has been admired in our seedling fields for the past ten years. We are dividing our stock again this fall and we are pleased to be able to offer a few roots for sale this season. The plant is of medium height, stems strong and erect, foliage narrow and dark green, and the blossom develops into fine size for a red. A Brand Division \$10.00

MRS. A. S. GOWEN

(A. M. Brand, 1938)

We believe there is no one who knows a good Peony better than Mrs. A. S. Gowen of Excelsior, Minnesota. It was she who staged the bloom of Hansina Brand for herself and the bloom of Mrs. J. V. Edlund for Mr. C. W. Bunn at the Toronto National Show in 1936 when the judges tied on these two varieties for best flower in the Show. On showing Mrs Gowen through a bed of our unnamed Peonies some years ago, we came to a new red which we thought unusually fine. She exclaimed that it was as fine a red as she had ever seen. When we stated that we would like to name it for her she expressed great pleasure.

It is midseason, large, semi-rose, large petals in perfect arrangement. A flower of exquisite form in a medium even toned red. Few red Peonies have beauty of form but this one certainly has.

A Brand Division \$10.00

MRS. BRYCE FONTAINE

A very fine semi-rose type that we named about eight years ago for a charming Peony enthusiast who came from Memphis, Tennessee, to visit us during the blooming season that year. She liked this beautiful red better than any other she saw in our seedling patch, and we distinguished it from that time on by giving it her name. We have continued to propagate this variety and have watched it carefully over a period of 16 years and we feel sure it is a real acquisition to the already named kinds in the red group. It is a flower of medium size, rich dark crimson in color, shows little purple and comes into bloom early midseason. As the petals break away from the closed bud, one is deeply impressed by the intense richness of the flower. It is darker than Longfellow but not the color of Mons. Martin Cahuzac. It is a flower that has wonderful substance and lasts remarkably well as a cut flower. We sold all the stock we had available two years ago. We expect to divide our stock again this fall and we shall not be able to offer it again for two years.

A Brand Division \$5.00

RUTH ELIZABETH

(A. M. Brand, 1938)

This Peony is named for a niece of the originator, Ruth Elizabeth Brand. Some years ago she wanted a Peony named for her and chose the one we named Ruth Brand. This Peony was good enough in its day, but Peony standards have changed since and to be right up-to-date Ruth wished another Peony named for her. This time her uncle, an older hand at the business, selected the Peony for her. Among his seedlings he had noticed an intensely rich red, a red of perfect rose form with broad rose-like petals set up in perfect arrangement. The petals have great substance and are of an exceedingly rich red, probably as rich a red as can be found in the Peony.

A Brand Division \$10.00

W. E. BLANCHETTE

A rich deep crimson of immense size, the largest red we know of. It is of a loose, semi-rose type with immense broad petals arranged in symmetrical form like the petals of a beautiful rose. It is so large and of such beautiful form that it catches the eye instantly in the field. It develops nicely inside as a show flower and holds up well over a period of a number of days. We believe anyone who purchases this fine red will be more than pleased with it.

A Brand Division \$10.00

SUBSTITUTIONS

Sometimes an order reaches us late in the season after our stock of some varieties is exhausted. If you send in an order and you are not particular about receiving just the varieties in your list, give us permission to substitute a variety of the same color of equal or better value. As a rule our stock is sufficient to fill our orders just as they are given.





GENERAL LIST OF WHITE PEONIES

- 8.6 ARGENTINE** (Lemoine)
A late midseason globular white, with symmetrically arranged petals of splendid substance. Fragrance pronounced and good. A very high class white that we personally think is one of the best new Peonies from Europe in recent years. **A Brand Division \$2.50**
- 8.7 AVALANCHE** (Crousse)
Large, compactly built—a globular cone-shaped flower. Blossom develops a distinct creamy white collar, surrounding a center of delicately tinted lilac-white petals with a few wide petals edged with tracings of carmine. Medium height plant; strong and upright; a profuse bloomer. Splendid for landscape effect and a wonderful show flower. A late variety. **A Brand Division \$1.00**
- 8.8 BALL O' COTTON** (Franklin)
Late midseason. This is an outstanding fragrant white. It is an excellent show flower and is also a good garden variety. The plant is of medium height with strong stems and good foliage. **A Brand Division \$1.50**
- 9.0 BARONESS SCHROEDER** (Kelway)
This is considered one of the finest Peonies grown. When the last symposium was taken, this variety received a rating of 9.0 after 79 people had voted. When the buds first open, they are a delicate blush, but the flower soon fades to a milky white. This is a variety that should be found in every collection. It comes into bloom late, after most of the white Peonies are gone. **A Brand Division \$1.00**
- 9.0 DENISE** (Lemoine)
This very large white opens a faint blush-pink showing red markings on its center petals. The flower has a delightful rose fragrance and is most dependable. Strong, upright stems are of medium height. The flower is of exquisite form and appearance. **A Brand Division \$3.00**
- 8.1 DUCHESSE DE NEMOURS** (Calot)
A very early, fragrant, pure creamy white. The guard petals are white with a full center of light canary-yellow, deepening to pale green at the base. An excellent garden variety. **A Brand Division \$1.00**
- 9.1 E. B. BROWNING** (Brand)
A very late white coming into bloom with Marie Lemoine. The buds of this variety are often as large as the entire blooms of other fair-sized Peonies. The bud opens slowly, and as the petals unfold, a delicate pink coloring appears; the inner surface of the petals being washed with the most delicate pinkish canary. The perfume of the flowers is strong and sweet. The variety is so late that it is seldom seen in Peony shows. **A Brand Division \$1.00**
- 8.9 ENCHANTRESS** (Lemoine)
A charming very late white. An excellent show flower. Prolong your blooming season by adding this excellent variety to your list. We understand that this is not a good flower for the South, as it is very late and does not open well, but the farther north it is grown, the better it becomes. As grown with us, it is rated far too low. It is surely entitled to a rating of 9.2. A splendid pure white. **A Brand Division \$1.00**
- 9.3 FESTIVA MAXIMA** (Meilleux)
An early true rose type with broad guard petals surrounding a compact inner mass of rich white petals flecked crimson. This is a good early garden variety to use for cut flowers, but as a rule, comes too early for a show flower. **A Brand Division \$1.00**
- 9.1 FRANCES WILLARD** (Brand)
Frances Willard is a very fine white which we believe gives universal satisfaction. It opens an exquisite blush-white, occasionally with a carmine touch, changing pure white. Usually found in the winning classes in every show room. Midseason, comes into bloom with Mary Brand. (A gorgeous Peony named for a great woman.) **A Brand Division \$1.50**
- 9.3 FRANKIE CURTIS** (Vories)
A large bomb type flower with a light tracing of pink on the central petals. The guards are large and prominent and are surmounted by a great ball of narrow petals. **A Brand Division \$2.00**
- 9.8 KELWAY'S GLORIOUS** (Kelway)
Midseason. Although not as symmetrical as Le Cygne, we believe this wonderful variety is fully as good and deserves as high a rating. Immense blooms with very long petals, so arranged that the entire bloom resembles a great downy ball of the most exquisite, delicate, snow-white lace. **A Brand Division \$2.00**
- 8.6 LA LORRAINE** (Lemoine)
Midseason. A large flower, nicely rounded, with great broad petals beautifully arranged. Color a soft even shade of creamy pink. In our opinion, this flower is not fully appreciated, for it is one of the choicest of all Peonies and should rate well above 9.0. From our first observation of the flower, this has been our constant impression. When shown together with magnificent blooms of Le Cygne, Kelway's Glorious, Therese and Mme. Jules Dessert, we have seen blooms of La Lorraine which showed up equally beautiful; and we think it is just as good a flower as any of them. **A Brand Division \$2.00**
- 8.4 LAURA VORIES** (Vories)
A late midseason blush-white. Large, undulated guard petals surround a low, globular center of fine rosebud form, which opens to disclose stamens in the depths; white with blush-pink center, thread-like crimson edge on some of center petals, and a golden white suffusion in the collar; mildly fragrant. A beautifully formed flower. **A Brand Division \$2.00**
- 9.9 LE CYGNE** (Lemoine)
A flower of true rose type, perfect in form. Early midseason. Creamy white with no tracings of color. Strong, medium height stems. Flowers large and delightfully fragrant. Le Cygne is the highest rated Peony and fully deserves its rating when seen at its best. **A Brand Division \$3.00**
- 8.7 LORCH** (Goos & Koenemann)
Outer petals very large, pure snow-white, incurving over a pale lemon and cream center, with pale crimson tracings on edge of center petals. A plant of good habit; large, nicely shaped flowers, held well up. Blooms not only of splendid color but also of beautiful form. One of the very best of the G. & K. varieties; indeed a beautiful Peony. **A Brand Division \$1.50**
- 8.5 MARIE LEMOINE** (Calot)
A sulphur-white, occasionally showing a carmine tip. This variety has a pleasing and pronounced fragrance. It is one of our latest whites. **A Brand Division \$1.00**
- 8.3 MARIE JACQUIN** (Verdier)
A midseason flower with purest white guards; then a collar of yellow stamens surrounding a row of shorter pure white petals, then a tuft of yellow stamens, giving the flower a pronounced Waterlily effect. The stems are erect, a clean, light green, as is also the foliage. The flower is semi-double, held perfectly erect, and on young plants it often comes a beautiful single. **A Brand Division \$1.00**
- 9.6 MRS. A. M. BRAND** (A. M. Brand)
Pure white. When this flower was a two-year-old, we were first attracted by its large, uniform, remarkable white blooms; the clean, thrifty, light green stocks; the luxuriant foliage. Blooms cut in the bud and taken inside develop in remarkable form. Opens a pure, glistening white; pure rose type; a large, flat flower with prominent guards and petals of wonderful substance. Received the Gold Medal of the American Peony Society, St. Paul, 1923. Very late. **A Brand Division \$4.00**

"Rigid" PEONY SUPPORTS

Choice peonies should be protected by good supports so that the blooms will not be beaten to the ground in a wind storm or heavy rain.

We can supply the "Rigid" Peony Support (shown in the illustration) which is the kind we buy for our own use. This support is well made of 3-gauge galvanized wire—24-in. tops; 48 inches tall.

Price f.o.b. Faribault or factory:
Each 70c; 12 for \$7.00.

Shipped by freight or express. If ordered ahead of time, they can go by freight at a good saving.

Write for prices where larger quantities are wanted.





9.0 MRS. FRANK BEACH

(A. M. Brand)

Ivory-white. A very large, flat, perfect rose type flower with long, narrow, lacinated petals of the same lacy effect as in Jubilee. Blooms equally large as Jubilee but borne finely erect on rather dwarfish plants with very strong stems. Much as we admire Jubilee, it is handicapped by a weak stem. Mrs. Frank Beach is a glorified Jubilee. Deep cream. It fades but little even when developed in the field. Like Le Cygne, this variety develops a flower true to type even on a yearling. Blooms profusely as a two-year-old. Received an Award of Merit, American Peony Society, London, Ontario, 1922. Late midseason. Sweetly fragrant. A Brand Division \$3.00

9.1 MRS. HARRIET GENTRY

(A. M. Brand)

A very late perfect rose type variety. Petals are very large, of the purest glistening white. Deep in the center of the flower you will find a touch of that peculiar pinkish tint for which Solange is famous. This is one of our latest white Peonies to bloom and is one of the most refined flowers in this list. A Brand Division \$3.00

MRS. J. V. EDLUND

(J. V. Edlund)

This is a large pure white flower of most perfect form. In voting off the tie with Hansina Brand at the Toronto National Show, this flower was awarded best flower in the show. It is a late, large pure white that is in bloom with Blanche King, Genevieve, Mrs. A. M. Brand, and Mrs. Frank Beach. It is one of the very finest of all Peonies. A Brand Division \$10.00

7.9 MME. DE VERNEVILLE

(Crousse)

A bomb type. Guard petals sulphur-white; center petals rose-white with carmine touches. Good substance. Stems long and strong. An ideal cut flower. Pleasing fragrance. Comes into bloom after Festiva Maxima, and we regard it superior in beauty.

A Brand Division \$1.00

8.9 MME. EMILE LEMOINE

(Lemoine)

A rare, beautiful Peony; strong grower, free bloomer. Flowers very large, uniform in shape and size. Plant rather tall with strong, erect stems. Bloom is very perfect in form, with large, rounded roselike petals of a tender glossy white, overlaid with a sheen of delicate satiny pink, covered with tiny dots of deeper pink. Petals of great substance.

A Brand Division \$1.00

9.0 NINA SECOR

(Secor)

Flowers medium to large. Tall, graceful, light green stems. Rather narrow, clean, light green foliage. Bloom absolutely pure white, of true rose type. Built high with a cupped rosebud center. Very fragrant. One of the very best pure whites. Much like Kelway's Glorious.

A Brand Division \$1.00

8.8 NYMPHAEA

(Thurlow)

Large flat flowers with wide, silky petals of delicate creamy white, notched at tips, edges somewhat rolled; yellow stamens in center reflect a golden light throughout. Fragrant. Early midseason. Remindful of a Waterlily only much larger and more beautiful than any Waterlily we have ever seen. Very refined; a real addition to our growing list of good Peonies. More semi-double than rose type.

A Brand Division \$1.00

REV. H. TRAGITT

(A. M. Brand)

Very large, of true rose type. Great blooms of the most perfect form resemble large balls of snow. The dwarf plants with strong stems hold the great white blooms erect. Very sturdy, even growth. Planted in rows, they present a remarkable sight when in bloom. So profuse, the blooms cover the whole plant with a solid mass of white. Usually pure white, yet occasionally a faint trace of red shows on an inner petal. Globular in form; great broad, snow-white petals of great substance. This variety resembles Le Cygne but is late while Le Cygne is early.

A Brand Division \$3.00

9.7 SOLANGE

(Lemoine)

This is a variety that is hard to classify. It might be classed with the light pinks, but it is neither a white nor a pink, but a suffusion of buff and pale salmon-pink. A late variety with tight buds that often fail to open. When well grown this variety has perfect form and unusual coloring. Always a favorite the year when it comes good.

A Brand Division \$1.00

SUSAN B. WHITE

(A. M. Brand)

A pure early midseason white of very fine form and large size. Plant tall, luxuriant dark green foliage. Individual blooms very large; petals very long and narrow, form a great compact dome-shaped flower with large guards drooping gracefully away from the balance of the flower. Pure white, tinted heavily cream, with green showing at base of petals. Golden stamens add to the beauty of this fine white.

A Brand Division \$2.00



Mrs. Frank Beach

NEW WHITE VARIETIES
Introduced by A. M. BRAND

DR. CHRISTOPHER GRAHAM

This variety was named for Dr. Graham, who was so long identified with the early history of the Mayo Clinic at Rochester, Minnesota. Here is a large late white in season with Marie Lemoine. It is a rich creamy white absolutely void of stamens. The plant is tall, with medium green foliage and strong stems. The flower is large, loosely built, with large guard petals enclosing a center of smaller lacy petals. There is an occasional trace of carmine on a petal, but not flecked like Festiva Maxima. The general appearance of this late flower is that of a large, very creamy white, the Kelway's Glorious type. We consider this a real acquisition to our short list of good late whites. It is absolutely a first-class variety and also a late variety. It is a loose type and will open well.

A Brand Division \$10.00

JANE ADDAMS

(A. M. Brand)

A late midseason white of medium size, beautifully formed, and rose type. The petals are broad and cupped as they circle about the heart of the flower. The fragrance is delicate but pronounced. Two of our earlier white varieties, Frances Willard and Elizabeth Barrett Browning were named for famous women. When we found this beautiful white and were ready to give it a name we decided on the name, Jane Addams.

A Brand Division \$10.00

ROBERT E. LEE

(A. M. Brand)

A beautiful snow-white that we have had under test since 1922. A pure white flower that makes a wonderful showing when grown in mass. Several years ago we had this variety on four-year plants in a row about 100 feet long. The plants were disbudded and when they came to bloom they were truly a wonderful sight. Every available inch of space was filled with the pure white flowers and the row remained one of a great drift of snow.

A Brand Division \$10.00

Your Own Collection

Select any 10 Peonies listed at \$1.00 each for \$7.50. Any 10 listed at \$1.50 each for \$10.00. Add 35 cents extra for postage at these prices.



YELLOW PEONIES

All yellow varieties should be cut in the bud and developed inside to bring out the best color effect.

7.7 FANNY CROSBY

(Brand)

An early yellow Peony with pink guard petals that is growing in favor more each year as it becomes better known. The plant is strong, thrifty, and very floriferous. The side buds come into bloom with the main flower and if left on the plant they make a wonderful showing.
A Brand Division \$1.50

8.8 LAURA DESSERT

(Dessert)

The flower is round, of rose type. Guard petals creamy white, enclosing a domelike center of pure canary-yellow. Like Fanny Crosby, the plant is an upright grower, holding blossoms erect for good landscape value. Like all yellows, it must be developed inside away from the sun to preserve its color. Early midseason.
A Brand Division \$2.00

8.6 GOLDEN DAWN

(Gumm)

Anemone type; midseason. Yellowish center with broad guard petals of ivory-white. Similar in color to Primevere and Laura Dessert. For best color effects, all yellow Peonies should be cut in the bud and developed inside.
A Brand Division \$2.00

8.6 PRIMEVERE

(Lemoine)

A fine yellow Peony. Guard petals creamy white, enclosing a central ball of sulphur-yellow. If cut in the bud, as it begins to open, so the flower may develop away from the sun, it will hold a clear yellow color.
A Brand Division \$1.50



Tourangelle - Pink



Le Cygne - Creamy White



Victory Chateau Thierry - Pink



Primevere - Yellow



LIGHT, MEDIUM AND DEEP PINKS

- A. G. PERRY** (A. M. Brand)
Early midseason. Plant of fine upright habit, medium height, with nice clean stems and foliage. Petals of splendid substance. Color a rich old ivory, tinted delicate rosy pink, with zones of deeper pink radiating from the center of the flower to the edge of the petals. General color effect flesh-pink fading to white in the field. This is one of our newer Peonies and we feel that the most exacting will like to add it to their collections. A Brand Division \$5.00
- BLANCHE KING** (A. M. Brand)
Deep pink. Peony lovers have been constantly searching for a good deep, late pink. We have now found this flower in Blanche King. This new variety is of wonderful size, symmetrical, and of true rose type. It is a glowing deep pink that holds its color in the field and also develops into a wonderful show flower. This variety was first exhibited at the National Peony Show held in London, Ont., Canada, in 1922. Here it received an award of merit and attracted a great deal of attention. At the late St. Paul Show it was awarded the prize for the best flower at the show and also won first in a class of twenty best dark pinks. One of the latest to bloom. A Brand Division \$4.00
- 8.7 CLAIRE DUBOIS** (Crousse)
A late flower of immense globular form, with long incurved petals of a uniform shade of clear violet-rose, tipped silvery white. It has that same wonderful attractiveness possessed by Mons. Jules Elie. They are much the same in color but Claire Dubois is late where Mons. Jules Elie is early. The best cut flower of its color in its season. A Brand Division \$1.00
- 9.1 CORNELIA SHAYLOR** (Shaylor)
We think that this is one of Mr. Shaylor's best Peonies. A very late variety with heavy stems and excellent foliage. It opens a decided pink but gradually fades to an almost pure white with a greenish tint at the base of the petals. A Brand Division \$2.00
- 7.6 EDULIS SUPERBA** (Lemon)
This is the first good early deep pink. It sometimes opens for Decoration Day with us in Minnesota. The flowers are large, borne profusely on tall, strong stems. A loose, crown type flower, of a beautiful deep pink. One of the greatest of all cut flowers in its color and season. This flower deserves a much higher rating and should be planted because of its earliness and general good qualities. A Brand Division \$1.00
- 9.1 EDWIN C. SHAW** (Thurlow)
A large cup-shaped flower, borne on strong stems. Outer petals are broad, rounded, with carmine tracings; inner petals graduate smaller and shorter to the center. Color a clear shell-pink. Highly impressed as we are with all of Thurlow's seedlings which we have grown and admired, this variety is now our favorite. First we thought President Wilson to be the finest of the lot; yet now, after years of comparison, we have shifted our preference to E. C. Shaw. A Brand Division \$1.50
- 9.0 ELLA CHRISTIANSEN** (A. M. Brand)
Although not so deep a pink as Blanche King, Ella Christiansen is so distinct from the delicate pinks in coloring as to be a real acquisition. The flower is exceedingly large, both on the plant in the field and when handled as a cut flower. Petals are long, narrow, and heavily serrated on the edges. The flower first opens cup-shaped, then flat. Irresistibly appealing—Ella Christiansen receives the unbounded praise of every visitor. We like it better every year. A Brand Division \$3.00
- 8.6 EUGENIE VERDIER** (Calot)
An ideal pink variety, coming into bloom early midseason. Semi-rose type. Opens a fresh delicate hydrangea-pink with primary petals lighter, and the center of flushed crimson. Fragrant. A Brand Division \$1.00
- 8.9 EUNICE SHAYLOR** (Shaylor)
A midseason semi-double variety; beautiful on matured plants. Outer petals are a light pink. Center petals are a flesh-white with a circle of golden stamens around the center tuft. A good show flower. A Brand Division \$2.00
- 9.2 FLORENCE MacBETH** (Sass)
An immense rose type flower of a soft La France pink. The petals are broad, of much substance, and have a crinkled effect that is very distinct and beautiful. The plant is a strong, vigorous grower with strong stems. A very fine pink. A Brand Division \$2.00
- 8.1 GALATHEE** (Lemoine)
Here is a flower that for some reason has been overlooked. It is a beautiful variety that we would rate very close to 9.0. We would place it in a class with such flowers as Sarah Bernhardt, Rosa Bonheur, and other such high class flowers. Extremely late and very fine. Beautiful light pink. A Brand Division \$1.00
- 8.9 GEORGIANA SHAYLOR** (Shaylor)
A large, late midseason light rose-pink. Fragrance pleasing; plant medium height; floriferous; good stems and foliage. If Mr. Shaylor had never produced another Peony, this one alone would immortalize his name among Peony lovers. Exceptionally fine for garden decoration and cutting and also a great exhibition flower. A Brand Division \$1.00
- 8.8 GRANDIFLORA** (Richardson)
A soft shell-pink, shading to white with faint shadings of rose. When one thinks the Peony season ended, he can still go out and cut fine blooms of Grandiflora. For this reason Grandiflora should be in every garden. A Brand Division \$1.00
- 9.1 HANSINA BRAND** (A. M. Brand)
A flower of beautiful form and great size. Plant very tall and strong; holds the mammoth blooms erect. Color glistening flesh-pink with a salmon reflex shading toward the base of the petals. Very distinct. As it fades, it resembles a perfectly formed specimen of Solange, for which it is often mistaken in our show room. Yet Solange sometimes fails to develop its flowers at all or produces imperfect bloom, while Hansina Brand comes good every year. In 1933 at the Chicago Exposition, Hansina Brand was awarded the Farr Memorial Gold Medal for the best flower in the entire show. This flower was exhibited by Mr. C. W. Bunn of St. Paul. In 1934 at the National Show held in St. Paul, Hansina Brand was again awarded the Farr Memorial Medal as the best flower in the show. A Brand Division \$5.00
- 9.0 HAZEL KINNEY** (A. M. Brand)
I can still remember this beautiful flower as it appeared on the plant the first time. The form was so superb and the color so pure; it impressed us at once as a flower of great promise, which it since has proved. A great show flower when displayed alongside the very best. True rose type. Color a delicate clear hydrangea-pink. Medium height plant; clean, light green foliage; late midseason; a prolific bloomer. A Brand Division \$2.00
- 8.8 HENRY AVERY** (Brand)
A late midseason variety. Guards and center petals a bright light pink. Between the guard and center petals is a very distinct collar, from an inch to an inch and a half wide, of creamy yellow petals. This gives the flower a very striking appearance. This is a handsome Peony making a fine garden variety as well as a striking show variety. A Brand Division \$1.00
- 8.6 JUDGE BERRY** (Brand)
This is a fine delicate pink coming into bloom with that very early deep pink, Edulis Superba. Its attractive, large flat flowers are of excellent color and texture. Coming at the beginning of the Peony season, when most varieties are of small or medium size, this immense flower has a peculiar distinction. A Brand Division \$1.00
- 9.0 JUNE DAY** (Franklin)
We think June Day is one of the very best of Mr. Franklin's introductions. A flower of striking beauty, light flesh with lavender shadings on the edge of the central petals. Pleasing fragrance, upright grower with dark green foliage. A Brand Division \$2.00
- 9.0 KATHARINE HAVEMEYER** (Thurlow)
Originator's description: "Large, rose type, flesh-pink in color; guard petals broad and rounded, somewhat notched at the ends. Center petals narrow and fringed. Full, high center. Sweet fragrance. Midseason to late. Honorable Mention, American Peony Society, London, Ontario, 1922." A Brand Division \$2.00



- 8.8 KELWAY'S QUEEN** (Kelway)
This is a distinct Peony, both in flower and plant. At one time the stocks of this variety were badly mixed, but when the true variety is once seen, there can be no mistake. It is a large, compact, rose type flower of uniform mauve, with center flecked crimson. A tall strong grower, and a very profuse bloomer. Late midseason. A Brand Division \$2.00
- 9.1 LADY ALEXANDRA DUFF** (Kelway)
An immense, loosely built flower with great broad rounded petals. A pale blush-pink, fading to white, with yellow stamens. When not disbudded, the central flower is loosely double, of a rather flattened, circular form; central petals touched with carmine. A beautifully formed flower; sweet scented. Very floriferous. Very showy. Opening after the central flower, the side flowers come semi-double, saucer-shaped, showing stamens. A Brand Division \$1.00
- 9.2 LA FEE** (Lemoine)
Long, narrow, sharply pointed foliage. Flowers very large, loosely built, with long narrow petals sharply-notched at the edges. Guards mauve-rose. Collar creamy white. A beautiful mottling of different shades of pink. Strikingly beautiful, both in the field and show room. A Brand Division \$1.50
- 8.1 LAKE O' SILVER** (Franklin)
This is a light pink silver-tipped variety, with golden anthers prominently showing throughout the flower. The central petals are a darker pink. The bloom is very large, often 7 to 8 inches in diameter on established plants. It is an extremely free bloomer. A Brand Division \$1.00
- 9.0 LA FRANCE** (Lemoine)
Very large, true rose type. A uniform apple-blossom-pink with crimson splashes on the guards. This flower during those years when it is at its best is one of the most outstanding of all Peonies. A Brand Division \$1.00
- 8.9 LAVERNE CHRISTMAN** (A. M. Brand)
A very large flesh-pink of varied shadings. The plant is tall and a vigorous grower. This variety received an Award of Merit at St. Paul, Minnesota, in the National Show held during 1923. Very late. Because our stock is small, we are not able to list this variety each year but with a nice stock again built up we can send out some fine roots. A Brand Division \$3.00
- 8.8 LILLIAN GUMM** (Gumm)
Late midseason. A new flower of outstanding qualities, good enough to be repeatedly singled out from hundreds of varieties in the field. Very large, globular in form, rose type, with great broad petals, and a cupped center. Color uniform apple-blossom-pink with more brilliant shadings at the base of the petals. A Brand Division \$1.00
- 8.8 LOVELINESS** (Hollis)
Very late. Produces very large, flat Hydrangea-pink flowers; blooms of wonderful beauty. It is Hollis' best Peony. Plants tall with heavy foliage and stems strong enough to hold the immense blooms erect. The flowers, a uniform shade of pink, make wonderful show flowers. A Brand Division \$1.00
- 8.7 LUETTA PFEIFFER** (Brand)
Very large, semi-double, pinkish white. Foliage, large and clean; stems long and stout. Immense blooms are produced in great profusion. Petals are long, broad, of great substance; a pure Hydrangea-pink interspersed with golden stamens and some splashes of red. Blooms early. A Brand Division \$1.00
- 8.7 MADELON** (Dessert)
A beautiful silvery pink, among the latest of Dessert's originations. Petals imbricated and slightly touched with carmine. A splendid late variety. A new Peony from France carrying that peculiar charm always to be found in the Dessert selections. A Brand Division \$1.00
- 9.1 MARTHA BULLOCH** (Brand)
Very tall, very large blooms; late. One of the greatest of all Peonies. Bright, old-rose-pink; center of lighter rose, and pink. Roselike fragrance. Tall, straight stems. The Northwest Peony Show is staged alternate years in St. Paul and Minneapolis. Outside of the National Show, it is the largest Peony Show in America, taken year after year. Here Peonies of all varieties are shown at their best by expert showmen. The class that brings out the best flowers is the class that calls for ten vases, one each of ten varieties, three blooms to a vase. Into this class go the ten best vases of each exhibitor. Martha Bulloch is almost invariably in the exhibit that wins first. A Brand Division \$2.00
- 8.9 MARIE CROUSSE** (Crousse)
A very attractive flower. Color very delicate shell-pink bordering on salmon; stiff, upright stems. Fragrant. Midseason to late. A splendid variety, distinct in color from any other pink you may have. A most desirable sort for distant effect. Such a clear pure self color—it attracts the eye, even when blooming among a hundred different pinks. A Brand Division \$1.00
- 9.0 MILTON HILL** (Richardson)
A very beautiful flower of a delicate shade of salmon-pink, resembling Walter Faxon. Seen in the show room in first class form, this variety is impossible to beat in its color. It received a rating of 9.0 with sixty-three voting. This is absolutely one of the finest of all Peonies. A Brand Division \$1.00
- 9.4 MME. JULES DESSERT** (Dessert)
One of the finest of all Peonies—flowers very large, well formed, with long broad petals. Blooms held rigidly erect on good straight stems of medium height. Color a creamy white, lighted with buff and salmon shades. A few golden stamens appear to beautify an already beautiful flower. Always among the main prize winners at the great shows. A Brand Division \$1.00
- MRS. DEANE FUNK** (A. M. Brand)
Too new to be rated. Large and peculiarly beautiful in formation. The broad guards and half of the petals turn outward, gracefully downward, then up. Next is a distinct band of golden stamens as in Phyllis Kelway. Lighting up the entire flower, these stamens enclose a rosebud, cup-shaped center of large incurving petals. Color a Walter Faxon pink. Magnificent in the show room. One of the finest of all Peonies for use in decorative work such as the making up of large vases, etc. A Brand Division \$2.00
- 9.0 MRS. JOHN M. KLEITSCH** (A. M. Brand)
A tall, late pink with exceedingly strong heavy stems and large deep green foliage. Color violet-rose with a distinct lavender cast. Petals long, broad, pointed and of great substance. A very late fragrant flower of true rose type. First prize as best flower in entire show at St. Paul, 1928. A Brand Division \$3.00
- 9.1 MRS. ROMAINE B. WARE** (A. M. Brand)
True rosebud effect in the center, the petals radiating in peculiar fashion to give a pleasing effect to the entire bloom. Returning from the National Show at Boston, I stopped with my good friend Harry F. Little. Mrs. Romaine B. Ware was in full bloom. Of this wonderful flower Mr. Little said, "I think this one of the daintiest of all Peonies in its perfect beauty." Exquisitely delicate; medium size; rose type. Medium height plant; profuse bloomer; midseason. Fragrant. A Brand Division \$2.00
- 9.3 MONS. JULES ELIE** (Crousse)
An immense self-colored flesh-pink, shading a trifle deeper toward the base of petals. Great prominent broad guard petals enclose an immense ball of incurved petals of the same color, all covered with an intense silvery sheen. A Brand Division \$1.00
- 9.1 MYRTLE GENTRY** (A. M. Brand)
A plant of splendid growth and clean appearance holds the beautiful great flower erect and well above the foliage. Immense flowers of perfect rose form with great broad, nicely rounded petals of wonderful substance. Color, beautiful pink with tints of flesh and salmon. This variety is as fragrant as a Tea Rose. Awarded Silver Medal at St. Paul Show in 1923. A Brand Division \$3.00
- 8.9 NANCY DOLMAN** (Vories)
A tall, late, pale rose-pink, of conical form and great size. A new flower that we have tried out over a sufficient time to be safe in pronouncing it a real good flower. A Brand Division \$3.00
- 8.8 PHYLLIS KELWAY** (Kelway)
Very large, loosely built, of the most exquisite beauty. Color deep lavender-flesh with long rays of lighter lavender playing the length of the petals through the deeper colors. A row of broad petals surrounds a loosely built cup-shaped center of long narrow petals intermingled with conspicuous yellow stamens. Long, stiff stems hold blossoms erect—a gorgeous beauty in the rays of sunlight—one of the most brilliant and striking Peonies in the list. A Brand Division \$1.50
- 8.8 PHOEBE CARY** (Brand)
Although this variety was introduced thirty years ago, we have not been able to multiply our stock rapidly enough to list it every year. The color is a rose-pink with center slightly deeper in shade. The plant is tall, in season with the late white, Marie Lemoine. A pleasing fragrance. A Brand Division \$1.50



PRESIDENT COOLIDGE

(A. M. Brand)

Too new to be rated. Pink. Large, beautiful flowers; a rather uniform lavender-pink. Irregular petals in unique irregular formation. The prominent guards stand out from the rest of the flower; very attractive from a distance. The entire flower is climaxed by a striking rosebud effect. Blooms carried well above the foliage on strong stems. A late Peony, remarkable both as a show flower and landscape variety. **A Brand Division \$3.00**

9.3 PRESIDENT WILSON

(Thurlow)

A very large, late, bright rose-pink, fading to a lighter pink. The flower has a rich, spicy fragrance. The plant is of medium height, strong stems, good foliage. Awarded Certificate of Honorable Mention at London, Ontario, Show. **A Brand Division \$1.50**

8.7 REINE HORTENSE

(Calot)

A show flower usually found in the winning classes. Sometimes sold under the name of President Taft. Tall growing, it produces lots of large perfectly formed flowers on long, stiff stems. Color a uniform hydrangea-pink, minutely splashed on a white background; also prominently flecked with crimson. **A Brand Division \$1.00**

9.0 ROSA BONHEUR

(Dessert)

This is a very large, rose type flower with a delicate coloring and fine texture. The plant is medium in height, erect, with strong stems. A late variety that is always admired. **A Brand Division \$1.00**

9.1 ROSE SHAYLOR

(Shaylor)

A very large midseason pale flesh-pink, tinted with rose-pink, lighter at the edges and shading to creamy yellow at the base of the petals; center petals strongly marked crimson on the edges. The plant is tall, strong, free-flowering with good foliage on stiff stems. Another one of Mr. Shaylor's fine Peonies. **A Brand Division \$2.00**

9.0 SARAH BERNHARDT

(Lemoine)

Another variety that prevails in the show room. So well known, it seems unnecessary to say that it should be in every garden. Semi-rose type. Late midseason. Color, apple-blossom-pink with each petal silver tipped. Agreeable fragrance. **A Brand Division \$1.00**

8.7 SILVIA SAUNDERS

(Saunders)

A beautiful little flower remindful of a semi-double wild prairie rose. Semi-double blooms open out flat, slightly cupped. Around the edge is a double row of wide rounded rose colored petals which in turn surround a central cluster of short stamens with delicate light green carpels, tipped bright pink. Delicately beautiful—a Peony masterpiece. **A Brand Division \$5.00**

9.1 SOUVENIR DE LOUIS BIGOT

(Dessert)

Salmon-pink. Color a brilliant rose, slightly tinted carmine at the base, turning to a salmon-pink. Resembles Walter Faxon in color but stands up much better in the field. **A Brand Division \$1.50**

8.4 STRASSBURG

(Goos & Koenemann)

Flowers very large, loosely built, semi-rose. Petals very large, broad, delicate lilac-rose. This German firm has sent out many beautiful Peonies, all distinct, but in their entire list this is one of the best. Stock of this variety is very scarce. **A Brand Division \$1.50**

9.8 THERESE

(Dessert)

Very large; somewhat loosely built; long, narrow pointed petals. Plant of medium height with strong stems. Usually produces large typical flowers, even on 1-year plants, if they are allowed to bloom. Early midseason pink, fading toward the center, and illumined by a golden yellow glow in the depths. A supreme flower for exhibition purposes. **A Brand Division \$1.25**

9.4 TOURANGELLE

(Dessert)

Rose type; late; a vigorous grower, bearing large high-built flowers with cupped centers. Color delicate pearly white, suffused with shades of delicate salmon and La France rose. Has a weak stem but the coloring is unusual. **A Brand Division \$1.00**

VICTORY CHATEAU THIERRY

(A. M. Brand)

A very large flower with immense, broad, evenly arranged, rounded petals of great substance. A clear bright pink, gradually fading to a lighter pink. This variety is early, and, like Richard Carvel and Judge Berry, is seldom seen in the show room. The plant is of medium height with very strong stems that hold the large, cup-shaped blossoms well erect. We consider this variety one of our very best. When Victory begins to open, you will make many trips to your garden each day to watch this gorgeous flower as it unfolds its clear, pink, broad petals. **A Brand Division \$3.00**

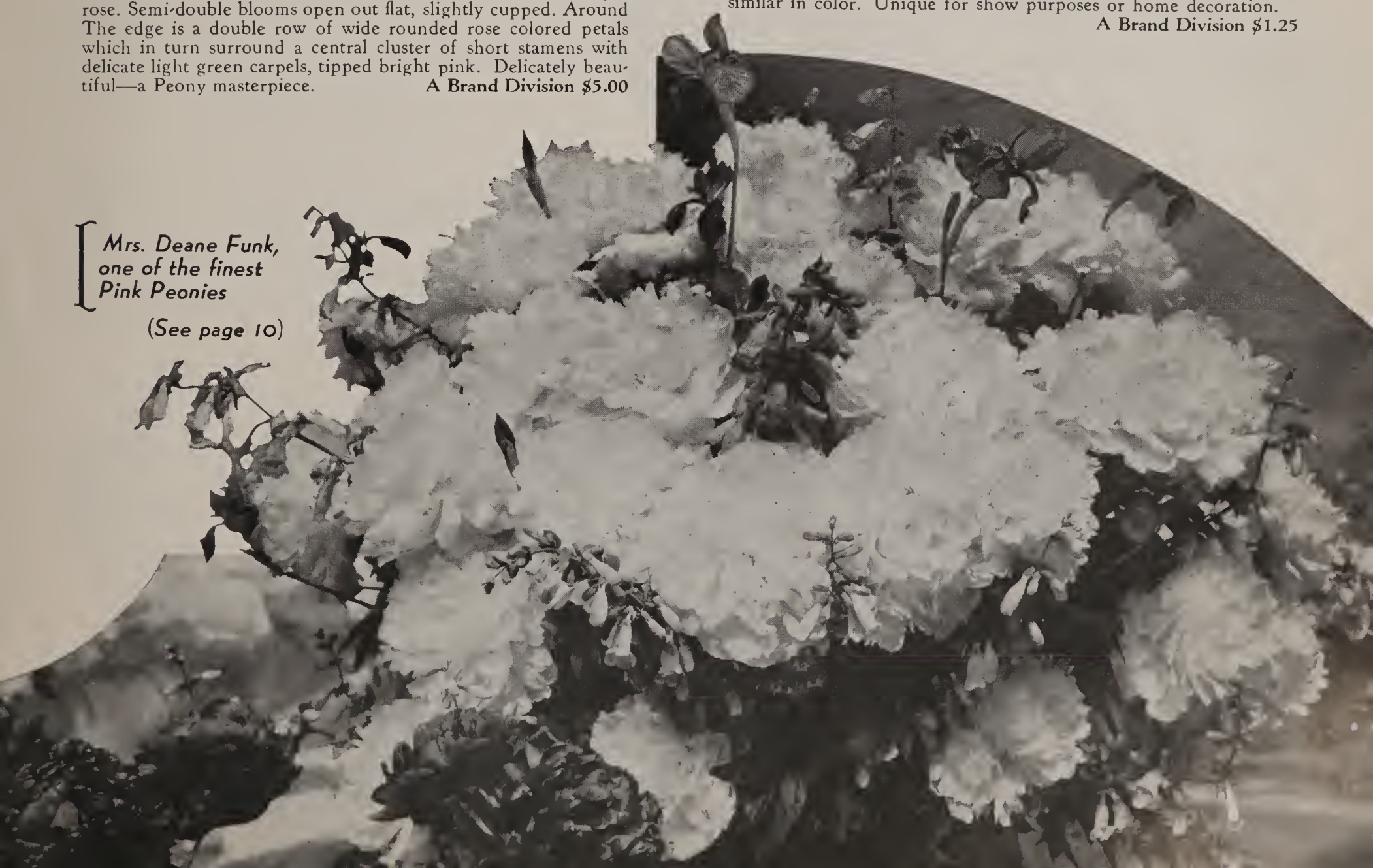
WALTER FAXON

(Richardson)

A remarkable flower, at its best in the show room. Cut in the bud, held in a dark cool room for a day or two, then brought into the light, it develops into a flower of wonderful coloring and exquisite beauty. Color the most vivid of all pinks, the only "real pink" as someone has said. To anyone acquainted with its color, a mere glance over the show room will disclose every vase of this beautiful flower. Flowers medium size, attractive in form. In the fields it does not hold up as well as Souv. de Louis Bigot, to which it is similar in color. Unique for show purposes or home decoration. **A Brand Division \$1.25**

[Mrs. Deane Funk,
one of the finest
Pink Peonies

(See page 10)



**A Special Word
About Our
Collections**

You will notice by the ratings we have not included in any collection a poor Peony. We feel that a first class variety can be grown as cheap as a poor one, so in making up our collections we have kept in mind that the varieties we suggest must please. All roots will be labeled and **Brand** divisions.

2. Special Offer No. 2

Frances Willard Collection

This collection should appeal to those who wish a few of the very best standard varieties at a moderate price.

- 8.6 **Judge Berry.** A very fine early light pink.
- 9.1 **Frances Willard.** A satisfactory white in every way. Midseason.
- 9.1 **Souv. de Louis Bigot.** A free flowering deep midseason pink.
- 8.7 **Mary Brand.** A rich dark bright red. This variety won first prize this season at both the Minneapolis and Rochester shows as the best red.

*A \$5.00 value
for \$4.00 Postpaid*

3. Special Offer No. 3

Our SILVER MEDAL OFFER

Those who are interested in excellent varieties for both home decoration and also for show purposes, should order this fine collection. All Brand originations.

- 9.1 **Martha Bulloch.** A late midseason deep pink. Won the blue ribbon in the class of deep pinks at the Minneapolis Peony Show this season.
- 9.1 **Myrtle Gentry.** A light late pink, our most fragrant Peony. This variety also won the blue ribbon at the Minneapolis Show held this week as the best flower in the class of light pinks. It is also our Silver Medal winner.

- 8.4 **Dovid Horum.** An unusually fine light red with strong stems and wonderful substance. Here is a variety that stands up well under all conditions, a variety that cannot help but give satisfaction.

Pres. Coolidge. New. An outstanding deep pink that will give you fine flowers after all other varieties are gone. This is a fine garden flower and also a fine show flower. On account of its lateness, it is seldom seen in the show room.

*A \$9.00 value
Only \$6.50 This Fall*

1. Special Offer No. 1

Our Perfect Color Combination Offer

It is seldom we make an offer of Peonies and omit a red variety. The four Peonies we offer in this collection make a perfect combination and we know the purchaser will be delighted when they come to bloom.

Phyllis Kelway and Susan B. White are exactly the same type. They are in bloom at the same time. Susan B. White is a lovely creamy white with golden stamens in the form of a collar midway between the rows of petals. Phyllis Kelway is a glowing deep pink with a collar of golden stamens.

Primevere is a fine yellow and when shown with Marie Crousse you have another lovely combination. These four varieties bloom at the same time.

- 8.8 **Phyllis Kelway.** A semi-double pink.
- Susan B. White.** New. A loose creamy white.
- 8.9 **Marie Crousse.** A real light salmon-pink.
- 8.6 **Primevere.** One of the best yellow varieties.

*4 Exquisite Varieties \$6.00 value
Only \$5.00 Postpaid*



Special Anniversary Offers

BRAND'S Outstanding PEONIES

4. Special Offer No. 4

Collection With Our Newest Red

This season we introduced a new red which you will find described under our list of **New Peonies**. We want this red to find its way into many sections of the country this season as it is early, of unusual form, a pleasing shade of red, and a variety we feel sure will give universal satisfaction. For these many reasons, we are offering it in this collection.

- 9.0 **Hazel Kinney**. A fine light early midseason pink.
- 9.0 **Ella Christiansen**. A medium deep pink liked by all. Late midseason.
- Rev. Tragitt**. New. A late midseason fragrant creamy white.
- Jean Cooperman**. New. Our newest early red.

A total value of \$18.00

for \$10.00
Postpaid

5. Special Offer No. 5

Our Highest Rated Collection

In this collection we are placing four of our highest rated Peonies. We have grown these varieties now in sufficient quantity to be able to offer them at a very reasonable price.

- 9.8 **Therese**. A light early pink with a rating of 9.8 which indicates it is practically a perfect Peony.
- 9.2 **Philippe Rivoire**. A late deep red with a rating of 9.2. The highest rated red Peony.
- 9.9 **Le Cygne**. An early creamy white rating 9.9.
- 9.1 **Mrs. Romaine B. Ware**. A midseason light pink rating 9.1.

A total value in these four high rated Peonies of \$8.75

for \$7.00
Postpaid

6. Special Offer No. 6

Our Gold Medal Collection

The best has been saved until the last. The performance of a Peony over a number of years determines its worth. In this collection we have placed our Gold Medal variety, Mrs. A. M. Brand. This variety also won five first prizes in various classes at the Peony Show held in Minneapolis in 1937.

- 9.6 **Mrs. A. M. Brand**. A late pure white.
- Blanche King**. New. An outstanding deep late pink.
- Mrs. Bryce Fontaine**. New. One of our newest rich deep midseason reds.
- 9.0 **Mrs. John M. Kleitsch**. A very late deep pink.

A total value of \$20.00

for \$15.00
Postpaid



SEVENTY
YEARS OF
PROGRESS



SINGLE PEONIES

In recent years, flower lovers have come to see that the more delicate single and Japanese varieties have an artistic value of their own. If varieties have been selected for substance in the bloom, as are those we offer, these types are wonderfully decorative both in the garden and as cut flowers. Another important reason for adding some to your collection is that they come earlier than the double sorts and so prolong the period of bloom.

SPECIAL PRICES ON UNNAMED SINGLES

In our seedling fields we have many beautiful varieties in red, pink, and white, that we have not given names to. Anyone who likes singles and is not particular about keeping the names will be pleased with these varieties.

We will supply three of the colors you wish postpaid for \$1.75, labeled as to color.

8.2 DARKNESS (Brand)
A very dark maroon with darker markings in lower half of petals, surrounding a bold cluster of golden stamens. Tall, strong stems. Good bloomer. Very early. A Brand Division \$1.00

EDITH WEST (Brand)
White. This variety resembles Albiflora. It comes into bloom after Albiflora has gone. The flower is not quite as large, but the petals have more substance and the plant does not have the sprawling habit of Albiflora. A fine landscape variety. A Brand Division \$1.50

FLANDERS FIELDS (A. M. Brand)
Red. A few years ago in one of our seedling beds of many varieties, we noticed a most conspicuous red. Even from 20 rods' distance, this brilliant color stood out from all the others. Every year, in every way, it has proven a splendid flower. A single of the most brilliant red. Two rows of petals surround a large prominent center of golden stamens. Petals of great substance stand out flat; rich and velvety in appearance. A Brand Division \$3.00

8.7 HARRIET OLNEY (Brand)
This variety is one of the very earliest of our singles to give color to our fields. It opens a deep rose but gradually changes to a soft rose-pink. The plant is medium tall with straight stiff stems which hold the flower well erect. A very fine landscape variety. A Brand Division \$1.00

HELEN (Thurlow)
This is a very fine early deep shell-pink. A double row of broad rounded petals surrounds a mass of golden stamens. The stems are tall, strong, and erect. If you are looking for a good pink single this variety will please you. A Brand Division \$3.50

HOGARTH (G. & K.)
A tall vigorous plant producing in great numbers very large lavender-pink single flowers of splendid form and substance. The great blooms are held well erect. A very fine single. A Brand Division \$1.00

KRINKLED WHITE (A. M. Brand)
White. First noticeable in the bud which resembles the bud of a pale pink Tulip just ready to burst. The bud is comparatively small and beautiful in effect. As it opens, it expands into a large flower with great broad, pure white petals, like crinkled crepe paper. Stems tall, straight, slender but strong; clean light green. Award of Merit, Des Moines National Show. A Brand Division \$3.00

LACINIATA

Bright scarlet. If you wish a Peony that will give you bloom about two weeks earlier than *Officinalis Rubra*, you must have this variety. It comes with bloom a few days earlier than the finely cut-foiled Peony, *Tenuifolia*, but is distinctly different from the *Chinensis* varieties. It is not so hard to propagate as *Tenuifolia*, and we feel that it is just as satisfactory. We found this season that it made a very satisfactory flower for our Decoration Day trade. This is a variety that should be in several places in your border. A Brand Division \$2.00; 3 for \$5.00

8.4 L'ETINCELANTE (Dessert)
Dark pink. Very large flowers decidedly cup-shaped; great broad petals of deep bright pink, heavily margined with silver; a large center of bright yellow stamens. A Brand Division \$1.00

MAN O' WAR (A. M. Brand)
An exceedingly bright red with a great deal of scarlet in its color. The guard petals enclose a very large center of intensely rich yellow stamens. The stems are strong and erect. When the plant is well established, each stem carries a large flower. The plant is so covered with these large blooms that the foliage is hardly visible. This is a new variety. A Brand Division \$5.00

8.5 MARGUERITE DESSERT (Dessert)
A midseason white variety thickly powdered with pale rose-pink dots; small cluster of golden yellow stamens in the center; carpels tipped red; pleasing fragrance. Plant tall with strong stems and good foliage; a very free-blooming sort. A Brand Division \$1.50

MELLEN KNIGHT (Brand)
Red. Tall, straight growing; strong enough to hold the flowers well up. Petals long, narrow, and evenly rounded on the edges, giving a beautiful effect both at close examination and from a distance. Color a bright rich crimson. Extra good. A Brand Division \$1.00

MISCHIEF (Auten)
A uniform soft pink that blooms late after most single flowers have passed. This variety always attracts a great deal of attention when exhibited at flower shows. A Brand Division \$2.00

PRESIDENT LINCOLN (A. M. Brand)
Too new to be rated. The great red single. Of the many single reds that we have tested out, this is unquestionably the best. A tall variety with strong, stout stems. Flowers large for a single, held straight up. Two rows of brilliant red petals of most perfect form surround a very striking center of rich yellow stamens. Holds its color well in the sun. A Brand Division \$5.00

8.9 PRIDE OF LANGPORT (Kelway)
Pink. An immense flower of brilliant, soft peach-pink. Wonderfully beautiful; retains its color in the sun almost a week after it opens; the finest light single. A Brand Division \$2.50

SCHWINDT (Goos & Koenemann)
A large early silvery pink. If not disbudded, the large clusters of flowers are very decorative. The plant is tall with showy stems. A Brand Division \$1.00

TENUIFOLIA SIMPLEX
This is the single form of the Fern Leaf Peony. The flower is a brilliant single red consisting of one row of petals surrounding a bright center of yellow stamens. The foliage is very finely cut and the plant after blooming is attractive all through the summer. This variety, the single, is very hardy, and will stand up through the winter in trying locations where the double form might not. A Brand Division \$1.50

WATTEAU (Goos & Koenemann)
Not yet rated. White. Large, snow-white guard petals. Center flesh with a mass of golden stamens. Resembles *Albiflora*, the *Bride*, but comes into bloom much later. A Brand Division \$1.00

Special Offer on Good Standard SINGLES

TENUIFOLIA SIMPLEX. The very earliest bright red.
HARRIET OLNEY. Rose-pink. Very early. Follows *Tenuifolia Simplex*.
MELLEN KNIGHT. A splendid red.
EDITH WEST. A good white.

A \$5.00 Value for \$3.75 POSTPAID

We are growing a number of Peonies we do not list in our catalog. There are new varieties we have not sufficient stock to list. There are older varieties that we cannot use catalog space to describe. If you are interested in any particular variety you do not find listed, write us.



JAPANESE PEONIES



Toro-No-Maki - White

AKASHIGATA (Japan)

Bright rose. A new Japanese variety not yet rated. After growing it for several years, we consider it very satisfactory. Guard petals a bright rose, surrounding a heavy center of filamental petals of bright pink bordered with gold. **A Brand Division \$1.50**

8.5 ALMA (Shaylor)

A midseason light pink, darker at the edges and in the middle of the petals, paling to white at base; center of greenish yellow carpels. Of medium height, strong stems, and good foliage. **A Brand Division \$1.00**

8.0 ALTAR CANDLES (Pleas)

Flesh-pink. Very nicely shaped; an evenly formed row of delicately colored flesh-pink petals, surrounding a center of completely transformed narrow filamental petals which open cream-white. Very floriferous; one of the most dependable Japanese Peonies. **A Brand Division \$1.00**

9.2 AMA-NO-SODE (Japan)

One of the very best of the pink Japanese varieties. A single row of long, evenly rounded, cup-shaped petals encloses a globular center of half-transformed staminodes, yellow at the base, edged gold and faced with pink. Carpels light green, tipped pink. The plant has heavy rich green foliage. **A Brand Division \$5.00**

8.9 AUREOLIN (Shaylor)

A single row of broad guard petals surrounds a center of fully transformed petaloids of deep sulphur-yellow. This variety holds its color well in the sun and if you are looking for a good yellow Japanese Peony you will be pleased with Aureolin. **A Brand Division \$2.00**

8.5 FLAMBOYANT (Japan)

Violet-crimson. Large. Very evenly shaped petals. Color, just a trifle lighter shade than King of England. Center filled with partially transformed staminodes, light yellow edged with gold and red. Also known as Kameno-Kerogoma. **A Brand Division \$1.50**

FUJI-ZOMO-GORONO (Japan)

A large delicate pink with large, well-formed petals surrounding a great center of pure gold staminodes. We consider this one of the very prettiest of the light pink Japanese Peonies. **A Brand Division \$3.00**

9.2 FUYAJO (Japan)

The highest rated dark Japanese Peony. Rich, dark, mahogany-red petals surround a full center of broad petaloids of the same dark rich color as the outer petals. **A Brand Division \$2.00**

9.3 ISANI GIDUI

Origin unknown. A very large midseason white. Two rows of very broad rounded smooth guard petals enclose a center of rich buff yellow staminodes; carpels green, tipped pale yellow. Medium tall; vigorous; free flowering. A beautiful white Japanese variety. **A Brand Division \$5.00**

8.6 KING OF ENGLAND (Kelway)

Red. A rich uniform shade of deep red. Large, uniformly rounded petals of great substance. Center a large tuft of long, self-colored petaloids, prominently edged with gold. **A Brand Division \$1.00**

8.6 MIKADO (Japan)

A tall midseason variety of medium size. The cupped petals are of a deep rich crimson. The center is composed of thick staminodes stained dark rose-red, edged throughout their length and tipped buff-yellow; carpels pale green. A very tall floriferous variety with erect stems. Exceedingly brilliant. Excellent for garden decoration. **A Brand Division \$1.50**

MRS. MAC (Franklin)

A splendid Japanese Peony brought out by Mr. Franklin. We have tried it out some ten years and like it exceedingly. Very strong plant, covered with delicate pink typical Japanese blooms, flushed and flecked with deeper tones of pink. **A Brand Division \$1.50**

PRAIRIE AFIRE

A beautiful new Japanese, first offered by us in 1932. A vase of Prairie Afire exhibited by us at the Des Moines Show was the sensation of the show. Prairie Afire is a new and entirely distinct break in color in Japanese Peonies. The guards are broad and a soft creamy rose with good substance. These surround a great ball of brilliant fiery red staminodes. The flower should be cut in the bud and developed inside when the result is simply marvelous. **A Brand Division \$5.00**

8.7 PRINCESS DULEEP SINGH (Kelway)

Broad guard petals of a soft shade of deep wild rose. Center a spherical tuft of rose and gold staminodes. **A Brand Division \$1.50**

8.7 RASHOOMON (Japan)

One of the best of the Japanese varieties for landscape planting, because of the clean beautiful appearance of the plant itself. Large blossoms. Color a deep rose-red. Center prominent cream-yellow. **A Brand Division \$2.00**

SURUGU

A deep pure red with two rows of rounded rose-like petals. A new variety and one that is very much worth while. **A Brand Division \$2.50**

9.4 TAMAT-BOKO (Origin unknown)

Highest rated Japanese Peony. A very late bright carmine-pink with an attractive center of partially transformed staminodes, yellow at the base, shading lighter, and light pink at the ends, irregularly crinkled and margined gold. The whole flower has much substance and is borne erect on stems of medium height. **A Brand Division \$10.00**

9.0 TORO-NO-MAKI (Japan)

One of the finest of all the white Japanese Peonies. It comes into bloom midseason. A double row of lilac-white guard petals surrounds a center of amber-yellow. A very striking variety in the garden and as a cut flower. An excellent upright grower. **A Brand Division \$3.00**

7.7 YESO

Guards or outside petals pure white; narrow center petals white with yellow shadings. Sometimes tipped carmine. **A Brand Division \$1.00**

A Good Collection of Standard Japs

KING OF ENGLAND. A rich deep red.

AKASHIGATA. A bright rose.

YESO. A pure white.

MRS. MAC. A delicate pink.

A \$5.00 Value - \$4.00 POSTPAID

4

OUTSTANDING COLLECTIONS

If you wish good varieties of Peonies and are unable to make your selection from catalog descriptions, depend upon our long experience and order any or all of the following collections.

Every variety is a good one, and if you could see all of them in a show room, we feel sure you would be more than pleased to include any one of them in a list you might select personally.

These varieties are all described in detail in our general list. You will receive Brand Divisions labeled.

Remember

Remember our prices call for **Brand Divisions**, a root that will give you bloom this season; a root that has been carefully handled, a root that will prove true to name, a root that will bring pleasure to you year after year.



Tenuifolia Simplex

Our Super Early List

If your garden needs color very early in the season, this collection will meet your need. They bloom with the tulips. They will brighten your border.

TENUIFOLIA SIMPLEX
A beautiful bright red single with needle-like foliage. Blooms with us about May 20th. Our very earliest Peony.

TENUIFOLIA FLORE PLENA
Our first double bright red. Usually gone by Decoration Day. Has same needle-like foliage as Tenuifolia Simplex.

OFFICINALIS RUBRA
Our second double to bloom. We can usually cut flowers for Decoration Day. Well-known and well-liked variety.

3 FINE SUPER EARLY REDS FOR \$4.25 Postpaid

Early Flowering Collection

The following four varieties will follow the previous three in rapid succession. They all bloom at the same time. They are all bomb type.

- RICHARD CARVEL.** A fragrant red with no stamens.
- MONS. JULES ELIE.** A huge lilac-pink.
- MME. DE VERNEVILLE.** A white flecked crimson.
- MODESTE GUERIN.** A deep salmon-pink.

A \$4.00 value for \$3.25 Postpaid



Mons. Jules Elie



Georgiana Shaylor

Midseason Varieties

Just as the four in the early collection are passing, the following four will be at their best.

- MARY BRAND.** A rich, bright, deep red.
- EUGENIE VERDIER.** A light, dependable pink.
- MME. EMILE LEMOINE.** A truly good white.
- SOUV. de LOUIS BIGOT.** A lively, deep pink.

A \$4.50 value for \$4.00 Postpaid
Claire Dubois

A Late Collection

These four are among the latest varieties to bloom. Add them to your list to prolong the blooming season.

- FELIX CROUSSE.** A good all-purpose red.
- MME. EMILE GALLE.** A light pink with exquisite coloring.
- ENCHANTRESS.** A splendid pure white.
- CLAIRE DUBOIS.** A deep pink that never fails to please.

4 FINE VARIETIES FOR \$3.75 Postpaid



The entire 15 varieties for \$15.00 prepaid

Standard Garden Iris

You Cannot Go Wrong in Purchasing from this List

We grow large fields of the best of the standard varieties of Iris to supply our Decoration Day trade. However, we find when visitors come to our nursery to make their selections for their own home gardens that these varieties are still old favorites.

We cannot afford to use valuable catalog space for long descriptions. However, those of you who have received our former catalogs and have kept them, will find these varieties with more complete descriptions. You will also find that only a few years ago many were listed as new varieties selling at high prices.

OUR PRESENT PRICES

Choose any ten for \$1.50, postpaid.
Select any twenty for \$2.00, postpaid.

If you wish to plant in quantity for mass effect or if you wish to grow Iris for the cut flower trade, select 10 kinds (10 of a kind), 100 in all, from this list or you may select more of any one kind.

for \$6.00, express collect

Note: Always make a second and third choice so if we run short of any one variety we will not have to delay your order.

APACHE. A bright Indian red.
BEAU IDEAL. A white plicata bordered rich violet.
BEAU SABREAU. Amber standards, red falls.
BLUET. A pale blue self.
BRUNO. A reddish bronze bicolor.
CASSANDRA. A fine deep purple.
CHIEF. A late royal purple.
COL. LINDBERGH. A deep blue bordered light blue.
CORONATION. A deep golden yellow.
CORRIDA. A late cornflower-blue.
DAMOZEL. White plicata bordered lavender.
DE BUSSY. Early bright pink.
DEJAH. A very fine light blue.
DREAM. A favorite soft rose-pink.
DUKE OF YORK. A large light blue.
F. B. SCHERMERHORN. A super light lavender-blue self.
FRA ANGELICA. Bronzy gold, overlaid lavender.
GEO. TRIBOLET. Violet standards, velvety red purple falls.
GEO. YELD. S. light apricot, F. rose-crimson.
GOLD CREST. Intense blue self, prominent gold beard.
HARMONY. Uniform deep blue-purple.
HARPALION. Tall, large lavender-blue.
HENRI RIVIERE. S. yellow, F. mauve.
IDEAL. A bicolor of light and deep blue.
JANE WILLIAMSON. A pastel pink blend.
JAPANESE. Japanese in form, purple combinations.
JUMBO. Violet-mulberry-purple.
KOCHI. Very early deep purple.
MAGNIFICA. Enormous tall early pink bicolor.

MAJESTIC. S. light lavender, F. rich raisin-purple.
MARY BARNETT. Beautiful light blue self.
MIDWEST. White, peppered bright rose dots.
MILDRED PRESBY. S. white, F. rich ruby.
MME. CHEREAU. White bordered deep blue.
OPERA. A favorite red variety.
PARC DE NEUILLY. A fine early dark purple.
PHYLLIS BLISS. A lovely lilac-pink.
PRIMROSE. S. amber, F. light yellow.
PRINCESS WENONAH. A fine light pink.
PROSPERO. S. huge lavender, F. deep purple.
QUAKER LADY. A blend of buff and purple.
RHEINGAUPERLE. A pink edged silver.
RHEIN NIXE. White standards; purple falls.
RHEINTRAUBE. A fine two-toned blue.
ROBERT W. WALLACE. A rich black-purple.
ROMANCE. A blending of bronze and old rose.
ROSA BONHEUR. Pale yellow, overlaid lavender.
SIR GALAHAD. S. mauve, F. pansy-violet.
SUSAN BLISS. A good deep pink self.
TAJ MAHAL. A very fine white.
TENEBRAE. A dark maroon-purple.
TROSTRINGER. The loveliest pale pink.
VESPER GOLD. A late yellow.
VIKING. An intense blue bicolor.
WHITE QUEEN. A glistening pure white.
WILD ROSE. A well named pink.
ZADA. A free-flowering white.
ZANARDALIA. One of our best blues.



10 of Our Most Popular Varieties

Chosen from Our Standard List

While our Iris fields were at their best many visitors came to mark their selections. In going over the orders taken from the above varieties we find the following were the most popular ten.

DAMOZEL
DE BUSSY
DEJAH
FRA ANGELICA
MAGNIFICA
RHEINGAUPERLE
RHEINTRAUBE
TROSTRINGER
VIKING
WHITE QUEEN

A Very Satisfactory

10 For ONLY \$1.50
Postpaid

Many like to plant Iris in clumps of 3 of a kind. You may choose any 5 varieties, 3 of a kind, making 15 in all

for ONLY \$1.50 Postpaid

We will send you one each of any 50 varieties chosen from this page, all labeled

for ONLY \$5.00 Postpaid



Our Iris List

The Best of the Old with a few of the Best of the New

We do not list each season all the varieties we grow. We are multiplying our stock of some of the newer kinds and also testing out these varieties to see how they thrive in our Minnesota climate. We add these new kinds to our general list as our stock becomes sufficient and we find them desirable.

Select any 10 Iris priced at 25c each for \$2.00, postpaid.

Always make a second and third choice to avoid delay in filling your order.

ALABASTER. A pure glistening white of splendid substance and finest form. The flowers are of medium size and, taken all in all, one of the very finest whites that we have. Edges slightly ruffled; beard nearly white with shadings of yellow. 36 inches. 25c; 3 for 50c

ALTA CALIFORNIA. This tall flowering variety is one of the best of the clear deep yellows. Its faintly bronzed falls adds to its striking beauty. Stalk well branched. 42 inches. 50 cents

AMBASSADEUR. In richness of coloring, fine form, and growing habits—truly a beautiful Iris. Standards smoky, reddish violet. Falls dark velvety purple-maroon. Very rich. 40 inches. 25c each; 3 for 50c

APHRODITE. A very tall growing Iris that makes a most imposing and charming garden variety. A beautiful almost self deep pinkish lavender with the base of the falls just a trifle deeper toned. The effect is most striking because of the large white halo which surrounds the delicate yellow beard. 48 inches. 25c each; 3 for 50c

ASIA. Standards pale lavender; falls light violet-purple. Both standards and falls of immense size. Although an old Iris, many still consider this one of the exceedingly good ones. 48 inches. 25c each; 3 for 50c

AUREX. Standards a bright clear yellow. Falls velvety blackish crimson-purple, with a narrow well-defined edging of buff. One of the very highly recommended new Irises. 38 inches. 25 cents

BALDWIN. One of the largest of Irises with peculiarly shaped petals which give it a very distinct and pleasing appearance. A self of a pleasing heliotrope shade that is very noticeable in the field. 40 inches. 25 cents

BIEWULF. (Schreiner.) 32 inches. This new Iris was sent out by Robert Schreiner last year. It is one of the very best of the new varieties introduced during the past few years. It is a true maroon-red, a rich deep dark red with no purple. It is a large early variety that you will like. \$6.00

BLACK WINGS. A large, heavy textured flower of a deep midnight blue overlaid with a frosty black luster. Vigorous, well branched and a wonderful flower. 36 inches. 50 cents

BLUE BANNER. Standards frilled light lavender-blue. Falls rich velvety deeper blue shading to a pale blue at the edges. A most charming new Iris. This is still the leader among the blue bicolors. 26 inches. 25 cents

BLUE HILL. The bluest of the clear toned blue Irises. Slightly deeper toned than Sensation and larger. A perfectly branched Iris. A splendid real deep blue. 40 inches. 50 cents

BLUE MONARCH. A fine light-toned clear blue self. A well-branched stalk. Plant vigorous and hardy. This is a Sass introduction of fine habit. 42 inches. \$1.00

BRANDYWINE. One of the neatest and prettiest of Irises. Mr. Farr did well when he gave us this most beautiful variety. A light blue-toned lavender self, with a prominent red-orange beard. A flower of unusually fine form. 25c each; 3 for 50c

BUECHLEY'S GIANT. An outstanding new variety. The blooms are of the greatest size and also of the most perfect and exquisite form. One of the finest of the blues. A variety you will like. 44 inches. 50 cents

BUTO. A very free blooming Iris which resembles Mme. Gaudichau very much but because of a slight difference in season, is very desirable. A wonderful rich deep velvety purple of fine form. A profuse bloomer. 36 inches. 25c each; 3 for 50c

CALIFORNIA GOLD. (New.) A deep yellow self of the largest size. A wonderful new yellow that seems to be an all-around good flower, exceedingly pleasant to look at. The stamens and falls are as large as those of Mrs Valerie West. An A-1 yellow Iris. 36 inches. \$4.00

CAPRI. A fawn-yellow introduced by Robert Schreiner in 1936. It is medium tall and makes a splendid variety to plant in the foreground. A most pleasing variety in its color class. 30 inches. \$4.00

CARDINAL. One of the most superb of the Dominion family. Standards, lavender overlaid with rose. Falls rich raisin-purple, very broad and rounded. Most striking; wonderfully rich. All who see it growing in our fields are impressed with its immense size, the perfection of its blooms, and the wonderful substance of its petals. 36 inches. 25c each; 3 for 50c

CHALLENGER. Standards very large, overlapping, dark purple; falls dark blackish violet. Flaring white beard, tipped orange. One of the very largest intermediates. The coloring of this Iris is about the richest of all Iris. 36 inches. 25c each; 3 for 50c

CHEERIO. 40 inches. A fiery bicolor with lustrous tan standards; brilliant velvety red falls, and a heavy orange beard. An excellent red that is sure to please. \$4.00

CHROMYLLA. A very large flower in a very lovely shade of lemon-chrome. 36 inches. 50 cents

CHURCHMOUSE. A new and distinct color among Iris. A uniform soft brown. Distinctly different from any other variety we grow. 38 inches. 25c; 3 for 50c

CLARA NOYES. 36 inches. A beautiful blending of yellow, orange, and apricot which makes it distinctive. Somewhat similar to the Talisman Rose. 35 cents

CLAUDE AUREAU. 34 inches. A very fine variegata with large standards of greenish golden yellow which makes a pleasing contrast with long falls of a rich bordeaux-wine-red. 50 cents



CLARIDAD. A wonderful break in color from all other Irises. A real deep blue both in standards and falls. Even the beard is blue, tipped with light yellow. Very rich. 30 inches. 25 cents

COLUMBINE. A medium sized white Iris of beautiful form and finest texture. A very worth-while variety. 25c each; 3 for 60c

CROWN JEWEL. A redder Clara Noyes, giving a burnt orange mass effect. Valuable because of its striking color effect. 34 inches. \$1.50

CRYSTAL BEAUTY. This tall, large pure white makes a wonderful background for all other colors. If you wish one of the the very finest of all the white varieties order this one. 40 inches. \$2.00

DAUNTLESS. This fine velvety red Iris was awarded the biggest honor a variety can receive, the Dykes Memorial Medal. The coloring in both the standards and falls is a rich velvety red. It will be some time before this variety is surpassed for color. 40 inches. 50 cents

DEPUTE NOMBLLOT. This Iris is also a winner of the Dykes Memorial Medal. An Iris of gigantic form and the finest coloring. Standards coppery red, flushed golden bronze; falls rich claret-crimson. Classed as the finest of all Irises. 52 inches. 35 cents

DESERT GOLD. A fine early flowering medium yellow of the largest size and most perfect form. Desert Gold is the greatest advance in yellow Iris we have seen. 32 inches. 25 cents

DOGROSE. A superb pink Iris with large, oval-shaped flowers in a uniform shade of rose-pink. A tall, free-flowering sort. Fine landscape variety. 44 inches. 25 cents

DOLLY MADISON. Flowers very large, often 4½ in. high by 5 in wide. It is a seedling of Lent A. Williamson and carries the good sturdy qualities of that parent together with even greater size. An immense mauvette-lilac-pink of most outstanding quality. 35 inches. 25c each; 3 for 50c

DOROTHY DIETZ. An Iris of unusual coloring. Standards a light chicory-blue; falls pansy-violet. 36 inches. 35 cents

EASTER MORN. From the name one would expect this new variety to be a white. It is similar to Purissima except the flower is somewhat larger and has an orange-yellow beard. 38 inches. 60 cents

ECLADOR. (Cayeux). A very fine large yellow having excellent form and texture; Standards canary-yellow; falls bright yellow veined brown at the haft, orange-yellow beard. The best yellow variety to date. 34 inches. \$2.00

ELEANOR ROOSEVELT. This Iris has been awarded the Hutchenson Gold Medal as the best fall-blooming Iris. A deep purple self with very rich falls. It will bloom a month in the spring and then for 3 months in the fall. 35 cents

ELIZABETH EGELBERG. A strong growing, tall variety that produces an immense flower of beautiful mauve-pink with fine dome-shaped standards and large, broad falls well expanded. Standards light mauve, falls a deeper pink. Very fine. 48 inches. 25 cents; 3 for 50c

ELSINORE. A charming primrose-yellow bordered with violet-crimson. A yellow blend that is entirely different from any other Iris and almost impossible to describe. We know you will like it in your garden. 36 inches. 25 cents; 3 for 50c

EREBIAN. 40 inches. A rich deep Bordeaux-red self with a heavy gold beard. The flowers are large and freely produced on tall well-branched stalks. 40 inches. 35 cents

ETHEL PECKHAM. A large, fragrant red-toned variety, the most nearly red of all Irises. Received Honorable Mention American Iris Society. 34 inches. \$2.50

ETHELWYN DUBUAR. A very attractive deep pink. Standards a clear red with a shadow of blue; F. large and of a rich deep shade of red. 40 inches. 50 cents

EUPHONY. Beautiful blend of chamois-yellow. Ruffled flowers on well-branched stems. A delightful flower. Very floriferous. We think this very fine. 32 inches. 25 cents; 3 for 50c

FOLKWANG. Standards light bright pink; falls claret-red with brownish yellow veinings. A wonderful blending of colors. One of the very best of the many really good Irises sent out by this famous firm. 30 inches. 25 cents; 3 for 50c

FRIEDA MOHR. A beautiful flower both in form and color. Unusually tall with clean foliage; ideal for either mass planting or for specimen flowers. A pink bicolor. Standards a light pinkish violet; falls a deep lilac-rose. 38 inches. 25 cents

GAYNELLE. A large pure yellow. The largest yellow in our fields. Standards a pure bright medium yellow; falls just a trifle deeper and brighter. Highly perfumed. Comes into bloom right after the primulas. 24 inches. 35 cents

GLEAM. 42 inches. A fine large flower of a uniform soft blue. It is a profuse bloomer and a fine Iris in its class. 25 cents; 3 for 50c

GOBELIN RED. Compared with the color chart this is a true ox-blood red, showing no purple in its make-up. Flowers are of medium size, very finely formed and carried. Stems and leaves are thin, strong, erect. This is the best red for color that we have seen in Iris. 30 inches. 25 cents; 3 for 60c

GOLDEN HELMET. 36 inches. A huge flower resembling King Tut in color. The standards are ruffled and of a chestnut color, while the falls are a rich ox-blood red. Each \$3.00

GOLD IMPERIAL. Although an old variety, we still consider this one of the few good yellows. A pure yellow self of beautiful coloring. 34 inches. 25 cents; 3 for 50c

GOLDEN WEST. 28 inches. Golden yellow in color with semi-flaring falls slightly flushed olive. 50 cents

HAPPY DAYS. A uniform bright yellow with a slight undertone of orange on the falls. An immense new yellow with many large flowers open at one time. 44 inches. \$3.50

HELIOS. 38 inches. Huge flowers. A pure lemon yellow self; falls delicately penciled rose. 35 cents; 3 for 75c

IMPERIAL BLUSH. 38 inches. A large, fragrant blush-pink, with long drooping falls set off by a lemon-yellow beard. 75 cents

INDIAN CHIEF. One of the very best of the entire range of 2-toned reds. Standards a beautiful violet-rose; falls deep rich glowing velvety red. Splendid for massing. 36 inches. 25 cents; 3 for 50c

JEAN CAYEUX. An outstanding introduction that was awarded a Certificate of Merit by the French Horticultural Society and in 1931 it won the Dykes Medal for the finest Iris of the year. It is an unusual light buff described by some as "coffee colored" and by others Havana-brown. It is well branched, over 3 feet tall, and flowers over a long season. \$1.00

JUBILEE. Standards a rich peach color; falls creamy white, dotted and veined light brown. Flower ruffled. 30 inches. 25 cents; 3 for 50c

KING JUBA. Standards old gold; falls Dahlia-carmine. Honorable Mention American Iris Society. A tall late variety. A wonderful new Iris. 40 inches. 25 cents

KING TUT. One of the brightest of all the Irises. General garden effect bright glowing red. Standards cocoa-brown; falls Hessian brown. Every lover of a red Iris should have this one. 32 inches. 25 cents; 3 for 60c

KLAMATH. A violet and purple bicolor of perfect form and excellent substance. A larger flower than Lent A. Williamson with much richer coloring. 36 inches. 25 cents; 3 for 50c

LABOR. Standards dark violet-heliotrope; falls darker shade than standards. General effect, reddish copper. A wonderful color, very distinct. 30 inches. 25 cents; 3 for 50 cents

LADY PARAMOUNT. 44 inches. A gigantic soft primrose-yellow, with firm silken texture. We consider it one of the finest yellows we are growing. \$3.50

LARGO. A flower of extra fine form and size. Tall and well branched. A harmony of wax-yellow, mustard-yellow, and citron-yellow, with the falls overlaid mauve. 40 inches. 25 cents; 3 for 50 cents

LEGEND. A very rich velvety crimson-claret, with a prominent gold beard which adds greatly to the beauty of the flower. Huge flowers of fine form. 36 inches. 35 cents; 3 for \$1.00

LENZSCHNEE. A broad-petaled white of fine form, with a pale china-blue flush on the falls. 24 inches. 25 cents

LOS ANGELES. Immense white flowers of beautiful form and great substance, the standards faintly edged blue. An outstanding Iris. 38 inches. 25 cents



Rameses

MAGNA CHARTA. A pure white flower, strikingly dotted with blotches of intense blue ranging in size from minute spots to blotches a half an inch long to an eighth inch wide. A very distinct and attractive Iris. You might look our Iris fields over and you will find no other like this one. If you wish something different order Magna Charta. 30 inches. \$1.00

MANON LESCAUT. 40 inches. Some might call this a plicata. Standards white heavily overlaid clear violet with brown reticulations at the base. Falls rich white heavily edged deep violet with an orange and violet beard. A very unusual and striking variety and one you will like. 50 cents

MAORI PRINCESS. The richest of all the bicolor blends. Standards intense golden yellow; falls a very rich velvety maroon, with a well-defined gold border. A bicolor we like very much. 24 inches. 25 cents

MARY GEDDES. Standards light salmon; falls same color overlaid with Pompeian red. A most outstanding new color in almost a self-ochraceous salmon. Very striking. Winner of the Dykes Medal in America in 1936. 38 inches. \$1.00

MELCHIOR. 30 inches. An unusually fine deep velvety maroon self with a heavy beard of bronze-yellow. An Iris of a form that is particularly pleasing to the eye. 25 cents; 3 for 50c

MORNING SPLENDOR. Standards Petunia-violet; falls velvety raisin-purple; general effect rich crimson. Everything considered, we think there is no greater, no finer Iris than this one. In size, form, color and substance, it is everything desirable. Very fragrant; free blooming. Awarded the Silver Medal of the Garden Club of America in 1926. 42 inches. 25 cents; 3 for 50c

MOUNT ROYAL. Here comes a very rich red-purple, the standards a shade lighter than the falls. Very large, very rich, and a most splendid flower for the house where it shows off to unusual advantage. 36 inches. 25 cents

MRS. MARION CRAN. One of the very finest of the soft rose-pinks. Large flowers of perfect shape. For a real pink, this is the one to order. 48 inches. 25 cents; 3 for 50 cents

NENE. S. lilac; F. light red with lighter margin. An impressive variety which stands up well. Very large and striking. One of the best flowers in a show room. 36 inches. 35 cents

NOCTURNE. 36 inches. A very rich, dark, velvety, blue-purple self that holds its large flowers well erect on strong stiff stems. One of the darkest of all. 25 cents



Euphony

RED DOMINION. 42 inches. Clear deep red standards and full flaring velvety red falls. Honorable Mention American Iris Society. This red Iris is one of the most beautiful and outstanding of all the red Irises. 50 cents

RED ORCHID. The reddest of the intermediates S. violet-carmine; F. rich velvety violet-carmine. Dark yellow beard. 28 inches. 25 cents

RED RADIANCE. A tall well-branched Iris with large beautifully formed flowers of very decided red tones. This is said to be the brightest of all the red-toned Irises. 34 inches. 50 cents

RED ROBE. General effect a large rich ruby-red. S. deep petunia-violet; F. deep velvety violet-red. Bright yellow beard. 30 inches. 75 cents

RHEA. A tall, well-balanced flower of good substance. An improved Isoline. S. lilac-pink; F. purplish old rose, golden at the throat. 36 inches. 25 cents; 3 for 50 cents

ROSE DOMINION. 38 inches. A beautiful American Beauty Rose color, flaring falls and a vivid golden beard. A very pleasing Iris. 25 cents

SAN FRANCISCO. A very tall plicata similar to Los Angeles. A giant white, edged lavender-blue. Winner of the Dykes medal. 38 inches. 30 cents

SEMINOLE. Soft violet-rose. Falls rich velvety crimson. Brilliant orange beard. Midseason. 28 inches. 25 cents; 3 for 50 cents

SENSATION. A wonderful cornflower-blue Iris of perfect form and substance; great big flowers on tall, stout stems. A wonderful blue that was well named. Awarded the Silver Cup for the most outstanding flower in the Boston Show in 1931. 36 inches. 25 cents; 3 for 60 cents

SHINING WATERS. A clear, clean, bright blue with waxlike petals. Grows to be about 4 feet tall with many unusually large blossoms open at once. A beautiful blue. 36 inches. \$1.25

SHIRVAN. Standards pale shade of lustrous brown with yellow tones prevailing; falls semi-flaring and rich, heavy red-brown. This Iris is the richest in coloring of the Bruno types. 33 inches. 75 cents

SIMONE VAISSIERE. Standards white, slightly shaded blue; falls violet-blue. Resembles Lord of June, though standards are of better substance; more brown in the falls. 25 cents

SIR KNIGHT. A large, deep violet self of glossy texture. Standards domed; falls flaring. \$2.00

SIR MICHAEL. 38 inches. One of the finest Irises ever brought out. Standards clear lavender-blue; falls a rich velvety red-purple; beard a brilliant red-gold. A great Iris. Many regard this as the finest of all Iris. 25 cents; 3 for 50 cents

SOUV. DE MME. GAUDICHAU. Standards very rich deep blue-purple; falls deeper shade, almost black-purple. Beard blue, tipped yellow. A wonderful Iris with every imaginable good quality. Has won more awards than most any other. In its color class it has no rival. 36 inches. 25 cents; 3 for 50 cents

THAIS. 38 inches. A beautiful large pink flower with strong stems. A much clearer pink than Susan Bliss. Extra fine. 25 cents; 3 for 50 cents

TIGER TIGER. A red Iris with tan standards. The falls are truly red. The blossoms are large and are borne on 3-ft. stems. A splendid and an unusual variety. 50 cents; 3 for \$1.00

TINT O' TAN. A combination of bronzy tan and straw-yellow coloring. The flowers give a brown effect and are held well on 40-inch stems. A popular and unusual variety. \$3.00

TITAN. A Dominion seedling. Standards light violet-blue; falls violet-purple. When first introduced, it sold at \$50.00 per rhizome. Very striking, of fine form and texture. Hardy plant; strong, massive stems. 38 inches. 25 cents; 3 for 50 cents

TRUE CHARM. A beautiful plicata of elegant form. Flowers white with delicate blue-lavender margin. Hardy, vigorous grower. 40 inches. 25 cents; 3 for 50 cents

VERT GALLANT. A very large flower of great substance, brilliant coloring and the finest form. Standards are a blending of copper, fawn, and soft lilac; falls intense garnet-red with bronze edge. An outstanding Iris in every way. 40 inches. 50 cents

VESPER GOLD. A distinct yellow with soft violet flush and gold and maroon veinings on the falls. A late variety. 40 inches. 25 cents; 3 for 50 cents

WEDGEWOOD. Standards and falls an even tone of rich blue. Large flowers with prominent white beard. As the flower ages it fades to a lighter blue which doesn't mar its beauty. Prolific. 30 inches. 25 cents; 3 for 50 cents

WM. MOHR. An immense flower, lilac in color, veined purple; a pogocyclus hybrid which must have protection in the winter to do well. This is a real sensation to people as it is entirely different. Northern grown stock. 30 inches. 25 cents; 3 for 60 cents

WHITE AND GOLD. A large pure glistening satiny white. No markings. Brilliant golden beard and flaring falls. 25 cents; 3 for 50 cents

YELLOW MOON. Standards and falls a soft yellow. A variety of wonderful texture. A real addition to any garden. 36 inches. 25 cents; 3 for 50 cents

YVES LASAILLY. 40 inches. A distinctive white Iris with a pearly blue flush on each petal. 25 cents



Clara Noyes

OLD GOLD. Standards primoline-yellow, ruffled; falls old gold, overlaid buff; a few stripes on haft. Distinct yellow beard tipped brown. 28 inches. 25 cents; 3 for 60 cents

OMAHA. An unusual and very fine flower with soft rose standards and old rose falls. Rich golden styles and bright orange beard. General color effect red. 30 inches. 25 cents; 3 for 50 cents

PERSIA. 38 inches. A blend of pale blue, lavender, gray and bronze, with a smoky veil enveloping the entire flower. The blooms are large and produced in great abundance. 35 cents

PHOEBUS. A tall uniform lemon-yellow. Flowers of most perfect form and great substance. Award of Merit in France. 36 inches. 40 cents

PINK OPAL. Large flowers on 40- to 46-inch stems. A sister flower of Pink Satin which it resembles very much only it is a little deeper in tone. Many like it better. A rich pure pinkish lilac self. 38 inches. 35 cents; 3 for 75c

PIONEER. An immense red-purple of beautiful form. Standards large, bright, ampara-purple; falls very broad and of great substance, warm deep pansy-purple. Wonderful flower. 40 inches. 25 cents; 3 for 50 cents

PLUIE D'OR. The very best yellow Iris. Flowers larger and of finer form than Gold Imperial. Tall well-branched stems. Received a Dykes Medal. 36 inches. 25 cents; 3 for 50 cents

PONGEE. 38 inches. A light buff-colored self with a beautiful frosty appearance. A bright golden beard enlivens the flower. 25 cents

PRESIDENT PILKINGTON. An immense new flower from France. One of the most striking and original of the new flowers. Standards pale buff with a faint bluish suffusion; falls wide flaring lavender-blue, with a buff-yellow suffusion paling at margins. 40 inches. 25 cents; 3 for 60 cents

RAJPUT. A large, bright violet self of fine form and good substance, exceptional in vigor and growth. 24 inches. 25 cents; 3 for 50 cents

RAMESES. An immense new Iris that has rapidly grown in public favor. Plant large, strong and sturdy. Very floriferous. Standards large, domed and of beautiful soft, even, light russet flushed with pink-lavender; falls large, flaring, deep pink. When the sun in the early morning or at the close of the day shines upon this flower it is simply wonderful. This variety was awarded the Dykes Medal in 1932 (the highest award an Iris can receive). 38 inches. 25 cents; 3 for 50 cents

Our "Old Master's" Collection

A Collection of Desirable and Dependable Varieties
Priced so as to Meet Every Pocketbook

A Fine Collection of IRIS

ALABASTER. A fine pure white.	25 cents
CLARA NOYES. A rich yellow-orange blend.	35 cents
DAUNTLESS. A large rich red self.	50 cents
DOLLY MADISON. A large mauve-pink blend.	25 cents
GOBELIN RED. A deep ox-blood red.	25 cents
INDIAN CHIEF. A big bright red bicolor.	25 cents
KING TUT. A flashing chestnut-red.	25 cents
MORNING SPLENDOR. The unbeatable red-purple.	25 cents
PINK OPAL. A large lilac-pink self.	35 cents
PLUIE D'OR. One of the best deep yellows.	25 cents
SENSATION. A pure cornflower blue.	25 cents
WM. MOHR. Soft violet, veined manganese violet.	25 cents

\$3.45

If taken separately this collection amounts to \$3.45.
Taken as a collection it will be mailed to anyone in con-
tinental United States for

\$2.25

Postpaid



BRAND'S LILACS
are all on their
OWN ROOTS

These bushes come to you all ready to plant. They need no trimming. Now that the French Lilac can be propagated successfully on its own root, there is no longer any reason why a Lilac propagated in any other way should be planted.

Planting Instructions

Watch for an orange tag which you will find attached to your shipment. On this tag you will find printed instructions for planting and caring for your Lilacs.

DISCOUNTS

We allow the following discounts on French Lilac orders according to the size of the order:

No discount on orders below \$10.00.

10% on orders between \$10.00 and \$25.00.

15% on orders between \$25.00 and \$50.00.

20% on orders of \$50.00 or more.

Note. Do not include collections when computing your discounts, as liberal discounts on them have already been allowed.

Brand's **FRENCH LILACS**

New Improved

With Blossoms so Large and so Beautiful One Can Hardly Imagine That They are Related to the Common Lilac

We have experimented with the propagation of the French Lilac for over 20 years to find how to grow it in a practical way on its own roots. We have discovered how to do this successfully. Before we were able to do this we never had any success with French Lilacs in the Minnesota climate. We have never had any trouble with our French Lilacs dying out since. A French Lilac must be on its own root to do well in a severe climate like that of Minnesota.

Growing an Improved Lilac on its own root is a slow process. It actually takes us two years longer to produce a Lilac of a given grade on its own root than it would take to produce the same grade on privet. Yet we insist on sending out only those Lilacs that will prove satisfactory, so our customers can depend upon receiving only genuine own-root plants.

We have a wonderful deep rich alluvial soil; the soil in which the Lilac revels. This contributes to strong thrifty tops with a large, well-balanced root system.

Our plantings of Lilacs have increased from year to year until we now have for our 1938 sales as fine and as large a collection as you could possibly find anywhere.

This is probably the largest collection of high class French Lilacs in the world. We are in a position to offer our customers a first class article in every respect.

LILAC DESCRIPTIONS

Many of the peculiarities of any variety of Lilac are easily described. One can tell at a glance whether the florets are single, semi-double, or double, or whether the panicles are simple or compound, long or short, loose or compact.

But when it comes to color probably no two persons would name exactly alike the colors of any dozen varieties of Lilacs.

A little explanation may help to interpret our descriptions. When we say a Lilac is red, we do not mean that it is scarlet; or, when we say it is blue, we do not mean sky-blue, as an occasional customer seems to expect. The truth is, the colors of all Lilacs are soft. They are made up of different proportions of blue and red with more or less addition of white. If the red predominates in the light shades, we may call the color pink or rose. If the blue predominates decidedly, we may call the color blue; but if the blue while dominant is less pronounced we may call it lavender or lilac or violet or mauve.

In the dark colors, if the red predominates decidedly we may call it red, as with Reaumur. If the blue predominates we call it purple. Then to be more definite we sometimes say reddish purple or purplish red.

It must be remembered also that, aside from the difficulty of getting an exact name for the normal color of a variety, this color may change somewhat with the season. For example, this year we had cool, cloudy, and rainy weather throughout the Lilac season. Consequently, the colors were all darker than usual. The character of the soil also sometimes changes the color slightly.

We make our descriptions as clear as we can, but we understand how difficult it is for a purchaser who cannot visit a Lilac field during the blooming season to make his selection. However, we list only good varieties, those that should give much pleasure to those who plant them.



THE ABOVE PICTURE

is from a photograph of four average-sized plants of our Own Root French Lilacs, showing one plant of a two- to three-foot size, and three plants of a three- to four-foot size.

The line running through each plant shows the depth you should plant your bushes.

To one who has never grown an Own Root French Lilac, the price may seem high. But we feel sure you would not wish to care for a plant for five years and offer it for a price below what we are charging.

Our French Lilac List

Henri Martin



ADELAIDE DUNBAR. Semi-double. Opening blossoms are dark purplish red, changing to a bright red as they open. The clusters are large and compound. After this flower has opened it is one of the richest of all the bright dark reds.

2 to 3 ft., \$2.00; 3 to 4 ft., \$3.50

ALPHONSE LAVALLEE. Blue. Double. Tall, robust growing; makes a very shapely bush. Panicles long, broad, shapely, and compact. Opens an intense blue, but as the florets develop it changes to a beautiful shade of lavender. Splendid sort.

2 to 3 ft., \$1.50; 3 to 4 ft., \$2.00

BELLE DE NANCY. Double, large; satiny rose, showing white towards the center. General color effect deep pink. One of the best pinks among the older varieties.

2 to 3 ft., \$1.50; 3 to 4 ft., \$2.00

BERRYER. Semi-double. A beautiful clear mauve with deeper shadings toward red. One of the very choicest of the early hybrids; distinctly different; also the latest of the new line of Lilacs. Exceedingly pretty.

3 to 4 ft., \$2.50; 4 to 5 ft., \$3.50

BUFFON. Single. One of the very earliest of the early hybrids. Individual florets large and of fine substance. We think Buffon very choice. Color is a rich delicate mauve-pink of the finest quality. Panicles very large. Best single pink Lilac. We wish to impress upon our customers that if they are looking for a pure single pink that Buffon is the best.

3 to 4 ft., \$2.50; 4 to 5 ft., \$3.50

CHARLES JOLY. Double. Purple-red. One of the very best of the double dark reds. Bush medium both in size and height, limbs growing upright. Rather large blooms, held erect well above the foliage; very striking.

2 to 3 ft., \$2.00; 3 to 4 ft., \$3.00

CHARLES SARGENT. Double. Medium tall growing variety. Very shapely and vigorous plant. Color a beautiful light lavender. Very double flower with florets very full; long narrow pointed petals.

2 to 3 ft., \$1.50; 3 to 4 ft., \$2.00

CHARLES X. Single. One of the older varieties that is still in great demand because of its profuse blooming qualities and also because it is one of the very best varieties of all for cut flowers. A bluish violet-red.

2 to 3 ft., \$1.25; 3 to 4 ft., \$1.50

CONDORCET. Semi-double. The color is a clear, rich, light blue. Panicles very large, broad, compact. The plant is very thrifty and grows upright. Of medium height.

2 to 3 ft., \$1.50; 3 to 4 ft., \$2.00

CONGO. Immense, single, wine-red. A splendid growing variety that produces immense blooms in the greatest profusion. The blossoms when they first open and for several days are sensational because of their great size and rich color. Then the color changes to a dull purple. When this Lilac is in its prime it is one of the very choicest. We have now worked up a fair stock for our fall sales and have reduced our prices accordingly.

2 to 3 ft., \$3.00; 3 to 4 ft., \$4.00

DECAISNE. Single. For about ten years we have had this wonderful variety blooming in our grounds, and each year we think more of it. It is a true light blue. The panicles are large, nicely formed, and many of them. This is a variety that should be in every fine collection.

2 to 3 ft., \$4.00; 3 to 4 ft., \$5.00

DE SAUSSURE. Double. Medium sized, compact, slender spike. Buds open deep wine-red with touches of white in the points of the petals, giving the bloom an interesting effect. As the flower develops it fades to a deep rose color. We found this season that many people admired this variety on account of its unusual color effect.

2 to 3 ft., \$1.50; 3 to 4 ft., \$2.00

LILAC TIME. Usually our Lilacs are at their best around Decoration Day. During this time you can see our Lilacs both in our fields and show room. Here is the place to study varieties and make your selection. You will enjoy every hour spent with us.

EDITH CAVELL. Double. A very showy, pure milk-white; buds suffused cream and pale sulphur. Panicles extra large, long and cone-shaped. This Lilac is as large and as fine as Miss Ellen Willmott, but is a different type of flower. Ellen Willmott is more compact and perfect in form while the panicle of Edith Cavell is a trifle more open and more lace-like in effect. The individual florets are a trifle larger than those of Ellen Willmott, but every large collection should have both of these fine varieties.

2 to 3 ft., \$3.50; 3 to 4 ft., \$4.00

GEHEIMRAT SINGLEMARK. Single. A very deep blue-purple. This is a very dark Lilac. The long upright panicles are made up of many small lobes that add to the attractiveness of the flower. The plant is tall and upright growing. A good variety.

2 to 3 ft., \$1.25; 3 to 4 ft., \$1.50



Special

Anniversary Offers

**of BRAND'S
OWN ROOT
French Lilacs**

On this page we are offering 4 most excellent collections of "Own Root" French Lilacs. Each collection is made up of outstanding varieties in different colors. Each plant will be labeled and we feel sure that every variety that we are offering will please the purchaser. Complete descriptions may be found in our general list.

OFFER No. 1

Decaisne. Single blue.

Katherine Havemeyer. Double mauve-pink.

Miss Ellen Willmott. Double white.

President Loubet. Double red.

Regular Value in 2- to 3-ft. grade \$13.50, for \$ 9.50

Regular Value in 3- to 4-ft. grade \$17.00, for \$12.00

OFFER No. 2

Buffon. Single pure pink.

Charles Joly. Double deep red.

Condorcet. Semi-double blue.

Thunberg. Double reddish violet-mauve.

Vestale. Single white.

Regular Value in 2- to 3-ft. grade \$10.50, for \$6.50

Regular Value in 3- to 4- ft. grade \$13.50, for \$9.50

OFFER No. 3

Jacques Calot. Single pink.

Mme. Casimir Perier. Double white.

President Grevy. Double blue.

Volcan. Single wine-red.

Waldeck-Rousseau. Double reddish pink.

Regular Value in 2- to 3-ft. grade \$10.50, for \$ 6.50

Regular Value in 3- to 4-ft. grade \$14.50, for \$10.00

OFFER No. 4

Alphonse LaVallee. Double blue.

Belle de Nancy. Double pink.

Charles X. Single light red.

Mme. Lemoine. Double white.

President Viger. Double pink-mauve.

Regular Value in 2- to 3-ft. grade \$ 8.00, for \$5.00

Regular Value in 3- to 4-ft. grade \$10.00, for \$7.00



Charles Joly (Double)

Purple-red. One of the Very Best of the Double Dark Reds



GEORGES BELLAIR. We purchased direct from France some ten years ago a variety labeled Georges Bellair. We soon discovered this variety was not true to name, but we propagated and sent it out to our customers as Georges Bellair, but stated in our catalog that it was not the true variety. However, we always considered this variety as one of our favorite double pinks. This season we spent much time in checking on the trueness of two or three varieties that are listed in different catalogs under various names. In so doing we discovered that the variety we have been listing as Georges Bellair is Mme. Antoine Buchner, and we will drop the name Georges Bellair.

Note: Anyone who has ordered a Mme. Antoine Buchner from us in the past did not receive the true variety, and if they are not satisfied with the variety we sent them, we shall be very glad indeed to send them a true one this fall.

HENRI MARTIN. Double. Extremely long, graceful panicles. During the blooming season these panicles averaged 12 inches in length and some went over 13 inches. The color is a beautiful blue-lavender with distinct touches of pink. Our show plants of Henri Martin are right by the path as we go from the office to the trial fields beyond. We pass it many times a day when it is in bloom, and we always stop and marvel at its beauty. We are sure that all good judges of Lilacs would include it among the best twenty.

2 to 3 ft., \$3.00; 3 to 4 ft., \$4.00; 4 to 5 ft., \$5.00

HIPPOLYTE MARINGER. Double. A pinkish lavender-lilac of tremendous size. In fact, this is the largest of all Lilacs. In cool cloudy weather this variety takes on deep tones of violet. The double florets as they open take on a fluffy effect which gives to the great panicles a peculiarly lovely appearance. This is generally the largest of all the Lilacs.

2 to 3 ft., \$2.50; 3 to 4 ft., \$3.50; 4 to 5 ft., \$5.00

JAN VAN TOL. Single. An extremely fine new single white. Panicles of most beautiful form composed of the largest single florets to be found in a single white; very sweet scented. The longer we grow this Lilac the more we like it. It must become thoroughly established before it begins to show its true qualities.

2 to 3 ft., \$2.50; 3 to 4 ft., \$3.50

JEAN MACE. Double. Bluish mauve. Very pretty Lilac. A tremendous bloomer. Immense full panicles. It just seems as though there couldn't be another floret crowded in. Very thrifty bush that grows erect and shapely, and is very ornamental even after the blooms are gone.

2 to 3 ft., \$2.00; 3 to 4 ft., \$2.50; 4 to 5 ft., \$3.50

KATHERINE HAVEMEYER. Double. This Lilac has now bloomed for us for over 15 years and every year since it started to bloom we have been more and more impressed with it. It is one of our most dependable varieties. The panicles are very large, very double, and very profuse on the bush. Our 3- to 4-ft. bushes in the field all had from 3 to 6 big panicles on them right in the nursery row this season and one 4-ft. bush had 17 large and 2 smaller blooms. It goes into almost every order we sell during the blooming season. The coloring is very rich, a blending of pink, deep rose, and red-purple. The bush is very thrifty.

2 to 3 ft., \$3.50; 3 to 4 ft., \$4.00; 4 to 5 ft., \$5.00

LAMARTINE. Single. Earliest of all to bloom. Tall bush, bearing large, open panicles of delicate mauve-pink. Single florets very large.

2 to 3 ft., \$1.50; 3 to 4 ft., \$2.00; 4 to 5 ft., \$3.50

LEON GAMBETTA. Double. Panicles of the greatest size. Buds and reverse of petals very pink, which gives the flower a general pink effect. Deep pink buds open into very double little roselike florets of the daintiest pink and lavender. This is one of our very very choicest Lilacs and we cannot propagate in sufficient quantity to always list it. This fall our stock is very limited as we do not have over 25 plants to offer.

2 to 3 ft., strong, \$5.00

MISS ELLEN WILLMOTT. Double. A large bush with very stout limbs and large, thick, light green leaves. The flowers come in immense panicles of creamy white, made up of double florets almost twice the size of those of any other double white. In our estimation this is the greatest double white Lilac and one of the three or four finest of all Lilacs.

2 to 3 ft., \$3.00; 3 to 4 ft., \$4.00; 4 to 5 ft., \$5.00

MME. ABEL CHATENAY. Double. Beautiful, great, round, globe-shaped buds like Lily-of-the-Valley, which open very slowly into very large blooms of pure white. A sort very much admired.

2 to 3 ft., \$1.50; 3 to 4 ft., \$2.00

MME. ANTOINE BUCHNER. Semi-double. Of all of the truly pink varieties we grow we classify this as the best. This variety we purchased originally under the name of Georges Bellair and have listed it as such until this year when we discovered its true name. We have always regarded it as one of our very best Lilacs. It is a late tall-growing variety with long shapely open trusses. When seen in the bud it is a decided deep pink, but as the florets open they are white heavily overlaid with intense rosy pink.

2 to 3 ft., \$2.00; 3 to 4 ft., \$3.00; 4 to 5 ft., \$5.00

MME. LEMOINE. Double. One of the best of the old-time double whites. The panicles are large, long, erect, with large pure white individual florets.

2 to 3 ft., \$1.25

MME. LEON SIMON. Double. Strong foliaged and strong, upright growing plant. Panicles long, beautifully formed and held well up. Buds swell very large before they open and are a deep reddish pink on the reverse side. Florets open like little Roses of a deep bluish lavender.

2 to 3 ft., \$1.50; 3 to 4 ft., \$2.50; 4 to 5 ft., \$3.50



MRS. EDWARD HARDING. Double. Large blooms filled with large oddly curved florets of a claret color intermixed with pink. This Lilac does not impress one until the bush acquires some age when it becomes a superb variety. Its color is so different and pleasing as to make it very desirable. 3 to 4 ft., \$3.50; 4 to 5 ft., \$5.00

OLIVIER DE SERRES. Double. A clear, clean, uniform light blue. The bush is tall and a good grower. The large double florets are packed closely on the stems. Panicles are very large and the general effect of the plant when in full bloom is simply amazing. Like all of these Lilacs one does not see this variety at its very best until the plant is from 8 to 10 years of age. We class it as a Lilac of the very highest quality. 3 to 4 ft., \$4.00; 4 to 5 ft., \$5.00

PASCAL. Single. Early. Very large, tall, thrifty bush which is a sight to behold when covered with its great open, lacy, plumelike panicles which are a delicate pinkish lavender. 4 to 5 ft., \$2.00; 5 to 6 ft., \$3.00

PRESIDENT FALLIERES. Double. A tall, upright growing Lilac that is very much admired. Panicles rather open, nicely cone-shaped, buds very pink as they open with the floret retaining much of the pink after opening. Center of floret white bordered pink. A very bright clear pink. 2 to 3 ft., \$3.00; 3 to 4 ft., \$4.00

PRESIDENT GREVY. Double. Light blue. Immense panicles; very double and symmetrical. A clear, soft, delicate blue—President Grevy is one of the older sorts and still one of the most desirable. 2 to 3 ft., \$1.50; 3 to 4 ft., \$2.00

PRESIDENT LOUBET. Double. Red. One of the very choicest. Medium height plant. Panicles appear rather small just as the florets begin to open but they slowly develop as the florets continue to open until they become immense. A bright red in the bud stage, but showing considerable white on the inner edge of the opened petal. 2 to 3 ft., \$3.00; 3 to 4 ft., \$4.00

PRESIDENT POINCAIRE. Double. Very thrifty plant; grows into a large, heavy-limbed bush. Panicles large to very large, globular, made up of many lobes. Petals very large, purplish red on outside, turning to lavender-blue as they open. An immense and impressive bloom. 2 to 3 ft., \$3.00; 3 to 4 ft., \$4.00

PRESIDENT VIGER. Double. A tall, upright, shapely growing Lilac with long, rather narrow cone-shaped panicles held erect on the bush. Color purple tipped deep pink in the bud fading to a soft mauve. 2 to 3 ft., \$2.00; 3 to 4 ft., \$2.50; 4 to 5 ft., \$5.00

RENE JARRY-DESLOGES. Double. Shrub grows to medium height and is covered with medium sized blooms of a rich Lobelia-blue touched with mauve. This is one of the fine deep blue Lilacs where the color is very rich. 2 to 3 ft., \$3.00; 3 to 4 ft., \$4.00

REAUMUR. Single. A remarkable Lilac, a flower the beauty of which grows upon you. The flowers appear of the greatest size as the truss is made up of several smaller ones all worked together so as to appear as one great bloom. Color a subdued rose-red. It keeps its color a long time and is a superb Lilac. Very choice. 2 to 3 ft., \$3.00; 3 to 4 ft., \$5.00

RUHM VON HORSTENSTEIN. Single. A Lilac that produces blooms of the greatest size even on small bushes set out but two years. It is an even toned light red-purple. One of those self colors everyone likes. People marvel at the immense blooms of this variety on bushes not more than 4 feet high. A Lilac from Holland. 2 to 3 ft., \$2.00; 3 to 4 ft., \$2.50

SENATOR VOLLAND. Double. Very floriferous. A very pretty Lilac with a large bloom that is somewhat open. When in the bud the reverse of the petals shows a very distinct bright touch of pink which continues to show as the florets open and gives a very dainty effect. Center of florets pinkish light lilac. 2-3 ft., \$1.50; 3-4 ft., \$2.50; 4-5 ft., \$3.50

SOUV. DE LUDWIG SPAETH. Single. Red. Although one of the oldest of the improved Lilacs still it is one of the very best Lilacs grown. It seems impossible to get a red that has so many good, and so few bad qualities as Ludwig Spaeth. Panicles long and held erect well out from the foliage. A brilliant intense rich purple-red, that holds up well in the sun and lasts a long time. Bush large, very profuse bloomer. 2 to 3 ft., \$1.50; 3 to 4 ft., \$2.00

STATZGARTNER ROTHPLEZ. Double. An upright growing shrub with long, cone-shaped panicles. A rich red-purple. Until recently Charles Joly has been our only good double red. We have in Statzgartner Rothplez another fine red, giving bloom later than Charles Joly. 2-3 ft., \$2.50; 3-4 ft., \$3.00; 4-5 ft., \$5.00

THUNBERG. Double. Very large, long, slender spikes, generally two to the panicle. Buds and reverse of florets a violet-mauve with a reddish appearance from a distance. Florets are large; open a light lilac, twisting and turning as they open, so that the color of the bud is intermingled with that of the inside of the petals, making a very striking Lilac. 3 to 4 ft., \$2.00; 4 to 5 ft., \$3.00

VICTOR LEMOINE. Double. This is about the most wonderful of all the French Lilacs. It is no wonder that Victor Lemoine, the originator, gave to it his own name. We class it as one of the three or four very best if not the best. Florets are very double like little double Roses. These are gathered into panicles of the largest size, and the color effect is simply indescribable. The general effect is a soft rosy pink overlaid with a delicate blue-lavender. This is also one of the very latest to bloom. 2 to 3 ft., \$3.50; 3 to 4 ft., \$5.00; 5 to 6 ft., \$7.50

VILLOSA. Another excellent Lilac for large and small plantings. Grows into a large shrub, 10 feet high, with large, heavy, waxy leaves. Come into bloom when all other Lilacs are gone. Panicles large, broad, plumelike, a delicate pink color. 2 to 3 ft., \$1.25; 3 to 4 ft., \$1.50

VIOLETTA. Semi-double. A very dark Lilac of true violet-red. The individual florets look exactly like a Violet and are unusually large. This season a group viewing this variety were interested in finding out just how large these florets were. We found that there were florets that a half dollar just covered. One of the choicest of all Lilacs. 2 to 3 ft., \$3.00; 3 to 4 ft., \$5.00

VOLCAN. Single. As near a true deep red as we have. Panicles which are very long, large, and shapely, come up well above the foliage. These panicles look rather open as they are in the bud stage but as they develop they open into one of the finest, most shapely, and attractive of all the red Lilacs. It is the latest of all the red-purples. 2 to 3 ft., \$1.50; 3 to 4 ft., \$2.00; 4 to 5 ft., \$3.00

WALDECK-ROUSSEAU. Double. Here is a Lilac that we have never done justice by in our descriptions. It is essentially a landscape variety, one that is of tremendous value for its effect as one stands from 50 to 75 feet from the bush. Viewed thus with the sun shining it is a marvelous Lilac. The panicles are open and of a light rose color. The buds are a deep rose-pink with the floret opening with a white center. The striking contrast of deep pink and white is very pleasing. 2 to 3 ft., \$2.50; 3 to 4 ft., \$3.50

WILLIAM ROBINSON. Double. Invariably well liked; always chosen as one of the best. Very compact panicles, almost round. When florets are about to open, the bloom gives a very striking pinkish red effect which gives place to a lavender as the florets fully open and their reverse side turns back. Very much admired. 2 to 3 ft., \$1.50; 3 to 4 ft., \$2.00

Philadelphus Virginal



Finest of the Philadelphus

Semi-double. White. Everblooming. Everything considered this is the most sensational of all the Philadelphus. In fact, we regard it the most valuable acquisition to the flower garden of recent years. The bush is a moderately strong grower, with us attaining a height of 6 to 7 feet. Rather open, sparse foliage to make the wonderful blooms all the more conspicuous. Flowers pure white, semi-double, often 2 inches in diameter. Begins to bloom about June 15th with us, and blooms profusely for about 3 weeks. Then it rests a few weeks and starts to bloom again, continuing with a small amount of bloom until frost.

2 to 3 1/2 ft., 75c; 2 for \$1.40; 10 for \$6.00.

3 to 4 ft., \$1.00; 2 for \$1.80; 10 for \$8.00.

THE FINEST NEW SHRUB BROUGHT OUT IN THE PAST 50 YEARS

Our Balanced Collection

EACH A MASTERPIECE



We are often asked to make up a balanced collection of a dozen or more of the very finest varieties of Lilacs, covering a wide color range. We are listing a collection here for the benefit of those who do not know varieties, and who do not have an opportunity to visit large plantings of Lilacs when they are in bloom.

We are including in our list only those varieties that we have to offer this fall. We are growing other choice kinds and when we have them in sufficient quantity to offer, they will be added to our list.

Each of the following varieties is a masterpiece.

Congo
Decaisne
Edith Cavell
Henri Martin
Hippolyte Maringer
Katherine Havemeyer
Leon Gambetta
Miss Ellen Willmott

Mme. Antoine Buchner
Olivier de Serres
Pres. Loubet
Reaumur
Rene Jarry-Desloges
Statzgartner Rothplez
Victor Lemoine
Violetta

TEN LILACS

Your Selection From Above Varieties

All 3 to 4 feet **\$35**





Choice Tulips

If you wish the very best Tulips, Tulips very large in size and on long, stiff stems, you must plant only top size bulbs. The bulbs should be planted 6 inches deep in the late fall. The next spring the Tulips will come on at their best. The second season they will not be as good as the first, and the third season the blooms will be inferior to the second. At the end of the third season's blooming it is always best to dig the bed up, get new bulbs in the fall, and start all over again with new Holland-grown bulbs.

WE HANDLE ONLY HOLLAND-GROWN BULBS AND ONLY TOP-SIZE BULBS

DARWIN TULIPS

Darwin Tulips are distinguished by their lovely shades, in the full range of colors, and their large, cup-shaped flowers of heavy substance, held erect on tall, strong stems. They run in height from 24 to 30 or more inches, and are our most popular Tulip.

Prices for all Tulips, unless otherwise priced: 65c per doz.; \$4.75 per 100.



Clara Butt

AFTERGLOW. A rich rosy orange with salmon tint at the edges. Very bright and cheery. 28 inches.

APHRODITE. A clear silver with edges of soft buff. Enormous blooms on tall stiff stems. A beautiful shade. 32 inches.

BARONNE DE LA TONNAYE. A beautiful rose with pink edges. A very much liked variety. 30 inches.

BARTIGON. Rich crimson. An exceedingly popular sort. Also much used for forcing under glass. 26 inches.

BLEU AIMABLE. Heliotrope-blue, with a white base, dark violet inside. A large, choice flower. We like it very much. 26 inches.

CLARA BUTT. A true clear pink, washed with salmon-rose. 24 inches.

FARNCOMBE SANDERS. Rich rosy scarlet. Flowers of fine form and large size, tall strong stems. Most popular scarlet Tulip. 32 inches.

FAUST. A shining maroon-black. Enormous flowers on great strong, tall stems. Finest of all purple-blacks. 30 inches.

GRETCHEN. A very delicate pink, almost white. Edges touched with slight flush of red as flower ages.

LA TULIPE NOIRE. Velvety maroon-black. The black Tulip. Very fine to plant as a contrast to the other colors. 28 inches.

MEROTE. A very fine pure white. A new white of exceptionally pleasing appearance and very attractive.

NIOBE. A beautiful large bronze, flushed orange. About the best to be found in this pleasing combination of colors.

ORANGE AND LEMONS. A delightful blending of orange and lemon-yellow which makes a most pleasing effect.

PRESIDENT TAFT. A deep blood-red, suffused with darker tones, with rich vermilion high lights at the petal edges. An extra choice Tulip. 28 inches.

REMEMBER! These prices mean real top size bulbs. Such bulbs cannot be sold at the price some charge for medium size bulbs. A top size is a grade larger than a No. 1 grade.



Bartigon

PRIDE OF HAARLEM. Deep old rose. A big cup-shaped flower of heavy substance on tall sturdy stems. One of the most in demand. 32 inches.

PRINCESS ELIZABETH. A fine toned clear pink with rose tints. A large flower and very effective. 28 inches.

REV. H. EW BANK. Light mauve-blue or heliotrope. A medium sized flower that looks pretty alone, in mass or with other colors. 25 inches.

SYLVIA. A large fine rose. One of the new ones in this color. Much thought of in Holland.

VENUS. A large, pure silvery rose, white base marked with a pale blue ring; very lovely color; finest form and substance. 28 inches.

WHITE QUEEN. White, faintly washed French gray. Very pretty appearing flower. 26 inches.

WM. COPELAND. (Same as Sweet Lavender.) Lilac-mauve. Great for early forcing indoors. A beautiful wide opened flower. 28 inches.



Rev. H. Ewbank

Darwin Rainbow Mixture

A splendid mixture made up of only first class varieties. Mostly of the varieties quoted above. This mixture comes to you in large size bulbs only.

60c per doz.; \$4.50 per 100



NEW IDEAL DARWIN TULIPS

We are listing below 6 varieties of the newer Darwin Tulips which are now being sought after by those who know what is the very best in Tulips. Tall stout stems, great large flowers, brilliant colors mark the new Tulips which are now obtainable to go into your gardens. These are a great improvement over the older list of Darwins. The flowers are larger and much more brilliant in color.

CITY OF HAARLEM. An immense cardinal-red, shading to scarlet at edge of petals. The large, blue base circled with pure white enhances the beauty of this fine red. It is one that you can depend upon.

GIANT. An extremely rich reddish purple, shaded dark violet with white base. A very large flower on a tall, stiff stem. 29 inches.

KING GEORGE V. A glowing salmon-scarlet, shaded bright rose; inside brilliant orange-scarlet, with blue base. Height 25 inches.

L'INNOCENCE. A splendid large, strong stemmed pure white. One of the newer and better whites much in demand. A very choice flower of beautiful appearance. This is the first time we have been able to offer this variety.

PRINCE OF THE NETHERLANDS. Intense fiery scarlet with glistening sheen of salmon-rose. The color effect is enhanced by a pure white rib through the center of each petal. Color is very vivid and shows up in a wonderful manner.

WM. ARCHER. We are constantly on the lookout for something better in the line of yellow Tulips and we believe our customers will be very much pleased with the beautiful shade and wonderful form of Wm. Archer, a pure, clear yellow.

PRICE OF THE ABOVE 6 NEW IMPROVED DARWIN TULIPS

85c per 12; \$6.50 per 100 in separate varieties or at the same price made up into a mixture of equal parts of each variety. We also carry Breeder and Cottage Tulips in specially made up mixtures of the very highest grade.



King George V

BREEDER TULIPS

The Breeder Tulips are like the Darwins in size, form, and time of blooming. But where the Darwins are generally solid soft colors, the Breeders go into the mixed and more brilliant colors in bronze, brown, mahogany, chestnut, orange, purple, violet, etc.

Breeder Rainbow Mixture

Because of the perfect blending of Breeder Tulips in their colors we recommend our Rainbow Mix which will give you soft shades of various colors.
75c per 12; \$6.00 per 100

COTTAGE TULIPS

The Cottage Tulips bloom with the Darwins and the Breeders, but they are gayer in color, more graceful in form, and not so tall as those kinds.

Cottage Rainbow Mixture

All Cottage Tulips in finest mixture. Superb varieties in a fine range of types and colors.
65c per 12; \$4.75 per 100



Cottage Tulip



Brand's Hardy Lilies

Lily bulbs should be planted in light sandy or loamy soil with an abundance of humus. For most varieties well-rotted cow manure or leaf mold should be added to soil before planting.

Each bulb should be placed in a pocket of clean sand. Most varieties should be planted five or six inches deep, although small bulbs and a somewhat heavy soil call for shallow planting. It should be remembered that perfect drainage and plenty of moisture are the chief essentials of success.

It is important to mulch Lily bulbs in the fall with well-rotted manure, straw, or marsh hay. This is not usually necessary as a protection against extreme cold; but the continual thawing and freezing of winter tears the roots of unprotected bulbs from the soil, often heaving the bulb above ground, and the first warm, sunny days bring tender shoots above ground before danger of frost is over.

Lilies, unlike most garden flowers, are more effective if planted in small groups scattered through the border than in large masses. Also they will do better and be more effective if planted in connection with slender growing plants, such as small shrubs, ferns, and herbaceous plants. These will protect the stems of the Lilies and also make an attractive setting for the Lily blooms.

CONCOLOR. A beautiful small new star-shaped Lily that is very hardy. The blooms are of a bright reddish orange color and about the same size as those of Tenuifolium. The blossoms stand erect while those of Tenuifolium hang down. A dainty new Lily very much used in rock gardens.

Each 30c; 3 for 70c; 12 for \$2.50

ELEGANS ATROSANGUINEUM. This Lily belongs to the same class as the Umbellatum. The flowers are a rich dark coppery crimson with purple-black spots at base of petals.

Each 25c; 3 for 60c; 12 for \$2.25

REGALE (The Regal Lily). The hardiest of all the really fine Lilies. The most sensational Lily added to our gardens in many years. Can be grown practically anywhere in the United States in well-drained soil. White, streaked with a delightful coral-pink on the outside petals. Throat heavily touched with gold. Perfume exquisite. Size of bulb means circumference.

3 to 4 in., 10c; 6 for 55c; 12 for \$1.00

4 to 5 in., 15c; 6 for 75c; 12 for \$1.25

5 to 6 in., 20c; 6 for 90c; 12 for \$1.75

TENUIFOLIUM (The Coral Lily). A brilliant little midsummer Lily of a bright deep orange-red. It is effective in the flower border as well as the rock garden. The foliage is fernlike and the slender stems carry a number of pendent flowers.

Nice blooming size, 15c; 6 for 55c; 12 for \$1.00

Large size, each 20c; 3 for 55c; 12 for \$2.00

TENUIFOLIUM, GOLDEN GLEAM. This is a beautiful, robust, and a floriferous hybrid of the Coral Lily, Tenuifolium, which it resembles very much in form. In color, it is a pure apricot-yellow. June flowering.

Each, 35c; 3 for \$1.00; 12 for \$3.75

Regal Lily



Tigrinum

TIGER (Double). A handsome Lily of easy culture. Produces great quantities of large, showy, brilliantly colored flowers in August and September. Develops bold branching heads, each often carrying 20 large, rich, orange-scarlet flowers, spotted crimson-brown. This is the double type of the old Tiger Lily and is much prettier than the single. The hardiest Lily grown. Never dies out.

Large bulbs, each 25c; 3 for 70c; 12 for \$2.40

UMBELLATUM. A tall growing, absolutely hardy Lily about 3 feet tall, holds its large cup-shaped flowers erect. Flowers 3 to 4 inches across and often thirteen or more to the stalk. Dark orange-red. This variety, unlike the more delicate varieties, is more satisfactory if planted in a mass than if scattered in groups through the border. It works in well with a planting of deep blue Delphinium.

Large bulbs, each 40c; 3 for \$1.10; 12 for \$4.00

WILMOTTIAE. A beautiful vivid orange-red variety, with recurved petals spotted brown. The long stems which often reach a height of 48 inches carry from 15 to 20 flowers. It needs staking. Blooms during July and August.

Nice blooming size, each 40c; 3 for \$1.10; 12 for \$4.00

LILY OF THE VALLEY

Nice to plant in shady places under trees or about the house where the sun seldom reaches. Also very fine for the rockery. Take little room but are always there and furnish many little sprays of sweetly perfumed flowers. These clumps may be broken apart.

Clumps, 3 to 5 shoots, 3 for 75c; doz., \$3.00





Fall Blooming Asters

Plant these brilliant fall-blooming hardy Asters and prolong your blooming season a full month. Have your garden a place of dazzling splendor when all about is brown and sere. They will bring a world of color during late September, all of October, and on into November until heavy freezing kills the flowers. These plants stand our Minnesota winters unprotected.

These late blooming Asters should be in every garden as they give a mass of color after all other flowers are gone except the hardy outdoor Chrysanthemums.

There has been a wonderful improvement in these fall Asters of late years just as with many other flowers. As new varieties come that are better than the older sorts we test them out and offer our customers a constantly improving assortment. We want everyone who does not have them to try out one or more kinds this fall. Be sure to plant well and mulch the first winter.

The Tall and Medium Tall Varieties

ABENDROTHER. A medium tall growing Aster with large delicate lavender flowers with a very bright pink reflection. One of the best of the tall pinks.

Each, 35c; 3 for \$1.00; 6 for \$1.75; 12 for \$3.00

CHARLES WILSON. (New 1937.) Here is the new Aster wonder for 1937. An entirely different shade of red from Red Rover. Where that variety is a purple-red, Charles Wilson is a much brighter red with the purple eliminated. An intense brilliant red such as can be found in no other Aster. Truly a wonderful acquisition to our growing list of indispensable Asters.

Each, 75c; 3 for \$2.00; 6 for \$3.50

COL. F. R. DURHAM. A new Aster we are adding to our list this fall. Entire bush covered with double dark blue flowers. A healthy grower; long flowering period. About the finest blue we have seen.

Each, 75c; 3 for \$2.00; 6 for \$3.50

MOUNT EVEREST. New. A wonderful white Aster and by far the finest and best white. It forms very tall, well-shaped, pointed pyramids with an abundance of lateral growths, which flower right down to the ground. Flowers large and dead white with a very small eye. Florets are as large as those of Climax and it is a fitting white companion for that wonderful blue variety. Clean, healthy foliage. Makes wonderful bouquets as cut flowers.

Each, 50c; 3 for \$1.25; 6 for \$2.00; 12 for \$3.75



St. Egwin

RED ROVER. New novelty. One of the sensations of our garden last fall. We had a row of this wonderful Aster last October about 100 feet in length and when in bloom this was a sight to behold. The entire row was one solid mass of color so bright that it arrested every eye. A rich deep red-purple. Our first good red Aster.

Each, 50c; 3 for \$1.25; 6 for \$2.00; 12 for \$3.75

ST. EGWIN. This is the finest so far as we have seen of all the pink Asters. The plant is dwarf, seldom over 18 inches; comes up from the ground often as a single stem which sends out many short, strong branches in all directions, forming a perfect dome which is literally smothered in a world of bright deep pink blooms. Often a single branch can be cut with over 500 blossoms on it.

Each, 35c; 3 for \$1.00; 6 for \$1.75; 12 for \$3.00



Mauve Cushion

Dwarf Fall Blooming Asters

We have tried out many of these dwarf fall-blooming Asters and so far we are most pleased with the two following varieties. They are the neatest and most attractive in appearance.

Both are about a foot in height and grow into very compact shapely little bushes just covered with flowers. Both lend themselves very nicely into use as small hedges along the edge of the border or as small individual clumps in the rock garden.

NANCY. Dwarf, bushy, very free blooming, the pale pink flowers literally cover the little 12-inch plants in late September.

VICTOR. The dwarfest of all and exceedingly pretty. Flowers are large and of a beautiful clear lavender-blue. An especially fine rock plant.

Either kind, 25c each; 5 for \$1.10; \$15.00 per 100

MAUVE CUSHION. An entirely distinct species from Japan. Forms a circular cushion-like plant often 2 feet across and not over 9 inches high. The flowers, which are a delicate soft mauve, measure 1 1/4 inches across and are produced in such profusion as to completely cover the plant. Season, October and November.

Aster Collection

One each of these six fine New Fall-Blooming Asters: Abendrothe, Chas. Wilson, Col. F. R. Durham, Mt. Everest, Red Rover, St. Egwin.

A REGULAR \$3.20
VALUE
FOR

\$2.50
Postpaid



Hardy Garden Phlox



R. P. Struthers Improved

A List of Very Select Standard Phlox

AFRICA. Brilliant carmine-red with deep blood-red eye. The large nicely formed florets are gathered into a large shapely truss of intense richness.

BEACON. A bright cherry-red with strong tall stems. A very distinct and pleasing color.

B. COMTE. One of the richest of all the dark colored Phlox. A rich satiny deep red-purple.

BETTY LOU. Bright orange-scarlet with claret center; medium height, with many lateral branches, affording a long season of bloom.

BRIDESMAID. A medium tall very strong growing Phlox producing great nicely shaped panicles. A good white with a large well defined rose-crimson eye.

CAROLINE VANDENBERG. Lavender bloom; the nearest to a blue of all Phlox. Large individual flowers. Splendid variety.

CHAMPS ELYSEE. A very pleasing deep velvety purple, so deep as to have a blue effect.

COMUS. A splendid blooming Phlox of medium height that is literally covered all summer with bloom. A deep bright uniform rose.

COQUELICOT. One of the brightest of all Phlox. An intensely bright, almost scarlet, red. Medium height.

COUNT ZEPPELIN. A tall, nicely formed plant. Large white with a vermilion-red eye. A very neat clean-looking variety. Very different from Bridesmaid in appearance.

DR. CHARLES MAYO. Another Phlox somewhat after the type of Bridesmaid and Count Zeppelin and yet entirely distinct. A very strong grower.

ENCHANTRESS. A bright salmon-pink with darker eye. Resembles Elizabeth Campbell very much in color, but is a much stronger plant.

FEUERBRAND. A splendid red Phlox. Good plant and a very profuse bloomer. Very bright dark red-crimson. One of the most brilliant of all reds.

No garden is complete without perennial Phlox. The color range is so large, the colors so bright, and the period of blooming so long that every garden should contain a good planting.

Plants begin to bloom in late June, and with proper treatment continuous bloom may be expected until frost comes.

Water heavily during dry spells. The flowers should not be allowed to go to seed. Cut the first flower spikes when they are in full bloom and use for home decoration. Or, if left longer on the plant, they should be cut as soon as the blooms fade. In this way a second setting of bloom will come on and thus the season will be prolonged.

This plant likes a well-enriched soil and a sunny well-drained location. Fall planting can be made from the first of September until the ground freezes. Phlox can also be planted in the spring.

Plant so that the crown is just beneath the surface and use plenty of water when planting if the ground is at all dry. If the soil is dry as winter approaches, stir the ground well about the plants and cover with a good mulch.

OUR LIST

Our list of standard Phlox is made up of sorts we have treated for many years and have chosen the very best of the larger number of older varieties that are offered for sale.

We add also a short list of what we consider the most desirable of the newer varieties.

Prices for Standard Varieties of 1-yr. field-grown stock: 1 Phlox, 35c; 3 of different varieties for 75c; 6 all different varieties for \$1.35; any 12 for \$2.25.

NOTE: We prepay all orders for Phlox amounting to \$2.00 or more. Allow 25 cents extra on small orders.

Many people like to plant their Phlox in groups of three or more of a kind. Some prefer entire beds made up of one kind. If you wish to plant one sort, we offer the following prices:

3 Phlox 1 kind, 65c; 6 Phlox 1 kind, \$1.25; 12 Phlox 1 kind, \$2.15.



Widar

Phlox for Mass Planting

We have grown four good kinds for the above purposes and offer them at the following prices:

25 of any one kind \$ 4.25, postpaid

100 of any one kind 15.00, postpaid

B. COMTE. Red.

DR. CHARLES MAYO. White, carmine eye.

MRS. MILLY VAN HOBOKEN. Deep pink.

R. P. STRUTHERS IMPROVED. Light red.



FRAU ANTON BUCHNER. A tall plant. Very rich looking superbly formed flower of pure creamy white. Florets are of great size and beautiful in form.

FRAU VON LASSBURG. A pure white of medium height. Late mid-season. Splendid bloomer of very large flowers.

H O. WIJERS. A pure glistening white with large trusses made up of large florets with a distinct bright red eye.

INNOCENCE. A pure glistening white. A strong robust-growing variety and a profuse bloomer. Does not have the creamy tint of Frau Anton Buchner.

JULES SANDEAU. A Phlox of dwarf habit which produces blooms of the greatest size in a beautiful clear medium pink. A Phlox that is unusually free from disease and in constant bloom all season.

LOTHAIR. A strong thrifty growing variety. Tall and holds itself strongly upright. Covered with great blooms of scarlet-red.

MISS LINGARD. This is an entirely different Phlox from the rest of this list except Miss Verboom. It has beautiful long shiny green foliage that looks as if waxed, and is free from disease. It is a pure white coming a month earlier than the other varieties listed. It is much used for cutting.

MISS VERBOOM. What has been said of Miss Lingard is also true of this variety except as to color. This is a rose-colored Miss Lingard.

MRS. JENKINS. One of the old dependable pure whites. Early, blooms of good size and most attractive form. A splendid bloomer.

MRS. MILLY VON HOBOKEN. A truly great variety. One of those kinds that will stand lots of grief and still survive. A tall robust plant producing freely great blooms of a deep pink with a much deeper pink center.

MRS. SCHOLTEN. A dark salmon-pink producing very large flowers. One of the most striking varieties in our whole collection.

ORCHID-ROSE. As the name implies, this is a fine orchid-pink.

R. P. STRUTHERS IMPROVED. A great Phlox in a deep shade of rose that will stand right up in the most intense sun without burning. Very desirable because of this.

SIEBOLD. Strong, robust, large rich salmon-pink.

SIR EDWIN LANDSEER. An intense light crimson or light, bright red that is about as profuse a bloomer as can be found in Phlox.

SPECIAL FRENCH. A beautiful even light pink in a very delicate shade. Probably the best very light pink.

THOR. An old dependable variety that always gives satisfaction. Grows to medium height. Throws up lots of strong stems which are always covered with great, nicely shaped trusses in pleasing salmon-pink.

VON HOCHBERG. A brilliant red that is hard to beat. A tall, easy to grow variety that is one of the very best of the real dark reds.

WIDAR. Large violet-blue florets with a large clear white eye. Medium height and of strong growing habit.



Von Hochberg



Enchantress

Brand's
Dependable Phlox
Collection

The small garden cannot accommodate a great number of varieties. Consequently every one should be a dependable one. From our long experience in growing many kinds, we consider the following as hardy and on the whole as satisfactory as any 6 Phlox that we have tried out.

B. COMTE. Brilliant carmine-red.

H. O. WIJERS. A fine white with a large red center.

MRS. MILLY VON HOBOKEN. A large light pink with a darker eye.

MRS. JENKINS. A fine early pure white.

R. P. STRUTHERS IMPROVED. A light rosy red with a darker eye.

SIEBOLD. A brilliant orange-red with a scarlet-red eye.

Special Offer

One each of the above 6 kinds for \$1.20, postpaid.

Special Offer

If you wish to plant in groups of 3, we offer 3 each of the 6 dependable kinds for \$3.25, postpaid.



Some New Phlox

COLUMBIA. A new Phlox introduced in 1935 that has created a sensation because of its wonderful beauty. A flower of great size in a beautiful cameo-pink with a very light blue eye. Fifteen immense blooms have been counted on a 2-year plant. Sold under U. S. Plant Patent No. 118.

DAILY SKETCH. It is the most distinct new Phlox we have seen in many years. The plant is tall, the individual flower very large. The color is a light salmon-pink with a very large and very noticeable carmine eye. Surely an outstanding new variety.

GENERAL PETAIN. Old rose florets with a deep red eye build up an immense dome-shaped truss that is indeed very beautiful. This is distinctive, as it is the only Phlox that can be given this color description.

GEORGE STIPP. Deep glowing salmon-pink; an outstanding variety in this color. Strong grower and excellent foliage.

HAUPTMANN KOEHL. Dark blood-red. Very large clusters on strong, tall stems. Florets very large. Keeps its color long in heat, winds, and rain.

H. B. MAY. Very large heads made up of very large individual florets of a bright clear pure rose-pink. A most pleasing shade.

LEO SCHLAGETER. This new variety is one of the most vivid fiery reds of all Phlox. Its color is intensified by a tinge of orange in the red which enhances its richness. It is about three feet tall with splendid growing habits.

LILLIAN. Here is another outstanding new Phlox for the year. It is a strong, robust grower and will stand up under conditions where many Phlox will not. We ran across it for the first time last year and couldn't resist adding it to our collection. It is very charming in

color combination. One of those rich salmon-pinks with a pretty bluish eye, just enough to make it unusually desirable.

MORGENROOD. A real novelty. Large trusses of bright rose with a deeper reddish eye. A strong grower with very large individual florets.

NORDLICHT. A tall, strong growing plant which holds its foliage nice and green throughout the heat. The color is a deep carmine-pink lit up by a large brilliant red center. The flowers stand the most intense heat without fading. The variety is late and distinct from all other Phlox.

PAINTED LADY. This is, indeed, a very striking variety. At a distance it seems to be a beautiful uniform self rich pink, but as you come closer to the flower you will notice a very small, sharply defined rich red center. No other Phlox like it.

ROKOKO. A clear uniform bright pink. A beautiful self color. Large individual florets, immense round trusses. Very strong grower. Beautiful new color in Phlox.

ROSENKAVALIER. Very large trusses of a beautiful rose-red. Strong stems and fine rich green foliage. Mildew resistant. Does not fade. Should be in every order.

TIGRESS. The outstanding Phlox novelty. Vigorous, upright growing, with immense trusses of brilliant orange-scarlet flowers. The trusses are huge pyramids which are built up by long-branched laterals, giving an unusually long period of bloom. These immense trusses of brilliant orange-scarlet have long been sought for by all Phlox enthusiasts, and are now available on upright, vigorous plants. The Phlox lover's dream of yesterday becomes a reality today.

PRICES FOR ALL THE ABOVE NEW PHLOX
50c each; any 3 for \$1.35; any 12 for \$4.00.

Brand's 70th Anniversary Collection of all First-Class PHLOX

**10 FINE PHLOX
for only \$1.95**
Postpaid

Ten different shades and colors—
no two alike.

Caquelicot. Brilliant scarlet-red.

Dr. Chas. Maya. White with claret
eye.

Enchantress. Delicate light rose-
pink.

Frau Anton Buchner. Rich, pure
creamy white.

Mrs. Milly Van Haboken. Deep
pink, deeper eye.

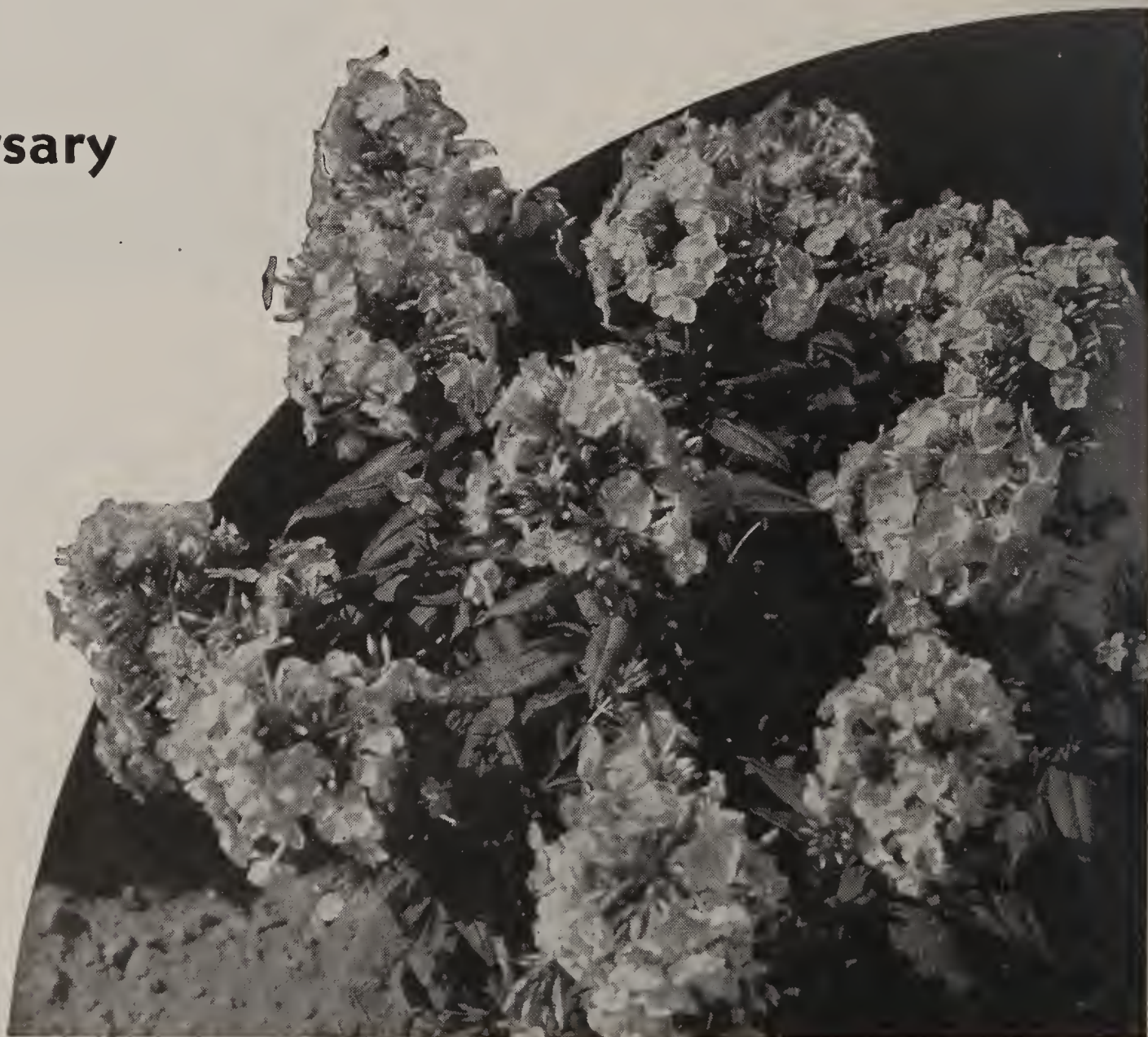
Orchid Rase. Large, deep orchid-
pink.

Painted Lady. Pure pink, red eye.

R. P. Struthers Imp. A pleasing
light red.

Von Hachberg. Rich deep crimson-
red.

Widar. Lavender-blue, white eye.





Phlox Subulata

Moss or Creeping Phlox

These dwarf creeping Phloxes are some of the first flowers to brighten the landscape in the spring. Because of their low growth, spreading habits, and vivid colors, they are especially fine for rock garden work. They are used extensively to put into terrace plantings, where dotted in among other plants, they are exceedingly bright and effective. Extensively used for planting about the base of the stone in cemetery work. Height, 4 to 6 inches.

ATROPURPUREA. This is the richest and most brilliant of all of this type of Phlox. The color is a deep carmine-red. This variety is used for cemetery planting. The long rows of Atropurpurea in our fields at this time (May 20th) are attracting travelers from a distant highway who come to see what these red streaks appearing so early could be.

ALBA. Absolutely pure white. The plant has a tendency to grow into a perfectly round little plant from 1 foot to 18 inches in diameter and when in bloom it is just one solid mass of pure white.

LILACINA. A very strong growing creeping variety that forms a solid carpet with its rich light green glossy foliage. Completely covered with delicate lavender flowers, with a circle of little dark blue dots at the base of the petals. Foliage remains lovely all winter under the snow.

MOERHEIM. Here is indeed a real acquisition to our list of new Phlox Subulata which we are building up. It is a very much enlarged and improved Rosea. The individual flowers are much larger, the petals bigger, the color richer, and the eye much more prominent. **50c each for division**

ROSEA. A deep uniform rose color, with a circle of minute carmine dots at the base of the petals. Forms a very compact uniform shaped plant and is very effective.

VIVID. A small blossom of the brightest imaginable clear pink with a very clearly defined small vivid deep red eye. This little Phlox is very choice and is especially desirable where a refined little plant is wanted. Probably the brightest of all Subulata varieties.

Any of the above kinds (except Moerheim), 25c each; \$2.25 per 12.



Phlox Subulata Atropurpurea

Special Phlox Subulata Offer

ONE DIVISION of each of the six
Subulata Phlox
postpaid for **\$1.50**

Five New Subulata Phlox

AUTUMN ROSE. A very compact growing plant with rather large individual flowers of an intense brilliant rose with a very rich red eye. Blooms freely again in September and continues all fall. **Each 35c.**

APPLE BLOSSOM. A very decided acquisition to our list of these attractive, low growing Phloxes. A pure delicate apple-blossom-pink with a clean cut deeper eye. **Each 35c.**

BRETONUI. A peculiarly formed little Phlox with the petals cut somewhat after the form of those of the star annual Phlox, which gives it a very delicate and attractive look. White with just a suggestion of lavender. **Each 35c.**

BLUE HILL. Here is truly a coming Phlox. The best and nearest blue we have ever seen in subulata Phlox. **Each 50c.**

EMERALD CUSHION. (New 1937.) A new subulata of real outstanding merit. Foliage rich emerald-green winter and summer; neat, compact habit; covered with lively, deep brilliant pink flowers which stand out in any group of pink Phloxes. **Each 50c.**

One each of the above 5 new Subulata Phlox, \$1.75, postpaid.

One each of the entire 11 Subulata Phlox \$3.00, postpaid.





Brand's Delphiniums

The Delphinium or Perennial Larkspur is one of the indispensable flowers to our flower gardens. No garden is quite finished without it, as it works into so many places. It starts blooming in June and continues throughout the season until frost, if, as soon as the first bloom falls, the old spike is cut off and the root well watered. New shoots will soon appear and the second crop of blooms will soon follow. The Delphinium should be planted in full sun in mellow soil, enriched with well-rotted manure. Water as soon as planted.

We will offer this fall two of the very best strains of Delphinium that can be purchased anywhere. Fine field run just as they come in the row, the best ones not picked out at 25c each; \$2.50 per doz., postpaid. From either of the following strains:

WREXHAM HOLLYHOCK STRAIN

We have a nice bed of plants for this fall's trade in this most wonderful strain from the finest seed we could procure in both England and America. Delphinium plants will go out at the proper planting season, and only select plants will go into our orders.

BLACKMORE and LANGDON

A beautiful strain of Delphinium from England. Our seed comes to us from England each year, and we have been very much pleased with the size and richness of the flowers.



Delphinium

Aquilegia or Columbine

The Aquilegias or Columbines are among the most elegant of the hardy perennial plants. They do fine in full sun, but are best suited to semi-shady locations. They are most commonly used in the long-spurred mixtures which cover a wide range of soft, delicate, distinct shades. Desirable planted in the long-spurred sorts where the separate colors are used to work out required color effects.

We have made quite a study of the Columbines of late years and have been to great pains to secure the seed from the very best strains as a foundation in our plantings.

We offer choice Columbine in the most sought after mixture.

MRS. SCOTT ELLIOTT (Long Spurred Hybrids)

One of the best known and most select of all the strains of Columbines. Very carefully selected for clear, even, soft color tones combined with very long graceful spurs. A wonderful, choice strain. Strong select 1-year plants, 25c each; \$2.50 per doz. Good 1-year plants, \$1.25 per doz, postpaid.

CRIMSON STAR. Beautiful brilliant red with white to light yellow throat. Long spurs, very striking. Large selected 2-year plants, 50c each; \$4.00 per doz. 1-year field-grown, 25c each; \$2.50 per doz., postpaid.



Aquilegia

Other Perennials

Unless specially priced, all Perennials: 25c each; 3 for 60c; 12 for \$2.25, postpaid.

ARMERIA Lauchena. A beautiful little plant for the rock garden. Its gray-green foliage holds close to the ground and above this on straight 6- to 8-inch stems appear many little round bright pink blossoms about an inch in diameter. It blooms all summer.

ASTER Subcaeruleus, Wartburg star. Splendid new Aster for border and rockery. Large lavender-blue flowers with yellow center. Blooms, carried on strong, straight stems, are fine for cutting. In bloom during Peony season.

BLEEDING HEART (Dicentra spectabilis). This is one of the old-time flowers from grandmother's garden, of which we will never tire. The flowers, which are pink with a white center and heart-shaped, come in long, graceful, drooping racemes. Foliage is fernlike and dainty. A valuable flower for planting in the shade. Very hardy and lives year after year. Grows 1 to 2 feet tall and blooms in May.
Large clumps, undivided, 50c; 6 for \$2.50
Nice large divisions, 25c; 6 for \$1.25

DAISY, Shasta Supreme. New. Earliest of all the Shasta Daisies. A real acquisition to our list of new things. Large beautiful flowers. Best Shasta at its time of blooming.

GAILLARDIA, The Dazzler. Flowers of great size. Intense golden yellow with a large maroon-red zone. An exceedingly fine Gaillardia.

GEUM, Mrs. Bradshaw. This still seems to be the most popular of all the Geums. A splendid variety, with large double flowers of a fiery orange-red. In bloom nearly all summer.

GYPSOPHILA, Bristal Fairy (Double Baby's Breath). Pure white, small, double flowers larger and more beautiful than the single variety. Extremely tasty for bouquet work.
Fine, strong grafted plants, 50c each.

GYPSOPHILA Paniculata. This is the single perennial Baby's Breath so much used to trim up bouquets of other flowers. Very fine for winter bouquets.

STATICE Latifolia (Sea Lavender). A great flower to dress bouquets with both summer and winter. Long stems, which are fine for cutting; branch out into great heads 18 inches across, made up of minute blue flowers.

SEDUM Spectabile, Brilliant. A sensational new Sedum. The plant has the appearance and habit of Spectabile but the flower is very different. Plant grows to a height of about 12 inches; each branch terminates in a great flat bloom 6 inches in diameter, made up of many little florets and of the most brilliant crimson. This should be in every garden. Should be planted in groups of about 3 plants.



Bleeding Heart (Dicentra Spectabilis)



Brand's Perennial Seeds All Flower Seeds are Postpaid

AQUILEGIA - Colubine	Pkt.
Coerulea (Rocky Mountain Blue) ..	\$0.15
Chrysantha. Long spurred golden yellow10
Crimson Star. Crimson and creamy yellow25
Mrs. Scott Elliatt. In finest mixture.	.25
ACHILLEA - Milfoil	
The Pearl. Small white double20
ANCHUSA Italica Dropmare. Blue10
Myasatidiflora. Rich blue. 10 inches.	.25
ARABIS Alpina (Rock Cress). Pure white10
ARMERIA Farmasa (Sea Pink). Pink.	.10
AUBRIETIA Deltoides (Rock Cress). Dwarf15
BAPTISIA (False Indigo). Blue Lupine-like flowers15
BELLIS Perennis (English Daisy). Finest mixtures10
CAMPANULA Carpatica (Harebell) ..	.10
Calycanthema (Cup and Saucer)10
Single Canterbury Bells. Finest mix.	.10
Double Canterbury Bells. Finest mix.	.10
Rotundifolia (Blue Bells of Scotland).	.25
CARNATIONS, Chabaud's Giant Double Mixed15
Grenadin. Hardest of all15
COREOPSIS Lanceolata Grandiflora10
Mayfield Giants. From Australia15
Double Yellow. Large, very showy ..	.15
HARDY CHRYSANTHEMUM (Shasta Daisy, Alaska)10
Conqueror. Large, pure white10
DIGITALIS, Shirley Hybrids (Foxglove)	.15
GAILLARDIA Grandiflora, The Dazzler.	
The King. New. Immense flowers ..	.15
Superba. Complete range of colors.	.15
GEUM, Lady Stratheden. Golden yellow.	.15
Mrs. Bradshaw. Intense scarlet15
GYPSOPHILA Paniculata (Baby's Breath)10
Repens Rasea. Low creeping pink.	.10
Repens Alba. Low creeping white ..	.10
HEUCHERA (Coralbells). Dainty bright pink25
HOLLYHOCK. Best double in finest mixture10

Special Perennial Seed Offer. We have a nice stock of perennial seeds on hand this fall. We wish to move this year's stock all out this season. To do so we make this special, attractive offer.
Everyone who sends an order for Perennial Seed amounting to \$2.00 or more may have the order for just one-half the catalog price, postpaid.

HELIANTHUS Angustifolius	\$0.10
LYCHNIS Arkwrighti. Finest mixture.	.25
Chalcedonica (Ragged Robin)10
LINUM (Perennial Flax). Finest blue.	.10
LILY, Regal. Easy to grow from seed.	.25
Tenuifolium (Coral Lily)25
LUPINES, Russell's English. English seed25
NEPETA Macrantha. For the rockery.	.15
PANSY, Engelmann's Giants. The best.	.35
Raggi's Giants. The best Swiss25
Brand's Superb Mixture.10
Pansies are not perennials, but if the seed is sown in August and the little plants transplanted when large enough, the plants will be large enough to bloom by the time winter sets in. They should be mulched over winter with some coarse mulching. When this is removed in early spring, they will be ready to burst into almost immediate bloom.	
PETUNIA. Seed can be seeded just before winter sets in and it will germinate with the first opening of spring. Many think this the best season for planting Petunia seed.	
Balcany Petunias	Pkt.
Black Prince. New. Deep velvety red.	\$0.25
Cornflower Blue. New cornflower-blue25
Balcany Blue. Intense rich blue15
Balcany Red. A deep rich crimson ..	.15
Balcany Rose. A deep fine rose15
Star of California. Crimson with star center15
White. A pure rich white15
Finest Mixture. All colors mixed ..	.15
Bedding Petunias	
Rose of Heaven. A brilliant dwarf rose.15
Rosy Marn. Rose-pink, white throat.	.15
Vialacea. A velvety deep violet15
Striped and Blatched. Inimitable10

Grandiflora Petunias	Pkt.
Dainty Lady. The new yellow Petunia	\$0.40
Ramany Lass. A rich deep crimson.	.25
Theodosia. Largest fringed Petunia.	.35
Elk's Pride. Darkest velvety purple.	.25
Giants of California. The ruffled Giant Mixture25
Brand's De Luxe Mixture. All colors mixed10
ORIENTAL POPPY, All-Color Mixture.	.10
PORTULACA - Mass Rase. Sow late fall.	
Best Double Mixture15
Best Single Mixture10
PEONY SEED. We have produced many of the world's best Peonies. To do this we have saved and planted seed of the best varieties for many years. We offer this seed to our customers. Plant Peony seed and get new varieties that no one else has. It is the most exciting flower sport in the world. 50 selected seeds, \$1.00; oz., \$2.00	
PLATYCODON Grandiflorum (Balloon Flower). Blue10
POPPIES, ICELAND, The New Emperor. Fine orange25
The New Empress. Salmon-rose25
Imperial Jewels Mixture. The latest.	.25
SAPONARIA Ocymoides. Deep rose ..	.10
SCABIOSA Caucasica, Isaac House Strain15
SWEET PEAS. In many parts of the country Sweet Peas are sown in late fall.	
Brand's Unrivaled Mixture. All colors	.10
SWEET WILLIAM, Single Newport Pink10
Single Halborn Glory. Many colors.	.10
Single White10
Single Dark Crimson10
Single Scarlet Beauty10
Single Finest Mixture10
Double Finest Mixture10
Sweet Wivelsfield. A larger Sweet William10
VIOLA Cornuta. (Double Tufted Pansies)10



Prosperine

Oriental Poppies

For gorgeous garden effects in May and June, nothing in all the world of flowers surpasses the Oriental Poppy.

Our fields of this flower now cover an acre of ground and contain the finest varieties to be found. In addition to the well known old-fashioned orange-red Poppy, we now have many shades of pink, red and lavender. Some of these are brilliant enough to call for a green or white background, while others are soft enough to harmonize with the most delicate spring flowers.

We are always looking for good new sorts and this year we believe we have as complete a list of good kinds as can be found anywhere.

We invite Poppy lovers to visit us during Poppy Days, and we assure them they will see a sight that will gladden their eyes. 20,000 Poppies all in bloom at one time is truly a sight worth seeing.

When to Plant

The Oriental Poppy is best handled during its dormant season in the summer. After blooming, the Poppy first ripens its seeds, and then the top dies to the ground. In late August it becomes thoroughly dormant for a period of several weeks and then a new set of leaves appear. We begin to fill our orders when the plant first becomes dormant and we continue to send out plants during the fall months.

A plant during the dormant season appears dead, and you may not be at all pleased when you receive a consignment of these roots. But carry out the following directions and in a very short time your plants will show signs of life.

How to Plant

Dig a hole so deep that the root extends straight down its full length with its top two inches below the surface. With the root in place, fill the soil about it until the hole is one-half full, pack the soil solid about the root and then fill the hole full of water and let seep entirely away. Then fill hole level full of soil and leave same pulverized on top.

Caution

Many cover their perennials with leaves, and during the course of the winter the leaves pack down and smother the plants. This is especially disastrous to the Oriental Poppy. It is better to cover with 6 inches of wheat or rye straw, sudan grass, or wild hay, any of which is perfectly safe.

We Supply a Large Root

We do not handle the small Oriental Poppy roots sold at cheap prices. We send a root that is worth what we ask for it, a big root that will grow and bloom well the first year.

AUSTRALIA. A real acquisition to the list of new Poppies. A large flower in a deep crimson-red with a gorgeous throat coloring. A very pleasing new kind.
Each \$2.00; 3 for \$4.50

CAVALIER. 34 inches. Larger than the enormous variety Wurtembergia. Probably the largest of all Oriental Poppies. The flower is perfectly formed, and the color is a rich glowing red. We think it one of the best of the several new sorts that Dr. Neeley sent out. Every Poppy lover should have it. We paid \$25.00 a root for several of these new kinds, Cavalier being one of them.
Each \$1.00; 3 for \$2.50

CERISE BEAUTY. 32 inches. This variety produced large flowers of a beautiful shade of cerise-pink, with blood-crimson center, and glittering black blotches at base of petals.
Each 50c; 3 for \$1.00

ECHO. Another new variety that is very choice. A silvery pink held well erect on strong stems. Extremely late. Prolong your blooming season by ordering this variety.
Each \$1.00; 3 for \$2.50

ENCHANTRESS. 36 inches. Here is a variety entirely different from all other Oriental Poppies. An immense flower in a rich lavender, borne on tall stems. Most outstanding.
Each \$1.00; 3 for \$2.50

JUNE DELIGHT. Search for a pure pink Oriental Poppy has at last resulted in this wonderful variety. There are other pinks but we believe this the best of all. A pure even rose-pink of fine form and size borne on strong graceful stems. We paid \$15.00 per root for June Delight to start with.
Each \$1.00; 3 for \$2.50

LULU A. NEELEY. 34 inches. A rich deep crimson-red with no trace of orange in its color. A prolific blooming variety which is excellent for a cut flower. Many call this the crimson-red.
Each \$1.00; 3 for \$2.50

MRS. PERRY. 29 inches. Where the red or orange will not blend well with other flowers, use Mrs. Perry, a beautiful large salmon-pink. A most pleasing even shade of pink. A variety that seldom dies out.
Each 35c; 3 for \$1.00;
6 for \$1.50; 12 for \$2.50

MANDARIN. 28 in. A gorgeous rich deep red with no blotch on the petals after the root becomes thoroughly established. This is a crackerjack.
Each \$1.00; 3 for \$2.75

OLYMPIA. 23 inches. The earliest and also the hardiest of all Oriental Poppies. If you have difficulty with your Poppies dying out, try Olympia and you will have no such trouble. Olympia comes a full week ahead of any other variety. It is just going as the next earliest starts to open. The flowers are of medium size, semi-double, and of a rich soft orange-red, a very pleasing color. **Plant Olympia, the True Iron Clad Oriental Poppy that never dies out.**
Each 35c; 3 for \$1.00;
6 for \$1.50; 12 for \$2.50

PERRY'S WHITE. This is the best of the white Oriental Poppies. It is of medium size. The petals are white with a slight touch of pink at the base.
Each, 75c

ORANGE QUEEN. This variety comes into bloom just after Olympia. The color is a brilliant deep orange with a great rich velvety black center. This is also a very hardy variety.
Each 35c; 3 for \$1.00;
6 for \$1.50; 12 for \$2.50

PROSPERINE. 36 inches. Immense truly saucer-shaped flowers with petals of the greatest substance. The color is a soft rich scarlet-red. The great flowers are carried on long perfect stems. One of the outstanding ones.
Each \$1.00; 3 for \$2.50

WURTEMBERGIA. 38 inches. An enormous cerise-scarlet. The plant is unusually tall with strong stems that hold the tremendous flowers erect. An average blossom will measure 8½ inches in diameter, the standard by which all Oriental Poppies are judged.
Each \$1.00;
3 for \$2.50



Five *Favorites* **COLLECTION**

**One Strong Root
of Each of the
Five Beautiful
Varieties Here
Illustrated**

Mrs. Perry
Cerise Beauty
Olympia
Prosperine
Wurtembergia

**A Total Value of \$3.20
For **\$2.50****

The Pappy **as a Cut Flower**

Many people think they cannot cut their Oriental Poppies for house decoration. Cut the blooms when fresh and dip three to four inches of the stem immediately in boiling water for three minutes. Then place in cold water. So treated, the blooms will hold nicely for three days.



National Agricultural Library
RECEIVED
★ NOV 11 1975 ★
U. S. Department of Agriculture

Persian Lilacs for HEDGES



The Persian Lilac in its different shades makes the finest of all untrimmed flowering hedges for the cold parts of the United States. We have such a hedge on our grounds, now some twelve years old, that everyone who sees it in bloom pronounces the greatest sight in flowers they have ever seen. This hedge is thirty rods long, about twelve feet high, and as many feet through at the ground. We have never touched the hedge with shear or knife. It is just as nature has made it and every year crowds of people view it while in bloom and marvel at its wonderful beauty.

Where a tall untrimmed hedge is wanted this is the best and most beautiful to be had.

We carry these Persian Lilacs in the deeper roselike shades, and also in a beautiful light pink shade. The most beautiful hedge is obtained where the different shades are mixed.

Directions For Planting: For a tight hedge plant 2 feet apart. For a tall screen plant 6 feet apart.

Specimen Plants—Own Root:
2 to 3 feet \$1.00
3 to 4 feet 1.25

Nice Hedge Plants:
18 to 24 inch, 10 for \$ 4.00; 25 for \$ 8.75
2 to 3 feet, 10 for 7.50; 25 for 15.00
3 to 4 feet, 10 for 10.00; 25 for 20.00

**BRAND PEONY
FARMS, INC.**

**BOX 408
FARIBAULT, MINN.**