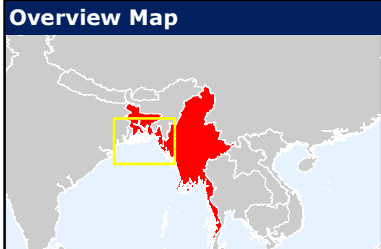
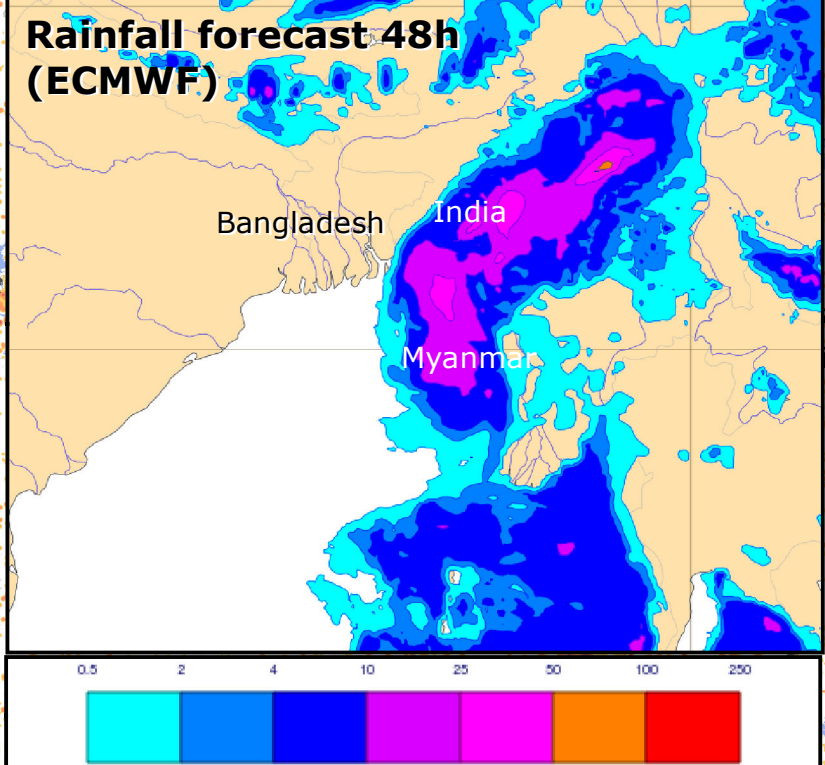
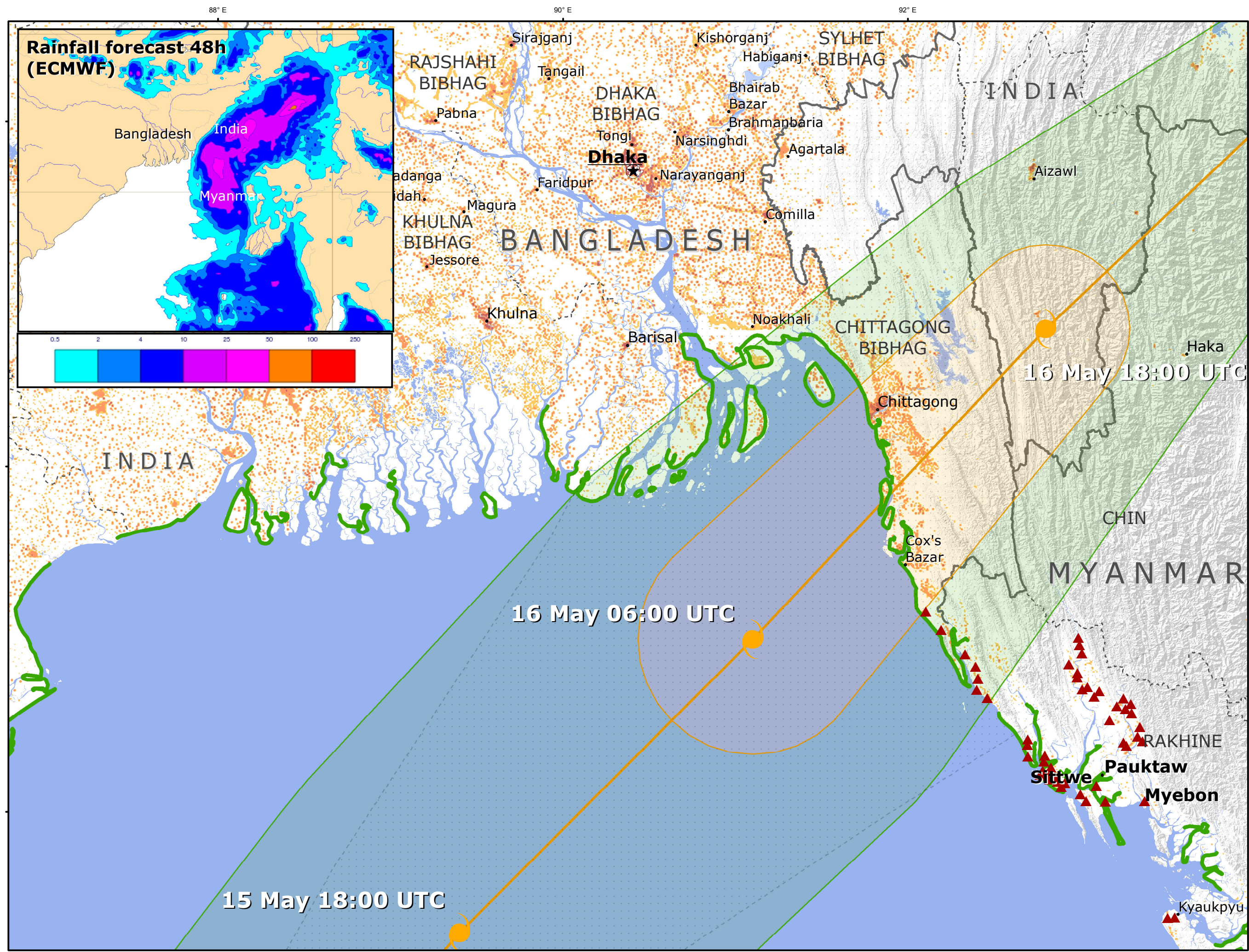


15 May 2013: Bangladesh - Myanmar - Tropical Cyclone MAHASEN



Cartographic Information
 Scale (A3) 1:2.242.389
 0 850 1.700 3.400 Km
 Map coordinate System: WGS84

- Legend**
- Storm Surge (JRC)**
 - < 1m
 - Wind Buffers**
 - 64 km/h
 - 92 km/h
 - 119 km/h
 - UncertaintyCone
 - Refugee Camps

Disaster Type
 Tropical Cyclone

Map Information
 Tropical Cyclone MAHASEN is approaching the coasts of Bangladesh, threatening also the vulnerable areas of Rakhine State in Myanmar. Strong winds, heavy rainfall and storm surge could affect the landfall area as the centre of MAHASEN approaches land on 16 May.

Data Sources
 Base Data: JRC, ESRI
 Cyclone Information: JRC, GDACS (bulletin n.20)
 Refugee Camps: ECHO, OCHA

Map production
 Production date: 15/05/2013
 Reference date: 14-17/05/2013
 Map produced by JRC (Joint Research Centre)

Dissemination/Publication
 © European Commission, 2013.
 Reproduction is permitted provided the source is acknowledged.

Disclaimer: this map does not reflect the official opinion of the European Communities or other European Community institutions. Neither the European Commission nor any person or company acting on the behalf of the European Commission is responsible for the use that may be made of the information contained in this map.