

Takao	1120	Tokonami, Takejiro	128, 166	Towada Lake	56
Takayama, Hikokuro	111	Tokugawa, Hidetada	100	Toyotomi, Hideyoshi	
Takenouchi-shikibu	111, 129	Tokugawa, Iyemitsu	128		99, 108, 182, 817
Taketori-monogatari	90, 954	Tokugawa, Iyesada	110	Tozama Daimyo	101, 102
Talkies	1028	Tokugawa, Iyesato	161	Trachoma	893
Tameto (Takuma)	974	Tokugawa, Iyeshigé	112	Track and Field	1008
Tamsui	1119	Tokugawa, Iyeyasu		Trade with, Argentine	435
Tanabata	1039		90, 100, 108, 109	Asiatic Russia	429
Tanaka, G.	166	Tokugawa, Major-General		Australia	436
Tang Dynasty	84		597, 729	Austria	432
Tangku Truce	210	Tokugawa, Mitsukuni		Belgium	433
Tani, Tateki	117		103, 111, 128	British India	427
Tanizaki, Junichiro	967	Tokugawa, Shogunate	100	Canada	435
Tankei	975	Organization of	102	Chile	435
Tanomoshi-ko, Financial As-		System of Control	101	China	426
sociations	98	Tokugawa, Tsunayoshi	103, 128	Dutch East Indies	429
Tanuma, Okitsugu	129	Tokugawa, Yoshimune	109, 128	East Africa	436
Taro	479	Tokugawa, Yoshinobu (Keiki)		Egypt	436
Tax, on Bourses	305		113, 129	France	431
on the Issue of Bank Notes	305	Tokutomi, Iichiro	940	Germany	432
on Liquors	303	Tokyo	1043-1053	Great Britain	431
Tax System, Revision of	291	Administration	1052	Hawaii	437
Taxes and Duties	290-306	Area	1043	Holland	433
Tayama, Katai	966	Buildings	1044	Hong-kong	428
Tea	479	Commerce and Industry	1044	Italy	432
Tea Ceremony, Origin of	97	Education	1049	Kwantung Province	427
Telegrams Handled	702	Electric Railways	1046	Manchoukuo	426
Telegraph Lines	702	Enlarged	1044	New Zealand	437
Telegraph Offices	701	Factories	1045	Norway	433
Telegraph Service	701-704	Finance	1053	Philippine Islands	430
Wireless	703	Harbour	1047	Poland	432
Telephone Lines, Apparatuses		History of	1043	Straits Settlements	428
and Batteries	706	Industry	1045	Sweden	432
Telephone Messages	705	Location and Climate	1043	Switzerland	433
Telephone Service	704-707	Motor Buses	1046	Turkey	434
Wireless	706	Parks	1048	Union of South Africa	436
Telephone Subscribers	705	Population	1043	U. S. A.	434
Temperature	31	Religion	1050	Uruguay	435
Tempo Era	105	Retail Markets	1044	Trade Ports	409
Tenant Disputes	866, 867	Rivers	1047	Tramcar	717, 718
Tenchi, the Emperor	84, 182	Sewerage Works	1048	Treaties (See p. 12, Contents,	
Tendai Sect	813, 814	Social Works	1051	Appendix)	1222-1317
Tennis	1009-1012	Streets	1047	Trojanovsky, A.	197, 495
Tenno (the Emperor)	134	Transportation	1046	Trust Business	344-347
Tennoji Temple	979	Underground Railways	1047	Tsingtao, Attack on	188
Tenri Sect	811	Waterworks	1047	Tsingtao falls	124
Tenryuji Boats	95	Wholesale Markets	1045	Tsubouchi, Shoyo	963
Tenshu-kaku	97	Tokyo Asahi Shimbun	944	Tsuchii (Doi), Bansui	965
Terakoya	93, 780	Tokyo Chamber of Commerce		Tsuchiya, Rear-Admiral	124
Terao, Susumu	194	and Industry	363	Tsuruta, Yoshiyuki	997
Terauchi, Masatake	164	Tokyo Chozo Ginko	327	Tsushima	95
Textiles Consumption Tax	305	Tokyo, the New Capital	114	Tuberculosis	893
Textile Industry	555-583	Tokyo Imperial University		Tuberculosis Hospitals	880
Teusler, Dr.	874		794-797	Tunguse	81
Thompson, Dr.	817	Tokyo Nichi Nichi	946	Typhoid Fever	889, 890
Three Powers Interference	185	Tokyo Stock Exchange	377	Typhoon in 1934	31, 695
Tides	37	Tolstoy's Humanism	956	Typhus	890
Tientsin Treaty	186	Tong-haks Party	186		
Tobacco Monopoly	306	Tonnage Dues	305		
Todaiji Temple	971	Topknots, cut off	115		
Togo, Heihachiro	13, 122	Tosa-Nikki	960		
		Tourist Industry	720		

U

Uchida, Shinya	138
Uda, the Emperor	89

U (right) Daijin	86, 87	Waké, Kiyomaro	91	Yamagata, Aritomo	
Ueno and Other Battles	129	Waldeck, Governor	124		117, 120, 159, 164
Ukiyoyé	979	Wanpaoshan Affair	204	Yamagata Cabinet	156
Unemployment	856	War, Department of	143	Second	159
Union Church	818	Warehousing	621-625	Yamagata, Daini	111
United States of America		Balance of Stocks	622	Yamaka, Soko	111
	183, 185	Chief Warehouse Companies		Yamakawa, H.	171
First Treaty with	110	Insurance	624	Yamamoto Cabinet	163
and Open Door Policy	200	Present State	622	Yamanouchi, Toyonobu, Lord	
Relation with	200-203	Value of Stores	623	of Tosa	113, 114
Universal Suffrage and		War Ministry	143, 232	Yamato-Takeru	82
Proletariats	173	Washington Disarmament		Yamato Tribe	81
Universal Suffrage	165	Conference	188	Yamatoyé	973
Universities	793, 794	Hughes Proposal	188	Yamazaki, Ansai	111
Unkei	975	Watches and Clocks	590	Yamazaki, Tatsunosuké	137
Unzen	58	Water-melons	479	Yano, Ryukei	965
U.S.S.R., Relation with		Waterworks	887	Yasukuni Shrine	1039
	196-200	Weaving	573-575	Yayoi Style	82
Uraga	110, 183	Introduction of	89	Yedo Age	99
Urbanization	72	Webb Bill	201	Commerce and Industry	106
Utamaro Kitagawa	979	Weights and Measures	6	Cultural Life	103, 104
Utilities	626-644	Whales	501	Economic Decline	104
Uyehara, Yusaku	162	Wheat	471, 625, 1177	Factories	107
Uyeno, Riichi	944	Imported	627	Highways	102, 106
		Encouragement Policy	629	Labourers	107
		Wheat Flour	626-630	Loyalists, Uprising of	111
		Exports of	628	Sea Transportation Lines	106
		in 1934	629, 630	Yemakimono	973
		Production	628	Yedo, Establishment of	100
		Wholesale Indices	391	Yeto, Shimpei	116, 117
		Wholesale Prices	386	Yingkow	1191, 1207
		William II, King of Holland		Yokohama	1066-1070
		Area	110, 183	Area	1067
		Banks	1068	Banks	1068
		Business Corporations	1068	Business Corporations	1068
		Commerce	1067	Commerce	1067
		Education	1069	Education	1069
		Electric Tramways	1069	Electric Tramways	1069
		Factories	1069	Factories	1069
		Finance	1070	Finance	1070
		Foreign Residents	1067	Foreign Residents	1067
		Foreign Trade	1068	Foreign Trade	1068
		Gas	1068	Gas	1068
		Harbour	1069	Harbour	1069
		History of	1066	History of	1066
		Industry	1069	Industry	1069
		Location	1067	Location	1067
		Population	1067	Population	1067
		Quake and Rehabilitation	1066	Quake and Rehabilitation	1066
		Social Works	1070	Social Works	1070
		Yokohama Mainichi	938	Yokohama Mainichi	938
		Yokohama Shokin Ginko		Yokohama Shokin Ginko	
		(Yokohama Specie Bank)		(Yokohama Specie Bank)	
			333, 334, 363		333, 334, 363
		Yomiuri	935	Yomiuri	935
		Yoritomo Minamoto	92, 93	Yoritomo Minamoto	92, 93
		Yorodzuya, Hyoshiro	937	Yorodzuya, Hyoshiro	937
		Yorozu Choho	940	Yorozu Choho	940
		Yosé (Story-Telling)	1027	Yosé (Story-Telling)	1027
		Yoshii	114	Yoshii	114
		Yoshino and Kumano	57	Yoshino and Kumano	57

X

Xavier, Francis	96, 817, 874
-----------------	--------------

Y

Yakushiji	971
Yamada, Isaburo	726
Yamada, Kosaku	992
Yamada, Yemosaku	978

Yoshitsuné Minamoto	127	Young Women's Associations	804	Z	
Yoshizawa, Kenkichi	197, 206	Yuan Invasion	95	Za, Guilds	98
Young Men's Associations	804	Yubin Hocht	938	Zen Sect	816
Y.M.C.A.	818	Yui-no Shosetsu	108	Zinc Mining	544
Young Men's Training Institutes	804	Yuzu-nembutsu Sect	815		

FIRST — IN AUTOMOBILE MANUFACTURING



IT is a responsibility as well as an honor to be the largest builder of automobiles not only in Japan but in the entire world. Research, engineering, manufacturing methods and values must be preeminent if an organization is to maintain its preeminent position.

CHEVROLET	BUICK
PONTIAC	CADILLAC
OLDSMOBILE	LA SALLE
VAUXHALL	OPEL
BEDFORD	BLITZ

G.M.C.

GENERAL MOTORS JAPAN LTD.

THE FOREIGN AFFAIRS ASSOCIATION OF JAPAN
556-8 Osaka Building, Hibiya Park, Tokyo

THE
**Kanegafuchi Cotton
 Spinning Co., Ltd.**

ESTABLISHED 1889

HEAD OFFICE:

Sumida-machi, Mukojima-ku, TOKYO

President: SHINGO TSUDA, Esq.

CAPITAL SUBSCRIBED Yen 60,000,000
 CAPITAL PAID-UP " 39,063,825
 RESERVES VARIOUS " 69,523,731

—(DECEMBER 1934)—

Reelers and Throwsters of Raw Silk: Manufacturers of all class of Pure Silks; Spinners of all kinds of Cotton and Spun Silk Yarns; Manufacturers of all kinds of Cottons Cloth and Spun Silk Fabrics. Printing, Dyeing, Bleaching and Finishing Works.

For Home and Foreign Markets

AGENTS:

IN ALL THE IMPORTANT COMMERCIAL CENTERS
 OF THE WORLD

ESTABLISHED IN 1872

OJI SEISHI KABUSHIKI KAISHA

(THE OJI PAPER MANUFACTURING CO., LTD.)

CAPITAL STOCK . . . Yen 149,988,000

President: GINJIRO FUJIHARA

Vice-President: KIKUJIRO TAKASHIMA

Annual Output:

Paper, all kinds 750,000 Tons
 Chemical Wood Pulp 300,000 ..

Manufacturers of PAPER AND PULP

LIST OF MANUFACTURES:

Cigarette Paper, Carbonizing Tissue, Condenser Paper, Celluloid Tissue, Printing Paper, Newsprint, Book Paper, India Paper, Cover Paper, Art Paper, Simili Paper, Writing Paper, Bond Paper, Ledger Paper, Foolscap, Postcard Paper, Drawing Paper, Blotting Paper, Wrapping Paper, Glassine, Imitation Parchment, Kraft Paper, Match Paper, Coloured Paper, Wall Paper, Strawboard, Manilaboard, Coated Manilaboard, Bleached and Unbleached Sulphite Pulp, Sulphate Pulp, etc.

Main Office: Sanshin Building, Tokyo, Japan

PAPER AND PULP MILLS:

Oji	Kyoto	Kumano	Toyohara
Jujo	Nagoya	Kokura	Ochiai
Kamedo	Nakatsu	Sakamoto	Shiritoru
Senju	Fuji No. 1	Yatsushiro	Maoka
Yedogawa	Fuji No. 2	Tomakomai	Noda
Miyakojima	Fuji No. 3	Yebetsu	Tomarioru
Yodogawa	Shibakawa	Kushiro	Esutoru
Kanzaki	Iwabuchi	Otomari	Chosen
		Fushiki	



TRADE



MARK

PURE CANE SUGAR

Raw and Refined—Fuji Brand Cube and Granulated

ALCOHOL

ESTABLISHED 1900

CAPITAL - - - - - Yen 63,000,000

13 Raw Sugar Mills in Formosa—Two Refineries on Mainland

TAIWAN SEITO KABUSHIKI KAISHA

(FORMOSA SUGAR MANUFACTURING Co., LTD.)

Head Office: Heito, Formosa, Japan

TOKYO OFFICE: YURAKU BUILDING, MARUNOUCHI, TOKYO, JAPAN

Trade  Mark

The Furukawa Electric Co., Ltd., TOKYO, JAPAN.

ESTABLISHED 1896

HEAD OFFICE:
8, Nichome, Muromachi,
Nihonbashi-ku, Tokyo,
Japan

Cable Address:
"FURUELECO
TOKYO"



OSAKA OFFICE:
4, Nichome, Dojima
Hama-Dori, Kita-ku,
Osaka, Japan

Cable Address:
"FURUELEKO"
Osaka

HEAD OFFICE:

Capital ¥ 22,650,000.00
Annual Production ¥ 70,000,000.00
Annual Consumption of Copper 40,000 tons

WIRES & CABLES

Bare Wires & Cables, Insulated Wires & Cables, Power Cables,
Telephone & Telegraph Wires & Cables & Accessories, etc.

METAL & ALLOY PRODUCTS

Copper, Brass, Aluminium & Alloy Sheets, Circles, Pipes & Rods, etc.

Works & Laboratory:

Nikko Copper Works, Nikko.
Yokohama Electric Wire and Cable Works,
Yokohama.
Kyushu Electric Wire & Cable Works, Moji.
Osaka Copper Works, Osaka.
Amagasaki Copper Works, Amagasaki.
Osaka Battery Works, Amagasaki.
Physical and Chemical Research Labora-
tory, Tokyo.

Office & Agencies:

JAPAN:—Tokyo, Yokohama, Osaka,
Nagoya, Moji, Sendai, Sapporo, Keijo,
Taihoku.
OVERSEAS:—Dairen, Mukden, Hsin-King,
Harbin, Shanghai, Tientsin, Tsingtao,
Hankow, Hongkong, Canton, Bangkok,
Manila, Soerabaja, Bombay, Calcutta,
Rangoon, London, Berlin, Buenos Aires,
Montevideo, etc.

TELEGRAPHIC ADDRESS
NIHONKEORI, KOBE.



ESTABLISHED IN 1896.

N. K. K.

The Nippon Keori Kaisha, Ltd.

No. 691, NISHIDE-MACHI, KOBE, JAPAN.

P. O. B. HYOGO-30.

CAPITAL SUSCRIBED ¥ 50,000,000

RESERVE FUNDS ¥ 30,000,000

ANNUAL OUTPUT ¥100,000,000



MANUFACTURERS of

WOOL TOPS,

WOOLLEN & WORSTED YARNS,

WOOLLEN MUSLINS, FLANNELS,

WOOLLEN & WORSTED CLOTHS,

BLANKETS & RUGS, HOSIERY, ETC.



BRANCHES

TOKYO, OSAKA, TIENSIN.

MILLS

KAKOGAWA, INNAMI, AKASHI, HIMEJI, GIFU, NAGOYA.



DAIREN KISEN KAISHA

(Dairen Steamship Co. Ltd.)

Head Office: DAIREN

Capital Yen 25,700,000 Tel. Address: "DAIKI DAIREN" Fleet 45 vessels, 166,000 Gross Tons

Branches:

Shanghai, Tsingtao, Tientsin, Kobe, Tokyo,
Hongkong, Newchwang, Antung

Booking Agents: Regular Services

JAPAN TOURIST BUREAU
THOMAS COOK & SONS
AMERICAN EXPRESS CO.
CIE DE WAGON LITS
CHINA TRAVEL SERVICE
S.M.R. STATIONS
CHOSEN MANCHURIA INFORMATION
BUREAU (S.M.R.)
EIWA YOKO (Dairen)

REGULAR SERVICES:

Dairen-Tsingtao-Shanghai.....Every 2 or 3 days
Dairen-Tientsin.....Every other day
Dairen-Keelung-Takao.....Once every 10 days
Dairen-Tsuruga-Fushiki-Niigata.....Once a week

Through Tickets issued for Europe
From Shanghai and Tsingtao
Via D.K.K. Line
South Manchuria Railway and
Manchoukuo State Railways
Freight Services to
Europe, U.S.A., Australia, and Near
Sea Ports



Cable Address:
"DOCKYARD," KOBE
A.B.C. 6th, Ber tley's, and
Western Union Codes used



MAIN OFFICE:
Higashi Kawasaki-cho
2-chome, Soto-ku,
KOBE

Kawasaki Dockyard Co., Ltd.

(Contractors to the Imperial Japanese and Foreign Governments)

KOBE

SHIPBUILDERS, ENGINEERS, REPAIRERS, ELECTRICIANS,
STEEL PLATES, SHEET ROLLERS, AEROPLANE
BUILDERS and SHIP OWNERS

WORKS:

SHIPBUILDING and ENGINEERING WORKS: Higashi Kawasaki-cho 2-chome, Soto-ku,
KOBE.

PLATE and SHEET MILLS: Wakinoama-cho 3-chome, Fukiai-ku, KOBE.

AVIATION WORKS: Higashi Shiraike, Hyogo-ku, KOBE.

STEEL WORKS: Higashi Shiraike, Hyogo-ku, KOBE.

SUBSIDIARIES:

KAWASAKI LOCOMOTIVE and CAR CO., LTD.: Wadayama-dori, 2-chome, Hyogo-
ku, KOBE.

KAWASAKI STEAMSHIP CO., LTD.: Kaigan-dori No. 8, Kobe-ku, KOBE.

BRANCHES

Tokyo, Yokohama, Nagoya,
Osaka, Wakamatsu, Moji,
Yawata, Otaru.



Dairen, Tsingtau, Shanghai,
Hankow, London, Sydney,
Seattle, Portland &
Vancouver.

YAMASHITA KISEN KAISHA

(The Yamashita Steamship Co., Ltd.)

Head Office: KOBE, JAPAN

Cable Address: "YAMASHITA, KOBE"

SHIPOWNERS & OPERATORS

Agencies in all principal ports of the world



KOKUSAI UNYU KAISHA

(THE INTERNATIONAL EXPRESS CO., LTD.)

Managing Director: S. TSUKISHIMA

HEAD OFFICE: 221 YAMAGATA-DORI, DAIREN

Cable Address: "MALN" Dairen. Telephone No. 3151

BUSINESS LINES:

Shipping, Chartering, Warehousing, Stevedoring, Cargo Financing,
Customs Brokers, Marine and Fire Insurance, Labour Supply,
Forwarding Business, and Sales on Commission

BRANCHES:

All over Manchoukuo and Shanghai, Tientsin, Shingishu,
Seishin, Rashin, Yuki, Tokyo, Kobe, etc.

The Nisshin Cotton Spinning Co.

President: SEIJIRO MIYAJIMA, Esq.

CAPITAL	¥ 27,000,000
CAPITAL PAID UP	19,750,000
SPINDLES	513,000
WEAVING MACHINES	5,718

HEAD OFFICE:

20 Naniwa-cho, Nihonbashi-ku, TOKYO

Main Factory:

Kameido, Joto-ku, TOKYO

Branch Offices and Factories:

Nagoya, Osaka, Tokyo, Okazaki, Hamamatsu, Takaoka, Toyama,
Tsingtao, Kawagoyé

JAPAN IN PICTURES

• ASAHIGRAPH OVERSEAS EDITION •

HERE ARE PICTORIALS AND BOOKS
INTERPRETING THINGS JAPANESE

A Pictorial Monthly, interpreting Japan and things Japanese to the Western World in order to promote international understanding and friendship. Each edition of "Japan In Pictures" contains an extensive collection of pictures, done in rotogravure, with explanatory notes in English and French.

Printed and published on the 5th of each month, Subscription rates; 50 sen per copy. Subscription for 12 months ¥ 5.74 in Japan, ¥ 6.46 abroad, postage prepaid.

JAPAN A PICTORIAL INTERPRETATION, 1932

Yen 3.00 (foreign postage, 50 sen)

CHANGING JAPAN SEEN THROUGH THE CAMERA, 1933

Yen 3.00 (foreign postage, 50 sen)

MANCHOUKUO A PICTORIAL RECORD, 1934

Yen 3.50 (foreign postage, 50 sen)

Publishers

ASAHI SHIMBUN

Tokyo & Osaka, Japan

PROBLEMS

Everyone will agree that the Problems of the Far East are of transcending importance.

It is impossible to evaluate the closely interwoven fabric of the Far East without an understanding of the important component parts.

To understand Japan, it is essential to keep in close touch, not only with current events—startling as they often are—but with an impartial and thoroughly interpretative background of those events—for the events themselves are often but the surface indication of deeper and more significant currents—and those currents are forceful and moving rapidly in these days.

If you wish to keep yourself reliably informed, subscribe to The Japan Advertiser, concededly the leading foreign language daily published in Japan.

The Japan Advertiser is the one and only medium which supplies this information, fully and impartially, and which gives the essential interpretative background.

The Japan Advertiser

HEAD OFFICE:

1 UCHIYAMASHITA-CHO, ITCHOME, KOJIMACHI-KU,
TOKYO

Also publishers of *THE TRANS-PACIFIC*, a weekly export magazine devoted to the promotion of Japanese trade abroad, and containing a summary of current business, social and political developments in Japan and the Far East.

*A National Newspaper For International
Readers*

The Osaka Mainichi & The Tokyo Nichi Nichi

Published in English, Daily Except Mondays

For Those Who Want to Be Informed of
How the World Is Moving, With Particular
Reference to Japan And the Japanese

Subscription Rates:

(By the Year, Payable in Advance)

¥15.40 in Japan, Manchoukuo, ¥23.80 Elsewhere
and China

The Osaka Mainichi Publishing Co.

Osaka Japan Tokyo

Join the Crowd—of the Well Informed

CONSERVATIVE, ACCURATE

THE JAPAN TIMES & MAIL

which was founded in the Keio Era
(1865-1867), is the oldest daily news-
paper in Japan. It is the only journal
in the English language published in
Tokyo under the management and
editorial supervision of Japanese.

DR. HITOSHI ASHIDA, M.P.

President and Editor

MR. URATARO UYEHARA

General Manager

MR. YOSHIO NITOBÉ

Managing Editor

THE JAPAN CHRONICLE

(Daily & Weekly Editions)

Largest Circulation of any Foreign Newspaper
in Japan

Reliable Financial and
Commercial Intelligence

The Best and Widest Advertising Medium

*Specimen Copy, Advertising and Subscription Rates sent
on application to the Managing Director,*

“Japan Chronicle” Kobe

SUBSCRIPTION: Payable in Advance

DAILY EDITION:

¥ 3 per month ¥ 33 per annum

Post free in Japan

Postage abroad ¥2 per month

The WEEKLY EDITION of the JAPAN CHRONICLE

*contains all political, commercial, financial and general news and is well
adapted for mailing abroad, and for filing as a local record*

Published Every Thursday

¥ 4 per quarter ¥ 15 per annum

Post free in Japan

Postage abroad ¥5 per year

XXVIII

Whoever desires to be well posted
on things Japanese and the
course of events in the
Orient should read

“Contemporary Japan”

Published quarterly by

The Foreign Affairs Association of Japan

Osaka Building, Hibiya Park, Tokyo

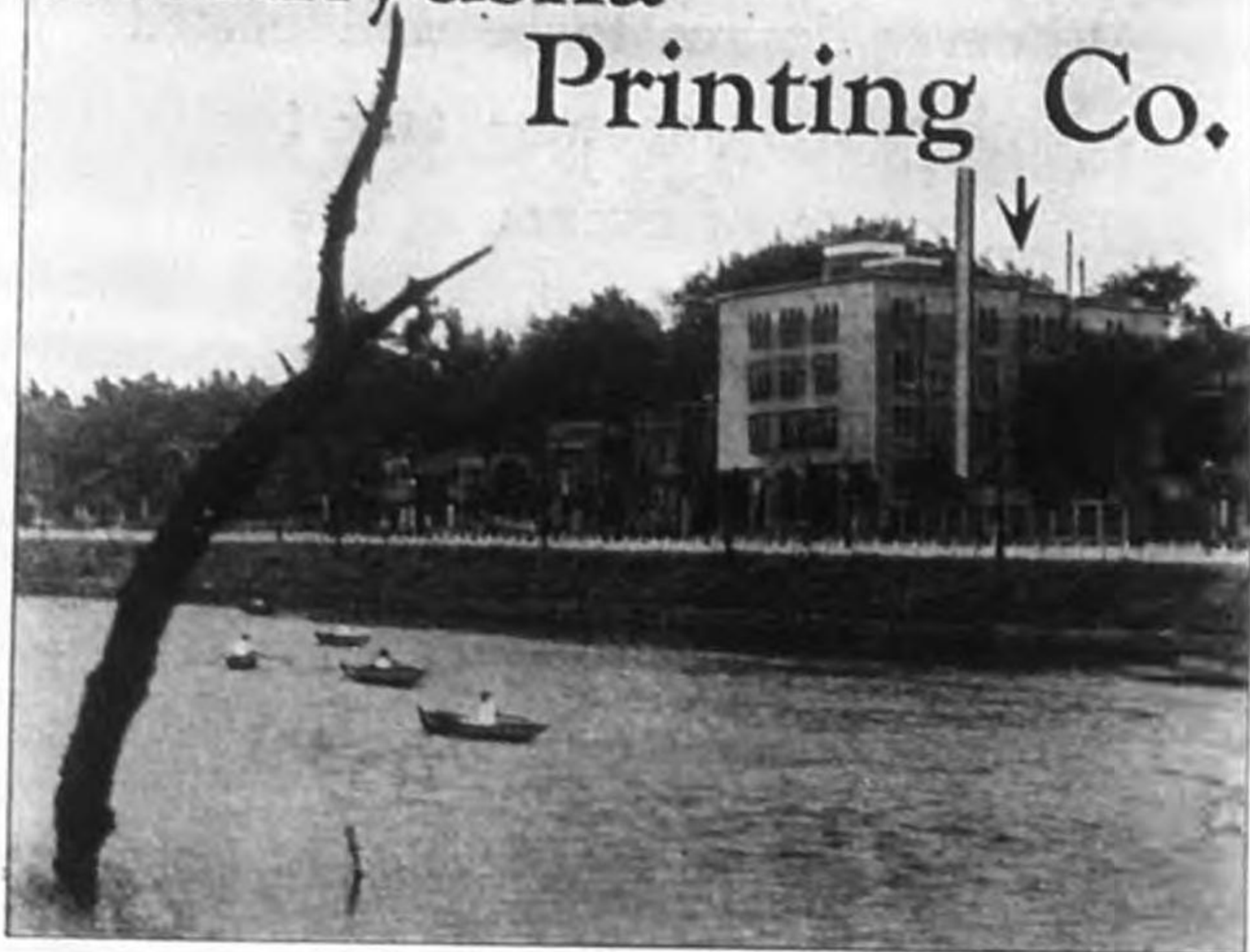
Sample Copy on Application

SUBSCRIPTION RATE (postage prepaid)

A Single Copy	¥ 1.50 (\$.75, 3s.)
One Year	¥ 5.00 (\$ 3.00, 12s.)
Two Years	¥ 9.00 (\$ 5.50, 22s.)
Five Years	¥21.00 (\$13.00, £2 12s.)

XXIX

Kenkyusha Printing Co.



GOOD PRINTING PAYS

The pleasant impression created by good printing adds to the effectiveness of the printed matter. Good printing pays, because it is inviting, persuasive and easy to read.

*All Printing, Foreign and
Japanese, is Neatly
Done*

KENKYUSHA PRINTING CO.

Printers of "THE JAPAN YEAR BOOK"
and "CONTEMPORARY JAPAN"

KAGURA-CHO, USHIGOME-KU, TOKYO

Established in 1912

Cable Add. "TOURIST"

JAPAN TOURIST BUREAU

All Travel Arrangements in Japan,
Manchoukuo & China

- ☆ Itineraries & Information Gratis
- ☆ Railway, Steamship & Aeroplane Tickets
- ☆ Hotel Reservation
- ☆ Guides & Couriers Furnished
- ☆ Inclusive Tours
- ☆ Traveller's Cheques

HEAD OFFICE

Tokyo Station Bldg., Tokyo



Offices in U.S.A.

Los Angeles, Calif. :

Chamber of Commerce
Building,
1151, South Broadway

New York City :

c/o Japanese Government
Railways, Fifth Avenue

Non-commercial organiza-
tion, aiming at promotion of
international friendship,
encouragement of travel,
and securance of closer
co-operation among those
interested in tourism.

SOUTH MANCHURIA RAILWAY



Head Office : **DAIREN**

QUICKEST ROUTE

BETWEEN

EUROPE & THE EAST



Information Bureaux:

Tokyo—Marunouchi Building, Phones: Marunouchi 3131-3135

Osaka—Ando-cho, Sakaisuji, Phones: Hommachi 1700-1701

Shimonoseki—In Front of the Station, Phone: 1962

LEAF TOBACCO Produced in Japan

CHARACTERISTICS.—*Very light of body, yellowish-brown and very bright, slender mid-rib and veins of considerable elasticity, and possessed of a bulk increasing disposition.*

Capable of inflating the output of Cigarettes by 20-30% in comparison with tobaccos produced in other countries.

With no peculiarity of flavour, and being very mild, it characteristically lends itself to harmonious blending with other tobaccos.

LOW PRICE.—*The tobacco cultivation being under the control and supervision of the Tobacco Monopoly Bureau, Imperial Japanese Government, the growers are educated in the art of cultivation and preparation. The co-operation of the Tobacco Growers' Guild, coupled with cheap farm labour, makes possible the low cost of production.*

STABILITY AND CO-ORDINATION OF QUALITY.—*The tobacco-leaves undergo comparison with standard samples, and after rigorous inspection are purchased by the Bureau at statutory prices, and hence unlike common merchandise the qualities as well as the prices are well stabilized. Strict care being thus taken in the selection and unification of quality, as also in the perfection of packing, the tobacco shipped by us is unvaried and co-ordinated in quality.*

Correspondence Solicited SAMPLES UPON REQUEST

Tobacco Monopoly Bureau
IMPERIAL GOVERNMENT OF JAPAN
TOKYO

Cable Address :
"MONOBUREAU," Tokyo

Codes :
Bentley's Complete Phrase Code
Bentley's Second Phrase Code

1775

MAP OF JAPAN

Issued with

THE JAPAN YEAR BOOK, 1935

THE FOREIGN AFFAIRS ASSOCIATION
OF JAPAN

All Rights Reserved

MAP OF JAPAN

Issued with the Japan Year Book, 1925



HOKKAIDŌ AND CHISHIMA
Scale 1:3,000,000

CHŌSEN (KOREA) AND KWANTŌ-SHŪ (KWANTUNG LEASED TERRITORY)
Scale 1:3,000,000

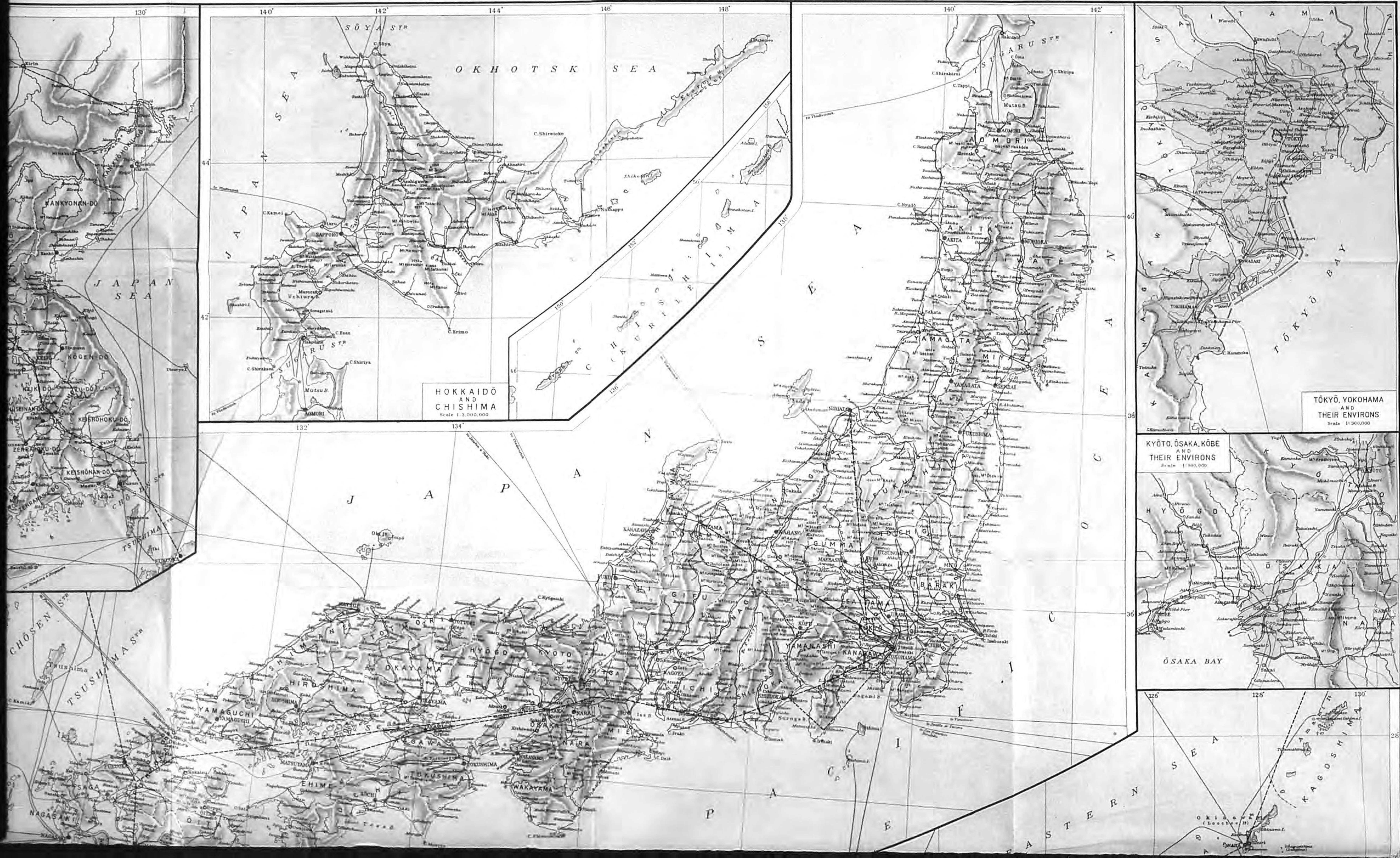
KYŌTO AND THEIR Scale

Scale

EASTERN

MAP OF JAPAN

The Foreign Affairs Association of Japan

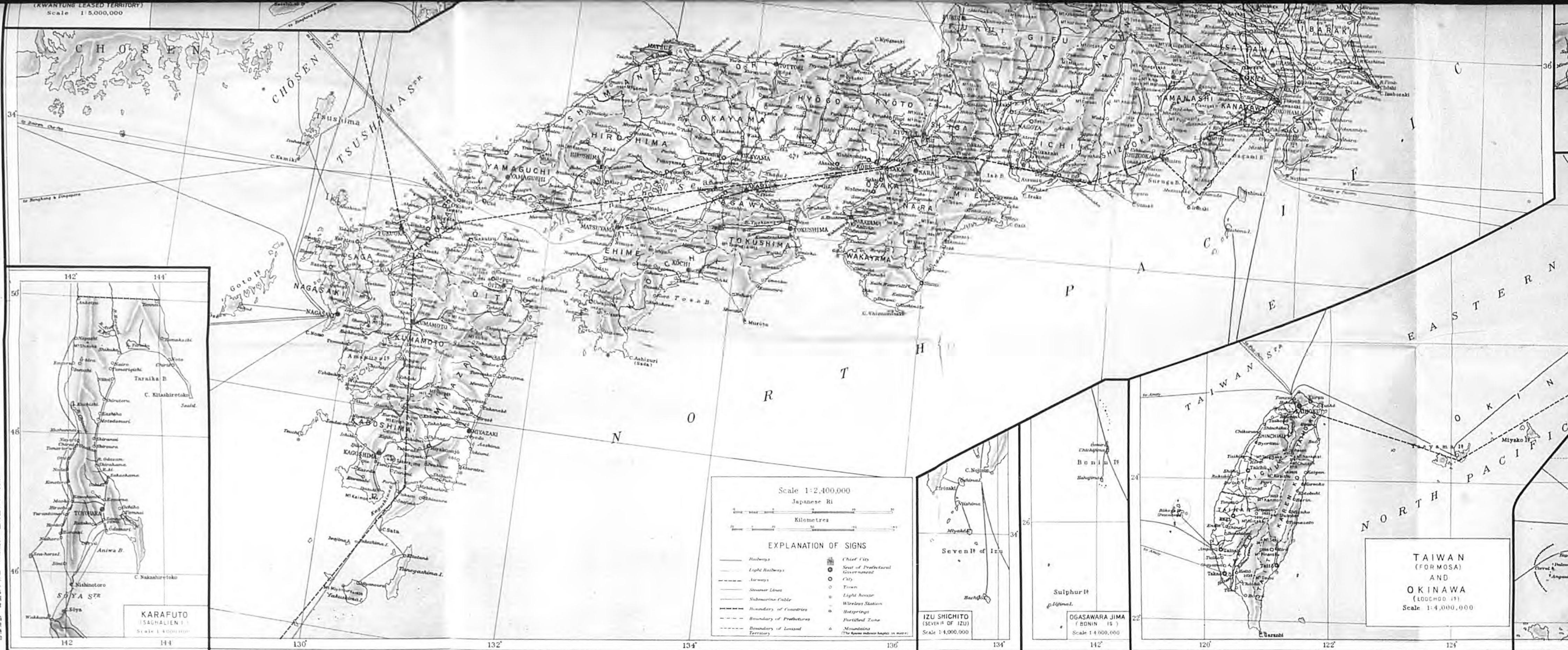


HOKKAIDŌ AND CHISHIMA
Scale 1:3,000,000

TŌKYŌ, YOKOHAMA AND THEIR ENVIRONS
Scale 1:300,000

KYŌTO, ŌSAKA, KŌBE AND THEIR ENVIRONS
Scale 1:500,000

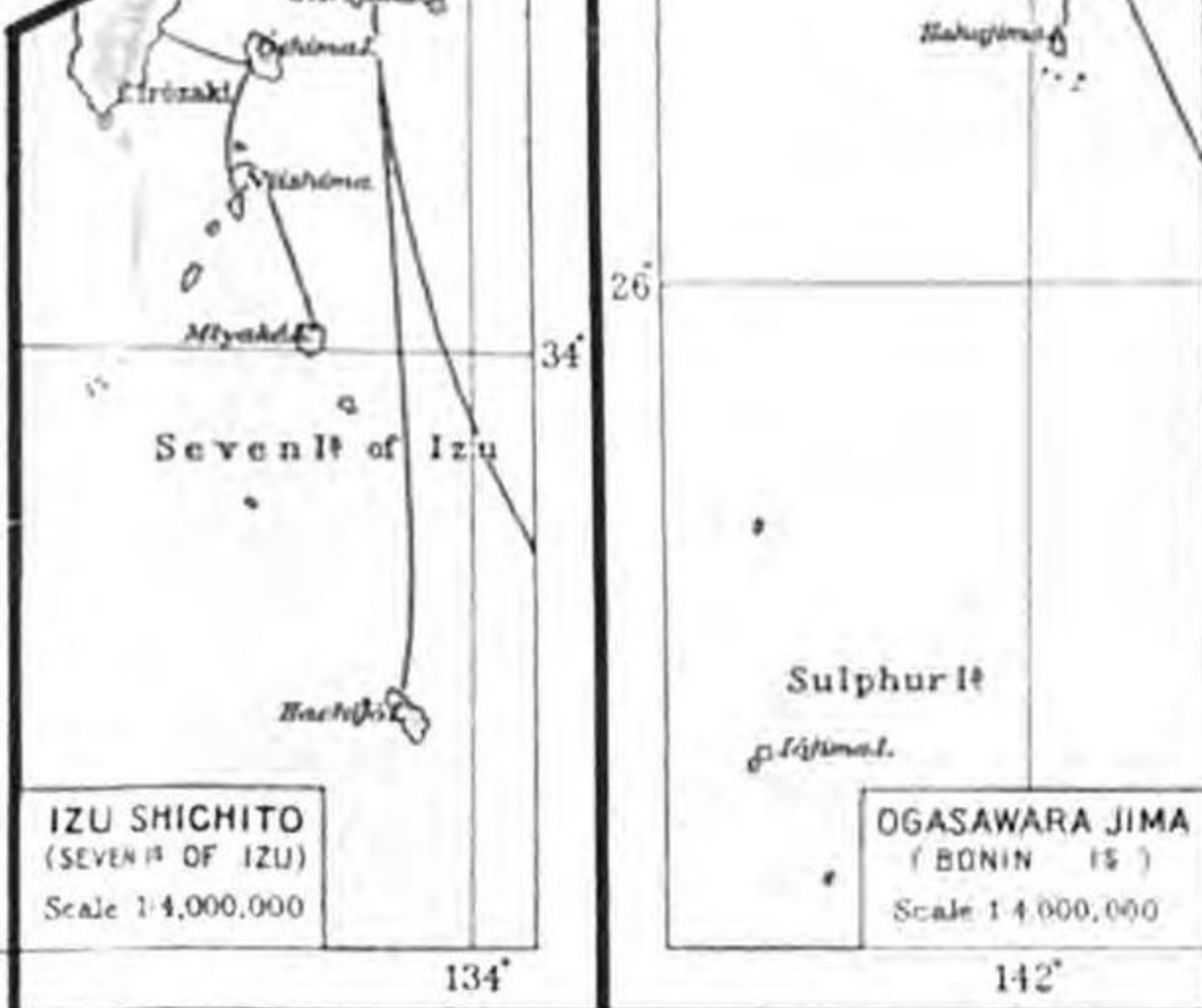
Scale 1:5,000,000



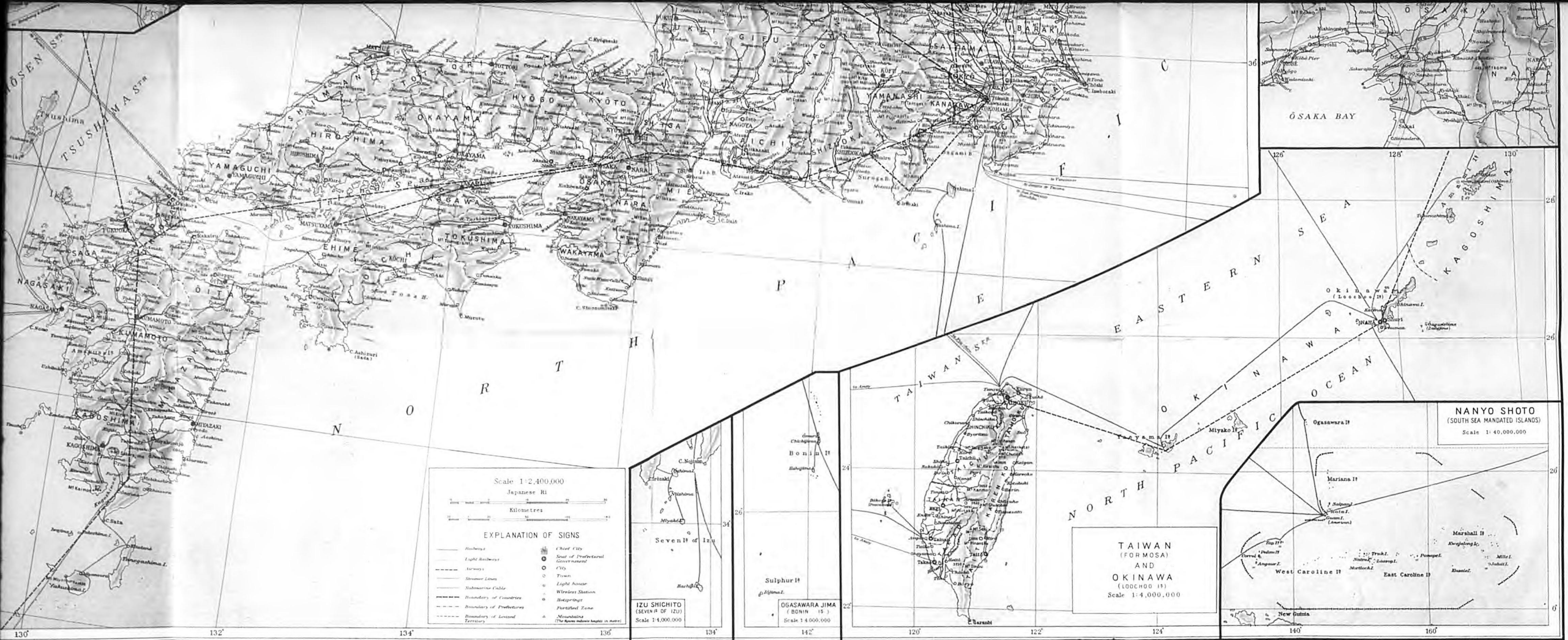
Scale 1:2,400,000
Japanese Ri
Kilometres

EXPLANATION OF SIGNS

- Railway
- - - Light Railway
- - - Airways
- - - Steamer Lines
- - - Submarine Cable
- - - Boundary of Countries
- - - Boundary of Prefectures
- - - Boundary of Leased Territory
- Chief City
- Seat of Prefectural Government
- City
- Town
- Light House
- Wireless Station
- Hot Springs
- Fortified Zone
- △ Mountains (The figure indicates height in meters)



英文日本年圖附圖
版權所有
日本外事協會
製圖部



Scale 1:2,400,000
Japanese Ri
Kilometres

EXPLANATION OF SIGNS

—	Roadway	●	Chief City
- - -	Light Railway	○	Seat of Prefectural Government
—	Airway	○	City
—	Steamer Line	○	Town
—	Submarine Cable	○	Light House
- - -	Boundary of Countries	○	Wireless Station
- - -	Boundary of Prefecture	○	Hot Springs
- - -	Boundary of Local Territory	○	Fortified Zone
		△	Mountain (The figure indicates height in meters)

IZU SHICHITO (SEVEN I OF IZU)
Scale 1:4,000,000

OGASAWARA JIMA (BONIN I)
Scale 1:4,000,000

TAIWAN (FORMOSA) AND OKINAWA (LOOCHOO I)
Scale 1:4,000,000

NANYO SHOTO (SOUTH SEA MANDATED ISLANDS)
Scale 1:40,000,000

INTERNATIONAL PROSECUTION SECTION

Doc. Nos. 1770 - 1771 - 1772 -
1773 - 1774 - 1775 -
1776 - 1777 - 1778 -
- 1779 - 1780 -

3 June 1946

ANALYSIS OF DOCUMENTARY EVIDENCE

DESCRIPTION OF ATTACHED DOCUMENTS.

Title and Nature: "Japan Year Book" published by
Foreign Affairs Assn. of Japan.

Date: 1931-45, Original () Copy (x) Language:
incl. English

Has it been translated? Yes () No (x)
Has it been photostated? Yes () No (x)

LOCATION OF ORIGINAL:

SOURCE OF ORIGINAL: Ueno Library; Foreign Affairs Assn.
of Japan

PERSONS IMPLICATED:

CRIMES TO WHICH DOCUMENT APPLICABLE:

SUMMARY OF RELEVANT POINTS:

Contains annual comprehensive data on trade, politics,
foreign relations, industry, etc. Yearly editions have
been assigned following document numbers:

<u>Doc. No.</u>	<u>Years</u>
1770	1938-39
1771	1931
1772	(RESERVED FOR 1932 Edition)
1773	1933
1774	1934
1775	1935
1776	1936
1777	1937
1778	1940-41
*	1941-42
1779	1942-43
1780	1944-45

(* 1941-42 Edition is our Doc. No. 1756)

Analyst: W. H. Wagner

1770,
DOC.#1771, 2, 3,
4, 5, 6, 7, 8, 9
and 1780.